

# The Difference of Lymphocyte Subsets Including Regulatory T-Cells in Umbilical Cord Blood between AGA Neonates and SGA Neonates

Sang Hee Yoon,<sup>1</sup> Mina Hur,<sup>2</sup> Han Sung Hwang,<sup>1</sup> Han Sung Kwon,<sup>1</sup> and In Sook Sohn<sup>1</sup>

<sup>1</sup>Division of Maternal and Fetal Medicine, Department of Obstetrics and Gynecology, Research Institute of Medical Science, Konkuk University School of Medicine, Seoul;

<sup>2</sup>Department of Laboratory Medicine, Konkuk University School of Medicine, Seoul, Korea.

Received: July 16, 2014

Revised: October 10, 2014

Accepted: November 5, 2014

Corresponding author: Dr. In Sook Sohn,  
Division of Maternal and Fetal Medicine,  
Department of Obstetrics and Gynecology,  
Research Institute of Medical Science,  
Konkuk University School of Medicine,  
120-1 Neungdong-ro, Gwangjin-gu,  
Seoul 143-729, Korea.

Tel: 82-2-2030-7642, Fax: 82-2-2030-7747

E-mail: 19960011@kuh.ac.kr

The authors have no financial conflicts of interest.

**Purpose:** This study aimed to compare the regulatory T cells in cord blood of appropriate for gestational age (AGA) neonates with those of small for gestational age (SGA) neonates. **Materials and Methods:** Umbilical cord blood was collected upon labor in 108 healthy full-term (between 37 and 41 gestational weeks) neonates, who were born between November 2010 and April 2012. Among them, 77 samples were obtained from AGA neonates, and 31 samples were obtained from SGA neonates. Regulatory T cells and lymphocyte subsets were determined using a flow cytometer. Student's t-test for independent samples was used to compare differences between AGA and SGA neonates. **Results:** Regulatory T cells in cord blood were increased in the SGA group compared with normal controls ( $p=0.041$ ). However, cytotoxic T cells in cord blood were significantly decreased in the SGA group compared with normal controls ( $p=0.007$ ). **Conclusion:** This is the first study to compare the distribution of lymphocyte subsets including regulatory T cells in cord blood between AGA neonates and SGA neonates.

**Key Words:** Small for gestational age, cord blood, regulatory T-cell, lymphocyte subset

## INTRODUCTION

Small for gestational age (SGA) is a clinically significant pregnancy disorder. Commonly, SGA is defined as a birth weight at or below the 10th percentile for gestational age.<sup>1</sup>

Infants of low birth weight for gestation are at increased risk for neonatal morbidity and mortality and consequently may require intensive care. Moreover, the prevalence of long-term developmental problems is high during adolescence and early adulthood among infants of low birth weight. SGA is also frequently associated with serious perinatal complications. For example, fetal distress and intrauterine fetal death may occur during the fetal period, and neonatal distress such as pneumonia, sepsis, pulmonary hemorrhage, hypoglycemia, hypoproteinemia, and

### © Copyright:

Yonsei University College of Medicine 2015

This is an Open Access article distributed under the terms of the Creative Commons Attribution Non-Commercial License (<http://creativecommons.org/licenses/by-nc/3.0>) which permits unrestricted non-commercial use, distribution, and reproduction in any medium, provided the original work is properly cited.

electrolyte abnormalities may present during the neonatal period. Many studies have suggested that in children born SGA, there is an association with the development of metabolic syndrome in adult life, such as hypertension and renal diseases,<sup>2</sup> and there is an increased incidence of immune diseases, such as asthma, during school age.<sup>3</sup>

SGA has several different causes, such as intrauterine infections, multiple gestation, abnormality of the placenta, umbilical cord, and chromosomes, congenital malformation, congenital birth defects, maternal complications (pre-eclampsia, hypertensive disorder, diabetes, asthma, anemia, and hyperthyroidism), and drug intake; however, most cases of SGA are of unknown origin.<sup>4</sup> According to a recent review article, SGA fetuses constitute a large heterogeneous group that includes healthy small fetuses, chromosomally abnormal fetuses, and fetuses suffering from utero-placental insufficiency leading to intrauterine growth restriction (IUGR).<sup>5</sup> Recent studies have shown that IUGR represents a human model of chronic fetal hypoxia, and a relationship between IUGR and pro-inflammatory cytokines has been described.<sup>5,6</sup> Hypoxia and inflammation reaction, which are indicated as a cause of IUGR, can lead to varied responses in the body. In particular, it is reported that this hypoxia and inflammation reaction induce changes of the immune system by producing fractional (subset) changes in lymphocyte blast cells in the body.<sup>7-10</sup>

Regulatory T cells are lymphocytes expressed as CD4<sup>+</sup>CD25<sup>high</sup>FoxP3<sup>+</sup>, and these play an important role in the maintenance of self-tolerance and immune homeostasis. When immune system variation is represented *in vivo*, fractional changes of regulatory T cells occur. There is no doubt that regulatory T cells expand in the periphery in human pregnancy and are present in significant numbers at the fetal-maternal interface.<sup>11</sup>

In SGA, the immune system is likely to be changed by hypoxia and inflammatory reaction during pregnancy. While many early studies focused on the depressed immune responses of SGA infants, more recent research suggests that these defects may persist beyond infancy. However, in spite of this probability, efforts to explore the condition of the immune system by directly investigating changes of lymphocytes in the blood of SGA infants have so far proven to be unsatisfactory.

In this study, we attempted to compare the distribution of lymphocyte subsets including regulatory T cells in cord blood between appropriate for gestational age (AGA) neonates and SGA neonates.

## MATERIALS AND METHODS

### Study population

This study was performed using a sample of 108 pregnant mothers who delivered full-term neonates, based on a pregnancy period of 37–41 weeks at Konkuk University Hospital during the period from November 2010 to April 2012. Cases of multiple gestation, congenital malformation, placental abnormalities (placenta previa, placenta accrete, and velamentous insertion of the cord), and maternal conditions [Behcet's disease, Herpes Simplex Virus (HSV) infection, viral meningitis, tuberculosis, and systemic lupus erythematosus] were excluded from the sample. There were 31 SGA neonates among a total of 108, and at the time of birth, depending on the gestational age, the diagnostic standard of SGA was established based on a weight below the 10th percentile (37 weeks: 2.541 g; 38 weeks: 2.714 g; 39 weeks: 2.852 g; 40 weeks: 2.929 g; 41 weeks: 2.948 g).<sup>1</sup> The number of neonates with a normal weight was 77, and this was established based on the weight between the 10th percentile and 90th percentile (37 weeks: 2.542–3.755 g; 38 weeks: 2.715–3.867 g; 39 weeks: 2.853–3.980 g; 40 weeks: 2.930–4.060 g; 41 weeks: 2.949–4.094 g).<sup>1</sup> The study was approved by the Institutional Review Board. Written informed consent was obtained from all participants.

### Sample collection

We drew blood from the umbilical cord intravenously for research shortly after birth. The 9-mL cord blood samples were collected in sterile EDTA tubes, dividing each sample by placing about 3 mL into each EDTA tube. We gently agitated the tubes from side to side for about 30–60 seconds in order to prevent clotting, and these specimens were then stored in a refrigerator. All experiments were performed within 24 hours after blood sampling.

### Flow cytometry analysis

Multicolor flow cytometry analysis was performed using Cytomics FC500 and CXP software (Beckman Coulter, Fullerton, CA, USA). In order to separate mononuclear cells in the cord blood, 6 cc of each specimen was used for density gradient centrifugation using a Ficoll filter (Ficoll-Paque, GE Healthcare Life Sciences, Milan, Italy). By floating the obtained mononuclear cell layer in phosphonate-buffered saline, its concentration was maintained as  $1 \times 10^6$  cells/mL. In order to find the regulatory T cells among the mononuclear

cells, a Human Regulatory T Cell staining Kit (eBioscience, San Diego, CA, USA) containing CD4, CD25, and FoxP3 was used. This kit included fluorescein isothiocyanate (FITC)-CD4, phycoerythrin (PE)-CD25, and PE-cyanin5-FoxP3. To create isotype-negative controls that would in turn define the positive population, cells were stained with PE-cyanine 5-conjugated rat IgG2a for 30 minutes at 4°C. After gating, the percentage of FoxP3<sup>+</sup> cells (CD4<sup>+</sup>CD25<sup>high</sup>FoxP3<sup>+</sup>) was counted in the CD4<sup>+</sup> population (Fig. 1).

For lymphocyte subsets, 3 mL of cord blood was incubated for 15 minutes at room temperature with the following two-color antibody combinations: CD3-FITC/CD8-PE, CD3-FITC/CD4-PE, CD3-FITC/CD19-PE, and CD3-FITC/CD16 plus CD56-PE. Cytomics FC500 software was used to analyze cytotoxic T cells (CD3+CD8+), helper T cells (CD3+CD4+), B cells (CD3-CD19+), and natural killer cells (CD3-CD16+CD56+).

### Statistical analysis

In order to comparatively analyze clinical features and the lymphocyte blast cell ratio of the SGA and AGA groups, Student's t-test was used, and the mean, maximum, and minimum values were also obtained. Statistical analysis was performed using SPSS 18 software (SPSS Inc., Chicago, IL, USA).

*p* values equal to or less than 0.05 were considered statistically significant.

## RESULTS

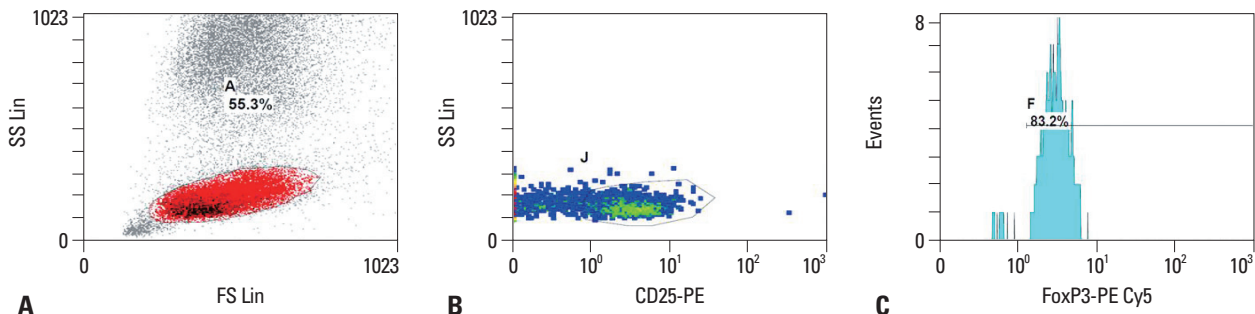
### Comparison of general clinical features between the two groups

The maternal age, gestational age, birth weight, systolic BP, diastolic BP, and proteinuria of each group were compared. Significant differences were not present in maternal age, gestational age, systolic BP, diastolic BP, and proteinuria. Birth weight was significantly different between the infant group of normal weight (3.270 g) and the SGA group (2.540 g; *p*<0.001) (Table 1).

### Comparison of regulatory T cells of the two groups

In the AGA group, the mean value of regulatory T cells was 2.59%, the minimum value was 0.13%, and the maximum value was 8.06%. In the SGA group, the mean value of regulatory T cells was 3.02%, the minimum value was 0.60%, and the maximum value was 6.81%.

The distribution of cord-blood regulatory T cells showed a significant difference between the AGA and SGA groups



**Fig. 1.** Flow cytometric detection of regulatory T cells. (A) A forward and side scatter histogram was used to define the lymphocyte population. (B) The expression of CD4 and CD25 in total lymphocytes was detected and compared with the negative isotype control, and different gates were drawn to define CD4<sup>+</sup>CD25<sup>high</sup> cells. (C) This expression is shown as the geometric mean of fluorescence intensity of FoxP3<sup>+</sup> in CD4<sup>+</sup>CD25<sup>high</sup> cells.

**Table 1.** Clinical Characteristics of the Patients in the Appropriate and Small for Gestational Age Groups

Variable	AGA group (n=77)	SGA group (n=31)	<i>p</i> value
Maternal age (yrs)	33 [26, 39]	32 [26, 37]	0.835
Gestational age at delivery (days)	271 [263, 288]	270 [259, 283]	0.147
Birth weight (kg)	3.27 [2.70, 4.57]	2.54 [1.49, 2.86]	<0.001*
Systolic blood pressure (mm Hg)	109 [89, 129]	108 [83, 128]	0.324
Diastolic blood pressure (mm Hg)	69 [50, 89]	68 [53, 89]	0.065
2nd trimester mean uterine artery PI	0.74±0.19	0.89±0.24	0.109
3rd trimester umbilical artery PI	0.84±0.21	0.95±0.22	0.065
Proteinuria	None	None	

AGA, appropriate for gestational age; SGA, small for gestational age; PI, pulsatility index.

Data are presented as mean [minimum, maximum]. Data are presented as mean±SD.

\*Student's t-test.

( $p=0.041$ ) (Table 2, Fig. 2).

### Comparison of lymphocyte subsets of the two groups

The distribution of lymphocyte subsets in the cord blood is summarized in Table 2. When compared according to birth weight, there were no statistical differences in helper T cells (AGA: 49.96% [12.49–72.72%]; SGA: 52.23% [35.31–82.64%];  $p=0.148$ ), B cells (AGA: 16.79% [16.38–36.85%]; SGA: 16.96% [4.46–29.60%];  $p=0.821$ ), or NK cells (AGA: 8.46% [0.65–31.66%]; SGA: 9.38% [1.58–25.49%];  $p=0.421$ ). However, the distribution of cord-blood cytotoxic T cells showed a significant difference between AGA and SGA groups (AGA: 21.64% [10.72–36.51%]; SGA: 19.30% [8.60–28.68%];  $p=0.007$ ) (Table 2, Fig. 3).

## DISCUSSION

Lymphocytes are cells that create an immune response in

the body; they include T cells, B cells, and natural killer cells, and when these lymphocytes become abundant, they respond to antigens with high sensitivity, potentially resulting in the occurrence of allergic diseases. T cells include helper T cells, cytotoxic T cells, and regulatory T cells. Helper T cells induce a greater immune response by secreting various cytokines, and cytotoxic T cells eventually inhibit the immune response by directly attacking or removing other cells through apoptosis. Regulatory T cells that positively inhibit the activation of other T cells are expressed as CD4, CD25, and FoxP3. This regulatory T cell plays an important role in maintaining self-tolerance and immune homeostasis and preventing autoimmune disease.<sup>12–15</sup> In addition, regulatory T cells are able to prevent organ transplant rejection by inhibiting the response of CD4+ cells.<sup>16,17</sup>

In order to maintain a successful pregnancy, the immune system of pregnant women during the gestational period shows special variation that involves regulatory T cells positively inhibiting activation of various T cells.<sup>11</sup> An increase

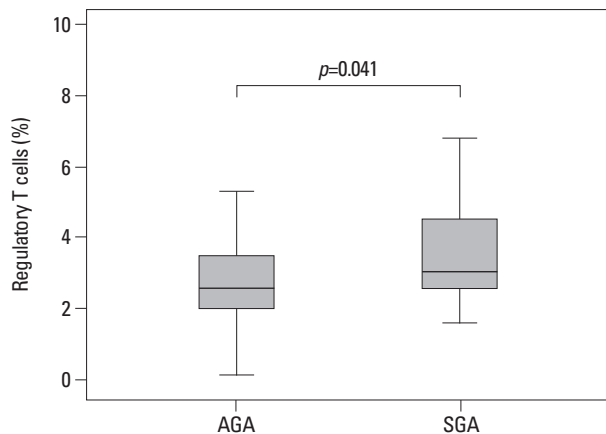
**Table 2.** Comparative Analysis of Lymphocytes Including Regulatory T Cells in Appropriate and Small for Gestational Age Groups

Lymphocytes	AGA group (n=77)	SGA group (n=31)	p value
Regulatory T cells (%) (CD4 <sup>+</sup> CD25 <sup>high</sup> FoxP3 <sup>+</sup> )	2.59 [0.13, 8.06]	3.02 [1.60, 6.81]	0.041*
Helper T cells (%) (CD3+/CD4+)	49.96 [12.49, 72.72]	52.23 [35.31, 82.64]	0.148
Cytotoxic T cells (%) (CD3+/CD8+)	21.64 [10.72, 36.51]	19.30 [8.60, 28.68]	0.007*
B-cells (%) (CD19+)	16.79 [6.38, 36.85]	16.96 [4.46, 29.60]	0.821
NK cells (%) (CD3-/CD16+/CD56+)	8.45 [0.65, 31.66]	9.38 [1.58, 25.49]	0.421

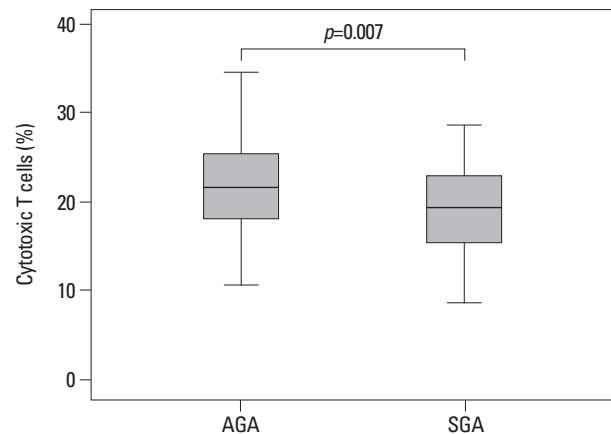
AGA, appropriate for gestational age; SGA, small for gestational age.

Data are presented as mean [minimum, maximum].

\*Student's t-test.



**Fig. 2.** Regulatory T cells in cord blood of the appropriate and small for gestational age groups. Central bars indicate the mean values, and upper and lower bars indicate the range. The mean value of cord blood regulatory T cells showed a significant difference between AGA and SGA neonates (2.59% vs. 3.02%,  $p=0.041$ , Student's t-test). AGA, appropriate for gestational age; SGA, small for gestational age.



**Fig. 3.** Cytotoxic T cells in cord blood of the appropriate and small for gestational age groups. Central bars indicate the mean values, and upper and lower bars indicate the range. The mean value of cord-blood cytotoxic T cells was significantly different between AGA and SGA neonates (21.64% vs. 19.30%,  $p=0.007$ , Student's t-test). AGA, appropriate for gestational age; SGA, small for gestational age.

of regulatory T cells of pregnant women during the gestational period is observed at an early stage of pregnancy.<sup>18,19</sup> This change implies that regulatory T cells in the blood of pregnant women apparently recognize the fetus as an antigen derived from a paternal line.<sup>20,21</sup> These regulatory T cells are considered to play an important role in maintaining immune homeostasis for the fetus in pregnant women during the gestational period.<sup>22,23</sup> In a study, it was reported that the number of regulatory T cells in the blood of pregnant women during pregnancy was significantly increased and this value dropped after delivery,<sup>18</sup> additionally, the number of regulatory T cells in the blood of pregnant women during the second trimester was found to be mostly increased.<sup>24</sup> When spontaneous abortion was compared with normal pregnancy for the first time in 2004, it was reported that the number of regulatory T cells in the blood of pregnant women was low,<sup>25</sup> and another study reported that in the case of abortion at an early stage of pregnancy, a decrease of regulatory T cells was shown as well.<sup>26</sup> The immunology mechanisms taking place in the placenta during pregnancy have been investigated since the 1990s, and it was reported that as implantation progressed, the ratio of lymphocytes increased in the decidualized endometrium.<sup>27,28</sup> In addition, as a result of analyzing regulatory T cells in the endometrial tissue of infertile females, an insufficiency of regulatory T cells was found.<sup>29</sup>

Large amounts of research relevant to pregnancy have been performed in a similar way; however, most of this research has focused on the maternal blood and placenta. Although umbilical cord blood reflects the condition of the fetus during pregnancy, the research on cord blood from SGA neonates is still far from satisfactory.

The distribution of regulatory T cells in normal cord blood has not yet been defined. In several previous studies, the distribution of regulatory T cells in cord blood was reported as 2–3%,<sup>30</sup> 2.63–8.94%,<sup>11</sup> and 4.0–10.0%.<sup>31</sup> However, these studies were limited in that they enrolled small sample numbers. In 2012, an investigative study on the lymphocyte subset in cord blood was undertaken for the first time. This study provided the reference intervals for lymphocyte subsets including regulatory T cells in umbilical cord blood from healthy full-term neonates. In this study, the reference intervals for lymphocyte subsets were: helper T-cells (CD3+/CD4+), 15.40–70.06%; cytotoxic T-cells (CD3+/CD8+), 9.65–34.28%; B-cells (CD19+), 4.50–29.59%; and natural killer cells (CD3-/CD16+/CD56+), 1.42–28.03%. The reference interval for regulatory T cells

was 0.35–9.07%, and this value was shown to have a wider range than the reference values (1.7–7.0%) of adult peripheral blood.<sup>22</sup>

As a follow up study, we attempted to compare the distribution of lymphocyte subsets including regulatory T cells in cord blood between AGA and SGA neonates for the first time. In our study, regulatory T cells were increased ( $p=0.041$ ); however, cytotoxic T cells were decreased ( $p=0.007$ ) in the SGA group compared with normal controls. Additionally the distribution of helper T cells, B cells, and NK cells did not differ according to fetal body weight.

SGA fetuses are a heterogeneous group comprising fetuses that have failed to achieve their growth potential due to intrauterine growth restriction and fetuses that are constitutionally small.<sup>5</sup> According to a recent study, SGA of which specific cause has not been clarified has a close relationship with hypoxia and increased inflammation response.<sup>5,6</sup>

In the context of hypoxia, hypoxia inducible factor-1 (HIF-1) is expressed, and this factor plays the important role of regulating glycolysis, angiogenesis, erythropoiesis, and cell survival.<sup>32</sup> HIF-1 is able to function throughout all aspects of normal and abnormal placental differentiation, growth, and function, including during the first trimester (physiologically low oxygen), during mid-late gestation (where there is an adequate supply of blood and oxygen to the placenta), and in pathological pregnancies complicated by placental hypoxia or ischemia.<sup>33</sup>

One study investigated hypoxia-inducible transcription factor in IUGR placentas, comparing placentas from normal pregnant, pre-eclampsia, and IUGR patients. In this study, the pre-eclampsia-to-normal pregnant placenta ratio for HIF-1 was 1.67 ( $p<0.001$ ), and the IUGR-to-normal pregnant placenta ratio was 1.03 ( $p$ =not significant).<sup>34</sup>

Generally, hypoxia causes fractional changes of lymphocyte blast cells.<sup>7-10</sup> In a hypoxic environment, these lymphocyte fractional changes may lead to variation in inflammation response markers. According to a recent study, HIF-1 regulates the balance of the lymphocyte fraction.<sup>7</sup> HIF-1 also increases T helper cell type 2 (Th2) yet decreases T helper cell type 1 (Th1).<sup>35-37</sup> In general, Th2 cells are excellent helpers for B-cell antibody secretion; however, Th1 cells also interact with cytotoxic T cells and macrophages.<sup>38</sup> Additionally, Th1 cells produce pro-inflammatory cytokines such as interleukin (IL)-2, gamma-interferon, and tumor necrosis factor-beta,<sup>39</sup> whereas Th2 cells secrete anti-inflammatory cytokines such as IL-4 and IL-5.<sup>39</sup> Other cytokines, such as IL-3, IL-6, and tumor necrosis factor-al-



pha, are produced by both Th1 and Th2 cells.<sup>39</sup> Anti-inflammatory cytokines play a critical role in pregnancy maintenance.<sup>40</sup> From the formation of the placenta there tends to be bias toward Th2 cytokine production, which is typically anti-inflammatory.<sup>41</sup> This bias is thought to protect the developing blastocyst by down-regulating inflammatory and cytotoxic Th1-type activity until the placental barrier is established.<sup>42,43</sup>

In our study, cytotoxic T cells were decreased ( $p=0.007$ ), and B-cells ( $p=0.821$ ) were increased in the SGA group compared with normal controls. It has been hypothesized that SGA can be compensated by regulation of cytokine production favoring anti-inflammation. The expressed HIF-1 in a hypoxic environment such as in SGA increases Th2 cells, which secrete anti-inflammatory cytokines yet decrease Th1 cells, which secrete pro-inflammatory cytokines for pregnancy maintenance. Consequently, an anti-inflammatory environment, due either to increased production of anti-inflammatory cytokines or to decreased production of pro-inflammatory cytokines, could be an important factor in the etiology of intrauterine growth restriction.

Recent data suggest that hypoxia and its principal molecular signature HIF-1 may tune down inflammation by dictating anti-inflammatory programs.<sup>9</sup> Hypoxia has been demonstrated to up-regulate the expression of FoxP3 in human and murine mononuclear cells.<sup>9</sup> The effects of hypoxia on FoxP3 expression were found to be HIF-1-dependent as they were abolished upon transfection with short-interfering RNAs for HIF-1 and promoted by HIF-1 overexpression.<sup>9</sup> Thus, it was determined that HIF-1 increases regulatory T cells.<sup>9</sup> The conclusion of this previous study is similar to our present finding that the number of regulatory T cells in the cord blood of SGA infants was higher than AGA.

A limitation of this study is that the number of SGA infants as an experimental group was limited to 31, and a more reliable result would have been obtained if the targets of the experimental and control groups were higher in number.

However, our data suggest that the hypoxic environment in SGA may lead to a change of lymphocyte distribution in umbilical cord blood for the preservation of pregnancy.

To our knowledge, this is the first study to compare the distribution of lymphocyte subsets including regulatory T cells in cord blood between AGA and SGA neonates.

## ACKNOWLEDGEMENTS

This work was supported by Konkuk University in 2012.

## REFERENCES

- Cunningham FG, Leveno KJ, Bloom SL, Hauth JC, Gilstrap LC, Wenstrom KD. Williams Obstetrics. 22nd ed. New York: McGraw-Hill; 2005. p.51-82.
- Chan PY, Morris JM, Leslie GI, Kelly PJ, Gallery ED. The long-term effects of prematurity and intrauterine growth restriction on cardiovascular, renal, and metabolic function. *Int J Pediatr* 2010; 2010:280402.
- Raqib R, Alam DS, Sarker P, Ahmad SM, Ara G, Yunus M, et al. Low birth weight is associated with altered immune function in rural Bangladeshi children: a birth cohort study. *Am J Clin Nutr* 2007;85:845-52.
- Go SW, Kim KJ, Kim MY, Kim SJ, Kim SY, Kim SJ, et al. Obstetrics. 4th ed. Korean society of obstetrics and gynecology. Seoul: Koonja company; 2007. p.628-31.
- Al Qahtani N. Doppler ultrasound in the assessment of suspected intra-uterine growth restriction. *Ann Afr Med* 2011;10:266-71.
- Amarilyo G, Oren A, Mimouni FB, Ochshorn Y, Deutsch V, Mandel D. Increased cord serum inflammatory markers in small-for-gestational-age neonates. *J Perinatol* 2011;31:30-2.
- Dang EV, Barbi J, Yang HY, Jinasena D, Yu H, Zheng Y, et al. Control of T(H)17/T(reg) balance by hypoxia-inducible factor 1. *Cell* 2011;146:772-84.
- Valencia X, Yarboro C, Illei G, Lipsky PE. Deficient CD4+CD25 high T regulatory cell function in patients with active systemic lupus erythematosus. *J Immunol* 2007;178:2579-88.
- Ben-Shoshan J, Maysel-Auslender S, Mor A, Keren G, George J. Hypoxia controls CD4+CD25+ regulatory T-cell homeostasis via hypoxia-inducible factor-1alpha. *Eur J Immunol* 2008;38:2412-8.
- Praksova P, Stourac P, Bednarik J, Vlckova E, Mikulkova Z, Michalek J. Immunoregulatory T cells in multiple sclerosis and the effect of interferon beta and glatiramer acetate treatment on T cell subpopulations. *J Neurol Sci* 2012;319:18-23.
- Takahata Y, Nomura A, Takada H, Ohga S, Furuno K, Hikino S, et al. CD25+CD4+ T cells in human cord blood: an immunoregulatory subset with naive phenotype and specific expression of forkhead box p3 (Foxp3) gene. *Exp Hematol* 2004;32:622-9.
- Sakaguchi S. Regulatory T cells: key controllers of immunologic self-tolerance. *Cell* 2000;101:455-8.
- Shevach EM. CD4+ CD25+ suppressor T cells: more questions than answers. *Nat Rev Immunol* 2002;2:389-400.
- Sakaguchi S, Sakaguchi N, Asano M, Itoh M, Toda M. Immunologic self-tolerance maintained by activated T cells expressing IL-2 receptor alpha-chains (CD25). Breakdown of a single mechanism of self-tolerance causes various autoimmune diseases. *J Immunol* 1995;155:1151-64.
- Kingsley CI, Karim M, Bushell AR, Wood KJ. CD25+CD4+ regulatory T cells prevent graft rejection: CTLA-4- and IL-10-dependent immunoregulation of alloresponses. *J Immunol* 2002;168:1080-6.
- Graca L, Cobbold SP, Waldmann H. Identification of regulatory T cells in tolerated allografts. *J Exp Med* 2002;195:1641-6.
- Wood KJ, Sakaguchi S. Regulatory T cells in transplantation tolerance. *Nat Rev Immunol* 2003;3:199-210.
- Somerset DA, Zheng Y, Kilby MD, Sansom DM, Drayson MT. Normal human pregnancy is associated with an elevation in the immune suppressive CD25+ CD4+ regulatory T-cell subset. *Im-*

- munology 2004;112:38-43.
19. Mjösberg J, Svensson J, Johansson E, Hellström L, Casas R, Jenmalm MC, et al. Systemic reduction of functionally suppressive CD4<sup>dim</sup>CD25<sup>high</sup>Foxp3<sup>+</sup> Tregs in human second trimester pregnancy is induced by progesterone and 17β-estradiol. *J Immunol* 2009;183:759-69.
  20. Mjösberg J, Berg G, Emerudh J, Ekerfelt C. CD4<sup>+</sup> CD25<sup>+</sup> regulatory T cells in human pregnancy: development of a Treg-MLC-ELISPOT suppression assay and indications of paternal specific Tregs. *Immunology* 2007;120:456-66.
  21. Tilburgs T, Roelen DL, van der Mast BJ, de Groot-Swings GM, Kleijburg C, Scherjon SA, et al. Evidence for a selective migration of fetus-specific CD4<sup>+</sup>CD25<sup>bright</sup> regulatory T cells from the peripheral blood to the decidua in human pregnancy. *J Immunol* 2008;180:5737-45.
  22. Kim H, Moon HW, Hur M, Park CM, Yun YM, Hwang HS, et al. Distribution of CD4<sup>+</sup> CD25<sup>high</sup> FoxP3<sup>+</sup> regulatory T-cells in umbilical cord blood. *J Matern Fetal Neonatal Med* 2012;25:2058-61.
  23. Leber A, Teles A, Zenclussen AC. Regulatory T cells and their role in pregnancy. *Am J Reprod Immunol* 2010;63:445-59.
  24. Pijnenborg R, Bland JM, Robertson WB, Brosens I. Uteroplacental arterial changes related to interstitial trophoblast migration in early human pregnancy. *Placenta* 1983;4:397-413.
  25. Sasaki Y, Sakai M, Miyazaki S, Higuma S, Shiozaki A, Saito S. Decidual and peripheral blood CD4<sup>+</sup>CD25<sup>+</sup> regulatory T cells in early pregnancy subjects and spontaneous abortion cases. *Mol Hum Reprod* 2004;10:347-53.
  26. Aluvihare VR, Kallikourdis M, Betz AG. Regulatory T cells mediate maternal tolerance to the fetus. *Nat Immunol* 2004;5:266-71.
  27. King A, Loke YW. On the nature and function of human uterine granular lymphocytes. *Immunol Today* 1991;12:432-5.
  28. Stallmach T, Hebisch G, Joller-Jemelka HI, Orban P, Schwaller J, Engelmann M. Cytokine production and visualized effects in the feto-maternal unit. Quantitative and topographic data on cytokines during intrauterine disease. *Lab Invest* 1995;73:384-92.
  29. Jasper MJ, Tremellen KP, Robertson SA. Primary unexplained infertility is associated with reduced expression of the T-regulatory cell transcription factor Foxp3 in endometrial tissue. *Mol Hum Reprod* 2006;12:301-8.
  30. Mackroth MS, Malhotra I, Mungai P, Koech D, Muchiri E, King CL. Human cord blood CD4<sup>+</sup>CD25<sup>hi</sup> regulatory T cells suppress prenatally acquired T cell responses to Plasmodium falciparum antigens. *J Immunol* 2011;186:2780-91.
  31. Sakaguchi S, Miyara M, Costantino CM, Hafler DA. FOXP3<sup>+</sup> regulatory T cells in the human immune system. *Nat Rev Immunol* 2010;10:490-500.
  32. Wang GL, Semenza GL. Characterization of hypoxia-inducible factor 1 and regulation of DNA binding activity by hypoxia. *J Biol Chem* 1993;268:21513-8.
  33. Pringle KG, Kind KL, Sferruzzi-Perri AN, Thompson JG, Roberts CT. Beyond oxygen: complex regulation and activity of hypoxia inducible factors in pregnancy. *Hum Reprod Update* 2010;16:415-31.
  34. Rajakumar A, Jeyabalan A, Markovic N, Ness R, Gilmour C, Conrad KP. Placental HIF-1 alpha, HIF-2 alpha, membrane and soluble VEGF receptor-1 proteins are not increased in normotensive pregnancies complicated by late-onset intrauterine growth restriction. *Am J Physiol Regul Integr Comp Physiol* 2007;293:R766-74.
  35. Conforti L, Petrovic M, Mohammad D, Lee S, Ma Q, Barone S, et al. Hypoxia regulates expression and activity of Kv1.3 channels in T lymphocytes: a possible role in T cell proliferation. *J Immunol* 2003;170:695-702.
  36. Robbins JR, Lee SM, Filipovich AH, Szigligeti P, Neumeier L, Petrovic M, et al. Hypoxia modulates early events in T cell receptor-mediated activation in human T lymphocytes via Kv1.3 channels. *J Physiol* 2005;564(Pt 1):131-43.
  37. Sitkovsky M, Lukashev D. Regulation of immune cells by local-tissue oxygen tension: HIF1 alpha and adenosine receptors. *Nat Rev Immunol* 2005;5:712-21.
  38. Romagnani S. Type 1 T helper and type 2 T helper cells: functions, regulation and role in protection and disease. *Int J Clin Lab Res* 1991;21:152-8.
  39. Del Prete G. Human Th1 and Th2 lymphocytes: their role in the pathophysiology of atopy. *Allergy* 1992;47:450-5.
  40. Weetman AP. The immunology of pregnancy. *Thyroid* 1999;9:643-6.
  41. Engel SA, Olshan AF, Savitz DA, Thorp J, Erichsen HC, Chanock SJ. Risk of small-for-gestational age is associated with common anti-inflammatory cytokine polymorphisms. *Epidemiology* 2005;16:478-86.
  42. Dealtry GB, O'Farrell MK, Fernandez N. The Th2 cytokine environment of the placenta. *Int Arch Allergy Immunol* 2000;123:107-19.
  43. Raghupathy R, Makhseed M, Azizieh F, Hassan N, Al-Azemi M, Al-Shamali E. Maternal Th1- and Th2-type reactivity to placental antigens in normal human pregnancy and unexplained recurrent spontaneous abortions. *Cell Immunol* 1999;196:122-30.