

Effects of ADAM10 upregulation on progression, migration, and prognosis of nasopharyngeal carcinoma

Bo You,¹ Ying Shan,¹ Si Shi,¹ Xingyu Li² and Yiwen You¹

¹Department of Otorhinolaryngology Head and Neck Surgery, Affiliated Hospital of Nantong University, Nantong; ²Department of Pathology, Medical School of Nantong University, Nantong, China

Key words

ADAM10, migration, nasopharyngeal carcinoma, prognosis, progression

Correspondence

Yiwen You, Department of Otorhinolaryngology Head and Neck Surgery, Affiliated Hospital of Nantong University, Nantong, Jiangsu Province 226000, China.
Tel/Fax: +86-0513-8116-1025;
E-mail: youyiwen_nantong@163.com
Xingyu Li, Department of Pathology, Medical School of Nantong University, Nantong, Jiangsu Province 226000, China.
Tel/Fax: +86-0513-8116-8512;
E-mail: kawayelily@ntu.edu.cn

Funding information

Chinese National Natural Science Foundation (81172841). (81202368). (81471603). China Postdoctoral Science Foundation (2013M541708). Natural Science Foundation of Jiangsu Province (SBK2015022581). project of "333 Natural Science Foundation" of Jiangsu Grant (BRA2013286). "Top Six Types of Talents" Financial Assistance of Jiangsu Province Grant (6). project of Jiangsu Provincial Health Department (Z201005).

Received April 24, 2015; Revised August 4, 2015; Accepted August 22, 2015

Cancer Sci 106 (2015) 1506–1514

doi: 10.1111/cas.12800

Nasopharyngeal carcinoma (NPC) is the most common head and neck cancer in China, with 80 000 new cases and 50 000 deaths every year.^(1–3) The age of most NPC patients is approximately 30–50 years, which is younger than that found in other cancers.⁽⁴⁾ With the development of radiotherapy technology and the combined application of radiochemistry, the therapeutic efficacy is gradually improved, but it still fails to achieve the desired effect because of local recurrence and distant metastasis.⁽⁵⁾ Therefore, understanding the molecular events associated with NPC progression, invasion, and prognosis may improve earlier diagnosis, prognosis prediction, and development of novel therapeutic strategies.

A disintegrin and metalloprotease (ADAM), a family of zinc-dependent transmembrane proteins, is involved in a variety of signaling events that are aberrant in cancers as well as during tumor progression such as proliferation, differentiation, adhesion, migration, and invasion.^(6–10) ADAM10, an important member of the ADAMs family, primarily locates on the cell

A disintegrin and metalloprotease 10 (ADAM10) is a typical member of the ADAMs family, which has been reported to be upregulated in various types of cancers and contribute to cancer progression and metastasis. However, little is known about the role of ADAM10 in nasopharyngeal carcinoma (NPC). The purpose of this study is to explore ADAM10 expression status and its biological functions in NPC. We first examined the expression of ADAM10 in NPC tissues and cell lines by immunohistochemistry, Western blotting, PCR, and immunofluorescence analysis. We observed that ADAM10 was significantly elevated in NPC and its expression level was correlated with T classification ($P = 0.044$), distant metastasis ($P = 0.016$), TNM clinical stage ($P = 0.013$), and proliferation marker Ki-67 expression ($P = 0.001$). Patients with NPC with high expression of ADAM10 had shorter overall survival rates. In addition, knockdown of ADAM10 by RNAi was found to inhibit the CNE-2 cell proliferation and migration. Our findings hinted that overexpression of ADAM10 promotes the progression and migration of NPC, which makes it a potential therapeutic target for the treatment of tumor metastases in NPC.

membrane. Previous studies have shown that ADAM10 is overexpressed in a variety of cancers such as hepatocellular carcinoma, oral squamous cell carcinoma, melanoma, lung cancers, pancreatic carcinoma, gastric cancer, and bladder cancer.^(11–18) Accumulating evidence has also shown that ADAM10 exerts an important role in cancer pathogenesis, progression, chemoresistance, metastasis, and invasion by several different mechanisms.^(7,8,11,13,19–23) Activation of positively stimulating pathways is arguably the most important of all the mechanisms.⁽²⁴⁾ Moreover, ADAM10-mediated shedding of adhesion proteins also results in increased cell proliferation.⁽²⁵⁾ However, the involvement of ADAM10 in human NPC remains unclear.

In the current study, ADAM10 expression in NPC tissues and cell lines was characterized. We show that ADAM10 was strongly correlated with clinicopathological characteristics in NPC. In addition, the usefulness of ADAM10 as a prognostic factor was evaluated. Furthermore, the effect of ADAM10 on the biological behaviors of NPC cell lines was investigated.

The data revealed that ADAM10 is a prognostic marker of NPC and promotes NPC progression and migration.

Materials and Methods

Tissue specimens and ethics. All NPC tissues were obtained from histologically confirmed NPC patients who underwent biopsy at the Affiliated Hospital of Nantong University (Nantong, China). Twenty-four non-cancerous nasopharyngeal tissues were collected from patients with clinical symptoms suggestive of NPC, but ruled out by biopsy. None of the patients had received antitumor therapy prior to biopsy. The characteristics of 118 NPC patients are listed in Table 1. Furthermore, 20 paired of fresh NPC and non-cancerous nasopharyngeal tissues were snap-frozen in liquid nitrogen and stored at -80°C after biopsy. This study was approved by the Ethics Committee of the Affiliated Hospital of Nantong University and conforms to the provisions of the Declaration of Helsinki in 1995 (as revised in Tokyo 2004). All participants gave informed consent.

Immunohistochemical staining and Western blot analysis. Immunohistochemistry and Western blot analysis were carried out according to the previous report.⁽²⁶⁾ For assessment of ADAM10, the staining intensity and relative percentage of immunostained cells were analyzed and evaluated by two pathologists blinded to the data. The staining intensity was categorized as strong (2), weak (1), or negative (0) semiquantitatively using the following scale: 0, 0% of cells; 1, 1–25% of cells; 2, 26–50% of cells; 3, 51–75% of cells; and 4, 76–100%

Table 1. Association between a disintegrin and metalloprotease 10 (ADAM10) expression with clinicopathological features in patients with nasopharyngeal carcinoma

Clinicopathological parameters	Total	ADAM10 expression, <i>n</i>		<i>P</i> -value
		Low	High	
Gender				
Male	76	36	40	0.702
Female	42	18	24	
Age, years				
<50	42	18	24	0.702
≥50	76	36	40	
Smoking				
No	84	38	46	1.000
Yes	34	16	18	
T classification				
T1–T2	82	43	39	0.044*
T3–T4	36	11	25	
N classification				
N0–N1	81	41	40	0.163
N2–N3	37	13	24	
Distant metastasis				
No	90	47	43	0.016*
Yes	28	7	21	
TNM clinical stage				
I–II	46	28	18	0.013*
III–IV	72	26	46	
Ki-67 expression				
Low	48	31	17	0.001*
High	70	23	47	

*Statistical analyses were carried out using Pearson's χ^2 -test. $P < 0.05$ was considered significant.

of cells. The scoring results of intensity and extent were multiplied as described previously.⁽¹⁸⁾ The samples with a final score <4 were regarded as ADAM10 negative or weak expression and 4–8 were determined as overexpression. When evaluating the Ki-67 expression, 51–100% of positively stained cell nuclei was classified as the high expression group and 0–50% was the low expression group.

For Western blot analysis, anti-ADAM10 (1:300; Sangon Biotech, Shanghai, China), anti-Ki-67 (1:1000; Santa Cruz Biotechnology, Santa Cruz, CA, USA), anti-proliferating cell nuclear antigen (PCNA) (1:1000; Santa Cruz Biotechnology), anti-E-cadherin (1:1000; Cell Signaling Technology, Danvers, MA, USA), anti-N-cadherin (1:1000; Cell Signaling Technology), anti-vimentin (1:1000; Cell Signaling Technology), and anti- β -actin polyclonal antibody (1:2000; Santa Cruz Biotechnology) antibodies were used.

Immunofluorescence microscopy. Cells cultured on glass coverslips were fixed with 4% paraformaldehyde and blocked with 1% normal donkey serum. Cells were then incubated with primary antibodies overnight. Then, the cells were incubated with Alexa Fluor-conjugated secondary antibodies (1:1000; Invitrogen Life Technologies, Carlsbad, CA, USA), counterstained with Hoechst (Sigma-Aldrich Co., St. Louis, MO, USA) and observed with a fluorescence microscope.

Quantitative real-time PCR. Quantitative real-time PCR was carried out as previously described.⁽²⁶⁾ The primers were purchased from Sangon Biotech and were as follows: ADAM9, 5'-GGTGCTGGTGTGCTGCTG-3' (forward) and 5'-CTGCC TGGCTCCTTGAAC-3' (reverse); ADAM10, 5'-ATGGATTG TGGCTCATTGGT-3' (forward) and 5'-TGCCTGGAAGTG GTTTAGGA-3' (reverse); ADAM12, 5'-CAGGAAGGACTTG-GAGAC-3' (forward) and 5'-AGCAGCGATTACATACATTC-3' (reverse); and ADAM17, 5'-GTATCTGAACAACGACACC TG-3' (forward) and 5'-CCTCCTGGCACTTCTTCTG-3' (reverse). The expression levels of each gene were normalized by *GAPDH*.

Cell cultures. All four NPC cell lines (CNE-1, CNE-2, 5-8F, and 6-10B) maintained in RPMI-1640 (Gibco BRL, Grand Island, NY, USA) supplemented with 10% FBS (Gibco). The immortalized normal nasopharyngeal epithelial cell line NP69 was cultured in keratinocyte-serum-free medium (Invitrogen, Carlsbad, CA, USA).

Cell cycle analyses. Cells were fixed in 70% ethanol and then incubated with 1 mg/mL RNase A. Subsequently, cells were stained with propidium iodide (50 mg/mL; Becton Dickinson, San Jose, CA, USA) and analyzed using a Becton Dickinson flow cytometer (BD FACScan, San Jose, CA) and CellQuest acquisition and analysis programs. Gating was set to exclude cell debris, cell doublets, and cell clumps.

Small interfering RNAs and plasmids. The negative control siRNA and specific siRNAs for ADAM10 were designed and obtained from Guangzhou RiboBio (Guangzhou, China). The pcDNA-encoding ADAM10 reporter plasmid was purchased from GeneChem (Shanghai, China). The mock GV362 vector was used as a negative control. Cells were grown in 6-well plates and transfected with siRNAs and DNA plasmids using Lipofectamine 2000 (Invitrogen).

Cell proliferation assay. Cells were seeded in 96-well plates (20 000 cells/well) and grown overnight. The CCK-8 Kit reagents (10 μL /well, Sangon Biotech Co., Ltd, Shanghai, China) were added and incubated for 2 h at 37°C , and the absorbance was read at 450 nm in an automated plate reader.

Transwell assays. Cells (1×10^5) were seeded into the upper chambers of cell culture inserts (24-well type, 8- μm pore size;

Corning, Corning, NY, USA) in the serum-free medium. Medium containing 10% FBS was added to the lower chambers. After 16 h of incubation, the cells that had migrated to the undersurface of the membrane were fixed and stained with crystal violet. Digital images were obtained from the membranes, and 10 random fields were counted.

Wound-healing assay. CNE-2 cells were plated in 6-well plates. When the cell confluence reached 80%, a scratch was made through the confluent cell using a 100- μ L pipette tip. Photographs were taken at different time points within the scrape line.

Calculation and statistical analysis. Results from at least three independent experiments are reported as the mean \pm SD. Statistical analyses were carried out using SPSS17.0 software (SPSS Inc., Chicago, IL, USA). Survival curves were estimated by Kaplan–Meier analysis and compared by the log-rank test. The χ^2 -test was used to determine the significance of

differences in multiple comparisons. Statistical significance was assessed by two-tailed Student's *t*-test for two groups and one-way ANOVA for more than two groups. *P* < 0.05 was considered statistically significant.

Results

ADAM10 highly expressed in NPC. It was reported that members of the ADAM family, including ADAM9, ADAM10, ADAM12, and ADAM17, are aberrant in cancers and critical during tumor progression in processes such as proliferation, migration, and invasion. Here, we first detected the expression of certain members of the ADAMs family such as ADAM9, ADAM10, ADAM12, and ADAM17 in NPC cells and tissues by PCR. We found that, compared with ADAM9, ADAM12, and ADAM17, ADAM10 had highest expression levels in NPC tissues as well as NPC cells lines (Fig. 1). This finding

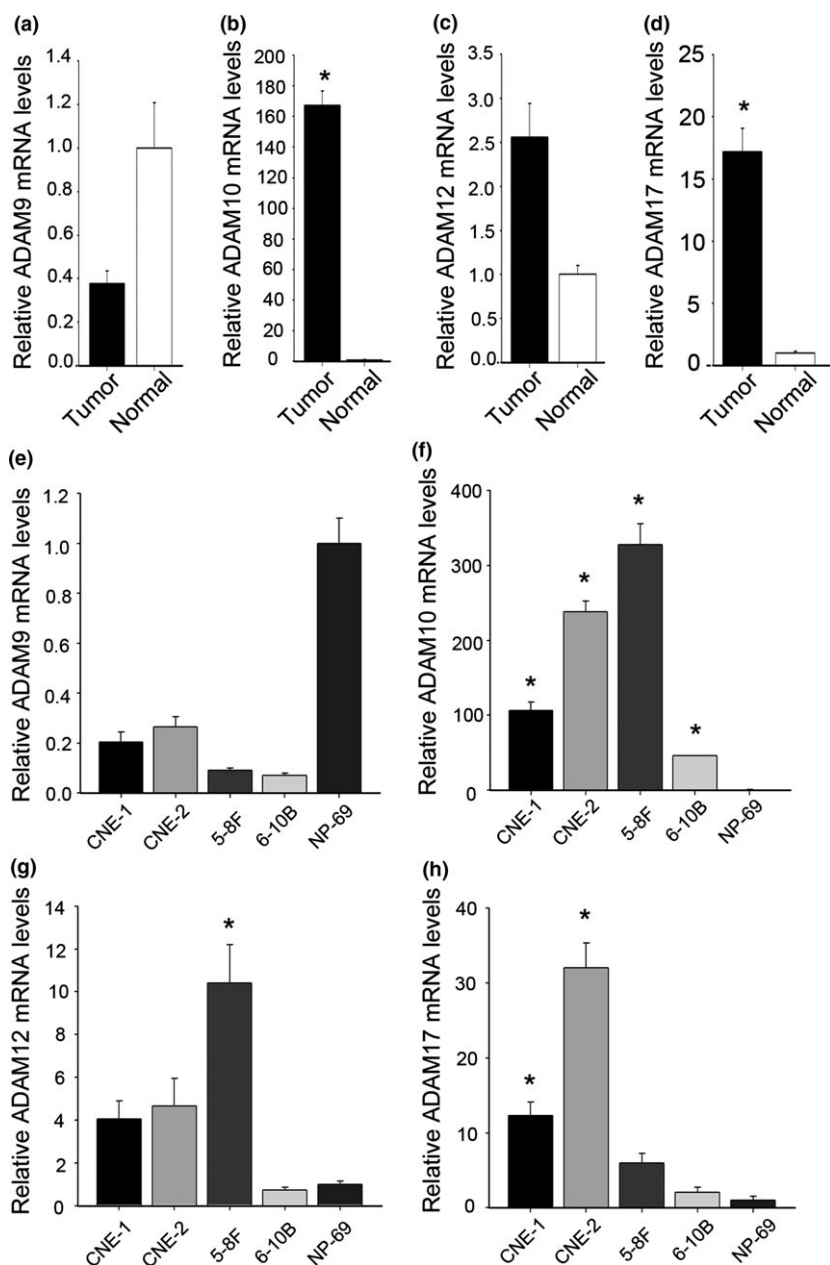


Fig. 1. Expression of types of a disintegrin and metalloprotease (ADAM) in nasopharyngeal carcinoma (NPC) tissues and cell lines. (a–d) mRNA levels of ADAM9, ADAM10, ADAM12, and ADAM17 in 20 paired NPC tissues by quantitative PCR. (e–h) mRNA levels of ADAM9, ADAM10, ADAM12, and ADAM17 in NPC cell lines by quantitative PCR. CNE-1, CNE-2, 5-8F, and 6-10B are human NPC cell lines; NP-69 is an immortalized normal nasopharyngeal epithelial cell line. The same experiment was repeated at least three times. **P* < 0.05.

suggests that ADAM10, but not other ADAMs, may act as a major sheddase for tumor progression in NPC.

We next detected the expression of ADAM10 and proliferation marker PCNA in 20 pairs of NPC and non-cancerous nasopharyngeal tissues by Western blot analysis. We found that the expression level of ADAM10 was similar to PCNA, both of which had higher expression in NPC than non-tumor tissues (Fig. 2a,b). Immunohistochemical analysis was further carried out to assess the overexpression of ADAM10 and proliferation marker Ki-67 (Fig. 2c). In agreement with the data above, ADAM10 and Ki-67 were highly expressed in NPC tissues (Fig. 2c). In contrast, there was no or little expression in non-tumor tissues (Fig. 2c). According to the statistical analysis, the positive expression rate of ADAM10 in the NPC was significantly higher than that in the non-tumor tissues ($P < 0.01$). The results of immunohistochemistry staining are summarized in Table 1.

Relationship between ADAM10 expression and clinicopathological characteristics. We further evaluated the association between ADAM10 expression and clinicopathologic variables in NPC. As shown in Table 1, high ADAM10 expression was significantly associated with T classification ($P = 0.044$), distant metastasis ($P = 0.016$), and clinical stage ($P = 0.013$). However, ADAM10 showed no statistical association with age,

sex, smoking status, or N classification (all $P > 0.05$). Moreover, the high expression of ADAM10 was similar to Ki-67 in most specimens (Table 1). There was a positive correlation between ADAM10 expression and Ki-67-based proliferative activity ($P < 0.01$; Fig. 3).

ADAM10 expression significantly associated with survival of NPC patients. Next, the prognostic significance of ADAM10 was assessed using Kaplan–Meier analysis. In 118 NPC cases, patients with ADAM10 overexpression had worse prognoses than those with negative expression (Fig. 4) ($P < 0.001$).

Univariate analyses showed that distant metastasis ($P = 0.002$), clinical stage ($P = 0.001$), Ki-67 expression ($P < 0.001$), and ADAM10 expression ($P < 0.001$) were significantly related to poor survival in NPC (Table 2). Multivariate analysis showed that clinical stage ($P = 0.03$), Ki-67 expression ($P = 0.017$), and ADAM10 expression ($P = 0.032$) were independent prognostic factors in NPC patients (Table 3).

Expression of ADAM10 in proliferating NPC cells. To further investigate the potential biological roles of ADAM10 on NPC, cell experiments were carried out. We first investigated the expression of ADAM10 in four kinds of human NPC cell lines and the normal nasopharyngeal epithelial cell line. As shown in Figure 5, the expression of ADAM10 in four NPC cell lines

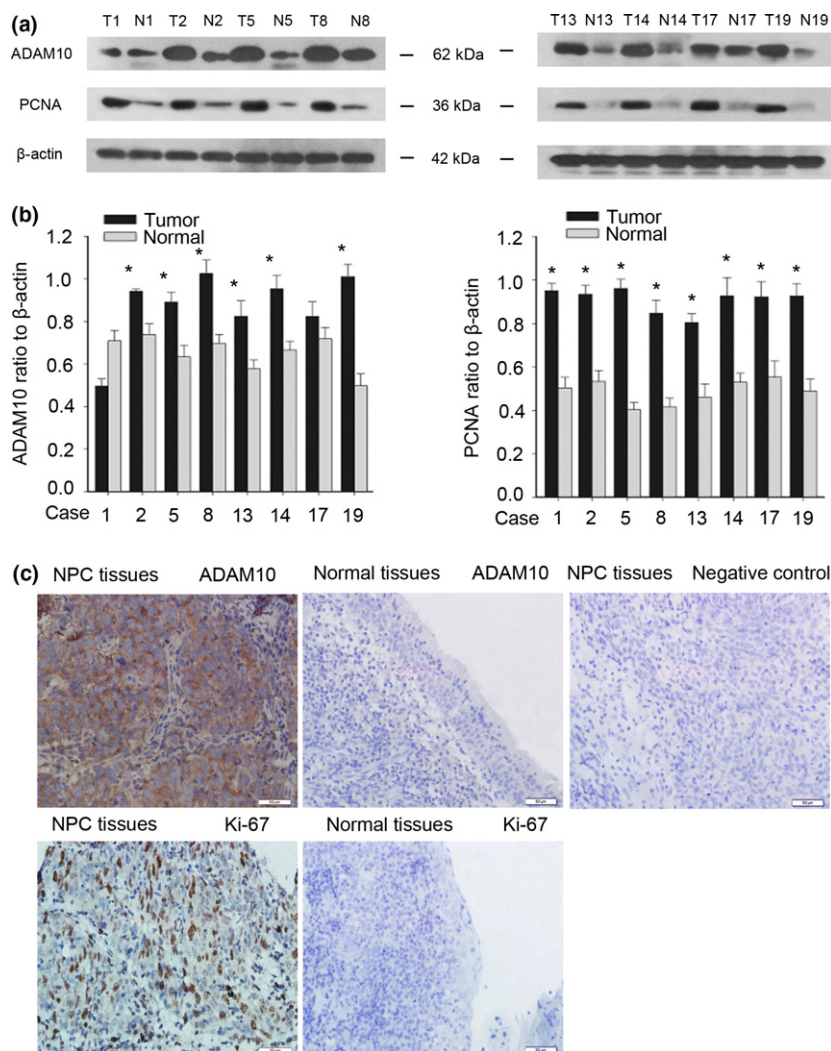


Fig. 2. Expression of a disintegrin and metalloprotease 10 (ADAM10) in nasopharyngeal carcinoma (NPC) tissues. (a) Protein levels of ADAM10 in 8 of 20 paired NPC (T) and non-cancerous nasopharyngeal tissues (N) by Western blotting. (b) Quantitative results of Western blot analysis. (c) Immunohistochemistry analysis of ADAM10 and Ki-67 expression in NPC tissues (original magnification, $\times 400$). β -actin was used as a loading control. Scale bar = 50 μ m. The same experiment was repeated at least three times.

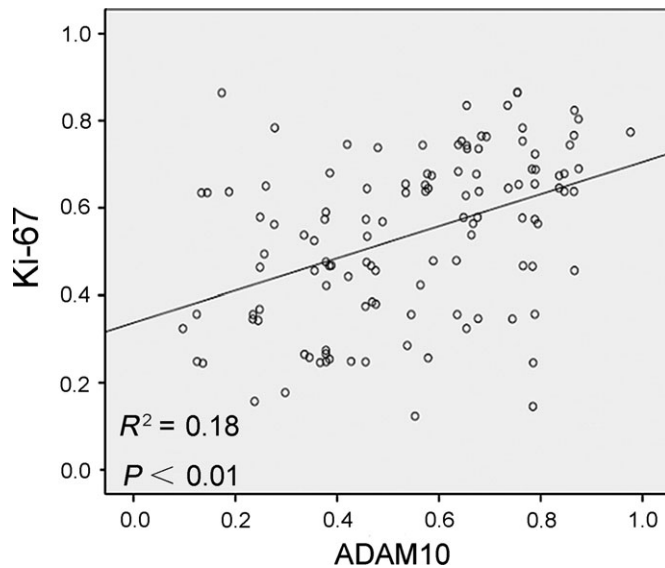


Fig. 3. Relationship between Ki-67 proliferation index and a disintegrin and metalloprotease 10 (ADAM10) expression in nasopharyngeal carcinoma. Scatterplot of Ki-67 versus ADAM10 with regression line showed a correlation using the Spearman's correlation coefficient ($P < 0.01$).

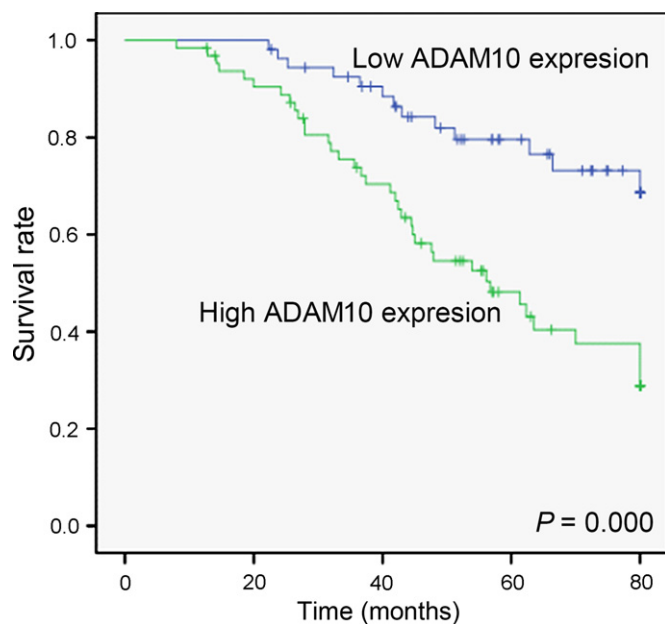


Fig. 4. Kaplan-Meier survival curves of patients with nasopharyngeal carcinoma based on a disintegrin and metalloprotease 10 (ADAM10) expression status. Patients in the high expression group had significantly poorer prognosis than those in the low expression group ($P < 0.05$, log-rank test).

increased dramatically, especially in CNE-2 and 5-8F cells, as compared with NP69 (Fig. 5).

Our findings above suggested that high ADAM10 expression might be related to the cell proliferation in NPC. So we detected the expression of ADAM10 during CNE-2 cell cycle progression. We found that CNE-2 cells were arrested in G₁ phase after serum deprivation for 72 h. As cells re-entered S

Table 2. Survival status and clinicopathological parameters in human nasopharyngeal carcinoma tissues ($n = 118$)

Clinicopathological parameters	Total	Survival status, <i>n</i>		<i>P</i> -value
		Alive	Dead	
Gender				
Male	76	47	29	0.246
Female	42	21	21	
Age, years				
<50	42	23	19	0.699
≥50	76	45	31	
Smoking				
No	84	52	32	0.155
Yes	34	16	18	
T classification				
T1-T2	82	51	31	0.158
T3-T4	36	17	19	
N classification				
N0-N1	81	48	33	0.689
N2-N3	37	20	17	
Distant metastasis				
No	90	59	31	0.002*
Yes	28	9	19	
TNM clinical stage				
I-II	46	35	11	0.001*
III-IV	72	33	39	
Ki-67				
Low expression	48	39	9	0.000*
High expression	70	29	41	
ADAM10				
Low expression	54	41	13	0.000*
High expression	64	27	37	

*Statistical analyses were carried out using Pearson's χ^2 -test. $P < 0.05$ was considered significant.

Table 3. Contribution of various potential prognostic factors to survival by Cox regression analysis on human nasopharyngeal carcinoma specimens

	Hazard ratio	<i>P</i> -value	95% CI
Distant metastasis			
M0 versus M1	1.365	0.398	0.664-2.807
TNM clinical stage			
I-II versus III-IV	3.652	0.030	1.134-11.754
Ki-67 expression			
Low versus high	2.675	0.017*	1.195-5.988
ADAM10 expression			
Low versus high	0.479	0.032	0.244-0.940

Statistical analyses were carried out using Cox's regression analysis. * $P < 0.05$ was considered significant. CI, confidence interval.

phase, S phase increased from 23.14% to 45.06% after serum addition (Fig. 6a). Western blot analysis showed that the expression of ADAM10 was increased as early as 4 h after serum addition and reached maximal at 36 h (Fig. 6b,c). The expression of PCNA was upregulated (Fig. 6b,c). Thus, these results indicated that ADAM10 might play a crucial role in regulation of the NPC cell cycle progress and cell proliferation.

ADAM10 knockdown inhibits cellular proliferation and promotes cell cycle arrest. CNE-2 cells were transfected with

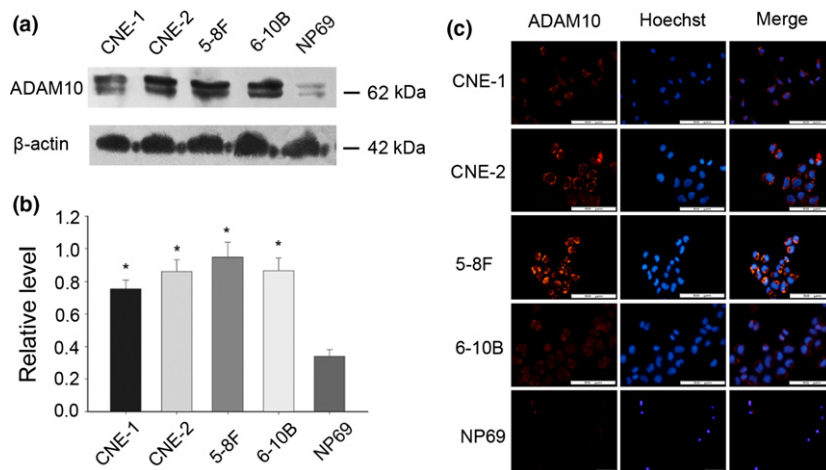


Fig. 5. Expression of a disintegrin and metalloprotease 10 (ADAM10) in nasopharyngeal carcinoma cell lines. (a–c) Western blot and immunofluorescence analysis of ADAM10 expression in CNE-1, CNE-2, 5-8F, 6-10B, and NP69 nasopharyngeal carcinoma cell lines. NP69 is an immortalized normal nasopharyngeal epithelial cell line. The same experiment was repeated at least three times. β-actin was used as control. * $P < 0.05$. Scale bar = 50 μm.

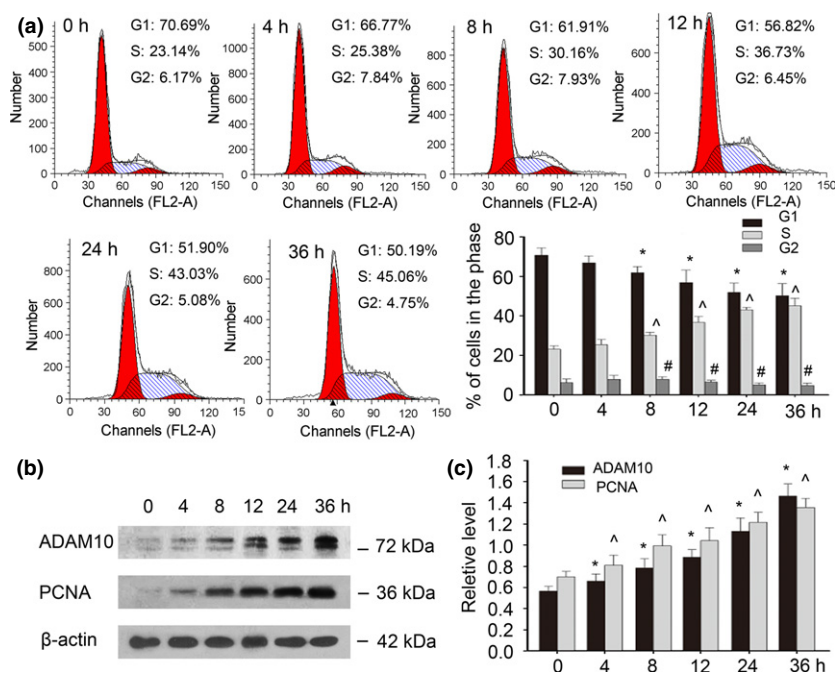


Fig. 6. Expression of a disintegrin and metalloprotease 10 (ADAM10) and proliferating cell nuclear antigen (PCNA) in proliferating nasopharyngeal carcinoma CNE-2 cells. (a) Flow cytometry quantitation of cell cycle progress in CNE-2. Cells synchronized at G_0/G_1 progressed into the cell cycle when serum was added for the indicated times. (b) CNE-2 cells were serum-starved for 72 h. Following release into serum, cell lysates were prepared and the expressions of ADAM10 and PCNA were analyzed by Western blot. (c) Quantitative results of Western blot analysis. β-actin was used as a loading control. Mean ± SEM of three independent experiments. * Δ # $P < 0.05$ vs 72 h.

ADAM10 siRNAs to knock down ADAM10 expression for investigating the role of ADAM10 on NPC. ADAM10-si2 had the highest knockdown efficiency (Fig. 7a–c). To assess the effects of ADAM10 knocked down on CNE-2 cell proliferation, CCK-8 and flow cytometry assays were carried out. The CCK-8 assay showed that CNE-2 cells treated with ADAM10 siRNAs exhibited a significant deceleration of cell proliferation compared with the control siRNA (Fig. 7d). Flow cytometry analysis revealed that CNE-2 cells accumulated in the G_0/G_1 phase, whereas the S phase decreased after transfection of siRNAs (Fig. 7e), suggesting that ADAM10 could promote the accumulation of the percent of cells in S phase and thus the cell growth.

ADAM10 knockdown inhibits cellular migration. We next examined the impact of ADAM10 knocked down on the migration of CNE-2 cells by wound-healing and Transwell assays. As shown in Figure 8(a,b), the percentage of wound closure at 24 h was significantly shorter in ADAM10 siRNA-treated cells than in control cells ($P < 0.05$). The silenced ADAM10 measurably inhibited cell migration to the bottom

chambers in Transwell assays (Fig. 8c,d). These data indicated that downregulation of ADAM10 reduced the migration of CNE-2 cells.

During the process of cancer metastasis, which is enabled by epithelial–mesenchymal transition (EMT), the disseminated cancer cells seem to acquire self-renewal abilities, similar to those shown by stem cells. To clear the mechanism of ADAM10 promoting migration, the expression levels of these EMT-associated markers in ADAM10 knocked down cells were compared with that of mock cells. As shown in Figure 8(e), the knockdown of ADAM10 in CNE-2 cells was accompanied by the upregulation of epithelial marker E-cadherin and downregulation of mesenchymal markers N-cadherin and vimentin (Fig. 8e). To confirm the role of ADAM10 in EMT, NP69 cells were transfected with GV362–ADAM10 to increase the expression of ADAM10. As shown in Figure 8(f), the increased expression of ADAM10 in NP69 cells was accompanied by the downregulation of E-cadherin and upregulation of N-cadherin and vimentin (Fig. 8f).

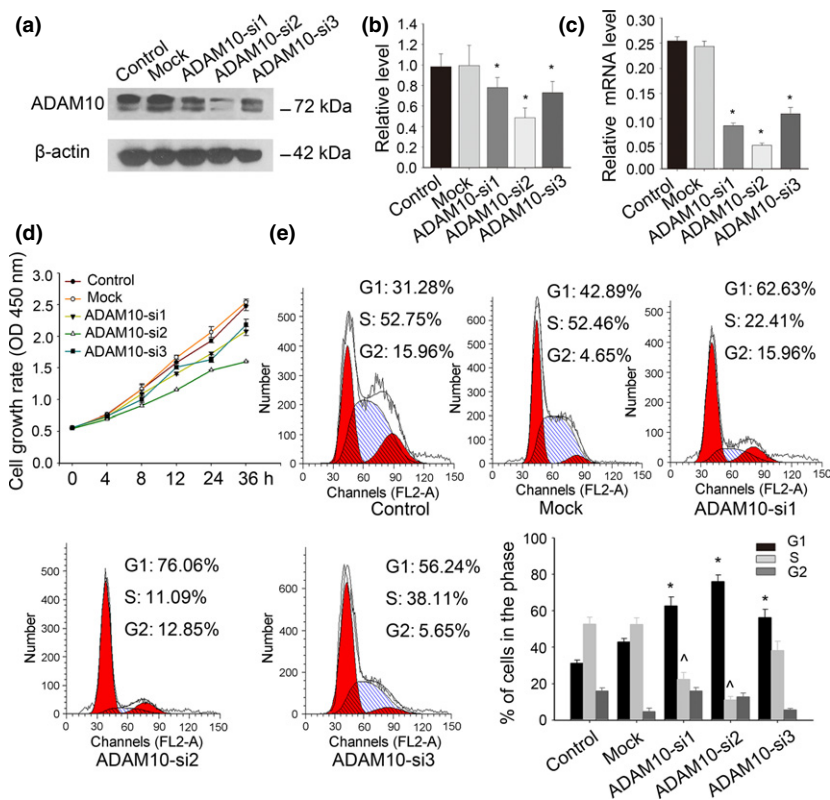


Fig. 7. Knockdown of a disintegrin and metalloprotease 10 (ADAM10) reduced CNE-2 nasopharyngeal carcinoma cell proliferation. (a–c) Interference efficiency was detected by Western blot analysis and PCR. (d) Cell proliferation was measured by CCK-8 assay. (e) Cell cycle analysis by flow cytometry in CNE-2 cells with ADAM10 downregulation. Data are mean \pm SEM. The same experiment was repeated at least three times. * $P < 0.05$ vs control.

Discussion

The genesis and development of NPC are comprehensive pathologic processes involving complex alterations in oncogenes, which play roles in cell proliferation, cell cycle control, and migration through regulation of multiple signal transduction pathways. In the present study, we investigated the influences of ADAM10 on NPC. Our findings indicated that overexpression of ADAM10 promotes the progression and migration of NPC.

The ADAMs family of proteins include a sequence that has similarities to the reprolysin family of snake venom metalloproteinases, and they share the metalloproteinase domain with MMPs.^(6,27) Functional ADAMs are involved in cleavage of diverse growth factors, membrane-bound cytokines, surface receptors, and adhesion molecules, thus increasing tumor proliferation, migration, and invasion.^(8,28) Certain members of the ADAMs family, including ADAM9, ADAM10, and ADAM17, are critical during genesis, development, and metastasis of cancers.^(21,29,30) ADAM10 has been reported to be overexpressed in various malignancies and to be involved in cancer progression.^(11–18) For example, Liu *et al.*⁽³¹⁾ established that downregulation of ADAM10 in HepG2 cells using RNA silencing significantly suppressed cell proliferation, migration, and invasion *in vitro*, and tumor growth *in vivo*. Furthermore, silencing ADAM10 decreased constitutive phosphorylation of phosphoinositide 3-kinase (PI3K) and Akt, which indicates that ADAM10 is involved in the activation of the PI3K/Akt signaling pathway.⁽³¹⁾ In addition, Endres *et al.*⁽²¹⁾ showed that ADAM10 can cleave collagen type IV in the basement membrane, which is relevant to tumor metastasis and proliferation. Moreover, ADAM10 mediated shedding of the extracellular domain of E-cadherin, which in turn resulted in translocation of β -catenin to the nucleus and led to enhanced proliferation.⁽²⁵⁾

However, the contribution of ADAM10 to NPC carcinogenesis remained largely unidentified and needs to be determined.

This study is the first to show that expression of ADAM10 was increased in NPC and that overexpressed ADAM10 was significantly associated with T classification, distant metastasis, and clinical stage (all $P < 0.05$). A positive correlation between ADAM10 and Ki-67 (a useful marker of tumor proliferative activity) was also observed in NPC. Those results showed that the overexpressed ADAM10 functioned as a potential oncogene and played an important role in the malignant progression and migration of NPC.

Furthermore, survival analysis confirmed that patients with ADAM10 overexpression had a shorter survival time. In addition, univariate and multivariate analysis revealed that overexpression of ADAM10 was a remarkable independent predictor of poor prognosis for NPC.

The biological functions of ADAM10 in NPC are still unclear. Our data revealed that the expression level of ADAM10 was related to that of PCNA and Ki-67. In addition, ADAM10 expression was upregulated during G₁ to S phase in NPC. It is known that the G₁/S phase transition is a major checkpoint for cell cycle progression. These results revealed that ADAM10 might contribute to carcinogenesis by regulating cell proliferation. Therefore, to further determine the role of ADAM10 in the proliferation of NPC, we knocked down ADAM10 using siRNA. After ADAM10 was silenced, the proliferation of CNE-2 cells was significantly inhibited. Cell cycle analysis showed that downregulation of ADAM10 decreased the cell population in the S phase as well as augmented G₁ cycle arrest, leading to the inability of CNE-2 cells to complete cell division. Taken together, these findings indicated that ADAM10 might contribute to tumor cell proliferation through the regulation of cell cycle distribution.

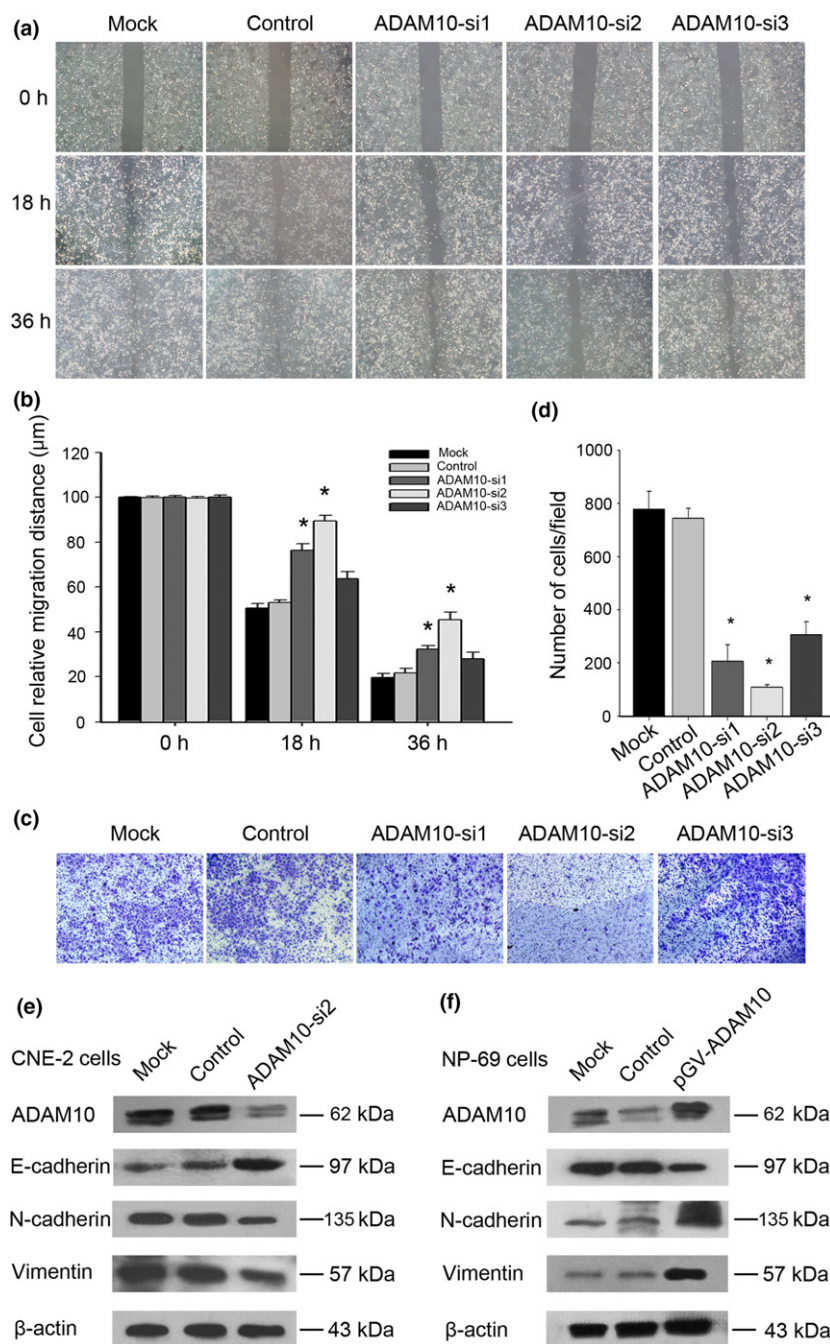


Fig. 8. Knockdown of a disintegrin and metalloprotease 10 (ADAM10) decreased the migration of CNE-2 nasopharyngeal carcinoma cells. (a) CNE-2 cells transfected with ADAM10 siRNAs showed a slower wound closure rate than cells transfected with non-specific siRNA or control. A representative image from three independent experiments is shown. (b) Wound-healing assays showed the relative migration distance of cells. (c, d) Knockdown of ADAM10 inhibited cell migration by Transwell assays. (d) Number of cells that invaded through the membrane was counted in 10 fields under $\times 20$ objective lens. Bars, SD. ($n = 3$; $P < 0.05$). (e) Western blot analysis of E-cadherin, N-cadherin, and vimentin in CNE-2 cells transfected with ADAM10 siRNAs and non-specific siRNA. (f) Western blot analysis of E-cadherin, N-cadherin, and vimentin in NP69 cells transfected with GV362-ADAM10 and mock GV362 vector. The same experiment was repeated at least three times. $*P < 0.05$.

It was reported that ADAM10 depletion could inhibit melanoma growth, as well as metastasis.⁽¹³⁾ In addition, ADAM10 correlates with metastasis of lung, hepatocellular carcinoma, and uveal melanoma.^(14,15,32) These data were in accord with our results, confirming the involvement of ADAM10 in NPC metastasis. Wound-healing assays and Transwell migration assays showed that silencing of ADAM10 inhibited the migration of CNE-2 cells. Epithelial–mesenchymal transition is a process that is accompanied by the dissolution of cell–cell junctions and loss of apical–basolateral polarity, resulting in the formation of migratory mesenchymal cells with invasive properties.^(33,34) EMT is important for tumor progression and metastasis.^(35,36) Furthermore, our results showed that silencing of ADAM10 increased the expression of epithelial marker E-cadherin and decreased the expression of mesenchymal

markers N-cadherin and vimentin. These data suggested that ADAM10 overexpression enhanced EMT in CNE-2 cells and promoted metastasis of NPC.

In summary, our data offer convincing evidence that ADAM10 is overexpressed in NPC and the level of ADAM10 is associated with clinical progression and poor prognosis. Furthermore, we show that ADAM10 may be involved in cell proliferation, migration, and invading abilities of NPC cells, which makes it a novel therapeutic target for NPC treatment.

Acknowledgements

This work was supported by grants from the Chinese National Natural Science Foundation (Grant Nos. 81172841, 81202368, and 81471603), China Postdoctoral Science Foundation (Grant No. 2013M541708), the

Natural Science Foundation of Jiangsu Province (Grant No. SBK2015022581), the project of “333 Natural Science Foundation” of Jiangsu Grant (Grant No. BRA2013286), the “Top Six Types of Talents” Financial Assistance of Jiangsu Province (Grant No. 6), and the project of Jiangsu Provincial Health Department (Grant No. Z201005).

Disclosure Statement

The authors have no conflict of interest.

References

- Tang F, Zou F, Peng Z *et al.* N, N'-dinitrosopiperazine-mediated ezrin protein phosphorylation via activation of Rho kinase and protein kinase C is involved in metastasis of nasopharyngeal carcinoma 6–10B cells. *J Biol Chem* 2011; **286**: 36956–67.
- Wei KR, Yu YL, Yang YY *et al.* Epidemiological trends of nasopharyngeal carcinoma in China. *Asian Pac J Cancer Prev* 2010; **11** (1): 29–32.
- Parkin DM, Bray F, Ferlay J, Pisani P. Global cancer statistics, 2002. *CA Cancer J Clin* 2005; **55** (2): 74–108.
- Lin YT, Wang LF, Hsu YC. Curcuminoids suppress the growth of pharynx and nasopharyngeal carcinoma cells through induced apoptosis. *J Agric Food Chem* 2009; **57**: 3765–70.
- Chan AT, Leung SF, Ngan RK *et al.* Overall survival after concurrent cisplatin-radiotherapy compared with radiotherapy alone in locoregionally advanced nasopharyngeal carcinoma. *J Natl Cancer Inst* 2005; **97**: 536–9.
- Mochizuki S, Okada Y. ADAMs in cancer cell proliferation and progression. *Cancer Sci* 2007; **98** (5): 621–8.
- Klein T, Bischoff R. Active metalloproteases of the A Disintegrin and Metalloprotease (ADAM) family: biological function and structure. *J Proteome Res* 2011; **10** (1): 17–33.
- Seals DF, Courtneidge SA. The ADAMs family of metalloproteases: multidomain proteins with multiple functions. *Genes Dev* 2003; **17** (1): 7–30.
- Lu X, Lu D, Scully M, Kakkar V. ADAM proteins – therapeutic potential in cancer. *Curr Cancer Drug Targets* 2008; **8** (8): 720–32.
- Murphy G. The ADAMs: signalling scissors in the tumour microenvironment. *Nat Rev Cancer* 2008; **8**: 929–41.
- Zhang W, Liu S, Liu K *et al.* A disintegrin and metalloprotease (ADAM)10 is highly expressed in hepatocellular carcinoma and is associated with tumour progression. *J Int Med Res* 2014; **42**: 611–8.
- Ko SY, Lin SC, Wong YK, Liu CJ, Chang KW, Liu TY. Increase of disintegrin metalloprotease 10 (ADAM10) expression in oral squamous cell carcinoma. *Cancer Lett* 2007; **245** (1–2): 33–43.
- Lee SB, Schramme A, Doberstein K *et al.* ADAM10 is upregulated in melanoma metastasis compared with primary melanoma. *J Invest Dermatol* 2010; **130**: 763–73.
- Guo J, He L, Yuan P *et al.* ADAM10 overexpression in human non-small cell lung cancer correlates with cell migration and invasion through the activation of the Notch1 signaling pathway. *Oncol Rep* 2012; **28**: 1709–18.
- Lendeckel U, Kohl J, Arndt M, Carl-McGrath S, Donat H, Rocken C. Increased expression of ADAM family members in human breast cancer and breast cancer cell lines. *J Cancer Res Clin Oncol* 2005; **131** (1): 41–8.
- Gaida MM, Haag N, Gunther F *et al.* Expression of A disintegrin and metalloprotease 10 in pancreatic carcinoma. *Int J Mol Med* 2010; **26** (2): 281–8.
- Wang YY, Ye ZY, Li L, Zhao ZS, Shao QS, Tao HQ. ADAM 10 is associated with gastric cancer progression and prognosis of patients. *J Surg Oncol* 2011; **103** (2): 116–23.
- Fu L, Liu N, Han Y, Xie C, Li Q, Wang E. ADAM10 regulates proliferation, invasion, and chemoresistance of bladder cancer cells. *Tumour Biol* 2014; **35**: 9263–8.
- Yue Y, Shao Y, Luo Q, Shi L, Wang Z. Downregulation of ADAM10 expression inhibits metastasis and invasiveness of human hepatocellular carcinoma HepG2 cells. *Biomed Res Int* 2013; **2013**: 434561.
- Zhao H, Zhu J, Cui K *et al.* Bioluminescence imaging reveals inhibition of tumor cell proliferation by Alzheimer's amyloid beta protein. *Cancer Cell Int* 2009; **9**: 15.
- Endres K, Fahrenholz F. Upregulation of the alpha-secretase ADAM10—risk or reason for hope? *FEBS J* 2010; **277**: 1585–96.
- Lin T, Gu J, Zhang L *et al.* Enhancing adenovirus-mediated gene transfer in vitro and in vivo by addition of protamine and hydrocortisone. *J Gene Med* 2003; **5**: 868–75.
- Duffy MJ, Mullooly M, O'Donovan N *et al.* The ADAMs family of proteases: new biomarkers and therapeutic targets for cancer? *Clin Proteomics* 2011; **8** (1): 9.
- Sahin U, Weskamp G, Kelly K *et al.* Distinct roles for ADAM10 and ADAM17 in ectodomain shedding of six EGFR ligands. *J Cell Biol* 2004; **164**: 769–79.
- Maretzky T, Reiss K, Ludwig A *et al.* ADAM10 mediates E-cadherin shedding and regulates epithelial cell-cell adhesion, migration, and beta-catenin translocation. *Proc Natl Acad Sci USA* 2005; **102**: 9182–7.
- You Y, Yao H, You B *et al.* Clinical significance of HAX-1 expression in laryngeal carcinoma. *Auris Nasus Larynx* 2015; **42**: 299–304.
- Rocks N, Paulissen G, El Hour M *et al.* Emerging roles of ADAM and ADAMTS metalloproteinases in cancer. *Biochimie* 2008; **90** (2): 369–79.
- Edwards DR, Handsley MM, Pennington CJ. The ADAM metalloproteinases. *Mol Aspects Med* 2008; **29**: 258–89.
- Wu K, Liao M, Liu B, Deng Z. ADAM-17 over-expression in gallbladder carcinoma correlates with poor prognosis of patients. *Med Oncol* 2011; **28**: 475–80.
- Zubel A, Flechtenmacher C, Edler L, Alonso A. Expression of ADAM9 in CIN3 lesions and squamous cell carcinomas of the cervix. *Gynecol Oncol* 2009; **114**: 332–6.
- Liu S, Zhang W, Liu K, Ji B, Wang G. Silencing ADAM10 inhibits the in vitro and in vivo growth of hepatocellular carcinoma cancer cells. *Mol Med Rep* 2015; **11** (1): 597–602.
- Gangemi R, Amaro A, Gino A *et al.* ADAM10 correlates with uveal melanoma metastasis and promotes in vitro invasion. *Pigment Cell Melanoma Res* 2014; **27**: 1138–48.
- Singh A, Settleman J. EMT, cancer stem cells and drug resistance: an emerging axis of evil in the war on cancer. *Oncogene* 2010; **29**: 4741–51.
- Thiery JP. Epithelial-mesenchymal transitions in development and pathologies. *Curr Opin Cell Biol* 2003; **15**: 740–6.
- Kang Y, Massague J. Epithelial-mesenchymal transitions: twist in development and metastasis. *Cell* 2004; **118** (3): 277–9.
- Thiery JP, Acloque H, Huang RY, Nieto MA. Epithelial-mesenchymal transitions in development and disease. *Cell* 2009; **139**: 871–90.