



OPEN

Trend in neuraxial morphine use and postoperative analgesia after cesarean delivery in Japan from 2005 to 2020

Hiroshi Yonekura^{1,2✉}, Yusuke Mazda³, Shohei Noguchi³, Hironaka Tsunobuchi¹ & Motomu Shimaoka²

The increasing rate of cesarean deliveries warrants obstetric anesthesiologists to deliver high-quality post-cesarean delivery analgesia. The aim of this study was to evaluate the temporal trends in the use of neuraxial morphine for cesarean deliveries and to describe the current postoperative analgesia practices. A retrospective cohort study using nationwide health insurance claims databases was conducted from 2005 to 2020 in Japan. Pregnant women who had undergone cesarean deliveries were included. The annual rate of neuraxial morphine use was extracted and analyzed. Additionally, we explored the patient- and facility-level factors associated with neuraxial morphine use through a multilevel logistic regression analysis. The cohort included 65,208 cesarean delivery cases from 2275 institutions. The prevalence of neuraxial morphine use was 16.0% (95% confidence interval [CI], 15.8–16.3) in the overall cohort. Intrathecal morphine was used in 20.6% (95% CI, 20.2–21.0) of spinal anesthesia cases. The trend in neuraxial morphine use steadily increased from 2005 to 2020. The significant predictors of neuraxial morphine use included spinal anesthesia, recent surgery, large medical facilities, and academic hospitals. Variations in the utilization of postoperative analgesia were observed. Our study described the current trend of neuraxial morphine use and the variation in postoperative analgesia practice in Japan.

The cesarean delivery rate is increasing in Japan (18.5% in 2013) and worldwide^{1–3}. Compared to Western countries, small-scale obstetrical facilities throughout Japan provide delivery services through a decentralized delivery care system; there are 2500 medical facilities for approximately 1 million deliveries per year, and 45.5% of all deliveries are performed in small-scale private obstetric facilities with < 20 beds (clinics) managed by a few obstetricians^{4,5}. According to Japan's 2020 Vital Statistics of the Ministry of Health, Labour, and Welfare, deliveries at hospitals and clinics (facilities with < 20 beds) accounted for 69% and 31% of all cesarean deliveries, respectively⁵. Despite this unique Japanese perinatal delivery care system, the maternal mortality rate in Japan is one of the lowest among the high-income countries (4 per 100,000 live births)^{4,6}.

As the current strategy for post-cesarean delivery analgesia, multimodal analgesia has become the gold standard⁷. The common multimodal analgesia deploys neuraxial morphine and scheduled non-opioid analgesia, such as acetaminophen and nonsteroidal anti-inflammatory drugs (NSAIDs), to spare systemic opioids⁸. Among the multimodal analgesia components, neuraxial morphine is the most effective for post-cesarean delivery analgesia and its use is recommended by the practice guidelines because of its low cost, superior analgesic quality, and prolonged analgesic effects^{9,10}. Therefore, the current epidemiology of neuraxial morphine use is important for establishing benchmarks and could provide invaluable information to help clinicians develop optimal post-cesarean delivery analgesia strategies.

To describe the real-world clinical practice of cesarean deliveries, maternal health research should focus on cases at hospitals and clinics. However, to date, the utilization of neuraxial morphine across diverse facilities has not been well studied in Japan. Thus, this study aimed to evaluate the temporal trends in the utilization of

¹Department of Anesthesiology and Pain Medicine, Fujita Health University Bantane Hospital, 3-6-10 Otoubashi, Nakagawa-ku, Nagoya, Aichi 454-8509, Japan. ²Department of Molecular Pathobiology and Cell Adhesion Biology, Mie University Graduate School of Medicine, Mie, Japan. ³Department of Obstetric Anesthesiology, Center for Maternal-Fetal and Neonatal Medicine, Saitama Medical Center, Saitama Medical University, Kawagoe, Japan. ✉email: hiroshi.yonekura@fujita-hu.ac.jp

Characteristic	All cohort (N = 65,208)	Neuraxial morphine (+) (N = 10,457)	Neuraxial morphine (-) (N = 54,751)	Absolute SMD	P value
Age, year, mean \pm SD	33.6 \pm 5.0	34.1 \pm 5.0	33.5 \pm 4.9	0.13	< 0.001
Age, year					< 0.001
< 35	38,841 (59.6)	5805 (55.5)	33,036 (60.3)	0.098	
35–39	19,635 (30.1)	3312 (31.7)	16,323 (29.8)	0.04	
40–44	6181 (9.5)	1211 (11.6)	4970 (9.1)	0.08	
> 44	551 (0.8)	129 (1.2)	422 (0.8)	0.05	
Maternal comorbidity index score, median (IQR)	1 (0–2)	1 (0–2)	1 (0–2)	0.15	< 0.001
Maternal comorbidity index score					< 0.001
0	26,435 (40.5)	3615 (34.6)	22,820 (41.7)	0.15	
1–2	30,342 (46.5)	5046 (48.3)	25,296 (46.2)	0.04	
> 2	8431 (12.9)	1796 (17.2)	6635 (12.1)	0.14	
Charlson comorbidity index score, median (IQR)	0 (0–0)	0 (0–0)	0 (0–0)	0.06	< 0.001
Charlson comorbidity index					< 0.001
< 2	63,920 (98.0)	10,179 (97.3)	53,741 (98.2)	0.06	
\geq 2	1288 (2.0)	278 (2.7)	1010 (1.8)	0.04	
Type of surgery					< 0.001
Elective (K898-2)	40,553 (62.2)	6143 (58.8)	34,410 (62.9)	0.08	
Emergency (K898-1)	23,862 (36.6)	4168 (39.9)	19,694 (36.0)	0.08	
Cesarean delivery with placenta previa or preterm birth (K898-3)*	793 (1.2)	146 (1.4)	647 (1.2)	0.02	
Fiscal year					< 0.001
2005–2009	2569 (3.9)	272 (2.6)	2297 (4.2)	0.09	
2010–2014	15,443 (23.7)	1729 (16.5)	13,714 (25.1)	0.21	
2015–2020	47,196 (72.4)	8456 (80.9)	38,740 (70.8)	0.24	
Number of beds					< 0.001
0–19	21,094 (32.3)	1723 (16.5)	19,371 (35.4)	0.44	
20–99	6536 (10.0)	671 (6.4)	5865 (10.7)	0.15	
100–199	2258 (3.5)	407 (3.9)	1851 (3.4)	0.03	
200–299	2278 (3.5)	484 (4.6)	1794 (3.3)	0.07	
300–499	10,549 (16.2)	2574 (24.6)	7975 (14.6)	0.26	
\geq 500	22,493 (34.5)	4598 (44.0)	17,895 (32.7)	0.23	
Academic hospital	7117 (10.9)	1841 (17.6)	5276 (9.6)	0.23	< 0.001

Table 1. Patient- and facility-level characteristics of the study cohort stratified according to the use of neuraxial morphine or not. Values are given as frequencies (%) unless stated otherwise. Absolute SMD > 0.1 indicates significant imbalance between anesthesia with and without neuraxial morphine. IQR interquartile range, SD standard deviation, SMD standardized mean difference. *Only available procedure code in 2010 and 2016.

neuraxial morphine for cesarean deliveries over a 15-year period and to describe the current postoperative analgesia practice.

Results

The initial cohort of patients who underwent cesarean delivery consisted of 77,640 eligible procedures. We excluded 12,432 cases for the following reasons: general anesthesia was used ($n = 10,972$) and anesthesia records were missing ($n = 1460$). Finally, 65,208 procedures (56,307 women) performed at 2275 institutions between January 1, 2005, and March 31, 2020, were included in the final cohort.

Table 1 summarizes the demographic and facility characteristics of the patients who received and did not receive neuraxial morphine. The patients' mean (standard deviation [SD]) age was 33.6 (5.0) years. There were 23,862 emergency surgical cases (36.6% of the total procedures). Neuraxial morphine was used in 16.0% of the total procedures. The group that received neuraxial morphine was more likely to have a recent surgery (2015–2020) compared with the group that did not receive neuraxial morphine. The group that received neuraxial morphine was more likely to undergo cesarean deliveries in larger medical facilities, especially those with ≥ 300 beds and academic hospitals (Table 1).

Detailed descriptions of the intra/postoperative analgesic drugs used during hospitalization are shown in Tables 2 and 3. Table 2 shows the characteristics of neuraxial anesthesia use for cesarean deliveries. The group that received neuraxial morphine was more likely to receive spinal anesthesia but less likely to receive epidural anesthesia (combined spinal–epidural anesthesia [CSEA] and epidural only) and continuous epidural analgesia (22.7% vs. 38.5%) compared with the group that did not receive neuraxial morphine.

Neuraxial anesthesia	All cohort (N = 65,208)	Neuraxial morphine (+) (N = 10,457)	Neuraxial morphine (-) (N = 54,751)	Absolute SMD	P value
Type of neuraxial anesthesia					< 0.001
Spinal anesthesia	39,948 (61.3)	8215 (78.6)	31,733 (58.0)	0.45	
CSEA	21,137 (32.4)	1775 (17.0)	19,362 (35.4)	0.43	
Epidural anesthesia	4123 (6.3)	467 (4.5)	3656 (6.7)	0.097	
Local anesthetic for spinal anesthesia	61,085 (93.7)	9990 (95.5)	51,095 (93.3)	0.097	< 0.001
Bupivacaine for spinal anesthesia	57,217 (87.7)	9807 (93.8)	47,410 (86.6)	0.24	< 0.001
0.5% hyper-baric	52,617	9164	43,453	0.22	< 0.001
0.5% iso-baric	4611	647	3964	0.04	< 0.001
Dibucaine	3236 (5.0)	92 (0.9)	3144 (5.7)	0.27	< 0.001
Tetracaine	670 (1.0)	92 (0.9)	578 (1.1)	0.02	0.10
Local anesthetic for epidural anesthesia	28,171 (43.2)	2809 (26.9)	25,362 (46.3)	0.41	< 0.001
2% Lidocaine	3839 (5.9)	553 (5.3)	3286 (6.0)	0.03	0.005
2% Mepivacaine	2851 (4.4)	233 (2.2)	2618 (4.8)	0.14	< 0.001
Ropivacaine	21,065 (32.3)	1996 (19.1)	19,069 (34.8)	0.36	< 0.001
Levobupivacaine	4641 (7.1)	333 (3.2)	4308 (7.9)	0.21	< 0.001
Bupivacaine excluding spinal anesthesia use	1497 (2.3)	170 (1.6)	1327 (2.4)	0.06	< 0.001
Continuous infusion of local anesthetics after epidural anesthesia	23,462 (36.0)	2373 (22.7)	21,089 (38.5)	0.35	< 0.001

Table 2. Characteristics of neuraxial anesthesia used for cesarean deliveries. Values are given as frequencies (%) unless stated otherwise. Absolute SMD > 0.1 indicates significant imbalance between anesthesia with and without neuraxial morphine. CSEA combined spinal–epidural anesthesia, SMD standardized mean difference.

Table 3 shows the characteristics of intra/postoperative analgesic use during hospitalization. The most commonly used non-opioid analgesics for patients who had undergone cesarean deliveries were loxoprofen (56.2%), diclofenac (52.3%), and acetaminophen (36.5%). The usage proportions of acetaminophen, NSAIDs, NSAIDs plus acetaminophen, and NSAIDs plus acetaminophen–opioid combinations were 36.5%, 87.9%, 31.5%, and 0.4%, respectively. Intravenous opioids, such as pentazocine (39.7%) and buprenorphine (6.2%), were administered, whereas oral opioids, such as morphine, acetaminophen/tramadol combinations, and tramadol, were seldom prescribed (< 1%). Hydrocodone, hydromorphone, methadone, oxycodone, oxycodone, and tapentadol were not prescribed in our cohort. The group that received neuraxial morphine was more likely to receive combined use of NSAIDs and acetaminophen (36.2% [with neuraxial morphine] vs. 30.6% [without neuraxial morphine]), acetaminophen (43.9% vs. 35.1%), acetaminophen/tramadol combination (2.2% vs. 0.1%), and fentanyl (67.8% vs. 43.9%). The group that did not receive neuraxial morphine was more likely to receive NSAIDs, specifically acetic derivatives, such as diclofenac and indomethacin, opioids (buprenorphine and pentazocine), and ketamine, compared with the group that received neuraxial morphine.

The group that received neuraxial morphine was more likely to receive naloxone and metoclopramide compared with the group that did not receive neuraxial morphine, but this difference was not a significant imbalance.

Trends in the rate of neuraxial morphine use among women who had undergone cesarean deliveries. Figure 1 shows the annual rates of neuraxial morphine use and types of surgery (overall, elective, and emergency) from 2005 to 2020 according to the Japanese procedure code (the entire cohort: elective [K898-2] and emergency [code K898-1]). The procedure code K898-3, defined as cesarean delivery with placenta previa or preterm birth, was only available in 2010 and 2016; therefore, this category was not used. The rates of neuraxial morphine use of the entire cohort in 2005, 2010, and 2020 were 13.4%, 9.4%, and 21.5%, respectively. The temporal trend in neuraxial morphine use for emergency cesarean deliveries also gradually increased from 11.0% in 2005 to 24.8% in 2020. The prevalence of neuraxial morphine use was 16.0% (95% confidence interval [CI], 15.8–16.3) in the overall cohort and 17.5% (95% CI, 17.0–18.0) in emergency cases (Supplementary Table S1).

Figure 2 shows the annual rates of neuraxial morphine use and the types of anesthesia (spinal, CSEA, and epidural anesthesia) from 2005 to 2020. The rates of neuraxial morphine use in CSEA and epidural anesthesia cases decreased with fluctuations, but those in spinal anesthesia cases steadily increased (from 3.7% in 2005 to 29.8% in 2020, P for trend < 0.001) (Supplementary Table S2).

Figure 3 shows the annual rates of intrathecal morphine use in spinal anesthesia cases according to the type of cesarean delivery from 2005 to 2020. The result of this sensitivity analysis was consistent with that of the main analysis (Supplementary Table S3).

Multilevel logistic analysis of predictors associated with neuraxial morphine use in cesarean deliveries. Table 4 shows the results of the multilevel logistic regression analysis performed to examine the predictive factors associated with neuraxial morphine administration for cesarean deliveries. Significant strong predictors of neuraxial morphine use included spinal anesthesia (adjusted odds ratio [AOR], 11.26; 95% CI, 9.91–12.79) relative to CSEA, year of surgery (2015–2020) (AOR, 2.89; 95% CI, 2.27–3.69) relative to 2005–2009,

Analgesia	All cohort (N=65,208)	Neuraxial morphine (+) (N=10,457)	Neuraxial morphine (-) (N=54,751)	Absolute SMD	P value
Intra/postoperative analgesia administered during the hospitalization of index surgery					
Acetaminophen					
Acetaminophen	23,829 (36.5)	4589 (43.9)	19,240 (35.1)	0.18	<0.001
Acetaminophen and tramadol	285 (0.4)	230 (2.2)	55 (0.1)	0.20	<0.001
NSAIDs					
Aspirin	9 (0.0)	1 (0.0)	8 (0.0)	0.01	1.00
Acetic derivatives	35,683 (54.7)	4249 (40.6)	31,434 (57.4)	0.34	<0.001
Indomethacin	1701 (2.6)	30 (0.3)	1671 (3.1)	0.22	<0.001
Diclofenac	34,107 (52.3)	4217 (40.3)	29,890 (54.6)	0.29	<0.001
Oxicams	312 (0.5)	14 (0.1)	298 (0.5)	0.07	<0.001
Propionates	40,708 (62.4)	6654 (63.6)	34,054 (62.2)	0.03	0.006
Ibuprofen	1065 (1.6)	167 (1.6)	898 (1.6)	0.003	0.75
Ketoprofen	791 (1.2)	8 (0.1)	783 (1.4)	0.16	<0.001
Flurbiprofen	9394 (14.4)	1333 (12.8)	8061 (14.7)	0.06	<0.001
Coxibs	285 (0.4)	33 (0.3)	252 (0.5)	0.02	0.040
Celecoxib	285 (0.4)	33 (0.3)	252 (0.5)	0.02	0.040
Others					
Loxoprofen	36,657 (56.2)	5983 (57.2)	30,674 (56.0)	0.02	0.025
Mefenamic acid	1258 (1.9)	234 (2.2)	1024 (1.9)	0.03	0.012
Combined use of NSAIDs and acetaminophen					
NSAIDs + Acetaminophen	20,551 (31.5)	3786 (36.2)	16,765 (30.6)	0.12	<0.001
NSAIDs + Acetaminophen–opioid combination	265 (0.4)	212 (2.0)	53 (0.1)	0.19	<0.001
Opioid*					
Buprenorphine	4034 (6.2)	94 (0.9)	3940 (7.2)	0.32	<0.001
Fentanyl	31,122 (47.7)	7093 (67.8)	24,029 (43.9)	0.50	<0.001
Morphine (po)	12 (0.0)	1 (0.0)	11 (0.0)	0.01	0.70
Pethidine	152 (0.2)	45 (0.4)	107 (0.2)	0.04	<0.001
Pentazocine	25,860 (39.7)	1980 (18.9)	23,880 (43.6)	0.55	<0.001
Tramadol (po)	274 (0.4)	95 (0.9)	179 (0.3)	0.07	<0.001
Miscellaneous					
Ketamine	961 (1.5)	38 (0.4)	923 (1.7)	0.13	<0.001
Gabapentin	1 (0.0)	0	1 (0.0)	0.01	1.00
Pregabalin	6 (0.0)	0	6 (0.0)	0.02	0.60
Naloxone	138 (0.2)	64 (0.6)	74 (0.1)	0.08	<0.001
Metoclopramide	22,742 (34.9)	4012 (38.4)	18,730 (34.2)	0.09	<0.001
Domperidone	137 (0.2)	47 (0.4)	90 (0.2)	0.05	<0.001
Prochlorperazine	117 (0.2)	22 (0.2)	95 (0.2)	0.01	0.41
Droperidol	12,432 (19.1)	1830 (17.5)	10,602 (19.4)	0.05	<0.001

Table 3. Intra/postoperative analgesics administered during hospitalization. Values are given as frequencies (%) unless stated otherwise. Absolute SMD > 0.1 indicates significant imbalance between anesthesia with and without neuraxial morphine. *No use of hydrocodone, hydromorphone, methadone, oxycodone, oxymorphone, and tapentadol. NSAIDs nonsteroidal anti-inflammatory drugs, PO per os, SMD standardized mean difference.

number of beds (≥ 500 beds) (AOR, 12.05; 95% CI, 4.81–30.19) relative to <500 beds, and academic hospital (AOR, 3.83; 95% CI, 1.07–13.73). Patient-level characteristics, such as maternal age, maternal comorbidity index (MCI), and Charlson comorbidity index (CCI), were not significantly associated with the use of neuraxial morphine. The area under the receiver-operating-characteristic (ROC) curve of the model was 0.69. ROC analysis using cross-validation revealed no change in the area under the receiver-operating-characteristic (AUROC) curve (mean AUROC = 0.68), indicating that the model was robust. Sensitivity analysis, which was limited to intrathecal morphine, showed results similar to those of the main analysis (Supplementary Table S4).

Discussion

In the present study, we evaluated the utilization of neuraxial morphine with temporal trends over a 15-year period and described the current postoperative analgesia practice. Our analysis revealed that the prevalence of neuraxial morphine was 16.0% in the overall cohort. Intrathecal morphine was used in 20.6% of spinal anesthesia

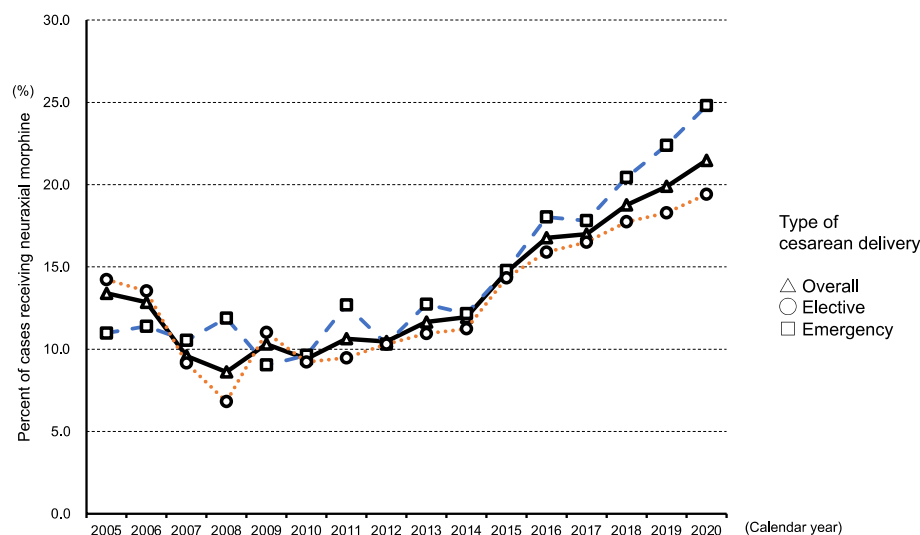


Figure 1. The annual rates of neuraxial morphine use and type of surgery (overall, elective, and emergency) from 2005 to 2020.

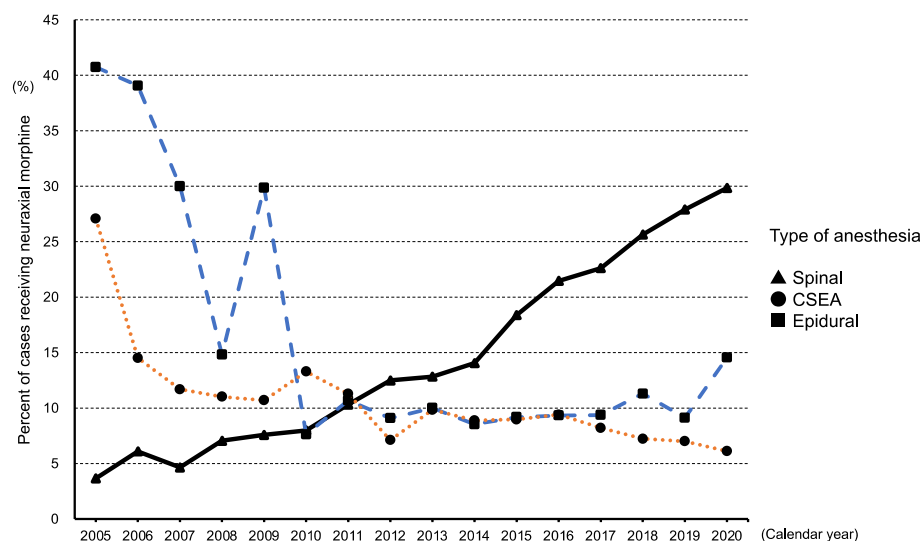


Figure 2. The annual rates of neuraxial morphine use and type of anesthesia (spinal, combined spinal–epidural anesthesia [CSEA], and epidural anesthesia) from 2005 to 2020.

cases. The usage rate of neuraxial morphine steadily increased from 2005 to 2020. Moreover, the significant predictors of neuraxial morphine use included spinal anesthesia, recent surgery, large medical facilities, and academic hospitals.

The increasing rate of cesarean deliveries worldwide and in Japan warrants anesthesiologists to deliver safe and high-quality anesthetic care during the perioperative period. Recently, enhanced recovery after cesarean delivery (ERAC) has been introduced and has become the standard for improving the quality of perioperative care and patient satisfaction in cesarean deliveries⁷. Among the components of ERAC, neuraxial morphine and multimodal opioid-sparing analgesia are recommended to improve the quality of care for cesarean deliveries and promote patient recovery after childbirth. However, several knowledge gaps in the current post-cesarean delivery analgesia practice still exist. First, detailed information on the current analgesia practices for cesarean deliveries in diverse nationwide facilities is limited. Therefore, a trend analysis of the use of neuraxial morphine in cesarean deliveries and a descriptive study of the current postoperative management practices are valuable for examining the quality of perioperative maternal health care. Second, patient- and facility-specific factors associated with the use of neuraxial morphine are unknown. This information could help identify barriers to standardizing the use of neuraxial morphine and improving perioperative analgesic management.

Neuraxial morphine and multimodal analgesia are the gold standards for pain management after cesarean delivery. No study has reported the exact number of women undergoing cesarean delivery who received

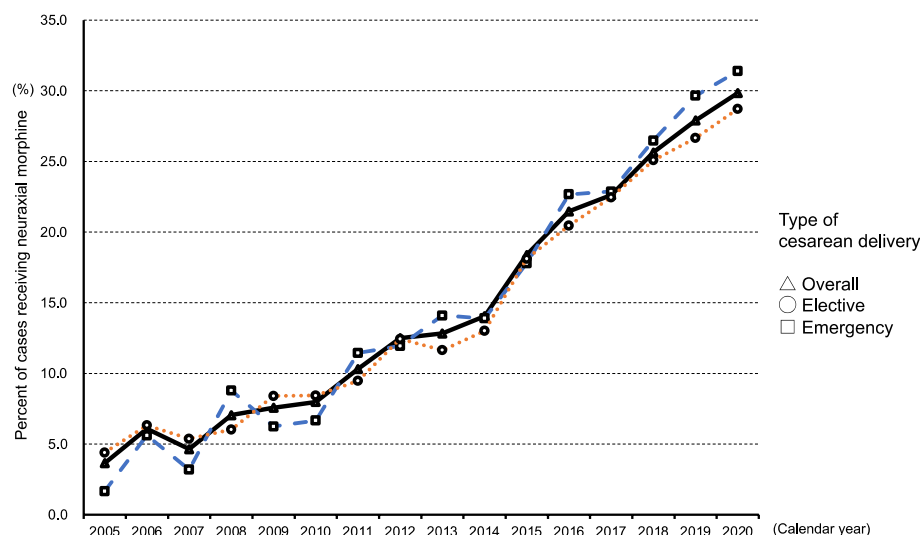


Figure 3. The annual rates of intrathecal morphine use in spinal anesthesia cases and type of surgery (overall, elective, and emergency) from 2005 to 2020.

Characteristic	Adjusted OR	95% CI	P value
Age, year			
< 35	Ref		
35–39	0.99	0.88–1.11	0.87
40–44	1.04	0.89–1.22	0.60
> 44	0.95	0.64–1.41	0.80
Maternal comorbidity index score			
0	Ref		
1–2	1.05	0.93–1.18	0.42
> 2	1.10	0.94–1.29	0.24
Charlson comorbidity index score			
< 2	Ref		
≥ 2	1.08	0.84–1.40	0.54
Type of neuraxial anesthesia			
CSEA	Ref		
Epidural anesthesia	1.89	1.43–2.48	< 0.001
Spinal anesthesia	11.26	9.91–12.79	< 0.001
Type of surgery			
Elective (K898-2)	Ref		
Emergency (K898-1)	0.90	0.82–0.98	0.016
Cesarean delivery with placenta previa or preterm birth (K898-3)	0.91	0.66–1.24	0.54
Fiscal year			
2005–2009	Ref		
2010–2014	1.03	0.80–1.33	0.80
2015–2020	2.89	2.27–3.69	< 0.001
Number of beds			
< 500	Ref		
≥ 500	12.05	4.81–30.19	< 0.001
Teaching facility			
Non-academic hospital	Ref		
Academic hospital	3.83	1.07–13.73	0.040

Table 4. Characteristics associated with neuraxial morphine use for cesarean deliveries. Institutions with less than 10 cases of cesarean delivery (956 sites; $n = 3886$) were excluded from the multilevel logistic regression analysis to stabilize the statistical model (1319 sites; $n = 61,322$). The area under the receiver-operating-characteristic curve of the model is 0.69. *CI* confidence interval, *CSEA* combined spinal–epidural anesthesia, *OR* odds ratio.

neuraxial morphine in Japan. Our data demonstrated that, during the whole study period, neuraxial morphine was used in 16.0% of cesarean deliveries; the usage rate of neuraxial morphine, especially intrathecal morphine, gradually increased, and its administration has become the standard practice. These trends were consistent with those obtained from the United States (US) and Europe, but the rate of neuraxial opioid use in Japan was comparatively lower than those of the US (71.4% in 2008 and 83.4% in 2018¹¹) and European countries (71% in Austria¹²). Our results demonstrated that recent surgeries (especially 2015–2020) were strongly associated with the utilization of neuraxial morphine. The trend in neuraxial morphine use is important in establishing benchmarks for comparison between international practices and current obstetric anesthesia practices in Japan¹³ and could provide invaluable information to help clinicians and patients in shared decision-making for post-cesarean delivery analgesia¹⁴.

Among the ERAC components, the use of postoperative multimodal analgesia is important to avoid inappropriate opioid use and improve maternal satisfaction. Our data demonstrated that the usage of NSAIDs plus acetaminophen and NSAIDs plus acetaminophen–opioid combination were 31.5% and 0.4%, respectively. In a cohort study conducted in the US, the usage of NSAIDs plus acetaminophen and NSAIDs plus acetaminophen–opioid combination were reported as 8.1% and 76.7%, respectively¹¹. In the previous study, 81.3% of cesarean delivery cases received acetaminophen–opioid combination drugs and only 28.4% received acetaminophen¹¹. Recent studies have shown that 89% of women undergoing cesarean deliveries use some form of opioid for postoperative pain, which has become a social problem, especially in the US¹⁵. Compared to the US cohort, our cohort was seldom prescribed acetaminophen/tramadol combinations (the only available acetaminophen–opioid combination in Japan) and tramadol (<1%). Additionally, hydrocodone, hydromorphone, methadone, oxycodone, oxycodone, and tapentadol were not prescribed in our cohort. This is consistent with the result of a recent survey in Japan; the usage of opioids for postoperative analgesia was reported to be substantially lower in Japan than in Western countries because of culture and strict government regulations¹⁶. Therefore, postoperative opioids are rarely administered in Japan. These results are highly contrasting and indicate a completely different opioid prescribing pattern compared to those in Western countries^{15,17}.

The group that did not receive neuraxial morphine was more likely to receive continuous epidural analgesia, opioids (buprenorphine and pentazocine), and ketamine compared with the group that received neuraxial morphine. The group that did not receive neuraxial morphine may need long-acting analgesia, such as continuous epidural analgesia, and supplemental analgesia, such as buprenorphine, pentazocine, or ketamine, for post-cesarean delivery analgesia. Conversely, as the neuraxial morphine group used NSAIDs plus acetaminophen more frequently (36.2% [with neuraxial morphine] vs. 30.6% [without neuraxial morphine]), these results reflect the current trend in the concept of multimodal analgesia. In the US, ketorolac, diclofenac, and ibuprofen are typical NSAIDs¹¹, but their use is infrequent in Japan. Instead, the essential components of multimodal post-cesarean delivery analgesia include diclofenac and loxoprofen, which are widely used during the postpartum period. As our data do not clearly distinguish between scheduling administration of NSAIDs and acetaminophen, the combined administration of NSAIDs and acetaminophen was used in only 31.5% of our cohort. A previous study in the US showed that 76.7% of patients received NSAIDs and acetaminophen–opioid combination drugs¹¹. Given that the prevalence of multimodal analgesia use in Japan is very low compared to that in the US and that there is a variation in the utilization of postoperative analgesia among women undergoing cesarean deliveries, standardization of postoperative pain management after cesarean delivery is warranted to improve the quality of care and patient satisfaction.

Our results showed that neuraxial morphine use was strongly associated with facility-level characteristics, such as facility size and academic hospital status. We also showed that patient-level factors, such as age and maternal comorbidities, could not predict the use of neuraxial morphine. However, the influence of non-medical factors (fiscal year, facility size, and academic hospital status) persisted, even after adjustment, suggesting that non-medical factors are important predictors of neuraxial morphine use. The exact mechanism of this increasing trend in neuraxial morphine use cannot be explained by our data; however, in recent years, the development of subspecialty education in the field of obstetric anesthesia in large medical facilities, especially academic hospitals, may play an important role in raising awareness of the superior analgesic quality.

The strength of our study is that it is the largest nationwide study to include diverse facilities and reflects the current real-world practice to date in Japan. The JMDC database is limited to the employee-based health insured population; however, Japan has a universal health coverage system and free access to medical facilities. Hence, different types of health insurance or socioeconomic disparities would not influence our results. Thus, our results can be generalized to the majority of pregnant women undergoing cesarean deliveries in Japan¹⁸. Additionally, our large sample size and low rate of missing cases (1.9% [1460/77640]) can precisely estimate the patient- and facility-specific factors associated with neuraxial morphine use in clinical practice.

This study has several limitations. First, the claims-based database does not include potential confounding covariates, such as individual anesthesia/obstetric providers who are in charge of post-cesarean delivery analgesia. These confounding factors could not be accounted for in our analysis. To account for the institutional variation and clustering among institutions, we used multilevel logistic regression analysis¹⁹. Second, our definition of neuraxial morphine can be influenced by misclassifications, which could lead to a potential misclassification bias. To reduce misclassification bias, we defined neuraxial morphine as a morphine dose in vials of ≤ 10 mg based on a previous study¹¹ because a higher morphine dose (> 10 mg) may indicate possible contamination due to intravenous administration of postoperative patient-controlled analgesia. However, as this practice is uncommon in Japan, our large sample size can mitigate this influence on our outcomes. Third, no studies to date have validated administrative claims records for the obstetric surgical population. The determination of comorbidity statuses, procedures, and medication used in the study depended on the accuracy of administrative claims records. The records of the diagnoses and procedures in the Japanese administrative data were validated with relatively moderate sensitivity, high specificity, and high positive predictive values (PPV)^{20,21}. By limiting

the study population to patients with less common diseases (e.g., the obstetric population), the PPV would be lower, and thus it remains unclear whether the results of the validation study can be extrapolated to our population. Regarding medication claims, the medication records are linked to the payment system for reimbursement of drugs. Additionally, morphine is a narcotic and requires a separate prescription in Japan, and thus opioid medications are strictly recorded and reimbursed. Therefore, it is clinically reasonable to infer a low possibility of coding errors or incomplete medication claims records. As data quality and accuracy are critical factors for real-world data analysis, a future study is required to investigate the validity of claims-based medication use. Considering the scarcity of evidence regarding current trends of post-cesarean delivery analgesia, the results of this study can provide the best available real-world evidence to date.

Another limitation is the time span of our dataset. As the data were collected between 2005 and 2020, the trend in analgesic use or available drugs has changed; therefore, it is uncertain to what degree the rates of post-operative analgesia use have changed since 2005. However, given the surprising lack of national and international data on the rates of neuraxial morphine use for cesarean deliveries, our data are important for setting local benchmarks and treatment goals. In addition, our findings may guide future studies to further delineate practice patterns by facility and potentially improve the quality of care for cesarean deliveries and promote patient recovery after childbirth. Finally, the perinatal care system and obstetric anesthesia practices in Japan are completely different from those of Western countries. A previous government survey found that 31% of cesarean deliveries were performed in small facilities (< 20 beds)⁵. Compared to other Western countries, the Japanese health care system has an insufficient functional differentiation between hospitals and clinics^{18,22}.

In conclusion, our data could be useful for identifying the current trend in neuraxial morphine administration and the variation in postoperative analgesia practice in Japan for over 15 years. Moreover, our data provide valuable information for the standardization of post-cesarean delivery analgesia practice, as we compared national and global data.

Methods

This study was approved by the Institutional Review Board of Fujita Health University and Mie University (HM21-369 and H2019-167, respectively), which waived the requirement for obtaining additional informed consent from the participants owing to the anonymous nature of the data. This study was conducted in accordance with the Declaration of Helsinki and followed the Strengthening the Reporting of Observational Studies in Epidemiology (STROBE) statement²³.

Data source. We used the nationwide health insurance claims database obtained from the medical database vendor JMDC Co., Ltd (Tokyo, Japan)²⁴. This database collects anonymized inpatient, outpatient, and dispensing claims data from various health insurance associations and has accumulated over 10 million people since 2005 (approximately 10% of the Japanese population)²⁵. As this database is sourced from health insurance associations for company employees and their families, it is representative of the relatively young generation, which is advantageous for maternal health care research^{26,27}. This database included data on patient demographics, inpatient and outpatient claims (diagnosis, procedure codes, and medication information), and facility characteristics. Clinical diagnoses were coded according to the International Classification of Diseases 10th revision (ICD-10), and the procedure code was defined using the Japanese standardized procedure codes (K codes). The medications administered were date-stamped using the World Health Organization Anatomical Therapeutic Chemical (WHO-ATC) classification system. Details of the JMDC database and included variables have been described in previous studies^{13,18,24}. The distribution of demographics (age and sex) and claims code provided by each chapter of ICD-10 in the JMDC database are almost consistent with the governmental statistics, which were aggregates of the national database for the total population of Japan health insurance claims and specific health checkups²⁸. The records of the diagnoses and procedures in the Japanese administrative data were validated with relatively moderate sensitivity and high specificity^{20,21}. Previous studies using the JMDC database reported the validity of diagnostic and medication code-based algorithms for common chronic conditions such as hypertension and diabetes. The sensitivity and specificity of claims-based algorithms for common chronic conditions were > 75% and > 90%, respectively²¹. Data from the JMDC database have been used in multiple pharmacoepidemiological studies that have been published in peer-reviewed journals^{27,29,30}.

Study cohort. We included pregnant women who underwent elective or emergency cesarean deliveries identified by the Japanese procedure K codes (K898-1, K898-2, and K898-3)³¹, which were performed under neuraxial anesthesia between January 1, 2005, and March 31, 2020. We used a combination of Japanese L codes (anesthesia-related codes) and WHO-ATC drug claims to categorize neuraxial anesthesia as spinal anesthesia, CSEA, or epidural anesthesia (Supplementary Table S5). Cases with unclear information about the type of anesthesia or those receiving general anesthesia were excluded.

Patient- and facility-level variables. The patient characteristics examined included age, MCI, and CCI. We used the MCI developed by Bateman et al.³² and the modified CCI by Quan et al.³³ using the ICD-10 code algorithm to ascertain the burden of systemic comorbidities. The MCI is a validated comorbidity score in obstetric populations designed to assess maternal comorbidity^{34,35}; the MCI scores were calculated based on 20 primary diseases and maternal age > 35 years. The CCI is also a validated comorbidity score index. Higher MCI and CCI scores indicate a high burden of systemic disease. We categorized the MCI score as 0, 1–2, or > 2, and the CCI score as < 2 and > 2 based on previous studies³⁶. The medical facility size was categorized in the JMDC database as follows: 0–19, 20–99, 100–199, 200–299, 300–499, or ≥ 500 beds. Hospital characteristics were simplified

into the following two categories: academic hospitals (university hospitals and public hospitals with advanced functions) and non-academic hospitals¹⁸. We categorized hospital sizes as < 500 or ≥ 500 beds.

Outcomes. The primary outcome was the proportion of patients who received neuraxial morphine for cesarean delivery. The secondary outcome was the analgesic drugs administered during hospitalization after cesarean delivery (Supplementary Table S5). The administration routes (neuraxial, intravenous, oral, etc.) and concentration of each analgesic were determined based on the text information of their Japanese brand name drugs. In general, neuraxial morphine is used within a dose of ≤ 10 mg; thus, we defined “neuraxial morphine” as a combination of neuraxial anesthesia code and morphine drug information (ATC code: N02AA01) in vials with a dose of ≤ 10 mg¹¹. In the sensitivity analysis for testing the robustness of our results, we limited the neuraxial morphine to intrathecal morphine in spinal anesthesia cases (also known as “single-shot spinal” anesthesia) to exclude the combined use of epidural anesthesia. We described the utilization of antiemetics and opioid reversal agents as a proxy for the side effects of nausea/vomiting and respiratory depression due to morphine, respectively.

Statistical analysis. We calculated the proportions of neuraxial morphine use in the overall cohort and patient groups stratified by the type of cesarean delivery (overall, elective, or emergency) and the type of anesthesia (spinal, CSEA, or epidural). Background characteristics and intra/postoperative analgesia management were assessed in anesthesia cases with and without neuraxial morphine. Continuous variables are presented as the mean (SD) or median (interquartile range [IQR]), and categorical variables as the number (proportion). In general, the larger the sample size, the smaller the P value obtained from the baseline comparison. Therefore, we calculated the standardized mean differences (SMDs) in addition to P values when comparing cases receiving neuraxial anesthesia with and without neuraxial morphine; an absolute SMD > 0.1 indicates a meaningful imbalance between group differences³⁷. Differences between groups were tested using the Pearson χ^2 test (Fisher’s exact test) and Student’s *t* test (Mann–Whitney *U* test) for categorical and continuous variables, respectively, as appropriate. To describe the trend in neuraxial morphine use, the rate of women who received neuraxial morphine was calculated each year over the 15-year study period. The trend in proportions was assessed using the Cochran–Armitage trend test³⁸. To account for the variation of institutional practice and clustering among institutions, we performed a multilevel logistic regression analysis¹⁹. The GLIMMIX procedure in SAS 9.4 (SAS Institute Inc., Cary, NC, USA) was used. Institutions with < 10 cesarean deliveries were excluded from the regression analysis to stabilize the statistical model. We included the institution as a random effect and the following covariates as fixed effects: maternal age category, MCI category, CCI category, type of anesthesia, type of surgery, year of surgery, facility size category, and academic hospital status. The adjusted odds ratios and 95% CI for fixed effects were reported along with the P values. The model was validated internally using fivefold cross-validation. In the sensitivity analysis, we only analyzed spinal anesthesia cases receiving neuraxial morphine and performed descriptive analyses and multilevel logistic regression analyses. All analyses were performed using SAS 9.4, and a two-sided α level of 0.05 was considered statistically significant.

Data availability

The datasets analyzed in this study are available from the corresponding author upon reasonable request.

Received: 1 July 2022; Accepted: 11 October 2022

Published online: 14 October 2022

References

- Boerma, T. *et al.* Global epidemiology of use of and disparities in caesarean sections. *Lancet* **392**, 1341–1348 (2018).
- Maeda, E. *et al.* Cesarean delivery rates for overall and multiple pregnancies in Japan: A descriptive study using nationwide health insurance claims data. *J. Obstet. Gynaecol. Res.* **47**, 2099–2109 (2021).
- Maeda, E. *et al.* Cesarean section rates and local resources for perinatal care in Japan: A nationwide ecological study using the national database of health insurance claims. *J. Obstet. Gynaecol. Res.* **44**, 208–216 (2018).
- Hasegawa, J. *et al.* Decline in maternal death due to obstetric haemorrhage between 2010 and 2017 in Japan. *Sci. Rep.* **9**, 11026 (2019).
- Ministry of Health, Labour and Welfare. *Survey of medical institutions*. <https://www.mhlw.go.jp/toukei/saikin/hw/iryosd/20/dl/02sisetu02.pdf> (2020).
- Hasegawa, J. *et al.* Current status of pregnancy-related maternal mortality in Japan: A report from the Maternal Death Exploratory Committee in Japan. *BMJ Open* **6**, e010304 (2016).
- Bollag, L. *et al.* Society for obstetric anesthesia and perinatology: Consensus statement and recommendations for enhanced recovery after cesarean. *Anesth. Analg.* **132**, 1362–1377 (2021).
- Lim, G. *et al.* A review of the impact of obstetric anesthesia on maternal and neonatal outcomes. *Anesthesiology* **129**, 192–215 (2018).
- Practice Guidelines for Obstetric Anesthesia. An Updated Report by the American Society of Anesthesiologists Task Force on Obstetric Anesthesia and the Society for Obstetric Anesthesia and Perinatology. *Anesthesiology* **124**, 270–300 (2016).
- Bauchat, J. R. *et al.* Society for Obstetric Anesthesia and Perinatology Consensus Statement: Monitoring recommendations for prevention and detection of respiratory depression associated with administration of neuraxial morphine for cesarean delivery analgesia. *Anesth. Analg.* **129**, 458–474 (2019).
- Reed, S. E. *et al.* Analgesia after cesarean delivery in the United States 2008–2018: A retrospective cohort study. *Anesth. Analg.* **133**, 1550–1558 (2021).
- Oji-Zurmeyer, J. *et al.* National survey of obstetric anaesthesia clinical practices in the republic of Austria. *Int. J. Obstet. Anesth.* **39**, 95–98 (2019).
- Yonekura, H., Mazda, Y., Noguchi, S., Tsunobuchi, H. & Shimaoka, M. Current epidemiology of the general anesthesia practice for cesarean delivery using a nationwide claims database in Japan: A descriptive study. *J. Clin. Med.* **11**, 4808 (2022).

14. Carvalho, B., Sutton, C. D., Kowalczyk, J. J. & Flood, P. D. Impact of patient choice for different postcesarean delivery analgesic protocols on opioid consumption: A randomized prospective clinical trial. *Reg. Anesth. Pain Med.* **44**, 578–585 (2019).
15. Omsundson, S. S. *et al.* Delivery type, opioid prescribing, and the risk of persistent opioid use after delivery. *Am. J. Obstet. Gynecol.* **220**, 405–407 (2019).
16. Tannoury, C., Kleweno, C., Kamath, A. F. & Gary, J. Comparison of opioid use and prescribing patterns in orthopedic surgery in Japan and the United States: A JOA-AOA Traveling Fellowship Investigation. *J. Orthop. Sci.* **25**, 520–524 (2020).
17. Thomsen, B. S. V. *et al.* Incidence of persistent postpartum opioid use by mode of delivery: A 2016 cohort study of Danish women. *Int. J. Obstet. Anesth.* **50**, 103254 (2022).
18. Yonekura, H. *et al.* Preoperative blood tests conducted before low-risk surgery in Japan: A retrospective observational study using a nationwide insurance claims database. *Anesth. Analg.* **126**, 1633–1640 (2018).
19. Merlo, J. *et al.* A brief conceptual tutorial of multilevel analysis in social epidemiology: Using measures of clustering in multilevel logistic regression to investigate contextual phenomena. *J. Epidemiol. Community Health* **60**, 290–297 (2006).
20. Yamana, H. *et al.* Validity of diagnoses, procedures, and laboratory data in Japanese administrative data. *J. Epidemiol.* **27**, 476–482 (2017).
21. Hara, K. *et al.* Association measures of claims-based algorithms for common chronic conditions were assessed using regularly collected data in Japan. *J. Clin. Epidemiol.* **99**, 84–95 (2018).
22. Hashimoto, H. *et al.* Cost containment and quality of care in Japan: Is there a trade-off?. *Lancet* **378**, 1174–1182 (2011).
23. Vandembroucke, J. P. *et al.* Strengthening the Reporting of Observational Studies in Epidemiology (STROBE): Explanation and elaboration. *Epidemiology* **18**, 805–835 (2007).
24. Kimura, S., Sato, T., Ikeda, S., Noda, M. & Nakayama, T. Development of a database of health insurance claims: Standardization of disease classifications and anonymous record linkage. *J. Epidemiol.* **20**, 413–419 (2010).
25. Laurent, T. *et al.* Context and considerations for use of two Japanese real-world databases in Japan: Medical data vision and Japanese medical data center. *Drugs Real World Outcomes* **9**, 175–187 (2022).
26. Nakashima, M., Takeuchi, M. & Kawakami, K. Clinical outcomes of acute appendicitis during pregnancy: Conservative management and appendectomy. *World J. Surg.* **45**, 1717–1724 (2021).
27. Yamamoto-Sasaki, M., Yoshida, S., Takeuchi, M., Tanaka-Mizuno, S. & Kawakami, K. Association between antidepressant use during pregnancy and congenital anomalies in children: A retrospective cohort study based on Japanese claims data. *Congenit. Anom. (Kyoto)* **60**, 180–188 (2020).
28. Nagai, K. *et al.* Data resource profile: JMDC claims database sourced from health insurance societies. *J. Gen. Fam. Med.* **22**, 118–127 (2021).
29. Shigemi, D., Hashimoto, Y., Michihata, N. & Yasunaga, H. Effect of Japanese herbal Kampo medicines on live birth rate in women with recurrent pregnancy loss. *Int. J. Gynaecol. Obstet.* **153**, 489–495 (2021).
30. Hashimoto, Y. *et al.* Intraocular pressure-lowering medications during pregnancy and risk of neonatal adverse outcomes: A propensity score analysis using a large database. *Br. J. Ophthalmol.* **105**, 1390–1394 (2021).
31. Abe, H. *et al.* Association between mode of anaesthesia and severe maternal morbidity during admission for scheduled Caesarean delivery: A nationwide population-based study in Japan, 2010–2013. *Br. J. Anaesth.* **120**, 779–789 (2018).
32. Bateman, B. T. *et al.* Development of a comorbidity index for use in obstetric patients. *Obstet. Gynecol.* **122**, 957–965 (2013).
33. Quan, H. *et al.* Coding algorithms for defining comorbidities in ICD-9-CM and ICD-10 administrative data. *Med. Care* **43**, 1130–1139 (2005).
34. Aoyama, K., D'Souza, R., Inada, E., Lapinsky, S. E. & Fowler, R. A. Measurement properties of comorbidity indices in maternal health research: A systematic review. *BMC Pregnancy Childbirth* **17**, 372 (2017).
35. Metcalfe, A. *et al.* Validation of an obstetric comorbidity index in an external population. *BJOG* **122**, 1748–1755 (2015).
36. Guglielminotti, J., Landau, R. & Li, G. Adverse events and factors associated with potentially avoidable use of general anesthesia in cesarean deliveries. *Anesthesiology* **130**, 912–922 (2019).
37. Austin, P. C. Using the standardized difference to compare the prevalence of a binary variable between two groups in observational research. *Commun. Stat. Simul. Comput.* **38**, 1228–1234 (2009).
38. Guglielminotti, J., Wong, C. A., Landau, R. & Li, G. Temporal trends in anesthesia-related adverse events in Cesarean deliveries, New York State, 2003–2012. *Anesthesiology* **123**, 1013–1023 (2015).

Acknowledgements

We thank the staff of JMDC Co., Ltd., Tokyo, Japan, for assistance with data preparation. We also thank Editage (<http://www.editage.jp>) for English language editing.

Author contributions

H.Y., principal investigator: research idea, study design, data interpretation, and manuscript drafting. Y.M. and S.N.: study design, data interpretation, and manuscript drafting. H.T. and M.S.: result interpretation, manuscript drafting, manuscript revision, and supervision. All authors have read and approved the final manuscript.

Competing interests

The authors declare no competing interests.

Additional information

Supplementary Information The online version contains supplementary material available at <https://doi.org/10.1038/s41598-022-22165-5>.

Correspondence and requests for materials should be addressed to H.Y.

Reprints and permissions information is available at www.nature.com/reprints.

Publisher's note Springer Nature remains neutral with regard to jurisdictional claims in published maps and institutional affiliations.



Open Access This article is licensed under a Creative Commons Attribution 4.0 International License, which permits use, sharing, adaptation, distribution and reproduction in any medium or format, as long as you give appropriate credit to the original author(s) and the source, provide a link to the Creative Commons licence, and indicate if changes were made. The images or other third party material in this article are included in the article's Creative Commons licence, unless indicated otherwise in a credit line to the material. If material is not included in the article's Creative Commons licence and your intended use is not permitted by statutory regulation or exceeds the permitted use, you will need to obtain permission directly from the copyright holder. To view a copy of this licence, visit <http://creativecommons.org/licenses/by/4.0/>.

© The Author(s) 2022