

# Morphometric study of third-instar larvae from five morphotypes of the *Anastrepha fraterculus* cryptic species complex (Diptera, Tephritidae)

Nelson A. Canal<sup>1</sup>, Vicente Hernández-Ortiz<sup>2</sup>,  
Juan O. Tigrero Salas<sup>3</sup>, Denise Selivon<sup>4</sup>

**1** Universidad del Tolima, Barrio Altos de Santa Helena, Ibagué, Tolima, Colombia, CP 73000629 **2** Instituto de Ecología A.C., Red de Interacciones Multitróficas. Carretera antigua a Coatepec # 351, El Haya. Xalapa, Veracruz 91070, México **3** Universidad de las Fuerzas Armadas, Departamento Ciencias de la Vida, Carrera de Ciencias Agropecuarias (IASA I), Laboratorio de Entomología, PO Box 171-5-231-B, Sangolquí, Ecuador **4** Departamento de Biología, Instituto de Biociências, Universidade de São Paulo, 05508-900 São Paulo, São Paulo, Brazil

Corresponding author: Nelson A. Canal ([nacanal@ut.edu.co](mailto:nacanal@ut.edu.co))

---

Academic editor: M. T. Vera | Received 11 April 2015 | Accepted 22 September 2015 | Published 26 November 2015

---

<http://zoobank.org/DCDA83EA-45DF-458E-91E5-6EB22AA1EFAB>

---

**Citation:** Canal NA, Hernández-Ortiz V, Tigrero Salas JO, Selivon D (2015) Morphometric study of third-instar larvae from five morphotypes of the *Anastrepha fraterculus* cryptic species complex (Diptera, Tephritidae). In: De Meyer M, Clarke AR, Vera MT, Hendrichs J (Eds) Resolution of Cryptic Species Complexes of Tephritid Pests to Enhance SIT Application and Facilitate International Trade. ZooKeys 540: 41–59. doi: 10.3897/zookeys.540.6012

---

## Abstract

The occurrence of cryptic species among economically important fruit flies strongly affects the development of management tactics for these pests. Tools for studying cryptic species not only facilitate evolutionary and systematic studies, but they also provide support for fruit fly management and quarantine activities. Previous studies have shown that the South American fruit fly, *Anastrepha fraterculus*, is a complex of cryptic species, but few studies have been performed on the morphology of its immature stages. An analysis of mandible shape and linear morphometric variability was applied to third-instar larvae of five morphotypes of the *A. fraterculus* complex: Mexican, Andean, Ecuadorian, Peruvian and Brazilian-1. Outline geometric morphometry was used to study the mouth hook shape and linear morphometry analysis was performed using 24 linear measurements of the body, cephalopharyngeal skeleton, mouth hook and hypopharyngeal sclerite. Different morphotypes were grouped accurately using canonical discriminant analyses of both the geometric and linear morphometry. The shape of the mandible differed among the morphotypes, and the anterior spiracle length, number of tubules of the anterior spiracle, length and height of the mouth hook and length of the cephalopharyngeal skeleton were the most significant variables in the linear morphometric analysis. Third-instar larvae provide useful characters for studies of cryptic species in the *A. fraterculus* complex.

## Keywords

South American fruit fly, immature, taxonomy, geometric morphometry, linear morphometry, morphotypes

## Introduction

Some species within the Tephritidae family are among the most important pests for agriculture because of their direct effects on fruit production and the quarantine restrictions imposed to prevent the transfer of foreign species from one region to another (Schutze et al. 2012, Norrbom et al. 2013). In this family, there are species of agricultural importance that are, in reality, complexes of cryptic species (Kitthawee and Dujardin 2010, Hernández-Ortiz et al. 2012, Ruiz-Arce et al. 2012, Schutze et al. 2012, Krosch et al. 2013, Vaníčková et al. 2014). The occurrence of cryptic species among economically important fruit flies strongly affects the development of management tactics for these pests. Their economic importance is variable from one region to another, which makes the establishment of management practices more difficult. Detailed knowledge of the biology and taxonomy of these species is essential for the application of methods such as the sterile insect technique (SIT), the use of pheromones, the determination of pest-free or low-prevalence areas and quarantine measures or risk analysis (Frías et al. 2006, Schutze et al. 2012, Krosch et al. 2013, Norrbom et al. 2013, Perre et al. 2014).

The definition and determination of species is one of the most important topics in modern systematics. Traditionally, the description of species has been based on the study of morphological characteristics. In recent decades, other biological, ecological, genetic and evolutionary tools have been integrated with morphology to find new species, particularly within cryptic species complexes (Baylac et al. 2003, Bickford et al. 2007, Wiens 2007, de Queiroz 2007, Yeates et al. 2011, Krosch et al. 2013). Tools for studying cryptic species not only facilitate evolutionary and systematic studies, but they also provide support for fruit fly management and quarantine activities.

The South American fruit fly, *Anastrepha fraterculus* (Wiedemann), is a species of great economic importance within the genus and is subject to quarantine restrictions. It is widely distributed in America and is associated with a large number of host fruits (Hernández-Ortiz et al. 2012, Norrbom et al. 2013). In fact, this nominal species comprises a cryptic species complex, as has been demonstrated by genetic (Steck 1991, Steck and Sheppard 1993, Smith-Caldas et al. 2001) and cytogenetic (Selivon et al. 2004, 2005, Goday et al. 2006) studies, reproductive isolation tests (Selivon et al. 1999, Vera et al. 2006, Cáceres et al. 2009, Devescovi et al. 2014), chemo-taxonomy (Cáceres et al. 2009, Břízová et al. 2013, Vaníčková et al. 2015) and morphological (Selivon and Perondini 1998, Selivon et al. 2005, Hernández-Ortiz et al. 2004, 2012) analysis. Based on adult morphology, Hernández-Ortiz et al. (2012) identified seven morphotypes within this complex: Mexican, Andean, Venezuelan, Peruvian, and three morphotypes from the Brazilian territory, one of which extends to Argentina. In addition to these, Hernández-Ortiz et al. (2015) recently identified the Ecuadorian morphotype.

Studies of the immature stages may be informative for the definition of species limits as well as for studies of phylogeny and evolution (Norrbon et al. 1999, Dujardin et al. 2014). In addition, in the case of fruit flies these studies could be important for quarantine actions because this is the stage that damages fruits (Steck et al. 1990, Frías et al. 2008, Dutra et al. 2012) and the one that is mostly intercepted during trade. According to Frías et al. (2008), larvae of only 7% of Tephritidae species have been described in 17% of the genera. Studies on the larval morphology of *Anastrepha* have been performed by Steck and Malavasi (1988), Steck and Wharton (1988), Carroll and Wharton (1989), Steck et al. (1990), Frías et al. (2006, 2008, 2009) and Dutra et al. (2012). However, previous studies have barely covered the morphological descriptions of the studied species, except that of Steck et al. (1990), who used multivariate analysis to find traits which could separate 13 species. Frías et al. (2006, 2008) also studied larval differentiation among the genera *Anastrepha*, *Ceratitis*, *Bactrocera*, *Rhagoletis* and *Toxotrypana*; further, they differentiated the larvae of some species of *Rhagoletis* that occur in Chile. In larvae of fruit flies, only allometric studies have been performed. These studies have shown that several structures, such as the cephalopharyngeal skeleton and the mouth hook may have taxonomical importance for the group. However, the results have not been completely satisfactory.

The study of larvae would benefit from more sophisticated tools for measuring the extant morphologic variability, as could be the case of shape analysis of certain structures, since forms are among the features that show differences in the speciation processes (Jirakanjanakit et al. 2008, Schutze et al. 2012, Dujardin et al. 2014). Shape analysis through the study of outlines has been successfully applied to delimit cryptic species of mosquitoes and ticks (Dujardin et al. 2014) and to study the effect of hybridization in mandibles of stag beetles (Tatsuta et al. 2011). However, in spite of its capacity to detect minimal morphological variation, measurement errors can be introduced in geometric morphometric studies due to observer error, common in many works, photographing and collecting landmarks (Dujardin et al. 2010, Toro et al. 2010). Several solutions to this have been proposed (Arnqvist and Martensson 1998) with modern techniques of digital photography providing an adequate resolution for these liabilities (Dujardin et al. 2010).

The aim of this study was to perform a comparative analysis of third instar larvae of representatives of five morphotypes of the *A. fraterculus* complex (Mexican, Andean, Peruvian, Brazilian-1 and Ecuadorian). Through the use of geometric morphometry of the shape of the mouth hook and linear morphometry of larvae, we tested several variables and determined their usefulness in the differentiation of these morphotypes.

## Methods

*Biological material.* The taxonomic identity of all larvae used in this study was fully known from associated reared adults and the diagnoses developed by Hernández-Ortiz et al. (2004, 2012, 2015) (Table 1). The samples from Mexico and Ecuador derived

**Table 1.** Data on collection of third-instar larvae of five morphotypes of the *Anastrepha fraterculus* complex.

Morphotype	Country	State	Municipality	Host	Latitude	Longitude	Altitude
Andean	Colombia	Boyaca	Duitama	Guava feijoa ( <i>Acca sellowiana</i> )	5°49'29,9"N	73°04'29,7"W	2569
Brazil sp1	Brazil	São Paulo	Itaquera	Guava ( <i>Psidium guajaba</i> )	23°30'S	46°40'W	700
Ecuadorian	Ecuador	Pichincha	Quito	Custard apple ( <i>Annona cherimola</i> )	00°06'47"S	78°25'33"W	1861
Mexican	Mexico	Veracruz	Teocelo	Guava	19°23'8"N	96°58'20"W	1190
Peruvian	Peru	Lima	La Molina	Custard apple	12°00'03"S	76°57'00"W	255

from natural populations. The samples from Colombia and Brazil came from colonies reared for a few generations on host fruit in laboratory conditions. The sample from Peru came from a laboratory colony maintained on an artificial diet since 2002 at the laboratories of the International Atomic Energy Agency, in Seibersdorf, Austria. The sample of the Brazilian-1 morphotype was collected in the field and identified by one of the co-authors (DS) in the same location at which previous genetic, cytogenetic and morphometric studies were conducted with adults of this morphotype (Yamada and Selivon 2001). For each population we studied a total of 20 individuals.

*Preparation of larvae.* Larvae were prepared following methods described by Frías et al. (2006) as follows: third-instar larvae were killed in boiling water for one minute in groups of up to 20 individuals and then put in a 75% alcohol solution for storage. Larvae specimens were photographed in dorsal view before proceeding with their preparation. Next, the larvae were left for one night in a 10% KOH solution, and the internal body content was withdrawn. Later, the cephalopharyngeal skeleton was carefully separated, removing the adhering tissue as much as possible. This structure was positioned in lateral view on a concave glass slide, slightly immersed in glycerin, covered and photographed. Digital images were also taken of the anterior spiracles by placing the cuticle on a glass slide with glycerin. The larval cuticle and the cephalopharyngeal skeleton were stored in Eppendorf tubes with glycerin and deposited in the Museum of the Laboratory of Entomology at the University of Tolima.

The left mouth hook was carefully separated, and the remaining tissue was removed as much as possible. Permanent slides were made with Canada balsam, putting the mandible in lateral view, and were deposited in the Museum of the Laboratory of Entomology at the University of Tolima. The mounting were done placing small amounts of Canada balsam each time to keep the mouth hooks in the best position to minimize the error.

*Image capture.* All pictures were taken with a Moticam10 digital camera, coupled to an Advance Optical stereoscopic microscope for digital images of the body, and a Carl Zeiss Primo Star Trinocular microscope was used for pictures of the mouthparts. In both cases, the camera had a 10X lens. The cephalopharyngeal skeleton and the anterior spiracle were photographed with a 10X objective, and the

hypopharyngeal sclerite and mouth hook were photographed with a 40X objective. All digital images were taken at high resolution (3,664 × 2,748 pixels). The mouth hook at 400× magnification resulted in a 3D figure with blurred edges; therefore, multiple shots (between six and 10) were taken at different focal planes and later assembled with the software Helicon Focus 6.0.18 (2013). All the images were edited with Adobe Photoshop CS5 Extended 12.0 x64 (Adobe 2010). The third dimension can be ignored in geometric morphometry when it is not important compared to the other two, and if the imaged structure is in approximately the same position and of good quality (Zelditch et al. 2004, Dujardin et al. 2014). These methods minimized the variability of the data.

*Outline Geometric Morphometry.* The assessment of the shape variation of the mouth hook among the samples was performed using an elliptical Fourier analysis (EFA) (Tatsuta et al. 2011, Dujardin et al. 2014), for which points were marked on the image, making a complete outline description. Several modules of the CLIC software, version 84 (Dujardin 2013) were used in the analyses. The COO module was used for collecting the outlines, TET for concatenating the files, FOG for analysis and validation of classifications, and PAD to estimate the repeatability of the size and shape. Landmark captures were performed four times by a single observer (NA Canal) following Dujardin et al. (2010).

*Linear morphometry.* Samples were compared with a discriminant function analysis (DFA) applied over either linear measures between two points or the ratio between them. Measurements suggested by Steck and Wharton (1989), Steck et al. (1990) and Frías et al. (2006, 2008) were followed, and additional variables were included, which were deduced from the geometric morphometry study. We follow the terminology used by White et al. (1999) and Frías et al. (2008).

The mouth hook morphology was observed carefully. It shows a medial nub in the ventral curve, where the cuticle and muscles attaches, with a front and a rear notches next to it that extend to the top; a posterior apodema, like a neck, is also found. The anterior part of the dorsal apodema could be found where the slope turns greater (Figure 1).

All measurements were done on the digitized images of the structures. After variables were defined, measurements were performed three times by a single observer (NA Canal), but no differences in outcomes were found. Twenty-four variables were used, 15 of which corresponded to linear measurements, and nine to the ratios between various pairs (Figure 2).

### **Abbreviations of the variables used are as follows**

**BL:** body length; **BW:** body width at the sixth abdominal tergite; **CSL:** cephalopharyngeal skeleton length, from the anterior apex of the mandible to the end of the ventral cornua, at lower end of the dorsal cornua; **HSL:** hypopharyngeal sclerite length, from mouth hook joint to the rear distal point; and **HSH:** height of the hypopharyngeal

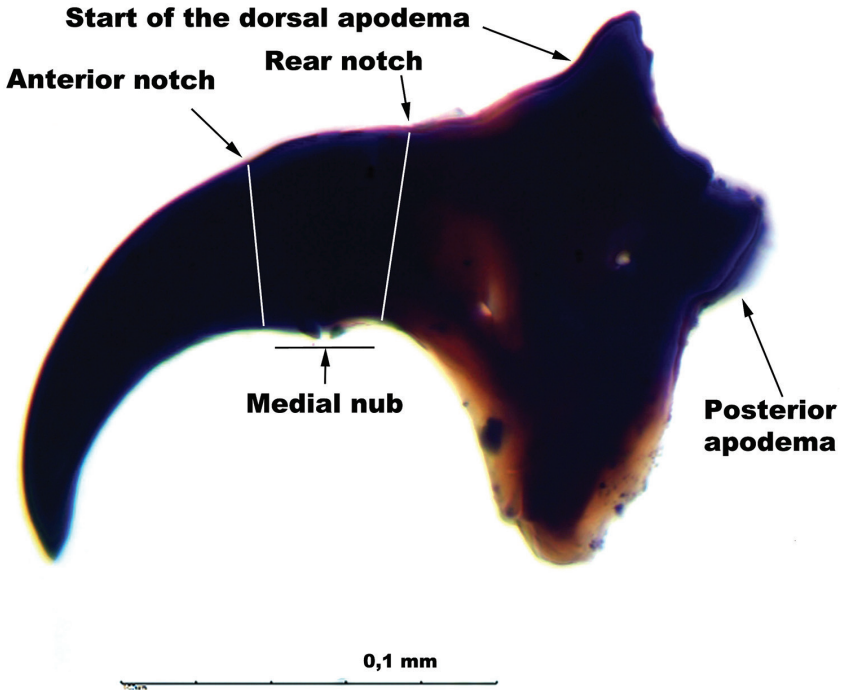


Figure 1. Lateral view of mouth hook of the third instar larvae of *Anastrepha fraterculus* complex.

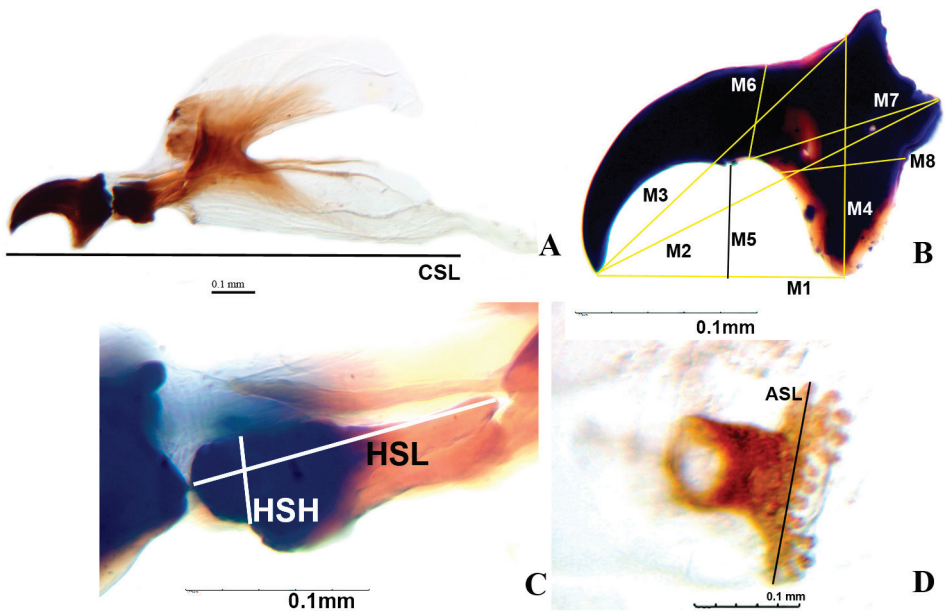


Figure 2. Linear variables measured in the third-instar larvae of the *Anastrepha fraterculus* complex. **A** cephalopharyngeal skeleton **B** mouth hook **C** hypopharyngeal sclerite **D** anterior spiracle. Variables are defined in the text.

sclerite at the anterior base of the hypopharyngeal bridge, perpendicular to the upper edge. The measurements of the mouth hook were **M1**: length from the apex to the ventral apodeme, **M2**: length from the apex to the dorsal most tip of neck, **M3**: length from the apex to the anterior base of the dorsal apodeme, **M4**: height from the apex of the ventral apodeme to the anterior base of the dorsal apodeme, **M5**: depth of ventral concavity from line M1 to tip of nub, **M6**: thickness of mouthhook at posterior base of nub by the posterior notch, **M7**: distance between the posterior base of nub and dorsal most tip of neck, and **M8**: width of the ventral apodeme at the base of the neck, in a line parallel to M1. **ASL**: width of the left anterior spiracle between the apices of the most extreme tubules, **AST**: number of tubules of the anterior spiracles, **X1**: BL/BW, **X2**: M1/M4, **X3**: M2/M4, **X4**: M1/M5, **X5**: M2/M5, **X6**: M3/M4, **X7**: CSL/HSL, **X8**: CSL/M3, and **X9**: CSL/M1.

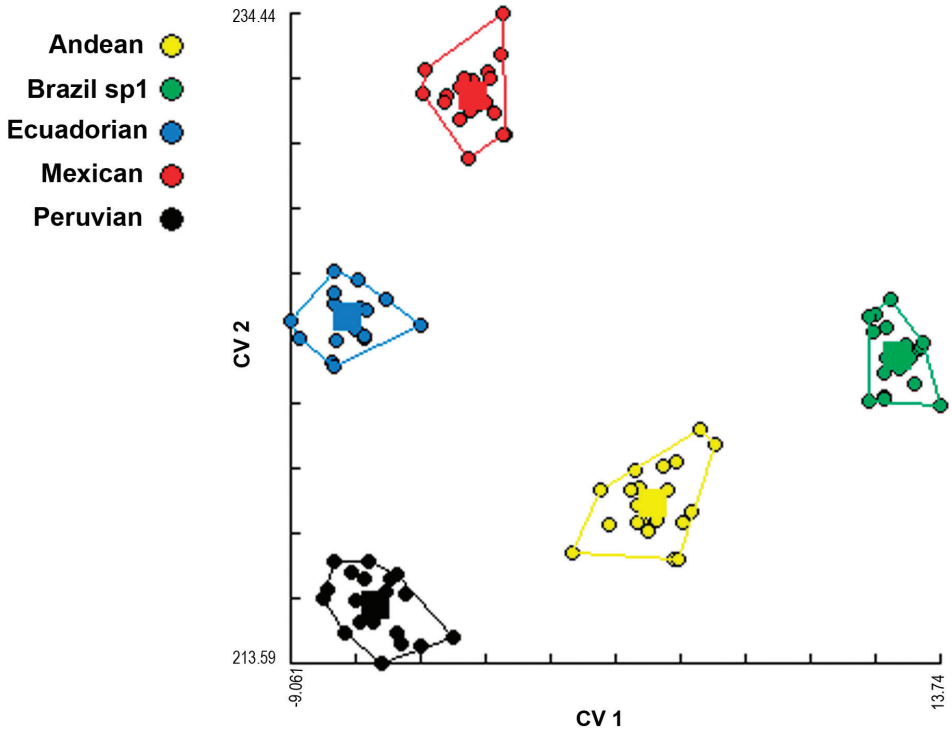
*Data analysis.* The shape of the mouth hook was studied with an outline analysis in a two-dimensional plane, for which an EFA (Tatsuta et al. 2011, Dujardin et al. 2014) was used. Briefly, the outline curve was decomposed into a series of ellipses based on their sine and cosine; each one was referred to as a harmonic, and each harmonic was represented by four coefficients (Fourier coefficients). Based on the coefficients of the first harmonic, the rest of the coefficients were standardized to be used in later analyses. EFAs require doing principal components analysis (PCA) on the standardized coefficients. Based on the first principal components obtained, a DFA was performed, and afterwards, each individual was reclassified through a Jackknife procedure.

For the linear morphometry, a multivariate analysis was performed. The mean and standard deviations were calculated, and normality and homogeneity of variance tests were run for each of the variables. To assess the probability of individuals being classified into the predicted groups defined by the morphotypes and the contribution of each of the variables for group discrimination, a DFA was performed on the complete dataset, with the forward stepwise method. A canonical analysis was done to determine the canonical variables and their significance through a Chi-squared test. All analyses were performed using Statistica 12 (StatSoft 2014).

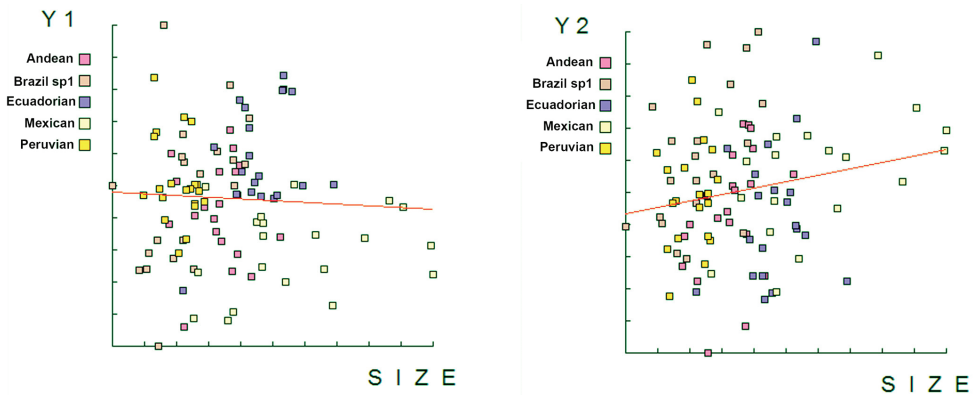
## Results

*Mouth hook shape.* The discriminant function analysis showed that all the samples studied differed in the shape of the mouth hook (Figure 3). The analysis of reclassification of the individuals correctly included 100% of the individuals into the expected morphotype. The allometric analysis showed a 0% influence of the size on Canonical Factor 1, and a 3% influence on Canonical Factor 2, indicating that the size of the individuals did not influence the results on the shape of the mouth hook (Figure 4).

The mouth shape outlines for each individual were aligned, rotated and grouped to build the representative shapes of the morphotypes (Figure 5). The morphotypes

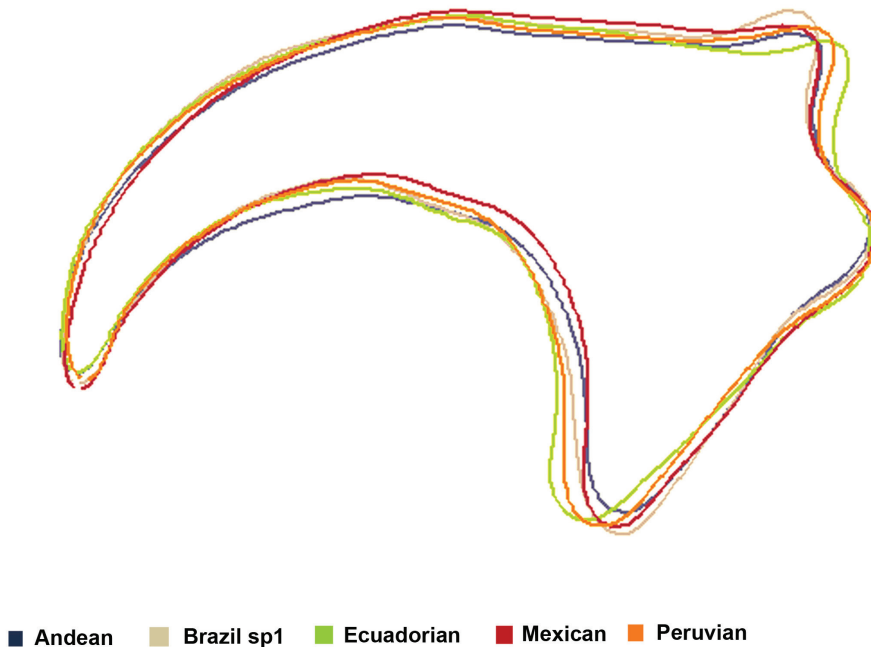


**Figure 3.** Grouping analysis of five morphotypes of the *Anastrepha fraterculus* complex, according to the shape of the mouth hook of third-instar larvae based on the values of the first two canonical factors in the discriminant analysis. The contribution of the first factor was 44%, and that of the second was 27%.



**Figure 4.** Allometric study indicating the influence of the mouth hook size in grouping five morphotypes of the *Anastrepha fraterculus* complex, studied with an elliptical Fourier analysis.





**Figure 5.** Representative outline of the mouth hook shape in third-instar larvae of five morphotypes of the *Anastrepha fraterculus* complex, obtained through an elliptical Fourier analysis.

showed variability mainly over the dorsal and ventral apodemes and, less noticeably, over the width of the middle part.

*Size variability of the individuals.* The variability of the individual sizes was studied through the morphometry of the larvae. The DFA included all 18 variables of the model (excluding CSL, M2, X4, X6, X7, and X8); 10 of the variables resulted in statistically significant differences for the segregation of the morphotypes (Wilks' Lambda: 0.005 approx.  $F(72,309)=12.224$ ,  $p<0.0001$ ) (Table 2). The statistically significant variables were the body length and width of the larvae, three measurements of the mouth hook, the hypopharyngeal sclerite, and the size and number of the anterior spiracle tubules. The average body length (BL) was greater in the Peruvian, Ecuadorian and Mexican morphotypes, and body width (BW) was greater in the Andean morphotype; the ratio between these two measurements (X1) was lower in the Andean population. The HSL was, on average, longer in the Andean and Ecuadorian morphotypes. The mouth hook length between the apex and the ventral apodeme (M1) was shorter for the Peruvian morphotype; the mean width in the middle part of the mouth hook (M6) was greater for individuals of the Ecuadorian morphotype and smallest for the Peruvian morphotypes. The average basal width of the ventral apodeme (M8) was narrower in specimens of the Brazilian-1 and Peruvian morphotypes. The anterior spiracle

**Table 2.** Independent contribution to the discriminant model of each of the variables measured from third-instar larvae of five morphotypes of the *Anastrepha fraterculus* complex. \* < 0.05 = statistically significant.

Variables	Wilks' Lammbda	F-remove (4.78)	p-value
ASD	0.006756	6.85482	<0.0001*
M5	0.005493	1.92970	0.113783
ASL	0.008777	14.74068	<0.0001*
X9	0.006039	4.05858	0.004*
M6	0.005942	3.67924	0.008*
X1	0.006071	4.18342	0.004*
M3	0.005450	1.76149	0.145094
X3	0.005190	0.74581	0.563734
M1	0.005842	3.29114	0.015*
HSL	0.005989	3.86235	0.006*
HSH	0.005509	1.99152	0.103994
X2	0.005472	1.84521	0.128604
M8	0.006221	4.76893	0.001*
M4	0.005597	2.33372	0.062912
M7	0.005471	1.84152	0.129291
BL	0.006709	6.67357	0.0001*
BW	0.006513	5.90854	0.0003*
X5	0.005293	1.14799	0.340365

was longer in specimens of the Andean morphotype, and the number of spiracle tubules was smaller in the Brazilian-1 and Peruvian morphotypes. The X9 ratio between the CSL and the length of the mouth hook from the apex to the ventral apodeme (M1) was greater for Peruvian individuals and smaller for Mexican individuals (Table 3). The standard deviations of the measurements were low (Table 3), indicating that accuracy of measurements was high and repeatable.

The canonical analysis resulted in four canonical roots, and the Chi-squared test showed statistical significance for all the roots. CV-1 had 51.6% of the discrimination power, CV-2 had 24.2%, CV-3 had 19.3% and CV-4 had 4.9%. In the first root, variables with major contribution to the separation of the groups were the anterior spiracle length (ASL) and the number of tubules of the anterior spiracle (AST), followed in importance by the hypopharyngeal sclerite length (HSL), body width (BW), and dimensions of the mouth hook M3 (length from the apex to the most distal and dorsal point) and M8 (width of the ventral apodeme). The most important variables for CV-2 were the ASL, BL/BW (X1) and mouth hook length/width (X2), followed by the BL and HSL (Table 4). The 3D graph of the morphotype centroids, including the first three canonical roots, shows the separation of the different populations (Figure 6).

**Table 3.** Means (mm) and standard deviations of 24 morphometric variables of third-instar larvae of five morphotypes of the *Anastrepha fraterculus* complex.

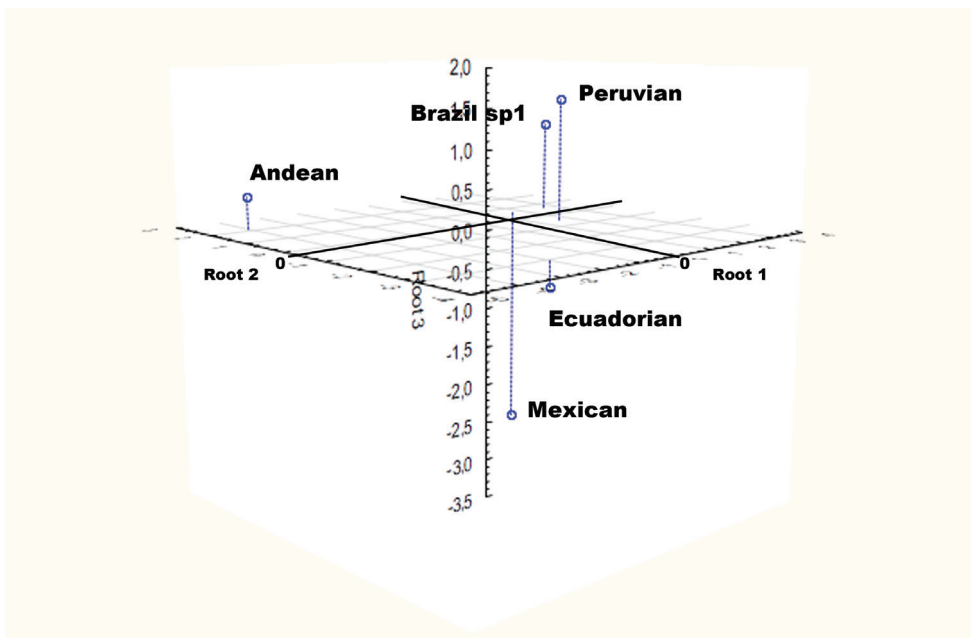
Population	BL	BW	HSL	HSR	CSL	M1	M2	M3	M4	M5	M6	M7
Andean	9.22±0.97	2.09±0.19	0.2±0.015	0.07±0.006	1.14±0.07	0.17±0.01	0.25±0.01	0.23±0.01	0.15±0.016	0.08±0.007	0.06±0.008	0.1±0.007
BrasilSp1	8.77±0.74	1.71±0.29	0.17±0.012	0.07±0.007	1.05±0.04	0.15±0.02	0.23±0.02	0.21±0.02	0.14±0.016	0.08±0.006	0.05±0.007	0.09±0.006
Peruvian	9.48±0.38	1.87±0.14	0.18±0.007	0.07±0.005	1.09±0.04	0.14±0.01	0.22±0.01	0.21±0.01	0.14±0.008	0.08±0.005	0.05±0.004	0.09±0.007
Ecuador	10.02±0.37	1.89±0.13	0.21±0.013	0.07±0.008	1.15±0.04	0.16±0.01	0.26±0.01	0.25±0.01	0.16±0.012	0.08±0.006	0.06±0.006	0.1±0.006
Mexico	9.7±0.73	2±0.17	0.19±0.026	0.07±0.009	1.15±0.11	0.18±0.03	0.27±0.03	0.25±0.03	0.17±0.023	0.09±0.008	0.06±0.011	0.11±0.014
All Grps	9.44±0.79	1.91±0.23	0.19±0.02	0.07±0.007	1.12±0.08	0.16±0.02	0.25±0.03	0.23±0.02	0.15±0.019	0.08±0.009	0.06±0.009	0.1±0.011

Population	M8	X1	X2	X3	X4	X5	X6	ASL	ASD	X7	X8	X9	Valid N
Andean	0.06±0.008	4.41±0.31	1.14±0.10	1.69±0.15	2.21±0.24	3.26±0.32	1.55±0.10	0.34±0.07	14.45±0.89	5.79±0.32	4.96±0.39	6.72±0.49	20
BrasilSp1	0.05±0.005	5.23±0.72	1.07±0.08	1.59±0.11	2.03±0.26	3±0.31	1.44±0.09	0.19±0.02	10.55±0.83	6.09±0.45	5.14±0.36	6.91±0.70	20
Peruvian	0.06±0.006	5.1±0.34	1±0.07	1.56±0.09	1.9±0.17	2.94±0.21	1.46±0.07	0.2±0.02	11.55±1.0	6.09±0.25	5.19±0.28	7.56±0.45	20
Ecuador	0.07±0.007	5.32±0.31	1.01±0.09	1.59±0.11	1.98±0.16	3.12±0.23	1.51±0.09	0.24±0.02	14.1±1.12	5.47±0.28	4.68±0.24	7.02±0.48	20
Mexico	0.06±0.010	4.86±0.32	1.07±0.05	1.6±0.07	1.93±0.22	2.89±0.22	1.49±0.09	0.23±0.03	12.75±1.02	5.98±0.31	4.55±0.24	6.34±0.51	20
All Grps	0.06±0.009	4.98±0.54	1.06±0.09	1.61±0.12	2.01±0.24	3.04±0.29	1.49±0.10	0.24±0.06	12.68±1.77	5.88±0.40	4.9±0.39	6.91±0.66	100

**Table 4.** Correlation between the variables and canonical roots from the discriminant analysis for 24 measurements of third-instar larvae of five morphotypes of the *Anastrepha fraterculus* complex.

Variable	Root 1	Root 2	Root 3	Root 4
ASD	-0.545921	-0.100158	-0.344710	0.172453
M5	0.041755	-0.071879	-0.653270	0.146808
ASL	-0.513976	0.354166	-0.104138	-0.004608
X9	0.036323	-0.175930	0.385942	0.368080
M6	-0.119046	-0.177843	-0.293162	-0.329549
X1	0.159367	-0.335778	0.090498	-0.231802
M3	-0.183020	-0.159496	-0.634346	0.078811
X3	-0.118893	0.134014	-0.037045	-0.103410
M1	-0.106642	0.111731	-0.475412	-0.141087
HSL	-0.254104	-0.211098	-0.239891	-0.017785
HSH	-0.071814	0.014497	0.099759	0.055553
X2	-0.103959	0.305811	-0.053167	-0.234816
M8	-0.189002	-0.150179	-0.247975	0.111262
M4	-0.038899	-0.119367	-0.407167	0.016389
M7	-0.077578	-0.007283	-0.429200	0.136471
BL	-0.075040	-0.250882	-0.204123	0.306914
BW	-0.182774	0.132194	-0.198878	0.344580
X5	-0.177914	0.039586	0.090199	-0.187916
Eigenvalue	6.9315	3.239	2.599	0.653
Cumulative proportion	0.5164	0.758	0.951	1.000



**Figure 6.** 3D scatterplot of discriminant function analysis applied to the centroid values of 24 measurements in third-instar larvae of five morphotypes of the *Anastrepha fraterculus* complex.

**Table 5.** Classification matrix of individuals according to a predictive model of third-instar larvae of five morphotypes of the *Anastrepha fraterculus* complex. Rows: Observed classifications; Columns: Predicted classifications. Same probabilities for all the groups.

Group	Percent	Andean	Brasil sp1	Peruvian	Ecuador	Mexico
Andean	100.0000	20	0	0	0	0
BrasilSp1	90.0000	0	18	2	0	0
Peruvian	95.0000	0	1	19	0	0
Ecuadorian	100.0000	0	0	0	20	0
Mexican	95.0000	0	1	0	0	19
Total	96.0000	20	20	21	20	19

The prediction model indicated that 96% of the individuals were correctly placed in their respective morphotypes; all of the Andean and Ecuadorian specimens were properly classified, and only two individuals from Brazilian-1, one from Mexico and one from Peru were incorrectly classified (Table 5).

## Discussion

The results obtained from our study of the mouth hook shape of the third-instar larvae established that variation exists in the shape of this structure that usefully separates the five morphotypes. Moreover, it was possible to confirm the presence of variability in the dorsal and ventral apodeme areas. Geometric morphometry is a sensitive tool to study the presence of cryptic species (Adams et al. 2004, Dujardin 2008, Dujardin et al. 2010, 2014), and recently, outline geometric morphometry has facilitated the study of complex structures, for example, in immature stages of insects (Dujardin et al. 2014). To the extent of our knowledge, this is the first study to use outline-based morphometrics for immature stages of tephritid fruit flies.

Geometric morphometry has been used for differentiation of fruit flies (Kitthawee and Dujardin 2010, Yee et al. 2011, Schutze et al. 2012, Perre et al. 2014, Hernández-Ortiz et al. 2015), in all cases on adult structures, leading to the possibility of differentiating formal species or cryptic species complexes. Unfortunately, geometric morphometry does not generate characters that can be used in traditional taxonomic keys, and further studies are needed to determine how to use this information (Dujardin et al. 2010). An alternative is, for example, the development of automatic systems for identification, as suggested by Faria et al. (2014), based on the geometric morphology of adults from several species of *Anastrepha*. The results obtained from our study suggest that the methods proposed here could be used for developing an identification system of this type that extends to larvae.

The results of the linear morphometry were also highly satisfactory, reaching a 96% accuracy of the predicted classification for the studied individuals. According to what was previously reported regarding size variation of insects through generations

of laboratory rearing (Jaramillo et al. 2002, Jirakanjanakit et al. 2008), it is possible that these results were especially influenced by the long breeding of the Peruvian morphotype. Repeatability of results could be supposed based on the low variance of the variables.

Steck et al. (1990) used morphometric and morphological variables to differentiate 13 species of *Anastrepha* based on the study of third-instar larvae. The accuracy of the key produced was high for species differentiation, despite the high variability in some of the species. Samples of the nominal species *A. fraterculus* from various parts of Latin America were included in that study, and the authors found that it was one of the species with highest variability in the characters analyzed. Currently it is well known that, in reality, the authors studied different cryptic species, hence the difficulty in identifying *A. fraterculus* species. However, these authors could establish differences between species through normalization of variables by transformation and construction of linear discriminant functions. Our study included new variables to differentiate the cryptic species of *A. fraterculus*, which could complement the study of Steck et al. (1990) for recognizing species, by including additional morphological characters.

Still these techniques have some difficulties. The most common errors made in this analysis result from poor mounting of structures, digital imaging and determination of landmarks (Dujardin et al. 2010). The principal error in our study could be in the imprecision of the landmarks; however, after some testing, our approach resulted in a minimized error and in a consistent and reliable data for analysis. Outcomes of the classification of individuals and the low variance on linear variables of the model supported this conclusion.

Specimens studied here derive from different sources, either from wild samples reared on natural hosts or from lab strains reared on artificial diets, however we do not know the effects of this on the measured structures, and further studies are needed. Some authors have suggested that developmental conditions affect the size of insects (Jaramillo et al. 2002, Schutze et al. 2012). Jaramillo et al. (2002) and Jirakanjanakit et al. (2008) found variability in the head and wing size of insects reared in the laboratory for several generations, but not in the shape until after at least 10 generations. Our sample of the Peruvian morphotype came from a colony artificially reared since 2002, and may deviate from wild specimens. However the low values resulting from the allometric studies (CV-1=0%, CV-2=3%, Figure 4) confirm that our results are due to the shape but not the size of the individuals.

In many cases, the use of morphological characters of immature stages of insects for phylogenetic studies has helped to improve the understanding of relationships among groups (see revision in Meier and Lim 2009). Even though, immature stages have been widely ignored in studies of taxonomy, systematics and phylogeny, perhaps due to the difficulty of associating them with the adults and of determining stable morphological characters for them (Meier and Lim 2009). We suggest that further effort should be made in rearing specimens and revising methods and characters.

## Conclusions

Outline geometric morphometry and linear morphometry proved to be useful tools for the study of cryptic species of the *A. fraterculus* complex. The results obtained from this work with third-instar larvae should be expanded to include additional populations to strengthen the dataset and advance our tools to study cryptic species of economically important fruit flies.

## Acknowledgments

The senior author thanks COLCIENCIAS (project 1105-489-25567), the International Atomic Energy Agency (project 16060/R0) and the Research Fund of the University of Tolima for financial support given for this study; VHO acknowledges the International Atomic Energy Agency for funding the research project (16080/R0). Financial support by the IAEA was provided as part of the FAO/IAEA Coordinated Research Project on “Resolution of cryptic species complexes of tephritid pests to overcome constraints to SIT and international trade”. DS is a fellow of CNPq.

## References

- Adams DC, Rohlf FJ, Slice DE (2004) Geometric morphometrics: Ten years of progress following the “revolution”. *Italian Journal of Zoology* 71: 5–16. doi: 10.1080/11250000409356545
- Adobe System Incorporated (2010) Adobe PhotoShop CS5 Extended version 12.0x64, 1990–2010.
- Arnqvist G, Mårtensson T (1998) Measurement error in geometric morphometrics: empirical strategies to assess and reduce its impact on measures of shape. *Acta Zoologica Academiae Scientiarum Hungaricae* 44: 73–96.
- Baylac M, Villemant C, Simbolotti G (2003) Combining geometric morphometrics with pattern recognition for the investigation of species complexes. *Biological Journal of the Linnean Society* 80: 89–98. doi: 10.1046/j.1095-8312.2003.00221.x
- Bickford D, Lohman DL, Sodhi NS, Ng PKL, Meier R, Winker K, Ingram KK, Das I (2007) Cryptic species as a window on diversity and conservation. *Trends in Ecology and Evolution* 22: 148–155. doi: 10.1016/j.tree.2006.11.004
- Břízová R, Mendonça AL, Vaníčková L, Mendonça AL, Da Silva CE, Tomčala A, Paranhos BAJ, Dias VS, Joachim-Bravo IS, Hoskovec M, Kalinová B, Nascimento RR (2013) Pheromone analyses of the *Anastrepha fraterculus* (Diptera: Tephritidae) cryptic species complex. *Florida Entomologist* 96: 1107–1115. doi: 10.1653/024.096.0351
- Cáceres C, Segura DF, Vera MT, Wornoayporn V, Cladera JL, Teal P, Sapountzis P, Bourtzis K, Zacharopoulou A, Robinson AS (2009) Incipient speciation revealed in *Anastrepha fraterculus* (Diptera; Tephritidae) by studies on mating compatibility, sex pheromones, hybridization and cytology. *Biological Journal of the Linnean Society* 97: 152–165. doi: 10.1111/j.1095-8312.2008.01193.x

- Carroll L, Wharton R (1989) Morphology of the immature stages of *Anastrepha ludens* (Diptera: Tephritidae). *Annals of the Entomological Society of America* 82: 201–214. doi: 10.1093/aesa/82.2.201
- De Queiroz K (2007) Species concepts and species delimitation. *Systematic Biology* 56: 879–886. doi: 10.1080/10635150701701083
- Devescovi F, Abraham S, Kelly A, Nolzco N, Castañeda MR, Tadeo E, Caceres C, Segura D, Vera T, Joachim-Bravo I, Canal NA, Rull J (2014) Ongoing speciation within the *Anastrepha fraterculus* (Diptera: Tephritidae) cryptic species complex: the case of the Andean morphotype. *Entomologia Experimentalis et Applicata* 152: 238–247. doi: 10.1111/eea.12219
- Dujardin JP (2008) Morphometrics applied to medical entomology. *Infection, Genetics and Evolution* 8: 875–890. doi: 10.1016/j.meegid.2008.07.011
- Dujardin JP (2013) MoMe-CLIC: Morphometrics in Medical Entomology, Collection of Landmarks for Identification and Characterization. <http://mome-clic.com>
- Dujardin JP, Kaba D, Henry AB (2010) The exchangeability of shape. *BMC Research Notes* 3: 266. doi: 10.1186/1756-0500-3-266
- Dujardin JP, Kaba D, Solano P, Dupraz M, McCoy KD, Jaramillo-O N (2014) Outline-based morphometrics, an overlooked method in arthropod studies? *Infections, Genetics and Evolution* 28: 704–714. doi: 10.1016/j.meegid.2014.07.035
- Dutra VS, Ronchi-Teles B, Steck GJ, Silva JG (2012) Description of larvae of *Anastrepha* spp. (Diptera: Tephritidae) in the *fraterculus* group. *Annals of the Entomological Society of America* 105: 529–538 doi: 10.1603/AN11180
- Faria FA, Perre P, Zucchi RA, Jorge LR, Lewinsohn TM, Rocha A, Torres RS (2014) Automatic identification of fruit flies (Diptera: Tephritidae). *Journal of Visual Communication and Image Representation* 25: 1516–1527. doi: 10.1016/j.jvcir.2014.06.014
- Frías D, Hernández-Ortiz V, Vaccaro NC, Bartolucci AF, Salles LA (2006) Comparative morphology of immature stages of some frugivorous species of fruit flies (Diptera: Tephritidae). *Israel Journal of Entomology* 35/36: 423–457.
- Frías D, Selivon D, Hernández V (2008) Taxonomy of immature stages: new morphological characters for Tephritidae larvae identification. In: Sugayana R, Zucchi RA, Ovruski S, Sivinski J (Eds) *Fruit flies of economic importance: from basic to applied knowledge*. 7th International Symposium on Fruit Flies of Economic Importance, Salvador, Brazil, September 2006. Press Color Gráficos Especializados Ltda, 29–44.
- Frías D, Hernández-Ortiz V, López L (2009) Description of the third-instar of *Anastrepha leptozona* Hendel (Diptera: Tephritidae). *Neotropical Entomology* 38: 491–496. doi: 10.1590/S1519-566X2009000400008
- Goday C, Selivon D, Perondini ALP, Greciano PG, Ruiz MF (2006) Cytological characterization of sex chromosomes and ribosomal DNA location in *Anastrepha* species (Diptera, Tephritidae). *Cytogenetic and Genome Research* 114: 70–76. doi: 10.1159/000091931
- Helicon Focus (2013) Helicon Focus, version 6.0.18, 2000–2013. Helicon Soft Ltd. <http://www.heliconsoft.com>
- Hernández-Ortiz V, Gómez-Amaya JA, Sánchez BA, McPheron BA, Aluja M (2004) Morphometric analysis of Mexican and South American populations of the *Anastrepha fraterculus*



- complex (Diptera: Tephritidae) and recognition of a distinct Mexican morphotype. *Bulletin of Entomological Research* 94: 487–499. doi: 10.1079/BER2004325
- Hernández-Ortiz V, Bartolucci A, Morales-Valles P, Frias D, Selivon D (2012) Cryptic species of the *Anastrepha fraterculus* complex (Diptera:Tephritidae): A multivariate approach for the recognition of South American morphotypes. *Annals of the Entomological Society of America* 105: 305–318. doi: 10.1603/AN11123
- Hernández-Ortiz V, Canal NA, Tigrero Salas JO, Ruíz-Hurtado FM, Dzul-Cauich JF (2015) Taxonomy and phenotypic relationships of the *Anastrepha fraterculus* complex in the Mesoeamerican and Pacific Neotropical dominions (Diptera, Tephritidae). In: De Meyer M, Clarke AR, Vera MT, Hendrichs J (Eds) *Resolution of Cryptic Species Complexes of Tephritid Pests to Enhance SIT Application and Facilitate International Trade*. *ZooKeys* 540: 95–124. doi: 10.3897/zookeys.540.6027
- Jaramillo N, Castillo D, Wolff M (2002) Geometric morphometric differences between *Panstrongylus geniculatus* from field and laboratory. *Memorias do Instituto Oswaldo Cruz* 97: 667–673. doi: 10.1590/S0074-02762002000500015
- Jirakanjanakit N, Leemingsawat S, Dujardin JP (2008) The geometry of the wing of *Aedes (Stegomyia) aegypti* in isofemale lines through successive generations. *Infection, Genetics and Evolution* 8: 414–421. doi: 10.1016/j.meegid.2007.05.004
- Kitthawee S, Dujardin JP (2010) The geometric approach to explore the *Bactrocera tau* complex (Diptera: Tephritidae) in Thailand. *Zoology* 113: 243–249. doi: 10.1016/j.zool.2009.12.002
- Krosch NM, Schutze MK, Armstrong KF, Boontop Y, Boykin LM, Chapman TA, Englezou A, Cameron SL, Clarke AR (2013) Piecing together an integrative taxonomic puzzle: microsatellite, wing shape and aedeagus length analyses of *Bactrocera dorsalis s.l.* (Diptera: Tephritidae) find no evidence of multiple lineages in a proposed contact zone along the Thai/Malay Peninsula. *Systematic Entomology* 38: 2–13. doi: 10.1111/j.1365-3113.2012.00643.x
- Meier R, Lim GS (2009) Conflict, convergent evolution, and the relative importance of immature and adult characters in endopterygote phylogenetics. *Annual Review of Entomology* 54: 85–104. doi: 10.1146/annurev.ento.54.110807.090459
- Norrbom AL, Zucchi RA, Hernández-Ortiz V (1999) Phylogeny of the genera *Anastrepha* and *Toxotrypana* (Trypetinae: Toxotrypanini) based on morphology. In: Aluja M, Norrbom AL (Eds) *Fruit Flies (Tephritidae): Phylogeny and Evolution of Behavior*. CRC Press, Boca Raton, 299–341.
- Norrbom AL, Korytkowski CA, Zucchi RA, Uramoto K, Venable GL, McCormick J, Dallwitz MJ (2013) *Anastrepha* and *Toxotrypana*: descriptions, illustrations, and interactive keys. Version: 28<sup>th</sup> September 2013. <http://delta-intkey.com/anatox/citation.htm>
- Perre P, Jorge LR, Lewinsohn TM, Zucchi RA (2014) Morphometric differentiation of fruit fly pest species of the *Anastrepha fraterculus* group (Diptera: Tephritidae). *Annals of the Entomological Society of America* 10: 490–495. doi: 10.1603/AN13122
- Ruiz-Arce R, Barr N, Owen CL, Thomas DB, McPherson BA (2012) Phylogeography of *Anastrepha obliqua* inferred with mtDNA sequencing. *Journal of Economic Entomology* 105: 2147–2160. doi: 10.1603/EC1221

- Schutze MK, Jessup A, Clarke AR (2012) Wing shape as a potential discriminator of morphologically similar pest taxa within the *Bactrocera dorsalis* species complex (Diptera: Tephritidae). *Bulletin of Entomological Research* 102: 103–111. doi: 10.1017/S0007485311000423
- Selivon D, Perondini ALP (1998) Eggshell morphology in two cryptic species of *Anastrepha fraterculus* (Diptera: Tephritidae). *Annals of the Entomological Society of America* 91: 473–478. doi: 10.1093/aesa/91.4.473
- Selivon D, Perondini ALP, Morgante JS (1999) Haldane's rule and other aspects of reproductive isolation observed in the *Anastrepha fraterculus* complex (Diptera: Tephritidae). *Genetics and Molecular Biology* 22: 507–510. doi: 10.1590/S1415-47571999000400007
- Selivon D, Vretos C, Fontes L, Perondini ALP (2004) New variant forms in the *Anastrepha fraterculus* complex (Diptera: Tephritidae). In: Barnes BN (Ed.) *Proceedings of the 6<sup>th</sup> International Symposium of Fruit Flies of Economic Importance*, Stellenbosch, South Africa, May 2002. Iteg Scientific Publications, Irene-South Africa, 253–258.
- Selivon D, Perondini ALP, Morgante JS (2005) A genetic-morphological characterization of two cryptic species of *Anastrepha fraterculus* complex (Diptera, Tephritidae). *Annals of the Entomological Society of America* 98: 367–381. doi: 10.1603/0013-8746(2005)098[0367:AG-COTC]2.0.CO;2
- Smith-Caldas MRB, McPherson BA, Silva JG, Zucchi RA (2001) Phylogenetic relationships among species of the *fraterculus* group (*Anastrepha*: Diptera: Tephritidae) inferred from DNA sequences of mitochondrial Cytochrome Oxidase I. *Neotropical Entomology* 30: 565–573. doi: 10.1590/S1519-566X2001000400009
- StatSoft Inc (2014) *Statistica Software for statistical analysis*, version 12, 1984–2014.
- Steck GJ (1991) Biochemical systematics and population genetic structure of *Anastrepha fraterculus* and related species (Diptera: Tephritidae). *Annals of the Entomological Society of America* 84: 10–28. doi: 10.1093/aesa/84.1.10
- Steck GJ, Malavasi A (1988) Description of the immature stages of *Anastrepha bistrigata* (Diptera: Tephritidae). *Annals of the Entomological Society of America* 81: 1004–1009. doi: 10.1093/aesa/81.6.1004
- Steck G, Wharton A (1988) Description of immature stages of *Anastrepha interrupta*, *A. limae*, and *A. grandis* (Diptera: Tephritidae). *Annals of the Entomological Society of America* 81(6): 994–1003. doi: 10.1093/aesa/81.6.994
- Steck GJ, Sheppard WS (1993) Mitochondrial DNA variation in *Anastrepha fraterculus*. In: Aluja M, Liedo P (Eds) *Fruit Flies: Biology and Management*. Springer Verlag, New York, 9–14. doi: 10.1007/978-1-4757-2278-9\_2
- Steck G, Carroll L, Celedonio H, Guillen J (1990) Methods for identification of *Anastrepha* larvae (Diptera: Tephritidae), and key to 13 species. *Proceedings of the Entomological Society of Washington* 92: 333–346.
- Tatsuta H, Iwata H, Goka K (2011) Morphometric studies of male Lucanid beetle mandibles: shape variation between hybrid subspecies. In: Lestrel PE (Ed.) *Biological Shape Analysis. 1<sup>st</sup> International Symposium on Biological Shape Analysis*, Okinawa, Japan, June 2009. World Scientific Publishing, Singapore, 87–103. doi: 10.1142/9789814355247\_0007

- Toro IMV, Manríquez SG, Suazo GI (2010) Morfometría geométrica y el estudio de las formas biológicas: de la morfología descriptiva a la morfología cuantitativa. *International Journal of Morphology* 28: 977–990. doi: 10.4067/S0717-95022010000400001
- Vaničková L, Virgilio M, Tomčala A, Břízová R, Ekesi S, Hoskovec M, Kalinová B, Nascimento RR do, De Meyer M (2014) Resolution of three cryptic agricultural pests (*Ceratitis fasciventris*, *C. anonae*, *C. rosa*, Diptera: Tephritidae) using cuticular hydrocarbon profiling. *Bulletin of Entomological Research* 104: 631–638. doi: 10.1017/S0007485314000406
- Vaničková L, Břízová R, Mendonça AL, Pompeiano A, Nascimento RR do (2015) Intraspecific variation of cuticular hydrocarbon profiles in the *Anastrepha fraterculus* (Diptera: Tephritidae) species complex. *Journal of Applied Entomology*. doi: 10.1111/jen.12204
- Vera MT, Cáceres C, Wornoyaporn V, Islam A, Robinson AS, De La Vega MH, Hendrichs J, Cayol JP (2006) Mating incompatibility among populations of the South American fruit fly *Anastrepha fraterculus* (Diptera: Tephritidae). *Annals of the Entomological Society of America* 99: 387–397.
- White IM, Headrick DH, Norrbom AL, Carroll LE (1999) Glossary. In: Aluja M, Norrbom AL (Eds) *Fruit Flies (Tephritidae): Phylogeny and evolution of behavior*. CRC Press, Boca Raton, FL, 881–924.
- Wiens JJ (2007) Species delimitation: New approaches for discovering diversity. *Systematic Biology* 56: 875–878. doi: 10.1080/10635150701748506
- Yamada MS, Selivon D (2001) Rose, an eye color mutation in a species of the *Anastrepha fraterculus* complex (Diptera: Tephritidae). *Annals of the Entomological Society of America* 94: 592–595. doi: 10.1603/0013-8746
- Yeates DK, Seago A, Nelson L, Cameron SL, Joseph L, Trueman JWH (2011) Integrative taxonomy, or iterative taxonomy? *Systematic Entomology* 36: 209–216. doi: 10.1111/j.1365-3113.2010.00558.x
- Yee WL, Sheets HD, Chapman PS (2011) Analysis of surstylus and aculeus shape and size using geometric morphometrics to discriminate *Rhagoletis pomonella* and *Rhagoletis zephyria* (Diptera: Tephritidae). *Annals of the Entomological Society of America* 104: 105–114. doi: 10.1603/AN10029
- Zelditch ML, Swiderski DL, Sheets HD, Fink WL (2004) *Geometric Morphometrics for Biologists: A Primer*. Elsevier, Academic Press, New York, 436 pp.