

ARTICLE

Received 16 Feb 2015 | Accepted 15 May 2015 | Published 7 Jul 2015

DOI: 10.1038/ncomms8499

OPEN

SUMO and ubiquitin-dependent XPC exchange drives nucleotide excision repair

Loes van Cuijk^{1,*}, Gijsbert J. van Belle^{2,*}, Yasemin Turkyilmaz¹, Sara L. Poulsen³, Roel C. Janssens¹, Arjan F. Theil¹, Mariangela Sabatella¹, Hannes Lans¹, Niels Mailand³, Adriaan B. Houtsmuller², Wim Vermeulen¹ & Jurgen A. Marteijn¹

XPC recognizes UV-induced DNA lesions and initiates their removal by nucleotide excision repair (NER). Damage recognition in NER is tightly controlled by ubiquitin and SUMO modifications. Recent studies have shown that the SUMO-targeted ubiquitin ligase RNF111 promotes K63-linked ubiquitylation of SUMOylated XPC after DNA damage. However, the exact regulatory function of these modifications *in vivo* remains elusive. Here we show that RNF111 is required for efficient repair of ultraviolet-induced DNA lesions. RNF111-mediated ubiquitylation promotes the release of XPC from damaged DNA after NER initiation, and is needed for stable incorporation of the NER endonucleases XPG and ERCC1/XPF. Our data suggest that RNF111, together with the CRL4^{DDB2} ubiquitin ligase complex, is responsible for sequential XPC ubiquitylation, which regulates the recruitment and release of XPC and is crucial for efficient progression of the NER reaction, thereby providing an extra layer of quality control of NER.

¹Department of Genetics, Cancer Genomics Netherlands Erasmus MC, Wytemaweg 80, Rotterdam 3015 CN, The Netherlands. ²Department of Pathology, Josephine Nefkens Institute, Erasmus MC, Dr Molewaterplein 50, Rotterdam 3015 GE, The Netherlands. ³Ubiquitin Signaling Group, Protein Signaling Program, The Novo Nordisk Foundation Center for Protein Research, University of Copenhagen, Blegdamsvej 3B, Copenhagen DK-2200, Denmark. * These authors contributed equally to this work. Correspondence and requests for materials should be addressed to J.A.M. (email: J.Marteijn@erasmusmc.nl).

DNA integrity is constantly challenged by internal and external DNA-damaging agents that induce DNA lesions. When not properly repaired, DNA lesions may result in malignant transformation or accelerated ageing. Different DNA repair mechanisms exist that collectively remove most lesions and safeguard genome stability. Nucleotide excision repair (NER) is one of these mechanisms, which removes—in a multistep process—a wide variety of helix-distorting lesions, including ultraviolet (UV)-induced cyclobutane pyrimidine dimers (CPDs) and 6-4 pyrimidine-pyrimidone photoproducts (6-4PPs)¹. Lesions located in the transcribed strand of active genes block elongating RNA polymerase II and are specifically processed by a dedicated transcription-coupled NER (TC-NER) sub-pathway. However, the vast majority of helix-distorting DNA lesions located anywhere in the genome are targeted by the global genome NER sub-pathway (GG-NER)¹. After damage recognition by one of these sub-pathways, the 10-subunit TFIIH complex is recruited^{2,3} to unwind the DNA around the lesion. TFIIH and XPA, which also bind the damaged strand⁴, verify the presence of lesions⁵. Next, RPA binds the undamaged strand and plays a role in correct positioning of the structure-specific endonucleases XPG and ERCC1/XPF to excise a ~25-nucleotide stretch of single-stranded DNA containing the lesion⁶. The activity of these endonucleases and thereby the excision of the DNA lesion is tightly orchestrated. First, XPG is recruited either independently⁷ or through its interaction with TFIIH⁸. Next, ERCC1/XPF is recruited that can only incise the DNA in the presence of XPG. Only after the 5' incision has been completed by ERCC1/XPF, the 3' incision by XPG is triggered⁹. After incision, the DNA is restored to its original state by DNA synthesis and ligation steps.

Within GG-NER, DNA damage recognition occurs through binding of the XPC complex to lesion-induced helix distortions¹⁰ and is essential for assembly of the core NER factors and progression of the NER reaction³. XPC is part of a heterotrimeric complex together with one of the two mammalian orthologs (RAD23A or RAD23B) of the *Saccharomyces cerevisiae* Rad23p¹¹ and centrin2 (ref. 12). Although XPC is the main DNA damage sensor of GG-NER, it does not efficiently recognize UV-induced CPDs, which are the most abundant UV-induced DNA lesions. For efficient repair of these lesions initial binding of the UV-DDB complex, a heterodimer consisting of DDB1 and DDB2 (XPE), is required^{13,14}. UV-DDB is not only involved in damage detection, but together with Cullin-4A (CUL4A) and Rbx1/Roc1 (ref. 15) this complex possesses E3 ubiquitin ligase activity that—amongst others—mediates polyubiquitylation of the DNA damage sensors DDB2 and XPC. As ubiquitin can use all seven internal lysine residues (K6, K11, K27, K29, K33, K48 and K63) and its N terminus for chain formation, different chain linkages can be formed. These various polyubiquitin chain types have distinct structures and different consequences for the target protein¹⁶. While ubiquitylated DDB2 is targeted for degradation¹⁴, ubiquitylated XPC is not, but acquires increased affinity for damaged DNA *in vitro*¹⁷. Following UV irradiation XPC is not only modified by ubiquitin, but also by the small ubiquitin-like modifier (SUMO)^{18–20} in a DDB2- and XPA-dependent manner^{19,20}, which was shown to protect XPC from proteasomal degradation.

Recently, an additional ubiquitin E3-ligase; RNF111, that promotes XPC ubiquitylation was identified²¹. RNF111, also known as Arkadia, was originally named after the Arkadia mutation in mice. Homozygous *Arkadia* mutants are non-viable since they fail to form the regulatory primitive node, which is crucial during early gastrulation. This problem in the development of the mouse embryo is most likely caused by the loss of the ubiquitin ligase activity of RNF111 that promotes transforming growth factor- β signalling^{22,23}. RNF111 belongs to

the class of SUMO-targeted ubiquitin ligases (STUbLs), which facilitate crosstalk between SUMOylation and ubiquitylation. Accordingly, RNF111 specifically targets SUMOylated XPC and modifies it with K63-linked ubiquitin chains dependent on the E2 conjugating enzyme UBC13 (ref. 21). Altogether, these observations illustrate the importance of ubiquitin and ubiquitin-like modifications in regulating the DNA damage recognition factors that initiate NER²⁴. In this study, we investigated the molecular function of the RNF111-dependent ubiquitylation of XPC and its role in NER. We show that although RNF111 is not essential for GG-NER, it strongly enhances the repair reaction by stimulating the release of XPC from damaged DNA, thereby enabling the progress of the NER reaction by recruitment of the endonucleases XPG and XPF/ERCC1.

Results

RNF111 is required for efficient GG-NER. To study the role of RNF111 during NER we first determined the repair capacity in the absence of RNF111 by measuring the UV-induced unscheduled DNA synthesis (UDS) in the first 3 h after UV-induced damage²³, which is a measure of GG-NER activity. In line with a previous study²¹, NER-deficient *Xpc*^{-/-} MEFs and *Rnf111*^{-/-} MEFs (clone A and B) displayed a strongly reduced repair capacity as compared with NER-proficient wild-type (WT) MEFs (Fig. 1a,b). To test whether this reduced repair capacity in *Rnf111*^{-/-} MEFs is caused by a blocked or delayed NER reaction, 6-4PP repair kinetics were determined in WT, *Xpc*^{-/-} and *Rnf111*^{-/-} MEFs. Cells were fixed at different time points after UV irradiation (10 J m⁻²) and immunostained for 6-4PPs. In WT MEFs the vast majority (~75%) of 6-4PPs was removed within 6 h after UV irradiation (Fig. 1c, Supplementary Fig. 1a). As expected, 6-4PP repair was not observed in GG-NER-deficient *Xpc*^{-/-} MEFs, not even after 24 h. *Rnf111*^{-/-} MEFs displayed an intermediate phenotype; 6 h after UV irradiation 6-4PP removal was severely inhibited, with ~70% of these lesions remaining (Fig. 1c, Supplementary Fig. 1a). Strikingly, 24 h after UV exposure 6-4PP repair was almost completed, suggesting that the NER reaction is not fully blocked, but rather seems to be retarded. This was further corroborated by measuring UDS levels over an increased time window of 9 h instead of 3 h. UDS levels of *Xpc*^{-/-} MEFs remained low, indicative of their full repair deficiency. However, residual UDS levels in *Rnf111*^{-/-} MEFs increased from 40% over 3 h, up to 60–80% after 9 h as compared with WT MEFs (Fig. 1b, Supplementary Fig. 1b). Altogether, these results indicate that although RNF111 is not essential for GG-NER, but it strongly enhances the repair reaction.

RNF111 is required for XPC release from sites of UV damage.

RNF111 ubiquitylates XPC in response to UV exposure²¹. Therefore, the reduced GG-NER capacity in the absence of RNF111 suggests that RNF111-dependent ubiquitylation facilitates GG-NER by regulating XPC function. To further investigate this, we measured XPC-GFP accumulation kinetics at sites of local UV-C laser (266 nm) induced DNA damage (LUD) using quantitative live-cell confocal imaging. Surprisingly, knockdown of RNF111, using two independent siRNAs (Supplementary Fig. 1c) resulted in a twofold increase in XPC-GFP accumulation at LUD (Fig. 2a, Supplementary Fig. 1d). These data argue for an increase in XPC binding to lesions in the absence of RNF111 and suggest an improved DNA damage detection, which is seemingly at odds with the observed reduction in repair capacity in the absence of RNF111. The RNF111-dependent XPC binding properties were further investigated by determining long-term binding of XPC to DNA damage by

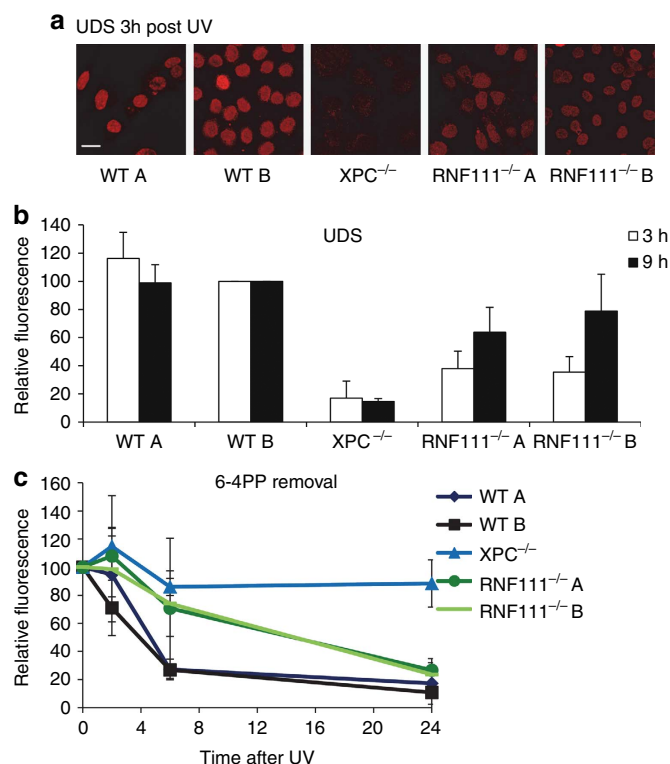


Figure 1 | RNF111 is necessary for efficient GG-NER. (a) Representative pictures of unscheduled DNA synthesis (UDS) of the indicated MEFs, determined by 5-ethynyl-2'-deoxyuridine (EdU) incorporation over 3 h after UV irradiation (16 J m^{-2}). Scale bar, 25 μm . (b) Quantification of UDS levels in MEFs, as determined by EdU incorporation over a time period of 3 or 9 h after UV irradiation (16 J m^{-2}). UDS levels in WT MEFs were set at 100% ($n > 100$ cells per sample, in at least two independent experiment; error bars are the mean \pm s.d.). (c) 6-4PP removal assayed by immunofluorescence, using a 6-4PP specific antibody. The indicated MEFs were UV-irradiated (10 J m^{-2}) and allowed to repair 6-4PPs for the indicated time points. Relative fluorescence directly after UV exposure was set at 100%. ($n > 70$ cells, three independent experiments; error bars are the mean \pm s.d.).

scoring XPC co-localization with a damage marker (anti-CPD) using immunofluorescence (Fig. 2b). At 30 min after local UV irradiation, no difference in co-localization of XPC with LUD was observed. However, at later time points (4, 6 and 8 h) after UV a strikingly higher co-localization with LUD was observed in Rnf111^{-/-} MEFs as compared with WT MEFs (Fig. 2b). Similar results were observed in U2OS cells treated with two different siRNAs targeting RNF111 (Supplementary Fig. 2). In contrast, knockdown of RNF4, another STuBL involved in the mammalian DNA damage response^{25,26}, had no effect on the UV-induced co-localization of XPC with DNA damage (Supplementary Fig. 2), showing the specificity of RNF111 for XPC regulation. This increased XPC accumulation could either be explained by a more stable binding of XPC to DNA damage or by a higher concentration of substrates, as RNF111 loss resulted in slower repair kinetics, or both. To distinguish between these possibilities and to resolve the apparent contradiction between more XPC binding and slower repair, we determined XPC mobility using fluorescence recovery after photobleaching (FRAP) on XPC-GFP in RNF111-depleted cells. The mobility of XPC-GFP was unaffected by RNF111 depletion under unperturbed conditions (Fig. 2c, 0 J m^{-2}), indicating that the probing of DNA by XPC in the absence of UV-lesions is not affected²⁷. On UV exposure (10 J m^{-2}) XPC is engaged in damage recognition, resulting in an

increased XPC-GFP immobilization²⁷. Knockdown of RNF111 resulted in a further increase in XPC-GFP immobilization after UV, as shown by the FRAP curves (Fig. 2c, upper panel) and by plotting of the calculated immobile fractions (Fig. 2c, lower panel). These data suggest that XPC is more strongly associated with damaged DNA in the absence of RNF111, which might be a consequence of increased association (K_{on}) and/or decreased dissociation kinetics (K_{off}). To study whether the K_{off} is affected, we applied inverse FRAP to measure the dissociation of XPC from sites of DNA damage. To this end, LUD was first introduced to locally accumulate XPC-GFP until steady state was reached. Subsequently, the entire nucleus, with exception of the damaged area, was continuously bleached and the loss of fluorescence at the site of damage was measured at regular time intervals (Fig. 2d). Depletion of RNF111 resulted in reduced dissociation kinetics (K_{off}) of XPC-GFP at LUD ($t_{1/2} = 33\text{--}43 \text{ s}$) as compared with control transfected cells ($t_{1/2} = 24 \text{ s}$), indicative of an increased residence time. Altogether our results suggest that RNF111 plays an important role in promoting the release of XPC from damaged DNA. The reduced clearance of XPC from damaged sites may thus explain the increased accumulation of XPC-GFP at LUD and may cause the delayed repair.

RNF111 is essential for efficient XPG and XPF/ERCC1 loading.

Our finding that knockdown of RNF111 results in prolonged binding of XPC to DNA damage provides a good model system to study NER factor handover during the repair reaction and to determine which NER factors depend on XPC release to be incorporated into the NER complex. To this end, we tested whether a panel of NER factors (DDB2, XPB, XPG, XPF and ERCC1) co-localized to LUD 30 min after UV irradiation (60 J m^{-2}), as marked by CPD-photolyase-mCherry²⁸, in RNF111 siRNA-depleted U2OS cells. Co-localization of early factors, like DDB2 (upstream of XPC) and XPB (subunit of TFIIH, directly downstream of XPC) with the DNA damage marker, was not affected by RNF111 knockdown. Interestingly, co-localization of the endonucleases XPG and XPF/ERCC1 with DNA damage was significantly lower (20–50%) in RNF111-depleted cells than in control siRNA-transfected cells (Fig. 3a). In contrast, depletion of RNF4 had no effect on UV-induced co-localization of NER factors with DNA damage (Fig. 3a). To study the *in vivo* binding characteristics of these factors to active NER complexes in the absence of RNF111 in a quantitative manner, we determined the mobility of these proteins by FRAP analysis in RNF111-depleted cells expressing GFP-tagged versions of XPB, XPA, XPG and ERCC1 after UV irradiation. Previous studies have shown that for each of these NER factors a clear UV-induced immobilization could be measured by FRAP^{7,29–31}. Under unperturbed conditions (0 J m^{-2}), no difference in mobility was observed for the indicated NER factors between control and RNF111-depleted cells (Fig. 3b). In contrast, after UV irradiation (10 J m^{-2}) both the XPB and XPA proteins showed a further increased immobilization on RNF111 depletion, similar to what was observed for XPC (Fig. 2c). These results suggest that, like XPC, also XPB and XPA are more associated with DNA damage in the absence of RNF111. This increased association most likely represents longer dwell times of these factors into transiently trapped NER reaction intermediates that cannot finalize the repair reaction due to loss of RNF111. FRAP analysis of XPG-GFP and ERCC1-GFP in cells with reduced RNF111 levels revealed a striking opposite effect shown by a marked decrease in UV-induced immobilization, in line with the immunofluorescence experiments. This strong reduction of UV-induced immobilization likely reflects the inability of these endonucleases to stably integrate into active NER complexes in

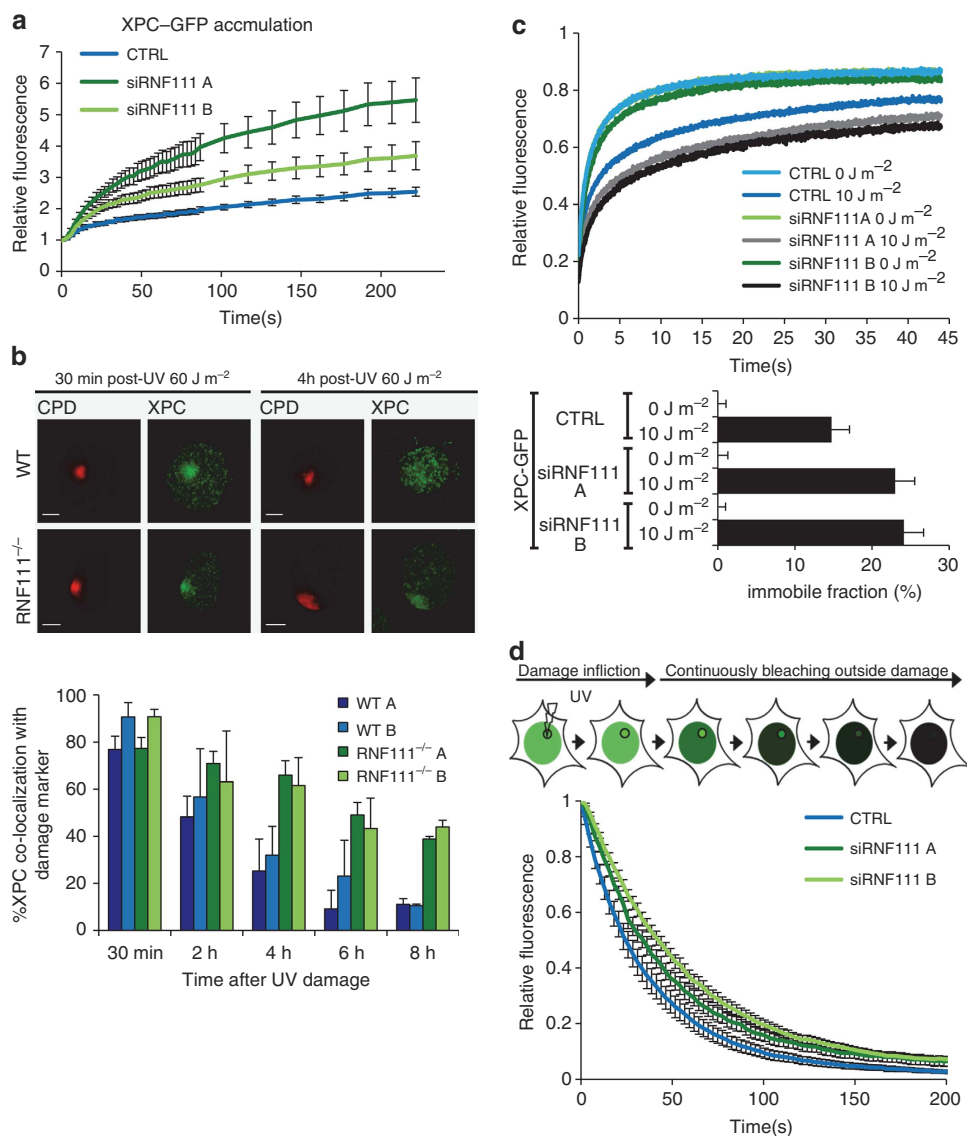


Figure 2 | RNF111 is required for XPC release. (a) Relative XPC-GFP accumulation at sites of LUD in control and RNF111-depleted cells. GFP fluorescence intensity at UV-C laser induced LUD was measured over time using live-cell confocal imaging and quantified to predamage intensity set at 1 at $t = 0$ ($n > 15$ cells per sample, measured in two independent experiments; error bars are the mean $\pm 2 \times$ s.e.m.). (b) Top panel: representative immunofluorescence pictures of co-localization of XPC with CPD at LUD in WT and *Rnf111*^{-/-} MEFs at the indicated time points after UV irradiation (60 J m⁻²) are shown. Scale bars, 5 μ m. Lower panel: quantification of the XPC co-localization with CPD ($n > 50$ cells with LUD were analysed per sample in three independent experiments; error bars are the mean \pm s.d.). (c) Top panel: FRAP analysis of XPC-GFP in mock treated or global UV-irradiated (10 J m⁻²) XP4PA (XPC deficient) cells, on transfection with the indicated siRNA's. XPC-GFP was bleached in a small strip within the nucleus and fluorescence recovery was measured over 45 s and normalized to prebleach intensity ($n = 40$; from two independent experiments error bars are the mean $\pm 2 \times$ s.e.m.). The immobilized fraction (%) = $1 - ((\text{average fluorescence intensity UV-irradiated cells} - \text{the first data point after bleaching}) / (\text{average fluorescence intensity unchallenged cells} - \text{the first data point after bleaching}))$, is plotted in the lower panel. The immobilized fraction was calculated over the last 10 s. (d) Inverse FRAP (iFRAP) analysis of XPC-GFP at LUD. XP4PA cells stably expressing XPC-GFP were transfected with the indicated siRNA's. Seventy-two hours after transfection, cells were locally exposed to a 266-nm UV-C laser. After the accumulation plateau was reached (5 min after exposure) the undamaged part of the nucleus was continuously bleached and fluorescence in the damaged area was monitored. Fluorescence was normalized to prebleach intensity ($n > 15$ cells per sample, measured in two independent experiments; error bars are the mean \pm s.e.m.).

the absence of RNF111 (Fig. 3b). This was further confirmed by the strongly reduced UV-induced accumulation of XPG-GFP and ERCC1-GFP to LUD in living cells on RNF111 depletion, almost to the same extent as observed on siRNA mediated XPA depletion (Fig. 3c). As ERCC1/XPF binding to DNA damage is dependent on the presence of XPG⁹, these data suggest that when XPC remains bound to the initiating NER complex, both XPG and XPF/ERCC1 cannot be efficiently recruited to or stably incorporated in the NER complex.

XPC release and ongoing NER is SUMO and K63-chain dependent. As RNF111 is a STUbL that mediates UV-induced K63-linked ubiquitylation of XPC²¹, we investigated whether K63-linked ubiquitylation is required for XPC release from DNA damage and subsequent recruitment of the NER endonucleases. Towards this goal, siRNA targeting UBC13, the cognate E2-enzyme promoting K63-linked ubiquitylation^{32,33}, was used and XPC co-localization at LUD with CPD as damage marker was scored in U2OS cells at several time points after UV irradiation.

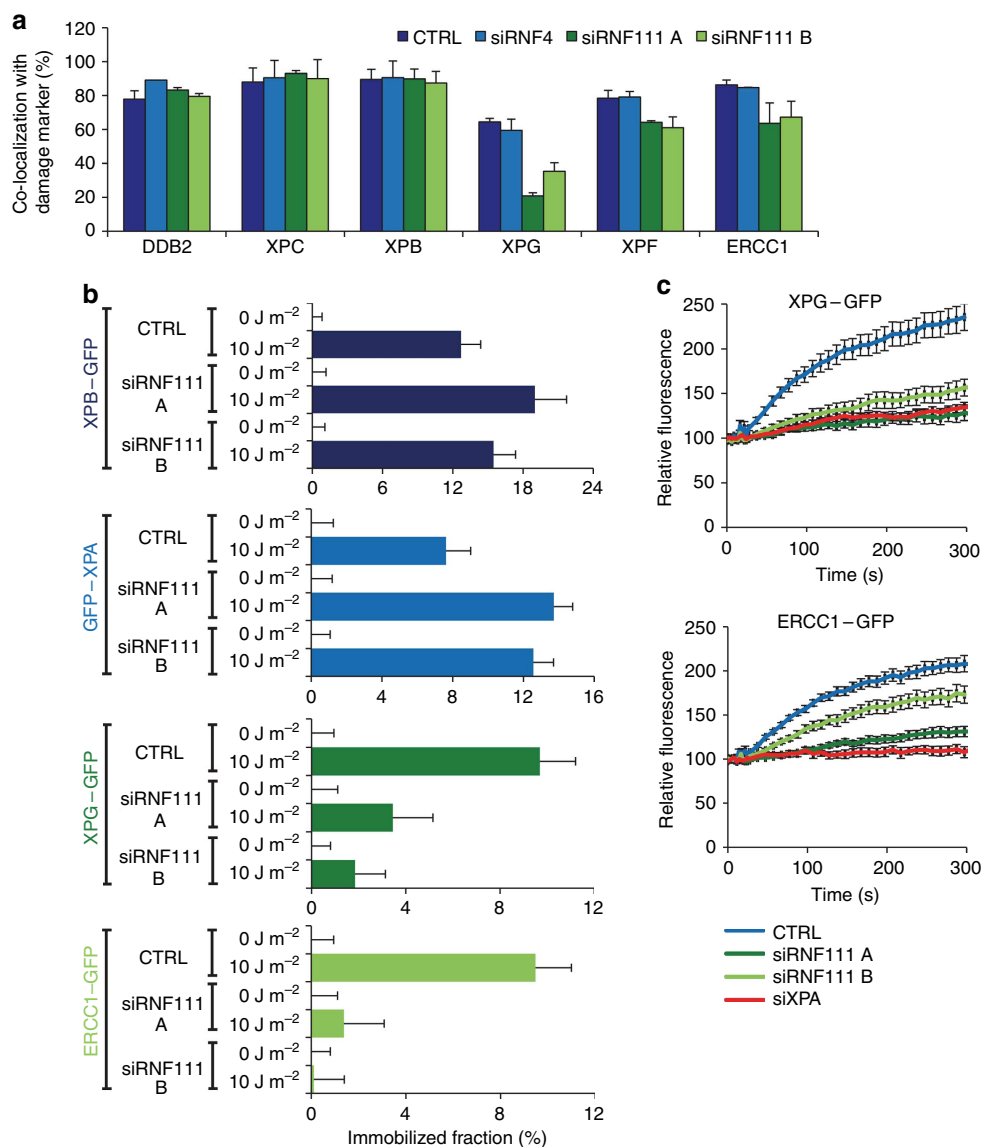


Figure 3 | RNF111 is required for binding of XPG and XPF/ERCC1 to the NER complex. (a) U2OS cells expressing CPD-photolyase-mCherry were transfected with the indicated siRNA's 3 days before the immunofluorescence experiment. Cells were locally UV irradiated (60 J m^{-2}) and immunostained for the indicated proteins 30 min later. The percentage of co-localization with the damage marker CPD-photolyase-mCherry at LUD is plotted in the graph ($n > 50$ cells containing a LUD were scored in at least three independent experiments; error bars are the mean \pm s.d.). (b) The immobilized fraction of XPB-GFP, GFP-XPA, XPG-GFP and ERCC1-GFP as determined by FRAP analysis in mock or UV-treated (10 J m^{-2}) cells on transfection with the indicated siRNA's ($n > 32$ cells from at least two independent experiments; error bars are the mean $\pm 2 \times$ s.e.m.). (c) Cells stably expressing XPG-GFP and ERCC1-GFP transfected with the indicated siRNA's were locally irradiated using a 266-nm UV-C laser. GFP fluorescence intensity at LUD was monitored for 6 min, with 10 s intervals and normalized to predamage values. ($n = 24$ cells from three independent experiments; error bars are the mean \pm s.e.m.).

UBC13 depletion, as confirmed by western blot (Supplementary Fig. 3a), resulted in prolonged XPC co-localization with sites of DNA damage (Fig. 4a, red bars), similar to the observations in $Rnf111^{-/-}$ cells. In contrast, depletion of another E2 conjugating enzyme, UBE2Q2, which is not involved in K63-mediated ubiquitylation³³ had no effect on UV-induced co-localization of XPC with DNA damage (Fig. 4a, light blue bars). RNF111-mediated XPC ubiquitylation is dependent on XPC SUMOylation²¹. Therefore, we depleted UBC9, the E2 conjugating enzyme crucial for SUMOylation³⁴, which indeed also resulted in more XPC co-localization with LUD at later time points (Fig. 4a, orange bars). Moreover, FRAP analysis of XPC-GFP showed that depletion of either UBC9 or UBC13 resulted in an increased UV-induced immobilization (Fig. 4b), to a similar

extent as seen for RNF111 depletion. In addition, FRAP studies on ERCC1-GFP showed a decrease in UV-induced immobilization on depletion of UBC9 or UBC13 (Fig. 4c), indicating that XPC release from damaged DNA and the subsequent stable incorporation of the NER endonucleases into the repair complex is not only dependent on RNF111, but also on SUMOylation and K63-linked ubiquitylation. To address whether the SUMO-dependent ubiquitylation of XPC itself is sufficient to explain the observed effects on the release of XPC and recruitment of the downstream NER endonucleases, we set out to generate an XPC mutant that was refractory to SUMOylation^{20,21}. With this approach, RNF111-mediated XPC ubiquitylation would be inhibited without affecting RNF111 activity towards other putative substrates. Using the GPS-SUMO

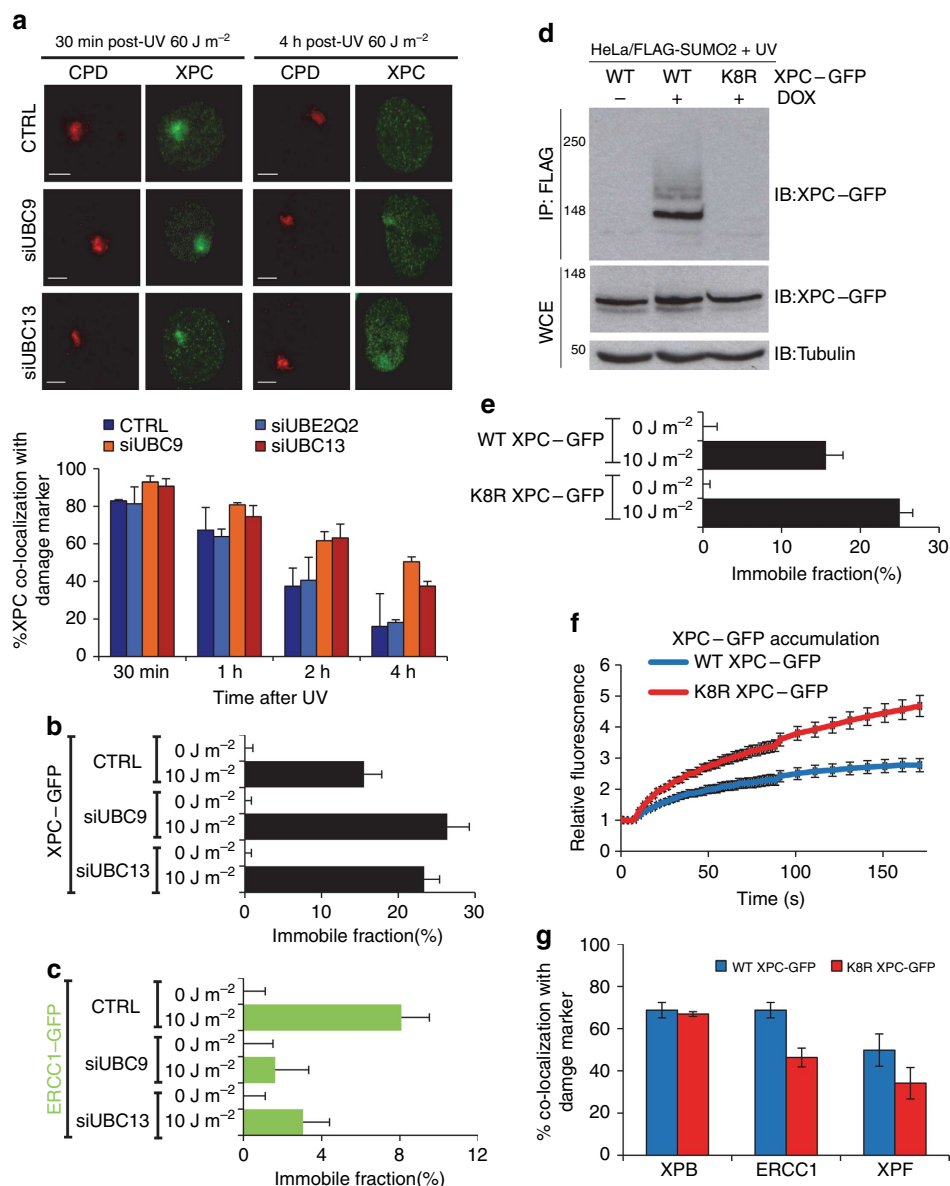


Figure 4 | XPC release is SUMO and K63-ubiquitylation dependent. (a) Top panel: representative pictures of co-localization of XPC with CPD at LUD in U2OS cells transfected with the indicated siRNA's 30 min or 4 h after local UV irradiation (60 J m⁻²) are shown. Scale bar, 5 μm. Bottom panel: quantification of XPC co-localization with the damage marker CPD. ($n \approx 50$ cells containing a LUD were scored per sample in three independent experiments; error bars are the mean \pm s.d.). The immobilized fraction of XPC-GFP (b) or ERCC1-GFP (c) as determined by FRAP analysis in mock or UV-treated (10 J m⁻²) cells depleted by siRNA of UBC9 or UBC13 ($n = 40$ from two experiments; error bars are the mean $\pm 2 \times$ s.e.m.). (d) HeLa/FLAG-SUMO2 cells were transfected with plasmids expressing WT or K8R XPC-GFP, then left untreated or incubated with doxycycline (DOX) to induce FLAG-SUMO2 expression. One hour after UV exposure (16 J m⁻²), cells were lysed under denaturing conditions, and XPC SUMOylation was analysed by immunoblotting of FLAG IPs with GFP antibody. (e) The immobilized fraction of WT XPC-GFP or K8R XPC-GFP as determined by FRAP analysis in mock or UV-treated (10 J m⁻²) cells ($n > 40$ from three experiments; error bars are the mean $\pm 2 \times$ s.e.m.). (f) Cells stably expressing WT XPC-GFP or K8R XPC-GFP were locally irradiated using a 266 nm UV-C laser. GFP fluorescence intensity at UV-C laser-induced LUD was measured over time using live-cell confocal imaging and quantified to predamage intensity set at 1 at $t = 0$ ($n > 25$ cells per sample, measured in two independent experiments; error bars are the mean \pm s.e.m.). (g) XPC deficient XP4PA cells stably expressing WT XPC-GFP or K8R XPC-GFP were locally UV-irradiated (60 J m⁻²) and immunostained for endogenous XPB, ERCC1 and XPF proteins 30 min later. The percentage of co-localization with GFP-XPC at LUD is plotted in the graph ($n > 100$ cells containing a LUD were scored in at two independent experiments; error bars are the mean \pm s.d.).

algorithm³⁵ we identified eight putative SUMOylation sites in XPC (Supplementary Fig. 3b). By mutating each of the eight lysine residues present in these SUMO consensus sites to arginines, we obtained an XPC mutant (K8R XPC-GFP) that could no longer be SUMOylated (Fig. 4d). The K8R XPC-GFP mutant was stably expressed in XPC cells and its mobility and DNA damage kinetics were analysed using live-cell imaging. No

difference in mobility was detected under unperturbed conditions (0 J m⁻²) as determined by FRAP. However, on UV-induced DNA damage (10 J m⁻²) the K8R XPC-GFP was more immobilized than WT XPC-GFP, to a similar magnitude as was observed after depletion of RNF111 or UBC9 (Fig. 4e). In line with this, the K8R XPC mutant showed an approximately twofold increase in accumulation at LUD compared to WT XPC. Finally,

similar to RNF111 depletion, we observed a clear reduction in ERCC1 and XPF accumulation at LUD in K8R XPC–GFP compared with WT XPC–GFP expressing cells (Fig. 4g), while no difference in the localization of XPB was found. Altogether these experiments demonstrate that the XPC release and subsequent binding of the NER endonucleases is dependent on the SUMOylation of XPC.

Discussion

The recent identification of RNF111 as a STUbL involved in UV-induced ubiquitylation of XPC²¹ has added another level of complexity to the ubiquitin-dependent regulation of this DNA damage sensor, as previously also CRL4^{DDB2} was identified as an E3-ligase complex acting on XPC¹⁷. Interestingly, while both ubiquitin ligase activities are required for efficient GG-NER, they may have opposing effects on XPC. Whereas CRL4^{DDB2}-induced ubiquitylation has been suggested to increase XPC DNA-binding affinity *in vitro*¹⁷, we provide evidence that RNF111 and its cognate E2—UBC13—are required for efficient release of XPC from UV-lesions, which permits the progress of the NER reaction. How can XPC ubiquitylation by two different E3 ligases have such a diverse functional outcome? One obvious explanation is that these E3 ligases modify XPC with different types of ubiquitin chains. While RNF111 in cooperation with UBC13 generates K63-linked ubiquitin chains on XPC, the exact type of ubiquitin chains formed by CRL4^{DDB2} is currently unknown. However, in line with the finding that CRL4^{DDB2} autoubiquitylates DDB2 resulting in its subsequent degradation^{36–39}, most CRL4-type ubiquitin ligases promote proteasomal degradation of their substrates^{40,41}, which suggests that CRL4^{DDB2} might form K48-linked ubiquitin chains on XPC. If indeed XPC is ubiquitylated by K48 chains in response to UV

to increase its DNA-binding affinity, other factors may shield or protect it from proteolytic attack. One such candidate is the XPC complex partner RAD23B, which is known to protect XPC from proteasomal degradation, already in non-UV-challenged cells⁴². Other proteins involved in the stabilization of XPC might be the deubiquitylating enzymes OTUD4 and USP7, which were shown to deubiquitylate XPC upon UV-induced DNA damage^{43,44}. It will be interesting to study whether these deubiquitylating enzymes are only involved in the protection of XPC from proteolytic degradation or if they are also important for ubiquitin chain editing on XPC. In this latter scenario, XPC would first be ubiquitylated by CRL4^{DDB2} after which the K48-linked ubiquitin chains might be trimmed down to permit K63-linked ubiquitylation by RNF111 on the same lysines modified by CRL4^{DDB2}, resulting in the subsequent release of XPC from sites of DNA damage.

Intriguingly, the RNF111-mediated ubiquitylation occurs on one of the NER-initiating enzymes, but it affects one of the last NER steps; the loading of the endonucleases XPG and ERCC1/XPF. While we cannot exclude that RNF111 might also target other NER factors downstream of XPC that may contribute to the reduced NER-incision complex assembly, the reduced accumulation of ERCC1 and XPF at sites of UV damage in cells expressing an XPC mutant that cannot be SUMOylated (Fig. 4d–g) strongly suggests that this is caused by the action of RNF111 on XPC. In addition, no UV damage-induced SUMO modification of other NER factors have been described thus far. We therefore propose a model in which chromatin bound, SUMOylated XPC is ubiquitylated by RNF111 on DNA damage²¹, thereby stimulating its release from the NER preincision complex that contains TFIIH and XPA (Fig. 3b). This key step most likely generates better access of XPG or increased stable binding of XPG to the NER preincision complex. In addition, more efficient

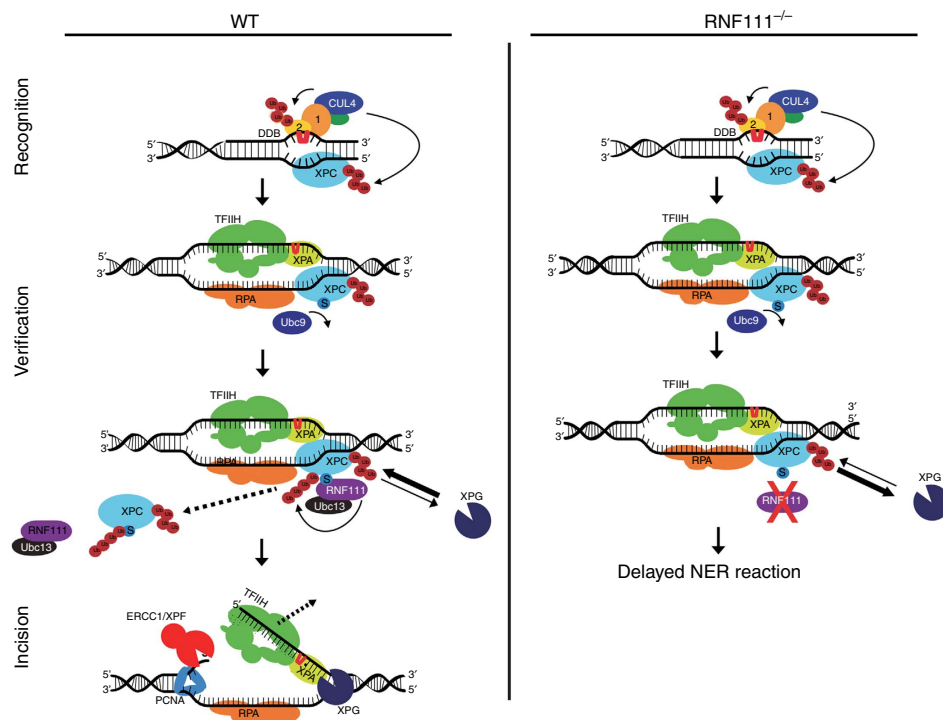


Figure 5 | Proposed model for RNF111-dependent XPC ubiquitylation in controlling NER. In WT cells SUMOylated XPC is ubiquitylated by RNF111, promoting its release from damaged DNA. This RNF111-mediated XPC release facilitates XPG and ERCC1/XPF recruitment, thereby enabling an efficient NER reaction. In RNF111^{-/-} cells, where XPC is not modified by RNF111-dependent K63 ubiquitin chains, XPC remains more stably associated with the preincision NER complex. This interferes with proper loading of XPG, thereby inhibiting the NER reaction. Branched ‘Ub’ represents K48-linked Ub chains; linear ‘Ub’ represents K63-linked Ub chains; ‘S’ represents SUMOylation; ‘1’ and ‘2’ represent DDB1 and DDB2, respectively.

binding of XPG will promote the 5' incision by ERCC1/XPF and progression of the NER reaction (Fig. 5, left panel). In contrast, in the absence of RNF111, damage-bound SUMOylated XPC is not ubiquitylated and remains stably bound to the NER complex, interfering with XPG loading and the subsequent recruitment of ERCC1/XPF, which are required for the excision of the damaged DNA strand by these endonucleases (Fig. 1b; Fig. 5, right panel). The need for XPC release for proper XPG incorporation into the NER complex is in line with *in vitro* experiments showing that on the arrival of RPA and XPG, XPC is released from the NER complex⁴⁵. It should also be noted that the position where XPC is bound, the junction between double-stranded DNA and single-stranded DNA at the strand opposite of the lesion, 3' with respect to the lesion-containing strand¹⁰, is also the site where the XPG endonuclease acts. For this reason of potential steric hindrance, it is logical to assume that XPC must be released before XPG loading.

Further research should uncover whether the ubiquitin-binding UBM domain present in XPG⁴⁶ might play a role in this process. UBM domains have been shown to interact with monoubiquitin and K63-linked, but not K48-linked, chains⁴⁷. This suggests that XPG might be able to interact with the K63-linked ubiquitylated form of XPC, generated by RNF111. In addition to the presence of TFIIF, this interaction could be required for efficient recruitment of XPG and for the subsequent or simultaneous extraction of XPC from the NER preincision complex⁷. Furthermore, it has been shown that XPG constitutively interacts with TFIIF⁸, which may suggest that TFIIF brings XPG into the NER complex. Interestingly however, and in line with earlier observations⁷, our data suggest that XPG is recruited to sites of DNA damage independent of TFIIF as it shows different RNF111-dependent binding kinetics than TFIIF: on RNF111 knockdown XPB is more stably immobilized on sites of DNA damage, whereas XPG immobilization could hardly be detected. However, another possibility is that XPG arrives as part of the TFIIF complex at sites of DNA damage, but will dissociate as long as XPC remains bound to the preincision NER complex.

The dynamic DNA association of XPC²⁷ could give XPG the possibility to compete with XPC for binding to the NER preincision complexes even if XPC release is slowed down in the absence of RNF111-mediated ubiquitylation. This will eventually result in a functional NER reaction, however, at a much slower rate, which could explain the proficient, but strongly delayed, NER phenotype upon RNF111 knockdown (Fig. 1b,c).

On the basis of current knowledge it is expected that the different ubiquitylation events on XPC are regulated in a tightly coordinated manner to ensure that XPC binds and dissociates at the right time and place. Within NER, different—partially overlapping—stages can be recognized, for example, damage recognition and verification, establishment of the preincision complex and final dual incision. All steps before the actual incision are considered to be reversible, but once the incision by ERCC1/XPF is made the process reaches a 'point of no return'¹. We speculate that in response to UV, XPC is first modified by CRL4^{DDB2}, resulting in more stable binding to sites of DNA damage. Subsequently, XPC is SUMOylated and recognized by RNF111, which mediates K63-linked ubiquitylation of XPC to promote its release from the NER complex. This XPC SUMOylation is dependent on the presence of DDB2 and XPA²⁰. As XPA plays an important role during the damage verification step, it is expected that this XPC SUMOylation and its subsequent release occurs only after damage verification by the NER preincision complex (Fig. 5). We propose that RNF111-mediated ubiquitylation of XPC, required for stable integration of XPG, marks a decisive stage in the progression of NER reaction to reach the 'point of no return'.

In summary, we have uncovered a new layer of ubiquitin regulation of the DNA damage recognition step of NER. We propose a first-in/first-out model: the ubiquitylation-driven release of the NER-initiating factor XPC is required to make room for the incorporation of the downstream NER endonucleases. This UBC13 and RNF111-dependent process is required to pass the NER reaction through the successive steps thereby facilitating efficient damage removal. In addition to the regulation by RNF111 and UBC13 as XPC ubiquitylation factors, this process is dependent on SUMOylation mediated by UBC9. This indicates the importance of crosstalk between SUMOylation and ubiquitylation in the regulation of damage recognition. Our findings not only show the importance of precise regulation of damage recognition, but also the regulation of the progress of the NER reaction. Taken together, we conclude that RNF111-mediated ubiquitylation of XPC is a key regulator of NER efficiency. The sequential SUMOylation and differential ubiquitylation of XPC to control the NER reaction might serve as a paradigm for the spatiotemporal regulation of other processes involving different types of sequential post-translational protein modifications.

Methods

Cell culture and treatments. U2OS cells were obtained from the ATTC cell collection, CPD-photolyase-mCherry²⁸ was stably expressed by lentiviral transduction followed by Blasticidin selection. XPC-GFP was stably expressed in sv40 transformed XPC (XP4PA) cells by transfection of XPC-GFP²⁷, XPB-GFP was stably transfected in sv40 transformed XPB (XPCS2BA) cells²⁹, GFP-XPA was expressed in sv40 XPA (XP2OS) cells³⁰ and XPG-GFP was stably transfected in sv40 transformed XPG (XPCS1RO)⁷ cells followed by FACS sorting and G418 selection. All cells above were cultured under standard conditions in DMEM/F10 supplemented with 10% FCS and 1% penicillin-streptomycin at 37 °C and 5% CO₂. WT (clone A littermate of Xpc^{-/-} and clone B littermate of Rnf111^{-/-}), Xpc^{-/-} (ref. 48) and two independent clones of Rnf111^{-/-} knockout MEFs, indicated as A and B²³ were grown in DMEM/F10 containing 10% FCS, 1% PS and 1% non-essential amino acids. HeLa cells stably expressing FLAG-SUMO2 in a doxycycline-inducible manner were generated by cotransfection of HeLa/FRT/TRex cells (Invitrogen) with pcDNA5/FRT/TO-3 × FLAG-SUMO2 and pOG44 followed by selection with 200 µg ml⁻¹ Hygromycin B^{21,49}.

For global and local UV irradiation cells were treated with a UV-C germicidal lamp (254 nm, Philips) at the indicated dose⁵⁰. Local UV irradiation was applied through an isopore membrane filter (Millipore), containing 5-µm pores.

siRNA transfections were performed using hiperfect (Qiagen) or RNAiMax (Invitrogen) 2–3 days before the described experiments according to manufacturer's protocol. siRNA target sequence used were: CTRL (Thermo Scientific Dharmacon, D10-001210-05), RNF111(A) (5'-GGUAUUAUUGCAGAGGAA-3'), RNF111(B) (Invitrogen, HSS182646), RNF4 (5'-GAAUGGACGUCUCAUC GUU-3'), UBC9 (5'-GGGAUUGGUUGGCAAGAA-3'), UBC13 (5'-GAGCAUG GACUAGGCUAUA-3'), UBE2Q2 (Thermo Scientific Dharmacon, L-008326-01) and XPA (5'-CUGAUGAUAAACACAAGCUUAUU-3').

Construction and expression of ERCC1-GFP and K8R XPC-GFP. ERCC1-GFP was PCR amplified from pBluescript containing ERCC1-GFP-6xHis-HA using the following primers: fw 5'-CCACATGGACCCTGGGAAGGACAAAG-3' rv 5'-CTACTTGTACAGCTCGTCCATGCCGA-3', cloned into pENTR-D-TOPO (Invitrogen) and recombined into the pLenti PGK Blast Destination vector (Addgene, plasmid 19065) using the Gateway LR Clonase II Enzyme Mix (Invitrogen). Third-generation lentivirus was produced in HEK293T cells and used to generate U2OS stably expressing ERCC1-GFP by Blasticidin selection. K8R XPC-GFP construct was generated by fusion PCR performed by Baseclear (Leiden, The Netherlands) and was sequence verified.

Unscheduled DNA synthesis. Fluorescent-based UDS was performed as follows: in short, MEFs were seeded on 24-mm coverslips 3 days before the UDS assay and cultured in serum-free medium to reduce the number of S-phase cells. Cells were UV irradiated with 16 J m⁻² and incubated for 3 or 9 h in medium containing 5-ethynyl-2'-deoxyuridine (EdU; Invitrogen). Subsequently, cells were washed with PBS and fixed with 3.7% formaldehyde. Cells were permeabilized with 0.5% Triton in PBS and 5-ethynyl-2'-deoxyuridine incorporation was visualized using Click-it Alexa Fluor 594 according to manufacturer's instructions (Invitrogen). Images were obtained using a LSM700 microscope equipped with a 63 × oil Plan-apochromat 1.4 numerical aperture (NA) oil immersion lens (Carl Zeiss Micro imaging Inc.). Repair capacity, quantified in at least 100 cells

by determining the overall nuclear fluorescence using ImageJ software, was normalized to fluorescence in WT cells, which was set at 100% (ref. 51).

Live-cell confocal laser-scanning microscopy. For local UV-C irradiation in living cells, a 2 mW pulsed (7.8 kHz) diode pumped solid-state laser emitting at 266 nm (Rapp Opto Electronic, Hamburg GmbH) was connected to a Leica SP5 laser-scanning confocal microscope as described^{52,53}. Cells were grown on quartz coverslips and imaged and irradiated at the indicated dose using an Ultrafluor quartz 100 ×, 1.35 NA glycerol immersion lens (Carl Zeiss) at 37 °C and 5% CO₂. Imaging medium was the same as culture medium. Images were acquired using the LAS AF software (Leica). Accumulation kinetics were quantified using FIJI image analysis software. Resulting curves were normalized to the relative fluorescence before irradiation and corrected for background values. To determine the dissociation kinetics of XPC from damaged DNA, the undamaged part of the nucleus was continuously bleached and the fluorescence decrease in the local damage was measured.

For FRAP analysis⁵⁴, a narrow strip spanning the nucleus (512 × 16 pixels at zoom 8 was bleached for 100 ms using 100% of the power of a 488-nm laser. Recovery of fluorescence in the strip was monitored every 22 ms at 2% power of a 488-nm laser until fluorescence reached a steady-state level. All Frap data were acquired on a Leica SP5 laser-scanning confocal microscope equipped with a 63 × 1.4 NA HCX PL APO CS oil immersion objective and normalized to the average prebleach fluorescence after subtraction of the background signal. At least two independent experiments of > 12 cells were performed for each condition. To determine the immobile fraction (F_{imm}) from the FRAP measurements, we renormalized the data, using the fluorescence intensity recorded immediately after bleaching (I_0) and the average fluorescence between 35 and 45 s after the start of the FRAP experiment (once recovery is complete) from the unchallenged cells ($I_{\text{final, unc}}$) and UV-irradiated cells ($I_{\text{final, UV}}$) and using the formula: $F_{\text{imm}} = 1 - (I_{\text{final, UV}} - I_0) / (I_{\text{final, unc}} - I_0)$.

Western blot. Cells were collected by scraping in 200 μl 2 × sample buffer and boiled at 98 °C for 3 min. Lysates were separated by SDS-PAGE and transferred to a PVDF membrane (0.45 μm). Membranes were blocked with 5% milk in PBS for 1 h at room temperature and incubated with primary antibodies against RNF111 (H00054778-M05, Abnova), UBC9 (sc-5231, Santa Cruz Biotechnology), UBC13 (ab38795, Abcam) and Tubulin (T5286, Sigma Aldrich). Membranes were washed five times for 5 min with PBS containing 0.05% Tween and incubated with secondary antibodies from LI-COR to visualize antibody complexes with the Odyssey CLx Infrared Imaging System (LI-COR Biosciences). Uncropped scan of the western blots depicted in Fig. 4d can be found in Supplementary Fig. 3c.

Immunofluorescence. Cells were grown on 24-mm coverslips and fixed using 2% paraformaldehyde supplemented with triton X-100. For XPG stainings, cells were fixed with 2% paraformaldehyde. Subsequently cells were permeabilized with PBS containing 0.1% triton X-100 and washed with PBS containing 0.15% glycine and 0.5% BSA. To visualize CPD or 6-4PP, nuclear DNA was denatured by incubation with 0.07 M NaOH for 5 min at room temperature. Coverslips were washed with PBS containing 0.15% glycine and 0.5% BSA and incubated with primary antibodies for 1–2 h at room temperature. Cells were washed three times and two times for 10 min with 0.1% triton X-100 and once with PBS containing 0.15% glycine and 0.5% BSA. To visualize primary antibodies coverslips were incubated for 1 h with secondary antibodies labelled with ALEXA fluorochromes 488 or 555 (Invitrogen). Again cells were washed with 0.1% Triton X-100 and PBS⁺. Subsequently coverslips were embedded in Dapi Vectashield mounting medium (Vector Laboratories). Images were obtained using a LSM700 microscope equipped with a 63 × oil Plan-apochromat 1.4 NA oil immersion lens (Carl Zeiss Microimaging Inc.). The following primary antibodies were used: anti-CPD (1:1,000; TDM-2; MBL International), anti-DDB2 (1:1,000; MBS120183 MyBioSource), anti-XPC (1:200; fraction 5), anti-TFIIH p89 (1:1,000; S19; Santa Cruz), anti-XPG (1:400; 8H7; Thermo Scientific), anti-XPF (1:100; 3F2, Santa Cruz) and anti-ERCC1 (1:200; D10; Santa Cruz).

Quantification of 6-4PP removal by immunofluorescence. MEFs were cultured to 80% confluence on 24-mm coverslips and exposed to global UV irradiation (10 J m⁻²). Cells were fixed after various time points and immunostained with anti-6-4pp (1:1,000; 64M-2; Cosmo Bio), as described above. Images were obtained using a Zeiss LSM 510 META confocal microscope equipped with a 63 × oil Plan-apochromat 1.4 NA oil immersion lens. 6-4PP levels were quantified in at least 70 cells per sample by measuring the overall nuclear fluorescence using ImageJ software, which was set at 100% for 0 h after UV irradiation.

References

- Martijn, J. A., Lans, H., Vermeulen, W. & Hoeijmakers, J. H. Understanding nucleotide excision repair and its roles in cancer and ageing. *Nat. Rev. Mol. Cell Biol.* **15**, 465–481 (2014).
- Yokoi, M. *et al.* The xeroderma pigmentosum group C protein complex XPC-HR23B plays an important role in the recruitment of transcription factor IIH to damaged DNA. *J. Biol. Chem.* **275**, 9870–9875 (2000).
- Volker, M. *et al.* Sequential assembly of the nucleotide excision repair factors in vivo. *Mol. Cell* **8**, 213–224 (2001).
- Camenisch, U., Dip, R., Schumacher, S. B., Schuler, B. & Naegeli, H. Recognition of helical kinks by xeroderma pigmentosum group A protein triggers DNA excision repair. *Nat. Struct. Mol. Biol.* **13**, 278–284 (2006).
- Sugasawa, K., Akagi, J., Nishi, R., Iwai, S. & Hanaoka, F. Two-step recognition of DNA damage for mammalian nucleotide excision repair: directional binding of the XPC complex and DNA strand scanning. *Mol. Cell* **36**, 642–653 (2009).
- de Laat, W. L. *et al.* DNA-binding polarity of human replication protein A positions nucleases in nucleotide excision repair. *Genes Dev.* **12**, 2598–2609 (1998).
- Zotter, A. *et al.* Recruitment of the nucleotide excision repair endonuclease XPG to sites of UV-induced dna damage depends on functional TFIIH. *Mol. Cell Biol.* **26**, 8868–8879 (2006).
- Ito, S. *et al.* XPG stabilizes TFIIH, allowing transactivation of nuclear receptors: implications for Cockayne syndrome in XP-G/CS patients. *Mol. Cell* **26**, 231–243 (2007).
- Staresinic, L. *et al.* Coordination of dual incision and repair synthesis in human nucleotide excision repair. *EMBO J.* **28**, 1111–1120 (2009).
- Min, J. H. & Pavletich, N. P. Recognition of DNA damage by the Rad4 nucleotide excision repair protein. *Nature* **449**, 570–575 (2007).
- Masutani, C. *et al.* Purification and cloning of a nucleotide excision repair complex involving the xeroderma pigmentosum group C protein and a human homologue of yeast RAD23. *EMBO J.* **13**, 1831–1843 (1994).
- Araki, M. *et al.* Centrosome protein centrin 2/caltractin 1 is part of the xeroderma pigmentosum group C complex that initiates global genome nucleotide excision repair. *J. Biol. Chem.* **276**, 18665–18672 (2001).
- Wakasugi, M. *et al.* DDB accumulates at DNA damage sites immediately after UV irradiation and directly stimulates nucleotide excision repair. *J. Biol. Chem.* **277**, 1637–1640 (2002).
- Scrima, A. *et al.* Detecting UV-lesions in the genome: The modular CRL4 ubiquitin ligase does it best! *FEBS Lett.* **585**, 2818–2825 (2011).
- Groisman, R. *et al.* The ubiquitin ligase activity in the DDB2 and CSA complexes is differentially regulated by the COP9 signalosome in response to DNA damage. *Cell* **113**, 357–367 (2003).
- Kulathu, Y. & Komander, D. Atypical ubiquitylation—the unexplored world of polyubiquitin beyond Lys48 and Lys63 linkages. *Nat. Rev. Mol. Cell Biol.* **13**, 508–523 (2012).
- Sugasawa, K. *et al.* UV-induced ubiquitylation of XPC protein mediated by UV-DDB-ubiquitin ligase complex. *Cell* **121**, 387–400 (2005).
- Silver, H. R., Nissley, J. A., Reed, S. H., Hou, Y. M. & Johnson, E. S. A role for SUMO in nucleotide excision repair. *DNA Repair (Amst)* **10**, 1243–1251 (2011).
- Wang, Q. E. *et al.* Ubiquitylation-independent degradation of Xeroderma pigmentosum group C protein is required for efficient nucleotide excision repair. *Nucleic Acids Res.* **35**, 5338–5350 (2007).
- Wang, Q. E. *et al.* DNA repair factor XPC is modified by SUMO-1 and ubiquitin following UV irradiation. *Nucleic Acids Res.* **33**, 4023–4034 (2005).
- Poulsen, S. L. *et al.* RNF111/Arkadia is a SUMO-targeted ubiquitin ligase that facilitates the DNA damage response. *J. Cell Biol.* **201**, 797–807 (2013).
- Episkopou, V. *et al.* Induction of the mammalian node requires Arkadia function in the extraembryonic lineages. *Nature* **410**, 825–830 (2001).
- Mavrakis, K. J. *et al.* Arkadia enhances Nodal/TGF-β signaling by coupling phospho-Smad2/3 activity and turnover. *PLoS Biol.* **5**, e67 (2007).
- van Cuijk, L., Vermeulen, W. & Marteijn, J. A. Ubiquitin at work: the ubiquitous regulation of the damage recognition step of NER. *Exp. Cell Res.* **329**, 101–109 (2014).
- Galanty, Y., Belotserkovskaya, R., Coates, J. & Jackson, S. P. RNF4, a SUMO-targeted ubiquitin E3 ligase, promotes DNA double-strand break repair. *Genes Dev.* **26**, 1179–1195 (2012).
- Yin, Y. *et al.* SUMO-targeted ubiquitin E3 ligase RNF4 is required for the response of human cells to DNA damage. *Genes Dev.* **26**, 1196–1208 (2012).
- Hoogstraten, D. *et al.* Versatile DNA damage detection by the global genome nucleotide excision repair protein XPC. *J. Cell Sci.* **121**, 2850–2859 (2008).
- Aydin, O. Z. *et al.* Human ISWI complexes are targeted by SMARCA5 ATPase and SLIDE domains to help resolve lesion-stalled transcription. *Nucleic Acids Res.* **42**, 8473–8485 (2014).
- Hoogstraten, D. *et al.* Rapid switching of TFIIH between RNA polymerase I and II transcription and DNA repair in vivo. *Mol. Cell* **10**, 1163–1174 (2002).
- Rademakers, S. *et al.* Xeroderma pigmentosum group A protein loads as a separate factor onto DNA lesions. *Mol. Cell Biol.* **23**, 5755–5767 (2003).
- Houtsmuller, A. B. *et al.* Action of DNA repair endonuclease ERCC1/XPF in living cells. *Science* **284**, 958–961 (1999).
- Komander, D. & Rape, M. The ubiquitin code. *Annu. Rev. Biochem.* **81**, 203–229 (2012).
- David, Y., Ziv, T., Admon, A. & Navon, A. The E2 ubiquitin-conjugating enzymes direct polyubiquitination to preferred lysines. *J. Biol. Chem.* **285**, 8595–8604 (2010).

34. Vertegaal, A. C. Small ubiquitin-related modifiers in chains. *Biochem. Soc. Trans.* **35**, 1422–1423 (2007).
35. Zhao, Q. *et al.* GPS-SUMO: a tool for the prediction of sumoylation sites and SUMO-interaction motifs. *Nucleic Acids Res.* **42**, W325–W330 (2014).
36. Chen, X., Zhang, Y., Douglas, L. & Zhou, P. UV-damaged DNA-binding proteins are targets of CUL4A-mediated ubiquitination and degradation. *J. Biol. Chem.* **276**, 48175–48182 (2001).
37. Nag, A., Bondar, T., Shiv, S. & Raychaudhuri, P. The xeroderma pigmentosum group E gene product DDB2 is a specific target of cullin 4A in mammalian cells. *Mol. Cell Biol.* **21**, 6738–6747 (2001).
38. Ropic-Otrin, V., McLenigan, M. P., Bisi, D. C., Gonzalez, M. & Levine, A. S. Sequential binding of UV DNA damage binding factor and degradation of the p48 subunit as early events after UV irradiation. *Nucleic Acids Res.* **30**, 2588–2598 (2002).
39. Puumalainen, M. R. *et al.* Chromatin retention of DNA damage sensors DDB2 and XPC through loss of p97 segregase causes genotoxicity. *Nat. Commun.* **5**, 3695 (2014).
40. Hannah, J. & Zhou, P. Regulation of DNA damage response pathways by the cullin-RING ubiquitin ligases. *DNA Repair (Amst)* **8**, 536–543 (2009).
41. Higa, L. A. & Zhang, H. Stealing the spotlight: CUL4-DDB1 ubiquitin ligase docks WD40-repeat proteins to destroy. *Cell Div.* **2**, 5 (2007).
42. Ng, J. M. *et al.* A novel regulation mechanism of DNA repair by damage-induced and RAD23-dependent stabilization of xeroderma pigmentosum group C protein. *Genes Dev.* **17**, 1630–1645 (2003).
43. He, J. *et al.* Ubiquitin-specific protease 7 regulates nucleotide excision repair through deubiquitinating XPC protein and preventing XPC protein from undergoing UV light-induced and VCP/p97 protein-regulated proteolysis. *J. Biol. Chem.* **289**, 27278–27289 (2014).
44. Lubin, A., Zhang, L., Chen, H., White, V. M. & Gong, F. A human XPC protein interactome—a resource. *Int. J. Mol. Sci.* **15**, 141–158 (2014).
45. Riedl, T., Hanaoka, F. & Egly, J. M. The comings and goings of nucleotide excision repair factors on damaged DNA. *EMBO J.* **22**, 5293–5303 (2003).
46. Fagbemi, A. F., Orelli, B. & Scharer, O. D. Regulation of endonuclease activity in human nucleotide excision repair. *DNA Repair (Amst)* **10**, 722–729 (2011).
47. Burschowsky, D. *et al.* Structural analysis of the conserved ubiquitin-binding motifs (UBMs) of the translesion polymerase ι in complex with ubiquitin. *J. Biol. Chem.* **286**, 1364–1373 (2011).
48. Sands, A. T., Abuin, A., Sanchez, A., Conti, C. J. & Bradley, A. High susceptibility to ultraviolet-induced carcinogenesis in mice lacking XPC. *Nature* **377**, 162–165 (1995).
49. Danielsen, J. R. *et al.* DNA damage-inducible SUMOylation of HERC2 promotes RNF8 binding via a novel SUMO-binding Zinc finger. *J. Cell Biol.* **197**, 179–187 (2012).
50. Martejijn, J. A. *et al.* Nucleotide excision repair-induced H2A ubiquitination is dependent on MDC1 and RNF8 and reveals a universal DNA damage response. *J. Cell Biol.* **186**, 835–847 (2009).
51. Nakazawa, Y., Yamashita, S., Lehmann, A. R. & Ogi, T. A semi-automated non-radioactive system for measuring recovery of RNA synthesis and unscheduled DNA synthesis using ethynyluracil derivatives. *DNA Repair (Amst)* **9**, 506–516 (2010).
52. Schwertman, P. *et al.* UV-sensitive syndrome protein UVSSA recruits USP7 to regulate transcription-coupled repair. *Nat. Genet.* **44**, 598–602 (2012).
53. Dinant, C. *et al.* Activation of multiple DNA repair pathways by sub-nuclear damage induction methods. *J. Cell Sci.* **120**, 2731–2740 (2007).
54. Houtsmuller, A. B. & Vermeulen, W. Macromolecular dynamics in living cell nuclei revealed by fluorescence redistribution after photobleaching. *Histochem. Cell Biol.* **115**, 13–21 (2001).

Acknowledgements

We thank Dr V. Episkopou for providing RNF111^{-/-} primary mouse fibroblasts. This work was supported by the Dutch Organization for Scientific Research ZonMW TOP Grants (912.08.031 and 912.12.132), Dutch Organization for Scientific Research ALW VIDI grant (846.13.004), Horizon Zenith (935.11.042), Dutch Science Organization (NWO), Chemical Sciences (CW), ECHO.12.B1.043, European Research Council Advanced Grant (340988-ERC-ID), FP7 Marie Curie International Training Network aDDress and Erasmus MC fellowship.

Author contributions

L.v.C. and G.J.v.B. performed the majority of the experiments, Y.T. and R.C.J. performed the experiments on the K8R XPC mutant. S.P. performed SUMOylation assays, A.F.T. performed FACS sorting experiments. M.S. and H.L. performed cloning of mCherry Photolyase and ERCC1-GFP. N.M., A.B.H., W.V. and J.A.M. designed the experiments, analysed the data and wrote the manuscript. All authors reviewed the manuscript.

Additional information

Supplementary Information accompanies this paper at <http://www.nature.com/naturecommunications>

Competing financial interests: The authors declare no competing financial interest.

Reprints and permission information is available online at <http://npg.nature.com/reprintsandpermissions/>

How to cite this article: van Cuijk, L. *et al.* SUMO and ubiquitin-dependent XPC exchange drives nucleotide excision repair. *Nat. Commun.* 6:7499 doi: 10.1038/ncomms8499 (2015).



This work is licensed under a Creative Commons Attribution 4.0 International License. The images or other third party material in this article are included in the article's Creative Commons license, unless indicated otherwise in the credit line; if the material is not included under the Creative Commons license, users will need to obtain permission from the license holder to reproduce the material. To view a copy of this license, visit <http://creativecommons.org/licenses/by/4.0/>