

RESEARCH

Open Access

A newly high alkaline lipase: an ideal choice for application in detergent formulations

Slim Cherif*, Sami Mnif, Fatma Hadrich, Slim Abdelkafi and Sami Sayadi

Abstract

Background: Bacterial lipases received much attention for their substrate specificity and their ability to function in extreme environments (pH, temperature...). Many staphylococci produced lipases which were released into the culture medium. Reports of thermostable lipases from *Staphylococcus* sp. and active in alkaline conditions are not previously described.

Results: A newly soil-isolated *Staphylococcus* sp. strain ESW secretes an induced lipase in the culture medium. The effects of temperature, pH and various components in a detergent on the activity and stability of *Staphylococcus* sp. lipase (SL1) were studied in a preliminary evaluation for use in detergent formulation solutions. The enzyme was highly active over a wide range of pH from 9.0 to 13.0, with an optimum at pH 12.0. The relative activity at pH 13.0 was about 60% of that obtained at pH 12.0. It exhibited maximal activity at 60°C. This novel lipase, showed extreme stability towards non-ionic and anionic surfactants after pre-incubation for 1 h at 40°C, and relative stability towards oxidizing agents. Additionally, the crude enzyme showed excellent stability and compatibility with various commercial solid and liquid detergents.

Conclusions: These properties added to the high activity in high alkaline pH make this novel lipase an ideal choice for application in detergent formulations.

Background

Lipases (EC 3.1.1.3) represent an important group of biotechnologically valuable enzymes [1-3]. They are widely distributed in nature. Although lipases have been found in many species of animals, plants, bacteria, yeast, and fungi, the enzymes from microorganisms are the most interesting because of their potential applications in various industries such as food, dairy, pharmaceutical, detergents, textile, biodiesel, and cosmetic industries and in synthesis of fine chemicals, agrochemicals, and new polymeric materials [4-6]. Detergent industries are the primary consumers of enzymes, in terms of both volume and value [7]. The use of enzymes in detergent formulations enhances the detergents ability to remove tough stains and making the detergent environmentally safe. Nowadays, many laundry-detergent products contain cocktails of enzymes including proteases, amylases, cellulases, and lipases [8]. As a detergent additive, the

increasing usage of alkaline lipase is mainly due to its affiliation with the nonphosphate detergents. Ideally, alkaline lipases in a detergent should have high activity and stability over a broad range of temperature and pH, and should also be compatible with different components in a detergent including metal ions, surfactants and oxidants [9]. Bacterial lipases received much attention for their substrate specificity and their ability to function in extreme environments. Many staphylococci produce lipases which are released into the culture medium. Reports of thermostable lipases from *Staphylococcus* sp. and active in alkaline conditions are not previously described. Also, practical applications of staphylococcal enzymes may be limited due to relatively lower stabilities and catalytic activities under conditions that characterise industrial processes: high temperatures, extremes of pH values or non-aqueous solvents. In the past years, intense efforts have been focused on the engineering of enzymes with altered properties or better performance for practical applications. Therefore, screening of new microorganisms with lipolytic activities could facilitate the discovery of novel lipases. Recently we

* Correspondence: slimcherif_enis@yahoo.fr

Laboratoire des Bioprocédés Environnementaux, Pôle d'Excellence Régional (PER, AUF), Centre de Biotechnologie de Sfax, Université de Sfax, B.P. "1177", Sfax 3018, Tunisia

isolated and optimized the production of lipase from a newly *staphylococcus* sp strain ESW (unpublished data). After optimization of culture conditions and medium composition, biochemical properties of crude lipase were investigated. Within this context, we report the characterisation of a thermoactive, alkaline and detergent-stable lipase (SL1) from a newly isolated *staphylococcus* sp strain ESW, and investigate its compatibility with various surfactants, oxidizing agents, commercial liquid and solid detergents to evaluate its potential for detergent formulation.

Methods

Chemicals

Tributyrin (99%, puriss) and benzamidine were from Fluk (Buchs, Switzerland); tripropionin (99%, GC) was from Jansen (Pantin, France); phosphatidylcholine, sodium deoxycholic acid (NaDC), sodium taurodeoxycholic acid (NaTDC), Tween 80, yeast extract and ethylene diamine tetraacetic acid (EDTA) were from Sigma Chemicals (St. Louis, USA); β -mercaptoethanol was from Merck (Darmstadt, Germany); all other detergents used (Ariel, Axion and Omino Bianco) were purchased locally; gum Arabic was from Mayaud Baker LTD (Dagenham, United Kingdom); pH-stat was from Metrohm (Zofingen, Switzerland).

Screening of lipolytic microorganisms

Initial screening of lipolytic microorganisms from various biotopes was carried out using a plate assay in a medium containing triacylglycerol and the fluorescent dye Rhodamine B [10,11]. The solid medium contains 1% olive oil, 1% nutrient broth, 1% NaCl, 1.5 g agar and 1% Rhodamine B. The culture plates were incubated at 37°C, and colonies giving orange fluorescence halos around them, upon UV irradiation, were regarded as putative lipase producers [12]. After extensive screening of lipase producers, only one bacterial colony, isolated from an hydrocarbure contaminated soil continued to give a positive signal when commercial detergent (1%) was added to the solid medium described above. The identification of this strain has been kindly determined by Dr. Abdelhafedh Dhouib (Centre de biotechnologie de Sfax, Tunisia). The biochemical properties and the morphological aspect of this microorganism showed 100% identity to *Staphylococcus* strain.

Media and culture conditions

Staphylococcus sp. was incubated overnight at 37°C and 200 rpm in 1-liter-shaking flasks with 100 mL of Luria-Bertani broth medium composed of (g/L): peptone, 10.0; yeast extract, 5.0; NaCl, 5.0; 1% olive oil; pH 7.0. (medium A). Overnight *Staphylococcus* sp. cultures used as inocula were cultivated in 1-liter shaking flasks with 100

ml of the medium A supplemented with 1% olive oil (medium B). The culture was incubated aerobically during 36 h on a rotary shaker set at 160 rpm and at a temperature of 37°C. The cultures were centrifuged at 12 000 rpm for 15 min at 4°C, and the cell-free supernatants were used for estimation of lipase activity. Growth was followed by measuring the cultures optical density (OD) at 600 nm.

Lipase activity determination

The lipase activity was measured titrimetrically at pH 12 and 60°C with a pH-stat under standard conditions using tributyrin (0.25 mL) in 30 ml of 2.5 mM Tris-HCl pH 12, 2 mM CaCl₂, 1 mM NaDC or olive oil emulsion (10 mL in 20 mL of 9% NaCl pH 12, 2 mM CaCl₂, 2 mM NaDC) as substrate. Lipase activity was also measured at pH 7 and 37°C using TC₃ as substrate (0.25 mL TC₃) in 30 mL of 2.5 mM phosphate buffer pH 7, 2 mM CaCl₂. The olive oil emulsion was obtained by mixing (3 × 30 s in a Waring blender) 10 mL of olive oil in 90 ml of 10% GA. When measuring SL1 lipase activity in the absence of CaCl₂, EDTA or EGTA was added to the lipolytic system. Lipolytic activity was expressed as units. One unit corresponds to 1 μ mol of fatty acid released per minute.

Determination of substrate specificities

Activity of the crude lipase towards different triacylglycerols was determined by pH-stat assay under optimal conditions (pH 12.0 and 60°C). The triacylglycerols triacetin (TC₂), tripropionin (TC₃), tributyrin (TC₄), triolein (TC₈), and triolein (C₁₈) at a final concentration of 10 mM. The triolein was emulsified immediately before use in 10% gum Arabic solution as described previously [13].

Effect of pH and temperature on SL1 activity and stability

SL1 activity was tested in various buffers at different pH (5-13) at 60°C. The pH stability of the lipase was determined by incubating the enzyme at different pH (3-12) for 24 h at room temperature. The residual activity was determined, after centrifugation, under standard assay method [14].

The optimum temperature for the SL1 activity was determined by carrying out the enzyme assay at different temperatures (25-65°C) at pH 12. The effect of temperature on lipase stability was determined by incubating the enzyme solution at different temperatures (30-60°C) for 60 min. The residual activity was determined, after centrifugation, under standard assay method.

Effects of metal ions on enzyme activity

The effect of various metal ions on lipase activity was investigated by adding divalent metal ions (Ca²⁺, Mn²⁺,

Zn²⁺, Cu²⁺, Ba²⁺, Mg²⁺) to the reaction mixture. The activity of the crude enzyme without metallic ions was considered as 100%.

Effect of surfactants and detergents on enzyme stability

The suitability of *Staphylococcus* sp crude enzyme as a detergent additive was determined by testing its stability in the presence of some surfactants such as SDS (sodium dodecyl sulphate), Triton X-100, Tween 20, and oxidizing agents such as hydrogen peroxide (H₂O₂) and sodium perborate (NaBO₃). Crude enzyme containing alkaline lipase, at 15 U/mL was incubated with different additives for 1 h at 40°C and then the residual enzyme activities were determined under standard assay conditions. The activity of the crude enzyme, incubated under similar conditions without any additive was taken as 100%. The compatibility of the ESW enzymatic preparation with commercial solid and liquid laundry detergents was also studied. The solid detergents tested were Dixan (Henkel, Spain), Nadhif (Henkel-Alki, Tunisia), Ariel (Procter and Gamble, Switzerland) and Axion (Colgate-Palmolive, France). The liquid detergents tested were Dixan (Henkel, Spain), Nadhif (Henkel-Alki, Tunisia) and Lav+ (Best LAV, Tunisia). Solid detergents were diluted in tap water to give a final concentration of 5 mg/l and liquid detergents were diluted 100-fold to simulate washing conditions. The endogenous enzymes contained in these detergents were inactivated by heating the diluted detergents for 30 min at 80°C prior to the addition of the ESW crude enzyme. Crude enzyme containing alkaline lipase, at 15 U/mL, was added to solid detergents diluted in tap water and incubated in various detergent solutions for 1 h at different temperatures, and then the residual enzyme activity was determined under standard assay conditions. To allow further comparison, the effect of surfactants, commercial detergents and oxidizing agents on a commercial lipase stability (Lipolase[®], marketed by Novo Nordisk, Denmark), was also studied under the same experimental conditions. The enzyme activity of the control sample (without any detergent), incubated under the same conditions, was taken as 100%.

Determination of protein concentration

Protein concentration was determined as described previously by Bradford [15] using bovine serum albumin (BSA) as the standard.

Statistical analyses

All results are expressed as the mean ± standard deviation (± SD). The experiment was conducted at least 3 times, and each treatment had 3 replicates. Thus, for most data points, the *n* = 3. The SAS System for Windows, V8 (SAS Institute, Gary, NC) was used for

statistical evaluations. Means ± S.D. were calculated for normalizing the control as 100%. Differences among treatment and control groups were tested by one-way analysis of variance (ANOVA), followed by pair-wise comparisons between groups using Tukey's test. Differences at *p* < 0.05 were considered significant.

Results and Discussion

Production of lipase

The medium B (100 mL) was incubated with different amounts of inoculum from the overnight *Staphylococcus* sp. culture. The maximum lipase production (15 U/mL of culture medium) was obtained after 30-h incubation, with an initial absorbance (OD) measured at 600 nm of 0.2 and an inoculum size of 3 × 10⁸ cells/L. Our results show that the time course of lipase production followed at 37°C with cell growth. The lipase activity was observed to start soon after incubation and reached the maximum (30 U/mL) at the end of the exponential phase corresponding to 30 h of cultivation (data not shown). Lipases are generally produced using carbon source such as oils, fatty acids, glycerol or tweens in the presence of an organic nitrogen source [16]. In fact, the production of SL1 is induced by the presence of long chain triacylglycerols (like olive oil).

Interfacial activation of SL1

The hydrolysis rate of TC₃ emulsified in 0.33% GA and 0.15 M NaCl by SL1 as a function of substrate concentration shows a normal Michaelis-Menten dependence of the activity on the substrate concentration (Figure 1). The interfacial activation cannot be taken as the unique

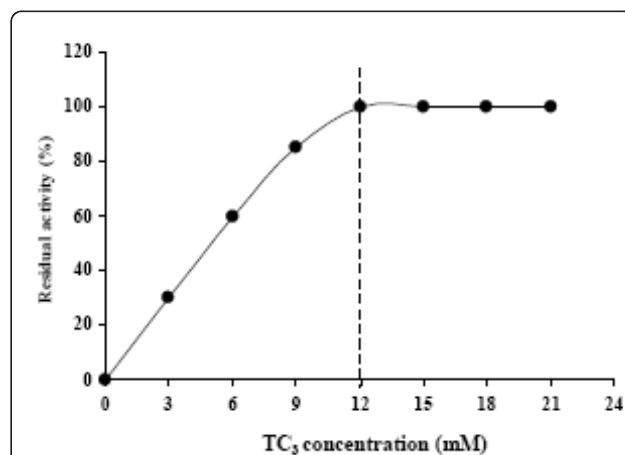


Figure 1 Hydrolysis rate of TC₃ by SL1 as function of substrate concentration. The TC₃ solutions were systematically prepared by mixing (3 × 30 s in warring blender) a given amount of TC₃ in 30 mL of 0.3% GA and 0.15 M NaCl. The release of propionic acid was recorded continuously at pH 7 and 37°C using a pH-stat. The CMC of TC₃ (12 mM) is indicated by vertical dotted lines.

criterion required distinguishing lipases from esterases [17]. Lipases are defined as a family of enzymes able to hydrolyse long-chain triacylglycerols independently of the presence, or the absence, of the interfacial activation phenomenon. Here, we can say that SL1, which hydrolyses efficiently olive oil, is a true lipase.

Substrate specificity

The enzymatic activity of lipases is very sensitive to the physical state of the substrate. In fact, the chain length selectivity constitutes an important difference between staphylococcal lipases. Both *Staphylococcus aureus* lipase and *Staphylococcus hyicus* lipase have a strong preference for short-chain substrates [18], whereas *Staphylococcus similans* lipase [19] and native *Staphylococcus xylosus* lipase [20] hydrolyse triacylglycerols irrespective of their chain length. Lipolytic activities of SL1 were checked towards several triacylglycerols substrates (Figure 2). The highest activity of SL1 was recorded on TC₁₈ (specific activity of 50 U/mg). A specific activity of 20, 15 and 10 U/mg was measured on TC₈, TC₄ and TC₃ respectively, whereas no activity was detected on TC₂. These results strongly show that this enzyme acts as a true lipase.

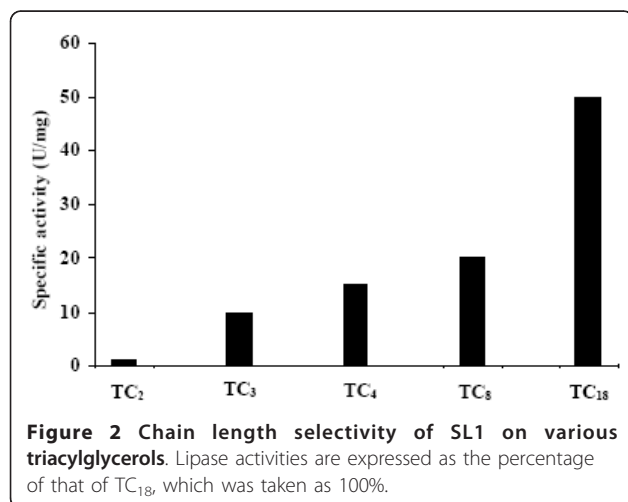
Effects of pH and temperature on SL1 activity and stability

The importance of alkaline and thermostable lipases for different applications has been growing rapidly. A great deal of research is currently going into developing lipases, which will work under alkaline conditions as fat stain removers. The activity of SL1 was investigated at different pH using olive oil emulsion as substrate. Unlike all previously described staphylococcal lipases [21], our results show that SL1 remains active at a pH range of 9.0-13.0, with an optimum at pH 12.0 (Figure 3A). This result recalls that observed in the case of *staphylococcus aureus*

lipase. In fact, the optimum pH of lipase activity was found to be ranged between pH 8.0 and 10.0 [22]. In the pH stability study, the lipase is stable at a broad range of pH values between pH 5.0-12.0 after 24 h incubating (Figure 3B). Moreover, this behaviour is in accordance with other reports in the literature, which lipase was found to be stable between pH 5.0 and 12.0. [22]. Lipases active and stable in alkaline media are very attracting, for example, lipase produced by *Acinetobacter radioresistens* has an optimum pH of 10.0 and it was stable over a pH range of 6.0-10.0; this enzyme has a great potential for application in the detergent industry [23,24]. The lipase activity was also determined at different temperatures under optimal conditions (Figure 3C). In contrast to the majority of staphylococcal lipases described so far [3,19,25], the SL1 activity increased significantly with increasing the temperature to reach its maximum value at 60°C. The thermostability of SL1 was also determined by measuring the residual activity after incubation of the pure enzyme at various temperatures (Figure 3D). In contrast to *Staphylococcus similans* lipase which is inactivated after a few minutes when incubated at 60°C [19,26], SL1 retained 90% or 60% of its activity after a 60 min incubation at 55 or 60°C, respectively. Thermostable and alkaline lipases are therefore highly attractive [24] to the synthesis of biopolymers and biodiesel and used for the production of pharmaceuticals, agrochemicals, cosmetics, and flavour [13].

Effects of calcium and other metal ions on SL1 activity

Metal cations, particularly Ca²⁺, play important roles in influencing the structure and function of enzyme, and calcium-stimulated lipases have been reported [27]. Previously, it has been demonstrated that the activity of staphylococcal lipases may depend on the presence of Ca²⁺ ions [19]. The effect of various Ca²⁺ concentrations on the rate of hydrolysis of SL1 was studied. Our results showed that SL1 activity can be detected in the absence of Ca²⁺. A specific activity of 40 U/mg was measured in the presence of 10 mM of chelator such as EDTA or EGTA when using olive oil emulsion as substrate. In the absence of chelators, the specific activity of SL1 reached 50 U/mg at 2 mM CaCl₂ (data not shown). The enzymatic activity of staphylococcal lipases is stimulated by Ca²⁺. It has been reported that the lipases from *P. glumae* [28] and *S. hyicus* [21,29], contain a Ca²⁺-binding site which is formed by two conserved aspartic acid residues near the active-site, and that binding of the Ca²⁺ ion to this site dramatically enhanced the activities of these enzymes. The effects of various cations at a concentration of 2 mM on lipase activity were assessed (Table 1). Mg²⁺ and Ba²⁺ had little positive effect on lipase activity. Other metals such as Cu²⁺, Zn²⁺ and Mn²⁺ had no significant effect on enzyme activity in our study (Table 1).



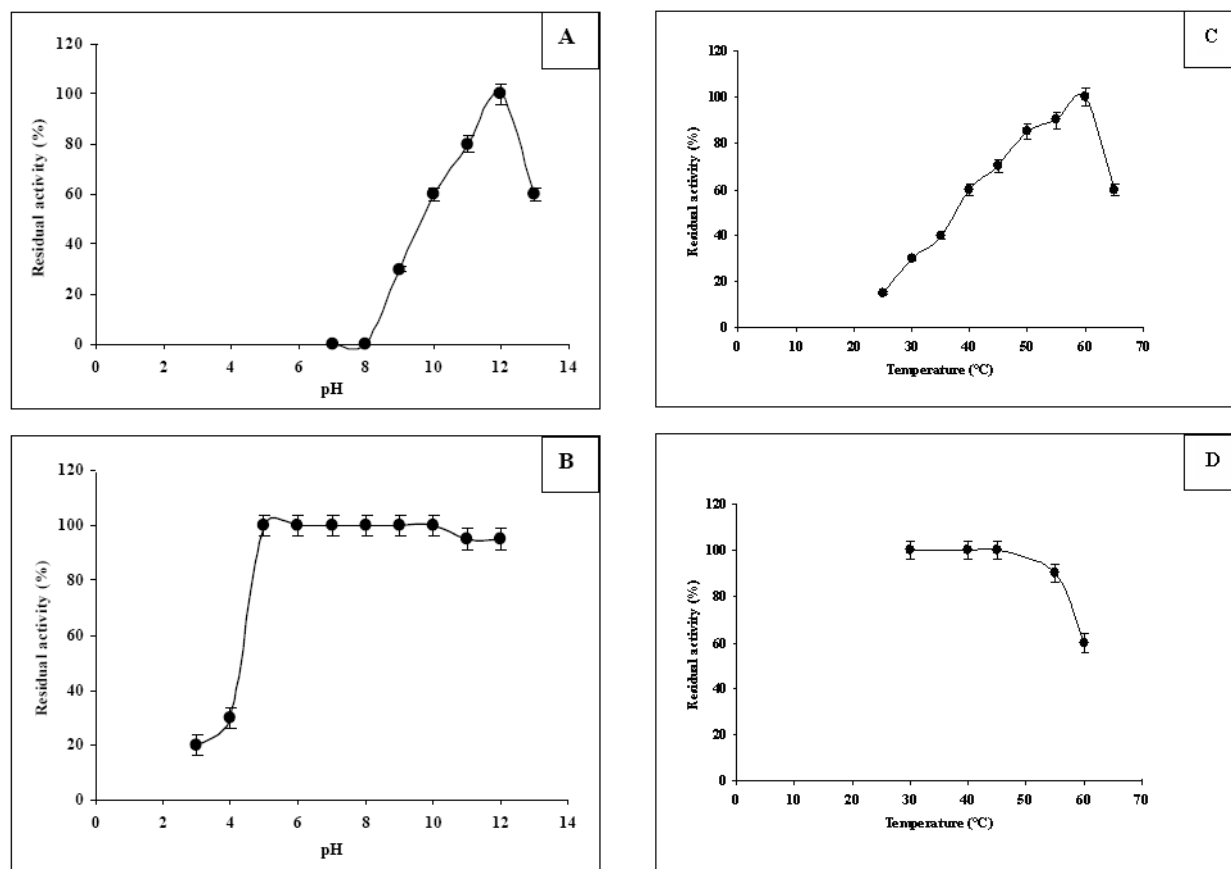


Figure 3 pH effect on enzyme activity (A) and stability (B) of SL1. Optimal pH was determined with olive oil emulsion at 60°C under the standard conditions. Stability was analysed after preincubating the crude enzyme for 24 h in different buffer solutions at various pH ranging from 3 to 12. Temperature effect of on SL1 activity (C) and stability (D). For temperature stability the crude enzyme was preincubated at different temperatures for 1 h and the remaining activity was measured under the standard conditions. The activity of the enzyme before incubation was taken as 100%. Values presented are the mean of triplicate analyses.

Effect of surfactants and oxidizing agents on SL1 stability

In order to be effective during washing, a good detergent enzyme must be compatible and stable with all commonly used detergent compounds such as surfactants, oxidizing agents [30]. Lipase enzymatic

Table 1 Effect of some metal ions (2 mM) on alkaline lipase activity of *Staphylococcus* sp ESW.

Metal ions	Relative lipase activity (%)
Ca ²⁺	120 ± 1.5
Mg ²⁺	108 ± 1.0
Zn ²⁺	110 ± 1.7
Mn ²⁺	100 ± 1.5
Cu ²⁺	100 ± 1.0
Ba ²⁺	100 ± 1.2
Control	100 ± 1.0

The activity was determined by incubating the crude enzyme in the presence of various metal ions (2 mM) under optimal conditions. The results are the mean ± S.D. of two independent experiments conducted in triplicate.

preparation was pre-incubated for 1 h at 40°C in the presence of SDS, Tween 20 and Triton X-100 and the residual enzyme activities were assayed under standard assay conditions (Table 2). Lipase activity was highly stable in the presence of the non-ionic surfactants, retaining 100% of the original activity in the presence of 1% Triton X-100 and 1% Tween 20 after 1 h incubation at 40°C. Higher concentration of Triton X-100 (5%, v/v) caused a moderate inhibition, less than 10%. Furthermore, the crude lipase enzyme was highly stable in the presence of the strong anionic surfactant (SDS, 1%), retaining approximately 90% of the initial lipolytic activity after incubation for 1 h at 40°C. The stability towards SDS is important because SDS stable enzymes have been rarely reported. As shown in Table 2 the lipase was much more stable than the Lipolase[®] in the presence of tween 20, triton X-100 and SDS. In addition, we investigated the effects of oxidizing agents (H₂O₂ and sodium perborate) on lipase stability pre-incubated for 1 h at

Table 2 Stability of alkaline lipase of *Staphylococcus* sp ESW in the presence of various detergent components.

Detergent components	Concentration (%)	Residual activity (%)	
		SL1	Lipolase®
None		100 ± 1.0	100 ± 1.0
Surfactants			
Tween 20	1 (V/V)	100 ± 1.5	80 ± 1.0
Triton X-100	1 (V/V)	100 ± 1.7	60 ± 1.0
SDS	5 (V/V)	92 ± 1.2	40 ± 1.2
	0.1 (W/V)	90 ± 1.0	80 ± 1.0
	1 (W/V)	85 ± 1.5	70 ± 1.5
	5 (W/V)	80 ± 1.9	65 ± 1.0
Oxidizing agents			
H ₂ O ₂	0.5 (V/V)	80 ± 1.1	60 ± 1.0
Sodium perborate	0.2 (V/V)	80 ± 1.5	60 ± 1.9

The crude enzyme preparation was incubated with different detergent components for 1 h at 40°C and the remaining activity was measured under standard assay conditions. The results are the mean ± S.D. of two independent experiments conducted in triplicate.

^a Initial activity = 15 U mL⁻¹ as 100% at 60°C and pH 12.0.

^b Initial activity = 100 U mL⁻¹ as 100% at 30°C and pH 9.0.

40°C. As shown in Table 2 lipolytic activity was little influenced by oxidizing agents. The crude lipase retained 80% of the initial activity in the presence of 0.5% (v/v) H₂O₂ and 0.2% (w/v) sodium perborate, respectively. Oxidizing reactions exerted by hydrogen peroxide and sodium hypochlorite are expected to occur in washing conditions. The stability of oxidations is an important characteristic required for an enzyme to be incorporated into a detergent. The oxidizing stability had been achieved by site-directed mutagenesis [31] and protein engineering [32] for many proteases [33] and the commercial detergent Lipolase®. As evidenced by the residual lipase activity (80% vs. 60%), our lipase showed higher resistance compared to Lipolase®, in the presence of strong oxidizing agent sodium hypochlorite (shown in Table 2). Thus, the high tolerance of oxidizing agents makes it an outstanding alkaline lipase of high commercial value.

Stability of SL1 with commercial solid and liquid detergents

All the commercial detergents contain hydrolytic enzymes and these enzymes-based detergents known as “green chemicals” find a wide range of applications in laundry, dishwashing, textile and other related industries [34]. In order to check the compatibility with liquid and solid detergents, the crude enzyme was pre-incubated in the presence of various commercial laundry detergents for 1 h at 50°C. Commercial lipase (Lipolase®) was used under the same conditions as SL1. The solid detergents were diluted in tap water to a final concentration of 5 mg/mL and the liquid detergents were diluted 100-fold

to simulate washing conditions. The data presented in Figure 4A show that the lipolytic preparation is extremely stable towards all solid detergents tested at 50°C, retaining 100% of its activity in the presence of Axion and Ariel and more than 80% with Dixan and Nadhif after 1 h incubation. Interestingly, SL1 was more stable than the commercially lipase used (Lipolase®), which retained only 65% and 60% of its activity after 1 h incubation at 50°C in the presence of Axion or Ariel and Dixan or Nadhif, respectively. On the other hand, the

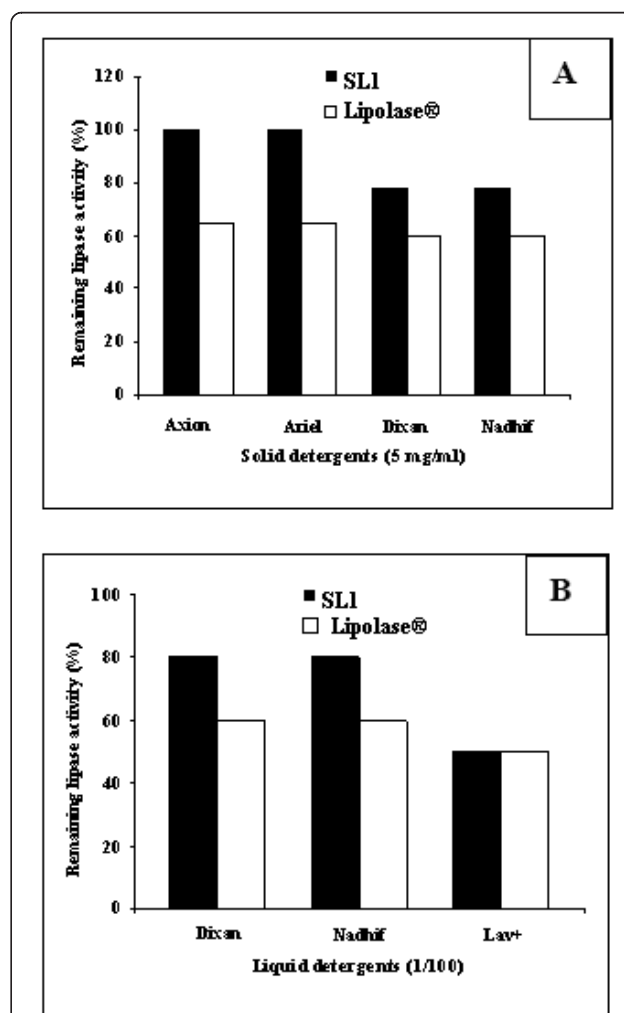


Figure 4 Stability of the alkaline lipase from *Staphylococcus* sp ESW in the presence of various commercial solid (A) and liquid (B) detergents. The alkaline lipase, at 15 U mL⁻¹, was incubated with solid detergents at 5 mg mL⁻¹ in tap water (pH 10.0) and with liquid detergents diluted 100-fold in tap water (pH 9.0) for 1 h at 50°C. Commercial lipase (Lipolase®) was tested under the same conditions as ESW enzyme. The residual activity was measured under the standard enzyme assay condition. Enzyme activities of control samples without any detergent, incubated under the similar conditions, were taken as 100%. Values presented are the mean of triplicate analyses.

data presented in Figure 4B show that SL1 is extremely stable in the presence of all liquid detergents tested. The crude enzyme retained 80% of its activity in the presence of Dixan and Nadhif after 1 h incubation at 50°C. However, commercial lipase (Lipolase®) retained only 60% of its activity in the presence under similar conditions. Additionally both SL1 and commercial lipase (Lipolase®) present a similar stability towards Lav+ liquid detergents used after 1 h incubation at 50°C (Figure 4B). These results show clearly that SL1 can be used in both liquid and solid detergents formulations.

Conclusion

This work describes the characterization of the crude enzymatic preparation containing a lipase produced by a novel *Staphylococcus* sp strain. The lipase preparation shows a high activity and stability in high alkaline pH and high temperatures. It showed stability not only towards the non-ionic surfactants like Triton X-100 and Tween 20, but also towards the strong anionic surfactant, SDS and oxidizing agents. Furthermore, the crude enzyme exhibited a high stability in the presence of various commercial liquid and solid laundry detergents. Considering its promising properties, one can say that SL1 can be considered as a potential candidate to be used as in biotechnology and essentially for application in the detergent industry.

Acknowledgements

This work is part of a post-doctoral thesis by Slim Cherif. This work received financial support from "Ministère de l'enseignement supérieur et de la recherche et de la technologie" granted to the « Laboratoire des Bioprocédés Environnementaux, pôle d'excellence régional (PER, AUF), Centre de Biotechnologie de Sfax, Tunisie.

Authors' contributions

SC, SM and FH designed the experiments, analyzed the data and drafted the manuscript. SA and SS conceived research and approaches and have given final approval of the manuscript to be published. All authors read and approve the final manuscript.

Competing interests

The authors declare that they have no competing interests.

Received: 27 October 2011 Accepted: 28 November 2011

Published: 28 November 2011

References

1. Grant WD, Heaphy S: Metagenomics and recovery of enzyme genes from alkaline saline environments. *Environ Technol* 2010, **31**:1135-1143.
2. Jiang Y, Zhou X, Chen Z: Cloning, expression, and biochemical characterization of a thermostable lipase from *Geobacillus stearothermophilus*. *Environ Technol* 2010, **31**:1107-1114.
3. Guncheva M, Zhiryakova D, Radchenkova N, Kambourova M: Properties of Immobilized lipase from *Bacillus stearothermophilus* MC7. Acidolysis of triolein with caprylic acid. *World J Microbiol Biotechnol* 2010, **25**:727-731.
4. Abdelkafi S, Ogata H, Barouh N, Fouquet B, Lebrun R, Pina M, Scheirlinckx F, Villeneuve P, Carrière F: Identification and biochemical characterization of a GDSL-motif carboxylester hydrolase from *Carica papaya* latex. *Biochim Biophys Acta* 2009, **1791**:1037-1046.
5. Dharmaraj S: Marine *Streptomyces* as a novel source of bioactive substances. *World J Microbiol Biotechnol* 2010, **26**:2123-2139.
6. Lee HK, Lee JK, Kim MJ, Lee CJ: Immobilization of lipase on single walled carbon nanotubes in ionic liquid. *Bull Korean Chem Soc* 2010, **31**:650-652.
7. Mitidieri S, Martinelli AHS, Schrank A, Vainstein MH: Enzymatic detergent formulation containing amylase from *Aspergillus niger*: a comparative study with commercial detergent formulations. *Bioresour Technol* 2006, **97**:1217-1224.
8. Jeon JH, Kim JT, Kim YJ, Kim HK, Lee HS, Kang SG, Kim SJ, Lee JH: Cloning and characterization of a new cold-active lipase from a deep-sea sediment metagenome. *Appl Microbiol Biotechnol* 2009, **81**:865-874.
9. Wang YX, Srivastava KC, Shen GJ, Wang HY: Thermostable alkaline lipase from a newly isolated thermophilic *Bacillus*, strain A30-1 (ATCC 53841). *J Ferment Bioeng* 1995, **79**:433-438.
10. Fendri I, Chaari A, Dhoubi A, Jlassi B, Carriere F, Sayadi S, Abdelkafi S: Isolation and characterization of a new lipolytic *Pseudomonas* sp., from Tunisian soil. *Environ Technol* 2010, **31**:87-95.
11. Pinzon-Martinez DL, Rodriguez-Gomez C, Minana-Galbis D, Carrillo-Chavez JA, Valerio-Alfaro G, Oliart-Ros R: Thermophilic bacteria from Mexican thermal environments: isolation and potential applications. *Environ Technol* 2010, **31**:957-966.
12. Cherif S, Gargouri Y: Thermoactivity and effects of organic solvents on digestive lipase from hepatopancreas of the green crab. *Food Chem* 2009, **116**:82-86.
13. Abdelkafi S, Fouquet B, Barouh N, Durner S, Pina M, Scheirlinckx F, Villeneuve P, Carrière F: *In vitro* comparisons between *Carica papaya* and pancreatic lipases during test meal lipolysis: potential use of CPL in enzyme replacement therapy. *Food Chem* 2009, **115**:488-494.
14. Cherif S, Frikha F, Gargouri Y, Miled N: Fatty acid composition of green crab (*Carcinus mediterraneus*) from the Tunisian Mediterranean coasts. *Food Chem* 2008, **111**:930-933.
15. Bradford MM: A rapid and sensitive method for the quantitation of microgram quantities of protein utilizing the principle of protein-dye binding. *Anal Biochem* 1976, **72**:248-254.
16. Gupta R, Saroop J, Jain S: Effect of cultural and assay conditions on cell bound lipase from a bacterial isolate SJ-15. *Asian J Microbiol Biotechnol Environ Sci* 2004, **6**:151-154.
17. Ferrato F, Carriere F, Sarda L, Verger R: A critical reevaluation of the phenomenon of interfacial activation. *Methods Enzymol* 1997, **286**:327-346.
18. Simons JW, Adams H, Cox RC, Dekker N, Gotz F, Slotboom AJ, Verheij HM: The lipase from *Staphylococcus aureus*. Expression in *Escherichia coli*, large-scale purification and comparison of substrate specificity to *Staphylococcus hyicus* lipase. *Eur J Biochem* 1996, **242**:760-769.
19. Sayari A, Agrebi N, Jaoua S, Gargouri Y: Biochemical and molecular characterization of *Staphylococcus simulans* lipase. *Biochimie* 2001, **83**:863-871.
20. Mosbah H, Sayari A, Mejdoub H, Dhoubi H, Gargouri Y: Biochemical and molecular characterization of *Staphylococcus xylosus* lipase. *Biochim Biophys Acta* 2005, **1723**:282-291.
21. Rosenstein R, Gotz F: Staphylococcal lipases: Biochemical and molecular characterization. *Biochimie* 2000, **82**:1005-1014.
22. Horchani H, Mosbah H, Ben Salem N, Gargouri Y, Sayari A: Biochemical and molecular characterisation of a thermoactive, alkaline and detergent-stable lipase from a newly isolated *Staphylococcus aureus* strain. *J Mol Cat B* 2009, **56**:237-245.
23. Chen SJ, Cheng CY, Chen TL: Production of an alkaline lipase by *Acinetobacter radioresistens*. *J Ferment Bioeng* 1998, **86**:308-312.
24. Illanes A: Stability of biocatalysts. *J Biotechnol* 1999, **2**:7-15.
25. Abdelkafi S, Sayadi S, Ben Ali Gam Z, Casalot L, Labat M: Bioconversion of ferulic acid to vanillic acid by *Halomonas elongata* isolated from table-olive fermentation. *FEMS Microbiol Lett* 2006, **262**:115-120.
26. Schmidt M, Larsen DM, Stougaard P: A lipase with broad temperature range from an alkaliphilic *gamma*-proteobacterium isolated in Greenland. *Environ Technol* 2010, **31**:1091-1100.
27. Haki GD, Rakshit SK: Developments in industrially important thermostable enzymes: a review. *Bioresour Technol* 2003, **89**:17-34.
28. Elkhattabi M, van Gelder P, Bitter W, Tommassen J: Role of the calcium ion and the disulfide bond in the *Burkholderia glumae* lipase. *J Mol Cat B* 2003, **22**:329-338.

29. Noble MEM, Cleasby A, Johnson LN, Egmond MR, Frenken LGJ: **The crystal structure of triacylglycerol lipase from *Pseudomonas glumae* reveals a partially redundant catalytic aspartate.** *FEBS Letters* 1993, **331**:123-128.
30. Tiesinga JW, van Pouderooyen G, Nardini M, Ransac S, Dijkstra BW: **Structural basis of phospholipase activity of *Staphylococcus hyicus* lipase.** *J Mol Biol* 2007, **371**:447-456.
31. Gupta R, Beg O, Lorenz P: **Bacterial alkaline proteases: molecular approaches and industrial applications.** *App Microbiol Biotechnol* 2002, **59**:15-32.
32. Outtrup H, Dambmann C, Christiansen M, Aaslyng DA: ***Bacillus* sp. JP395, method of making and detergent composition, US Patent number.** 1995, 55:466-594.
33. Wolff AM, Showell MS, Venegas MG, Barnett BL, Wertz WC: **Laundry performance of subtilisin protease, in: R.C. Bott (Ed.), Subtilisin Enzymes: Practical Protein Engineering.** *Plenum Press, New York* 1996, 113-120.
34. Tsuchiya K, Nakamura Y, Sakashita H, Kimura G: **Purification and characterization of a thermostable alkaline protease from alkalophilic *Thermoactinomyces* sp. HS682.** *Biosci Biotechnol Biochem* 1992, **56**:246-250.

doi:10.1186/1476-511X-10-221

Cite this article as: Cherif *et al.*: A newly high alkaline lipase: an ideal choice for application in detergent formulations. *Lipids in Health and Disease* 2011 **10**:221.

**Submit your next manuscript to BioMed Central
and take full advantage of:**

- Convenient online submission
- Thorough peer review
- No space constraints or color figure charges
- Immediate publication on acceptance
- Inclusion in PubMed, CAS, Scopus and Google Scholar
- Research which is freely available for redistribution

Submit your manuscript at
www.biomedcentral.com/submit

