

Multiplex shRNA Screening of Germ Cell Development by *in Vivo* Transfection of Mouse Testis

Nicholas R. Y. Ho,^{*1} Abul R. Usmani,^{*1} Yan Yin,[†] Liang Ma,[†] and Donald F. Conrad^{*2}

^{*}Department of Genetics and [†]Department of Medicine, Washington University School of Medicine, St. Louis, Missouri 63110

ORCID ID: 0000-0003-3828-8970 (D.F.C.)

ABSTRACT Spermatozoa are one of the few mammalian cell types that cannot be fully derived *in vitro*, severely limiting the application of modern genomic techniques to study germ cell biology. The current gold standard approach of characterizing single-gene knockout mice is slow as generation of each mutant line can take 6–9 months. Here, we describe an *in vivo* approach to rapid functional screening of germline genes based on a new nonsurgical, nonviral *in vivo* transfection method to deliver nucleic acids into testicular germ cells. By coupling multiplex transfection of short hairpin RNA (shRNA) constructs with pooled amplicon sequencing as a readout, we were able to screen many genes for spermatogenesis function in a quick and inexpensive experiment. We transfected nine mouse testes with a pilot pool of RNA interference (RNAi) against well-characterized genes to show that this system is highly reproducible and accurate. With a false negative rate of 18% and a false positive rate of 12%, this method has similar performance as other RNAi screens in the well-described *Drosophila* model system. In a separate experiment, we screened 26 uncharacterized genes computationally predicted to be essential for spermatogenesis and found numerous candidates for follow-up studies. Finally, as a control experiment, we performed a long-term selection screen in neuronal N2a cells, sampling shRNA frequencies at five sequential time points. By characterizing the effect of both libraries on N2a cells, we show that our screening results from testis are tissue-specific. Our calculations indicate that the current implementation of this approach could be used to screen thousands of protein-coding genes simultaneously in a single mouse testis. The experimental protocols and analysis scripts provided will enable other groups to use this procedure to study diverse aspects of germ cell biology ranging from epigenetics to cell physiology. This approach also has great promise as an applied tool for validating diagnoses made from medical genome sequencing, or designing synthetic biological sequences that can act as potent and highly specific male contraceptives.

KEYWORDS

mus musculus
next-generation
sequencing
shRNA
spermatogenesis
testis

As the carrier of genetic information from one generation to the next, germ cells are derived from one of the most specialized developmental

processes in the body. Once the stem cell commits to the terminal sperm lineage, it has to trigger various transcription factors to begin specialized metabolic processes, produce haploid cells via meiosis, tightly pack the genomic DNA, and prepare for functions like flagellum motion, cell recognition, and acrosome formation. Furthermore, some of the pathways for core physiological processes are distinct from somatic cells despite having similar functions (Eddy 1998). Perhaps due to this richness, the study of mammalian spermatogenesis has led to numerous seminal discoveries with broad implications in areas of biology such as stem cells (Chen *et al.* 2005), transposable elements (Girard *et al.* 2006), adaptive evolution (Carelli *et al.* 2016), and speciation (Good *et al.* 2010).

Despite the opportunities for discovery in the field of spermatogenesis, the pace of progress has been limited because existing *in vitro* model systems are technically challenging to implement (Stukenborg *et al.*

Copyright © 2017 Ho *et al.*

doi: 10.1534/g3.116.036087

Manuscript received October 11, 2016; accepted for publication November 9, 2016; published Early Online November 15, 2016.

This is an open-access article distributed under the terms of the Creative Commons Attribution 4.0 International License (<http://creativecommons.org/licenses/by/4.0/>), which permits unrestricted use, distribution, and reproduction in any medium, provided the original work is properly cited.

Supplemental material is available online at www.g3journal.org/lookup/suppl/doi:10.1534/g3.116.036087/-/DC1.

¹These authors contributed equally to this work.

²Corresponding author: Department of Genetics, Washington University School of Medicine, Campus Box 8232, St. Louis, MO 63110. E-mail: dconrad@genetics.wustl.edu

2009; Sato *et al.* 2011; Dores and Dobrinski 2014). Generation of knockout mouse models has thus been the most popular tool to characterize the function of genes in germ cells. Due to the high cost (over \$5000 USD) and the time involved (over 1 yr) in deriving a colony of a new mouse line, the “one-gene, one-mouse” approach cannot be easily used to perform systematic screens of the genome. This limited access to high-throughput screening in germ cells is a stark contrast to the rapid expansion of multiplex genomic techniques now being used in cell lines (ENCODE Project Consortium 2012). As these large-scale, multiplex genomic studies become more commonplace, the gap between our knowledge of germ cell and somatic cell biology will only grow if single-mutation mouse models remain the method of choice.

To address this problem, we have developed a quick, simple, and inexpensive method to screen numerous genes simultaneously *in vivo* for spermatogenesis function. The mammalian testis continuously produces millions of mature sperm each day. This abundance of testicular germ cells would easily support a multiplex genomics screen like those used in cell lines if one could develop a viable way to deliver nucleic acids into the testis of a living animal. The basis for our approach is a novel method for direct transfection of testicular germ cells, coupled to the popular RNAi screen, a mature technology commonly used to efficiently elucidate gene function. RNAi screens have been used in cell lines (Luo *et al.* 2008; Zuber *et al.* 2011b) or *in vivo* (Zender *et al.* 2008; Bric *et al.* 2009; Meacham *et al.* 2009; Zuber *et al.* 2011a; Beronja *et al.* 2013; Wuestefeld *et al.* 2013) in somatic tissues to discover important genes for a variety of biological processes.

Here, we demonstrate the feasibility of using this low-cost transfection method in mouse testes to screen multiple genes simultaneously for functional importance in spermatogenesis. By carefully designing the pilot study, we were also able to benchmark this system to prove the importance of large numbers of biological replicates and quantify the limits of this system. We also applied this method to establish the functional importance of 26 uncharacterized genes that we previously predicted to be important for infertility via machine learning (Ho *et al.* 2015).

MATERIALS AND METHODS

Gene selection

To design the pilot pool, we used data from the Mouse Genome Database (Eppig *et al.* 2015) from Jackson Labs (MGI) to create a list of genes that affect the male reproductive system when knocked out. We then used a list of genes that have been knocked out and not reported to cause any male reproductive defects to use as negative controls. For the predicted spermatogenesis gene pool, we picked the top 30 candidates from each of the mouse predicted infertility gene models (Ho *et al.* 2015) and filtered it to keep only the genes for which knockout mouse lines were not available based on the Jackson Labs MGI website. We then selected shRNAs against three of the known negative genes from the pilot pools together with two scrambled nonmammalian sequences to use as negative controls.

shRNA pool preparation

We used RNAi from the MISSION TRC-Mm 1.5 and 2.0 (Mouse) obtained from Sigma-Aldrich (see Supplemental Material, Table S1) ordered as shRNA plasmids. The shRNA expression cassette from the plasmids was amplified from the plasmid pool by PCR and purified using AMPure XP beads (see File S2). These purified amplicons were pooled and then used for injection into mouse testis and transfection into cell lines. An aliquot of this mixture was sequenced on MiSeq to determine the initial shRNA pool composition.

shRNA validation

Over half (65/121) the shRNAs in the pilot pool and about a third of the shRNAs (48/145) in the predicted gene pool were reported by Sigma-Aldrich to be validated in various cell lines (see Table S1). There was at least one validated shRNA for 72% (18/25) of the pilot pool genes and 45% (13/29) of the predicted pool genes. While not all the validated shRNAs were consistently significantly depleted in the two studies, many of them were, giving us confidence that the signal we observed was not caused by off-target effects.

Mouse testis transfection

We performed the experiments using C57BL/6 mice generated in-house between 28–32 d of age. All mice were maintained under pathogen-free conditions and all animal experiments were approved by Washington University’s Animal Studies Committee. Each mouse received bilateral intratesticular DNA injections five times, spaced 3–4 d apart (see File S1). Following the injections, the mice were allowed to recover until 20 d after the third injection, when testes were dissected. Genomic DNA from the whole testis was extracted using a QIAGEN DNeasy Blood and Tissue kit.

Cell line transfection

N2a cells were seeded at a density of 0.3×10^6 in 6-well cell culture plates. Cells were maintained in Dulbecco’s Minimum Essential Media (DMEM; GIBCO) supplemented with 10% heat inactivated Fetal Bovine Serum (FBS; GIBCO) and 1% penicillin-streptomycin (Pen-Strep; GIBCO) until they reached 70% confluency in 6-well cell culture plates. Each well of cells was transfected with 2.5 μ g shRNA pool DNA using Lipofectamine 3000 (Life Technologies) following the manufacturer’s instructions. The cells were then maintained at 37° with 5% CO₂ for 12 d, splitting at a ratio of 1:20 every 2 d with daily media replacement. At each passage, remaining cells after splitting were harvested and genomic DNA was extracted from them using the QIAGEN DNeasy Blood and Tissue Kit.

Immunofluorescence assays

Testis tissues were fixed in 4% paraformaldehyde diluted in PBS overnight. Following that, they were flushed in PBS three times for 1 hr each, followed by a flush in 30% ethanol for 1 hr, 50% ethanol for 1 hr, and finally 70% ethanol for 1 hr. Processing of the tissue was carried out in serial flushing as follows: 70% ethanol for 5 min, 70% ethanol for 45 min, 80% ethanol for 45 min, 95% ethanol for 45 min, 95% ethanol for 45 min, 100% ethanol for 1 hr, 100% ethanol for 1 hr, xylene for 1 hr, xylene for 1 hr, xylene for 1 hr, paraffin for 1 hr, and paraffin for 75 min. Tissues were then embedded in paraffin blocks and sectioned at 5 μ m thickness. Slides were boiled for 20 min in antibody retrieval solution (10 mM sodium citrate and 0.05% Tween20, pH 6.0) and stained with goat anti-GFP primary antibody (Abcam: ab5450) diluted 1:1000 in blocking solution (1 \times PBS, 0.2% Triton X, and 5% Donkey serum) overnight at 4°. A secondary antibody staining was performed using CF594 donkey anti-goat (Biotium: 20116) diluted 1:300 in blocking solution for 1.5 hr at room temperature. Hoeschst 33342 (Life Technologies: H3570) was diluted 1:500 in water and added to the slides for 5 min just before visualization.

Illumina sequencing library preparation

We used a custom protocol to amplify the shRNA sequences in the genomic DNA samples (see File S2). This protocol used two rounds of PCR amplification to prepare the sequencing library instead of ligation followed by PCR amplification. We started with 2 μ g of genomic DNA to survey the genomes of enough cells in order to reduce the likelihood

of dropout or PCR jackpotting; common artifacts when testing low numbers of cells.

Each biological sample had between three to five separate sequencing libraries prepared with different indices using different aliquots of genomic DNA to quantify technical noise. Sequencing libraries were then pooled and run in a lane of Illumina MiSeq 2 × 150 bp to obtain an average of at least 3000 reads per unique shRNA in the library.

Statistical analysis

Mapping of reads to shRNAs was done by aligning each read to the unique half of the hairpin sequence with no mismatches. A table of read counts for each shRNA was generated to determine significant enrichment/depletion. There was no significant difference in the counts between paired-end reads when they were mapped separately. We minimized technical noise by using the median value of technical replicates as the true count for each shRNA.

To determine significant depletion/enrichment of shRNAs, we used a custom R script (File S3). We started by normalizing the shRNA count data to the number of reads per shRNA per million reads in the sequencing library. We then calculated the log₂ fold enrichment of each shRNA in the testis relative to the initial DNA pool. The fold changes of different experiments using the same shRNA pool design were always normalized to the sequencing counts of the actual injected material. These fold changes were then merged to produce more biological replicates for a given shRNA pool design. Finally, we performed a Wilcoxon Rank Sum test for each shRNA's fold enrichment across biological replicates against the fold enrichment of shRNAs against genes that are not known to affect spermatogenesis, to calculate the likelihood that the shRNA was significantly depleted or enriched compared to the null. Any shRNA that had a *P*-value smaller than the cutoff was determined to be significant. Due to the low transfection efficiency (1–3%) (see Table S1), multiplicity of infection, a common issue in RNAi screens, was not a worry in the analysis.

Network analysis

We performed a functional pathway analysis of the genes targeted in the Predicted Genes screen and found four functional networks. We built networks based on coexpression, protein–protein interactions, shared protein domains, and colocalization. We used Cytoscape (Shannon *et al.* 2003) with the GeneMANIA plugin (Montoya *et al.* 2010) with the default settings to visualize the functional network of the tested predicted genes.

Data and reagent availability

The raw sequencing data supporting the conclusions of this article are available in the Short Read Archive under accession number SRP069249. Table S1 provides a detailed description of the design and clone name for every shRNA construct used in the study. Table S3 and Table S4 provide normalized screening results for each shRNA construct. Table S5 provides the raw read counts for every shRNA construct from every experiment. The code that was used to analyze these raw reads counts and produce the results in this paper is provided in File S3.

RESULTS

In vivo transfection

Recently, a small number of studies have shown that one can use viruses to transfect mouse tissues *in vivo* with a sufficiently high transfection rate for multiplex selection experiments (Beronja *et al.* 2013;

Wuestefeld *et al.* 2013). One of us (A.U.) recently developed a novel method for direct transfection of testicular germ cells that provides a nonviral, nonsurgical alternative for nucleic acid delivery. This technique uses a buffered salt solution to generate an osmotic gradient that drives water and dissolved linear DNA into the germ cells of the testis at a reasonably high rate (Usmani *et al.* 2016). Once inside the cells, the DNA integrates spontaneously and randomly into the genome at a concentration-dependent rate, presumably through nonhomologous end joining during routine DNA repair. We adapted this approach to transfect the germ cells in the testis to render it compatible with linear DNA libraries expressing shRNAs (*Materials and Methods*, Figure 1). Visual inspection of testes transfected with a GFP reporter indicated that both somatic and germ cell types receive construct, but that germ cells, which comprise well over 75% of the adult testis, are preferentially transfected (Figure 2). By integrating the expression cassette into the genome, we achieved stable expression of the RNAi construct in transfected cells that could persist for weeks and could be observed in germ cells spanning all stages of spermatogenesis (Figure 2).

Pilot shRNA screen

In order to optimize the screening technique, we designed a pilot shRNA pool targeting three classes of genes: (i) sixteen genes that have been shown to cause assorted dosage-dependent defects of sperm development when inactivated and/or overexpressed (BAX, CSF, KIT, PIN1, CPEB1, GNPAT, MLH3, SPO11, CIB1, MAP7, PYGO2, TBPL1, SH2B1, TSN, SIRT1, VAMP7, and VDAC3); (ii) five genes that have been characterized with knockout mice but have not been linked to spermatogenesis defects (MMP3, SYT4, TFF3, TNFSF4, and TYRP1); and (iii) three genes that have not been characterized in a mouse model and are not expressed in mouse testis (APOC4, LCE11, and SCRG1). Our pool contained 119 unique RNAi constructs with a mode of five RNAi constructs per targeted gene (see Table S1).

Using the pilot pool, we first benchmarked the infection efficiency of our novel osmotic gradient transfection buffer (“Tris-HCl + DNA”) against the current gold standard for *in vivo* screening, lentiviral infection. To enable rapid measurement of infection efficiency, we designed a qPCR assay for DNA copy number of the shRNA constructs, calibrated to actin (see Figure S1). We compared the infection rate of a single injection of high-titer virus (10⁹ Titer unit/ml) against either a single injection of Tris-HCl with 15 μg DNA, or a single injection of Tris-HCl + DNA followed by four “booster” shots of additional 15 μg aliquots of shRNA library separated 3–4 d apart (*Materials and Methods*). A single injection of high-titer lentivirus produced a testis with a higher infection rate than a single injection of Tris-HCl with 15 μg of DNA (see Table S2). However, the single injection of lentivirus produced an infection rate that was lower than five injections of the Tris-HCl + DNA (0.1% vs. 1–4%). Due to the lower infection rate, we observed low reproducibility and more dropout of shRNA constructs in the single DNA and viral injection testes samples compared to the five DNA injection testes. Since the cost of performing five DNA injections is significantly lower than even one high-titer lentivirus injection (about \$50 vs. \$250), we decided to proceed with the direct DNA injections rather than attempt multiple lentiviral injections.

Next, we transfected the pilot library into nine mouse testes using the five-shot protocol in order to perform a screen for genes required for germ cell differentiation. After transfection, we waited 20 d, slightly longer than half of one cycle of spermatogenesis, before recovery and quantification of the shRNA library from the testes. We extracted total genomic DNA from each testis, and used PCR to create at least three replicate sequencing libraries from each testis (*Materials and Methods*,

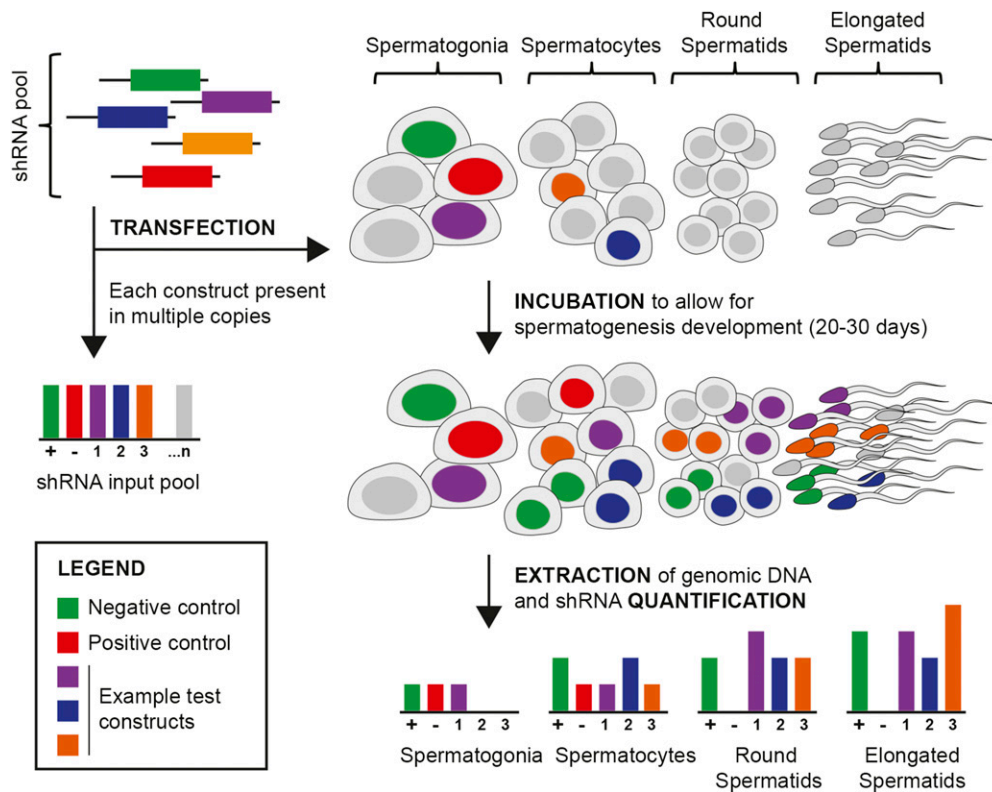


Figure 1 Overview of experimental approach. A short hairpin RNA (shRNA) library is designed against 20–30 genes, comprising 3–5 distinct constructs per gene. For a typical library, three types of genes are selected: positive controls (genes known to be essential for spermatogenesis), negative controls (genes not thought to have a testis phenotype when biallelically inactivated), and “test” genes whose role in spermatogenesis is uncertain and to be determined in the screen. This library is maintained as a pool of plasmids, each plasmid bearing one shRNA construct. DNA from the input pool is isolated and split into two aliquots: one for quantification and one for transfection. The transfection aliquot is delivered to the testis using our nonsurgical approach (*Materials and Methods*). After 20–30 d following transfection, the DNA from germ cells are isolated and shRNA-specific primers are used to create sequencing libraries from both the input pool and the post-testis pools. Sequencing libraries

are then sequenced using short-read sequencing and the relative abundance of each shRNA construct in a library can be estimated by counting the sequencing reads containing that shRNA construct. The effect of a gene knockdown on spermatogenesis is summarized as the log₂ fold change of shRNA abundance in the post-testis pool compared to the input pool. The screen is designed to be used in combination with any cell selection scheme; for instance, libraries can be made from purified subpopulations of germ cells to identify stage-specific effects. In the present study, we largely report results from post-testis libraries made from total testis DNA.

Figure S2). A control library was also made from an aliquot of the input shRNA pool that was not injected into testis. The frequency estimates of individual shRNAs were very strongly correlated among biological replicates (Pearson correlations 0.66–0.96, Figure 3).

We devised an analysis strategy to identify shRNAs that were significantly depleted in the post-testis shRNA library when compared

to the input library (*Materials and Methods*, Table S3). We used a *P*-value of 0.01 to declare any given construct as depleted in the post-testis library. In order to reduce the chance of off-target effects, we used the standard RNAi screen requirement that any given gene has to have two different significantly depleted shRNAs before declaring that gene as essential for spermatogenesis. Given the low multiplicity of infection of our transfection system, the fold changes of each shRNA construct should be independent random variables under the null hypothesis that there is no relationship between shRNA expression and germ cell survival. Thus, the probability of observing a gene with two depleted shRNA constructs should be 1×10^{-4} or $(0.01)^2$.

Next, we set out to estimate the false negative and false positive rate of our shRNA screening system when using this “two-hit” criterion. Of 17 positive control genes, 14 were identified as required for spermatogenesis, producing an estimate of 18% for the false negative rate of our approach (Figure 4A). The positive controls that did not show significant depletion were BAX, MATP7, and SH2B1. These false negatives could not be simply attributed to low sequence coverage, as the average coverage of constructs for each gene was 6188X, 1732X, and 1163X, respectively. Five out of five (100%) BAX constructs were experimentally validated to knock down expression; likewise four out of five of the MTAP7 and five out of five of the SH2B1 constructs were experimentally validated. One of the eight negative control genes, TNFSF4 (which is moderately expressed in the testes) was also significantly depleted, producing a conservative false positive rate estimate of 12.5% (one out of eight). Some positive control constructs (14/83 or 17%) showed statistically significant enrichment; this could be due to off-target effects or, more likely, an artifact due to the way

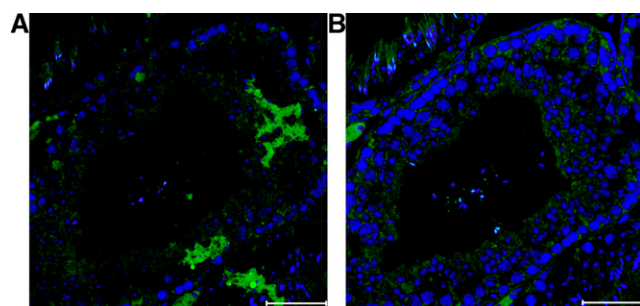


Figure 2 Expression of a transgene delivered directly to testicular germ cells with Tris-HCl transfection. (A) a C57Bl/6J mouse testis injected three times with 15 μ g of a plasmid constitutively expressing GFP via a CMV promoter dissolved in 150 mM Tris-HCl with 3–4 d between each injection. Using an anti-GFP antibody, GFP was observed in numerous germ cell subtypes including spermatids, spermatocytes, and spermatogonia. (B) an adjacent section of the same testis, processed without primary antibody against GFP. The scale bar on the bottom right indicates 50 μ m in length. Blue indicates Hoechst 33342 and green indicates GFP. CMV, cytomegalovirus; GFP, green fluorescent protein.

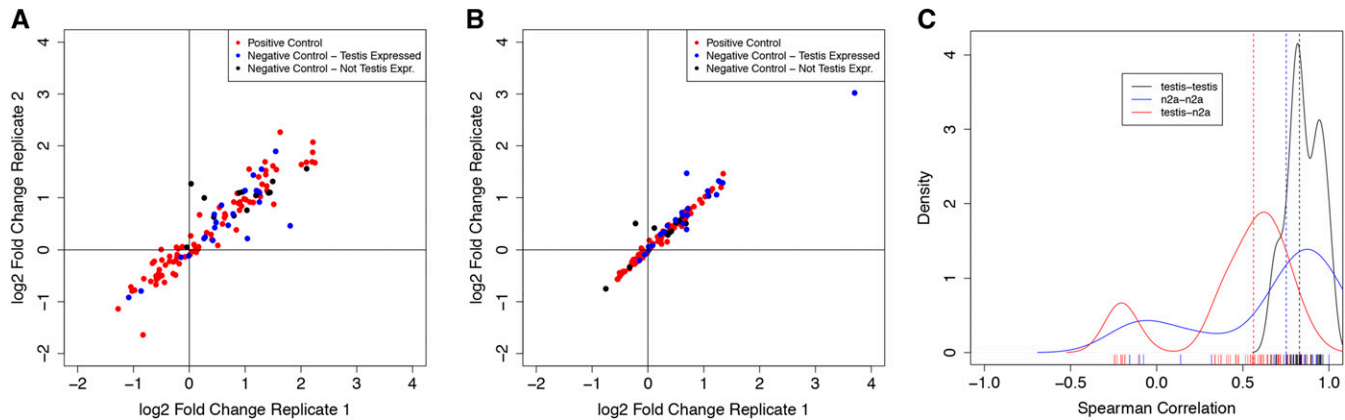


Figure 3 shRNA screening assays are highly reproducible and tissue-specific. We performed numerous biological replicates of the pilot library screening on testis ($n = 9$) and the N2a neuronal cell line ($n = 15$). (A) Comparison of two biological replicates within the testis. For each replicate, we summarize the frequency of all 119 shRNA constructs as the log₂ ratio of testis frequency/input library frequency. Overall, the concordance of fold changes between these two replicates is high (Spearman $R = 0.94$). While 11% of negative control constructs show negative fold changes in both biological replicates, all of these correspond to genes expressed in testis. On the other hand, 35% of positive control constructs show negative fold changes. (B) Comparison of two biological replicates of the screen in N2a cells shows the screen is also highly reproducible in this cell population (Spearman $R = 0.89$). The variance in fold change among constructs is visibly smaller in the N2a experiments when compared to the testis; this is likely due to higher transfection efficiency in N2a cells. (C) As a broader summary of screen reproducibility, we calculated Spearman correlations between all pairs of biological replicates for testis (black line) and N2a cells (blue line), as well as all possible pairs of N2a and testis replicates (red). Biological replicates of the same source tissue were highly correlated (median Spearman R for N2a–N2a comparisons = 0.81, dashed blue line; testis–testis = 0.83, dashed black line). However, screen results from different sources showed substantially lower correlation (median Spearman $R = 0.56$, dashed red line). This anticorrelation was largely driven by “negative control” shRNAs showing depletion in N2a cells, as well as neutral behavior of positive controls in N2a cells. shRNA, short hairpin RNA.

we normalized the shRNA count data to account for heterogeneity in transfection efficiency (see File S4 for more details).

One drawback of our screening strategy is that the genes we identify could be required specifically in spermatogenesis, or just for the general survival of all cells. We reasoned that it should be possible to disentangle these two effects by transfecting the same shRNA pool into an unrelated cell line and performing a survival screen on the cells. Genes required for general cell survival will be identified by both screens, while genes with germ-cell specific function will not.

We transfected three separate batches of Neuro-2a (N2a) cells, and cultured these for 12 d, in an attempt to match the number of cell divisions that would occur during spermatogenesis (Drost and Lee 1995). The cells were passaged a total of five times over this 12 d period. At each passage, we sampled genomic DNA from each culture, prepared sequencing libraries, and analyzed the data through the same pipeline as the testis samples (*Materials and Methods*). As with the testis libraries, there was robust correlation in shRNA fold changes among biological replicates (Figure 3B). Interestingly, the shRNA fold changes in the N2a library showed a substantially lower correlation with the testis library fold changes, indicating that we do indeed observe tissue-specific selection in our screen (Figure 3C). This reduced correlation was largely driven by “negative control” shRNAs showing depletion in N2a cells, as well as neutral behavior of positive controls in N2a cells. Furthermore, only two of the shRNA sets that were significantly depleted in the testes samples were also significantly depleted in the cell lines SIRT1 and CPEB1 (Figure 4A). Thus, we concluded that the genes with multiple shRNAs depleted in testes are often essential for germ cell development and not just general cell viability.

Screening for uncharacterized predicted fertility genes

We previously developed a computational algorithm to predict genes required for spermatogenesis (Ho *et al.* 2015). For each gene in the

mouse genome, this algorithm uses high-throughput genomic data to report a probability that the gene is required for spermatogenesis. While we have benchmarked the performance of this method by comparison with genes known to be irrelevant or essential for sperm production, we never experimentally validated any of our novel predictions. We designed a new shRNA pool against the top 26 genes from our computational screen that had no known role in spermatogenesis (*Materials and Methods*). The new shRNA pool comprised 130 shRNAs against the candidate genes and 15 negative control shRNAs. These candidates display a variety of expression signatures in spermatogenesis: four genes begin expression early in spermatogenesis (ALPI, POLA1, RFC1, and RRM1), 15 genes begin expression in the middle of spermatogenesis (CRISP2, GSTM5, HRASLS5, KLHDC3, LDHAL6B, PGAM2, PHF7, PHKG2, RFC2, SFI1, SPATA4, TAF9, TCP1, TCP11, and ZMYND10), and seven genes are only expressed late in spermatogenesis (4933411K16Rik, ACTL7B, GSG1, MEA1, SPA17, SPZ1, and UGT1A1) (see Table S1).

Similar to the pilot screen, the SE in shRNA frequencies estimated from technical replicates indicated strong reproducibility (Pearson correlations 0.54–0.96) and low experimental noise. None of the 15 negative control shRNAs were significantly depleted ($P \leq 0.01$) while all of the 26 candidate genes had at least two shRNAs targeting them that were significantly depleted in the testes samples (Table S4). A few genes even had up to four different significantly depleted shRNAs ($P \leq 0.01$) (Figure 4B). Similar to the pilot pool, we also transfected this pool into N2a cells to eliminate the possibility that these genes are required for general cell survival. Overall, the normalized read counts of the shRNA pool in N2a cells were not well correlated with the testis read counts (Figure 4B). Two genes (SFI1 and SPA17) had two or more shRNAs that were significantly depleted ($P \leq 0.01$). Given this, we concluded that most of the predicted genes (21/26) affect spermatogenesis and not survival.

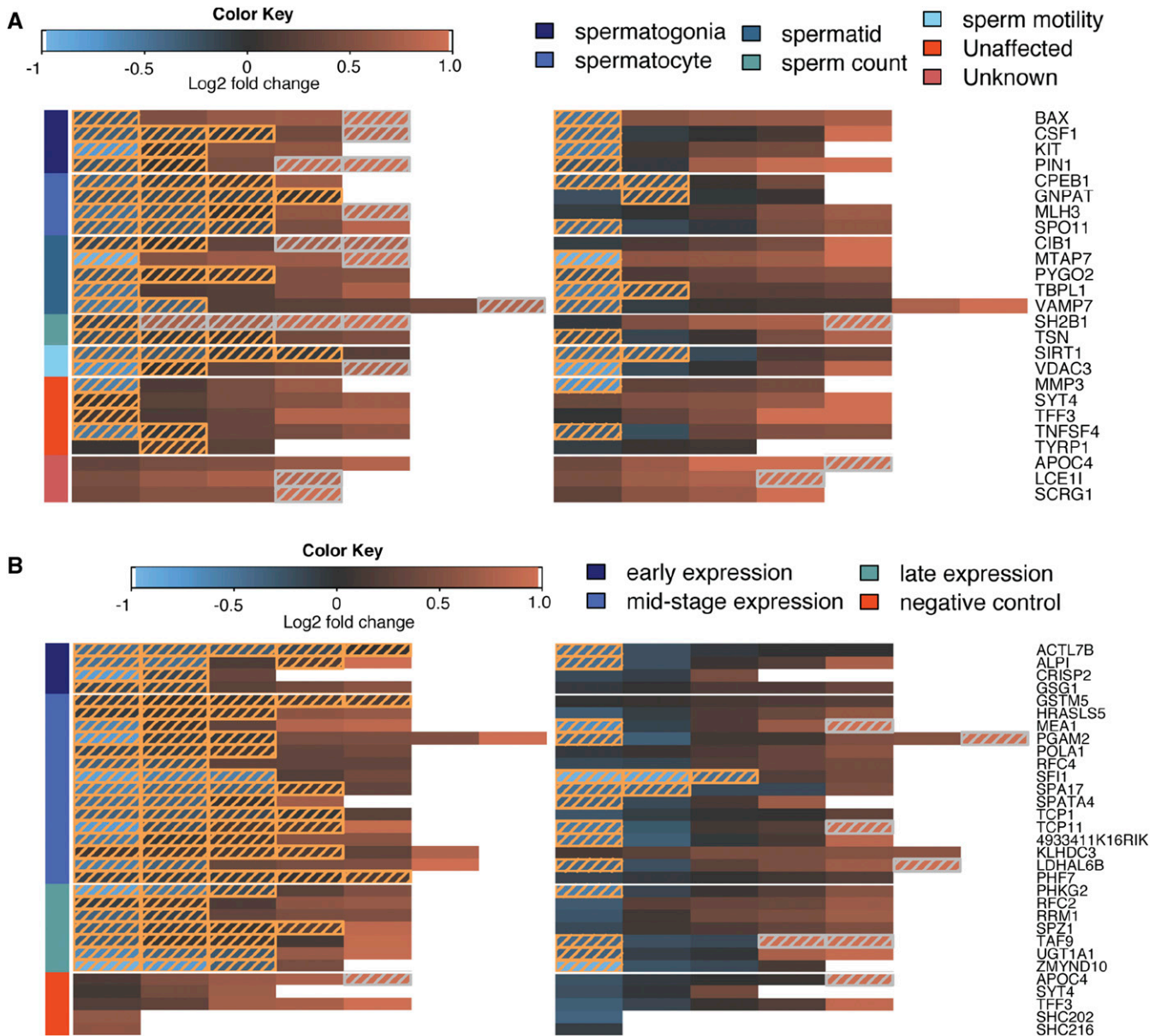


Figure 4 shRNA screen results. Overview of the full screening results for (A) the pilot shRNA pool and (B) the predicted genes shRNA pool. Each row of the heatmap summarizes the screening data for constructs targeting a single gene that were transfected into either testis (left heatmap) or N2A cells (right heatmap). Each cell shows the log₂ fold change of a single shRNA construct when comparing frequencies from the transfected tissue to the input pool frequencies. Constructs with significant depletion or enrichment in testis or N2a cells are encased in a hatched box; boxes with white hatching represent enrichment compared to the input pool and boxes with orange hatching represent depletion. The constructs within each row are sorted left-to-right in ascending order based on the log₂ fold change. In (A), the genes are further organized into functional categories as indicated by the color bar to the left of the heatmaps, and in (B) genes are also organized based on cell type of peak expression level, with stages encoded by the color bar. shRNA, short hairpin RNA.

Design of future screens

Given the strong results obtained with our first two shRNA screening experiments, we believe there is great potential for this approach moving forward. In order to improve the design of future screening experiments, we reanalyzed all of the sequencing data generated from our pilot screen to characterize the relationship between both (a) the number of biological replicates performed and (b) the number of constructs screened and the power to detect significant depletion of shRNAs against a typical positive control gene. To address (a), we estimated the fraction of positive control genes detected as significantly depleted as a function

of the number of biological replicates. To address (b), we estimated the fraction of positive control genes detected as significantly depleted as a function of sequencing coverage for each library. As in our initial analyses, we required that two shRNAs for the same gene should be shown to be significantly depleted in order to declare a gene as a “hit” in the screen.

Increasing the number of biological replicates provides more confidence that the RNAi fold changes are biologically significant, but we observed diminishing returns with increasing numbers of replicates. For lenient ($P < 0.1$), standard ($P < 0.05$), and stringent ($P < 0.01$) P -value

cutoffs there was little improvement in detectable RNAi fold change beyond 3–4, 4–5, and 6–7 biological replicates, respectively (Figure 5A).

Each shRNA construct was allocated an average of 5000 sequencing reads in our actual experiments. When using nine biological replicates, we found that we could have reduced the average read coverage to 250 reads per construct without any loss of power, and that 70% power could be maintained to even five reads per construct (Figure 5B). Further reducing average coverage rapidly and drastically reduces power.

DISCUSSION

The combination of multiplex genetic manipulation and high-throughput phenotyping presents incredible opportunities for studying the genome biology and evolution of the mammalian germline. Here, we have presented a method that opens the door to *in vivo* genomic experiments in mammalian testis and have demonstrated its utility by performing multiplex shRNA screens for genes essential to spermatogenesis. The performance of our direct *in vivo* screen is comparable to other benchmarked RNAi screens performed in other model systems. Our false negative rate of 18% is up to the standards of various studies benchmarking RNAi screens for different pathways in *Drosophila melanogaster* (DasGupta *et al.* 2007; Liu *et al.* 2009; Booker *et al.* 2011; Hao *et al.* 2013), where it was reported to be between 13 and 50%. Our false positive rate of 12.5% also compares favorably to the same study (Liu *et al.* 2009), which found their false positive rates to be between 7 and 18%. Since it is not fully understood how RNAi sequence affects knockdown efficiency, these false positive and negative rates are to be expected due to off-target effects and noneffective RNAi, respectively. This is why we observed variable (sometimes contrasting) fold changes for different RNAi purportedly targeting the same gene, although each RNAi has a consistent observed fold change.

As it stands, the technique produces strongly reproducible results but several aspects of the system could be improved. The key limitation is transfection efficiency. *In vivo* transfection rates tend to be orders of

magnitude lower than *in vitro* systems for the same transfection reagent (Li and Huang 2000). This leads to trade-offs between the size of the screening library, the number of biological replicates, and the cost of the transfection reagent. To avoid the issue of low transfection rates in other tissues, some groups have transfected cells *in vitro* and then transplanted them into recipient mice and performed screening in the xenografted models (Zender *et al.* 2008; Bric *et al.* 2009; Meacham *et al.* 2009; Zuber *et al.* 2011a). In principle, this may work for male germ cells, as spermatogonial stem cells have been transplanted into sterile donor testes to restore fertility in various species (Brinster and Zimmermann 1994; Ryu *et al.* 2007). In practice, this stem cell transplantation is a difficult technique to perform and a low number of unique stem cells successfully transplant per mouse. This creates a bottleneck that makes cell transplantation inappropriate for a screening study, since screening relies on having a large number of independent transfection events in order to produce statistically significant results. More technically challenging protocols, such as efferent duct injection or *in vitro* organogenesis, could enhance transfection efficiency. It could also be possible to use experimental evolution to generate new viral serotypes with high tropism for testis.

We were extremely conservative with the multiplexity of the pool in this study. In order to avoid dropout of individual constructs and produce reproducible signals, we ensured that the number of cells transfected was orders of magnitude larger than the number of shRNAs. In this manner, we could be confident that no shRNA would be underrepresented in the final pool due to transfection efficiency. Even with a transfection rate of 1–5%, we were able to obtain consistent signals using pools consisting of up to ~150 shRNAs. It is estimated that there are a total of 10^8 cells in the adult murine testis (Tegelenbosch and de Rooij 1993). With a transfection efficiency of 1%, 10^6 cells should receive constructs, suggesting that in our pilot experiment, each of our 119 unique shRNA constructs infected an average of 8403 cells. Conservatively, if we require that each construct transfects

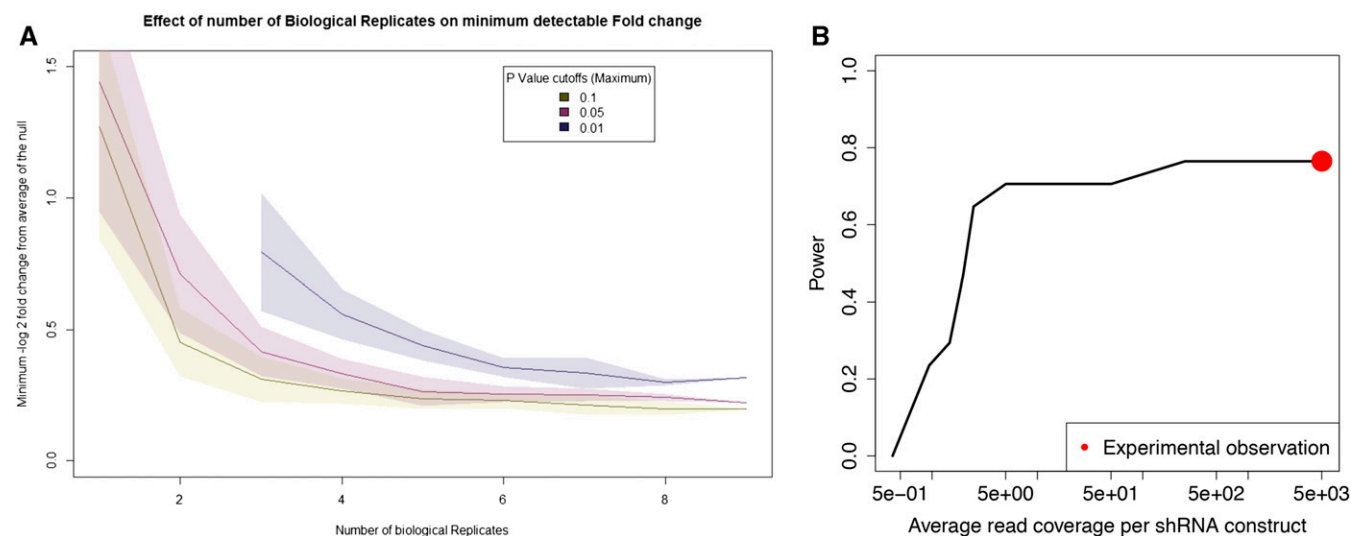


Figure 5 Influence of experimental design parameters on the power of the screen. We reanalyzed all of the sequencing data generated from our pilot screen to characterize the relationship between the number of biological replicates performed, the number of constructs screened, and the power to detect significant depletion of shRNAs against a typical positive control gene. (A) As the number of biological replicates increases, the minimum detectable shRNA fold change (*i.e.*, effect size) decreases. The three lines indicate the median minimum log₂ fold change that was declared as significant at a threshold of $P \leq 0.1$ (yellow), $P \leq 0.05$ (red), and $P \leq 0.01$ (blue). The shaded area around each line defines a 1 SD confidence interval. Note that the blue line starts at three biological replicates because there were no significant observations with two or fewer replicates. (B) Power to detect a positive control gene as significantly depleted increases with increasing average read coverage of each shRNA construct. The average coverage and power of the full pilot experiment is indicated with a red dot. shRNA, short hairpin RNA.

100 independent cells, we could increase the scale of the screen to 10,000 constructs. This would allow a screen of 2000 genes with five constructs per gene.

Another limitation of the present study is that our transfection approach is not able to target specific cell types; this presents challenges for the interpretation of screen results and confounds our ability to identify the function of genes with stage-specific effects on spermatogenesis. A simple way to address this limitation of “off-target” transfection would be to make shRNA constructs expressed by an inducible promoter (e.g., Cre) and transfect the library into an animal expressing the inducer in a stage-specific manner (e.g., a Vasa-Cre or Stra8-Cre animal).

As a proof-of-principle, we used our screening system to test 26 genes that we previously predicted as being essential for spermatogenesis. We validated all 26, which is remarkable, but also consistent with the fact that these were selected as the highest ranked (but unknown) spermatogenesis genes from over 1000 possible candidates. There are diverse molecular functions represented in this set of 26. Seven genes are thought to be involved in DNA replication and chromatin dynamics (ACTL7B, KLHDC3, POLA1, RFC2, RFC4, RRM1, and SFI1), seven in metabolism (ALPI, GSTM5, HRASLS5, LDHAL6B, PGAM2, PHKG2, and UGT1A1), four transcription factors (OHF7, SPZ1, TAF9, and ZMYND10), two in protein folding (TCP1 and TCP11), one in cell binding in sperm (SPA17), and one involved in capacitation of the membrane (CRISP2). In order to better understand our ascertainment, we visualized the functional relationships of these candidate genes with other known spermatogenesis genes (see Figure S3). Most of the candidates were related through a single large network of interactions but, interestingly, all seven candidates implicated in DNA replication and chromatin dynamics were related by a smaller, standalone network that has yet to be characterized in testis. Also noteworthy were the three genes of unknown molecular function: 4933411K16Rik, GSG1, and SPATA4. These genes could work in novel pathways, providing new insights about spermatogenesis.

Beyond its use as a validation tool, there are many potential applications of testis shRNA screening. During this project, we attempted to enhance the characterization of our target genes by performing additional screens that use cell stage or functional separation (via FACS and sperm motility assays, respectively). Unfortunately, because the number of cells we could retrieve in this manner was limited, we were unable to prepare sequencing libraries from the subpopulations. If we could transfect a majority (60–80%) of the cells, or if it was possible to sort and retrieve large numbers of cells (10 sec of millions), direct functional assays using an RNAi pool may be possible. There are many mysterious aspects of germ cell development and function that could be rapidly screened when *in vivo* transfection becomes more efficient. What are the causes and consequences of germ cell epimutation? What are the determinants of sperm morphology, and why is sperm morphology so variable within a single ejaculate? Is the extensive transcription of noncoding DNA during spermiogenesis functional, or is it just an epiphenomenon? Finally, there are also numerous translational applications for this technique, as a tool for validating diagnoses made from medical sequencing data or for developing highly specific male contraceptives.

Here, we have reported a novel *in vivo* screening method to characterize the function of genes in the mammalian testis, and used it to validate 26 candidate genes as essential for spermatogenesis. It would have been impossible for our group to generate the same experimental evidence for these candidates using conventional single-gene mouse models. We have provided experimental protocols (see File S1 and File S2) and an analysis pipeline (see File S3) to enable other interested

groups to apply this screening technique to their own questions of interest.

ACKNOWLEDGMENTS

The authors thank Joseph Dougherty for providing materials and facilities for the N2a cell line experiments and Katinka Vigh-Conrad for assistance with preparation of two figures. We thank the Genome Technology Access Center in the Department of Genetics at Washington University School of Medicine for help with Illumina sequencing. The Center is partially supported by National Cancer Institute Center Support grant #P30 CA91842 to the Siteman Cancer Center and by Institute for Clinical and Translational Science/Clinical and Translational Science Award grant# UL1 TR000448 from the National Center for Research Resources (NCRR), a component of the National Institutes of Health (NIH), and NIH Roadmap for Medical Research. This publication is solely the responsibility of the authors and does not necessarily represent the official view of NCRR or NIH. The authors declare no competing interests. This work was funded by grants from the NIH (www.nih.gov) [R01HD078641 and R01MH101810 to D.F.C.] and by the National Science Scholarship (PhD) training grant from the Agency for Science Technology and Research (A*STAR, <http://a-star.edu.sg>) of Singapore to N.R.Y.H. The funders had no role in the study design, data collection and analysis, decision to publish, or preparation of the manuscript. Author contributions: N.R.Y.H., A.R.U., Y.Y., L.M., and D.F.C. designed the initial composition and approach of the screening study. A.R.U. executed most of the mouse testes injections, while N.R.Y.H. and Y.Y. performed some as well. N.R.Y.H. prepared the material for injection and the samples for sequencing and quantification. N.R.Y.H. and D.F.C. analyzed the data and prepared the manuscript.

LITERATURE CITED

- Beronja, S., P. Janki, E. Heller, W. H. Lien, B. E. Keyes *et al.*, 2013 RNAi screens in mice identify physiological regulators of oncogenic growth. *Nature* 501: 185–190.
- Booker, M., A. A. Samsonova, Y. Kwon, I. Flockhart, S. E. Mohr *et al.*, 2011 False negative rates in *Drosophila* cell-based RNAi screens: a case study. *BMC Genomics* 12: 50.
- Bric, A., C. Miething, C. U. Bialucha, C. Scuoppo, L. Zender *et al.*, 2009 Functional identification of tumor-suppressor genes through an *in vivo* RNA interference screen in a mouse lymphoma model. *Cancer Cell* 16: 324–335.
- Brinster, R. L., and J. W. Zimmermann, 1994 Spermatogenesis following male germ-cell transplantation. *Proc. Natl. Acad. Sci. USA* 91: 11298–11302.
- Carelli, F. N., T. Hayakawa, Y. Go, H. Imai, M. Warnefors *et al.*, 2016 The life history of retrocopies illuminates the evolution of new mammalian genes. *Genome Res.* 26: 301–314.
- Chen, C., W. Ouyang, V. Grigura, Q. Zhou, K. Carnes *et al.*, 2005 ERM is required for transcriptional control of the spermatogonial stem cell niche. *Nature* 436: 1030–1034.
- DasGupta, R., K. Nybakken, M. Booker, B. Mathey-Prevot, F. Gonsalves *et al.*, 2007 A case study of the reproducibility of transcriptional reporter cell-based RNAi screens in *Drosophila*. *Genome Biol.* 8: R203.
- Dores, C., and I. Dobrinski, 2014 De novo morphogenesis of testis tissue: an improved bioassay to investigate the role of VEGF165 during testis formation. *Reproduction* 148: 109–117.
- Drost, J. B., and W. R. Lee, 1995 Biological basis of germline mutation: comparisons of spontaneous germline mutation rates among *Drosophila*, mouse, and human. *Environ. Mol. Mutagen.* 25(Suppl. 26): 48–64.
- Eddy, E. M., 1998 Regulation of gene expression during spermatogenesis. *Semin. Cell Dev. Biol.* 9: 451–457.
- ENCODE Project Consortium, 2012 An integrated encyclopedia of DNA elements in the human genome. *Nature* 489: 57–74.

- Eppig, J. T., J. A. Blake, C. J. Bult, J. A. Kadin, J. E. Richardson *et al.*, 2015 The Mouse Genome Database (MGD): facilitating mouse as a model for human biology and disease. *Nucleic Acids Res.* 43: D726–D736.
- Girard, A., R. Sachidanandam, G. J. Hannon, and M. A. Carmell, 2006 A germline-specific class of small RNAs binds mammalian Piwi proteins. *Nature* 442: 199–202.
- Good, J. M., T. Giger, M. D. Dean, and M. W. Nachman, 2010 Widespread over-expression of the X chromosome in sterile F(1)hybrid mice. *PLoS Genet.* 6: e1001148.
- Hao, L., Q. He, Z. Wang, M. Craven, M. A. Newton *et al.*, 2013 Limited agreement of independent RNAi screens for virus-required host genes owes more to false-negative than false-positive factors. *PLOS Comput. Biol.* 9: e1003235.
- Ho, N. R., N. Huang, and D. F. Conrad, 2015 Improved detection of disease-associated variation by sex-specific characterization and prediction of genes required for fertility. *Andrology* 3: 1140–1149.
- Li, S., and L. Huang, 2000 Nonviral gene therapy: promises and challenges. *Gene Ther.* 7: 31–34.
- Liu, T., D. Sims, and B. Baum, 2009 Parallel RNAi screens across different cell lines identify generic and cell type-specific regulators of actin organization and cell morphology. *Genome Biol.* 10: R26.
- Luo, B., H. W. Cheung, A. Subramanian, T. Sharifnia, M. Okamoto *et al.*, 2008 Highly parallel identification of essential genes in cancer cells. *Proc. Natl. Acad. Sci. USA* 105: 20380–20385.
- Meacham, C. E., E. E. Ho, E. Dubrovsky, F. B. Gertler, and M. T. Hemann, 2009 In vivo RNAi screening identifies regulators of actin dynamics as key determinants of lymphoma progression. *Nat. Genet.* 41: 1133–1137.
- Montejo, J., K. Zuberi, H. Rodriguez, F. Kazi, G. Wright *et al.*, 2010 GeneMANIA Cytoscape plugin: fast gene function predictions on the desktop. *Bioinformatics* 26: 2927–2928.
- Ryu, B. Y., K. E. Orwig, J. M. Oatley, C. C. Lin, L. J. Chang *et al.*, 2007 Efficient generation of transgenic rats through the male germline using lentiviral transduction and transplantation of spermatogonial stem cells. *J. Androl.* 28: 353–360.
- Sato, T., K. Katagiri, A. Gohbara, K. Inoue, N. Ogonuki *et al.*, 2011 In vitro production of functional sperm in cultured neonatal mouse testes. *Nature* 471: 504–507.
- Shannon, P., A. Markiel, O. Ozier, N. S. Baliga, J. T. Wang *et al.*, 2003 Cytoscape: a software environment for integrated models of biomolecular interaction networks. *Genome Res.* 13: 2498–2504.
- Stukenborg, J. B., S. Schlatt, M. Simoni, C. H. Yeung, M. A. Elhija *et al.*, 2009 New horizons for in vitro spermatogenesis? An update on novel three-dimensional culture systems as tools for meiotic and post-meiotic differentiation of testicular germ cells. *Mol. Hum. Reprod.* 15: 521–529.
- Tegelenbosch, R. A., and D. G. de Rooij, 1993 A quantitative study of spermatogonial multiplication and stem cell renewal in the C3H/101 F1 hybrid mouse. *Mutat. Res.* 290: 193–200.
- Usmani, A., N. Ganguli, S. K. Jain, N. Ganguli, R. Sarkar *et al.*, 2016 Robust generation of transgenic mice by simple hypotonic solution mediated delivery of transgene in testicular germ cells. *Mol. Ther. Methods Clin. Dev.* DOI: <http://dx.doi.org/10.1101/049239>.
- Wuestefeld, T., M. Pesic, R. Rudalska, D. Dauch, T. Longerich *et al.*, 2013 A direct in vivo RNAi screen identifies MKK4 as a key regulator of liver regeneration. *Cell* 153: 389–401.
- Zender, L., W. Xue, J. Zuber, C. P. Semighini, A. Krasnitz *et al.*, 2008 An oncogenomics-based in vivo RNAi screen identifies tumor suppressors in liver cancer. *Cell* 135: 852–864.
- Zuber, J., A. R. Rappaport, W. Luo, E. Wang, C. Chen *et al.*, 2011a An integrated approach to dissecting oncogene addiction implicates a Myb-coordinated self-renewal program as essential for leukemia maintenance. *Genes Dev.* 25: 1628–1640.
- Zuber, J., J. Shi, E. Wang, A. R. Rappaport, H. Herrmann *et al.*, 2011b RNAi screen identifies Brd4 as a therapeutic target in acute myeloid leukaemia. *Nature* 478: 524–528.

Communicating editor: D. W. Threadgill