

IGHV gene mutational status and 17p deletion are independent molecular predictors in a comprehensive clinical-biological prognostic model for overall survival prediction in chronic lymphocytic leukemia

Bulian *et al.*

RESEARCH

Open Access

# IGHV gene mutational status and 17p deletion are independent molecular predictors in a comprehensive clinical-biological prognostic model for overall survival prediction in chronic lymphocytic leukemia

Pietro Bulian<sup>1\*</sup>, Davide Rossi<sup>2</sup>, Francesco Forconi<sup>3</sup>, Giovanni Del Poeta<sup>4</sup>, Francesco Bertoni<sup>5</sup>, Emanuele Zucca<sup>5</sup>, Marco Montillo<sup>6</sup>, Gabriele Pozzato<sup>7</sup>, Giovanni D'Arena<sup>8</sup>, Dimitar G Efremov<sup>9</sup>, Roberto Marasca<sup>10</sup>, Francesco Lauria<sup>3</sup>, Gianluca Gaidano<sup>2</sup>, Valter Gattei<sup>1†</sup> and Luca Laurenti<sup>1†</sup>

## Abstract

**Background:** Prognostic index for survival estimation by clinical-demographic variables were previously proposed in chronic lymphocytic leukemia (CLL) patients. Our objective was to test in a large retrospective cohort of CLL patients the prognostic power of biological and clinical-demographic variable in a comprehensive multivariate model. A new prognostic index was proposed.

**Methods:** Overall survival and time to treatment in 620 untreated CLL patients were analyzed retrospectively to evaluate the multivariate independence and predictive power of mutational status of immunoglobulin heavy chain variable gene segments (IGHV), high-risk chromosomal aberration such as 17p or 11q deletions, CD38 and ZAP-70 expression, age, gender, Binet stage,  $\beta$ 2-microglobulin levels, absolute lymphocyte count and number of lymph node regions.

**Results:** IGHV mutational status and 17p deletion were the sole biological variables with independent prognostic relevance in a multivariate model for overall survival, which included easily measurable clinical parameters (Binet staging,  $\beta$ 2-microglobulin levels) and demographics (age and gender). Analysis of time to treatment in Binet A patients below 70 years of age showed that IGHV was the most important predictor. A novel 6-variable clinical-biological prognostic index was developed and internally validated, which assigned 3 points for Binet C stage, 2 points/each for Binet B stage and for age > 65 years, 1 point/each for male gender, high  $\beta$ 2-microglobulin levels, presence of an unmutated IGHV gene status or 17p deletion. Patients were classified at low-risk (score = 0-1; 21%), intermediate-risk (score 2-5; 63% of cases), high-risk (score 6-9; 16% of cases). Projected 5-year overall survival was 98%, 90% and 58% in low-, intermediate- and high-risk groups, respectively. A nomogram for individual patient survival estimation was also proposed.

**Conclusions:** Data indicate that IGHV mutational status and 17p deletion may be integrated with clinical-demographic variables in new prognostic tools to estimate overall survival.

**Keywords:** Chronic lymphocytic leukaemia, Prognosis, Prognostic score, Nomogram

\* Correspondence: pbulian@cro.it

† Contributed equally

<sup>1</sup>Clinical and Experimental Onco-Hematology Unit, IRCCS Centro di Riferimento Oncologico, via Franco Gallini 2, 33170 Aviano (PN), Italy  
Full list of author information is available at the end of the article

## Background

According to the updated National Cancer Institute-Working Group (NCI-WG) guidelines, indication for treatment of chronic lymphocytic leukemia (CLL) still depends on clinical stage and disease activity [1]. In this context, measurements of biological prognostic markers, namely CD38, ZAP-70, mutational status of immunoglobulin heavy chain variable gene segments (IGHV), are judged as mandatory in the context of clinical trials, but not in general practice, since they fail to influence therapeutic decisions [1]. The only exception is represented by analyses of chromosomal aberrations by interphase fluorescence in-situ hybridization (FISH), given the presence of high-risk cytogenetic lesions (del11q and del17p), which may predict resistance to chemotherapy-based treatments [2]. Wierda et al. [3] proposed to combine a set of clinical risk factors, i.e. age, gender, Rai staging, absolute lymphocyte count (ALC) and number of involved lymph node regions (LNR), with an inexpensive and widely available serum marker such as beta2-microglobulin ( $\beta_2$  M) to develop a prognostic index (PI) stratifying patients in three risk groups with different expected median survival, and a nomogram, estimating individual patient survivals. This model was subsequently validated in independent patients series also using time to first treatment as end-point [4-8]. A reduction of this model from six to four variables, i.e. age, gender,  $\beta_2$  M levels and Binet staging, was also shown to predict survival with equal or even better performance [8]. The object of the present study was to provide evidence that prognostic models for overall survival based on clinical variables [4-8] could be improved by information on biological risk factors. By retrospectively analyzing a multicentre CLL population of over 600 untreated patients the most significant and independent biological and clinical prognosticators were integrated in a new clinical-biological prognostic index for group stratification and in a novel nomogram for estimating individual survival.

## Methods

### Patient population

Between 1996 and 2008 a cohort of 620 CLL patients was collected in the context of a larger multicenter patient dataset ( $n = 1037$ ), previously utilized to propose a modified prognostic model and nomogram [8], according to the availability of the following biological prognosticators: IGHV mutational status, chromosomal abnormalities, as detected by interphase FISH, and flow cytometric expression of CD38 and ZAP-70. Moreover, since most of the diagnoses of the original patient set were made before the publication of the revised NCI-WG guidelines [1], all cases of previously defined CLL that could be re-classified as monoclonal B cell lymphocytosis (MBL) were

removed accordingly. The percentage of recruited cases in the different centers was: 30% at Roma Catholic University, 25% at Novara, 15% at Roma Tor Vergata, 8% at Siena, 6% at Milano, 4% each in the other 4 centers. Cut-points for LNR were as previously reported [3]. Continuous variables age and  $\beta_2$  M levels were categorized using cut-points at 65 years for age and at the upper limit of normal (ULN) for  $\beta_2$  M, as deduced by the analysis of martingale residuals plots [9]; ALC was categorized at the median, since the martingale residual plots did not show any suitable cut-point.

### Biological prognosticators

Evaluation of biological prognosticators was centralized in few reference laboratories, utilizing previously validated common procedures; in detail, 5 centers performed IGHV mutational analysis, 6 centers performed cytogenetics and flow cytometry. IGHV mutational status was performed as previously reported [10]. Cytogenetic abnormalities involving chromosomes 11 (del11q22; hereafter del11), 12 (trisomy 12), 13 (13q14.3) and 17 (del17p13; hereafter del17) were investigated by interphase FISH, as reported [11]. Results of FISH analyses were classified as unfavourable when high-risk genomic aberrations (del17p and or del 11q) were present [12-14]. ZAP-70 measurements were determined by flow cytometry, utilizing the 20% of positive CLL cells as cut-off to discriminate between ZAP-70 positive and negative cases [15-18]. CD38 measurements were performed as reported [19], using a threshold at 30% expression to define positive cases. All the variables were measured at or within one year from diagnosis and always before treatment on either fresh or frozen samples. Data were used upon informed consent from patients and approval by Institutional Review Boards (Centro di Riferimento Oncologico, Aviano; Catholic University of the Sacred Heart, Rome), and in accordance with the Declaration of Helsinki.

### Statistical methods

All analyses were performed in R, an open source statistical package (<http://www.r-project.org/>). Median follow-up was computed using the reverse censoring method. The primary end points were overall survival (OS) and time-to-first-treatment (TTT), defined as described [1,20,21]. OS was estimated using Kaplan-Meier plots and compared between groups by log-rank test. Univariate and multivariate Cox models were used to verify independent prognostic power of each parameter. Model minimization was performed by stepwise backward elimination. A  $p$  value  $< 0.05$  was considered to be statistically significant. Departure from proportionality in hazard was tested in all Cox models. The predictive accuracy of various Cox models was evaluated by calculating the concordance index

(c-index), which is a probability of concordance between predicted and observed survival, equal to the area under the receiver operating characteristics curve for censored data [22]. A c-index of 0.5 indicates that outcomes are completely random, whereas a c-index of 1 indicates that the model is a perfect predictor. Prediction error was calculated as 1-c-index. U-statistics was applied to test the significance between different c-index values [22]. Nomogram was developed and calibrated following published methods [22]. Final risk group scoring was developed in four step: 1. selection of independent predictive variables; 2. fitting of a Cox model with selected variables; 3. score assignments based on regression coefficients; 4. identification of best cut-point to split the score in 3 risk groups by recursive partitioning [23]. Internal validation for step 1. and 2. was performed with bootstrap .632+ method [24,25] with B = 620 bootstrap samples and (step 2) with cross-validation [26]. Variables selected with a frequency greater than 50% were entered in the final model. Risk score categorical model obtained by recursive partitioning was internally validated by bootstrap methods applied to tree-based analysis [27]. Finally, the whole model building procedure was validated by a comprehensive leave-one-out cross validation (see Additional file 1: supplementary statistical methods). All p values are based on two-tailed tests.

## Results

### Patients characteristics

Patients characteristics are reported in Table 1. Treatment was administered according to NCI-WG indications. Deaths occurred mostly in treated patients (83%). Deaths among untreated patients aged beyond 70 years accounted for 11% of all deaths. All patients characteristics were balanced across age groups <55, 55-64, 65-4 and ≥ 75(chi-square tests), except for a greater proportion of males in the <55 age group and a greater proportion of high β<sub>2</sub> M levels and deaths events in the ≥75 age group. Kaplan-Meyer plots of OS and TTT are shown in Figure 1.

### Univariate and multivariate analysis for OS and TTT

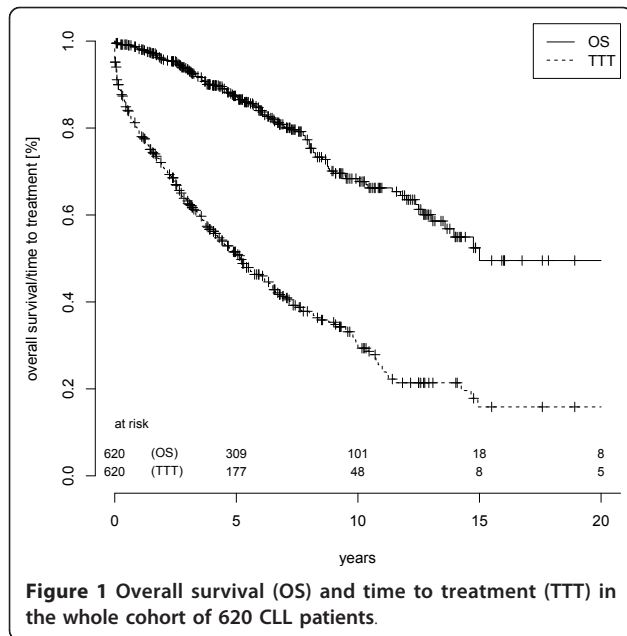
In univariate analysis for OS all clinical and biological variables were significant, except for del11q (Table 2). The effect of chemoimmunotherapy was small, without statistical significance. The effect of period of diagnosis was significant, with patients diagnosed 2000-2005 and >2005 at increasing risk compared to patients diagnosed before 2001. Based on these results, multivariate analyses were adjusted for the year of diagnosis introduced in the model as a three level stratification factor (<=2000, 2001-2005, >2005). Age dependent variations of variables effects were explored by including an age interaction term either in continuous form or as a four-group (<55,

**Table 1 Patients characteristics (n = 620)**

median age, years (range)	65 (21-92)
median ALC, x10 <sup>9</sup> /L (range)	14 (2-460)
median β <sub>2</sub> M, xULN (range)	1.06 (0.13-11.9)
LNR ≥3	25%
Rai stage	
0	48%
I-II	44%
III-IV	8%
Binet stage	
A	70%
B	22%
C	8%
Male sex	60%
CD38 expression >30%	27%
ZAP-70 expression >20%	41%
Unmutated IgVH	41%
del11q-	9%
del17p-	10%
Year of diagnosis	
<=2000	29%
2001-2005	49%
>2005	22%
Treated	53%
median TTT, years	5.2
Chemotherapy	28%
Chemoimmunotherapy	15%
missing data	10%
Dead	20%
median OS, years	15

ALC, absolute lymphocyte count; LNR, number of lymph node involved regions; ULN, upper limit of normal; β<sub>2</sub> M, beta-2 microglobulin, OS, overall survival; TTT, time to treatment. Complete data (n = 620) available for all variables, except for therapy

55-64, 65-74, ≥75) ordinal variable in multivariate models. No significant variations in hazard ratio (HR) values were found (*p* > 0.05 for all interactions). The selection of the variables entered in final model was internally validated by bootstrap .632+ method [24]. All the variables introduced in the final model were selected in more than 50% of bootstrap samples (Table 3); prediction error in this step of model building was 0.244. The final model fitting was also validated by bootstrap .632+ method, showing at this step a prediction error of 0.247. Leave-one-out cross validation [24,26]. showed that neither β<sub>2</sub> M nor gender, the least important variables, could be safely removed from the model (Table 4). Univariate and multivariate analyses of TTT, performed on the subset of Binet A patients below 70 years of age, are shown in Table 5.



**Table 3 Prognostic score for overall survival with clinical and biological risk factors and bootstrap validation**

	final model <sup>1</sup>		variable selection <sup>2</sup>		final score
	$\beta$	HR	p	%	
Age>65 years	1.23	3.43	<0.0001	100	2
Binet B	1.02	2.77	<0.0001	92	2
Binet C	1.30	3.68	<0.0001	92	3
Gender (male)	0.59	1.80	0.0038	94	1
$\beta_2M >1 \times$ ULN	0.46	1.59	0.0294	66	1
Del17p	0.72	2.06	0.0022	93	1
Unmutated IGHV	0.71	2.04	0.0003	98	1
calendar year (in strata)	-	-	-	87	-

HR: hazard ratio;  $\beta$ : Cox regression coefficient; ULN, upper limit of normal

<sup>1</sup> Final model adjusted for year of diagnosis

<sup>2</sup> Percentage of selection in 620 leave-one-out bootstrap samples. Percentages for del11, ZAP-70, CD38, LFN, ALC were respectively 28%, 21%, 15%, 24%, 46%

**Table 2 Univariate and multivariate Cox regression analysis for overall survival**

	univariate			multivariate			
	HR	p	initial model		final model		
			HR	p	HR	p	
age>65 years	2.99	<0.0001	3.53	<0.0001	3.43	<0.0001	
male sex	1.86	0.0018	1.84	0.0030	1.80	0.0038	
ALC>14 × 10 <sup>9</sup> /L	1.67	0.0062	1.34	0.17	-		
$\beta_2M >1 \times$ ULN	1.43	<0.0001	1.51	0.06	1.59	0.029	
LNR ≥3	3.06	<0.0001	1.20	0.59	-		
Binet stage		<0.0001					
A	ref		ref		ref		
B	3.20		2.19	0.0352	2.77	<0.0001	
C	4.95		2.86	0.0028	3.68	<0.0001	
Rai stage		<0.0001					
0	ref		ND				
I-II	1.66		ND				
III-IV	5.08		ND				
CD38>30%	1.73	0.0038	1.03	0.88	-		
ZAP-70>20%	1.53	0.0204	1.04	0.83	-		
Unmutated IGHV	2.46	<0.0001	2.04	0.0008	2.04	0.0003	
del17p	3.44	<0.0001	2.14	0.0015	2.06	0.0022	
del11q	1.39	0.248	ND				
Year of diagnosis		0.0130	(in model as strata)*		(in model as strata)*		
<2001	ref						
2001-2005	1.46						
>2005	2.34						
Therapy		0.106	ND				
Chemotherapy	ref						
Immunochemotherapy	0.6						

Final model obtained by stepwise backward elimination

HR: hazard ratio; ND: not done

**Table 4 Leave-one-out cross validation of the final model**

Step	covariate removed	no. of variables	log-l	AIC	cvlog-l
0	all (null model)	0	-675.7	-675.7	-846.8
1	none (final model)	6	-502.1	-509.1	-743.1
2	$\beta_2M$	5	-504.6	-510.6	-738.8
3	$\beta_2M$ and sex	4	-618.9	-623.9	-738.8

The final model included the following 6 variables: Binet stage, age > 65 years, unmutated IgVH, presence of del17p, male sex,  $\beta_2 M > ULN$   
 Log-l: log-likelihood, AIC: Akaike's information criterion (AIC); cvlog-l: cross-validated log likelihood Removal of the least important variables ( $\beta_2M$  and sex) in step 2 and 3 resulted in a reduction of the fit by at least 2 criteria, demonstrating the validity of the model with 6 variables (according to reference #26)

**Clinical-biological prognostic index**

The 4-variable clinical model previously proposed by us [8] was refitted in the present CLL cohort (see Additional file 2: Table S1). The 4-variable clinical model had a greater discriminatory power (c-index 0.72) than the 6-variable clinical model by Wierda et al. (c-index 0.62;  $p = 1.3 \times 10^{-7}$ ). According to the  $\beta$  regression coefficients, a novel clinical-biological prognostic score was developed by assigning 3 points for Binet C stage, 2 points/each for Binet B stage and age > 65 years, 1 point/each for male gender, high  $\beta_2 M$  levels, presence of an unmutated IGHV gene status or 17p deletion (Table 3). The score point distribution is reported in Figure 2a. To this

**Table 5 Univariate and multivariate analysis of TTT in Binet A patients below 70 year of age (n = 291, no missing cases)**

	univariate			multivariate			
	%	HR	p	initial model		final model	
				HR	p	HR	p
age>65 years	22	0.96	0.85	-			
male sex	56	1.01	0.97	-			
ALC>14 × 10 <sup>9</sup> /L	42	1.35	0.0974	-			
$\beta_2M > 1 \times ULN$	38	2.04	<0.0001	1.53	0.0242	1.64	0.0069
CD38>30%	21	2.46	<0.0001	1.42	0.1042	-	
ZAP-70>20%	36	2.72	<0.0001	1.39	0.1374	-	
Unmutated IGHV	32	3.60	<0.0001	2.16	0.0012	3.09	<0.0001
del17p	7	2.59	0.0015	1.37	0.31	-	
del11q	5	3.09	0.0005	2.21	0.02	1.97	0.0383
Year of diagnosis			0.85	-			
<2001	33	ref					
2001-2005	48	1.07					
>2005	19	0.89					

Final model obtained by stepwise backward elimination  
 HR: hazard ratio

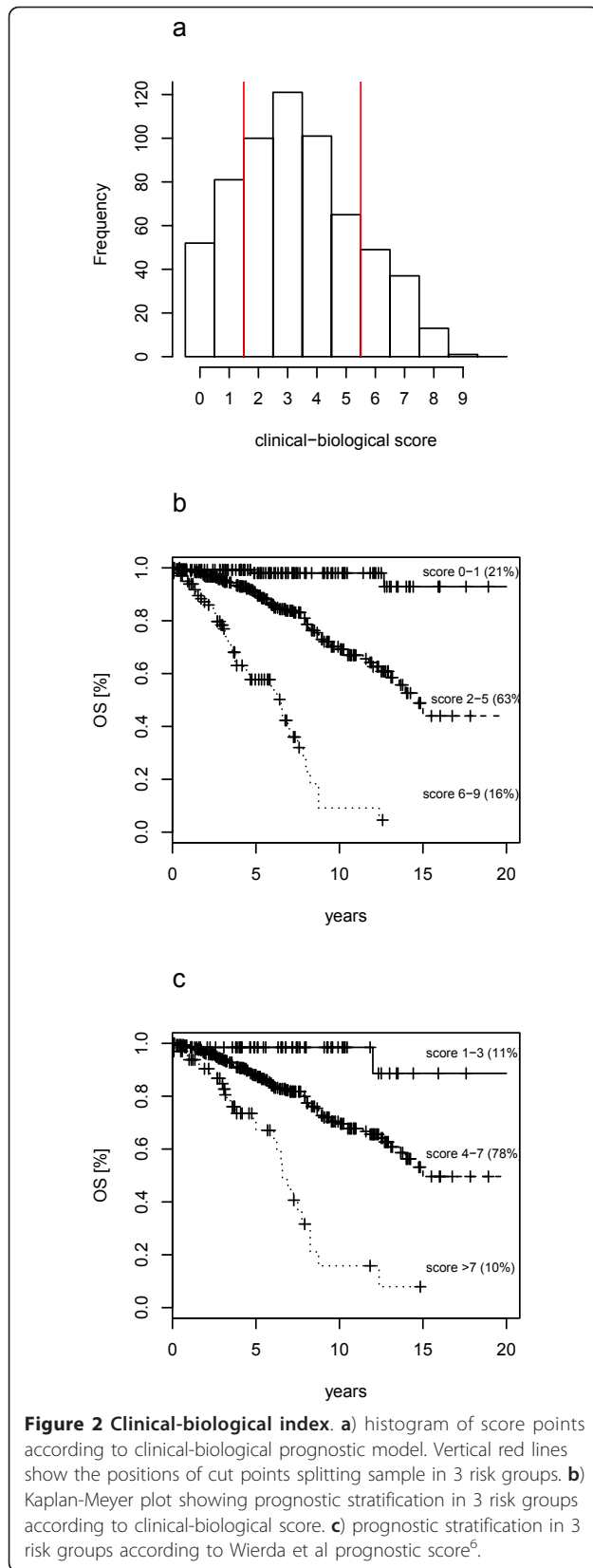
distribution we applied a recursive partitioning method [23], which yielded three prognostic groups, with score 0-1, 2-5 and 6-9. The Kaplan-Meier plots of the three risk group partitioning of the prognostic score is shown in Figure 2b, for comparison also the risk group partition by Wierda PI [3] is shown in Figure 2c. In particular, 21% of patients (score 0-1) were at low-risk, 63% (score 2-5) were at intermediate risk, and 16% of patients (score 6-9) were at high risk. Projected survival in respectively low, intermediate and high-risk groups was 98%, 90%, 58%, and 98%, 69% 9% at 5-year and 10-year, respectively. Predictive accuracies were significantly greater in the clinical-biological model, compared to the 6-variable clinical model by Wierda et al. (c-index 0.73 vs 0.62,  $p < 0.0001$ ) [3], or to the 4-variable clinical model (c-index 0.73 vs 0.72,  $p < 0.0001$ ) [8], or to Binet (c-index 0.73 vs 0.65,  $p < 0.0001$ ), or Rai (0.73 vs 0.62,  $p < 0.0001$ ) staging systems. To show the combination of predictive variables in each patient and in each group we used a heat-map plot (Figure 3). In the low risk group, comprising 133 cases, 52 patients had no adverse predictors (score 0), 50 patients were male, 16 patients had a  $\beta_2 M > 1$  and 15 patients had unmutated IGHV gene mutational status. Of note, low risk patients were never aged >65, nor had a Binet staging B or C, or were affected by a CLL bearing del17p (Figure 4). Conversely, in the high-risk group, only 3 or 4 patients, respectively, had <65 years or a Binet stage A disease; these patients, however, had all the other prognosticators in their bad configuration. Moreover, the 51 patients in Binet stage B of the high-risk group, had mostly (37/51) an unmutated IGHV gene status or high  $\beta_2 M$  (42/51) levels. Finally, the 29 patients classified in Binet stage C and belonging to the high-risk group, mostly had (26/29) high  $\beta_2 M$  levels (Figure 4). Kaplan-Meier plots of the individual variables are reported in Figure 4.

**Nomogram for estimating prognosis in individual patients**

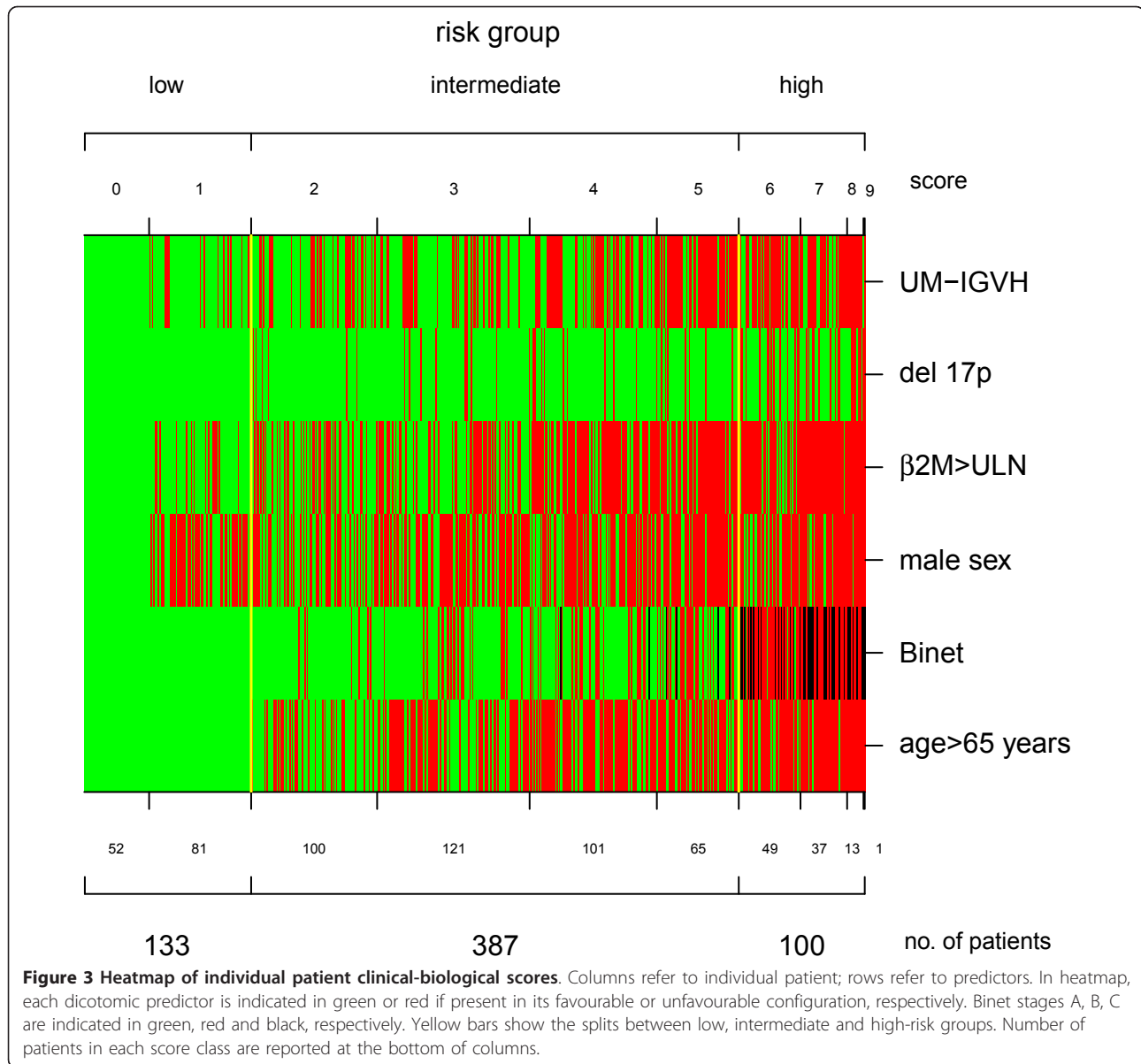
Even if individual estimates of survival, as those obtained from nomograms, are more likely affected by inaccuracy than group estimates [28], to allow individual patients survival estimation a nomogram was developed as described previously [8], based on the final model with clinical and biological prognostic factors shown in Table 3, modified using age and  $\beta_2 M$  as continuous variables (Figure 5). The clinical-biological nomogram showed a better predictive accuracy than the clinical nomogram proposed by Wierda et al. [3] (c-index respectively 0.79 and 0.76,  $p = 0.046$ ).

**Discussion**

Survival time at CLL diagnosis may be simply estimated by means of six variables, four of them clinical-demographic



(stage, LNR, sex, age) plus two quantitative assays (ALC,  $\beta 2 M$ ) [3,4,8]. Two independent studies [4,8] failed to confirm the predictive power of ALC. A simplification of the PI from six to four variables was previously proposed by us as capable to stratify patients with equal or better performance [8]. In the present study, the aim was to improve these clinical prognostic models by adding information on biological variables, in particular those identified by the updated NCI-WG guidelines [1] as mandatory at least in the context of clinical trials. We demonstrated that PI for OS prediction based on clinical variables could be improved only by IGHV gene mutational status and del17p, but not CD38, ZAP-70 and del11q. The lack of prognostic power of CD38 and ZAP-70 is not totally unexpected. Similar findings have been found either analyzing OS [13,14,29] or TTT [30,31], although none of these reports included both biological and clinical prognosticators in a comprehensive clinical-biological PI, as proposed here. It has been often emphasized that assays evaluating ZAP-70 and, at least in part, CD38 expression suffer from inherent weakness and lack of proper standardization [13,32-34]. As a consequence, considerable analytic variability still exists on measurement of these parameters [35]. In this regard, such a variability could be more relevant in multi-center series like that investigated in this study. Indeed, at variance with our results, ZAP-70 or CD38 turned out to be among the strongest prognosticators in mono-center studies [36,37], with time-to-first-treatment or time-to-progression as end-points. Lack of reproducibility and standardization of biological markers can affect the results of prognostic tools applied at different institutions. Our model might be less subjected to this bias, since it includes IGHV and del17p, but not the less standardized measurements of CD38 and ZAP-70. Krober et al. [13,14] have previously showed the importance of molecular risk factors in CLL by stratifying patients by IGHV gene mutational status and presence of high-risk genomic aberrations (del17p or del11q), although authors failed to test if their model was independent of clinical and demographic risk factors. Here we had the chance to integrate the data by Krober et al. [13,14] by showing the independent prognostic relevance of UM IGHV gene status and del17p in a model that also included clinical and demographic risk factors. Of note, the effect of these molecular prognosticators was found to be additive and of equal importance. The unexpected limited relevance of molecular risk factors in our model and the lacking predictive power of CD38 and ZAP-70, may be in part justified by a relative small number of deaths and a median follow up of only 5 years, despite the large number of patients collected. Future analyses with longer follow-up data and more events might regain significance to some

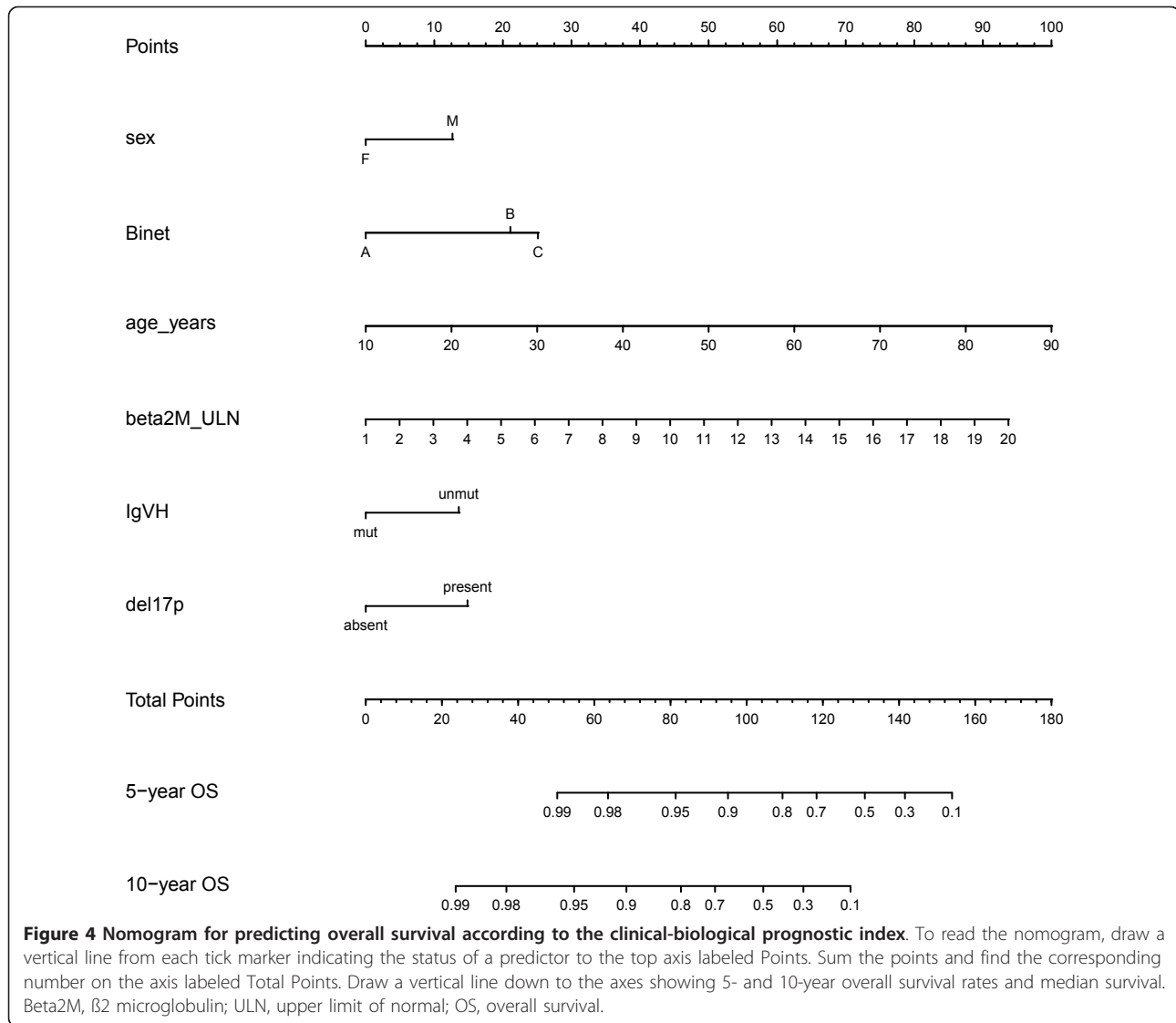


**Figure 3 Heatmap of individual patient clinical-biological scores.** Columns refer to individual patient; rows refer to predictors. In heatmap, each dicotomic predictor is indicated in green or red if present in its favourable or unfavourable configuration, respectively. Binet stages A, B, C are indicated in green, red and black, respectively. Yellow bars show the splits between low, intermediate and high-risk groups. Number of patients in each score class are reported at the bottom of columns.

biological variables showing the need to update the score. Compared to our previous clinical model [8], we confirmed the value of  $\beta 2 M$ , although with the smallest coefficient and the weakest level of significance. We had no data to adjust for renal function impairment, particularly in aged patients, or for other comorbidities. However,  $\beta 2 M$  was shown to be important in other retrospective and prospective studies [38-40]. The value of prognostic factors in aged CLL patients has been recently criticized by showing that FISH aberrations (del11q or del 17q) and IGVH lost their predictive power for OS in patients aged above 75 years [41]. In our CLL series, we specifically addressed this issue by testing age dependent variations of the predictive power of all the variables included in the

final model. No significant interaction effect was found for age. We found a greater proportion of death events in the oldest age group. The risk of death in this group may be influenced by other factors, not related to disease. However, epidemiological data from cancer registry show the frequent occurrence of late deaths attributable to CLL also in aged patients group [42,43]. The effect of chemoimmunotherapy with anti-CD20 was small, with a non significant trend for a longer survival ( $p = 0.10$ ). Results of the present study differed in part from those of a randomized prospective trial [40], where Binet stage and gender, in addition to del11q, CD38 and ZAP-70, all failed to be independent prognostic markers in a multivariate model for OS which also included IGHV gene mutational status,



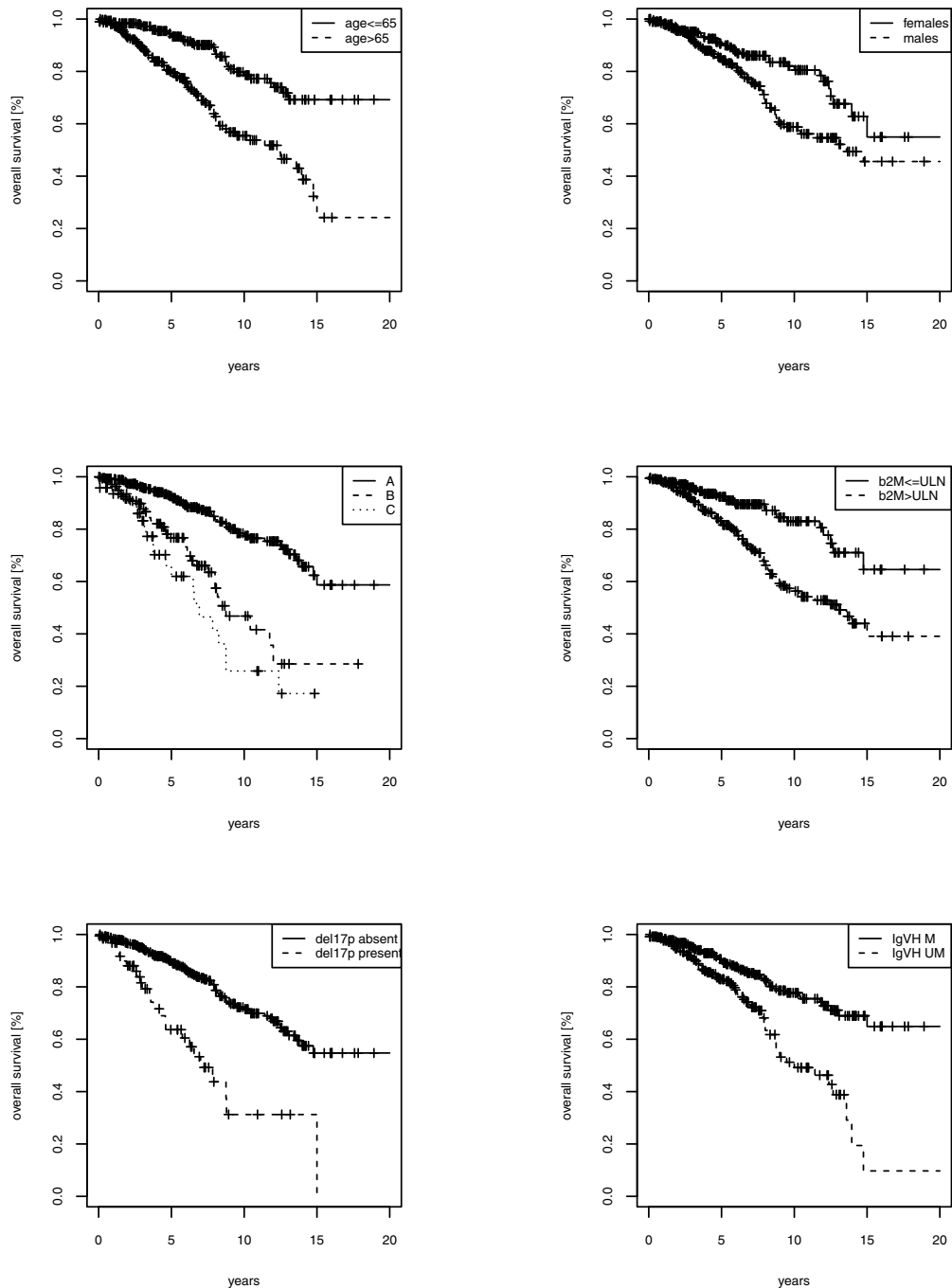


usage of IGHV3-21 gene, del17p, age and  $\beta$ 2 M. Notably, this study, which investigated a population of selected patients in need of treatment (i.e. with active or progressive disease), selected del17p as the strongest risk factor [40]. Conversely, in our retrospective study dealing with untreated patients at diagnosis, the relative weight of del17p appeared equal or lower than that of other variables. Therefore, while the model described in [40] seems to better predict outcome of CLL patients with progressive or active disease, our model appears to be more suited for estimating survival in untreated patients at diagnosis or before clinical progression. The analysis of TTT in Binet A patients below 70 years of age showed that demographic factors (age, gender), important for OS estimation, lost their prognostic power for TTT. Conversely, It might be expected that biological prognosticator, particularly those with limited or even absent significance in the OS

analyses, would have gained more importance in the TTT analyses in this subset of patients. However only IGHV and  $\beta$ 2 M confirmed their role, with IGHV the most important predictor of TTT. CD38 and ZAP-70 were again not significant, in spite of a good representation of positive cases (respectively 21% and 36%); del17p lost its power whereas del11q gained significance. In this case the low percentage of positive cases may, at least in part, justify the fluctuating results.

### Conclusions

In the present study we showed that the survival of untreated CLL patients may be estimated by a limited set of clinical and biological variables, integrated in a prognostic index and in a nomogram, allowing group and individual estimation, respectively. CD38, ZAP-70 and del11q gave redundant prognostic information.



**Figure 5** Kaplan-Meier plots of overall survival (OS) for the 6 variable of the clinical-prognostic index.

Both the proposed PI and the nomogram were only internally validated. Even in internally validated models, the performance of prognostic tools may be influenced or biased by the composition of the population in which

they are developed and lack of standardization of biological variables. Therefore the prognostic tools proposed should be used with caution until externally validated on independent, prospective patient series.

## Additional material

**Additional file 1: Supplementary statistical methods.** Details of validation procedures for the whole prognostic model.

**Additional file 2: Table S1.** Previously proposed prognostic score for overall survival with clinical risk factors.

### Abbreviations

ALC: absolute lymphocyte count;  $\beta$ 2M: beta2-microglobulin; FISH: fluorescence in-situ hybridization; LNR: number of involved lymph node regions; HR: hazard ratio; IGHV: immunoglobulin heavy chain variable gene segments; OS: overall survival; PI: prognostic index; TTT: time to treatment; ULN: upper limit of normal.

### Acknowledgements

Authors wish to thank dott. Michela Ternani, Institute of Haematology, Catholic University of the Sacred Heart, Rome, Italy, for clinical data collection. Supported in part by: Ministero della Salute (Ricerca Finalizzata I.R. C.C.S. and "Alleanza Contro il Cancro"), Rome; Associazione Italiana contro le Leucemie, linfomi e mielomi (A.I.L.), Venezia Section, Pramaggiore Group; Ricerca Scientifica Applicata, Regione Friuli Venezia Giulia, Trieste ("Linfonet" project); Associazione Italiana per la Ricerca sul Cancro (Investigator Grant IG-8701), Milan, Italy; Helmut Horten Foundation, San Salvatore Foundation, Fondazione per la Ricerca e la Cura sui Linfomi (Lugano, Switzerland); Progetto FIRB-Programma "Futuro in Ricerca" 2008 and PRIN 2008, MIUR, Rome, Italy; AIRC, Special Program Molecular Clinical Oncology, 5 × 1000, No. 10007, Milan, Italy; Progetto Giovani Ricercatori 2008 and Ricerca Sanitaria Finalizzata, Ministero della Salute, Rome, Italy; Ricerca Sanitaria Finalizzata, Regione Piemonte, Torino, Italy. Financial disclosures: none.

### Author details

<sup>1</sup>Clinical and Experimental Onco-Hematology Unit, IRCCS Centro di Riferimento Oncologico, via Franco Gallini 2, 33170 Aviano (PN), Italy. <sup>2</sup>Division of Hematology, Amedeo Avogadro University of Eastern Piedmont, Novara, Italy. <sup>3</sup>Division of Hematology and Transplant, University of Siena, Siena, Italy. <sup>4</sup>Hematology, Tor Vergata University, Rome, Italy. <sup>5</sup>Laboratory of Experimental Oncology and Lymphoma Unit, Oncology Institute of Southern Switzerland (IOSI), Bellinzona, Switzerland. <sup>6</sup>Department of Oncology/Hematology, Niguarda Ca'Granda Hospital, Milan, Italy. <sup>7</sup>Department of Internal Medicine and Haematology, Maggiore Hospital, Trieste, Italy. <sup>8</sup>Onco-Hematology Department, IRCCS Centro di Riferimento Oncologico della Basilicata, Rionero in Vulture (Pz), Italy. <sup>9</sup>CNR Campus "A. Buzzati-Traverso", ICGEB Outstation-Monterotondo, Rome, Italy. <sup>10</sup>Department of Medical Sciences, Section of Internal Medicine and Hematology, University of Modena and Reggio Emilia, Modena, Italy. <sup>11</sup>Institute of Haematology, Catholic University of the Sacred Heart, Rome, Italy.

### Authors' contributions

PB drafted the manuscript and performed statistical analysis, DR acquired data and helped to perform statistical analysis and to draft the manuscript, FF, GDP, FB, EZ, MM, GP, GDA, DE, RM and FL acquired and interpreted data and participated in the design of the study, GG, VG and LL participated in the design of the study and helped to draft the manuscript.

### Competing interests

The authors declare that they have no competing interests.

Received: 22 June 2011 Revised: 9 January 2012

Accepted: 30 January 2012 Published: 30 January 2012

### References

- Hallek M, Cheson BD, Catovsky D, Caligaris-Cappio F, Dighiero G, Dohner H, Hillmen P, Keating MJ, Montserrat E, Rai KR, Kipps TJ: International Workshop on Chronic Lymphocytic Leukemia: **Guidelines for the diagnosis and treatment of chronic lymphocytic leukemia: a report from the International Workshop on Chronic Lymphocytic Leukemia updating the National Cancer Institute-Working Group 1996 guidelines.** *Blood* 2008, **111**(12):5446-5456.

- Zenz T, Eichhorst B, Busch R, Denzel T, Habe S, Winkler D, Buhler A, Edelmann J, Bergmann M, Hopfinger G, Hensel M, Hallek M, Dohner H, Stilgenbauer S: **TP53 mutation and survival in chronic lymphocytic leukemia.** *J Clin Oncol* 2010, **28**(29):4473-4479.
- Wierda WG, O'Brien S, Wang X, Faderl S, Ferrajoli A, Do KA, Cortes J, Thomas D, Garcia-Manero G, Koller C, Beran M, Giles F, Ravandi F, Lerner S, Kantarjian H, Keating M: **Prognostic nomogram and index for overall survival in previously untreated patients with chronic lymphocytic leukemia.** *Blood* 2007, **109**(11):4679-4685.
- Shanafelt TD, Jenkins G, Call TG, Zent CS, Slager S, Bowen DA, Schwager S, Hanson CA, Jelinek DF, Kay NE: **Validation of a new prognostic index for patients with chronic lymphocytic leukemia.** *Cancer* 2009, **115**(2):363-372.
- Gonzalez Rodriguez AP, Gonzalez Garcia E, Fernandez Alvarez C, Gonzalez Huerta AJ, Gonzalez Rodriguez S: **B-chronic lymphocytic leukemia: epidemiological study and comparison of MDACC and GIMENA prognostic indexes.** *Med Clin (Barc)* 2009, **133**(5):161-166.
- Molica S, Di Raimondo F, Cutrona G, Fabris S, Mauro F, Brugiatielli M, Baldini L, Musto P, Sacchi S, Corteleszi A, Foa R, Neri A, Federico M, Ferrarini M, Morabito F, Gruppo Italiano Studio Linfomi (GISTL): **Clinical categories identified by a new prognostic index reflect biological characteristics of patients in early chronic lymphocytic leukemia: The Gruppo Italiano Studio Linfomi (GISTL) experience.** *Leuk Res* 2010, **34**(8): e217-e218.
- Molica S, Mauro FR, Callea V, Giannarelli D, Lauria F, Rotoli B, Corteleszi A, Liso V, Foa R: **The utility of a prognostic index for predicting time to first treatment in early chronic lymphocytic leukemia: the GIMEMA experience.** *Haematologica* 2010, **95**(3):464-469.
- Bulian P, Tarnani M, Rossi D, Forconi F, Del Poeta G, Bertoni F, Zucca E, Montillo M, Pozzato G, Deaglio S, D'Arena G, Efremov D, Marasca R, Lauria F, Gattei V, Gaidano G, Laurenti L: **Multicentre validation of a prognostic index for overall survival in chronic lymphocytic leukaemia.** *Hematol Oncol* 2011, **29**(2):91-99.
- Therneau Terry M, Patricia M: *Modelling Survival Data: Extending The Cox Model* New York Berlin Heidelberg: Springer-Verlag; 2000.
- Bomben R, Dal Bo M, Capello D, Forconi F, Maffei R, Laurenti L, Rossi D, Del Principe M, Zucchetto A, Bertoni F, Rossi FM, Bulian P, Cattarossi I, Ilariucci F, Sozzi E, Spina V, Zucca E, Degan M, Lauria F, Del Poeta G, Efremov DG, Marasca R, Gaidano G, Gattei V: **Molecular and clinical features of chronic lymphocytic leukaemia with stereotyped B cell receptors: results from an Italian multicentre study.** *Br J Haematol* 2009, **144**(4):492-506.
- Dohner H, Stilgenbauer S, Fischer K, Bentz M, Lichter P: **Cytogenetic and molecular cytogenetic analysis of B cell chronic lymphocytic leukemia: specific chromosome aberrations identify prognostic subgroups of patients and point to loci of candidate genes.** *Leukemia* 1997, **11**(Suppl 2):S19-S24.
- Dohner H, Stilgenbauer S, Benner A, Leupolt E, Krober A, Bullinger L, Dohner K, Bentz M, Lichter P: **Genomic aberrations and survival in chronic lymphocytic leukemia.** *N Engl J Med* 2000, **343**(26):1910-1916.
- Krober A, Seiler T, Benner A, Bullinger L, Bruckle E, Lichter P, Dohner H, Stilgenbauer S: **V(H) mutation status, CD38 expression level, genomic aberrations, and survival in chronic lymphocytic leukemia.** *Blood* 2002, **100**(4):1410-1416.
- Krober A, Bloehdorn J, Hafner S, Buhler A, Seiler T, Kienle D, Winkler D, Bangertner M, Schlenk RF, Benner A, Lichter P, Dohner H, Stilgenbauer S: **Additional genetic high-risk features such as 11q deletion, 17p deletion, and V3-21 usage characterize discordance of ZAP-70 and VH mutation status in chronic lymphocytic leukemia.** *J Clin Oncol* 2006, **24**(6):969-975.
- Rassenti LZ, Huynh L, Toy TL, Chen L, Keating MJ, Gribben JG, Neuberg DS, Flinn IW, Rai KR, Byrd JC, Kay NE, Greaves A, Weiss A, Kipps TJ: **ZAP-70 compared with immunoglobulin heavy-chain gene mutation status as a predictor of disease progression in chronic lymphocytic leukemia.** *N Engl J Med* 2004, **351**(9):893-901.
- Crespo M, Bosch F, Villamor N, Bellosillo B, Colomer D, Rozman M, Marce S, Lopez-Guillermo A, Campo E, Montserrat E: **ZAP-70 expression as a surrogate for immunoglobulin-variable-region mutations in chronic lymphocytic leukemia.** *N Engl J Med* 2003, **348**(18):1764-1775.
- Zucchetto A, Bomben R, Bo MD, Nanni P, Bulian P, Rossi FM, Del Principe M, Santini S, Del Poeta G, Degan M, Gattei V: **ZAP-70 expression in B-cell chronic lymphocytic leukemia: evaluation by external (isotypic**

- or internal (T/NK cells) controls and correlation with IgV(H) mutations. *Cytometry B Clin Cytom* 2006, **70**(4):284-292.
18. Rossi FM, Del Principe MI, Rossi D, Irno Consalvo M, Luciano F, Zucchetto A, Bulian P, Bomben R, Dal Bo M, Fangazio M, Benedetti D, Degan M, Gaidano G, Del Poeta G, Gattei V: **Prognostic impact of ZAP-70 expression in chronic lymphocytic leukemia: mean fluorescence intensity T/B ratio versus percentage of positive cells.** *J Transl Med* 2010, **8**:23.
  19. Damle RN, Wasil T, Fais F, Ghiotto F, Valetto A, Allen SL, Buchbinder A, Budman D, Dittmar K, Kolitz J, Lichtman SM, Schulman P, Vinciguerra VP, Rai KR, Ferrarini M, Chiorazzi N: **Ig V gene mutation status and CD38 expression as novel prognostic indicators in chronic lymphocytic leukemia.** *Blood* 1999, **94**(6):1840-1847.
  20. Gattei V, Bulian P, Del Principe MI, Zucchetto A, Maurillo L, Buccisano F, Bomben R, Dal-Bo M, Luciano F, Rossi FM, Degan M, Amadori S, Del Poeta G: **Relevance of CD49d protein expression as overall survival and prognostic disease prognosticator in chronic lymphocytic leukemia.** *Blood* 2008, **111**(2):865-873.
  21. Cheson BD, Pfistner B, Juweid ME, Gascoyne RD, Specht L, Horning SJ, Coiffier B, Fisher RI, Hagenbeek A, Zucca E, Rosen ST, Stroobants S, Lister TA, Hoppe RT, Dreyling M, Tobinai K, Vose JM, Connors JM, Federico M, Diehl V, International Harmonization Project on Lymphoma: **Revised response criteria for malignant lymphoma.** *J Clin Oncol* 2007, **25**(5):579-586.
  22. Harrell FE: *Regression Modeling Strategies* New York: Springer; 2001.
  23. Everitt BS, Hothorn T: *A Handbook of Statistical Analyses Using R* Boca Raton: Chapman & Hall/CRC; 2006.
  24. Bradley Efron RJ: *An Introduction to the Bootstrap* Chapman & Hall/CRC; 1993.
  25. Harrell FE Jr, Lee KL, Mark DB: **Multivariable prognostic models: issues in developing models, evaluating assumptions and adequacy, and measuring and reducing errors.** *Stat Med* 1996, **15**(4):361-387.
  26. Verweij PJ, Van Houwelingen HC: **Cross-validation in survival analysis.** *Stat Med* 1993, **12**(24):2305-2314.
  27. Ishwaran H, Kogalur U, Blackstone E, Lauer M: **Random Survival Forests.** *Ann Appl Stat* 2008, **2**:841.
  28. Altman DG, Royston P: **What do we mean by validating a prognostic model?** *Stat Med* 2000, **19**(4):453-473.
  29. Oscier DG, Gardiner AC, Mould SJ, Glide S, Davis ZA, Ibbotson RE, Corcoran MM, Chapman RM, Thomas PW, Copplestone JA, Orchard JA, Hamblin TJ: **Multivariate analysis of prognostic factors in CLL: clinical stage, IGHV gene mutational status, and loss or mutation of the p53 gene are independent prognostic factors.** *Blood* 2002, **100**(4):1177-1184.
  30. Morilla A, Gonzalez de Castro D, Del Giudice I, Osuji N, Else M, Morilla R, Brito Babapulle V, Rudenko H, Matutes E, Dearden C, Catovsky D, Morgan GJ: **Combinations of ZAP-70, CD38 and IGHV mutational status as predictors of time to first treatment in CLL.** *Leuk Lymphoma* 2008, **49**(11):2108-2115.
  31. Orlandi EM, Pascutto C, Zibellini S, Pochintesta L, Vanelli L: **Biological markers and prognostic scoring systems in chronic lymphocytic leukaemia.** *Br J Haematol* 2009, **147**(3):402-404.
  32. Hamblin TJ: **Prognostic markers in chronic lymphocytic leukaemia.** *Best Pract Res Clin Haematol* 2007, **20**(3):455-468.
  33. Ghia P, Guida G, Scielzo C, Geuna M, Caligaris-Cappio F: **CD38 modifications in chronic lymphocytic leukemia: are they relevant?** *Leukemia* 2004, **18**(10):1733-1735.
  34. Marti G, Orfao A, Goolsby C: **ZAP-70 in CLL: towards standardization of a biomarker for patient management: history of clinical cytometry special issue.** *Cytometry B Clin Cytom* 2006, **70**(4):197-200.
  35. Van Bockstaele F, Verhasselt B, Philippe J: **Prognostic markers in chronic lymphocytic leukemia: a comprehensive review.** *Blood Rev* 2009, **23**(1):25-47.
  36. Rassenti LZ, Jain S, Keating MJ, Wierda WG, Grever MR, Byrd JC, Kay NE, Brown JR, Gribben JG, Neuberger DS, He F, Greaves AW, Rai KR, Kipps TJ: **Relative value of ZAP-70, CD38, and immunoglobulin mutation status in predicting aggressive disease in chronic lymphocytic leukemia.** *Blood* 2008, **112**(5):1923-1930.
  37. Letestu R, Levy V, Eclache V, Baran-Marszak F, Vaur D, Naguib D, Schischmanoff O, Katsahian S, Nguyen-Khac F, Davi F, Merle-Beral H, Troussard X, Ajchenbaum-Cymbalista F: **Prognosis of Binet stage A chronic lymphocytic leukemia patients: the strength of routine parameters.** *Blood* 2010, **116**(22):4588-4590.
  38. Eichhorst BF, Busch R, Stilgenbauer S, Stauch M, Bergmann MA, Ritgen M, Kranzhofer N, Rohrer R, Soling U, Burkhard O, Westermann A, Goede V, Schweighofer CD, Fischer K, Fink AM, Wendtner CM, Brittinger G, Dohner H, Emmerich B, Hallek M, German CLL Study Group (GCLLSG): **First-line therapy with fludarabine compared with chlorambucil does not result in a major benefit for elderly patients with advanced chronic lymphocytic leukemia.** *Blood* 2009, **114**(16):3382-3391.
  39. Wierda WG, O'Brien S, Wang X, Faderl S, Ferrajoli A, Do KA, Garcia-Manero G, Cortes J, Thomas D, Koller C, Burger J, Lerner S, Kantarjian H, Keating M: **Characteristics associated with important clinical end points in patients with chronic lymphocytic leukemia at initial treatment.** *J Clin Oncol* 2009, **27**(10):1637-1643.
  40. Oscier D, Wade R, Davis Z, Morilla A, Best G, Richards S, Else M, Matutes E, Catovsky D, Chronic Lymphocytic Leukaemia Working Group, UK National Cancer Research Institute: **Prognostic factors identified three risk groups in the LRF CLL4 trial, independent of treatment allocation.** *Haematologica* 2010, **95**(10):1705-1712.
  41. Shanafelt TD, Rabe KG, Kay NE, Zent CS, Jelinek DF, Reinalda MS, Schwager SM, Bowen DA, Slager SL, Hanson CA, Call TG: **Age at diagnosis and the utility of prognostic testing in patients with chronic lymphocytic leukemia.** *Cancer* 2010, **116**(20):4777-4787.
  42. Brenner H, Gondos A, Pulte D: **Trends in long-term survival of patients with chronic lymphocytic leukemia from the 1980s to the early 21st century.** *Blood* 2008, **111**(10):4916-4921.
  43. Kristinsson SY, Dickman PW, Wilson WH, Caporaso N, Bjorkholm M, Landgren O: **Improved survival in chronic lymphocytic leukemia in the past decade: a population-based study including 11,179 patients diagnosed between 1973-2003 in Sweden.** *Haematologica* 2009, **94**(9):1259-1265.

doi:10.1186/1479-5876-10-18

**Cite this article as:** Bulian et al.: IGHV gene mutational status and 17p deletion are independent molecular predictors in a comprehensive clinical-biological prognostic model for overall survival prediction in chronic lymphocytic leukemia. *Journal of Translational Medicine* 2012 **10**:18.

**Submit your next manuscript to BioMed Central and take full advantage of:**

- Convenient online submission
- Thorough peer review
- No space constraints or color figure charges
- Immediate publication on acceptance
- Inclusion in PubMed, CAS, Scopus and Google Scholar
- Research which is freely available for redistribution

Submit your manuscript at  
www.biomedcentral.com/submit

