

BMJ Open Scoping review of the literature to ascertain how follow-up care is provided to major trauma patients post discharge from acute care

Elizabeth Wake ^{1,2}, Jamie Ranse,^{3,4} Andrea P Marshall^{4,5}

To cite: Wake E, Ranse J, Marshall AP. Scoping review of the literature to ascertain how follow-up care is provided to major trauma patients post discharge from acute care. *BMJ Open* 2022;**12**:e060902. doi:10.1136/bmjopen-2022-060902

► Prepublication history and additional supplemental material for this paper are available online. To view these files, please visit the journal online (<http://dx.doi.org/10.1136/bmjopen-2022-060902>).

Received 11 January 2022
Accepted 22 August 2022



© Author(s) (or their employer(s)) 2022. Re-use permitted under CC BY-NC. No commercial re-use. See rights and permissions. Published by BMJ.

¹Trauma Service, Gold Coast University Hospital, Southport, Queensland, Australia

²School of Medicine, Griffith University, Southport, Queensland, Australia

³School of Nursing and Midwifery, Griffith University, Gold Coast, Queensland, Australia

⁴Menzies Health Institute Queensland, Griffith University, Gold Coast Campus, Queensland, Australia

⁵Nursing, Midwifery Education and Research Unit, Gold Coast Hospital and Health Service, Southport, Queensland, Australia

Correspondence to

Elizabeth Wake;
elizabeth.wake@health.qld.gov.au

ABSTRACT

Objectives Survival following traumatic injury has increased, requiring ongoing patient follow-up. While longitudinal outcomes of trauma patients are reported, little is known about optimal delivery of follow-up service for this group. The aim of this scoping review was to identify and describe the structure, process and outcomes of postdischarge follow-up services for patients who sustained major trauma.

Evidence review This scoping review was conducted by searching CINAHL, MEDLINE and EMBASE databases. Articles were screened by three independent reviewers. The data of selected articles were organised in the categories of the Donabedian quality framework: structure, processes and outcomes.

Results Twenty-six articles were included after screening by title/abstract then full text against the inclusion/exclusion criteria; 92% (n=24) were from the USA. Follow-up services were provided by designated trauma centres and delivered by a mixture of health disciplines. Delivery of follow-up was multimodal (in person/telehealth). Protocols and guidelines helped to deliver follow-up care for non-physician led services. Ongoing health issues including missed injuries, pain and infection were identified. No standardised criteria were established to determine recipients, the timing or frequency of follow-up was identified. Patients who engaged with follow-up services were more likely to participate in other health services. Patients reported satisfaction with follow-up care.

Conclusion There are wide variations in how follow-up services for major trauma patients are provided. Further evaluation should focus on patient, family and organisational outcomes. Identifying who is most likely to benefit, when and how follow-up care is delivered are important next steps in improving outcomes.

INTRODUCTION

Worldwide, traumatic injury kills 4.4 million people annually, which accounts for almost 8% of global mortality.¹ Specialised trauma centres and well-organised emergency services (Trauma Systems) have assisted in reducing trauma-related mortality by up to 25%.^{2,3} This reduction has led to an increase in survivors of traumatic injury; however, this

STRENGTHS AND LIMITATIONS OF THIS STUDY

- ⇒ The review contains a robust search strategy devised in conjunction with an experienced librarian using multiple databases to ensure a comprehensive search was undertaken.
- ⇒ Following a published scoping review framework, the screening process (title and abstract and full text) was performed by three reviewers using a recognised software review programme; the review team worked independently of each other during the selection process to ensure integrity in the selection of the articles. We did perform a double identification of articles to include but we did not undertake double data extraction. To compensate for this, one author checked 20% of the included articles to ensure consistency and comprehensiveness of the data extracted.
- ⇒ Only published articles were included, and no search of grey literature was undertaken. A preliminary review of grey literature (such as hospital websites) was undertaken prior to formalising the inclusion/exclusion criteria identified limited extractable information in relation to the S/P/O format, out-of-date information displayed and follow-up services not identified when it was known that a follow-up service existed. It was beyond the scope of this review to contact individual healthcare institutions to retrieve information; however, this has been identified as a deficit and is the focus of future work.

is not without consequences for both patients, families and health services. Many survivors incur temporary or permanent disabilities⁴ with long-lasting physical limitations having a major impact on quality of life.⁵ For non-fatal traumatic injury, it is estimated there are dozens of other hospitalisations, hundreds of emergency department (ED) visits and thousands of doctors' appointments/consultations.¹ It has been suggested that up to 17% of patients discharged from a trauma service have ongoing significant health issues.⁶

Increased survival from traumatic injury has led to a higher demand for follow-up

services when patients are discharged from hospital. Further, injured patients have greater health service utilisation after hospital discharge when compared with the general hospitalised population and this health service resource use remains elevated for several years after injury.² The ongoing health issues experienced by trauma patients have been linked to increased healthcare expenditure.⁷ While these findings largely refer to patients with major traumatic injuries, as defined by an Injury Severity Score (ISS)⁸ ≥ 12 ⁹ or ISS ≥ 15 ,^{10 11} patients with minor to moderate injuries (ISS < 12 or an ISS < 15) can also experience ongoing physical and psychological problems and require ongoing support mechanisms to allow them to return to their preinjury health status.¹² A detailed description of the Injury Severity Score can be found in online supplemental file 1.

Injured patients have the best chance of recovery if a trauma system performs well and is effectively integrated into the wider health and social care systems.¹³ For patients with traumatic injury, follow-up after hospital discharge is commonly performed by general practitioners (GPs) who have little experience or expertise with recovery after trauma and maybe ill-equipped to address ongoing treatment questions from patients and their families. Patients who have experienced traumatic injury report that GPs have little understanding of their needs and that this has resulted in an increased level of dissatisfaction with post-discharge care.¹⁴

While the literature contains a wealth of information in relation to the longitudinal health-related outcomes for patients with traumatic injury, there is a dearth of information relating to the immediate postdischarge recovery period. Designated trauma clinics to address the complex post discharge needs following traumatic injury is one strategy to fill this gap. In some areas of the USA, trauma clinics have been mandated¹⁵; however, this is not a universal. In Australia and New Zealand, trauma follow-up clinics have historically been managed by the specialist surgical team responsible for the major injury,¹⁶ such as neurosurgical clinics following Traumatic Brain Injuries (TBI). This diverse approach to follow-up care following traumatic injury raises many questions about services provision and models of care and how these impact outcomes for patients and their families, as well as for healthcare organisations.

The purpose of this scoping review is to identify and describe what has been reported in the literature regarding the structure, process and outcomes of postdischarge follow-up services for patients who have sustained major trauma. The following research question was formulated: how are follow-up services delivered to patients of any age with major trauma after hospital discharge described in the literature?

METHODS

A scoping review approach was used as this methodology allows for a determination of the state of the current

evidence and the identification of any potential gaps within the current evidence base.¹⁷ The framework by Arskey and O'Malley¹⁷ was used to guide the approach to the review and the Preferred Reporting Items for Systematic Reviews and Meta-Analyses extension for Scoping Reviews statement for the reporting of scoping reviews was followed when reporting this review.¹⁸

Identification of relevant studies

Search strategy

A systematic literature search was undertaken using three healthcare databases including the Cumulative Index to Nursing and Allied Health Literature (CINAHL via OVID), PubMed and Medical Literature Analysis and Retrieval System Online (MEDLINE via OVID). The search was undertaken from inception to June 2021. Forward and backward citation searching of included articles was undertaken to identify additional literature. Duplicate publications were removed prior to assessing for eligibility (see online supplemental file 2).

Study selection

Eligibility criteria

All types of published research reports were included to allow for comprehensive reporting.

Articles were eligible for inclusion where the focus was on patients of any age with major trauma; engaging with any type of service delivery of health-related care following discharge from hospital; involved any health professional and any method of service provision (ie, face to face or telehealth) and included a follow-up component focusing on improving clinical care and/or patient outcomes. Descriptors such as 'major', 'severe', 'severely injured', 'polytrauma', 'severely injured' and 'Injury Severity Score' ≥ 12 as per Australian Trauma Registry⁹ were used to identify articles where the focus was on patients who had sustained a major traumatic injury.

Articles were excluded if they reported military or veterans suffering from trauma; physical trauma resulting from domestic and/or sexual violence and physical trauma resulting from self-harm because these groups often require and receive specialised follow-up services due to the nature of the trauma; therefore, these services may not be applicable to the wider general trauma population. Further exclusion criteria are patients suffering from psychological trauma where there was no component of physical injury and patients attending fracture clinic for isolated limb trauma and articles where only the abstract could be obtained.

Study selection procedure

Eligible articles were identified through two phases using Rayyan.¹⁹ In phase one, the reviewers (EW, JR, APM) independently reviewed the titles and abstract of the retrieved publications and selected articles that met the inclusion criteria. In the second phase, the full texts of the remaining articles were reviewed following the same process. Disagreements about study inclusion and

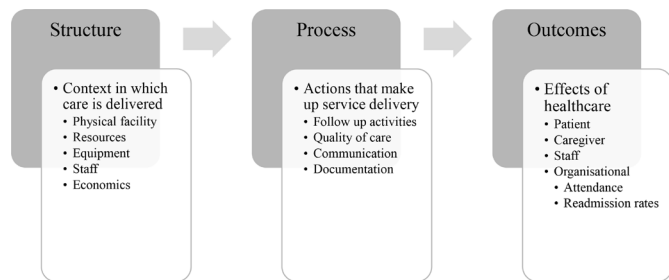


Figure 1 Donabedian model.

exclusion were discussed and resolved through consensus between all authors.

The reference lists of all selected articles were examined using forward and backward citation searching, against the inclusion/exclusion criteria using the above procedure.

Charting the data

For the selected articles, data related to the structure, process or outcomes were systematically charted into a form developed in Microsoft Excel. Data included: organisational elements (layout, resources, equipment) healthcare staff involved and type of follow-up service; delivery of care activities (physical examination, referrals, medical imaging review) and quality of care provided; and outcomes including patient and family and organisational (appointments, readmission rates). Data extraction was completed by a member of the review team (EW) and checked by with APM or JR.

Collating, summarising and reporting the results

The data of the selected articles were organised into the three categories of Donabedian quality framework (figure 1).²⁰ The framework is described as a conceptual model and assumes that healthcare quality should be based on three components: structure (the context in which the care is delivered); process (the combination of the actions that make up the service delivery) and the

outcomes (the effects of the healthcare).²⁰ Each component of the model has a direct influence on the next.²¹

The Donabedian model framework has been used to assess the quality of care delivered across several areas including ED triage processes,²² palliative care for dementia patients,²³ and its use is advocated by NHS Improvement²⁴ and the Royal College of Surgeons of England.²⁵

Studies were assessed by the review team for methodological rigour. All studies were included in the review regardless of quality. Study quality was determined using the CASP²⁶ Quality checklists (see online supplemental file 3 and 4).

Patient and public involvement

There was no patient or public involvement.

RESULTS

A total of 2706 articles were identified from searching the databases of which 154 were duplicates. Following the screening process 19 articles were included. From these articles, forward and backward searching of the reference lists identified an additional 427 articles. Following the same screening process, 7 articles were included (figure 2) resulting in a total of 26 articles included for analysis.

Of the 26 included articles, the majority (n=15/26) used a cross-sectional design, 7 used a cohort design, 2 were case-control, 1 used a case report method and 1 was descriptive. Overall, 92% (n=24/26) of studies were conducted in the USA and Canada, 1 was conducted in Ireland and 1 conducted in Australia and New Zealand. Quantitative data was the predominant method of data collection (n=23/26).

Three articles²⁷⁻²⁹ report separate findings from one study evaluating the ‘Trauma Resilience and Recovery Program’ (TRRP) and similarly two articles^{30 31} reported separate findings from one study evaluating the ‘Trauma

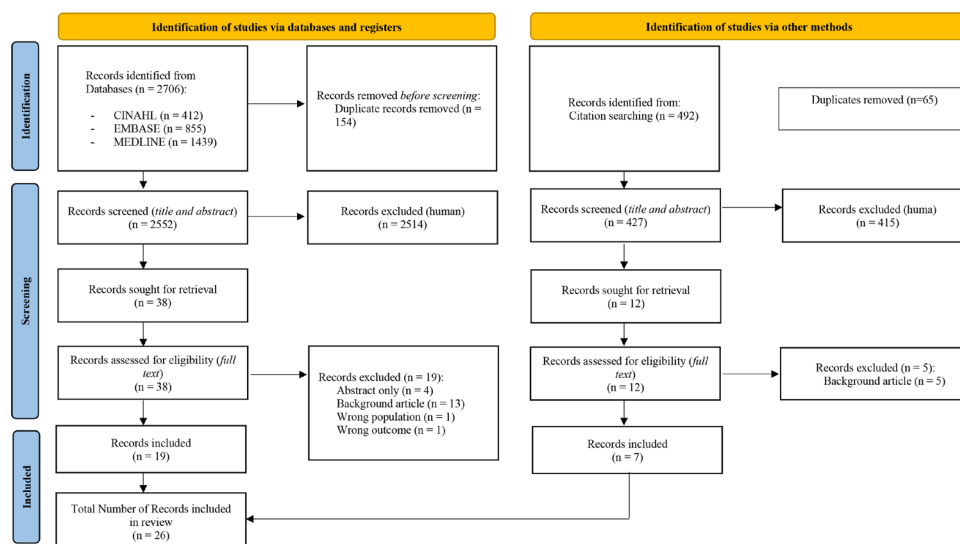


Figure 2 Preferred Reporting Items for Systematic Reviews and Meta-Analyses diagram.

Collaborative Care' (TCC) programme (see online supplemental file 5).

Structure

The domain of structure refers to the context in which care is delivered²⁰ including the physical facility, equipment and resources including staff and level of staff training (organisational). [Table 1](#) outlines the structure elements from the included articles. Further information on the trauma centre accreditation levels can be found in online supplemental file 6.

Physical facility

The follow-up services were provided at accredited trauma centres with the majority of the centres (n=22/23, 97%) described as level I.³²

Equipment and resources

The resources required to provide follow-up included physical clinic space, phone and text messaging capability and telehealth equipment; seven articles reported using a mixture of resources.^{27-31 33 34}

To deliver follow-up care, the resources reported included the use of a script to deliver a phone call³⁴⁻³⁶ or a scripted algorithm incorporating specific topic related questions pertaining to general well-being, pain control and complications.^{6 37} Protocols and guidelines were followed to deliver the care to patients^{38 39} although no description of the content of these were provided. In one study, a newsletter was sent to patients and families although the content and frequency of distribution was not made explicit. Seven articles report engagement with specific follow-up programmes.^{27-31 39 40}

Only one study reported the use of equipment which was specialised to assist with the delivery of telehealth.⁴¹ This included a close-up camera with zoom capabilities for skin examinations and a digital stethoscope, both of which were reported being used 14 (64%) and 20 (91%) times respectively from 22 appointments.

Staff

Across the included studies there was diversity in the number and type of health professionals involved in delivering follow-up service with just over half (n=14/22, 64%) describing a multidisciplinary team (MDT) approach comprised of nurses, physicians and allied health professionals. Follow-up by a single healthcare professional was described by eight studies (n=8/22, 36%) of which most were delivered by allied health professionals including physiotherapists, social workers, psychologists, occupational therapists, speech and language therapists or dietitians. One study described follow-up being delivered by the trauma team but did not specify the health professionals involved.⁴²

The experience and educational levels of staff involved in delivering follow-up was described in detail by two studies^{27 34} with staff described as having a 'Masters' level qualification³⁴ or a bachelor's or predoctoral.²⁷ In both studies the advanced qualifications were specific

to the psychologists involved in the team. In relation to the nursing roles, studies described educational levels in terms of the position title or experience: nurses were described as experienced³⁵ having additional qualifications such as a nurse practitioner^{38 43 44} or advanced practice nurse.³⁷

Process

The process domain relates to how the care is delivered within the context of the structure²⁰ and focused on care delivery and quality of the interaction.

Care delivery

All but three of the included articles⁴⁵⁻⁴⁷ outlined how the process of care was delivered in relation to the follow-up, the details of which are provided in [table 2](#). Ten studies outlined inclusion/exclusion criteria to determine their follow-up group^{6 29 33 37 39 40 43 48-50} this included age limitations, specific mechanisms of injury (ie, motorcycle accidents) and injury types (head, orthopaedic).

The timing of the follow-up varied widely in the studies which reported this information (n=19/23, 83%). In some studies, the follow-up occurred within the first 7 days following discharge^{33 34 36 37 39} while for others the follow-up was 4 weeks (n=5/23, 22%) or more following hospital discharge.^{27 28 30 31 43} In a survey of practicing trauma surgeons from the Eastern Association for the Surgery of Trauma, 61% reported that their follow-up was scheduled for 2 weeks following discharge; others reported that there was no set timeline for follow-up or that follow-up varied depending on the injuries sustained by the patients.⁴⁷

For patients who required multiple follow-up encounters, these were largely in relation to ongoing emotional or psychological support or therapy.^{27-31 40 43} Four studies reported multiple appointments to manage ongoing care in relation to injuries^{36 39 44 50} although from these, two reported that the majority of patients (between 65% and 84%) only required single visits.^{36 44}

The patient perspective on attendance to follow-up services was reported in two studies.^{34 38} Both studies reported that the ongoing health needs of patients was a motivating factor in reasons to attend follow-up, especially in relation to pain and emotional support. Reasons why patients did not attend follow-up included transportation issues (47%) or that they had recovered from their injuries (55%).³⁸

Quality of interaction

Patient assessment of the quality of the follow-up service was reported in five studies^{37-39 41 44}; however, it was unclear who was responsible for the collection of this survey data or if the surveys used a validated tool as no studies included a copy of the survey.

Outcomes

The outcomes domain relates to the results of the healthcare delivery.²⁰ The outcomes can be categorised into patient and family/caregiver, staff and organisational.

Table 1 Structure: context in which care is delivered

	Country	Trauma centre			Staff			Resources and equipment				Follow-up programme
		Level I	Level II	Level III	Single	MDT	Clinic space	Phone	Telehealth equipment	Mixture		
Aaland <i>et al</i> ⁵¹	USA		X			X	X					
Biffi and Biffi ³⁵	USA	X				X		X				
Boulanger <i>et al</i> ⁴¹	USA	X				X			X			
Bradford ⁴⁰	USA	X				X						Rebuild
Bradford <i>et al</i> ⁴⁵	USA	X				X						TSN
Bunnell <i>et al</i> ²⁷	USA	X			X						X	TRRP
Curtis <i>et al</i> ⁴⁶	ANZ					X						
Dalton <i>et al</i> ⁴²	USA	X						X				
DeMario <i>et al</i> ³³	USA	X			X						X	
Fletcher <i>et al</i> ³⁸	USA	X				X		X				
Gaines-Dillard ³⁷	USA	X			X				X			
Haider <i>et al</i> ⁴⁸	USA	X						X				
Hendrickson <i>et al</i> ³⁴	USA	X			X						X	
Malhotra <i>et al</i> ⁶	USA	X			X				X			
O'Reilly <i>et al</i> ³⁹	Ireland								X			
Ridings <i>et al</i> ²⁸	USA	X			X						X	TRRP
Ruggiero <i>et al</i> ²⁹	USA	X			X						X	TRRP
Simske <i>et al</i> ⁴⁹	USA	X										
Stone <i>et al</i> ¹⁵	USA	X				X		X				
Trevino <i>et al</i> ⁴³	USA	X				X		X				
Trevino <i>et al</i> ⁴⁷	USA											
Tuyp <i>et al</i> ⁴⁴	Canada	X				X		X				
Wegener <i>et al</i> ³⁰	USA	X				X					X	TCC (TSN)
Wegener <i>et al</i> ³¹	USA	X				X					X	TCC (TSN)
Whiting <i>et al</i> ⁶⁰	USA	X				X		X				
Wright <i>et al</i> ³⁶	USA	X			X				X			
Total number		22	1	1	8	14	8	5	1		7	

– indicates not reported.

MDT, Multidisciplinary team; TCC, Trauma Collaborative Care; TRRP, Trauma Resilience and Recovery Program; TSN, Trauma Survivors Network.

Table 2 Process: how the care is delivered

	Who		Why			Activities										Frequency		
	All	Inclusion/exclusion	Specific groups	Routine	Ongoing care	Assessment	Appointment	Referrals	Physical examination	Medication	Imaging	Education	Once	Multiple				
Aaland <i>et al</i> ⁵¹	X			X			X	X	X		X		X					
Biffi and Biffi ³⁵	X				X		X		X	X	X		X					
Boulianger <i>et al</i> ⁴¹		X		X			X	X	X	X			X					
Bradford ⁴⁰		X			X						X		X					
Bradford <i>et al</i> ⁴⁵	-	-	-	-	-	-							-	-				
Bunnell <i>et al</i> ²⁷	X			X	X		X	X			X		X					
Curtis <i>et al</i> ⁴⁶	-	-	-	-	-	-							-	-				
Dalton <i>et al</i> ⁴²		X		-	-	-	-	-	-	-	-	-	X					
DeMario <i>et al</i> ³³		X			X			X										
Fletcher <i>et al</i> ³⁸	X			X			X	X	X				X					
Gaines-Dillard <i>et al</i> ²⁷	X			X			X	X	X				X					
Haider <i>et al</i> ⁴⁸	X			-	-	-	-	-	-	-	-	-	X					
Hendrickson <i>et al</i> ⁶⁴	X			X			X						X					
Malhotra <i>et al</i> ⁶		X		X			X	X	X	X			X					
O'Reilly <i>et al</i> ³⁹	X				X		X	X		X			X					
Ridings <i>et al</i> ²⁸	X			X	X		X	X			X		X					
Ruggiero <i>et al</i> ²⁹	X			X	X		X	X			X		X					
Simske <i>et al</i> ⁴⁹	X			X							X		X					
Stone <i>et al</i> ¹⁵	X			X			-	-	-	-	-	-	X					
Trevino <i>et al</i> ⁴³	X			X			X						X					
Trevino <i>et al</i> ⁴⁷	-	-	-	-	-	-	-	-	-	-	-	-	-	-				
Tuyp <i>et al</i> ⁴⁴ 2018		X		X			X	X	X	X	X		X					
Wegener <i>et al</i> ³⁰	X			X			X	X	X	X	X		X					
Wegener <i>et al</i> ³¹	X			X			X	X	X	X	X		X					
Whiting <i>et al</i> ⁶⁰		X		X						X			X					
Wright <i>et al</i> ²⁶	X			X			X	X	X	X			X					
Total number	10	10	3	9	11	4	15	11	8	9	7	10	9	13				

- includes not reported.

Patient and family

Only one study reported on clinical outcomes of the patient and the relationship with the follow-up service.⁴⁹ Patients who engaged with the follow-up programme, 'Trauma Survivors Network' (TSN), reported a perceived increased chance of recovery and return to daily activities compared with patients who did not use the programme.

Several studies reported new, or ongoing physical or psychological health issues identified through the process of follow-up. The physical impact of trauma was identified during follow-up where the incidence of complications after discharge was reported to be up to 17%,⁶ mostly owing to pain^{6,30}; although other complications included missed injuries, infection and thrombotic events. New or unexpected symptoms were also found in a quarter of all patients attending follow-up.³⁶

Emotional recovery of patients and their family was also identified. Ridings²⁸ reported on the initial 2 years of their follow-up intervention, TRRP, and found just over a third (33.5%) exceeded the clinical threshold for depression and/or PTSD at 30 days following injury. In the subsequent study by Ruggiero *et al*²⁹ they reported a small increase on this finding to 35.9%. Similar results were reported by Hendrickson *et al*³⁴ who found 30% of trauma patients engaged in follow-up wanted ongoing emotional support.

Several studies reported on the complexity of the period of time following hospital discharge where adult patients and families required clarification around appointments, discharge and injury care plans and medication instructions.^{34,36,37} These challenges have also been observed in the paediatric context.³⁵ However, this finding was not consistent with up to 92% of adult patients with trauma reporting that they had booked additional appointments, obtained prescriptions and received equipment.³⁷ Almost half of paediatric trauma patients reported no difficulties in accessing ongoing services, but this was due to established structured follow-up support based on their injuries (ie, TBI).³⁵

The majority of patients were satisfied with the follow-up service provided with one study reporting 90% of patients surveyed found the follow-up appointment helpful.⁴⁴ For patients who used telehealth to access follow-up care, 100% stated they thought this delivery method made it easier to access care.⁴¹

Staff

Improved staff performance and confidence in making appropriate referrals for trauma patients was reported in three studies.^{30,40,45} This confidence was linked to the training provided to staff that accompanied the implementation of the follow-up programmes such as the TSN or TCC. One study reported results of a staff survey in highlighting the barriers of implementing the programme such as financial support and lack of engagement by hospital administrations.⁴⁵ In studies that did not use 'formal' follow-up programmes there was no provision of information relating to staff outcomes.

Organisational

Seven studies focused predominately on patient attendance rates to follow-up services^{15,34,38,43,48,50,51} with attendance rates ranging from 31% to 88% overall. When follow-up attendance was reviewed in terms of delivery method, face to face rated higher in compliance (31%–88%) compared with phone (33%–66.9%). Factors such as appointments not being booked, or inadequate documentation were reported to impact attendance.^{36,51}

Four studies reported on the characteristics of the patients who attended follow-up compared with those who did not,^{34,38,43,50} characteristics such as insurance status, smoking status and distance to the trauma centre from the patient's residential address were reported to be indicators of non-attendance.⁵⁰ However, these characteristics were not consistent findings across all studies.^{34,43} Two studies report a trend towards patients with moderate to severe injuries being more likely to comply with follow-up.^{33,38} DeMario *et al*³³ found that patients who attended follow-up engaged more consistently with other healthcare activities such as planned admissions or other outpatient encounters.

In terms of representations to the ED or readmissions to hospital, Dalton *et al*⁴² found that attending the follow-up clinic was not a significant predictor of ED use. One study who reported on two follow-up clinics as part of the same health organisation, found a reduction in both the presentations (from 6.4% to 5.1%) and readmission rates (from 7.1% to 6.5%).⁴⁴

The economic impact of follow-up following traumatic injury has not been well described; only two studies included economic evaluations. O'Reilly *et al*³⁹ provided a crude economic assessment of delivering follow-up where a comparison was made between the phone telehealth clinic to traditional face-to-face clinic. A reduction from €348 816 (face to face) to €75 175 (telehealth) was stated. DeMario *et al*³³ reviewed aggregated charges for patients who attended follow-up and reported that patient engagement in follow-up increased costs for the health organisation statistically significantly more than patients who did not engage, although ED representation costs were lower in this group.

DISCUSSION

In this scoping review, how follow-up services are delivered to patients with major trauma after hospital discharge were explored. A wide variety of follow-up services were identified, ranging from delivering 'routine' follow-up care (maintaining contact and/or re-examination of patients following hospital treatment)⁵² to purpose designed programmes, such as the TSN, to support patients and their families through the long-term recovery process. Many of the follow-up services were delivered by trauma specialists, with several incorporating an MDT approach. When sought, patients reported satisfaction with both the follow-up services provided and the delivery methods used.⁴⁹

The review highlights a gap within the literature on how and why follow-up services are established for patients who have experienced traumatic injury. Detail on the systematic approach of developing and establishing a follow-up service was lacking; the exception being the purpose designed programmes such as the TSN or TCC.^{30 49} Development of any service within healthcare should be patient centric, consider equity of access, support efficient use of resources, be based on the best available evidence and provide safe, quality care.⁵³ Several countries have published nationally accredited evidence-based trauma standards^{32 54–57} to provide guidance to institutions on the standard of care required to provide high quality care to trauma patients. Only the standards from Australia and Germany^{55 57} include recommendations on the provision of trauma follow-up service for patients. Despite this guidance, no literature published from these countries could be identified for this review.

From the review of this literature, it is unclear the extent to which trauma follow-up services are available worldwide. How these follow-up services are delivered is also highly variable and may focus on physical recovery, psychological recovery or both. The way in which follow-up services were delivered also varies in terms of how, when and to whom the services were delivered,⁴⁷ such that patients and families who are affected by trauma are not always guaranteed to be able to access follow-up by a trauma specialist after hospital discharge. The impact of this inconsistent service delivery approach on patient outcomes is currently unknown.

Evaluating trauma follow-up is essential to determine the efficacy, effectiveness and impact on both organisational and importantly patient/family outcomes.⁵³ The inconsistent approach to follow-up makes it difficult to compare the outcomes of the services. Some studies attempted summative evaluations to identify patients who were more likely to attend follow-up by reviewing variables such as discharge dispositions and hospital length of stay^{15 38 51}; however, the results were not consistent and focused on organisational rather than patient outcomes.

Despite the lack of a formal evaluation, the literature identified that patients who participated in follow-up, report satisfaction with the services provided and importantly, found that the act of participation positively influenced their own perception of their recovery.⁴⁹ Patient participation in a trauma follow-up service can facilitate understanding about individual injuries and recovery trajectories.⁵⁸ Using a collaborative approach between the healthcare providers and patient to promote patient participation, forms a central component in the purpose designed follow-up programmes (TSN, TRRP).³¹

The afore-mentioned programmes also included the trauma patient's family members as part of the trauma recovery journey. Engaging with families has been found to improve trauma patient outcomes.⁵⁸ Family members are frequently the informal caregiver to the patient and

report feeling overwhelmed and anxious during the recovery journey.³⁵ Targeted follow-up programmes which focus on improving engagement with trauma patients and their families may improve follow-up attendance and provide a platform to provide ongoing support and care that trauma patients require.

All trauma follow-up services described in the studies included in this scoping review were conducted pre COVID-19 and it is likely that the delivery methods have been modified as a result of public health regulations or local health service priorities. Since the start of pandemic many health systems have eliminated in person routine follow-up visits where possible with video-based telehealth or telephone-based delivery for routine follow-up where possible.⁵⁹ Before the COVID-19 pandemic, telehealth was established as a safe and effective method of providing follow-up following minor to moderate trauma; however, this approach may not be adequate for complex patients with major traumatic injury.⁵⁹ Furthermore, patients from low socioeconomic backgrounds and/or rural and remote areas may not have the technology required to access these services thus preventing them from engaging with this platform of care delivery.⁶⁰ It is currently unknown what effect, if any COVID-19 may have had on trauma follow-up services.

Although the search strategy was robustly developed it did not include grey literature. The inclusion of grey literature was initially considered but owing to limited description and outdated information we made the decision not to proceed with the inclusion of grey literature.

While the presence of trauma follow-up services is encouraging, the provision of principles to guide the delivery of follow-up services requires further work. While accreditation standards provided by professional organisations (RACS) in delivering trauma care contain reference to ongoing follow-up care, the principles in how to achieve this is lacking. Future work should focus on the development of trauma follow-up care guidance in partnership with trauma patients and their families; and incorporate frameworks to ensure follow-services can be robustly evaluated in terms of patient and organisational outcomes.

CONCLUSION

An examination of the literature in relation to the follow-up care provide to major trauma patients post discharge has highlighted a wide variation in relation to the services provided dependent on geographical location.

The current literature lacks robust evaluation in relation to follow-up care and trauma patient and family outcomes. While a more systematic and high-quality evaluation of trauma is required to determine the influence on outcomes, attention should also be directed at patient selection, the frequency and timing of follow-up care delivered, and the components of care provided. In addition, the paucity of economic analysis data adds to

the question of whether follow-up care is of value both patients and to healthcare organisations.

These elements require further examination to assist trauma patients and their families and health authorities to assess the need and benefits of follow-up.

Twitter Elizabeth Wake @lizrahilly1

Acknowledgements We express gratitude to Sarah Thorning (research and training librarian) for search strategy support and was responsible for the acquisition of data.

Contributors EW was responsible for the conception and design of the study. EW, APM and JR were responsible for the acquisition of data. EW, APM and JR were responsible for the interpretation of the data. EW (guarantor) was responsible for the drafting of the manuscript and all authors contributed to the revision of the manuscript and approval of the final version.

Funding The authors have not declared a specific grant for this research from any funding agency in the public, commercial or not-for-profit sectors.

Competing interests None declared.

Patient and public involvement Patients and/or the public were not involved in the design, or conduct, or reporting, or dissemination plans of this research.

Patient consent for publication Not applicable.

Ethics approval Not applicable.

Provenance and peer review Not commissioned; externally peer reviewed.

Data availability statement All data relevant to the study are included in the article or uploaded as online supplemental information.

Supplemental material This content has been supplied by the author(s). It has not been vetted by BMJ Publishing Group Limited (BMJ) and may not have been peer-reviewed. Any opinions or recommendations discussed are solely those of the author(s) and are not endorsed by BMJ. BMJ disclaims all liability and responsibility arising from any reliance placed on the content. Where the content includes any translated material, BMJ does not warrant the accuracy and reliability of the translations (including but not limited to local regulations, clinical guidelines, terminology, drug names and drug dosages), and is not responsible for any error and/or omissions arising from translation and adaptation or otherwise.

Open access This is an open access article distributed in accordance with the Creative Commons Attribution Non Commercial (CC BY-NC 4.0) license, which permits others to distribute, remix, adapt, build upon this work non-commercially, and license their derivative works on different terms, provided the original work is properly cited, appropriate credit is given, any changes made indicated, and the use is non-commercial. See: <http://creativecommons.org/licenses/by-nc/4.0/>.

ORCID iD

Elizabeth Wake <http://orcid.org/0000-0002-1690-3154>

REFERENCES

- World_Health_Organization. Injuries and violence; 2021. <https://www.who.int/news-room/fact-sheets/detail/injuries-and-violence> [Accessed 19 Mar 2021].
- Cameron PA, Gabbe BJ, McNeil JJ. The importance of quality of survival as an outcome measure for an integrated trauma system. *Injury* 2006;37:1178–84.
- MacKenzie EJ, Rivara FP, Jurkovich GJ, et al. A national evaluation of the effect of trauma-center care on mortality. *N Engl J Med* 2006;354:366–78.
- Herrera-Escobar JP, Castillo-Angeles MA, Osman SY, et al. Long-term patient-reported outcome measures after injury: National trauma research action plan (NTRAP) scoping review protocol. *Trauma Surg Acute Care Open* 2020;5:e000512.
- Kaske S, Lefering R, Trentzsch H, et al. Quality of life two years after severe trauma: a single-centre evaluation. *Injury* 2014;45 Suppl 3:S100–5.
- Malhotra AK, Martin N, Jacoby M, et al. What are we missing: results of a 13-month active follow-up program at a level I trauma center. *J Trauma* 2009;66:1696–703.
- Ahi R, Lindgren R, Cao Y, et al. Risk factors for depression following traumatic injury: an epidemiological study from a scandinavian trauma center. *Injury* 2017;48:1082–7.
- Baker SP, O'Neill B, Haddon W, et al. The injury severity score: a method for describing patients with multiple injuries and evaluating emergency care. *J Trauma* 1974;14:187–96.
- Australian_Trauma_Quality_Improvement_(AusTQIP)_Collaboration. Australian New Zealand trauma registry, management of the severely injured, 1 July 2017 to 30 June 2018. Melbourne, Victoria Alfred Health; 2019. https://static1.squarespace.com/static/5b761ed3f93fd491065f7839/t/5f5ede7f02b4ba0be6129464/1600052899945/ATR_Annual+Report_18-19_FINALAUGUST_web.pdf.
- American_College_of_Surgeons. National trauma data bank annual report 2016. Chicago; 2016.
- TARN. Trauma_Audit_&_Research_Network United Kingdom: TARN, 2021. Available: www.tarn.ac.uk
- Aitken LM, Chaboyer W, Kendall E, et al. Health status after traumatic injury. *J Trauma Acute Care Surg* 2012;72:1702–8.
- Beaton A, O'Leary K, Thorburn J, et al. Improving patient experience and outcomes following serious injury. *N Z Med J* 2019;132:15–25.
- Bench SD, Day T, Griffiths P. Involving users in the development of effective critical care discharge information: a focus group study. *Am J Crit Care* 2011;20:443–52.
- Stone ME, Marsh J, Cucuzzo J, et al. Factors associated with trauma clinic follow-up compliance after discharge: experience at an urban level I trauma center. *J Trauma Acute Care Surg* 2014;76:185–90.
- Warren K-RJ, Morrey C, Oppy A, et al. The overview of the Australian trauma system. *OTA Int* 2019;2:e018.
- Arksey H, O'Malley L. Scoping studies: towards a methodological framework. *Int J Soc Res Methodol* 2005;8:19–32.
- Tricco AC, Lillie E, Zarin W, et al. PRISMA extension for scoping reviews (PRISMA-ScR): checklist and explanation. *Ann Intern Med* 2018;169:467–73.
- Ouzzani M, Hammady H, Fedorowicz Z, et al. Rayyan—a web and mobile APP for systematic reviews. *Syst Rev* 2016;5:210.
- Donabedian A. Evaluating the quality of medical care. 1966. *Milbank Q* 2005;83:691–729.
- Binder C, Torres RE, Elwell D. Use of the donabedian model as a framework for COVID-19 response at a hospital in suburban Westchester County, New York: a facility-Level case report. *J Emerg Nurs* 2021;47:239–55.
- Worth M, Davis LL, Wallace DC, et al. Are emergency departments in the United States following recommendations by the emergency severity index to promote quality triage and reliability? *J Emerg Nurs* 2019;45:677–84.
- McGilton KS, Heath H, Chu CH, et al. Moving the agenda forward: a person-centred framework in long-term care. *Int J Older People Nurs* 2012;7:303–9.
- NHS_England. A model for measuring quality care: NHS
- Royal_College_of_Surgeons_of_England. *Using data to support change in clinical practice: a guide to good practice*. London, 2017.
- CASP. Casp checklists, 2021. Available: <https://casp-uk.net/casp-tools-checklists/>
- Bunnell BE, Davidson TM, Winkelmann JR, et al. Implementation and utility of an automated text messaging system to facilitate symptom self-monitoring and identify risk for post-traumatic stress disorder and depression in trauma center patients. *Telemed J E Health* 2019;25:1198–206.
- Ridings LE, Anton MT, Winkelmann J, et al. Trauma resilience and recovery program: addressing mental health in pediatric trauma centers. *J Pediatr Psychol* 2019;44:1046–56.
- Ruggiero KJ, Davidson TM, Anton MT, et al. Patient engagement in a technology-enhanced, stepped-care intervention to address the mental health needs of trauma center patients. *J Am Coll Surg* 2020;231:223–30.
- Wegener ST, Carroll EA, Gary JL, et al. Trauma collaborative care intervention: effect on surgeon confidence in managing psychosocial complications after orthopaedic trauma. *J Orthop Trauma* 2017;31:427–33.
- Wegener ST, Pollak AN, Frey KP, et al. The trauma collaborative care study (TCCS). *J Orthop Trauma* 2017;31 Suppl 1:s78–87.
- American_College_of_Surgeons. *Resources for optimal care of injured patient*. Sixth Edition, 2021. <https://www.facs.org/quality-programs/trauma/tqp/center-programs/vrc>
- DeMario B, Kalina MJ, Truong E, et al. Downstream hospital system effects of a comprehensive trauma recovery services program. *J Trauma Acute Care Surg* 2020;89:1177–82.
- Hendrickson SB, Simske NM, DaSilva KA, et al. Improvement in outpatient follow-up with a postdischarge phone call intervention. *J Am Acad Orthop Surg* 2020;28:e815–22.
- Biffi SE, Biffi WL. Improving transitions of care for complex pediatric trauma patients from inpatient rehabilitation to home: an observational pilot study. *Patient Saf Surg* 2015;9:1–5.



- 36 Wright A, Grady K, Galante J. Automated postdischarge trauma patient call program. *J Trauma Nurs* 2018;25:298–300.
- 37 Gaines-Dillard N. Nurse led telephone follow-up improves satisfaction in motorcycle trauma patients. *J Trauma Nurs* 2015;22:71–7.
- 38 Fletcher B, Meyers T, Williams M, *et al.* Analysis of patient follow-up at a level I trauma center in Ohio. *J Trauma Nurs* 2017;24:353–7.
- 39 O' Reilly M, Breathnach O, Conlon B, *et al.* Trauma assessment clinic: virtually a safe and smarter way of managing trauma care in Ireland. *Injury* 2019;50:898–902.
- 40 Bradford A. Life in recovery: rebuilding from trauma. *Int J Trauma Nurs* 2002;8:70–5.
- 41 Boulanger B, Kearney P, Ochoa J, *et al.* Telemedicine: a solution to the followup of rural trauma patients? *J Am Coll Surg* 2001;192:447–52.
- 42 Dalton MK, Fox NM, Porter JM, *et al.* Outpatient follow-up does not prevent emergency department utilization by trauma patients. *J Surg Res* 2017;218:92–8.
- 43 Trevino C, Geier T, Timmer-Murillo SC, *et al.* Feasibility of a trauma quality-of-life follow-up clinic. *J Trauma Acute Care Surg* 2020;89:226–9.
- 44 Tuyp B, Hassani K, Thurston C, *et al.* Continuing trauma care after discharge, the experience of outpatient trauma clinics in British Columbia. *J Trauma Nurs* 2018;25:121–5.
- 45 Bradford AN, Castillo RC, Carlini AR, *et al.* Barriers to implementation of a hospital-based program for survivors of traumatic injury. *J Trauma Nurs* 2013;20:89–99.
- 46 Curtis K, McCarthy A, Mitchell R, *et al.* Paediatric trauma systems and their impact on the health outcomes of severely injured children: protocol for a mixed methods cohort study. *Scand J Trauma Resusc Emerg Med* 2016;24:69.
- 47 Trevino CM, Cooros JC, Chesney SA, *et al.* A call to follow-up: results regarding trauma clinic follow-up patterns. *J Trauma Nurs* 2019;26:290–6.
- 48 Haider AH, Figura RH, Ladha K, *et al.* Can we decrease the number of trauma patients 'missing in action'? A prospective pilot intervention to improve trauma patient compliance with outpatient follow-up at an urban Level I trauma center. *Am Surg* 2014;80:96–8.
- 49 Simske NM, Rivera T, Breslin MA, *et al.* Implementing psychosocial programming at a level 1 trauma center: results from a 5-year period. *Trauma Surg Acute Care Open* 2020;5:e000363.
- 50 Whiting PS, Greenberg SE, Thakore RV, *et al.* What factors influence follow-up in orthopedic trauma surgery? *Arch Orthop Trauma Surg* 2015;135:321–7.
- 51 Aaland MO, Marose K, Zhu TH. The lost to trauma patient follow-up: a system or patient problem. *J Trauma Acute Care Surg* 2012;73:1507–11.
- 52 Merriam-Webster. "Follow-up", 2021. Available: <https://www.merriam-webster.com/dictionary/follow-up>
- 53 Agency_For_Clinical_Innovation. Understanding the process to develop a Model of Care. In: *Innovation ANAfC*. Chatswood: ACI, 2013.
- 54 Chesser TJS, Moran C, Willett K, *et al.* Development of trauma systems in Europe—reports from England, Germany, the Netherlands, and Spain. *OTA Int* 2019;2:e019.
- 55 German_Society_for_Trauma_Surgery. *Whitebook medical care of the severely injured*. Berlin, 2012.
- 56 NHS_England. NHS standard contract for major trauma service England: NHS, 2013. Available: <https://www.england.nhs.uk/wp-content/uploads/2014/04/d15-major-trauma-0414.pdf>
- 57 Royal_Australian_College_of_Surgeons. Model resource criteria for trauma services: Royal Australian College of surgeons, 2020. Available: <https://www.surgeons.org/-/media/Project/RACS/surgeons-org/files/trauma-verification/model-resource-criteria.pdf?rev=5ce435e72b9643d29c30d7504f054d02&hash=DE0A1E91450CF4DA087512BA9F690660>
- 58 Bradford AN, Castillo RC, Carlini AR, *et al.* The trauma survivors network: survive. connect. rebuild. *J Trauma* 2011;70:1557–60.
- 59 Haut ER, Leeds IL, Livingston DH. The effect on trauma care secondary to the COVID-19 pandemic. *Ann Surg* 2020;272:e204–7.
- 60 Kanzler KE, Ogbeide S. Addressing trauma and stress in the COVID-19 pandemic: challenges and the promise of integrated primary care. *Psychol Trauma* 2020;12:S177–9.