


RESEARCH

Open Access



# A novel protein fusion partner, carbohydrate-binding module family 66, to enhance heterologous protein expression in *Escherichia coli*

Hyunjun Ko<sup>1†</sup>, Minsik Kang<sup>1,2†</sup>, Mi-Jin Kim<sup>1</sup>, Jiyeon Yi<sup>1</sup>, Jin Kang<sup>1,2</sup>, Jung-Hoon Bae<sup>1</sup>, Jung-Hoon Sohn<sup>1,2\*</sup> and Bong Hyun Sung<sup>1,2\*</sup> 

## Abstract

**Background:** Proteins with novel functions or advanced activities developed by various protein engineering techniques must have sufficient solubility to retain their bioactivity. However, inactive protein aggregates are frequently produced during heterologous protein expression in *Escherichia coli*. To prevent the formation of inclusion bodies, fusion tag technology has been commonly employed, owing to its good performance in soluble expression of target proteins, ease of application, and purification feasibility. Thus, researchers have continuously developed novel fusion tags to expand the expression capacity of high-value proteins in *E. coli*.

**Results:** A novel fusion tag comprising carbohydrate-binding module 66 (CBM66) was developed for the soluble expression of heterologous proteins in *E. coli*. The target protein solubilization capacity of the CBM66 tag was verified using seven proteins that are poorly expressed or form inclusion bodies in *E. coli*: four human-derived signaling polypeptides and three microbial enzymes. Compared to native proteins, CBM66-fused proteins exhibited improved solubility and high production titer. The protein-solubilizing effect of the CBM66 tag was compared with that of two commercial tags, maltose-binding protein and glutathione-S-transferase, using poly(ethylene terephthalate) hydrolase (PETase) as a model protein; CBM66 fusion resulted in a 3.7-fold higher expression amount of soluble PETase (approximately 370 mg/L) compared to fusion with the other commercial tags. The intact PETase was purified from the fusion protein upon serial treatment with enterokinase and affinity chromatography using levan-agarose resin. The bioactivity of the three proteins assessed was maintained even when the CBM66 tag was fused.

**Conclusions:** The use of the CBM66 tag to improve soluble protein expression facilitates the easy and economic production of high-value proteins in *E. coli*.

**Keywords:** Fusion tag, Carbohydrate-binding module, Soluble expression, Levan-agarose, *Escherichia coli*

## Background

*Escherichia coli* is a predominant workhorse in a wide range of biotechnological applications. It has been particularly employed as an efficient cell factory for the production of biomolecules, including high-value recombinant proteins. However, several heterologous proteins have been frequently produced as inactive protein

\*Correspondence: sohn4090@kribb.re.kr; bhsung@kribb.re.kr

†Hyunjun Ko and Minsik Kang contributed equally to this work

<sup>1</sup> Synthetic Biology and Bioengineering Research Center, Korea Research Institute of Bioscience and Biotechnology (KRIBB), 125 Gwahak-ro, Yuseong-gu, Daejeon 34141, Republic of Korea

Full list of author information is available at the end of the article



aggregates called “inclusion bodies” during expression in *E. coli*. There are two approaches for dealing with inclusion bodies: counterpointing and avoiding. The former is the utilization of protein aggregates, with the advantage of yielding large amounts of protein. However, the inclusion body should be solubilized and refolded by the strong and large amount of detergents to recover the bioactivity of the target protein, which is a hurdle for scale-up production [1–3]. The latter comprises several strategies, including the optimization of culture conditions, host genome engineering, and the application of fusion tags to increase the solubility of target proteins [4].

Fusion tag technology is an attractive solution for inclusion body formation owing to its good performance in the soluble expression of target proteins, ease of application, and purification feasibility. To date, various peptides, proteins, and their derivatives have been developed and employed as fusion tags to enhance soluble protein expression and purification (Table 1). Maltose-binding protein (MBP) and glutathione-S-transferase (GST) tags are generally considered representative options for solubility enhancers, and hexa-histidine tag is the most widely used affinity tag [5]. Although various fusion tags have been developed and applied in recombinant protein production, it is impossible for a specific tag to carry an omnipotent solubilizing effect for various target proteins. Hence, researchers have developed novel fusion tags to expand the expression capacity of high-value proteins in *E. coli*.

Carbohydrate-binding modules (CBMs) are the components of carbohydrate-active enzymes with carbohydrate affinity [6]. Since the discovery of CBMs by Reese in 1950 [7], numerous CBMs have been identified and characterized [8]. In recombinant protein production, CBMs have been used as fusion partners for soluble expression and affinity purification with a combination of their carbohydrate ligands. The most studied system is the CBM3. Through the fusion of CBM3 from

*Clostridium* sp., various proteins, including human heat-shock protein, antimicrobial peptides, and protein A, have been expressed in *E. coli* and purified using a cellulose matrix [9–12]. Another well-studied system, CBM2, has been shown to express proteins in various hosts such as *E. coli*, yeast, and mammalian cell lines [13, 14]. Furthermore, different target enzymes have been fused with CBM1, 9, and 30 and purified using a cellulose matrix [15–17]. Cuskin et al. recently reported a novel CBM family 66 (CBM66) from the exo-levanase of *Bacillus subtilis* (BsSacC). Using isothermal titration calorimetry and affinity gel electrophoresis, high binding affinity of CBM66 to fructans, particularly levan ( $\beta$ -2,6 fructan) was identified [18]. In addition, BsSacC was expressed well as a soluble enzyme in *E. coli* [19]; therefore, as with other CBMs, we considered the possibility of a soluble expression tag using CBM66.

Herein, we suggest the possibility of CBM66 as a novel fusion tag for the soluble expression of heterologous proteins in *E. coli*. The soluble expression capability of the tag was confirmed using various passenger proteins that are difficult to express in *E. coli*. The soluble expression-enhancing effect of the CBM66 tag was compared with that of commercial tags (MBP and GST) using a model protein. The novel protein fusion tag CBM66 can be used for the production of high-value proteins in the active form in *E. coli*.

## Results and discussion

### Construction of a plasmid for the expression of CBM66-fused proteins

To express target proteins fused with the CBM66 tag, the plasmid pCBM66 was constructed using the pET21b vector backbone. The target protein was designed to be expressed with a CBM66 tag on the N-terminus under the T7 promoter. A hexa-histidine-tag (his-tag) was attached to the C-terminus to purify and identify the expressed target proteins. In addition, a flexible linker

**Table 1** General fusion tags used in recombinant protein production

Tag	Protein	Origin	Size (kDa)	Purpose	References
MBP	Maltose-binding protein	<i>Escherichia coli</i>	43	B	[48]
GST	Glutathione-S-transferase	<i>Schistosoma japonicum</i>	27	B	[49]
Trx	Thioredoxin	<i>E. coli</i>	12	S	[50]
NusA	N-utilization substance	<i>E. coli</i>	54	S	[51]
SUMO	Small ubiquitin-modified	<i>Homo sapiens</i>	11	S	[52]
6 × His	Hexa-histidine	n/a	< 1	A	[53]
FLAG	FLAG-octapeptide	n/a	< 1	A	[54]
STREP	Streptavidin binding peptide	n/a	< 1	A	[55]
CBM66	Carbohydrate-binding module 66	<i>Bacillus subtilis</i>	18	B	This study

n/a not applicable, B bifunctional, S soluble expression, A affinity purification

domain, double repeats of four glycine and one serine [(G<sub>4</sub>S)<sub>2</sub>], and an enterokinase recognition site (D<sub>4</sub>K) were inserted between the tag and passenger protein for optional purification. To facilitate easy target gene cloning, recognition sites for two restriction enzymes (BamHI and XhoI) were inserted (Fig. 1). Although CBM66 naturally occurs in the C-terminus part of the levanase from *Bacillus subtilis* (BsSacC), we fused the CBM66 at the N-terminus of target proteins to obtain intact target proteins after enterokinase treatment, which cleaves after recognition sequence (D<sub>4</sub>K↓).

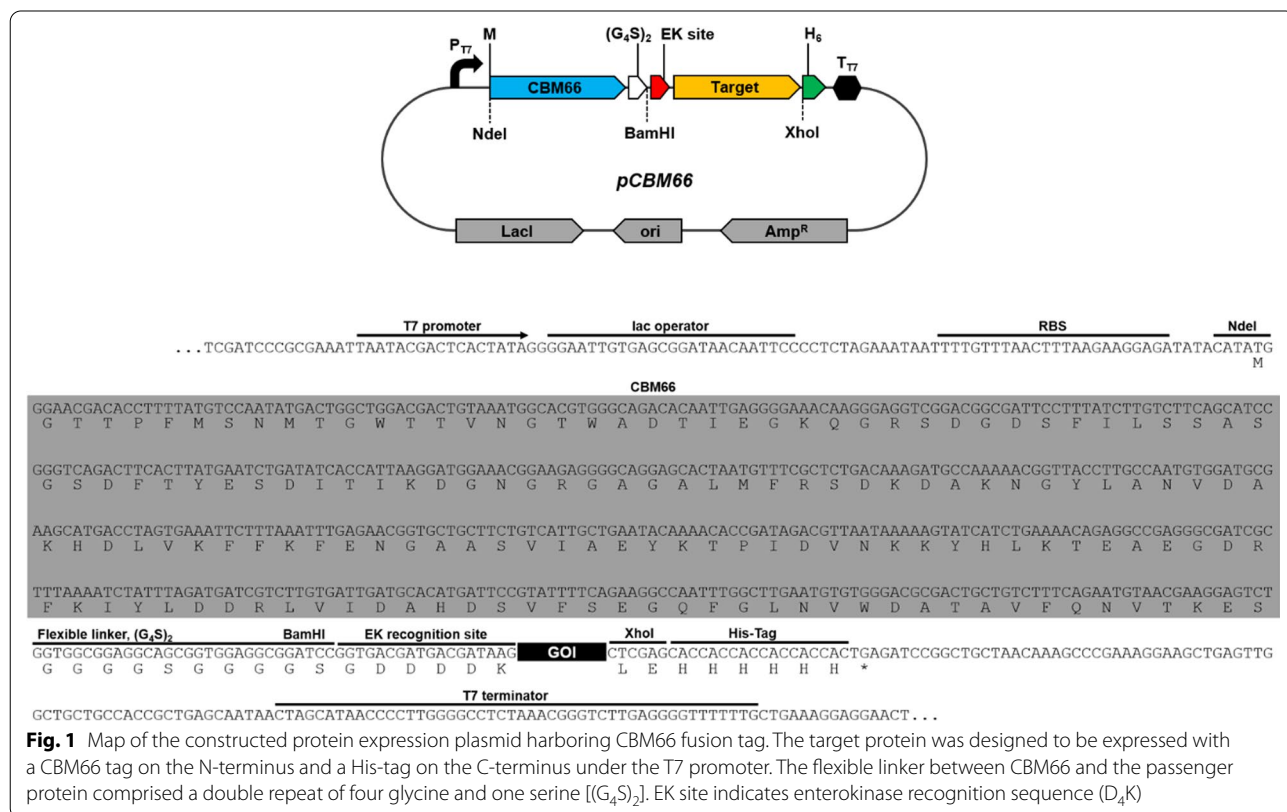
**Solubility enhancement of proteins by CBM66**

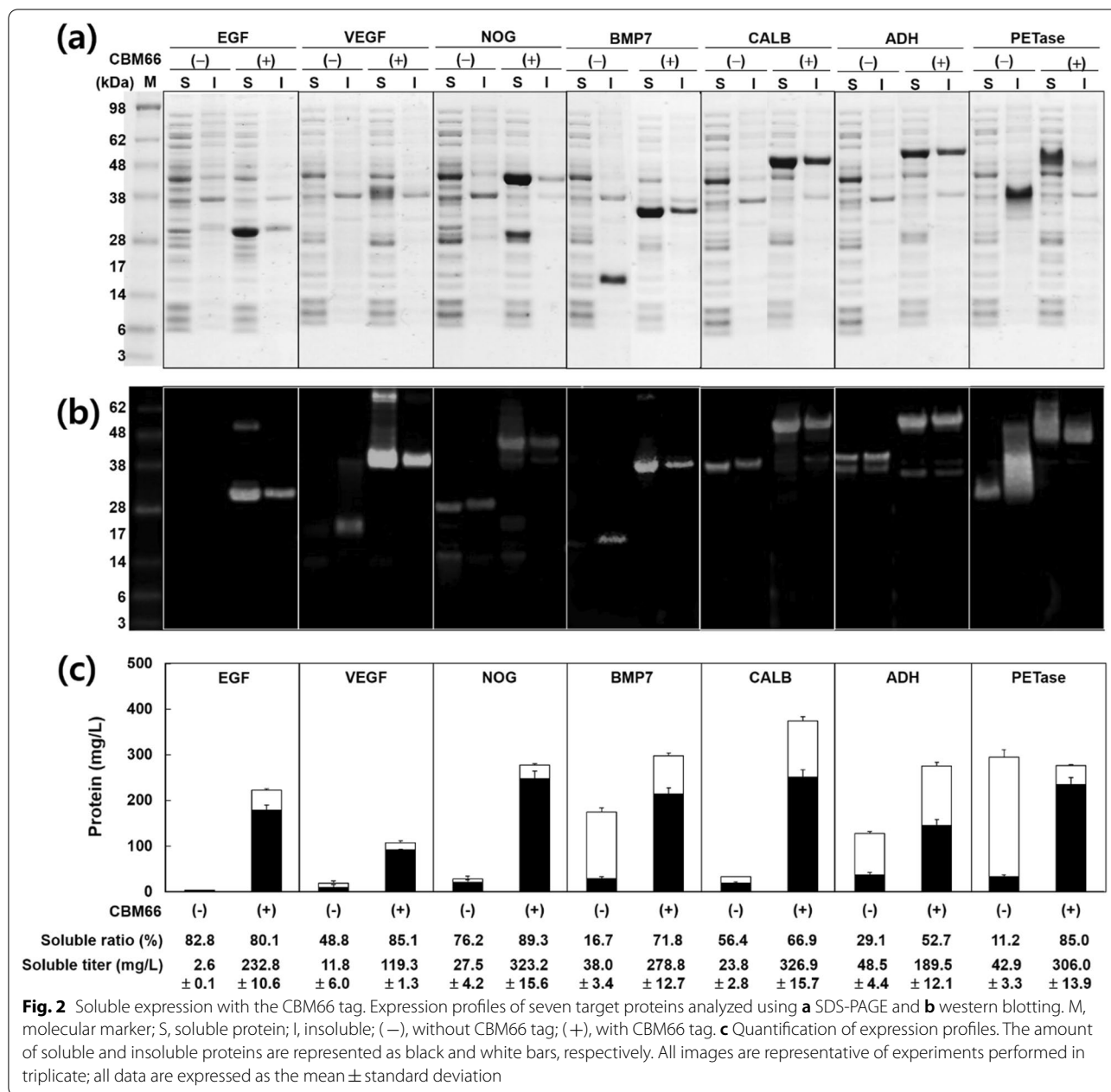
To verify the soluble expression-enhancing effect of the CBM66 tag, we tested seven target proteins: four human-derived signaling polypeptides (epidermal growth factor [EGF], vascular endothelial growth factor isoform 165 [VEGF], noggin [NOG], and bone morphogenetic protein 7 [BMP7]) and three microbial enzymes (lipase B from *Candida antarctica* [CALB], alcohol dehydrogenase 1 from *Saccharomyces cerevisiae* [ADH1], and polyethylene terephthalate (PET) hydrolase from *Ideonella sakaiensis* [PETase]), which are difficult to express in *E. coli*. *E. coli* containing expression vectors was grown at 18 °C for 18 h after isopropyl β-d-1-thiogalactopyranoside (IPTG) induction, and when optical density at 600 nm (OD<sub>600</sub>)

reached approximately 4.0 (Additional file 1: Fig. S1), the cells were harvested and protein expression was analyzed. As shown in Fig. 2, the solubility and productivity of the most proteins increased by the fusion of the CBM66 tag.

After fusion with CBM66, three human-derived signaling proteins, EGF, VEGF, and NOG, were detected in the soluble fraction, with titers of 233, 119, and 323 mg/L, respectively, whereas the recombinant proteins without the fusion tag were almost undetectable upon SDS-PAGE analysis after Coomassie blue staining. On SDS-PAGE, there were no proteins below 6 kDa. Therefore, we investigated whether EGF was not expressed or ran off the gel. When EGF purchased from Sigma-Aldrich (St. Louis, MO, USA) was loaded on the gel as a standard, it could be detected in SDS-PAGE (Additional file 1: Fig. S2). Based on this, it was confirmed that intact EGF was expressed to the extent that it could not be detected.

For the other human-derived protein, BMP7, protein solubility was inverted. A high amount of insoluble BMP7 (190 mg/L) was expressed without the CBM66 tag; however, CBM66-BMP7 was produced as a soluble protein (279 mg/L). For efficient expression of human signaling proteins, various fusion tags have been tested. As for EGF, thioredoxin (Trx) and GST tags have been employed; however, the tags were not effective in solubilizing EGF [20]. Viable soluble tags for EGF were developed based





on small ubiquitin-related modifier (SUMO) tags. Su et al. first reported the feasible expression of SUMO-fused EGF, with 54.3 mg/L titer and 38.9% soluble expression ratio per total protein [21]. Subsequently, Ma et al. demonstrated an improved EGF production titer and the soluble expression ratio of 281 mg/L and 59.5%, respectively, by the fusion of Mxe GyrA intein with SUMO (Mxe-GyrA-SUMO) [22]. The production amount of CBM66-EGF (233 mg/L) was lower than that of the intein-SUMO-fused EGF. However, the soluble EGF expression ratio with CBM66 was 80.1%, and therefore,

CBM66 is the most efficient fusion tag for soluble expression of EGF. For soluble expression of VEGF, various fusion tags, including MBP, GST, Trx, NusA, 6 × His, and two domains of human protein disulfide isomerase (PDI), were tested. From the tested tags, MBP, GST, NusA, and the two PDIs exhibited over 92% solubility of VEGF at 18 °C. For ease of purification, they selected MBP as the best option for VEGF production, and the production titer of MBP-VEGF was 64.4 mg/L [23]. In this study, the solubilizing effect of CBM66 for VEGF was determined to be 85.1%; however, the CBM66-VEGF production titer

was 119 mg/L. NOG and BMP7 have been considered as proteins that are difficult to express in *E. coli*. Therefore, these proteins are expressed in mammalian cell lines [24, 25]. However, as mammalian cell culture requires elaborate culture conditions using expensive media, economic production techniques using microbial systems, must be established [26]. To the best of our knowledge, the CBM66 tag system was the first successful method for soluble expression of NOG and BMP7 in *E. coli*. In this study, although the CBM66 tag did not consistently exhibit the high titer or solubility of the tested human-derived proteins, the four human-derived target proteins were expressed with an average soluble ratio of over 81%, and the titer reached several hundreds of milligrams per liter, which is viable for high-yield production.

We also tested three microbial industrial enzymes (CALB, ADH1, and PETase) as passenger proteins to demonstrate the soluble expression capability of the CBM66 tag. CALB is the most extensively applied biocatalyst for the production of various oleochemicals [27]. However, *E. coli* has not been considered as an expression host for recombinant CALB because the protein is produced in negligible quantities or expressed as an inclusion body. To solubilize CALB, various biotechnological techniques such as codon optimization, mutagenesis, and co-expression with chaperones have been applied; however, the amount of soluble CALB produced was only several milligrams per liter [28–31]. Polycationic amino acid tags have recently been suggested for the soluble expression of CALB. Jung et al. constructed various polyamine tags comprising 10 consecutive homo basic amino acids (lysine, arginine, and histidine), and they selected the tag composed of 10 arginine residues as an optimal soluble tag for CALB by fusion at the carboxy terminus of the enzyme (CALB-10Arg) [32]. Similarly, Zhou et al. developed a more efficient soluble expression tag for CALB by the fusion of six histidine residues at the amino terminus and ten lysine residues at the carboxy terminus of CALB (6His-CALB-10Lys), and the production titer reached 100 mg/L [33]. In this study, by fusion with the CBM66 tag, the soluble CBM66-CALB exhibited 327 mg/L (Additional file 1: Fig. S3). ADH1 is a key enzyme involved in the metabolism of primary alcohols. Owing to its high stereoselectivity, it has been traditionally used in the production of drugs and chemicals [34]. ADH1 is a protein that is considered difficult to express in *E. coli*, and this was confirmed by the expression of insoluble ADH1 (71%) using the pET21b vector system; however, when ADH1 was fused to the CBM66 tag, the soluble ADH1 expression ratio increased to 53%, with 189 mg/L titer. PETase is a recently identified esterase from *I. sakaiensis* that

hydrolyzes PET [35]. With increasing environmental issues due to the enormous usage and subsequent accumulation of petroleum-based plastics such as PET, biological degradation of the plastic by the enzyme has been suggested. Since its discovery, studies on enzymes have primarily focused on basic understanding, such as structural analysis of the mode of action, mutagenesis for the identification of crucial residues, and functional characterizations [36–40]. To utilize PETase in biological degradation of PET waste, a production system yielding sufficient amount of the enzyme has to be established. In this study, the level of CBM66-PETase was 360 mg/L, of which 306 mg/L (85%) was produced in the soluble form. However, 383 mg/L of intact PETase was produced, of which 11% (43 mg/L) was produced in the soluble form. Even in Rosetta-gami (DE3) strain, only about 50 mg/L of protein was produced in the soluble form (Additional file 1: Fig. S4).

Codon optimization is a predominant method for heterologous expression of recombinant proteins. However, in this study, we tested the soluble expression level of target proteins without codon optimization to avoid the misjudgment of solubilizing effect by CBM66 tag. For the seven proteins we tested, target proteins exhibited good expression levels in soluble form when fused with CBM66. However, it is difficult to predict whether CBM66 will function well for all proteins. In this case, better protein expression results can be obtained through codon optimization and the selection of various *E. coli* strains.

In this study, CBM66 tag was comprised the CBM66 domain following a repeat of four glycine and one serine ( $G_4S$ )<sub>2</sub>, and a specific protease recognition sequence (EK site, DDDDK). To verify whether the solubilizing effect of the CBM66 tag was derived from CBM66 not the linker and EK site, we constructed a pLE vector (Additional file 1: Fig. S5a), and tested expression titer using three target proteins (EGF, ADH, and PETase). ADH and PETase exhibited higher soluble expression with the LE tag than with canonical pET21b. However, the amount of obtained protein were < 50 mg/L (Additional file 1: Fig. S5b and c). Therefore, we concluded that the CMB66 tag was primarily responsible for the solubilizing effect.

The mechanism underlying solubility enhancement of fusion tags like CBMs has been investigated for decades; however, the correlation between tags and passenger proteins has not been elucidated. One dominant model for increased solubility of passenger proteins by CBMs is “chaperone-like quality.” Similar to MBP, various CBMs act as molecular chaperones that assist proper folding of attached proteins [16, 41, 42]. Despite the lack of understanding of CBMs, various CBMs have been utilized, and their applicability as fusion tags for heterologous

expression and purification of various proteins has been proven [43, 44].

### Comparison of CBM66 with commercial tags

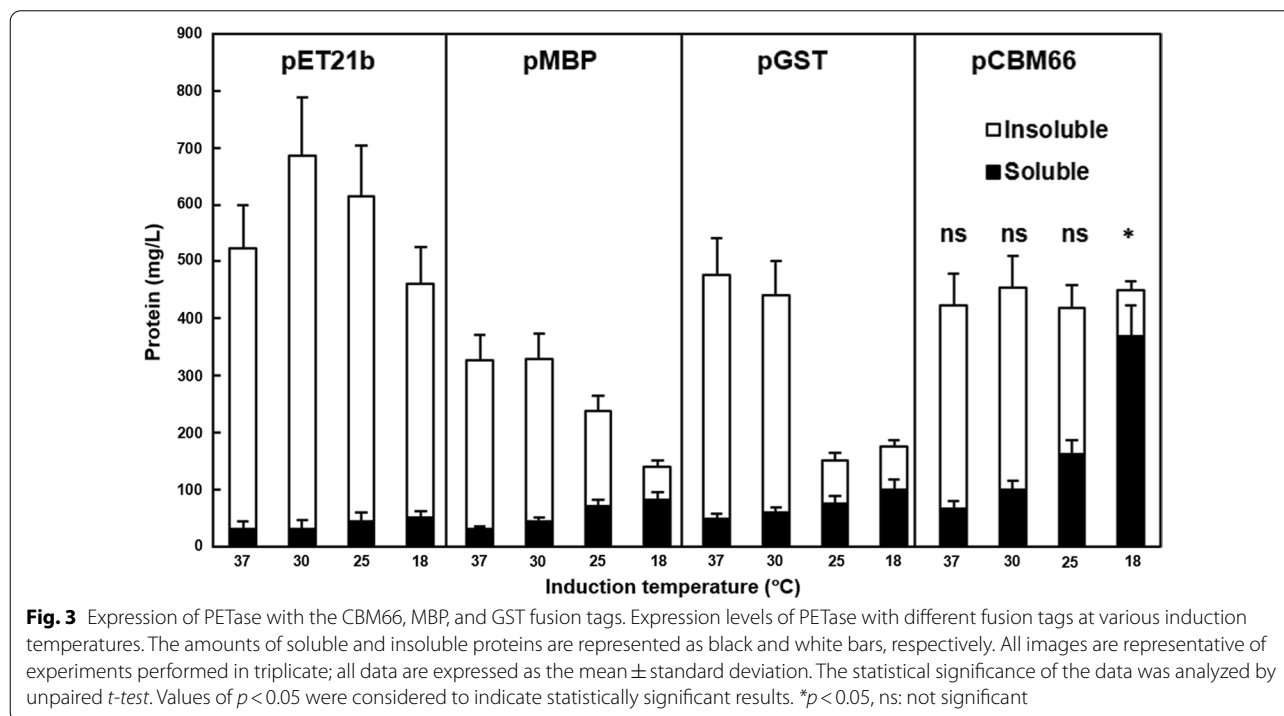
The solubilizing efficacy of the CBM66 tag was compared with that of two commercial tags, MBP and GST. We selected PETase as a model protein because it has emerged as a countermeasure for the environmental issues of petro-derived plastics. As shown in Fig. 3, under induction temperatures of 37, 30, 25, and 18 °C, a high proportion of insoluble PETase was expressed in the absence of fusion tags. However, when a fusion tag (MBP, GST, or CBM66) was attached to the N-terminus of the passenger, the soluble expression level was increased at lower temperatures. Among them, the CBM66 tag exhibited the highest titer of soluble PETase (369 mg/L), and the soluble expression ratio was increased by over 82% at 18 °C. MBP and GST also exhibited increased soluble expression levels at 18 °C; however, the maximal concentration obtained by fusion with GST was approximately 100 mg/L. In addition, the total expression level with MBP and GST was decreased at lower temperatures; however, CBM66 maintained total protein production titer regardless of the induction temperature. Another advantage of the CBM66 tag is its smaller size (18 kDa) compared to the two commercial solubilizing tags (MBP, 43 kDa; GST, 26 kDa). Even if the soluble mass of the CBM66-tagged and MBP-tagged proteins were equivalent, the smaller

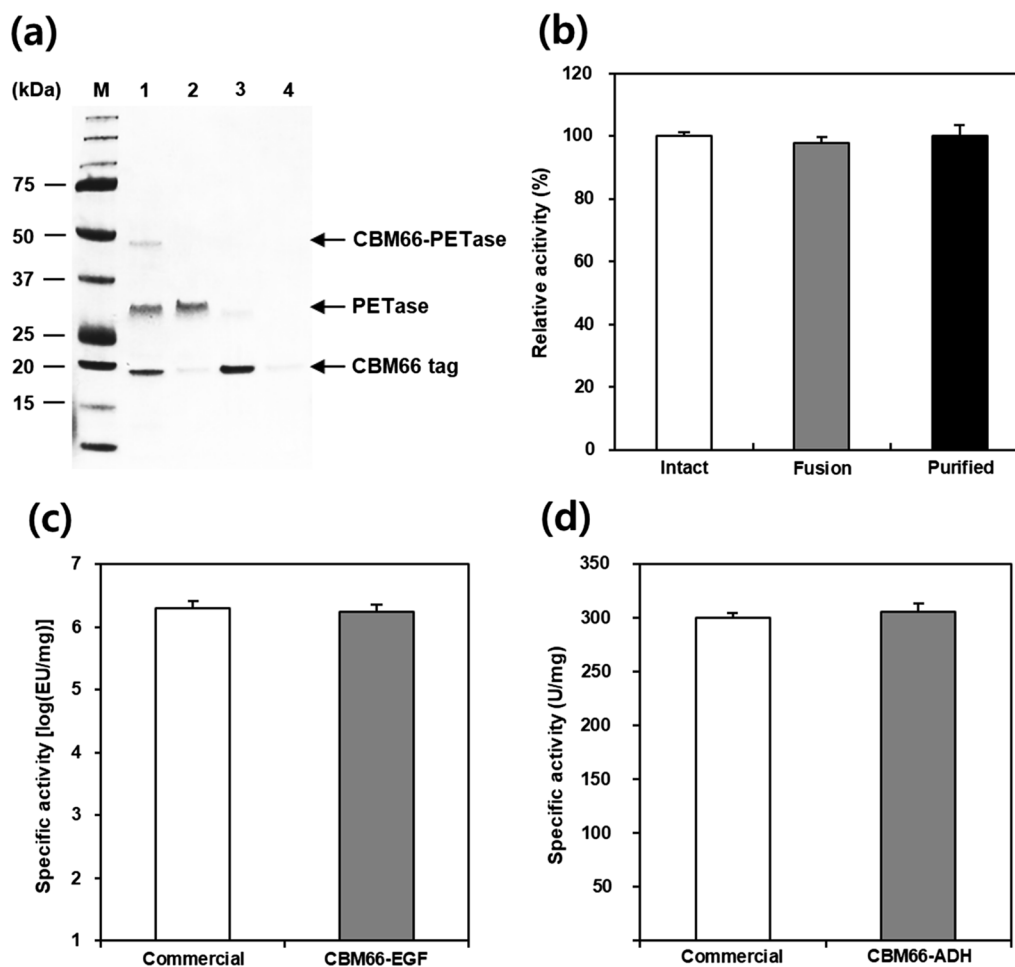
CBM66 tag guarantees higher recovery yield of target proteins after tag removal procedure.

### Purification of intact protein from fusion protein using levan-agarose resin (LAR)

To check whether CBM66-fused proteins could be purified using levan, a CBM66-binding carbohydrate, intact PETase cleaved from CBM66-PETase was purified using LAR. In detail, CBM66-PETase was purified by immobilized metal ion affinity chromatography (IMAC) using a His-tag on the C-terminus of the protein. Thereafter, the PETase and fusion tag were separated by enterokinase treatment. After cleavage, the reactant with 90.1% cleavage efficiency was directly loaded onto the prepared LAR. As shown in Fig. 4a, SDS-PAGE analysis revealed that the intact PETase did not interact with LAR and ran out as flow through. In contrast, the CBM66 tag was bound to LAR and was fully eluted using 100 mM NaCl. From the quantitative analysis of each fraction, the recovery yield of cleaved intact PETase was 88.6%.

Most CBMs identified thus far are cellulose-binding modules. Cellulose is a good purification matrix owing to its stability, safety, and cost-effectiveness. However, the binding affinity between CBMs and cellulose is extremely high, and thus, strong protein denaturation reagents such as urea and guanidine hydrochloride are required for the detachment of CBMs from cellulose followed by dialysis [43]. Based on the binding nature of CBM66, we prepared LAR as the purification matrix, and the target protein





**Fig. 4** Purification of intact protein from the fusion product. **a** SDS-PAGE analysis of purification steps. The CBM66 tag and PETase cleaved by enterokinase (lane 1); PETase collected from flow through (lane 2). The CBM66 tag eluted with 50 mM and 100 mM sodium chloride solutions (lanes 3 and 4, respectively). **b** Bioactivity of PETase samples during the purification steps (intact, CBM66-fused, and purified PETase). Bioactivity of two CBM66-fused model proteins (EGF and ADH1) were compared with commercial enzymes on **c** and **d**, respectively. All images are representative of experiments performed in triplicate; all data are expressed as the mean  $\pm$  standard deviation

was easily eluted from the matrix using sodium chloride, which is a favorable reagent for protein studies. The purification system used in this study has not yet been fully established, which limits the precise specification of the levan matrix. Therefore, to improve CBM66-based soluble expression and levan-based purification systems, it is necessary to determine the precise binding capability, physical and chemical stability, and other characteristics of the levan matrix.

#### Bioactivity of CBM66-fused proteins

To analyze the effect of CBM66 tag on the bioactivity of the CBM66-fused protein, the relative activities of CBM66-PETase, -EGF, and -ADH1 were compared

with those of the corresponding intact proteins. The intact PETase was obtained from a large volume culture of *E. coli* BL21 (DE3)/pET21b vector system, followed by IMAC purification. PETase activity was calculated as the hydrolysis activity of bis(2-hydroxyethyl) terephthalate (BHET). The biological activities of CBM66-PETase and detached PETase were  $97.9 \pm 1.3\%$  and  $100.1 \pm 1.4\%$  of the biological activity of the commercial PETase, respectively (Fig. 4b). Specific activity of CBM66-EGF was  $1.8 \times 10^6$  EU/mg, which corresponded to  $97.6 \pm 2.5\%$  of that of commercial EGF (Fig. 4c). For ADH, both commercial and CBM66-fused ADH exhibited similar specific activity ( $300.1 \pm 4.9$  and  $305.4 \pm 8.2$  U/mg, respectively) within the margin of error (Fig. 4d). Overall, all tested fusion proteins were found to exhibit

biological activities similar to those of the corresponding intact proteins.

## Conclusions

In this study, we developed a novel protein fusion tag using CBM66. The capacity of CBM66 to solubilize target proteins was investigated using seven target proteins, and the CBM66 tag exhibited increased soluble protein expression and total expression levels. The solubilizing effect of CBM66 was compared with that of MBP and GST using PETase as a model protein. CBM66 exhibited the highest soluble protein expression compared to other commercial tags. Furthermore, the possibility of using CBM66 as a protein purification tag was applied to intact PETase purification through serial treatment with a specific protease (enterokinase) and affinity chromatography via LAR. To date, there have been numerous studies aiming to overcome inclusion body formation during recombinant protein production in *E. coli*; however, there is no universal solution in biological systems. Thus, we expect that the CBM66 tag can be an alternative protein fusion tag for efficient production of high-value proteins in *E. coli*.

## Methods

### Strains, chemicals, and media

*Escherichia coli* DH5 $\alpha$  [ $F^-$  *lacZ* $\Delta$ M15 *hsdR*17(r- m-) *gyrA*36] and BL21(DE3) [ $F^-$  *ampT* *dcm* *hsdS* $\beta$  ( $r\beta^-$   $m\beta^-$ ) *gal* $\lambda$  (DE3)] were employed for genetic manipulation and expression of the target proteins, respectively. Q5 DNA polymerase, enterokinase, and restriction endonucleases were purchased from New England Biolabs (Ipswich, MA, USA). The In-Fusion HD cloning kit was purchased from Clontech Laboratories (Mountain View, CA, USA). The prepared DNA was purified using Wizard SV Gel and the PCR Clean-Up system (Promega, Madison, WI, USA). The Quick-DNA Miniprep Kit was purchased from Zymo Research (Irvine, CA, USA). Levan was purchased from Real Biotech (Gongju, Korea). All other chemicals were purchased from Sigma-Aldrich. The *E. coli* transformants were cultured in lysogeny broth (LB) containing 100  $\mu$ g/mL ampicillin.

### Construction of recombinant vector harboring the CBM66 tag

The protein expression vector pCBM66 was designed by the insertion of a flexible linker domain,  $(G_4S)_2$ , and enterokinase cleavage site between the tag and passenger protein for optional purification. The recombinant vector was constructed on the pET21b vector backbone. The CBM66 fragment (residues 514–677 of BsSacC) was prepared from the genomic DNA of *B. subtilis* [18].

The strain was obtained from the Korean Collection for Type Cultures (KCTC#2217, ATCC33234). To amplify the fragment, primers (F1 and R1) were designed based on the NCBI database (NP\_390581.1), including NdeI and XhoI recognition sites, and synthesized by Genotech (Daejeon, Korea). The linker was added to the carboxyl terminus of CBM66 by PCR using primers F2 and R2, and the enterokinase recognition sequence was added to the amino terminus of the target protein using specific primers F3 and R3. The fragments were cloned into the NdeI/XhoI double-digested pET21b vector using the In-Fusion HD cloning kit, and the recombinant vector was introduced into BL21(DE3). To compare the soluble expression efficacy of CBM66 with commercial tags, the CBM66 region of the vector was replaced by MBP and GST. Each gene was prepared from pMAL-p5X (NEB) and pGEX-4T1 (GE Healthcare, Little Chalfont, UK) vectors, respectively, using PCR with the F4/R4 and F5/R5 primer sets, respectively. To construct a vector, pLE containing only a linker  $[(G_4S)_2]$  and an enterokinase recognition site (DDDDK) was used. Each gene was amplified using F6 and R3 primers. The amplicon was ligated with the linearized pET21b vector by NdeI/XhoI (Additional file 1: Fig. S5). Cloning was performed as described previously. The genes of seven passenger proteins from the NCBI database [EGF (GenBank: AAS83395.1), VEGF (GenBank: AAL27630.1), NOG (PDB: 1M4U\_A), BMP7 (GenBank: AIL24690.1), CALB (PDB: 1LBT\_B), ADH1 (PDB: 4W6Z\_A), and PETase (PDB: 6EQD\_A)] were synthesized by Bioneer Corp. (Daejeon, Korea). Nucleotide sequences of the primers are listed in Table 2.

### Protein expression analysis

*E. coli* BL21(DE3) was transformed with the plasmids constructed for the expression of the passenger proteins, and each transformant was cultured in a 250 mL Erlenmeyer flask containing 50 mL LB at 37 °C and 180 rpm until the OD<sub>600</sub> was 0.4–0.6. To induce protein expression, 0.1 mM IPTG was added to the culture medium and incubated at 18 °C for 18 h. After cultivation, the cells were harvested by centrifugation at 8000  $\times$  g for 5 min and reconstituted in 10 mL of 25 mM Tris-HCl buffer (pH 7.5). The cells were disrupted by ultrasonication for 5 min with a 3 s pulse interval on ice. The cell lysate was centrifuged at 15,000  $\times$  g for 15 min, and the supernatant and pellet were collected. The supernatant was used as a soluble protein sample, and insoluble protein was obtained from the pellet using an equal volume of xTractor buffer following the manufacturer's instructions (Takara Bio, Shiga, Japan). To compare the expression ratio of soluble and insoluble portions, 10  $\mu$ L of prepared samples were analyzed by SDS-PAGE. Proteins expressed with His-tag were purified and desalted using a





EGF activity was verified by cell proliferation analysis. Human keratinocyte HaCaT cells were cultured in Dulbecco's modified Eagle's medium (DMEM) supplemented with 10 U/mL of penicillin–streptomycin and 10% fetal bovine serum (FBS) (DMEM + / +) at 37 °C with 5% carbon dioxide in a 96-well microplate. The initial inoculum was adjusted to  $2 \times 10^4$  cells/mL in the prepared media and incubated for 48 h. After 48 h, the medium was replaced with fresh DMEM + / – (without FBS) containing intact and CBM66-fused EGF at a final concentration of 1 nM and incubated for 48 h. The colorimetric assay of cell proliferation was performed using a water-soluble tetrazolium salt (EZ-Cytox, Daeilab Service, Seoul, Korea). One-tenth volume of EZ-Cytox was added to each culture and incubated for 5 h. Cell viability was analyzed by measuring the OD<sub>540</sub>.

The bioactivity of ADH1 was confirmed by the formation of acetaldehyde from ethanol. An aliquot of 5 nM of each protein sample was added to 1 mL of reaction mixture containing 50 mM ethanol and 25 mM NAD<sup>+</sup>. The mixture was incubated at 30 °C for 2 h. After incubation, 50 µL of 3 M HCl was added to the mixture to halt the reaction. The amount of acetaldehyde produced was quantified using HPLC analysis. The Animex HPX-87H column (Bio-Rad) was equipped with 1100 series HPLC (Agilent), and HPLC grade water containing 5 mM sulfuric acid was used as the mobile phase at a flow rate of 0.6.

One unit of EGF (EU) was defined as the amount peptide that generates 50% cell proliferation effect via MTT assay described above. One unit of ADH was defined as the amount of enzyme produced by 1 µM acetaldehyde from ethanol per minute. Standard EGF and ADH1 were purchased from Sigma–Aldrich.

#### Abbreviations

CBM66: Carbohydrate-binding module family 66; LAR: Levan-agarose resin; MBP: Maltose-binding protein; GST: Glutathione S-transferase; HPLC: High performance liquid chromatography; BHET: Bis (2-Hydroxyethyl terephthalate); EGF: Epidermal growth factor; DMEM: Dulbecco's modified Eagle's media; FBS: Fetal bovine serum; ADH1: Alcohol dehydrogenase 1; PETase: Poly(ethylene terephthalate) hydrolase; IMAC: Immobilized metal ion affinity chromatography.

#### Supplementary Information

The online version contains supplementary material available at <https://doi.org/10.1186/s12934-021-01725-w>.

**Additional file 1: Figure S1.** Cell growth curve of *E. coli* BL21(DE3) containing PETase expression vectors. **Figure S2.** SDS-PAGE analysis of commercial EGF. **Figure S3.** Quantification of CBM-fused CalB lipase. **Figure S4.** Expression analysis of PETase in *E. coli* Rosetta-gami (DE3). **Figure S5.** Soluble expression effect of a linker and a peptidase domain in pCBM66.

#### Acknowledgements

Not applicable

#### Authors' contributions

J-HS and BHS. designed this project. HK, MK, and J-HB constructed plasmids and expressed proteins in *Escherichia coli*. HK, MK, JY, JK, and M-JK performed the enzyme purification and activity assays. HK and BHS drafted the manuscript, which was edited by all authors.

#### Funding

This work was supported by the Basic Science Research Program (2019R1A2C1090726) and the Bio & Medical Technology Development Program (2021M3A9I5023254, 2018M3A9H3024746) through the National Research Foundation, the National Research Council of Science & Technology grant (CAP-20-02-KITOX) by the Korean government (MSIT), and the Research Initiative Program of the Korea Research Institute of Bioscience and Biotechnology (KGM5402113).

#### Availability of data and materials

All data generated or analyzed during this study are included in this published article.

#### Declarations

#### Ethics approval and consent to participate

Not applicable.

#### Consent for publication

Not applicable.

#### Competing interests

The authors declare that they have no competing interests.

#### Author details

<sup>1</sup>Synthetic Biology and Bioengineering Research Center, Korea Research Institute of Bioscience and Biotechnology (KRIBB), 125 Gwahak-ro, Yuseong-gu, Daejeon 34141, Republic of Korea. <sup>2</sup>Department of Biosystems and Bioengineering, KRIBB School of Biotechnology, Korea University of Science and Technology (UST), 217 Gajeong-ro, Yuseong-gu, Daejeon 34113, Republic of Korea.

Received: 20 April 2021 Accepted: 16 December 2021

Published online: 28 December 2021

#### References

1. Singh A, Upadhyay V, Upadhyay AK, Singh SM, Panda AK. Protein recovery from inclusion bodies of *Escherichia coli* using mild solubilization process. *Microb Cell Fact*. 2015;14:41.
2. Jong WS, Vikström D, Houben D, de Gier J-W, Luijckx J. Application of an *E. coli* signal sequence as a versatile inclusion body tag. *Microb Cell Fact*. 2017;16:50.
3. Singhvi P, Saneja A, Srichandan S, Panda AK. Bacterial inclusion bodies: a treasure trove of bioactive proteins. *Trends Biotechnol*. 2020;38:474–86.
4. Martínez-Alonso M, González-Montalbán N, García-Fruitós E, Villaverde A. Learning about protein solubility from bacterial inclusion bodies. *Microb Cell Fact*. 2009;8:4.
5. Correa A, Oppezzo P. Overcoming the solubility problem in *E. coli*: available approaches for recombinant protein production. In: *Insoluble proteins*. Springer; 2015. p. 27–44.
6. Taylor ME, Drickamer K. Convergent and divergent mechanisms of sugar recognition across kingdoms. *Curr Opin Struc Biol*. 2014;28:14–22.
7. Reese ET, Siu RG, Levinson HS. The biological degradation of soluble cellulose derivatives and its relationship to the mechanism of cellulose hydrolysis. *J Bacteriol*. 1950;59:485.
8. Terrapon N, Lombard V, Drula E, Coutinho PM, Henrissat B. The CAZy database/the carbohydrate-active enzyme (CAZy) database: principles and usage guidelines. In: *A practical guide to using glycomics databases*. Springer; 2017. p. 117–131.
9. Shpigel E, Elias D, Cohen IR, Shoseyov O. Production and purification of a recombinant human hsp60 epitope using the cellulose-binding domain in *Escherichia coli*. *Protein Expres Purif*. 1998;14:185–91.

10. Ramos R, Domingues L, Gama M. *Escherichia coli* expression and purification of LL37 fused to a family III carbohydrate-binding module from *Clostridium thermocellum*. *Protein Express Purif*. 2010;71:1–7.
11. Shpigel E, Goldlust A, Eshel A, Ber IK, Efroni G, Singer Y, Levy I, Dekel M, Shoseyov O. Expression, purification and applications of staphylococcal Protein A fused to cellulose-binding domain. *Biotechnol Appl Bioc*. 2000;31:197–203.
12. Ramos R, Moreira S, Rodrigues A, Gama M, Domingues L. Recombinant expression and purification of the antimicrobial peptide magainin-2. *Biotechnol Progr*. 2013;29:17–22.
13. Ong E, Alimonti J, Greenwood J, Miller JR, Warren R, Kilburn D. Purification of human interleukin-2 using the cellulose-binding domain of a prokaryotic cellulase. *Bioseparation*. 1995;5:95–104.
14. Boraston AB, McLean BW, Guarna MM, Amandaron-Akow E, Kilburn DG. A family 2a carbohydrate-binding module suitable as an affinity tag for proteins produced in *Pichia pastoris*. *Protein Express Purif*. 2001;21:417–23.
15. Sugimoto N, Igarashi K, Samejima M. Cellulose affinity purification of fusion proteins tagged with fungal family 1 cellulose-binding domain. *Protein Express Purif*. 2012;82:290–6.
16. Kavooosi M, Meijer J, Kwan E, Creagh AL, Kilburn DG, Haynes CA. Inexpensive one-step purification of polypeptides expressed in *Escherichia coli* as fusions with the family 9 carbohydrate-binding module of xylanase 10A from *T. maritima*. *J Chromatogr B*. 2004;807:87–94.
17. Wang S, Cui G-Z, Song X-F, Feng Y, Cui QJ. Efficiency and stability enhancement of cis-epoxysuccinic acid hydrolase by fusion with a carbohydrate binding module and immobilization onto cellulose. *Appl Biochem Biotech*. 2012;168:708–17.
18. Cuskin F, Flint JE, Gloster TM, Morland C, Baslé A, Henrissat B, Coutinho PM, Strazzulli A, Solovyova AS, Davies GJ. How nature can exploit non-specific catalytic and carbohydrate binding modules to create enzymatic specificity. *P Natl A Sci USA*. 2012;109:20889–94.
19. Wanker E, Huber A, Schwab H. Purification and characterization of the *Bacillus subtilis* levanase produced in *Escherichia coli*. *Appl Environ Microb*. 1995;61:1953–8.
20. Soler LF, Cedano J, Querol E, De Llorens R. Cloning, expression and purification of human epidermal growth factor using different expression systems. *J Chromatogr B*. 2003;788:113–23.
21. Su Z, Huang Y, Zhou Q, Wu Z, Wu X, Zheng Q, Ding C, Li X. High-level expression and purification of human epidermal growth factor with SUMO fusion in *Escherichia coli*. *Protein Peptide Lett*. 2006;13:785–92.
22. Ma Y, Yu J, Lin J, Wu S, Li S, Wang J. High efficient expression, purification, and functional characterization of native human epidermal growth factor in *Escherichia coli*. *BioMed Res Int*. 2016;2016:3758941.
23. Nguyen MT, Krupa M, Koo B-K, Song J-A, Vu TTT, Do BH, Nguyen AN, Seo T, Yoo J, Jeong B. Prokaryotic soluble overexpression and purification of human VEGF165 by fusion to a maltose binding protein tag. *PLoS ONE*. 2016;11:e0156296.
24. Hacker DL, Ordóñez-Morán P. Large-scale production of recombinant noggin and R-spondin1 proteins required for the maintenance of stem cells in intestinal organoid cultures. In: *Intestinal stem cells*. Springer; 2020. p. 171–184.
25. Sathyamurthy M, Lee JS, Park JH, Kim YJ, Jeong JY, Jang JW, Lee GM. Overexpression of PACesol improves BMP-7 processing in recombinant CHO cells. *J Bacteriol*. 2013;164:336–9.
26. O'Flaherty R, Bergin A, Flampouri E, Mota LM, Obaidi I, Quigley A, Xie Y, Butler M. Mammalian cell culture for production of recombinant proteins: A review of the critical steps in their biomanufacturing. *Biotechnol Adv*. 2020;43:107552.
27. Basso A, Serban S. Industrial applications of immobilized enzymes—a review. *Mol Catal*. 2019;479:110607.
28. Liu D, Schmid R, Rusnak M. Functional expression of *Candida antarctica* lipase B in the *Escherichia coli* cytoplasm—a screening system for a frequently used biocatalyst. *Appl Microbiol Biot*. 2006;72:1024–32.
29. Hong SY, Jung EJ, Joo JC, Yoo YJ. Soluble expression of *Candida antarctica* lipase B in *Escherichia coli* by fusion with Skp chaperone. *Biotechnol Bioproc E*. 2012;17:687–92.
30. Jung S, Park S. Improving the expression yield of *Candida antarctica* lipase B in *Escherichia coli* by mutagenesis. *Biotechnol Lett*. 2008;30:717–22.
31. Larsen MW, Bornscheuer UT, Hult K. Expression of *Candida antarctica* lipase B in *Pichia pastoris* and various *Escherichia coli* systems. *Protein Express Purif*. 2008;62:90–7.
32. Jung H-J, Kim S-K, Min W-K, Lee S-S, Park K, Park Y-C, Seo J-H. Polycationic amino acid tags enhance soluble expression of *Candida antarctica* lipase B in recombinant *Escherichia coli*. *Bioproc Biosyst Eng*. 2011;34:833.
33. Zhou X, Han Y, Lv Z, Tian X, Li H, Xie P, Zheng L. Simultaneously achieve soluble expression and biomimetic immobilization of *Candida antarctica* lipase B by introducing polyamine tags. *J Biotechnol*. 2017;249:1–9.
34. Zheng Y-G, Yin H-H, Yu D-F, Chen X, Tang X-L, Zhang X-J, Xue Y-P, Wang Y-J, Liu Z-Q. Recent advances in biotechnological applications of alcohol dehydrogenases. *Appl Microbiol Biot*. 2017;101:987–1001.
35. Yoshida S, Hiraga K, Takehana T, Taniguchi I, Yamaji H, Maeda Y, Toyohara K, Miyamoto K, Kimura Y, Oda K. A bacterium that degrades and assimilates poly (ethylene terephthalate). *Science*. 2016;351:1196–9.
36. Han X, Liu W, Huang J-W, Ma J, Zheng Y, Ko T-P, Xu L, Cheng Y-S, Chen C-C, Guo R-T. Structural insight into catalytic mechanism of PET hydrolase. *Nat Commun*. 2017;8:1–6.
37. Joo S, Cho IJ, Seo H, Son HF, Sagong H-Y, Shin TJ, Choi SY, Lee SY, Kim K-J. Structural insight into molecular mechanism of poly (ethylene terephthalate) degradation. *Nat Commun*. 2018;9:1–12.
38. Austin HP, Allen MD, Donohoe BS, Rorrer NA, Kearns FL, Silveira RL, Pollard BC, Dominick G, Duman R, El Omari K. Characterization and engineering of a plastic-degrading aromatic polyesterase. *P Natl A Sci USA*. 2018;115:E4350–7.
39. Fecker T, Galaz-Davison P, Engelberger F, Narui Y, Sotomayor M, Parra LP, Ramirez-Sarmiento CA. Active site flexibility as a hallmark for efficient PET degradation by *I. sakaiensis* PETase. *Biophys J*. 2018;114:1302–12.
40. Liu B, He L, Wang L, Li T, Li C, Liu H, Luo Y, Bao R. Protein crystallography and site-direct mutagenesis analysis of the poly (ethylene terephthalate) hydrolase PETase from *Ideonella sakaiensis*. *ChemBioChem*. 2018;19:1471–5.
41. Kapust RB, Waugh DS. *Escherichia coli* maltose-binding protein is uncommonly effective at promoting the solubility of polypeptides to which it is fused. *Protein Sci*. 1999;8:1668–74.
42. Bach H, Mazor Y, Shaky S, Shoham-Lev A, Berdichevsky Y, Gutnick DL, Benhar I. *Escherichia coli* maltose-binding protein as a molecular chaperone for recombinant intracellular cytoplasmic single-chain antibodies. *J Mol Biol*. 2001;312:79–93.
43. Oliveira C, Carvalho V, Domingues L, Gama FM. Recombinant CBM-fusion technology—applications overview. *Biotechnol Adv*. 2015;33:358–69.
44. Shoseyov O, Shani Z, Levy I. Carbohydrate binding modules: biochemical properties and novel applications. *Microbiol Mol Biol Rev*. 2006;70:283–95.
45. Lebendiker M, Danieli T. Purification of proteins fused to maltose-binding protein. In: *Protein chromatography*. Springer; 2011. p. 281–293.
46. Ko H, Bae J-H, Sung BH, Kim M-J, Kim C-H, Oh B-R, Sohn J-H. Efficient production of levan using a recombinant yeast *Saccharomyces cerevisiae* hypersecreting a bacterial levansucrase. *J Ind Microbiol Biot*. 2019;46:1611–20.
47. Joo S, Cho IJ, Seo H, Son HF, Sagong H-Y, Shin TJ, Choi SY, Lee SY, Kim K-J. Structural insight into molecular mechanism of poly (ethylene terephthalate) degradation. *Nat Commun*. 2018;9:382.
48. Maina CV, Riggs PD, Grandea AG III, Slatko BE, Moran LS, Tagliamonte JA, McReynolds LA. An *Escherichia coli* vector to express and purify foreign proteins by fusion to and separation from maltose-binding protein. *Gene*. 1988;74:365–73.
49. Smith DB, Johnson KS. Single-step purification of polypeptides expressed in *Escherichia coli* as fusions with glutathione S-transferase. *Gene*. 1988;67:31–40.
50. Lavallie ER, DiBlasio EA, Kovacic S, Grant KL, Schendel PF, McCoy JM. A thioredoxin gene fusion expression system that circumvents inclusion body formation in the *E. coli* cytoplasm. *Nat Biotechnol*. 1993;11:187.
51. Davis GD, Elisee C, Newham DM, Harrison RG. New fusion protein systems designed to give soluble expression in *Escherichia coli*. *Biotechnol Bioeng*. 1999;65:382–8.
52. Butt TR, Edavettal SC, Hall JP, Mattern MR. SUMO fusion technology for difficult-to-express proteins. *Protein Express Purif*. 2005;43:1–9.
53. Gaberc-Porekar V, Menart V. Perspectives of immobilized-metal affinity chromatography. *J Biochem Biophys Meth*. 2001;49:335–60.
54. Einhauser A, Jungbauer A. The FLAG™ peptide, a versatile fusion tag for the purification of recombinant proteins. *J Biochem Biophys Methods*. 2001;49:455–65.

55. Schmidt TG, Skerra A. One-step affinity purification of bacterially produced proteins by means of the "Strep tag" and immobilized recombinant core streptavidin. *J Chromatogr A*. 1994;676:337–45.

### **Publisher's Note**

Springer Nature remains neutral with regard to jurisdictional claims in published maps and institutional affiliations.

**Ready to submit your research? Choose BMC and benefit from:**

- fast, convenient online submission
- thorough peer review by experienced researchers in your field
- rapid publication on acceptance
- support for research data, including large and complex data types
- gold Open Access which fosters wider collaboration and increased citations
- maximum visibility for your research: over 100M website views per year

**At BMC, research is always in progress.**

Learn more [biomedcentral.com/submissions](https://biomedcentral.com/submissions)

