

RESEARCH ARTICLE

Open Access



# LncRNA KCNQ1OT1 promotes the metastasis of ovarian cancer by increasing the methylation of *EIF2B5* promoter

Si-Li He<sup>1</sup>, Ya-Ling Chen<sup>2</sup>, Qi-Hua Chen<sup>3</sup>, Qi Tian<sup>4</sup> and Shui-Jing Yi<sup>1\*</sup> 

## Abstract

**Background:** Long non-coding RNAs (lncRNAs) have emerged as regulators of human malignancies, including ovarian cancer (OC). LncRNA KCNQ1OT1 could promote OC progression, and EIF2B5 was associated with development of several tumors. This project was aimed to explore the role of lncRNA KCNQ1OT1 in OC development, as well as the involving action mechanism.

**Methods:** Reverse transcription quantitative polymerase chain reaction (RT-qPCR) or Western blotting was employed to determine the expression levels of KCNQ1OT1 and EIF2B5. OC cell proliferation was evaluated by MTT and colony formation assays, and wound healing and Transwell assays were implemented to monitor cell migration and invasion, respectively. The methylation status of EIF2B5 promoter was examined by MS-PCR, to clarify whether the expression of EIF2B5 was decreased. The binding activity of KCNQ1OT1 to methyltransferases DNMT1, DNMT3A and DNMT3B was determined by dual luciferase reporter assay or RIP assay, to explore the potential of KCNQ1OT1 alters the expression of its downstream gene. ChIP assay was carried out to verify the combination between EIF2B5 promoter and above three methyltransferases.

**Results:** Expression of lncRNA KCNQ1OT1 was increased in OC tissues and cells. EIF2B5 expression was downregulated in OC, which was inversely correlated with KCNQ1OT1. Knockdown of KCNQ1OT1 inhibited OC cell proliferation and metastasis. KCNQ1OT1 could downregulate EIF2B5 expression by recruiting DNA methyltransferases into EIF2B5 promoter. Furthermore, interference of EIF2B5 expression rescued KCNQ1OT1 depletion-induced inhibitory impact on OC cell proliferation and metastasis.

**Conclusion:** Our findings evidenced that lncRNA KCNQ1OT1 aggravated ovarian cancer metastasis by decreasing EIF2B5 expression level, and provided a novel therapeutic strategy for OC.

## Highlights

1. LncRNA KCNQ1OT1 is upregulated, while EIF2B5 is downregulated in OC tissues and cells.
2. Knockdown of KCNQ1OT1 represses OC cell proliferation and metastasis.

\*Correspondence: 986315943@qq.com

<sup>1</sup> Department of Gynaecology, The Third Xiangya Hospital of Central South University, No. 138, Tongzipo Road, Changsha 410013, Hunan Province, People's Republic of China

Full list of author information is available at the end of the article



© The Author(s) 2022. **Open Access** This article is licensed under a Creative Commons Attribution 4.0 International License, which permits use, sharing, adaptation, distribution and reproduction in any medium or format, as long as you give appropriate credit to the original author(s) and the source, provide a link to the Creative Commons licence, and indicate if changes were made. The images or other third party material in this article are included in the article's Creative Commons licence, unless indicated otherwise in a credit line to the material. If material is not included in the article's Creative Commons licence and your intended use is not permitted by statutory regulation or exceeds the permitted use, you will need to obtain permission directly from the copyright holder. To view a copy of this licence, visit <http://creativecommons.org/licenses/by/4.0/>.

3. KCNQ1OT1 decreases EIF2B5 expression by recruiting DNA methyltransferases into EIF2B5 promoter, thereby promoting OC progression.

**Keywords:** Ovarian cancer, lncRNA KCNQ1OT1, EIF2B5, Methylation, Proliferation, Metastasis, Invasion

## Introduction

Ovarian cancer (OC) is one of the most prevailing tumors derived from reproductive system in women, and ranks as the most lethal gynecological malignancy (Szajnik et al. 2016). Due to lacking obvious symptom at early stage, majority of OC patients were diagnosed at advanced stages, whose 5-year survival rate is about 44% worldwide (Gilbert et al. 2012; Siegel et al. 2019). Though current therapeutic tactics, like surgery, immunotherapy and targeted therapies, have worked much. Overall prognosis of OC patients is not optimistic, and recurrence post treatment is prone (Odunsi 2017; Hennessy et al. 2009). Hence, further investigation on the molecular mechanism of OC occurrence and progression might be beneficial to clinical therapy.

lncRNAs are non-coding RNAs with more than 200 nucleotides long, that involved in multiple cellular processes, such as cell survival, proliferation, mobility and differentiation (Peng et al. 2016). With the improvement of sequencing technology, numerous lncRNAs were discovered, and certain dysregulated lncRNAs were manifested to be associated with OC progression (Zhong et al. 2016). lncRNA KCNQ1 opposite strand/antisense transcript 1 (KCNQ1OT1) was a well-established promoting factor of OC growth and metastasis (Liu et al. 2020). Additionally, a recent study reported that KCNQ1OT1 participated in Yin Yang 1 (YY1)-mediated tumor-promoting effects on Triple-negative breast cancer (TNBC) through its interactions with DNMT1, in support of role of KCNQ1OT1 in TNBC (Shen et al. 2020). However, the action mechanism by which KCNQ1OT1 exerted roles in OC has not been fully uncovered.

Eukaryotic translation initiation factor 2B (EIF2B) is essential for mRNA translation containing five subunits, of which EIF2B $\epsilon$  was coded by EIF2B5 (Wortham and Proud 2015). In addition, dysregulated EIF2B5 expression was also corrected with the progression of liver cancer (Jiao et al. 2018), colorectal cancer (Palaniappan et al. 2016) and diffuse large B-cell lymphoma (Unterluggauer et al. 2018). EIF2B5 was lowly expressed in OC tissues, implying its relevance with OC (Hou et al. 2020). MethPrimer 2.0 predicted that there were CpG islands in EIF2B5 promoter region, suggesting that EIF2B5 methylation was increased. Former research indicated that lncRNA could affect DNA methylation, so as to reduce the expression of gene (Fang

et al. 2016). Therefore, we speculated that KCNQ1OT1 might alter EIF2B5 expression by affecting methylation.

In this work, we detected the upregulation of lncRNA KCNQ1OT1 and the downregulation of EIF2B5 in OC tissues and OC A2780, Anglne, SKOV3 and SW626 cells. Moreover, KCNQ1OT1 could decrease EIF2B5 expression by recruiting DNA methyltransferases into EIF2B5 promoter, thereby facilitating OC development and metastasis.

## Materials and methods

### Collection of clinical tissues

Thirty-two pairs of human tissue samples, including tumor tissues and adjacent healthy tissues, were acquired during surgery at the Third Xiangya Hospital of Central South University, then immediately preserved at  $-80^{\circ}\text{C}$ . All tissues were confirmed by pathological diagnosis. Before tissue collection, we had got permission from the Ethics Committees of the Third Xiangya Hospital of Central South University and informed consent from all these 32 OC patients. None of OC patients had received preoperative therapy. Clinicopathological characteristics of all OC patients were listed in Table 1.

### Cell culture and transfection

Human ovarian surface epithelial cells (IOSE-80#, LMAI-Bio, Shanghai, China), OC A2780 cells (CL-0013#, Procell, Wuhan, China), Anglne (CL-0024#, Procell), SKOV3 (HTB-77#, ATCC, Manassas, VA, USA), SW626 (HTB-78#, ATCC), COV362 (07071910#, ECACC, European Collection of Authenticated Cell Cultures), CAO3 (HTB-753#, ATCC) and OVCAR-3 (HTB-161#, ATCC) cells were cultured in a humidified incubator with 5%  $\text{CO}_2$  at  $37^{\circ}\text{C}$ . Cells were maintained in RPMI-1640 medium (Sigma-Aldrich, St. Louis, MO, USA) mixed with 10% FBS (Gibco, Gran Island, NY, USA) and 1% penicillin–streptomycin (Sigma-Aldrich). Lentiviral-based shRNA targeting KCNQ1OT1 (sh-KCNQ1OT1; GenePharma, Shanghai, China) or EIF2B5 (sh-EIF2B5; GenePharma) was stably transfected into SKOV3 and SW626 cells to silence KCNQ1OT1 or EIF2B5 expression, with sh-NC (GenePharma) as negative control.

### Reverse transcription quantitative polymerase chain reaction (RT-qPCR)

Total RNA of clinical tissues or cells was extracted using TRIzol Reagent (Invitrogen, Vienna, Austria), then RNA

**Table 1** Clinical characteristics of OC patients with high and KCNQ1OT1 risk scores

	Case (n)	KCNQ1OT1		P
		Low-risk (n)	High-risk (n)	
Age				
≥ mean	20	12	8	1.0
< mean	12	7	5	
FIGO stage				
I-II	22	18	4	0.0369
III-IV	10	4	6	
Histological type				
I	5	4	1	0.0367
II-III	27	7	20	
Residual tumor (cm)				
< 1 cm	20	10	10	0.7257
≥ 1 cm	12	7	5	
Histology				
Mucinous	5	3	2	1.0
Setous	16	10	6	
Endometrioid	7	4	3	
Clear cell	4	2	2	
Lymphatic metastasis				
No	18	8	10	0.7224
Yes	14	8	6	
Ascites				
No	15	9	6	1.0
Yes	17	10	7	

quality was determined using NanoDrop ND-1000 spectrophotometer (NanoDrop Technologies, Wilmington, DE, USA). Then cDNA was synthesized with 1 μg RNA template and M-MLV Reverse Transcriptase (Invitrogen). RT-qPCR was performed using SYBR Green PCR Kit (Qiagen, Frankfurt, Germany) to evaluate the expression of KCNQ1OT1, EIF2B5, DNMT1, DNMT3A and DNMT3B, with GAPDH as internal control. Relative expression was analyzed using  $2^{-\Delta\Delta Ct}$  method (Livak and Schmittgen 2001). All RT-qPCR primers were synthesized by Sangon Biotech (Shanghai, China), and primer sequence was shown in Table 2.

**Western blotting**

Clinical tissues or cells were lysed in RIPA buffer (Beyotime, Nantong, China) to extract protein samples, and a BCA Kit (Beyotime) was used to determine protein concentration. Then, 40 μg protein samples were loaded onto 12% fresh SDS-PAGE and transferred to PVDF membranes (Merck Millipore, Darmstadt, Germany). Membranes were blocked with 5% non-fat milk and incubated with rabbit primary antibody anti-EIF2B5 (ab181033; Abcam, Shanghai, China), anti-E-cadherin (ab40772;

**Table 2** The primer sequence for RT-qPCR assay

Gene	Sequence	
	Forward (5'-3')	Reverse (5'-3')
KCNQ1OT1	TTGGTAGGATTTTGTGAGG	CAACCTTCCCCTACTACC
EIF2B5	TCTGGCACTGTCATTGGC AGCA	GAGACTGATGGATCTGTG CTCC
DNMT1	AGGTGGAGAGTTATGACG AGGC	GGTAGAATGCCTGATGGT CTGC
DNMT3A	CCTCTCGTTGGAGGAAT GTGC	GTTCCGCACATGAGCAC CTCA
DNMT3B	TAACAACGGCAAAGACCG AGGG	TCCTGCCACAAGACAAAC AGCC
GAPDH	CCATGTTTCGTCATGGTGTG	GGTGCTAAGCAGTTGGTGGTG

Abcam), anti-N-cadherin (ab76011; Abcam), anti-DNMT1 (ab188453; Abcam), anti-DNMT3A (ab2850; Abcam), anti-DNMT3B (ab2851; Abcam) or Loading Control anti-GAPDH (ab199554; Abcam), then probed with secondary antibody (ab205718; Abcam). Signals were detected using ECL detection kit (Millipore), and analyzed by Image J software (NIH, Bethesda, MD, USA).

**Cell viability assessment**

After transfection,  $3 \times 10^3$  SKOV3 and SW626 cells seeded in 96-well plates were incubated with 20 μL MTT (Beyotime) for additional 4 h. After removing medium, DMSO was added to dissolve the formazan. 10 min later, the absorbance at 570 nm was recorded using a microplate reader (Bio-Rad, Hercules, CA, USA).

**Colony formation assay**

600 transfected SKOV3 and SW626 cells were placed in 6-well plates and continually cultured for 2 weeks at 37 °C. Visible colonies were fixed and stained with 4% paraformaldehyde (Sigma-Aldrich) and crystal violet (Beyotime), respectively. Then, colonies were counted utilizing Image J software.

**Cell migration and invasion assay**

OC cells are prone to migrate and invade into the peritoneum and underlying organs (Zhang and Zou 2015). Here, cell migration was examined by wound healing assay. After transfection, SKOV3 and SW626 cells were maintained in 6-well plates containing FBS-free RPMI-1640 medium until confluence reached 80%. A sterile pipette tip (10 μL; Corning Inc., Corning, NY, USA) was applied to create a scratch through the monolayer. Then, PBS was used to wash away detached cells, and cell migration was monitored at same position using a microscope (Nikon, Tokyo, Japan) at 0 h and 24 h after scratch-making.

Transwell chambers (Corning Inc.) pre-enveloped with Matrigel (BD Bioscience, San Jose, CA, USA) were utilized to detect cell invasion. Transfected SKOV3 and SW626 cells suspended in FBS-free medium were transferred to upper chambers. Additionally, complete medium was added to lower ones. 24 h later, invaded cells were fixed with 4% paraformaldehyde, stained with crystal violet and counted under a microscope.

#### Nuclear-cytoplasmic fractionation

The current assay combined with RT-qPCR assay were applied to investigate the subcellular location of lncRNA KCNQ1OT1 in OC cells. Firstly, cytoplasmic and nuclear RNA derived from SKOV3 and SW626 cells were separated using a Purification Kit (Norgen Biotek, Thorold, Canada) as instructed by the supplier. Furthermore, GAPDH and U6 snRNA served as internal control for cytoplasmic and nuclear fractions, respectively.

#### Fluorescence in situ hybridization (FISH) analysis

FISH assay was executed to determine the cellular localization of lncRNA KCNQ1OT1 in OC cells. The oligonucleotide probe for KCNQ1OT1 was supplied by Biosense (Guangzhou, China). After mixture with probe mixture (10  $\mu$ L, Biosense) in the dark overnight, cell nuclei of SKOV3 and SW626 was dyed with 4,6-diamidino-2-phenylindole (DAPI; Beyotime) and visualized under a fluorescence microscope (Olympus).

#### MS-PCR assay

This assay was executed to detect the methylation status of the EIF2B5 promoter referring to a former research (Real et al. 2018). The genomic DNA of SKOV3 and SW626 cells was isolated using a commercial kit (TIANGEN, Beijing, China), and a DNA Methylation-Gold™ kit (D5005, Zymo Research, Irvine, CA, USA) was exploited to assess the methylation level of EIF2B5 promoter. Methylated (M) and unmethylated (U) primers were: EIF2B5-M-forward, 5'-GTGATAATGTTGAGGTTAAGGAAC-3' and EIF2B5-M-reverse, 5'-AAACAACGTAATATTTAAACCCACG-3'; EIF2B5-U-forward, 5'-TGATAATGTTGAGGTTAAGGAAT-3' and EIF2B5-U-reverse, 5'-AAC AACATAATATTTAAACCCACAACC-3'. PCR reaction products were then detected by agarose gel electrophoresis, then images were collected and analyzed.

#### RIP assay

The combining potency of KCNQ1OT1 to DNMT1, DNMT3A and DNMT3B was estimated by RIPseq database (<http://pridb.gdc.broadinstitute.org/RIPSeq/>). Then RIP assay was carried out to demonstrate the binding potential of KCNQ1OT1 to DNMT1, DNMT3A and DNMT3B proteins. SKOV3 and SW626 cells were lysed in lysis

buffer (Beyotime), then generated cell lysate was incubated with the mixture of magnetic beads re-suspended in RIP Wash Buffer (Merck Millipore) and rabbit anti-DNMT1, anti-DNMT3A, anti-DNMT3B or NC anti-IgG (ab133470; Abcam) at 4 °C overnight. After treatment with Proteinase K (Invitrogen), RNA levels were evaluated via RT-qPCR assay.

#### ChIP assay

Until cell confluence reached 80%, SKOV3 and SW626 cells were fixed with 1% formaldehyde for 10 min, allowing intracellular DNA and protein to crosslink, followed by ultrasonic treatment. After centrifugation (13,000 rpm, at 4 °C), generated supernatant was incubated with anti-DNMT1, anti-DNMT3A and anti-DNMT3B, or incubated with negative control anti-IgG at 4 °C overnight. Then endogenous DNA-protein complex was precipitated as previously described (Chen et al. 2019). And enrichment of EIF2B5 promoter fragment binding to DNMT1, DNMT3A, and DNMT3B was analyzed by RT-qPCR assay with specific primers for promoter region of EIF2B5 gene: forward, 5'-CTTTCCATGTTTCGCCATCT-3' and reverse, 5'-AAAGTCCACTGGCACCAAAC-3'.

#### Statistical analysis

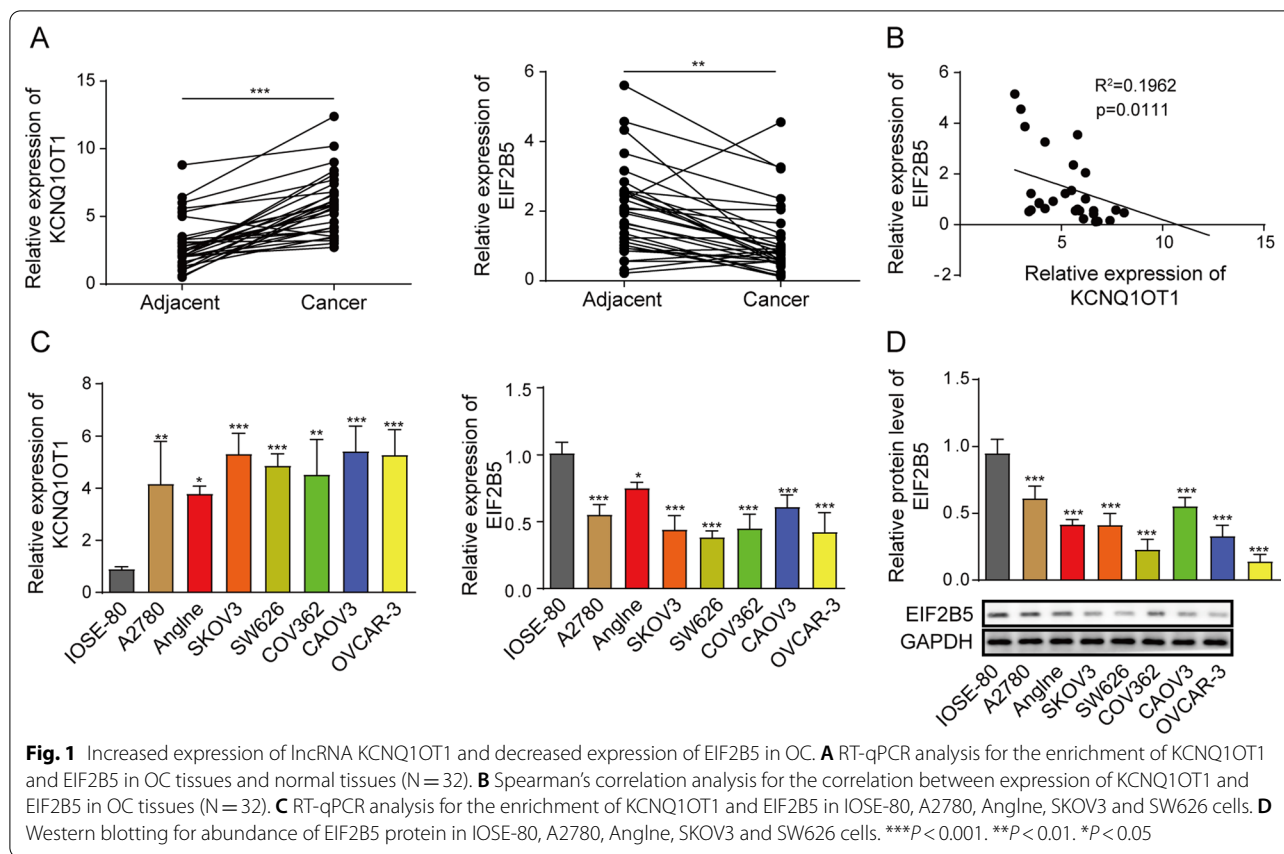
All assays in this work were performed  $\geq 3$  times. Data analysis was implemented by SPSS 21.0 software and exhibited as mean  $\pm$  SD. Student's *t*-test or ANOVA was applied to compare differences in groups. The correction between levels of KCNQ1OT1 and EIF2B5 in OC tissues was evaluated by Spearman's correlation coefficient.  $P < 0.05$  meant statistically significant.

## Results

### Increased expression of lncRNA KCNQ1OT1 and decreased expression EIF2B5 in OC

Initially, we assessed expression of lncRNA KCNQ1OT1 and EIF2B5 in 32 pairs of OC tissues and normal tissues via RT-qPCR assay. Data demonstrated that KCNQ1OT1 expression was increased in OC tissues relative to normal tissues, while EIF2B5 was lowly expressed (Fig. 1A). Spearman's correlation analysis disclosed the negative correlation between expression of KCNQ1OT1 and EIF2B5 in OC tissues ( $R^2 = 0.1962$ ) (Fig. 1B). Though this finding was inconsistent with TCGA dataset, which might be associated with locality and tissue specificity of KCNQ1OT1 and EIF2B5. Additionally, the upregulation of KCNQ1OT1 and the downregulation of EIF2B5 were detected in A2780, Anglne, SKOV3 and SW626 cells when compared with IOSE-80 cells (Fig. 1C, D). Above results indicated that KCNQ1OT1 was upregulated, while EIF2B5 was downregulated in OC.





### KCNQ1OT1 depletion suppressed the malignant behaviors of OC cells

The dysregulation of KCNQ1OT1 encouraged us to investigate its functional effects on OC progression. ShRNA against KCNQ1OT1 was introduced into SKOV3 and SW626 cells, and the knockdown efficiency was confirmed via RT-qPCR assay, with sh-NC as negative control (Fig. 2A). Subsequently, a series of loss-of-function assays were carried out. MTT assay demonstrated that KCNQ1OT1 knockdown decreased the cell viability of OC cells (Fig. 2B). And less colonies were detected in sh-KCNQ1OT1 group compared to sh-NC group, as uncovered by colony formation assay (Fig. 2C). Wound healing assay and Transwell assay revealed that depletion of KCNQ1OT1 inhibited migration and invasion of SKOV3 and SW626 cells, respectively (Fig. 2D, E). Epithelial mesenchymal transition (EMT) is associated with tumorigenesis, and

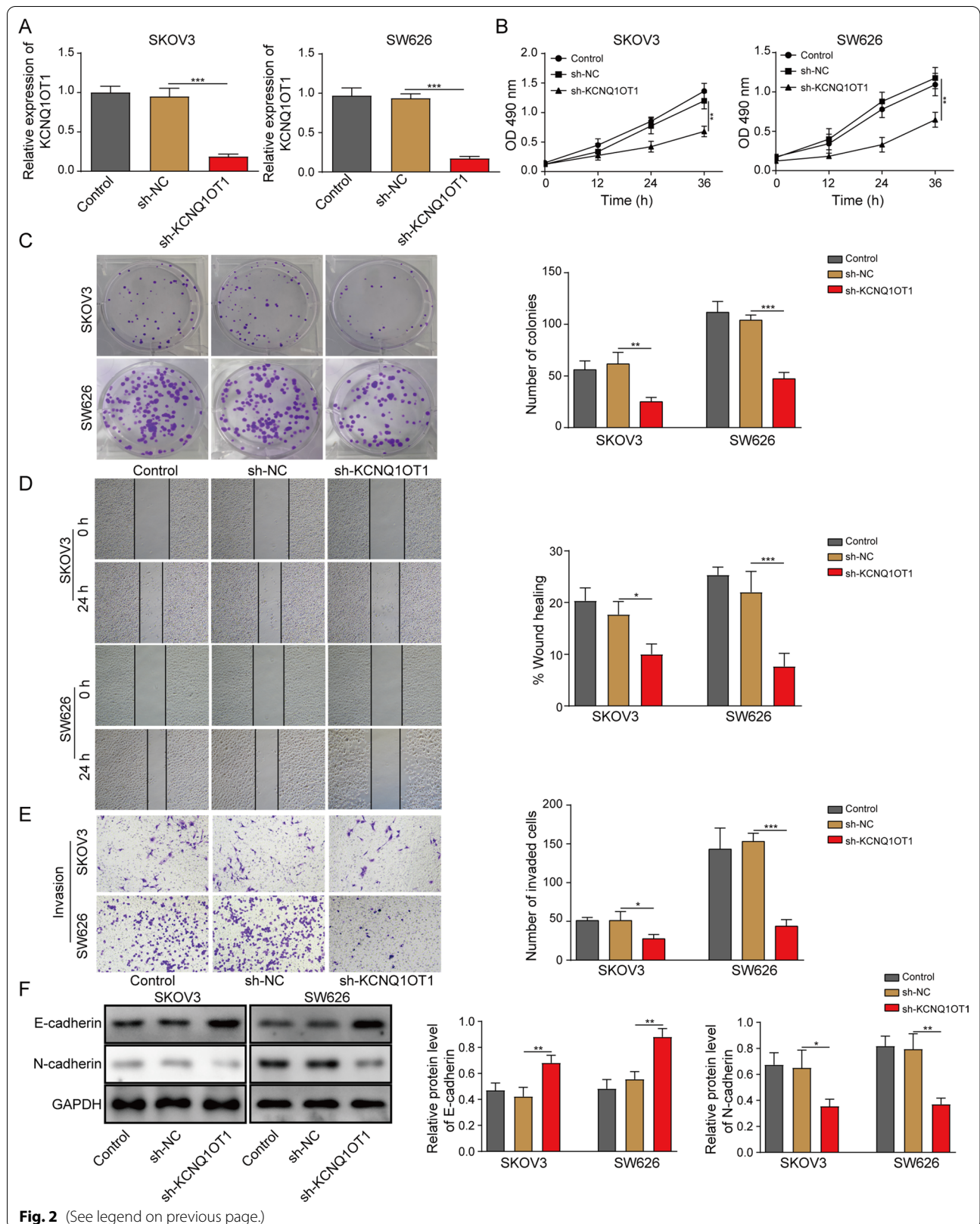
gives tumor cells migratory and invasive abilities (Tan et al. 2016). Additionally, EMT is characterized by the decreased expression of epithelial markers (including E-cadherin,  $\alpha$ - and  $\beta$ -catenin) and increased expression of mesenchymal markers (including N-cadherin and vimentin). Here, Western blotting was applied for examining the levels of epithelial marker E-cadherin and mesenchymal marker N-cadherin, and results showed that KCNQ1OT1 deficiency increased E-cadherin level, while reduced N-cadherin level in OC cells (Fig. 2F). Taken together, KCNQ1OT1 knockdown repressed the proliferation and migration of OC.

### lncRNA KCNQ1OT1 could decrease EIF2B5 expression by promoting EIF2B5 methylation

We then evaluated the influence of KCNQ1OT1 on EIF2B5 expression in OC cells. As illustrated in Fig. 3A, B, silencing of KCNQ1OT1 increased EIF2B5 expression

(See figure on next page.)

**Fig. 2** KCNQ1OT1 depletion suppressed the malignant behaviors of OC cells. SKOV3 and SW626 cells were transfected with Control (blank), sh-NC or sh-KCNQ1OT1. **A** RT-qPCR analysis for the enrichment of KCNQ1OT1 in transfected cells. **B** MTT assay for the cell viability of transfected cells. **C** Colony formation assay for the cell clonogenicity capacity of transfected cells. **D** Wound healing assay for the cell migration of transfected cells. **E** Transwell assay for the cell invasion of transfected cells. **F** Western blotting for abundance of E-cadherin and N-cadherin proteins in transfected cells. \* $P < 0.05$



in SKOV3 and SW626 cells. Data of Nuclear-cytoplasmic fractionation experiment and FISH analysis showed lncRNA KCNQ1OT1 located in nucleus and cytoplasm of SKOV3 and SW626 cells, and mainly in nucleus (Fig. 3C, D). Later, the mechanistic way of KCNQ1OT1 affected the expression of EIF2B5 was explored in SKOV3 and SW626 cells. MethPrimer 2.0 (<http://www.urogene.org/methprimer2/tester-invitation.html>) predicted that there existed CpG islands in the EIF2B5 promoter region (Fig. 3E). Furthermore, MS-PCR manifested that KCNQ1OT1 knockdown strikingly decreased the methylation level of EIF2B5 in SKOV3 and SW626 cells, in comparison with that in cell transfected with sh-NC (Fig. 3F). In sum, lncRNA KCNQ1OT1 could reduce EIF2B5 expression level by promoting EIF2B5 methylation.

#### **lncRNA KCNQ1OT1 increased EIF2B5 promoter methylation by recruiting DNA methyltransferases into its promoter region**

In order to further explore the regulatory mechanism between KCNQ1OT1 and EIF2B5, we analyzed the impact of KCNQ1OT1 on enrichment of DNA methyltransferases (DNMT1, DNMT3A and DNMT3B). As exhibited in Fig. 4A, B, KCNQ1OT1 deficiency remarkably decreased levels of DNMT1, DNMT3A and DNMT3B in SKOV3 and SW626 cells. Furthermore, RPIseq database showed a combining potential between KCNQ1OT1 and DNMT1, DNMT3A as well as DNMT3B, with interaction probabilities exceeding 0.5 (Fig. 4C). Following RIP assay uncovered that KCNQ1OT1 knockdown resulted in a significantly declined enrichment of DNMT1, DNMT3A and DNMT3B (Fig. 4D). Additionally, CHIP manifested that abundance of DNMT1, DNMT3A and DNMT3B was decreased in EIF2B5 promoter due to KCNQ1OT1 downregulation (Fig. 4E). Collectively, KCNQ1OT1 negatively regulated EIF2B5 expression via recruiting DNA methyltransferases into EIF2B5 promoter.

#### **EIF2B5 inhibition largely relieved the inhibitory impact of KCNQ1OT1 depletion on the malignant behaviors of OC cells**

To study whether the role of KCNQ1OT1 in OC progression was attributed to EIF2B5, shRNAs against KCNQ1OT1 and EIF2B5 were co-transfected into SKOV3 and SW626 cells. We found that the KCNQ1OT1 depletion-induced the increased EIF2B5 level in SKOV3 and SW626 cells was attenuated by EIF2B5 inhibition (Fig. 5A, B). In addition, silencing of KCNQ1OT1-induced the declined cell viability (Fig. 5C), clonogenicity (Fig. 5D), migration and invasion (Fig. 5E, F), as well as the elevated E-cadherin level and decreased N-cadherin level (Fig. 5G) in OC cells were all almost rescued by EIF2B5 inhibition. To

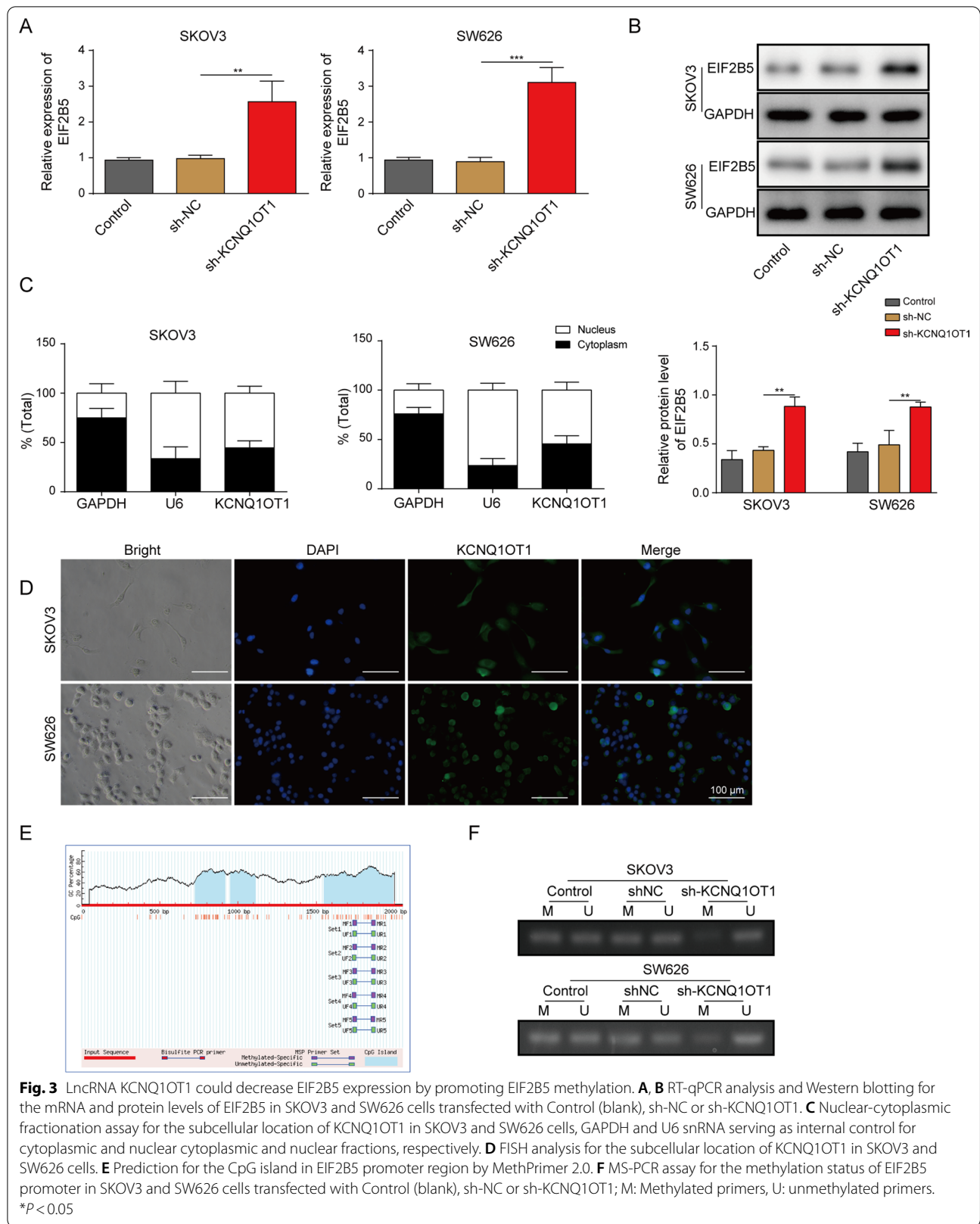
sum up, KCNQ1OT1 knockdown inhibited OC progression by increasing EIF2B5 expression.

#### **Discussion**

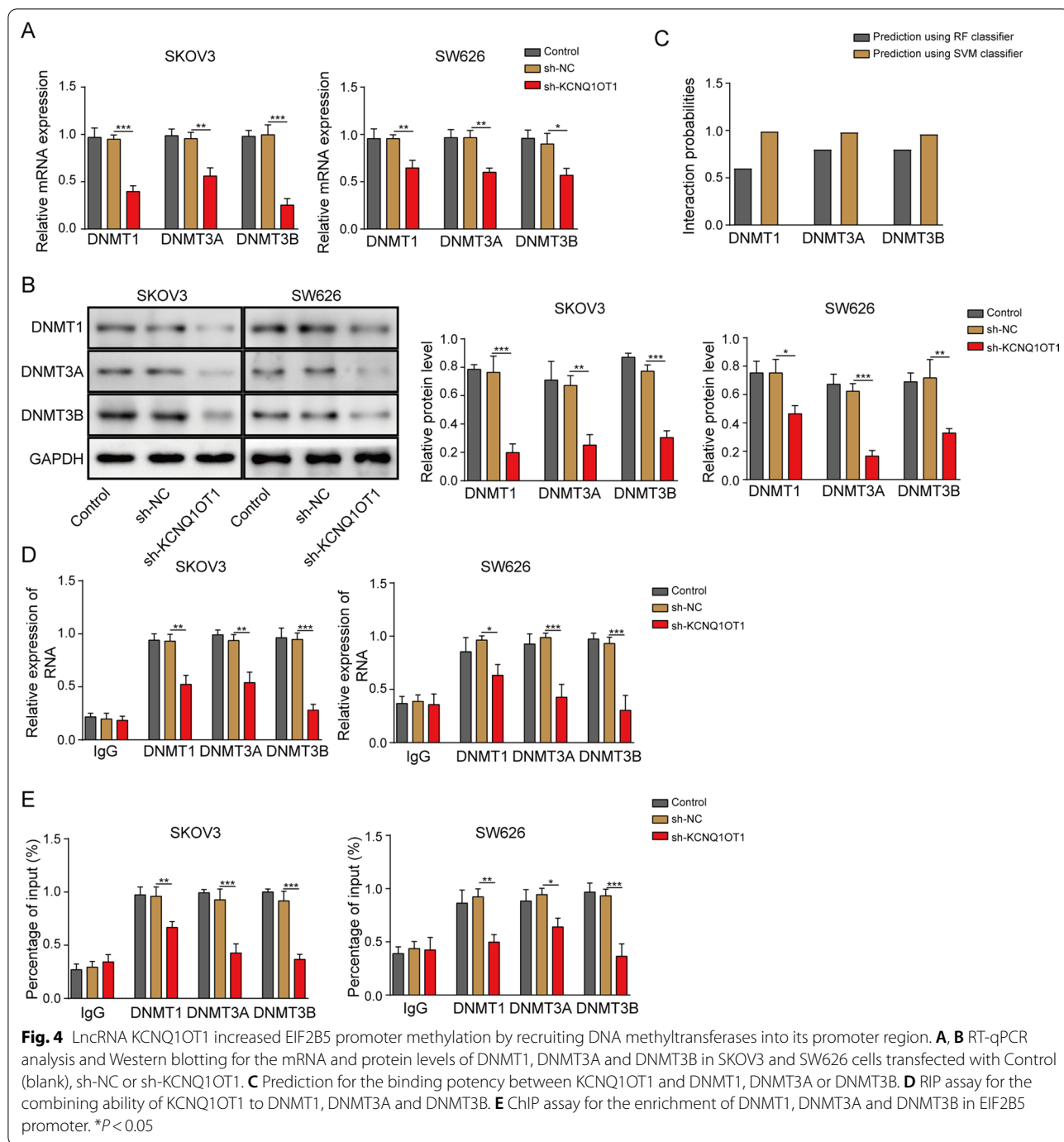
OC induces the highest mortality among malignancies derived from female reproductive system, resulting in approximately  $1.5 \times 10^5$  deaths annually (Permeth-Wey and Sellers 2009; Torre et al. 2018). Risk factors of OC include delivery, OC family history, body mass index (BMI) and smoking, of which BMI and smoking are closely associated with aggressive and fatal OC (Fortner et al. 2019). While, the mechanism of OC occurrence and development remains to be further explored. In this study, we detected the obvious upregulation of lncRNA KCNQ1OT1 in OC. Furthermore, we were the first to manifest that KCNQ1OT1 could contribute to the malignant properties of OC cells by downregulating EIF2B5 expression.

lncRNAs could perform as efficient biomarkers for OC diagnosis and prognosis clinically, and certain lncRNAs have potential to serve as molecular therapy targets (Zhong et al. 2016). Also, lncRNAs were implicated with OC acquired chemoresistance to platinum- and taxane-based medicine (Elsayed et al. 2020). lncRNA KCNQ1OT1 was multifunctional in human diseases, including tumors. For example, KCNQ1OT1 depletion could suppress cardiac hypertrophy by sponging miR-2054 and decreasing AKT3 expression (Chen et al. 2020a). KCNQ1OT1 promoted atherosclerosis development by modulating miR-452-3p/HDAC3/ABCA1 pathway (Yu et al. 2020). Additionally, KCNQ1OT1 exerted tumor-promoting roles in colorectal carcinogenesis (Chen et al. 2020b), non-small-cell lung carcinoma (Dong et al. 2019), hepatocellular carcinoma (Xu et al. 2020), bladder cancer (Wang et al. 2019a), glioma (Ding et al. 2020), osteosarcoma (Wang et al. 2019b), gastric cancer (Wang et al. 2020) and OC (Liu et al. 2020). Consistent to research of Liu et al. (2020), we found that KCNQ1OT1 expression was increased in OC tissues and cells. Moreover, our data also suggested that KCNQ1OT1 could positively regulate growth, metastasis and EMT of OC cells. Collectively, KCNQ1OT1 functioned as an oncogenic factor in human tumors.

EIF2B5 was disclosed to modulate the initial stage of protein synthesis, that could expedite angiogenesis and tumor growth (Fogli and Boespflug-Tanguy 2006). Enhanced EIF2B5 expression could indicate poor prognosis of liver cancer patients (Jiao et al. 2018). High EIF2B5 expression was associated with worse survival of colorectal cancer patients (Palaniappan et al. 2016). Furthermore, depletion of EIF2B5 facilitated MYC-driven apoptosis of colorectal cancer SW480 cells (Schmidt et al. 2019). Hou et al. demonstrated that





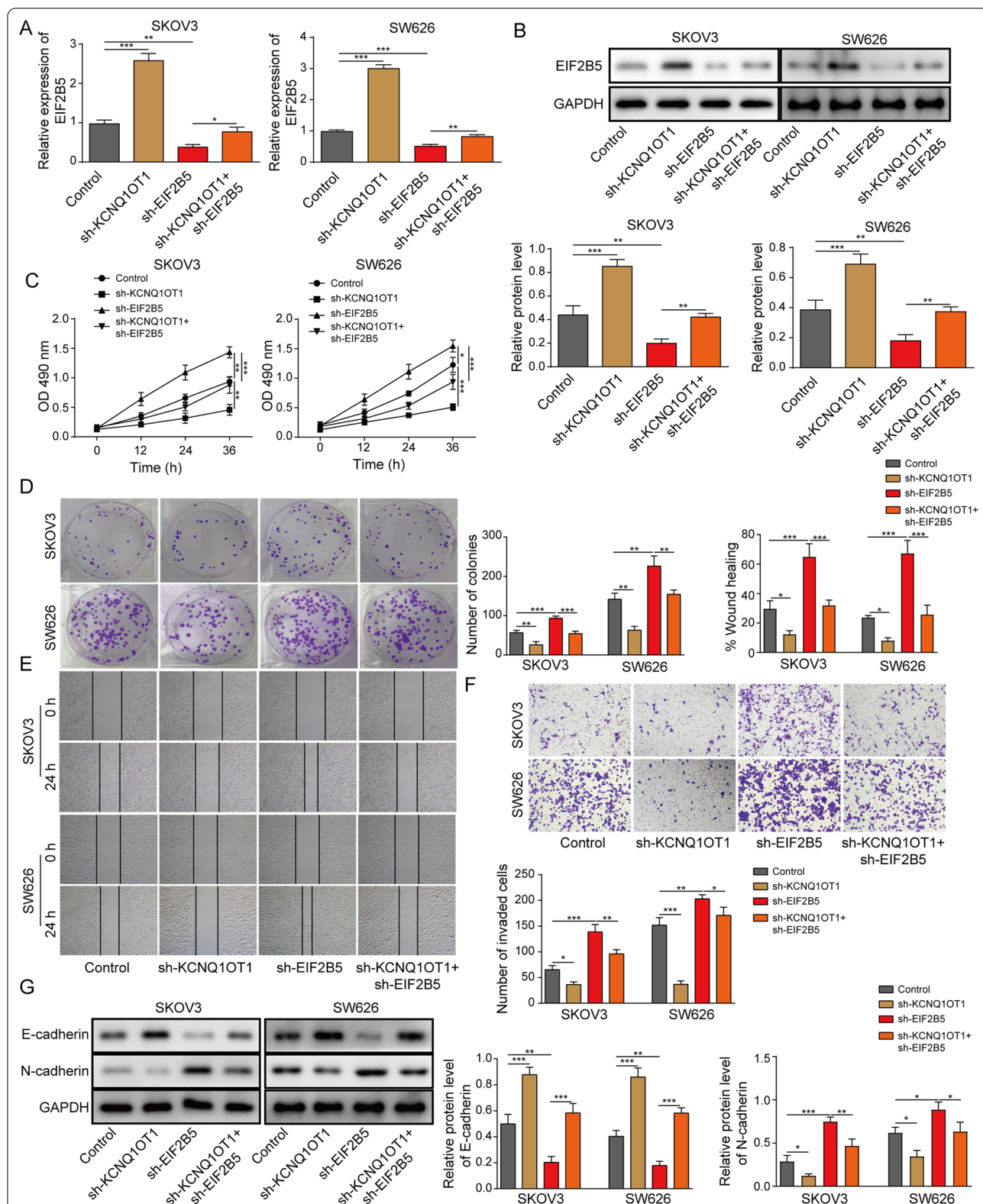


EIF2B5 was lowly expressed in OC tissues (Hou et al. 2020). In this work, we also identified the downregulation of EIF2B5 in OC tissues and cells. And we firstly found that silencing of KCNQ1OT1 promoted EIF2B5 expression in OC cells.

We then further explored the mechanism of KCNQ1OT1 affecting EIF2B5 expression in OC cells. Nuclear-cytoplasmic fractionation assay revealed the

main location of KCNQ1OT1 in nucleus of OC cells, suggesting that KCNQ1OT1 might participate in transcription regulation. LncRNAs were proved to alter DNA methylation, thereby impacting the expression of genes (Gao et al. 2019; Yu et al. 2019; Zheng et al. 2020). Hence, we wondered that KCNQ1OT1 might affect methylation of EIF2B promoter. Our experiments showed that KCNQ1OT1 depletion inhibited EIF2B5 methylation,





**Fig. 5** EIF2B5 inhibition largely relieved the inhibitory impact of KCNQ1OT1 depletion on the malignant behaviors of OC cells. SKOV3 and SW626 cells were transfected with Control (blank), sh-KCNQ1OT1, sh-EIF2B5 or sh-KCNQ1OT1 + sh-EIF2B5. **A, B** RT-qPCR analysis and Western blotting for the mRNA and protein levels of EIF2B5 in transfected cells. **C** MTT assay for the cell viability of transfected cells. **D** Colony formation assay for the cell clonogenic capacity of transfected cells. **E** Wound healing assay for the cell migration of transfected cells. **F** Transwell assay for the cell invasion of transfected cells. **G** Western blotting for abundance of E-cadherin and N-cadherin proteins in transfected cells. \**P* < 0.05

and KCNQ1OT1 could bind with DNA methyltransferases, DNMT1, DNMT3A and DNMT3B. To sum up, KCNQ1OT1 could recruit DNA methyltransferases into EIF2B5 promoter, thereby negatively regulating EIF2B5 expression. Functionally, interference of EIF2B5 almost rescued KCNQ1OT1 depletion-induced repressed OC cell proliferation and metastasis. Actually, partial silencing of KCNQ1OT1 inhibited OC progression and metastasis, suggesting its important role in OC development. However, there might be other downstream gene of KCNQ1OT1, which might be responsible for functional effect of KCNQ1OT1 on OC development.

## Conclusion

LncRNA KCNQ1OT1 could promote OC growth and metastasis by increasing EIF2B5 methylation, thus downregulating EIF2B5 expression. The present study highlighted a novel molecular mechanism for OC development and the potential application of KCNQ1OT1 for OC treatment.

## Abbreviations

ANOVA: Analysis of variance; BCA: Bicinchoninic acid; cDNA: Complementary; CASC9: Cancer susceptibility 9; ChIP: Chromatin immunoprecipitation; DMSO: Dimethyl sulfoxide solution; ECL: Enhanced chemiluminescence; EIF2B5: Eukaryotic translation initiation factor 2B subunit 5; EMT: Epithelial–mesenchymal transition; FBS: Fetal bovine serum; HOTAIR: Homeobox transcript antisense intergenic RNA; KCNQ1OT1: KCNQ1 opposite strand/antisense transcript 1; lncRNAs: Long non-coding RNAs; MS-PCR: Methylation-specific PCR; MTT: 3-(4,5-Dimethyl-2-thiazolyl)-2, 5-diphenyl-2-*H*-tetrazolium bromide; NEAT1: Nuclear enriched abundant transcript 1; OC: Ovarian cancer; PBS: Phosphate buffered saline; PVDF: Polyvinylidene difluoride; RIPA: Radio-Immunoprecipitation Assay; RIP: RNA immunoprecipitation; RPMI-1640: Roswell Park Memorial Institute 1640 medium; SD: Standard deviations; SDS-PAGE: Sodium dodecyl sulfonate-polyacrylamide gel electrophoresis.

## Acknowledgements

We would like to give our sincere gratitude to the reviewers for their constructive comments.

## Author contributions

SLH: Conceptualization; Funding acquisition; Writing-original draft; YLC: Data curation; Resources; QHC: Methodology; Formal analysis; QT: Investigation; Software; Visualization; SJY: Project administration; Supervision; Validation; Writing-review & editing. All authors have read and approved the final version of this manuscript to be published.

## Funding

This work was supported by Changsha Natural Science Foundation (No. kq2202424).

## Availability of data and materials

All data generated or analyzed during this study are included in this article. The datasets used and/or analyzed during the current study are available from the corresponding author on reasonable request.

## Declarations

### Ethics approval and consent to participate

Before tissue collection, we had got permission from the Ethics Committees of the Third Xiangya Hospital of Central South University and informed consent from all these 32 OC patients.

### Consent for publication

The informed consent was obtained from study participants.

### Competing interests

The authors declare that there is no conflict of interest.

### Author details

<sup>1</sup>Department of Gynaecology, The Third Xiangya Hospital of Central South University, No. 138, Tongzipo Road, Changsha 410013, Hunan Province, People's Republic of China. <sup>2</sup>Hunan University of Chinese Medicine, Changsha 410013, Hunan Province, People's Republic of China. <sup>3</sup>Surgical Department, The First Hospital of Hunan University of Chinese Medicine, Changsha 410017, Hunan Province, People's Republic of China. <sup>4</sup>Department of Medical Genetics, Maternal and Child Health Hospital of Hunan Province, Changsha 410013, Hunan Province, People's Republic of China.

Received: 22 April 2021 Accepted: 29 July 2022

Published online: 13 September 2022

## References

- Chen H, Yang S, Shao R. Long non-coding XIST raises methylation of TIMP-3 promoter to regulate collagen degradation in osteoarthritic chondrocytes after Tibial plateau fracture. *Arthritis Res Ther.* 2019;21(1):271.
- Chen Y, Zhang Z, Zhu D, Zhao W, Li F. Knockdown of KCNQ1OT1 attenuates cardiac hypertrophy through modulation of the miR-2054/AKT3 axis. *J Thorac Dis.* 2020a;12(9):4771–80.
- Chen C, Wei M, Wang C, Sun D, Liu P, Zhong X, Yu W. Long noncoding RNA KCNQ1OT1 promotes colorectal carcinogenesis by enhancing aerobic glycolysis via hexokinase-2. *Aging.* 2020b;12(12):11685–97.
- Ding P, Liang B, Shou J, Wang X. lncRNA KCNQ1OT1 promotes proliferation and invasion of glioma cells by targeting the miR-375/YAP pathway. *Int J Mol Med.* 2020;46(6):1983–92.
- Dong Z, Yang P, Qiu X, Liang S, Guan B, Yang H, Li F, Sun L, Liu H, Zou G, et al. KCNQ1OT1 facilitates progression of non-small-cell lung carcinoma via modulating miRNA-27b-3p/HSP90AA1 axis. *J Cell Physiol.* 2019;234(7):11304–14.
- Elsayed AM, Amero P, Salama SA, Abdelaziz AH, Lopez-Berestein G, Rodriguez-Aguayo C. Back to the future: rethinking the great potential of lncRNA(S) for optimizing chemotherapeutic response in ovarian cancer. *Cancers.* 2020;12(9):2406.
- Fang S, Gao H, Tong Y, Yang J, Tang R, Niu Y, Li M, Guo L. Long noncoding RNA-HOTAIR affects chemoresistance by regulating HOXA1 methylation in small cell lung cancer cells. *Lab Invest.* 2016;96(1):60–8.
- Fogli A, Boespflug-Tanguy O. The large spectrum of eIF2B-related diseases. *Biochem Soc Trans.* 2006;34(Pt 1):22–9.
- Fortner RT, Poole EM, Wentzensen NA, Trabert B, White E, Arslan AA, Patel AV, Setiawan VW, Visvanathan K, Weiderpass E, et al. Ovarian cancer risk factors by tumor aggressiveness: an analysis from the ovarian cancer cohort consortium. *Int J Cancer.* 2019;145(1):58–69.
- Gao B, Li S, Li G. Long noncoding RNA (lncRNA) small nucleolar RNA host gene 5 (SNHG5) regulates proliferation, differentiation, and apoptosis of K562 cells in chronic myeloid leukemia. *Med Sci Monit Int Med J Exp Clin Res.* 2019;25:6812–9.
- Gilbert L, Basso O, Sampalis J, Karp I, Martins C, Feng J, Piedimonte S, Quintal L, Ramanakumar AV, Takefman J, et al. Assessment of symptomatic women for early diagnosis of ovarian cancer: results from the prospective DoVE pilot project. *Lancet Oncol.* 2012;13(3):285–91.
- Hennessy BT, Coleman RL, Markman M. Ovarian cancer. *Lancet (london, England).* 2009;374(9698):1371–82.

- Hou L, Jiao Y, Li Y, Luo Z, Zhang X, Pan G, Zhao Y, Yang Z, He M. Low EIF2B5 expression predicts poor prognosis in ovarian cancer. *Medicine*. 2020;99(5): e18666.
- Jiao Y, Fu Z, Li Y, Meng L, Liu Y. High EIF2B5 mRNA expression and its prognostic significance in liver cancer: a study based on the TCGA and GEO database. *Cancer Manage Res*. 2018;10:6003–14.
- Liu H, Chen R, Kang F, Lai H, Wang Y. KCNQ1OT1 promotes ovarian cancer progression via modulating MIR-142-5p/CAPN10 axis. *Mol Genet Genomic Med*. 2020;8(2): e1077.
- Livak KJ, Schmittgen TD. Analysis of relative gene expression data using real-time quantitative PCR and the 2<sup>-</sup>(Delta Delta C(T)) method. *Methods (San Diego, Calif)*. 2001;25(4):402–8.
- Odunsi K. Immunotherapy in ovarian cancer. *Ann Oncol*. 2017;28(Suppl\_8):viii1–7.
- Palaniappan A, Ramar K, Ramalingam S. Computational identification of novel stage-specific biomarkers in colorectal cancer progression. *PLoS ONE*. 2016;11(5): e0156665.
- Peng L, Yuan X, Jiang B, Tang Z, Li GC. LncRNAs: key players and novel insights into cervical cancer. *Tumour Biol*. 2016;37(3):2779–88.
- Permeth-Wey J, Sellers TA. Epidemiology of ovarian cancer. *Methods Mol Biol (Clifton, NJ)*. 2009;472:413–37.
- Real SAS, Parveen F, Rehman AU, Khan MA, Deo SVS, Shukla NK, Husain SA. Aberrant promoter methylation of YAP gene and its subsequent down-regulation in Indian breast cancer patients. *BMC Cancer*. 2018;18(1):711.
- Schmidt S, Gay D, Uthe FW, Denk S, Paauwe M, Matthes N, Diefenbacher ME, Bryson S, Warrander FC, Erhard F, et al. A MYC-GCN2-eIF2a negative feedback loop limits protein synthesis to prevent MYC-dependent apoptosis in colorectal cancer. *Nat Cell Biol*. 2019;21(11):1413–24.
- Shen B, Li Y, Ye Q, Qin Y. YY1-mediated long non-coding RNA Kcnq1ot1 promotes the tumor progression by regulating PTEN via DNMT1 in triple negative breast cancer. *Cancer Gene Ther*. 2020;28:1099.
- Siegel RL, Miller KD, Jemal A. Cancer statistics, 2019. *CA Cancer J Clin*. 2019;69(1):7–34.
- Szajnik M, Czystowska-Kuźmicz M, Elishaev E, Whiteside TL. Biological markers of prognosis, response to therapy and outcome in ovarian carcinoma. *Expert Rev Mol Diagn*. 2016;16(8):811–26.
- Tan H, He Q, Gong G, Wang Y, Li J, Wang J, Zhu D, Wu X. miR-382 inhibits migration and invasion by targeting ROR1 through regulating EMT in ovarian cancer. *Int J Oncol*. 2016;48(1):181–90.
- Torre LA, Trabert B, DeSantis CE, Miller KD, Samimi G, Runowicz CD, Gaudet MM, Jemal A, Siegel RL. Ovarian cancer statistics, 2018. *CA Cancer J Clin*. 2018;68(4):284–96.
- Unterluggauer JJ, Prochazka K, Tomazic PV, Huber HJ, Seeboeck R, Fechter K, Steinbauer E, Gruber V, Feichtinger J, Pichler M, et al. Expression profile of translation initiation factor eIF2B5 in diffuse large B-cell lymphoma and its correlation to clinical outcome. *Blood Cancer J*. 2018;8(9):79.
- Wang J, Zhang H, Situ J, Li M, Sun H. KCNQ1OT1 aggravates cell proliferation and migration in bladder cancer through modulating miR-145-5p/PCBP2 axis. *Cancer Cell Int*. 2019a;19:325.
- Wang M, Wang Z, Zhu X, Guan S, Liu Z. LncRNA KCNQ1OT1 acting as a ceRNA for miR-4458 enhances osteosarcoma progression by regulating CCND2 expression. *In Vitro Cell Dev Biol Anim*. 2019b;55(9):694–702.
- Wang J, Wu F, Li Y, Pang L, Wang X, Kong G, Zhang T, Yu D. KCNQ1OT1 accelerates gastric cancer progression via miR-4319/DRAM2 axis. *Int J Immunopathol Pharmacol*. 2020;34:2058738420954598.
- Wortham NC, Proud CG. eIF2B: recent structural and functional insights into a key regulator of translation. *Biochem Soc Trans*. 2015;43(6):1234–40.
- Xu G, Zhu Y, Liu H, Liu Y, Zhang X. Long non-coding RNA KCNQ1OT1 promotes progression of hepatocellular carcinoma by miR-148a-3p/IGF1R axis. *Technol Cancer Res Treat*. 2020;19:1533033820980117.
- Yu JL, Li C, Che LH, Zhao YH, Guo YB. Downregulation of long noncoding RNA H19 rescues hippocampal neurons from apoptosis and oxidative stress by inhibiting IGF2 methylation in mice with streptozotocin-induced diabetes mellitus. *J Cell Physiol*. 2019;234(7):10655–70.
- Yu XH, Deng WY, Chen JJ, Xu XD, Liu XX, Chen L, Shi MW, Liu QX, Tao M, Ren K. LncRNA kcnq1ot1 promotes lipid accumulation and accelerates atherosclerosis via functioning as a ceRNA through the miR-452-3p/HDAC3/ABCA1 axis. *Cell Death Dis*. 2020;11(12):1043.
- Zhang L, Zou W. Inhibition of integrin  $\beta 1$  decreases the malignancy of ovarian cancer cells and potentiates anticancer therapy via the FAK/STAT1 signaling pathway. *Mol Med Rep*. 2015;12(6):7869–76.
- Zheng XY, Lei BX, Lin YY, Sui MH, Zhang ML, Zhuang ZQ, Dong JT, Jin DM, Yan TB. Long noncoding RNA MEG3 silencing protects against hypoxia-induced pheochromocytoma-12 cell injury through inhibition of TIMP2 promoter methylation. *J Cell Physiol*. 2020;235(2):1649–62.
- Zhong Y, Gao D, He S, Shuai C, Peng S. Dysregulated expression of long noncoding RNAs in ovarian cancer. *Int J Gynecol Cancer*. 2016;26(9):1564–70.

## Publisher's Note

Springer Nature remains neutral with regard to jurisdictional claims in published maps and institutional affiliations.

Ready to submit your research? Choose BMC and benefit from:

- fast, convenient online submission
- thorough peer review by experienced researchers in your field
- rapid publication on acceptance
- support for research data, including large and complex data types
- gold Open Access which fosters wider collaboration and increased citations
- maximum visibility for your research: over 100M website views per year

At BMC, research is always in progress.

Learn more [biomedcentral.com/submissions](https://biomedcentral.com/submissions)

