

Review paper

## Insights into neurosarcoidosis: an imaging perspective

Soumya Cicilet<sup>A,E,F#</sup>, Shreyas Reddy K<sup>A,B,C,D,E,F#</sup>, Meghana Kancharla<sup>A,E,F</sup>

St. John's Medical College Hospital, Bengaluru, Karnataka, India

#These authors contributed equally to this work.

### Abstract

Neurosarcoidosis is a complex and multifaceted inflammatory disorder affecting the nervous system. The disease, characterized by non-caseating granulomas, primarily involves the central and peripheral nervous systems. Neurological manifestations vary widely and can include cranial nerve palsies, meningeal involvement, parenchymal lesions, hydrocephalus, and more. Diagnosis remains challenging due to the lack of specific imaging features, necessitating a combination of clinical evaluation, cerebrospinal fluid analysis, imaging studies, and sometimes tissue biopsy. This review article underscores the importance of the identification of various imaging features to mitigate the mortality and morbidity associated with neurosarcoidosis.

**Key words:** MRI, neurosarcoidosis, CNS sarcoidosis, dural thickening, hypothalamo-pituitary axis, cranial nerve palsy.

### Introduction

Sarcoidosis is an idiopathic, multisystemic inflammatory disease characterized by non-caseating granulomas. Although it can affect any organ system, it predominantly involves the lymph nodes, lungs, skin, and eyes [1].

Cell-mediated, granulomatous inflammation remains the pathological hallmark, but a thorough understanding of the pathogenesis remains unclear [2].

While there is no unanimous agreement on whether sarcoidosis is classified as an autoimmune disease, there is a growing body of evidence suggesting that certain forms of sarcoidosis might involve autoimmune factors. Presently, our comprehension of the development of sarcoidosis is predominantly based on research into pulmonary sarcoidosis. The extent to which these findings apply to neurosarcoidosis, and whether the immune responses in neurosarcoidosis deviate from those seen in sarcoidosis affecting other bodily systems, are subjects undergoing active research [1,3].

Neurosarcoidosis usually affects women more than men, usually in middle age. The prevalence widely varies, with the highest reported incidence among Scandinavians and African Americans [1].

Neurological involvement occurs in about 5-10% of sarcoidosis. In about 30-70% of the cases, the presentation might be neurological; however, at the time of initial evaluation, the majority of individuals will have an extraneural disease. It can involve both the central nervous system (CNS) and the peripheral nervous system (PNS). Of the many possible manifestations of neurosarcoidosis, cranial nerve palsy is the most prevalent form, followed by meninges, ventricles, hypothalamo-pituitary axis (HPA), spinal cord, brain stem, and cerebellum [4,5]. Although rare, isolated neurosarcoidosis has also been reported. About 31% of cases have the systemic disease at the time of presentation, with 84% of cases eventually developing systemic manifestations [6].

Elevated angiotensin-converting enzyme (ACE), pleocytosis, IgG index, increased protein, and the presence of oligoclonal bands can all be identified in cerebrospinal

### Correspondence address:

Shreyas Reddy K., St. John's Medical College Hospital, Bengaluru, Karnataka, India, e-mail: [Drshreyasreddy111295@gmail.com](mailto:Drshreyasreddy111295@gmail.com)

### Authors' contribution:

A Study design · B Data collection · C Statistical analysis · D Data interpretation · E Manuscript preparation · F Literature search · G Funds collection

fluid (CSF) analysis. Elevated serum ACE levels, hypercalcaemia, and elevated erythrocyte sedimentation rate could suggest sarcoidosis. Laboratory workup is often nonspecific and may only be used as an adjunct marker [7].

On imaging, neurosarcoidosis mimics many infectious, neoplastic, demyelinating, and inflammatory diseases and hence can be a difficult definitive diagnosis to make [4,7,8].

Positron emission tomography (PET)/computed tomography (CT) in neurosarcoidosis is primarily used to assess systemic sarcoidosis, determine suitable tissue biopsy sites, and assess response to treatment. The normal uptake of fluorodeoxyglucose (FDG) by brain parenchyma often impairs the assessment of neurological involvement [7,9].

Performing a neural tissue biopsy is infrequent due to the associated risks, which can lead to permanent neurological impairments. It is essential to prioritize the exploration of alternative targets such as endobronchial tissue or lymph nodes for biopsy. In all cases, obtaining tissue cultures is vital because conventional stains for detecting organisms like mycobacteria and fungi might not be dependable [3,4]. Nonetheless, when confronted with rapidly progressing and unconventional symptoms that cause significant neurological deterioration, the situation warrants a neural biopsy. Another pitfall that might arise is the histological identification of non-specific chronic inflammation, especially because patients within this subgroup are often initiated on high-dose steroids [7].

To improve the diagnosis and the management of patients with suspected neurosarcoidosis, the 2018 Neurosarcoidosis Consortium Consensus Group (NCCC) [10] recently recommended new diagnostic criteria. Based on the clinical features and histopathology, the diagnosis of neurosarcoidosis can be classified into the following:

- possible – typical clinical and radiological features without histopathological diagnosis,
- probable – histopathological confirmation of a systemic disease,
- definitive – central nervous system biopsy consistent with sarcoidosis.

Peripheral nervous system involvement is also considered a part of neurosarcoidosis [10].

The diagnostic criteria for probable neurosarcoidosis, as outlined by the 2018 NCCC, contrast with those presented by Zajicek *et al.* [11]. In the latter, meeting the criteria involves the presence of oligoclonal bands, elevated levels of protein and/or cells in cerebrospinal fluid, indicators of systemic sarcoidosis such as histology, Kviem's test, and serum ACE, along with 2 imaging markers (such as chest imaging or gallium scan), and the exclusion of other potential diagnoses [11].

Patients falling into the category of “possible neurosarcoidosis” should be approached with caution because more than half of them received alternate diagnoses on neural biopsy in a recent study [7].

## Clinical presentation

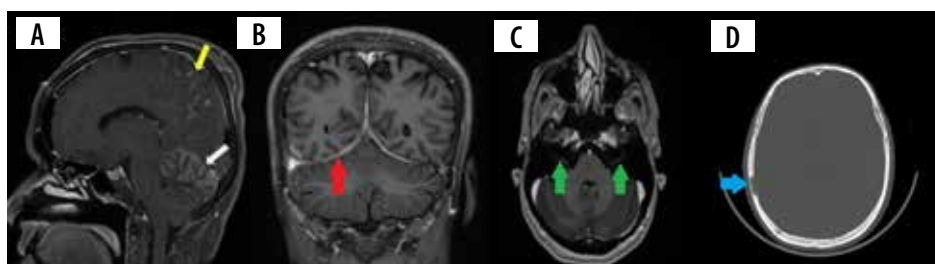
Symptoms of neurosarcoidosis are often non-specific and depend on the site of involvement. Facial nerve palsy and vision loss are the most common presentations, followed by headache, seizures, weakness, paraesthesia, and meningeal signs. Additionally, myelopathy and polyneuropathy can be found [6,12]. Involvement of the HPA may lead to symptoms of diabetes insipidus (DI) [12]. Rarely, it can present acutely with stroke or haemorrhage [13].

## Imaging findings

### Meningeal involvement

Meningeal inflammation is one of the most common manifestations of neurosarcoidosis, occurring in 16–69% of the patients. Leptomeningeal involvement is more common than pachymeningitis [14].

Leptomeningeal involvement occurs in about 40% of the cases, appearing as thickening and enhancement of the leptomeninges on post-contrast T1 images (Figure 1A). The thickening can either be nodular or diffuse [12]. A predilection for the basal meninges and perivascular spaces is seen, but it can occur anywhere across the neuroaxis [15]. These imaging appearances are practically indistinguishable from the leptomeningeal involvement seen in infections (tubercular and fungal), lymphoma, and primary angiitis of the CNS. Care must be exercised to differentiate lepto-



**Figure 1.** A) Sagittal T1 + C image shows nodular leptomeningeal enhancement in the parietal region (yellow arrow) and cerebellar hemispheres (white arrow). B) Coronal T1 + C image shows smoothly thickened tentorial leaflets bilaterally (red arrows). C) Axial T1 + C image shows enhancement of the meatal segments of bilateral seventh cranial nerves (green arrows). D) Axial CT of the skull shows a lytic lesion with no peripheral sclerosis involving the right parietal bone (blue arrow)

meningitis from normal blood vessels, haemorrhage, and melanin [8].

Pachymeningitis in neurosarcoidosis is predominantly found in the region of the central skull base involving the cavernous sinus, sphenoid wing, and clivus. The involvement can be single or multifocal, smooth or nodular, and can uncommonly demonstrate a dural tail (Figures 1B and 2B) [14]. Most of these lesions show homogenous contrast enhancement. They can often be T2 hypointense and can be confused with calcified meningiomas and metastases [12]. Larger nodular lesions can cause compressive cranial nerve palsies, parenchymal oedema, and subfalcine herniation. Because a wide range of neoplastic, infectious, and inflammatory disorders are included in the differential diagnosis of pachymeningitis, involvement of the leptomeninges, HPA, orbit, salivary glands, and brain parenchyma may suggest neurosarcoidosis. Nevertheless, tissue biopsy remains the gold standard for diagnosis in isolated pachymeningitis [14].

### Parenchymal involvement

Non-enhancing white matter lesions are reported to be the most common parenchymal abnormality, occurring in about 56% of patients. These lesions are predominantly seen in the periventricular and white matter regions. The effect of age and the presence of concomitant vascular comorbidities can be a potential confounder because differentiating these 2 entities with neurosarcoidosis is not possible on imaging [16].

The granulomas in neurosarcoidosis can manifest as single or multifocal. These lesions show diffuse or rim enhancement, which is considered to be the centripetal

involvement of the perivascular Virchow-Robin (VR) spaces. Often, they can demonstrate non-enhancing areas (Figure 3). Though necrosis and calcification are rare, they can be complicated by haemorrhage. Intra-axial masses appear isointense on T1 and hyperintense on T2. They can easily be mistaken for gliomas, lymphomas, haemorrhage, demyelinating disease, or metastasis, in which case leptomeningeal involvement favours neurosarcoidosis [12,16-18].

### Cranial nerve involvement

Cranial nerve involvement is one of the common manifestations of neurosarcoidosis, but it can be challenging to diagnose. The optic nerve and facial nerve are commonly involved, identified on imaging as nerve thickening and enhancement. Leptomeningeal disease is often present. Optic nerve involvement can mimic optic neuritis or gliomas [12,18]. In cases of sellar involvement, there is often an extension that affects the chiasm as well. Bilateral engagement is more frequent, and unfortunately this often leads to unfavourable visual outcomes [3,19]. Ophthalmic examination often reveals concomitant uveitis, scleritis, and orbital masses [19].

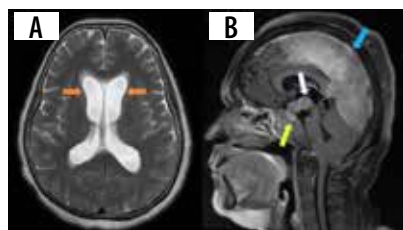
Orbital apex lesions can cause compressive neuropathy of multiple upper cranial nerves [20]. Neurosarcoidosis is one of the important causes of bilateral facial nerve palsy along with Lyme disease and Guillain-Barré syndrome (Figure 1C) [8]. Differentials to consider include perineural spread of tumour, carcinomatosis, and lymphoma [18].

### Hydrocephalus

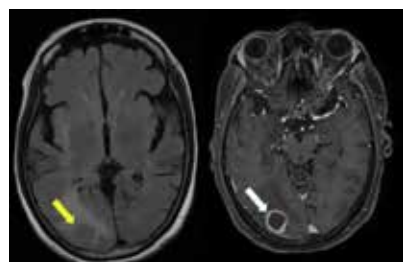
Hydrocephalus is another uncommon manifestation, occurring in about 4-38% of cases [16]. The communicating type is usually due to altered and decreased CSF resorption, and the obstructing type occurs due to adhesions from the leptomeningeal involvement. Magnetic resonance imaging (MRI) shows diffuse enlargement and ballooning of the ventricles with white matter changes and trans-ependymal effusion of CSF (Figure 2A). Contrast-enhanced MRI can show linear or patchy enhancement within the ventricles, with concomitant meningeal enhancement. A wide range of potential differential diagnoses should be considered, encompassing post-traumatic, infectious, inflammatory, and neoplastic causes. This is particularly important when there is no evident history suggestive of neurosarcoidosis [21]. FLAIR MRI can show differential intensity in unilateral hydrocephalus due to elevated protein concentration in the involved ventricle [12].

### Hypothalamo-pituitary axis involvement

Involvement of HPA can be seen in 9-17% of cases [7,22]. Leptomeningitis around the pituitary gland and hypothal-



**Figure 2.** A) Axial T2 image shows dilated lateral ventricles with mild transependymal ooze (orange arrows). B) Sagittal T1 + C image shows enhancing mass lesions involving the pituitary gland (yellow arrow) and infundibulum (white arrow). Dural thickening is also seen (blue arrow)



**Figure 3.** T2 /FLAIR hypointense lesion (yellow arrow) with perifocal oedema in the right occipital region. This lesion demonstrates post-contrast peripheral rim enhancement (white arrow)

lamus can involve the HPA, presenting with clinical symptoms of hypopituitarism and DI. On post-contrast T1 images, thickening and enhancement of the pituitary stalk and hypothalamus can be seen. Pseudo adenoma, pseudo abscess, and enhancing mass-like lesions (Figure 2B) can also be seen. Rarely, imaging can be normal. Most cases exhibit radiological regression, and in some instances complete normalization, following treatment. However, it is important to note that clinical outcomes might still be unfavourable despite these positive radiological changes. Imaging findings are often non-specific, with Langerhans cell histiocytosis, tuberculosis, lymphoma, and metastases presenting similarly [23].

### Cavernous sinus

With only a few cases reporting this illness in the literature, cavernous sinus involvement is extremely uncommon. Imaging findings include thickening and enhancement of the cavernous sinus. They can cause cavernous sinus syndrome with the involvement of III, IV, V, and VI nerves, leading to ophthalmoplegia and facial sensory loss. Differential diagnoses include meningioma, Tolosa-Hunt syndrome, and cavernous sinus thrombophlebitis [24-26].

### Vasculitis

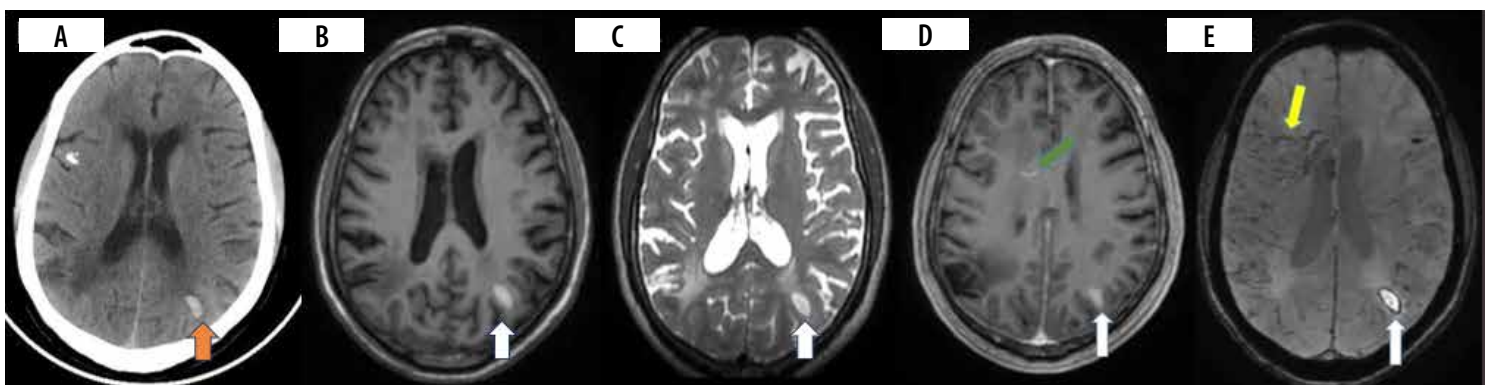
Vascular involvement in neurosarcoidosis can either be arterial or venous predominant. Small artery perforators are affected, but large vessel involvement is uncommon. Venous predominant vasculitis occurs in the form of phlebitis along the lateral and third ventricles, involving the paraventricular veins [27,28]. The pathophysiology of vascular involvement is believed to be complex, involving factors such as infiltration of vessel walls by granulomas and dysfunction of the endothelium [13].

Deep medullary vein engorgement (DMVE) is a recently recognised cerebrovascular manifestation, which increases the risk of microhaemorrhages. On suscepti-

bility sequences, the medullary veins are seen radially placed along the lateral ventricles (Figure 4E). The venous engorgement appears to be secondary to inflammation, causing elevated venous impedance and obliteration of the lumen. Patients with this condition are more prone to have hydrocephalus and exhibit involvement of perivascular spaces. However, this finding has not been linked with worse clinical outcomes [29]. Concomitant involvement of caudate veins is also seen in these patients. When present, dural sinus thrombosis can also cause engorgement of medullary veins [30]. The incidence of DMVE ranges from 33 to 38% [30,31]. DMVE is highly indicative of neurosarcoidosis, displaying an exceptional specificity [31].

Presentation can be acute in the form of stroke, sinus thrombosis, parenchymal or sub-arachnoid haemorrhage, though rare. In many of these cases, extra neural disease is evident [13]. Intracranial haemorrhage (ICH) appears to be subcortical and lobar predominant, although perivascular enhancement is commonly seen in basal ganglia, brain stem, and spine (Figure 4A-E) [13,27]. ICH can arise as a result of both arterial and venous involvement. Both imaging and pathological observations confirm this occurrence [30,31].

Small lacunar infarcts and microhaemorrhages are frequently seen in the perforator areas, including the brainstem and basal ganglia. Tortuosity of the involved perforators might hint towards the diagnosis of neurosarcoidosis. Although major vessel involvement can be observed, ischaemic complications are rare. Many these cases have adjacent leptomeningeal inflammation. The purpose of CT/MR angiography and vessel wall imaging is to diagnose stenosis/occlusion of major arteries and perforator vasculitis, which manifests as circumferential enhancement [13,30,33]. In a cohort of 13 patients who underwent vessel wall imaging, large vessel involvement was seen in 3/13 (23%) patients while perforator vessel involvement was seen in 6/13 (46%) patients. The presence of perivascular enhancement (Figure 4D) is noted to increase the incidence of cerebrovascular events [30]. Hutto *et al.* assessed



**Figure 4.** Patient presented with headache and vomiting. CT brain (A) was performed, which showed acute intraparenchymal haemorrhage in the left parietal region (orange arrow). MRI brain with contrast (B-E) was performed 12 days after and showed an area of late subacute haemorrhage in the left parietal region appearing T1/T2 hyperintense with a rim of susceptibility artefact and patchy enhancement (white arrow). Susceptibility-weighted image (E) shows engorgement of deep medullary veins (yellow arrow) with linear perivascular enhancement (D) (green arrow)

11 neurosarcoidosis patients who manifested ischaemic stroke, with 4 presenting with initial ischaemic stroke and 7 experiencing strokes during the course of the disease. Small vessel involvement of lenticulostriate and pontine perforators occurred in 10/11 (90.9%), with leptomeningeal enhancement being present in all these cases [34]. Another mechanism of stroke can be due to sarcoid cardiomyopathy, causing an embolic phenomenon [31].

### Spinal involvement

Spinal sarcoidosis involves a spectrum of intramedullary lesions, leptomeningitis, and pachymeningitis. It is estimated to be seen in around 1% of all sarcoidosis cases. Leptomeningeal disease appears to be the commonest, occurring in 61% of cases in which the spine is involved. Intramedullary lesions appear hypointense on T1, hyperintense on T2, and show post-contrast nodular enhancement (Figure 5). Long-standing cases can have cord atrophy. Predilection is seen for cervicothoracic cord. Cauda equina nerve roots and conus medullaris are frequently involved. Imaging findings are frequently nonspecific, making diagnosis challenging, especially in the absence of systemic sarcoidosis. Concurrent brain involvement can be seen in up to 70% of cases [32,33].

Several patterns of myelitis have been described on MRI, with longitudinally extensive transverse myelitis being the commonest, followed by short tumefactive myelitis, leptomeningeal enhancement, and anterior myelitis [34].

Sarcoid myelopathy can be easily confused with multiple sclerosis, transverse myelitis, fungal infection, glioma, or acute disseminated encephalomyelitis [12,17].

### Osseous involvement

Calvarial sarcoidosis is rare, but tubular bones of the hands and feet are commonly affected. Single or multiple focal lytic lesions can be seen involving cranial convexity, skull base, orbit, and vertebral bodies. They characteristically have no peripheral sclerosis (Figure 1D). Increased uptake can be seen in bone scintigraphy. MRI findings are nonspecific, showing T1 hypointensity, variable intensity on T2, and post-contrast enhancement. Lesions involving the skull base can present as cranial neuropathy. Since there are no defining imaging features in the absence of meningeal/parenchymal or extraneural involvement, multiple myeloma, metastases, and Langerhans cell histiocytosis can all be considered [35].

### Peripheral nervous system

PNS involvement in neurosarcoidosis is relatively less studied compared to CNS involvement. Though cranial nerve involvement is a common presentation, involvement of the peripheral nerves is rare, occurring in about 17% of cases [6]. A variety of disorders can be observed including



**Figure 5.** Sagittal T1 and T1 + C images show long segment T2 hyperintensity (yellow arrow) with patchy post-contrast enhancement (white arrow), consistent with longitudinally extensive transverse myelitis

Guillain-Barré syndrome, polyradiculopathy, and polyneuropathy with sensory, motor, and sensorimotor features. Among these, chronic symmetrical axonal sensory-motor polyneuropathy is the commonest form. Neurosarcoidosis is an important cause of mononeuritis multiplex [3]. Large-fibre neuropathy has a better prognosis than small-fibre neuropathy [36]. Nerve ultrasound depicts enlargement, either secondary to oedema or an increase in fascicular size. Characteristically these changes are found in the distal anatomic segments of the involved nerves [37].

In many cases, muscular sarcoid remains asymptomatic. Pain, atrophy, and weakness can be the presenting symptoms. Elevated creatine phosphokinase (CPK), nerve conduction studies, electromyography, nuclear imaging

**Table 1.** Differential diagnoses of neurosarcoidosis

Leptomeningeal involvement	Lymphomatous meningitis carcinomatous meningitis Infectious meningitis meningoangiomatosis
Dural involvement	Meningioma Metastasis Infectious meningitis
Intraparenchymal enhancing mass	Gliomas Metastasis Demyelinating disease Haemorrhage
Cranial nerve involvement	Infectious neuritis Perineural spread of tumour Lymphoma
Hypothalamo-pituitary axis involvement	Lymphoma Tuberculosis Langerhans cell histiocytosis Erdheim-Chester disease Metastases
Cavernous sinus involvement	Meningioma Tolosa-Hunt syndrome Ig G4 disease
Spinal intramedullary involvement	Demyelinating disease Acute disseminated encephalomyelitis (ADEM) Glioma
Osseous involvement	Multiple myeloma Metastases Langerhans cell histiocytosis

(gallium and FDG PET), and muscle biopsy all aid in the diagnosis. When performing a biopsy, a sample from both the muscle and the nerve can be obtained, as this allows investigation of both tissues and probably increases the diagnostic yield because up to 90% of nerve biopsies can have subclinical muscle involvement. Care should be exercised because steroid therapy can also result in muscular atrophy [3,36,38].

### Approach to a neurosarcoidosis patient

The Neurosarcoidosis Consortium Consensus Group (NCCC) recommends performing brain and spine MRI with and without gadolinium depending on the presentation. CSF analysis and routine workup are recommended in all cases to find corroboratory evidence and to rule out mimics. Evaluation of systemic disease should involve at least an ocular examination, high-resolution chest computed tomography, and a whole body FDG PET scan. An infectious disease workup is recommended as per the clinical history and presentation [10].

A comprehensive list of differential diagnoses of neurosarcoidosis is provided in Table 1.

### Conclusions

Neurosarcoidosis poses a diagnostic and clinical challenge, given its diverse and often nonspecific manifestations. This review article provides valuable insights into the disease, highlighting the significance of recognizing its various clinical presentations and interpreting imaging findings accurately. Despite the lack of definitive imaging markers, a comprehensive diagnostic approach involving clinical assessment, advanced imaging techniques, cerebrospinal fluid analysis, and sometimes tissue biopsy is crucial for accurate diagnosis. Clinicians and radiologists must collaborate to achieve early diagnosis and tailored management strategies. With a better understanding of the complexities of neurosarcoidosis, improvement in patient outcomes and quality of care for individuals affected by this intricate disorder can be achieved.

### Conflict of interest

The authors report no conflict of interest.

### References

- Grunewald J, Grutters JC, Arkema EV, et al. Sarcoidosis. *Nat Rev Dis Primer* 2019; 5: 45. doi: 10.1038/s41572-019-0096-x.
- Moller DR, Rybicki BA, Hamzeh NY, et al. Genetic, Immunologic, and environmental basis of sarcoidosis. *Ann Am Thorac Soc* 2017; 14 (Suppl 6): S429-436.
- Bradshaw MJ, Pawate S, Koth LL, et al. Neurosarcoidosis: pathophysiology, diagnosis, and treatment. *Neurol Neuroimmunol Neuroinflamm* 2021; 8: e1084. doi: 10.1212/NXI.0000000000001084.
- Culver D, Ribeiro Neto M, Moss B, Willis M. Neurosarcoidosis. *Semin Respir Crit Care Med* 2017; 38: 499-513.
- Leonhard SE, Fritz D, Eftimov F, et al. Neurosarcoidosis in a tertiary referral center: a cross-sectional cohort study. *Medicine (Baltimore)* 2016; 95: e3277. doi: 10.1097/MD.0000000000003277.
- Fritz D, van de Beek D, Brouwer MC. Clinical features, treatment and outcome in neurosarcoidosis: systematic review and meta-analysis. *BMC Neurol* 2016; 16: 220. doi: 10.1186/s12883-016-0741-x.
- Berntsson SG, Elmgren A, Gudjonsson O, et al. A comprehensive diagnostic approach in suspected neurosarcoidosis. *Sci Rep* 2023; 13: 6539. doi: 10.1038/s41598-023-33631-z.
- Shen J, Lackey E, Shah S. Neurosarcoidosis: diagnostic challenges and mimics a review. *Curr Allergy Asthma Rep* 2023; 23: 399-410.
- Piekarski E, Benali K, Rouzet F. Nuclear imaging in sarcoidosis. *Semin Nucl Med* 2018; 48: 246-260.
- Stern BJ, Royal W, Gelfand JM, et al. Definition and consensus diagnostic criteria for neurosarcoidosis: from the neurosarcoidosis consortium consensus group. *JAMA Neurol* 2018; 75: 1546-1553.
- Zajicek JP. Central nervous system sarcoidosis diagnosis and management. *QJM* 1999; 92: 103-117.
- Smith JK, Matheus MG, Castillo M. Imaging manifestations of neurosarcoidosis. *Am J Roentgenol* 2004; 182: 289-295.
- Bathla G, Watal P, Gupta S, et al. Cerebrovascular manifestations of neurosarcoidosis: an underrecognized aspect of the imaging spectrum. *Am J Neuroradiol* 2018; 39: 1194-1200.
- Chakales PA, Herman MC, Chien LC, Hutto SK. Pachymeningitis in biopsy-proven sarcoidosis: clinical course, radiographic findings, response to treatment, and long-term outcomes. *Neurol Neuroimmunol Neuroinflamm* 2022; 9: e200028. doi: 10.1212/NXI.0000000000200028.
- Nowak DA, Widenka DC. Neurosarcoidosis: a review of its intracranial manifestation. *J Neurol* 2001; 248: 363-372.
- Bathla G, Freeman CW, Moritani T, et al. Retrospective, dual-centre review of imaging findings in neurosarcoidosis at presentation: prevalence and imaging sub-types. *Clin Radiol* 2020; 75: 796.e1-796.e9.
- Ginat DT, Dhillon G, Almast J. Magnetic resonance imaging of neurosarcoidosis. *J Clin Imaging Sci* 2011; 1: 15. doi: 10.4103/2156-7514.76693.
- Bathla G, Singh AK, Policeni B, Agarwal A, Case B. Imaging of neurosarcoidosis: common, uncommon, and rare. *Clin Radiol* 2016; 71: 96-106.
- Lacomis D. Neurosarcoidosis. *Curr Neuropharmacol* 2011; 9: 429-436.
- Kidd DP. Neurosarcoidosis: clinical manifestations, investigation and treatment. *Pract Neurol* 2020; 20: 199-212.
- Ten Dam L, Van De Beek D, Brouwer MC. Clinical characteristics and outcome of hydrocephalus in neurosarcoidosis: a retrospective cohort study and review of the literature. *J Neurol* 2022; 269: 2727-2733.

22. Ramos-Casals M, Pérez-Alvarez R, Kostov B, et al. Clinical characterization and outcomes of 85 patients with neurosarcoidosis. *Sci Rep* 2021; 11: 13735. doi: 10.1038/s41598-021-92967-6.
23. Langrand C, Bihan H, Raverot G, et al. Hypothalamo-pituitary sarcoidosis: a multicenter study of 24 patients. *QJM* 2012; 105: 981-995.
24. Chang CS, Chen WL, Li CT, Wang PY. Cavernous sinus syndrome due to sarcoidosis: a case report. *Acta Neurol Taiwanica* 2009; 18: 37-41.
25. Kim DH, Cho WH, Cho KS, Cha SH. Solitary cavernous sinus neurosarcoidosis mimicking neurosyphilis. *J Korean Neurosurg Soc* 2014; 55: 61-63.
26. Zarei M, Anderson JR, Higgins JN, Manford MR. Cavernous sinus syndrome as the only manifestation of sarcoidosis. *J Postgrad Med* 2002; 48: 119-121.
27. Herring AB, Urich H. Sarcoidosis of the central nervous system. *J Neurol Sci* 1969; 9: 405-422.
28. Brown MM, Thompson AJ, Wedzicha JA, Swash M. Sarcoidosis presenting with stroke. *Stroke* 1989; 20: 400-405.
29. Zamora C, Hung SC, Tomingas C, et al. Engorgement of deep medullary veins in neurosarcoidosis: a common-yet-underrecognized cerebrovascular finding on SWI. *Am J Neuroradiol* 2018; 39: 2045-2050.
30. Bathla G, Abdel-Wahed L, Agarwal A, et al. Vascular involvement in neurosarcoidosis: early experiences from intracranial vessel wall imaging. *Neurol Neuroimmunol Neuroinflamm* 2021; 8: e1063. doi: 10.1212/NXI.0000000000001063.
31. Bathla G, Watal P, Gupta S, et al. Cerebrovascular manifestations in neurosarcoidosis: how common are they and does perivascular enhancement matter? *Clin Radiol* 2018; 73: 907.e15-907.e23.
32. Liberio R, Kramer E, Memon AB, et al. Relevance of medullary vein sign in neurosarcoidosis. *Neurol Int* 2022; 14: 638-647.
33. Raza N, Schreck KC. Neurosarcoidosis presenting with recurrent strokes: a case report and literature review. *Neurohospitalist* 2017; 7: 91-95.
34. Hutto SK, Kyle K, Balaban DT, et al. Ischemic stroke in neurosarcoidosis: a retrospective cohort analysis. *Mult Scler Relat Disord* 2022; 68: 104227. doi: 10.1016/j.msard.2022.104227.
35. Memon M, AlHazza M, Heena H. Stroke presenting as a complication of sarcoidosis in an otherwise asymptomatic patient. *Cureus* 2018; 10: e2362. doi: 10.7759/cureus.2362.
36. Soni N, Bathla G, Pillenahalli Maheshwarappa R. Imaging findings in spinal sarcoidosis: a report of 18 cases and review of the current literature. *Neuroradiol J* 2019; 32: 17-28.
37. Durel CA, Marignier R, Maucort-Boulch D, et al. Clinical features and prognostic factors of spinal cord sarcoidosis: a multicenter observational study of 20 BIOPSY-PROVEN patients. *J Neurol* 2016; 263: 981-990.
38. Murphy OC, Salazar-Camelo A, Jimenez JA, et al. Clinical and MRI phenotypes of sarcoidosis-associated myelopathy. *Neurol Neuroimmunol Neuroinflamm* 2020; 7: e722. doi: 10.1212/NXI.0000000000000722.
39. Robles LA, Matilla AF, Covarrubias MP. Sarcoidosis of the skull: a systematic review. *World Neurosurg* 2020; 139: 387-394.
40. Hebel R, Dubaniewicz-Wybieralska M, Dubaniewicz A. Overview of neurosarcoidosis: recent advances. *J Neurol* 2015; 262: 258-267.
41. Kerasnoudis A, Weitalla D, Gold R, et al. Sarcoid neuropathy: correlation of nerve ultrasound, electrophysiological and clinical findings. *J Neurol Sci* 2014; 347: 129-136.
42. Said G. Sarcoidosis of the peripheral nervous system. In: *Handbook of Clinical Neurology*. Elsevier; 2013, p. 485-495.