

Keywords: haematuria; bladder cancer; fast-track; lead times; patient-reported experiences costs

# Fast-track access to urologic care for patients with macroscopic haematuria is efficient and cost-effective: results from a prospective intervention study

Fredrik Liedberg<sup>\*,1,2</sup>, Ulf Gerdtham<sup>3</sup>, Katarina Gralén<sup>3</sup>, Sigurdur Gudjonsson<sup>1</sup>, Staffan Jahnson<sup>4</sup>, Irene Johansson<sup>1</sup>, Oskar Hagberg<sup>4,5</sup>, Staffan Larsson<sup>6</sup>, Anna-Karin Lind<sup>1</sup>, Annica Löfgren<sup>1</sup>, Jenny Wanegård<sup>1</sup>, Hanna Åberg<sup>4,5</sup> and Mef Nilbert<sup>4,5,7</sup>

<sup>1</sup>Department of Urology, Skåne University Hospital, Malmö, Sweden; <sup>2</sup>Department of Translational Medicine, Lund University, Malmö, Sweden; <sup>3</sup>The Swedish Institute for Health Economics, Lund University, Lund, Sweden; <sup>4</sup>Regional Cancer Centre South, Region Skåne, Lund, Sweden; <sup>5</sup>Divisions of Cancer Epidemiology and Oncology-Pathology, Institute of Clinical Sciences, Lund, Sweden; <sup>6</sup>Lundbergsgatan Primary Healthcare Centre, Malmö, Sweden and <sup>7</sup>Clinical Research Centre, Hvidovre University Hospital, Copenhagen University, Copenhagen, Denmark

**Background:** The delay between onset of macroscopic haematuria and diagnosis of bladder cancer is often long.

**Methods:** We evaluated timely diagnosis and health-care costs for patients with macroscopic haematuria given fast-track access to diagnostics. During a 15-month period, a telephone hotline for fast-track diagnostics was provided in nine Swedish municipalities for patients aged  $\geq 50$  years with macroscopic haematuria. The control group comprised 101 patients diagnosed with bladder cancer in the same catchment area with macroscopic haematuria who underwent regular diagnostic process.

**Results:** In all 275 patients who called 'the Red Phone' hotline were investigated, and 47 of them (17%) were diagnosed with cancer and 36 of those had bladder cancer. Median time from patient-reported haematuria to diagnosis was 29 (interquartile range (IQR) 14 – 104) days and 50 (IQR 27 – 165) days in the intervention and the control group, respectively ( $P=0.03$ ). The median health-care costs were lower in the intervention group (655 (IQR 655 – 655) EUR) than in the control group (767 (IQR 490 – 1096) EUR) ( $P=0.002$ ).

**Conclusions:** Direct access to urologic expertise and fast-track diagnostics is motivated for patients with macroscopic haematuria to reduce diagnostic intervals and lower health-care expenditures.

Bladder cancer is diagnosed in 120 000 individuals annually in Europe, and the incidence of this disease is increasing in many countries, including Sweden (<http://www.cancercentrum.se/globalassets/cancerdiagnoser/urinvagor/urinblase-och-urinrorscancer/rapport2014final.pdf>). Macroscopic haematuria is the isolated alarm symptom with the highest positive predictive value for cancer (Shapley *et al*, 2010), with cancer detection rates of up to

24 – 34% depending on gender and age distribution in the investigated populations (Sultana *et al*, 1996; Boman *et al*, 2001). The total delay from initial symptom to treatment is longer than for any other tumour type (Hansen *et al*, 2011), and there is substantial evidence that such delay decreases disease-specific survival (Hollenbeck *et al*, 2010; Bourgade *et al*, 2014), which is not always considered by health-care providers (Hamilton *et al*, 2015).

\*Correspondence: Dr F Liedberg; E-mail: fredrik.liedberg@med.lu.se

Received 28 March 2016; revised 22 July 2016; accepted 1 August 2016; published online 25 August 2016

© 2016 Cancer Research UK. All rights reserved 0007 – 0920/16

Owing to frequent recurrences and risk of progression of non-muscle-invasive disease and often a need for lifelong surveillance, the lifetime per-patient treatment costs are higher for bladder cancer than for all other forms of cancer (Santos *et al*, 2015). We therefore conducted a prospective study to investigate fast-track hotline (the 'Red Phone') to receiving specialised urologic care for patients with macroscopic haematuria evaluating lead times, patient-reported experiences (PREM), tumour characteristics, and health-care costs.

## MATERIALS AND METHODS

The primary catchment area of Skåne University Hospital has 625 000 inhabitants. Herein, the Red Phone hotline to a clinical nurse working at the Department of Urology was introduced for patients aged  $\geq 50$  years with macroscopic haematuria. The Red Phone was open 0800–1200 hours Monday to Friday. The study encompassed nine municipalities and covered the period 17 March 2014 to 17 June 2015. Exclusion criteria were a previous bladder cancer diagnosis with regular follow-ups, evaluation for haematuria within one year, or transurethral surgery within two months. The nurse consultant scheduled a patient for S-creatinine testing, voided urinary cytology, an appointment with a urologist for flexible cystoscopy with the same priority as other patients referred for macroscopic haematuria in the department, and CT urography within 2 weeks. Thus, the intervention gave access for patients with macroscopic haematuria that fulfilled the inclusion criteria to bypass regular referral systems.

The control group comprised all other patients in the same nine municipalities who had at least one episode of macroscopic haematuria and were diagnosed with bladder cancer during the study period at the Department of Urology, Skåne University Hospital after regular referral, that is, all patients outside the intervention group; these patients were retrospectively identified through the Swedish National Bladder Cancer Registry. The Swedish National Bladder Cancer Registry registers all patients with bladder cancer since 1997 including address, TNM-stage, size, number of tumours and primary treatment (<http://www.cancercentrum.se/globalassets/cancerdiagnoser/urinvargar/urinblase-och-urinrorscancer/rapport2014final.pdf>). Data on educational level were obtained from both PREM questionnaires ([http://www.cancercentrum.se/globalassets/vara-uppdrag/kunskapsstyrning/kvalitetsregister/sydost/patientenkater/prem\\_projektrapport\\_sydst-nov\\_2013.pdf](http://www.cancercentrum.se/globalassets/vara-uppdrag/kunskapsstyrning/kvalitetsregister/sydost/patientenkater/prem_projektrapport_sydst-nov_2013.pdf)) and telephone interviews. The Regional Ethical Review Board in Lund approved the study (Dnr 2013/457 and 2015/154).

Before initiating this project, information about the study was given directly to representatives from the primary care centres and was displayed on the home pages of the Department of Urology, Skåne University Hospital, and Region Skåne Primary Care. Furthermore, the general public got access to the 'Red Phone' hotline via the home page of the Department of Urology but chiefly through the national web-based health information-system platform ([www.1177.se](http://www.1177.se)). 1177 is a nationwide health-care guide with a 24-h open phone service where 1500 specially trained nurses are employed to provide general health advice and to guide patients to appropriate health care. General information as well as regional information, for example, the present study, is available on the internet-based information-system platform. During the study period, the 1177 phone service and website instructed all patients who fulfilled the inclusion criteria to call the 'Red Phone' hotline, diverting these patients away from their primary health-care centres.

To ascertain dates of haematuria, patients alive at the end of the study in the intervention and the control group were interviewed by a research nurse (AL); such dates were also retrieved from patient charts at all levels (primary care and hospital) and discrepancies between dates were solved after a consensus

discussion during the telephone interview. In the intervention group, date of haematuria was also ascertained when the patient called the Red Phone hotline. Furthermore, the following information was obtained from the Swedish National Bladder Cancer Registry; dates of referral to urologist, diagnosis, first visit to urologist, and transurethral resection; clinical tumour stage and grade; number of tumours (1, 2, 3, 4, 5, 6–10 or >10); largest tumour diameter (0–10, 11–30 or >30 mm). Date of diagnosis was defined as the earliest time point of tumour identification (at cystoscopy or CT urography).

To assess PREM, a validated PREM questionnaire ([http://www.cancercentrum.se/globalassets/vara-uppdrag/kunskapsstyrning/kvalitetsregister/sydost/patientenkater/prem\\_projektrapport\\_sydst-nov\\_2013.pdf](http://www.cancercentrum.se/globalassets/vara-uppdrag/kunskapsstyrning/kvalitetsregister/sydost/patientenkater/prem_projektrapport_sydst-nov_2013.pdf)) was distributed to patients in both groups with a bladder cancer diagnosis 3–12 months after diagnosis ( $n=36$  and 101). Responses could be provided online or in writing using a preaddressed envelope, and a reminder was sent after 2 weeks.

Data on resource use for outpatient care (including primary care), inpatient care, and medications related to bladder cancer over the period from macroscopic haematuria to diagnosis of bladder cancer were obtained from patient charts at primary health-care centres and hospitals, and through telephone interviews with patients. Unit costs of outpatient care, inpatient care, and medications were acquired from regional and national price lists in Sweden (<http://www.skane.se/upload/webbplatser/sodra%20regionvardsnanden/prislista/2015/helaprislistan2015.pdf>; <http://www.fass.se>; <http://webbutik.skl.se/bilder/artiklar/pdf/7164-395-7.pdf>; according to regional and national price lists for 2015). Also costs for patients' calling the 'Red Phone' was accounted for, however indirect costs were not estimated. When comparing costs between the control and intervention group, the analysis was restricted to bladder cancer due to the few numbers of other cancers diagnosed in the intervention group. Furthermore, due to lack of a validated control group for patients with negative haematuria investigations, cost calculations were not performed for patients without bladder cancer diagnosis.

Differences between the control and the intervention group were investigated using the Wilcoxon's rank-sum test, and  $P$  values  $< 0.05$  were considered significant. Fischer's exact test was used for categorical data.

## RESULTS

During the study period, 281 eligible individuals called the 'Red Phone'. Six declined further examinations, leaving 275 for evaluation (Figure 1). Of these, 123 (45%) had normal findings, 47 (17%) were diagnosed with a cancer (36 of those with bladder cancers), and 105 (38%) were diagnosed with benign conditions causing the haematuria (Table 1A). The control group comprised the 101 patients in the nine municipalities who were diagnosed with bladder cancer during the same period but not within our study. The median age (interquartile range (IQR)) was 72 (64–77) year in the intervention group and 74 (67–80) year in the control group ( $P=0.37$ ). Gender distribution differed: 17/36 (47%) females in the intervention group compared with 18/101 (18%) in the control group ( $P=0.001$ ).

Distribution of bladder cancer stages and grades was similar in the two groups (Table 1B), and this also applied when stage and grade were stratified into low-risk non-muscle-invasive bladder cancer (NMIBC; TaG1–TaG2), high-risk NMIBC, and muscle-invasive/metastatic disease ( $P=0.14$ ). The distribution of the number of tumours (stratified as 1, 2, 3, 4, 5, 6–10, and >10) was also similar in the two groups (data not shown), whereas tumour size differed, with significantly larger tumours in the control group ( $P=0.04$ ) (Table 1B). Median time from patient-reported

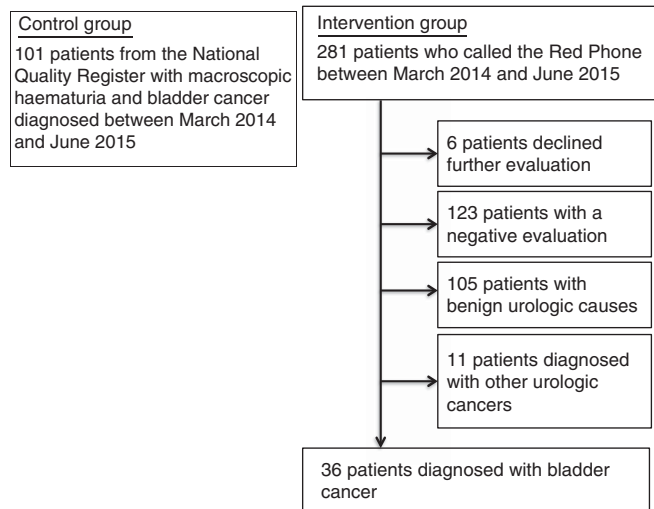


Figure 1. CONSORT diagram describing the findings in the intervention group and defining the control group.

**Table 1B. Distribution of age, gender, and tumour stage, grade, and size in the two patient groups**

	Control group (%) (n = 101)	Intervention group (%) (n = 36)
Median age (IQR), years	74 (67–80)	72 (64–77)
Gender ratio (% females)	18/101 (18)	17/36 (47) (P=0.001)
Tumour stage and grade		
TaG1	6 (7)	5 (14)
TaG2	29 (29)	14 (40)
TaG3	10 (10)	2 (6)
Cis	2 (2)	0 (0)
T1G2	5 (5)	2 (6)
T1G3	18 (18)	6 (17)
T2 – T4	18 (18)	5 (14)
anyT and N+ or M1	11 (11)	1 (3)
Tx	2 (2)	1 (3)
Tumour size, mm		
0 – 10	16 (20)	5 (15)
11 – 30	31 (38)	21 (64)
> 30	35 (43)	7 (21) (P=0.04)

Abbreviation: IQR = interquartile range. Information on the largest tumour diameter (in mm) was lacking for 19 patients in the control group and three in the intervention group. There were significantly larger tumours in the control group (P=0.04) and significantly more females in the intervention group (P=0.001).

**Table 1A. Findings of haematuria evaluation for the 275 patients who called the Red Phone hotline during the study period**

Findings of haematuria evaluation	n (% of 275 phone calls)
Cancer	47 (17)
Bladder cancer	36 (13)
Upper urinary tract urothelial carcinoma	4 (1)
Prostate cancer	4 (1)
Renal cell carcinoma	1 (0)
Gynaecological cancer	2 (1)
Benign findings	105 (38)
BPH	29 (11)
Stone disease	34 (12)
UTI	28 (10)
Urethral strictures, benign renal tumours and inflammatory conditions	14 (5)
Normal evaluation	123 (45)

Abbreviations: BPH = benign prostatic hyperplasia; UTI = urinary tract infection.

macroscopic haematuria to diagnosis was 29 (IQR 14 – 104) days in the intervention group but 50 (IQR 27 – 165) days in the control group (P = 0.03). Median time between date of referral to diagnosis was also significantly shorter in the intervention group (8 days (IQR 2 – 13)) than in the control group (19 days (IQR 5 – 32)) (P = 0.003), whereas the median number of days from macroscopic haematuria to referral was similar in the two groups (14 (IQR 3 – 98) and (33 (IQR 5 – 149), respectively) (P = 0.32). The other lead times from macroscopic haematuria are presented in Figure 2 and Table 2.

PREM data were obtained from 17/36 (47%) and 80/101 (79%) patients in the intervention and the control group, respectively (P = 0.002). Levels of education were comparable in the two groups (intervention vs control subjects): 11% and 24% primary school, 56% and 35% high school, and 33% and 41% university (P = 0.26). The 46 questions on the PREM-instrument were designed to investigate patient perceptions of dimensions related to: lead times, diagnosis, contact and coordination of health care, information, rehabilitation, and support. No differences were found between the groups for any of the 46 questions or the sum of responses for each dimension measured (data not shown).

The median total care cost per patient (including inpatient care, outpatient care, and medication) was 655 (IQR 655 – 655) EUR in the intervention group compared with 767 (IQR 490 – 1096) EUR

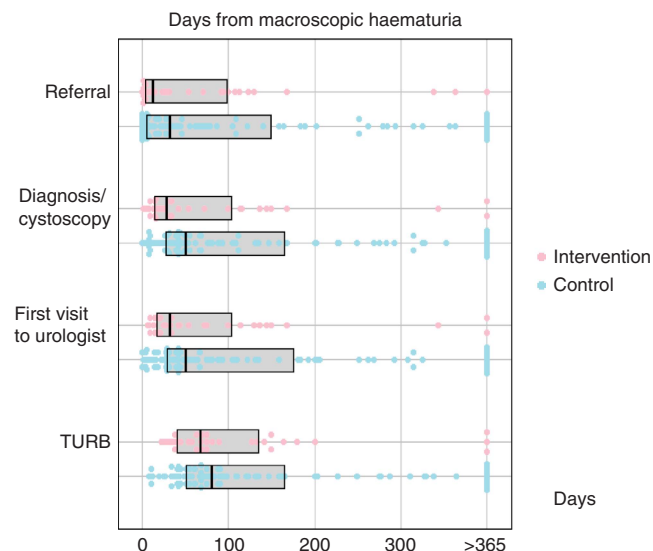


Figure 2. Days from macroscopic haematuria to referral, diagnosis/cystoscopy, first visit to urologist, and transurethral resection of the bladder tumour (TURB).

in the control group (P = 0.002; Table 3A). The higher median total care costs in the control group was driven by a higher median number of health-care contacts in the control group (three (IQR two – four)) than in the intervention group (two (IQR two – two)) (P = 0.01). The distribution of contacts with different health-care providers for the two groups is illustrated in Figure 3. The intervention group had only been in contact with the urology department and the red phone at the same department, with the exception of one patient who also had one visit to a primary health-care centre. The control group had been in contact with several different health-care providers, of which most frequent were primary health care (45% of the contacts), urology department (29% of the contacts) and emergency ward (13% of the contacts). The proportion of patients receiving the most frequent interventions in the intervention and control group is presented in Table 3B. Inpatient care was given only to subjects in the control group (17 patients), but these patients were few in

number and hence not reflected in the inpatient care median costs (Table 3A). Likewise, few patients received medication, and thus the median cost of medication was actually 0 SEK in both groups. Medical prescriptions were made twice in the intervention group and on 57 in the control group. The most commonly prescribed pharmaceuticals in the latter group were ciprofloxacin (12 prescriptions), pivmecillinam (11 prescriptions) and nitrofurantoin (7 prescriptions).

## DISCUSSION

The positive predictive value (PPV) for macroscopic haematuria and cancer was 17% (47/275) in the intervention group in the present study, but was 10.3% in an unselected population with macroscopic haematuria (Bruyninckx *et al*, 2003). The higher value noted in our investigation is probably related to the age criteria applied (only patients aged  $\geq 50$  year included), because the PPV increases with age (Schmidt-Hansen *et al*, 2015). In countries with a gatekeeper system where access to specialist care requires referral from primary care, a recent case-control study reported an estimated PPV for bladder cancer of 6.1% in patients aged  $\geq 60$  years (Shepard *et al*, 2012), indicating that community-based studies might have lower PPV. However, that study did not account for upper urinary tract cancer and depended on physicians correctly classifying macroscopic *vs* microscopic haematuria. In Sweden asymptomatic non-visible haematuria is no longer investigated for urologic cancer due to a low diagnostic yield (Holmång, 2016).

Reduced median diagnostic delay from macroscopic haematuria to established bladder cancer (29 days in the intervention group *vs*

50 days in the control group) was attributed to the accelerated investigation of macroscopic haematuria, as the median time from macroscopic haematuria to referral was similar in the intervention and control groups (14 and 33 days, respectively;  $P=0.32$ ). The diagnostic delay in both groups seems favourable, considering that a median of 134 days was recently found in Denmark (Hansen *et al*, 2011). However the Danish study also included patients diagnosed with bladder cancer based on with other symptoms in addition to macroscopic haematuria, which might have contributed to the longer lead times in that investigation, because urgency is associated with longer delay compared with haematuria (Månsson *et al*, 1993). Despite equal priority to patients in the control group and intervention group, the explanations for shorter diagnostic delay in the intervention group are due to multiple causes. For example, no time-loss for referral letters from the primary care physician to reach the department of urology has contributed to the shorter diagnostic delay in the intervention group. Higher priority for CT-urographies when booked through department of urology immediately when the patient called the 'Red Phone', as compared with regular referral with booking from either the primary care physician or when referral letter reached the department of urology. Also frequently patients in the control group were prescribed antibiotics by the primary health-care physician and first after re-evaluation referred for haematuria investigation might have contributed to shorter diagnostic delay in the intervention group, even though the difference between days from macroscopic haematuria to referral were not statistically different between the two groups (14 (IQR 3–98) and (33 (IQR 5–149), intervention and control group, respectively) ( $P=0.32$ ).

Increasing age (Liedberg *et al*, 2015) and female gender (Dobruch *et al*, 2016) are both associated with higher tumour stage at diagnosis. Our finding that tumours in the control group were significantly larger despite similar median age in the two groups and females being overrepresented in the intervention group (47 *vs* 18% in the control group) is difficult to explain (Table 1B). Perhaps this observation can be attributed to the longer diagnostic delay in the control group. The suggestion that larger tumours grow more rapidly than smaller (Gofrit *et al*, 2006), also supports the conclusion that the larger tumour size observed in our control group is biologically relevant and related to the longer

**Table 2.** Days from macroscopic haematuria to referral, diagnosis/cystoscopy, first visit to urologist, and transurethral resection of the bladder tumour (TURB) in the intervention and the control group

Days from macroscopic haematuria to:	Median (IQR)	P-value
<b>Referral</b>		
Intervention	14 (3–98)	0.32
Control	33 (5–149)	
<b>Diagnosis/cystoscopy</b>		
Intervention	29 (14–104)	0.03
Control	50 (27–165)	
<b>First visit to urologist</b>		
Intervention	33 (17–104)	0.09
Control	50 (28–175)	
<b>TURB</b>		
Intervention	68 (40–134)	0.19
Control	81 (51–165)	

Time from macroscopic haematuria to diagnosis was significantly shorter in the intervention group ( $P=0.03$ ).

**Table 3B.** Proportion of patients receiving the most frequent interventions by group

	Intervention group (n = 36)	Control group (n = 101)
Blood test creatinine	94% (n = 34)	52% (n = 53)
CT urography	94% (n = 34)	40% (n = 40)
Urine cytology	94% (n = 34)	23% (n = 23)
Cystoscopy	94% (n = 34)	94% (n = 95)
Urine test strip	0% (n = 0)	57% (n = 57)
Urine culture	0% (n = 0)	50% (n = 51)

**Table 3A.** Health-care costs (in EUR (€)) over the period from macroscopic haematuria to diagnosis

	Intervention group (n = 36)		Control group (n = 101)		P-value
	Median (IQR)	Mean (SD)	Median (IQR)	Mean (SD)	
Outpatient care (including interventions)	655 (655–655)	637 (111)	689 (428–877)	707 (340)	0.15
Inpatient care (including interventions)	0 (0–0)	0 (0)	0 (0–0)	601 (1 798)	0.009
Medication	0 (0–0)	0.5 (2)	0 (0–10)	8 (17)	0.0001
Total cost	655 (655–655)	637 (112)	767 (490–1096)	1316 (1 796)	0.002

One EUR is equivalent to 9.44 SEK.

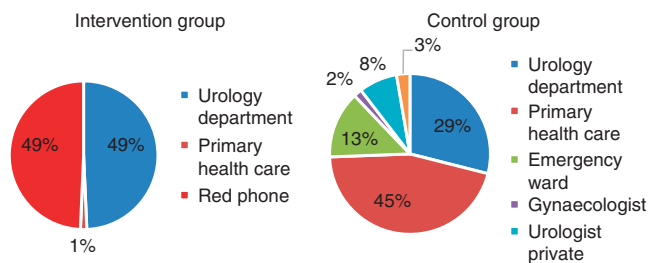


Figure 3. Distribution of contacts with different health-care providers by group.

diagnostic delay per se, considering that the difference was noted only for tumours with a maximum diameter of  $>30$  mm. However, the differences in tumour sizes observed may also have several other causes, that is, selection bias linked to more health-conscious individuals in the intervention group and other unknown differences in risk factors between the groups as, for example, smoking-status, although educational levels and age were comparable.

Females diagnosed with bladder cancer were overrepresented in the intervention group compared with the control group (47 vs 18%). The cause for this overrepresentation is unknown, though females have in several studies shown higher health awareness, potentially linked to experiences from screening programmes for breast cancer and cervical cancer. A longer diagnostic delay for women than men has previously been explained by impeded referral to a urologist (Garg *et al*, 2014), and a Swedish study also demonstrated that women more often than men were referred a second or a third time before being diagnosed with bladder cancer (26 vs 9%) (13). However, we did not find any gender differences between time from haematuria to diagnosis in the present study ( $P=0.47$ , data not shown). Thus it seems that direct access to urologic care (e.g., via a hotline like 'the Red Phone') for individuals with macroscopic haematuria is especially important for women as it may counteract gender-related disparity (Månsson *et al*, 1993; Garg *et al*, 2014). Direct urologic referral is indicated also for females, as well as for men, with culture positive urinary tract infection, as the risk for malignancy in a prospective fast-track haematuria study was equally high for culture negative and culture positive patients, (20 and 24%, respectively) (Vasdev and Thorpe, 2013).

Mass media public health campaigns such as 'Blood in Pee' launched by Public Health England (Hughes-Hallett *et al*, 2015) may represent an alternative or complementary strategy to accelerated haematuria evaluation, and intuitively would also reduce the longer diagnostic delay reported for women (Garg *et al*, 2014) and patients with urinary tract infections and haematuria that are later diagnosed with bladder cancer (Richards *et al*, 2015). There was no rise in bladder cancer diagnoses during the English campaign, but that does not exclude that such an intervention results in shorter lead times for bladder cancer diagnosis, because public awareness of the severity of macroscopic haematuria and the high risk of malignancy is probably limited. Haematuria public awareness campaigns can also be favoured by emphasising the preventive effect of smoking cessation, as indicated by a study showing that only one in four patients in a urologic outpatient unit recognised that smoking as a risk factor for bladder cancer (Bjurlin *et al*, 2012).

A similar type of expedited cancer diagnostics is now launched throughout the Nordic countries based on a Danish model which has been demonstrated to decrease lead times and improve timely access to cancer care (<http://skl.se/halsasjukvard/kunskapsstodvardochbehandling/cancervard/overenskommelse-cancervard.2049.html>). Initiatives such as the Red Phone aiming at standardised care pathways or fast-track access to urologic care may be particularly relevant in diagnoses where system delays have

a larger impact than patient delays. A median patient delay of 5 days has been reported in patients with macroscopic haematuria, whereas a median delay in care attributed to by doctor's (or health-care facilities) was 53 days (Månsson *et al*, 1993), which suggests that interventions should focus on the primary care delay in cancer referral (Mansell *et al*, 2011).

Health-care costs calculated for the period from macroscopic haematuria to bladder cancer diagnosis were lower in the intervention group (Table 3A), which was largely explained by a lower number of health-care contacts in the intervention group. In the intervention group only one patient visited a primary health-care centre. Thus, patients with macroscopic haematuria without other symptoms necessitating acute health-care contact, such as fever due to haemorrhagic cystitis or clot retention, can for the sake of time and costs be spared visits to other health-care givers. The higher costs in the control group may also be attributed to larger tumours in the control group, which is suggested by excess costs for inpatient care in the later group. Emergency presentation has been reported in 18.5% of bladder cancer patients in the United Kingdom between 2006 and 2010 (Abel *et al*, 2015). Thus, health-care costs in Sweden could probably be reduced if all individuals with macroscopic haematuria could immediately call 'the Red Phone' and undergo expeditious investigation in an outpatient setting, instead of consuming additional health-care contacts, inpatient or emergency care. Also, larger tumours are presumably more costly to treat due to more frequent need for re-resections, adjuvant instillations, and radical surgery, but these costs were not considered in the present analysis. Furthermore, the reduced need for a diagnostic cystoscopy in 17% of patients with obvious bladder cancer on a CT urography (Blick *et al*, 2012), or an even higher proportion with an optimally designed CT urography including a corticomedullary phase (Helenius *et al*, 2016), was not fully exploited in the current study to reduce costs as 94% of the patients in both groups were submitted to a cystoscopy (Table 3B).

The limitations of our investigation are related primarily to differences in selection mechanisms between the two study groups and the relatively limited number of patients included. Age and tumour stage distribution were comparable, but sex and tumour size differed, which may have influenced the results. Moreover, 17 patients in the control group were hospitalised due to macroscopic haematuria, and it is not known how many of those hospitalisations that could have been prevented by the fast-track access to urologic care that was as offered to the intervention group. Also, the present results are relevant for countries with diagnostic delays in cancer care, although the impact on health-care costs may vary between different care systems, thus external validation of the 'Red phone' hotline is needed. Furthermore, the proportion of patients who received information about the project from the home page of the Department of Urology, the web-based health information-system platform at [www.1177.se](http://www.1177.se) or by other means is not known. Also, potential costs for patients with macroscopic haematuria during the study period that never were investigated before the current study was closed that later will appear with a bladder cancer diagnosis, were not possible to take into account.

## CONCLUSIONS

Compared with the regular referral, the Red Phone hotline intervention for accelerated investigation of patients with macroscopic haematuria via direct access to urologic care decreased lead times, fewer health-care contacts and reduced health-care costs for patients diagnosed with bladder cancer.

## ACKNOWLEDGEMENTS

This research was supported by grants from The Swedish Cancer Society (CAN 2014/448) and Lund Medical Faculty (ALF).

## CONFLICT OF INTEREST

The authors declare no conflict of interest.

## REFERENCES

- Abel GA, Shelton J, Johnson S, Elliss-Brookes L, Lyratzopoulos G (2015) Cancer-specific variation in emergency presentation by sex, age and deprivation across 27 common and rarer cancers. *Br J Cancer* **112**(Suppl 1): S129–S136.
- Bjurlin MA, Cohn MR, Freeman VL, Lombardo LM, Hurley SD, Hollowell CM (2012) Ethnicity and smoking status are associated with awareness of smoking related genitourinary diseases. *J Urol* **188**: 724–728.
- Blick CG, Nazir SA, Mallett S, Turney BW, Onwu NN, Roberts IS, Crew JP, Cowan NC (2012) Evaluation of diagnostic strategies for bladder cancer using computed tomography (CT) urography, flexible cystoscopy and voided urine cytology: results for 778 patients from a hospital haematuria clinic. *BJU Int* **110**: 84–94.
- Boman H, Hedelin H, Holmäng S (2001) The results of routine evaluation of adult patients with haematuria analysed according to referral form information with 2-year follow-up. *Scand J Urol Nephrol* **35**: 497–501.
- Bourgade V, Drouin SJ, Yates DR, Parra J, Bitker MO, Cussenot O, Rouprêt M (2014) Impact of the length of time between diagnosis and surgical removal of urologic neoplasms on survival. *World J Urol* **32**: 475–479.
- Bruyninckx R, Buntinx F, Aertgeerts B, Van Casteren V (2003) The diagnostic value of macroscopic haematuria for the diagnosis of urological cancer in general practice. *Br J Gen Pract* **53**: 31–35.
- Dobrush J, Daneshmand S, Fisch M, Lotan Y, Noon AP, Resnick MJ, Shariat SF, Zlotta AR, Boorjian SA (2016) Gender and bladder cancer: a collaborative review of etiology, biology, and outcomes. *Eur Urol* **69**(2): 300–310.
- Garg T, Pinheiro LC, Atoria CL, Donat SM, Weissman JS, Herr HW, Elkin EB (2014) Gender disparities in hematuria evaluation and bladder cancer diagnosis: a population based analysis. *J Urol* **192**: 1072–1077.
- Gofrit ON, Pode D, Lazar A, Katz R, Shapiro A (2006) Watchful waiting policy in recurrent Ta G1 bladder tumors. *Eur Urol* **49**: 303–306.
- Hamilton W, Stapley S, Campbell C, Lyratzopoulos G, Rubin G, Neal D (2015) For which cancers might patients benefit most from expedited symptomatic diagnosis? Construction of a ranking order by a modified Delphi technique. *BMC Cancer* **15**: 820–828.
- Hansen RP, Vedsted P, Sokolowski I, Sondergaard J, Olesen F (2011) Time intervals from first symptom to treatment of cancer: a cohort study of 2,212 newly diagnosed cancer patients. *BMC Health Serv Res* **11**: 284–295.
- Helenius M, Dahlman P, Lonnemark M, Brekkan E, Wernroth L, Magnusson A (2016) Comparison of post contrast CT urography phases in bladder cancer detection. *Eur Radiol* **26**: 585–591.
- Hollenbeck BK, Dunn RL, Ye Z, Hollingsworth JM, Skolarus TA, Kim SP, Montie JE, Lee CT, Wood Jr DP, Miller DC (2010) Delays in diagnosis and bladder cancer mortality. *Cancer* **116**: 5235–5242.
- Holmäng S (2016) Mikroskopisk hematuri – ingen varningsklocka för cancer i urinvägarna. *Läkartidningen* **113**: 1–3.
- Hughes-Hallett A, Browne D, Mensah E, Vale J, Mayer E (2015) Assessing the impact of mass media public health campaigns. 'Be Clear on Cancer 'blood in pee': a case in point. *BJU Int* **117**: 570–575.
- Liedberg F, Hagberg O, Holmäng S, Hosseini Aliabad A, Jancke G, Ljungberg B, Malmström PU, Åberg H, Jahnson S (2015) Local recurrence and progression of non-muscle-invasive bladder cancer in Sweden: a population-based follow-up study. *Scand J Urol* **49**: 290–295.
- Mansell G, Shapley M, Jordan JL, Jordan K (2011) Interventions to reduce primary care delay in cancer referral. *Br J Gen Pract* **61**: e821–e835.
- Månsson A, Anderson H, Colleen S (1993) Time lag to diagnosis of bladder cancer-influence of psychosocial parameters and level of health-care provision. *Scand J Urol Nephrol* **27**: 363–369.
- Richards KA, Ham S, Cohn JA, Steinberg GD (2015) Urinary tract infection-like symptom is associated with worse bladder cancer outcomes in the Medicare population: Implications for sex disparities. *Int J Urol* **23**: 42–47.
- Santos F, Dragomir A, Zakaria AS, Kassouf W, Aprikian A (2015) Health-care services utilization and costs associated with radical cystectomy for bladder cancer: a descriptive population-based study in the province of Quebec, Canada. *BMC Health Serv Res* **15**: 308.
- Schmidt-Hansen M, Berendse S, Hamilton W (2015) The association between symptoms and bladder or renal tract cancer in primary care: a systematic review. *Br J Gen Pract* **65**: e769–e775.
- Shapley M, Mansell G, Jordan JL, Jordan KP. Positive predictive values of  $\geq 5\%$  in primary care for cancer: systematic review (2010) *Br J Gen Pract* **60**: e366–e377.
- Shepard EA, Stapley S, Neal RD, Rose P, Walter FM, Hamilton WT (2012) Clinical features of bladder cancer in primary care. *Br J Gen Pract* **62**: e598–e604.
- Sultana SR, Goodman CM, Byrne DJ, Baxby K (1996) Microscopic haematuria: urological investigation using a standard protocol. *Br J Urol* **78**: 691–696.
- Vasdev N, Thorpe AC (2013) Should the presence of culture positive urinary tract infection exclude patients from rapid evaluation hematuria protocols? *Urol Oncol* **31**: 909–913.

This work is published under the standard license to publish agreement. After 12 months the work will become freely available and the license terms will switch to a Creative Commons Attribution-NonCommercial-Share Alike 4.0 Unported License.