

RESEARCH

Open Access



Another lesson from beautiful monsters: the case of 'sex reversals' in the Ammonoidea and their significance

Camille Frau^{1*} and Pierre-Yves Boursicot²

Abstract

Background: Expression of sexual dimorphism is recognised in various fossil groups of molluscs such as the Ammonoidea, an extinct group of shelled cephalopods. During the Mesozoic, the best-documented sexual dimorphic examples are seen in the Jurassic superfamily Perisphinctoidea. It is usually expressed by distinct adult size and apertural modifications between the antidimorphs. Putative males (otherwise referred to as microconch) are small in size and develop lappets at the end of the shell while the females (macroconch) are larger and bear a simple peristome. Dubious cases are, however, known in that superfamily, which often relate to taxonomic biases or lack of diagnostic characters, and some others expose ontogenetic anomalies illustrated by 'sex reversals' in the shell morphology and ornamentation.

Results: The discovery of two specimens of the Callovian Aspidoceratidae *Peltoceras athleta* (Phillips), having both female and male features, questions the significance and causes of 'sex reversals' in the Ammonoidea. The two specimens have started with the macroconch ontogeny of *Peltoceras athleta* and show an apparent change toward maleness in the adult, as illustrated by their rounded whorl section, ribs retroversion, fading of the tubercles and lappets typical of the microconchs. Few other cases of female-to-male, as well as male-to-female 'sex reversal', are known in the fossil record, all belonging to the Jurassic Perisphinctoidea (families Perisphinctidae or Aspidoceratidae). Since all Jurassic Perisphinctoidea are strictly gonochoric, these 'sex reversals' are pathological in nature and are herein referred to as a new forma-type pathology: namely "forma hermaphrodita".

Conclusions: In the absence of any clear evidence of injury or parasitism, we hypothesize that such "forma hermaphrodita" individuals illustrate pathologic cases of intersexuality. Little is known about the ammonoid soft parts, and it is not possible to determine which internal sexual organs occur in specimens having both male and female external shell features. Abnormal feminisation and/or masculinisation also occur in modern cephalopods, the latter also grouping only gonochoric species. This phenomenon is similarly illustrated by a change in the adult body size and a mixing of both female and male structures. In that case, intersexuality is either advantageous in the population or caused sterility. The causes of intersexuality are not clearly established but environmental pollutants are evoked in modern cephalopods because they act as endocrine disrupters. 'Sex reversals' and/or non-functional reproductive abnormalities have also been caused by endocrine disrupters in various gonochoric gastropods species, but infestation, genetic abnormalities, temperature fluctuations or viruses are multiple causes, which can stimulate or inhibit

*Correspondence: camille_frau@hotmail.fr

¹ Groupement D'Intérêt Paléontologique, Science et Exposition, 35 Impasse lieutenant Daumas, 83100 Toulon, France

Full list of author information is available at the end of the article



neural-endocrinal activity by direct gonadal influence, and ultimately lead to feminisation or masculinisation in fishes, isopods, crustaceans, and gastropods as well. Regardless of whether “forma hermaphrodita” is due to an exogenic or endogenic cause, the record of intersex Perisphinctoidea in the Jurassic can be explained by the ready recognition of dimorphic pairs, and the easy collection of large and sufficiently preserved fossil palaeopopulations in which intersex specimens have statistically more chance to be found.

Keywords: Ammonoidea, Sexual dimorphism, Intersexuality, Pathology, Jurassic

Background

Dimorphism of sexual nature has been reported in various fossil groups of molluscs by analogy with recent species. De Blainville [1] first suggested that sexual dimorphism occurs in the Ammonoidea—an extinct group of shelled cephalopods—by comparison with the living nautiloid species *Nautilus pompilius* [2]. Nowadays, sexual dimorphism in ammonoids is widely accepted and its palaeobiological criteria are based on (i) a change in shell morphology, ornamentation, and aperture, (ii) similar early developmental stages, (iii & iv) same stratigraphic range and overlapping geographic occurrence, (v) common ancestors, (vi) similar numerical ratio between antidimorphs through time and throughout the evolution of the clade [3].

During the Mesozoic, the Jurassic Perisphinctoidea provide the best-known examples of sexual dimorphism (e.g. [4–17]). In this superfamily, the sexual dimorphism is most often expressed by distinct adult size and apertural modifications. Supposed males (their conchs are referred to as microconchs, [m]) are usually small in size and develop lappets at the end of the growth while the females (macroconchs, [M]) are distinctly larger and bear a simple peristome.

However, many cases of sexual dimorphism remain dubious due to taxonomic biases and lack of diagnostic features in the adult [18]. An increase of doubtful cases is observed in the Perisphinctoidea between the Callovian and the Kimmeridgian stages, as the ones listed by Brochwicz-Lewiński and Rózak [19]. These authors have illustrated apparent ‘sex reversals’ in the adult shell of various perisphinctoid species known to be dimorphic. The authors thus concluded that these specimens “represent a new type of dimorphism not encountered in other groups of ammonites and that [...] the hypothesis of the sexual dimorphism is not so universal as it was considered to be”.

The discovery of two specimens of the Callovian Aspidoceratidae *Peltoceras athleta* [20], having both male and female features, questions the significance of these ‘sex reversals’ in the Ammonoidea.

Material and methods

Origin of the material

The two specimens of *P. athleta*, labelled mbe.9305 and mbe.1401 were collected by one of us (P.-Y.B.) in the industrial area of Méron, near Montreuil-Bellay, Maine-et-Loire, France (Fig. 1A–B). There, Bonnot et al. [21] documented two condensed, oolitic limestone beds of late Callovian age. These beds yield abundant and well-preserved dimorphic-paired ammonite populations (see [21–23]). The studied material originates from the upper limestone bed dated to the *Peltoceras athleta* Horizon, which characterizes the upper *P. athleta* Zone (Fig. 1C).

Method

Shell parameters and ornamental features of the two specimens have been compared to the ontogeny and intraspecific variability of the dimorphic species *P. athleta* documented by [24, 25]. Two macroconch (e.g. *Athleta* Phillips and *Baylei* Prieser) and two microconch (e.g. *Annulosum* Quenstedt and *Pseudotorosum* Prieser) morphotypes of *P. athleta* are recognized by the same author. Typical representatives of the *Athleta*, *Annulosum* and *Pseudotorosum* morphotypes are herein illustrated for

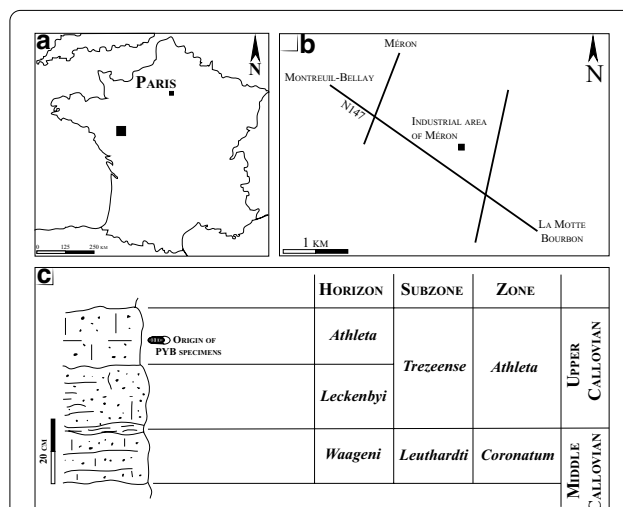
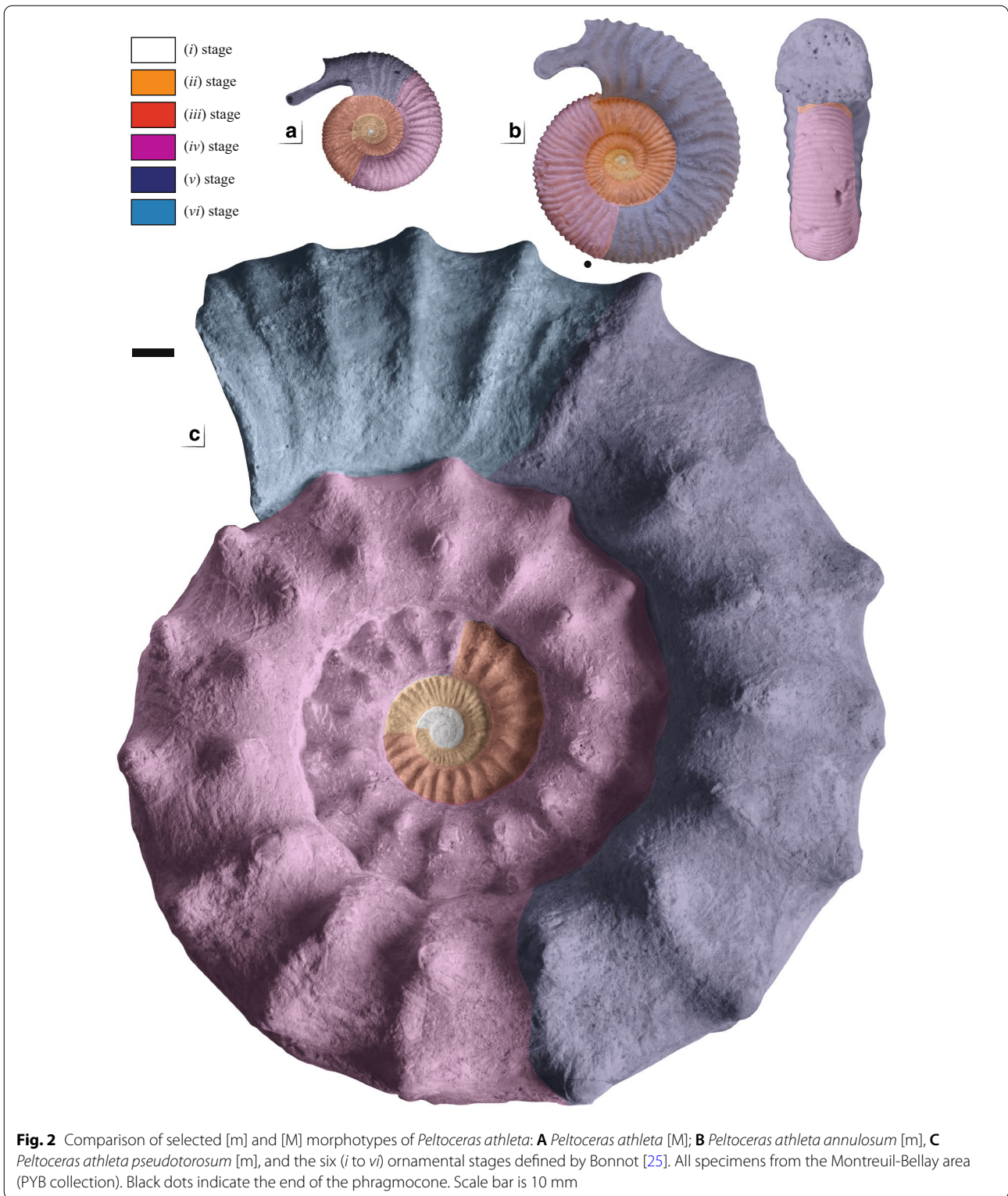


Fig. 1 Location of the Méron locality in the vicinity of Montreuil-Bellay (Maine et Loire, France), and its litho- and biostratigraphic scheme (modified from [21])

comparison (Fig. 2). (23, p. 267–272) provided a detailed biometric database of shell parameters of the four morphotypes based on juvenile and adult specimens from

references localities of France and Switzerland. The database contains standard measurements of the shell, given in millimetres and as percentages of total diameter. The



following abbreviations indicate: Dmax=maximum diameter; Uw=umbilical width; Wh=whorl height; Ww=whorl width and K=number of ribs per half a whorl. The ratios of morphological features (Uw/D, Wh/D, Wb/D and Wb/Wh) and rib density (K/D) to diameter are investigated and compared the dimensions of our specimens (Table 1). The coiling terminology follows that of Klug et al. [26].

According to (23, p. 272–273), six ornamental stages characterize the ontogeny of *P. athleta* macroconchs (Dmax ~ 240 mm):

- (i) Smooth initial whorls with a sub-circular whorl section.
- (ii) Approximated, prorsiradiate, bifurcate and single ribs that cross the venter.
- (iii) Ribs become radial and spaced.
- (iv) Appearance of two lateral tubercles; Whorl section become markedly depressed and trapezoidal.
- (v) Disappearance of intercalate ribs on the venter.
- (vi) Broad single ribs that cross the venter.

The microconchs (Dmax ~ 110 mm) possess the three first ontogenetic stages of the macroconchs but develop a more circular whorl section. In the microconchs, the fourth stage differs by rectiradiate ribs forming a slight chevron pattern on the venter while the fifth stage develops spaced, strong, rursiradiate, bifurcate ribs approaching an aperture with lappets. The sixth stage is lacking. These stages are herein illustrated in both macro-, and microconchs (see Fig. 2).

Results

Shell shape

The two studied specimens are illustrated on Fig. 3A and B, respectively. Both specimens mbe.9305 and mbe.1401 are characterized by a moderate size (62.3 < D < 66.6 mm). They share an extremely discoidal (Ww/D ~ 0.33), weakly depressed (Ww/Wh ~ 1.11), very evolute (U/Wh ~ 1.7) subophiocone coiling (Uw/D ~ 0.49). Specimen mbe.9305 is the most complete individual with almost four preserved whorls. Regarding their adult diameter, the two specimens fall in the peak of the normal distribution of the macroconch diameters (Fig. 4A). They are much larger than the *P. athleta annulosum* microconchs but fall

in the normal distribution of the *P. athleta pseudotorosum* diameters (Fig. 4B).

Shell parameters of the specimens are compared to the bivariate analysis of the four morphotypes of *P. athleta* provided by Bonnot [21]. The dimensional parameters growth of the shell (Wh, Ww and Uw as function of D— Fig. 5A–F) show homogeneous scatters around the mean curve (with R² still very high ± 0.9) in each case. The growth of those parameters is isometric and harmonic and corresponds to the relationship Y=bD. Regardless of the shell parameters, specimens mbe.9305 and mbe.1401 have greater affinities with the antidimorphs *P. athleta athleta* and *P. athleta pseudotorosum*. Only the whorl width index (Ww/D) of the two specimens deviates from that of the two microconch morphotypes, and better fits into the point cloud of the macroconchs (compare Figs. 5C and F).

Finally, the subophiocone coiling of specimens mbe.9305 and mbe.1401 compares well to that of the macroconchs, since the microconchs have dactilicone to ophiocone conch shapes, rarely subophiocone (Fig. 5G).

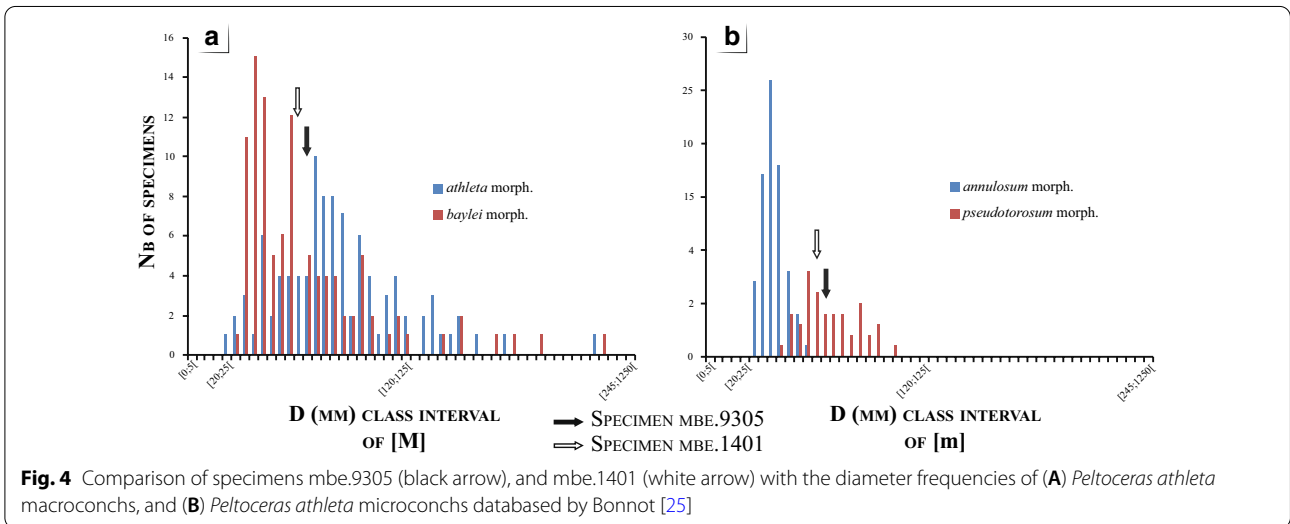
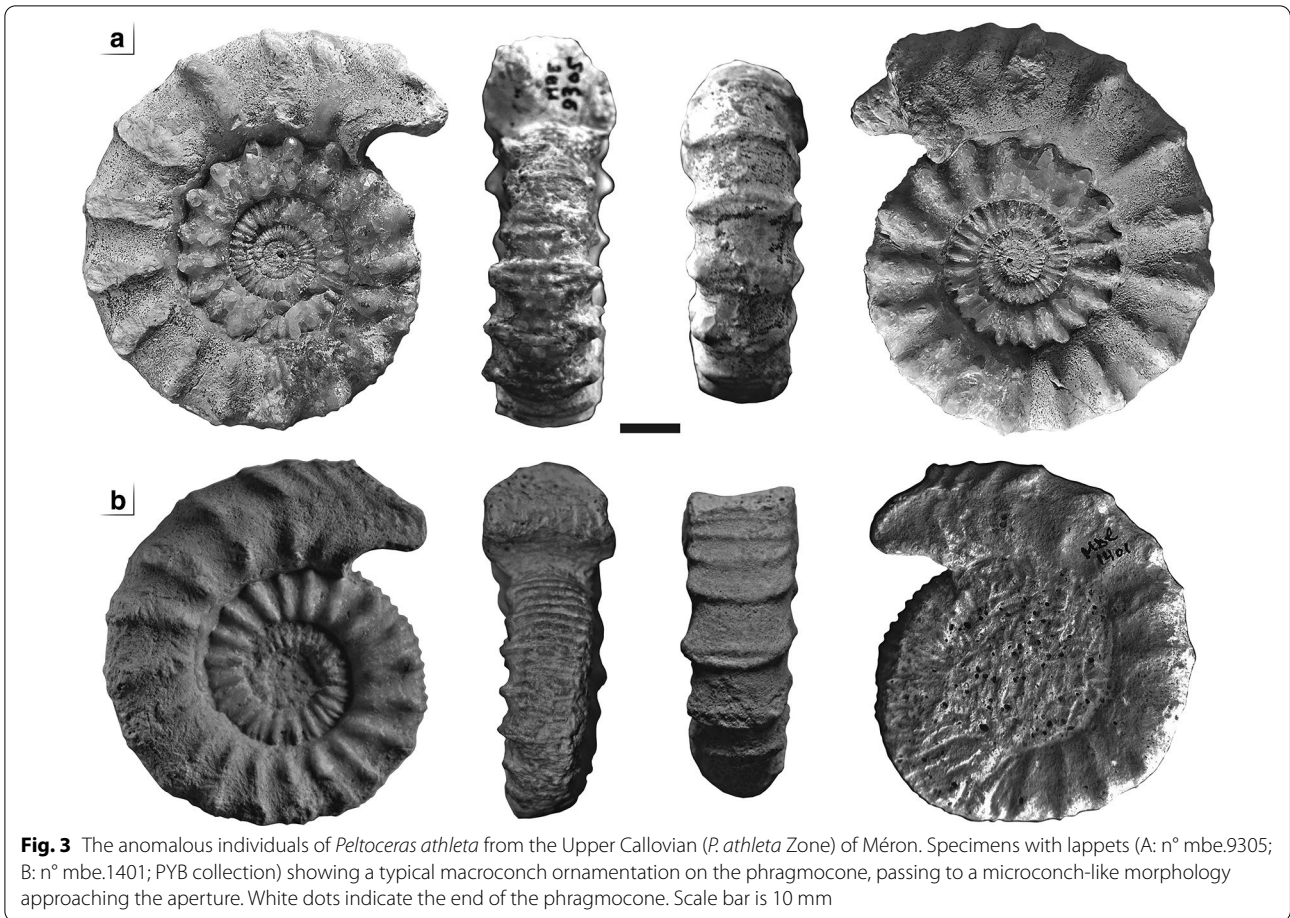
Ornamentation

The two sides of specimen mbe.9305 have a similar ornamentation and succession of ontogenetic stages (Fig. 6). This conclusion cannot be reached for specimen mbe.1401 due to the poor preservation of the right flank. No scar or pathological shell compensation is discernible except for the worn inner whorls. Comparison with the ornamental sequence of both macro-, and microconchs of *P. athleta* is as follows:

- The stage (i) is lacking in both specimens. Their ornamentation starts directly with the stage (ii), which occupies one whorl and a half in specimen mbe.9305. This stage is more anarchic in specimen mbe.1401 as illustrated by simple, bifurcate, polygyrate primary ribs, and irregular intercalatories not typical of that stage.
- The stage (iii) is present in the two specimens and occupies half of a whorl. Ribs are more robust and spaced in specimen mbe.1401. They start to develop slight thickenings at the future emplacement of the tubercles.

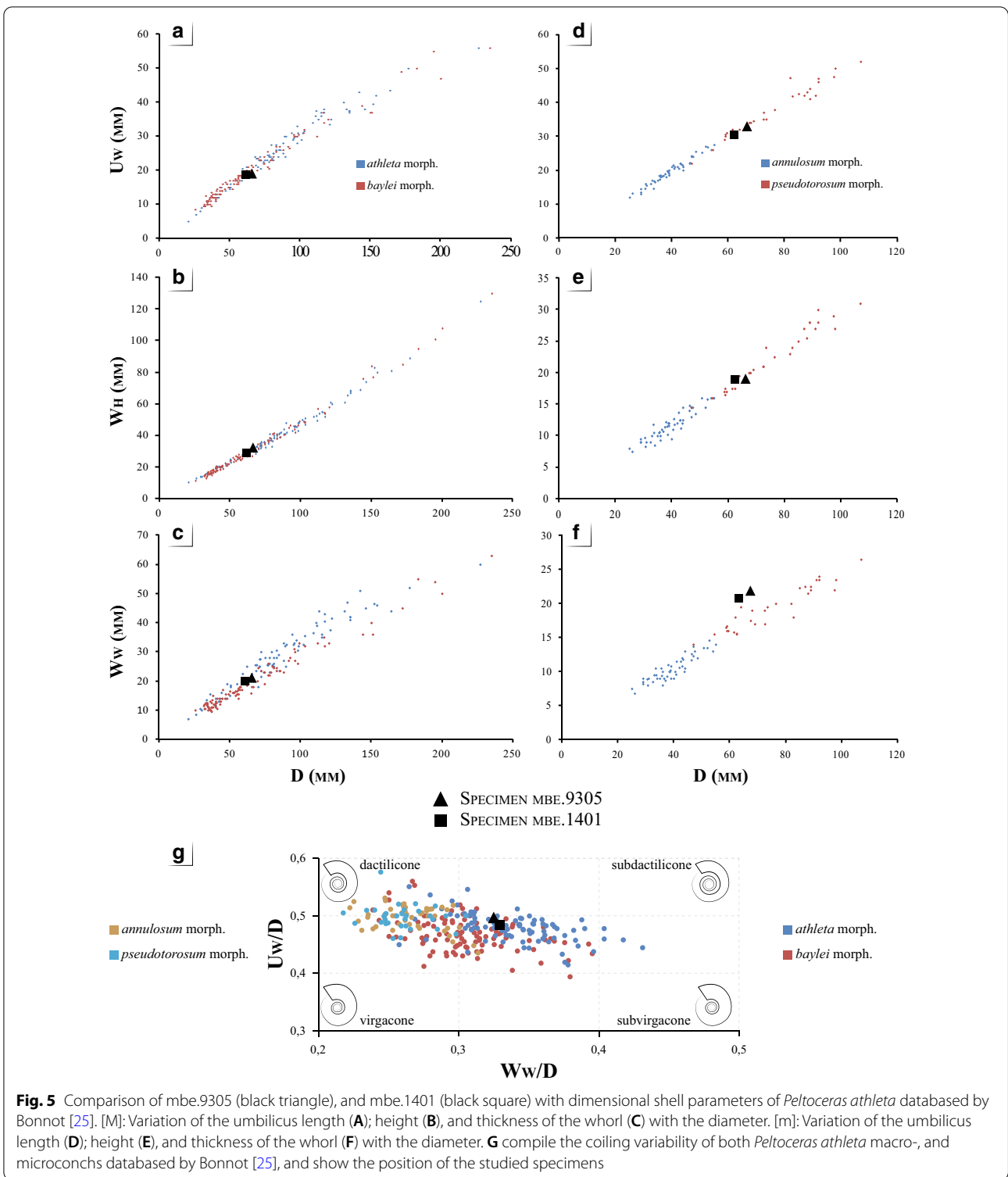
Table 1 Dimensions of the studied *P. athleta* individuals labelled mbe.9305 and mbe.1401 from Méron (PYB collection)

	D	Uw	Wh	Ww	K	Uw/D	Wh/D	Ww/D	Ww/Wh	U/Wh
mbe.9305	66.6	33	19	22	9	0.4954955	0.2852853	0.3243243	1.1368421	1.7368421
mbe.1401	62.3	30	18.9	21	9	0.4879615	0.3033708	0.3306581	1.0899471	1.6084656
Mean value	64.5	32	19	21	9	0.4917285	0.294328	0.3274912	1.1133946	1.6726539



– The stages (iv) and (v) are typical of *P. athleta* macroconchs and illustrated by strong bituberculate primary ribs, and the progressive disappearance

of intercalatories on the venter. These ontogenetic stages are much longer in specimen mbe.9305 than in the other one since it covers one whorl and a



half. First peri-umbilical and upper lateral tubercles of the stage (*iv*) occur at a diameter of 24.3 mm in specimen mbe.9305, and at 35.4 mm in the speci-

men mbe.1401. The boundary between the phragmocone and the body chamber is located at the upper part of the stage (*iv*) in both specimens. It is at $D \sim 43.2$ in specimen mbe.1401, and at $D \sim 49.4$

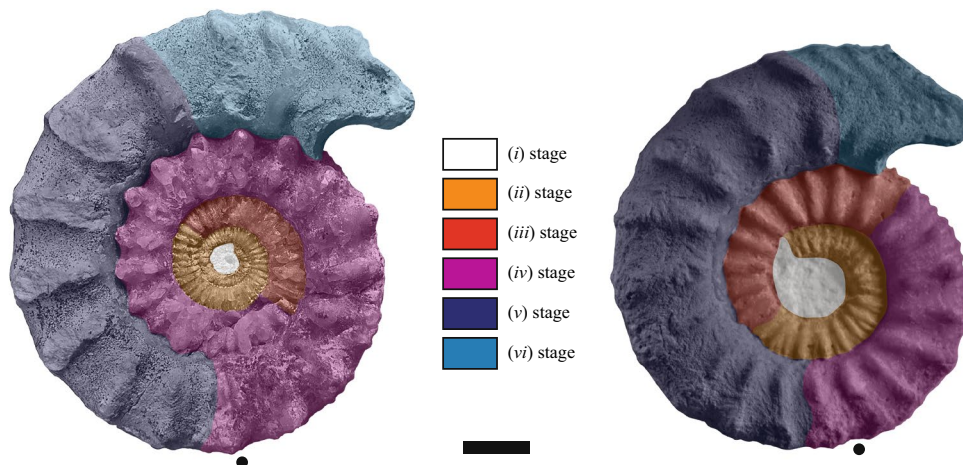


Fig. 6 Drawing of the six ornamental stages (*i* to *vi*) of *Peltoceras athleta* as defined by Bonnot [25] on specimens (A) mbe.9305, and (B): mbe.1401. Black dots indicate the end of the phragmocone. Scale bar is 10 mm

in specimen mbe.9305. The whorl section is compressed and trapezoidal.

- The stage (*vi*) is modified in both specimens compared to typical macroconchs. It develops approximated, strongly flexuous single or bifurcate ribs crossing the venter, followed by a slightly projected aperture with lappets typical of the microconchs. The section is markedly sub-rounded at the aperture of mbe.1401 and compares well to that of the *P. athleta* microconchs.

According to the criteria of Bonnot [25], such ornamental sequence conforms well to that of the *Peltoceras athleta baylei* macroconch morphotype by their long-ribbed stage (*ii*), late appearance of stage (*iv*) with reduced peri-umbilical tubercles, and persistence of stage (*v*) in the adult. They, however, develop a sub-rounded whorl section, strong rib retroversion, and a lappet at the end of the shell which are typical features of the *P. athleta pseudotorosum* microconchs. Regarding the number of primary ribs during the ontogenesis (Fig. 7A–B), our specimens fall in the variability of the two macroconch morphotypes. The low density of primary ribs on the body chamber excludes these specimens to the rib variability of the *P. athleta* microconchs.

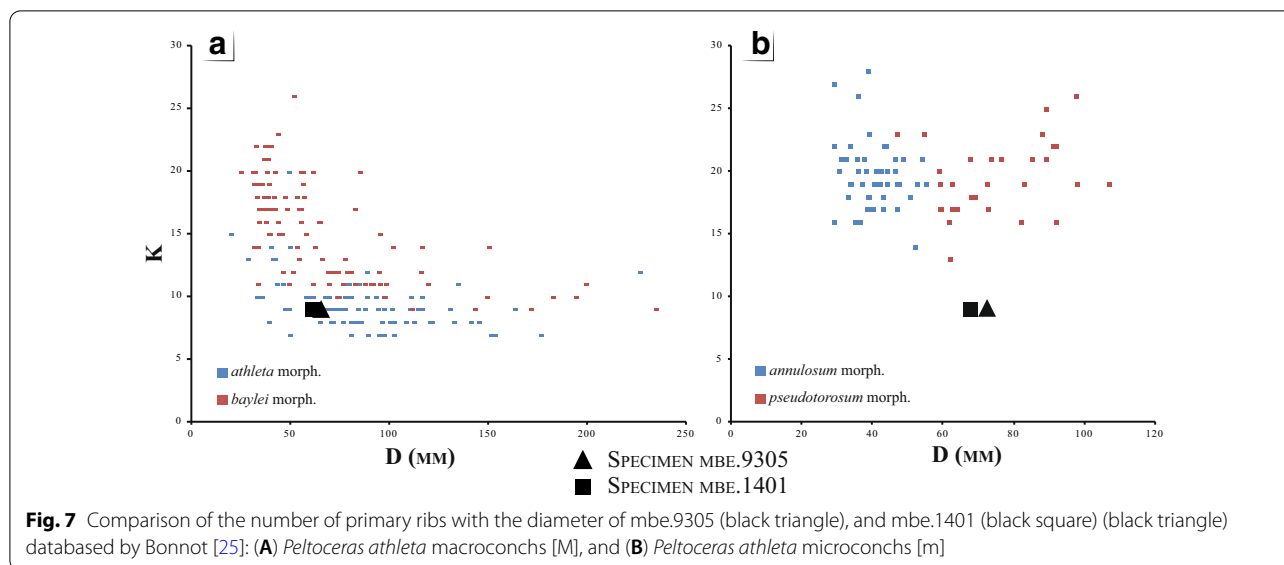
Discussion

'Sex reversals' in ammonoid shells and definition of a new forma-type pathology

The species *P. athleta* is widely identified as a dimorphic Aspidoceratidae, including large-sized macroconchs with six ornamental stages and a simple aperture *versus*

small-sized microconchs with lappets and modified/truncated ornamental sequence [25], and references therein). The individuals at our disposal start with a female ontogeny typical of the *P. athleta* macroconchs and show an apparent change toward maleness in the adult. The ornamental parameters of their phragmocones conform well to those of the *P. athleta baylei* macroconch morphotype, but the adult ornamental modifications better compare to that of the *P. athleta pseudotorosum* microconch morphotype (i.e., low density of primary ribs on the outer whorl, ribs retroversion, and fading of the tubercles). The deviation in the macroconch ornamentation also concerns the whorl section. It is typically depressed and trapezoidal during the bituberculate stage (*iv*) but becomes sub-rounded in the outer whorl; the latter being characteristic of the microconchs. There is no strong deviation regarding the dimensional parameters, except for the conch shape which is much more extremely discoidal than typical microconchs. As such, the expression of a 'sex reversal' seemingly affects both the ornamentation and the shell shape during the growth, and the general dimensional parameters to a lesser extent.

A similar 'sex reversal' has been reported by Brochwicz-Lewiński and Różak [19] in the Kimmeridgian dimorphic Perisphinctidae *Subnebrodites* (pro *Idoceras*) *planula* (Hehl) (Fig. 8). The figured specimen has the shell features of the macroconchs, but it bears a large lip-like peristome typical of the microconchs at the end of the shell. The significance of the apertural structures has been much debated in the literature, but it is now accepted



that they correspond to the ultimate stage of sexual maturation of the males [8, 18]. As such, the abovementioned specimens illustrate female-to-male ‘sex-reversals’.

The phenomenon would also occur in the Oxfordian Perisphinctidae dimorphic pair *Microbiplices* [m]—*Ringsteadia* [M] as suggested by 19, pl. XXXII, Fig. 1), but the figured specimen lacks a clear peristome with lappets for confirmation. Furthermore, the figured specimen rather should be re-assigned to the Kimmeridgian aulacostephanid genus *Vielunia* according to Rogov (pers. comm. 2021), which microconchs belongs to the genus *Prorasenia* [27]. Parent et al. [10] also reported a case of ‘sex reversal’ in *Ringsteadia caledonica*. This would be based on the specimen of (Sykes and Callomon [28], pl. 121, Fig. 9) (Fig. 8B). According to Parent et al. [10], the latter figured specimen develops a macroconch sculpture through its growth but has a microconch peristome at the end of the shell. It seems, however, that this case is not as straightforward as it may seem because the “microconchs of [*Ringsteadia caledonica*] have a similar style of ribbing to the macroconchs, but the adults have lappets” (Matyja et al. [29], p. 389).

It is worth noting that male-to-female ‘sex reversals’ are also reported in the fossil record. For example, (30, p. 16) reported four out of sixty specimens (6%) of the Kimmeridgian Perisphinctidae *Pectinatites* (*Virgatophinctoides*) *reisiformis* Cope, which “appear to be normal macroconchs but have on their inner whorls structures resembling those of the horn of the microconch” (Fig. 9A). Also, four *Pectinatites* specimens are “intermediate in size between the two (micro- and macroconch) groups, [...] have the typical microconch horn developed, but show the beginnings of the macroconch type of ribbing”. Another

case of male-to-female ‘sex reversal’ is reported by Brochwicz-Lewiński and Rózak [19] based on a specimen of the Oxfordian Perisphinctidae *Subdiscosphinctes cracoviensis* (Siemiradzki) figured by Méléndez and Fontana [31]. This specimen displays the onset of macroconch ornamentation [i.e. assigned to the subgenus *S. (Aureimontanites)* or *Larcheria*], after a juvenile peristome typical of the microconchs. The most recent documented case is to be found within the Kimmeridgian Aspidoceratidae dimorphic pair *Physdoceras* [M]—*Sutneria* [m] [10] (Fig. 9B). These authors illustrated a specimen of *Sutneria subeumela* bearing lappets, which shows a bituberculate sculpture stage in the sub-adult whorls typical for females. In summary, the Mesozoic ammonoids with apparent ‘sex reversals, either male-to-female or female-to-male, belong to the superfamily Perisphinctoidea (families Perisphinctidae or Aspidoceratidae) and occur between the Callovian and the Kimmeridgian stages.

Many pathologies modifying the shell geometry and/or ornamentation of ammonoids are documented in the fossil record and classified into categories called forma-types (see review by Hengsbach [32]) [33]. These forma-types usually result from exogenic causes (e.g., sublethal injury, parasitism) and their expressions reflect the developmental response of the ammonoids to a perturbation. The study of such ‘monsters’ has greatly contributed to the understanding of ammonoid evolution and biology in the past decades [34] and references therein). To our knowledge, no one ever defined a forma-type for ammonoids showing apparent ‘sex reversals’ during shell growth. We, therefore, erect a new forma-type pathology here named “forma hermaphrodita” (from Hermaphroditos, the Greek god who displayed both characteristics of male

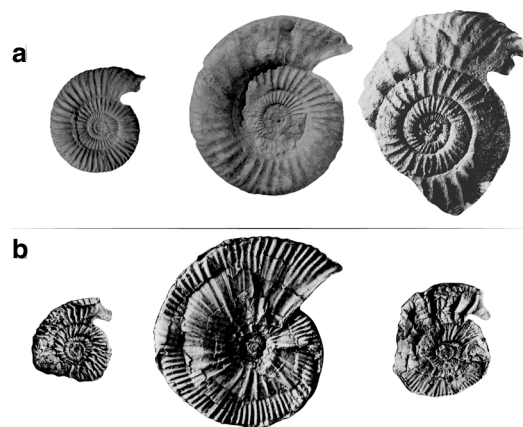


Fig. 8 Illustration of female-to-male “sex-reversals” in the Perisphinctoidea: **A** the Kimmeridgian dimorphic Perisphinctidae *Subnebrodites* (pro *Idoceras*) *planula* (Hehl). Typical [m] and [M] are from Schweigert and Kuschel [48] and the “forma hermaphrodita” is from Brochwicz-Lewiński and Różak [19], and doubtfully **(B)** the Oxfordian Perisphinctidae dimorphic pair *Microbiplices* [m]—*Ringsteadia* [M]. All specimens are from Sykes and Callomon [26]. In both cases, the putative “forma hermaphrodita” individuals have the shell features of the [M] but they bear a lappeted peristome typical of the [m]. Specimens are figured using the original scale

and female). We include the specimens of Brochwicz-Lewiński and Róża [19], Parent et al. [10] and the *P. athleta* individuals from Méron in the “forma hermaphrodita” pathology. None of these specimens presents any clear evidence for injury or parasitism although the early whorls are not preserved for further confirmation. Note that the specimen mbe.1401 of *P. athleta* has anarchic

stage (*ii*) that could pinpoint some perturbations during the early growth.

Based on the published cases listed above, all the individuals referred to as “forma hermaphrodita” belong to perisphinctoid species in which a classic sexual dimorphism is encountered. The rarity of such “forma hermaphrodita” specimens in the fossil record thus pinpoints

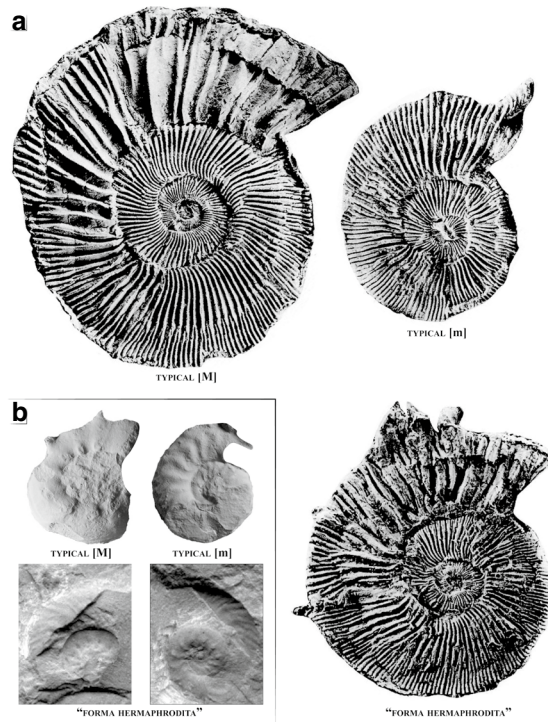


Fig. 9 Illustration of male-to-female “sex-reversals” in the Perisphinctoidea: **A** the Kimmeridgian dimorphic Perisphinctidae *Pectinatites* (*Virgatophinctoides*) *reisiformis* Cope. All specimens are from Cope [30], and **(B)** the Kimmeridgian Aspidoceratidae dimorphic pair *Physodoceras* [M]—*Sutneria* [m]. All specimens are from [49]. In **(A)**, the “forma hermaphrodita” individual appears intermediate in size between the [m] and [M], has the sculpture typical of the [M], but sporadically develops structures resembling those of the horn of the [m]. In **(B)**, the “forma hermaphrodita” individual starts with a bituberculate sculpture typical for female and develops the ornamentation and lappet typical of the [m] on the outer whorl. Specimens are figured using the original scale

a pathological nature for explaining these apparent ‘sex reversals.’

‘Sex reversals’ in the Ammonoidea and their significance

Little is known about the ammonite soft parts [8, 35], and it is usually not possible to determine which internal sexual organs occur in a specimen, which has both male and female external shell features. In gonochoric species, the anomalous case of individuals possessing gonadal tissue of one sex, but which exhibit external phenotype of the opposite sex has been previously referred to as pseudohermaphroditism. According to Lee et al. [36], pseudohermaphroditism is only a manifestation of anomalous sex development among a large mosaic of sex disorders observed in gonochoric species and the term intersexuality should be preferentially used. Considering that the Ammonoidea is a strictly gonochoristic group like modern cephalopods [3], the new “forma hermaphrodita” pathology likely illustrates intersex specimens. This conforms with a previous suggestion made by Cope [30].

The modern cephalopods group strictly gonochoric species, but external sexual features are generally lacking [37]. According to Rocha et al. [37], the sexual distinction is most often based on the presence of a hectocotylized arm in males, which transfers the spermatophores to the females. Cases of intersexuality have been reported by Ortiz and Ré [38] and Hoving et al. [39]. The abnormal cephalopod specimen of *Enteroctopus megalocyathus* described by Ortiz and Ré [38] is sexed as a female (i.e. absence of the hectocotylus) but shows internally male structures with normal genital female characteristics and orientated as in normal octopuses. The authors pointed out that “*the presence of mixed female and male structures may not have caused sterility for the female function*” (Ortiz and Ré [38], p. 321). The intermediate-sized squid specimens of *Ancistrocheirus lesueurii* described by Hoving et al. [39] show female nidamental glands in the mantle cavity associated with a normally developed male reproductive system. According to the authors, these intersex specimens are common in the population and these ‘sex reversals’ did “*not seem to affect male functionality and is apparently advantageous in that larger body size is accompanied by larger testis and spermatophores*”.

In these cases, the causes of intersexuality are not clearly established but environmental pollutants arising from human activity are evoked. According to Hoving et al. [39], environmental pollutants may have conducted to abnormal feminisation and/or masculinisation because they act as endocrine disrupters. ‘Sex reversals’ and/or non-functional reproductive abnormalities have also been documented in various gonochoric gastropods and linked to endocrine disrupters (Oberdorster and Cheek [40]). Sexual pathologies in gastropods can also result

from the infestation by trematod larvae, which stimulate or inhibit neural-endocrinal activity by direct gonadal influence [41]. This infestation ultimately leads to feminisation or masculinisation. Besides, genetic abnormalities [42], temperature fluctuations [43] or viruses [44] are mentioned in intersex fishes, isopods and crustaceans as causes for intersexuality.

The Middle to Upper Jurassic transition is not recognised as a critical period for the biosphere, which had to face deep climatic disturbances, except maybe in the Boreal Realm [45]. This period records a low magnitude, short-term global climate cooling at the Upper Callovian–Middle Oxfordian boundary followed by a subsequent warming in the Upper Oxfordian–Lower Kimmeridgian [46]. At that time, the perisphinctoid ammonites became extremely diverse and have colonised a wide range of habitats in different bioprovinces of the world [47]. Thus, it can hardly be argued that intersexuality in the Perisphinctoidea point to the occurrence of a new reproductive strategy illustrating a veritable hermaphroditism due to changing environmental conditions. Regardless of whether “forma hermaphrodita” is due to an exogenic (infestation, virus) or endogenic cause (genetic abnormalities), the high frequency of intersex Perisphinctoidea in the Jurassic deposits can be explained by the two observations: (1) the easy recognition of dimorphic pairs, and (2) the abundance of more or less adult and sufficiently preserved fossil palaeopopulations in which intersex specimens have statistically higher chances to be found (see also discussion in Klug et al. [3], §7.3.7.3).

Conclusions

We here document a new case of ‘sex reversal’ in ammonoid shells, based on two specimens of the Callovian Aspidoceratidae *Peltoceras athleta*. Those specimens have started with a female ontogeny and show an apparent change toward maleness in the adult. Other cases of female-to-male ‘sex reversal’, as well as male-to-female ‘sex reversals’ are known from the ammonoid record, all belonging to the Jurassic superfamily Perisphinctoidea (families Perisphinctidae or Aspidoceratidae). These ‘sex reversals’ are pathological in nature and are herein referred to the new forma-type pathology “forma hermaphrodita”. Regardless of whether the “forma hermaphrodita” is due to an exogenic or endogenic cause, those specimens illustrate pathologic cases of intersexuality in the Ammonoidea.

Abbreviations

D: Maximum diameter; Uw: Umbilical width; Wh: Whorl height; Ww: Whorl width; K: Number of ribs per half a whorl; [m]: Microconchs; [M]: Macroconchs.

Acknowledgements

Alain Bonnot (Université de Bourgogne) is greatly acknowledged for his comments and suggestions on the first version of the manuscript. Mikheil Rogov (Moscow) provided useful comments on the Boreal aulacostephanid ammonites and shared with us crucial literature on Oxfordian–Kimmeridgian ammonites. Bryan Bulanadi (Editorial Support Team of BMC Ecology and Evolution, Christian Klug (Zürich) and two anonymous reviewers helped a lot with their insightful comments to improve the manuscript significantly. The paper benefited from copyright permissions approved by The Palaeontological Association, as well as the open-access journals *Volumina Jurassica*, *Acta Paleontologica Polonica* and *Palaeodiversity*.

Authors' contributions

CF conceived and designed the study. CF and P-YB interpreted the specimen and its significance, as well as contributed text, figures, and revisions. All authors read and approved the final manuscript.

Funding

Not applicable.

Availability of data and materials

The Méron specimens are deposited in the private collection of P-YB under collection number mbe.9305 and mbe.1404. Arrangements are taken in his will to leave these specimens in a public collection. Plastic casts are also housed in the Frau collection—with same collection numbers—that is being deposited at the Natural History Museum of Aix-en-Provence, France.

Declarations

Ethics approval and consent to participate

Not applicable.

Consent for publication

Not applicable.

Competing interests

The authors declare that they have no competing interests.

Author details

¹Groupement D'Intérêt Paléontologique, Science et Exposition, 35 Impasse lieutenant Daumas, 83100 Toulon, France. ²Present Address: 14, rue Joannes, R49450 Villedieu-la-Blouère, France.

Received: 23 January 2021 Accepted: 8 June 2021

Published online: 26 June 2021

References

- Davis RA, Landman NH, Dommergues J-L, Marchand D, Bucher H. Mature modifications and sexual dimorphism in ammonoids. In: Landman NH, Tanabe K, Davis RA, eds. *Ammonoid paleobiology. Topics in geobiology*. New York: Plenum Press. 1996. p. 464–539
- Linnæus C. *Systema naturæ per regna tria naturæ, secundum classes, ordines, genera, species, cum characteribus, differentiis, synonymis, locis. Tomus I Salvius (Editio decima, reformata)*. 1758; p. 4 + 824.
- Klug C, Zatoń M, Parent H, Hostettler B, Takija A. Chapter 7 Mature Modifications and Sexual Dimorphism. In: Mapes RH (Ed) *Ammonoid paleobiology: From anatomy to ecology: 503 Topics in geobiology*. Springer: Netherlands. 2015a. p. 253–320.
- Callomon JH. Sexual dimorphism in Jurassic ammonites. *Trans Leicester Literature Philos Soc*. 1963;57:21–56.
- Elmi S. Le Lias supérieur et le Jurassique moyen de l'Ardèche. *Documents des Laboratoires de Géologie de Lyon*. 1967;19:1–845.
- Frau C, Bulot LG, Wimbledon WAP. The late Tithonian Himalayitidae (Perisphinctoidea, Ammonitina) from Le Chouet (Drôme, France): systematic implications. *Geol Carpath*. 2015;66:117–32.
- Frau C, Bulot LG, Wimbledon WAP, Ifrim C. Upper Tithonian ammonites (Himalayitidae Spath, 1925 and Neocomitidae Salfeld, 1921) from Charens (Drôme, France). *Geol Carpath*. 2016;67:543–59.
- Klug C, Schweigert G, Tischlinger H, Pochmann H. Failed prey or peculiar necrolysis? Isolated ammonite soft body from the Late Jurassic of Eichstätt (Germany) with complete digestive tract and male reproductive organs. *Swiss J Paleontol*. 2021;140:2–14.
- Makowski H. Problem of sexual dimorphism in ammonites. *Palaeontol Pol*. 1962;12:1–143.
- Parent H, Scherzinger H, Schweigert G. Sexual phenomena in Late Jurassic Aspidoceratidae (Ammonoidea). Dimorphic correspondence between *Physdoceras hermanni* (Berckhemer) and *Sutneria subeumela* Schneid, and first record of possible hermaphroditism. *Palaeodiversity*. 2008;1:181–7.
- Parent H, Greco AF, Bejas M. Size-Shape Relationships in the Mesozoic planispiral ammonites. *Acta Paleontol Pol*. 2009;55:85–98.
- Tintant H. *Les Kosmocératidés du Callovien inférieur et moyen d'Europe occidentale. Essai de paléontologie quantitative*. Paris: Presses Universitaires de France. 1963; p. 500.
- Schweigert G. Die Ammonitengattungen *Simocosmoceras* Spath und *Pseudhimalayites* Spath (Aspidoceratidae) im süddeutschen Oberjura. *Stuttgarter Beiträge zur Naturkunde, Serie B*. 1997;246:1–29.
- Schweigert G, Dietl G, Dietze V. Neue Nachweise von *Phlycticerus* und *Oecoptychius* (Ammonitina: Strigoceratidae: Phlycticeratinae). *Stuttgarter Beiträge zur Naturkunde Serie B*. 2003;335:1–21.
- Schweigert G, Dietze V, Chandler RB, Mitta V. Revision of the Middle Jurassic dimorphic ammonite genera *Strigoceras/Cadomoceras* (Strigoceratidae) and related forms. *Stuttgarter Beiträge zur Naturkunde, Serie B*. 2007;373:1–74.
- Westermann GEG. Sexual-Dimorphismus bei Ammonoideen und seine Bedeutung für Taxonomie der Otoitidae (Einschliesslich Sphaeroceratinae, Ammonitina, M. Jura). *Paleontographica Abteilung A*. 1964;124:33–73.
- Zatoń M. Bajocian-Bathonian (Middle Jurassic) ammonites from the Polish Jura. Part 2: families Stephanoceratidae, Perisphinctidae, Parkinsoniidae. Morphoceratidae Tullitidae *Palaeontographica abteilung A*. 2010;292:115–213.
- De Blainville MH *Prodrome d'une monographie des Ammonites*. Nabu Press, Paris. 1840; p. 31.
- Brochwicz-Lewiński W, Rózak Z. Some difficulties in recognition of sexual dimorphism in Jurassic perisphinctids (Ammonoidea). *Acta Paleontologica Polonica*. 1976;21:115–24.
- Phillips J. *Illustration of the Geology of Yorkshire*. London: Wilson Editeur. 1829; p. 192.
- Bonnot A, Boursicot P-Y, Ferchaud P. *Peltoceras marysae*, une nouvelle espèce de Peltoceratinae (Ammonitina, Aspidoceratidae) dans l'horizon à Leckenby (Callovien supérieur, zone à Athleta) de Montreuil-Bellay (Maine-et-Loire, France). *Rev Paléobiol*. 2005;24:75–95.
- Bonnot A, Boursicot P-Y, Ferchaud P, Marchand D. Les Pseudoperisphinctinae (Ammonitina, Perisphinctidae) de l'horizon à Leckenby (Callovien supérieur, zone à Athleta) de Montreuil-Bellay (Maine-et-Loire, France) et description d'une nouvelle espèce, *Choffatia isabellae*. *Carnets de Géologie / Notebooks on Geology*. 2008; Article 2008/05 (CG2008_A05).
- Bonnot A, Boursicot P-Y, Ferchaud P. Les genres *Subgrossouvria* Spath et *Orionoides* Spath (Ammonitina, Perisphinctidae) de l'Horizon à Leckenby (Callovien supérieur, Zone à Athleta) de Montreuil-Bellay (Maine-et-Loire, France). *Carnets de Géologie / Notebooks on Geology*. 2014; 14: 351–399.
- Bonnot A. Les Peltoceratinae (Ammonoidea) de la sous-zone à Trezeense (Zone à Athleta, Callovien supérieur) en Côte d'Or (France). *Géobios*. 1993;26:135–60.
- Bonnot A. Les Aspidoceratidae d'Europe occidentale au Callovien supérieur et à l'Oxfordien inférieur. Unpublished PhD thesis University of Burgundy. 1995; p. 487
- Klug C, Korn D, Landman NH, Tanabe K, De Baets K, Naglik C. Chapter 1 Describing Ammonoid Conchs. In: Mapes RH (Ed): *Ammonoid paleobiology: from anatomy to ecology: 503 Topics in geobiology*, Springer: Netherlands. 2015b; p. 3–24.
- Wierzbowski H, Glowiniak E, Pietras K. Ammonites and ammonite stratigraphy of the Bimammatum Zone and lowermost Planula Zone (Submediterranean Upper Oxfordian) at Bobrowniki and Raciszyn in the Wieluń Upland, central Poland. *Volumina Jurassica*, VIII. 2010. pp. 40–102.
- Sykes RM, Callomon JH. The *Amoeboceras* zonation of the Boreal Upper Oxfordian. *Palaeontology*. 1979;22:839–903.
- Matyja BA, Wierzbowski A, Wright JK. The Sub-Boreal/Boreal ammonite succession at the Oxfordian/Kimmeridgian boundary at Flodrigary,

- Staffin Bay (Isle of Skye), Scotland. *Trans R Soc Edinburgh Earth Sci.* 2006;96:387–405.
30. Cope JCW. The paleontology and stratigraphy of the lower part of the Upper Kimmeridge Clay of Dorset. *Bull Br Mus Nat Hist.* 1967;15:1–79.
 31. Méléndez G, Fontana B. Intraspecific variability, sexual dimorphism, and non-sexual polymorphism in the ammonite genus *Larcheria* Tintant (Perisphinctidae) from the Middle Oxfordian of western Europe. In: House MR (Ed) *The Ammonoidea: environment, ecology, and evolutionary change* Systematics Association Special Vol, 165–186; Oxford University Press: Oxford. 1993.
 32. Hengsbach R. Ammonoid pathology. In: Landman NH, Tanabe K, Davis RA (Eds) *Ammonoid Paleobiology*. Plenum Press: New York. 1996. p. 581–605.
 33. Keupp H. Atlas zur Paläopathologie der Cephalopoden. Fachrichtung Paläontologie: Institut für Geologische Wissenschaften, Freie Universität Berlin; 2012. p. 390.
 34. Jattiot R, Fara E, Brayard A, Urdy S, Goudemand N. Learning from beautiful monsters: phylogenetic and morphogenetic implications of left-right asymmetry in ammonoid shells. *BMC Evol Biol.* 2019;19:1–13.
 35. Klug C, Lehmann J. Chapter 12 Soft Part Anatomy of Ammonoids: Reconstructing the Animal Based on Exceptionally Preserved Specimens and Actualistic Comparisons. In: Mapes, R. H. (Ed): *From anatomy to ecology: 503 Topics in geobiology*, Springer: Netherlands; 2015. p. 507–529.
 36. Lee PA, Houk CP, Ahmed SF, Hughes IA. Consensus statement on management of intersex disorders. *Pediatrics.* 2006;118:488–500.
 37. Rocha F, Guerra Á, González ÁF. A review of reproductive strategies in cephalopods. *Biol Rev.* 2001;76:291–304.
 38. Ortiz N, Ré ME. First report of pseudohermaphroditism in cephalopods. *J Molluscan Stud.* 2006;72:321–3.
 39. Hoving HJT, Roelleveld MAC, Lipinski MR, Videler JJ. Nidamental glands in males of the oceanic squid *Ancistrocheirus lesueurii* (Cephalopoda: Ancistrocheiridae)—sex change or intersexuality? *J Zool.* 2006;269:341–8.
 40. Oberdorster E, Cheek AO. Gender benders at the beach: endocrine disruption in marine and estuarine organisms. *Environ Toxicol Chem.* 2001;20:23–36.
 41. Lebreton J. La sexualité des mollusques gastéropodes et les trématodes parasites. Apport de l'endocrinologie de la sexualité des gastéropodes à l'étude et à l'interprétation des conséquences du parasitisme. Premier Colloque Int de Pathologie et Parasitologie des Mollusques, Haliotis. 1977;8:215–41.
 42. Hough AR, Bannister NJ, Naylor E. Intersexuality in the mysid *Neomysis integer*. *J Zool.* 1992;226:585–8.
 43. Devlin RH, Nagahama Y. Sex determination and sex differentiation in fish: an overview of genetic, physiological, and environmental influences. *Aquaculture.* 2002;208:191–364.
 44. Rousset F, Bouchon D, Pintureau B, Juchault P, Solignac M. *Wolbachia* endosymbionts responsible for various sexual alterations of sexuality in arthropods. *Proc R Soc Lond.* 1992;250:1–98.
 45. Wierzbowski H, Bajnai D, Wacker U, Rogov MA, Fiebig J, Tesakova EM. Clumped isotope record of salinity variations in the Subboreal Province at the Middle-Late Jurassic transition. *Global Planet Change.* 2018;167:172–89.
 46. Dromart G, Garcia J-P, Gaumet F, Picard S, Rousseau M, Atrops F, Lecuyer C, Sheppard MF. Perturbation of the carbon cycle at the Middle/Late Jurassic transition: geological and geochemical evidence. *Am J Sci.* 2003;303:667–707.
 47. Schweigert G. Chapter 14. Ammonoid Biostratigraphy in the Jurassic. In: Klug C, Korn D, De Baets K, Kruta I, Mapes RH (eds) *Ammonoid Paleobiology: from macroevolution to paleobiogeography*. Topics in Geobiology, Springer 44: Netherlands. 2015; p. 389–402.
 48. Schweigert G, Kuschel H. Comments on the identification of Ammonites planula Hehl in Zieten, 1830. *Volumina Jurassica, XV. Upper Jurassic: SW Germany.* 2017; p. 1–16.
 49. Parent H, Schweigert G, Scherzinger A, Enay R. *Pasottia*, a new genus of Tithonian oppeliid ammonites (Late Jurassic, Ammonoidea: Haploceratoidea). *Boletín del Instituto de Fisiografía y Geología.* 2008;78:23–30.

Publisher's Note

Springer Nature remains neutral with regard to jurisdictional claims in published maps and institutional affiliations.

Ready to submit your research? Choose BMC and benefit from:

- fast, convenient online submission
- thorough peer review by experienced researchers in your field
- rapid publication on acceptance
- support for research data, including large and complex data types
- gold Open Access which fosters wider collaboration and increased citations
- maximum visibility for your research: over 100M website views per year

At BMC, research is always in progress.

Learn more biomedcentral.com/submissions

