

Research article

Open Access

lfkA, a presumptive eIF2 α kinase of *Dictyostelium*, is required for proper timing of aggregation and regulation of mound size

Rui Fang, Yanhua Xiong and Charles K Singleton*

Address: Department of Biological Sciences, Vanderbilt University, VU Station B 351634, Nashville TN 37235-1634, USA

Email: Rui Fang - rfang@partners.com; Yanhua Xiong - huaxiong@hotmail.com; Charles K Singleton* - charles.k.singleton@vanderbilt.edu

* Corresponding author

Published: 9 April 2003

Received: 3 February 2003

BMC Developmental Biology 2003, **3**:3

Accepted: 9 April 2003

This article is available from: <http://www.biomedcentral.com/1471-213X/3/3>

© 2003 Fang et al; licensee BioMed Central Ltd. This is an Open Access article: verbatim copying and redistribution of this article are permitted in all media for any purpose, provided this notice is preserved along with the article's original URL.

Abstract

Background: The transition from growth to development in *Dictyostelium* is initiated by amino acid starvation of growing amoebae. In other eukaryotes, a key sensor of amino acid starvation and mediator of the resulting physiological responses is the GCN2 protein, an eIF2 α kinase. GCN2 downregulates the initiation of translation of bulk mRNA and enhances translation of specific mRNAs by phosphorylating the translation initiation factor eIF2 α . Two eIF2 α kinases were identified in *Dictyostelium* and studied herein.

Results: Neither of the eIF2 α kinases appeared to be involved in sensing amino acid starvation to initiate development. However, one of the kinases, lfkA, was shown to phosphorylate eIF2 α from 1 to 7 hours after the onset of development, resulting in a shift from polysomes to free ribosomes for bulk mRNA. In the absence of the eIF2 α phosphorylation, *lfkA* null cells aggregated earlier than normal and formed mounds and ultimately fruiting bodies that were larger than normal. The early aggregation phenotype in *lfkA* null cells reflected an apparent, earlier than normal establishment of the cAMP pulsing system. The large mound phenotype resulted from a reduced extracellular level of Countin, a component of the counting factor that regulates mound size. In wild type cells, phosphorylation of eIF2 α by lfkA resulted in a specific stabilization and enhanced translational efficiency of *countin* mRNA even though reduced translation resulted for bulk mRNA.

Conclusions: lfkA is an eIF2 α kinase of *Dictyostelium* that normally phosphorylates eIF2 α from 1 to 7 hours after the onset of development, or during the preaggregation phase. This results in an overall reduction in the initiation of protein synthesis during this time frame and a concomitant reduction in the number of ribosomes associated with most mRNAs. For some mRNAs, however, initiation of protein synthesis is enhanced or stabilized under the conditions of increased eIF2 α phosphorylation. This includes *countin* mRNA.

Background

Dictyostelium is one of the simplest studied eukaryotes that possesses true multicellularity [1]. *Dictyostelium* amoebae grow and divide asexually while feeding on bacteria or within an enriched broth. When the food supply is depleted, *Dictyostelium* cells shut down growth and cell division

and enter a developmental program designed to produce and disperse spores. Mounds of about 10^5 cells form as cells stream together through chemotaxis in response to cAMP pulses. During late aggregation, the initially identical cells differentiate into several prestalk and prespore cell types, sort in specified ways, and form a finger/slug

that undergoes transient or prolonged migration depending on the environmental conditions. Culmination eventually ensues, resulting in a fruiting body with a sorus of spores held several millimeters above the substratum by a vacuolated cellular stalk, and thus situated for dispersal.

The initiating events of development of *Dictyostelium* include sensing starvation and cell density, which in turn result in the dispersed cells acquiring the ability to aggregate. The mechanism of sensing the density of starved cells insures that aggregation occurs only when there are sufficient numbers of starved cells to form aggregates and subsequent structures of appropriate size for optimized spore dispersal [2–4]. Hence, starvation and a threshold of cell density are the two known prerequisites for the transition from growth to development.

Two secreted proteins or protein complexes are involved in sensing cell density [5]. Prestarvation factor (PSF) is a glycoprotein that is secreted when cells are growing and accumulates as an indicator of the ratio of cell density relative to the supply of food [6,7]. When the ratio of *Dictyostelium* cells to nutrients is above a certain threshold, PSF induces the expression of several early developmental genes including discoidin I, lysosomal enzymes, and some components of the cAMP pulsing system [8,9]. Once nutrients are depleted, PSF production declines and a second cell density-sensing pathway is activated. Conditioned medium factor (CMF) is a 80 kDa glycoprotein that is essential for early development [3,4,10]. CMF is sequestered in vegetative cells and is secreted upon starvation [4]. A critical concentration of extracellular CMF is required for subsequent development as CMF is involved in regulating aggregation, cAMP pulsing, and early developmental events [2,3,11].

Recently several secreted protein factors were identified that control the size of aggregates and subsequent developmental structures. A large protein complex, counting factor, was purified from conditioned medium and shown to be involved in causing streaming cells to break up into groups of cells in order to generate mounds and subsequent developmental structures of the desired size [12,13]. One of the subunits of counting factor was identified and characterized, and cells that are null for the Countin subunit lack counting factor activity [13]. The result is massively large mounds and subsequent structures, with fruits that are too large to maintain their normal upright posture. Recently, another protein factor, countin2, was identified as a regulator of the minimum size of aggregates [14].

Although recent investigations have revealed several components involved in regulating the initiation of development [15–18], little or no information exists on how the

cells sense starvation and in particular amino acid deprivation. Early studies indicated that depletion of amino acids and not other nutrients is essential for initiation of development [19–21]. Upon amino acid starvation, among other events there is a substantial decrease in the rate of initiation of protein synthesis, resulting in a reduction in size and amount of polysomes and accumulation of free ribosomes [19,22,23]. It is believed that the decrease in protein synthesis in response to starvation occurs post-transcriptionally, since adding back amino acids rapidly restores protein synthesis and does not require new mRNA synthesis [22].

In yeast and mammalian cells, GCN2 is a protein that senses amino acid starvation and brings about altered cell physiology in response to such starvation [24,25]. GCN2 is a protein kinase that phosphorylates the α subunit of the translation initiation factor eIF2 [26]. The GCN2 protein from yeasts, *Drosophila*, and mammals is composed of three domains: a pseudokinase domain that may function as a regulatory domain, a kinase domain, and a HisRS domain that shares significant similarity to histidyl-tRNA synthetases [27–30]. Studies of yeast GCN2 revealed that the HisRS domain binds uncharged tRNAs that accumulate when cells are starved for amino acids [31,32]. As a result the kinase domain is activated and phosphorylates eIF2 α at Ser51. Investigations with yeast GCN2 also suggest that that C-terminus is required for ribosome binding and facilitates GCN2 dimerization and activation [33–35].

During initiation of protein synthesis, the ternary complex, eIF2/GTP/methionyl-tRNA_i, is an obligate intermediate in the binding of the initiator methionyl-tRNA_i to the 40S ribosomal subunit. Phosphorylated eIF2 α competitively inhibits the guanine nucleotide exchange factor eIF-2B, which is responsible for the recycling of eIF2 by catalyzing the conversion of eIF2-GDP to the active form eIF2-GTP [36]. Thus the overall initiation of translation is inhibited when eIF2 α becomes phosphorylated. Although the overall rate of initiation of translation is reduced by eIF2 α phosphorylation, the translation of some specific mRNAs is greatly enhanced under these conditions [24,25]. The characteristic feature of mRNAs whose translation is enhanced by GCN2 phosphorylating eIF2 α are several upstream open reading frames (uORF) within the 5' untranslated region (5'UTR) of the mRNAs. The uORFs are involved mechanistically in the enhanced initiation of these mRNAs [25].

We reasoned that a GCN2-like protein might be involved in sensing amino acid starvation in *Dictyostelium* and in regulating the growth to development transition. Searches of the *Dictyostelium* sequence databases revealed two potential GCN2-like genes that we named *ifkA* and *ifkB* (in-

itiation factor kinase). The two Ifk proteins possess all of the hallmarks of typical GCN2 proteins, including the characteristic kinase domain and the HisRS domain. IfkB is unique among GCN2-like proteins in that it does not possess the amino terminal pseudokinase domain. The findings presented herein indicate that neither of the *ifk* genes is involved in initiating development. However disruption of the *ifkA* gene resulted in several defects during the first few hours of development. *ifkA* null cells aggregated earlier than normal due to a more rapid establishment of the cAMP pulsing system. Cells lacking a functional IfkA protein also formed larger mounds and subsequent developmental structures. This defect was linked to a reduced extracellular level of Countin. Efficient translation of *countin* mRNA required increased phosphorylation of eIF2 α by IfkA. The increased phosphorylation by IfkA normally occurs from 1 to 7 hours after the onset of development, resulting in a secondary shift from polyosomes to free ribosomes for bulk mRNA.

Results

Sequence of *ifkA* and *ifkB* genes

Using the yeast GCN2 amino acid sequence as a query sequence, searches of the *Dictyostelium* genomic and cDNA sequence databases revealed two ORFs with significant identity to GCN2 proteins of yeast and mammals. These were named *ifkA* and *ifkB*, for initiation factor kinase. The *ifkA* ORF contains 2258 amino acids, and the *ifkB* ORF contains 1360 (fig. 1A). The predicted IfkB protein is a shortened version of the *ifkA* sequence; it is missing the first 898 amino acids found in IfkA, and it shares 99% sequence identity (at the DNA and amino acid level) for the remainder of the sequence. Several primers were designed to amplify and sequence the 5'-upstream sequences of the *ifkA* and *ifkB* ORFs. The results confirmed the sequences in the databases. RT-PCR followed by sequencing was also employed to confirm the predicted translation start sites.

The overall sequence identity between yeast GCN2 and the predicted *Dictyostelium* IfkA protein is 32%. Within the amino terminal sequences, yeast and other GCN2 proteins have a degenerate kinase domain of unknown function [31]. There is a 63 amino acid long sequence in IfkA that has 38% identity to the V and VI subdomains of the IfkA/B kinase domain, indicating the presence of an amino terminal pseudokinase domain in the *Dictyostelium* protein (fig. 1B). The sequence identity within the HisRS domain of IfkA/B and yeast GCN2 is 28%, with strong conservation within the M1, M2, and M3 motifs that are characteristic of class II aminoacyl-tRNA synthetases [37]. The similarity between the kinase domains is much higher, with IfkA/B possessing 44% identity with yeast GCN2, with high conservation of all of the kinase subdomains. A significant difference between the Ifk kinase domain and yeast GCN2 kinase domain is the length of the insert se-

quence between subdomain IV and V, which is around 290 amino acids in the *Dictyostelium* Ifk protein and 110 amino acids in yeast GCN2.

Expression of *ifkA* and *ifkB* mRNA during growth and development

Oligonucleotides were designed that when used in RT-PCR reactions would detect both genes or would be specific for the *ifkA* gene. RNA was isolated from the parental or "wild type" strain (Ax4) and the *ifkA* null strain (BS153, described below) during growth and at various times after the onset of development. Panel A of fig. 2 represents the additive mRNA levels from both genes in Ax4 during growth and development, while panel B reflects *ifkB* mRNA levels and panel C reflects *ifkA* mRNA levels. The results indicate that both genes are expressed during growth. *IfkB* mRNA expression remains constant as development proceeds, while the levels of *ifkA* mRNA dramatically drop soon after the onset of development and remain at a low level for the remainder of development. No *ifkA* mRNA was detected in BS153, the *ifkA* null strain (not shown).

Disruption of the *ifkA* gene

To examine the function of the *ifk* genes, we attempted to disrupt each gene individually. To date, several disruption attempts, using several different disruption constructs, have been made for *ifkB*. However, no disruptions have been obtained, indicating that perhaps the *ifkB* gene is essential. Attempts to disrupt *ifkA* were carried out using a plasmid that contained a blasticidin resistance cassette flanked by two fragments of the *ifkA* gene, each about 800 bp long and derived from the pseudokinase and kinase domains. The blasticidin resistance cassette replaced a 391 bp fragment that includes the first four subdomains (the ATP binding site) of the kinase domain. As only the 3' flanking sequence of the blasticidin resistance cassette is found in *ifkB* but not the 5' flanking sequence, the disruption construct should be specific for *ifkA*.

Several independent blasticidin resistant colonies were obtained and were initially screened using PCR. Four colonies were indicated as being disrupted in the *ifkA* gene, and these were examined by Southern analysis. All four showed an expected 1 kb shift compared with the parental strain, Ax4, resulting from the presence of the blasticidin resistance cassette (Fig. 3). RT-PCR using oligonucleotides specific to *ifkA* revealed no *ifkA* mRNA in these strains (not shown). The strain used in lane 3 was termed BS153, and this *ifkA* null strain was used in subsequent work. Some of the results below, including the morphology during development, were confirmed in the other, independently isolated null strains.

1	MAPGEIIIFE	LCQAVQEFLL	LYNKETVSLH	EEMIKRLNTN	INRVNSSDDI	NNNNNNNDD
61	DDNDNDYDSS	DDENSDDSDYD	DYDDSDDDENS	DDEFYSDDED	YNTRHQMGDI	GSSVNKIINS
121	IDHTISHGGG	VGVGIGSGNG	LFSKSSSSSS	PMIPYNFSFD	SLNGFDPDII	FEDSFQTPLK
181	GSSSIDFEEM	NMLTNSNNSN	STATTTTTTT	TNNNNNNNTN	NNNNNSNNN	NNNNNNNMT
241	NNNTNNNNNN	NNNNNNNNNN	NNNNNNNNNN	NSNNNNNISN	NKINKINNNN	NNKELIDNNN
301	NNKDKENDLI	NDTIPKIKWK	KGSCIERKSN	YSVYRGVDED	TDRKLIICKIV	NLNIDDRSSS
361	SLTSLSNSNN	NNSNNNNNNN	NNNNNNNNNN	NNNNNNNNLS	IDVVELKKRL	IEKVKMIQKE
421	IESMKYLGPN	YIIKYLGTNF	QEQNTLYIF	QEYNSTLTLQ	QKILSNIGIF	EESQVKKFTY
481	QLLLGLLYLH	SOHIPHRDFK	SHNIFFNQST	SKMLLSNYGG	RNIKIPDFHE	KLNSLKNLNS
541	WISSTNNSIN	NINNNNNNNN	NNNNNINNTT	TQNQINNEID	RREDIINLGI	VVLEMLCGSD
601	LANNQTVLIY	LAQLNLLNNO	QQNQNFIQPP	PLQYQLQQQY	DLIKEIEQKT	HPSSPISNNA
661	KDFLSLCFTI	NGNGSTNDSL	EAGILLKHPF	LASNSNSTPP	PSNFLNFTNN	IKFLDQRSAA
721	TQALLSSPHS	LIPQPIQTLI	KSQTPNNND	NNNLASSNEL	LSSSNGSNID	LRSTNSSIVS
781	NPLATSSSLD	NITPPPSRPI	SPKPSPLNKR	NQKLQTSQQK	PPLSPPQTP	KQIPQSPQSP
841	PQQNFNTPT	TTTTTTPTA	TPTTPTMTPL	TPIQKQQQID	YDMFRYHSRY	RTDFEEIE MI
901	GKGGFVGVV	SRNKLDCRY	AIKKIKTKGY	TDSNQEPLTN	KLLREVTTLS	RLHHQFVVRY
961	YQAWIEKSCD	SFQGLEEGNE	DLSGDLETDA	SEDFWQSSI	NSRSIIISRD	YSGLSTNSN
1021	VGGVNNTAGG	GDSVSNANSN	KSMIVGNSNK	KLTLSSSNTS	SSSSLLSNK	SKILNTSKST
	A		N			
1081	STNTSTSTST	SNTNKNKIS	KKKSKLSPL	MKPKNKKKN	NGESEQSSD	SENGENGMKS
1141	RIENASDSY	SDDNNNNNN	NDNNNNYHSD	NESDSFSGSI	SMSDGNNGSY	EATDDEDIIN
		- - S				
1201	NSGSFDENEN	DDDDEEDDD	EYDEEDDDYE	TFDFQDKSRV	VSNNSKLSTS	SSRKKPKKET
	D					
1261	HTLYIQMEYC	SKKTLKTLID	NVGGIAEAAA	FRLLRQIVEG	LNHIHSQQII	HRDLKPANIF
1321	IDNEQNVKIG	DFGLATSGAP	VSKSDDLNS	TSNTANNINL	SSSTNSTAQ	TPMWDLNDEN
1381	LSMTGGVGT	FYCCPEILEK	NTKHYGTVKD	MYSLGIIFPE	MCFQFQTQME	RSNILRDLRD
1441	NLKFPPGFES	TKPDQTIIR	SLLSRDPTQR	PSTKQLLESG	LLPSKMEDDI	LKEAIKTIAN
1501	PTISLFSYLM	EKLFCLSNDE	HIMSRYLTS	NPSLTPMHLI	CREKTFSRLE	KIFLNHGSIR
1561	IDTPTLFPKN	PTNSTHPGAA	NVAKFLDESG	TVVYLPYDLT	IPWARHVVIH	NIQQAQRYTF
1621	SKVYRRSQPG	FSPKELYECD	FDIIGPSKSR	HISDAETLRI	IEIMEEFKD	ELFGNNSGSN
1681	SGSGSGGSIN	YKIRINHYGL	LDSILSECGV	EKRFFTVVYQ	TVAQLHWRLN	WAQVAQSLKE
1741	HGLSASIVSN	ISTYFRQRGE	LAQCVTQLES	LLANHEEAT	GISDLKILVR	NLQMINIIPR
1801	FLLDLSLIHN	HQYYEGLVFQ	AYIERPTLSN	PSRTEIIMSG	GRYDKLIKSL	HPNPSLSNNI
1861	VSGVGVTLAC	EKIVNSVLNY	RQHLLNCFN	TTYTRRNKDP	PNSNNPNPNN	NLNNNSIIFT
1921	KFQSHIEVVF	CSLGSLLGE	KLQVASQLWS	AGIKADYSQT	DYYSSEDIYS	NCRENGIPWV
1981	VILREKAFQI	GKLVKQIET	RQERTVARKD	LVDFFLKSRL	HNVDSKNIQ	NTSSSDLNL
2041	IGGINNSGSG	GSGSGGGGS	MSSGGGGGN	SNIGGSDHHH	HGHHSNQSTS	SSGNSNSNT
			P			
2101	QQTSPIQHHV	HFSNTKSIIG	SSGIISNATF	SGGSSSSSNI	IHFDEPTDSF	STQIVYQGV
2161	EIKKSKIETL	VQTSLSKLF	GPIQSKSSTI	RVIVTDLAYS	VIRDLQISES	HDNISKFQRV
2221	SKEKLLQLKN	QIFKWKVYFP	IVIHSIKDDK	SVIFNSVV		

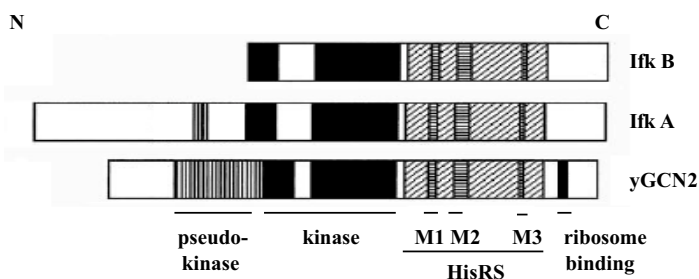


Figure 1

A) Amino acid sequences for IfkA and IfkB. The sequence for IfkA is shown in full. The first 898 amino acids that are not found in IfkB are boxed. For the remainder of the sequence, amino acid residues that differ between the two proteins are given in bold (IfkA) with the corresponding amino acid for IfkB shown underneath; a "-" indicates residues not found in IfkB. **B) Schematic structures of IfkA, IfkB and GCN2 of yeast.** Conserved regions are shown in black or striped. These include the pseudokinase domain, the kinase domain, and the histidyl-tRNA synthetase (HisRS) domain, including the m1-m3 motifs of the HisRS domain. The open regions inside the kinase domains are the insert sequences between the 4th and 5th kinase sub-domain and are not conserved among GCN2 genes from different species. The final black box at the C-terminus of yeast GCN2 indicates a cluster of positively charged residues which are thought to function in ribosome binding and dimerization. No similar sequence was identified in this region within the *Dictyostelium* genes.

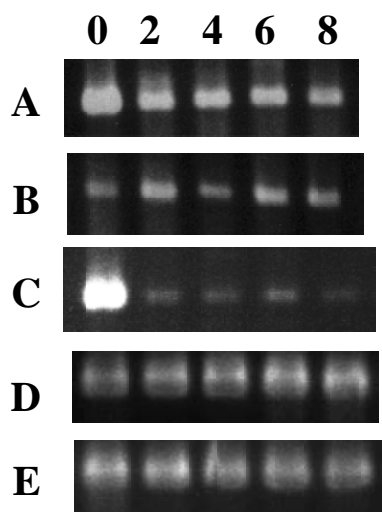


Figure 2
Detection of *ifkA* and *ifkB* mRNA levels. Total RNA was isolated from growing cells (0) and at the times indicated (in hours) after the onset of development. RT-PCR was carried out using oligonucleotides that detect both *ifk* mRNAs using RNA from the parental strain, Ax4 (panel A) or RNA from the *ifkA* null strain, BS153 (panel B). Oligonucleotides specific for *ifkA* also were used with RNA from Ax4 (panel C), and these primers gave no band when used with RNA from BS153. The picture for panel C was taken at a longer exposure time than the other two panels in order to reveal the faint bands present during development. H7 specific oligonucleotides were used as controls (H7 is a constitutively expressed gene), and the H7 band was similar in intensity for all lanes (panel D, Ax4 RNA; panel E, BS153 RNA).

Disruption of the *ifkA* gene results in earlier aggregation and formation of larger than normal mounds

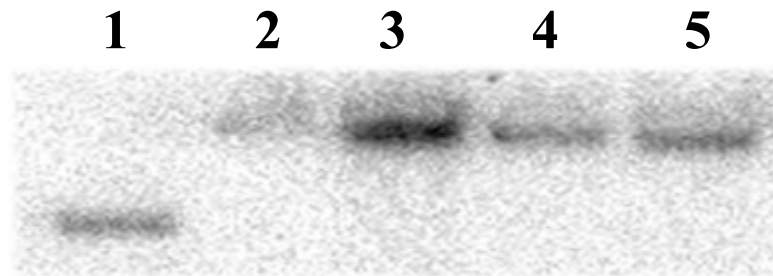
BS153 cells, possessing a disruption of the *ifkA* gene, grew slightly slower than the parental Ax4 cells in axenic broth, doubling in 10 hour instead of 8 hours (data not shown). Growth on bacteria, however, was similar for both strains. BS153 and Ax4 cells were grown on bacteria and plated under standard conditions of development after removal of the bacteria. BS153 cells were able to develop and form fruiting bodies, indicating that if *IfkA* is involved in sensing amino acid starvation to initiate development this involvement is nonessential. However, development of BS153 cells was atypical in several ways. The *ifkA* null cells

aggregated earlier than the parental Ax4 cells (fig. 4). BS153 cells formed ripples, the first visual sign of aggregation, as early as 4 hours, and the tight mound stage was attained by 7 to 8 hours after the onset of development. Ax4 cells began rippling by 7 to 8 hours and formed mounds by 11–12 hours.

In addition to precocious aggregation, BS153 mounds were significantly larger than those of the parental strain. The size of BS153 mounds was more variable than Ax4, but the majority of the mounds and subsequent structures were much larger than those of Ax4 (fig. 4). Attempt to determine cell numbers in BS153 fingers were hampered by apparently stronger than normal cell-cell adhesion and thus incomplete dispersal of the cells for counting. Based on the number and volume of the mounds relative to those of Ax4, we estimated that most BS153 mounds were more than 50% larger than Ax4 mounds.

The timing of the conversion of mounds to fingers was normal for BS153 cells. Fingers that formed from the smaller mounds went through a transient slug stag of about 1 hour, comparable to what occurred with Ax4 fingers. However, most of the larger fingers fell to the substratum and underwent extended migration as slugs (4–6 hours). During migration, more cells than normal were sloughed off and left behind in the slime trail. Although this reduced their size, after culmination (which was completed with normal timing) many of the fruiting bodies of BS153 possessed thickened stalks and large sori (fig. 4). Several fruits were unable to remain upright. Germination of BS153 spores was examined and found to be similar to that of Ax4.

When developed at low cell density in monolayers, 1.6×10^5 cells/cm² instead of 1.0×10^6 cells/cm², the ability of BS153 cells to form large aggregates was more evident. As shown in fig. 4, BS153 cells formed a few large fruiting bodies with thick stalks and a few small fruits, while Ax4 formed over 20 typically proportioned fruiting bodies of small but uniform size. Development of the cells in monolayers in buffer or in conditioned medium from BS153 or Ax4 cells [10] indicated that secreted factors were involved in causing both the earlier aggregation of BS153 cells and the larger size of the resulting multicellular entities. (not shown). One secreted factor that is involved in regulating aggregation, cAMP pulsing, and early developmental events is CMF [2,3]. CMF mRNA levels were normal in BS153 during growth and development (not shown). In addition, CMF protein levels, both cellular and secreted, also were normal in growing and developing BS153 cells (fig. 8B).

**Figure 3**

Southern analysis of transformants potentially disrupted for *ifkA*. DNA was isolated from the parental strain, Ax4 (lane 1), and from 4 independently isolated transformants (lanes 2–5) for which PCR had indicated possession of a disrupted *ifkA* gene. DNA from each was digested with *Swa*I, subjected to Southern blotting, and probed with a radioactive *ifkA* fragment. Disruption of the *ifkA* gene should result in a shift of about 1000 bp due to the insertion of the blasticidin cassette (1400 bp) and the loss of about 400 bp of the endogenous kinase domain. All of the analyzed transformants showed the expected shift, and the strain represented in lane 3 was designated BS153.

Precocious aggregation of BS153 cells reflects earlier than normal establishment of the cAMP pulsing system

To examine at the molecular level the reason for the earlier aggregation of *ifkA* null cells, the mRNA levels were examined for two proteins involved in the cAMP pulsing mechanism of aggregation and chemotaxis. The cAMP cell surface receptor Car1 (*carA* gene) is responsible for sensing secreted cAMP and activating adenylyl cyclase (*acaA* gene), which in turn results in the production and secretion of cAMP in order to relay the cAMP pulses [38]. Normally both of these genes are expressed at very low levels in growing cells, and their expression is induced during the first few hours of development, including a stimulation of expression by the cAMP pulses themselves [39].

RT-PCR was carried out on RNA isolated from growing cells and at various times after the onset of development of BS153 and Ax4 cells (fig. 5). Both *carA* and *acaA* mRNA were detected at least 2 hours earlier in BS153 cells in

comparison to Ax4 cells. Additionally, higher levels for both mRNAs were found in developing BS153 cells. The decrease in *carA* mRNA that is normally not seen until 12 hours or so in Ax4 cells was occurring by 8 hours in BS153 cells. Discoidin is another gene that is induced early but is repressed by cAMP pulses once they are established. In BS153 cells, discoidin mRNA was induced, reach maximum levels at 4 hour and rapidly decreased by 8 hours, the time mounds were formed (not shown). Both the induction and subsequent loss of discoidin was 2 to 4 hours ahead of that in Ax4 cells. The findings of earlier induction of these genes and earlier repression of discoidin are consistent with the observed early aggregation of BS153 cells. They indicate that in the absence of a functional *IfkA* protein, the proteins involved in the cAMP pulsing system are precociously produced, resulting in earlier cAMP pulsing and hence aggregation.

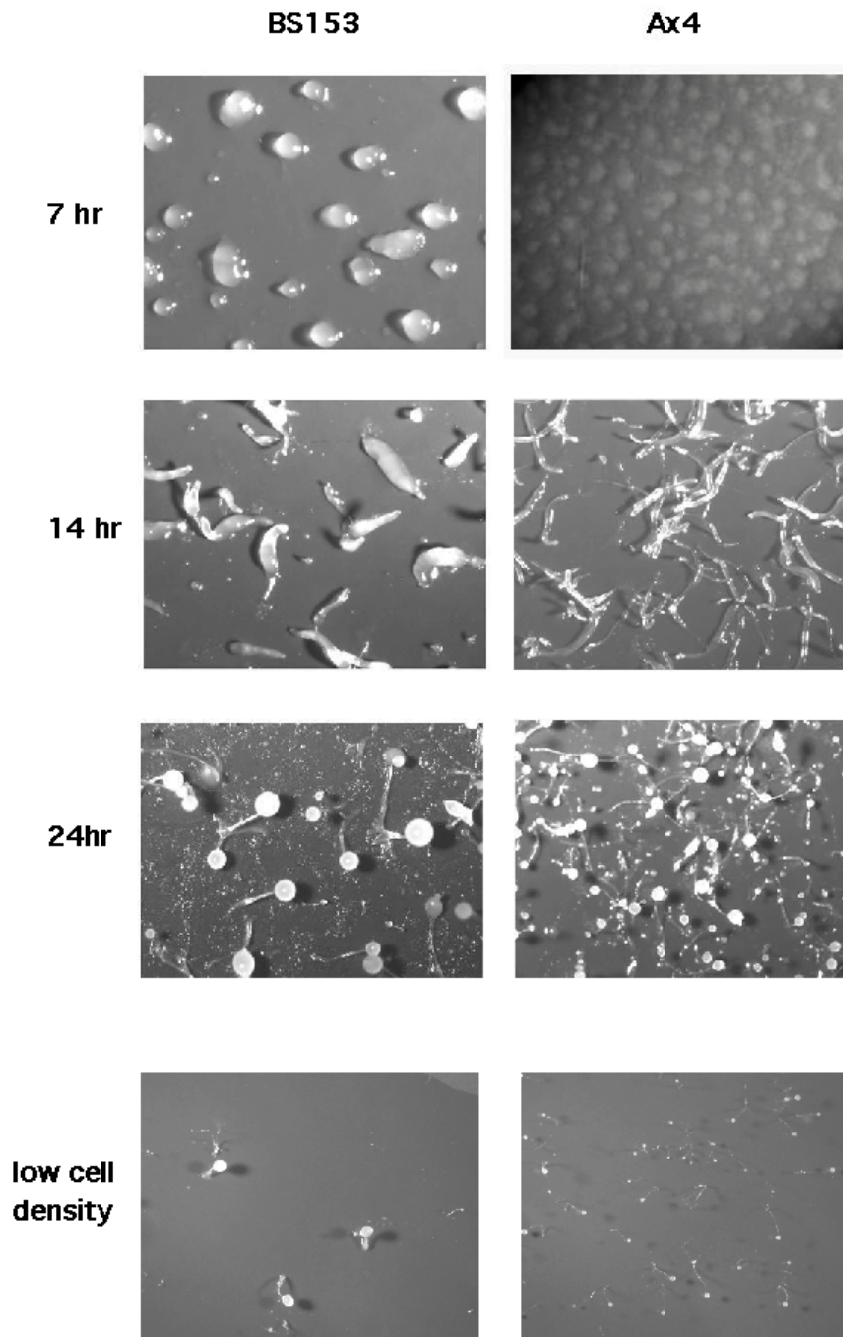


Figure 4

The morphology during development of the *ifkA* disrupted strain, BS153, and the parental strain, Ax4. Cells of both strains were plated for development under standard conditions. Pictures were taken at the indicated times in hours after the onset of development, all at the same magnification. 7 hr: BS153, tight mounds; Ax4, ripples. 14 hr: BS153 and Ax4, transient slugs; 24 hr: BS153 and Ax4, fruiting bodies. For BS153, several toppled fruiting bodies are indicated by the arrows. Both strains also were developed at a cell density about 6 fold lower than the normal cell density (low cell density panels).

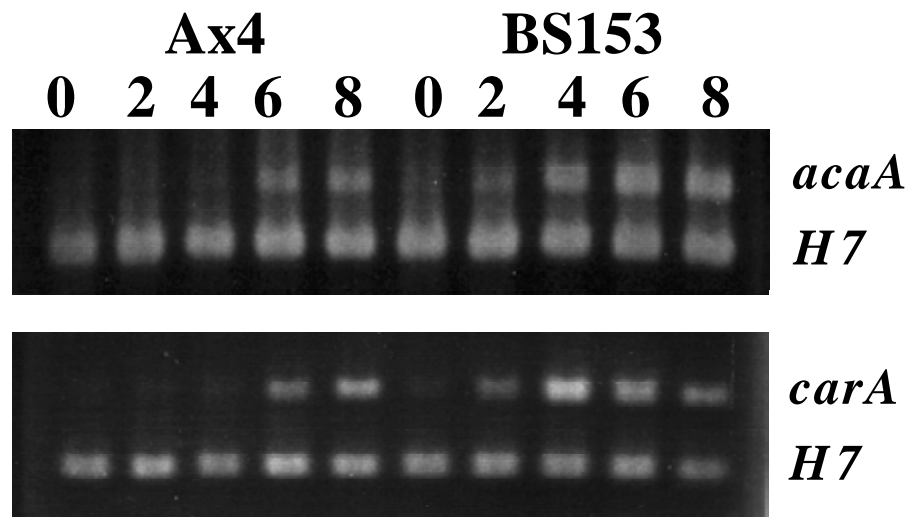


Figure 5

Detection of *acaA* and *carA* mRNAs in BS153 and the parental strain, Ax4. Total RNA was isolated from growing cells (0) and at the times indicated (in hours) after the onset of development. RT-PCR was carried out using oligonucleotides specific for either *acaA* mRNA or *carA* mRNA. H7 specific oligonucleotides were used as an internal control (H7 is a constitutively expressed gene).

Disruption of *ifkA* leads to reduced *eIF2 α* phosphorylation and altered polysome profiles

The predicted amino acid sequence of IfkA has all the hallmarks of being a kinase for eIF2 α . eIF2 α phosphorylation in Ax4 and the *ifkA* null strain was examined. Protein was isolated from growing and developing cells and subjected to western analysis using antiserum specific for phosphorylated eIF2 α . In the Ax4 parental strain, there was a basal level of phosphorylation of eIF2 α found in growing cells, and the level was higher from 2 to 6 hours after the onset of development (fig. 6). This was followed by a slow decline back to the basal level over the next 3 to 4 hours. In contrast, eIF2 α phosphorylation in BS153 cells remained at the basal, growth specific level throughout the times of development that were examined (the first 10 hours). Several independent repeats of this experiment were performed, and in each instance the small yet noticeable increase in eIF2 α phosphorylation in Ax4 and the

lack of an increase in BS153 were observed. For Ax4, the increase in phosphorylated eIF2 α was found to be 70–100% greater than the level in growing cells, while the levels in BS153 were found to vary by + 28% among all time points examined. These findings imply that IfkA is responsible for phosphorylating eIF2 α during the preaggregation period.

In *Dictyostelium*, a major shift in the polysome profile occurs as a result of starvation and initiation of development [19,23]. The percentage of mRNA associated with polysomes drops from about 80–90% in growing cells to 50–60% within several minutes of removal of the food source. This reduction was shown to be due to a decreased initiation rate for translation. One possible mechanism to account for the decreased initiation rate is phosphorylation of eIF2 α . However, the earliest we could detect a reproducible increase in phosphorylation in Ax4 cells was 45

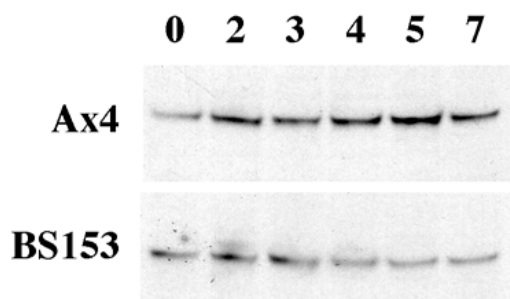


Figure 6
eIF2 α phosphorylation levels in BS153 and the parental strain, Ax4. Total protein was isolated from growing cells (0) and at the times indicated (in hours) after the onset of development. Equal amounts of each protein sample were separated by PAGE, blotted, and probed with antiserum specific for phosphorylated eIF2 α . Stripping of the filter and re-probing with antiserum specific for the V4 protein, a protein found at constant levels in growing and developing cells, indicated equivalent amounts of protein in each lane (not shown).

minutes to one hour after starvation. The previous cited results showed that the shift of ribosomes off of polysomes occurs earlier, and indeed we found that the shift occurred within both Ax4 and BS153 cells (table 1). This initial shift off of polysomes was of the same magnitude in both strains, and it was detected within minutes, prior to when we observed increased phosphorylation of eIF2 α .

However, at two hours and four hours after the onset of development evidence was found for a second, smaller magnitude polysome shift. This was revealed when the polysome profile of Ax4 cells was compared to that of BS153 cells at these later time points (fig. 7, table 1). From several independent experiments, we consistently found a larger free ribosome peak and a reduction in the polysome regions of the gradients for Ax4 compared to BS153. The increase in the free ribosome peak and decrease in the polysome region were each about 10 to 20% when compared to the BS153 profile or to the profile from Ax4 cells several minutes after starvation. The time period of this secondary shift corresponds to the time when we observed an increased phosphorylation of eIF2 α . That neither the increased phosphorylation nor the secondary polysome shift occurred in BS153 indicates that IfkA is responsible

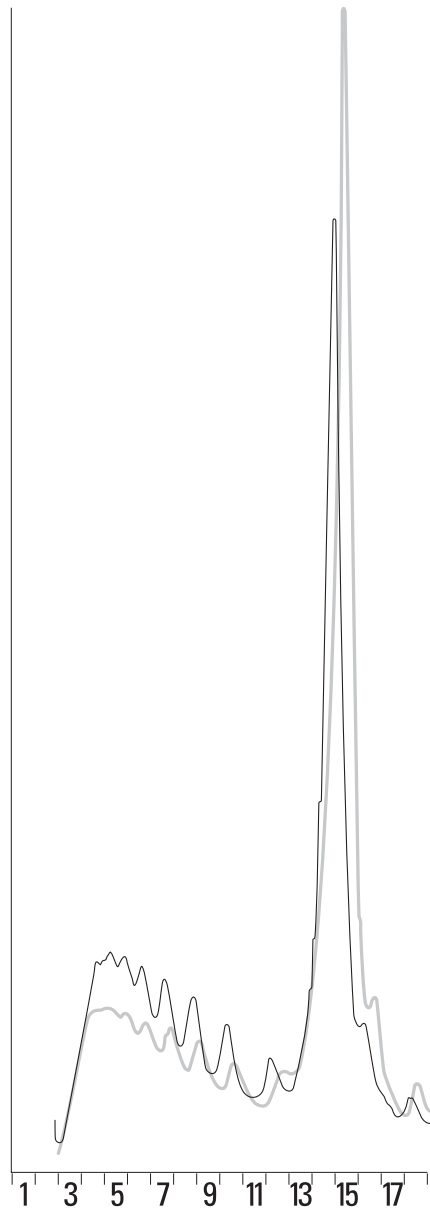
for both of these events. Although the initial decrease in translation is a result of a different mechanism, we conclude that phosphorylation of eIF2 α by IfkA from about 1 to 7 hours after the onset of development results in a further decrease in overall translation initiation and thus in a secondary shift of polysomes to free ribosomes.

Disruption of *ifkA* results in misregulation of *countin*

Counting factor is a secreted, large protein complex that regulates the number of cells within and thus the size of mounds [12]. One of the polypeptides of the counting factor complex is Countin. Disruption of the *countin* gene results in extremely large mounds and fruiting bodies [13]. As noted above, one of the phenotypes associated with disruption of the *ifkA* gene was large aggregates and fruiting bodies, and these aberrations appeared to result from a secreted factor(s). Thus, the expression of *countin* was examined in the mutant cells.

In the parental strain Ax4, the level of *countin* mRNA gradually decreased with time after the onset of development (fig. 8A), consistent with previous findings [14]. In contrast, the decrease of *countin* mRNA was much more dramatic in BS153, with little detectable mRNA present by 8 hours. To study the synthesis and secretion of the Countin protein, BS153 and Ax4 cells were removed from the bacterial food source and shaken in normal starvation buffer for varying times. Samples of both cells and (conditioned) medium were processed for western analysis using antiserum specific for the Countin protein (fig. 8B). In both Ax4 and BS153 cells, Countin remained at a constant level within cells with time after starvation. At each time point, however, less countin was found in BS153 whole cell lysates relative to the levels in Ax4 lysates (Cell panels).

Analysis of the conditioned medium from Ax4 cells indicated that extracellular Countin increased with time as was expected (fig. 8B, CM panels). However for BS153, levels of secreted Countin were reduced relative to those of Ax4, and by six hours only modest amounts of Countin had accumulated that were roughly equivalent to the accumulated level after 1.5 hours for Ax4 (CM panels). In contrast to the findings for extracellular Countin, levels of secreted CMF were the same for Ax4 and BS153 cells (CMF panels), thus ruling out a general decrease in secreted proteins in the mutant strain. Although extracellular Countin did appear to accumulate with starved BS153 cells, its concentration was reduced and accumulation was slower compared to Ax4 cells. These findings suggest that the increased size of mounds and fruiting bodies characteristic of the *ifkA* null strain may be a result of decreased production and accumulation of extracellular Countin.

**Figure 7**

The polysome profiles in BSI53 and the parental strain, Ax4. Lysates, cleared of debris and nuclei, were prepared from both strains 4 hours after the onset of development and were used as a source of polysomes/ribosomes. RNA concentrations in the lysates were determined spectrophotometrically. Sucrose gradient centrifugation was carried out on equal amounts of each sample to generate the polysome profile. The OD at 254 nm was read continuously, and fractions were collected. The black, thin line represents the profile from BSI53 and the thicker, gray line is the Ax4 profile. Fractions 3 through 11 represent polysomes with decreasing numbers of associated ribosomes going from fraction 3 to fraction 11, while fractions 13 through 16 represent free ribosomes.

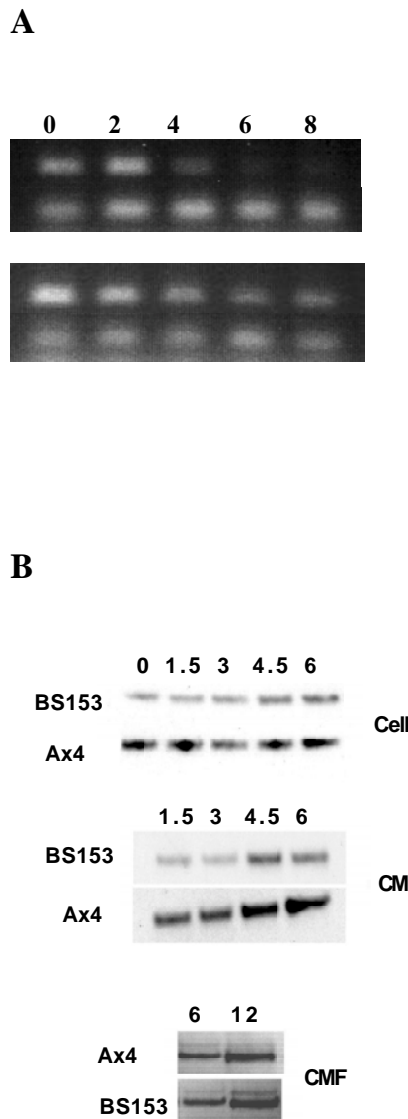


Figure 8

Countin mRNA and protein levels in BS153 and the parental strain, Ax4. A) Total RNA was isolated from cells growing on bacteria (0) and at the times indicated (in hours) after the onset of development. RT-PCR was carried out using oligonucleotides specific for *countin* mRNA (upper band in each panel). H7 specific oligonucleotides were used as an internal control (lower band in each panel). B) Ax4 and BS153 cells were washed free of bacteria, resuspended in PDF buffer at 5×10^6 cells/ml, and were incubated with shaking for the times indicated (in hours). For cellular Countin, samples were removed, and the cells were pelleted and washed. Total protein was isolated from the cells, and equal amounts of each protein sample were separated by PAGE, blotted, and probed with antiserum specific for countin (Cell panel). The conditioned medium (CM) from each sample, after removal of the cells, was used as a source of secreted Countin. The proteins from equal volumes of the CM samples were separated by PAGE, blotted, and probed with antiserum specific for Countin (CM panel). The 6 and 12 hour conditioned medium samples were concentrated, and the proteins from equivalent volumes were separated by PAGE, blotted, and probed with antiserum specific for conditioned medium factor (CMF panel).

Table 1: Percent polysomes and monosomes for different RNA samples isolated from AX4 and BS153.

Sample	% polysomes	% monosomes
0 hr. Ax4	78	22
0 hr. BS153	73	27
10 min. Ax4	58	42
10 min. BS153	55	45
4 hr. Ax4	40	60
4 hr. Ax4	36	64
4 hr. BS153	53	47
4 hr. BS153	50	50

RNA was quantitated in the polysome region (fractions 3–11 as seen in fig. 7) and the monosome region (fractions 13–16) as described in the text. Two independent 4 hour samples are shown for both strains.

Disruption of *ifkA* results in altered translation efficiency and stability of *countin* mRNA

An examination of the 5' untranslated region (5'UTR) of the *countin* mRNA revealed 5 short upstream open reading frames (uORFs). A hallmark of mRNAs, including the yeast GCN4 mRNA, that are specifically regulated by GCN2 of yeast and mammals is the presence of several uORFs within the 5' UTR [24,25]. The uORFs of *countin* mRNA, along with those of yeast GCN2 mRNA, are shown schematically in fig. 9A. The similarity suggests that Countin expression may be specifically regulated by IfkA phosphorylation of eIF2 α . To examine this possibility, the distribution of *countin* mRNA within the polysome profiles of Ax4 and BS153 were examined before and after the onset of development.

RNA was extracted from the fractions collected after sucrose gradient centrifugation of cell extracts isolated four hours after starvation. The distribution of *countin* mRNA was determined by RT-PCR. Fractions 3 through 11 represent polysomes with decreasing numbers of associated ribosomes going from fraction 3 to fraction 11, while fractions 12 through 16 represent free ribosomes (fig. 7). In both BS153 and Ax4 developing cells, *countin* mRNA was found mostly in the polysome fractions (fig. 9B). However in BS153 in comparison to Ax4, the relative abundance of *countin* mRNA was reproducibly less in the high polysome fractions and greater in the low polysome and free ribosome fractions (fig. 9B and 9C). The shift in relative abundance of *countin* mRNA within the polysome profiles of the two strains is opposite the secondary shift identified above for bulk mRNA and for the shift seen for H7 mRNA (fig. 9B). No difference in the distribution of *countin* mRNA was found between the two strains when polysome profiles from growing cells were examined (fig. 9C). The results indicate that in the absence of IfkA and its phosphorylation of eIF2 α during early development, *countin* mRNA is retained less well on polysomes and has fewer associated ribosomes. This suggests that normally

during early development in the wild type strain, enhanced translation of *countin* mRNA occurs as a result of IfkA phosphorylating eIF2 α .

The reduction of ribosomes associated with *countin* mRNA in developing BS153 cells implies a reduced translation efficiency of *countin* mRNA and probably accounts for the reduced levels of Countin found in the mutant strain. Also, it is possible that reduced association with ribosomes results in a destabilization of *countin* mRNA, and this might account for the more rapid loss and lower levels of *countin* mRNA found in BS153 cells after the onset of development. To examine this possibility, *countin* mRNA levels were examined after the inhibition of transcription, 2 hours after the onset of development, using actinomycin D [40]. After inhibition of transcription, *countin* mRNA was lost earlier in developing BS153 cells than in the parental Ax4 cells (fig. 10). Two hours after addition of actinomycin, very little *countin* mRNA remained in BS153 while only modest degradation had occurred in Ax4. Addition of cycloheximide, a translation inhibitor that inhibits dissociation of ribosomes from mRNA [23], increased the stability of *countin* mRNA. Addition of cycloheximide has been shown to result in a substantial reduction in the elongation rate of protein synthesis in *Dictyostelium* and can cause mRNAs with few ribosomes to acquire more ribosomes, i.e., it can reverse the polysome shift [23]. Taken together, these findings suggest that *countin* mRNA is destabilized in developing *ifkA* null cells due to the loss of ribosomes and decreased translation efficiency of *countin* mRNA in these cells.

Recent findings indicate the presence of another Countin-like factor, Countin2, that is involved in regulating aggregate size [14]. *Countin2* mRNA levels were found to be the same in BS153 and Ax4 during growth and development (not shown).

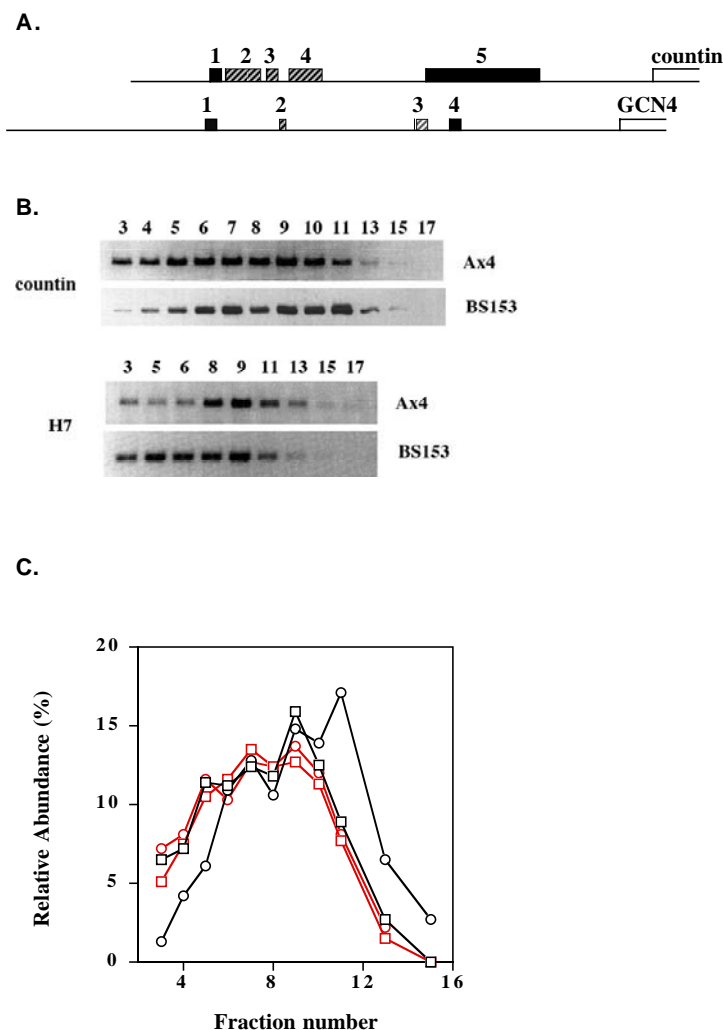


Figure 9

A) Schematic drawing of the 5' leader region of *countin* and yeast *GCN4* mRNAs. The position and size of uORFs are drawn to scale. The first and last uORFs are marked as black boxes, other uORFs are designated by striped boxes, and the open box at the 3' end represents the beginning of the coding region for *countin* and *GCN4*. **B) *Countin* and H7 mRNA distributions within the polysomes and ribosome fractions prepared as described in figure 7 from BS153 and the parental strain, Ax4, after 4 hours of development.** RNA was extracted from the isolated sucrose gradient fractions and was used in RT-PCR reactions with *countin* or H7 specific oligonucleotides. The numbers refer to the fraction used, and correspond to the numbers given in figure 7. Fractions 3 through 11 represent polysomes with decreasing numbers of associated ribosomes in going from fraction 3 to fraction 11, while fractions 13 through 16 represent free ribosomes. For the *countin* panels, the BS153 panel was exposed for a longer period of time than that of Ax4 due to the lower amounts of *countin* mRNA in this strain at four hours post starvation. **C) Quantitation of the data shown in panel B for *countin* mRNA.** Within each strain, the relative abundance of *countin* mRNA from each fraction was determined by quantitating the band in each fraction and dividing this value by the sum of the values of all the fractions for that strain. Black circles, BS153 from 4 hour polysome profile shown in panel B; red circles, BS153 from 0 hour polysome profile; black squares, Ax4 from 4 hour polysome profile shown in panel B; red squares, Ax4 from 0 hour polysome profile.

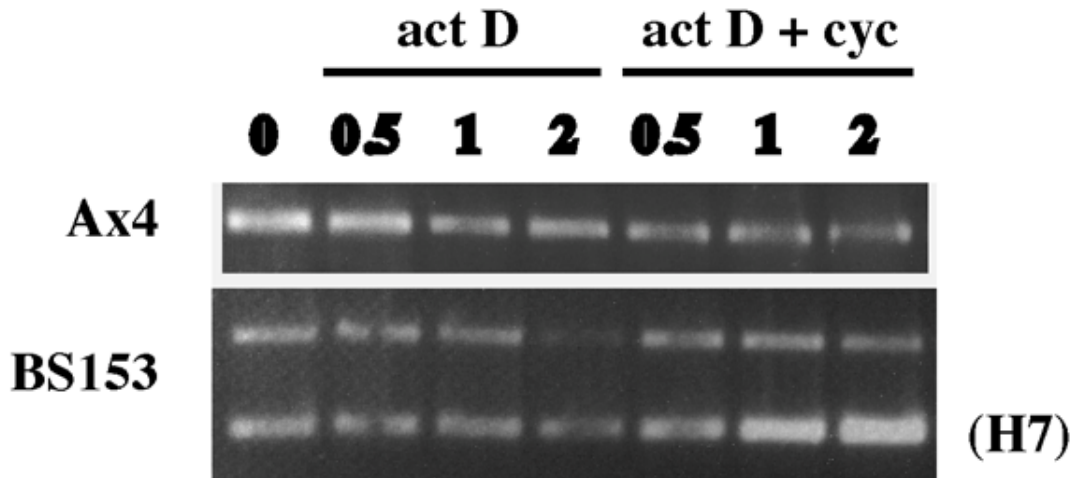


Figure 10

Relative *countin* mRNA stability in BS153 versus the parental strain, Ax4. Cells from both strains were plated under standard conditions of development after removal of bacteria. After two hours, the filters supporting the cells were transferred to paper pads soaking in fresh PDF plus actinomycin D (actD) or fresh PDF plus actinomycin D and cycloheximide (actD + cyc). After the transfers, a filter of cells was harvested at 0.5, 1, or 2 hours. Total RNA was isolated from these samples and from cells at the time of transfer (0). RT-PCR was carried out using oligonucleotides specific for *countin* mRNA (upper band in BS153 panel). For the BS153 panel, the band corresponding to H7 mRNA (lower band) is shown as an internal control. The H7 band increases with time in the actD + cyc lanes as H7 transcription is induced by cycloheximide [53].

Discussion

The multicellular developmental program of *Dictyostelium* is a response to starvation with the goals being the survival of some cells, in the form of protected spores, and dispersal of the survivors in hopes of finding an environment that supports growth. Depletion of amino acids as opposed to other nutrients such as glucose and vitamins was shown to be responsible for shutting down growth and cell division and initiating the developmental program [19–21]. Although substantial progress on the regulation of the initiation of development in *Dictyostelium* has been made [15–18], how the cells sense starvation and in particular amino acid deprivation is unknown. GCN2 of yeast and mammals is a known sensor of amino acid starvation and regulates cellular responses to such starvation [24,25]. Using degenerate primers and PCR and database searching identified two GCN2-like genes in *Dictyostelium*,

ifkA and *ifkB*. Thinking that one or both of these genes may play a role in sensing amino acid starvation and in initiating development, we carried out the work described herein to examine their functions.

The predicted amino acid sequences of *IfkA* and *IfkB* are nearly identical within the kinase domain and the HisRS domain, and in turn these two domains share significant sequence identity with GCN2 proteins from yeast, *Drosophila*, and mammals. This includes the characteristic features peculiar to the kinase domain of GCN2 proteins, the m1, m2, and m3 motifs of the HisRS domain, and a cluster of positively charged residues at the C-terminus that are thought to function in ribosome binding and dimerization [31,37,41]. Within the kinase domain, the *Dictyostelium* proteins possess an inserted sequence between the 4th and 5th kinase subdomains that is also

found in this position in all known GCN2-like proteins. The insert in *IfkA* and *IfkB* is significantly longer than that of other GCN2 proteins. The major difference between *IfkA* and *IfkB* is the amino terminal extension of about 900 amino acids that is found in *IfkA* but not *IfkB*. Similar extensions amino terminal to the kinase domain are found in GCN2 proteins from other species, and the function of this portion of the protein is unknown. This region has limited sequence identity to the kinase domain, and thus has been termed the pseudokinase domain [37]. Similarly, the extension in *IfkA* shows limited sequence identity to the kinase domain. In contrast, *IfkB* begins at the kinase domain and is the only known GCN2-like protein that does not possess a pseudokinase domain.

Even though a number of attempts have been made, we have been unable to disrupt the *ikfB* gene. This suggests it is an essential gene, a property not found for eIF2 α kinases of other organisms, and we currently have no insight into its function. Although it is possible that *IfkB* plays a role in the transition from growth to development, we do not think it does. A basal level of eIF2 α phosphorylation was found in growing cells, and this basal level was maintained during development in the *ifkA* null strain. Thus we have not detected any changes in eIF2 α phosphorylation that can be attributable to regulated *IfkB* activity. Instead, only a basal and unchanging level of phosphorylation during growth and development can be attributed to *IfkB*.

A very early event marking the initiation of development is a substantial reduction in overall translation initiation and a concomitant major shift of ribosomes from mRNA-associated ribosomes (polysomes) to free ribosomes [22,23]. The percentage of mRNA associated with polysomes drops from about 80–90% in growing cells to 50–60% within several minutes of the removal of the food source. We detect no increase in eIF2 α phosphorylation within this time frame, indicating that enhanced eIF2 α phosphorylation is not the mechanism used to bring about the rapid, initial decrease in the initiation of protein synthesis.

Disruption of the *ifkA* gene was accomplished, and several defects were found in the null strain (BS153) that indicted a role for *IfkA* and eIF2 α phosphorylation during the first several hours of development. Examining the morphology of the null strain revealed two major aberrations relative to the normal morphology attained during development. BS153 cells aggregated and formed mounds two to four hours earlier than the parental cells. Earlier aggregation was seen when cells were developed at both high and low cell densities.

The early aggregation phenotype associated with BS153 suggests that the cAMP pulsing system was established

earlier than normal. This was confirmed, indirectly, by examining the expression of several of the components of the pulsing system. mRNA for both *Carl*, the cell surface cAMP receptor, and *AcaA*, the adenylyl cyclase responsible for cAMP synthesis, was found to be induced 2 to 4 hours earlier than in the parental cells. The levels of these mRNAs were also greater in developing BS153 cells. Thus, the components of the pulsing system are produced earlier and to higher levels when *IfkA* is not functioning. In addition, these genes are "pulse-induced" genes and thus their induction during early development normally is enhanced and promoted as the cAMP pulses are established [39]. The early and more abundant induction of their mRNAs in BS153 indicate that the pulsing system is functioning earlier in the absence of *IfkA*. The earlier and more rapid loss of discoidin mRNA reinforces this conclusion as discoidin is a "pulse repressed" gene [42].

Examination of eIF2 α phosphorylation in *ifkA* null cells indicated that the *IfkA* protein is responsible for increased phosphorylation eIF2 α from 1 to 7 hours after the onset of development. Although an increase was seen in the parental strain during this time frame, eIF2 α phosphorylation levels in developing BS153 cells remained at the lower basal level found in growing cells.

Concomitant with the increased eIF2 α phosphorylation in the parental strain was a secondary shift of ribosomes from polysomes to free ribosomes. A decrease in polysomes of about 15 % and an equivalent increase in free ribosomes was observed when the polysome profile of Ax4 cells developed for 2 or 4 hours was compared to the profile from BS153 cells developed for the same time or to the profile from Ax4 cells developed for only 10 minutes. These results indicate that *IfkA* is normally active from about 1 hour to about 7 hours after starvation and normally phosphorylates eIF2 α during this time period (however, we have no direct data that demonstrates *IfkA* phosphorylates eIF2 α). *IfkA* activation at these times results in a reduction in overall protein synthesis initiation as indicated by the secondary shift of polysomes to ribosomes. Based on the normal function of GCN2-like proteins [25], these findings suggest that uncharged tRNAs are more prevalent within the cells during this time relative to either growing cells or to cells immediately after removal of the food source.

In addition to the earlier aggregation phenotype of developing BS153 cells, the *IfkA* null cells also formed atypically large aggregates, mounds, and subsequent developmental structures. This phenotype is reminiscent of cells that lack *Countin*, a component of counting factor that regulates the size of aggregates [12,13]. *Countin* mRNA was found to be lost significantly more rapidly in developing BS153 cells relative to the parental Ax4 cells.

Examination of the stability of *countin* mRNA indicated that it was turned over more rapidly in BS153 cells during early development. This suggests that *countin* mRNA is destabilized in developing cells that lack IfkA function, and we assume that *countin* mRNA synthesis is not affected in these cells. We suggest the destabilization of *countin* mRNA may be a result of the loss of ribosomes, which otherwise would afford protection from degradation, from this mRNA in BS153 cells.

The distribution of *countin* mRNA within the polysome profile was altered in developing BS153 cells. As described above, bulk mRNA undergoes a secondary shift from polysomes to free ribosomes in Ax4 cells, and this shift was not seen in BS153 cells as it is dependent upon eIF2 α phosphorylation by IfkA. More ribosomes were found to be associated with *countin* mRNA in early developing Ax4 cells relative to BS153 cells, which is the converse ribosome association with bulk mRNA in the two strains. This finding indicates that *countin* mRNA is translated more efficiently when IfkA is functioning properly. This is similar to the enhanced translation of certain yeast and mammalian mRNAs (GCN4, ATF4, both transcription factors regulated by GCN2) when GCN2 in these organisms is activated by amino acid starvation, even though bulk mRNA undergoes a decrease in translation efficiency [24,25]. The hallmark of mRNAs that are upregulated by GCN2 and eIF2 α phosphorylation is the presence of several upstream open reading frames within their 5' UTRs. The uORFs are involved mechanistically in bringing about enhanced translation initiation under conditions that otherwise favor a general decrease in translation initiation [25]. Within the 5' UTR of *countin* mRNA, we find uORFs similar in number and in arrangement to those of GCN4 mRNA, the major mRNA regulated by yeast GCN2 [25]. Thus, we suggest that *countin* mRNA, and probably other as yet identified mRNAs, are translationally upregulated when IfkA phosphorylates eIF2 α during the preaggregation period, or from 1 to 7 hours after the onset of development.

A result of the lack of increasing the translational efficiency of *countin* mRNA in developing *ifkA* null cells should be less Countin protein in these cells. Indeed we found less intracellular Countin throughout the first 8 hours after the onset of development of BS153 cells. In addition, there was significantly less Countin secreted during the first 8 hours of development. Countin, as an essential component of counting factor, regulates aggregate size after it is secreted. A high extracellular concentration of counting factor is interpreted by the cells of indicating a large number of cells within an aggregating stream. This causes the break-up of the aggregating stream into groups of the normal number of cells [43]. Thus, the large size of the structures formed by developing BS153 cells can be accounted for by the lower extracellular Countin concen-

tration and thus a lack of breaking up into smaller groups of cells. The heterogeneity of the size of the aggregates of developing BS153 might arise from the fact that extracellular countin levels eventually reach near normal levels, at about 10 to 12 hours after the onset of development. The reduced levels of Countin are not thought to account for the early aggregating phenotype of cells lacking IfkA since early aggregation was not found for *countin* null cells [43].

Why would the translation efficiency of *countin* mRNA be maintained and not reduced as is bulk mRNA during the secondary shift of polysomal RNA? Since the extracellular concentrations of Countin reflect cell density, perhaps it is important to maintain a constant level of Countin production and secretion once development has been initiated. Any drop in translation efficiency might alter the counting mechanism and result in aberrantly sized mounds.

In summary, the findings suggest that IfkA is an eIF2 α kinase of *Dictyostelium* that normally phosphorylates eIF2 α from 1 to 7 hours after the onset of development, or during the preaggregation phase. This results in an overall reduction in the initiation of protein synthesis during this time frame and a concomitant reduction in the number of ribosomes associated with most mRNAs (the secondary polysome shift). For some mRNAs, however, initiation of protein synthesis is enhanced or stabilized under the conditions of increased eIF2 α phosphorylation. This includes *countin* mRNA. As a result, appropriate amounts of Countin are secreted and aggregate size is regulated properly. In the absence of IfkA, eIF2 α phosphorylation does not increase, resulting in inefficient translation of *countin* and perhaps other mRNAs. Decreased Countin leads to larger than normal aggregates, slugs, and fruiting bodies. The larger size of many of these fruits results in their toppling over and thus in an inability to properly disperse the spores. Earlier than normal aggregation and cAMP pulsing also result from a lack of IfkA activity during preaggregation, and we postulate that this is due to the production and secretion of an as yet unidentified factor in early developing *ifkA* null cells.

Methods

Cell growth and development

The axenic strain, Ax4 [44], was used as the parental or "wild type" strain in all experiments. Cells were grown axenically in HL5 media or on SM plates with *Klebsiella pneumoniae* [45]. Cells grown in the presence of bacteria were used for development as described [46,47] unless otherwise stated.

Identification of the *ifk* genes and disruption of the *ifkA* gene

Initial studies identified a portion of the *ifkB* gene using degenerate PCR procedures based on the shared sequences of yeast, *Drosophila*, and mammalian GCN2 proteins. Sequences were eventually identified from the *Dictyostelium* cDNA project in Japan (<http://www.csm.biol.tsukuba.ac.jp/cDNAproject.html>) and the *Dictyostelium* genomic sequencing program (genome.imb-jena.de/dictyostelium (Genome Sequencing Center Jena); <http://www.uni-koeln.de/dictyostelium> (University of Cologne); dictygenome.bcm.tmc.edu (Baylor College of Medicine); and <http://www.sanger.ac.uk/Projects/D discoideum> (Sanger Centre)). Two GCN2-like genes were identified and named *ifkA* (NCBI accession AAM43647) and *ifkB* (NCBI accession AAM33717). A plasmid was constructed that carried 825 bp from the pseudokinase domain of *ofifkA* and 731 bp from the kinase domain, placed at either end of a 1.4 kb blasticidin resistance cassette [48]. A 3.95 kb *EcoR* I/*Hind* III fragment, containing the *ifkA* sequences and the blasticidin gene, was released from the plasmid and its ends were made blunt using the klenow fragment and dephosphorylated to prevent recircularization and reduce nonspecific integration of the fragment. This fragment was transformed into exponentially growing Ax4 cells using electroporation [49]. Transformants were selected as described [50]. Clonal isolates were obtained, and disruption of the *ifkA* gene was confirmed by PCR and Southern analysis. All disrupted strains had the same atypical morphology when developed under standard conditions. One strain was used for most of the experiments detailed herein, and is termed BS153.

Protein detection

For determination of the extent of eIF2 α phosphorylation, Ax4 and BS153 cells were plated for development, and samples were taken at various times. Cells were lysed in a phosphate lysis buffer to prevent protein dephosphorylation (200 mM sodium phosphate, pH 7.5, 20 mM KCl, 5% sucrose, 0.5% NP-40, 1 mM PMSF). The lysate was cleared by spinning at 5000 \times g for 10 minutes. The protein concentration of the cleared lysates was determined using the BCA protein assay kit (Pierce, Rockford IL). 40 mg of protein from each sample was separated using PAGE (NuPAGE, Invitrogen, Carlsbad CA). Phosphorylated eIF2 α was detected with antiserum specific for the phosphorylated protein (Research Genetics, Carlsbad CA). The amino acid sequence of the phosphopeptide used to raise the antibodies (EGMILSEIS*RRRIRSI, * indicates phosphorylated serine) is highly conserved among the eIF2 α proteins of all species, including that of *Dictyostelium* (I at position 8 is a L in *Dictyostelium*).

To examine the production of Countin or CMF protein in *ifkA* null cells and Ax4 cells after starvation, mid-log phase

cells growing axenically were collected, washed, and resuspended in the standard development buffer (PDF, 20 mM potassium phosphate, pH 6.1, 5 mM magnesium chloride, 0.5% streptomycin sulfate) at 5×10^6 cells/ml. The resuspended cells were shaken at 21 °C for 1.5, 3, 4.5, 6, and 12 hours. The cells and buffer from 2 ml samples were collected. The cells were lysed with HMK-NP40 (50 mM Hepes, pH 7.5, 40 mM magnesium acetate, 20 mM potassium phosphate, 5% sucrose, 0.4% NP-40), clarified, and protein concentration determined as above. After removal of the cells, the collected buffer was used as conditioned medium. For detecting Countin at each time point, 20 μ l of conditioned medium or 10 μ g of protein from the cell lysates was fractionated by PAGE. Countin protein was detected by western analysis using anti-Countin antiserum [13] kindly provided by Dr. Richard Gomer. For detecting CMF, the 6 and 12 hour conditioned medium samples were concentrated prior to fractionation by PAGE. CMF antiserum was kindly provided by Dr. Richard Gomer.

mRNA and polysome analysis

RNA was isolated, processed, and used for RT-PCR as described [51,52]. For polysome analysis, BS153 and Ax4 cells were harvested from bacterial growth plates before noticeable presence of *Dictyostelium* cell growth. After removal of bacteria, cells were plated for development as described above. After 2 and 4 hours of development, cells were collected into polysome buffer (HMK-NP40 plus cycloheximide to stabilize the polysomes). To prepare polysome samples from growing cells, cells were scraped from bacterial growth plates and suspended directly into polysome buffer. The cell lysates were spun at 8000 \times g for 5 minutes to remove nuclei, cell debris, and bacteria (for growing cell samples). The concentration of RNA in the supernatants was determined spectrophotometrically. 0.5 mg of RNA were layered onto a 11 ml linear sucrose gradient (15–50% sucrose (w/v) in polysome buffer without NP-40), and the gradients were centrifuged in a Beckman SW40Ti rotor at 28000 rpm for 4 hours at 7 °C. Gradient fractions were collected and the profile traces were generated by continuous monitoring at 254 nm. RNA from each fraction was isolated by extraction with phenol/chloroform followed by ethanol precipitation. RNA from an equivalent volume of each fraction was subjected to RT-PCR as just described, except the reactions were spiked with a small amount of radioactive dATP for quantitation. Quantitation was carried out using phosphoimaging analysis. For all RNA samples used in RT-PCR reactions, H7 specific oligonucleotides were used as a control; H7 mRNA is expressed at a constant level during growth and development [47] and thus monitors relative levels of RNA used in the reactions.

Abbreviations

eIF2 α , eukaryotic initiation factor 2 alpha; CMF, conditioned medium factor; CM, conditioned medium.

Authors' Contributions

RF carried out most of the experiments, assisted in interpretation of results, and participated in writing the manuscript. YX carried out RT-PCR reactions and RNA isolations. CKS conceived of the study, participated in its design and coordination, performed the initial polysome experiments, and participated in writing the manuscript.

Acknowledgements

This work was supported by NIH grant R01 GM59358. We thank Richard Gomer for generously supplying antiserum against Countin protein and Conditioned Medium Factor.

References

- Raper KB *The Dictyostelids* Princeton University Press, Princeton, NJ 1984,
- Gomer RH, Yuen IS and Firtel RA **A secreted 80*10(3)Mr protein mediates sensing of cell density and the onset of development in Dictyostelium** *Develop* 1991, **112**:269
- Yuen IS, Jain R, Bishop JD, Lindsey DF, Derry WJ, Van Haastert PJM and Gomer R **A density-sensing factor regulates signal transduction in Dictyostelium** *J Cell Biol* 1995, **129**:1251-1262
- Yuen IS, Taphouse C, Halfant KA and Gomer RH **Regulation and processing of a secreted protein that mediates sensing of cell density in Dictyostelium** *Develop* 1991, **113**:1375
- Clarke M, Dominguez N, Yuen IS and Gomer RH **Growing and starving Dictyostelium cells produce distinct density-sensing factors** *Dev Biol* 1992, **152**:403
- Clarke M, Kayman SC and Riley K **Density-dependent induction of discoidin-I synthesis in exponentially growing cells of Dictyostelium discoideum** *Differ* 1987, **34**:79-87
- Clarke M, Yang J and Kayman S **Analysis of the prestarvation response in growing cells of Dictyostelium discoideum** *Dev Genet* 1988, **9**:315-326
- Rathi A and Clarke M **Expression of early developmental genes in Dictyostelium discoideum is initiated during exponential growth by an autocrine-dependent mechanism** *Mech Develop* 1992, **36**:173-182
- Rathi A, Kayman SC and Clarke M **Induction of gene expression in Dictyostelium by prestarvation factor, a factor secreted by growing cells** *Dev Genet* 1991, **12**:82-87
- Jain R, Yuen IS, Taphouse CR and Gomer RH **A density-sensing factor controls development in Dictyostelium** *Genes Develop* 1992, **6**:390-400
- Jain R and Gomer RH **A developmentally regulated cell surface receptor for a density-sensing factor in Dictyostelium** *J Biol Chem* 1994, **269**:9128-9136
- Brock DA, Buczynski G, Spann TP, Wood SA, Cardelli J and Gomer RH **A Dictyostelium mutant with defective aggregate size determination** *Develop* 1996, **122**:2569-2578
- Brock DA and Gomer RH **A cell-counting factor regulating structure size in Dictyostelium** *Genes Develop* 1999, **13**:1960-1969
- Okuwa T, Katayama, Takano A, Kodaira K-i and Yasukawa H **Two cell-counting factors regulate the aggregate size of the cellular slime mold dictyostelium discoideum** *Develop Growth Differ* 2001, **43**:735-744
- Kon T, Adachi H and Sutoh K **amiB, a novel gene required for the growth/differentiation transition in Dictyostelium**. *Genes to Cells* 2000, **5**:432-55
- Souza G, Lu S and Kuspa A **YakA, a protein kinase required for the transition from growth to development in Dictyostelium** *Develop* 1998, **25**:2291-2302
- Souza GM, da Silva AM and Kuspa A **Starvation promotes Dictyostelium development by relieving PufA inhibition of PKA translation through the YakA kinase pathway** *Develop* 1999, **126**:3263-3274
- Zeng C, Anjard C, Riemann K, Konzok A and Nellen W **gdt1, a new signal transduction component for negative regulation of the growth-differentiation transition in Dictyostelium discoideum**. *Mol Biol Cell* 2000, **11**:1631-164
- Margolske JP, Froshauer S, Skrinska R and Lodish H **The effects of cell density and starvation on early developmental events in Dictyostelium discoideum** *Dev Biol* 1980, **74**:409-421
- Marin FT **Regulation of development in Dictyostelium discoideum** *Dev Biol* 1976, **48**:110-117
- Marin FT **Regulation of development in Dictyostelium discoideum** *Dev Biol* 1977, **60**:389-395
- Alton TH and Lodish HF **Translational control of protein synthesis during the early stages of differentiation of the slime mold Dictyostelium discoideum** *Cell* 1977, **12**:301-310
- Cardelli JA and Dimond RL **Regulation of protein synthesis in Dictyostelium discoideum: the effects of starvation and anoxia on initiation** *Biochem* 1981, **20**:7391-7398
- Harding H, Novoa I, Zhang Y, EZeng H, Wek R, Schapira AM and Ron D **Regulated translation initiation controls stress-induced gene expression in mammalian cells** *Mol Cell* 2000, **6**:1099-1108
- Hinnenbusch A **Translational control of GCN4: gene-specific regulation by phosphorylation of eIF2** *Translational Control (Edited by: Hershey J, Mathews M, Sonenberg N)* Cold Spring Harbor Laboratory Press, Cold Spring Harbor, NY 1996, 199-244
- Dever T, Feng T, Wek R, Cigan A, Donahue T and Hinnenbusch A **Phosphorylation of initiation factor 2 α by protein kinase GCN2 mediates gene-specific translational control of GCN4 in yeast** *Cell* 1992, **68**:585-596
- Berlanga JJ, Santoyo J and De Haro C **Characterization of a mammalian homolog of the GCN2 eukaryotic initiation factor 2 α kinase** *Eur J Biochem* 1999, **265**:754-62
- Olsen DS, Jordan B, Chen D, Wek RC and Cavener DR **Isolation of the gene encoding the Drosophila melanogaster homolog of the Saccharomyces cerevisiae GCN2 eIF-2 α kinase** *Genetics* 1998, **149**:1495-509
- Santoyo J, Alcalde J, Mendez R, Pulido D and de Haro C **Cloning and characterization of a cDNA encoding a protein synthesis initiation factor-2 α (eIF-2 α) kinase from Drosophila melanogaster. Homology To yeast GCN2 protein kinase** *J Biol Chem* 1997, **272**:12544-50
- Sattlegger E, Hinnenbusch AG and Barthelmess IB **cpc-3, the Neurospora crassa homologue of yeast GCN2, encodes a polypeptide with juxtaposed eIF2 α kinase and histidyl-tRNA synthetase-related domains required for general amino acid control** *J Biol Chem* 1998, **273**:20404-16
- Dong J, Qiu H, Garcia-Barrio M, Anderson J and Hinnenbusch AG **Uncharged tRNA activates GCN2 by displacing the protein kinase moiety from a bipartite tRNA-binding domain** *Mol Cell* 2000, **6**:269-279
- Wek SA, Zhu S and Wek RC **The histidyl-tRNA synthetase-related sequence in eIF-2 α protein kinase GCN2 interacts with tRNA and is required for activation in response to starvation for different amino acids** *Mol Cell Biol* 1995, **15**:4497-4506
- Qiu H, Garcia-Barrio MT and Hinnenbusch AG **Dimerization by translation initiation factor 2 kinase GCN2 is mediated by interactions in the C-terminal ribosome-binding region and the protein kinase domain** *Mol Cell Biol* 1998, **18**:2697-711
- Ramirez M, Wek RC and Hinnenbusch AG **Ribosome association of GCN2 protein kinase, a translational activator of the GCN4 gene of Saccharomyces cerevisiae** *Molecular and Cell Biology* 1991, **11**:3027-36
- Wek RC, Ramirez M, Jackson BM and Hinnenbusch AG **Identification of positive-acting domains in GCN2 protein kinase required for translational activation of GCN4 expression** *Mol Cell Biol* 1990, **10**:2820-31
- Price N and Proud C **The guanine nucleotide-exchange factor, eIF-2B** *Biochemie* 1994, **76**:748-760
- Ramirez M, Wek RC, Vazquez De Aldana CR, Jackson BM, Freeman B and Hinnenbusch AG **Mutations activating the yeast eIF-2 α kinase GCN2: isolation of alleles altering the domain related to histidyl-tRNA synthetases** *Molecular and Cell Biology* 1992, **12**:5801-5815
- Devreotes PN **G protein-linked signalling pathways control the developmental program of Dictyostelium** *Neuron* 1994, **12**:235-241

39. Firtel RA **Integration of signaling information in controlling cell-fate decisions in *Dictyostelium*** *Genes Develop* 1995, **9**:1427-1444
40. Mangiarotti G, Bulfone S, Gioda R, Morandini P, Ceccarelli A and Hames BD **Analysis of specific mRNA destabilization during *Dictyostelium* development** *Develop* 1989, **106**:473-481
41. Wek R, Jackson B and Hinnebusch A **Juxtaposition of domains homologous to protein kinases and histidyl-tRNA synthetases in GCN2 protein suggests a mechanism for coupling GCN4 expression to amino acid availability** *Proc Natl Acad Sci, USA* 1989, **86**:4579-4583
42. Vauti F, Morandini P, Blusch J, Sachse A and Nellen W **Regulation of the discoidin I gene in *Dictyostelium discoideum*: identification of individual promoter elements mediating induction of transcription and repression by cyclic AMP** *Molecular and Cell Biology* 1990, **10**:4080-4088
43. Tang L, Gao T, McCollum C, Jang W, Vicker M, Ammann R and Gomer RH **A cell number-counting factor regulates the cytoskeleton and cell motility in *Dictyostelium*** *Proc Natl Acad Sci, USA* 2000, **99**:1371-1376
44. Knecht DA, Cohen SA, Loomis WF and Lodish HF **Developmental regulation of *Dictyostelium discoideum* actin gene fusions carried on low copy and high copy transformation vectors** *Molecular and Cell Biology* 1986, **6**:3973-3983
45. Singleton CK, Delude RL and McPherson CE **Characterization of genes which are deactivated upon the onset of development in *Dictyostelium discoideum*** *Dev Biol* 1987, **119**:433-441
46. Singleton CK **Nucleotide sequence of V1, a ribosomal protein gene from *Dictyostelium discoideum*** *Nucleic Acids Res* 1989, **17**:1989
47. Singleton CK, Zinda MJ, Mykytka B and Yang P **The histidine kinase *dhkC* regulates the choice between migrating slugs and terminal differentiation in *Dictyostelium discoideum*** *Dev Biol* 1998, **203**:345-357
48. Sutoh KA **A transformation vector for *Dictyostelium discoideum* with a new selectable marker *Bsr*** *Plasmid* 1993, **30**:150-154
49. Howard PK, Ahern KG and Firtel RA **Establishment of a transient expression system for *Dictyostelium discoideum*** *Nucleic Acids Res* 1988, **16**:2613-2623
50. Zinda MJ and Singleton CK **The hybrid histidine kinase *dhkB* regulates spore germination in *Dictyostelium discoideum*** *Dev Biol* 1998, **196**:171-183
51. Pekovich SR, Martin PR and Singleton CK **Thiamine deficiency decreases steady-state mRNA levels for transketolase and pyruvate dehydrogenase but not for α -ketoglutarate dehydrogenase in three human cell types** *J Nutr* 1998, **128**:683-687
52. Zinda MJ **Two component sensor kinases of *Dictyostelium discoideum*** Ph D. Thesis; Vanderbilt University 1997,
53. Singleton CK, Manning SS and Feng Y **Effect of protein synthesis inhibition on gene expression during early development of *Dictyostelium discoideum*** *Molecular and Cell Biology* 1988, **8**:10-16

Publish with **BioMed Central** and every scientist can read your work free of charge

"BioMed Central will be the most significant development for disseminating the results of biomedical research in our lifetime."

Sir Paul Nurse, Cancer Research UK

Your research papers will be:

- available free of charge to the entire biomedical community
- peer reviewed and published immediately upon acceptance
- cited in PubMed and archived on PubMed Central
- yours — you keep the copyright

Submit your manuscript here:
http://www.biomedcentral.com/info/publishing_adv.asp

