

RESEARCH ARTICLE

Open Access

Exploring the HME and HAE1 efflux systems in the genus *Burkholderia*

Elena Perrin^{1†}, Marco Fondi^{1†}, Maria Cristiana Papaleo¹, Isabel Maida¹, Silvia Buroni², Maria Rosalia Pasca², Giovanna Riccardi², Renato Fani^{1*}

Abstract

Background: The genus *Burkholderia* includes a variety of species with opportunistic human pathogenic strains, whose increasing global resistance to antibiotics has become a public health problem. In this context a major role could be played by multidrug efflux pumps belonging to Resistance Nodulation Cell-Division (RND) family, which allow bacterial cells to extrude a wide range of different substrates, including antibiotics. This study aims to i) identify *rnd* genes in the 21 available completely sequenced *Burkholderia* genomes, ii) analyze their phylogenetic distribution, iii) define the putative function(s) that RND proteins perform within the *Burkholderia* genus and iv) try tracing the evolutionary history of some of these genes in *Burkholderia*.

Results: BLAST analysis of the 21 *Burkholderia* sequenced genomes, using experimentally characterized *ceoB* sequence (one of the RND family counterpart in the genus *Burkholderia*) as probe, allowed the assembly of a dataset comprising 254 putative RND proteins. An extensive phylogenetic analysis revealed the occurrence of several independent events of gene loss and duplication across the different lineages of the genus *Burkholderia*, leading to notable differences in the number of paralogs between different genomes. A putative substrate [antibiotics (HAE1 proteins)/heavy-metal (HME proteins)] was also assigned to the majority of these proteins. No correlation was found between the ecological niche and the lifestyle of *Burkholderia* strains and the number/type of efflux pumps they possessed, while a relation can be found with genome size and taxonomy. Remarkably, we observed that only HAE1 proteins are mainly responsible for the different number of proteins observed in strains of the same species. Data concerning both the distribution and the phylogenetic analysis of the HAE1 and HME in the *Burkholderia* genus allowed depicting a likely evolutionary model accounting for the evolution and spreading of HME and HAE1 systems in the *Burkholderia* genus.

Conclusion: A complete knowledge of the presence and distribution of RND proteins in *Burkholderia* species was obtained and an evolutionary model was depicted. Data presented in this work may serve as a basis for future experimental tests, focused especially on HAE1 proteins, aimed at the identification of novel targets in antimicrobial therapy against *Burkholderia* species.

Background

The genus *Burkholderia* is an interesting and complex bacterial taxonomic unit that includes a variety of species inhabiting different ecological niches [[1] and references therein]. In recent years a growing number of *Burkholderia* strains and species have been reported as plant-associated bacteria. Indeed, *Burkholderia* spp. can be free-living in the rhizosphere as well as epiphytic and

endophytic, including obligate endosymbionts and phytopathogens. Several strains are known to enhance disease resistance in plants, contribute to better water management, and improve nitrogen fixation and overall host adaptation to environmental stresses [[1] and references therein]. On the other side, some species/isolates can be opportunistic or obligate pathogens causing human, animal or plant disease. Interaction between *Burkholderia* species and humans or animals are traditionally known for *B. mallei* and *B. pseudomallei*, that are the aetiological agent of glanders and melioidosis, respectively [2]. Lastly, several *Burkholderia* species have

* Correspondence: renato.fani@unifi.it

† Contributed equally

¹Lab. of Molecular and Microbial Evolution, Dep. of Evolutionary Biology, University of Florence, Via Romana 17-19, 50125 Firenze, Italy

been demonstrated to be opportunistic pathogens in humans. Although they are not considered pathogens for the normal human population, some are serious threats for specific patient groups. These species include *B. gladioli*, *B. fungorum* and all *B. cepacia* complex (BCC) bacteria [2]. The BCC is a group of genetically distinct but phenotypically similar bacteria that up to now comprises seventeen closely related bacterial species [1,3,4], and they are important opportunistic pathogens that infect the airways of cystic fibrosis (CF) patients [5].

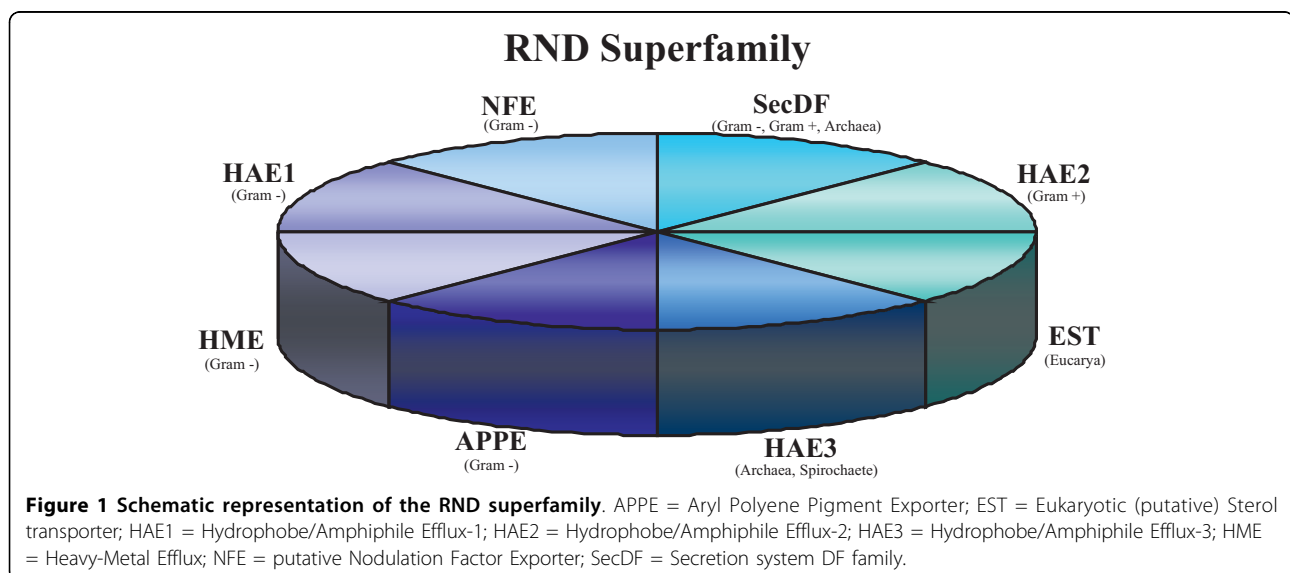
Burkholderia human infections are usually treated with antibiotics in order to improve disease control and patient survival. The increasing bacterial resistance to these molecules has become a public health problem. In this context, it seems more and more evident that the intrinsic resistance of many bacteria to antibiotics depends on the constitutive or inducible expression of active efflux systems [6,7]. This is particularly true for multidrug efflux pumps allowing bacterial cells to extrude a wide range of different substrates, including antibiotics. In contrast with other bacterial genes, encoding antibiotic resistance, acquired by horizontal gene transfer (HGT) [8], genes coding for multidrug efflux pumps are mainly harboured by the chromosome (s) of living organisms. In addition, these genes are highly conserved and their expression is tightly regulated [8]. Taken together, these characteristics suggest that the main function of these systems is likely not conferring resistance to antibiotics (used in therapy) and that they might play other roles relevant to the behaviour of bacteria in their natural ecosystems, as also pointed out by Saier and co-workers [9]. According to this idea, it has been recently propose, that MDR

proteins might have possessed (and, in some cases, might still possess) a role in preventing the build up of excessive osmotic pressure within the cells, thus functioning as safety valves for normal metabolised substrates [10].

Among the other potential roles, it has been demonstrated that efflux pumps are important for detoxification processes of intracellular metabolites, bacterial virulence in both animal and plant hosts, cell homeostasis and intercellular signal trafficking [8].

This class of proteins includes an ubiquitous and very interesting group, referred to as the RND (Resistance-Nodulation-Cell-Division) superfamily, that is mainly involved in drug resistance of Gram-negative bacteria [11,12]. Functionally characterized members of this superfamily fall into eight different families: four of them are overall restricted to Gram-negative bacteria; the other four families have a diverse phylogenetic distribution (Figure 1). Three of the families peculiar of Gram-negative bacteria have a different substrate specificity, with one catalyzing the export of heavy metals [Heavy Metal Efflux (HME)], one responsible for the export of multiple drugs [Hydrophobe/Amphiphile Efflux-1 (HAE-1)], and the last one likely catalyzing the export of lipooligosaccharides concerned with plant nodulation related to symbiotic nitrogen fixation [putative Nodulation Factor Exporter (NFE)] [13] (Figure 1). The fourth Gram-negative family (APPE) has been only recently identified [14]. It is very distantly related to the other established members of the superfamily and its representatives were shown to be a pigment exporter in *Xanthomonas oryzae* [14].

In Gram-negative bacteria RND transporters act as a complex that can bind various structurally unrelated



substrates from the periplasm and/or from the cytoplasm and extrude them out directly into the external media using proton-motive force. This complex is composed of a RND protein, located in the cytoplasmic membrane, a periplasmic-located membrane adaptor protein, belonging to the membrane fusion protein family (MFP), and an outer-membrane channel protein (OMP) [13]. Typically, the encoding genes are organized in an operon and the MFP and the RND are usually cotranscribed [15], whereas in some systems and/or species, the OMP is not linked to the other genes [16,17]. Most of the RND superfamily transport systems consists of a polypeptide chain 700-1300 amino acid residues long. These proteins possess a single transmembrane spanner (TMS) at their N-terminus followed by a large extracytoplasmic domain, six additional TMSs, a second large extracytoplasmic domain, and five final C-terminal TMSs. Most RND permeases consist of a single polypeptide chain [13]. The first half of RND family proteins is homologous to the second one, suggesting that the coding gene is the outcome of an intragenic tandem duplication event of an ancestral gene (i.e. a gene elongation event [18]) that occurred in the primordial system prior to the divergence of the family members [19]. The crystal structure of two tripartite efflux pump components, i.e. the *Escherichia coli* AcrA-AcrB-TolC [20-22] and the *Pseudomonas aeruginosa* MexA-MexB-OprM [23-25] has been determined, whose analysis led to the proposal of a mechanism of drug transport based on the transition through three different conformations [26,27].

Very little is known about RND proteins in the genus *Burkholderia*, whose representatives exhibit multiple antibiotic resistance [28-30]. Indeed, members of RND superfamily have been described for only two species: *B. cenocepacia* and *B. pseudomallei*. In the *B. cenocepacia* J2315 genome, 16 genes encoding putative RND efflux pumps were discovered [31,32]. Two of them have been shown to be associated with drug resistance: i) BCAM2550, *ceoB* (CDS10), a component of a system responsible for chloramphenicol, trimethoprim and ciprofloxacin resistance [33,34]; and ii) BCAS0765 (CDS2) that is associated with resistance to three antibiotics (fluoroquinolones, tetraphenylphosphonium, and streptomycin) as well as to ethidium bromide [31]. In *B. pseudomallei* K96243 at least 10 operons that may code for RND efflux pump components were disclosed [35]. Although differently annotated, these pumps are conserved in other *B. pseudomallei* strains [35]. Three of these systems have been characterized from a functional viewpoint: AmrAB-OprA, BpeAB-OprB and BpeEF-OprC. AmrAB-OprA and BpeAB-OprB are pumps that extrude aminoglycoside and macrolide [36,37], while BpeEF-OprC was shown to efflux trimethoprim and chloramphenicol in a surrogate *P. aeruginosa* strain [38]. Interestingly, the secretion of acyl-homoserine lactones, involved in quorum-sensing systems

of *B. pseudomallei*, is absolutely dependent on the function of the BpeAB-OprB [39,40].

Hence, given the clinical/ecological importance of *Burkholderia* representatives, and the importance of RND proteins in antibiotic resistance of Gram-negative bacteria, a large-scale bioinformatic analysis was performed aiming to provide a deeper understanding of RND proteins structure/function in *Burkholderia* genus. The importance of comparative genomics in narrow bacterial groups is an emerging issue [41-43], and it is revealing as a promising approach to gain information about the whole considered clade as well as about its representatives. Such analysis, in fact, can lead to the rapid identification of gene sets that are very likely responsible for the emergence of certain specific phenotypes in a given clade, such as virulence, symbiosis, and so on.

In particular the aims of this work were: 1) to analyze the phylogenetic distribution of CeoB-like pumps in the *Burkholderia* genus; 2) to define the function(s) they perform within the *Burkholderia* genus and 3) to try tracing the evolutionary history of these genes in *Burkholderia*.

Results and Discussion

Analysis of the amino acid sequences of the 16 CeoB-like proteins of *B. cenocepacia* J2315

The existence of 16 CeoB-like coding genes in the genome of *B. cenocepacia* J2315 was previously reported [31,32]. However, a deep analysis of these 16 proteins was not carried out until now. To this purpose, each sequence was firstly scanned for the presence of the four highly conserved motifs shared by RND proteins [11,19], whose consensus sequences are shown in Table 1[44]. The analysis of the 16 *B. cenocepacia* J2315 CeoB-like amino acid sequences revealed the existence of the motifs in each of them (see below).

In order to assess the conservation of RND proteins structure of each of the 16 sequences, a hydropathy analysis, using the Kyte and Doolittle hydropathicity scale [45] on ProtScale website <http://www.expasy.ch/tools/protscale.html>[46] (see Material and Methods), was carried out. The analysis of each of the 16 plots and a comparison with the experimentally determined secondary structure of the *E. coli* AcrB and *P. aeruginosa* MexB (not shown), allowed to identify all the 12 TMS and the two large loops, that are characteristic of RND proteins. An averaged plot of the 16 *B. cenocepacia* J2315 proteins is reported in Figure 2.

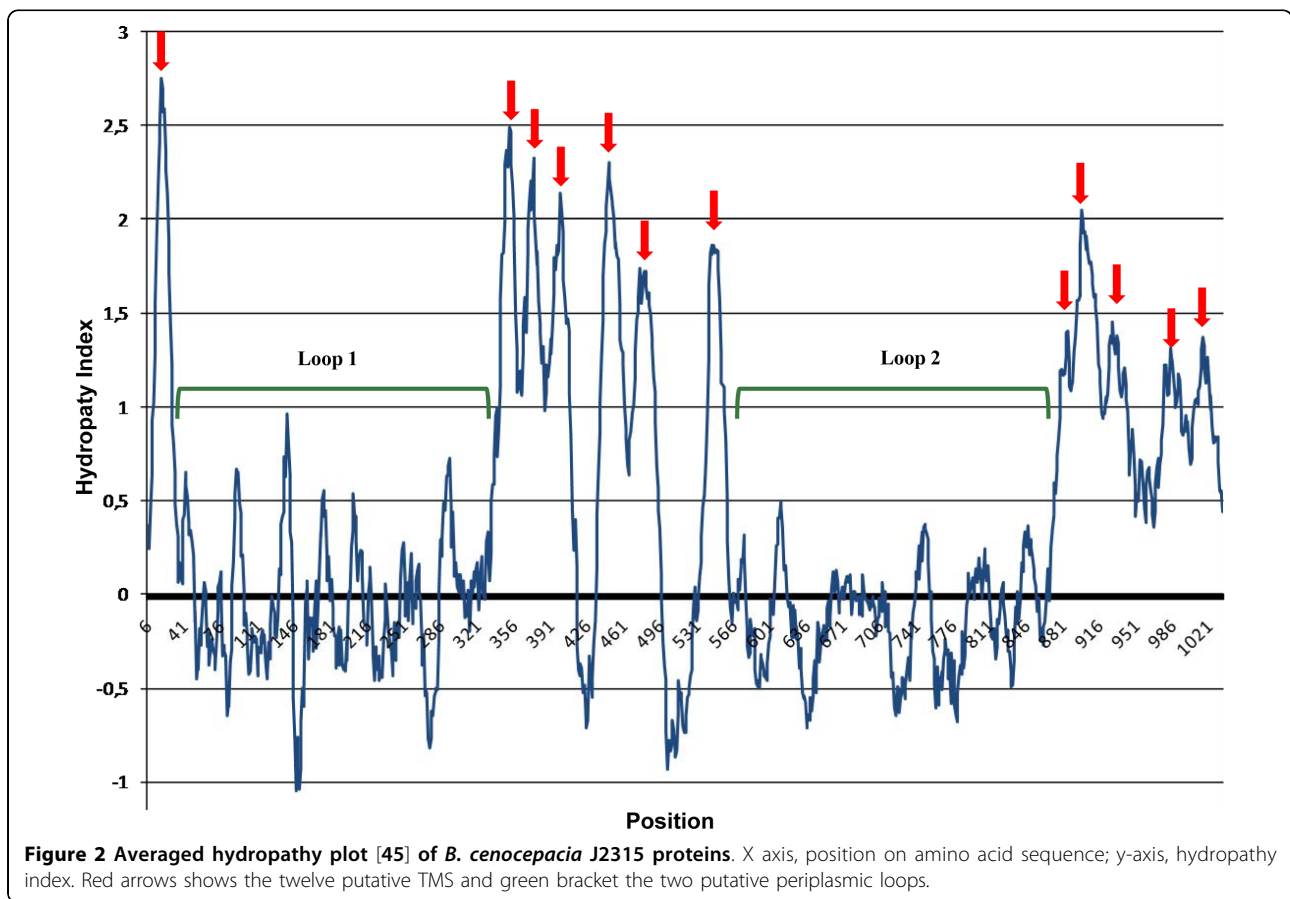
Organization and phylogenetic analysis of *rnd* genes in *B. cenocepacia* J2315

The analysis of the organization of the 16 *B. cenocepacia* J2315 *rnd* genes (Figure 3) revealed that in most cases

Table 1 Consensus sequences of RND proteins according to Putman *at al.* (2000) [44]

MOTIF	CONSENSUS SEQUENCES	
A	Old	G x s x v T v x F x x g t D x x x A q v q V q n k L q x A x p x L P x x V q x q g x x v x k
	Proposed	G x a x i t x t F x x g t d x d x A x x v V q x x x x a x x x L P x x v x p x x x x x x
B	Old	a l v l s a V F l P m a f f g G x t G x i y r q f s i T x v s A m a l S v x v a l t l t P A l c A
	Proposed	t l v l x a V F v P x a f x x G x x G x l f r x f A x t x a x a x x x S x x x a l t L x P a L c a
C	Old	x x x G k x l x e A x x x a a x x R L R P I L M T s L a f i l G v l P l a i a t G x A G a
	Proposed	x x x G x x p x x A x x e A a x l R l R P I l M T x l A x x l G x x P L a x x x G - a G s
D	Old	S i N t l T l f g l v l a i G L l v D D A I V v V E N v e R v l a e
	Proposed	s i N x l s L x g l v L a i G i l V D D A I V v v E N v e R x x x E

Table reported the previously individuated and the new proposed consensus sequence. X indicates any amino acid, capital letters show amino acids most frequently observed in a given position in more than 70% of the transport proteins, and lowercase letters represent amino acid occurring in at least than 40% of RND amino acid sequences.



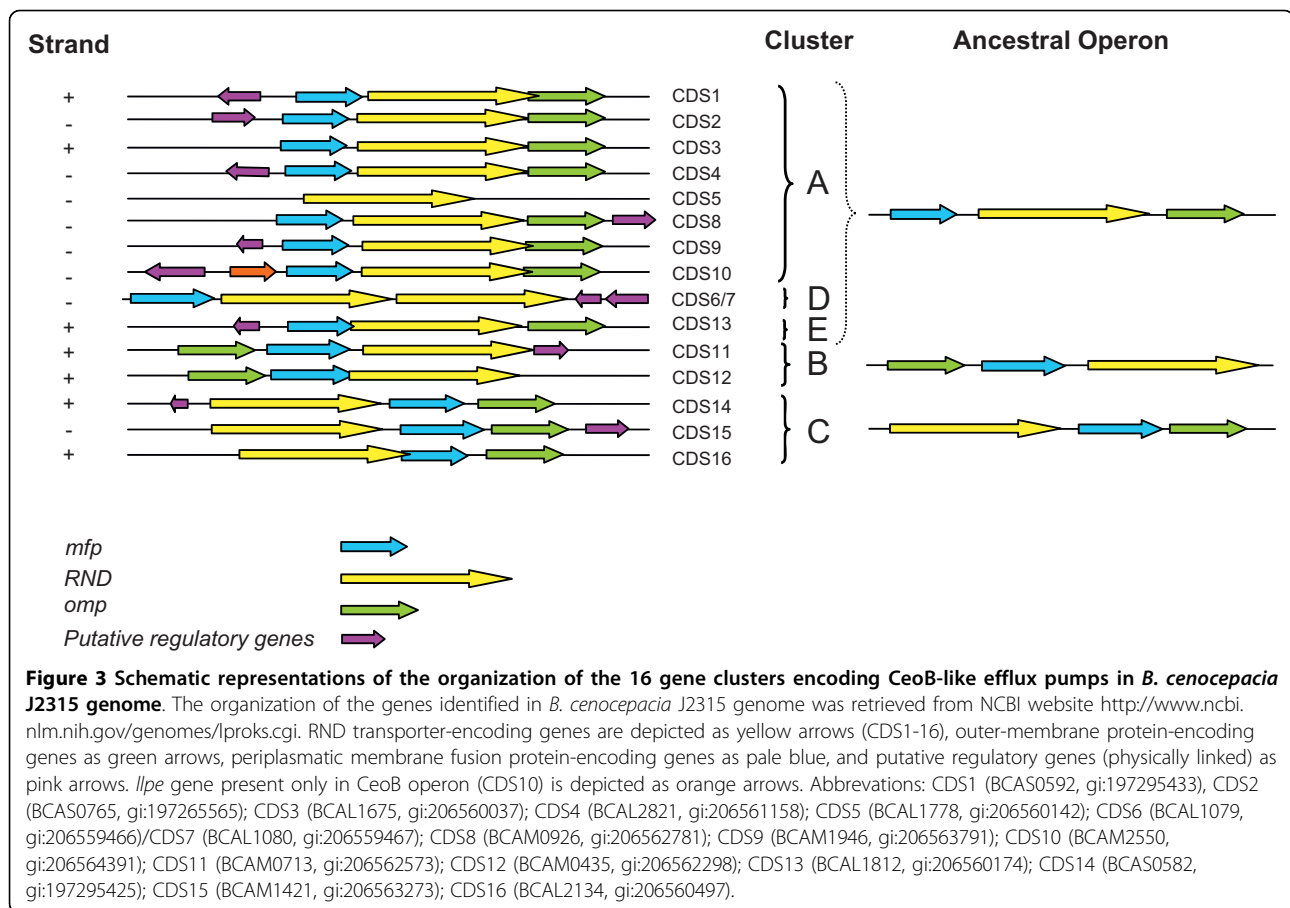
the three genes are organized in a putative operon with three different gene arrays:

- i) in the first one, shared by CDSs 1-4, 8-10 and 13, the *ceoB* gene is located in between two genes encoding MFP and OMP;
- ii) in the second array, shared by CDS11 and 12, the *ceoB* gene is located downstream from the other two genes;

iii) lastly, in the third one, *ceoB* is located upstream of the other two genes.

Besides, in one case (CDS5), the *ceoB*-like sequence is not embedded in a cluster including the other two genes; in another case (CDS6-7), two *ceoB*-like redundant copies were tandemly arranged.

In order to analyse the phylogenetic relationships among the 16 *CeoB*-like proteins their amino acid



sequences were aligned using the program ClustalW [47] and the multialignments obtained were used to construct the phylogenetic tree shown in Figure 4a. The topology of the tree, which is supported in most cases by very high bootstrap values, revealed that the 16 sequences can be split into five clusters (A, B, C, D, and E).

It is worth noting that the overall different gene organization of CeoB, MFP and OMP coding genes is consistent with the subdivisions in the phylogenetic tree in Figure 4a.

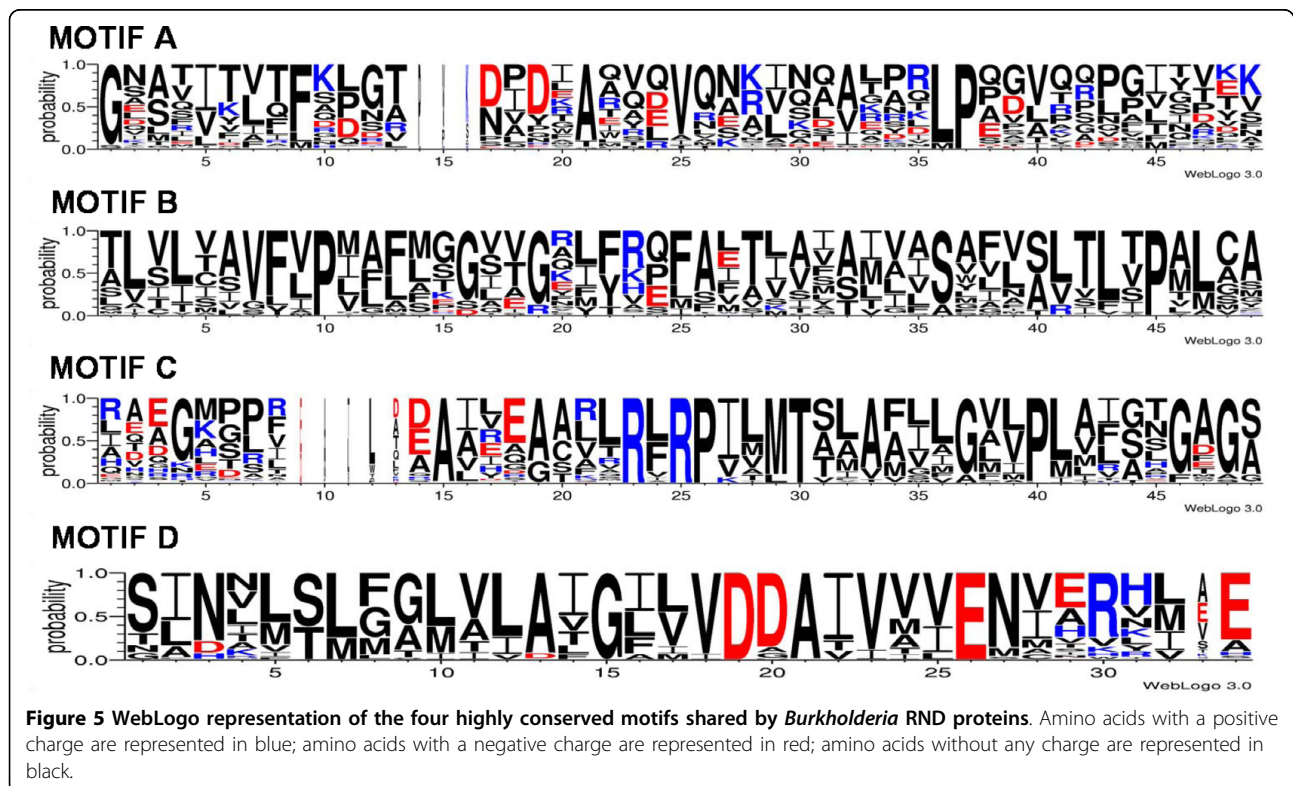
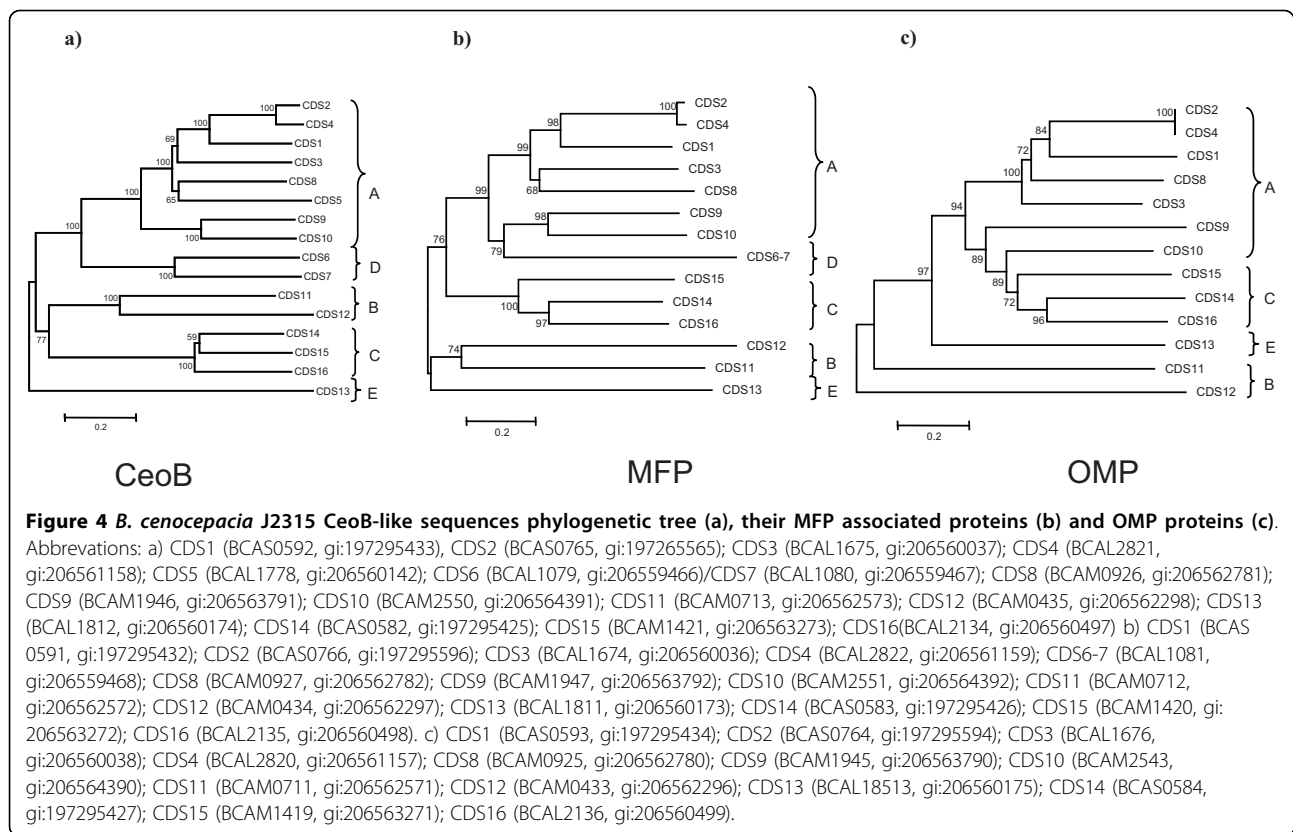
A similar phylogenetic analysis was also performed using the amino acid sequence of MFP and OMP proteins encoded by genes embedding each operon. Data obtained revealed that the five clusters (A, B, C, D, and E) can be easily recognized in the MFP tree (even though the branching order is different) (Figure 4b). This is in agreement with the notion that the two proteins have to interact and often belong to the same transcriptional unit. The topology of OMP tree is slightly different from the other two, in that some of the sequences of cluster A are intermixed with those of cluster C (Figure 4c). This finding might suggest that this gene could have followed a (partially) independent evolutionary pathway, which is also in agreement with

the fact that in some cases it is missing in the RND operons.

Identification and distribution of ceoB-like genes in the genus *Burkholderia*

In order to check the distribution of the CeoB-like proteins in the entire genus *Burkholderia*, the *B. cenocepacia* J2315 CeoB amino acid sequence (gi:206564391) was used as a query to probe the 21 completely sequenced genomes of strains belonging to *Burkholderia* genus available at NCBI database <http://www.ncbi.nlm.nih.gov> (1/05/2009), using default parameters. In this way, a total of 254 sequences homologous to *B. cenocepacia* J2315 CeoB were retrieved.

Each sequence was analyzed for the presence of the four highly conserved motifs shared by RND proteins [11,19]. Data obtained (not reported) revealed the existence of the four motifs in all the 254 *Burkholderia* sequences, supporting the idea that they actually are members of RND superfamily. The relative frequency of each amino acid in each position was checked using the WebLogo application (see Material and Methods) (Figure 5). In some cases this frequency differed from the consensus sequence(s) previously suggested [44].



This is due to the fact that our dataset includes a larger number of sequences in respect to the previous ones [11,19,48]. Hence, we suggested new possible consensus motifs for these sequences (Table 1).

Figure 5 and Table 1 show that Motif A and Motif D represent the least and the most conserved ones, respectively. This is in agreement with the notion that Motif A is located on the first periplasmic loop; many studies demonstrated that periplasmic regions of RND proteins are involved in substrate recognition [49-54]. Thus, a higher sequence variability of Motif A among various proteins is consistent with the possible recognition of different substrates. On the other hand, part of Motif D coincides with TMS4, which is involved in proton translocation [55,56], a function common to all RND proteins. Thus, as expected, this region should exhibit a high degree of conservation among proteins transporting different substrates.

As shown in Table 2, a highly variable number of CeoB-like proteins, ranging from 6 (in *B. mallei* NCTC10247, NCTC10229 and SAVP1) to 18 (in *B. cenocepacia* HI2424 and MC0-3) was found.

The 254 *Burkholderia* amino acid sequences retrieved were then aligned using the Muscle program (see Material and Methods); the obtained multialignment was then used to construct the phylogenetic tree schematically reported in Figure 6 (the entire tree is available in Additional File 1). In the same Figure residues characterising each group of sequences are also reported (see following sections). The analysis of phylogenetic tree revealed that the majority of sequences form clusters including one of the *B. cenocepacia* J2315 sequences (Figure 6, black triangles), while other sequences form clusters that do not comprise any *B. cenocepacia* J2315 sequence. In particular, two of these clusters contain sequences from only *B. mallei*, *B. pseudomallei* and *B. thailandensis* (highlighted with red triangles in Figure 6). However, in the whole phylogenetic tree, the sequences can be easily subdivided into the five clusters (A, B, C, D, and E) corresponding to the previously identified ones (Figure 3a) (although embedding a variable number of sequences).

Functional assignment of the 254 *Burkholderia* CeoB-like sequences

A preliminary analysis, performed by aligning all the 254 *Burkholderia* sequences with the sequences representative of the five RND families identified in Gram-negative bacteria and experimentally characterized retrieved from Transport Classification Database (TCDB, <http://www.tcdb.org>) [57], revealed that most of these sequences could be unambiguously assigned to only two RND families: HAE1 and HME. Indeed, only sequences belonging to these two families shared a significant

degree of similarity with the *Burkholderia* sequences, whereas those representative of the other three families (NFE, APPE, SEC DF) resulted highly divergent from the *Burkholderia* ones and could not be reliably aligned (the average degree of identity between the 254 *Burkholderia* sequences and those representative of these families are: 23% for NFE proteins, 11% for APPE family and 9% for SecDF family).

To confirm this preliminary assignment and try to determine the substrate of each pump, three different analyses were performed:

- i) comparison of the 254 CeoB-like sequences with the amino acid sequence of HAE1 and HME experimentally characterized proteins, belonging to other microorganisms;
- ii) analysis of highly conserved amino acid residues, essential for proton translocation;
- iii) analysis of residues involved in substrate recognition.

Comparison with HAE1 and HME experimentally characterized proteins belonging to other microorganisms

A set of 62 sequences representative of HAE1 and HME families was retrieved from both TCDB and literature (all proteins and their relative substrate are reported in Additional File 2) and aligned with the 254 *Burkholderia* sequences. The multialignment was used to build the phylogenetic tree reported in Additional File 3, and a phylogenetic tree including a subset of these is shown in Figure 7, where the five major clusters (A, B, C, D, E) of Figures 3 and 6 were easily recognized. Three of these clusters (A, D and E, red branches) included characterized proteins belonging to HAE1 family that are known to be involved in antibiotic(s) resistance.

Another cluster (in blue) comprised HME proteins (Cluster B in Figure 6), involved in heavy metal efflux.

Lastly, none of the characterized proteins showed similarity with those grouped in cluster C (pink branches). Indeed, no function could be assigned to these proteins, although they appear to be closer to HME than HAE1 sequences.

The analysis of substrate specificity of each characterized protein revealed that HME proteins, transporting different metals, form two distinct clusters. The first one, contained the protein gi:206562298 from *B. cenocepacia* J2315 (CDS 12), which transports monovalent cations (Cu^+ and Ag^+), the other one, included the sequence gi:206562573 from *B. cenocepacia* J2315 (CDS11), transporting divalent cations (Zn^{2+} , Co^{2+} , Cd^{2+} and Ni^{2+}).

Analysis of highly conserved amino acid residues essential for proton translocation

It has been proposed that some charged residues in TMS 4 and TMS 10 sequences are essential for proton

Table 2 Total number of RND proteins and number of RND proteins of each type present in each family of the 21 *Burkholderia* analysed genomes

Species	Number of												NC
	CeoB-like Proteins	HAE1 (A)	HAE1 (D)	HAE1 (E)	tot HAE1	CDS 11 (B)	CDS 12 (B)	tot HME	CDS 14 (C)	CDS 15 (C)	CDS 16 (C)	tot UF	
<i>B. ambifaria</i>	11	3	2	2	7	-	1	1	1	1	1	3	-
	13	4	2	3	9	-	1	1	1	1	1	3	-
<i>B. cenocepacia</i>	18	9	2	2	13	1	1	2	1	1	1	3	-
	17	8	2	2	12	1	1	2	1	1	1	3	-
	16	8	2	1	11	1	1	2	1	1	1	3	-
<i>B. lata</i>	18	9	2	2	13	1	1	2	1	1	1	3	-
	13	8	2	1	11	1	-	1	-	1	-	1	-
<i>B. mallei</i>	6	3	1	-	4	1	1	2	-	-	-	-	-
	6	3	1	-	4	1	1	2	-	-	-	-	-
	6	3	1	-	4	1	1	2	-	-	-	-	-
	7	3	1	1	5	1	1	2	-	-	-	-	-
<i>B. multivorans</i>	12	5	2	1	8	1	2	3	-	1	-	1	-
	16	7	4	3	14	-	-	-	1	1	-	2	-
<i>B. phymatum</i>	16	7	4	1	12	-	-	-	2	1	-	3	1
<i>B. pseudomallei</i>	10	4	3	1	8	1	1	2	-	-	-	-	-
	10	4	3	1	8	1	1	2	-	-	-	-	-
	10	4	3	1	8	1	1	2	-	-	-	-	-
	11	4	3	1	8	1	-	1	-	-	-	-	2
<i>B. thailandensis</i>	11	5	2	1	8	-	1	1	1	1	-	2	-
<i>B. vietnamiensis</i>	17	6	4	1	11	1	-	1	2	1	2	5	-
<i>B. xenovorans</i>													

Abbreviations: HAE1: Hydrophobe/Amphiphile Efflux-1, HME: Heavy-Metal Efflux, UF: Uncertain Function, NC: Not Classified

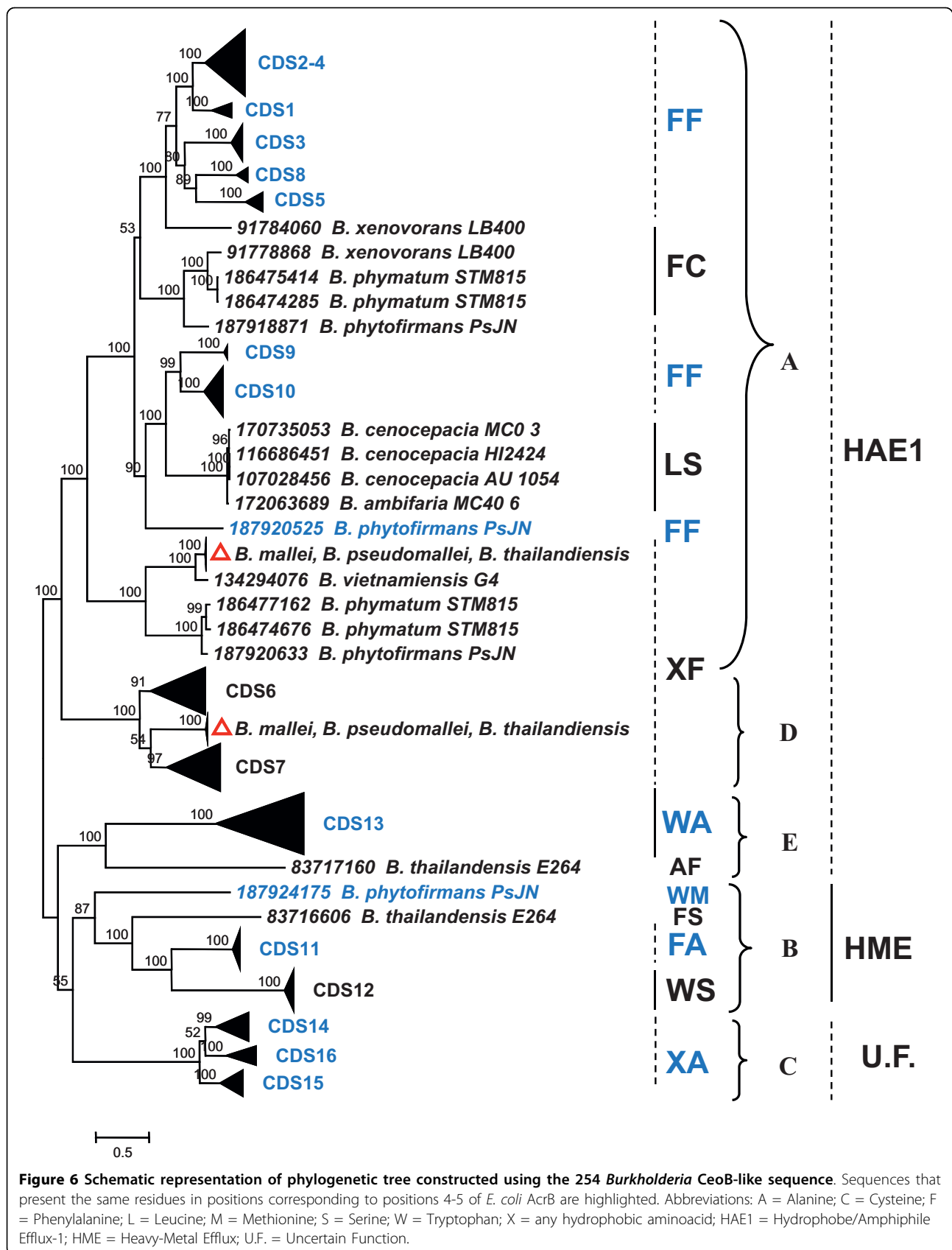
translocation and pumping function of RND proteins [55,56,58]. Some of these residues are highly conserved in all RND proteins, while others are characteristic of HAE1 and HME families.

The multiple alignment of the amino acid sequences of 39 proteins, belonging to HAE1 and HME families, revealed that the motif G403XXXD407XXXXXXE414 (position referred to *P. aeruginosa* MexB) in TMS 4 is highly conserved in both HAE1 and HME [56]. This suggests that these residues may play an important role in proton translocation, a feature shared by all the representatives of the families [56]. We checked for the presence of such residues in the 254 *Burkholderia* sequences and all of them were found in each sequence (yellow residues in Figure 8a). This finding confirms that these residues are very likely essential for the role performed by these proteins.

Five residues were conserved in the HAE1 family [56,58]. Two of them, D407-D408 (position referred to

E. coli AcrB), are located in TMS 4; the other three residues, K940, R971 and T978 (position referred to *E. coli* AcrB), are within or close to TMS 10. As shown in Figure 8b, R971 and T978 are conserved in all sequences, suggesting that they may play an important role for both HAE1 and HME proteins. D407 and D408 are conserved, with the exception of four sequences, in all the proteins that, on the basis of phylogenetic tree, were assigned to the HAE1 family. K940 is conserved in all putative HAE1 sequences, with the exception of one cluster (containing CDS 13 from *B.cenocepacia* J2315), where Lysine is replaced by Arginine. However, mutation study in *E. coli* [56] suggested that in this particular position the side-chain length is not important, and a positive charge is "simply" required.

HME proteins, transporting divalent cations, e.g. *Ralstonia metallidurans* Czca, possess an Aspartic acid residue at position 402 in TMS 4 (position referred to Czca of *R. metallidurans*), in addition to previously



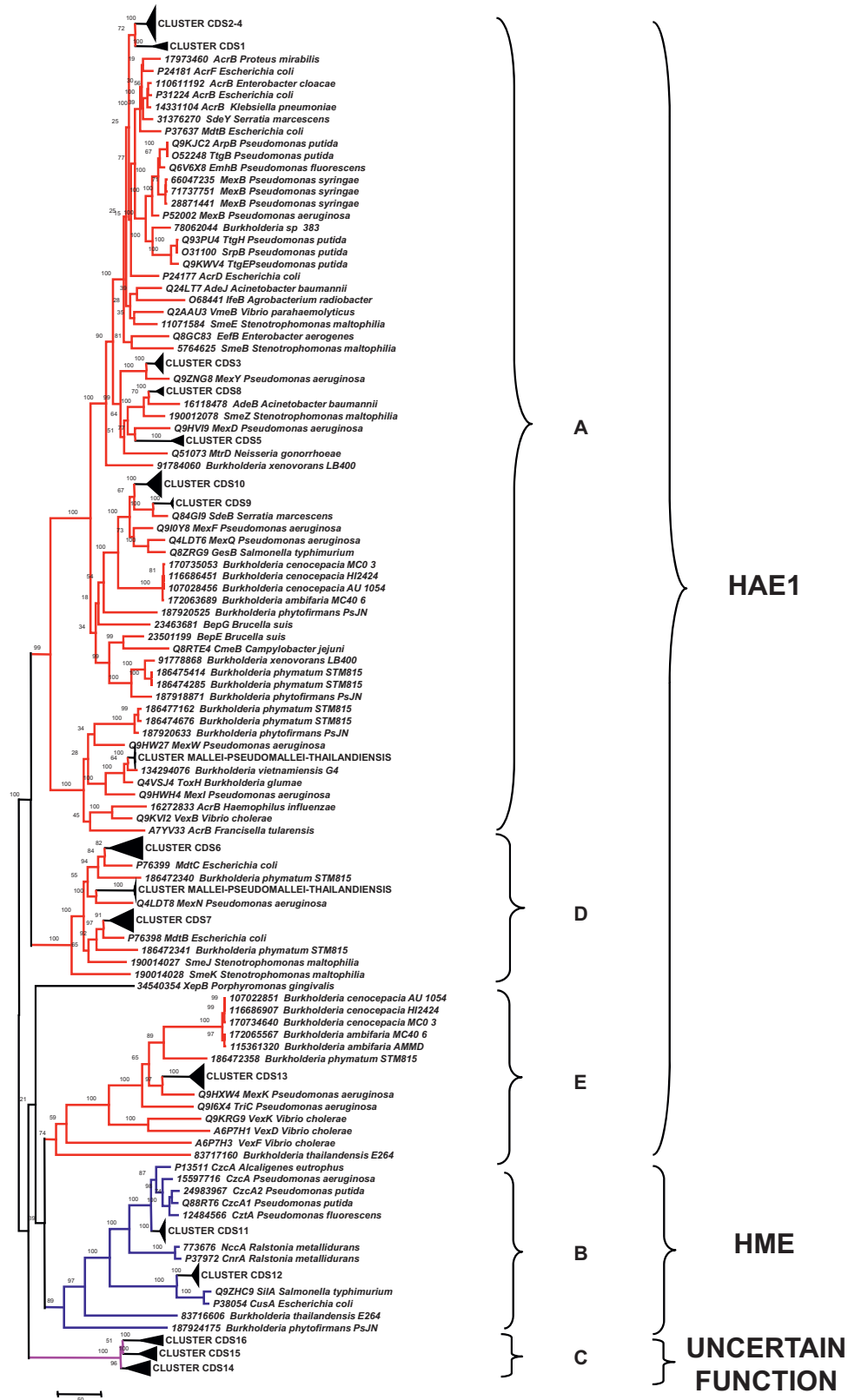


Figure 7 Schematic representation of the phylogenetic tree constructed using the 254 *Burkholderia* CeoB-like sequences plus sequences of characterized proteins.

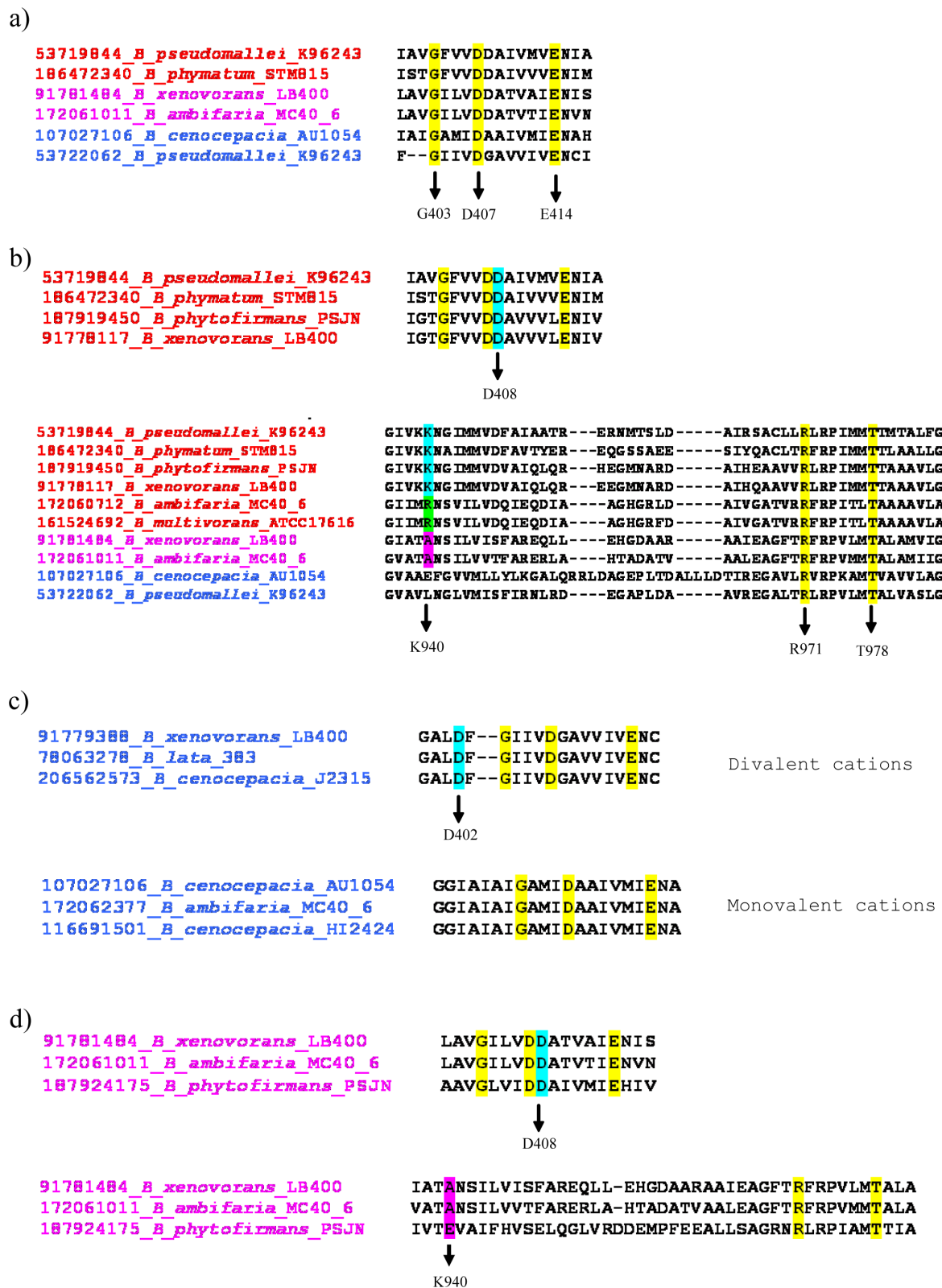


Figure 8 Essential residues for proton translocation in RND proteins. Only some representative proteins for each category were reported. Putative HAE1 proteins are coloured in red, putative HME proteins are coloured in blue and proteins with uncertain function in pink. Residues conserved among different proteins are highlighted.

identified D407 (that, in this kind of proteins, is located at position 408). HME proteins that transport monovalent cations, e.g. *E. coli* CusA, present only D408 and miss D402, which may be explained by a $1\text{H}^+/\text{Ag}^+$ ratio of transport by this system in contrast with a ratio of $2\text{H}^+/1\text{Zn}^{2+}$ for CzcA-like proteins [55]. Figure 8c shows that proteins previously identified as divalent cation transporters, harbour both Aspartic acid residues, whereas proteins identified as monovalent cations transporters, contain only one Aspartic acid (D408).

Lastly, the sequences with unknown function, present the same residues of HAE1 proteins in TMS 4, but miss K940 that is conserved in all HAE1 proteins (Figure 8d).

Thus, the analysis of functional residues of RND proteins confirms that sequences identified in *Burkholderia* spp. are RND proteins, and this is in agreement with phylogenetic analysis data. Indeed, putative HAE1 and HME proteins present residues characteristic of each family, and proteins with uncertain function confirm their apparent ambiguous collocation.

Analysis of residues involved in substrate recognition

The analysis of the amino acid sequences of *E. coli* AcrB (HAE1) and its homologs allowed to identify conserved residues at their N-terminus, including two Phenylalanine residues (FF, positions 4-5 of *E. coli* AcrB) exposed to the cytoplasm [59]. Since Phenylalanine residues located elsewhere in the protein sequence have been postulated to be involved in ligand binding, *Das et al.* suggested that these conserved residues might be involved in cytoplasmic substrate recognition [59].

The analysis of the residues located at these positions in the 254 *Burkholderia* sequences revealed that different clusters exhibited different residues (Figure 6):

- a large cluster of proteins (Cluster A) shows (with the exceptions of some sequences) two Phenylalanines (FF) at both positions;
- another cluster (Cluster D), previously identified as HAE1, presents a hydrophobic amino acid at the first position and a Phenylalanine at the second one (XF);
- the third HAE1 cluster (Cluster E) exhibits a Tryptophan and an Alanine (WA);
- a putative HME cluster for divalent cations (CDS11) (Cluster B) presents a Tryptophan and a Serine (WS);
- a putative HME cluster for monovalent cations (CDS12) (Cluster B) possesses a Phenylalanine and an Alanine (FA);
- the sequence cluster with uncertain function (Cluster C) presents a hydrophobic amino acid at the first position and an Alanine at the second position (XA).

Hence, the whole body of data presented strongly

suggests that the 254 *Burkholderia* sequences are representative of HAE1 and HME families. In particular, HAE1 proteins can be split into three different groups that likely transport different substrates. HME proteins are divided into two different clusters, one for monovalent and one for divalent cation export, respectively. The third protein cluster cannot be assigned to any of the two families.

Interrelationships between number and/or type of CeoB-like proteins and genome size, lifestyle, pathogenicity and taxonomic position

The number of CeoB-like proteins of each *Burkholderia* strain was correlated to the genome size, the lifestyle, the pathogenicity and the taxonomic position in order to assess the presence of some (possible) interrelationships. Data of genome size, lifestyle and pathogenicity were retrieved from NCBI website <http://www.ncbi.nlm.nih.gov/genomes/lproks.cgi>, (Table 3).

Three different categories were considered for lifestyle: strains that live predominantly either in environment (water, soil, rhizosphere etc.), or in a host (plants, animals, humans) and strains that can be found in both environment and host. The average number of proteins in each category is very similar, and standard deviation is very high (2.40 for the first category, 4.93 for the second one and 2.97 for the third one) (Additional File 4). Thus, no apparent relationship between bacterial lifestyle and RND protein number was detected. The same result was obtained considering the number of each type of CeoB-like proteins (HAE1, HME and uncertain function) (Additional File 4).

The relationship with pathogenicity (strains pathogens for plants, animals or humans) was also analysed. Also in this case, no apparent relationship exists with protein number (Additional File 4). The same result was obtained considering the number of each type of CeoB-like proteins (HAE1, HME and uncertain function) (Additional File 4).

In spite of the fact that previous studies suggested that the number of multidrug efflux pumps is proportional to the genome size of a given organism [60], data reported in Figure 9a revealed that in *Burkholderia* genomes only a low correlation between the two parameters exists ($R^2 = 0.6091$). However, when the CeoB-like proteins were split into the three categories, the analysis revealed that the number of HME proteins (blue line, $R^2 = 0.3787$) and of proteins with uncertain function (pink line, $R^2 = 0.4579$), is relatively constant, while the number of HAE1 proteins (red line, $R^2 = 0.6323$) increases in strains with a larger genome (Figure 9b).

In order to assess relationships with taxonomy, the phylogenetic tree reported in Figure 9c was constructed

Table 3 Genome, genome size, habitat and pathogenicity of the 21 *Burkholderia* analysed genomes

Species	Strain	Habitat	Pathogenicity	Genome size (Mpb)	Chromosomes	Plasmids
<i>B. ambifaria</i>	AMMD	E/H	NP	7,57	3	1
	MC40-6	E/H	P	7,60	3	1
<i>B. cenocepacia</i>	HI2424	E/H	P	7,76	3	1
	AU 1054	H	P	7,28	3	-
	J2315	E/H	P	8,07	3	1
	MCO-3	E/H	P	7,90	3	-
<i>B. lata</i>	383	E/H	P	8,69	3	-
<i>B. mallei</i>	NCTC 10247	H	P	5,90	2	-
	NCTC 10229	H	P	5,80	2	-
	SAVP 1	H	P	5,20	2	-
	ATCC 23344	H	P	5,83	2	-
<i>B. multivorans</i>	ATCC 17616	H	P	6,99	3	1
<i>B. phymatum</i>	STM815	H	NP	8,70	2	2
<i>B. phytofirmans</i>	PsJN	E	NP	8,22	2	1
<i>B. pseudomallei</i>	1106a	E	P	7,10	2	-
	668	E	P	7,00	2	-
	1710b	E	P	7,31	2	-
	K96243	E	P	7,30	2	-
<i>B. thailandensis</i>	E264	E	NP	6,72	2	-
<i>B. vietnamiensis</i>	G4	E/H	P	8,40	3	5
<i>B. xenovorans</i>	LB400	E/H	NP	9,80	3	-

Abbreviations: E: environmental; H: host; P: pathogen; NP: Not Pathogen; Mbp: Mega base pair.

using the 16S rRNA gene sequences of each strain; in this tree, the number of proteins for each strain is also reported. A relationship between number of proteins and taxonomy can be found. Indeed strains of the same species and/or strains of related species, possess an identical or very similar number of RND proteins. Thus, the distribution of CeoB-like proteins belonging to the three identified categories [antibiotic transport (HAE1), heavy metal transport (HME) and uncertain function], coded for by each of the 21 *Burkholderia* genomes, was also analyzed.

Data obtained are summarized in Table 2 and Figure 9c and showing that:

- i) proteins with uncertain function are not present in *B. mallei*, *B. pseudomallei* and *B. thailandensis* strains;
- ii) proteins belonging to HME family are not present in *B. phymatum* and *B. phytofirmans*;
- iii) when different strains belonging to the same species possess a different number of RND proteins, this is due to the different number of HAE1 proteins, while proteins with uncertain function and HME maintain the same number in all strains of the same species;
- iv) HAE1 proteins are the most abundant in all analyzed strains.

Evolution of *rnd* encoding genes in *Burkholderia* genus

The analysis of the distribution of HME and HAE1 like coding sequences in the genus *Burkholderia* revealed a high variability in the copy number among the different species (Table 2). Interestingly, all the species branching at the root of the *Burkholderia* reference tree (as assessed by 16S rRNA coding sequences), possess a high number of HME/HAE1-like coding sequences (16 in *B. phymatum* and *B. phytofirmans*, 17 in *B. xenovorans*). Conversely, *B. mallei*, *B. pseudomallei* and *B. thailandensis* strains possess a lower HAE1/HME copy number, ranging from 6 to 11 in *B. mallei* and *B. thailandensis* species, respectively. Lastly, the species belonging to the BCC complex and embedded in the upper monophyletic cluster of Figure 9c, possess a number of HME/HAE1 copies ranging from 11, in *B. vietnamiensis* G4 and *B. ambifaria* AMMD, to 18 in *B. cenocepacia* representatives. In addition to these data, the phylogenetic tree constructed with all the 254 retrieved sequences of the *Burkholderia* genus (Figure 7 and Additional File 3) revealed that the *Burkholderia* species are distributed all over the tree and that the monophyly of the main *Burkholderia* clade (according to the reference phylogeny of Figure 9c) is overall respected, suggesting that the *ceoB*-like sequences did not undergo massive HGT events between different *Burkholderia* species or, if this occurred, it happened in the

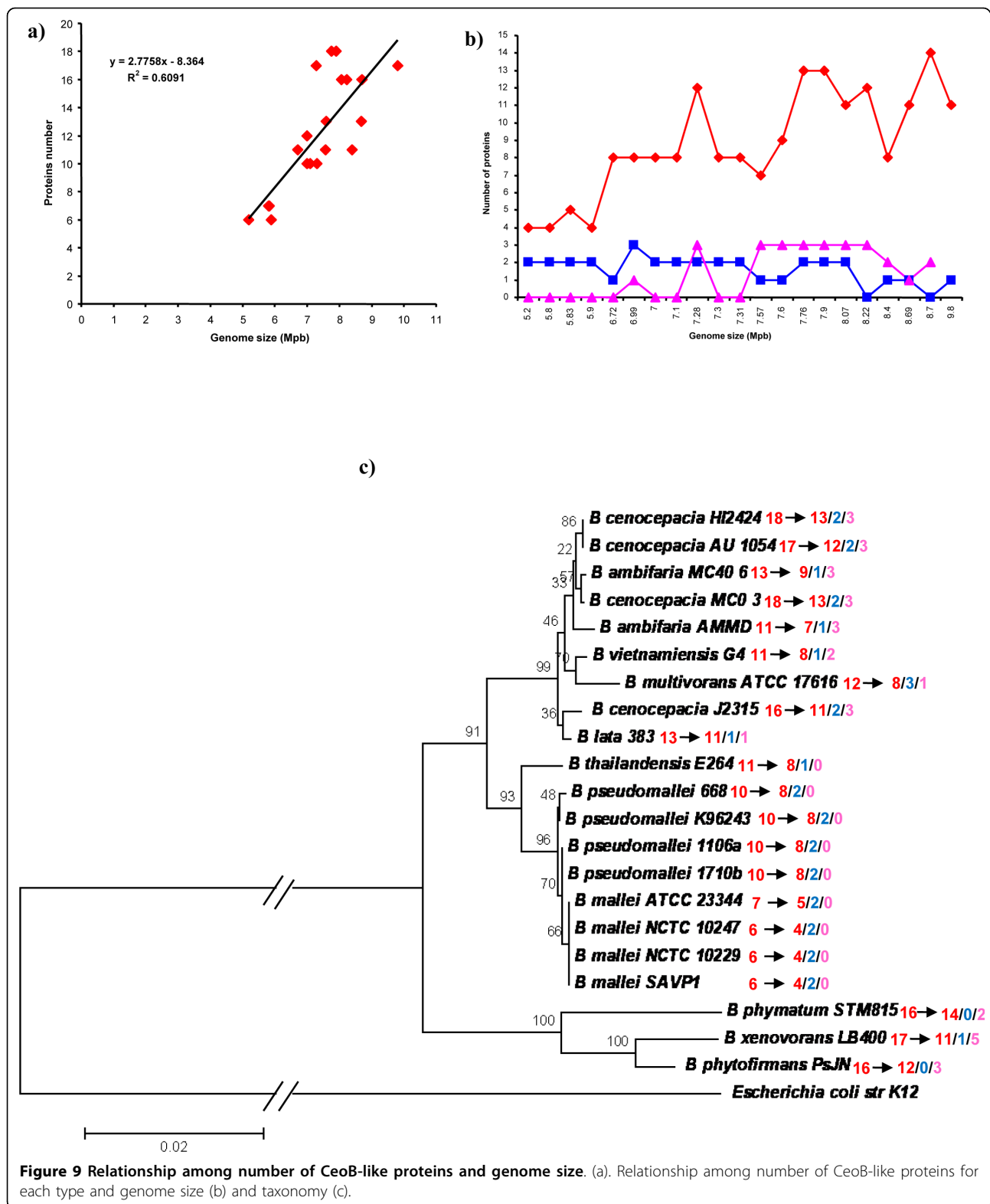


Figure 9 Relationship among number of CeoB-like proteins and genome size. (a). Relationship among number of CeoB-like proteins for each type and genome size (b) and taxonomy (c).

ancestor of *Burkholderia*. However, the possibility that some of these genes might have been exchanged between strains belonging to the same or different *Burkholderia* species and/or between different DNA molecules within the same cytoplasm cannot be *a priori* excluded. Indeed, it is known that bacteria belonging to this genus harbour two-three different chromosomes and some of them are among the largest genome-sized and most versatile bacteria known. Besides, these genomes harbour a relevant number of genes coding for transposases and integrases, (the percentage content of transposases *per* genome and integrases *per* genome ranged from 2.09 in *B. lata* sp.383 to 4.06 in *B. thailandensis* E264 and from 0.08 in *B. ambifaria* MC40-6 to 0.31 in *B. multivorans* ATCC 17616, respectively) suggesting that they might frequently undergo DNA rearrangements that, in turn, might alter their gene structure and/or organization [[61] and references therein]. In addition to this, some of the 21 *Burkholderia* strains harbour one or more large plasmids, which possess genes coding for genetic mobile elements. These elements are responsible for the flow of genes between plasmids and chromosomes inhabiting the same cytoplasm. At the same time, plasmids may also permit the spreading of metabolic traits between cells of the same or different species. Indeed, it has been recognized that HGT is one of the major forces driving the evolution of genes and genomes [62,63]. The analysis of the genomic localization of the 254 *ceoB*-like genes revealed that six of them are located in four different large plasmid molecules harboured by three different strains (Table 4). Three of these genes (two from *B. multivorans* and one from *B. vietnamiensis*) fell in Cluster B (corresponding to HME proteins). In the case of *B. multivorans* one of the two plasmid encoded sequences (gi: 161506614, Table 4) has a paralog in the chromosome. This finding opens the possibility that the two copies (the chromosome one and the plasmid one) might be the result of an internal rearrangement. However, the degree of

sequence identity between them is identical (96-97%) to the one shared with the *B. vietnamiensis* plasmids encoded sequence (gi: 134287672, Table 4). So, it cannot be *a priori* excluded the possibility that the two *B. multivorans* and *B. vietnamiensis* plasmid-borne genes might have been exchanged between the two strains through plasmid-mediated HGT event(s) occurring recently during evolution. A preliminary comparative analysis of the sequences of these two plasmids revealed that very likely they could have exchanged some regions between each other (Maida et al, manuscript in preparation). The other three sequences are harboured by two *B. phymatum* plasmids. Two of them (both from plasmid pBPHY01) code for proteins (Table 4) falling in the group of sequences with uncertain function (Additional File 1) and they do not have any counterpart in the host chromosomes; thus, it is possible that these two sequences might have been moved from the chromosome to pBPHY01. The third one belongs to the HAE1 family and with its closest paralog in the chromosome [share a degree of sequence identity of 94%].

The whole body of data presented here suggests a likely evolutionary model accounting for the evolution of the HME and HAE1 systems in *Burkholderia* genus. According to this model, the ancestor of all the extant *Burkholderia* already possessed a high number of HME/HAE1-like gene copies. Although it is not possible to infer the exact copy number of *CeoB* coding genes in the genome of the *Burkholderia* ancestor, it is possible that this number might have been close to the one exhibited by the species embedded in the cluster at the root of the *Burkholderia* reference tree in Figure 9c.

The high degree of sequence similarity shared by these different copies strongly suggests that they belong to a paralogous gene family, originated from an ancestral *ceoB*-like sequence that underwent many duplication events and existing long before the appearance of the ancestor of *Burkholderia*. On the basis of the available data, it is not possible to infer whether this ancestor gene was organized in operon with an OMP and/or MFP coding gene. However, the finding that most of the *ceoB*-like genes are organized into operons and that (at least) three different operon structures exist in *B. cenocepacia* J2315 genome, might suggest the existence of three different operon organizations in the genome of the *Burkholderia* ancestor. The possible number of each operon is still unknown and their study is beyond the scope of this work. A preliminary analysis performed on other β -proteobacterial subdivision revealed a similar pattern of both RND copy number and operon structure (data not shown). If this idea is correct, then, starting from this ancestral gene pool, multiple events of gene duplication and gene loss would have led to the copy number patterns of the extant *Burkholderia*

Table 4 *Burkholderia* plasmids harbouring *ceoB*-like genes

Strain	Protein	Plasmid		
		Name	Dimension (bp)	RND Cluster
<i>B. multivorans</i> ATCC17616	gi:161506614	pBMUL01	167422	CDS 12
	gi:161506504			CDS 11
<i>B. vietnamiensis</i> G4	gi:134287672	pBVIE02	2656616	CDS 12
<i>B. phymatum</i> STM815	gi:186471278	pBPHY01	1904893	CDS 15
	gi:186471940			CDS 14
	gi:186474676	pBPHY02	595102	-

representatives. Accordingly, those species possessing the lowest number of HME/HAE1 related sequences (*B. mallei* and *B. pseudomallei* strains) are those for which massive genome reduction (and consequently gene loss) has been documented [64]. Regarding the function of ancestral HME/HAE1-like proteins, it is not possible, standing to data presented in this work, to infer whether they were already specialized in recognizing a specific substrate or not. However, it can be mentioned the hypothesis that these ancestral efflux pumps might have been able to recognize different substrates, hence exhibiting low substrate specificity. This is in agreement with the notion that some of the efflux pumps are able to interact with different substrates. This latter observation fits quite well with a recently proposed idea [10] according to which MDR proteins (hence including HME/HAE1-like systems) might be involved in extruding structurally related (non metabolised) substrates out of the cell, thus functioning as safety valves. Duplication events, followed by evolutionary divergence might have concurred in refining their substrate specificity, allowing them to selectively extrude out of the cell a given chemical compound (antibiotics or heavy-metals). This idea represents a further validation (and an extension) of the “patchwork” hypothesis, originally proposed by Jensen [65], to explain the origin and evolution of enzymes involved in metabolic pathways [18,66].

Conclusion

In this work we have performed a comprehensive comparative analysis of the HME and HAE1 efflux systems in *Burkholderia* genus. A total of 254 coding sequences were retrieved from the available *Burkholderia* sequenced genomes and analyzed at different levels, adopting different bioinformatic tools. A deep phylogenetic analysis, in which experimentally characterized sequences were also included, permitted to assign a putative function (i.e. antibiotic resistance, heavy metal efflux) to (up to now) uncharacterized *Burkholderia* sequences. Furthermore, the analysis of conserved residues involved in different functions (substrate recognition, proton translocation) of HME and HAE1 sequences allowed refining motifs previously identified on the basis of a smaller protein dataset. Given the high variability in the number of HAE1 and HME coding sequences found in extant *Burkholderia* species, we tried to correlate both the number and the types (i.e. the transported substrate) with the different characteristics observed in the *Burkholderia* strains (pathogenic lifestyle, genome size, colonized habitat). However, no apparent correlation emerged, suggesting that other forces might be responsible in determining the types and the copy number of HME/HAE1 sequences in the

Burkholderia genus. Remarkably, we observed that only HAE1 proteins are mainly responsible for the different number of proteins observed in strains of the same species. By assuming that the physiological role of these proteins is resistance to one or more antibiotics, this finding, in turn, may suggest that the acquisition of antibiotic resistance might be the main selective pressure driving the expansion of this protein family. On the other hand, these proteins might play other roles relevant to the behaviour of bacteria in their natural ecosystems, so other selective pressure might drive the evolution of this protein family. Data concerning both the distribution and the phylogenetic analysis of the HAE1 and HME in the genus *Burkholderia* allowed depicting a likely evolutionary model accounting for the evolution and spreading of HME and HAE1 systems in *Burkholderia* genus. The occurrence of several species-specific duplication and gene and/or operon loss events finally led to the extant pattern of copy number/type observed in modern-day *Burkholderia*.

It would be interesting to individuate specific residues directly involved in substrate binding. Some data concerning this issue have been obtained studying *E. coli* AcrB protein [26,67-71]. However, these experiments revealed the existence of a set of residues possibly involved in substrate binding, but none of them appeared to be *per se* essential for substrate binding [26,67-71]. A preliminary analysis of the overall *Burkholderia* sequences dataset did not reveal a strong conservation of the same key residues found in the *E. coli* AcrB sequences (data not shown). At least two different explanations can be proposed for this scenario: i) the first refers to the fact that the differences observed within *E. coli* AcrB and *Burkholderia* AcrB-like sequences might be due to the phylogenetic distance existing between them, thus not reflecting differences in the mechanism of substrate binding/recognition of the corresponding transporters. The availability of similar experimental data in a *Burkholderia* cellular background will provide important insights about this issue; ii) the second one takes into account the possibility that the correct substrate binding might rely on a set of (interchangeable) residues rather than on single specific position.

Lastly, the whole data presented in this work may serve as a basis for future experimental tests, focused especially on HAE1 proteins, aimed at the identification of novel targets in antimicrobial therapy against *Burkholderia* species.

Methods

Sequence retrieval

Amino acid sequences from the 21 completely sequenced genomes of strains belonging to the genus

Burkholderia, available on 1st May 2009, were retrieved from GenBank database <http://www.ncbi.nlm.nih.gov> (Table 3). BLAST [72] probing of database was performed with the BLASTP option of this program using default parameters. Only those sequences retrieved at an E-value below the 0.05 threshold were taken into account. 16S rRNA gene nucleotide sequences were retrieved from Ribosomal Database Project [http://rdp.cme.msu.edu/\[73\]](http://rdp.cme.msu.edu/[73]).

Sequence alignment

The ClustalW [47] program in the BioEdit [74] package and the Muscle program [75] were used to perform pairwise and multiple amino acid sequence alignments. Alignments were manually checked and mis-aligned regions were removed.

Phylogenetic analysis

Neighbor-Joining (NJ) phylogenetic trees were obtained with Mega 4 software [76], complete deletion option and 1000 bootstraps replicates. Maximum Likelihood phylogenetics trees were constructed using Phym1 [77], with a WAG model of amino acid substitution, including a gamma function with 6 categories to take into account differences in evolutionary rates at sites. Statistical support at nodes was obtained by non-parametric bootstrapping on 1000 re-sampled datasets by using Phym1.

Hydropathy plot

Hydropathy plots were obtained on ProtScale website <http://www.expasy.ch/tools/protscale.html>[46] using Kyte and Doolittle scale [45].

Residues conservation

Analysis of conservation of amino acid residues was performed using the Weblogo application <http://weblogo.berkeley.edu/> using default parameters [78].

Additional File 1: Phylogenetic tree. Phylogenetic tree constructed using the 254 *Burkholderia* CeoB-like sequences

Additional File 2: Table of characterized RND proteins. Table of 62 characterized RND proteins and their relative substrate

Additional File 3: Phylogenetic tree. Phylogenetic tree constructed using the 254 *Burkholderia* CeoB-like sequences plus sequences of characterized proteins.

Additional File 4: Relationship between RND proteins and lifestyle and pathogenicity. Relationship between RND proteins and lifestyle and pathogenicity

Abbreviations

APPE: Aryl Polyene Pigment Exporter; BCC: *Burkholderia cepacia* complex; CF: Cystic fibrosis; E: Environmental; EST: Eukaryotic (putative) Sterol transporter; H:

Host; HAE-1: Hydrophobe Amphiphile Efflux-1; HAE-2: Hydrophobe-Amphiphile Efflux-2; HAE-3: Hydrophobe-Amphiphile Efflux-3; HGT: Horizontal Gene Transfer; HME: Heavy-Metal Efflux; Mbp: Mega Base Pair; MFP: Membrane Fusion Protein; NC: Not classified; NFE: putative Nodulation Factor Exporter; NJ: Neighbor-Joining; OMP: Outer-Membrane Protein; P: Pathogen; RND: Resistance-Nodulation-Cell Division; SecDF: Secretion System DF; TCDB: Transport Classification Database; TMS: TransMembrane Spanner.

Acknowledgements

This work was supported by Italian Cystic Fibrosis Foundation (projects 9#2003, 10#2006, and 15#2009) and by Ente Cassa di Risparmio di Firenze (project 2003/1034).

We are very grateful to three anonymous reviewers for their helpful comments and suggestions in improving the manuscript.

Author details

¹Lab. of Molecular and Microbial Evolution, Dep. of Evolutionary Biology, University of Florence, Via Romana 17-19, 50125 Firenze, Italy. ²Dep. of Genetics and Microbiology, University of Pavia, Via Ferrata 1, 27100 Pavia, Italy.

Authors' contributions

EP, MF, RF conceived the study. EP and MF performed the analyses. All authors discussed data and drafted the manuscript. All authors read and approved the final manuscript.

Received: 18 September 2009 Accepted: 3 June 2010

Published: 3 June 2010

References

1. Compant S, Nowak J, Coenye T, Clement C, Ait Barka E: **Diversity and occurrence of *Burkholderia* spp. in the natural environment.** *FEMS Microbiol Rev* 2008, **32**(4):607-626.
2. Coenye T, Vandamme P: **Diversity and significance of *Burkholderia* species occupying diverse ecological niches.** *Environ Microbiol* 2003, **5**(9):719-729.
3. Vanlaere E, Lipuma JJ, Baldwin A, Henry D, De Brandt E, Mahenthalingam E, Speert D, Dowson C, Vandamme P: ***Burkholderia latens* sp. nov., *Burkholderia diffusa* sp. nov., *Burkholderia arboris* sp. nov., *Burkholderia seminalis* sp. nov. and *Burkholderia metallica* sp. nov., novel species within the *Burkholderia cepacia* complex.** *Int J Syst Evol Microbiol* 2008, **58**(Pt 7):1580-1590.
4. Vanlaere E, Baldwin A, Gevers D, Henry D, De Brandt E, Lipuma JJ, Mahenthalingam E, Speert DP, Dowson C, Vandamme P: **Taxon K, a complex within the *Burkholderia cepacia* complex, comprises at least two novel species, *Burkholderia contaminans* sp. nov. and *Burkholderia lata* sp. nov.** *Int J Syst Evol Microbiol* 2009, **59**(Pt 1):102-111.
5. Govan JR, Brown AR, Jones AM: **Evolving epidemiology of *Pseudomonas aeruginosa* and the *Burkholderia cepacia* complex in cystic fibrosis lung infection.** *Future Microbiol* 2007, **2**:153-164.
6. Nikaido H: **Preventing drug access to targets: cell surface permeability barriers and active efflux in bacteria.** *Semin Cell Dev Biol* 2001, **12**(3):215-223.
7. Ryan BM, Dougherty TJ, Beaulieu D, Chuang J, Dougherty BA, Barrett JF: **Efflux in bacteria: what do we really know about it?** *Expert Opin Investig Drugs* 2001, **10**(8):1409-1422.
8. Martinez JL, Sanchez MB, Martinez-Solano L, Hernandez A, Garmendia L, Fajardo A, Alvarez-Ortega C: **Functional role of bacterial multidrug efflux pumps in microbial natural ecosystems.** *FEMS Microbiol Rev* 2009, **33**(2):430-449.
9. Saier MH Jr, Paulsen IT, Sliwinski MK, Pao SS, Skurray RA, Nikaido H: **Evolutionary origins of multidrug and drug-specific efflux pumps in bacteria.** *FASEB J* 1998, **12**(3):265-274.
10. Danchin A: **Cells need safety valves.** *Bioessays* 2009, **31**(7):769-773.
11. Paulsen IT, Brown MH, Skurray RA: **Proton-dependent multidrug efflux systems.** *Microbiol Rev* 1996, **60**(4):575-608.
12. Poole K: **Efflux pumps as antimicrobial resistance mechanisms.** *Ann Med* 2007, **39**(3):162-176.
13. Saier MH Jr, Paulsen IT: **Phylogeny of multidrug transporters.** *Semin Cell Dev Biol* 2001, **12**(3):205-213.

14. Goel AK, Rajagopal L, Nagesh N, Sonti RV: **Genetic locus encoding functions involved in biosynthesis and outer membrane localization of xanthomonadin in *Xanthomonas oryzae* pv. *oryzae*.** *J Bacteriol* 2002, **184**(13):3539-3548.
15. Poole K, Krebs K, McNally C, Neshat S: **Multiple antibiotic resistance in *Pseudomonas aeruginosa*: evidence for involvement of an efflux operon.** *J Bacteriol* 1993, **175**(22):7363-7372.
16. Ma D, Cook DN, Alberti M, Pon NG, Nikaido H, Hearst JE: **Molecular cloning and characterization of *acrA* and *acrE* genes of *Escherichia coli*.** *J Bacteriol* 1993, **175**(19):6299-6313.
17. Aires JR, Kohler T, Nikaido H, Plesiat P: **Involvement of an active efflux system in the natural resistance of *Pseudomonas aeruginosa* to aminoglycosides.** *Antimicrob Agents Chemother* 1999, **43**(11):2624-2628.
18. Fani R, Fondi M: **Origin and evolution of metabolic pathways.** *Physics of Life Reviews* 2009, **6**:23-52.
19. Saier MH Jr, Tam R, Reizer A, Reizer J: **Two novel families of bacterial membrane proteins concerned with nodulation, cell division and transport.** *Mol Microbiol* 1994, **11**(5):841-847.
20. Murakami S, Nakashima R, Yamashita E, Yamaguchi A: **Crystal structure of bacterial multidrug efflux transporter AcrB.** *Nature* 2002, **419**(6907):587-593.
21. Higgins MK, Bokma E, Koronakis E, Hughes C, Koronakis V: **Structure of the periplasmic component of a bacterial drug efflux pump.** *Proc Natl Acad Sci USA* 2004, **101**(27):9994-9999.
22. Koronakis V, Sharrif A, Koronakis E, Luisi B, Hughes C: **Crystal structure of the bacterial membrane protein TolC central to multidrug efflux and protein export.** *Nature* 2000, **405**(6789):914-919.
23. Akama H, Kanemaki M, Yoshimura M, Tsukihara T, Kashiwagi T, Yoneyama H, Narita S, Nakagawa A, Nakae T: **Crystal structure of the drug discharge outer membrane protein, OprM, of *Pseudomonas aeruginosa*: dual modes of membrane anchoring and occluded cavity end.** *J Biol Chem* 2004, **279**(51):52816-52819.
24. Akama H, Matsuura T, Kashiwagi S, Yoneyama H, Narita S, Tsukihara T, Nakagawa A, Nakae T: **Crystal structure of the membrane fusion protein, MexA, of the multidrug transporter in *Pseudomonas aeruginosa*.** *J Biol Chem* 2004, **279**(25):25939-25942.
25. Sennhauser G, Bukowska MA, Briand C, Grutter MG: **Crystal structure of the multidrug exporter MexB from *Pseudomonas aeruginosa*.** *J Mol Biol* 2009, **389**(1):134-145.
26. Murakami S, Nakashima R, Yamashita E, Matsumoto T, Yamaguchi A: **Crystal structures of a multidrug transporter reveal a functionally rotating mechanism.** *Nature* 2006, **443**(7108):173-179.
27. Seeger MA, Schiefner A, Eicher T, Verrey F, Diederichs K, Pos KM: **Structural asymmetry of AcrB trimer suggests a peristaltic pump mechanism.** *Science* 2006, **313**(5791):1295-1298.
28. Mahenthalingam E, Urban TA, Goldberg JB: **The multifarious, multireplicon *Burkholderia cepacia* complex.** *Nat Rev Microbiol* 2005, **3**(2):144-156.
29. Dance DA, Wuthiekanun V, Chaowagul W, White NJ: **The antimicrobial susceptibility of *Pseudomonas pseudomallei*. Emergence of resistance in vitro and during treatment.** *J Antimicrob Chemother* 1989, **24**(3):295-309.
30. Thibault FM, Hernandez E, Vidal DR, Girardet M, Cavallo JD: **Antibiotic susceptibility of 65 isolates of *Burkholderia pseudomallei* and *Burkholderia mallei* to 35 antimicrobial agents.** *J Antimicrob Chemother* 2004, **54**(6):1134-1138.
31. Gugliera P, Pasca MR, De Rossi E, Buroni S, Arrigo P, Manina G, Riccardi G: **Efflux pump genes of the resistance-nodulation-division family in *Burkholderia cenocepacia* genome.** *BMC Microbiol* 2006, **6**:66.
32. Holden MT, Seth-Smith HM, Crossman LC, Sebahia M, Bentley SD, Cerdeno-Tarraga AM, Thomson NR, Bason N, Quail MA, Sharp S, et al: **The genome of *Burkholderia cenocepacia* J2315, an epidemic pathogen of cystic fibrosis patients.** *J Bacteriol* 2009, **191**(1):261-277.
33. Burns JL, Wadsworth CD, Barry JJ, Goodall CP: **Nucleotide sequence analysis of a gene from *Burkholderia* (*Pseudomonas*) *cepacia* encoding an outer membrane lipoprotein involved in multiple antibiotic resistance.** *Antimicrob Agents Chemother* 1996, **40**(2):307-313.
34. Nair BM, Cheung KJ Jr, Griffith A, Burns JL: **Salicylate induces an antibiotic efflux pump in *Burkholderia cepacia* complex genomovar III (*B. cenocepacia*).** *J Clin Invest* 2004, **113**(3):464-473.
35. Kumar A, Mayo M, Trunck LA, Cheng AC, Currie BJ, Schweizer HP: **Expression of resistance-nodulation-cell-division efflux pumps in commonly used *Burkholderia pseudomallei* strains and clinical isolates from northern Australia.** *Trans R Soc Trop Med Hyg* 2008, **102**(Suppl 1):S145-151.
36. Moore RA, DeShazer D, Reckseidler S, Weissman A, Woods DE: **Efflux-mediated aminoglycoside and macrolide resistance in *Burkholderia pseudomallei*.** *Antimicrob Agents Chemother* 1999, **43**(3):465-470.
37. Chan YY, Tan TM, Ong YM, Chua KL: **BpeAB-OprB, a multidrug efflux pump in *Burkholderia pseudomallei*.** *Antimicrob Agents Chemother* 2004, **48**(4):1128-1135.
38. Kumar A, Chua KL, Schweizer HP: **Method for regulated expression of single-copy efflux pump genes in a surrogate *Pseudomonas aeruginosa* strain: identification of the BpeEF-OprC chloramphenicol and trimethoprim efflux pump of *Burkholderia pseudomallei* 1026b.** *Antimicrob Agents Chemother* 2006, **50**(10):3460-3463.
39. Chan YY, Chua KL: **The *Burkholderia pseudomallei* BpeAB-OprB efflux pump: expression and impact on quorum sensing and virulence.** *J Bacteriol* 2005, **187**(14):4707-4719.
40. Chan YY, Bian HS, Tan TM, Mattmann ME, Geske GD, Igarashi J, Hatano T, Suga H, Blackwell HE, Chua KL: **Control of quorum sensing by a *Burkholderia pseudomallei* multidrug efflux pump.** *J Bacteriol* 2007, **189**(11):4320-4324.
41. Hiller NL, Janto B, Hogg JS, Boissy R, Yu S, Powell E, Keefe R, Ehrlich NE, Shen K, Hayes J, et al: **Comparative genomic analyses of seventeen *Streptococcus pneumoniae* strains: insights into the pneumococcal supragenome.** *J Bacteriol* 2007, **189**(22):8186-8195.
42. Brochet M, Couve E, Glaser P, Guedon G, Payot S: **Integrative conjugative elements and related elements are major contributors to the genome diversity of *Streptococcus agalactiae*.** *J Bacteriol* 2008, **190**(20):6913-6917.
43. Touchon M, Hoede C, Tenaillon O, Barbe V, Baeriswyl S, Bidet P, Bingen E, Bonacorsi S, Bouchier C, Bouvet O, et al: **Organised genome dynamics in the *Escherichia coli* species results in highly diverse adaptive paths.** *PLoS Genet* 2009, **5**(1):e1000344.
44. Putman M, van Veen HW, Konings WN: **Molecular properties of bacterial multidrug transporters.** *Microbiol Mol Biol Rev* 2000, **64**(4):672-693.
45. Kyte J, Doolittle RF: **A simple method for displaying the hydropathic character of a protein.** *J Mol Biol* 1982, **157**(1):105-132.
46. Gasteiger E, Hoogland C, Gattiker A, Duvaud S, Wilkins MR, Appel RD, Bairoch A: **Protein Identification and Analysis Tools on the ExpASY Server.** *The Proteomics Protocols Handbook*, Humana Press/John M Walker 2005, 571-607.
47. Thompson JD, Higgins DG, Gibson TJ: **CLUSTAL W: improving the sensitivity of progressive multiple sequence alignment through sequence weighting, position-specific gap penalties and weight matrix choice.** *Nucleic Acids Res* 1994, **22**(22):4673-4680.
48. Tseng TT, Gratwick KS, Kollman J, Park D, Nies DH, Goffeau A, Saier MH Jr: **The RND permease superfamily: an ancient, ubiquitous and diverse family that includes human disease and development proteins.** *J Mol Microbiol Biotechnol* 1999, **1**(1):107-125.
49. Eda S, Yoneyama H, Nakae T: **Function of the MexB efflux-transporter divided into two halves.** *Biochemistry* 2003, **42**(23):7238-7244.
50. Elkins CA, Nikaido H: **Substrate specificity of the RND-type multidrug efflux pumps AcrB and AcrD of *Escherichia coli* is determined predominantly by two large periplasmic loops.** *J Bacteriol* 2002, **184**(23):6490-6498.
51. Franke S, Grass G, Rensing C, Nies DH: **Molecular analysis of the copper-transporting efflux system CusCFBA of *Escherichia coli*.** *J Bacteriol* 2003, **185**(13):3804-3812.
52. Mao W, Warren MS, Black DS, Satou T, Murata T, Nishino T, Gotoh N, Lomovskaya O: **On the mechanism of substrate specificity by resistance nodulation division (RND)-type multidrug resistance pumps: the large periplasmic loops of MexD from *Pseudomonas aeruginosa* are involved in substrate recognition.** *Mol Microbiol* 2002, **46**(3):889-901.
53. Middlemiss JK, Poole K: **Differential impact of MexB mutations on substrate selectivity of the MexAB-OprM multidrug efflux pump of *Pseudomonas aeruginosa*.** *J Bacteriol* 2004, **186**(5):1258-1269.
54. Tikhonova EB, Wang Q, Zgurskaya HI: **Chimeric analysis of the multicomponent multidrug efflux transporters from gram-negative bacteria.** *J Bacteriol* 2002, **184**(23):6499-6507.
55. Goldberg M, Pribyl T, Juhnke S, Nies DH: **Energetics and topology of CzcA, a cation/proton antiporter of the resistance-nodulation-cell division protein family.** *J Biol Chem* 1999, **274**(37):26065-26070.

56. Guan L, Nakae T: **Identification of essential charged residues in transmembrane segments of the multidrug transporter MexB of *Pseudomonas aeruginosa*.** *J Bacteriol* 2001, **183**(5):1734-1739.
57. Saier MH Jr, Tran CV, Barabote RD: **TCDB: the Transporter Classification Database for membrane transport protein analyses and information.** *Nucleic Acids Res* 2006, **34**(Database issue):D181-186.
58. Takatsuka Y, Nikaido H: **Threonine-978 in the transmembrane segment of the multidrug efflux pump AcrB of *Escherichia coli* is crucial for drug transport as a probable component of the proton relay network.** *J Bacteriol* 2006, **188**(20):7284-7289.
59. Das D, Xu QS, Lee JY, Ankoudinova I, Huang C, Lou Y, DeGiovanni A, Kim R, Kim SH: **Crystal structure of the multidrug efflux transporter AcrB at 3.1 Å resolution reveals the N-terminal region with conserved amino acids.** *J Struct Biol* 2007, **158**(3):494-502.
60. Ren Q, Paulsen IT: **Comparative analyses of fundamental differences in membrane transport capabilities in prokaryotes and eukaryotes.** *PLoS Comput Biol* 2005, **1**(3):e27.
61. Papaleo MC, Russo E, Fondi M, Emiliani G, Frandi A, Brilli M, Pastorelli R, Fani R: **Structural, evolutionary and genetic analysis of the histidine biosynthetic "Core" in the genus *Burkholderia*.** *Gene* 2009, **448**(1):16-28.
62. Vanechoutte M, Fani R: **From the primordial soup to the latest universal common ancestor.** *Res Microbiol* 2009, **160**(7):437-440.
63. Poole AM: **Horizontal gene transfer and the earliest stages of the evolution of life.** *Res Microbiol* 2009, **160**(7):473-480.
64. Moore RA, Reckseidler-Zenteno S, Kim H, Nierman W, Yu Y, Tuanyok A, Warawa J, DeShazer D, Woods DE: **Contribution of gene loss to the pathogenic evolution of *Burkholderia pseudomallei* and *Burkholderia mallei*.** *Infect Immun* 2004, **72**(7):4172-4187.
65. Jensen RA: **Enzyme recruitment in evolution of new function.** *Annu Rev Microbiol* 1976, **30**:409-425.
66. Fondi M, Emiliani G, Fani R: **Origin and evolution of operons and metabolic pathways.** *Res Microbiol* 2009, **160**(7):502-512.
67. Yu EW, McDermott G, Zgurskaya HI, Nikaido H, Koshland DE Jr: **Structural basis of multiple drug-binding capacity of the AcrB multidrug efflux pump.** *Science* 2003, **300**(5621):976-980.
68. Yu EW, Aires JR, Nikaido H: **AcrB multidrug efflux pump of *Escherichia coli*: composite substrate-binding cavity of exceptional flexibility generates its extremely wide substrate specificity.** *J Bacteriol* 2003, **185**(19):5657-5664.
69. Yu EW, Aires JR, McDermott G, Nikaido H: **A periplasmic drug-binding site of the AcrB multidrug efflux pump: a crystallographic and site-directed mutagenesis study.** *J Bacteriol* 2005, **187**(19):6804-6815.
70. Bohnert JA, Schuster S, Seeger MA, Fahnrich E, Pos KM, Kern WV: **Site-directed mutagenesis reveals putative substrate binding residues in the *Escherichia coli* RND efflux pump AcrB.** *J Bacteriol* 2008, **190**(24):8225-8229.
71. Nikaido H, Takatsuka Y: **Mechanisms of RND multidrug efflux pumps.** *Biochim Biophys Acta* 2009, **1794**(5):769-781.
72. Altschul SF, Madden TL, Schaffer AA, Zhang J, Zhang Z, Miller W, Lipman DJ: **Gapped BLAST and PSI-BLAST: a new generation of protein database search programs.** *Nucleic Acids Res* 1997, **25**(17):3389-3402.
73. Cole JR, Wang Q, Cardenas E, Fish J, Chai B, Farris RJ, Kulam-Syed-Mohideen AS, McGarrell DM, Marsh T, Garrity GM, et al: **The Ribosomal Database Project: improved alignments and new tools for rRNA analysis.** *Nucleic Acids Res* 2009, **37**(Database issue):D141-145.
74. Hall TA: **BioEdit: a user-friendly biological sequence alignment editor and analysis program for Windows 95/98/NT.** *Nucl Acids Symp Ser* 1999, **41**:95-98.
75. Edgar RC: **MUSCLE: multiple sequence alignment with high accuracy and high throughput.** *Nucleic Acids Res* 2004, **32**(5):1792-1797.
76. Tamura K, Dudley J, Nei M, Kumar S: **MEGA4: Molecular Evolutionary Genetics Analysis (MEGA) software version 4.0.** *Mol Biol Evol* 2007, **24**(8):1596-1599.
77. Guindon S, Gascuel O: **A simple, fast, and accurate algorithm to estimate large phylogenies by maximum likelihood.** *Syst Biol* 2003, **52**(5):696-704.
78. Crooks GE, Hon G, Chandonia JM, Brenner SE: **WebLogo: a sequence logo generator.** *Genome Res* 2004, **14**(6):1188-1190.

doi:10.1186/1471-2148-10-164

Cite this article as: Perrin et al.: Exploring the HME and HAE1 efflux systems in the genus *Burkholderia*. *BMC Evolutionary Biology* 2010 **10**:164.

Submit your next manuscript to BioMed Central and take full advantage of:

- Convenient online submission
- Thorough peer review
- No space constraints or color figure charges
- Immediate publication on acceptance
- Inclusion in PubMed, CAS, Scopus and Google Scholar
- Research which is freely available for redistribution

Submit your manuscript at
www.biomedcentral.com/submit

