



Published in final edited form as:

Mucosal Immunol. 2017 May ; 10(3): 705–715. doi:10.1038/mi.2016.90.

GM-CSF produced by the airway epithelium is required for sensitization to cockroach allergen

Alyssa Sheih^{1,2}, William C. Parks³, and Steven F. Ziegler^{1,4,#}

¹Immunology Program, Benaroya Research Institute at Virginia Mason, Seattle, WA 98101

²Molecular and Cellular Biology Program, University of Washington, Seattle, WA 98195

³Department of Medicine (Pulmonary and Critical Care Medicine, Cedars-Sinai Medical Center, Los Angeles, CA 90048

⁴Department of Immunology, University of Washington School of Medicine, Seattle, WA 98195

Abstract

Airway epithelial cells are among the first to encounter inhaled allergens and can initiate allergic responses by producing pro-Th2 innate cytokines. In this study, we investigated the role of epithelial-derived cytokines in sensitization to a clinically relevant allergen, cockroach allergen (CRA). Among the epithelial-derived cytokines, GM-CSF played a central role in the initiation of Th2 allergic responses to CRA. We show that initial exposure to CRA directly activated airway epithelial cells through a TLR4-MyD88-dependent pathway and MyD88 signaling in epithelial cells induced upregulation of GM-CSF during sensitization. Epithelial-derived GM-CSF was required for allergic sensitization and selectively restored Th2 responses in the absence of MyD88. Thus, we demonstrate that epithelial-derived GM-CSF is a critical early signal during allergic sensitization to CRA.

Introduction

Allergic asthma is a chronic lung disease driven by an immune response against allergens, which results in reversible airflow obstruction, mucus hypersecretion, and the recruitment of eosinophils and Th2 cells to the airway¹. Airway epithelial cells are among the first to detect the presence of inhaled allergens through pattern recognition receptors (PRRs)², and in response to allergens, produce cytokines that can initiate type 2 responses^{3,4}. Although transgenic overexpression of epithelial-derived cytokines such as thymic stromal lymphopoietin (TSLP), IL-25, IL-33, and GM-CSF are each sufficient to induce a Th2

Users may view, print, copy, and download text and data-mine the content in such documents, for the purposes of academic research, subject always to the full Conditions of use:http://www.nature.com/authors/editorial_policies/license.html#terms

#Corresponding Author: Steven F. Ziegler, Benaroya Research Institute at Virginia Mason, 1201 Ninth Avenue, Seattle WA 98101, sziegler@benaroyaresearch.org, Telephone: 206-287-5657, Fax: 206-342-6572.

Author Contribution

A.S., W.C.P., and S.F.Z. designed experiments. A.S. performed all experiments. A.S., W.C.P., and S.F.Z. wrote the manuscript.

Disclosure

The authors declared no conflict of interest.

allergic response against an antigen⁵⁻⁸, mounting evidence suggests that the requirement for these cytokines in allergic responses to various allergens is distinct.

TSLP is induced in a large number of allergic responses⁹⁻¹⁴ and is required in ragweed-driven allergic inflammation. Yet TSLP has been shown to be dispensable for allergic sensitization to house dust mite (HDM), in which IL-33 appears to play a more central role^{10,15}. GM-CSF, which can be produced by a number of different cell types including epithelial cells, has also emerged as an important regulator of allergic inflammation¹⁵. Patients with asthma have increased levels of GM-CSF expression; in mice, transgenic overexpression of GM-CSF serves as a potent adjuvant that permits sensitization to ovalbumin⁸ and sub-threshold levels of HDM¹⁶. Antibody blockade of GM-CSF during sensitization reduces allergic inflammation to HDM and *Blomia tropicalis* mite allergen^{15,17,18}, suggesting an important role for GM-CSF early in the allergic response.

In this study, we focus on cockroach allergen (CRA), an important allergen associated with allergic asthma and asthma morbidity, especially in low-income urban populations¹⁹⁻²¹. CRA can activate protease-activated receptor 2 (PAR2)²²⁻²⁴ and toll-like receptors (TLRs)²⁵ to induce the release of inflammatory cytokines. However, TSLP is not required for allergic responses to CRA²⁶, while IL-25 is only required for chronic allergic responses to CRA²⁷. Our studies demonstrate that MyD88-dependent induction of GM-CSF in epithelial cells was required for sensitization to inhaled CRA. Epithelial-derived GM-CSF specifically promoted Th2-mediated allergic responses, but not Th17-associated neutrophilia, downstream of the MyD88 signaling pathway. Interestingly, while induction of GM-CSF has been shown to occur downstream of IL-1 in response to HDM, CRA-induced GM-CSF was IL-1 independent. In contrast to the requirements for IL-33 in HDM-induced asthma, IL-33 only played a minimal role in response to CRA. Overall, our study demonstrates that epithelial-derived GM-CSF is a key mediator of sensitization to CRA, but that induction of GM-CSF by CRA is mediated by pathways distinct from HDM.

Results

Intranasal sensitization and challenge with CRA results in airway inflammation with features of allergic asthma

We first established a model of CRA-mediated allergic airway disease in which mice were sensitized and challenged with the allergen in the absence of an adjuvant (Fig. 1a). Following CRA challenge, mice developed airway inflammation with eosinophils representing the main infiltrating cell type (Fig. 1b). There was also a significant increase in the recruitment of CD4 T cells, DCs, and neutrophils to the airway (Fig. 1b). Consistent with an allergic response, histological analysis of lung sections showed extensive goblet cell metaplasia and mucus production (Fig. 1c). In addition, we detected elevated levels of CRA-specific IgE antibodies in the serum (Fig. 1d) as well as increased lung mRNA expression of TH2 and TH17 cytokines, with no effect on IFN γ (Fig. 1e). Depletion of CD4 T cells prior to sensitization and challenge protected mice from the development of allergic inflammation in response to CRA (Supplementary Fig. 1). These results show that sensitization and challenge with CRA leads to the development of airway inflammation that closely resembles allergic asthma.

MyD88 is required for the development of allergic airway inflammation to CRA

A previous study showed that MyD88 is required in bone marrow-derived DCs for production of IL-6 and IL-23 after exposure to CRA, but it is unknown if MyD88 is required for allergic responses to CRA²⁵. *Myd88*^{-/-} mice sensitized and challenged with CRA developed markedly less airway inflammation compared to wild type (WT) mice; the number of eosinophils, neutrophils, and CD4 T cells were strongly reduced in the BAL (Fig. 2a). Histological analysis confirmed this reduction in immune cell infiltrates and revealed less mucus production in the lung (Fig. 2b). Furthermore, both T_H2 and T_H17 cytokine levels were significantly lower in the BAL fluid of *Myd88*^{-/-} mice (Fig. 2c). These results reveal an important role for the MyD88 signaling pathway in the development of allergic airway inflammation to CRA.

Next, we investigated the role of individual TLRs in sensing CRA and found no significant differences in airway eosinophilia between WT and *Tlr2*^{-/-} mice (Supplementary Fig. 2a). In contrast, TLR4-deficient mice exhibited significantly reduced airway eosinophilia, mucus production, and T_H2 cytokine production (Supplementary Fig. 2b-d). Because LPS is a TLR4 agonist that can promote T_H2 responses at low doses²⁸, we measured the concentration of contaminating LPS in CRA. We found that each dose of CRA contained 11 ng of LPS (data not shown) and asked if this low level of LPS was sufficient to drive sensitization to an antigen. In contrast to CRA-treated mice, mice sensitized and challenged with 11 ng of LPS plus ovalbumin failed to develop airway eosinophilia (Supplementary Fig. 3). This suggests that, while LPS might contribute, it alone does not drive sensitization to CRA.

In addition to TLRs, MyD88 is also required for signaling pathways downstream of the IL-1 receptor family. Members of the IL-1 cytokine family, such as IL-1 α and IL-33, have been shown to be important for sensitization to HDM¹⁵. When IL1R signaling was blocked with anakinra, an IL-1 receptor antagonist, levels of airway eosinophilia were similar to that of the control group (Supplementary Fig. 4a). These results demonstrate that IL-1 α and IL1 β are not required for allergic response to CRA. Consistent with this data, we also found that IL-1 α was not upregulated in response to low or high dose of CRA (data not shown). Next, we compared WT and *casp1*^{-/-} mice to determine the role of IL-18 and IL-1 β . Caspase 1 is required for processing pro-IL-1 β and pro-IL-18 into their active forms. Again, we found no significant differences in eosinophil numbers between WT and *casp1*^{-/-} mice after CRA challenge (Supplementary Fig. 4b). However, when IL-33-deficient mice were sensitized and challenged with CRA, there was a significant decrease in airway eosinophilia compared to WT mice. Surprisingly, the numbers of CD4 T cells, DCs, and neutrophils remained elevated in IL-33-deficient mice (Supplementary Fig. 4c). These results show that among the IL-1 cytokines, IL-33 played a limited role in CRA-induced airway eosinophilia.

MyD88 is required in lung epithelial cells for allergic inflammation to CRA

MyD88 is expressed broadly in both immune and structural cells. To determine which of these cellular compartments were responsible for MyD88-dependent responses to CRA, we established reciprocal bone marrow (BM) chimeras in which WT or *Myd88*^{-/-} BM cells were transferred into irradiated WT or *Myd88*^{-/-} hosts. WT \rightarrow WT BM chimeric mice

developed a robust allergic response to CRA. In contrast, *Myd88*^{-/-} *Myd88*^{-/-} → BM chimeric mice developed reduced eosinophilia, which confirmed the critical role of MyD88 in CRA-induced allergic inflammation (Supplementary Fig. 5). A similar reduction in eosinophilia was observed when MyD88 was absent in structural cells (WT → *Myd88*^{-/-}). In contrast, absence of MyD88 in the radiosensitive, hematopoietic compartment (*Myd88*^{-/-} → WT) did not affect the degree of allergic inflammation to CRA (Supplementary Fig. 5). These results indicate that MyD88 expression is required in lung radioresistant cells for a T_H2 allergic response against CRA.

MyD88 is expressed by various structural cells in the lung such as epithelial cells and fibroblasts²⁹. Because epithelial cells are uniquely positioned to sense inhaled allergens and can initiate T_H2 allergic responses, we hypothesized that MyD88 expression is required in epithelial cells to promote sensitization to CRA. To test this hypothesis, we generated mice that lacked MyD88 specifically in lung epithelial cells by crossing *Myd88*^{fl/fl} mice with mice expressing Cre recombinase under the control of the 3.7-kb human surfactant protein C (SPC) promoter^{30,31}. The SPC promoter is expressed in the primary lung buds starting at E10.5 and directs recombination in all airway and alveolar epithelial cells^{30,32–34}. When SPC-Cre/*Myd88*^{fl/fl} mice were sensitized and challenged with CRA, they developed significantly reduced airway eosinophilia and goblet cell metaplasia (Fig. 3a, b). In addition, restimulation of cells isolated from the lungs of these mice revealed a significant decrease in the percentage and number of IL-5⁺ and IL-13⁺ CD4 T cells (Fig. 3c). On the other hand, deletion of MyD88 in CD11c⁺ cells and CD4 T cells had no effect on the degree of airway inflammation following sensitization and challenge with CRA (Supplementary Fig. 6). Altogether, these results demonstrate that MyD88 signaling in lung epithelial cells, but not hematopoietic cells, is important for initiation of allergic responses against CRA.

GM-CSF is produced by lung epithelial cells in a MyD88 dependent manner

Following allergen exposure, epithelial cells can initiate and regulate T_H2 responses through production of prototypical cytokines such as TSLP, IL-25, and IL-33². However, we found no significant differences in CRA-induced airway eosinophilia between WT, *Tslp*^{-/-}, and *Il17rb*^{-/-} mice (Supplementary Fig. 7), while IL-33-deficient mice only displayed a reduction in eosinophilia (Supplementary Fig. 4c).

When we examined additional epithelial-derived cytokines induced by CRA, we found elevated levels of GM-CSF in the BAL as early as two hours post-sensitization (Fig. 4a). To assess if upregulation of GM-CSF was dependent on MyD88 signaling in lung epithelial cells, we analyzed the expression of GM-CSF in SPC-Cre/*Myd88*^{fl/fl} mice after sensitization with CRA. SPC-Cre/*Myd88*^{fl/fl} mice failed to upregulate GM-CSF in response to CRA, suggesting that MyD88 signaling in lung epithelial cells triggers the release of GM-CSF (Fig. 4b).

To confirm that epithelial cells produced GM-CSF in response to CRA, we established organotypic air-liquid interface (ALI) cultures of primary epithelial cells from WT and *Myd88*^{-/-} tracheas. When WT ALI cultures were stimulated with CRA, there was a significant increase in GM-CSF levels in the culture medium on the basolateral side (Fig. 4c). In contrast, ALI cultures established from *Myd88*^{-/-} mice failed to upregulate GM-

CSF after stimulation with CRA (Fig. 4c). Altogether, these results demonstrate that airway epithelial cells produce GM-CSF in a MyD88-dependent manner following exposure to CRA.

GM-CSF is required during allergic sensitization, but not challenge, in CRA-driven allergic airway disease

To investigate the role of epithelial-derived GM-CSF in regulating CRA-driven allergic airway disease, mice were treated with a neutralizing α GM-CSF antibody at either sensitization or challenge. Blocking GM-CSF at sensitization strongly reduced airway inflammation after CRA challenge, with eosinophil numbers in the BAL significantly lower compared to isotype control treatment (Fig. 5a). There was also a reduction in the number of CD4 T cells, DCs, and neutrophils (Fig. 5a). Furthermore, mRNA expression of type 2 cytokines and serum CRA-specific IgE levels were also significantly reduced (Fig. 5c, d). In contrast, blocking GM-CSF at challenge failed to reduce airway eosinophilia in mice sensitized and challenged with CRA (Fig. 5e). These results reveal a crucial role for GM-CSF during sensitization, but not challenge, in CRA-induced allergic airway disease.

GM-CSF is required for optimal dendritic cell function and Th2 priming

Given that the allergic response to CRA is CD4 T cell driven, we postulated that GM-CSF played a role in DC function during priming. To explore this possibility, we asked how neutralization of GM-CSF affected the maturation of DCs after exposure to CRA. Mice were sensitized with fluorescently-labeled CRA in the presence or absence of the α GM-CSF antibody, and the number of CRA⁺ DCs in the draining lymph node was determined by flow cytometry. Neutralization of GM-CSF significantly reduced the delivery of fluorescently labelled CRA to the draining lymph node. There was a reduction in both the percentage and total number of A647-CRA⁺ DCs in the lung-draining lymph node 24 hours after CRA administration (Fig. 6a). Additionally, surface expression of the costimulatory molecule CD80 was markedly decreased on A647⁺ DCs (Fig. 6b). These findings suggest that GM-CSF regulates the ability of DCs to acquire antigen, upregulate costimulatory molecules, and migrate to the draining lymph node during sensitization. To examine if GM-CSF blockade affected the ability of DCs to prime T_H2 cells, we sensitized mice with CRA and collected lung-draining lymph node cells on day 3. When these cells were restimulated with CRA, there was a significant reduction in the production of T_H2 cytokines from α GM-CSF treated mice (Fig. 6c). Overall, these results demonstrate that GM-CSF is required for optimal function of DCs and Th2 priming during CRA sensitization.

GM-CSF selectively rescues T_H2 allergic airway response to CRA in *Myd88*^{-/-} mice

To determine the function of GM-CSF downstream of MyD88 signaling, GM-CSF was administered intranasally to *Myd88*^{-/-} mice during CRA sensitization. Treatment with GM-CSF largely restored airway inflammation in *Myd88*^{-/-} mice to levels observed in WT mice. This was due to a significant increase in the number of eosinophils and CD4 T cells, whereas recruitment of neutrophils to the BAL was not recovered by GM-CSF treatment (Fig. 7a, b). Furthermore, GM-CSF selectively restored T_H2, but not T_H17 responses, in *Myd88*^{-/-} mice. In vitro restimulation of lung cells with PMA/ionomycin revealed a significant increase in the number of IL-5⁺ and IL-13⁺ CD4 T cells, but not IL-17A⁺ or

IFN γ ⁺ CD4 T cells (Fig. 7d). Consistent with the recovery of T_H2 responses, CRA-specific IgE levels were also restored by GM-CSF treatment (Fig. 7c). These results demonstrate that epithelial-derived GM-CSF specifically promotes T_H2-mediated eosinophilic inflammation following exposure to CRA.

Discussion

The airway epithelium coordinates allergic responses by producing pro-Th2 cytokines such as TSLP, IL-25, IL-33, and GM-CSF. Although studies using HDM allergen have provided valuable insights into the role of epithelial-derived cytokines in mucosal sensitization, understanding pathways of sensitization initiated by other clinically relevant allergens remain important given that allergens are structurally and functionally distinct. Here, we focused on cockroach allergen, an important factor in the development of asthma for inner-city children. We uncovered a critical role for epithelial-derived GM-CSF in allergic sensitization to CRA, in which GM-CSF specifically promoted Th2 priming by regulating the functional maturation of DCs. Interestingly, while IL-1 α initiates the release of GM-CSF in response to HDM, IL-1 α was not required for CRA-induced GM-CSF. Additionally, IL-33 only played a minor role in allergic response to CRA whereas IL-33 is critical for allergic sensitization to HDM. Thus, our study demonstrates that epithelial-derived GM-CSF is a critical early signal for the initiation of Th2 allergic responses to CRA.

Activation of PAR2 by CRA-derived proteases is important for initiation of allergic responses to CRA. However, in the absence of PAR2, allergic response to CRA is partially reduced but nonetheless intact, which suggests a role for other PRRs in the recognition of CRA³⁵. In this study, we have identified TLR4-MyD88 as a major signaling pathway that promotes sensitization to CRA. We show that MyD88 signaling was required in lung epithelial cells for upregulation of GM-CSF during sensitization. Previous studies have shown that CRA-derived proteases can also induce GM-CSF production by epithelial cells through a PAR2 dependent mechanism³⁶. Our findings suggest that in addition to PAR2, TLR4-MyD88 signaling pathway is another important signaling pathway that mediates production of GM-CSF in response to CRA.

TLR4 stimulation with a low dose of LPS can promote Th2 responses to inhaled antigens²⁸. Here we show that the TLR4-mediated response to CRA extends beyond an immune response to LPS and antigen since the low level of contaminating LPS in CRA was not sufficient to induce Th2 allergic responses. Instead, it is possible that other components of CRA or the release of endogenous ligands mediates this TLR4-dependent response to CRA. Bla g 1, a major cockroach allergen, contains a hydrophobic cavity that binds to lipids known to activate TLR4³⁷. Therefore, Bla g 1 may lower the threshold of LPS needed to generate a T_H2 allergic response by enhancing TLR4 binding. Alternatively, TLR4 may be activated by an endogenous ligand released in response to CRA such as high mobility group box 1 (HMGB1)³⁸. This ability to trigger TLR4 is a characteristic shared by many allergens, and our findings further support the idea that TLR4 signaling is essential for the development of allergic inflammation.

Previous studies have shown that CRA contains a TLR2 agonist³⁹. However, we found that TLR2 was not required for allergic responses to CRA. This finding is consistent with a study by Page et al. in which TLR2^{-/-} mice displayed increased airway inflammation against CRA⁴⁰. Although we did not find a protective role for TLR2, which could be due to differences in the route of sensitization and administration protocol, our data demonstrates that TLR2 is not required for allergic sensitization to CRA.

Activation of airway epithelial cells is a critical first step in the initiation of responses to aeroallergens. In this study, we demonstrate that MyD88 expression in radioresistant cells was necessary and sufficient for allergic airway response to CRA. Furthermore, we determined that MyD88 signaling in lung epithelial cells, but not in CD11c⁺ alveolar macrophages or DCs, was required for sensitization to CRA. Our findings indicate that MyD88 signaling in epithelial cells plays a predominant role in facilitating allergic responses to CRA. In contrast, a recent study in HDM showed that TLR4 signaling in both lung epithelial cells and hematopoietic cells contributes to the allergic response⁴¹. It is likely that this difference in the contribution of epithelial cells to CRA- versus HDM-driven allergic responses leads to further differences in the induction and requirement of epithelial-derived cytokines.

In this study, we found key differences in the requirement for epithelial-derived cytokines in allergic response to CRA, compared to other allergens. We show that TSLP and IL-25 were dispensable for the development of CRA-induced airway inflammation. Although TSLP has been considered a master regulator of Th2 responses, our data indicate a redundant role for TSLP and IL-25 in airway sensitization and is consistent with studies in HDM and peanut allergy¹⁰. Additionally, IL-33 only played a minor role in allergic responses to CRA; in stark contrast, IL-33 is essential for allergic sensitization to HDM^{10,15} and many other clinically relevant allergens such as *Alternaria alternata*, peanut allergen, cypress pollen, and bee venom^{10,42-44}. Although the current paradigm considers TSLP, IL-25, and IL-33 to be critical drivers of Th2 allergic responses, we present a novel pathway in which all three epithelial-derived cytokines are not crucial for sensitization to CRA.

Inhaled allergens and other noxious stimuli such as viruses, cigarette smoke, and diesel exhaust fumes can upregulate the expression of GM-CSF in the airway⁴⁵⁻⁴⁸. Increased levels of GM-CSF amplifies the risk of allergic sensitization by lowering the threshold of allergen required for allergic responses¹⁶. Additionally, neutralizing GM-CSF at sensitization reduces allergic inflammation to HDM and *Blomia tropicalis* mite allergen^{15,17,18}. However, in contrast to HDM in which both IL-33 and GM-CSF are required for allergic responses, we found that epithelial-derived GM-CSF was the primary driver of allergic sensitization to CRA. Furthermore, in the absence of MyD88, delivery of exogenous GM-CSF was sufficient to initiate an allergic response to CRA, which suggests that IL-33 is not required for GM-CSF mediated responses to CRA. Interestingly, we also show that GM-CSF selectively initiates the Th2, but not the Th17, arm of the immune response to CRA, which indicates a directed role for GM-CSF that extends beyond a proinflammatory action.

Although epithelial-derived GM-CSF plays an important role in sensitization to both HDM and CRA, there are key differences in the pathways that lead to production of GM-CSF by these distinct allergens. Willart et al. showed that sensitization to HDM is driven by epithelial-derived IL-1 α , which acts upstream in the cytokine cascade to initiate the release of GM-CSF in an autocrine manner¹⁵. However, the requirement for IL-1 α in HDM-driven allergic responses depends on the allergen dose and administration protocol⁴⁹. In contrast, IL-1 α was not upregulated in response to CRA and was not required for allergic responses to CRA, suggesting that GM-CSF production is independent of IL-1 α . Despite differences in the pathways of sensitization initiated by CRA versus HDM, these pathways converge on GM-CSF, which suggests a central role for GM-CSF in allergic sensitization.

In conclusion, we have determined the role of epithelial-derived cytokines in CRA-driven allergic responses. We uncovered a novel pathway in which epithelial-derived GM-CSF, but not TSLP, IL-25, or IL-33, is essential for allergic sensitization to CRA. Upregulation of GM-CSF in lung epithelial cells occurs through a MyD88-dependent pathway that does not require IL-1 α . Downstream of MyD88, GM-CSF selectively initiates a Th2 allergic response, but not Th17-mediated responses. Overall, our findings establish a central role for epithelial-derived GM-CSF in allergic sensitization to CRA and suggest that GM-CSF might be an important therapeutic target.

Materials and Methods

Mice

C57BL/6 mice were purchased from Jackson or Charles River Laboratories. *Tlr2*^{-/-} mice were provided by John Gebe (Benaroya Research Institute). *Tlr4*^{lps-del} mice on the C57BL/6 background were obtained from The Jackson Laboratory; *Myd88*^{-/-} mice were provided by Tobias Hohl (Memorial Sloan Kettering Cancer Center); *Myd88*^{lox/lox} mice were provided by Mohamed Oukka (Seattle Children's Hospital); *casp1*^{-/-} mice were provided by Michael Gale (University of Washington); *Il33*^{-/-} mice were provided by Dirk Smith (Amgen); SPC-Cre mice were provided by Brigid Hogan (Duke University); *Il17rb*^{-/-} mice were provided by Xiaoxia Li (Cleveland Clinic Lerner Research Institute). TSLPR^{-/-} mice were described previously⁵⁰. All animals were housed in specific pathogen-free conditions in the Benaroya Research Institute animal facility and all experiments were approved by the Benaroya Research Institute Animal Care and Use Committee.

Reagents

Lyophilized whole body German cockroach extract was purchased from Greer laboratories (XPB46D3A4, Lot # 259066) and resuspended in PBS to a protein concentration of 2 mg/ml. Low endotoxin ovalbumin was purchased from Worthington Biochemical Corporation (LS003061). LPS from *E. coli* 026:B6 was purchased from Sigma (L2654). Human IL-1ra (anakinra) was purchased from the Virginia Mason hospital pharmacy. Recombinant GM-CSF was purchased from Peprotech (315-03).

Cockroach allergen induced allergic airway model

On days 0–2, mice were anesthetized with isoflurane and sensitized intranasally with 40 µg of CRA (Greer, B46) in a total volume of 20 µl PBS. After 15 days, mice were challenged intranasally with 40 µg of CRA on two consecutive days and airway inflammation was assessed 72 hours later. Control mice were treated with PBS under the same protocol. For neutralization experiments, anti-GM-CSF antibody (Clone MP1-22E9, Biolegend) was injected 5 hours before the first sensitization or challenge dose. 120 µg of antibody was administered i.p. and 30 µg of antibody was administered intranasally. Anakinra, IL-1ra, was i.p. administered at 25 mg/kg with each dose of CRA for a total of five times. To deplete CD4 T cells, 150 µg of anti-CD4 antibody (GK1.5, Bio X Cell) was i.p. administered on days -1, 2, and 16. To determine if GM-CSF can recover T_H2 allergic inflammation in *Myd88*^{-/-} mice, mice were intranasally treated with 50 ng of GM-CSF plus CRA during sensitization and were only challenged with CRA.

Evaluation of airway inflammation

Mice were euthanized by i.p. injection with 1 ml of 2.5% Avertin. Bronchoalveolar lavage (BAL) was performed four times, each time with 1 ml of PBS. Next, BAL was centrifuged at 250 x g for 5 min to collect the cell pellet. Cells were resuspended in FACS buffer and counted using a hemocytometer. Differential cell counts were performed by flow cytometry. The first ml of BAL fluid collected for ELISA.

After BAL, lungs were perfused by injecting 3 ml of PBS into the right ventricle of the heart until the lungs turned white. The right upper lobe of the lung was placed in 1 ml of RNALater and stored at -80°C for later analysis by qPCR. The remaining lung tissue was fixed in 10% neutral buffered formalin. Tissues were embedded in paraffin, sectioned, and stained with H&E and periodic acid-Schiff. Serum was collected and analyzed for CRA-specific antibodies by ELISA.

To determine differential cell counts in the lung, single cell suspensions were prepared by cutting the lung into fine pieces using a scissor. Next, lung tissue was digested in 50 µg/ml of Liberase TM (Roche) and 10 U/ml of DNase I (Sigma) in RPMI-1640 at 37°C for 30 min. Digested lung samples were filtered through a 100-µm cell strainer and washed with equal volumes of RPMI plus 20% FBS. Red blood cells were lysed with ACK lysis buffer and lung cells were centrifuged at 250 x g for 5 min. Cells were resuspended in FACS buffer and counted using a hemocytometer. Differential cell counts were performed by flow cytometry. Lung cells were stimulated for 4 h with PMA (50 ng/ml), ionomycin (500 ng/ml), and GolgiPlugTM (BD Biosciences) at the recommended concentration.

A647-CRA and Migration of DCs

A647 was conjugated to CRA using the Alexa Fluor 647 microscale protein labeling kit per manufacturer's instructions (Life Technologies). DC uptake of A647-CRA and migration to the draining lymph node was assessed by administering 11 µg of A647-CRA plus 39 µg of unconjugated CRA intranasally. Twenty four hours later, lung draining lymph node was collected and single cell suspension was prepared. Lymph nodes were teased apart using needles and digested in 1 ml of digest solution containing 50 µg/ml of Liberase TM (Roche)

and 10 U/ml of DNase I in RPMI-1640. After digesting for 25 minutes at 37°C, 100 µl of 0.1 M EDTA was added to each sample and digested for five additional minutes at 37°C. Next, digested lymph nodes were crushed with a 1 ml syringe and filtered through a 100-µm cell filter. Cells were resuspended in FACS buffer and analyzed by flow cytometry.

Evaluation of sensitization to CRA

On days 0–2, mice were sensitized with 40 µg of CRA intranasally. On day 3, lung draining lymph nodes were collected and single cell suspensions were prepared as described above. Cells were plated in a 96-well flat bottom plate at 5×10^6 cells/ml and restimulated with 0 or 10 µg/ml of CRA. The cell culture supernatant was collected on day 7 and cytokine levels were analyzed by ELISA.

Bone marrow chimeras

Mice were irradiated twice with 4.5 Gy and at least 2×10^6 bone marrow cells were transferred i.v. by retro-orbital injection. Mice were used for experiments after 8–10 weeks to allow for bone marrow reconstitution.

Flow Cytometry

To prevent nonspecific binding of antibodies, cells were incubated with anti-CD16/CD32 (Clone: 2.4G2) in FACS buffer for 15 minutes at room temperature. The following antibodies were purchased: anti-Ly6G FITC (1A8), anti-IFN γ FITC (XMG1.2), anti-Ly6C PerCpCy5.5 (HK1.4), anti-CD103 Pacific Blue (2E7), anti-Foxp3 e450 (FJK-16s), anti-CD4 BV605 (RM4-5), anti-CD80 BV605 (16-10A1), anti-CD45R BV650 (RA3-6B2), anti-IL-5 APC (TRFK5), anti-MHCII A700 (M5/114.15.2), anti-CD44 A700 (IM7), anti-CD11b APC-e780 (M1/70), anti-TCR β APC-e780 (H57-597), anti-Siglec F PE (E50-2440), anti-IL-13 PE (eBio13A), anti-CD3 PECy5 (145-2C11), anti-CD11c PE-Cy7 (N418), anti-IL-4 PECy7 (BVD6-24G2). Cells were stained with surface antibodies for 12 minutes at room temperature. For intracellular staining of cytokines, cells were fixed, permeabilized, and stained using the Foxp3 fix/permeabilization buffer set (Biolegend) according to manufacturer's instructions. Samples were analyzed with BD LSR II flow cytometer (BD Biosciences).

Real-time PCR

Lung tissues were homogenized in RNA lysis buffer and RNA was isolated using the Nucleospin RNA kit (Clontech). RNA was reverse-transcribed into cDNA using PrimeScript Reverse Transcriptase (Takara) according to the manufacturer's instructions. cDNA was amplified in a 7900HT Sequence Detection System (Applied Biosystems, Foster City, CA) using SYBR *Premix Ex Taq* II (Takara). The following primer pairs were used: *csf2* forward, 5'-GGCTAAGGTCCTGAGGAGGAT-3'; *csf2* reverse, 5'-ACCTCTTCATTCAACGTGACAGG-3'; *Il4* forward, 5'-TCATCGGCATTTTGAACGAG-3'; *Il4* reverse, 5'-TTTGGCACATCCA TCTCCG-3'; *Il5* forward, 5'-TGCCTGGAGCAGCTGGAT-3'; *Il5* reverse, 5'-TGGCTGGCTCTC ATTCACACT-3'; *Il13* forward, 5'-ATTCCCTGACCAACATCTCCAA-3'; *Il13* reverse, 5'-CGGTTACAGAGCCATGCAA-3'; *Il17a* forward, 5'-ATCAGGACGCGCAAACATGAGT-3'; *Il17a* reverse, 5'-ACGCTGAGCTTTGAGGGATGAT-3'; *Ifng* forward, 5'-

CCTGCGGCCTAGCTCTGA G-3'; *Ifng* reverse, 5'-GCCATGAGGAAGAGCTGCA-3';
Gapdh forward, 5'-TCCATGACAACCTT TGGCATTG-3'; *Gapdh* reverse, 5'-
CAGTCTTCTGGGTGGCAGTGA-3'.

Air-liquid interface cultures

Primary airway epithelial cells were cultured as previously described⁵¹. Mice were euthanized by CO₂ and the trachea was collected and digested in 0.2% pronase at 4°C overnight. Mouse tracheal epithelial cells (MTEC) were isolated and cultured on collagen-coated transwells. After one week, MTEC cultures were transitioned to air-liquid interface (ALI) by removing medium from the upper compartment and maintained at ALI for 2 weeks. Cells were exposed to 15 µg of CRA for 24 hours and medium from the basal compartment was collected for ELISA.

ELISA

To detect CRA-specific IgE, plates were coated overnight with 6.25 µg/ml CRA in PBS at 4°C. Plates were washed and blocked with 1% BSA in PBS for 2 hours at room temperature. Serum samples were added to the plates and incubated for 2 hours at room temperature. Plates were washed and biotin-conjugated anti-mouse IgE (R35-118) was added at 1:250 dilution and incubated for 2 hours at room temperature. Plates were washed and incubated with streptavidin-HRP for 30 minutes. 1-Step Ultra TMB-ELISA substrate (Pierce) was added and incubated at room temperature in the dark. The reaction was stopped with 2 N H₂SO₄ and OD was measured at 450 nm.

To detect cytokines, the following capture and detection antibody pairs were used: anti-IL-4 Purified (11B11) and anti-IL-4 Biotin (BVD6-24G2), anti-IL-5 Purified (TRFK5) and anti-IL-5 Biotin (TRFK4), anti-IL-13 Purified (eBio13A) and anti-IL-13 Biotin (eBio1316H), anti-IL-17A Purified (eBio17CK15A5) and anti-IL-17A Biotin (eBio17B7), anti-GM-CSF Purified (MP1-22E9) and anti-GM-CSF Biotin (MP1-3G6). The concentration of cytokines in the BAL fluid were detected using these antibodies and the protocol described above.

Statistics

Statistical analysis was performed using GraphPad Prism 5. Comparisons were made using either unpaired Student's *t* test or one-way ANOVA with a Tukey posthoc test. * *p* < 0.05, ** *p* < 0.01, *** *p* < 0.001.

Supplementary Material

Refer to Web version on PubMed Central for supplementary material.

Acknowledgments

We thank Drs. Jessica Hamerman, Daniel Campbell, Florence Roan, and Jen-Feng Lai for critical discussion of the manuscript. The work was supported in part by NIH grants RO1 AI068731 and PO1 HL098067 (S.F.Z). A.S. is supported by the National Science Foundation Graduate Research Fellowship Grant DGE-1256082.

References

1. Wenzel SE. Asthma phenotypes: the evolution from clinical to molecular approaches. *Nat Med.* 2012; 18(5):716–725. DOI: 10.1038/nm.2678 [PubMed: 22561835]
2. Lambrecht BN, Hammad H. Allergens and the airway epithelium response: Gateway to allergic sensitization. *J Allergy Clin Immunol.* 2014; 134(3):499–507. DOI: 10.1016/j.jaci.2014.06.036 [PubMed: 25171864]
3. Saenz, Sa, Taylor, BC., Artis, D. Welcome to the neighborhood: Epithelial cell-derived cytokines license innate and adaptive immune responses at mucosal sites. *Immunol Rev.* 2008; 226:172–190. DOI: 10.1111/j.1600-065X.2008.00713.x [PubMed: 19161424]
4. Ziegler S, Artis D. Sensing the outside world: TSLP regulates barrier immunity. *Nat Immunol.* 2010; 11(4):289–293. DOI: 10.1038/ni.1852.Sensing [PubMed: 20300138]
5. Zhou B, Comeau MR, De Smedt T, et al. Thymic stromal lymphopoietin as a key initiator of allergic airway inflammation in mice. *Nat Immunol.* 2005; 6(10):1047–1053. DOI: 10.1038/ni1247 [PubMed: 16142237]
6. Schmitz J, Owyang A, Oldham E, et al. IL-33, an Interleukin-1-like Cytokine that Signals via the IL-1 Receptor-Related Protein ST2 and Induces T Helper Type 2-Associated Cytokines. *Immunity.* 2005; 23(5):479–490. DOI: 10.1016/j.immuni.2005.09.015 [PubMed: 16286016]
7. Tamachi T, Maezawa Y, Ikeda K. IL-25 enhances allergic airway inflammation by amplifying a TH 2 cell – dependent pathway in mice. :606–614. DOI: 10.1016/j.jaci.2006.04.051
8. Stämpfli MR, Wiley RE, Neigh GS, et al. GM-CSF transgene expression in the airway allows aerosolized ovalbumin to induce allergic sensitization in mice. *J Clin Invest.* 1998; 102(9):1704–1714. DOI: 10.1172/JCI14160 [PubMed: 9802884]
9. Ashrin MN, Arakaki R, Yamada A, et al. A Critical Role for Thymic Stromal Lymphopoietin in Nickel-Induced Allergy in Mice. *J Immunol.* Mar.2014 doi: 10.4049/jimmunol.1300276
10. Chu DK, Llop-Guevara A, Walker TD, et al. IL-33, but not thymic stromal lymphopoietin or IL-25, is central to mite and peanut allergic sensitization. *J Allergy Clin Immunol.* 2012; :25.doi: 10.1016/j.jaci.2012.08.002 [PubMed: 22608573]
11. Bleck B, Grunig G, Chiu A, et al. MicroRNA-375 regulation of thymic stromal lymphopoietin by diesel exhaust particles and ambient particulate matter in human bronchial epithelial cells. *J Immunol.* 2013; 190(7):3757–3763. DOI: 10.4049/jimmunol.1201165 [PubMed: 23455502]
12. Kouzaki H, O’Grady SM, Lawrence CB, Kita H. Proteases induce production of thymic stromal lymphopoietin by airway epithelial cells through protease-activated receptor-2. *J Immunol.* 2009; 183(2):1427–1434. DOI: 10.4049/jimmunol.0900904 [PubMed: 19561109]
13. Li DQ, Zhang L, Pflugfelder SC, et al. Short ragweed pollen triggers allergic inflammation through Toll-like receptor 4-dependent thymic stromal lymphopoietin/OX40 ligand/OX40 signaling pathways. *J Allergy Clin Immunol.* 2011; 128(6):1318–1325. e2. DOI: 10.1016/j.jaci.2011.06.041 [PubMed: 21820713]
14. Van Dyken SJ, Mohapatra A, Nussbaum JC, et al. Chitin Activates Parallel Immune Modules that Direct Distinct Inflammatory Responses via Innate Lymphoid Type 2 and $\gamma\delta$ T Cells. *Immunity.* Mar.2014 :1–11. DOI: 10.1016/j.immuni.2014.02.003
15. Willart, MaM, Deswarte, K., Pouliot, P., et al. Interleukin-1 α controls allergic sensitization to inhaled house dust mite via the epithelial release of GM-CSF and IL-33. *J Exp Med.* Jul.2012 doi: 10.1084/jem.20112691
16. Llop-Guevara A, Chu DK, Walker TD, et al. A GM-CSF/IL-33 pathway facilitates allergic airway responses to sub-threshold house dust mite exposure. *PLoS One.* 2014; 9(2):e88714.doi: 10.1371/journal.pone.0088714 [PubMed: 24551140]
17. Zhou Q, Ho AWS, Schlitzer A, et al. GM-CSF-Licensed CD11b+ Lung Dendritic Cells Orchestrate Th2 Immunity to *Blomia tropicalis*. *J Immunol.* Jun.2014 doi: 10.4049/jimmunol.1303138
18. Cates E, Fattouh R, Wattie J. Intranasal exposure of mice to house dust mite elicits allergic airway inflammation via a GM-CSF-mediated mechanism. *J Immunol.* 2004; 173(10):6384–6392. [Accessed June 29, 2012] <http://www.jimmunol.org/content/173/10/6384.short>. [PubMed: 15528378]

19. Arruda LK, Pomés A. Every Cockroach Is Beautiful to Its Mother. *Int Arch Allergy Immunol*. 2013; 161(4):289–292. DOI: 10.1159/000350207 [PubMed: 23689492]
20. Rosenstreich DL, Eggleston P, Kattan M, et al. The role of cockroach allergy and exposure to cockroach allergen in causing morbidity among inner-city children with asthma. *N Engl J Med*. 1997; 336(19):1356–1363. DOI: 10.1056/NEJM199705083361904 [PubMed: 9134876]
21. Eggleston, Pa, Rosenstreich, D., Lynn, H., et al. Relationship of indoor allergen exposure to skin test sensitivity in inner-city children with asthma. *J Allergy Clin Immunol*. 1998; 102(4 I):563–570. DOI: 10.1016/S0091-6749(98)70272-6 [PubMed: 9802363]
22. Page K, Strunk VS, Hershenson MB. Cockroach proteases increase IL-8 expression in human bronchial epithelial cells via activation of protease-activated receptor (PAR)-2 and extracellular-signal-regulated kinase. *J Allergy Clin Immunol*. 2003; 112(6):1112–1118. DOI: 10.1016/j.jaci.2003.08.050 [PubMed: 14657869]
23. Kim JY, Sohn JH, Choi J-M, et al. Alveolar Macrophages Play a Key Role in Cockroach-Induced Allergic Inflammation via TNF- α Pathway. *PLoS One*. 2012; 7(10):e47971.doi: 10.1371/journal.pone.0047971 [PubMed: 23094102]
24. Lee KE, Kim JW, Jeong KY, Kim KE, Yong TS, Sohn MH. Regulation of German cockroach extract-induced IL-8 expression in human airway epithelial cells. *Clin Exp Allergy*. 2007; 37(9): 1364–1373. DOI: 10.1111/j.1365-2222.2007.02797.x [PubMed: 17845418]
25. Page K, Zhou P, Ledford JR, et al. Early immunological response to German cockroach frass exposure induces a Th2/Th17 environment. *J Innate Immun*. 2011; 3(2):167–179. DOI: 10.1159/000320718 [PubMed: 21051864]
26. Jang S, Morris S, Lukacs NW. TSLP Promotes Induction of Th2 Differentiation but Is Not Necessary during Established Allergen-Induced Pulmonary Disease. *PLoS One*. 2013; 8(2):e56433.doi: 10.1371/journal.pone.0056433 [PubMed: 23437132]
27. Petersen BC, Budelsky AL, Baptist AP, Schaller Ma, Lukacs NW. Interleukin-25 induces type 2 cytokine production in a steroid-resistant interleukin-17RB+ myeloid population that exacerbates asthmatic pathology. *Nat Med*. 2012; 18(5):751–758. DOI: 10.1038/nm.2735 [PubMed: 22543263]
28. Eisenbarth SC, Piggott Da, Huleatt JW, Visintin I, Herrick Ca, Bottomly K. Lipopolysaccharide-enhanced, Toll-like Receptor 4-dependent T Helper Cell Type 2 Responses to Inhaled Antigen. *J Exp Med*. 2002; 196(12):1645–1651. DOI: 10.1084/jem.20021340 [PubMed: 12486107]
29. Wang J, Hori K, Ding J, et al. Toll-like receptors expressed by dermal fibroblasts contribute to hypertrophic scarring. *J Cell Physiol*. 2011; 226(5):1265–1273. DOI: 10.1002/jcp.22454 [PubMed: 20945369]
30. Okubo T, Hogan BLM. Hyperactive Wnt signaling changes the developmental potential of embryonic lung endoderm. *J Biol*. 2004; 3(3):11.doi: 10.1186/jbiol3 [PubMed: 15186480]
31. Okubo T, Knoepfler PS, Eisenman RN, Hogan BL. Nmyc plays an essential role during lung development as a dosage-sensitive regulator of progenitor cell proliferation and differentiation. *Development*. 2005; 132(6):1363–1374. DOI: 10.1242/dev.01678 [PubMed: 15716345]
32. Didon L, Barton JL, Roos AB, et al. Lung epithelial CCAAT/enhancer-binding protein-beta is necessary for the integrity of inflammatory responses to cigarette smoke. *Am J Respir Crit Care Med*. 2011; 184(2):233–242. DOI: 10.1164/rccm.201007-1113OC [PubMed: 21562127]
33. Perez-Nazario N, Rangel-Moreno J, O'Reilly Ma, Pasparakis M, Gigliotti F, Wright TW. Selective ablation of lung epithelial IKK2 impairs pulmonary Th17 responses and delays the clearance of *Pneumocystis*. *J Immunol*. 2013; 191(9):4720–4730. DOI: 10.4049/jimmunol.1301679 [PubMed: 24078701]
34. Manzo ND, Foster WM, Stripp BR. Amphiregulin-dependent mucous cell metaplasia in a model of nonallergic lung injury. *Am J Respir Cell Mol Biol*. 2012; 47(3):349–357. DOI: 10.1165/rcmb.2011-0257OC [PubMed: 22493011]
35. Arizmendi NG, Abel M, Mihara K, et al. Mucosal allergic sensitization to cockroach allergens is dependent on proteinase activity and proteinase-activated receptor-2 activation. *J Immunol*. 2011; 186(5):3164–3172. DOI: 10.4049/jimmunol.0903812 [PubMed: 21270400]

36. Day SB, Ledford JR, Zhou P, Lewkowich IP, Page K. German cockroach proteases and protease-activated receptor-2 regulate chemokine production and dendritic cell recruitment. *J Innate Immun.* 2012; 4(1):100–110. DOI: 10.1159/000329132 [PubMed: 21876326]
37. Mueller, Ga, Pedersen, LC., Lih, FB., et al. The novel structure of the cockroach allergen Bla g 1 has implications for allergenicity and exposure assessment. *J Allergy Clin Immunol.* 2013; 132(6): 1420–1426. DOI: 10.1016/j.jaci.2013.06.014 [PubMed: 23915714]
38. Ullah MA, Loh Z, Gan WJ, et al. Receptor for advanced glycation end products and its ligand high-mobility group box-1 mediate allergic airway sensitization and airway inflammation. *J Allergy Clin Immunol.* 2014; 134(2):440–450. e3. DOI: 10.1016/j.jaci.2013.12.1035 [PubMed: 24506934]
39. Page K, Lierl KM, Hughes VS, Zhou P, Ledford JR, Wills-Karp M. TLR2-mediated activation of neutrophils in response to German cockroach frass. *J Immunol.* 2008; 180(9):6317–6324. <http://www.ncbi.nlm.nih.gov/pubmed/18424755>. [PubMed: 18424755]
40. Page K, Ledford JR, Zhou P, Wills-Karp M. A TLR2 agonist in German cockroach frass activates MMP-9 release and is protective against allergic inflammation in mice. *J Immunol.* 2009; 183(5): 3400–3408. DOI: 10.4049/jimmunol.0900838 [PubMed: 19667087]
41. McAlees JW, Whitehead GS, Harley IT, et al. Distinct Tlr4-expressing cell compartments control neutrophilic and eosinophilic airway inflammation. *Mucosal Immunol.* 2015; 8(4):863–873. DOI: 10.1038/mi.2014.117 [PubMed: 25465099]
42. Snelgrove RJ, Gregory LG, Peiró T, et al. *Alternaria*-derived serine protease activity drives IL-33-mediated asthma exacerbations. *J Allergy Clin Immunol.* 2014; 134(3)doi: 10.1016/j.jaci.2014.02.002
43. Palm NW, Rosenstein RK, Yu S, Schenten DD, Florsheim E, Medzhitov R. Bee Venom Phospholipase A2 Induces a Primary Type 2 Response that Is Dependent on the Receptor ST2 and Confers Protective Immunity. *Immunity.* 2013; 39(5):976–985. DOI: 10.1016/j.immuni.2013.10.006 [PubMed: 24210353]
44. Gabriele L, Schiavoni G, Mattei F, et al. Novel allergic asthma model demonstrates ST2-dependent dendritic cell targeting by cypress pollen. *J Allergy Clin Immunol.* 2013; 132(3)doi: 10.1016/j.jaci.2013.02.037
45. Subauste MCEA. Infection of a Human Respiratory Epithelial cell line with rhinovirus-Induction of cytokine release and modulation of susceptibility to infection by cytokine exposure. *Am Soc Clin Investig.* 1995; 96(July):549–557. DOI: 10.1172/JCI118067
46. Schelenz S, Smith DA, Bancroft GJ. Cytokine and chemokine responses following pulmonary challenge with *Aspergillus fumigatus*: obligatory role of TNF-alpha and GM-CSF in neutrophil recruitment. *Med Mycol.* 1999; 37(3):183–194. <Go to ISI>://000081444400006. [PubMed: 10421850]
47. Ohta K, Yamashita N, Tajima M, et al. Diesel exhaust particulate induces airway hyperresponsiveness in a murine model: Essential role of GM-CSF. *J Allergy Clin Immunol.* 1999; 104(5):1024–1030. DOI: 10.1016/S0091-6749(99)70084-9 [PubMed: 10550748]
48. Trimble NJ, Botelho FM, Bauer CMT, Fattouh R, Stämpfli MR. Adjuvant and Anti-Inflammatory Properties of Cigarette Smoke in Murine Allergic Airway Inflammation. *Am J Respir Cell Mol Biol.* 2009; 40(1):38–46. DOI: 10.1165/rcmb.2008-0107OC [PubMed: 18635815]
49. Nikota JK, Botelho FM, Bauer CMT, et al. Differential expression and function of breast regression protein 39 (BRP-39) in murine models of subacute cigarette smoke exposure and allergic airway inflammation. *Respir Res.* 2011; 12:12.doi: 10.1186/1465-9921-12-39 [PubMed: 21247482]
50. Carpino N, Thierfelder W. Absence of an essential role for thymic stromal lymphopoietin receptor in murine B-cell development. *Mol Cell Biol.* 2004; doi: 10.1128/MCB.24.6.2584
51. You Y, Richer EJ, Huang T, Brody SL. Growth and differentiation of mouse tracheal epithelial cells: selection of a proliferative population. *Am J Physiol Lung Cell Mol Physiol.* 2002; 283:L1315–L1321. DOI: 10.1152/ajplung.00169.2002 [PubMed: 12388377]

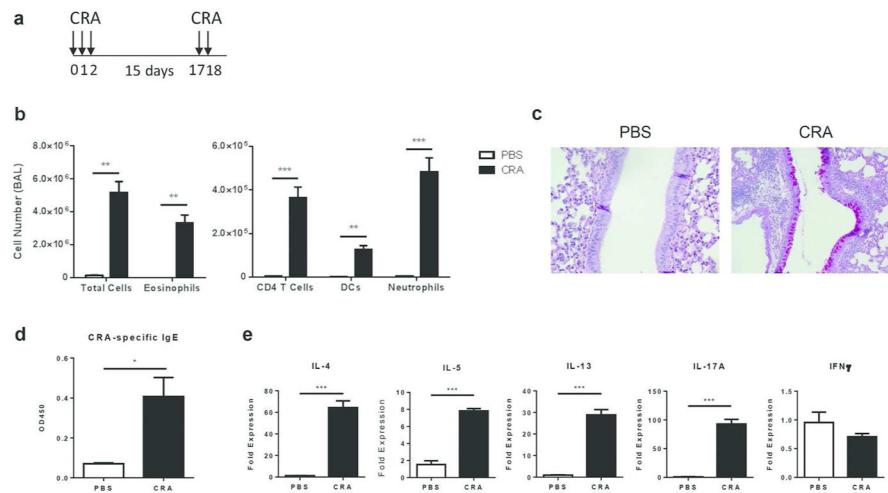


Figure 1. Intranasal sensitization and challenge with CRA results in airway inflammation with features of allergic asthma. **(a)** On days 0–2, C57BL/6 mice were intranasally sensitized with CRA and challenged with CRA on days 17–18. Allergic airway inflammation was assessed 72 hours after the last challenge. **(b)** BAL differential cell counts were determined by flow cytometry. **(c)** PAS staining of formalin-fixed and paraffin-embedded lung sections. PAS-positive cells (purple) represent mucus producing goblet cells. Original magnification, x40. **(d)** Serum levels of CRA-specific IgE were determined by ELISA. **(e)** RNA was isolated from the lungs of PBS- versus CRA-challenged mice and mRNA expression of IL-4, IL-5, IL-13, IL-17A, and IFN γ was determined by qPCR. All expression values are relative to PBS control samples and normalized to the housekeeping gene GAPDH. Data represent mean \pm SEM (n = 4–8 mice per group). Comparisons were made using unpaired Student's *t* test. * $p < 0.05$, ** $p < 0.01$, *** $p < 0.001$.

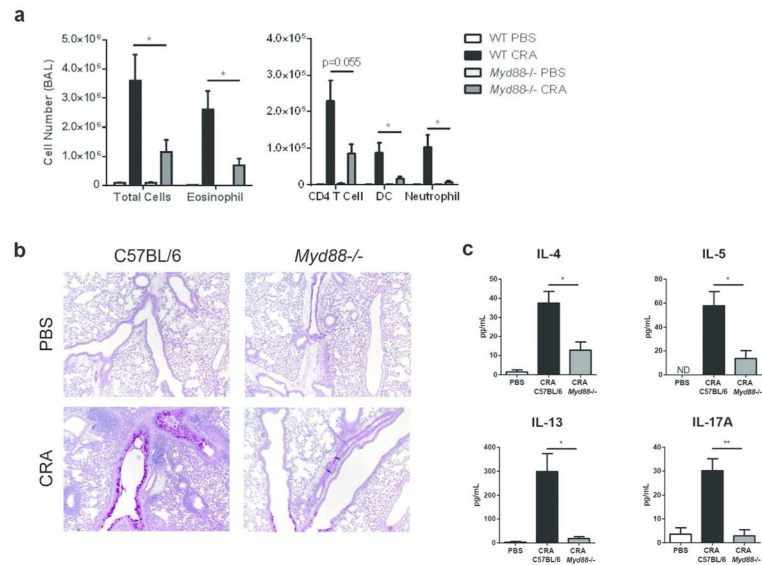


Figure 2. MyD88 is required for the development of allergic airway inflammation to CRA. C57BL/6 and *Myd88*^{-/-} mice were sensitized and challenged with CRA as described in the Methods. **(a)** BAL differential cell counts were determined by flow cytometry 72 hours after the last challenge. **(b)** PAS staining of formalin-fixed and paraffin-embedded lung sections. Original magnification, x10. **(c)** Concentration of IL-4, IL-5, IL-13, and IL-17A from BAL fluid was determined by ELISA. Data represent combined data of two independent experiments, mean \pm SEM (n = 4–9 mice per group). Comparisons were made using unpaired Student's *t* test. * p < 0.05, ** p < 0.01.

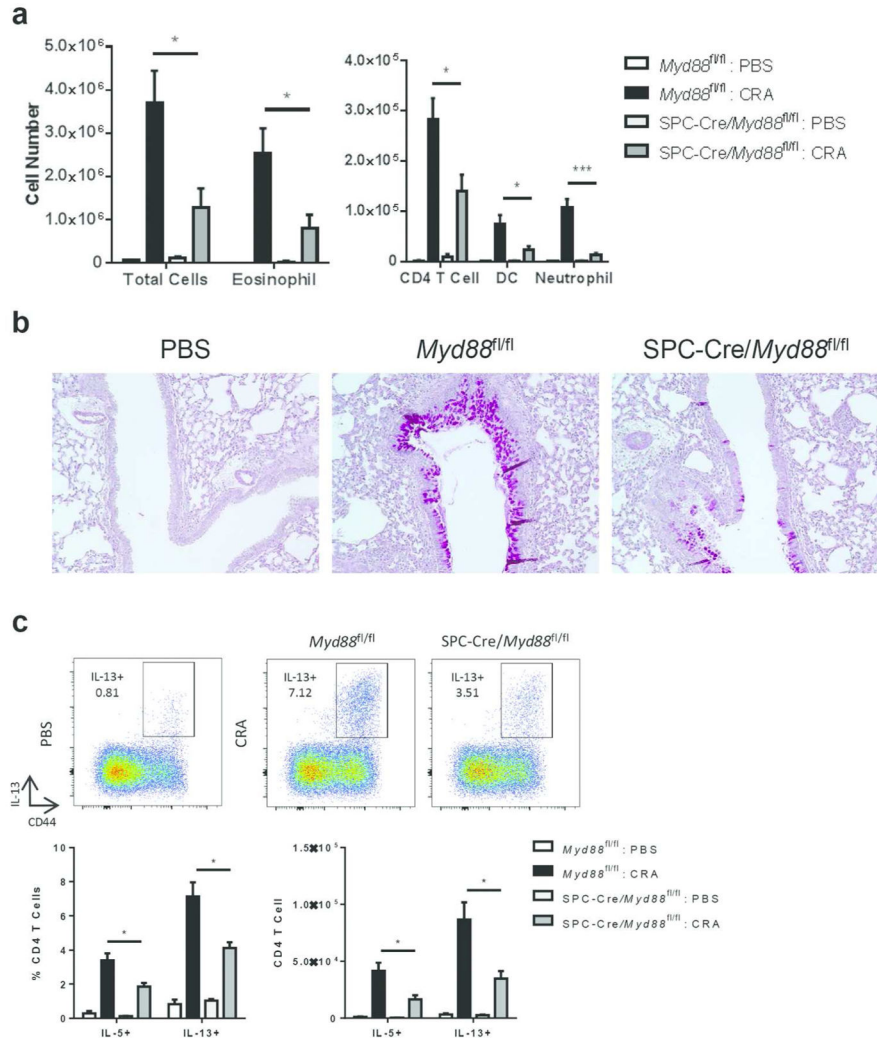


Figure 3. MyD88 is required in lung epithelial cells for allergic inflammation to CRA. SPC-Cre/*Myd88^{fl/fl}* and *Myd88^{fl/fl}* littermate control mice were sensitized and challenged with CRA. (a) BAL cell differentials were determined by flow cytometry. (b) PAS staining of formalin-fixed and paraffin-embedded lung sections. Original magnification, x20. (c) Percent and number of lung CD4 T cells positive for IL-5 and IL-13 after restimulation with PMA and ionomycin. Data represent combined data of two independent experiments, mean ± SEM (n = 4–9 mice per group). Comparisons were made using unpaired Student’s *t* test. * *p* < 0.05, ** *p* < 0.01.

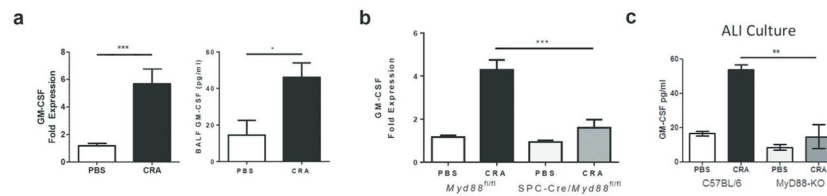


Figure 4.

GM-CSF is produced by lung epithelial cells in a MyD88 dependent manner. **(a)** C57BL/6 mice were intranasally treated with CRA. Two hours later, lung tissue was collected and mRNA expression of GM-CSF was determined by qPCR. Expression values are relative to PBS control samples and normalized to the housekeeping gene GAPDH. BAL fluid was also collected and GM-CSF protein level was measured by ELISA. Data represent combined data of two independent experiments, mean \pm SEM (n = 7–15 mice per group). **(b)** SPC-Cre/*Myd88^{fl/fl}* and *Myd88^{fl/fl}* mice were intranasally treated with CRA. Two hours later, lung tissue was collected and mRNA expression of GM-CSF was determined by qPCR. Data represent combined data of two independent experiments, mean \pm SEM (n = 4–10 mice per group). **(c)** Tracheas from C57BL/6 and *Myd88^{-/-}* mice were harvested and primary epithelial cells were cultured at air-liquid interface. Cells were exposed to 15 μ g of CRA or PBS for 24 hours and medium from the basal compartment was collected. GM-CSF levels were measured by ELISA. Data represent mean \pm SEM of one experiment and are representative of two independent experiments. Comparisons were made using unpaired Student's *t* test. * p < 0.05, ** p < 0.01, *** p < 0.001.

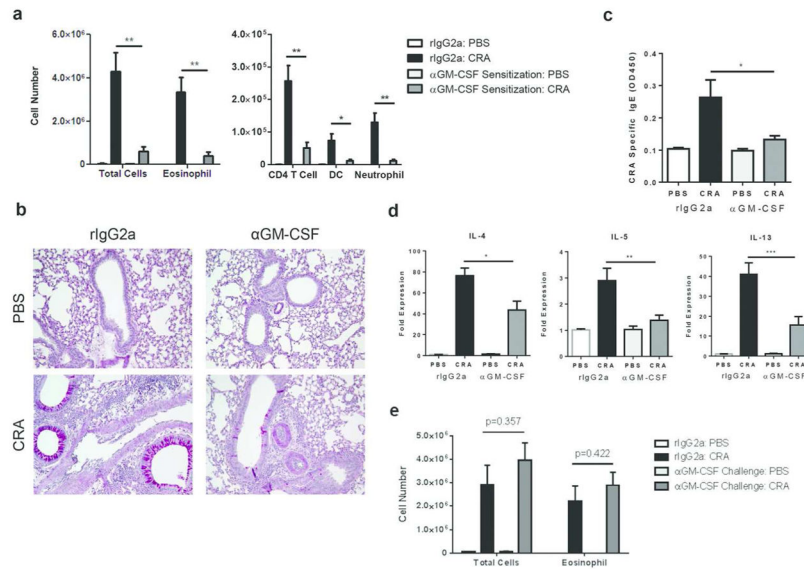


Figure 5. GM-CSF is required during allergic sensitization, but not challenge, in CRA-driven allergic airway disease. C57BL/6 mice were treated with rIgG2a or a neutralizing anti-GM-CSF antibody, five hours prior to sensitization. Mice were then sensitized and challenged with CRA and airway inflammation was analyzed 72 hours later. **(a)** BAL differential cell counts were determined by flow cytometry. **(b)** PAS staining of formalin-fixed and paraffin-embedded lung sections. Original magnification, x20. **(c)** Serum levels of CRA-specific IgE. **(d)** RNA was isolated from the lung and mRNA expression of IL-4, IL-5, and IL-13 was determined by qPCR. All expression values are relative to PBS control samples and normalized to the housekeeping gene GAPDH. Data represent combined data of two independent experiments, mean \pm SEM (n = 3–10 mice per group). **(e)** C57BL/6 mice were treated with rIgG2a or a neutralizing anti-GM-CSF antibody, five hours prior to challenge. After allergen challenge, BAL differential cell counts were determined by flow cytometry. Data represent combined data of two independent experiments, mean \pm SEM (n = 5–9 mice per group). Comparisons were made using unpaired Student's *t* test. * $p < 0.05$, ** $p < 0.01$, *** $p < 0.001$.

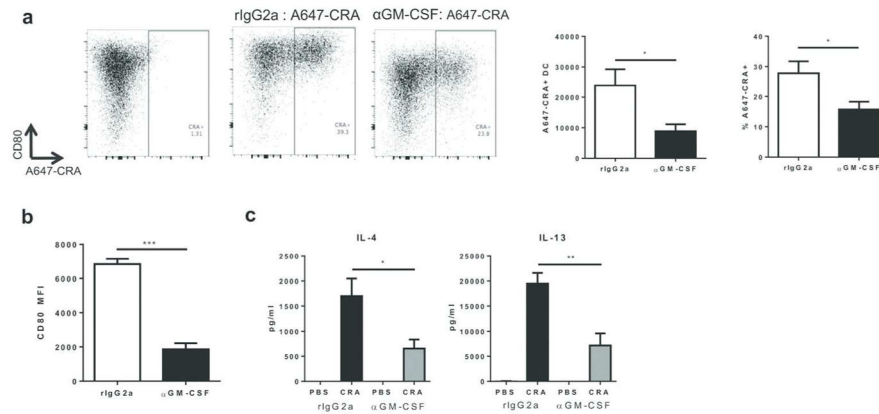


Figure 6. GM-CSF is required for optimal dendritic cell function and Th2 priming. C57BL/6 mice were treated with rIgG2a or a neutralizing anti-GM-CSF antibody, five hours prior to intranasal administration with A647-CRA. The draining lymph node was collected 24 hours later and cells were analyzed by flow cytometry to assess the uptake of CRA and maturation of DCs. DCs were gated as CD11c+ and MHCII+. **(a)** Total number of A647+ DCs and percent of A647+ DCs within the DC population. **(b)** Mean fluorescent intensity (MFI) of costimulatory molecule CD80 on A647+ DCs. Data represent combined data of two independent experiments, mean \pm SEM (n = 9 mice per group). **(c)** On days 0–2, C57BL/6 mice were sensitized with CRA. On day 3, the lung draining lymph node was collected and cells were restimulated with CRA. On day 7, culture supernatant was collected and concentration of IL-4 and IL-13 were determined by ELISA. Data represent mean \pm SEM of one experiment (n = 3–5 mice per group) and are representative of two independent experiments. Comparisons were made using unpaired Student's *t* test. * $p < 0.05$, ** $p < 0.01$, *** $p < 0.001$.

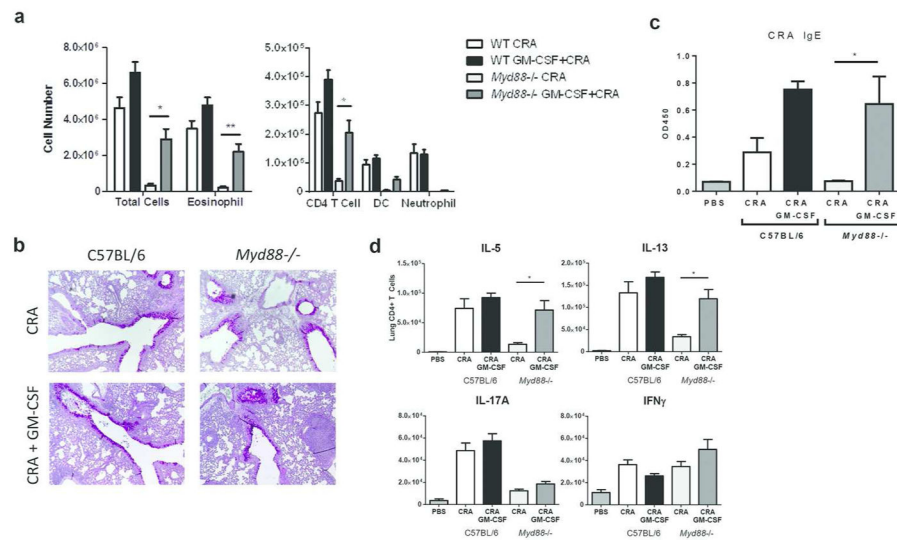


Figure 7. GM-CSF selectively rescues T_H2 allergic airway response to CRA in *Myd88*^{-/-} mice. C57BL/6 and *Myd88*^{-/-} mice were intranasally treated with or without 50 ng of GM-CSF during sensitization, which was administered along with CRA. Mice were challenged with CRA as usual. **(a)** BAL differential cell counts were determined by flow cytometry **(b)** PAS staining of formalin-fixed and paraffin-embedded lung sections. Original magnification, x10. **(c)** Serum CRA-specific IgE levels were determined by ELISA. **(d)** Number of lung CD4⁺ T cells positive for IL-5, IL-13, IL-17A, or IFN γ after restimulation with PMA and ionomycin. Data represent combined data of two independent experiments, mean \pm SEM (n = 7–11 mice per group). Comparisons were made using one-way ANOVA with Tukey posthoc test. * p < 0.05, ** p < 0.01.