

# Timely Cessation of Proton Pump Inhibitors in Critically Ill Patients Impacts Morbidity and Mortality: A Propensity Score-Matched Cohort Study\*

**OBJECTIVE:** Proton pump inhibitors (PPIs) are among the drugs most commonly used in critically ill patients. Although mainly applied temporarily for stress ulcer prophylaxis, their application is frequently not terminated. Potential adverse effects of PPI treatment could impact the outcome in case of unnecessary and, therefore, avoidable long-term continuation. We tested the hypotheses that nonindicated PPI therapy continued beyond hospital discharge is associated with increased morbidity, rehospitalization rate, and mortality.

**DESIGN:** Nationwide retrospective cohort study considering critically ill patients treated on German ICUs between January, 2017, and December, 2018 with a 2-year follow-up.

**SETTING:** A total of 591,207 patient datasets of a German healthcare insurer were screened.

**PATIENTS:** We identified 11,576 ICU patients who received PPI therapy for the first time during their index ICU stay without having an indication for its continuation.

**INTERVENTIONS:** The cohort was stratified into two groups: 1) patients without further PPI therapy and 2) patients with continuation of PPI therapy beyond 8 weeks after hospital discharge.

**MEASUREMENTS AND MAIN RESULTS:** Frequency of predescribed adverse events associated with PPI therapy, 1-year rehospitalization rate, and 2-year mortality were determined. The proportion of patients with continued PPI therapy without an objectifiable indication was 41.7% (4,825 of 11,576 patients). These patients had a 27% greater risk of pneumonia (odds ratio [OR] 1.27; 95% CI, 1.15–1.39;  $p < 0.001$ ) and a 17% greater risk of cardiovascular events (OR 1.17; 95% CI, 1.08–1.26;  $p < 0.001$ ). Continued PPI therapy was associated with a 34% greater risk of rehospitalization (OR 1.34; 95% CI, 1.23–1.47) and a nearly 20% greater 2-year mortality risk (hazard ratio 1.17; 95% CI, 1.08–1.27;  $p = 0.006$ ).

**CONCLUSIONS:** These data demonstrate that an unnecessary continuation of PPI therapy after hospital discharge may significantly impact morbidity and mortality. To avoid potentially harmful overuse of a PPIs, intensivists should ensure timely cessation of a temporarily indicated PPI therapy.

**KEYWORDS:** adverse effects; cessation; overuse, overtreatment; proton pump inhibitors

Proton pump inhibitors (PPIs) are among the most commonly prescribed medications, usually with a short-term indication and a recommended duration of less than 8 weeks (1–3). A major short-term indication is stress ulcer prophylaxis (SUP) (4), especially in ICUs, where certain critically

Lars Palmowski, MD<sup>1</sup>  
 Alexander von Busch, MD<sup>1</sup>  
 Matthias Unterberg, MD<sup>1</sup>  
 Lars Bergmann, MD<sup>1</sup>  
 Stefanie Schmitz, PhD<sup>2</sup>  
 Andreas Schlüter<sup>3</sup>  
 Jürgen Peters, MD<sup>4</sup>  
 Michael Adamzik, MD<sup>1</sup>  
 Tim Rahmel, MD<sup>1</sup>

\*See also p. 334.

Copyright © 2024 The Author(s). Published by Wolters Kluwer Health, Inc. on behalf of the Society of Critical Care Medicine and Wolters Kluwer Health, Inc. This is an open-access article distributed under the terms of the Creative Commons Attribution-Non Commercial-No Derivatives License 4.0 (CCBY-NC-ND), where it is permissible to download and share the work provided it is properly cited. The work cannot be changed in any way or used commercially without permission from the journal.

DOI: 10.1097/CCM.0000000000006104



## KEY POINTS

**Question:** Does unnecessary long-term continuation of newly initiated stress ulcer prophylaxis in the ICU impact on morbidity and mortality after hospital discharge?

**Findings:** This retrospective cohort study shows that a continued proton pump inhibitor therapy without indication after hospital discharge in former critically ill patients is frequent and associated with increased morbidity, higher 1-year rehospitalization rate and lower 2-year survival.

**Meaning:** To avoid potentially harmful overtreatment with proton pump inhibitors in previously critically ill patients, intensivists should ensure timely cessation of an only temporarily indicated pump inhibitor therapy.

ill patients are at increased risk of gastrointestinal bleeding (5–7). Although there is controversy about which patients in the ICU benefit from SUP, the latter is currently initiated in up to 90% of all critically ill patients (8–12). However, regardless of the debate on which ICU patients should receive PPI therapy, its timely cessation once the indication has expired is of utmost importance since PPI therapies not only result in an economic burden but may also evoke serious side effects (3, 13, 14). Greater risk of clostridium difficile infection (15–18), gastritis (17), pneumonia (15), cardiovascular events (19, 20), chronic renal failure (21, 22), greater frequency of various neoplasms (23–27), possibly malabsorption disorders evoking vitamin B12 deficiency (28, 29), hypocalcemia (30), and hypomagnesemia (30) are specific predescribed side effects of a long-term PPI therapy. Even an increased risk of mortality has been observed in retrospective studies (31–34).

Nevertheless, temporary PPI treatment started in an ICU is often continued over the further hospital course and, in some cases, even beyond hospital discharge (35, 36). This may inadvertently turn into an unnecessary permanent PPI medication as the initial indication, for example, SUP, no longer prevails (4, 37). Studies showed that approximately one-third of former ICU patients are discharged from the hospital with a continuing PPI therapy, but without an

appropriate ongoing indication (38). Because ICU patients are often characterized by various transfers and handovers between different departments until hospital discharge, they may particularly carry a high risk of missing the timely cessation of their PPI medication. However, to the best of our knowledge, there is no data that examines an intensive care cohort with new-onset SUP and unnecessary continuation beyond hospital discharge. It is unclear to what extent this pharmacologic overtreatment affects the long-term outcome of former critically ill patients. Accordingly, we tested former ICU patients to ascertain whether the hypotheses that continuation of a PPI therapy without an objectifiable indication beyond 8 weeks after hospital discharge is associated with: 1) an increased frequency of adverse effects, 2) a higher rehospitalization rate, or 3) increased mortality.

## MATERIALS AND METHODS

### Data Source and Study Design

We used health claims data from a large German health insurer in this retrospective cohort study. These data have been rigorously reviewed internally and externally (e.g., by the German medical service of public health insurances).

The study was reviewed and approved by the ethics committee of the Medical Faculty of the University of Bochum (ethics vote: number 21-7392-BR). The requirement for informed consent was waived due to the deidentified nature of the data.

### Patient Collective

A dataset covering 591,207 adult patients hospitalized between January 1, 2017, and December 31, 2018, was screened. We initially selected critically ill patients in need of a complex multimodal intensive care treatment (German OPS-Code 8-980 and 8-98f) and the initiation of PPI therapy during the ICU stay. Subsequently, we aimed to form a cohort of previously critically ill patients with the following characteristics:

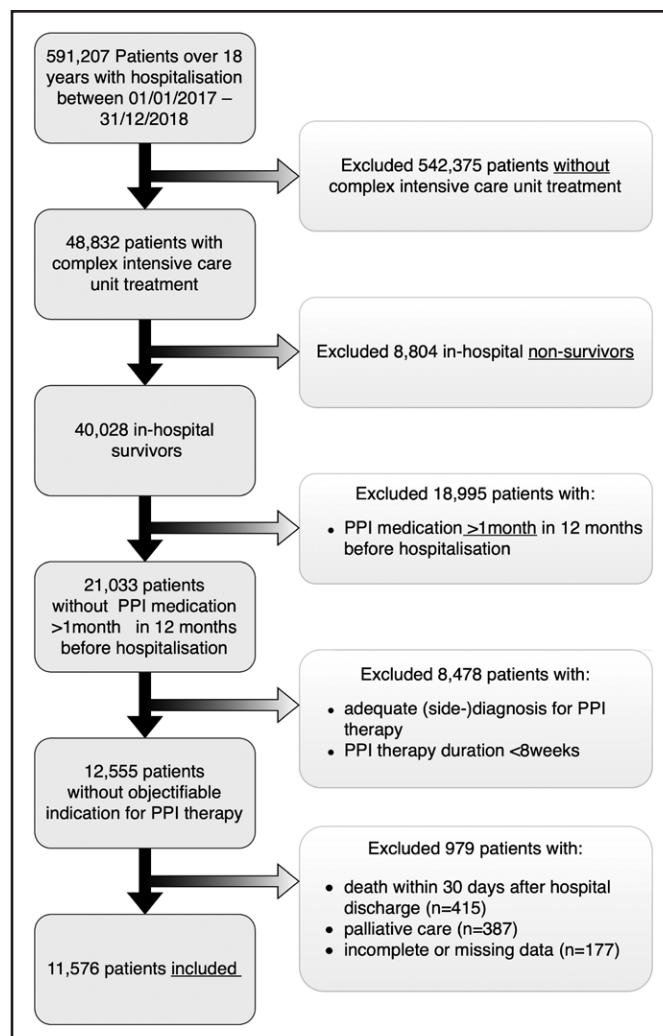
- 1) Not receiving PPI for a period of more than one month in the year prior to the index hospital admission.
- 2) Newly initiated PPI treatment during their ICU stay.
- 3) No coded indication for PPI therapy beyond eight weeks after hospital discharge.

The documented diagnoses and preexisting conditions were reviewed to identify the patients with a potentially inappropriate PPI therapy. All cases were identified using the *International Classification of Diseases*, 10th revision, German modification. We assessed our cohort regarding the indications listed in **eTable 1** (<http://links.lww.com/CCM/H451>) and deemed a PPI therapy as appropriate when at least one of these criteria applied to a patient. If the assessment revealed an appropriate objectifiable indication for a continued PPI therapy, these patients were excluded from our study so as to focus on temporary SUP (14). A total of 11,576 patients without missing values met the selection criteria mentioned above and were included in propensity score matching (**Fig. 1**).

Subsequently, all patients included ( $n = 11,576$ ) were screened for the presence of PPI therapy after hospital discharge using the documentation available. Patients were then allocated to two groups. Members of group 1 have not received any further PPI therapy beyond 8 weeks after hospital discharge, deemed as appropriate cessation of a short-term PPI treatment. Members of group 2 have received PPI therapy after hospital discharge without an objectifiable indication for at least 8 weeks after discharge, deemed as inappropriate continuation.

## Patient Matching

We performed a propensity score matching to compare outcomes between patients without PPI therapy and those who unnecessarily continued the therapy. Using the literature available, we created a directed acyclic graph model to determine which variables potentially impact the outcome and probability of receiving PPI. Using regression analyses, we identified relevant factors that we implemented in our propensity score model. These include age, gender, year of admission, Charlson index (39) before hospital admission, number of comorbidities before hospital admission and diagnoses acquired during the index stay, number of medications prescribed at hospital discharge, prescription of anticoagulation for at least 3 months after hospitalization, prescription of antiplatelet drugs for at least 3 months after hospitalization, prescription of nonsteroidal anti-inflammatory drugs for at least 3 months after hospitalization, prescription of corticosteroids for at least 3 months after



**Figure 1.** Data from 591,207 adult patients hospitalized between January 1, 2017, and December 31, 2018, were screened. A total of 48,832 patients who received intensive care treatment and survived the hospitalization were considered. Existing proton pump inhibitor (PPI) therapy before admission and an indication for PPI therapy after discharge led to exclusion. Palliative discharges, death within the first 30 days after discharge and incoherent or missing health claims data also led to exclusion. A total of 11,576 patients were included and allocated into two groups according to the presence of PPI therapy.

hospitalization, and the reason for their admission to the ICU. We included the case mix index of the hospital stay as an element for comparability of the disease severity, as it is a metric of the diversity, complexity and severity of the patients treated at a health-care facility. We achieved the best balance by using the logit of a logistic regression propensity score. Nearest neighbor matching using the propensity score difference as a distance measure to determine which control case is closest to each patient treated with PPI using a caliper width set at 20% of the SD

of the propensity scores. A 1:1 matching without replacement in a random order was used. The criteria by which a matching specification was judged were balance and remaining sample size after matching. The balance of the propensity score matching was assessed using the standardized mean difference, and standardized differences of no more than 10% were considered negligible imbalances between both groups. See **eTable 2** and **eFigure 1** (<http://links.lww.com/CCM/H451>) for a more detailed description of the matching procedure and the distribution of the propensity scores before and after matching.

## Outcome

We first analyzed the prevalence of the potential adverse effects of a continued PPI therapy within the first year after hospital discharge of the index admission mentioned above in both groups by assessment-confirmed medical diagnoses in a claim database as an outcome measure. Second, we determined the rehospitalization rate during the first year after discharge. Third, we assessed mortality rates within the first 2 years after hospital discharge.

## Statistics

Continuous variables are presented as means  $\pm$  SD in the case of normal distribution and as median and interquartile range (25th–75th percentile) in the case of non-normally distributed variables. Categorical variables were characterized by numbers (and percentages) and compared using the Chi-square test. Continuous variables were compared using Student *t* test for parametric variables, and the Mann-Whitney *U* test for nonparametric variables, as appropriate. An alpha error *p* value of less than 0.05 was considered statistically significant. Survival probabilities were graphically assessed by Kaplan-Meier curves and compared using a two-sided log-rank test. We used an univariate Cox regression to determine a crude hazard ratio ( $HR_{crude}$ ) between the propensity score-matched groups. Potential persistent confounders were determined in accordance with our baseline covariates, with a standardized difference of more than 10% indicating an insufficient covariate balance. Thereafter, we used a multivariate Cox regression analysis to determine an adjusted  $HR_{adj}$  with chronic kidney disease, diabetes mellitus, hypertension, and ischemic heart disease as

covariates to compare the survival between both propensity score-matched groups.

## RESULTS

### Patients Without Objectifiable PPI Indication

The proportion of patients on PPI therapy for at least 8 weeks after hospital discharge without objectifiable indication was 41.7% (4,825 of 11,576 patients). See **eTable 3** (<http://links.lww.com/CCM/H451>) for characteristics of the matched cohort. Characteristics of the unmatched cohort are available in **eTables 4** and **5** (<http://links.lww.com/CCM/H451>). The distribution of the 4,825 patients included long-term ( $> 8$  wk–1 yr) PPI therapy in 2,154 (45%) and permanent therapy ( $> 1$  yr) in 2,671 (55%) patients. Their baseline characteristics and outcomes are shown in **eTables 6** and **7** (<http://links.lww.com/CCM/H451>). We did not observe an association between medical, surgical, or cardiac surgery patients, nor between academic and nonacademic hospitals and a continuation of an SUP (**eTable 3**, <http://links.lww.com/CCM/H451>).

### Associations With Possible Adverse Effects of PPI Therapy

Focusing on cardiopulmonary diseases, patients with continued PPI therapy had a 27% greater risk of pneumonia (OR 1.27; 95% CI, 1.15–1.39;  $p < 0.001$ ) and a 17% greater risk of cardiovascular events (OR 1.17; 95% CI, 1.08–1.26;  $p < 0.001$ ).

Regarding renal disease, there was a 26% greater risk of developing chronic renal failure (OR 1.26; 95% CI, 1.12–1.41;  $p < 0.001$ ). There was no significant difference regarding acute intestinal nephritis (OR 1.21; 95% CI, 0.70–2.08;  $p = 0.69$ ).

Considering malignancies, a 2.7-fold increased risk of esophageal (OR 2.74; 95% CI, 1.37–5.47;  $p = 0.004$ ) and a 2.4-fold increased risk of pancreatic cancer (OR 2.44; 95% CI, 1.63–3.64;  $p < 0.001$ ) was associated with PPI therapy. The risk of colorectal cancer was increased by 19% (OR 1.19; 95% CI, 1.03–1.37;  $p = 0.006$ ), whereas there was no difference regarding gastric neoplasms (OR 0.87; 95% CI, 0.56–1.33;  $p = 0.51$ ).

When malabsorption was examined, a 1.3-fold increased risk of vitamin B12 deficiency (OR 1.30; 95% CI, 1.13–1.49;  $p < 0.001$ ), a 2.1-fold increased risk of hypomagnesemia (OR 2.11; 95% CI 1.24–3.60;

$p = 0.006$ ) and a 1.6-fold increased risk of hypocalcemia (OR 1.55; 95% CI, 1.22–1.96;  $p < 0.001$ ) were observed (Fig. 2).

### One-Year Rehospitalization Rate

A total of 3,544 of 4,825 patients with continued PPI therapy without objectifiable indication were readmitted to hospital within the first year, that is, a rehospitalization rate of 73.4%. This rate was 67.3% in the group without PPI therapy. This implies an absolute risk difference of 6.1% and an increased odd of rehospitalization of 35% (OR 1.35; 95% CI, 1.23–1.47;  $p < 0.001$ ) in the first year in association with continued unobjectifiable PPI therapy (Fig. 2).

### Two-Year Mortality Rate

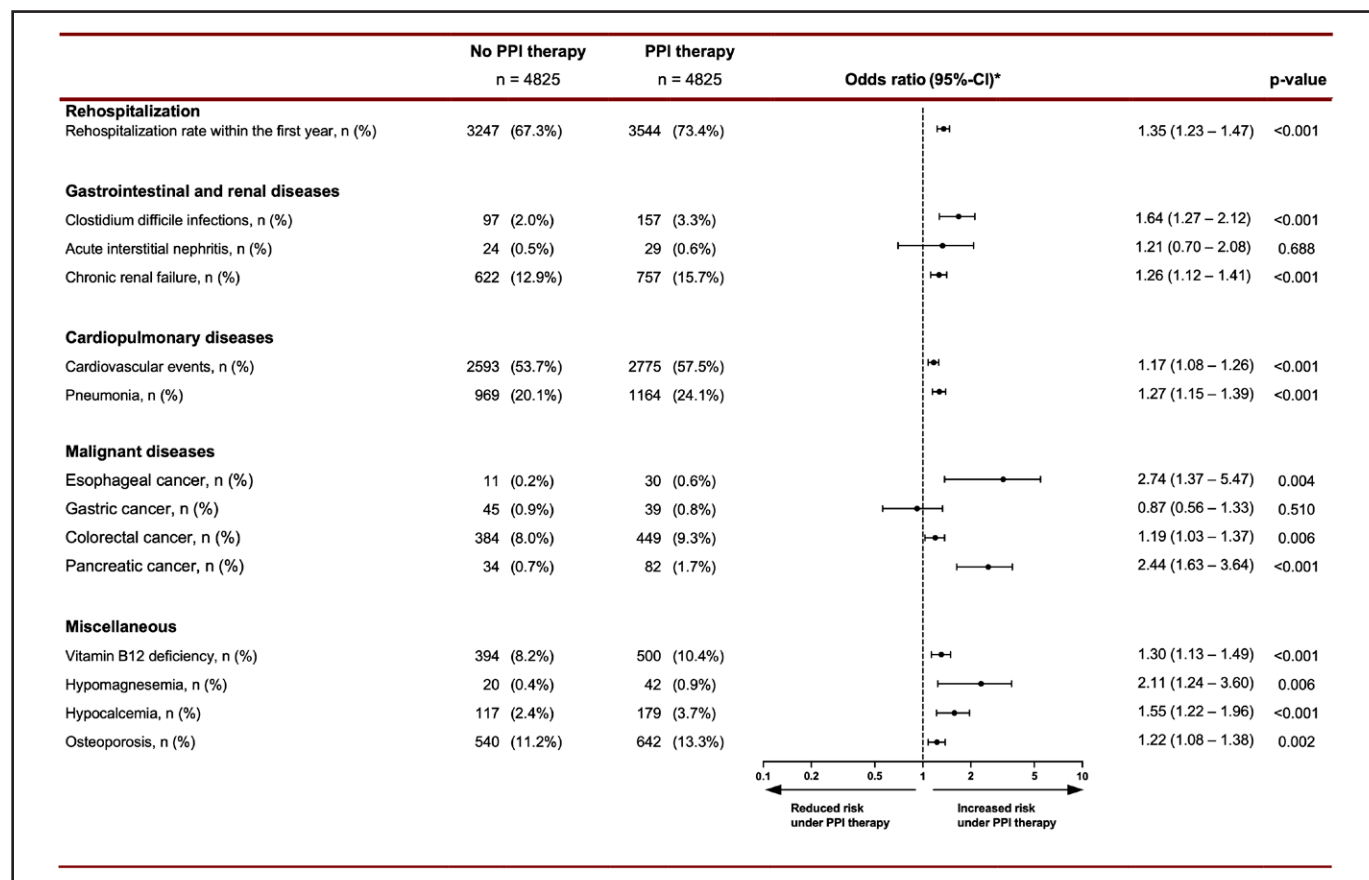
After 2 years, 72.5% of all patients (3,497 of 4,825) in the continued PPI therapy group were alive. By contrast, 74.7% patients (3,604 of 4,825) without PPI therapy survived. Accordingly, the continuation of PPI

therapy was associated with a nearly 20% increased 2-year mortality risk (HR<sub>adj</sub> 1.17; 95% CI, 1.08–1.27;  $p < 0.001$ ) (Fig. 3).

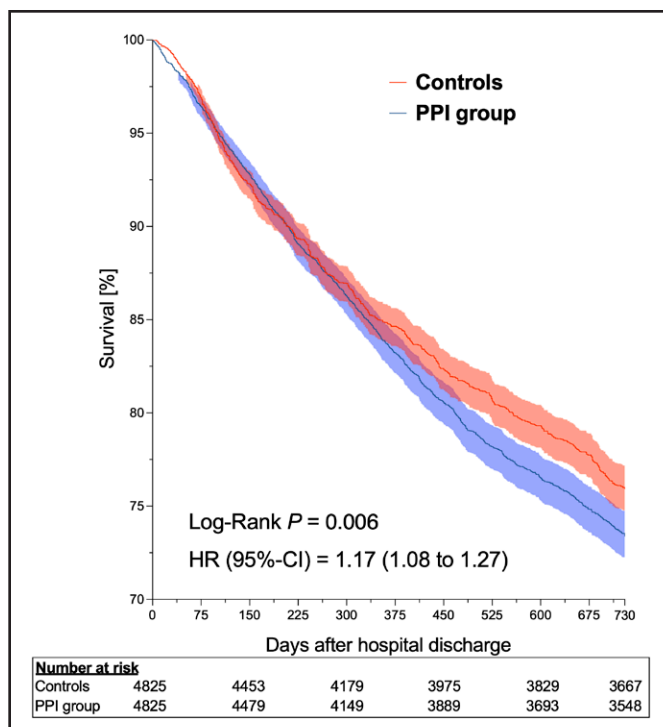
## DISCUSSION

The main findings of this study are: 1) there is a large number of former critically ill patients who have received PPI therapy beyond 8 weeks of hospital discharge without objectifiable indication and 2) the continuation of PPI therapy without clear indication is associated with serious morbidity, an increased 1-year rehospitalization rate and increased 2-year mortality rate.

Focusing on a large and important cohort of former critically ill patients, our study revealed that a continued PPI therapy may significantly impact outcome and sequelae. We clearly illustrate that timely cessation of a temporarily indicated PPI treatment, for example, in terms of SUP, is of utmost importance but often neglected in clinical routine. In this context, our study



**Figure 2.** Frequency of rehospitalization and a selection of possible sequelae of proton pump inhibitor (PPI) with the resulting odds ratios and 95% CIs. The “no PPI therapy” group did not receive any further PPI therapy after hospital discharge. The “PPI therapy” group included patients in whom PPI therapy was started during hospital stay and continued for at least 8 weeks after discharge.



**Figure 3.** Kaplan-Meier estimator for a 2-year mortality rate with depiction of patients without proton pump inhibitor (PPI) therapy (red color) as well as those with unobjectifiable PPI therapy indication (blue color), where PPI therapy started within the hospital and was continued for at least 8 weeks after discharge. At 2 years after discharge from the index hospitalization, continued PPI therapy without an objectifiable indication was associated with a 17% increased 2-year mortality risk. HR = hazard ratio.

is the first that focuses exclusively on potentially inappropriate prescribing patterns in critically ill patients after the ICU and hospital discharge. It is alarming that a routine intervention such as the cessation of PPI treatments can become a major burden, which is even more unacceptable for the vulnerable group of former ICU patients.

Our results particularly include an association with an increased risk of the occurrence of cardiorespiratory diseases, such as a nearly 30% greater risk of pneumonia. While this magnitude of risk is lower than those of recent meta-analyses, which report an up to two-fold greater risk of developing community-acquired pneumonia (40), the smaller effect in our study may be partially explained by the a priori high frequency of community-acquired pneumonia of about 20% in former ICU patients even without PPI therapy in the first year after discharge. Additionally, we used a complex matching procedure allowing the

implication of as many pertinent confounders as possible to avoid a biased overinterpretation of our data to achieve sufficient comparability between both groups. Consequently, our statistical approach appears more conservative compared with the studies included in the referenced meta-analysis (40). Nevertheless, PPI therapy for no objectifiable reason increases our observed baseline of a 20% pneumonia rate in the first year after hospital discharge to almost a quarter of all cases, which implies an important harmful impact for our population of former critically ill patients.

Analogous to pneumonia, our cohort without PPI already shows a high vulnerability with a risk of more than 50% for cardiovascular events in the first year after discharge. This is increased by nearly another 20% in association with an PPI treatment. In this context, a high-risk group for new or recurrent cardiovascular events had already been excluded from our study due to receiving dual antiplatelet therapy as part of their acute and postacute treatment and, therefore, having a potential indication for PPI therapy (41).

Our results are consistent with a recent meta-analysis reporting a 22% increased risk of cardiovascular events associated with PPI therapy in different populations and settings across the heterogeneous field of literature (42). Based on these findings, the concerningly increased risk of 35% for hospital readmission in the first year after hospital discharge found in our study seems a logical consequence, with pneumonia and cardiovascular events being the leading causes of hospital readmissions after ICU care (43).

However, the evidence and plausibility of some of the adverse effects of a PPI treatment mentioned above are being controversially debated based on the mostly observational or retrospective design of the studies currently available. In particular, associations of neoplasia with PPI therapy are situated in a heterogeneous data setting. Here, our balanced and conservative statistical approach detected no significant associations with gastric carcinomas and a continued PPI therapy, although it is frequently reported in other studies (44). However, our findings are in accordance with the results of a recent meta-analysis by Piovani et al (45). They also could not demonstrate a significant association between gastric cancer and PPIs when considering age, sex and at least two additional potential confounders lying on the causal pathway of gastric

cancer development. In doing so, they followed an approach similar to ours, in which we considered 12 variables for propensity score matching and achieved a fair level of comparability without significant differences between both groups (eTable 3, <http://links.lww.com/CCM/H451>). Regarding mortality, although a recent prospective study failed to demonstrate an impact of PPI therapy on mortality in ICU patients when evaluating 90-day survival (11), the observation period of 2 years after hospital discharge is a further strength of our study. Within the first 90 days up to the first year after hospital discharge, these results are congruent with our data, as we did not find an impact on mortality during this period. Consideration of the second year after discharge appears to be of importance, as the mortality differences were particularly presented here. This finding lines up with observational studies showing an increasing risk of mortality with an increasing duration of a PPI therapy (32).

Regardless of the controversy surrounding the evidence and study quality, our study reinforces the potentially harmful impact of PPI therapy. This becomes more important as our study focuses exclusively on patients who did not require further PPI treatment after hospital discharge.

With 41.7% (4,825 of 11,576) of former ICU patients discharged from the hospital with ongoing unnecessary PPI therapy for longer than 8 weeks, the question arises as to why this problem occurs so frequently. Unfortunately, due to the nature of the claims data analyzed of a large German healthcare insurer operating nationwide, we cannot pinpoint the causality between the source of the problem and physicians' behavior. Nevertheless, we tried to exclude the most significant confounders that may bias the proper interpretation of our data, for example, limiting our observation period so as to minimize any impact of different or changing coding and prescribing patterns over time.

Previous attempts to explain why a temporarily intended PPI therapy has not been ceased after an ICU stay include a lack of documentation of the PPI indication, knowledge gaps of the responsible physician regarding recommended guidelines and insufficient physician time to review the patients' complete medical history (46, 47). A potential strategy to avoid an unnecessary long-term PPI therapy may be to stop temporary medication orders prior to transfer from the ICU to the ward if appropriate. If this is not applicable

due to an ongoing indication for PPI, discharge letters should explicitly include the indication and the suggested duration of such a prescription. In this way, the ward physicians who continue the patient's treatment can find out immediately how long the therapy is suggested by the initiating intensive care physician.

Regular staff training, visits by clinical pharmacists and the establishment of standard operating procedures have already shown to significantly decrease unnecessary PPI prescriptions (48–50). These studies consistently demonstrate that inappropriate continuation of PPI therapy can be decreased by simple but targeted interventions, and the sufficient vigilance of attending physicians is decisive. Thus, our data call for an immediate improvement to avoid potential harm related to an unnecessary PPI overtreatment.

## LIMITATION

Despite the inclusion of all possible indications for PPI therapy, the retrospective design of our study may not completely rule out that PPI continuation was still reasonable in individual cases. In addition, despite great statistical efforts made to control all pertinent confounders, we cannot entirely exclude a residual bias, even after our conservative statistical approach to adjust for intergroup imbalances. Health claim data do not include information on several important clinical factors, such as laboratory values or more detailed disease severity (e.g., Sequential Organ Failure Assessment Score). Therefore, the data may be susceptible to biased patient selection and limited patient stratification. Furthermore, it must be considered that our retrospective study design only supports associations and does not necessarily describe causality. Thus, we cannot exclude uncertainty about some PPI-associated posthospital diagnoses (e.g., cancer). To overcome these uncertainties, additional analyses in diverse populations will be important to confirm these findings. Such studies would ideally be prospective and allow the collection of detailed data on additional potential confounders, such as comorbidities and conditions acquired during the hospital stay. However, randomizing patients to prolonged unnecessary PPI therapy in an upcoming randomized controlled trial might not be ethically feasible. Causal inference models may be particularly helpful here for analysis if randomized controlled trials are not

feasible. In addition, it must be mentioned that only PPI drugs were considered in our study. Histamine-2-receptor antagonists are also commonly used for SUP, and these should be assessed in further studies. It would also be of great interest to elucidate any risk factors that influence whether a SUP is stopped in a timely manner or not. Finally, although our data showed significant associations with adverse effects, they do not provide specific insights into why PPI therapy is so often administered without an objectifiable indication. Further work, for example, in the form of surveys, is needed to investigate the causes of the overprescribing practice observed.

## CONCLUSIONS

Our results demonstrate an excessive overtreatment with PPI in prior critically ill ICU patients following 8 weeks after hospital discharge, with a lack of indication for PPI treatment in a large proportion of patients. This may be due to an unreflective continuation of PPI therapy started in the ICU, which results in remarkable harm with multiple adverse effects, increased readmission to hospital and an increased 2-year mortality. These data force the vigilance of the ICU physician toward communication and interventions ensuring timely cessation of an only temporarily indicated PPI therapy.

- 1 Klinik für Anästhesiologie, Intensivmedizin und Schmerztherapie, Universitätsklinikum Knappschaftskrankenhaus Bochum, Bochum, Germany.
- 2 Abteilung I - Kranken und Pflegeversicherung, Knappschaft, Bochum, Germany.
- 3 Hauptverwaltung, Knappschaft Kliniken GmbH, Recklinghausen, Germany.
- 4 Via delle Volpi, Laveno-Mombel, Italy.

Supplemental digital content is available for this article. Direct URL citations appear in the printed text and are provided in the HTML and PDF versions of this article on the journal's website (<http://journals.lww.com/ccmjournal>).

Drs. Palmowski and Rahmel, von Busch, Schmitz were involved in conceptualization. Drs. Palmowski, Rahmel, and Peters were involved in writing the original draft. Drs. Palmowski, Rahmel, Peters, Unterberg, Bergmann, Adamzik, and Schmitz were involved in revision of original draft. Drs. Schmitz, Schlüter, Rahmel, and von Busch were involved in data generation and patient recruitment. Drs. Palmowski, Rahmel, Schmitz, and von Busch were involved in data analysis. Drs. Bergmann, Unterberg, Adamzik, and Schlüter were involved in supervision.

Dr. Unterberg received funding from CSL Behring. Dr. Schmitz disclosed work for hire. The remaining authors have disclosed that they do not have any potential conflicts of interest.

For information regarding this article, E-mail: [Tim.Rahmel@ruhr-uni-bochum.de](mailto:Tim.Rahmel@ruhr-uni-bochum.de)

The study was reviewed and approved by the ethics committee of the Medical Faculty of the University of Bochum (ethics vote: number 21-7392-BR). The requirement for informed consent was waived due to the deidentified nature of the datasets.

The dataset analyzed during the current study is available from the corresponding author on reasonable request.

## REFERENCES

1. Safer DJ: Overprescribed medications for US adults: Four major examples. *J Clin Med Res* 2019; 11:617–622
2. Targownik LE, Fisher DA, Saini SD: AGA clinical practice update on de-prescribing of proton pump inhibitors: Expert review. *Gastroenterology* 2022; 162:1334–1342
3. Savarino V, Marabotto E, Zentilin P, et al: Proton pump inhibitors: Use and misuse in the clinical setting. *Expert Rev Clin Pharmacol* 2018; 11:1123–1134
4. Barletta JF, Bruno JJ, Buckley MS, et al: Stress ulcer prophylaxis. *Crit Care Med* 2016; 44:1395–1405
5. Krag M, Perner A, Wetterslev J, et al; SUP-ICU Collaborators: Stress ulcer prophylaxis in the intensive care unit: An international survey of 97 units in 11 countries: Stress ulcer prophylaxis in the ICU. *Acta Anaesthesiol Scand* 2015; 59:576–585
6. Cook DJ, Fuller HD, Guyatt GH, et al: Risk factors for gastrointestinal bleeding in critically ill patients. *N Engl J Med* 1994; 330:377–381
7. Plummer MP, Blaser A, Deane AM: Stress ulceration: Prevalence, pathology and association with adverse outcomes. *Crit Care* 2014; 18:213
8. Krag M, Perner A, Wetterslev J, et al; SUP-ICU co-authors: Prevalence and outcome of gastrointestinal bleeding and use of acid suppressants in acutely ill adult intensive care patients. *Intensive Care Med* 2015; 41:833–845
9. Ben-Menachem T, Fogel R, Patel RV, et al: Prophylaxis for stress-related gastric hemorrhage in the medical intensive care unit: A randomized, controlled, single-blind study. *Ann Intern Med* 1994; 121:568–575
10. Quenot JP, Thiery N, Barbar S: When should stress ulcer prophylaxis be used in the ICU?. *Curr Opin Crit Care* 2009; 15:139–143
11. Krag M, Marker S, Perner A, et al; SUP-ICU trial group: Pantoprazole in patients at risk for gastrointestinal bleeding in the ICU. *N Engl J Med* 2018; 379:2199–2208
12. Frandah W, Colmer-Hamood J, Nugent K, et al: Patterns of use of prophylaxis for stress-related mucosal disease in patients admitted to the intensive care unit. *J Intensive Care Med* 2014; 29:96–103
13. Heidelbaugh JJ, Goldberg KL, Inadomi JM: Magnitude and economic effect of overuse of antisecretory therapy in the ambulatory care setting. *Am J Manag Care* 2010; 16:e228–e234
14. Shin S: Evaluation of costs accrued through inadvertent continuation of hospital-initiated proton pump inhibitor therapy for stress ulcer prophylaxis beyond hospital discharge: A retrospective chart review. *Ther Clin Risk Manag* 2015; 11:649–657



15. MacLaren R, Reynolds PM, Allen RR: Histamine-2 receptor antagonists vs proton pump inhibitors on gastrointestinal tract hemorrhage and infectious complications in the intensive care unit. *JAMA Intern Med* 2014; 174:564–574
16. Seo SI, You SC, Park CH, et al: Comparative risk of *Clostridium difficile* infection between proton pump inhibitors and histamine-2 receptor antagonists: A 15-year hospital cohort study using a common data model. *J Gastroenterol Hepatol* 2020; 35:1325–1330
17. Kuipers EJ, Uytendaele AM, Peña AS, et al: Increase of *helicobacter pylori*-associated corpus gastritis during acid suppressive therapy: Implications for long-term safety. *Am J Gastroenterol* 1995; 90:1401–1406
18. McDonald EG, Milligan J, Frenette C, et al: Continuous proton pump inhibitor therapy and the associated risk of recurrent *Clostridium difficile* infection. *JAMA Intern Med* 2015; 175:784–791
19. Charlot M, Ahlehoff O, Norgaard ML, et al: Proton-pump inhibitors are associated with increased cardiovascular risk independent of clopidogrel use: A nationwide cohort study. *Ann Intern Med* 2010; 153:378–386
20. Zhu W, Hong K: Potential cardiovascular risks of proton pump inhibitors in the general population. *Int Heart J* 2017; 58:163–166
21. Lazarus B, Chen Y, Wilson FP, et al: Proton pump inhibitor use and the risk of chronic kidney disease. *JAMA Intern Med* 2016; 176:238–246
22. Hart E, Dunn TE, Feuerstein S, et al: Proton pump inhibitors and risk of acute and chronic kidney disease: A retrospective cohort study. *Pharmacotherapy* 2019; 39:443–453
23. Poly TN, Islam MM, Walther BA, et al: Proton pump inhibitors use and the risk of pancreatic cancer: Evidence from eleven epidemiological studies, comprising 15 million individuals. *Cancers* 2022; 14:5357
24. Gao H, Li L, Geng K, et al: Use of proton pump inhibitors for the risk of gastric cancer. *Medicine (Baltim)* 2022; 101:e32228
25. Holmberg D, Mattsson F, Xie S, et al: Risk of gastric and oesophageal adenocarcinoma following discontinuation of long-term proton-pump inhibitor therapy. *J Gastroenterol* 2022; 57:942–951
26. Islam MM, Poly TN, Walther BA, et al: Adverse outcomes of long-term use of proton pump inhibitors: A systematic review and meta-analysis. *Eur J Gastroenterol Hepatol* 2018; 30:1395–1405
27. Sasaki T, Mori S, Kishi S, et al: Effect of proton pump inhibitors on colorectal cancer. *IJMS* 2020; 21:3877
28. Mumtaz H, Ghafoor B, Saghir H, et al: Association of vitamin B12 deficiency with long-term PPIs use: A cohort study. *Ann Med Surg* 2022; 82:104762
29. Jung SB, Nagaraja V, Kapur A, et al: Association between vitamin B12 deficiency and long-term use of acid-lowering agents: A systematic review and meta-analysis: Vitamin B12 deficiency. *Intern Med J* 2015; 45:409–416
30. Ito T, Jensen RT: Association of long-term proton pump inhibitor therapy with bone fractures and effects on absorption of calcium, vitamin B12, iron, and magnesium. *Curr Gastroenterol Rep* 2010; 12:448–457
31. Xie Y, Bowe B, Yan Y, et al: Estimates of all cause mortality and cause specific mortality associated with proton pump inhibitors among US veterans: Cohort study. *BMJ* 2019; 365:l1580
32. Ngwenya S, Simin J, Brusselaers N: Maintenance proton pump inhibitor use associated with increased all-cause and cause-specific mortality in Sweden. *Dig Dis Sci* 2023; 68:2252–2263
33. Xie Y, Bowe B, Li T, et al: Risk of death among users of proton pump inhibitors: A longitudinal observational cohort study of United States veterans. *BMJ Open* 2017; 7:e015735
34. Maggio M, Corsonello A, Ceda GP, et al: Proton pump inhibitors and risk of 1-year mortality and rehospitalization in older patients discharged from acute care hospitals. *JAMA Intern Med* 2013; 173:518–523
35. Zink DA, Pohlman M, Barnes M, et al: Long-term use of acid suppression started inappropriately during hospitalization. *Aliment Pharmacol Ther* 2005; 21:1203–1209
36. Wohlt PD, Hansen LA, Fish JT: Inappropriate continuation of stress ulcer prophylactic therapy after discharge. *Ann Pharmacother* 2007; 41:1611–1616
37. Ramirez E, Lei S H, Borobia A M, et al: Overuse of PPIs in patients at admission, during hospitalisation, and at discharge in a tertiary Spanish hospital. *CCP* 2010; 5:288–297
38. Blackett JW, Faye AS, Phipps M, et al: Prevalence and risk factors for inappropriate continuation of proton pump inhibitors after discharge from the intensive care unit. *Mayo Clin Proc* 2021; 96:2550–2560
39. Charlson ME, Pompei P, Ales KL, et al: A new method of classifying prognostic comorbidity in longitudinal studies: Development and validation. *J Chronic Dis* 1987; 40:373–383
40. Nguyen PA, Islam M, Galvin CJ, et al: Meta-analysis of proton pump inhibitors induced risk of community-acquired pneumonia. *Int J Qual Health Care* 2020; 32:292–299
41. Levine GN, Bates ER, Bittl JA, et al: 2016 ACC/AHA Guideline Focused Update on Duration of Dual Antiplatelet Therapy in Patients With Coronary Artery Disease: A Report of the American College of Cardiology/American Heart Association Task Force on Clinical Practice Guidelines: An Update of the 2011 ACCF/AHA/SCAI Guideline for Percutaneous Coronary Intervention, 2011 ACCF/AHA Guideline for Coronary Artery Bypass Graft Surgery, 2012 ACC/AHA/ACP/AATS/PCNA/SCAI/STS Guideline for the Diagnosis and Management of Patients With Stable Ischemic Heart Disease, 2013 ACCF/AHA Guideline for the Management of ST-Elevation Myocardial Infarction, 2014 AHA/ACC Guideline for the Management of Patients With Non-ST-Elevation Acute Coronary Syndromes, and 2014 ACC/AHA Guideline on Perioperative Cardiovascular Evaluation and Management of Patients Undergoing Noncardiac Surgery. *Circulation* 2016; 134:134
42. Li S, Liu F, Chen C, et al: Real-world relationship between proton pump inhibitors and cerebro-cardiovascular outcomes independent of clopidogrel: A meta-analysis of observational studies. *Int Heart J* 2019; 60:910–918
43. Hirshberg EL, Wilson EL, Stanfield V, et al: Impact of critical illness on resource utilization: A comparison of use in the year before and after ICU admission\*. *Crit Care Med* 2019; 47:1497–1504

44. Peng TR, Wu TW, Li CH: Association between proton-pump inhibitors and the risk of gastric cancer: A systematic review and meta-analysis. *Int J Clin Oncol* 2023; 28:99–109
45. Piovani D, Tsantes AG, Schünemann HJ, et al: Meta-analysis: Use of proton pump inhibitors and risk of gastric cancer in patients requiring gastric acid suppression. *Aliment Pharmacol Ther* 2023; 57:653–665
46. Wermeling M, Himmel W, Behrens G, et al: Why do GPs continue inappropriate hospital prescriptions of proton pump inhibitors? A qualitative study. *Eur J Gen Pract* 2014; 20:174–180
47. Nallapeta N, Reynolds JL, Bakhai S: Deprescribing proton pump inhibitors in an academic, primary care clinic: Quality improvement project. *J Clin Gastroenterol* 2020; 54:864–870
48. Regal RE, Osta AD, Parekh VI: Interventions to curb the overuse of Acid-suppressive medications on an inpatient general medicine service. *P T* 2010; 35:86–90
49. Atkins R, Smith L: Impact of pharmacy intervention on the use of proton-pump inhibitors in the hospital setting. *Consult Pharm* 2013; 28:786–792
50. Schmidt A, Bücken B, Maas M, et al: Patients' perspectives on a patient-oriented electronic decision support tool to reduce overuse of proton pump inhibitors (arriba-PPI): A qualitative study in primary care. *BMC Prim Care* 2023; 24:33