

# Prognostic value of lactate dehydrogenase for melanoma patients receiving anti-PD-1/PD-L1 therapy

## A meta-analysis

Jun Xu, BM<sup>a</sup>, Jianguo Zhao, MM<sup>b</sup>, Jianfang Wang, BM<sup>b</sup>, Caiping Sun, BM<sup>b</sup>, Xiaoling Zhu, MM<sup>b,\*</sup> 

### Abstract

**Background:** Several studies indicate the level of pretreatment lactate dehydrogenase (LDH) may be associated with the prognosis of patients receiving immune checkpoint inhibitors targeting programmed death receptor-1 (PD-1)/programmed death ligand 1 (PD-L1) which had been reported to dramatically improve the survival of patients with advanced or metastatic melanoma; however, no consensus has been reached because the presence of controversial conclusions. This study was to perform a meta-analysis to comprehensively explore the prognostic values of LDH for melanoma patients receiving anti-PD1/PD-L1 monotherapy.

**Methods:** A systematic electronic search in the databases of PubMed, EMBASE and the Cochrane library was performed to identify all related articles up to April, 2020. The pooled hazard ratios (HRs) and 95% confidence intervals (CIs) were obtained to assess the prognostic values of pretreatment LDH in blood for overall survival (OS) and progression-free survival (PFS).

**Results:** A total of 22 eligible studies involving 2745 patients were included. Of them, 19 studies with 20 results assessed the OS and the pooled analysis showed that an elevated pretreatment LDH level was significantly associated with a worse OS (HR=2.44; 95% CI: 1.95–3.04,  $P < .001$ ). Thirteen studies reported PFS and meta-analysis also revealed that a higher pretreatment LDH level predicted a significantly shorter PFS (HR, 1.61; 95% CI, 1.34–1.92;  $P < .001$ ). Although heterogeneity existed among these studies, the same results were acquired in subgroup analyses based on sample size, country, study design, cut-off of LDH, type of PD-1/PD-L1 inhibitors and statistics for HRs (all HRs  $> 1$  and  $P < .05$ ).

**Conclusion:** This meta-analysis suggests LDH may serve as a potential biomarker to identify patients who can benefit from anti-PD-1/PD-L1 and then schedule treatments.

**Abbreviations:** CI = confidence interval, CTLA4 = cytotoxic T-lymphocyte antigen 4, HR = hazard ratios, ICIs = immune checkpoint inhibitors, LDH = lactate dehydrogenase, NOS = Newcastle-Ottawa Scale, OS = overall survival, PD-1 = programmed death 1, PD-L1 = programmed death ligand 1, PFS = progression-free survival, ULN = upper limit of normal.

**Keywords:** lactate dehydrogenase, melanoma, prognosis, programmed death ligand 1, programmed death receptor-1

Editor: Shigao Huang.

The authors have no funding and conflicts of interest to disclose.

All data generated or analyzed during this study are included in this published article [and its supplementary information files].

<sup>a</sup> Department of Radiotherapy, <sup>b</sup> Department of Oncology Radiotherapy, Shaoxing People's Hospital, Shaoxing, Zhejiang Province, China.

\* Correspondence: Xiaoling Zhu, Department of Oncology Radiotherapy, Shaoxing People's Hospital, No. 568 Zhongxing North Road, Shaoxing 312000, Zhejiang Province, China (e-mail: 15005851373@163.com).

Copyright © 2021 the Author(s). Published by Wolters Kluwer Health, Inc. This is an open access article distributed under the terms of the Creative Commons Attribution-Non Commercial License 4.0 (CCBY-NC), where it is permissible to download, share, remix, transform, and buildup the work provided it is properly cited. The work cannot be used commercially without permission from the journal.

How to cite this article: Xu J, Zhao J, Wang J, Sun C, Zhu X. Prognostic value of lactate dehydrogenase for melanoma patients receiving anti-PD-1/PD-L1 therapy: a meta-analysis. *Medicine* 2021;100:14(e25318).

Received: 5 October 2020 / Received in final form: 31 January 2021 / Accepted: 2 March 2021

<http://dx.doi.org/10.1097/MD.00000000000025318>

## 1. Introduction

Melanoma is the third most common type of skin cancer (after squamous cell carcinoma and basal cell carcinoma).<sup>[1,2]</sup> Nevertheless, it represents the leading cause of skin cancer-related death,<sup>[2,3]</sup> which may be partially attributed to its capacity to metastasize to distant organs. Although there were no curative options for unresectable or metastatic melanoma, the advent of agents targeting the immune system has been reported to dramatically improve the prognosis of patients.<sup>[4–6]</sup> Clinically used immune checkpoint inhibitors (ICIs) include monoclonal antibodies against cytotoxic T-lymphocyte antigen 4 (CTLA4) (i.e. ipilimumab), programmed death 1 (PD-1) (i.e. nivolumab and pembrolizumab)<sup>[4–6]</sup> and programmed death ligand 1 (PD-L1) (i.e. atezolizumab, durvalumab and avelumab).<sup>[7,8]</sup> Compared with ipilimumab, the anti-PD-1/PD-L1, as single agents, had higher clinical activity to improve the overall survival (OS), progression-free survival (PFS) and induce less adverse events.<sup>[9,10]</sup> Also, the toxicity was increased in the combination group compared to either single agent anti-CTLA4 or anti-PD-1

antibodies.<sup>[9,11]</sup> Therefore, single agent PD-1/PD-L1 antibodies may be more cost-effective<sup>[12]</sup> and acceptable<sup>[13]</sup> for patients with advanced or metastatic melanoma. Unfortunately, there were still approximately 65% of patients who could not benefit from the anti-PD-1/PD-L1 monotherapy.<sup>[8,14]</sup> Therefore, identifying predictive biomarkers for response to PD-1/PD-L1 inhibitors may be beneficial in guiding treatment selections.

Enhanced aerobic glycolysis (known as the Warburg effect) is the major pathway to provide the metabolic energy for cancer cells to achieve fast proliferation and metastasis. Lactate dehydrogenase (LDH) is an essential metabolic enzyme during the Warburg effect, which catalyzes the reversible conversion of pyruvate into lactate. Also, the accumulated lactate was proved to promote tumor immune escape by reducing the survival and cytolytic capacity of CD8+ T cells and natural killer cells.<sup>[15,16]</sup> Accordingly, we speculate that a high level of LDH in cancer patients may antagonize the effects of anti-PD-1/PD-L1 antibodies (which can prevent T-cell exhaustion by inhibiting the expression of PD-1/PD-L1)<sup>[17]</sup> and lead to a poor prognosis.<sup>[18]</sup> This potential prognostic value of LDH was verified in several studies on melanoma. For example, Chasseuil et al, reported that an increased pretreatment LDH level was significantly associated with a decreased OS [hazard ratios (HR)=1.31; 95% confidence interval (CI)=1.18 – 1.45;  $P=.01$ ] and PFS (HR=1.25; 95% CI: 1.13 – 1.38;  $P=.01$ ) in patients with advanced melanoma after treatment with nivolumab.<sup>[19]</sup> The similar conclusion was also confirmed in the studies of Capone et al,<sup>[20]</sup> Ridolfi et al,<sup>[21]</sup> Ascierto et al,<sup>[22]</sup> Suo et al,<sup>[23]</sup> Cowey et al<sup>[24]</sup> and Seremet et al<sup>[25]</sup> who investigated the association between LDH level and outcomes of nivolumab or pembrolizumab treatment. However, whether LDH can serve as a prognostic biomarker for melanoma patients treated with anti-PD-1/PD-L1 antibodies, remains uncertain because some evidence suggested no significant correlations between pretreatment LDH and OS/PFS.<sup>[26–28]</sup> These conflicting results may be associated with small sample sizes in each individual study or their heterogeneity in study designs.

The goal of this study was to perform a meta-analysis to reassess the prognostic value of LDH for melanoma patients treated with anti-PD-1/PD-L1 antibodies. Meta-analysis of all evidence may overcome the limitation from the small sample sizes in individual studies and increase the statistical power and hereby, the resultant conclusion may be believable. Furthermore, the subgroup analysis was also performed for studies with consistent designs to further confirm the conclusion.

## 2. Materials and methods

### 2.1. Search strategies

A systematic electronic search in the databases of PubMed, EMBASE and the Cochrane library was performed to identify all related articles published up to April, 2020, in accordance with the Preferred Reporting Items for Systematic Review and Meta-analysis. The combined search terms were as follows: (“immunotherapy” OR “immune checkpoint inhibitors” OR “programmed death ligand-1” OR “programmed death-1 receptor” OR “PD-1 inhibitor” OR “PD-L1 inhibitor” OR “anti-PD-1 antibodies” OR “nivolumab” OR “pembrolizumab” OR “atezolizumab” “avelumab” OR “durvalumab”) AND (“lactate dehydrogenase” OR “LDH”). The reference lists of original studies and reviews were also manually searched for

potential eligible publications. The need of ethical approval and patient consent is waived because of a meta-analysis of the published studies.

### 2.2. Inclusion and exclusion criteria

Studies were included if they fulfilled the following inclusion criteria:

- (1) patients were diagnosed as melanoma by histology;
- (2) patients were treated with anti-PD-1/PD-L1 antibodies as a single agent;
- (3) the associations of pretreatment LDH in blood with prognosis (including OS and PFS) were reported; and
- (4) the data of HRs and 95% CIs could be directly extracted or indirectly estimated from Kaplan–Meier curves.

The studies were excluded if they:

- (1) belonged to duplicated articles from different databases;
- (2) were case reports, reviews, cell or animal studies;
- (3) did not provide sufficient data to estimate HRs and 95% CIs;
- (4) were unrelated to the topic of interest;
- (5) had the patients who received combined treatment with other ICIs or chemotherapy simultaneously or after anti-PD-1/PD-L1 cycle; and
- (6) were unpublished or published in non-English language.

### 2.3. Data extraction

Two researchers independently extracted the relevant data from all eligible studies, and disagreements regarding the definition on the cut-off of LDH were resolved by careful reading the articles and discussion to reach consensus. The extracted information included the name of the first author, publication year, country, median age of patients, case number, study design, follow-up, type of PD-1/PD-L1 inhibitors, cut-off value of LDH, HRs with 95% CIs for OS/PFS and the method for HR collection. HRs and 95% CIs were extracted preferentially from the multivariable analysis where available. If HRs and 95% CIs were not reported directly, they could be estimated from Kaplan-Meier curves using a digitizing software-Engauge Digitizer (version 4.1; <http://digitizer.sourceforge.net/>).

### 2.4. Quality assessment

Two reviewers independently assessed the methodological quality of all eligible studies according to Newcastle-Ottawa Scale (NOS).<sup>[29]</sup> Studies with a NOS score  $\geq 7$  stars were defined as having a high quality.<sup>[30]</sup>

### 2.5. Statistical analysis

The meta-analysis was performed using the STATA 13.0 software (STATA Corporation, College Station, TX). The pooled HRs and 95% CIs were used to assess the effects of elevated LDH levels on the prognosis in melanoma patients treated with PD-1/PD-L1 inhibitors. A pooled HR of  $> 1$  indicated a poorer OS and PFS in patients with a higher pretreatment LDH level. The association between the level of LDH and the prognosis was thought to be statistically significant if the 95% CI did not overlap 1 and  $P$ -value determined by  $Z$ -test  $< 0.05$ . The statistical heterogeneity was evaluated by Cochrane  $Q$  test and  $I^2$  statistic.

A random-effects model was used for pooled estimates if a significant heterogeneity was identified ( $P < .10$  and  $I^2 > 50\%$ ); if not, a fixed-effects model was applied. To explore the source of heterogeneity, a subgroup analysis was also conducted according to the sample size, country, study design, cut-off of LDH, type of PD-1/PD-L1 inhibitors, statistics for HR and HR source. Publication bias was examined by Egger’s linear regression test.<sup>[31]</sup> If publication bias was present ( $P < .05$ ), the “trim and fill” algorithm was employed for adjustment.<sup>[32]</sup> Sensitivity analysis was performed to further evaluate the influence of each study on pooled HR via removing 1 study in turn.

### 3. Results

#### 3.1. Literature search

Figure 1 illustrates the process of literature selection. A total of 2116 records were initially retrieved by searching the online databases with keywords; 618 of them were excluded due to duplicate reports. After reading titles and abstracts, 1471 articles were eliminated because they were either review (n = 15), case reports (n = 19), cell studies (n = 330), animal studies (n = 507), studies without prognostic outcomes (n = 168), unrelated to the current topics (n = 420) or with patients undergoing anti-PD-1/PD-L1 + other ICIs combined treatments (n = 12). The remaining 27 articles were screened by full-text reviewing. As a result, 5 of them were discarded for the following reasons: patients in 3 studies received adjuvant chemotherapy or other ICIs treatment after the use of anti-PD-1/PD-L1; two failed to provide the data to estimate HRs and 95% CIs. Eventually, 22

eligible studies involving 2745 patients were enrolled in our meta-analysis.<sup>[19–28,33–44]</sup>

#### 3.2. Study characteristics

The characteristics of 22 included studies are shown in Table 1. These included studies were conducted in 11 countries [including Australia (n = 1), Belgium (n = 1), Canada (n = 1), France (n = 3), Germany (n = 2), Italy (n = 3), Japan (n = 3), Spain (n = 1), Sweden (n = 1), UK (n = 2), USA (n = 4)] and published from 2016 to 2020. The ICI agent for the treatment of these patients with advanced or metastatic melanoma was nivolumab in 7 studies; pembrolizumab in 8 studies; pembrolizumab or nivolumab in 7 studies. The data of most patients were retrospectively (19/22) collected from a single medical center (14/22). The study of Wagner et al<sup>[33]</sup> used 2 multivariate models to analyze the associations of LDH in blood samples with OS; thus, 19 studies with 20 results were used for OS meta-analysis. Thirteen studies reported the impact of LDH in blood samples on PFS. The cut-off of LDH was upper limit of normal (ULN) (although the value may also be different) in most studies; while some used the 1.5 ULN, 2 ULN or 2.5ULN as the threshold. HRs and 95% CIs were directly obtained from 17 studies (although some only used the univariate analysis), while indirectly estimated from the Kaplan-Meier curve in 5 studies. All studies had the NOS score  $\geq 7$ , suggesting they were of high quality (Table 1).

#### 3.3. Correlation between pretreatment LDH level in blood samples and OS

The heterogeneity existed among the 19 studies with 20 results ( $I^2 = 71.3\%$ ,  $P < .001$ ), so a random-effect model was used to calculate pooled HRs. As shown in Figure 2, the pooled analysis suggested that an elevated pretreatment LDH level was significantly associated with a worse OS in patients treated with PD-1/PD-L1 inhibitors (HR = 2.44; 95% CI: 1.95–3.04,  $P < .001$ ).

Subgroup analyses were then performed to explore the potential source of the heterogeneity. From the results in Table 2, we could see that melanoma patients with a higher LDH level had a poorer prognosis regardless of different sample sizes, countries, study designs, cut-offs of LDH, types of PD-1/PD-L1 inhibitors, statistical methods for HR and HR sourced, all with HRs  $> 1$  and  $P < .05$ . But compared with overall estimates, the absence of a significant heterogeneity was seen in the analysis of studies with sample size  $> 100$ , non-European population, prospective-multi-center design, cut-off  $> ULN$ , pembrolizumab/mixed treatment and multivariate results ( $I^2 < 50\%$ ,  $P > .1$ ) which meant the influence of heterogeneity had been partially excluded.

#### 3.4. Correlation between pretreatment LDH level in blood samples and PFS

There was also evidence of a significant heterogeneity among the 13 studies ( $I^2 = 57.3\%$ ,  $P = .005$ ) assessing the relationship between the LDH level and PFS, so a random-effect model was utilized to estimate the pooled effect size. Similar to the results of OS, our meta-analysis revealed that a higher pretreatment LDH level of patients treated with PD-1/PD-L1 inhibitors predicted a significantly shorter PFS (HR, 1.61; 95% CI, 1.34–1.92;  $P < .001$ ) (Fig. 3).

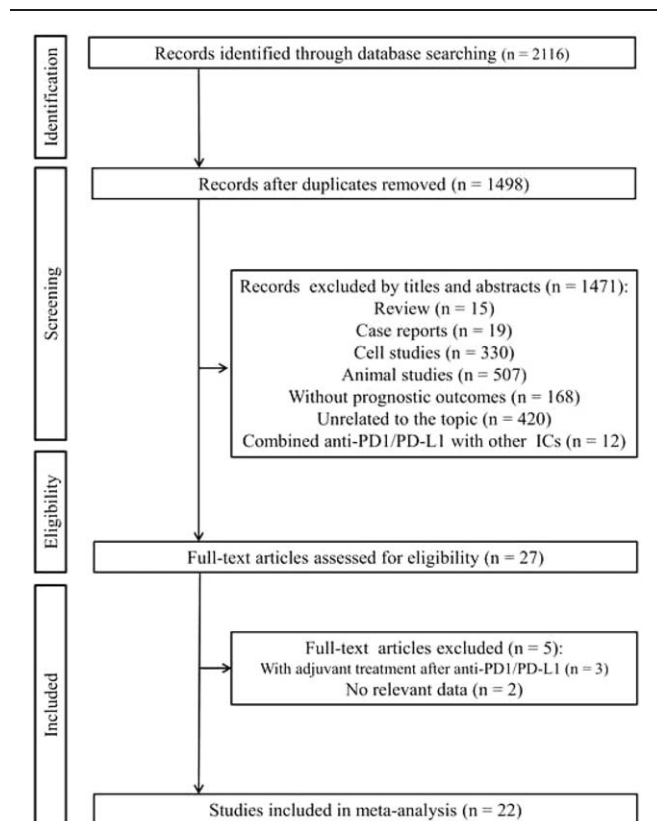


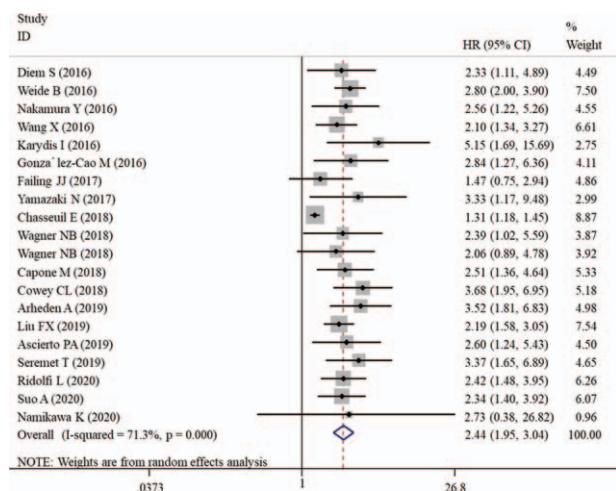
Figure 1. Flowchart of the study selection.

**Table 1**

**Characteristics of included studies.**

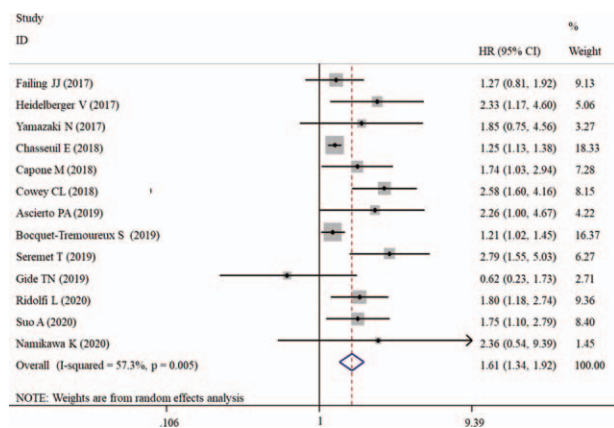
Study	Year	Country	Case No.	Median age (range)	Disease status	Study design	Median follow-up	Type of Anti-PD-1/PD-L1	Cut-off of LDH	Survival endpoint	Statistical method for HR	HR source	NOS
Failing JJ <sup>[26]</sup>	2017	USA	133	61 (18–90)	Metastatic	Single-center, retrospective	12 mo	Pembrolizumab	ULN	PFS, OS (both non-significant)	PFS (UV), OS (MV)	Reported	8
Chasseuil E <sup>[19]</sup>	2018	France	87	71 (27–92)	Advanced	Single-center, retrospective	227 d	Nivolumab	ULN	PFS, OS (both significant)	UV	Reported	9
Wagner NB <sup>[33]</sup>	2018	Germany	152	–	Advanced	Single-center, retrospective	9.9 mo	Pembrolizumab	1.5ULN	OS (two MV models, one non-significant, one non-significant)	MV	Reported	8
Diem S <sup>[34]</sup>	2016	UK	66	56 (49–68)	Metastatic	Single-center, retrospective	9 mo	Pembrolizumab or nivolumab	ULN	OS (significant)	UV	Estimated from K-M	9
Heidelberger V <sup>[35]</sup>	2017	France	63	65 (22–90)	Metastatic	Single-center, retrospective	7 mo	Pembrolizumab or nivolumab	ULN	PFS (significant)	MV	Reported	8
Arheden A <sup>[36]</sup>	2019	Sweden	116	66 (27–98)	Metastatic	Single-center, retrospective	17 mo	Pembrolizumab or nivolumab	ULN	OS (significant)	UV	Reported	8
Capone M <sup>[20]</sup>	2018	Italy	97	61 (21–85)	Advanced	Single-center, retrospective	–	Nivolumab	ULN	OS, PFS (both significant)	MV	Reported	7
Ridolfi L <sup>[21]</sup>	2020	Italy	174	79 (75–93)	Metastatic	Multi-center, retrospective	8.97 mo	Pembrolizumab or nivolumab	ULN	OS, PFS (both significant)	UV	Reported	8
Liu FX <sup>[37]</sup>	2019	USA	359	–	Advanced	Multi-center, retrospective	–	Pembrolizumab	ULN	OS (significant)	UV	Estimated from K-M	7
Ascierto PA <sup>[22]</sup>	2019	Italy	71	61 (28–86)	Metastatic	Single-center, retrospective	–	Pembrolizumab or nivolumab	2ULN	OS, PFS (both significant)	MV	Reported	7
Weide B <sup>[38]</sup>	2016	Germany	512	–	Advanced	Multi-center, retrospective	–	Pembrolizumab	2.5ULN	OS (significant)	MV	Reported	7
Suo A <sup>[23]</sup>	2020	Canada	143	–	Advanced	Multi-center, retrospective	24 mo	Pembrolizumab or nivolumab	ULN	OS, PFS (both significant)	MV	Reported	8
Cowey CL <sup>[24]</sup>	2018	USA	168	66 (26–90)	Advanced	Multi-center, retrospective	10.5 mo	Pembrolizumab	ULN	OS, PFS (both significant)	MV	Reported	8
Bocquet-Tremoureaux S <sup>[39]</sup>	2019	France	87	–	Metastatic	Single-center, retrospective	31	Nivolumab	ULN	PFS	MV	Reported	8
Namikawa K <sup>[27]</sup>	2020	Japan	14	60 (42–74)	Metastatic	Single-center, retrospective	15 mo	Nivolumab	2ULN	OS, PFS (both non-significant)	UV	Estimated from K-M	8
Nakamura Y <sup>[40]</sup>	2016	Japan	93	67 (17–93)	Advanced	Multi-center, retrospective	–	Nivolumab	ULN	OS (significant)	MV	Reported	7
Gide TN <sup>[28]</sup>	2019	Australia	27	67	Metastatic	Single-center, retrospective	–	Pembrolizumab or nivolumab	ULN	PFS (non-significant)	UV	Reported	7
Seremet T <sup>[25]</sup>	2019	Belgium	85	57 (27–82)	Metastatic	Single-center, prospective	84 wk	Pembrolizumab	ULN	OS, PFS (both significant)	UV	Reported	8
Wang X <sup>[41]</sup>	2016	USA	221	59.2	Advanced	Single-center, prospective	–	Nivolumab	ULN	OS (significant)	MV	Reported	7
Yamazaki N <sup>[42]</sup>	2017	Japan	23	–	Advanced	Multi-center, prospective	–	Nivolumab	ULN	OS, PFS (both non-significant)	UV	Estimated from K-M	8
Karydis I <sup>[43]</sup>	2016	UK	25	58 (32–83)	Metastatic	Single-center, retrospective	225 d	Pembrolizumab	ULN	OS (significant)	UV	Estimated from K-M	7
Gonzalez-Cao M <sup>[44]</sup>	2016	Spain	29	–	Advanced	Multi-center, retrospective	–	Pembrolizumab	ULN	OS (significant)	MV	Reported	7

HR = hazard ratio, K-M = Kaplan-Meier curve, LDH = lactate dehydrogenase, MV = multivariate analysis, NOS = Newcastle-Ottawa Scale, OS = overall survival, PD-1 = programmed death receptor-1, PD-L1 = programmed death ligand 1, PFS = progression-free survival, ULN = upper limit of normal, UV = univariate analysis, w = week.



**Figure 2.** Forest plot of HR for the association between pretreatment lactate dehydrogenase and overall survival in melanoma patients receiving PD-1/PD-L1 inhibitors. CIs = confidence intervals, HR = hazard ratio, PD-1 = programmed death receptor-1, PD-L1 = programmed death ligand 1.

Then, stratified analyses were conducted. The results also demonstrated that this significant prognostic potential of pretreatment LDH for PFS was not changed after subgroup analyses according to sample size, country, study design, cut-off of LDH, type of PD-1/PD-L1 inhibitors and statistics for HR (Table 3). However, no significant association was



**Figure 3.** Forest plot of HR for the association between pretreatment lactate dehydrogenase and progression-free survival in melanoma patients receiving PD-1/PD-L1 inhibitors. CIs = confidence intervals, HR = hazard ratio, PD-1 = programmed death receptor-1, PD-L1 = programmed death ligand 1.

observed any more between pretreatment LDH and PFS in studies with the HR estimated from the Kaplan-Meier curve (HR, 1.98; 95% CI, 0.93–4.25;  $P = .079$ ). The significant heterogeneity also disappeared in the subgroup analysis of studies with non-European population, prospective-multi-center design, cut-off of 2ULN and nivolumab/mixed treatment multivariate results ( $I^2 < 50%$ ,  $P > .1$ ), suggesting the results for them may be especially robust.

**Table 2**  
Subgroup analysis on the association between LDH and OS.

Comparison	Studies	HR (95%CI)	$P_A$ -value	$I^2$	$P_H$ -value	Model
Sample size						
<100	10	2.51 (1.72,3.66)	< .001	68.8	.001	R
>100	10	2.43 (2.08,2.84)	< .001	0.0	.681	F
Country						
European	13	2.46 (1.84,3.28)	< .001	76.5	<.001	R
Non-European	7	2.34 (1.88,2.92)	< .001	0.0	.623	F
Study design						
Retrospective	17	2.40 (1.88,3.06)	< .001	73.1	<.001	R
Prospective	3	2.49 (1.75,3.56)	< .001	0.0	.462	F
Single center	12	2.28 (1.69,3.07)	< .001	66.5	.001	R
Multi-center	8	2.57 (2.16,3.06)	< .001	0.0	.897	F
Cut-off of LDH						
ULN	15	2.42 (1.88,3.12)	< .001	73.7	<.001	R
1.5ULN	2	2.22 (1.22,4.03)	.009	0.0	.808	F
2ULN	2	2.61 (1.30,5.25)	.007	0.0	.966	F
2.5ULN	1	2.80 (2.01,3.91)	<.001	–	–	F
Type of PD-1/PD-L1 inhibitors						
Nivolumab	6	2.02 (1.38,2.96)	<.001	64.0	.016	R
Pembrolizumab	9	2.55 (2.13,3.07)	< .001	0.0	.499	F
Mixed	5	2.56 (1.96,3.35)	< .001	0.0	.892	F
HR source						
Reported	15	2.38 (1.84,3.07)	<.001	75.1	<.001	R
Estimated	5	2.41 (1.83,3.18)	< .001	0.0	.645	F
Statistics for HR						
Multivariate	11	2.48 (2.08,2.95)	<.001	0.0	.881	F
Univariate	9	2.48 (1.72,3.59)	<.001	77.3	< .001	R

CI = confidence interval, F = fixed-effects model, HR = hazard ratios,  $I^2$  = the degree of heterogeneity by  $I^2$  statistic, LDH = lactate dehydrogenase, OS = overall survival, PD-1 = programmed death receptor-1, PD-L1 = programmed death ligand 1,  $P_A$  =  $P$ -value for heterogeneity measured by  $Q$ -test,  $P_H$  =  $P$ -value for association determined by  $Z$ -test, R = random-effects model, ULN = upper limit of normal.

**Table 3**  
Subgroup analysis on the association between LDH and PFS.

Comparison	Studies	HR (95%CI)	$P_Z$ -value	$I^2$	$P_H$ -value	Model
Sample size						
<100	11	1.55 (1.29,1.86)	< .001	51.7	.023	R
>100	2	1.80 (0.90,3.60)	.098	78.5	.031	R
Country						
European	7	1.56 (1.27,1.92)	<.001	62.3	.014	R
Non-European	6	1.64 (1.15,2.33)	.006	42.9	.119	F
Study design						
Retrospective	11	1.52 (1.28,1.81)	< .001	53.6	.018	R
Prospective	2	2.47 (1.51,4.04)	< .001	0.0	.455	F
Single center	9	1.44 (1.20,1.74)	< .001	51.1	.038	R
Multi-center	4	1.98 (1.54,2.54)	< .001	0.0	.644	F
Cut-off of LDH						
ULN	11	1.57 (1.31,1.89)	< .001	61.1	.004	R
2ULN	2	2.28 (1.16,4.50)	.007	0.0	.958	F
Type of PD-1/PD-L1 inhibitors						
Nivolumab	5	1.26 (1.16,1.37)	< .001	0.0	.538	F
Pembrolizumab	3	2.04 (1.22,3.43)	.007	69.4	.038	R
Mixed	5	1.76 (1.29,2.39)	<.001	22.6	.271	F
HR source						
Reported	11	1.60 (1.32,1.93)	<.001	63.0	.003	R
Estimated	2	1.98 (0.93,4.25)	.079	0.0	.778	F
Statistics for HR						
Multivariate	6	1.80 (1.32,2.47)	<.001	63.9	.016	R
Univariate	7	1.51 (1.14,1.98)	.004	52.7	.048	R

CI = confidence interval, F = fixed-effects model, HR = hazard ratios,  $I^2$  = the degree of heterogeneity by  $I^2$  statistic, LDH = lactate dehydrogenase, PD-1 = programmed death receptor-1, PD-L1 = programmed death ligand 1, PFS = progression-free survival,  $P_H$  =  $P$ -value for heterogeneity measured by  $Q$ -test,  $P_Z$  =  $P$ -value for association determined by  $Z$ -test, R = random-effects model, ULN = upper limit of normal.

### 3.5. Sensitivity analysis and publication bias

Although Egger’s linear regression test showed there was potential publication bias in the analysis of OS ( $p < 0.001$ ) and PFS ( $p = 0.014$ ), the adjusted results by the trim and fill method (Fig. 4) showed that the significant associations between an elevated LDH level and unfavorable OS (HR = 1.69; 95% CI: 1.37 – 2.08,  $P < .001$ ) and PFS (HR = 1.38; 95% CI: 1.14 – 1.67,  $P < .001$ ) were still present. Thus, the impact of publication bias on the pooled results may be weak.

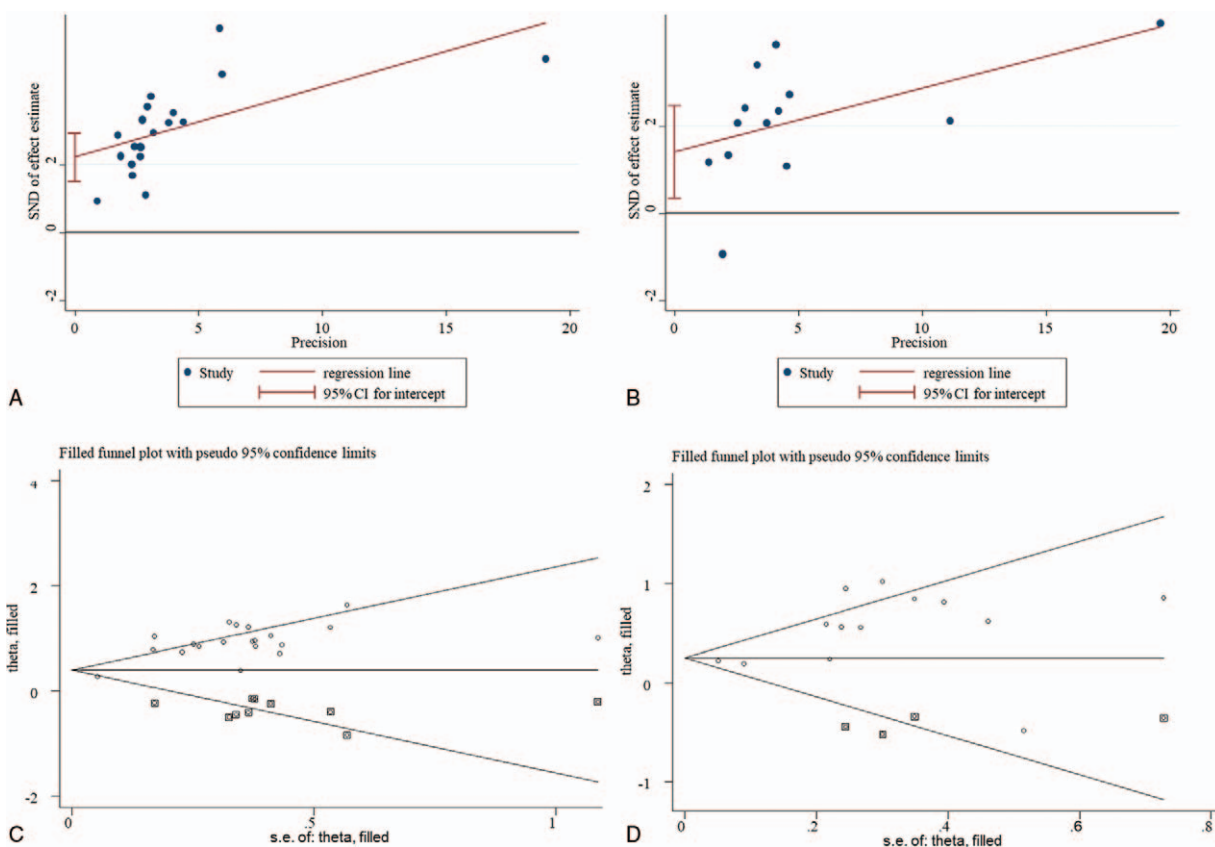
Sensitivity analysis was performed to further assess the robustness of the pooled HR assessing the association between LDH and OS/PFS by omitting single study in turn. The results showed that no single study significantly influenced the summary HRs (Fig. 5), indicating the consequence of this meta-analysis was stable and reliable.

## 4. Discussion

Although there were several meta-analyses to investigate the prognostic values of pretreatment LDH level for cancer patients,<sup>[45–48]</sup> only 2 focused on the patients treated with ICIs: one was for non-small-cell lung cancer<sup>[18]</sup> and the other was for melanoma.<sup>[49]</sup> Also, in the study of Petrelli et al,<sup>[49]</sup> the literatures involving all ICIs (including anti-PD-1/PD-L1 monotherapy, anti-CTLA4 monotherapy and combined therapy) were integrated together for meta-analyses. In the present study, we, for the first time, attempted to confirm the prognostic significance of pretreatment LDH for melanoma patients undergoing anti-PD-1/PD-L1 monotherapy. Compared with the study of Petrelli et al<sup>[49]</sup> which searched the articles until 28 January 2018, our study newly enrolled some papers published in 2019 and 2020 to

further increase the statistical power; thus, our conclusion may be more credible. This hypothesis has been confirmed in our analysis: overall estimate analysis using 19 and 13 publications showed that an elevated pretreatment LDH level was significantly associated with a poor OS (HR = 2.44) and PFS (HR = 1.61) in melanoma patients treated with anti-PD-1/PD-L1 single agents. The similar conclusions were also achieved in the subgroup analyses based on sample size, country, study design, cut-off of LDH, type of PD-1/PD-L1 inhibitors and statistics for HR. Sensitivity analysis and publication bias analyses also demonstrated the combined HR was stable. Accordingly, we got the conclusion that pretreatment LDH may serve as a potential prognostic biomarker for anti-PD-1/PD-L1 in patients with melanoma.

The potential mechanism to explain the inferior survival in the presence of elevated LDH levels is the activation of the Warburg effect (increased aerobic glycolysis) in advanced or metastatic melanoma. LDH is a key glycolytic enzyme responsible for pyruvate-to-lactate conversion, accompanied by the reproduction of oxidized nicotinamide adenine dinucleotide from reduced NADH for continued glycolysis. It had been widely observed that melanoma cells with suppressed proliferation, invasion and metastasis ability usually exhibited the characteristics of a decreased glucose uptake, lactate production, ATP generation, extracellular acidification rate, and an increased oxygen consumption rate.<sup>[50,51]</sup> The expression of genes encode for LDH was also increased in malignant melanoma compared with controls.<sup>[52–55]</sup> Knockout of LDH genes strongly reduced the LDH activity and lactate secretion as well as proliferation rates of melanoma *in vitro* and *in vivo* compared with their counterparts.<sup>[56]</sup> High serum LDH was found to be associated with a significant increase in LDH isoenzymes.<sup>[55]</sup> Hereby, a high



**Figure 4.** Funnel plot for the assessment of publication bias. A, Egger’s funnel plot for overall survival; B, Egger’s funnel plot for progression-free survival; C, trim and fill-adjusted funnel plot for overall survival; D, trim and fill-adjusted funnel plot for progression-free survival. CI = confidence intervals, SND = standard normal deviation, SE = standard error.

concentration of LDH in blood may indirectly reflect the content and metabolism of LDH in the melanoma cells and predict the tumor progression and patient’s prognosis.

In addition, the prognostic potential of LDH for patients receiving PD-1/PD-L1 inhibitors may be attributed to the correlation between LDH/lactate and PD-1/PD-L1-mediated immune response. PD-1 is a surface receptor expressed on various activated immune cells, such as T cells, macrophages and dendritic cells. It could interact with its ligand PD-L1 and then reduce the survival of CD8+ T cells and macrophages (M1 type) and their cytotoxicity on tumor cells, thus evading the immune surveillance and promoting the progression of cancers.<sup>[17,57,58]</sup> PD-1 expression on dendritic cells supported tumor growth by suppressing CD8 + T cell function.<sup>[59]</sup> Lactate was demonstrated to upregulate vascular endothelial growth factor and arginase 1 via the transcription factor hypoxia-inducible factor 1a and then induce macrophages skewed to M2-polarized macrophages which represented a tumor-promoting state.<sup>[60]</sup> LDH-associated lactate accumulation in melanomas also inhibited tumor surveillance by diminishing the production of interferon- $\gamma$  in T and natural killer cells.<sup>[15]</sup> Blood dendritic cells were dramatically depleted in melanomas, particularly in patients with a high LDH level. Exposure of lactic acidosis to dendritic cells impaired both the viability and functions of dendritic cells.<sup>[61]</sup> Based on these findings, we speculate LDH may exert similar functions to the activation of PD-1/PD-L1 pathway and therefore, the presence of a high LDH level in melanomas may antagonize

the therapeutic effects of PD-1/PD-L1 inhibitors and lead to a poor prognosis.

The present study had some limitations. First, considerable heterogeneity was identified among studies. However, the similar results were obtained in the subgroup and sensitivity analysis, suggesting our results are stable and credible. Without doubt, whether there were other potential factors (i.e. gender) that influence the heterogeneity may be still uncertain due to limited information in the articles. Second, most of included articles were retrospective cohort studies which may introduce some unavoidable bias (such as selection bias). Third, although the results were significant using all the cut-off value of LDH, which is the optimal, remains uncertain because the number of studies with cut-off of LDH > 1.5, 2 and 2.5 ULN was relatively small. Fourth, the HRs extracted from the survival curve may introduce potential errors, which may be a potential reason to explain the non-significant association between LDH and PFS in the estimated HR subgroup. Fifth, the associations between LDH and some therapeutic outcomes (such as the response rate and adverse effect events) were not investigated due to lack of sufficient data and controversial conclusions. Sixth, all the included studies explored the effects for anti-PD-1 antibodies and no studies of anti-PD-L1 antibodies were enrolled. Seventh, the relationship between the mRNA expression status of LDH gene and the prognosis of melanoma patients was not explored like other genes.<sup>[62–66]</sup> Therefore, the significance of LDH for predicting the therapeutic effects in melanoma patients treated

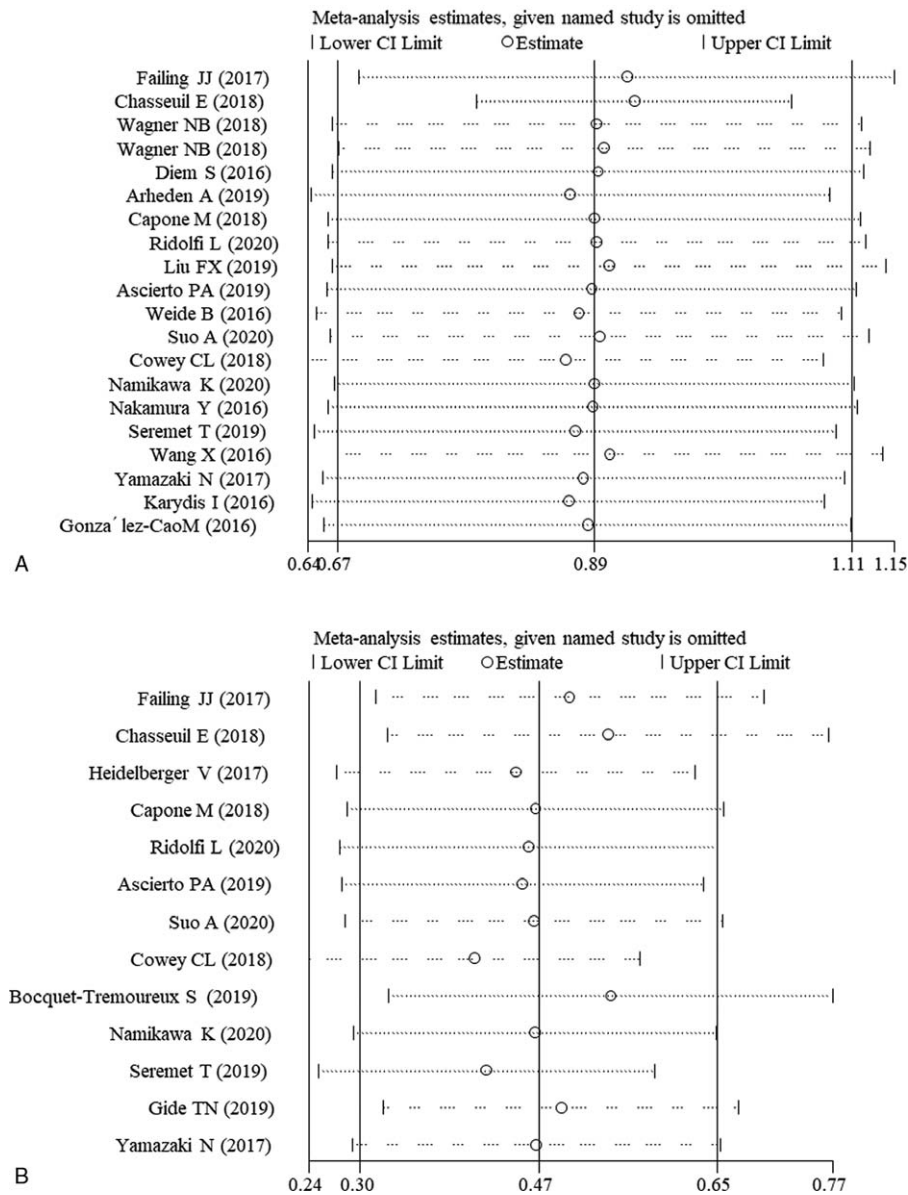


Figure 5. Sensitivity analysis. A, overall survival; B, progression-free survival. CI = confidence interval.

with anti-PD-1/PD-L1 needs to be validated and updated in the future.

**5. Conclusion**

Our meta-analysis shows that a high pretreatment LDH level is significantly associated with poor OS and PFS of melanoma patients treated with anti-PD-1/PD-L1. LDH may serve as a potential biomarker to identify patients who can benefit from anti-PD-1/PD-L1 and then schedule treatments.

**Author contributions**

**Conceptualization:** Jun Xu, Xiaoling Zhu.

**Data curation:** Jun Xu, Jianguo Zhao.

**Formal analysis:** Jun Xu, Jianguo Zhao.

**Investigation:** Jianguo Zhao.

**Methodology:** Jianfang Wang, Caiping Sun.

**Project administration:** Caiping Sun.

**Resources:** Jianfang Wang.

**Software:** Jianfang Wang, Caiping Sun.

**Supervision:** Xiaoling Zhu.

**Writing – original draft:** Jun Xu.

**Writing – review & editing:** Xiaoling Zhu.

**References**

[1] Oh CM, Cho H, Won YJ, et al. Nationwide trends in the incidence of melanoma and non-melanoma skin cancers from 1999 to 2014 in South Korea. *Cancer Res Treat* 2018;50:729–37.

[2] Tejera-Vaquero A, Descalzo-Gallego MA, Otero-Rivas MM, et al. Skin cancer incidence and mortality in Spain: a systematic review and meta-analysis. *Actas Dermosifiliogr* 2016;107:318–28.



- [3] Garrett GL, Lowenstein SE, Singer JP, et al. Trends of skin cancer mortality after transplantation in the United States: 1987 to 2013. *J Am Acad Dermatol* 2016;75:106–12.
- [4] Yun S, Vincelette ND, Green MR, et al. Targeting immune checkpoints in unresectable metastatic cutaneous melanoma: a systematic review and meta-analysis of anti-CTLA-4 and anti-PD-1 agents trials. *Cancer Med* 2016;5:1481–91.
- [5] Pyo JS, Kang G. Immunotherapy in advanced melanoma: a network meta-analysis. *Immunotherapy* 2017;9:471–9.
- [6] Li J, Gu J. Efficacy and safety of PD-1 inhibitors for treating advanced melanoma: a systematic review and meta-analysis. *Immunotherapy* 2018;10:1293–302.
- [7] Sullivan RJ, Hamid O, Gonzalez R, et al. Atezolizumab plus cobimetinib and vemurafenib in BRAF-mutated melanoma patients. *Nat Med* 2019;25:929–35.
- [8] Keilholz U, Mehnert JM, Bauer S, et al. Avelumab in patients with previously treated metastatic melanoma: phase 1b results from the JAVELIN Solid Tumor trial. *J Immunother Cancer* 2019;7:12.
- [9] Pasquali S, Chiarion-Sileni V, Rossi CR, et al. Immune checkpoint inhibitors and targeted therapies for metastatic melanoma: A network meta-analysis. *Cancer Treat Rev* 2017;54:34–42.
- [10] Li J, Gu J. Efficacy and safety of ipilimumab for treating advanced melanoma: a systematic review and meta-analysis. *J Clin Pharm Ther* 2019;44:420–9.
- [11] Almutairi AR, McBride A, Slack M, et al. Potential immune-related adverse events associated with monotherapy and combination therapy of ipilimumab, nivolumab, and pembrolizumab for advanced melanoma: a systematic review and meta-analysis. *Front Oncol* 2020;10:91.
- [12] Wang J, Chmielowski B, Pellissier J, et al. Cost-effectiveness of pembrolizumab versus ipilimumab in ipilimumab-naïve patients with advanced melanoma in the United States. *J Manag Care Spec Pharm* 2017;23:184–94.
- [13] Khunger M, Patil PD, Khunger A, et al. Post-treatment changes in hematological parameters predict response to nivolumab monotherapy in non-small cell lung cancer patients. *PLoS One* 2018;13:e0197743.
- [14] Ivashko IN, Kolesar JM. Pembrolizumab and nivolumab: PD-1 inhibitors for advanced melanoma. *Am J Health Syst Pharm* 2016;73:193–201.
- [15] Brand A, Singer K, Koehl GE, et al. LDHA-associated lactic acid production blunts tumor immunosurveillance by T and NK cells. *Cell Metab* 2016;24:657–71.
- [16] Pucino V, Bombardieri M, Pitzalis C, et al. Lactate at the crossroads of metabolism, inflammation, and autoimmunity. *Eur J Immunol* 2017;47:14–21.
- [17] Blank C, Mackensen A. Contribution of the PD-L1/PD-1 pathway to T-cell exhaustion: an update on implications for chronic infections and tumor evasion. *Cancer Immunol Immunother* 2007;56:739–45.
- [18] Zhang Z, Li Y. Pretreatment lactate dehydrogenase may predict outcome of advanced non small-cell lung cancer patients treated with immune checkpoint inhibitors: A meta-analysis. *Cancer Med* 2019;8:1467–73.
- [19] Chasseuil E, Saint-Jean M, Chasseuil H, et al. Blood predictive biomarkers for nivolumab in advanced melanoma. *Acta Derm Venereol* 2018;98:406–10.
- [20] Capone M, Giannarelli D, Mallardo D, et al. Baseline neutrophil-to-lymphocyte ratio (NLR) and derived NLR could predict overall survival in patients with advanced melanoma treated with nivolumab. *J Immunother Cancer* 2018;6:74.
- [21] Ridolfi L, De Rosa F, Petracci E, et al. Anti-PD1 antibodies in patients aged  $\geq 75$  years with metastatic melanoma: a retrospective multicentre study. *J Geriatr Oncol* 2020;11:515–22.
- [22] Ascierto PA, Capone M, Grimaldi AM, et al. Proteomic test for anti-PD-1 checkpoint blockade treatment of metastatic melanoma with and without BRAF mutations. *J Immunother Cancer* 2019;7:91.
- [23] Suo A, Chan Y, Beaulieu C, et al. Anti-PD1-induced immune-related adverse events and survival outcomes in advanced melanoma. *Oncologist* 2020;25:438–46.
- [24] Cowey CL, Liu FX, Black-Shinn J, et al. Pembrolizumab utilization and outcomes for advanced melanoma in US community oncology practices. *J Immunother* 2018;41:86–95.
- [25] Seremet T, Jansen Y, Planken S, et al. Undetectable circulating tumor DNA (ctDNA) levels correlate with favorable outcome in metastatic melanoma patients treated with anti-PD1 therapy. *J Transl Med* 2019;17:303.
- [26] Failing JJ, Yan Y, Porrata LF, et al. Lymphocyte-to-monocyte ratio is associated with survival in pembrolizumab-treated metastatic melanoma patients. *Melanoma Res* 2017;27:596–600.
- [27] Namikawa K, Takahashi A, Mori T, et al. Nivolumab for patients with metastatic uveal melanoma previously untreated with ipilimumab: a single-institution retrospective study. *Melanoma Res* 2020;30:76–84.
- [28] Gide TN, Silva IP, Quek C, et al. Close proximity of immune and tumor cells underlies response to anti-PD-1 based therapies in metastatic melanoma patients. *Oncoimmunology* 2020;9:1659093.
- [29] Andreas S. Critical evaluation of the Newcastle-Ottawa scale for the assessment of the quality of nonrandomized studies in meta-analyses. *Eur J Epidemiol* 2010;25:603–5.
- [30] Liu Z, Cai L, Liu Y, et al. Association between prenatal cadmium exposure and cognitive development of offspring: a systematic review. *Environ Pollut* 2019;254(Pt B):113081.
- [31] Egger M, Davey Smith G, Schneider M, et al. Bias in meta-analysis detected by a simple, graphical test. *BMJ* 1997;315:629–34.
- [32] Peters JL, Sutton AJ, Jones DR, et al. Performance of the trim and fill method in the presence of publication bias and between-study heterogeneity. *Stat Med* 2007;26:4544–62.
- [33] Wagner NB, Forschner A, Leiter U, et al. S100B and LDH as early prognostic markers for response and overall survival in melanoma patients treated with anti-PD-1 or combined anti-PD-1 plus anti-CTLA-4 antibodies. *Br J Cancer* 2018;119:339–46.
- [34] Diem S, Kasenda B, Spain L, et al. Serum lactate dehydrogenase as an early marker for outcome in patients treated with anti-PD-1 therapy in metastatic melanoma. *Br J Cancer* 2016;114:256–61.
- [35] Heideberger V, Goldwasser F, Kramkimel N, et al. Clinical parameters associated with anti-programmed death-1 (PD-1) inhibitors-induced tumor response in melanoma patients. *Invest New Drugs* 2017;35:842–7.
- [36] Arheden A, Skalenius J, Bjursten S, et al. Real-world data on PD-1 inhibitor therapy in metastatic melanoma. *Acta Oncol* 2019;58:962–6.
- [37] Liu FX, Ou W, Diede SJ, et al. Real-world experience with pembrolizumab in patients with advanced melanoma: a large retrospective observational study. *Medicine (Baltimore)* 2019;98:e16542.
- [38] Weide B, Martens A, Hassel JC, et al. Baseline biomarkers for outcome of melanoma patients treated with pembrolizumab. *Clin Cancer Res* 2016;22:5487–96.
- [39] Bocquet-Tremoureaux S, Scharbarg E, Nguyen JM, et al. Efficacy and safety of nivolumab in metastatic melanoma: real-world practice. *Eur J Dermatol* 2019;29:315–21.
- [40] Nakamura Y, Kitano S, Takahashi A, et al. Nivolumab for advanced melanoma: pretreatment prognostic factors and early outcome markers during therapy. *Oncotarget* 2016;7:77404–15.
- [41] Wang X, Feng Y, Bajaj G, et al. Quantitative characterization of the exposure-response relationship for cancer immunotherapy: a case study of nivolumab in patients with advanced melanoma. *CPT Pharmacometrics Syst Pharmacol* 2017;6:40–8.
- [42] Yamazaki N, Kiyohara Y, Uhara H, et al. Efficacy and safety of nivolumab in Japanese patients with previously untreated advanced melanoma: A phase II study. *Cancer Sci* 2017;108:1223–30.
- [43] Karydis I, Chan PY, Wheeler M, et al. Clinical activity and safety of Pembrolizumab in Ipilimumab pre-treated patients with uveal melanoma. *Oncoimmunology* 2016;5:e1143997.
- [44] González-Cao M, Arance A, Puilats JM, et al. Pembrolizumab for advanced melanoma: experience from the Spanish Expanded Access Program. *Clin Transl Oncol* 2017;19:761–8.
- [45] Kong W, Zuo X, Liang H, et al. Prognostic value of lactate dehydrogenase in patients with hepatocellular carcinoma: a meta-analysis. *Biomed Res Int* 2018;2018:1723184.
- [46] Liu D, Wang D, Wu C, et al. Prognostic significance of serum lactate dehydrogenase in patients with breast cancer: a meta-analysis. *Cancer Manag Res* 2019;11:3611–9.
- [47] Fu Y, Lan T, Cai H, et al. Meta-analysis of serum lactate dehydrogenase and prognosis for osteosarcoma. *Medicine (Baltimore)* 2018;97:e0741.
- [48] Gan J, Wang W, Yang Z, et al. Prognostic value of pretreatment serum lactate dehydrogenase level in pancreatic cancer patients: a meta-analysis of 18 observational studies. *Medicine (Baltimore)* 2018;97:e13151.
- [49] Petrelli F, Ardito R, Merelli B, et al. Prognostic and predictive role of elevated lactate dehydrogenase in patients with melanoma treated with immunotherapy and BRAF inhibitors: a systematic review and meta-analysis. *Melanoma Res* 2019;29:1–2.
- [50] Yang X, Zhao H, Yang J, et al. MiR-150-5p regulates melanoma proliferation, invasion and metastasis via SIX1-mediated Warburg Effect. *Biochem Biophys Res Commun* 2019;515:85–91.

- [51] Yang X, Zhu X, Yan Z, et al. miR-489-3p/SIX1 axis regulates melanoma proliferation and glycolytic potential. *Mol Ther Oncolytics* 2020;16:30–40.
- [52] Zhuang L, Scolyer RA, Murali R, et al. Lactate dehydrogenase 5 expression in melanoma increases with disease progression and is associated with expression of Bcl-XL and Mcl-1, but not Bcl-2 proteins. *Mod Pathol* 2010;23:45–53.
- [53] Koch A, Ebert EV, Seitz T, et al. Characterization of glycolysis-related gene expression in malignant melanoma. *Pathol Res Pract* 2020;216:152752.
- [54] Schwab M, Ahuja MR, Anders F. Elevated levels of lactate dehydrogenase in genetically controlled melanoma of xiphophorin fish. *Comp Biochem Physiol B* 1976;54:197–9.
- [55] Ho J, de Moura MB, Lin Y, et al. Importance of glycolysis and oxidative phosphorylation in advanced melanoma. *Mol Cancer* 2012;11:76.
- [56] Ždralević M, Brand A, Di Ianni L, et al. Double genetic disruption of lactate dehydrogenases A and B is required to ablate the “Warburg effect” restricting tumor growth to oxidative metabolism. *J Biol Chem* 2018;293:15947–61.
- [57] Gordon SR, Maute RL, Dulken BW, et al. PD-1 expression by tumour-associated macrophages inhibits phagocytosis and tumour immunity. *Nature* 2017;545:495–9.
- [58] Hartley GP, Chow L. Programmed cell death ligand 1 (PD-L1) signaling regulates macrophage proliferation and activation 2018;6:1260–73.
- [59] Lim TS, Chew V, Sieow JL, et al. PD-1 expression on dendritic cells suppresses CD8(+) T cell function and antitumor immunity. *Oncoimmunology* 2016;5:e1085146.
- [60] Colegio OR, Chu NQ, Szabo AL, et al. Functional polarization of tumour-associated macrophages by tumour-derived lactic acid. *Nature* 2014;513:559–63.
- [61] Monti M, Vescovi R, Consoli F. Plasmacytoid dendritic cell impairment in metastatic melanoma by lactic acidosis. *Cancers (Basel)* 2020;12:2085.
- [62] Abdel Ghafar MT, Gharib F, Abdel-Salam S, et al. Role of serum Metadherin mRNA expression in the diagnosis and prediction of survival in patients with colorectal cancer. *Mol Biol Rep* 2020;47:2509–19.
- [63] Abdel Ghafar MT, Gharib F, Al-Ashrawy GM, et al. Serum high-temperature-required protein A2: a potential biomarker for the diagnosis of breast cancer. *Gene Reports* 2020;20:100706.
- [64] Abdel Ghafar MT, Allam AA, Darwish S. Serum HOX transcript antisense RNA expression as a diagnostic marker for chronic myeloid leukemia. *Egypt J Haematol* 2019;44:91–7.
- [65] El-Guindy DM, Wasfy RE, Abdel Ghafar MT, et al. Oct4 expression in gastric carcinoma: association with tumor proliferation, angiogenesis and survival. *J Egypt Natl Canc Inst* 2019;31:3.
- [66] Habib EM, Nosiar NA, Eid MA, et al. Circulating miR-146a expression predicts early treatment response to imatinib in adult chronic myeloid leukemia. *J Investig Med* 2021;69:333–7.