

Intimate partner violence influence on deliveries assisted by skilled health personnel

SAGE Open Medicine
I: 2050312113508388
© The Author(s) 2013
Reprints and permissions:
sagepub.co.uk/journalsPermissions.nav
DOI: 10.1177/2050312113508388
smo.sagepub.com


Amany Refaat

Abstract

Objective: Millennium Development Goal 5 calls for increasing proportions of deliveries assisted by skilled health personnel to reduce maternal mortality. This study aims to identifying the implication of exposure to intimate partner violence on these proportions.

Methodology: This study used domestic violence modules data of Demographic and Health Surveys of six countries from 2005 to 2007. Proportions of assisted deliveries were examined by sociodemographic characteristics and exposure to intimate partner violence in the studied countries. Influence on the proportion was examined against exposure to intimate partner violence through odds ratio and 95% of logistic regression analysis after controlling for women age, residence (urban/rural), household wealth level, economic level of country, educational level and working status of women and their husbands/partners.

Results: Data sets of 18,507 participants over 20 years of age showed that almost three-quarters (73%) of women had deliveries assisted by skilled health personnel. One-third of the women were ever exposed to intimate partner violence (37%) and 9% of them to the severe level. Exposure to intimate partner violence statistically significantly lowered this proportion to 69% (odds ratio: 0.73; 95% confidence interval: 0.67–0.78) meanwhile severe violence lowered it to 65% (odds ratio 0.64; 95% confidence interval: 0.58–0.72). When running multiple regression analysis, exposure to intimate partner violence retained its statistically significant decreasing influence on proportions and was not biased by the other stronger socioeconomic characteristics.

Conclusion and recommendations: Intimate partner violence has an independent influence on reducing assisted deliveries by skilled health personnel. Programs working for increasing proportions of assisted deliveries by skilled health personnel are recommended to integrate protection women from violence.

Keywords

Maternal mortality, skilled birth attendants, intimate partner violence

Introduction

Intimate partner violence (IPV) against women is a worldwide problem. The reported lifetime prevalence varied from 15% to 71%.¹ Extensive research indicates that IPV poses a significant risk to the physical health of women. IPV is associated with increased mortality, injury and disability; worse general health; chronic pain; substance abuse; reproductive disorders and poorer pregnancy outcomes. IPV is also associated with an overuse of health services and unmet need for services, as well as strained relationships with providers.^{2,3} Despite wide variations in its prevalence, many risk factors were noted.⁴ In addition to being a breach of human rights, it is associated with serious public health consequences,^{5–11} and it was found to be a barrier to women access to health care specifically among vulnerable groups of women.^{12,13}

High rates of IPV and disproportionately high maternal mortality ratios in developing countries were recognized as global public health problems.¹⁴ The risk of maternal mortality is 3 times as high for abused mothers.¹⁵ It was found that women's experience of IPV may influence receipt of skilled attendance during parturition as lifetime experience of emotional violence was found to decrease the odds of skilled attendance at most recent delivery by 40%, while lifetime experience of physical violence reduced the odds by 29%.¹⁶ Women reporting IPV in the year prior to pregnancy were at

College of Health Sciences, Walden University, Minneapolis, MN, USA

Corresponding author:

Amany Refaat, P.O. Box 350, Fifth District, Cairo, 11835, Egypt.
Email: amany.refaat@waldenu.edu

increased risk of many health problems such as high blood pressure or edema, vaginal bleeding and others compared with those not reporting IPV.¹⁷ IPV is related to unwanted pregnancy and higher rates of pregnancy loss or termination, particularly miscarriage, induced abortion^{18–20} and complicated delivery.²¹ It was found that women who were victims of IPV were more likely to give birth prematurely and deliver low-birth-weight and very low-birth-weight infants.^{22–24}

Millennium Development Goal (MDG) 5²⁵ aims to improve maternal health through reducing maternal mortality by three-quarters by 2015 and achieving universal access to reproductive health services. The majority of maternal mortalities are avoidable through a range of interventions administered by a skilled health-care provider with adequate equipment and supplies. World Health Organization (WHO) defines a skilled birth attendant as

an accredited health professional—such as a midwife, doctor or nurse—who has been educated and trained to proficiency in the skills needed to manage normal (uncomplicated) pregnancies, childbirth and the immediate postnatal period, and in the identification, management and referral of complications in women and newborns.^{26–28}

Poor social and economical situation was found^{29,30} to have a detrimental impact on the use of maternal health-care services, which might be associated with poor education and low financial capacities of the women. The association between exposure to IPV and use of reproductive health-care services suggests that partner violence plays a significant role in lower utilization of reproductive health services among women.³¹

In spite of extensive study of impact of exposure to IPV on women's lives and the international efforts to reduce the maternal mortality rates through skilled birth attendants, there is a gap of literature relating the impact of IPV on utilization of assisted deliveries by skilled health personnel. This study aims to identify the influence of exposure to IPV on these proportions.

Methodology

Study design

This study used secondary data analysis of Domestic Violence Modules of Demographic and Health Surveys (DHS), which are nationally representative surveys that employ standardized questionnaires to collect extensive data from women of reproductive age (15–49 years) in developing countries. The DHS obtain information on women's sociodemographic characteristics, their reproductive behaviors, birth history and maternal health service utilization.³² Six countries were selected, each representing one of the six WHO regions that used the domestic violence module of DHS in the period 2005–2007. They were Bangladesh, 2007; Cambodia, 2005; Colombia, 2005; Egypt, 2005; Ukraine,

2007; and Zambia, 2007. Half of the studied countries (Bangladesh, Cambodia and Zambia) were among the low-income economies according to the World Bank classification³³ of having gross national income (GNI) of less than US\$995. Egypt and Ukraine were among the lower-middle-income economies (US\$996–US\$3945), while Colombia was higher from the upper-middle-income economies (US\$3946–US\$12,195).

Maternal mortality ratio from the selected countries for the same period showed the same pattern as the poorest countries (Bangladesh, Cambodia and Zambia) have higher maternal mortality rate with highest in Zambia (470/100,000). Countries with higher income had lower maternal mortality rate, specifically Ukraine that had 26 per 100,000 only, meanwhile both Egypt and Colombia had 85 and 82, respectively.³⁴

Variables

IPV was considered for the answer of yes for the DHS variable of “experienced any of less severe violence.” This variable is computed of four variables of spouse ever pushed her or threw something; slapped or twisted arm; punched with fist and ever kicked or dragged her.

Severe IPV was defined as the answer of yes to the DHS variable of “experienced any severe violence.” This variable is computed from three variables of spouse ever tried to strangle or burn; threatened with knife or weapon and ever attacked with knife or weapon.

Assisted delivery by skilled health personnel variable was computed from variables of deliveries assisted by a doctor, nurse or trained midwife.

Household wealth level was measured through the wealth index variable of the DHS that has five levels from poorest to richest level.

Economic level of the country was identified according to the World Bank classification.

Educational level was measured as defined according to MDG 2³⁵ such as completed at least primary education.

Inclusion and exclusion criteria

Since adolescence has different sets of reproductive health problems, participants aged 15–19 years were excluded from the data file. Only data for women over 20 years of age were included in the analysis.

Data analysis

Data were analyzed using SPSS version 21. Proportions of assisted deliveries by skilled health personnel were examined by different sociodemographic characteristics, exposure to both less severe and severe IPV in the studied countries using tests of significance, odds ratio (OR) and 95% confidence interval (CI). Logistic regression analysis was conducted to

Table 1. Assistance in deliveries in different countries.

Country	Doctor	Nurse/ midwife	Skilled health personnel	Traditional birth attendant	Relative/ others	No one	Total
Low income			41.4				
Bangladesh, 2007	15.5	7.0	22.6	10.4	65.4	1.5	1821
Cambodia, 2005	6.1	35.4	41.5	57.4	1.0	0.1	1266
Zambia, 2007	3.4	49.5	52.9	22.5	21.3	3.4	2977
Middle income			88.7				
Egypt, 2005	72.7	5.6	78.3	19.8	1.2	0.7	2733
Ukraine, 2007	91.7	7.9	99.6	0.0	0.2	0.2	481
Colombia, 2005	88.3	2.9	91.3	5.5	2.8	0.4	9229
Total	59.6	13.3	73.2	14.3	11.9	1.0	18507

identify the influence of exposure to IPV on the use of assisted skilled personnel in deliveries as the dependent variable with control of women age, residence (urban/rural), household wealth level, economic level of country, educational level and working status of women and their husbands/partners.

Ethical considerations

Permission to download and use the data was obtained from Measure DHS Macro, Inc. The data were previously de-identified to keep the confidentiality of the surveys participants.

Results

Data sets had 18,507 participants over 20 years of age from the six different countries. As Table 1 shows, almost three-quarters (73%) of the studied women had deliveries assisted by skilled health personnel as doctors (60%) and nurses/midwives (13%). This varied from country to other, as it was almost universal in Ukraine versus 23% only in Bangladesh. It also varied with economic level as countries with low income had statistically significant lowest proportions of 41%. Meanwhile, women living in middle-income countries had 11 times more (95% CI: 10.33–12.02) assisted deliveries. Traditional birth attendants (TBA) attended deliveries of more than half of women in Cambodia, whereas relatives attended the deliveries of most of women in Bangladesh.

One-third of the women were ever exposed to IPV (37%) and 9% only were ever exposed to severe violence (Table 2). Half (55%) of the women who were exposed to IPV were formerly married ones with highest level among divorced (63%) and they were twice the currently married ones. Younger, uneducated, poorer, living in low-income country with uneducated and not working husband were more to be exposed to IPV. Exposure to IPV was higher among women who were working as skilled manual workers (42%) and in services and sales (40%); meanwhile, those working in clerical or professional occupations were the least (26% and 19%, respectively). Bangladesh and Zambia showed the

highest prevalence (49% and 47%, respectively), while Ukraine showed the least level of IPV (9%).

Severe violence was 3 times among formerly married women as it was among 21% and more specifically among divorced (26%). It was almost twice among those married to unemployed husbands and living in low-income countries than middle-income ones. Poorer, uneducated women, married to uneducated husbands were more to be exposed to severe IPV. Women working in sales and services were more to be exposed to it (11%), whereas those working in clerical jobs and professional occupations were the least (4% and 4.5%, respectively). Bangladesh and Zambia had the highest prevalence (16% and 14%, respectively), whereas it was the least in Egypt (1.5%).

Proportions of assisted deliveries by skilled health personnel were the highest among women residing in urban areas, higher income countries and wealthier households and those who were currently married. Younger, educated women, working, married to educated and working husbands were more to have assisted delivery by health personnel. Exposure to IPV statistically significantly lowered this proportion to 69% (OR: 0.73; 95% CI: 0.67–0.78), whereas exposure to severe violence lowered the proportions to 65% (OR: 0.64; 95% CI: 0.58–0.72; Table 3).

Declining of assisted deliveries due to exposure to violence was among all countries (Figures 1 and 2) and was highest in Bangladesh as it was lowered to the half as 15% versus 30% among unexposed to IPV (OR: 0.41; 95% CI: 0.32–0.51), followed by Egypt as it was 74% versus 80% among unexposed to IPV (OR: 0.71; 95% CI: 0.58–0.86). Exposure to severe IPV lowered it in Bangladesh to 14% versus 24% of unexposed to severe IPV (OR: 0.49; 95% CI: 0.35–0.71), followed by Colombia of 88% versus 92% among unexposed (OR: 0.68; 95% CI: 0.55–0.85).

When running multiple regression analysis (Table 4), exposure to IPV retained its statistically significant decreasing influence on deliveries assisted by skilled health workers and was not biased by the other stronger socioeconomic characteristics. The strongest determinants of having assisted deliveries were living in middle-income country (8 times the

Table 2. Sociodemographic characteristics of women exposed to IPV.

	IPV		Severe IPV		Total
	%	OR; 95% CI	%	OR; 95% CI	
Age (years)					
20–34	36.8*	1.11; 1.03–1.19	8.9	NA	78.9
35+	34.5		9.3		21.1
Marital status					
Currently married/in union	34.0	2.33; 2.12–2.56	7.4	3.32; 2.93–3.75	88.8
Formerly/never married	54.6*		21.0*		11.2
Partner age (years)					
20–34	34.1	NA	7.2	NA	53.3
35+	34.0		7.8		46.7
Residence					
Rural	35.0	1.11; 1.04–1.18	8.8	NA	46.5
Urban	37.4*		9.1		53.5
Household wealth level					
Poorest/poor	38.3*	1.18; 1.11–1.26	10.1*	1.30; 1.17–1.44	48.6
Middle/richer/richest	34.4		7.9		51.4
Economic level of country					
Low income	40.4*	1.30; 1.22–1.38	12.6*	1.90; 1.71–2.10	32.8
Low/upper middle income	34.3		7.2		67.2
Educational level					
Uneducated	38.6*	1.12; 1.03–1.23	10.7*	1.26; 1.10–1.45	13.5
Educated	35.9		8.7		86.5
Partner educational level					
Uneducated	42.1*	1.32; 1.20–1.45	11.9*	1.43; 1.24–1.66	11.1
Educated	35.6		8.6		88.9
Working status					
Not working	35.4	1.09; 1.03–1.12	7.7	1.43; 1.29–1.59	57.4
Working	37.5*		10.7*		42.6
Partner working status					
Not working	48.2*	1.74; 1.58–1.91	15.2*	1.99; 1.73–2.29	10.3
Working	34.9		8.2		89.7
Total	36.6		9.0		18,507

IPV: intimate partner violence; OR: odds ratio; CI: confidence interval.

* $p < 0.0001$; number of partners = 16,487.

lower income ones); followed by urban residence and working husband/partner (4 times each) then being an educated woman (3 times).

Discussion

Maternal mortality is still unacceptably high. The high number of maternal deaths in some areas of the world reflects inequities in access to health services and highlights the gap between rich and poor. There are also large disparities within countries, between people with high and low income and between people living in rural and urban areas.³⁶ The results of this study confirmed these inequalities of access to assisted deliveries by skilled birth attendants, with exception of Ukraine that showed universal access despite that it was not the highest in income; however, the highest in educational level. Low-income countries showed the highest levels of

exposure to domestic violence and suffered the highest burden of it on the proportions of assisted deliveries. The highest impact of IPV on lowering proportion of assisted deliveries confirmed previous study results of the impact of IPV on lower utilization of reproductive health in Bangladesh.³⁷ Results confirmed the impact of income and education on assisted deliveries by skilled birth attendants in developing countries too.^{38,39} In spite of the limitation of using the cross-sectional design of DHS data collection, the results of this study showed that the burden of exposure to IPV was not biased by the stronger influence of socioeconomic factors.

United Nations led international efforts in the form of MDG 5 in decreasing maternal mortality through strengthening training of skilled birth attendants and upgrading infrastructures. Meanwhile, MDG 3 is aiming to promoting gender equality through women empowerment. However, violence

Table 3. Influence of sociodemographic characteristics and IPV on proportion of assisted deliveries.

	Proportion	OR (95% CI)	Total
Age (years)			
<34	73.8*	1.16 (1.07–1.25)	78.9
35+	70.9		21.1
Marital status			
Currently married/in union	83.5*	1.98 (1.75–2.23)	88.8
Formerly/never married	71.9		11.2
Partner age (years)			
20–34	75.3*	1.43 (1.33–1.53)	53.3
35+	68.1		46.7
Residence			
Rural	53.9	7.57 (7.17–8.38)	46.5
Urban	90.0*		53.5
Household wealth level			
Poorest/poor	63.8	2.59 (2.42–2.78)	48.6
Middle/richer/richest	82.1*		51.4
Economic level of country			
Low income	41.4	11.14 (10.33–12.02)	32.8
Low and upper middle income	88.7*		67.2
Educational level			
Uneducated	36.1	6.65 (6.07–7.29)	13.5
Educated	79.0*		86.5
Partner educational level			
Uneducated	36.9	5.97 (5.42–6.58)	11.1
Educated	77.7*		88.9
Working status			
Not working	72.3	1.12 (1.05–1.20)	57.4
Working	74.5*		42.6
Partner working status			
Not working	24.7	11.30 (10.10–12.64)	10.3
Working	78.8*		89.7
IPV			
No	75.5	0.73 (0.67–0.78)	63.7
Yes	69.3*		36.3
Severe IPV			
No	74.1	0.64 (0.58–0.72)	91.0
Yes	64.8*		9.0
Total	73.2%		18,507

IPV: intimate partner violence; OR: odds ratio; CI: confidence interval.

*p < 0.0001; number of partners = 16,487.

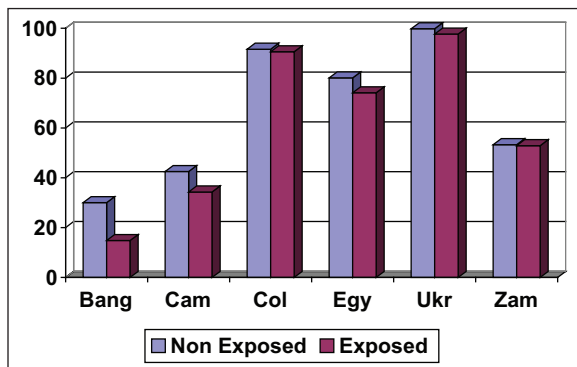


Figure 1. Influence of exposure to IPV on proportion of assisted deliveries among the six different countries.

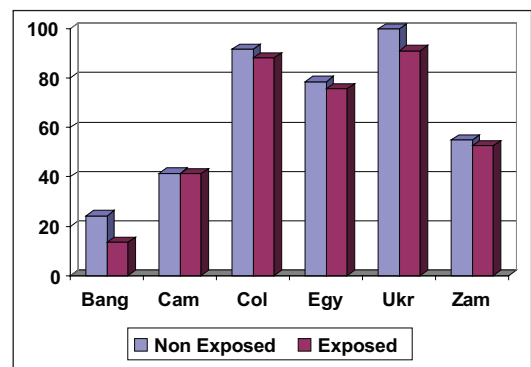


Figure 2. Influence of exposure severe IPV on proportion of assisted deliveries among the six different countries.

Table 4. Influence of IPV and socioeconomic factors on proportion of deliveries assisted by skilled health personnel (multiple logistic regression analysis).

	B	Significance	Exp (B)	95% CI
IPV	-0.276	0.000	0.759	0.691–0.834
Younger age	0.136	0.031	1.145	1.013–1.296
Marital status	0.189	0.606	1.208	0.589–2.478
Younger age of partner	0.088	0.090	1.092	0.986–1.209
Urban residence	1.301	0.000	3.673	3.298–4.091
Richer household level	0.903	0.000	2.466	2.216–2.745
Higher income country	2.089	0.000	8.074	7.268–8.969
Educated	1.125	0.000	3.081	2.722–3.488
Educated partner	0.687	0.000	1.988	1.730–2.284
Working	0.029	0.544	1.030	0.937–1.132
Working partner	1.3324	0.000	3.759	3.250–4.347
Constant	-6.342	0.000		

IPV: intimate partner violence; CI: confidence interval.

against women continues to undermine efforts to reach all goals.⁴⁰ Integration of prevention and protection of women from IPV in health professional educational programs is required to help health personnel to identify IPV and screen for its manifestation;⁴¹ however, health professional curricula still need comprehensive approaches to teaching IPV.^{42–44}

Some governments and professional organizations recommend screening all women for IPV rather than asking only women with symptoms. Studies comparing screening versus case finding (with or without advocacy or therapeutic interventions) for women's long-term well-being would better inform future policies in health-care settings.^{45–47}

This study calls for integrating protection of women against exposure to domestic violence in programs working on reducing maternal mortality, especially for women living in developing countries. Integration into health professional educational curricula and regular screening of IPV would have a positive social change on the proportions of use of skilled health personnel in deliveries.

Declaration of conflicting interests

The author declares that there is no conflict of interest.

Funding

This research received no specific grant from any funding agency in the public, commercial or not-for-profit sectors.

References

- Garcia-Moreno C, Jansen HAFM, Ellsberg M, et al. Prevalence of intimate partner violence: findings from the WHO multi-country study on women's health and domestic violence. *Lancet* 2006; 368(9543): 1260–1269.
- Sarkar NN. The impact of intimate partner violence on women's reproductive health and pregnancy outcome. *J Obstet Gynaecol* 2008; 28(3): 266–271.
- Plichta SB. Intimate partner violence and physical health consequences: policy and practice implications. *J Interpers Violence* 2004; 19(11): 1296–1323.
- Abramsky T, Watts CH, Garcia-Moreno C, et al. What factors are associated with recent intimate partner violence? Findings from the WHO multi-country study on women's health and domestic violence. *BMC Public Health* 2011; 11: 109.
- Ellsberg M, Jansen HAFM, Heise L, et al. Intimate partner violence and women's physical and mental health in the WHO multi-country study on women's health and domestic violence: an observational study. *Lancet* 2008; 371(9619): 1165–1172.
- Chen P-H, Rovi S, Vega M, et al. Relation of domestic violence to health status among Hispanic women. *J Health Care Poor Underserved* 2009; 20(2): 569–582.
- McCaw B, Golding JM, Farley M, et al. Domestic violence and abuse, health status, and social functioning. *Women's Health* 2007; 45(2): 1–23.
- Kramer A, Lorenzon D and Mueller G. Prevalence of intimate partner violence and health implications for women using emergency departments and primary care clinics. *Women's Health Issues* 2004; 14(1): 19–29.
- Ruiz-Pérez I, Plazaola-Castaño J and Del Río-Lozano M. Physical health consequences of intimate partner violence in Spanish women. *Eur J Public Health* 2007; 17(5): 437–443.
- Vachher AS and Sharma A. Domestic violence against women and their mental health status in a colony in Delhi. *Indian J Community Med* 2010; 35(3): 403–405.
- Fahmy HH and Abd El-Rahman SI. Determinants and health consequences of domestic violence among women in reproductive age at Zagazig district, Egypt. *J Egypt Public Health Assoc* 2008; 83(1–2): 87–106.
- Lichtenstein B. Domestic violence in barriers to health care for HIV-positive women. *AIDS Patient Care STDS* 2006; 20(2): 122–132.
- Barrett KA, O'Day B, Roche A, et al. Intimate partner violence, health status, and health care access among women with disabilities. *Women's Health Issues* 2009; 19(2): 94–100.
- Espinoza H and Camacho AV. Maternal death due to domestic violence: an unrecognized critical component of maternal mortality. *Rev Panam Salud Pública* 2005; 17(2): 123–129.

15. Boy A and Salihu HM. Intimate partner violence and birth outcomes: a systematic review. *Int J Fertil Women's Med* 2004; 49(4): 159–164.
16. Goo L and Harlow SD. Intimate partner violence affects skilled attendance at most recent delivery among women in Kenya. *Matern Child Health J* 2012; 16(5): 1131–1137.
17. Silverman JG, Decker MR, Reed E, et al. Intimate partner violence victimization prior to and during pregnancy among women residing in 26 U.S. states: associations with maternal and neonatal health. *Am J Obstet Gynecol* 2006; 195(1): 140–148.
18. Alio AP, Salihu HM, Nana PN, et al. Association between intimate partner violence and induced abortion in Cameroon. *Int J Gynaecol Obstet* 2011; 112(2): 83–87.
19. Silverman JG, Gupta J, Decker MR, et al. Intimate partner violence and unwanted pregnancy, miscarriage, induced abortion, and stillbirth among a national sample of Bangladeshi women. *BJOG* 2007; 114(10): 1246–1252.
20. Johri M, Morales RE, Boivin J-F, et al. Increased risk of miscarriage among women experiencing physical or sexual intimate partner violence during pregnancy in Guatemala City, Guatemala: cross-sectional study. *BMC Pregnancy Childbirth* 2011; 11: 49.
21. Rahman M, Nakamura K, Seino K, et al. Are survivors of intimate partner violence more likely to experience complications around delivery? Evidence from a national Bangladeshi sample. *Eur J Contracept Reprod Health Care* 2013; 18(1): 49–60.
22. Shneyderman Y and Kiely M. Intimate partner violence during pregnancy: victim or perpetrator? Does it make a difference? 21 June 2013. DOI: 10.1111/1471-0528.12357.
23. Chambliss LR. Intimate partner violence and its implication for pregnancy. *Clin Obstet Gynecol* 2008; 51(2): 385–397.
24. Sharps PW, Laughon K and Giangrande SK. Intimate partner violence and the childbearing year: maternal and infant health consequences. *Trauma Violence Abuse* 2007; 8(2): 105–116.
25. United Nations Millennium Development Goals. <http://www.un.org/millenniumgoals/maternal.shtml> (accessed 4 June 2011).
26. WHO. Making pregnancy safer: the critical role of the skilled attendant, http://www.who.int/maternal_child_adolescent/documents/9241591692/en/ (accessed 17 March 2013).
27. WHO. The World Health Report 2005-make every mother and child count, <http://www.who.int/whr/2005/en/index.html> (accessed 4 June 2011).
28. The Millennium Development Goal Report 2010, Addendum 2, http://mdgs.un.org/unsd/mdg/Resources/Static/Products/Progress2010/2010_Addendum_Goal5.pdf
29. Fotso J-C, Ezech A, Madise N, et al. What does access to maternal care mean among the urban poor? Factors associated with use of appropriate maternal health services in the slum settlements of Nairobi, Kenya. *Matern Child Health J* 2009; 13(1): 130–137.
30. Anwar I, Sami M, Akhtar N, et al. Inequity in maternal health-care services: evidence from home-based skilled-birth-attendant programmes in Bangladesh. *Bull World Health Organ* 2008; 86(4): 252–259.
31. Rahman M, Nakamura K, Seino K, et al. Intimate partner violence and use of reproductive health services among married women: evidence from a national Bangladeshi sample. *BMC Public Health* 2012; 12: 913.
32. Macro ORC. Demographic and Health Surveys, <http://www.measuredhs.com/>
33. The World Bank country classification, <http://data.worldbank.org/about/country-classifications/country-and-lending-groups>
34. WHO. Maternal mortality country profiles, http://www.who.int/gho/maternal_health/countries/en/index.html (accessed 28 June 2011).
35. United Nations Millennium Development Goals. <http://www.un.org/millenniumgoals/education.shtml>
36. Sambo LG, Kirigia JM and Ki-Zerbo G. Perceptions and viewpoints on proceedings of the Fifteenth Assembly of Heads of State and Government of the African Union Debate on Maternal, Newborn and Child Health and Development, 25–27 July 2010, Kampala, Uganda. *BMC Proceedings* 2011, 5(Suppl 5): S1. DOI:10.1186/1753-6561-5-S5-S1.
37. Pallitto CC, Garcia-Moreno C, Jansen HAFM, et al. Intimate partner violence, abortion, and unintended pregnancy: results from the WHO Multi-country Study on Women's Health and Domestic Violence. *Int J Gynaecol Obstet* 2013; 120(1): 3–9.
38. Kruk ME, Prescott MR and Galea S. Equity of skilled birth attendant utilization in developing countries: financing and policy determinants. *Am J Public Health* 2008; 98(1): 142–147.
39. Ahmed S, Creanga AA, Gillespie DG, et al. Economic status, education and empowerment: implications for maternal health service utilization in developing countries. *PLoS ONE* 2010; 5(6): e11190.
40. United Nations Millennium Development Goals. <http://www.un.org/millenniumgoals/gender.shtml> (n.d.; accessed 17 May 2013).
41. Connor PD, Nouer SS, Speck PM, et al. Nursing students and intimate partner violence education: improving and integrating knowledge into health care curricula. *J Prof Nurs* 2013; 29(4): 233–239.
42. Wathen CN, Tanaka M, Catallo C, et al. Are clinicians being prepared to care for abused women? A survey of health professional education in Ontario, Canada. *BMC Med Educ* 2009; 9: 34.
43. Buranosky R, Hess R, McNeil MA, et al. Once is not enough: effective strategies for medical student education on intimate partner violence. *Violence against Women* 2012; 18(10): 1192–1212.
44. Connor PD, Nouer SS, Mackey SN, et al. Intimate partner violence education for medical students: toward a comprehensive curriculum revision. *South Med J* 2012; 105(4): 211–215.
45. Taft A, O'Doherty L, Hegarty K, et al. Screening women for intimate partner violence in healthcare settings. *Cochrane Database Syst Rev* 2013; 4: CD007007.
46. Waalen J, Goodwin MM, Spitz AM, et al. Screening for intimate partner violence by health care providers. Barriers and interventions. *Am J Prev Med* 2000; 19(4): 230–237.
47. Nelson HD, Bougatsos C and Blazina I. Screening women for intimate partner violence: a systematic review to update the U.S. Preventive Services Task Force recommendation. *Ann Intern Med* 2012; 156(11): 796–808; W-279, W-280, W-281, W-282.