

# Preoperative computed tomography-guided localization for pulmonary nodules: a randomized controlled trial of coil and anchored needle localization

Ya-Nan Lv<sup>1</sup>, Wen-Tao Zhang<sup>2</sup>, Ying Wang<sup>3</sup>, Gang Wang<sup>3</sup>

<sup>1</sup>Department of Radiology, Xuzhou Universal Medical Imaging Diagnostic Center, Xuzhou, China

<sup>2</sup>Department of Radiology, The First Hospital, Zhangjiakou, China

<sup>3</sup>Department of Radiology, Xuzhou Central Hospital, Xuzhou, China

Videosurgery Miniinv 2024; 19 (2): 178–186  
DOI: <https://doi.org/10.5114/wiitm.2024.139198>

## Abstract

**Introduction:** In patients with pulmonary nodules (PNs), computed tomography (CT)-guided localization is commonly performed prior to the resection of these nodules through video-assisted thoracic surgery (VATS).

**Aim:** To evaluate the relative clinical efficacy of coil and anchored needle (AN) insertion as approaches to preoperative CT-guided PN localization.

**Material and methods:** This single-center, prospective, open-label, randomized controlled trial (registration number: NCT05183945) enrolled consecutive patients from January 2022 to July 2022, assigning these patients at random to undergo either coil or AN localization prior to VATS. Efficacy and safety outcomes in these two groups were then compared.

**Results:** This study enrolled in total 100 patients with 120 PNs who were assigned at random to the coil (patients = 50; PNs = 60) and AN (patients = 50; PNs = 60) localization groups. The respective technical success rates for coil and AN localization were 98.3% (59/60) and 100% (60/60), with no significant difference between the groups ( $p = 1.000$ ). The coil group had a significantly longer median duration of localization relative to the AN group (16.0 min vs. 8.0 min,  $p < 0.001$ ). Similar rates of localization-related pneumothorax (8.3% vs. 5.0%,  $p = 0.715$ ) and pulmonary hemorrhage (5.0% vs. 13.3%,  $p = 0.110$ ) were observed in both groups. In addition, the VATS resection procedures achieved 100% technical success rates in both of these localization groups.

**Conclusions:** Both coil- and AN-based localization approaches can be successfully employed to localize PNs prior to VATS resection, with the AN localization procedure requiring less time to complete on average as compared to the coil-based approach.

**Key words:** localization, pulmonary nodule, coil, anchored needle.

## Introduction

Currently, low-dose computed tomography (CT) approaches are routinely used for the physical examination of patients in a wide range of settings [1–3]. As low-dose CT screening for lung cancer has become more common, pulmonary nodule (PN) detection rates have risen significantly [1–3]. Reported

rates of PN malignancy range from 5% to 70% [4, 5], and the diagnosis and treatment of lung cancer at an early stage can lead to significant reductions in patient mortality [6].

Video-assisted thoracic surgery (VATS) procedures are widely used to resect PNs [7]. To improve rates of VATS resection and to reduce rates of con-

### Address for correspondence

Gang Wang, Department of Radiology, Xuzhou Central Hospital, Xuzhou, China, e-mail: [wg404302382@163.com](mailto:wg404302382@163.com)

version to thoracotomy, preoperative localization is a common clinical strategy [8]. These localization procedures are performed using a variety of liquid and solid localization materials, the latter of which are not susceptible to diffusion away from the site of insertion and can be detected via palpation during VATS procedures [8]. Two of the most common solid localization materials are coil and hook-wire devices [8]. While coil localization is generally associated with lower rates of complications, the operative procedures necessary to successfully place these coils tend to be more complicated than those necessary for hook-wire localization [8, 9]. To reduce hook-wire localization complication rates while maintaining operative simplicity, anchored needle (AN) localization approaches based on the hook-wire strategy have been developed [10]. In contrast to hook-wire approaches, AN localization replaces the hook for an anchor-shaped device with four claws, providing superior stability. The anchor is also connected with smooth sutures in place of steel wire, which may provide patients with better comfort after localization is complete [10]. While there have been several studies to date comparing the clinical efficacy of hook-wire and coil localization strategies for patients with PNs [9], corresponding studies comparing the coil- and AN-based localization of PNs are lacking.

## Aim

Here, the relative safety and clinical efficacy of CT-guided coil and AN localization approaches for patients with PNs were compared through a randomized controlled trial.

## Material and methods

Our Institutional Review Board approved this single-center, prospective, open-label, randomized controlled trial, which was registered at ClinicalTrials.gov (NCT05183945), with all patients having provided written informed consent.

### Patient selection

From January 2022 to July 2022, consecutive patients with PNs scheduled to undergo VATS procedures were randomly assigned to undergo preoperative localization using coil- or AN-based approaches. To be eligible for inclusion, patients needed to meet

the following criteria: (a) patients with PNs, (b) PNs' diameter > 5 mm, and (c) patients whose clinical and/or radiological findings were consistent with an intermediate-to-high risk of malignancy [4]. Patients were excluded from this study if any of the following were true: (a) they exhibited calcified PNs, (b) they exhibited PNs that grew smaller over the course of follow-up, (c) they exhibited typical metastases or any severe comorbidities; or (d) they declined trial participation.

CT screening was used to detect the PNs in all patients, with PN number, size, and location having been recorded.

### Randomization

A block randomization strategy with a block size of 4 was used to randomize eligible patients into the coil and AN groups at a 1 : 1 ratio. Computer-generated random numbers were sealed within sequentially numbered opaque envelopes. A member of the Science and Education department who had no further role in this trial opened these envelopes before stent insertion.

### CT-guided localization

Two interventional operators with more than 5 years of experience performing CT-guided interventional procedures performed all procedures with a 16-slice CT scanner (Siemens, Berlin, Germany) based on the following settings: 120 kV, 150 mA, and 1 mm thickness. Patient positioning was determined based on the locations of target PNs, while the selected needle pathway was the shortest path from the skin to the target PN, which allowed operators to avoid large blood vessels, ribs, and lung bullae. All localization was performed under local anesthesia.

For coil localization, a fiber-coated coil that was 0.038 inches in diameter and 50 mm in length (Cook, IN, USA) was utilized. Using the appropriate needle pathway, an 18G coaxial needle (Precisa, Italy) was used to puncture the lung, advancing the tip of the needle until it was within 10 mm of the target PN. The coil was then inserted such that the tail of the coil remained visible [10], using the needle core to push the coil from the loading cannula into the needle sheath. After partially advancing the coil into the lung tissue, the needle sheath was smoothly removed such that the coil tail remained

above the visceral pleura at a distance determined by the distance between the target PN and the pleura.

To perform AN localization, a 20G disposable PN localization needle 10 cm or 15 cm in length was utilized (Senscure, Ningbo, China). The procedures for needle puncture were the same as those for the coil group. After the tip of the needle had reached the target position, the safety buckle was removed and the pusher was depressed such that the anchor was released in the lung parenchyma around the target PN. Following the subsequent removal of the needle, a tri-colored suture marker remained visible within the needle pathway, with the distal end of the suture remaining outside of the pleura.

In patients undergoing localization of multiple PNs, all target nodules were detected with a one-stage CT-guided localization procedure. Post-localization CT scans were used to confirm the locations of the chosen localization materials and to evaluate any potential localization-related complications in all patients.

### VATS procedures

Routine VATS-guided wedge or segmental resection procedures were performed under general anesthesia within 3 h after localization was complete. During these procedures, the utilized localization materials could be readily identified by surgeons and palpated by hand as needed. Surgeons were able to confirm target nodule positions based on the distance between these nodules and the target localization marker upon CT examination. Based on the distance between the pleura and the target nodule, wedge or segmental resection was performed using a cutting suture device. All resected samples underwent the analysis of intraoperatively collected frozen pathology sections. When invasive lung cancer was diagnosed by this approach, patients underwent additional lobectomy and lymphadenectomy. In all other instances, lobectomy was not conducted. Lymph node sampling was conducted for patients diagnosed with mini-invasive lung cancer.

### Definitions and endpoints

CT-guided localization technical success was defined by the successful visualization of the coil/AN during VATS resection without the dislodgement of

these materials, together with the successful removal of the target PN within the resected portion of the lung parenchyma. CT-guided localization procedural duration was measured as the interval from the first to the last CT scan. A visual analog scale (VAS; 0–10 points) was used to assess patient pain severity. The VATS procedural duration was measured as the interval from the first incision to wound closure.

CT-guided localization technical success rates were the primary study outcome, while secondary outcomes included the duration of localization, VAS scores, the incidence of localization-related complications, VATS procedural duration, VATS type, and final patient diagnoses.

### Statistical analysis

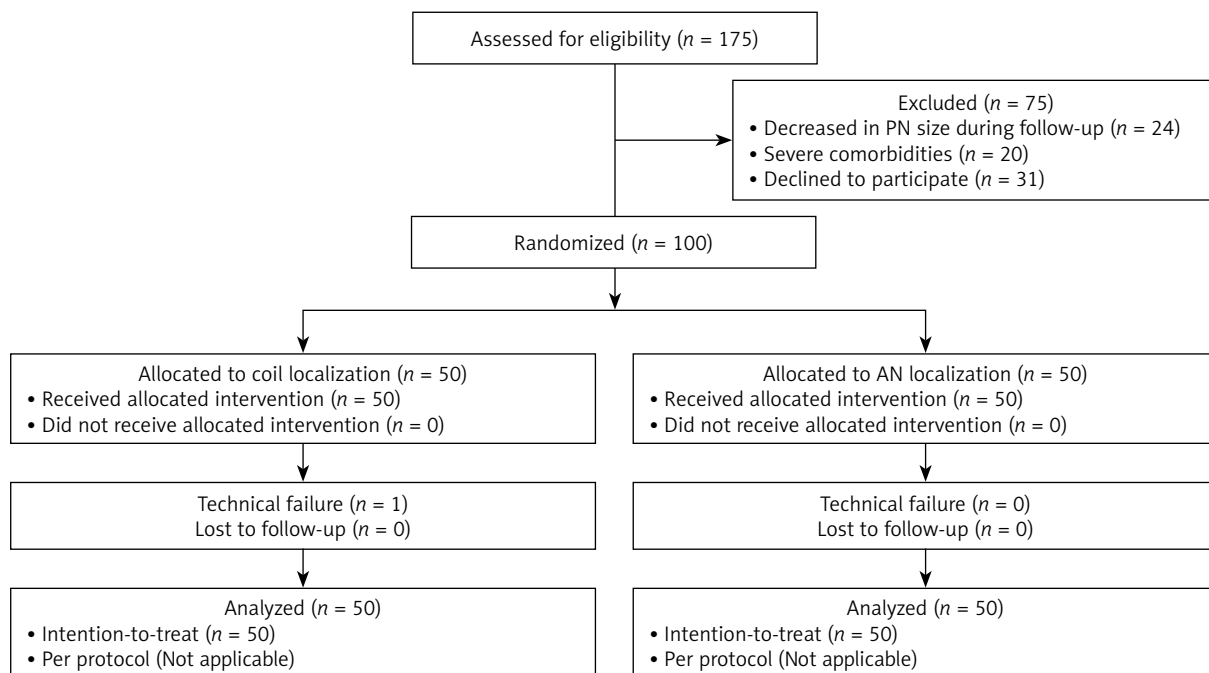
This was developed as a noninferiority trial, with initial estimates of a technical success rate of 97% for localization procedures performed in both groups of patients [8, 10]. Differences in the rates of technical success between these two localization strategies were assessed with a -10% noninferiority margin based on a one-sided significance level of 0.025. Using these calculations, a minimum of 100 patients ( $n = 50/\text{group}$ ) was deemed necessary to have 80% statistical power necessary to demonstrate noninferiority when accounting for an approximate 10% dropout rate.

The present study was conducted using an intention-to-treat analytical approach based on all enrolled patients. Continuous results that were normally distributed were reported as means  $\pm$  standard deviations, whereas they were otherwise reported as medians (Q1; Q3), and they were compared with Student's *t*-test or the Mann-Whitney *U* test. Categorical data were compared with the  $\chi^2$  test or Fisher's exact test. A logistic regression approach was used to compare risk factors associated with localization-related complications.  $P < 0.05$  served as the threshold for significance, and all statistical analyses were performed in SPSS 16.0 (SPSS, Inc., IL, USA).

## Results

### Patients

This study ultimately enrolled 100 patients with 120 PNs who were randomly assigned to the coil (patients = 50; PNs = 60) and AN (patients = 50;

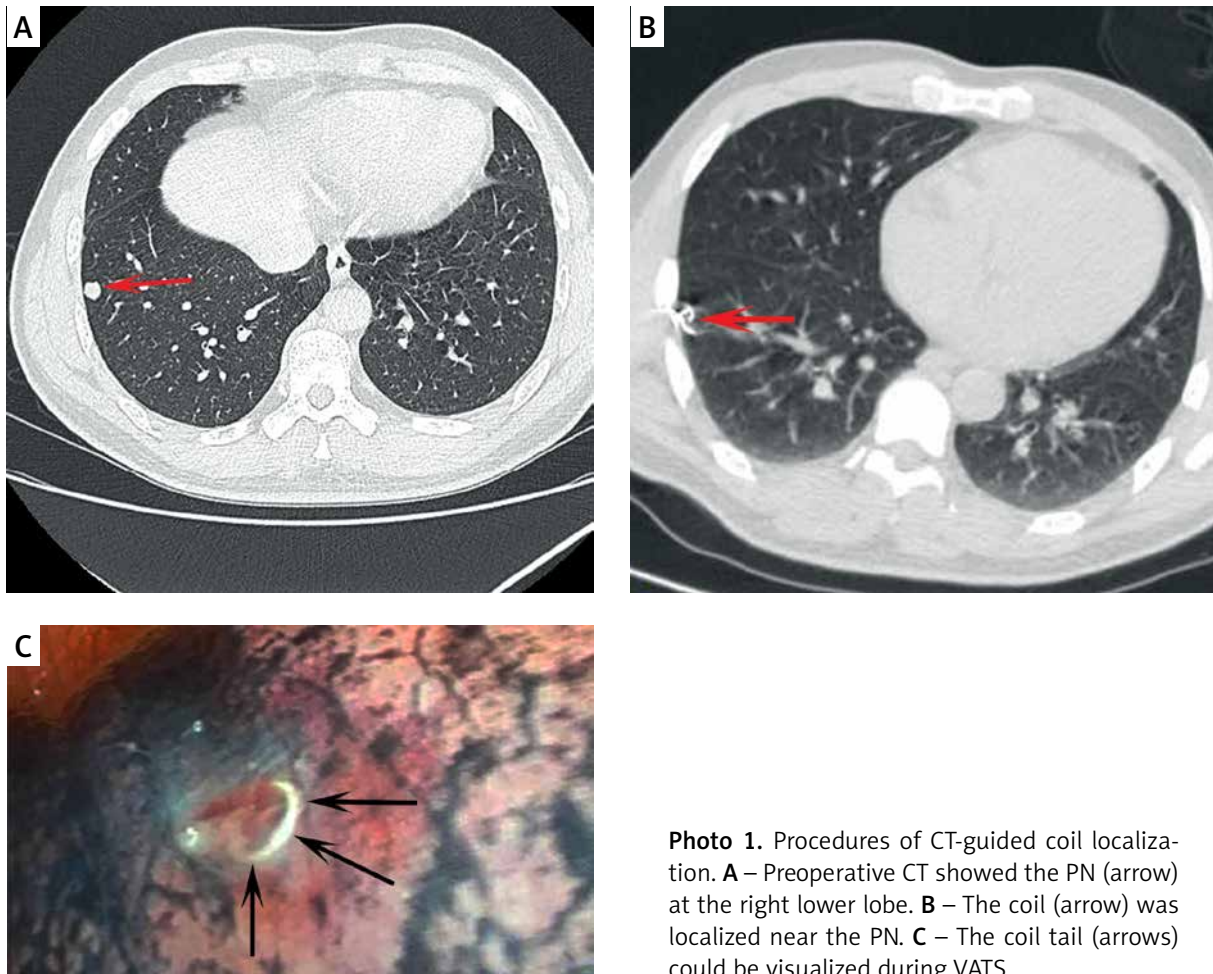


**Figure 1.** Flowchart of this study

**Table I.** Comparison of baseline characteristics between groups

Parameter	Coil group	Anchored needle group	P-value
Number of patients	50	50	–
Age [years]	59.7 ±9.9	55.6 ±11.7	0.064
Gender:			1.000
Male	22	22	
Female	28	28	
Smoking history	9	11	0.617
Malignant history	11	8	0.444
Nodule number	60	60	1.000
Single	42	42	
Multiple	8	8	
Diameter [mm]	9.4 ±4.7	8.6 ±3.0	0.247
Nodule-pleura distance [mm]	5.5 (Q1: 1.3; Q3: 14.8)	5.0 (Q1: 2.0; Q3: 10.0)	0.588
Nature of the nodules:			0.008
Solid	29	15	
GGN	31	45	
Sides of the lung:			0.705
Left	21	23	
Right	39	37	
Lobes:			0.201
Upper	25	32	
Non-upper	35	28	

GGN – ground glass nodule.



**Photo 1.** Procedures of CT-guided coil localization. **A** – Preoperative CT showed the PN (arrow) at the right lower lobe. **B** – The coil (arrow) was localized near the PN. **C** – The coil tail (arrows) could be visualized during VATS

PNs = 60) groups. Patient selection-related details are presented in Figure 1, while baseline patient data are presented in Table I. With the exception of the distribution of the nature of these PNs, all other data were comparable between these groups.

### PN localization

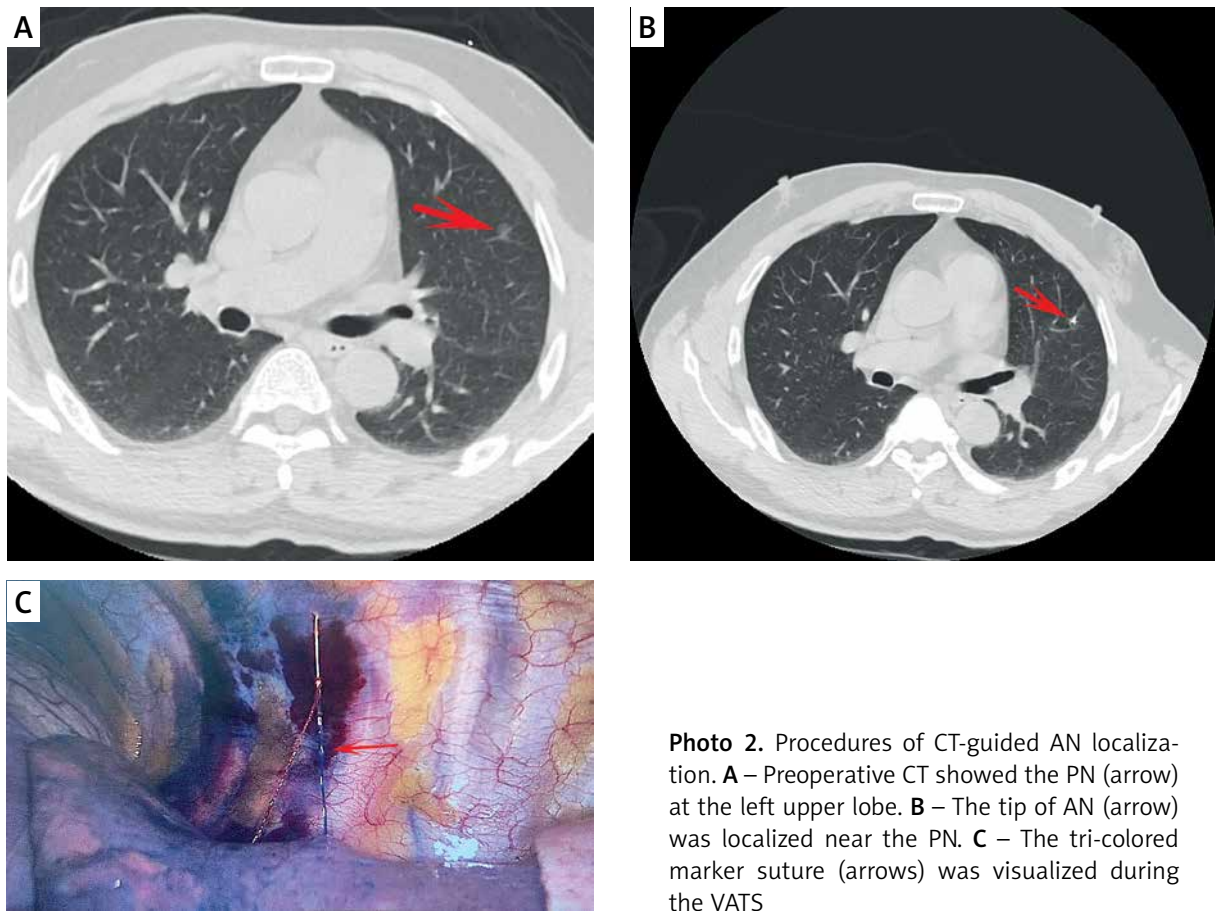
The respective technical success rates for localization procedures performed in the coil (Photo 1) and AN (Photo 2) groups were 98.3% (59/60) and 100% (60/60), with no significant difference between these groups ( $p = 1.000$ , Table II). The one instance of technical failure in the coil group was the result of the entire placement of the coil. Coil/AN dislodgement did not occur in any case. The median localization procedure duration in the coil group was significantly longer than that in the AN group (16.0 vs. 8.0 min,  $p < 0.001$ ). There was no signifi-

cant difference in VAS scores between these groups ( $3.4 \pm 0.6$  vs.  $3.4 \pm 0.6$ ,  $p = 0.715$ ).

### Localization-related complication rates

Pneumothorax impacted a total of 5 (8.3%) and 3 (5.0%) patients in the coil and AN groups, respectively, with the incidence rate being comparable in both groups ( $p = 0.715$ ). None of these instances of pneumothorax required further medical intervention, nor did they interfere with the VATS procedure. Based on logistic regression analyses, a longer localization procedural duration was independently associated with a greater risk of pneumothorax ( $p = 0.034$ , Table III).

Pulmonary hemorrhage impacted a total of 3 (5.0%) and 8 (13.3%) patients in the coil and AN groups, respectively, with no significant difference between these groups ( $p = 0.110$ ). Pulmonary hem-



**Photo 2.** Procedures of CT-guided AN localization. **A** – Preoperative CT showed the PN (arrow) at the left upper lobe. **B** – The tip of AN (arrow) was localized near the PN. **C** – The tri-colored marker suture (arrows) was visualized during the VATS

orrhage did not interfere with VATS procedures in any case, and logistic regression analyses failed to identify any factors significantly associated with the risk of pulmonary hemorrhage.

### VATS resection

Technical success rates for limited VATS resection procedures were 100% in both the coil and AN

groups (Table IV). Even in the one instance of technical failure in the coil group, VATS wedge resection was performed successfully as the operator was able to palpate the coil intraoperatively. A similar median VATS procedural duration was observed in the coil and AN groups (100 min vs. 85 min,  $p = 0.549$ ). For details regarding surgery types and pathological diagnoses (Table IV). Of the patients diagnosed with

**Table II.** Comparison of localization-related data

Parameter	Coil group	Anchored needle group	P-value
Successful localization rate	98.3% (59/60)	100% (60/60)	1.000
Dislodgement	0	0	–
Duration of localization [min]	16.0 (Q1: 13.0; Q3: 19.3)	8.0 (Q1: 6.0; Q3: 13.5)	0.001
VAS	3.4 ±0.6	3.4 ±0.6	0.743
Complications			
Pneumothorax	5 (8.3%)	3 (5.0%)	0.715
Pulmonary hemorrhage	3 (5.0%)	8 (13.3%)	0.110

VAS – visual analog scale.

**Table III.** Predictors of pneumothorax after localization

Variables	Univariate analysis			Multivariate analysis		
	Hazard ratio	95% CI	P-value	Hazard ratio	95% CI	P-value
Age [years]	1.028	0.958–1.103	0.443			
Gender:						
Male	1			1		
Female	0.235	0.045–1.225	0.086	0.277	0.051–1.512	0.138
Smoking history	2.647	0.576–12.165	0.211			
Tumor history	2.647	0.576–12.165	0.211			
Number of nodules:						
Single	1					
Multiple	1.998	0.805–4.960	0.136			
Lung side:						
Right	1					
Left	0.474	0.091–2.474	0.376			
Lobe:						
Non-upper	1					
Upper	0.268	0.051–1.399	0.118			
Diameter	0.790	0.585–1.069	0.127			
Lesion-pleura distance [mm]	0.994	0.908–1.089	0.901			
Duration of localization [min]	1.076	1.014–1.142	0.016	1.068	1.005–1.135	0.034
Localization materials:						
Coil	1					
Anchored needle	0.574	0.130–2.545	0.465			

**Table IV.** Comparison of VATS related data

Parameter	Coil group	Anchored needle group	P-value
Technical success of limited resection	100%	100%	–
Duration of VATS [min]	100.0 (Q1: 68.8; Q3: 126.3)	85.0 (Q1: 60.0; Q3: 152.5)	0.549
Surgical types:			0.260
Wedge resection	30	35	
Segmental resection	9	12	
Wedge/segmental resection + lobectomy	21	13	
Final diagnoses:			0.001
Invasive adenocarcinoma	22	15	
Mini-invasive adenocarcinoma	6	19	
Adenocarcinoma <i>in situ</i>	1	8	
Precancerous lesion	9	2	
Metastasis	1	0	
Benign	21	6	

VATS – video-assisted thoracoscopic surgery.

invasive adenocarcinoma, three (1 in the coil group, 2 in the AN group) did not undergo subsequent lobectomy as they lacked sufficient pulmonary functional reserve.

## Discussion

Preoperative CT-guided localization is widely used in patients with PNs scheduled to undergo VATS resection, as it can facilitate a significant reduction in the need for conversion to thoracotomy [11]. These preoperative localization strategies can also reportedly decrease VATS procedural duration and stapler utilization [11]. An effective localization marker should exhibit good stability, ease of implementation, soft consistency, and ease of visualization during VATS procedures. Coil localization offers advantages including the stability of the coil in the lung parenchyma owing to its ring-shaped construction, the ease of coil tail visualization during VATS procedures owing to it remaining on the pleura, and the low rates of associated complications as the coil does not penetrate the thoracic cavity. However, coil localization necessitates a high degree of technical skill, and the ring-like shape of the coil can lead to it accidentally being fully inserted within the lung parenchyma in some cases [11].

Comparable rates of technical success were observed for both tested localization strategies (98.3% vs. 100%,  $p = 1.000$ ), with no patients having experienced coil or AN dislodgement. This suggests that AN materials exhibit similarity similar to those of coils. However, the AN approach did reduce the procedural duration relative to coil localization (8.0 vs. 16.0 min,  $p = 0.001$ ), potentially because this localization strategy is simpler [10, 12].

Here, the safety outcomes in the coil and AN groups were comparable, with similar rates of both pneumothorax (8.3% and 5.0%) and hemorrhage (5.0% and 13.3%) for patients who underwent either of these localization procedures, and with these rates being lower than those reportedly associated with hook-wire localization (35% and 16%) [13]. In logistic regression analyses, longer localization duration was independently associated with pneumothorax risk, consistent with what has been reported previously with respect to CT-guided localization or biopsy [14–16]. No risk factors associated with pulmonary hemorrhage were identified in this study, potentially owing to the small sample size.

As both the coil and AN localization materials can be readily visualized while performing VATS procedures, both can be used as an effective means of guiding VATS limited resection, although the resection depth should be confirmed in the coil group with reference to preoperative CT images [17]. AN localization, in contrast, utilizes a tri-colored marker suture that can provide direct confirmation of resection depth for the target PN [18, 19]. While there was no significant difference in VATS duration between these groups ( $p = 0.549$ ), median VATS duration was shorter in the coil group than in the coil group (85 vs. 100 min).

In the present study, lobectomy was required in 28.3% of PNs owing to the presence of invasive adenocarcinoma, whereas in the remaining cases, limited wedge or segmental resection was sufficient as a surgical approach. As such, adequate preoperative localization is an effective approach to preserving lung function in treated patients.

There are certain limitations to the present study. For one, while a block randomization approach was employed, this randomization was not stratified according to the nature of patient PNs. Imbalance in the nature of PNs between groups may have contributed to some degree of selection bias. The overall sample size was also fairly limited. Lastly, this was a single-center study, so the results warrant further multi-center validation.

## Conclusions

The present results suggest that both coil- and AN-based localization techniques can enable the successful localization of target PNs prior to VATS resection, with the AN localization approach saving operative time relative to the coil-based approach.

## Acknowledgments

Ya-Nan Lv, Wen-Tao Zhang, and Ying Wang contributed equally to this study.

## Ethical approval

Approval number: XZXY-LJ-20151210-082.

## Conflict of interest

The authors declare no conflict of interest.



## References

1. Hoffman RM, Atallah RP, Struble RD, Badgett RG. Lung cancer screening with low-dose CT: a meta-analysis. *J Gen Intern Med* 2020; 35: 3015-25.
2. Li N, Tan F, Chen W, et al. One-off low-dose CT for lung cancer screening in China: a multicentre, population-based, prospective cohort study. *Lancet Respir Med* 2022; 10: 378-91.
3. Dickson JL, Horst C, Nair A, et al. Hesitancy around low-dose CT screening for lung cancer. *Ann Oncol* 2022; 33: 34-41.
4. Chan EY, Gaur P, Ge Y, et al. Management of the solitary pulmonary nodule. *Arch Pathol Lab Med* 2017; 141: 927-31.
5. Chen XB, Yan RY, Zhao K, et al. Nomogram for the prediction of malignancy in small (8-20 mm) indeterminate solid solitary pulmonary nodules in Chinese populations. *Cancer Manag Res* 2019; 11: 9439-48.
6. Nawa T. Low-dose CT screening for lung cancer reduced lung cancer mortality in Hitachi City. *Int J Radiat Biol* 2019; 95: 1441-6.
7. Wang SJ, Gao XX, Hui H, et al. Comparison between preoperative hook-wire and liquid material localization for pulmonary nodules: a meta-analysis. *Videosurgery Miniinv* 2023; 18: 401-9.
8. Park CH, Han K, Hur J, et al. Comparative effectiveness and safety of preoperative lung localization for pulmonary nodules: a systematic review and meta-analysis. *Chest* 2017; 151: 316-28.
9. Wang JL, Xia FF, Dong AH, Lu Y. Comparison between coil and hook-wire localization before video-assisted thoracoscopic surgery for lung nodules: a systematic review and meta-analysis. *Videosurgery Miniinv* 2022; 17: 441-9.
10. Huang YY, Liu X, Shi YB, Wang T. Preoperative computed tomography-guided localization for lung nodules: localization needle versus coil. *Minim Invasive Ther Allied Technol* 2022; 31: 948-53.
11. Finley RJ, Mayo JR, Grant K, et al. Preoperative computed tomography-guided microcoil localization of small peripheral pulmonary nodules: a prospective randomized controlled trial. *J Thorac Cardiovasc Surg* 2015; 149: 26-31.
12. Huang YY, Wang T, Fu YF, et al. Comparison of the effectiveness of anchoring needles and coils in localizing multiple nodules in the lung. *BMC Pulm Med* 2022; 22: 393.
13. Yao F, Wang J, Yao J, et al. Reevaluation of the efficacy of preoperative computed tomography-guided hook wire localization: a retrospective analysis. *Int J Surg* 2018; 51: 24-30.
14. Li GC, Fu YF, Cao W, et al. Computed tomography-guided percutaneous cutting needle biopsy for small ( $\leq 20$ mm) lung nodules. *Medicine (Baltimore)* 2017; 96: e8703.
15. Lin J, Wang LF, Wu AL, et al. Preoperative lung nodule localization: comparison of hook-wire and indocyanine green. *Videosurgery Miniinv* 2023; 18: 149-56.
16. Han R, Wang LF, Teng F, et al. Presurgical computed tomography-guided localization of lung ground glass nodules: comparing hook-wire and indocyanine green. *World J Surg Oncol* 2024; 22: 51.
17. Teng F, Wu AL, Yang S, et al. Preoperative computed tomography-guided coil localization for multiple lung nodules. *Ther Adv Respir Dis* 2020; 14: 1753466620909762.
18. Fu Y, Huang Y, Wang T, Cao W. Application comparison of CT-guided pulmonary nodule positioning needle and micro-coil positioning before solitary pulmonary nodule thoracoscopic resection. *Chin J Interv Radiol* 2022; 10: 272-7.
19. Liu D, Zhang R, Yu X, et al. Comparison of two methods for CT-guided pulmonary nodule location before thoracoscopic surgery. *Videosurgery Miniinv* 2023; 18: 680-9.

**Received:** 30.03.2024

**Accepted:** 14.04.2024

**Online publication:** 24.04.2024