

The Dual Impact of HIV-1 Infection and Aging on Naïve CD4⁺ T-Cells: Additive and Distinct Patterns of Impairment

Tammy M. Rickabaugh¹, Ryan D. Kilpatrick^{1,7}, Lance E. Hultin¹, Patricia M. Hultin⁷, Mary Ann Hausner¹, Catherine A. Sugar³, Keri N. Althoff⁴, Joseph B. Margolick⁵, Charles R. Rinaldo⁶, Roger Detels⁷, John Phair⁸, Rita B. Effros^{1,2}, Beth D. Jamieson^{1*}

1 Department of Medicine, UCLA AIDS Institute, David Geffen School of Medicine, University of California Los Angeles, Los Angeles, California, United States of America, **2** Department of Pathology and Laboratory Medicine, UCLA AIDS Institute, University of California Los Angeles, Los Angeles, California, United States of America, **3** Department of Biostatistics, School of Public Health, University of California Los Angeles, Los Angeles, California, United States of America, **4** Department of Epidemiology, Johns Hopkins Bloomberg School of Public Health, Baltimore, Maryland, United States of America, **5** Department of Molecular Microbiology and Immunology, Johns Hopkins Bloomberg School of Public Health, Baltimore, Maryland, United States of America, **6** Graduate School of Public Health, University of Pittsburgh, Pittsburgh, Pennsylvania, United States of America, **7** Department of Epidemiology, School of Public Health, University of California Los Angeles, Los Angeles, California, United States of America, **8** Feinberg School of Medicine, Northwestern University, Chicago, Illinois, United States of America

Abstract

HIV-1-infected adults over the age of 50 years progress to AIDS more rapidly than adults in their twenties or thirties. In addition, HIV-1-infected individuals receiving antiretroviral therapy (ART) present with clinical diseases, such as various cancers and liver disease, more commonly seen in older uninfected adults. These observations suggest that HIV-1 infection in older persons can have detrimental immunological effects that are not completely reversed by ART. As naïve T-cells are critically important in responses to neoantigens, we first analyzed two subsets (CD45RA⁺CD31⁺ and CD45RA⁺CD31⁻) within the naïve CD4⁺ T-cell compartment in young (20–32 years old) and older (39–58 years old), ART-naïve, HIV-1 seropositive individuals within 1–3 years of infection and in age-matched seronegative controls. HIV-1 infection in the young cohort was associated with lower absolute numbers of, and shorter telomere lengths within, both CD45RA⁺CD31⁺CD4⁺ and CD45RA⁺CD31⁻CD4⁺ T-cell subsets in comparison to age-matched seronegative controls, changes that resembled seronegative individuals who were decades older. Longitudinal analysis provided evidence of thymic emigration and reconstitution of CD45RA⁺CD31⁺CD4⁺ T-cells two years post-ART, but minimal reconstitution of the CD45RA⁺CD31⁻CD4⁺ subset, which could impair *de novo* immune responses. For both ART-naïve and ART-treated HIV-1-infected adults, a renewable pool of thymic emigrants is necessary to maintain CD4⁺ T-cell homeostasis. Overall, these results offer a partial explanation both for the faster disease progression of older adults and the observation that viral responders to ART present with clinical diseases associated with older adults.

Citation: Rickabaugh TM, Kilpatrick RD, Hultin LE, Hultin PM, Hausner MA, et al. (2011) The Dual Impact of HIV-1 Infection and Aging on Naïve CD4⁺ T-Cells: Additive and Distinct Patterns of Impairment. PLoS ONE 6(1): e16459. doi:10.1371/journal.pone.0016459

Editor: Derya Unutmaz, New York University, United States of America

Received: October 6, 2010; **Accepted:** December 16, 2010; **Published:** January 26, 2011

Copyright: © 2011 Rickabaugh et al. This is an open-access article distributed under the terms of the Creative Commons Attribution License, which permits unrestricted use, distribution, and reproduction in any medium, provided the original author and source are credited.

Funding: This study was supported by NIAID Grant 5RO1-AI-058845 and NIA Grant 1RO1-AG-030327 awarded to B.D. Jamieson, P.I. T.M. Rickabaugh was also supported by the National Institutes of Health under Ruth L. Kirschstein National Research Service Award, 5 T32 CA009120, from the National Cancer Institute. The MACS is funded by the National Institute of Allergy and Infectious Diseases, with additional supplemental funding from the National Cancer Institute and the National Heart, Lung and Blood Institute: UO1-AI-35042, 5-MO1-RR-00722 (GCRC), UO1-AI-35043, UO1-AI-37984, UO1-AI-35039, UO1-AI-35040, UO1-AI-37613, UO1-AI-35041. Flow cytometry was performed in the UCLA Jonsson Comprehensive Cancer Center (JCCC) and Center for AIDS Research Flow Cytometry Core Facility that is supported by National Institutes of Health awards CA-16042 and AI-28697, and by the JCCC, the UCLA AIDS Institute, and the David Geffen School of Medicine at UCLA. The funders had no role in study design, data collection and analysis, decision to publish or preparation of the manuscript.

Competing Interests: The authors have declared that no competing interests exist.

* E-mail: jamieson@mednet.ucla.edu

Introduction

The lifespan of an HIV-1-infected North American or European individual is shortened by an average of 10 years, despite antiretroviral therapy (ART) [1]. Many of the causes of morbidity and mortality in these individuals are similar to those more commonly observed in uninfected older adults (50–65 years of age) and the elderly (>65 years of age), and include frailty [2], non-Hodgkin's lymphoma [3], anal and cervical carcinomas [4,5], osteoporosis [6,7], liver [8–10] and renal impairment [11], cardiovascular disease [12,13], diabetes [14] and hypertension [14,15]. The diminished lifespan and higher prevalence of these

diseases in HIV-1-infected individuals, in comparison to age-matched uninfected controls, has led to the theory that HIV-1 infection causes accelerated aging in multiple organ systems. As it is not clear whether HIV-1 contributes to age-inappropriate clinical manifestations through mechanisms distinct from aging, a better understanding of the effects of HIV-1 infection and aging on various organ systems is essential to future treatment of HIV-1-infected individuals.

Survival time for HIV-1-infected adults both pre- and post-ART is closely correlated with CD4⁺ T-cell counts. The life-expectancy of an untreated HIV-1-infected individual with 200 CD4⁺ T-cells/mm³ is approximately one to two years [16]. An ART-treated, 20-

year-old adult with a CD4⁺ T-cell count under 200 cells/mm³ at ART initiation is predicted to survive 32 years, compared to 50 years for an age-matched individual who initiates ART at a higher CD4⁺ T-cell count [16]. An increased risk for frailty is also associated with decreased CD4⁺ T-cell counts pre- and post-ART initiation, as is the risk for non-Hodgkin lymphoma [2,3]. Poor CD4⁺ T-cell recovery upon initiation of ART is also correlated with an increased risk for both AIDS and non-AIDS diseases [17], emphasizing the important role of the CD4⁺ T-cell compartment in maintaining good health.

Although HIV-1 infection of naïve CD4⁺ T-cells occurs at low frequency in comparison to that of activated effector/memory CD4⁺ T-cells, HIV-1 infection is associated with quantitative and qualitative changes within the naïve CD4⁺ T-cell compartment in both children and adults [18–21]. In HIV-1-infected adults, a loss of naïve CD4⁺ T-cells precedes the loss of T-cell homeostasis and progression to AIDS [20], and inverted naïve to effector/memory ratios are not always restored upon administration of ART [17,22]. Since reconstitution of the naïve T-cell compartment contributes to reconstitution of overall CD4⁺ T-cell counts, a continued deficit in naïve CD4⁺ T-cell numbers would have downstream implications for the effector/memory compartment. In addition, functional defects, such as diminished antigen-specific proliferative responses [23], persist in the naïve CD4⁺ T-cell compartment, despite treatment. As naïve CD4⁺ T-cell proliferative responses post-ART predict immune responses to immunization with neoantigens [24], it is possible that an impaired naïve CD4⁺ T-cell compartment may contribute to the clinical observations regarding poor health and age-associated pathologies post-ART.

Aging, in the absence of HIV infection, is also associated with quantitative and qualitative changes within the naïve CD4⁺ T-cell compartment [25–27]. Decreased numbers of recent thymic emigrants (RTE), shortened telomeres, hyporesponsiveness to stimulation, decreased proliferative capacity, reduced IL-2 production, alterations in signal transduction and changes in cell surface phenotype [26–28] have all been reported. These changes likely contribute to the poor response to vaccines and increased susceptibility to infectious diseases and neoplasms reported for older adults [29–31] and possibly also contribute to the more rapid disease progression in HIV-1-infected individuals over 50 years of age.

Many factors, including co-infections and toxicity, or negative side effects, of antiretroviral drugs, are likely to contribute to the decreased lifespan and increased morbidities seen in HIV-1-infected individuals. In the current study, we address the question of whether HIV-1 infection accelerates the aging process by characterizing the effects of HIV-1 infection and aging on the naïve CD4⁺ T-cell compartment. We investigate whether the negative effects of HIV-1 infection and aging on the naïve CD4⁺ T-cell compartment are additive or interactive. To this end, we subdivided the naïve CD4⁺ T-cell compartment into two biologically disparate subsets based on the surface expression of PECAM-1 (CD31), which distinguishes TREC high (CD31⁺) naïve CD4⁺ T-cells from their proliferative progeny, the TREC low (CD31⁻) naïve CD4⁺ T-cell subset [27,32]. We had previously shown that aging is associated with changes in the relative proportions of these two subsets and with telomere shortening within cells from both subsets [27]. Therefore, in the current study we compared the two naïve CD4⁺ T-cell subsets within younger (20–32 years old) and older (39–58 years old) HIV-1 seropositive (SP) ART-naïve adults relatively early in infection, as well as with HIV-1 seronegative (SN) age-matched adults. Our results suggest that the effects of HIV-1 infection and aging on the the naïve

CD4⁺ T-cell compartment are both additive and distinct, and that HIV-1 induced impairments are not fully restored to an age-appropriate status by ART.

Materials and Methods

Ethics Statement

All study participants from the cross-sectional study were recruited from the Los Angeles area. This study was approved by the University of California, Los Angeles Medical Institutional Review Board and each participant provided written, informed consent per the approved protocol.

Participants

Cross-sectional study. Twenty-eight HIV-1 SN participants aged 19–30 years, nineteen SN participants aged 47–60 years, nine HIV-1 SP participants aged 20–32 years, and ten SP participants aged 39–58 years. All SP participants were within 1–3 years of infection by self-report and were treatment-naïve.

Longitudinal study. From the Multicenter AIDS Cohort Study (MACS), a study of the natural and treated history of HIV-1 infection in men who have sex with men [33,34], we selected ten SP men who initiated ART while enrolled in the MACS. ART is self-reported during the semi-annual MACS study visits. Selection criteria included the following characteristics at the visit prior to initiating ART: an age of 40–50 years, an absolute T-cell count >250 cells/mm³ of blood, a viral load >50 copies/ml (90% of those selected had >5000 copies/ml), and a successful response to treatment, defined by a viral load of <400 RNA copies/ml approximately one year post-ART (90% of those selected had a viral load of <50 RNA copies/ml). The average increase in absolute CD4⁺ T-cell count one year post-ART was 147 cells/mm³. Ten SN MACS participants, age-matched (within 6 months to a year of age) to the pre-ART donor visit, were selected as controls. We analyzed cryopreserved PBMC provided by these men at 6 months to one year prior to ART initiation and at 1 and 2 years after that time.

Immunophenotyping and Cell Sorting

For the cross-sectional study, blood was collected into ethylenediaminetetraacetic acid (EDTA)-treated vacutainer tubes (Becton Dickinson, Rutherford, NJ). Whole blood was stained with the following monoclonal antibodies: CD45RA fluorescein isothiocyanate (FITC), CD4 peridinin chlorophyll protein (PerCPTM), CD31 phycoerytherin (PE) and CD28 and/or CD27 allophycocyanin (APC), (BD Biosciences Immunocytometry Systems (BDIS), San Jose, CA). Whole blood was stained, lysed, and analyzed as described [35]. PBMC for longitudinal analyses were originally collected in heparin and cryopreserved in liquid nitrogen. After thawing, the PBMC were stained as described above and the cells were washed twice in 1 ml of 1X PBS containing 2% newborn calf serum (NCS) and 0.1% sodium azide. To aid in establishing a viable lymphocyte gate for cryopreserved PBMC, an additional tube stained with 7-AAD, a marker for cellular viability [36], was utilized. Samples were analyzed using a FACSCaliburTM flow cytometer (BDIS) equipped with a 15 mW air-cooled 488 nm argon-ion laser and a red diode laser emitting at ~635 nm. For each sample, a minimum of 5,000 CD4⁺ lymphocytes were collected. Analysis of the data was performed with CELLQuestTM software (BDIS).

Cell sorting was performed on a FACSARIA flow cytometer (BDIS). A singlet gate of side scatter height versus side scatter width was used in addition to the standard forward scatter versus side scatter gating, in order to exclude cell “doublets”. PBMC,

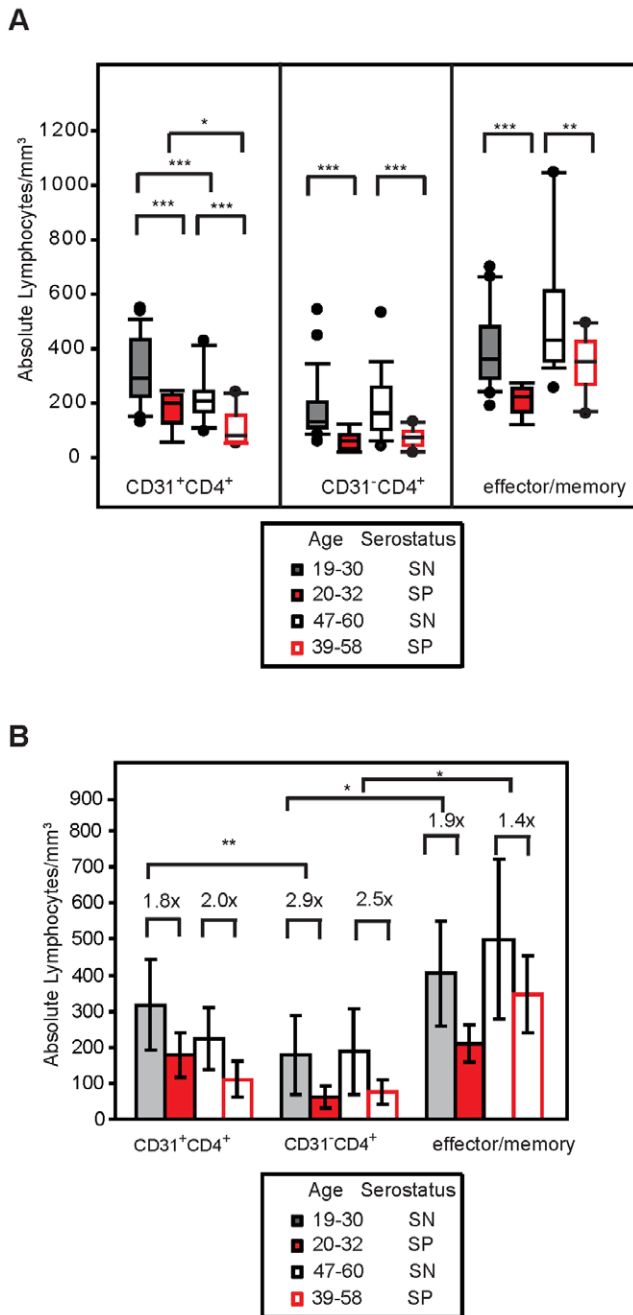


Figure 1. ART-naïve seropositive individuals 1-3 years post-infection have significantly fewer naïve CD4⁺ T-cells than seronegative controls. PBMC from each individual in our cross-sectional study were analyzed for the CD4⁺ naïve T-cell subsets, defined as CD45RA⁺CD27⁺ and either CD31⁺ or CD31⁻, and for the CD4⁺ T-cell effector/memory subset, defined as CD45RA⁻CD27⁺, using flow cytometry. A.) The distribution of the absolute number of naïve and effector/memory CD4⁺ T-cells was determined for each serotype and age group. B.) The average absolute number of cells of each subset was determined for each serotype and age group. For each subset, the fold difference between the seronegative and seropositive age-matched groups is shown above the bars. The asterisks signify the following values, * $p < 0.05$, ** $p < 0.01$, *** $p < 0.005$. doi:10.1371/journal.pone.0016459.g001

demonstrated an average of 139 fewer CD31⁺CD4⁺ T-cells/mm³ than SN age-matched controls (317 cells/mm³ versus 178 cells/mm³, respectively; $p < 0.0002$), and in older SP individuals, HIV-1

was associated with an additional difference of 113 cells/mm³ in this subset beyond what was accounted for by aging alone (223 cells/mm³ versus 110 cells/mm³, respectively; $p = 0.0004$). Since there was no evidence of an interaction between age and HIV-1 infection ($p = 0.6423$), the effect of HIV-1 infection on CD31⁺CD4⁺ T-cell numbers appears to be additive to the effects of aging alone. Notably, the absolute number of CD31⁺ CD4⁺ naïve T-cells in young SP individuals closely matched those of SN participants who were 17 to 28 years their senior (Figure 1A).

HIV-1 infection, but not age, was associated with a significant reduction of CD31⁻CD4⁺ naïve T-cells. While younger SN individuals had an average of 178 cells/mm³ CD31⁻CD4⁺ naïve T-cells, a decrease of 117 cells/mm³ was observed in the younger SP individuals ($p < 0.0002$). However, this effect was independent of age; younger and older SP men had similar absolute cell numbers (61 cells/mm³ and 75 cells/mm³, respectively; interaction $p = 0.9455$). Aging in the absence of HIV-1 infection was not significantly associated with a difference in the number of CD31⁻CD4⁺ naïve T-cells (an average of 178 cells/mm³ and 188 cells/mm³ in the younger and older groups respectively; interaction $p = 0.7476$), consistent with previous reports by our group [27] and others [45], demonstrating that HIV-1 infection is associated with negative effects on this subset that are distinct from aging.

Of note, the decrease in the absolute number of CD31⁻CD4⁺ naïve T-cells associated with HIV-1 infection was greater than the decrease observed for any other CD4⁺ T-cell phenotype tested (Figure 1B). The number of CD31⁻CD4⁺ naïve T-cells was 2.9 times lower in young SP participants than in young SN participants ($p = 0.0070$). This is in contrast to a 1.8- and a 1.9-fold difference in the numbers of CD31⁺CD4⁺ naïve and CD45RA⁻ effector/memory T-cell subsets, respectively, between the same two groups of participants (Figure 1B). There was also a larger difference in CD31⁻CD4⁺ naïve T-cell number between older SN and older SP participants than in the CD31⁺CD4⁺ subset for these two groups, 2.5-fold versus 2.0-fold difference respectively, but it did not reach significance. Whereas the loss of either naïve CD4⁺ T-cell subsets is likely to be detrimental to the host, our previous study has shown that the CD45RA⁺CD31⁻ subset is particularly important for maintaining the naïve CD4⁺ T-cell pool during aging [27].

HIV-1 infection is associated with shortened telomeres within naïve CD4⁺ T-cells

As shown in Figure 2, HIV-1 infection was associated with significant telomere shortening within both subsets of naïve CD4⁺ T-cells across both age groups (younger: $p = 0.0004$ for CD31⁺, $p = 0.0096$ for CD31⁻; older: $p < 0.0002$ for both naïve subsets). In agreement with our previous findings [27], aging was also associated with telomere shortening in both naïve CD4⁺ T-cell subsets, (younger vs. older SN: $p = 0.0132$ for CD31⁺ and $p = 0.0018$ for CD31⁻ subsets; younger vs. older SP: $p = 0.0036$ for CD31⁺ and $p < 0.0002$ for CD31⁻). There was no evidence of an interaction between age and HIV-1 infection in either naïve subset (interaction $p = 0.9564$ for CD31⁺ and $p = 0.5492$ for CD31⁻ CD4⁺ naïve T-cell subsets) indicating that, although age and HIV-1 serostatus each contribute to telomere shortening, these effects appear to be additive.

CD31 expression correlates with TREC number in CD31⁺CD4⁺ naïve T-cells

Due to the challenge of obtaining the quantity of CD31⁺ CD4⁺ naïve T-cells from both older adults and HIV-1-infected

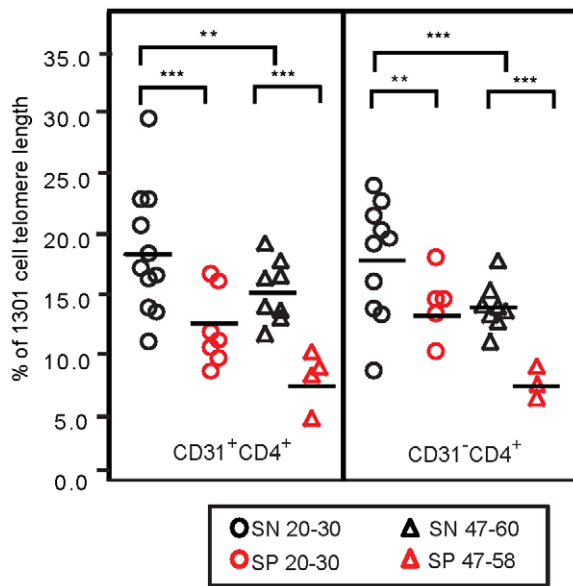


Figure 2. Telomeres are significantly shortened in naïve CD4⁺ T-cells within 1-3 years of HIV-1 infection. PBMC from each individual in the cross-sectional study were sorted into CD31⁺CD4⁺ and CD31⁻CD4⁺ T-cell subsets. The sorted cells were then subjected to telomere length Real-Time PCR. Telomere length values are expressed as a percentage of telomere lengths within a human T-cell leukemia cell line, 1301 cells. Each symbol represents a sample from a single individual within the indicated serostatus and age group. The asterisks signify the following values, * $p \leq 0.05$, ** $p \leq 0.01$, *** $p < 0.005$. doi:10.1371/journal.pone.0016459.g002

individuals required for TREC and telomere analysis, we investigated alternative methods to determine the proliferative history of CD31⁺CD4⁺ naïve T-cells for use in the experiments described below. Based on the observation that CD31 is eventually lost from the surface of CD31⁺ naïve CD4⁺ T-cells [32,46], we investigated whether the relative fluorescence intensity of CD31 on CD31⁺CD4⁺ naïve T-cells was associated with differing levels of TREC content. PBMC from five seronegative participants were sorted into three subsets based on the relative number of CD31 molecules on the surface of the cells: CD31⁺CD4⁺, CD31^{dim}CD4⁺, and total CD31⁺CD4⁺ (Figure 3A). As shown in Figure 3B, the level of CD31 expression was, in fact, strongly associated with TREC number in CD31⁺CD4⁺ naïve T-cells. The CD31⁺CD4⁺ naïve T-cells showed an average of 80% more TREC than were found within total CD31⁺CD4⁺ naïve T-cells, while the CD31^{dim}CD4⁺ naïve T-cell subset showed an average of 60% fewer TREC ($p = 0.0088$). These data suggest that CD31⁺CD4⁺ naïve T-cells, as compared to CD31^{dim}CD4⁺ naïve T-cells, are more highly enriched in RTE that have not undergone proliferation. Thus, relative fluorescence intensity can be used as an indirect measure of proliferative history within RTE in situations where cell numbers are limiting.

Successful ART treatment does not fully reconstitute the CD31⁻CD4⁺ naïve T-cell subset

Since we determined that HIV-1 infection has detrimental effects on the absolute numbers of both naïve CD4⁺ T-cell subsets, we evaluated whether ART was able to restore these subsets to age-appropriate levels. Using the CD31 marker as an indicator of emigration of naïve cells from the thymus, we performed a longitudinal study on cryopreserved PBMC obtained

from MACS participants before, and after, initiation of ART. One year post-ART, the absolute number of CD31⁺CD4⁺ naïve T-cells significantly increased from an average of 60 cells/mm³ to an average of 180 cells/mm³ (Figure 4, $p = 0.0013$). In fact, 2 years post-ART there was no significant difference in cell number between SP men and their SN age-matched controls ($p = 0.4904$).

Since CD31⁺CD4⁺ naïve T-cells appear to be enriched for non-proliferated RTE (Figure 3B), the data in Figure 4 are consistent with previous reports of measurable thymic emigration after only one year of ART [43,47] and continuing after that time. Interestingly, although there was no significant difference between the CD31⁺CD4⁺ naïve T-cell subset and SN controls after 2 years of ART ($p = 0.2670$), the absolute number of CD31⁻CD4⁺ naïve T-cells at the same time point showed no significant increase (Figure 5). The ultimate outcome, therefore, is a significant difference in CD31⁻CD4⁺ T-cell numbers between SP and SN age-matched controls two years post-ART ($p = 0.0022$).

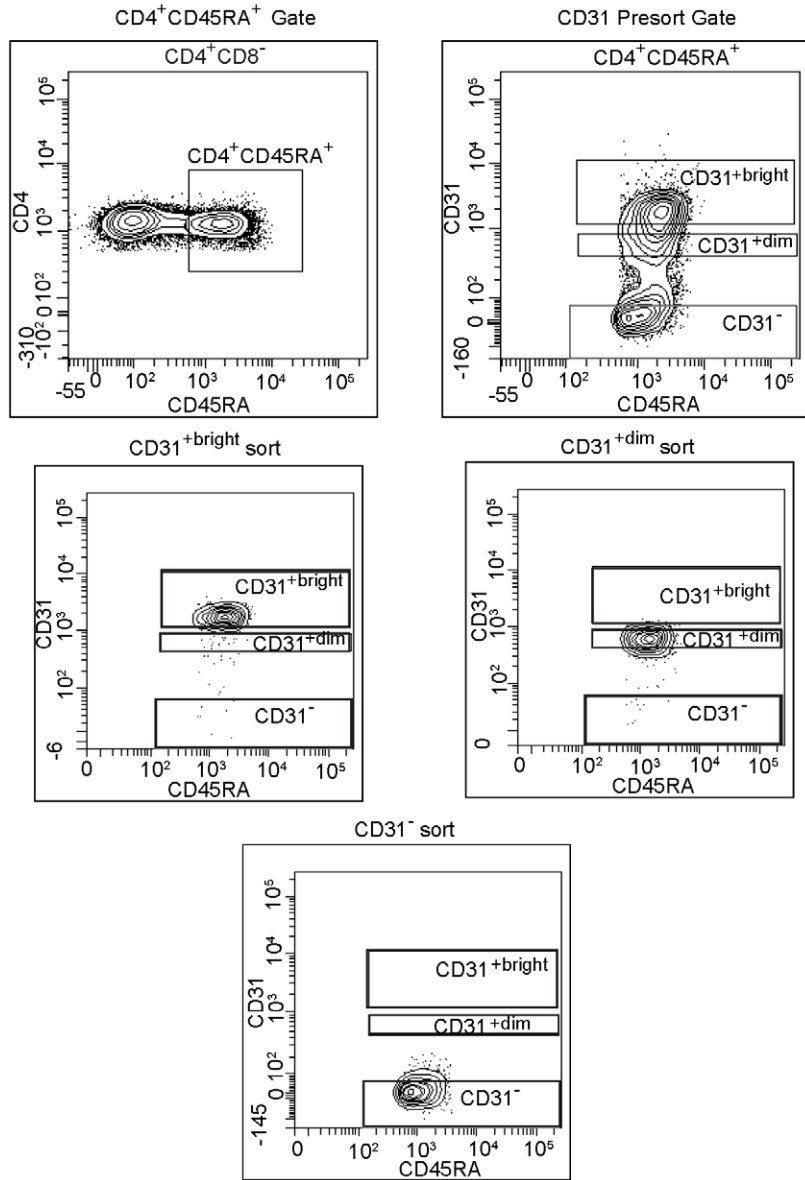
Discussion

Our results demonstrate that the negative effects of HIV-1 infection and aging on naïve CD4⁺ T-cells are predominantly additive. However, HIV-1 infection also exerts a distinct negative effect on CD31⁻CD4⁺ T-cell number that is not seen with aging. Together, these results suggest a role for impaired helper T-cell responses, particularly to neoantigens, in the more rapid progression to AIDS observed in individuals 50 years of age or older.

Older SN individuals demonstrate diminished absolute numbers of CD31⁺CD4⁺ naïve T-cells and shortened telomeres within those subsets [27]. Both of these deficits undoubtedly contribute to the well-documented reduced responses to vaccines and other neoantigens well documented in older adults [29–31]. Indeed, initial HIV-1 infection of older individuals is likely to be met with a diminished CD4⁺ T-cell response, which, in turn, would affect both B- and T-cell responses to HIV-1, allowing the virus to spread quickly. Moreover, our results suggest that once infection is established, the naïve CD4⁺ T-cell compartment is further impaired by an accelerated loss of CD31⁺CD4⁺ naïve T-cells, and a loss of CD31⁻ naïve T-cells that is not normally associated with SN adults in their fifties [27]. Compounding this cell loss is the additive effect of aging and HIV-1 infection on telomere shortening within both subsets of naïve CD4⁺ T-cells (Figure 2). Since telomere length is associated with proliferative capacity, those naïve CD4⁺ T-cells still present after the initial HIV-1 infection would be unlikely to generate, or support, robust CD8⁺ T- and B-cell responses to HIV-1 or opportunistic infections. Not only would HIV-1 be allowed to replicate more rapidly in older adults, but there would also be less CD4⁺ T-cell reserves, due to the reduced numbers of CD4⁺ T-cells and their progeny. These effects would undoubtedly contribute to the more rapid progression to AIDS.

The underlying mechanisms for the accelerated loss of the naïve CD4⁺ T-cells during HIV-1 disease most likely include increased recruitment into the effector/memory pool as well as direct infection with HIV-1 and eventual cell death. The latter is supported by previous reports showing that naïve CD4⁺ T-cells can be infected by HIV-1 [48,49]. Our own unpublished observation that the CD31⁻ naïve subset harbors HIV-1 *in vivo* in ART-naïve individuals (data not shown) may also partially explain why this subset declines in HIV-1-infected, but not age-matched SN, individuals.

A



B

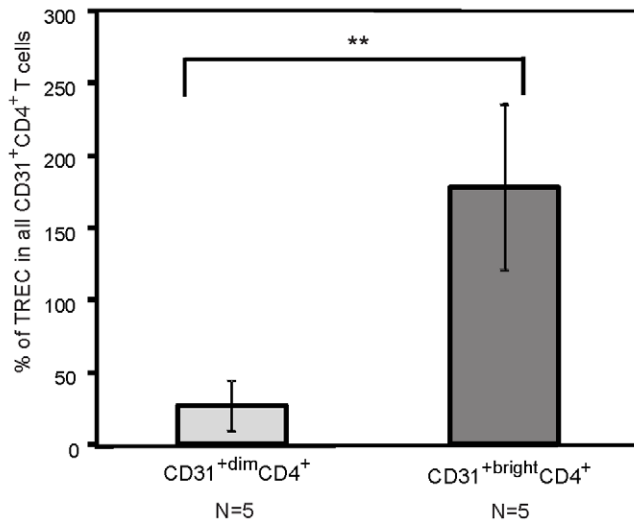


Figure 3. TREC content correlates with levels of CD31 expression on CD31⁺CD4⁺ naïve T-cells. Fresh PBMC from five HIV-1 seronegative individuals, ranging from 25–56 years of age, were sorted into total CD31⁺CD4⁺, CD31⁺^{bright}CD4⁺ and CD31⁺^{dim}CD4⁺ naïve T-cell subsets. A.) Pre-sort gates for determining the CD31⁺^{bright}CD4⁺, CD31⁺^{dim}CD4⁺, and CD31⁺CD4⁺ naïve T-cell subsets are shown. The bottom three plots depict representative post-sort analysis of the subsets. B.) Genomic DNA was extracted from each subset and subjected to quantitative Real-Time PCR to quantify TREC content. The data is expressed as a percentage of TREC number in the indicated subset shown relative to TREC number in total CD31⁺CD4⁺ naïve T-cells. The asterisks signify the following value, ** p=0.009. doi:10.1371/journal.pone.0016459.g003

Loss of the CD31⁺CD4⁺ naïve T-cells subset, and failure of this subset to reconstitute, is likely to have long-term deleterious effects on the immune response to neoantigens in individuals treated with ART. We previously demonstrated that homeostasis of the naïve CD4⁺ T-cell subset in adults is largely maintained by proliferation of CD31⁺CD4⁺ naïve T-cells and not by recent thymic emigrants (CD31⁺CD4⁺ naïve T-cells) [27]. Furthermore, the presence of clonal expansions of naïve CD31⁺CD4⁺ T-cells in HIV-1-infected individuals, similar to those in the effector/memory CD4⁺ T-cell pool, suggest that it is the CD31⁺CD4⁺ T-cells which are recruited into the effector/memory pool in response to antigen (Kilpatrick, et al. unpublished results). Failure of this subset to fully reconstitute in the older SP group within 2 years after ART initiation (Figure 5) suggests that, despite reconstitution of the CD31⁺ naïve CD4⁺ T-cell compartment shown by us and others [50], fewer naïve CD4⁺ T-cells are available for recruitment into the effector/memory pool, as compared to uninfected peers. The lack of reconstitution could be due to a true “block” in differentiation from CD31⁺CD4⁺ to CD31⁺CD4⁺, or by CD31⁺CD4⁺ T-cells being rapidly recruited into the effector/memory pool to fill the “immunologic space”. These two mechanisms would have very different implications for the health of ART-treated individuals and could suggest very different therapeutic strategies for enhancing overall CD4⁺ T-cell reconstitution.

To our knowledge, this is the first study demonstrating shortened telomere lengths in naïve CD4⁺ T-cells sorted from

HIV-1-infected participants and subdivided by the surface markers CD31 and CD27. While these data accord with the majority of studies examining telomere length in total, or effector/memory, CD4⁺ T-cell populations during HIV-1 infection [51–54], they do conflict with the findings of Miedema and colleagues [55]. Using CD45RA and CD45RO to sort naïve and effector/memory cells, Wolthers et al. [55] failed to find evidence of telomere shortening in either CD4⁺ T-cell subset during HIV-1 infection. The difference between the Wolthers et al. results and our own study may be due, at least in part, to a difference in flow cytometry gating strategies. For example, expression of CD45RA is not a stringent phenotype for naïve CD4⁺ T-cells; other cell types, such as terminally differentiated cells would be included in this population. In addition, in contrast to the Wolthers, et al. study, our own HIV-1 infected cohort was age-matched to the SN controls to avoid the confounding effects of aging on the telomere lengths within our HIV-1 infected individuals.

Our observation of telomere shortening in even the least differentiated naïve CD4⁺ T-cells (i.e., the CD31⁺CD4⁺ T-cell subset) in response to both aging and HIV-1 infection (Figure 2) is intriguing and implies possible telomere shortening in an earlier progenitor cell. In support of this hypothesis, both HIV-1 infection and aging have been linked to decreased telomerase activity within hematopoietic progenitors [56–58]. Alternatively, it is possible that extensive cellular proliferation, oxidative stress, or a deficit in

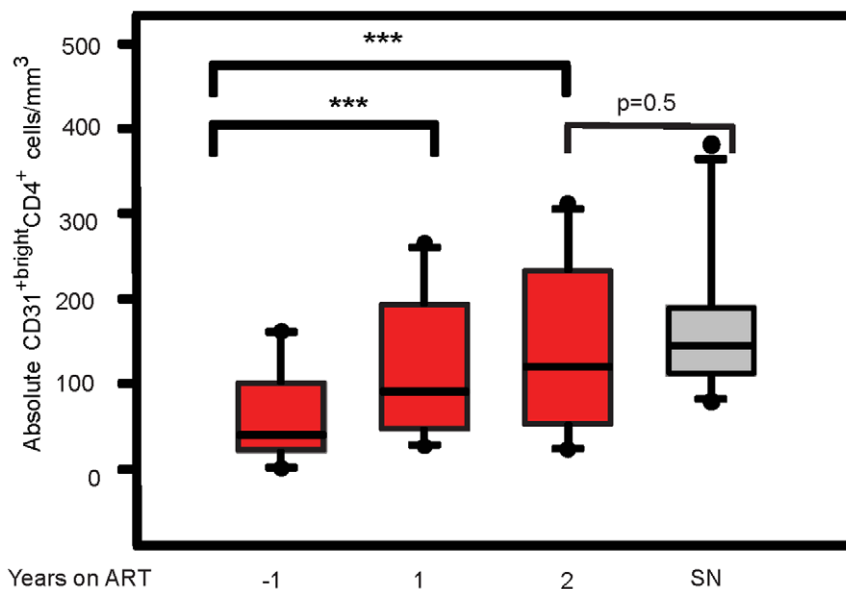


Figure 4. Seropositive individuals two years post-ART have significantly greater numbers of CD31⁺^{bright} cells. Cryopreserved PBMC from ten HIV-1 seropositive MACS participants collected at the indicated times pre- and post-ART were analyzed by flow cytometry for expression of CD4, CD45RA, and CD31. Absolute numbers of CD31⁺^{bright}CD4⁺ naïve T-cells were determined for each participant at the indicated time points. The data is shown in a box plot format where the top and bottom of the box represent the 25th and 75th percentile and middle band represents the 50th percentile. The asterisks signify the following value, *** p<0.005. doi:10.1371/journal.pone.0016459.g004

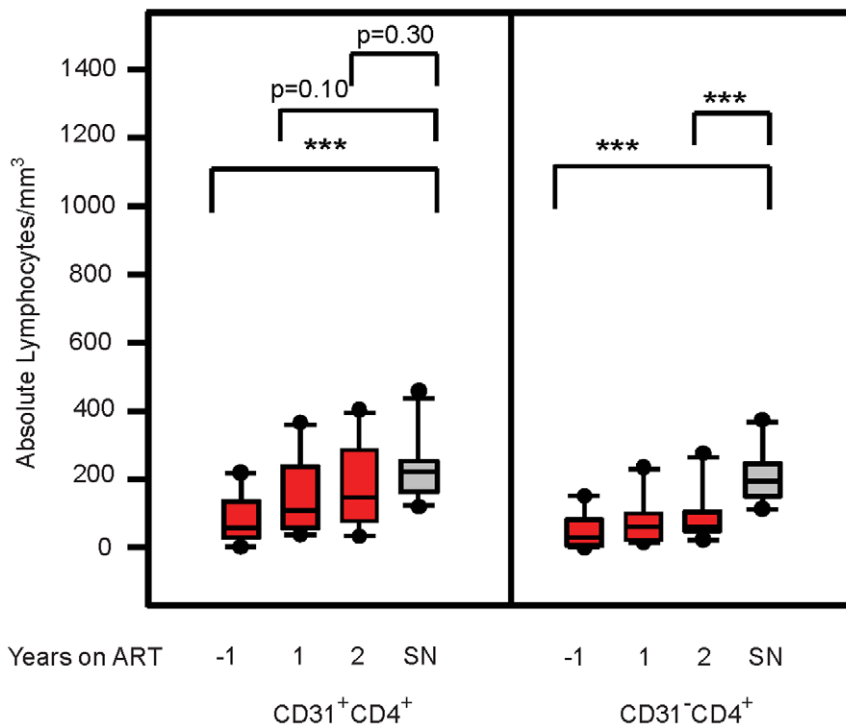


Figure 5. Seropositive individuals demonstrate evidence of post-ART reconstitution in CD31⁺CD4⁺, but not CD31⁻CD4⁺ T-cells. Cryopreserved PBMC from ten seropositive MACS participants collected at the indicated time points pre- and post-ART, were analyzed for the CD31⁺ and CD31⁻ naïve CD4⁺ T-cell subsets by flow cytometry. Cryopreserved PBMC from ten age-matched seronegative participants in the MACS were used as controls. The data is shown in a box plot format where the top and bottom of the box represent the 25th and 75th percentile and middle band represents the 50th percentile. The asterisks signify the following value, *** $p < 0.005$. doi:10.1371/journal.pone.0016459.g005

telomerase directly contributes to telomere shortening within the peripheral CD4⁺ naïve T-cells. Our data do not support a major role for extensive proliferation of the naïve T-cells alone in the telomere shortening. Based on the correlation between TREC levels and CD31 expression (Figure 3B), we performed a cross-sectional analysis of CD31 expression levels on naïve CD31⁺ CD4⁺ T-cells from older vs. younger SN and HIV-1 infected age matched adults, but did not find a diminution of the CD31 relative fluorescence intensity that would be consistent with extensive cellular turnover during aging or HIV-1 infection (data not shown). In addition, in a previous cross-sectional study of the naïve CD4⁺ T-cell compartment during aging, we observed a significant decline in TREC in naïve CD31⁺ T cells over a 1-2 decade period [27]. However, the T-cell expansion was subtle and unlikely to completely account for the significant telomere shortening associated with aging, suggesting that additional factors, possibly oxidative stress, may be involved. Indeed, oxidative stress is associated with chronic inflammation, which is well documented in both HIV-1 infection [59] and aging [60–63] and is known to accelerate telomere shortening in both the presence and absence of proliferation [64,65].

Our results lead us to hypothesize that the additive effects of HIV-1 and aging on the CD31⁺CD4⁺ naïve T-cell subset, and the HIV-1 associated loss of the CD31⁻ naïve CD4⁺ T-cells, contribute to accelerated HIV-1 disease progression in HIV-1-infected adults over the age of 50 [66,67], and to the decreased response to anti-retroviral therapy in older HIV-1-infected adults [68,69]. Moreover, there is accumulating evidence that ART-treated HIV-1-infected individuals clinically present with malignancies

and infectious diseases more consistent with older SN adults [3–5,70,71]. Further elucidation of the mechanisms contributing to naïve CD4⁺ T-cell loss, telomere shortening, and delayed or arrested reconstitution of the CD31⁻ naïve CD4⁺ T-cell subset may lead to the identification of novel therapeutic targets to enhance the immune response against HIV-1 and other pathogens, as well as strategies to retard the formation of neoplasms in ART-treated individuals.

Acknowledgments

We thank all the study participants for their contribution to this work, Charlie Price and Effie Eraklis for their efforts in recruiting our study participants, and Dr. Christel Uittenbogaart and Dr. Catherine Brennan for careful reading of this manuscript and constructive criticism of the work.

The cryopreserved longitudinal samples were obtained from the Multi-Center AIDS Cohort Study (MACS) with centers located at: The Johns Hopkins Bloomberg School of Public Health (Joseph Margolick); Howard Brown Health Center and Northwestern University Medical School (John Phair); University of California, Los Angeles (Roger Detels); University of Pittsburgh (Charles Rinaldo); and Data Analysis Center (Lisa Jacobson and Keri Althoff).

Author Contributions

Conceived and designed the experiments: TMR RDK BDJ. Performed the experiments: TMR LEH PMH MAH. Analyzed the data: CAS RDK. Contributed reagents/materials/analysis tools: JBM CRR RD JP KNA. Wrote the paper: TMR BDJ. Provided intellectual contribution, assisted in data interpretation: RBE.

References

- Mascolini M (2010) What speeds aging with HIV-and what can be done about it? Research Initiative-Treatment Action! 15: 1–59.
- Desquilbet L, Jacobson LP, Fried LP, Phair JP, Jamieson BD, et al. (2007) HIV-1 infection is associated with an earlier occurrence of a phenotype related to frailty. *J Gerontol A Biol Sci Med Sci* 62: 1279–1286.
- Engels EA, Pfeiffer RM, Landgren O, Moore RD (2010) Immunologic and virologic predictors of AIDS-related non-hodgkin lymphoma in the highly active antiretroviral therapy era. *J Acquir Immune Defic Syndr* 54: 78–84.
- D'Souza G, Wiley DJ, Li X, Chmiel JS, Margolick JB, et al. (2008) Incidence and epidemiology of anal cancer in the multicenter AIDS cohort study. *J Acquir Immune Defic Syndr* 48: 491–499.
- Dorrucci M, Suligoi B, Serraino D, Tirelli U, Rezza G (2001) Incidence of invasive cervical cancer in a cohort of HIV-seropositive women before and after the introduction of highly active antiretroviral therapy. *J Acquir Immune Defic Syndr* 26: 377–380.
- Thomas J, Doherty SM (2003) HIV infection—a risk factor for osteoporosis. *J Acquir Immune Defic Syndr* 33: 281–291.
- Fausto A, Bongiovanni M, Cicconi P, Menicagli L, Ligabo EV, et al. (2006) Potential predictive factors of osteoporosis in HIV-positive subjects. *Bone* 38: 893–897.
- Weber R, Sabin CA, Friis-Moller N, Reiss P, El-Sadr WM, et al. (2006) Liver-related deaths in persons infected with the human immunodeficiency virus: the D:A:D study. *Arch Intern Med* 166: 1632–1641.
- Hooshyar D, Hanson DL, Wolfe M, Selik RM, Buskin SE, et al. (2007) Trends in perimortal conditions and mortality rates among HIV-infected patients. *AIDS* 21: 2093–2100.
- Arnold DM, Julian JA, Walker IR (2006) Mortality rates and causes of death among all HIV-positive individuals with hemophilia in Canada over 21 years of follow-up. *Blood* 108: 460–464.
- Lucas GM, Mehta SH, Atta MG, Kirk GD, Galai N, et al. (2007) End-stage renal disease and chronic kidney disease in a cohort of African-American HIV-infected and at-risk HIV-seronegative participants followed between 1988 and 2004. *AIDS* 21: 2435–2443.
- Baker JV, Peng G, Rapkin J, Abrams DI, Silverberg MJ, et al. (2008) CD4+ count and risk of non-AIDS diseases following initial treatment for HIV infection. *AIDS* 22: 841–848.
- Smit C, Geskus R, Walker S, Sabin C, Coutinho R, et al. (2006) Effective therapy has altered the spectrum of cause-specific mortality following HIV seroconversion. *AIDS* 20: 741–749.
- Triant VA, Lee H, Hadigan C, Grinspoon SK (2007) Increased acute myocardial infarction rates and cardiovascular risk factors among patients with human immunodeficiency virus disease. *J Clin Endocrinol Metab* 92: 2506–2512.
- Hsue PY, Deeks SG, Farah HH, Palav S, Ahmed SY, et al. (2008) Role of HIV and human herpesvirus-8 infection in pulmonary arterial hypertension. *AIDS* 22: 825–833.
- The Antiretroviral Therapy Cohort Collaboration (2008) Life expectancy of individuals on combination antiretroviral therapy in high-income countries: a collaborative analysis of 14 cohort studies. *Lancet* 372: 293–299.
- Baker JV, Peng G, Rapkin J, Krasan D, Reilly C, et al. (2008) Poor initial CD4+ recovery with antiretroviral therapy prolongs immune depletion and increases risk for AIDS and non-AIDS diseases. *J Acquir Immune Defic Syndr* 48: 541–546.
- Plaeger-Marshall S, Hultin P, Bertolli J, O'Rourke S, Kobayashi R, et al. (1993) Activation and differentiation antigens on T cells of healthy, at-risk, and HIV-infected children. *J Acquir Immune Defic Syndr* 6: 984–993.
- Rabin RL, Roederer M, Maldonado Y, Petru A, Herzenberg LA, et al. (1995) Altered representation of naïve and memory CD8 T cell subsets in HIV-infected children. *J Clin Invest* 95: 2054–2060.
- Chattopadhyay PK, Douek DC, Gange SJ, Chadwick KR, Hellerstein M, et al. (2006) Longitudinal Assessment of de Novo T Cell Production in Relation to HIV-Associated T Cell Homeostasis Failure. *AIDS Res Hum Retroviruses* 22: 501–507.
- Roederer M, Dubs JG, Anderson MT, Raju PA, Herzenberg LA, et al. (1995) CD8 naïve T cell counts decrease progressively in HIV-infected adults. *J Clin Invest* 95: 2061–2066.
- Kelley CF, Kitchen CM, Hunt PW, Rodriguez B, Hecht FM, et al. (2009) Incomplete peripheral CD4+ cell count restoration in HIV-infected patients receiving long-term antiretroviral treatment. *Clin Infect Dis* 48: 787–794.
- Lange CG, Valdez H, Medvik K, Asaad R, Lederman MM (2002) CD4+ T-lymphocyte nadir and the effect of highly active antiretroviral therapy on phenotypic and functional immune restoration in HIV-1 infection. *Clin Immunol* 102: 154–161.
- Rodriguez B, Valdez H, Lange CG, Asaad R, Medvik K, et al. (2010) In vitro naïve T cell proliferation failure predicts poor post-immunization responses to neoantigen, but not recall antigens, in HIV-infection. *Clin Immunol*.
- Aspinall R, Andrew D (2000) Thymic involution in aging. *J Clin Immunol* 20: 250–256.
- Fulop T, Larbi A, Douziech N, Levesque I, Varin A, et al. (2006) Cytokine receptor signalling and aging. *Mechanisms of Ageing and Development* 127: 526–537.
- Kilpatrick RD, Rickabaugh T, Hultin LE, Hultin P, Hausner MA, et al. (2008) Homeostasis of the naïve CD4+ T cell compartment during aging. *J Immunol* 180: 1499–1507.
- Whisler RL, Newhouse YG, Bagenstose SE (1996) Age-related reductions in the activation of mitogen-activated protein kinases p42mapk/ERK1 and p42mapk/ERK2 in human T cells stimulated via ligation of the T cell receptor complex. *Cell Immunol* 168: 201–210.
- Webster RG (2000) Immunity to influenza in the elderly. *Vaccine* 18: 1686–1689.
- Effros RB (2000) Long-term immunological memory against viruses. *Mech Ageing Dev* 121: 161–171.
- Herndler-Brandstetter D, Cioca DP, Grubeck-Loebenstien B (2006) Immunizations in the elderly: do they live up to their promise? *Wien med Wochenschr* 156: 130–141.
- Kimmig S, Przybylski GK, Schmidt CA, Laurisch K, Mowes B, et al. (2002) Two Subsets of Naïve T Helper Cells with Distinct T Cell Receptor Excision Circle Content in Human Adult Peripheral Blood. *The Journal of Experimental Medicine* 195: 789–794.
- Kaslow RA, Ostrow DG, Detels R, Phair JP, Polk BF, et al. (1987) The Multicenter AIDS Cohort Study: rationale, organization, and selected characteristics of the participants. *Am J Epidemiol* 126: 310–318.
- Detels R, Munoz A, McFarlane G, Kingsley LA, Margolick JB, et al. (1998) Effect of potent antiretroviral therapy on time to AIDS and death in men with known HIV infection duration. *J Am Med Assoc* 230: 1497–1503.
- Hultin L, Hultin P (2006) Flow Cytometry-Based Immunotyping Method and Applications. In: Detrick B, Hamilton R, Folds J, eds. *Manual of Molecular and Clinical Laboratory Immunology*. Washington, D.C.: ASM Press. pp 147–157.
- Schmid I, Krall WJ, Uittenbogaart CH, Braun J, Giorgi JV (1992) Dead cell discrimination with 7-amino-actinomycin D in combination with dual color immunofluorescence in single laser flow cytometry. *Cytometry* 13: 204–208.
- Iyer SB, Bishop JE, Abrams B, Maino VC, Ward AJ, et al. (1997) QuantiBRITE: A new standard for fluorescence quantitation. *BDIS Part No.:* 23-3496 (White Paper).
- Iyer SB, Hultin LE, Zawadzki JA, Davis KA, Giorgi JV (1998) Quantitation of CD38 expression using QuantiBRITE™ beads. *Cytometry* 33: 206–212.
- Cawthon RM (2002) Telomere measurement by quantitative PCR. *Nucleic Acids Res* 30: e47.
- Hultin M, Grönlund E, Norrback K-F, Eriksson-Lindström E, Just T, et al. (1998) Telomere analysis by fluorescence *in situ* hybridization and flow cytometry. *Nucleic Acids Res* 26: 3651–3656.
- Pham T, Belzer M, Church JA, Kitchen C, Wilson CM, et al. (2003) Assessment of Thymic Activity in Human Immunodeficiency Virus-Negative and -Positive Adolescents by Real-Time PCR Quantitation of T-Cell Receptor Rearrangement Excision Circles. *Clinical and Vaccine Immunology* 10: 323–328.
- Jamieson BD, Douek DC, Killian S, Hultin LE, Scripture-Adams DD, et al. (1999) Generation of functional thymocytes in the human adult. *Immunity* 10: 569–575.
- Douek DC, McFarland RD, Keiser PH, Gage EA, Massey JM, et al. (1998) Changes in thymic function with age and during the treatment of HIV infection. *Nature* 396: 690–695.
- Efron B, Tibshirani RJ (1993) *An introduction to the bootstrap*. Chapman and Hall.
- Köhler S, Wagner U, Pierer M, Kimmig S, Oppmann B, et al. (2005) Post-thymic *in vivo* proliferation of naïve CD4+ T cells constrains the TCR repertoire in healthy human adults. *Eur J Immunol* 35: 1987–1994.
- Azevedo RI, Soares MV, Barata JT, Tendeiro R, Serra-Caetano A, et al. (2009) IL-7 sustains CD31 expression in human naïve CD4+ T cells and preferentially expands the CD31+ subset in a PI3K-dependent manner. *Blood* 113: 2999–3007.
- Zhang L, Lewin SR, Markowitz M, Lin HH, Skulsky E, et al. (1999) Measuring recent thymic emigrants in blood of normal and HIV-1-infected individuals before and after effective therapy. *J Exp Med* 190: 725–732.
- Brenchley JM, Hill BJ, Ambrozak DR, Price DA, Guenaga EJ, et al. (2004) T-cell subsets that harbor human immunodeficiency virus (HIV) *in vivo*: implications for HIV pathogenesis. *J Virol* 78: 1160–1168.
- Eckstein DA, Penn ML, Korin YD, Scripture-Adams DD, Zack JA, et al. (2001) HIV-1 actively replicates in naïve CD4+(+) T cells residing within human lymphoid tissues. *Immunity* 15: 671–682.
- Vrisekoop N, van GR, de Boer AB, Otto SA, Borleffs JC, et al. (2008) Restoration of the CD4 T cell compartment after long-term highly active antiretroviral therapy without phenotypical signs of accelerated immunological aging. *J Immunol* 181: 1573–1581.
- Bestilny IJ, Gill MJ, Mody CH, Riabowol KT (2000) Accelerated replicative senescence of the peripheral immune system induced by HIV infection. *AIDS* 14: 771–780.
- Nichols WS, Schneider S, Chan RC, Farthing CF, Daar ES (1999) Increased CD4+ T-lymphocyte senescence fraction in advanced human immunodeficiency virus type 1 infection. *Scand J Immunol* 49: 302–306.
- Pommier JP, Gauthier L, Livartowski J, Galanaud P, Boue F, et al. (1997) Immunosenescence in HIV pathogenesis. *Virology* 231: 148–154.

54. Richardson MW, Sverstiuk A, Hendel H, Cheung TW, Zagury JF, et al. (2000) Analysis of telomere length and thymic output in fast and slow/non-progressors with HIV infection. *Biomed Pharmacother* 54: 21–31.
55. Wolthers KC, Noest AJ, Otto SA, Miedema F, De Boer RJ (1999) Normal telomere lengths in naive and memory CD4⁺ T cells in HIV type 1 infection: a mathematical interpretation. *AIDS Res Hum Retroviruses* 15: 1053–1062.
56. Vignoli M, Stecca B, Furlini G, Re MC, Mantovani V, et al. (1998) Impaired telomerase activity in uninfected haematopoietic progenitors in HIV-1 infected patients. *AIDS* 12: 999–1005.
57. Robertson JD, Gale RE, Wynn RF, Dougal M, Linch DC, et al. (2000) Dynamics of telomere shortening in neutrophils and T lymphocytes during ageing and the relationship to skewed X chromosome inactivation patterns. *British Journal of Haematology* 109: 272–279.
58. Vaziri H, Dragowska W, Allsopp RC, Thomas TE, Harley CB, et al. (1994) Evidence for a mitotic clock in human hematopoietic stem cells: Loss of telomeric DNA with age. *Proc Natl Acad Sci USA* 91: 9857–9860.
59. Appay V, Sauce D (2008) Immune activation and inflammation in HIV-1 infection: causes and consequences. *J Pathol* 214: 231–241.
60. Abbatecola AM, Ferrucci L, Grella R, Bandinelli S, Bonafe M, et al. (2004) Diverse effect of inflammatory markers on insulin resistance and insulin-resistance syndrome in the elderly. *J Am Geriatr Soc* 52: 399–404.
61. Barbieri M, Ferrucci L, Ragno E, Corsi A, Bandinelli S, et al. (2003) Chronic inflammation and the effect of IGF-I on muscle strength and power in older persons. *Am J Physiol Endocrinol Metab* 284: E481–E487.
62. Zanni F, Vescovini R, Biasini C, Fagnoni F, Zanlari L, et al. (2003) Marked increase with age of type 1 cytokines within memory and effector/cytotoxic CD8⁺ T cells in humans: a contribution to understand the relationship between inflammation and immunosenescence. *Exp Gerontol* 38: 981–987.
63. Giunta S (2008) Exploring the complex relations between inflammation and aging (inflamm-aging): anti-inflamm-aging remodelling of inflamm-aging, from robustness to frailty. *Inflamm Res* 57: 558–563.
64. von Zglinicki T (2002) Oxidative stress shortens telomeres. *Trends in Biochemical Sciences* 27: 339–344.
65. Bar-Or D, Thomas GW, Rael LT, Lau EP, Winkler JV (2001) Asp-Ala-His-Lys (DAHK) inhibits copper-induced oxidative DNA double strand breaks and telomere shortening. *Biochem Biophys Res Commun* 282: 356–360.
66. Rosenberg PS, Goedert JJ, Biggar RJ (1994) Effect of age at seroconversion on the natural AIDS incubation distribution. Multicenter Hemophilia Cohort Study and the International Registry of Seroconverters. *AIDS* 8: 803–810.
67. Darby SC, Ewart DW, Giangrande PL, Spooner RJ, Rizza CR (1996) Importance of age at infection with HIV-1 for survival and development of AIDS in UK haemophilia population. UK Haemophilia Centre Directors' Organisation. *Lancet* 347: 1573–1579.
68. Viard JP, Mocroft A, Chiesi A, Kirk O, Roge B, et al. (2001) Influence of age on CD4 cell recovery in human immunodeficiency virus-infected patients receiving highly active antiretroviral therapy: evidence from the EuroSIDA study. *J Infect Dis* 183: 1290–1294.
69. Teixeira L, Valdez H, McCune JM, Koup RA, Badley AD, et al. (2001) Poor CD4 T cell restoration after suppression of HIV-1 replication may reflect lower thymic function. *AIDS* 15: 1749–1756.
70. Deeks SG, Phillips AN (2009) HIV infection, antiretroviral treatment, ageing, and non-AIDS related morbidity. *BMJ* 338: a3172.
71. Piketty C, Selinger-Leneman H, Grabar S, Duvivier C, Bonmarchand M, et al. (2008) Marked increase in the incidence of invasive anal cancer among HIV-infected patients despite treatment with combination antiretroviral therapy. *AIDS* 22: 1203–1211.