

# Determination of 1,7,7-Trimethyl-bicyclo(2,2,1)heptan-2-one in a Cream Pharmaceutical Formulation by Reversed-Phase Liquid Chromatography

G. A. SHABIR\* AND T. K. BRADSHAW

Oxford Brookes University, School of Life Sciences, Oxford, OX3 0BP, UK

Shabir and Bradshaw: Determination of 1,7,7-Trimethyl-bicyclo(2,2,1)heptan-2-one by RP-HPLC

A reversed-phase liquid chromatographic method for the determination of 1,7,7-trimethyl-bicyclo(2,2,1)heptan-2-one in a cream formulation is developed and validated. The separation was achieved using an isocratic mobile phase, on a Lichrosorb C8 column. The calibration curve is linear ( $r^2 = 0.9999$ ) from 25-175% of the analytical concentration of 1.0 mg/ml. The mean percent standard deviation values for intra-day and inter-day precision studies were <1%. The recovery ranges 99.80-100.06% from a cream formulation. The method can be used reliably in quality control for the analysis of bulk cream samples and final product release.

**Key words:** Method validation, pharmaceutical cream formulation, reversed-phase liquid chromatography, 1,7,7-trimethyl-bicyclo(2,2,1)heptan-2-one

1,7,7-Trimethyl-bicyclo(2,2,1)heptan-2-one (TMBH, fig. 1) is used for its scent, as an embalming fluid and in antiseptic creams as the active ingredient. It is a white transparent waxy crystalline solid with a strong penetrating pungent aromatic odor<sup>[1]</sup>. It is found in the wood of the TMBH laurel,

*Cinnamonum camphora*, which is a large evergreen tree found in Asia (particularly in Borneo, hence its alternate name); it can also be synthetically produced from oil of turpentine. TMBH is readily absorbed through the skin and produces a feeling of cooling and acts as a slight local anesthetic and antimicrobial agent. Recently, carbon nanotubes were successfully synthesized using TMBH in chemical vapor deposition process<sup>[2]</sup>. In larger quantities,

---

\*Address for correspondence

E-mail: gshabir.oxford@yahoo.com

it is poisonous when ingested and can cause seizures, confusion, irritability, and neuromuscular hyperactivity. Despite the rather low skin absorption it may still lead to hepatotoxicity in extreme cases<sup>[3,4]</sup>. In 1980, the United States Food and Drug Administration (FDA) set a limit of 11% allowable camphor in consumer products and totally banned products labeled as camphorated oil, camphor oil, camphor liniment, and camphorated liniment (except "white camphor essential oil", which contains no significant amount of camphor). Since alternative treatments exist, medicinal use of TMBH is discouraged by the FDA, except for skin-related uses, such as medicated powders, which contain only small amounts of TMBH. Various analytical procedures for analysis of TMBH with the combination of other compounds including *m*-cresols<sup>[5]</sup>, menthol<sup>[6]</sup> and mixtures of TMBH, menthol, and methyl salicylate in ointments<sup>[7]</sup> using gas chromatography have been reported in the literature. In this work for the first time, a simple, rapid, specific and sensitive Reversed-Phase Liquid Chromatography (RPLC) novel assay method for the determination of TMBH in a pharmaceutical cream formulation is reported. Frequently, RPLC is the analytical method of choice in pharmaceutical analysis because of its specificity (i.e. all the components of a sample are separated from one another before the measurement is made so that its results arise from the analyte and from nothing else). Finally, the developed analytical method was validated to assess the validity of research data means determining whether the method used during the study can be trusted to provide a genuine, account of the intervention being evaluated. As a best practice<sup>[8-12]</sup> in the subsequent investigation,

the new RPLC method was validated<sup>[13]</sup> using pre-approved protocol and a validated LC system.

Methanol (HPLC-grade), 1,7,7-trimethyl-bicyclo(2,2,1)heptan-2-one (96% pure), ammonium formate, and ammonium acetate were obtained from Sigma-Aldrich (Gillingham, UK). Acetic acid (analytical grade) was purchased from BDH (Lutterworth, UK). Distilled water was de-ionised by using a Milli-Q system (Millipore, Bedford, MA).

A Knauer HPLC system (Berlin, Germany), consisting of a vacuum degasser, a Knauer 1000 solvent pump, Knauer 3950 autosampler and a Knauer photodiode-array (PDA) detector 2600, all controlled by a ClarityChrom software, was used. A reversed phase Lichrosorb C8 column (150×4.6 mm, 5 μm particle size) (Jones Chromatography, UK) was used for separation. The mobile phase comprised of a (65:35, v/v) mixture of methanol-water containing 0.1% analytical grade acetic acid (v/v) was used. The flow rate was 1 ml/min, the injection volume was 20 μl, and the temperature was set at 30±0.5°.

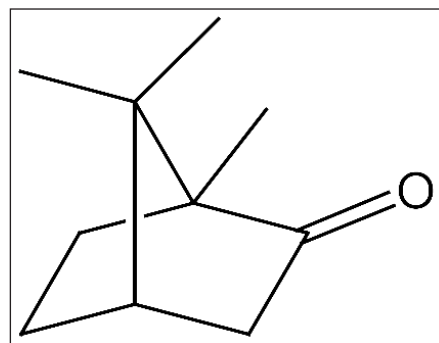


Fig. 1: Structure of 1,7,7-trimethyl-bicyclo(2,2,1)heptan-2-one (TMBH).

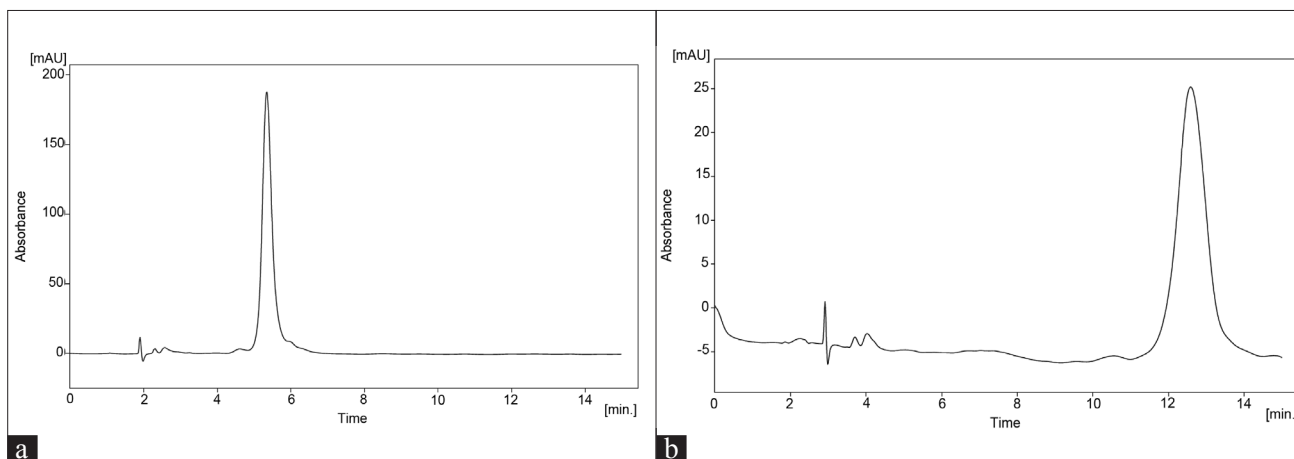


Fig 2: LC chromatogram of TMBH

(a) chromatogram obtained using a Hypersil C18 column. (b) chromatogram obtained using HyperClone C18 column.

TMBH (2.5 g) was accurately weighed and added to a 100 ml volumetric flask before being dissolved in methanol (stock). A 4.0 ml aliquot of stock solution was diluted to 100 ml in mobile phase, yielding a final concentration of 1.0 mg/ml. Standard solutions for the evaluation of TMBH linearity were prepared over a concentration range of 0.25-1.75 mg/ml, to 25, 50, 75, 100, 125, 150, and 175%, in the mobile phase.

An accurately weighed amount (10 g) of sample cream into a 150 ml stopper quick fit flat bottomed flask and 36 ml methanol and 1.0 ml acetic acid were added. The flask was heated on a boiling water bath until the sample cream melted. The solution was then cooled to room temperature. Forty milliliter of de-ionized water was added to the flask. Amount equivalent to 100 mg TMBH from pharmaceutical formulation was transferred to 100 ml volumetric flask and 30 ml mobile phase was added, yielding a final concentration of 1.0 mg/ml. The flask was shaken mechanically for 10 min and the solution was then diluted to volume with mobile phase. The sample was filtered through a sample filtration unit (0.45  $\mu\text{m}$ ) and injected into the LC system.

Acetic acid in water, ammonium formate, and ammonium acetate buffers were studied as potential mobile phases but acetic acid was selected because it gave a shorter analysis time and better separation was obtained with the addition of methanol. Initially, three analytical columns were tried in order to reach an acceptable specificity and selectivity for camphor compound. We first exploited Hypersil C18 (250 $\times$ 4.60 mm, 5  $\mu\text{m}$ ) and HyperClone C18 (250 $\times$ 4.60 mm, 5 $\mu\text{m}$ ) phase columns from Phenomenex (Macclesfield, UK). The Hypersil column gave poor separation

of camphor peak with retention time of 5.35 min (fig. 2a). The Hyperclone column also gave a poor peak shape with tailed badly and was longer retention time 12.58 min (fig. 2b) for the analyte peak. Shift to the Lichrosorb C8 (150 $\times$ 4.6 mm, 5  $\mu\text{m}$ ), column (Jones Chromatography, Hengoed, UK) produced a peak with superior band shape and a column efficiency with shorter retention time (5.97 min) under the same conditions (fig. 3a). The temperature was set at 30 $\pm$ 0.5 $^\circ$ . The choice of wavelength is essential to accomplish a sensitive chromatographic assay. The optimal wavelength for TMBH detection was established using the scan range of 200 to 400 nm. It was established that 289 nm was the optimal wavelength to maximize the signal. System suitability testing was performed by injecting six replicate injections of a solution containing 1 mg TMBH/ml. The percent relative standard deviation (RSD) of the peak area responses was measured, giving an average of 0.11 ( $n=6$ ). The tailing factor ( $T$ ) for each TMBH peak was 1.071, the theoretical plate number ( $N$ ) was 5615, and the retention time ( $t_r$ ) variation %RSD was < 1% for six injections. The RPLC method met these requirements within the accepted limits<sup>[14]</sup>. For the determination of method robustness within a laboratory during method development a number of chromatographic parameters were determined, which included flow rate, temperature, mobile phase composition, and columns from different lots, In all cases good separation of TMBH were always achieved, indicating that the method remained selective for TMBH component under the tested conditions.

Samples and standard solutions were chromatographed immediately after preparation and then reassayed after storage at room temperature for 48h. The results

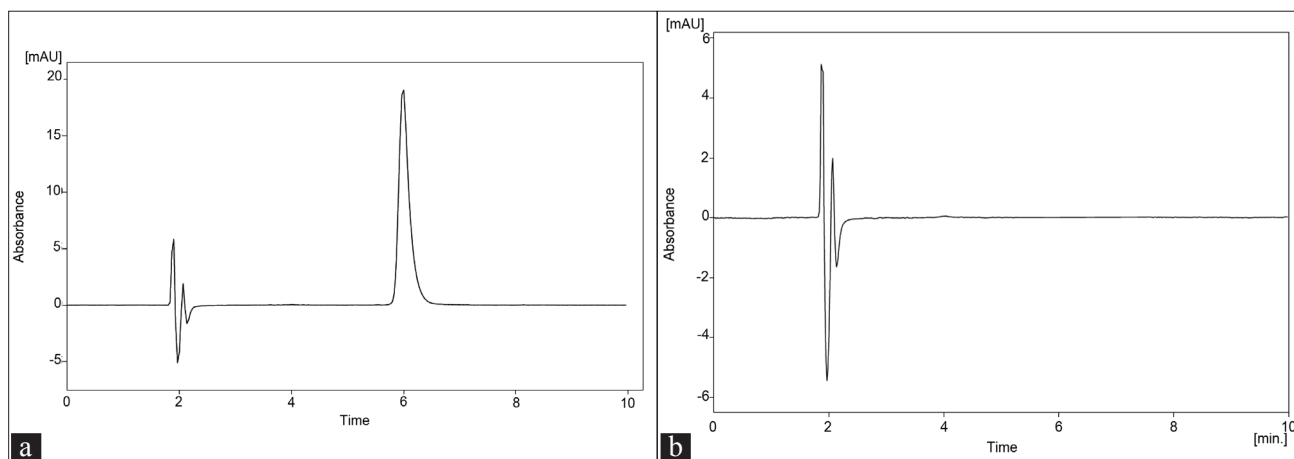


Fig. 3: LC chromatogram of TMBH.

(a) chromatogram obtained using Lichrosorb C8 column, (b) chromatogram of placebo

given in (Table 1) show that there was no significant change (<1% response factor) in TMBH concentration over this period.

Linearity was studied using seven solutions in the concentration range 0.25-1.75 mg/ml, 25-175% around the theoretical value (1.0 mg/ml). Solutions corresponding to each concentration level were injected in triplicate and linear regression analysis of the TMBH peak area ( $y$ ) versus TMBH concentration ( $x$ ) was calculated. The correlation coefficient ( $r^2 = 0.9999$ ) obtained for the regression line demonstrates that there is a strong linear relationship between peak area and concentration of TMBH (Table 1).

Precision of the method was investigated with respect to repeatability (intra-day precision) and intermediate precision (inter-day variation). Repeatability of the method was evaluated by assaying six replicate injections of the TMBH at 100% of test concentration (1.0 mg/ml). The %RSD of the retention time (min) and relative percent peak area were found to be less than 0.17% (Table 1). Intermediate precision (inter-day variation) was demonstrated by two analysts using two LC systems and evaluating the relative peak area percent data across the two LC systems at three concentration levels (50, 100, and 125%) that cover the assay method range (0.25-1.75 mg/ml). The mean and %RSD across the systems and analysts were calculated from the individual relative percent peak area mean

**TABLE 1: METHOD VALIDATION RESULTS**

Validation step	Parameters	Concentration (mg/ml)	Results	Acceptance criteria
Standard stability	% change in response factor	1.0	0.12	$X < 2$
Sample stability	% change in response factor	1.0	0.14	$X < 2$
Linearity <sup>1</sup>	Correlation coefficient ( $r^2$ )	0.25-1.75	$y = 725.18x - 91.577$ ( $r^2 = 0.9999$ )	$r^2 \geq 0.999$
Repeatability <sup>2</sup>	$tR$ (min) %RSD	1.0	0.04	$X < 2$
	Peak area %RSD		0.16	$X < 2$
Intermediate precision <sup>3</sup>	Instrument %RSD	1.0	0.26	$X < 2$
	Analyst %RSD		0.18	$X < 2$

<sup>1</sup> $k = 6$ ,  $n = 3$ , <sup>2</sup> $n = 6$ , <sup>3</sup> $n = 3$ .

**TABLE 2: RECOVERY STUDIES OF TMBH FROM SAMPLE WITH KNOWN CONCENTRATION**

Sample #	Percent of nominal	Amount of analyte (mg)		Recovery (% , $n = 3$ )	RSD (% , $n = 3$ )
		Added	Recovered		
1	75	0.75	0.7502	100.02	0.12
2	100	1.0	0.998	99.80	0.17
3	150	1.50	1.501	100.06	0.14
Mean				99.96	

**TABLE 3: RESULTS OF THE STRESS CONDITIONS EXPERIMENTS**

Stress conditions	Sample treatment	$tR$ (min)	Area (mAU s)	Assay (%)
Reference standard	Fresh solution	6.400	7921	99.98
Acid degradation	1M HCl at 80° for 4h	6.398	7916	99.86
Base degradation	1M NaOH at 80° for 4h	6.397	7922	99.77
Oxidative degradation	3% H <sub>2</sub> O <sub>2</sub> for 24h	6.400	7911	99.68

**TABLE 4: ROBUSTNESS DATA OF RPLC METHOD**

Parameter	Modification	$tR$ (min)	T	N	RSD (%)*
Mobile phase (Methanol, $\pm 5\%$ )	60%	6.405	1.018	5612	0.16
	65%	6.400	1.018	5687	0.11
	70%	6.398	1.015	5567	0.13
Flow rate ( $\pm 0.2$ , ml/min)	0.8	6.408	1.018	5689	0.11
	1.0	6.400	1.018	5685	0.16
	1.2	6.397	1.018	5681	0.11
Temperature ( $\pm 5^\circ$ )	25	6.400	1.018	5688	0.14
	30	6.400	1.019	5687	0.12
	35	6.399	1.018	5653	0.13

\* Peak area ( $n = 5$ )

values at the 50%, 100%, and 125% of the test concentration. The %RSD values for both instruments and analysts were 0.26% (Table 1) and illustrated good precision of RPLC method.

The accuracy of the method was evaluated by adding known quantities of TMBH in the cream formulation samples to give a range of TMBH concentration of 75-150% ( $n=3$ ) of that in a test preparation. These solutions were analyzed and the amount of analyte recovered calculated. The recovery data expressed as an average percent of triplicate injections are presented in (Table 2) and show good recovery of TMBH.

Injections of the extracted placebo were performed to demonstrate the absence of interference with the elution of the TMBH. These results demonstrate (fig. 3b) that there was no interference from the other materials in the cream formulation and, therefore confirm the specificity of the RPLC method. The forced degradation studies were also applied to TMBH reference standard at a concentration of 1 mg/ml to verify that none of the degradation products interfered with quantitation of the drug. Hydrolytic degradation was studied by heating the drug under reflux at 80° in 0.1M hydrochloric acid and 0.1M sodium hydroxide for 4 h. The samples were then cooled to room temperature and neutralized. Oxidative degradation was studied by treating the drug with 3% hydrogen peroxide at room temperature (22±1°) for 4 h. Solutions containing 1 mg/ml of each degraded samples were prepared and injected in triplicate. No significant degradation was observed under any stress conditions studied (Table 3).

The limit of detection (LOD) and limit of quantitation (LOQ) of TMBH was determined based on standard deviation ( $\sigma$ ) of response and slope ( $s$ )<sup>[13]</sup>. TMBH solutions were prepared in the range 5-250 µg/ml and injected in triplicate. Average peak area of analyte was plotted against concentration. LOD and LOQ were calculated by using the following equations:  $LOD = (3.3 \sigma)/s$  and  $LOQ = (10 \sigma)/s$ . The LOD was determined to be 8.4 µg/ml and LOQ was found to be 76 µg/ml for TMBH with %RSD less than 0.16% for six replicate injections.

To determine the robustness of method, the final experimental conditions were purposely altered and the results were examined. The flow rate was varied by 1±0.2 ml/min. the percentage of organic modifier

was varied by 65±5% and temperature was varied by 30±5°. Their effects on the retention time ( $t_R$ ), tailing factor ( $T$ ), theoretical plate numbers ( $N$ ) and repeatability of peak areas ( $n=3$ ) were studied. It can be seen that every employed condition, the chromatographic parameters are in accordance with established value<sup>[14,15]</sup>. A change of mobile phase composition, flow rate and temperature had no impact on chromatographic performance. The tailing factor for TMBH peak was found to be less than 1.2 and analyte was well separated under all the changes carried out (Table 4). Considering the result of modifications in the system suitability parameters and the specificity of the method, it would be concluded that the method conditions are robust.

A reversed-phase liquid chromatographic method with UV spectrophotometric detection was developed for the determination of TMBH in pharmaceutical cream formulation. The method was validated and the results obtained were accurate and precise with  $RSD < 1\%$  in all cases and no significant interfering peaks were detected. The method is specific, simple, selective, robust and reliable for routine use in quality control for analysis of TMBH in bulk samples, raw materials, and final cream product pharmaceutical formulations.

## ACKNOWLEDGEMENTS

We thank Dr. Simon Giles (School of Life Sciences, Oxford Brookes University) for providing materials for the research work.

## REFERENCES

1. Mann C, Hobbs JB, Banthorpe DV, Harborne JB. Natural products: Their chemistry and biological significance. Harlow, Essex, England: Longman Scientific and Technical; 1994. p. 309-11.
2. Kumar M, Ando Y. Carbon nanotubes from camphor: An environment-friendly nanotechnology. J Phys Conf Ser 2007;61:643-6.
3. Martin D, Valdez J, Boren J, Mayersohn M. Dermal absorption of camphor, menthol, and methyl salicylate in humans. J Clin Pharmacol 2004;44:1151-7.
4. Uc A, Bishop WP, Sanders KD. Camphor hepatotoxicity. South Med J 2000;93:596-8.
5. Mirza T, Tan SIH. Capillary gas chromatographic assay of camphor and m-cresol in dermatological creams. J Pharm Biomed Anal 1998;17:1427-38.
6. Karuza LJ, Folivarski K. Validation of the assay method for camphor and menthol in a herbal drug preparation. J Pharm Biomed Anal 1996;15:419-22.
7. Henry SIT, Patricia AK, Petra EP. Gas-liquid chromatographic assay of mixtures of camphor, menthol, and methyl salicylate in ointments, J Chromatogr A 1982;238:241-6.
8. Shabir GA, Lough WJ, Shafique AA, Bradshaw TK. Evaluation and application of best practice in analytical method validation. J Liq

- Chromatogr Rel Technol 2007;30:311-33.
9. Shabir GA. Validation of HPLC methods for pharmaceutical analysis: Understanding the differences and similarities between validation requirements of the US Food and Drug Administration, the U.S. Pharmacopoeia and the International Conference on Harmonization. J Chromatogr A 2003;987:57-66.
  10. Shabir GA. Step-by-step analytical methods and protocol in the quality system compliance industry. J Validation Technol 2004;10:314-24.
  11. Shabir GA. A practical approach to validation of HPLC methods under current good manufacturing practices. J Validation Technol 2004;10:210-8.
  12. Shabir GA. HPLC method development and validation for pharmaceutical analysis. Pharma Technol Eur 2004;16:37-49.
  13. International Conference on Harmonization (ICH). Validation of analytical procedures: Text and Methodology, Q2(R1), Geneva, Switzerland, Nov 2005.
  14. U.S. Pharmacopeia 32, Chromatography, General Chapter (621). Rockville, MD, USA: United States Pharmacopeal Convention; 2009. p. 1776.
  15. Reviewer Guidance: Validation of Chromatographic Methods, Food and Drug Administration (FDA). United States: Center for Drug Evaluation and Research (CDER); 1994.

**Accepted 18 November 2010**

**Revised 28 August 2010**

**Received 18 January 2010**

**Indian J. Pharm. Sci., 2010, 72 (6): 809-814**