

Erratum: MD2 blockage prevents the migration and invasion of hepatocellular carcinoma cells via inhibition of the EGFR signaling pathway

Editorial Office

Journal of Gastrointestinal Oncology

Correspondence to: Editorial Office, Journal of Gastrointestinal Oncology. Email: jgo@amepc.org.

Submitted Jan 03, 2025. Accepted for publication Jan 11, 2025. Published online Feb 26, 2025.

doi: 10.21037/jgo-2025b-02

View this article at: <https://dx.doi.org/10.21037/jgo-2025b-02>

Erratum to: J Gastrointest Oncol 2021;12:1873-83.

In the article that appeared on page 1877 and 1879, Vol 12, No 4 (August 30, 2021) issue of the *Journal of Gastrointestinal Oncology* (JGO) (1), there were some errors in *Figure 2B* and *Figure 4C*.

In *Figure 2B*, an incorrect GAPDH panel from a different dataset was included. And the authors inadvertently miscut a GAPDH panel in *Figure 4C*.

The corrected *Figure 2* and *Figure 4* are listed below.

Corrected *Figure 2*:

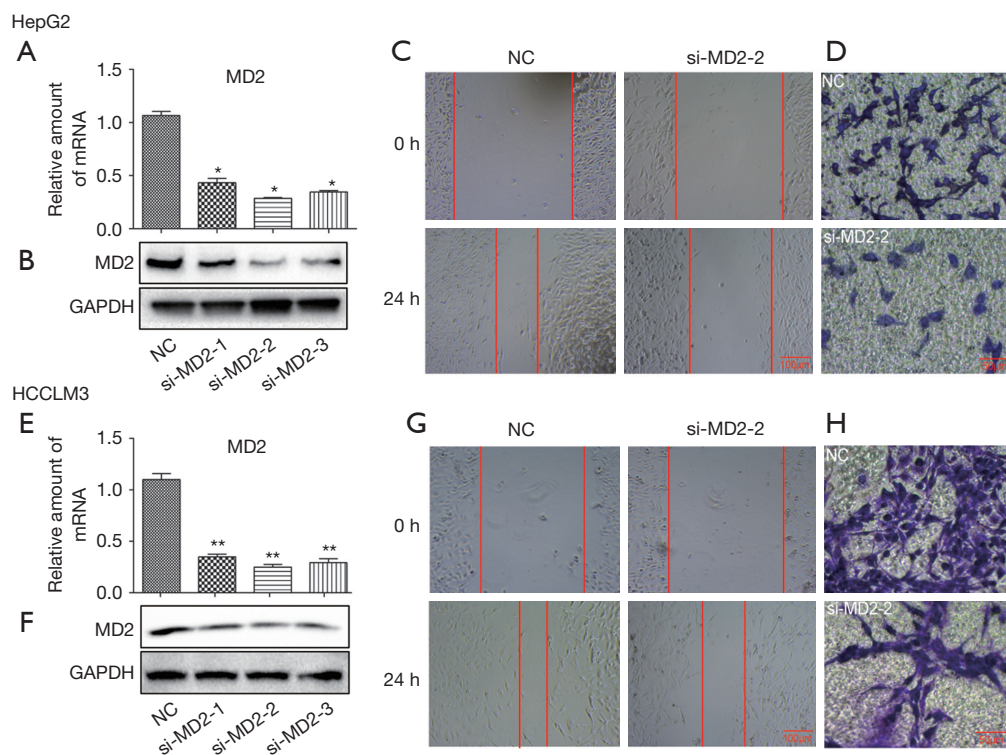


Figure 2 Silencing of MD2 inhibited cell migration and invasion.

Corrected *Figure 4*:

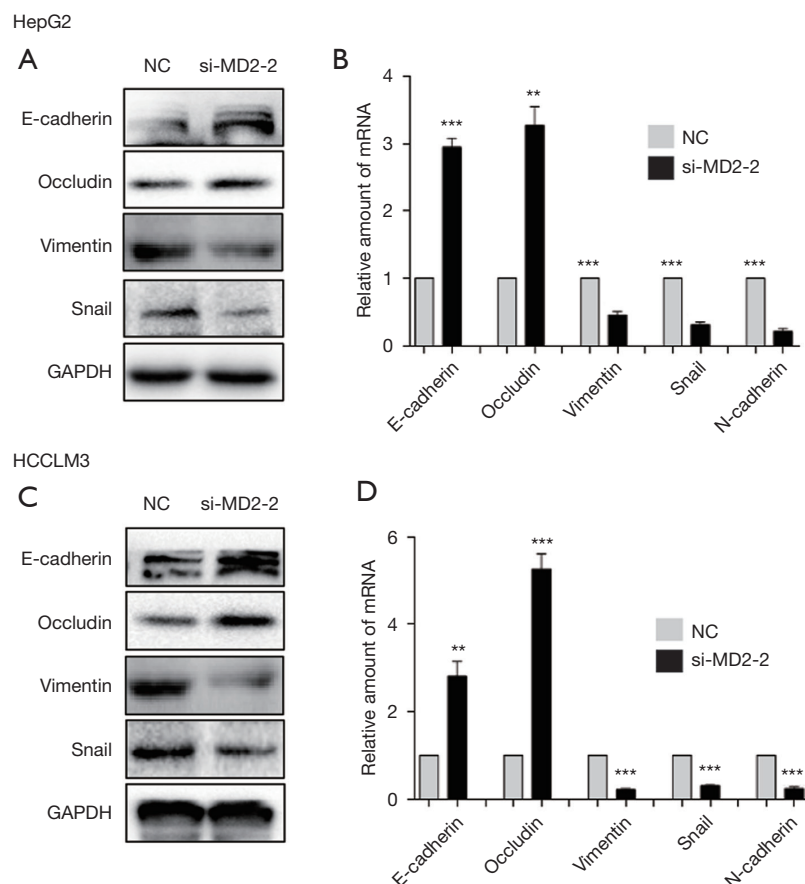


Figure 4 Silencing of MD2 inhibited cell EMT.

The authors sincerely apologize for these errors and affirm that the correction does not compromise the validity of the conclusions presented in the article.

Click [here](#) to view the updated version of the article.

Open Access Statement: This is an Open Access article distributed in accordance with the Creative Commons Attribution-NonCommercial-NoDerivs 4.0 International License (CC BY-NC-ND 4.0), which permits the non-commercial replication and distribution of the article with the strict proviso that no changes or edits are made and the original work is properly cited (including links to both the formal publication through the relevant DOI and the license). See: <https://creativecommons.org/licenses/by-nc-nd/4.0/>.

References

1. Qi Y, Fang Q, Li Q, et al. MD2 blockage prevents the migration and invasion of hepatocellular carcinoma cells via inhibition of the EGFR signaling pathway. *J Gastrointest Oncol* 2021;12:1873-83.

Cite this article as: Editorial Office. Erratum: MD2 blockage prevents the migration and invasion of hepatocellular carcinoma cells via inhibition of the EGFR signaling pathway. *J Gastrointest Oncol* 2025;16(1):333-335. doi: 10.21037/jgo-2025b-02