

REVIEW ARTICLE

Open Access

The effects of different dietary fiber pectin structures on the gastrointestinal immune barrier: impact via gut microbiota and direct effects on immune cells

Martin Beukema¹, Marijke M. Faas¹ and Paul de Vos¹

Abstract

Pectins are dietary fibers with different structural characteristics. Specific pectin structures can influence the gastrointestinal immune barrier by directly interacting with immune cells or by impacting the intestinal microbiota. The impact of pectin strongly depends on the specific structural characteristics of pectin; for example, the degree of methyl-esterification, acetylation and rhamnogalacturonan I or rhamnogalacturonan II neutral side chains. Here, we review the interactions of specific pectin structures with the gastrointestinal immune barrier. The effects of pectin include strengthening the mucus layer, enhancing epithelial integrity, and activating or inhibiting dendritic cell and macrophage responses. The direct interaction of pectins with the gastrointestinal immune barrier may be governed through pattern recognition receptors, such as Toll-like receptors 2 and 4 or Galectin-3. In addition, specific pectins can stimulate the diversity and abundance of beneficial microbial communities. Furthermore, the gastrointestinal immune barrier may be enhanced by short-chain fatty acids. Moreover, pectins can enhance the intestinal immune barrier by favoring the adhesion of commensal bacteria and inhibiting the adhesion of pathogens to epithelial cells. Current data illustrate that pectin may be a powerful dietary fiber to manage and prevent several inflammatory conditions, but additional human studies with pectin molecules with well-defined structures are urgently needed.

Introduction

Dietary fibers play an important role in the maintenance of health¹. Several meta-analyses have illustrated that higher dietary fiber intake is correlated with a reduced incidence of disease and mortality^{1–3}. These findings are corroborated by other studies showing that reduced dietary fiber intake is correlated with a higher incidence of Western diseases with anomalies in immunity^{4,5}, indicating that dietary fiber plays an important role in immune homeostasis. One mechanism by which fibers may protect against the development of disease is by preserving the gastrointestinal immune barrier. The

gastrointestinal immune barrier is the gatekeeper of the human body. It is composed of a mucus layer and a layer of epithelial cells and prevents luminal molecules from entering the underlying lamina propria containing immune cells^{6,7}. Intestinal barrier dysfunction may result in immune disorders such as autoimmune and inflammatory diseases, including Crohn's disease and ulcerative colitis^{8,9}. Improving intestinal barrier function by increasing dietary fiber consumption may therefore be an effective strategy to prevent or delay Western immune-related diseases¹⁰.

Before dietary fibers are degraded by microbial enzymes in the colon, they may interact directly with the cells of the immune barrier in the small intestine¹¹. The small intestine contains a thin and loose mucus layer¹² that not only facilitates nutrient uptake but also allows dietary

Correspondence: Martin Beukema (m.beukema@umcg.nl)

¹Immunoenocrinology, Division of Medical Biology, Department of Pathology and Medical Biology, University Medical Centre Groningen, Hanzeplein 1, 9713 GZ Groningen, The Netherlands

© The Author(s) 2020



Open Access This article is licensed under a Creative Commons Attribution 4.0 International License, which permits use, sharing, adaptation, distribution and reproduction in any medium or format, as long as you give appropriate credit to the original author(s) and the source, provide a link to the Creative Commons license, and indicate if changes were made. The images or other third party material in this article are included in the article's Creative Commons license, unless indicated otherwise in a credit line to the material. If material is not included in the article's Creative Commons license and your intended use is not permitted by statutory regulation or exceeds the permitted use, you will need to obtain permission directly from the copyright holder. To view a copy of this license, visit <http://creativecommons.org/licenses/by/4.0/>.

molecules such as fibers to interact with the intestinal epithelial and immune cells directly¹¹. The consequences of these direct interactions with cells of the intestinal immune barrier include strengthening of the mucus layer¹³, enhancing barrier function of epithelial cells¹⁴ or modulating intestinal immune responses¹⁵. This direct interaction between dietary fibers and the intestinal immune system may be one of the mechanisms by which dietary fibers improve health and prevent disease¹⁶.

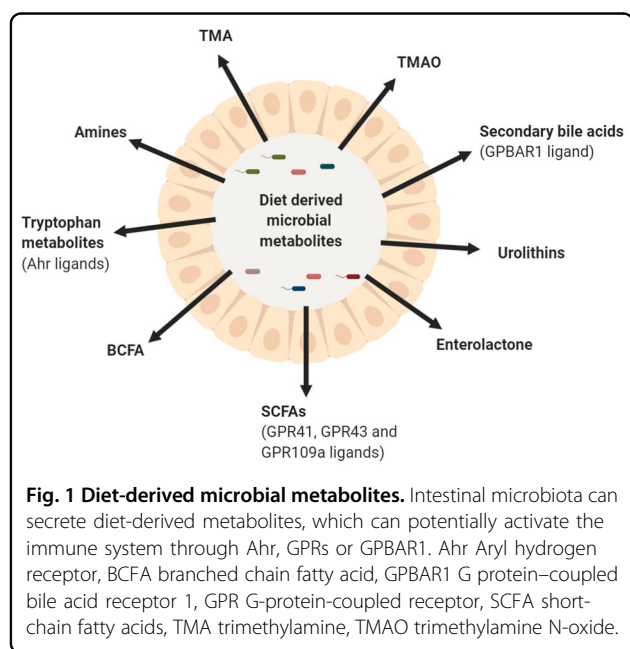
Dietary fibers can also have indirect beneficial effects on the gastrointestinal immune barrier through stimulation of the growth of intestinal microbiota communities and their metabolic activities¹⁷. Dietary fibers cannot be digested by human enzymes and are subject to fermentation by the intestinal microbiota mainly in the colon¹⁸. Some dietary fibers stimulate the growth of specific microbial communities and serve as substrates for the production of fermentation products, such as short-chain fatty acids (SCFAs)¹⁷. Dietary fibers can exert health-promoting effects through stimulation of the production of SCFAs. Numerous recent publications have shown that these SCFAs play an important role in metabolism^{19,20} and immunity^{21,22}. In addition to the fermentation products of dietary fibers, microbial communities can secrete other metabolites, such as tryptophan metabolites or secondary bile acids, which have the potential to regulate intestinal immunity (Fig. 1)²³. In addition, stimulating the growth of commensal microbiota by dietary fibers may be beneficial for limiting the growth of pathogens that adhere to the intestinal wall less in the presence of a high abundance of gut commensals²⁴. Dietary fibers are therefore also proposed as a means to indirectly protect

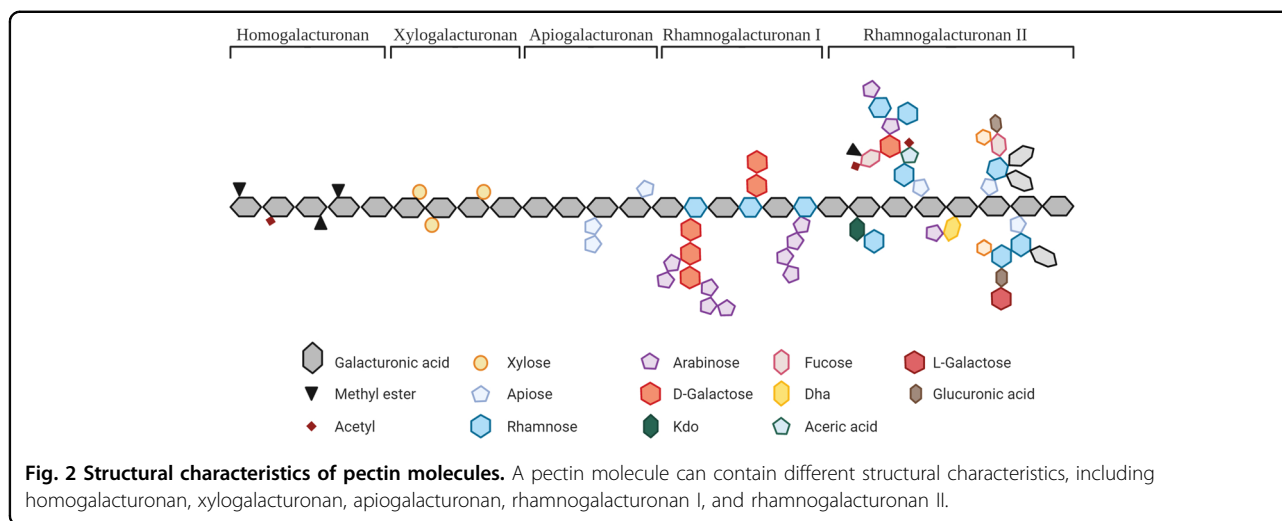
the gastrointestinal immune barrier from damage caused by pathogens²⁴.

The soluble dietary fiber pectin is an important dietary fiber with known modulatory effects on the gastrointestinal immune barrier. Pectins have been isolated from the primary and secondary cell walls of many fruits and vegetables, including citrus fruits, apples, sugar beets, and potatoes²⁵. They mainly consist of linear 1,4-D-galacturonan (homogalacturonan) segments and branched rhamnogalacturonan segments²⁵. Pectins can have many different structural characteristics contributing to their functional properties, including the degree of methyl-esterification, molecular weight or neutral side chain structures²⁵. Several studies involving animal models and human subjects have shown that pectins protect the intestinal barrier from damage^{26–28}. These effects may be exerted by direct interactions with the gastrointestinal immune barrier, as some types of pectins are known to interact with immune receptors^{29,30}. Furthermore, pectins may protect the intestinal barrier indirectly by stimulating the growth and diversity of microbiota communities as pectins are known to stimulate microbial communities³¹. These effects are strongly dependent on the chemical structure of pectins^{29–31}. In recent years, many studies have demonstrated the impact of specific structural features of pectins on their health benefits to consumers³². The main aim of this review article was to overview the current knowledge of the modulatory properties of specific chemical structures of pectins and their beneficial effects on the gastrointestinal immune barrier; for example, for a dietary fiber that might be instrumental in preventing many Western diseases⁵. We will focus on pectin structures that influence the immune system by direct effects on immune cells or by indirectly interacting with the immune system by modulating intestinal microbial communities and the metabolites they produce. This article may provide insight into the structural features responsible for intestinal health benefits. Ultimately, this might lead to tailoring of pectin formulation or products that might contribute to prevention or delay of human disease development.

Differences in the chemical structures of pectins

Pectins have been isolated from the primary and secondary cell walls of many fruits and vegetables. The structure of pectin is dependent on several parameters, including the origin, the endogenous enzyme activity or the method of extraction²⁵. Pectins are heteropolysaccharides consisting mainly of α -1,4-linked galacturonic acid (GalA) residues (Fig. 2). Some pectins consist of regions with only GalA molecules, which are known as homogalacturonans. Up to 70% of pectin molecules consist of homogalacturonan regions. In those regions, the GalA residues can be methyl-esterified at the





C6 carboxyl group. GalA residues in pectins can also be acetylated at O-2 or O-3, as is commonly found in sugar beet pectins^{25,33}. A certain percentage of the GalA residues of pectins can have attached methyl esters, and this percentage is known as the degree of methyl-esterification (DM). Pectins can be classified as low DM pectins (DM < 50%) or high DM pectins (DM > 50%)³⁴. These methyl-esterified GalA residues can be differently distributed along the pectin molecule. The degree of blockiness (DB) determines the distribution of non-esterified galacturonic acid residues. Pectins with a high DB contain a more blockwise distribution of non-esterified GalA residues, whereas low DB pectins have a more random distribution of non-esterified GalA residues³⁵. Homogalacturonan pectins have been isolated from several fruits and vegetables origins, including sunflower, citrus fruits, sisal, rice endosperm cell walls or apples³³.

In addition to homogalacturonan regions, pectins can contain other structural regions, such as xylogalacturonan, apiogalacturonan, rhamnogalacturonan I (RG-I) or rhamnogalacturonan II (RG-II) (Fig. 2). Xylogalacturonan regions are homogalacturonan structures substituted with xylose molecules. Apiogalacturonan regions are homogalacturonan structures with attached monosaccharide or disaccharide apioduranosyl. RG-I regions are based on disaccharide backbone structures of alternating galacturonic acid and rhamnose residues. The rhamnose residues in RG-I can be branched with neutral side chains consisting of galactose or arabinose. The GalA residues of RG-I are mostly non-methyl esterified. RG-II regions contain a different backbone than RG-I regions and consist of only galacturonic acid residues. RG-II molecules have complex pectin structures that may comprise up to 12 different branched sugar residues. These sugar molecules can be linked by 21 different glycosidic linkages, making RG-II molecules very complex^{25,36}. Pectins

containing regions with such a high number of neutral side chains have been isolated from many fruits and vegetables, including apples, sugar beets, apricots, carrots, cabbage, onions or pears³³.

The gastrointestinal immune barrier as a primary target for pectins

Pectins are considered to greatly impact the health of the gastrointestinal tract³⁷, although some studies have reported effects independent of those exerted on the gastrointestinal tract, including the direct uptake of pectic oligosaccharides in blood and the direct interaction of pectins with systemic organs³⁸. Currently, however, the pronounced health benefits of pectins are considered to result from modulating the intestinal immune barrier³⁷. As pectins might impact different aspects of the gastrointestinal immune barrier³⁷, we first briefly discuss the current understanding of the composition of the gastrointestinal immune barrier. The gastrointestinal immune barrier consists of multiple layers, including a mucus layer, a cellular layer of epithelial cells and the lamina propria containing immune cells (Fig. 3).

The mucus layer forms a physical barrier that separates the epithelium from the microbiota and luminal content³⁹. In addition, it provides a substrate for microbial growth^{24,40}. These bacteria secrete fermentation products that alter the composition and gelling properties of the mucus layer⁴⁰. These mucus strengthening effects are also induced by luminal dietary components, including pectins⁴¹. The mucus layer is composed of secretory products from goblet cells, Paneth cells and other epithelial cells⁴². The main components of the mucus layer are mucins, which are goblet cell-derived glycoproteins⁴². Luminal bacteria or dietary components can stimulate the secretion of mucins from goblet cells by activating pattern recognition receptors (PRRs) or stimulating SCFA

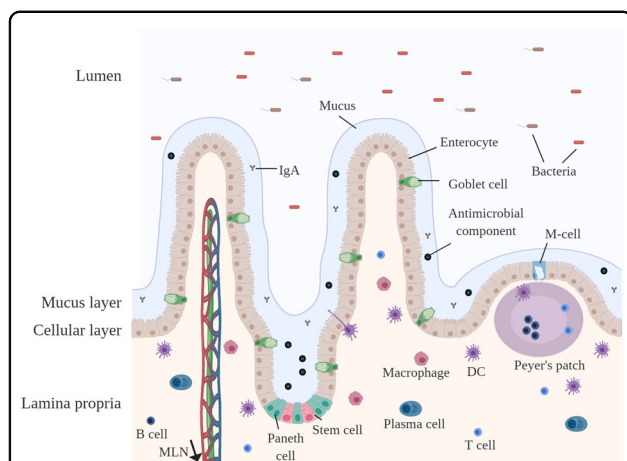


Fig. 3 The gastrointestinal immune barrier. The gastrointestinal immune barrier contains several layers that provide protection against harmful substances. From the outside (lumen) to the inside (lamina propria): (1) The mucus layer in the small intestine consists of a single loose layer, whereas in the colon, it consists of a loose outer layer and a dense inner layer. The mucus layer provides extra protection against pathogens due to the presence of IgA and antimicrobial peptides. (2) The cellular layer consists of a single layer of epithelial cells that forms a physical barrier against incoming antigens. (3) Beyond the cellular layer is the lamina propria, which is densely populated with immune cells. These immune cells provide protection against harmful substances but also induce tolerance against harmless substances.

production⁴³. Mucin secretion from goblet cells can also be enhanced by immune cell-derived cytokines⁴⁴. In addition to mucins, the mucus layer contains immunoglobulin A (IgA) and Paneth cell-derived antimicrobial components, which provide a defense against invading, undesired microbial species⁴⁵. Luminal bacteria or dietary components can stimulate the secretion of these antimicrobial components after PRR activation in Paneth cells⁴⁶.

Underneath the mucus layer resides the cellular layer, which is composed of a single layer of epithelial cells and intraepithelial lymphocytes. The intraepithelial lymphocytes secrete factors that support and maintain the epithelial layer⁴⁷. The epithelial cells consist of enterocytes and secretory epithelial cells, such as the aforementioned Paneth cells or goblet cells⁴⁸. Furthermore, the cellular layer contains an additional epithelial cell type called microfold (M) cells, which are present on subepithelial lymphoid structures called Peyer's patches (PP). M cells are specialized antigen sampling cells that present antigens to underlying immune cells in the PP⁴⁹. Together, these epithelial cells form a physical barrier that separates the luminal content from the lamina propria. The integrity of the gastrointestinal barrier relies on the permeability of the epithelial cell layer⁵⁰. A network of desmosomes, tight junctions and adherens junctions regulates epithelial permeability and thereby the

paracellular passage of the luminal content to the underlying lamina propria⁵⁰. Epithelial integrity can be enhanced by bacteria or luminal dietary components through the activation of PRRs, such as TLR2, or through SCFA-induced GPR activation^{51,52}.

A large proportion, 70–80%, of all immune cells in the human body are located in gut-associated lymphoid tissues (GALT), which include the lamina propria, PP and mesenteric lymph nodes (mLN)³⁹. These immune cells must recognize incoming antigens and provide protection against harmful substances, but also induce tolerance for commensal bacteria⁵³. The lamina propria is the homing site for a large proportion of innate immune cells, such as DCs, macrophages, innate lymphoid cells and granulocytes, and adaptive immune cells, such as B cells and T cells³⁹. DCs and macrophages are innate immune cells that can recognize luminal antigens with PRRs⁵⁴. DCs are capable of sampling antigens and food components through their epithelial-penetrating dendrites⁵⁵. After recognition, DCs and macrophages can phagocytose microbes or other molecules and present them as antigens to adaptive immune cells in the lamina propria, PP or mLN. Via this route, DCs and macrophages regulate the induction of IgA-producing plasma cells or induce the differentiation of naïve T cells into regulatory T cells (Treg) or effector T cells (Th1, Th2, Th9, Th17, or Th22)⁵⁶. In addition, the differentiation of naïve T cells can be induced by microbial-derived SCFAs or aryl hydrogen receptor ligands⁵⁷. These effector T cells induce pro-inflammatory responses against specific antigens, whereas their counterparts, Tregs, suppress these pro-inflammatory responses⁵⁷.

PPs are located in the small intestine and are located under the epithelium. PPs consist of DCs, macrophages, B cells, and T cells. Luminal antigens from the microbiota or dietary components can be taken up through M cells and are presented to subepithelial dendritic cells⁴⁹. DCs present luminal antigens to underlying adaptive immune cells, leading to specific T cell differentiation or the formation of IgA-producing plasma cells⁵⁸.

The immune cells in the lamina propria and in the PP can communicate with immune cells in the mLN. CD103⁺-expressing DCs mainly migrate to the mLN via lymph vessels, after which they stimulate naïve T cells and B cells. CD103⁺-expressing DCs together with mLN stromal cells generate gut-homing T cells^{59,60}.

A balanced regulation between pro-inflammatory and anti-inflammatory responses in the gastrointestinal tract leads to protection against pathogens and tolerance to food antigens or commensal microbiota⁶¹. However, tolerance to dietary antigens appears to develop in a different compartment of the gastrointestinal tract than tolerance to intestinal microbiota^{61,62}. This is because intestinal immunity in the small intestine is more directed towards

exposure to dietary antigens, whereas immune responses in the large intestine are more adapted to the greater bacterial load^{61,62}. Pectins may therefore stimulate the immune system in the small intestine through direct interactions with immune cells, whereas they may stimulate large intestinal immunity in a microbiota-dependent manner.

Interaction of pectins with immune cells and their receptors

Dietary fibers such as pectins can impact the aforementioned gastrointestinal immune barrier at different levels, as discussed in the following sections.

Strengthening of the mucus layer

Dietary fibers such as pectins can strengthen the mucus layer through several mechanisms⁶³. A strengthened mucus layer may limit the passage of harmful substances into the underlying tissues and thereby prevent activation of inflammatory responses. Several studies have shown that pectins have beneficial effects on the integrity of the gastrointestinal mucus layer. Under both healthy and diseased conditions, it has been shown that pectins can strengthen the intestinal mucus layer by influencing goblet cells or by the mucoadhesive effects of pectins^{41,64–66}.

The effects of pectins on the mucus layer are dependent on the structure of pectin^{41,64,65}. *In vitro*, both DM30 and DM59 pectins stimulated mucin secretion in HT-29MTX cells⁴¹. However, *in vivo* in rats, only DM30 pectins, and not DM59 pectins, were able to stimulate jejunal mucus secretion by goblet cells without affecting the number of mucus-secreting goblet cells⁴¹. The different effects of low and high DM pectins on mucus secretion could be explained by the different mucoadhesive properties of low and high DM pectins. Due to the negative charge of their non-esterified galacturonic acid residues, DM38 pectins cannot interact with the negatively charged mucins⁶⁵. Low DM pectins are thereby able to penetrate the mucus layer and reach the epithelium, where they may stimulate the production and secretion of mucus by goblet cells⁶⁷. DM70 pectins, however, can form hydrogen bonds with mucins and form gel networks that strengthen the mucus layer⁶⁵. High DM pectins are not thought to reach goblet cells to induce mucus secretion, but they may protect the epithelium from harmful mucus-penetrating agents by strengthening the mucus layer. In addition, the pectin structure of RG-I showed protective effects on the mucus layer in mice with DSS-induced colitis⁶⁶. RG-I protected the mucus layer by preserving the number of goblet cells and the expression of Muc-1⁶⁶. Together, these findings suggest that low DM pectins, high DM pectins or RG-I pectin structures can strengthen gut barrier function by

stimulating mucin secretion by goblet cells or through mucus adhesive properties.

Preservation of epithelial integrity

Dietary fibers are known to have positive effects on epithelial cell layer integrity in the gastrointestinal tract. They can enhance epithelial integrity by stimulating gut bacteria to produce SCFAs that are derived from microbial fermentation of dietary fibers or through direct interaction with pattern recognition receptors (PRRs), such as TLR2^{14,68}. Several studies have highlighted the importance of pectins in the preservation of epithelial integrity under healthy and diseased conditions^{27,28,69}. In healthy young adults and elderly individuals, four weeks of pectin supplementation did not increase epithelial barrier integrity, as tight junction-related genes were unchanged after pectin administration²⁸. Under diseased conditions, pectins lowered epithelial permeability in Bangladeshi children with persistent diarrhea⁶⁹. In addition, pectins were able to maintain epithelial integrity in rats after disruption by a high-fat diet²⁷. These studies suggest that pectins cannot enhance epithelial integrity under healthy conditions, but they can restore or maintain epithelial integrity under diseased conditions.

Recent research indicates that not all pectins but specific structural characteristics of pectins induce the protective effects of pectins on epithelial integrity, which might cause sometimes contradictory findings in humans. DM63 pectins were not able to enhance epithelial integrity in intestinal biopsies from healthy young adults and elderly individuals using Ussing chambers²⁸. However, Vogt et al. demonstrated *in vitro* that DM30 or DM74 pectins were more protective against the epithelial barrier disruptor PMA than DM56 pectins²⁹. Moreover, DM7 pectins maintained epithelial integrity in mice with caerulein-induced pancreatitis by preserving tight junction structures²⁶. The findings of Vogt et al. and Sun et al. suggest that compared to DM63 pectins, low DM pectins (DM < 30) or very high DM pectins (DM > 74) might enhance epithelial integrity in young adults and elderly individuals²⁸. In addition to the DM-dependent effects, the *in vitro* effect of RG-I pectins was investigated. RG-I pectins reduced intestinal permeability in Caco-2 cells by maintaining claudin-1 structures⁶⁶. These studies demonstrate that pectins can protect epithelial integrity against barrier-disrupting agents by maintaining tight junction structures. Low DM pectins and very high DM pectins or pectins with RG-I structures may be responsible for these effects^{26,29,66}.

Pectin and innate immune responses after uptake in Peyer's patches

Many dietary fibers, including pectins, can directly interact with innate immune cells, such as macrophages

or DCs, and influence their responses^{70–73}. It has been suggested that dietary fibers are transported into the PP through M cells and activate immune cells, and this effect has been demonstrated for pectins^{70,74–76}. In addition, *in vitro* studies have demonstrated that pectins activate or inhibit the responses of DCs and macrophages through direct interaction with immune receptors^{71–73,77}. The activation and inhibition of macrophage and DC responses may be beneficial to the host under different circumstances. Under healthy conditions, mild activation of innate immune responses by pectins can be beneficial because it promotes intestinal immunity. Furthermore, under conditions with aberrant immune activation, inhibition of immune activation can be beneficial⁷⁸. Attenuating immune activation may prevent the initiation of excessive immune responses and thereby limit inappropriate activation of immune cells and inflammation⁷⁸.

Several *in vitro* studies have demonstrated that specific pectin structures can activate DC and macrophage responses^{73,76,77}. Suh et al. demonstrated that pectins must have an intact backbone to exhibit their activating effects, as pectin hydrolysates with low molecular weights have no activating properties⁷⁶. Furthermore, other studies demonstrated that RG-I and RG-II pectins activate macrophages and dendritic cells, but RG-I pectins activate these cells more than RG-II pectins^{73,77}. Galactan and arabinan structures seem to regulate the strong activation of immune responses by RG-I pectins^{73,77}. It has also been demonstrated that the DM of pectin plays an important role in immune activation. Partial removal of methyl esters from DM57 pectins to DM21 pectins enhanced the macrophage-activating properties of pectins⁷². This was, however, not corroborated by another study that showed that partial removal of methyl esters from DM85 pectins to DM17 pectins strongly decreased its macrophage-activating effects⁷⁹. This could, however, be explained by activating properties of RG-I side chains in this DM85 pectin, which were removed together with the methyl esters by a specific procedure⁷⁹. Current insight is that the molecular weight, DM and RG-I side chain structures of pectin influence the ability of pectins to activate macrophages and DCs. RG-II side chains may be involved but activate immune cells to a lower extent^{72,73,76,77,79}.

Several *in vitro* studies have demonstrated that specific pectin structures can inhibit DC and macrophage responses^{70–72}. Ishisono et al. suggested that the highly branched side chains of pectins are required for the anti-inflammatory effects of pectins on LPS-induced IL-6 secretion in macrophages⁷⁰. This study, however, did not specify which specific side chains of RG-I or RG-II pectins were required. Another study showed that removing the RG-I side chains of pectins enhanced the inhibitory effect of pectins on LPS-induced cytokine

secretion in macrophages⁷¹. The anti-inflammatory effects as measured by Ishisono et al. may therefore have been derived from RG-II side chain structures. Furthermore, another study confirmed that DM21 pectins, with a certain degree of acetylation of 9%, have anti-inflammatory properties and inhibit macrophage responses⁷¹. Together, these studies suggest that the inhibitory effect of pectins is orchestrated through structural characteristics such as DM, acetylation, RG-I, and RG-II structures.

Interaction of pectin with pattern recognition receptors

Innate immune cells can recognize dietary fibers through interaction with extracellular PRRs. PRRs function as sensors that recognize molecular patterns from microbes, known as pathogen-associated molecular patterns (PAMPs). PRRs are expressed by innate immune cells, such as macrophages, dendritic cells, neutrophils and epithelial cells⁸⁰. Molecules derived from damaged cells are known as damage-associated molecular patterns (DAMPs). PRRs play an important role in initiating innate immune responses⁸⁰. In recent years, many studies have reported that PRRs interact with dietary fibers^{80–82}. Pectins are known to affect immune responses through interactions with the PRRs galectins and Toll-like receptors^{29,83}.

Pectin has been reported to bind to Galectin-3⁸³. Galectin-3 is expressed extracellularly or intracellularly by different cell types and plays a role in health and disease⁸⁴. Extracellular Galectin-3 is known to interact with carbohydrates, but intracellular Galectin-3 is considered to bind to intracellular proteins⁸⁴. The effects of pectins on Galectin-3 are suggested to initially occur via extracellular Galectin-3. However, as pectin and Galectin-3 can be endocytosed by macrophages, pectins may also affect intracellular pathways by binding to Galectin-3⁸⁵. The binding of pectins to Galectin-3 is established through the interaction between the lectin domain of Galectin-3 and galactose residues or arabinan side chains of RG-I and RG-II pectins⁸³. By binding to Galectin-3, pectins can stimulate immunity against cancer cells. Cancer cells express Galectin-3, limiting T-cell mediated immunity against cancer cells. Galectin-3 binds to T-cells, leading to inhibition of T cell responses or apoptosis. By binding to Galectin-3, pectins block the inhibition of T-cell mediated immunity against cancer cells and can therefore be used in anticancer therapy^{86,87}. In addition to cancer cells, Galectin-3 is expressed on immune cells, such as monocytes, macrophages, DCs, neutrophils and epithelial cells. These immune cells use Galectin-3 as a PRR to induce innate immune responses against pathogens⁸⁸. Pectins might enhance these responses by binding to Galectin-3. Thus, RG-I and RG-II pectins with galactose or arabinan structures can bind to Galectin-3, and pectins might exert

anti-metastatic or anti-pathogenic effects through this interaction^{86–88}.

Toll-like receptors are another type of PRR that can interact with pectins. Toll-like receptors are intracellularly or extracellularly expressed on most immune and epithelial cells^{51,89}. Specific pectin structures can activate signaling of TLR2 and TLR4, which are extracellularly expressed, and thereby stimulate innate immune responses. Pectins containing RG-II and homogalacturonan structures induce strong activation of TLR4 in DCs^{90,91}. The TLR4-activating effect of homogalacturonan pectins is independent of the DM, as DM30, DM56 and DM74 pectins activate TLR4 at a similar level²⁹. In contrast to TLR4, TLR2 activation by pectins is exerted in a DM-dependent manner. Only very high-DM pectins (DM74) activate TLR2, whereas lower DM pectins (DM30 and DM56) do not activate TLR2²⁹. This indicates that the activation of TLR2 is induced after recognition of very high-DM pectins. TLR4 may be induced after recognition of the specific patterns of the non-esterified galacturonic acid backbone or RG-II structures.

In addition to their TLR-activating properties, pectins are recognized for their TLR-inhibiting properties on TLR2 and TLR4. Several studies have shown that pectins inhibit LPS-induced TLR4 activation in monocytes or dendritic cells^{70,92}. These TLR4-inhibiting effects were suggested to be exerted through neutral side chains of RG-I or RG-II structures⁷⁰. In addition, the DM can explain the TLR4-inhibiting effects of pectins because very high DM (DM90) pectin inhibited LPS-induced TLR4 activation in macrophages more effectively than lower DM pectins (DM60 and DM30)⁹³. Furthermore, an opposite trend was observed for TLR2-1 inhibition. TLR2-1 was more effectively inhibited by low DM pectins, and this TLR2-1-inhibiting effect decreased with higher DM pectins³⁰. Together, these results suggest that TLR4 inhibition is exerted through recognition of high DM structures or neutral side chain structures of RG-I or RG-II pectins. TLR2-1 is more effectively inhibited by low DM pectins³⁰.

Impact of pectins on gut microbiota and microbial metabolic products

The gastrointestinal tract harbors trillions of microorganisms, including bacteria, fungi, viruses, protozoa and archaea, which together form the intestinal microbiota¹⁸. These intestinal species interact with the intestinal immune barrier, contributing to the health status of the host¹⁸. Given the importance of health, maintaining a balanced intestinal microbiota composition is crucial. Dysbiosis of intestinal microbiota composition may disturb host-microbe interactions and contribute to the development of diseases⁵. A balanced composition of the intestinal microbiota is therefore vital to maintain health and prevent disease development.

Dietary fibers, including pectin, are components that can contribute to a balanced microbiota composition. Dietary fibers can have beneficial effects on the intestinal immune barrier via the intestinal microbiota through several mechanisms⁹⁴. For example, dietary fibers can increase the abundance of beneficial intestinal microbiota¹⁷. As a consequence, dietary fibers reduce the abundance of pathogens or mucin-degrading bacteria, which in turn protect the epithelium against invading pathogens, as has been shown for *Citrobacter rodentium* in a mouse study²⁴. Another mechanism by which dietary fibers have beneficial effects on the intestinal immune barrier is through stimulating gut bacteria to produce SCFAs¹⁸. Dietary fibers can be used by anaerobic bacteria as fermentation substrates to produce SCFAs, including acetate, propionate and butyrate¹⁸. SCFAs help maintain a low pH in the intestine, thereby inhibiting pathogen growth and favoring the growth of healthy intestinal microbiota⁹⁵. In addition, SCFAs can dampen immune responses by acting on DCs, macrophages, neutrophils, T regulatory cells and epithelial cells²¹. They influence immune responses through interactions with GPR41, GPR43 or GPR109a, by inhibition of histone deacetylases or by direct interaction with transcription factors^{96,97}. The influence of SCFAs on epithelial cells is mainly through stimulation of butyrate production in bacteria, as epithelial cells use butyrate as an energy substrate that stimulates epithelial cell growth⁹⁸. Moreover, dietary fibers can have beneficial effects on the intestinal immune barrier, favoring adhesion of commensal or beneficial bacteria to the epithelium^{99,100}. Thus, dietary fibers can have beneficial effects on the intestinal immune barrier through stimulation of microbial communities and SCFA production and modulation of bacterial adhesion to epithelial cells^{18,24,99,100}. Proof that pectin can influence gut microbiota via one or a combination of the above described mechanisms is discussed in the next sections.

Stimulation of microbiota communities by pectins

Many studies have demonstrated that dietary pectin can influence the composition and diversity of the gut microbiota^{27,101–107}. The genera *Bacteroides* and *Prevotella* are the primary pectin degraders, as they possess carbohydrate-active enzymes (CAZymes) within their polysaccharide utilization loci (PUL)¹⁰⁸. These bacteria use lyases, methylesterases and acetylases to breakdown pectin molecules¹⁰⁹. The breakdown substrates can be used by surrounding bacteria as growth substrates and thereby influence the composition of the microbial community¹¹⁰. Several in vitro and in vivo studies have reported that pectins induce distinct microbial compositions^{27,101–107}. In vitro, it was shown that pectins can increase the abundance of *Lactobacilli*, *Bacteroides* and *Prevotella*^{101–103}. Furthermore, some in vivo studies

showed that pectins increase the abundance of Bacteroidetes, Clostridiales, *Bacteroides*, *Lactobacilli* and *Prevotella*, whereas other in vivo studies report that pectins decrease the abundance of *Lactobacillus* and *Bacteroides* spp.^{27,104–107}. The inconsistencies in the composition of the microbial communities between the different studies may be related to the variations in initial microbiota composition, fermentation substrates or the influence of the host; however, a recent correlation study found that the impact by which pectins affect the composition of the microbial community strongly depends on the structural characteristics of pectins³¹.

In a recent in vitro fermentation study, five structural characteristics of pectins were strongly linked to shifts in microbiota composition. The five structural characteristics included the DM of homogalacturonan regions, the composition of neutral sugars, the distribution of homogalacturonan and rhamnogalacturonan fractions, the degree of branching and the presence of amide groups³¹. This study suggested that DM is the most important regulator of microbiota composition³¹. The effect of DM has been demonstrated in other in vitro and in vivo studies^{107,111,112}. DM8 and DM35 pectins were preferably metabolized by gut microbiota and induced a higher abundance of *Bifidobacteria* and *Bacteroides* than DM66, DM71 and DM93 pectins in fermentation studies^{111,112}. In addition, both DM29 and DM53 pectins induced a higher abundance of *Prevotella* spp. and a lower abundance of *Lactobacillus* in the pig colon, but these effects were stronger with low DM pectins than with high DM pectins¹⁰⁷. The differences in microbiota composition between low and high DM pectins may be related to their differences in digestibility. Low DM pectins are digested faster than high DM pectins, which is suggested to be due to the production of pectate lyases and methyl esterases that digest low DM pectins faster than high DM pectins¹¹². Enzymatic degradation higher in the gastrointestinal tract of low DM pectins may lead to earlier availability of growth substrates for the microbiota than high DM pectins. Consequently, low DM pectins start inducing the growth of microbiota communities earlier in the gastrointestinal tract than high DM pectins^{112,113}. In addition to DM-dependent effects of pectins, other in vitro fermentation studies confirmed that the RG-I structures and RG-I side chain structures, i.e., arabinan, galactan, oligoarabinosides, and oligogalactosides, of pectins were very efficient in stimulating the growth of *Bifidobacteria*^{101,113}. Together, these results show that pectins can induce shifts in microbiota composition and that these shifts are mainly dependent on the DM or RG-I structures of pectins.

Stimulation of SCFA production by pectins

SCFAs are metabolic products derived from the fermentation of dietary fibers under anaerobic conditions⁹⁵.

Particularly, Bacteroidetes and Firmicutes can utilize dietary fibers and are the main producers of the SCFAs acetate, butyrate and propionate in the gastrointestinal tract^{95,114,115}. The generation of SCFAs strongly depends on substrate availability, microbiota composition and intestinal transit time⁹⁵.

Pectins can be used as fermentation substrates to stimulate the production of SCFAs^{31,112,113,116,117}. Each individual structural pattern of pectin induces distinct profiles of acetate, propionate and butyrate in the gastrointestinal tract. Larsen et al. showed that after in vitro fermentation of RG-I structures, high levels of propionate and butyrate were induced³¹. This effect of RG-I structures on SCFA production was confirmed in rats, showing an increased production of SCFAs production in rats fed with RG-I-enriched diets¹¹³. Furthermore, a correlation study by Larsen et al. confirmed an association between high DM pectins and high levels of propionate³¹. The higher production of propionate induced by DM53 pectins compared to DM29 pectins was also reported in another fecal batch fermentation study¹¹⁶. In contrast, an opposite pattern was observed in rats, showing that total SCFA concentrations were higher in the cecum of rats fed with low DM pectins (DM0, DM1, DM35, DM36, and DM40) than in rats fed with high DM pectins (DM56, DM58, DM63, DM64, DM69, DM71, and DM93)^{112,117}. The contradicting findings on the impact of pectin structures on SCFA production may result from a different initial microbiota composition, a different pectin dosage, a difference in pectin digestibility or the influence of the host on microbiota composition³¹. Overall, the current understanding is that pectins can be used as fermentation substrates for gut microbiota and that the production of SCFAs is strongly influenced by the RG-I structures or the DM of pectins.

Effects on bacterial adhesion to epithelial cells

Dietary fibers are known to inhibit the growth of pathogens by preventing their adhesion to epithelial cells. Blocking pathogenic adhesion to epithelial cells may be beneficial because it prevents pathogen-induced epithelial damage¹¹⁸. Several studies have demonstrated that pectins and pectic-oligosaccharides (POS) have the ability to block the adhesion of pathogens to epithelial cells^{99,119–121}. POS are known to reduce the adhesion of pathogenic bacteria, such as *Escherichia coli*, *Salmonella Typhimurium*, *Listeria monocytogenes*, and *Campylobacter jejuni*, to epithelial cells^{122–124}. This anti-adhesive effect of pectins and POS on pathogens was higher with pectins with a lower molecular weight or DM3 or DM5 pectins^{119,121}.

In contrast to the anti-adhesive effects of pectins on pathogens, stimulating adhesion of commensal bacteria to epithelial cells may be favorable, as commensal bacteria

may compete with pathogens for attachment or secrete other beneficial products¹¹⁸. Several studies have shown that pectins or pectic oligosaccharides enhance the adherence of commensal or probiotic *Lactobacilli* strains to epithelial cells^{122,124}. The effects were species dependent, as pectins enhanced the adhesive effects of some *Lactobacillus* species, such as *Lactobacillus plantarum* 0981, 0995 or *Lactobacillus brevis* 0983, whereas pectins decreased the adhesion of other *Lactobacillus* species, such as *Lactobacillus paracasei* 0985, *Lactobacillus plantarum* 0989, 0990, and 0996¹²². The structural characteristics were, however, not specified in those studies. The exact mechanisms by which pectins or dietary fibers affect bacterial attachment are not fully understood and are thought to be multifaceted¹²⁵. Fibers may resemble the saccharides from glycoproteins on epithelial cells that pathogens normally adhere to¹²⁶. Furthermore, pectins may target other mechanisms in epithelial cells, including the regulation of transcription factors, chaperone proteins, glycosidic hydrolysates or other adhesion-related proteins¹²⁵.

Concluding remarks and future perspectives

This review discusses the current knowledge on the impact of specific pectin structures on the intestinal immune barrier (Fig. 4). Several studies suggest that multiple structural characteristics of pectins exhibit diverse effects that enhance the intestinal immune barrier through a direct, microbiota-independent interaction with immune cells. Pectins may enhance the intestinal immune barrier by strengthening the mucus layer, enhancing epithelial integrity or activating and inhibiting macrophage and DC responses, which may be governed through interactions with PRRs^{30,41,64–66,70–73,76,77}. However, most of these studies were performed *in vitro*. Some *in vivo* studies have confirmed the microbiota-independent effects of pectins on the gastrointestinal immune barrier. A recent study showed that pectins ameliorate TNSB-induced colitis in a microbiota-independent manner, as pectins had colitis-attenuating effects after deletion of microbiota by antibiotics¹²⁷. Moreover, to show the direct microbiota-independent effects of pectins on the gastrointestinal immune barrier, it is recommended to perform *in vivo* studies with germ-free mice, such as those previously performed by Fransen et al., for inulin-type fructans¹²⁸. Furthermore, additional experiments with human intestinal organoid models are needed to further extrapolate these direct effects of pectins on the gastrointestinal immune barrier of humans¹²⁹.

In addition, the ability of pectins to reinforce the gastrointestinal immune barrier by impacting the gut microbiota and its fermentation products was reviewed. Specific pectin structures may contribute to intestinal homeostasis by stimulating the growth of microbial

communities and enhancing their metabolic activity or by affecting the attachment of bacteria to epithelial cells^{18,24,99,100}. However, due to the individual differences of the human microbiota, achieving similar effects of the pectin structures in humans may be challenging¹³⁰. To better understand the microbiota-dependent impact of pectins on the gastrointestinal immune barrier, human studies are needed in which diet, age, gender, use of medication and host milieu are controlled¹³¹.

The dietary fiber pectin is a complex molecule with many structural characteristics²⁵. Most studies that investigated the health effects of pectins used pectins with a combination of several structural characteristics. It is therefore hard if not impossible to determine which specific structural patterns of pectins induced health-promoting effects in these studies. To better understand how specific pectin structures can stimulate the intestinal immune barrier, future research should address the following: (1) The impact of the degree of single structural components of pectins (i.e., DM or acetylation, arabinose or galactose) on the gastrointestinal immune barrier; (2) The impact of the distribution of a single structural component (i.e., degree of blockiness) of pectins on the gastrointestinal immune barrier; (3) The combined impact of the degree and distribution of single structural characteristics of pectin on the gastrointestinal immune barrier. This may lead to the development of specific pectin formulations with beneficial effects on the gastrointestinal immune barrier in specific target groups. Because of its wide variety of structural features and specific health effects, pectin is a molecule that can be tailored for personalized medicine. Pectins may, for instance, be useful in preventing or restoring dysbiotic microbiota compositions associated with obesity, inflammatory bowel disease and metabolic syndrome⁹⁴. Several studies have shown that supplementation of dietary fibers can prolong remission periods in patients with IBDs^{132,133}, but no human studies have demonstrated that dietary fibers can be used to treat active IBDs¹³⁴, suggesting that dietary fibers can prevent but not cure IBD symptoms. In Crohn's disease, ulcerative colitis and IBS food processing are dysregulated and might lead to disturbed fermentation of dietary fibers with possible negative effects on disease progression as a consequence¹³⁴. This should always be considered when administering dietary fibers in these disorders. Furthermore, the microbiota-independent effects of pectins, including reducing mucositis by blocking TLR2-1, may be useful in limiting chemically induced intestinal inflammation after chemotherapeutic or radiotherapeutic treatments^{30,135}. Pectin-based nutraceutical or functional foods may therefore be used to limit the development of diseases and maintain health in a microbiota-dependent and microbiota-independent manner.

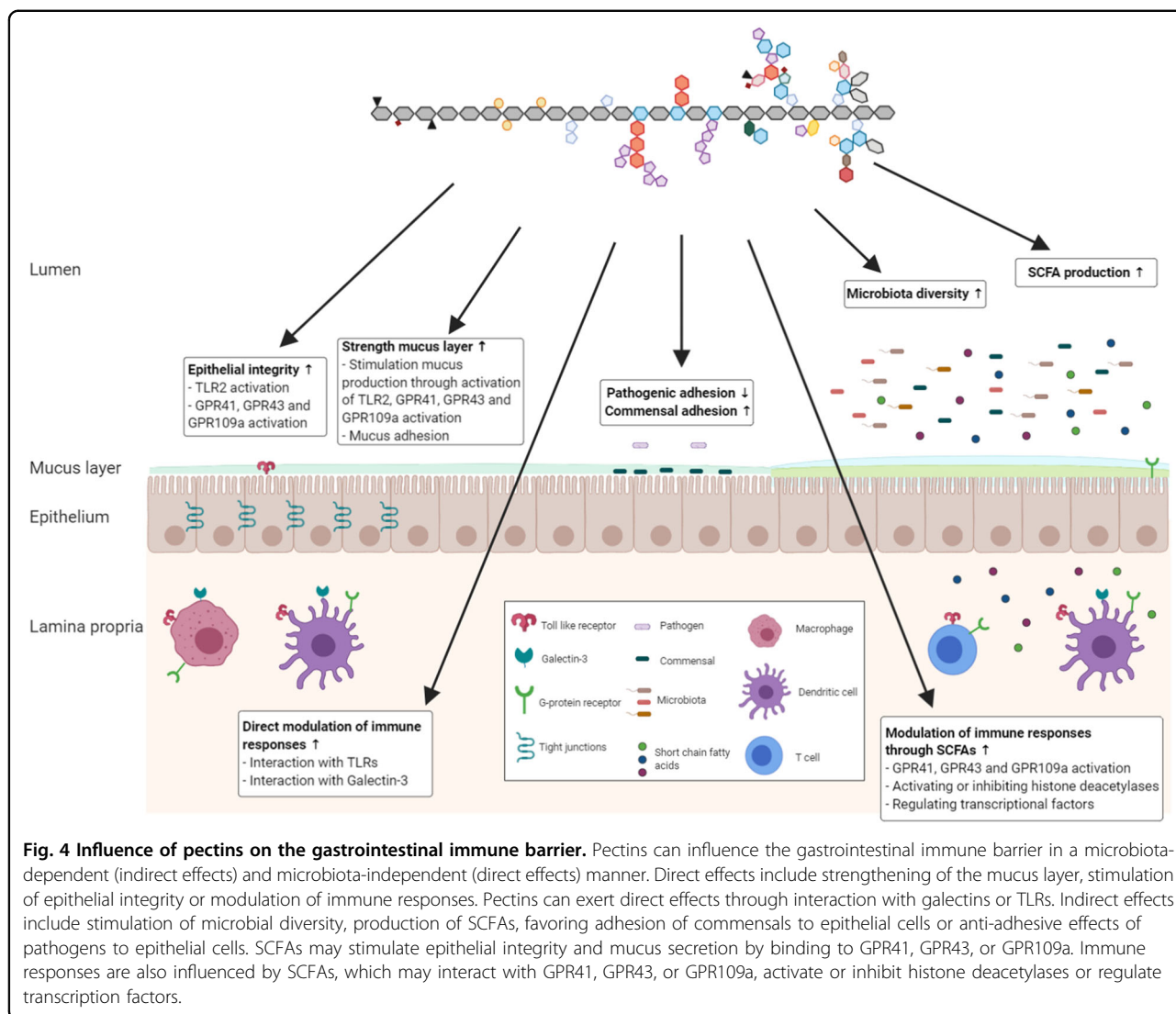


Fig. 4 Influence of pectins on the gastrointestinal immune barrier. Pectins can influence the gastrointestinal immune barrier in a microbiota-dependent (indirect effects) and microbiota-independent (direct effects) manner. Direct effects include strengthening of the mucus layer, stimulation of epithelial integrity or modulation of immune responses. Pectins can exert direct effects through interaction with galectins or TLRs. Indirect effects include stimulation of microbial diversity, production of SCFAs, favoring adhesion of commensals to epithelial cells or anti-adhesive effects of pathogens to epithelial cells. SCFAs may stimulate epithelial integrity and mucus secretion by binding to GPR41, GPR43, or GPR109a. Immune responses are also influenced by SCFAs, which may interact with GPR41, GPR43, or GPR109a, activate or inhibit histone deacetylases or regulate transcription factors.

Acknowledgements

This work was funded by the public-private partnership 'CarboKinetics' coordinated by the Carbohydrate Competence Center (CCC, www.cccresearch.nl). CarboKinetics is financed by participating industrial partners Agrifirm Innovation Center B.V., Nutrition Sciences N.V., Cooperatie Avebe U.A., DSM Food Specialties B.V., VanDrie Holding N.V. and Sensus B.V., and allowances of The Netherlands Organization for Scientific Research (NWO).

Conflict of interest

The authors declare that they have no conflict of interest.

Publisher's note

Springer Nature remains neutral with regard to jurisdictional claims in published maps and institutional affiliations.

Received: 5 March 2020 Revised: 31 March 2020 Accepted: 27 April 2020. Published online: 10 September 2020

References

1. Fardet, A. New hypotheses for the health-protective mechanisms of whole-grain cereals: what is beyond fibre? *Nutr. Res. Rev.* **23**, 65–134 (2010).
2. Aune, D. et al. Dietary fibre, whole grains, and risk of colorectal cancer: systematic review and dose-response meta-analysis of prospective studies. *BMJ* **343**, d6617 (2011).
3. Reynolds, A. et al. Carbohydrate quality and human health: a series of systematic reviews and meta-analyses. *Lancet* **393**, 434–445 (2019).
4. Burkitt, D. P., Walker, A. R. P. & Painter, N. S. Effect of dietary fibre on stools and transit-times, and its role in the causation of disease. *Lancet* **2**, 1408–1412 (1972).
5. Sonnenburg, E. D. & Sonnenburg, J. L. Starving our microbial self: the deleterious consequences of a diet deficient in microbiota-accessible carbohydrates. *Cell Metab.* **20**, 779–786 (2014).
6. König, J. et al. Human intestinal barrier function in health and disease. *Clin. Transl. Gastroenterol.* <https://doi.org/10.1038/ctg.2016.54> (2016).
7. Schenk, M. & Mueller, C. The mucosal immune system at the gastrointestinal barrier. *Best. Pract. Res. Clin. Gastroenterol.* **22**, 391–409 (2008).

8. Mu, Q., Kirby, J., Reilly, C. M. & Luo, X. M. Leaky gut as a danger signal for autoimmune diseases. *Front. Immunol.* <https://doi.org/10.3389/fimmu.2017.00598> (2017).
9. McGuckin, M. A., Eri, R., Simms, L. A., Florin, T. H. J. & Radford-Smith, G. Intestinal barrier dysfunction in inflammatory bowel diseases. *Inflamm. Bowel Dis.* **15**, 100–113 (2009).
10. Catalioto, R.-M., Maggi, C. & Giuliani, S. Intestinal epithelial barrier dysfunction in disease and possible therapeutic interventions. *Curr. Med. Chem.* **18**, 398–426 (2012).
11. Breton, J. et al. Intrinsic immunomodulatory effects of low-digestible carbohydrates selectively extend their anti-inflammatory prebiotic potentials. *Biomed. Res. Int.* <https://doi.org/10.1155/2015/162398> (2015).
12. Ermund, A., Schütte, A., Johansson, M. E. V., Gustafsson, J. K. & Hansson, G. C. Studies of mucus in mouse stomach, small intestine, and colon. I. Gastrointestinal mucus layers have different properties depending on location as well as over the Peyer's patches. *Am. J. Physiol. Gastrointest. Liver Physiol.* <https://doi.org/10.1152/ajpgi.00046.2013> (2013).
13. Mackie, A., Rigby, N., Harvey, P. & Bajka, B. Increasing dietary oat fibre decreases the permeability of intestinal mucus. *J. Funct. Foods* **26**, 418–427 (2016).
14. Vogt, L. M. et al. Toll-like receptor 2 activation by β 2 \rightarrow 1-fructans protects barrier function of T84 human intestinal epithelial cells in a chain length-dependent manner. *J. Nutr.* **144**, 1002–1008 (2014).
15. Bermudez-Brito, M. et al. The impact of dietary fibers on dendritic cell responses in vitro is dependent on the differential effects of the fibers on intestinal epithelial cells. *Mol. Nutr. Food Res.* **59**, 698–710 (2015).
16. Cai, Y., Folkerts, J., Folkerts, G., Maurer, M. & Braber, S. Microbiota-dependent and -independent effects of dietary fiber on human health. *Br. J. Pharmacol.* <https://doi.org/10.1111/bph.14871> (2019).
17. Holscher, H. D. Dietary fiber and prebiotics and the gastrointestinal microbiota. *Gut Microbes* **8**, 172–184 (2017).
18. Nicholson, J. K. et al. Host-gut microbiota metabolic interactions. *Science* **336**, 1262–1267 (2012).
19. Bellahcene, M. et al. Male mice that lack the G-protein-coupled receptor GPR41 have low energy expenditure and increased body fat content. *Br. J. Nutr.* **109**, 1755–1764 (2013).
20. Kimura, I., Inoue, D., Hirano, G. & Tsujimoto, G. The SCFA receptor GPR43 and energy metabolism. *Front. Endocrinol. (Lausanne)*. <https://doi.org/10.3389/fendo.2014.00085> (2014).
21. Smith, P. M. et al. The microbial metabolites, short-chain fatty acids, regulate colonic T reg cell homeostasis. *Science* **341**, 569–573 (2013).
22. Li, M. et al. Pro- and anti-inflammatory effects of short chain fatty acids on immune and endothelial cells. *Eur. J. Pharmacol.* **831**, 52–59 (2018).
23. Roager, H. M. & Dragsted, L. O. Diet-derived microbial metabolites in health and disease. *Nutr. Bull.* <https://doi.org/10.3390/nu11040923> (2019).
24. Desai, M. S. et al. A dietary fiber-deprived gut microbiota degrades the colonic mucus barrier and enhances pathogen susceptibility. *Cell* <https://doi.org/10.1016/j.cell.2016.10.043> (2016).
25. Voragen, A. G. J., Coenen, G. J., Verhoef, R. P. & Schols, H. A. Pectin, a versatile polysaccharide present in plant cell walls. *Struct. Chem.* **20**, 263–275 (2009).
26. Sun, Y. et al. Low-methoxyl lemon pectin attenuates inflammatory responses and improves intestinal barrier integrity in caerulein-induced experimental acute pancreatitis. *Mol. Nutr. Food Res.* <https://doi.org/10.1002/mnfr.201600885> (2017).
27. Jiang, T. et al. Apple-derived pectin modulates gut microbiota, improves gut barrier function, and attenuates metabolic endotoxemia in rats with diet-induced obesity. *Nutrients* **152**, s814–s815 (2016).
28. Wilms et al. The impact of pectin supplementation on intestinal barrier function in healthy young adults and healthy elderly. *Nutrients* <https://doi.org/10.3390/nu11071554> (2019).
29. Vogt, L. M. et al. The impact of lemon pectin characteristics on TLR activation and T84 intestinal epithelial cell barrier function. *J. Funct. Foods* **22**, 398–407 (2016).
30. Sahasrabudhe, N. M. et al. Dietary fiber pectin directly blocks toll-like receptor 2-1 and prevents doxorubicin-induced ileitis. *Front. Immunol.* <https://doi.org/10.3389/fimmu.2018.00383> (2018).
31. Larsen, N. et al. Potential of pectins to beneficially modulate the gut microbiota depends on their structural properties. *Front. Microbiol.* **10**, 1–13 (2019).
32. Lara-Espinoza, C., Carvajal-Millán, E., Balandrán-Quintana, R., López-Franco, Y. & Rascón-Chu, A. Pectin and pectin-based composite materials: beyond food texture. *Molecules* <https://doi.org/10.3390/molecules23040942> (2018).
33. Voragen, A. G. J., Pilnik, W., Thibault, J. F., Axelos, M. A. V. & Renard, C. M. G. Pectins. in *Food Polysaccharides and Their Applications* (ed. Stephen, A.) (Marcel Dekker, Inc., 1995).
34. Thakur, B. R. et al. Chemistry and uses of pectin—A review chemistry and uses of pectin—a review. *Critical Rev. Food Sci. Nutr.* **37**, 47–73 (1997).
35. Daas, P. J. H., Meyer-Hansen, K., Schols, H. A., De Ruiter, G. A. & Voragen, A. G. J. Investigation of the non-esterified galacturonic acid distribution in pectin with endopolygalacturonase. *Carbohydr. Res.* **318**, 135–145 (1999).
36. O'Neill, M. A., Ishii, T., Albersheim, P. & Darvill, A. G. Rhamnogalacturonan II: structure and function of a borate cross-linked cell wall pectic polysaccharide. *Annu. Rev. Plant Biol.* **55**, 109–139 (2004).
37. Wikiera, A., Irla, M. & Mika, M. Health-promoting properties of pectin. *Postepy Hig. Med. Dosw.* **68**, 590–596 (2014).
38. Eiwegger, T. et al. Prebiotic oligosaccharides: in vitro evidence for gastrointestinal epithelial transfer and immunomodulatory properties. *Pediatr. Allergy Immunol.* **21**, 1179–1188 (2010).
39. Mowat, A. M. & Agace, W. W. Regional specialization within the intestinal immune system. *Nat. Rev. Immunol.* **14**, 667–685 (2014).
40. Jakobsson, H. E. et al. The composition of the gut microbiota shapes the colon mucus barrier. *EMBO Rep.* **16**, 164–177 (2015).
41. Hino, S. et al. Low-methoxyl pectin stimulates small intestinal mucin secretion irrespective of goblet cell proliferation and is characterized by Jejunum Muc2 upregulation in rats. *J. Nutr.* **143**, 34–40 (2013).
42. Peterson, L. W. & Artis, D. Intestinal epithelial cells: regulators of barrier function and immune homeostasis. *Nat. Rev. Immunol.* **14**, 141–153 (2014).
43. Jung, T. H., Park, J. H., Jeon, W. M. & Han, K. S. Butyrate modulates bacterial adherence on LS174T human colorectal cells by stimulating mucin secretion and MAPK signaling pathway. *Nutr. Res. Pr.* **9**, 343–349 (2015).
44. Bautista, M. V. et al. IL-8 regulates mucin gene expression at the post-transcriptional level in lung epithelial cells. *J. Immunol.* **183**, 2159–2166 (2009).
45. Faderl, M., Noti, M., Corazza, N. & Mueller, C. Keeping bugs in check: the mucus layer as a critical component in maintaining intestinal homeostasis. *IUBMB Life* **67**, 275–285 (2015).
46. Wang, H. et al. Rip2 is required for Nod2-mediated lysozyme sorting in Paneth cells. *J. Immunol.* **198**, 3727–3736 (2017).
47. Cheroutre, H., Lambolez, F. & Mucida, D. The light and dark sides of intestinal intraepithelial lymphocytes. *Nat. Rev. Immunol.* **11**, 445–456 (2011).
48. Okumura, R. & Takeda, K. Roles of intestinal epithelial cells in the maintenance of gut homeostasis. *Exp. Mol. Med.* <https://doi.org/10.1038/emmm.2017.20> (2017).
49. Dillon, A. & Lo, D. D. M cells: Intelligent engineering of mucosal immune surveillance. *Front. Immunol.* <https://doi.org/10.3389/fimmu.2019.01499> (2019).
50. Arrieta, M. C., Bistritz, L. & Meddings, J. B. Alterations in intestinal permeability. *Gut* **55**, 1512–1520 (2006).
51. Abreu, M. T. Toll-like receptor signalling in the intestinal epithelium: how bacterial recognition shapes intestinal function. *Nat. Rev. Immunol.* **10**, 131–144 (2010).
52. Chen, G. et al. G protein-coupled receptor 109A and host microbiota modulate intestinal epithelial integrity during sepsis. *Front. Immunol.* <https://doi.org/10.3389/fimmu.2018.02079> (2018).
53. Ahluwalia, B., Magnusson, M. K. & Öhman, L. Mucosal immune system of the gastrointestinal tract: maintaining balance between the good and the bad. *Scand. J. Gastroenterol.* **52**, 1185–1193 (2017).
54. Gordon, S. Pattern recognition receptors: doubling up for the innate immune response. *Cell* **111**, 927–930 (2002).
55. Rescigno, M. et al. Dendritic cells express tight junction proteins and penetrate gut epithelial monolayers to sample bacteria. *Nat. Immunol.* **2**, 361–367 (2001).
56. Joeris, T., Müller-Luda, K., Agace, W. W. & Mowat, A. M. I. Diversity and functions of intestinal mononuclear phagocytes. *Mucosal Immunol.* **10**, 845–864 (2017).
57. Pezoldt, J., Yang, J., Zou, M. & Huehn, J. Microbiome and gut immunity: T cells. *Gut Microbiom. Health Dis.* https://doi.org/10.1007/978-3-319-90545-7_9 (2018).

58. Masahata, K. et al. Generation of colonic IgA-secreting cells in the caecal patch. *Nat. Commun.* <https://doi.org/10.1038/ncomms4704> (2014).
59. Hammerschmidt, S. I. et al. Stromal mesenteric lymph node cells are essential for the generation of gut-Homing T cells in vivo. *J. Exp. Med.* **205**, 2483–2490 (2008).
60. Jaensson-Gyllenbäck, E. et al. Bile retinoids imprint intestinal CD103+ dendritic cells with the ability to generate gut-tropic T cells. *Mucosal Immunol.* **4**, 438–447 (2011).
61. Agace, W. W. & McCoy, K. D. Regionalized development and maintenance of the intestinal adaptive immune landscape. *Immunity* <https://doi.org/10.1016/j.immuni.2017.04.004> (2017).
62. Mann, E. R. et al. Compartment-specific immunity in the human gut: Properties and functions of dendritic cells in the colon versus the ileum. *Gut* <https://doi.org/10.1136/gutjnl-2014-307916> (2016).
63. McRorie, J. W. & McKeown, N. M. Understanding the physics of functional fibers in the gastrointestinal tract: an evidence-based approach to resolving enduring misconceptions about insoluble and soluble fiber. *J. Acad. Nutr. Diet.* **17**, 251–264 (2017).
64. Popov, S. V. et al. Preventive effect of a peptic polysaccharide of the common cranberry *Vaccinium oxycoccos* L. on acetic acid-induced colitis in mice. *World J. Gastroenterol.* **12**, 6646–6651 (2006).
65. Sriamornsak, P., Wattanakorn, N. & Takeuchi, H. Study on the mucoadhesion mechanism of pectin by atomic force microscopy and mucin-particle method. *Carbohydr. Polym.* **79**, 54–59 (2010).
66. Maria-Ferreira, D. et al. Rhamnogalacturonan, a chemically-defined polysaccharide, improves intestinal barrier function in DSS-induced colitis in mice and human Caco-2 cells. *Sci. Rep.* <https://doi.org/10.1038/s41598-018-30526-2> (2018).
67. Liu, L. S., Fishman, M. L., Hicks, K. B. & Kende, M. Interaction of various pectin formulations with porcine colonic tissues. *Biomaterials* **26**, 5907–5916 (2005).
68. Cario, E., Gerken, G. & Podolsky, D. K. Toll-Like receptor 2 controls mucosal inflammation by regulating epithelial barrier function. *Gastroenterology* **132**, 1359–1374 (2007).
69. Rabbani, G. H. et al. Green banana and pectin improve small intestinal permeability and reduce fluid loss in Bangladeshi children with persistent diarrhea. *Dig. Dis. Sci.* **49**, 475–484 (2004).
70. Ishisono, K., Yabe, T. & Kitaguchi, K. Citrus pectin attenuates endotoxin shock via suppression of Toll-like receptor signaling in Peyer's patch myeloid cells. *J. Nutr. Biochem.* **50**, 38–45 (2017).
71. do Nascimento, G. E., Winnischofer, S. M. B., Ramirez, M. I., Iacomini, M. & Cordeiro, L. M. C. The influence of sweet pepper pectin structural characteristics on cytokine secretion by THP-1 macrophages. *Food Res. Int.* **50**, 588–594 (2017).
72. Amorim, J. C., Vriesmann, L. C., Petkowicz, C. L. O., Martinez, G. R. & Noleto, G. R. Modified pectin from *Theobroma cacao* induces potent pro-inflammatory activity in murine peritoneal macrophage. *Int. J. Biol. Macromol.* **92**, 1040–1048 (2016).
73. Inngjerdigen, M. et al. Pectic polysaccharides from *Biophytum petersianum* Klotzsch, and their activation of macrophages and dendritic cells. *Glycobiology* **18**, 1074–1084 (2017).
74. Sakurai, M. H., Matsumoto, T., Kiyohara, H. & Yamada, H. Detection and tissue distribution of anti-ulcer peptic polysaccharides from *Bupleurum falcatum* by polyclonal antibody. *Planta Med.* **62**, 341–346 (1996).
75. De Jesus, M., Ostroff, G. R., Levitz, S. M., Bartling, T. R. & Mantis, N. J. A population of langerin-positive dendritic cells in murine Peyer's patches involved in sampling β -glucan microparticles. *PLoS ONE* <https://doi.org/10.1371/journal.pone.0091002> (2014).
76. Suh, H. J. et al. Peyer's patch-mediated intestinal immune system modulating activity of pectic-type polysaccharide from peel of Citrus unshiu. *Food Chem.* **138**, 1079–1086 (2013).
77. Popov, S. V. & Ovodov, Y. S. Polypotency of the immunomodulatory effect of pectins. *Biochem* **78**, 823–835 (2013).
78. Kamada, N. & Núñez, G. Regulation of the immune system by the resident intestinal bacteria. *Gastroenterology* **146**, 1477–1488 (2014).
79. do Nascimento, G. E., Winnischofer, S. M. B., Ramirez, M. I., Iacomini, M. & Cordeiro, L. M. C. The influence of sweet pepper pectin structural characteristics on cytokine secretion by THP-1 macrophages. *Food Res. Int.* **102**, 588–594 (2017).
80. Takeuchi, O. & Akira, S. Pattern recognition receptors and inflammation. *Cell* **140**, 805–820 (2010).
81. Sahasrabudhe, N. M. et al. Endo-glucanase digestion of oat β -Glucan enhances Dectin-1 activation in human dendritic cells. *J. Funct. Foods* <https://doi.org/10.1016/j.jff.2015.11.0377> (2016).
82. Vogt, L. M. et al. Immune modulation by different types of β 2 \rightarrow 1-fructans is toll-like receptor dependent. *PLoS ONE* <https://doi.org/10.1371/journal.pone.0068367> (2013).
83. Gao, X. et al. The inhibitory effects of a rhamnogalacturonan I (RG-I) domain from ginseng Pectin on galectin-3 and its structure-activity relationship. *J. Biol. Chem.* **288**, 33953–33965 (2013).
84. Sciacchitano, S. et al. Galectin-3: one molecule for an alphabet of diseases, from A to Z. *Int. J. Mol. Sci.* <https://doi.org/10.3390/ijms19020379> (2018).
85. Lepur, A. et al. Galectin-3 endocytosis by carbohydrate independent and dependent pathways in different macrophage like cell types. *Biochim. Biophys. Acta Gen. Subj.* **1820**, 804–818 (2012).
86. Glinsky, V. V. & Raz, A. Modified citrus pectin anti-metastatic properties: one bullet, multiple targets. *Carbohydr. Res.* **344**, 1788–1791 (2009).
87. Prado, S. B. R. Do et al. Ripening-induced chemical modifications of papaya pectin inhibit cancer cell proliferation. *Sci. Rep.* <https://doi.org/10.1038/s41598-017-16709-3> (2017).
88. Diaz-Alvarez, L. & Ortega, E. The many roles of galectin-3, a multifaceted molecule, in innate immune responses against pathogens. *Mediators Inflamm.* <https://doi.org/10.1155/2017/9247574> (2017).
89. Yiu, J. H. C., Dorweiler, B. & Woo, C. W. Interaction between gut microbiota and toll-like receptor: from immunity to metabolism. *J. Mol. Med.* **95**, 13–20 (2017).
90. Park, S. N. et al. Rhamnogalacturonan II is a Toll-like receptor 4 agonist that inhibits tumor growth by activating dendritic cell-mediated CD8+ T cells. *Exp. Mol. Med.* <https://doi.org/10.1038/emm.2014.38> (2013).
91. Wang, H. et al. A homogalacturonan from *Hippophae rhamnoides* L. Berries enhance immunomodulatory activity through TLR4/MyD88 pathway mediated activation of macrophages. *Int. J. Biol. Macromol.* **107**, 1039–1045 (2018).
92. Liu, Y., Su, W. W., Wang, S. & Li, P. B. Naringin inhibits chemokine production in an LPS-induced RAW 264.7 macrophage cell line. *Mol. Med. Rep.* **6**, 1343–1350 (2012).
93. Chen, C. H. et al. Suppression of endotoxin-induced proinflammatory responses by citrus pectin through blocking LPS signaling pathways. *Biochem. Pharmacol.* **72**, 1001–1009 (2006).
94. Cui, J. et al. Dietary fibers from fruits and vegetables and their health benefits via modulation of gut microbiota. *Compr. Rev. Food Sci. Food Saf.* **95**, 50–60 (2019).
95. Macfarlane, G. T. & Macfarlane, S. Bacteria, colonic fermentation, and gastrointestinal health. *J. AOAC Int.* https://doi.org/10.5740/jaoacint.SGE_Macfarlane (2012).
96. Kim, C. H. Immune regulation by microbiome metabolites. *Immunology* **154**, 220–229 (2018).
97. Donohoe, D. R. et al. The Warburg effect dictates the mechanism of butyrate-mediated histone acetylation and cell proliferation. *Mol. Cell* **48**, 612–626 (2012).
98. Gonçalves, P. & Martel, F. Regulation of colonic epithelial butyrate transport: focus on colorectal cancer. *Porto Biomed. J.* **1**, 83–91 (2016).
99. Rhoades, J. et al. Oligosaccharide-mediated inhibition of the adhesion of pathogenic *Escherichia coli* strains to human gut epithelial cells in vitro. *J. Food Prot.* **71**, 2272–2277 (2008).
100. Larsen, N., Cahú, T. B., Isay Saad, S. M., Blennow, A. & Jespersen, L. The effect of pectins on survival of probiotic *Lactobacillus* spp. in gastrointestinal juices is related to their structure and physical properties. *Food Microbiol.* **74**, 11–20 (2018).
101. Onumpai, C., Kolida, S., Bonnin, E. & Rastall, R. A. Microbial utilization and selectivity of pectin fractions with various structures. *Appl. Environ. Microbiol.* **77**, 5747–5754 (2011).
102. Shinohara, K., Ohashi, Y., Kawasumi, K., Terada, A. & Fujisawa, T. Effect of apple intake on fecal microbiota and metabolites in humans. *Anaerobe* **16**, 510–515 (2010).
103. Gómez, B., Gullón, B., Yáñez, R., Schols, H. & Alonso, J. L. Prebiotic potential of pectins and pectic oligosaccharides derived from lemon peel wastes and sugar beet pulp: a comparative evaluation. *J. Funct. Foods* **20**, 108–121 (2016).
104. Li, W., Zhang, K. & Yang, H. Pectin alleviates high fat (Lard) diet-induced nonalcoholic fatty liver disease in mice: possible role of

- short-chain fatty acids and gut microbiota regulated by pectin. *J. Agric. Food Chem.* **66**, 8015–8025 (2018).
105. Licht, T. R. et al. Effects of apples and specific apple components on the cecal environment of conventional rats: Role of apple pectin. *BMC Microbiol.* <https://doi.org/10.1186/1471-2180-10-13> (2010).
 106. Paturi, G., Butts, C. A., Stoklosinski, H., Herath, T. D. & Monro, J. A. Short-term feeding of fermentable dietary fibres influences the gut microbiota composition and metabolic activity in rats. *Int. J. Food Sci. Technol.* <https://doi.org/10.1002/mnfr.201600186> (2017).
 107. Tian, L. et al. Effects of pectin on fermentation characteristics, carbohydrate utilization, and microbial community composition in the gastrointestinal tract of weaning pigs. *Mol. Nutr. Food Res.* <https://doi.org/10.1002/mnfr.201600186> (2016).
 108. Martens, E. C. et al. Recognition and degradation of plant cell wall polysaccharides by two human gut symbionts. *PLoS Biol.* <https://doi.org/10.1371/journal.pbio.1001221> (2011).
 109. Grondin, J. M., Tamura, K., Déjean, G., Abbott, D. W. & Brumer, H. Polysaccharide utilization loci: fueling microbial communities. *J. Bacteriol.* <https://doi.org/10.1128/JB.00860-16> (2017).
 110. Flint, H. J., Duncan, S. H., Scott, K. P. & Louis, P. Interactions and competition within the microbial community of the human colon: Links between diet and health: minireview. *Environ. Microbiol.* **9**, 1101–1111 (2007).
 111. Olano-Martin, E., Gibson, G. R. & Rastall, R. A. Comparison of the in vitro bifidogenic properties of pectins and pectic-oligosaccharides. *J. Appl. Microbiol.* **93**, 505–511 (2002).
 112. Dongowski, G., Lorenz, A. & Proll, J. The degree of methylation influences the degradation of pectin in the intestinal tract of rats and in vitro. *J. Nutr.* **132**, 1935–1944 (2002).
 113. Mao, G. et al. Depolymerized RG-I enriched pectin from citrus segment membrane modulates gut microbiota, increases SCFAs production, promotes the growth of *Bifidobacterium* spp., *Lactobacillus* spp. and *Faecalibaculum* spp. *Food Funct.* <https://doi.org/10.1039/C9FO01534E> (2019).
 114. Levy, M., Thaiss, C. A. & Elinav, E. Metabolites: messengers between the microbiota and the immune system. *Genes Dev.* **30**, 1589–1597 (2016).
 115. Den Besten, G. et al. The role of short-chain fatty acids in the interplay between diet, gut microbiota, and host energy metabolism. *J. Lipid Res.* **54**, 2325–2340 (2013).
 116. Gulfi, M., Arrigoni, E. & Amadò, R. Influence of structure on in vitro fermentability of commercial pectins and partially hydrolysed pectin preparations. *Carbohydr. Polym.* **59**, 247–255 (2005).
 117. Tian, L. et al. Effects of pectin supplementation on the fermentation patterns of different structural carbohydrates in rats. *Mol. Nutr. Food Res.* **60**, 2256–2266 (2016).
 118. Lu, L. & Walker, W. A. Pathologic and physiologic interactions of bacteria with the gastrointestinal epithelium. *Am. J. Clin. Nutr.* **73**, 1124s–1130s (2001).
 119. Olano-Martin, E., Rimbach, G. H., Gibson, G. R. & Rastall, R. A. Pectin and pectic-oligosaccharides induce apoptosis in in vitro human colonic adenocarcinoma cells. *Anticancer Res.* **23**, 341–346 (2003).
 120. Lee, J. H. et al. Pectin-like acidic polysaccharide from *Panax ginseng* with selective antiadhesive activity against pathogenic bacteria. *Carbohydr. Res.* **341**, 1154–1163 (2006).
 121. Di, R. et al. Pectic oligosaccharide structure-function relationships: prebiotics, inhibitors of *Escherichia coli* O157:H7 adhesion and reduction of Shiga toxin cytotoxicity in HT29 cells. *Food Chem.* **227**, 245–254 (2017).
 122. Wilkowska, A. et al. Structurally different pectic oligosaccharides produced from apple pomace and their biological activity in vitro. *Foods* <https://doi.org/10.3390/foods8090365> (2019).
 123. Ganan, M. et al. Inhibition by pectic oligosaccharides of the invasion of undifferentiated and differentiated Caco-2 cells by *Campylobacter jejuni*. *Int. J. Food Microbiol.* **137**, 181–185 (2010).
 124. Parkar, S. G. et al. Gut health benefits of kiwifruit pectins: comparison with commercial functional polysaccharides. *J. Funct. Foods* **2**, 210–218 (2010).
 125. Kavanaugh, D. W. et al. Exposure of *Bifidobacterium longum* subsp. *infantis* to milk oligosaccharides increases adhesion to epithelial cells and induces a substantial transcriptional response. *PLoS ONE* <https://doi.org/10.1371/journal.pone.0067224.g001> (2013).
 126. Shoaf-Sweeney, K. D. & Hutkins, R. W. Adherence, anti-adherence, and oligosaccharides: preventing pathogens from sticking to the host. *Adv. Food Nutr. Res.* **55**, 101–161 (2008).
 127. Ishiono, K., Mano, T., Yabe, T. & Kitaguchi, K. Dietary fiber pectin ameliorates experimental colitis in a neutral sugar side chain-dependent manner. *Front. Immunol.* <https://doi.org/10.3389/fimmu.2019.02979> (2019).
 128. Fransen, F. et al. β 2 \rightarrow 1-fructans modulate the immune system in vivo in a microbiota-dependent and -independent fashion. *Front. Immunol.* <https://doi.org/10.3389/fimmu.2017.00154> (2017).
 129. Rubert, J. et al. Intestinal organoids: a tool for modelling diet-microbiome-host interactions. *Trends Endocrinol. Metab.* **1576**, 183–194 (2019).
 130. Tap, J. et al. Gut microbiota richness promotes its stability upon increased dietary fibre intake in healthy adults. *Environ. Microbiol.* **17**, 4954–4964 (2015).
 131. Hasan, N. & Yang, H. Factors affecting the composition of the gut microbiota, and its modulation. *PeerJ* <https://doi.org/10.7717/peerj.7502> (2019).
 132. Hallert, C. et al. Increasing fecal butyrate in ulcerative colitis patients by diet: controlled pilot study. *Inflamm. Bowel Dis.* **9**, 116–121 (2003).
 133. Hanai, H. et al. Germinated barley foodstuff prolongs remission in patients with ulcerative colitis. *Int. J. Mol. Med.* **13**, 643–647 (2004).
 134. Sugihara, K., Morhardt, T. L. & Kamada, N. The role of dietary nutrients in inflammatory bowel disease. *Front. Immunol.* <https://doi.org/10.3389/fimmu.2018.03183> (2019).
 135. Sonis, S. T. The pathobiology of mucositis. *Nat. Rev. Cancer* **4**, 277–284 (2004).