

# Bosutinib: a SRC–ABL tyrosine kinase inhibitor for treatment of chronic myeloid leukemia

Fuad El Rassi  
Hanna Jean Khoury

Division of Hematology, Department of Hematology and Medical Oncology, the Winship Cancer Institute at Emory University, Atlanta, Georgia, USA

**Abstract:** Bosutinib is one of five tyrosine kinase inhibitors commercially available in the United States for the treatment of chronic myeloid leukemia. This review of bosutinib summarizes the mode of action, pharmacokinetics, efficacy and safety data, as well as the patient-focused perspective through quality-of-life data. Bosutinib has shown considerable and sustained efficacy in chronic myeloid leukemia, especially in the chronic phase, with resistance or intolerance to prior tyrosine kinase inhibitors. Bosutinib has distinct but manageable adverse events. In the absence of T315I and V299L mutations, there are no absolute contraindications for the use of bosutinib in this patient population.

**Keywords:** bosutinib, chronic myeloid leukemia, treatment, review, SRC-ABL kinase inhibitor, clinical activity

## Introduction

Chronic myeloid leukemia (CML) is a clonal myeloproliferative stem cell disorder characterized by the presence of a signature hybrid oncogene, the BCR–ABL.<sup>1</sup> The Philadelphia chromosome (Ph+) results from a reciprocal translocation between chromosome 9 and chromosome 22 that juxtaposes the two genes *BCR* and *ABL* and drives the leukemogenesis in CML.<sup>2</sup> The *ABL* gene encodes for a nonreceptor tyrosine kinase that becomes deregulated and constitutively active after the juxtaposition of BCR. BCR–ABL is central in controlling downstream pathways involved in cell proliferation, regulation of cellular adhesion, and apoptosis.<sup>2</sup> The understanding of the importance of this kinase activity in the pathophysiology of CML led to the development of tyrosine kinase inhibitors (TKI) that specifically target BCR–ABL. These agents became the mainstay of modern therapy in CML.<sup>3</sup>

CML has a triphasic clinical course, and the majority of patients (~80%) are diagnosed during the early phase or the chronic phase (CP). However, and without effective treatment, CML invariably progresses to the advanced phases of the disease – the accelerated phase (AP) and the blast phase (BP). BP CML is a lethal refractory secondary leukemia with a short predicted survival.<sup>2</sup> CML is a relatively rare disorder occurring in 1.5 per 100,000;<sup>4</sup> however, and given the dramatic progress the therapeutic arena has witnessed in recent years, the prevalence of CML is increasing, and it is projected to increase further in the coming years.<sup>5</sup> Indeed, the number of people living with CML has doubled since 2001,<sup>6</sup> and with an estimated survival rate of 90% at 5 years and an annual mortality rate of 2%, the prevalence of CML in 20 years is projected to be 150,000 to 250,000 cases in the United States.<sup>5</sup>

Correspondence: Hanna Jean Khoury  
Emory University School of Medicine,  
1365C Clifton Road NE, Room C1152,  
Atlanta, 30322, GA, USA  
Tel +1 404 778 3932  
Fax +1 404 778 4755  
Email hkoury@emory.edu

The goal of therapy in CML is the eradication of BCR–ABL. Eradication of BCR–ABL is associated with improvements in survival and a reduction in the risks of transformation to the advanced phases of the disease.<sup>7,8</sup> This goal was not achieved with busulfan or hydroxyurea, but it was historically first achieved, in the absence of allogeneic stem cell transplantation (alloSCT), with interferon alpha (IFN- $\alpha$ ).<sup>8,9</sup> Indeed, survival of patients who achieve a complete cytogenetic remission with IFN- $\alpha$  is excellent and is close to 70% at 10 years. Unfortunately, the tolerability of IFN-based therapies and the low response rates (less than 30%) have limited the broad applicability of this treatment.<sup>10</sup> Although alloSCT is a curative treatment, identification of a suitable donor, the age and comorbidities of the recipient, as well as the morbidity and mortality associated with this procedure, are the major limiting factors. The safety and tolerability, as well as the high response rates associated with TKI therapy, offered CML patients a new alternative that revolutionized their outcomes.<sup>5,11</sup>

Presently, five TKIs are commercially available in the United States, four of which are also available in many other countries, for the treatment of CML: imatinib (IM), Gleevec,<sup>®</sup> Novartis Pharmaceuticals Corporation; dasatinib (DAS), Sprycel,<sup>®</sup> Bristol-Myers Squibb Company, Princeton, NJ, USA; nilotinib (NIL), Tassigna,<sup>®</sup> Novartis Pharmaceuticals Corporation; bosutinib (BOS), Bosulif,<sup>®</sup> Pfizer, Inc, New York, NY, USA; and ponatinib (PON), Iclusig,<sup>®</sup> Ariad Pharmaceuticals, Cambridge, MA, USA.

IM was the first approved TKI by the US Food and Drug Administration (FDA) for CML and other Ph+ leukemias in 2001.<sup>12</sup> DAS and NIL were approved in 2006 and 2007, respectively, for IM-resistance or intolerance<sup>13,14</sup> and later approved as front-line therapy in 2010. In 2012, both BOS and PON were granted FDA approval in the US for resistant CML.<sup>15,16</sup> BOS is a SRC–ABL inhibitor approved in the US for the treatment of chronic, accelerated, or blast phase Ph+ CML in adult patients with resistance or intolerance to prior therapy. This review will focus on pharmacology, mode of action, pharmacokinetics, safety, and efficacy of BOS for the treatment of CML.

## Review of pharmacology, mode of action, pharmacokinetics of BOS

BOS is a 4-anilino-3-quinolinecarbonitrile. The molecular weight is 548.46 grams per mole (monohydrate); 530.46 grams per mole (anhydrous). The molecular formula is  $C_{26}H_{29}Cl_2N_5O_3 \times H_2O$ ; and the chemical formula is 3-Quinolinecarbonitrile,

4-[(2,4-dichloro-5-methoxyphenyl)amino]-6-methoxy-7-[3-(4-methyl-1-piperazinyl) propoxy]-, hydrate (1:1) 4-[(2,4-dichloro-5-methoxyphenyl)amino]-6-methoxy-7-[3-(4-methyl-1-piperazinyl) propoxy]-3-quinolinecarbonitrile monohydrate 4-[(2,4-Dichloro-5-methoxyphenyl)amino]-6-methoxy-7-[3-(4-methylpiperazin-1-yl) propoxy]quinoline-3-carbonitrile monohydrate. The molecular structure of BOS is shown in Figure 1.<sup>16</sup>

## Mode of action

BOS inhibits BCR–ABL kinase, as well as the SRC-family kinases including SRC, Lyn, and Hck. In mice, treatment with BOS inhibited growth of IM-resistant myeloid tumors.<sup>17,18</sup>

## Pharmacokinetics

Following a single oral dose of BOS 500 mg with food, median time-to-peak concentration ( $T_{max}$ ) was 4–6 hours. BOS exhibited linear kinetics with dose proportional increases in area under the curve (AUC) and a maximum concentration ( $C_{max}$ ) 200 and up to 800 mg. After 15 daily doses of BOS 500 mg,  $C_{max}$  was 200 ( $\pm 12$ ) ng/mL, and the AUC was 3650 ( $\pm 425$ ) ng/mL. The volume of distribution was 6080 ( $\pm 1230$ ) L. BOS binds in a nonconcentration-dependent pattern to plasma proteins, both in vitro (94%) and in vivo (96%).<sup>19</sup> The mean terminal phase elimination half-life ( $t_{1/2}$ ) was 22.5 ( $\pm 1.7$ ) hours, and the mean clearance is 189 ( $\pm 48$ ) L/h. BOS is primarily metabolized by cytochrome P450 (CYP)-3A4, and inactive plasma metabolites include the oxydechlorinated BOS (19% of parent exposure) and N-desmethylated BOS (25% of parent exposure). BOS N-oxide is a minor circulating metabolite.<sup>16</sup> BOS is excreted in feces with only 1% excreted in the urine.<sup>19</sup>

In a dedicated hepatic impairment trial, a single dose of BOS 200 mg was administered with food to hepatically impaired volunteers (Child–Pugh classes A, B, and C), and showed increased  $C_{max}$  by 1.5- to 2.4-fold, and a 1.9- to 2.3-fold increased AUC.<sup>16</sup> CYP3A inhibitors, such as ketoconazole, increase BOS  $C_{max}$  and AUC 5.2-fold and 8.6-fold, respectively.<sup>16</sup> CYP3A inducers, such as rifampicin, decrease

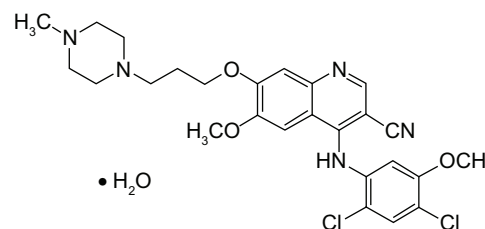


Figure 1 Molecular structure of bosutinib.<sup>16</sup>

BOS  $C_{max}$  and AUC by 86% and 94%, respectively. When given with pH-altering medications, such as lansoprazole,  $C_{max}$  and AUC decrease by 46% and 26%, respectively.<sup>16</sup>

## Clinical trials addressing efficacy of BOS

### BOS in previously treated CML

In a Phase 1–2 study, BOS was initially administered to patients with IM-resistant or IM-intolerant CML to determine the Phase 2-recommended dose (P2RD) (Phase 1) and to evaluate the safety and efficacy of this dose (Phase 2). In the dose-escalation part of the study, BOS at 500 mg once daily dosing was considered the P2RD, as skin toxicity was the limiting dose at 600 mg per day. The study enrolled 288 patients with IM-resistant (200) or IM-intolerant (88) CML, and as NIL and DAS became commercially available, the eligibility criteria were modified to include patients previously treated with these agents. At 24 weeks, 86% of CP IM-resistant and 85% IM-intolerant CML patients achieved CHR, which was sustained in 72% and 87%, respectively. Major cytogenetic remission (MCyR, defined as a decrease in Ph+ metaphases to  $\leq 35\%$ ) was achieved in 54% of CP IM-resistant and 49% of IM-intolerant patients and maintained in 72% CP IM-resistant and 92% of IM-intolerant patients, of which 41% each had a complete cytogenetic response (CCyR)<sup>20</sup> (Table 1). The overall survival (OS) at 2 years was 88% and 98%, with a progression-free survival (PFS) of 72% and 89% for CP IM-resistant and IM-intolerant patients, respectively. BOS was also effective when administered as a third-line agent to 119 CP CML patients with resistance or intolerance to IM, DAS, or NIL,<sup>21</sup> of which 64%–81% achieved CHR, 32%–51% MCyR that was complete in 23%–41%. The highest response rates were observed in the IM- and DAS-intolerant, while IM- and DAS-resistant patients had the lowest responses. PFS was 75%, and OS was 84% at 2 years (Table 1).

### BOS for newly diagnosed CML

A Phase 3 trial compared head-to-head BOS to IM in newly diagnosed CP-CML (in the Bosutinib Efficacy and Safety in Newly Diagnosed Chronic Myeloid Leukemia [BELA] trial).<sup>22</sup> A total of 502 patients was randomly assigned 1:1 to BOS 500 mg per day or IM 400 mg per day. The study did not achieve the primary end point, given that the CCyR rate at 12 months was not different in BOS (70%; 95% confidence interval [CI]; 64%–76%) versus IM-treated patients (68%; 95% CI; 62%–74%). The major molecular response (MMR) rate at 12 months was higher with BOS (41%; 95% CI; 35%–47%) as compared with IM (27%; 95% CI; 22%–33%), and time to achieve CCyR and MMR was faster with BOS compared with IM (12.9 versus 24.6 weeks and 37.1 versus 72.3 weeks, respectively).

Transformations to AP or BP CML as well as CML-related deaths were comparable in both arms of the study (2% versus 4%). BOS was therefore not proposed for approval for the upfront treatment of the newly diagnosed CP CML patients.

### BOS for advanced phases CML

The Phase 1–2 study included 134 patients with 63 AP, 48 BP CML, and 23 Ph+ acute lymphoblastic leukemia (ALL).<sup>23</sup> Median follow-up was 8.3 months. Prior therapy in addition to IM included IFN- $\alpha$ , DAS, NIL, and alloSCT. Overall hematological response (which included CHR, return to a second CP, and no evidence of leukemia) was achieved in 64% of AP, 32% of BP, and 25% of Ph+ ALL patients. CCyR was achieved in 33% of AP, 29% of BP, and 100% of the two evaluable Ph+ ALL patients. PFS was 11.6 months for AP CML versus 7.8 months and 2.7 months for BP CML and Ph+ ALL, respectively.

### Safety and tolerability

BOS is overall well-tolerated and, similar to other TKIs, is associated with both specific and nonspecific side effects.

**Table 1** Efficacy of bosutinib as a second or third-line treatment for CP CML

Response	IM-resistant (n = 200)	IM-intolerant (n = 88)	IM + DAS resistant (n = 38)	IM + DAS intolerant (n = 50)	IM + NIL resistant (n = 27)	IM + NIL + DAS (n = 4)
Cytogenetic response (%)						
Sample size	186	80	36	50	25	4
MCyR	100 (54)	33 (41)	12 (33)	21 (48)	10 (39)	2 (50)
CCyR	76 (41)	33 (41)	7 (19)	19 (43)	7 (27)	2 (50)
Hematologic response (%)						
Sample size	199	88	37	49	25	4
CHR	172 (86)	75 (85)	23 (62)	39 (80)	19 (76)	3 (75)

**Note:** data obtained from Cortes et al.<sup>20</sup> and Khoury et al.<sup>21</sup>

**Abbreviations:** IM, imatinib; BOS, bosutinib; DAS, dasatinib; NIL, nilotinib; MCyR, major cytogenetic response; CCyR, complete cytogenetic response; CHR, complete hematologic response.

Gastrointestinal adverse events (AEs) are common (81% diarrhea; 43% nausea; 32% vomiting), and specific side effects are associated with the use of BOS.<sup>21</sup> These gastrointestinal AEs are often Grades 1–2 (90%); have an early onset (median 1.5 days for diarrhea; nausea, 3.5 days; vomiting, 19.5 days, respectively); are usually of short duration (median duration, 2 days); and are self-limited. Diarrhea is effectively managed with antidiarrheal agents, such as loperamide or diphenoxylate/atropine. In the Phase 1–2 trial, dose interruptions and reductions occurred in 15% and 6%, respectively. Rechallenging after temporary interruption of BOS was successful; there was no recurrence of diarrhea in 95%. Diarrhea led to BOS discontinuation in 3%.<sup>20</sup> Elevation of alanine aminotransferase (ALT) and elevation of aspartate aminotransferase (AST) occurs in 10%–13% and is Grades 1–2 in 90%, Grade 3 and Grade 4 in 10%.<sup>21</sup> These ALT and AST elevations tend to occur in the first month after initiation of BOS (median 21.5 and 29 days, respectively),<sup>21</sup> are relatively short-lived (median 15 and 9 days, respectively), and have led to dose reductions, interruptions, or discontinuation (1%–3%) in the Phase 1–2 trials. However, among patients who required temporary dose interruption for ALT and/or AST elevations and were subsequently rechallenged with BOS, 90% either did not have a recurrence of ALT/AST events or had a recurrence but did not require permanent discontinuation of BOS.

Skin rash occurred in 22% of patients and resolved with time and required topical supportive care.<sup>21</sup> Overall, 10% of patients experienced Grade 3–4 skin toxicity. Skin manifestations include: macular, papular, and pruritic rash, acne, allergic dermatitis, folliculitis, and skin exfoliation.<sup>20</sup>

Similar to what is observed with other TKIs, myelosuppression presenting as pancytopenia or single lineage cytopenia is common in BOS-treated patients. Of note, the patient population enrolled in the Phase 1–2 trial had baseline Grade 3–4 hematologic laboratory abnormalities prior to initiation of BOS (thrombocytopenia 31%; neutropenia, 25%; anemia 16%), which affects the interpretation of the reported incidence from this trial. Thrombocytopenia represented the most common Grade 3–4 AE and Grade 3–4 laboratory abnormality (24%).<sup>20</sup> The median time to myelosuppression was 22 days, and median duration was 14 days. Myelosuppression was managed primarily with dose modifications, with 48% undergoing temporary interruption and 33% having dose reduction. Myelosuppression led to discontinuation of treatment in 6%.

Fluid retention is rare, but it has been reported in BOS-treated patients manifesting with pleural effusion (8%, Grade 3–4 in 2%), and less commonly pericardial effusion,

pulmonary edema, or peripheral edema. Pleural effusion has late onset (median 468 days), and a median duration of 19 days. In the Phase 1–2 trial, pleural effusion led to dose interruptions in 43% and to dose reductions in 17%. Only 2 (<1%) patients discontinued BOS due to pleural effusions.<sup>21</sup> Among patients who experienced pleural effusion during BOS treatment, 38% had a prior history of pleural effusion and 30% attributed prior TKI discontinuation to pleural effusion (85% had effusions with DAS).

Other nonspecific AEs associated with BOS treatment include fatigue (24%), cardiac events (14%), muscle spasms (3%), musculoskeletal pain (3%), creatine kinase elevations (2%), and myalgias (5%).<sup>20</sup>

## Risk factors for development of AE

Contrary to the gastrointestinal AEs, the hematologic AEs associated with BOS treatment are more common among advanced phase patients (57% versus 34%). Additionally, in the Phase 1–2 trial, dose modifications due to hematological AEs were more common in the IM-intolerant (83%) patients as compared to IM-resistant patients (65%), leading to more drug interruptions (57% versus 44%).<sup>24</sup> Compared with younger patients, vomiting, constitutional symptoms, cardiac events, pleural effusions, and dyspnea are reported more frequently among the older patients. In contrast, liver function test elevation and abdominal pain were more common in younger patients. Grade 3–4 hematologic abnormalities were generally similar between age groups. Older patients were more likely to undergo treatment modifications or to discontinue BOS due to an AE.

## Activity of BOS in the presence of ABL domain mutation

ABL kinase domain mutation can be crucial in directing therapy in the CML patient with resistance to first or second generation TKIs. In the Phase 1–2 trial, clinical activity of BOS was observed across baseline ABL kinase domain mutations except when T315I and V299L were detected. BOS is active despite the presence of mutations conferring resistance to DAS (F317L) or NIL (Y253F/H, E255K/V, and F359C/I/SV)(Figure 2).<sup>25,26</sup> The most common emerging mutations during BOS therapy are T315I and V299L, and all patients who developed these mutations had progressive disease.<sup>25</sup> Overall, CHR and MCyR rates are similar among CP patients with and without detectable mutations; however, the presence of a mutation negatively impacts response rates in advanced phases of CML and Ph+ ALL (CHR, 17% versus 39%; MCyR, 24% versus 37%).<sup>25</sup>

		IC-50 values (nM)				
		IM	BOS	DAS	NIL	PON
Parental		5683	1594	>100	679.9	>1000
WT		527	41.6	1.8	17.7	2.1
		IC-50 values (nM)				
		IM	BOS	DAS	NIL	PON
P-loop	M244V	1.3	0.8	1.9	1.2	3.2
	L248R	22.2	18.4	12.3	29.9	6.2
	L248V	3.5	3.5	5.1	2.8	3.4
	G250E	6.9	4.3	4.4	4.6	6.0
	Q252H	1.4	0.8	3.1	2.6	6.1
	Y253F	3.6	1.0	1.6	3.2	3.7
	Y253H	13.2	0.5	2.5	32.2	2.6
	E255K	6.0	9.5	5.6	6.7	8.9
C-helix	E255V	17.0	5.5	3.4	10.3	4.9
	D276G	2.2	0.6	1.4	2.0	2.1
	E279K	3.6	1.0	1.6	2.0	3.0
	E292L	0.7	1.1	1.3	1.8	2.0
ATP-binding region	V299L	1.5	26.1	8.7	1.3	0.6
	T315A	1.7	6.0	58.9	2.7	0.4
	T315I	17.5	45.4	75.0	39.4	3.0
	F317L	2.6	2.4	4.5	2.2	0.7
	F317V	0.5	9.2	21.0	0.5	2.3
A-loop	M343T	1.8	0.9	0.9	0.8	0.9
SH2 contact	M351T	1.8	0.7	0.9	0.4	1.2
Substrate-binding region	F359I	9.1	2.4	2.9	16.2	2.9
	F359V	2.9	0.9	1.5	5.2	4.4
A-loop	L384M	1.3	0.5	2.2	2.3	2.2
	H396P	2.4	0.4	1.1	2.4	1.4
	H396R	3.9	0.8	1.6	3.1	5.9
C-terminal lobe	F486S	8.1	2.3	3.0	1.9	2.1
	L248R + F359I	11.7	39.3	13.5	>56.2	17.7

Sensitive	<2
Moderately resistant	2.1–4
Resistant	4.1–10
Highly resistant	>10

**Figure 2** Comparison of in vitro sensitivity to IM, BOS, DAS, NIL, and PON of wild type and mutant BAF3 cell lines harboring clinically relevant ABL domain kinase mutations.

**Note:** Reprinted with permission from *Am J Hematol*. 2012;87:E125–E128. Three novel patient-derived BCR/ABL mutants show different sensitivity to second and third generation tyrosine kinase inhibitors. Redaelli S, Mologni L, Rostagno R, et al. Copyright © 2012, John Wiley and Sons.

**Abbreviations:** IC, inhibitory concentration; nM, nanomolar; WT, wild type; IM, imatinib; BOS, bosutinib; DAS, dasatinib; NIL, nilotinib; PON, ponatinib.

## Patient-focused perspectives

A health-related quality of life and the Functional Assessment of Cancer Therapy–Leukemia (FACT–Leu) evaluation were obtained prior to and throughout BOS treatment in the CP cohort of the Phase 1–2 trial.<sup>27</sup> Improvements on several FACT–Leu scales, including emotional well-being, overall FACT Leukemia Total and General scores were noted after the initiation of BOS. In particular, the patients' Physical Well-being and Functional Well-Being subscales, which measure issues such as lack of energy, presence of pain, ability to work, and ability to enjoy life, showed little impairment during BOS treatment.<sup>27</sup>

## Conclusion

BOS is an effective agent in the armamentarium against CML. In the absence of a specific ABL kinase domain mutation, health care providers have the luxury of selecting from an impressive portfolio of active drugs. Factors playing an important role in these therapeutic decisions include age,

comorbidities, dosing schedule, patient and family member preference, and last but not least, the physician's preference. BOS has shown considerable and sustained efficacy in patients with resistant or intolerant Ph+ leukemia, and has distinct but manageable adverse events. In the absence of T315I and V299L mutations, there are no absolute contraindications for the use of BOS in Ph+ leukemias.

## Disclosure

The authors report no conflicts of interest in this work.

## References

- Faderl S, Talpaz M, Estrov Z, O'Brien S, Kurzrock R, Kantarjian HM. The biology of chronic myeloid leukemia. *N Engl J Med*. 1999;341(3):164–172.
- Sawyers CL. Chronic myeloid leukemia. *N Engl J Med*. 1999;340(17):1330–1340.
- Kantarjian HM, Talpaz M, Giles F, O'Brien S, Cortes J. New insights into the pathophysiology of chronic myeloid leukemia and imatinib resistance. *Ann Intern Med*. 2006;145(12):913–923.
- Jemal A, Siegel R, Ward E, et al. Cancer statistics, 2006. *CA Cancer J Clin*. 2006;56(2):106–130.
- Huang X, Cortes J, Kantarjian H. Estimations of the increasing prevalence and plateau prevalence of chronic myeloid leukemia in the era of tyrosine kinase inhibitor therapy. *Cancer*. 2012;118(12):3123–3127.
- SEER Cancer Statistics Review, 1975–2006, [webpage on the Internet]. Bethesda, MD: National Cancer Institute; 2008; [cited 04/16/2012]. Available from: [http://seer.cancer.gov/csr/1975\\_2006/](http://seer.cancer.gov/csr/1975_2006/). Accessed 06/11/2013.
- Hughes TP, Hochhaus A, Branford S, et al. Long-term prognostic significance of early molecular response to imatinib in newly diagnosed chronic myeloid leukemia: an analysis from the International Randomized Study of Interferon and ST1571 (IRIS). *Blood*. 2010;116(19):3758–3765.
- Kloke O, Opalka B, Niederle N. Interferon alfa as primary treatment of chronic myeloid leukemia: long-term follow-up of 71 patients observed in a single center. *Leukemia*. 2000;14(3):389–392.
- Bonifazi F, de Vivo A, Rosti G, et al. Chronic myeloid leukemia and interferon-alpha: a study of complete cytogenetic responders. *Blood*. 2001;98(10):3074–3081.
- O'Brien SG, Guilhot F, Larson RA, et al. Imatinib compared with interferon and low-dose cytarabine for newly diagnosed chronic-phase chronic myeloid leukemia. *N Engl J Med*. 2003;348(11):994–1004.
- Björkholm M, Ohm L, Eloranta S, et al. Success story of targeted therapy in chronic myeloid leukemia: a population-based study of patients diagnosed in Sweden from 1973 to 2008. *J Clin Oncol*. 2011;29(18):2514–2520.
- US Food and Drug Administration. Imatinib. Available at: [http://www.accessdata.fda.gov/drugsatfda\\_docs/label/2008/021588s024bl.pdf](http://www.accessdata.fda.gov/drugsatfda_docs/label/2008/021588s024bl.pdf). Accessed March 19, 2013.
- US Food and Drug Administration. FDA grants accelerated approval of a new dosing regimen of dasatinib (Sprycel). [press release]. Silver Spring, MD: US Food and Drug Administration; 2007 [November 13]. Available from: <http://www.fda.gov/AboutFDA/CentersOffices/OfficeofMedicalProductsandTobacco/CDER/ucm129236.htm>. Accessed March 19, 2013.
- US Food and Drug Administration. Nilotinib (Tasigna). Available at: [press release]. Silver Spring, MD: US Food and Drug Administration; 2010 [June 18]. Available from: <http://www.fda.gov/AboutFDA/CentersOffices/OfficeofMedicalProductsandTobacco/CDER/ucm216218.htm>. Accessed March 19, 2013.
- US Food and Drug Administration. Ponatinib. [press release]. Silver Spring, MD: US Food and Drug Administration; 2012 [December 17]. Available from: <http://www.fda.gov/Drugs/InformationOnDrugs/ApprovedDrugs/ucm332368.htm>. Accessed March 23, 2013.

16. US Food and Drug Administration. Bosutinib tablets. [press release]. Silver Spring, MD: US Food and Drug Administration; 2012 [September 5]. Available from: <http://www.fda.gov/Drugs/InformationOnDrugs/ApprovedDrugs/ucm318203.htm>. Accessed March 17, 2013.
17. Puttini M, Coluccia AM, Boschelli F, et al. In vitro and in vivo activity of SKI-606, a novel Src-Abl inhibitor, against imatinib-resistant Bcr-Abl+ neoplastic cells. *Cancer Res*. 2006;66(23):11314–11322.
18. Rensing Rix LL, Rix U, Colinge J, et al. Global target profile of the kinase inhibitor bosutinib in primary chronic myeloid leukemia cells. *Leukemia*. 2009;23(3):477–485.
19. Abbas R, Hug BA, Leister C, Gaaloul ME, Chalon S, Sonnichsen D. A phase I ascending single-dose study of the safety, tolerability, and pharmacokinetics of bosutinib (SKI-606) in healthy adult subjects. *Cancer Chemother Pharmacol*. 2012;69(1):221–227.
20. Cortes JE, Kantarjian HM, Brümmendorf TH, et al. Safety and efficacy of bosutinib (SKI-606) in chronic phase Philadelphia chromosome-positive chronic myeloid leukemia patients with resistance or intolerance to imatinib. *Blood*. 2011;118(17):4567–4576.
21. Khoury HJ, Cortes JE, Kantarjian HM, et al. Bosutinib is active in chronic phase chronic myeloid leukemia after imatinib and dasatinib and/or nilotinib therapy failure. *Blood*. 2012;119(15):3403–3412.
22. Cortes JE, Kim DW, Kantarjian HM, et al. Bosutinib versus imatinib in newly diagnosed chronic-phase chronic myeloid leukemia: results from the BELA trial. *J Clin Oncol*. 2012;30(28):3486–3492.
23. Gambacorti-Passerini C, Khoury HJ, et al. Safety and efficacy of BOS in patients with AP and BP CML and Ph+ ALL following resistance/intolerance to IM and other TKIs: update from study SKI-200. Presented at the American Society of Clinical Oncology; June 4–8, 2010; Chicago, IL, USA. Abstract 6509.
24. Gambacorti-Passerini C, Brümmendorf TH, Cortes JE, et al. Evolution of bosutinib (BOS) toxicity in patients (pts) with Ph+ leukemia after resistance/intolerance to prior therapy. Presented at the American Society of Clinical Oncology; May 31–June 4, 2013; Chicago, IL, USA.
25. Khoury HJ, Cortes JE, Gambacorti-Passerini C, et al. Activity of bosutinib by baseline and emergent mutation status in Philadelphia chromosome-positive leukemia patients with resistance or intolerance to other tyrosine kinase inhibitors. Presented at the Annual Meeting of the American Society of Hematology; December 11, 2011; San Diego, CA, USA.
26. Redaelli S, Mogni L, Rostagno R, et al. Three novel patient-derived BCR/ABL mutants show different sensitivity to second and third generation tyrosine kinase inhibitors. *Am J Hematol*. 2012;87:E125–E128.
27. Trask PC, Cella D, Besson N, Kelly V, Masszi T, Kim DW. Health-related quality of life of bosutinib (SKI-606) in imatinib-resistant or imatinib-intolerant chronic phase chronic myeloid leukemia. *Leuk Res*. 2012;36(4):438–442.

## Pharmacogenomics and Personalized Medicine

### Publish your work in this journal

Pharmacogenomics and Personalized Medicine is an international, peer-reviewed, open access journal characterizing the influence of genotype on pharmacology leading to the development of personalized treatment programs and individualized drug selection for improved safety, efficacy and sustainability. This journal is indexed on the American Chemical

Submit your manuscript here: <http://www.dovepress.com/pharmacogenomics-and-personalized-medicine-journal>

Dovepress

Society's Chemical Abstracts Service (CAS). The manuscript management system is completely online and includes a very quick and fair peer-review system, which is all easy to use. Visit <http://www.dovepress.com/testimonials.php> to read real quotes from published authors.