


 Cite this: *RSC Adv.*, 2024, 14, 17318

# Degradation of different wastewater by a biological sponge iron system: microbial growth and influencing factors†

 Huina Xie, \* Wei Zhao, Jing Li and Jie Li

The bio-ZVI process has undergone widespread development in wastewater treatment in recent years. However, there has been limited examination of the growth and degradation characteristics of functional microorganisms within the system. In the present research, strains were isolated and identified from the bio-ZVI system constructed by sponge iron (encoded as SFe-M). The consistency of operating conditions in treating different wastewater was explored. Three SFe-acclimated microorganisms exhibiting characteristics of degrading organic pollutants and participating in the nitrogen removal process were isolated. The adaptation time of these microorganisms prolonged as the substrate toxicity increased, while the pollutant degradation was related to their metabolic rate in the logarithmic phase. All these functional bacteria exhibited the ability to treat wastewater in a wide pH range (5–8). However, the improper temperature (such as 10 °C and 40 °C) significantly inhibited their growth, and the optimal working temperature was identified as 30 °C. The iron dosage had a significant impact on these function bacteria, ranging from 1 g L<sup>-1</sup> to 150 g L<sup>-1</sup>. It was inferred that the SFe-acclimated microorganisms are capable of resisting the poison of excessive iron, that is, they all have strong adaptability. The results provide compelling evidence for further understanding of the degradation mechanism involved in the bio-ZVI process.

 Received 10th April 2024  
 Accepted 17th May 2024

DOI: 10.1039/d4ra02696a

[rsc.li/rsc-advances](https://rsc.li/rsc-advances)

## 1 Introduction

Zero-valent iron (ZVI) with its high reduction, non-toxicity, cost-effectiveness, and reliability has been widely used in wastewater treatment.<sup>1–4</sup> In recent years, the bio-ZVI process was developed by combining ZVI and biological processing for eliminating contaminants from wastewater.<sup>5,6</sup> ZVI can degrade contaminants directly. More importantly, during the ZVI biochemical corrosion process, Fe(II) and Fe(III) are released, which can serve as alternative electron donors or acceptors for the growth and reproduction of microorganisms, such as iron-oxidizing bacteria.<sup>7,8</sup> Meanwhile, microorganisms can induce the production of active oxygen species while metabolising iron ions.<sup>9</sup> Hence, the coupling of ZVI and biological processing can improve the biodegradability of refractory pollutants, including chlorpyrifos, tetracycline, nitrate, and nitrobenzene.

Microorganisms are responsible for the degradation of pollutants in biochemical processing. It is important to note that the presence of ZVI or its released ions can alter the microbial structure.<sup>10,11</sup> Furthermore, it is worth mentioning that microorganisms are domesticated into obligate bacteria for

different types of wastewater. However, studies on the bio-ZVI process have mainly focused on degradation effects,<sup>12,13</sup> with little attention paid to the growth characteristics of acclimated microbes. Furthermore, the consistency of operating conditions for acclimated microorganisms was not described in depth.

Sponge iron (SFe) is a special type of ZVI, which mainly contains ZVI and other elements, such as carbon, aluminum, nickel, copper and manganese.<sup>14,15</sup> When SFe is submerged in wastewater, countless microscale galvanic cells are formed. What's more, SFe with loose micropores provides a good habitat for the attached microbes. Besides, along with the iron ions releasing, dissolved oxygen (DO) in the wastewater will be consumed. It offers a special “microenvironment” structure of anaerobic-anoxic-aerobic for the symbiosis of microorganisms. Thus a special bio-ZVI process (encoded SFe-M system) was developed by combining SFe and biological processing.<sup>16</sup> Previous research has successfully employed the SFe-M system for the treatment of various types of wastewater, yielding promising results.<sup>17,18</sup> However, limited attention has been given to the functional microorganisms involved in this process. Here, this study focuses on isolating and identifying the functional microorganisms from different bio-SFe reactors. The degradation characteristics and operating conditions of different wastewaters treated by the acclimated microorganisms were evaluated.

School of Environmental and Municipal Engineering, Lanzhou Jiaotong University, Lanzhou 730070, China. E-mail: xiehuina@lztu.edu.cn

† Electronic supplementary information (ESI) available. See DOI: <https://doi.org/10.1039/d4ra02696a>



## 2 Materials and methods

### 2.1 Materials and chemicals

Ammonia nitrogen, aniline (AN), and nitrobenzene (NB) were purchased from Shanghai Sinopharm Chemical Reagent Co. Ltd, China. SFe with a diameter of 2–3 mm was provided by Beijing Jinke Composite Materials Co., Ltd (Beijing, China). Expect for 90% elemental iron, it also contains a small amount of manganese, chromium, nickel, magnesium oxide, carbon (0.28%, 0.01%, 0.038%, 0.051%, 3%). SFe was flushed with dilute sulfuric acid to remove the impurities and surface oxide layer, flushed with deionized water several times until the pH of the supernatant was neutral before being dried (378 K). Distilled water was used through all our experiments. Unless otherwise indicated, all chemicals used were analytical reagent grade as received.

Seed sludge was collected from the reactors operated under steady-state that the SFe-M method was employed to treat nitrogen-containing (NC), AN, and NB wastewater in our laboratory (Text S1†), encoded as  $S_{NC}$ ,  $S_{AN}$ , and  $S_{NB}$ , respectively.

The synthetic NC wastewater was prepared with  $(NH_4)_2SO_4$  (320 mg L<sup>-1</sup>),  $K_2CO_3$  (320 mg L<sup>-1</sup>),  $NaHCO_3$  (160 mg L<sup>-1</sup>),  $K_2HPO_4 \cdot 3H_2O$  (48.64 mg L<sup>-1</sup>),  $KH_2PO_4$  (19.2 mg L<sup>-1</sup>), glucose (2000 mg L<sup>-1</sup>). The synthetic AN wastewater was prepared with  $NaHCO_3$  (80 mg L<sup>-1</sup>),  $KH_2PO_4$  (9.6 mg L<sup>-1</sup>),  $K_2HPO_4$  (24 mg L<sup>-1</sup>),  $K_2CO_3$  (160 mg L<sup>-1</sup>), AN (600 mg L<sup>-1</sup>). The synthetic NB wastewater was prepared with  $Na_2HPO_4 \cdot 12H_2O$  (3800 mg L<sup>-1</sup>),  $KH_2PO_4$  (1000 mg L<sup>-1</sup>),  $NaCl$  (1000 mg L<sup>-1</sup>),  $MgSO_4 \cdot 7H_2O$  (200 mg L<sup>-1</sup>),  $NH_4Cl$  (100 mg L<sup>-1</sup>), NB (300 mg L<sup>-1</sup>).<sup>19</sup> Unless otherwise indicated, all chemicals used were analytical grade.

### 2.2 Experimental procedures

#### 2.2.1 Strain isolation, identification and characterization.

$S_{NC}$ ,  $S_{AN}$ , and  $S_{NB}$  were used as the seed sludge for strain isolation. 0.5 mL mixture after activation was inoculated into 500 mL flasks containing 100 mL of autoclaved NC medium, AN medium, and NB medium (Text S2†) in the Petri dish for bacteria enrichment,<sup>18</sup> respectively. It should be noted that before screening with NC medium, BTB medium and DM medium were used to screen  $S_{NC}$  successively to obtain an aerobic denitrification bacteria.<sup>20,21</sup> The Petri dish was incubated in an incubator (SPX, China) at 30 °C for 48 h. After several consecutive cultivations, the broth was diluted and spread onto the agar inorganic salt medium with NC, AN, and NB, respectively. After several cycles of transfer with an interval of 48 h, the microbial flora with high tolerance to NC, AN, and NB wastewater were picked. The method of 10-fold serial dilution was used to isolate strains in a consortium on the nutrient agar medium (Text S2†) containing NC, AN, and NB, respectively. Isolates were repurified three times by streaking, and the individual morphology of the colony was observed. The strain diameter was measured using the cross intersection method and each treatment was repeated 5 times. The degradation ability of NC, AN, and NB was checked in shake flask experiments. Purified high-efficiency strains were obtained and stored

at 4 °C. Finally, the purified high-efficiency strains were transferred to Taihe Biotechnology Co., Ltd (Beijing, China) for 16S rDNA gene sequence to identify the isolate.

The growth of bacteria was monitored spectrophotometrically in the conical flasks with an effective volume of 150 mL. Specifically, 1 mL of bacterial solution was added to the inorganic salt medium containing NC, AN, and NB, respectively. The reactors were placed in the thermostat oscillator (TS-200B, China) with 140 rpm oscillation frequency at  $30 \pm 2$  °C. The optical density at 600 nm ( $OD_{600}$ ) and organic matter concentration were measured at a certain interval during the cultivation.

**2.2.2 Batch experiments.** In the initial phase of the SFe-M system, the treatment efficacy of various types of zero-valent iron (ZVI) on AN wastewater was examined (Fig. S1†), including cast iron, manganese steel, and high-carbon steel. The results indicated that SFe demonstrated the most favorable performance. Consequently, SFe was pre-dominantly employed in this investigation. Analogously, the impact of carbon sources on nitrogen-containing wastewater removal was investigated (Fig. S2†). The results clearly indicate that glucose emerged as the most efficient agent for pollutant removal. So glucose was chosen as the carbon source for NC wastewater in our experiment. Furthermore, in the treatment of AN and NB wastewater, a gradual increase in the concentration of AN and NB during the initial domestication phase was employed.<sup>19,22</sup>

All the reactors in batch experiments were conducted in 500 mL conical flasks. It was replaced by 20 mL of bacterial-sludge mixture and 180 mL of synthetic wastewater. Among them, the conical flask containing the NB wastewater was sealed with butyl rubber stoppers. The reactors were placed in the thermostat oscillator (TS-200B, China) with 140 rpm oscillation frequency at  $30 \pm 2$  °C. Water samples were collected at regular intervals. The initial pH value was 5.0–8.0, the temperature was 10–40 °C, and the SFe dosages in this study were 0–150 g L<sup>-1</sup>.

### 2.3 Analytical methods

The analysis of NB was carried out using high-performance liquid chromatography (HPLC, Agilent 1200, USA) equipped with a UV detector. Methanol and water (70 : 30, V/V%) served as the mobile phase pumped at a flow rate of 1.00 mL min<sup>-1</sup>. The injection volume was 10 μL. AC18 column (150 mm × 4.6 mm × 4 μm) was conducted at a constant temperature of 30 °C to separate the pollutants. AN was quantified using the spectrophotometric method with *N*-(1-naphthyl) ethylenediamine. Samples were filtered with a 0.22 μm filter before measurement. The pH was monitored by a pH meter (pHS-3C, Leici, China). Following the standard methods for water and wastewater examination,<sup>23</sup> the determination of chemical oxygen demand (COD) was conducted using the dichromate method. Ammonia nitrogen ( $NH_4^+-N$ ) was quantified utilizing Nessler's reagent spectrophotometry. Nitrate nitrogen ( $NO_3^- - N$ ) were assessed *via* ultraviolet spectrophotometry, while nitrite nitrogen ( $NO_2^- - N$ ) was measured using *N*-(1-naphthyl)-ethylenediamine spectrophotometry. Total nitrogen (TN) was determined employing the potassium persulfate oxidation

ultraviolet spectrophotometric method. The growth of bacteria was evaluated in terms of absorbance change at 600 nm ( $OD_{600}$ ).

### 3 Results and discussion

#### 3.1 Isolation and identification of microorganisms in the SFe-M system

A strain with a strong AN degrading ability was screened from the bacteria liquid of  $S_{AN}$ , named IB-AN. IB-AN was flat in shape, metallic luster, radial edges, and a diameter of about 5 mm. Similarly, two strains were isolated from the bacteria liquid of  $S_{NC}$  and  $S_{NB}$ , named IB-NC and IB-NB respectively. IB-NC was an aerobic denitrification bacteria with a high nitrogen removal performance. IB-NC was spherical in shape, smooth in appearance and approximately 7 mm in diameter. IB-NB with a strong NB degrading ability was round in shape, with neat edges and about 2.5 mm in diameter. In particular, the ferrous oxidation rate of the three strains was above 90% in the physiological and biochemical identification experiments, indicating that these three strains all had iron oxidation function.

To establish the identity of IB-NC, IB-AN, and IB-NB more accurately, the 16S rRNA gene sequences were used to construct a phylogenetic tree. The phylogenetic tree was constructed by the neighbor-joining method (Fig. 1). The phylogenetic tree showed that IB-NC was closely related to *Achromobacter denitrificans*, which showed better NO reduction and sulfamethoxazole degradation efficiency.<sup>24,25</sup> Similarly, IB-AN and IB-NB exhibited 99% homology in the 16S rRNA gene sequence with the type strains of *Klebsiella oxytoca* and *Glutamicibacter*

*arilaitensis*, respectively. *Klebsiella oxytoca*, isolated from sediment, has demonstrated proficiency in nitrate removal from industrial wastewater<sup>26</sup> and utilize recalcitrant organics as the sole source of nitrogen.<sup>27</sup> *Glutamicibacter arilaitensis* exhibits distinctive traits, including a high number of Fe(III)/siderophore transport systems,<sup>28</sup> the ability to catabolize organics while transforming various forms of nitrogen compounds, such as ammonium, hydroxylamine, nitrate, and nitrite.<sup>29</sup> In conclusion, the SFe-M system contributed to the evolution of microorganisms into organic contaminants obligate degradation bacteria for different types of wastewater. Specially, these obligate bacteria possess characteristics conducive to the degradation of organic pollutants and participating in the nitrogen removal processes.

#### 3.2 Characteristics of microbial growth

The logistic model is a basic and important microbial growth model that mainly explains the impact of resources (such as food and space), environmental conditions and interspecific competition on the growth rate of microorganisms.<sup>30</sup> The logistic model was used to fit the growth curves of IB-AN, IB-NC, and IB-NB, the results are shown in Fig. 2 and Table 1.

Carbon source has a significant impact on the microbial community and microbial activity.<sup>31</sup> Therefore, the growth rate of bacteria is closely related to the carbon source. Fig. 2 showed that the logistic equation had a high fit degree for the growth of IB-NC, IB-AN, and IB-NB, and the regression coefficient  $R^2$  was 0.9959, 0.9618, and 0.99932, respectively. The strains had experienced growth stages such as the adaptation phase,

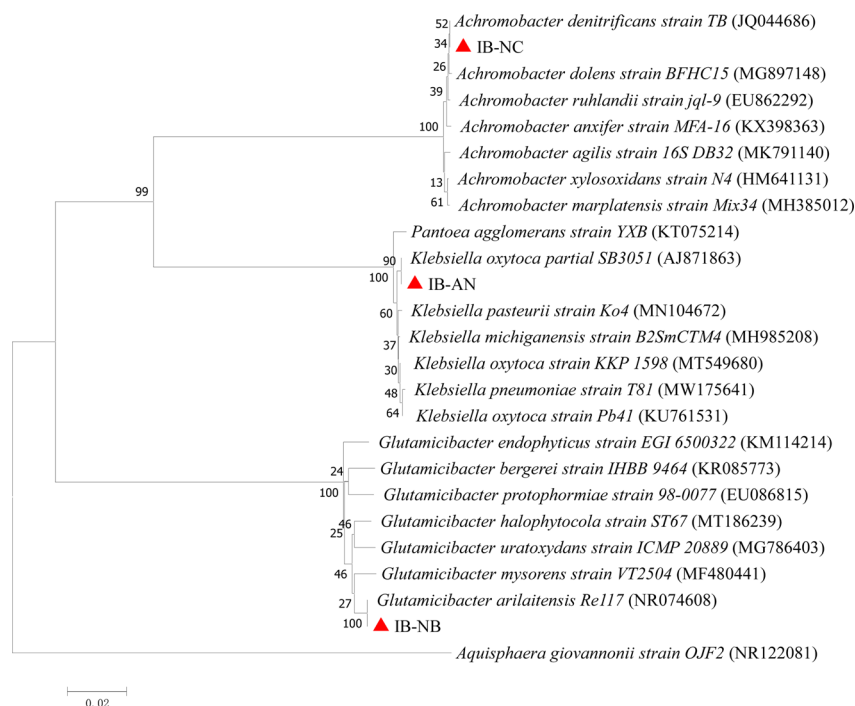


Fig. 1 Phylogenetic analysis of isolates. The scale bar indicates 0.002 substitutions per nucleotide position (IB-NC: a strain was screened from sludge in the SFe-M reactor treating nitrogen-containing wastewater. IB-AN: a strain was screened from sludge in the SFe-M reactor treating aniline wastewater. IB-NB: a strain was screened from sludge in the SFe-M reactor treating nitrobenzene wastewater).

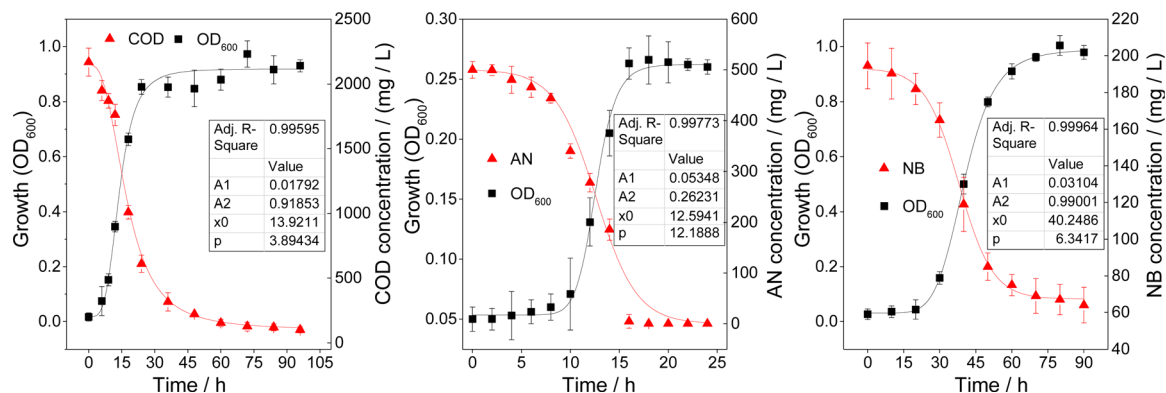


Fig. 2 Growth curves and organic degradation of strains (COD: chemical oxygen demand, OD<sub>600</sub>: the growth of bacteria was evaluated in terms of absorbance change at 600 nm, AN: aniline, NB: nitrobenzene).

Table 1 Logistic growth model of IB-NC, IB-AN, and IB-NB<sup>a</sup>

$$Y = A_2 + (A_1 - A_2) / (1 + (X/X_0)^p)$$

Microbes	A <sub>1</sub>	A <sub>2</sub>	X <sub>0</sub>	p
IB-NC	0.0179	0.9185	13.9211	3.8943
IB-AN	0.0535	0.2623	12.5941	12.1888
IB-NB	0.0310	0.9900	40.2486	6.3417

<sup>a</sup> IB-NC: a strain was screened from sludge in the SFe-M reactor treating nitrogen-containing wastewater. IB-AN: a strain was screened from sludge in the SFe-M reactor treating aniline wastewater. IB-NB: a strain was screened from sludge in the SFe-M reactor treating nitrobenzene wastewater.

logarithmic phase and stable phase. During the adaptation period, high concentrations of pollutants were toxic to microorganisms. Various enzyme systems in the cell adapt to the growth environment. The size of strains increased, but the number did not increase. Glucose is a carbon source that is easily degraded by microorganisms, so IB-NC could adapt to the initial load in 5 h. However, the adaptation period of IB-AN, and IB-NB was longer than 10 h for AN and NB were highly toxic and poorly bioavailable. That is, the order of the adaptation time was IB-NC < IB-AN < IB-NB. It indicated that the adaptation time of SFe-acclimated microorganisms was prolonged as the substrate toxicity increased. Microorganisms multiplied rapidly in the logarithmic growth phase, which accelerated the degradation of organic pollutants. The order of microbial rapid propagation time was IB-NC < IB-AN < IB-NB. Clearly, IB-AN had a relatively faster degradation rate of AN. It was speculated that the degradation rate of organic matters by SFe-acclimated microorganisms in the logarithmic phase was related to their metabolic rate.

### 3.3 Influencing factors of pollutants degradation by microorganisms

**3.3.1 Effects of pH.** pH plays a crucial role in numerous physiological activities of microorganisms, such as microbial cell structure, substrate utilization rate, enzyme activity, cell membrane charge, and membrane permeability.<sup>32</sup> The

influence of pH on the degradation of organic contaminants by microbes is shown in Fig. 3. IB-NC was less affected by pH, with a TN removal rate exceeding 90% within 20 hours across all pH levels. Similarly, AN was completely degraded by IB-AN within 20 h at all pH. Not as good as NC and AN, the degradation rate of NB was less than 70% within 60 h. However, it enriched the ability of *Glutamicibacter arilaitensis* which was only used for removing nitrogen in previous reports.<sup>33</sup> As we all know, the optimal growth pH for functional bacteria to degrade most pollutants is neutral.<sup>34,35</sup> In contrast, the SFe-acclimated strains of IB-NC, IB-AN, IB-NB were less pH dependent in the degradation of organic matter. The presence of ZVI in the bioreactor expanded the pH range,<sup>6</sup> where the submergence of SFe also widened the pH range of functional bacteria for better removal efficiency. In conclusion, in the SFe-M system, although the domesticated microorganisms had different removal effects on target pollutants, they exhibited relatively lower sensitivity to pH fluctuations. This implies that SFe-acclimated microorganisms possess the capacity to degrade contaminants effectively across a wide pH range.

**3.3.2 Effects of temperature.** Temperature, an important parameter for both the steady-state operation of the reactor and the growth of microorganisms, is consistently considered in many reported literature.<sup>36,37</sup> As exhibited in Fig. 4, the removal rate of TN, AN, and NB were only about 15% at 10 °C. As the temperature increased, the degradation effect of IB-NC, IB-AN, and IB-NB increased. The removal rate of TN, AN, and NB reached the maximum value of 92%, 100%, 69% at 30 °C, respectively. However, the removal rate of the three reactors dropped sharply to 20% at 40 °C. While elevated temperatures can significantly enhance contaminant removal in iron-only reactors,<sup>38</sup> the combination of SFe and microorganisms is essential for maximizing the efficiency of the SFe-M system.<sup>16</sup> In the SFe-M system, SFe domesticated different functional bacteria for different substrates. These functional microorganisms exhibit sensitivity to temperature, with an optimal growth temperature of 30 °C.

**3.3.3 Effects of SFe dosage.** Iron serves as an important mass and energy source for microorganisms.<sup>39,40</sup> Do SFe-acclimated microorganisms have a greater demand for iron?



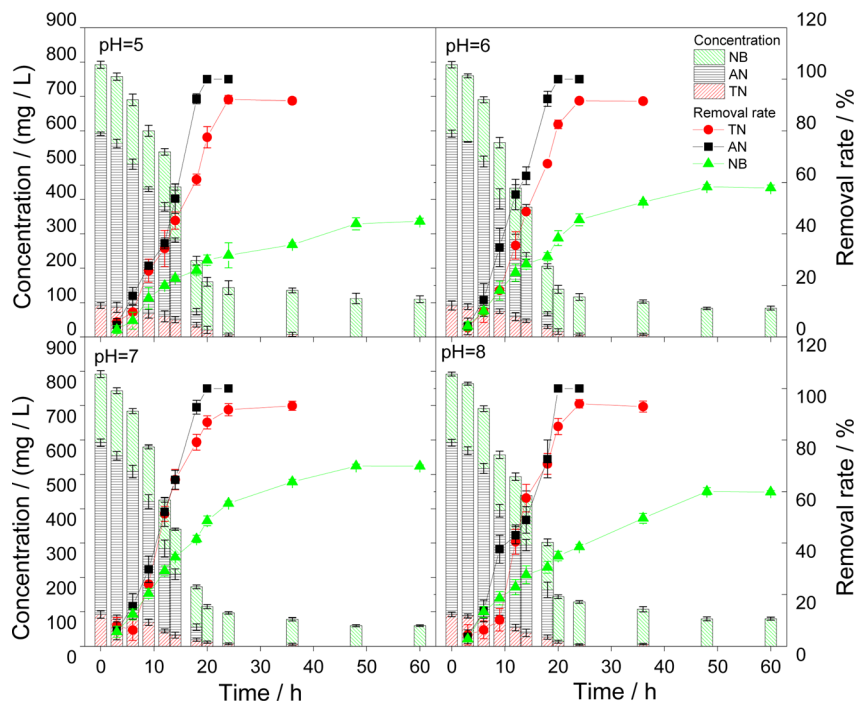


Fig. 3 Effects of initial pH value on pollutants removal (NB: nitrobenzene, AN: aniline, TN: total nitrogen).

The influence of SFe dosage on the degradation of organic pollutants by microbes was shown in Fig. 5. As the SFe dosage increased, the average effluent concentration of TN initially decreased and then increased during the stable period. The reactor with IB-NC strain achieved a maximum removal rate of 94.5% at  $1 \text{ g L}^{-1}$ . Analogously, the reactor with IB-AN strain

obtained the maximum removal rate of AN at  $5 \text{ g L}^{-1}$ . By comparison, the removal rate of NB gradually increased with the SFe dosage increased during the stable period. What's more, the SFe dosage required for IB-NB was significantly higher than that of IB-NC and IB-AN. It indicated that although IB-NC, IB-AN, and IB-NB were domesticated at the same SFe dosage, the

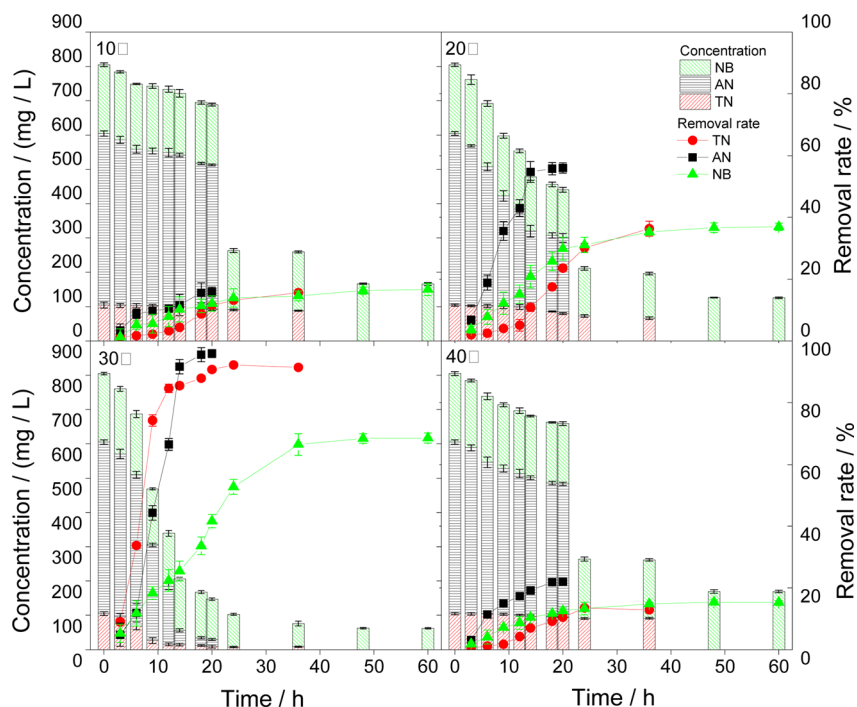


Fig. 4 Effects of temperature on pollutants removal (NB: nitrobenzene, AN: aniline, TN: total nitrogen).

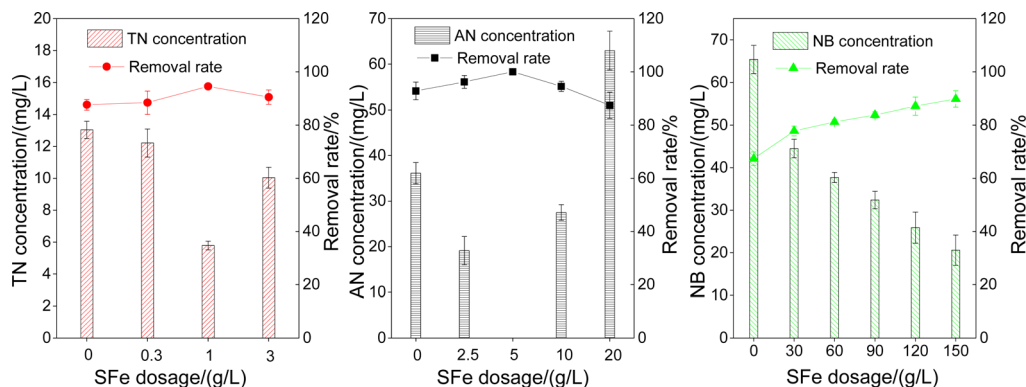


Fig. 5 Effects of SFe dosage on pollutant removal. The pollutants concentration and removal rate were the average value of the reactor effluent in the stable period (NB: nitrobenzene, AN: aniline, TN: total nitrogen).

required iron concentration was not consistent. However, even with  $90 \text{ g L}^{-1}$  SFe, IB-NC and IB-AN could still play the role of functional bacteria very well in the SFe-M system. Microbial metabolism characteristics likely depend on factors, such as the type of carbon source,<sup>41</sup> the operating conditions of the reactor,<sup>42</sup> and the abiotic reaction of the system.<sup>43</sup> Therefore, in the complex SFe-M system, functional microorganisms can resist the inhibition of excessive iron while exerting their own functions. These phenomena indicate that SFe-acclimated microorganisms possess superior adaptive capabilities.

### 3.4 Nitrogen compound analysis

Since all three strains exhibited nitrogen removal capabilities, the variations in nitrogen compounds during pollutant degradation were monitored, as depicted in Fig. 6. In Fig. 6(a), the removal of conventional nitrogen-containing wastewater by IB-NC was illustrated. It was obvious that with the degradation of ammonia nitrogen, the concentration of nitrate nitrogen initially increases before decreasing. This suggested that the denitrification process of IB-NC was inhibited after 6 h, leading to nitrate accumulation. TN reached a stable removal rate after 8 h. In Fig. 6(b), the removal of AN wastewater by IB-AN was shown. As AN degrades,  $\text{NH}_4^+\text{-N}$ ,  $\text{NO}_3^-\text{-N}$ , and  $\text{NO}_2^-\text{-N}$  were

detected in the reactor. Amino group on the benzene ring is a primary contributor to AN's high toxicity. The concentration of  $\text{NH}_4^+\text{-N}$  increased, which indicating that the nitrogen element in AN could be released as the ammonia ions during the degradation of AN.<sup>44</sup> To a certain extent, it indicated the effective transformation and degradation of AN. In Fig. 6(c), the removal of NB wastewater by IB-NB was presented. It was evident that  $\text{NH}_4^+\text{-N}$  concentration increases as NB degrades. Presumably, NB was converted to phenyl hydroxylamine and diaminophenol with  $\text{NH}_4^+\text{-N}$  release, indicating that partial reduction of NB may be the primary pathway in this system.<sup>45</sup>

### 3.5 Discussion on mechanism

A proposed model illustrates the enhanced mechanism of the SFe-M system (Fig. 7). This system entails a symbiotic relationship between sponge iron and microorganisms, including micro-electrolysis, Fe/ $\text{O}_2$  chemical reactions, iron microbial and chemical corrosion. A significant amount of Fe(II) and  $\text{H}_2\text{O}_2$  was detected at the beginning of the reaction as the SFe continuously corroded.<sup>19,44,45</sup> It initiated the Fenton reaction between Fe(II) and  $\text{H}_2\text{O}_2$ , resulting in the sustained generation of hydroxyl free radicals and hydroxyl free radicals exhibited strong reactivity towards the toxic functional groups of

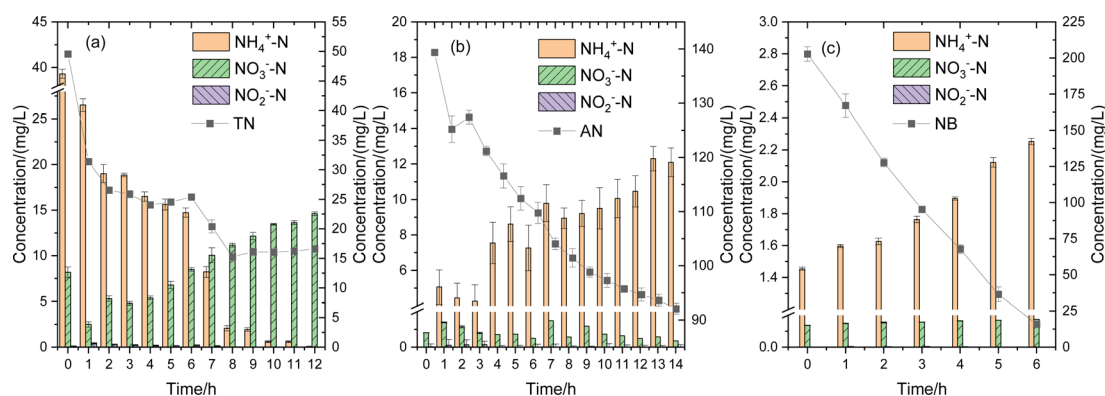


Fig. 6 Changes of nitrogen compounds during the degradation of pollutants by biological sponge iron system. (a) Nitrogen-containing wastewater, (b) AN wastewater, (c) NB wastewater. ( $\text{NH}_4^+\text{-N}$ : ammonia-nitrogen,  $\text{NO}_3^-\text{-N}$ : nitrate-nitrogen,  $\text{NO}_2^-\text{-N}$ : nitrite-nitrogen, TN: total nitrogen, AN: aniline, NB: nitrobenzene).

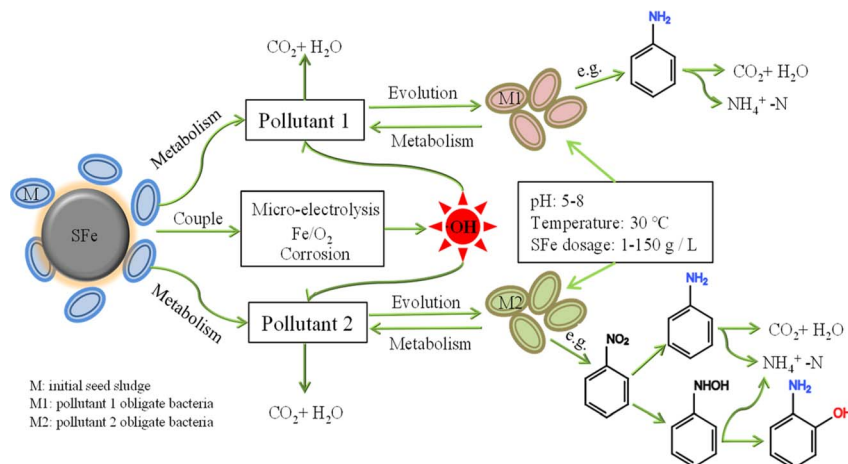


Fig. 7 Mechanism of microbial evolution during the degradation of pollutants by biological sponge iron system.

pollutants. It's imperative to recognize that SFe contributes to the evolution of microorganisms into obligate degradation bacteria for different types of wastewater. These functional microorganisms play a pivotal role in metabolizing pollutants, thereby facilitating internal enhancement and removal. It is interesting that all these functional bacteria exhibit efficient wastewater treatment capabilities across a broad pH range (5–8). However, a significant difference in iron dosage was observed, ranging from 1 g L<sup>-1</sup> to 150 g L<sup>-1</sup>. The internal degradation mechanism of the bio-ZVI process was further revealed, shedding light on its intricate workings.

In summary, SFe-M system, as a novel wastewater treatment technology, exhibits promising applications. In fact, in our early exploration, the SFe-M system was applied to treat acrylic fiber wastewater and fine chemical wastewater. Results demonstrated that the SFe-M system achieved the removal rates of 60% for COD and 90% for NH<sub>4</sub><sup>+</sup>-N in acrylic fiber wastewater. Additionally, compared with the control group, SFe had a good effect on stimulating the growth of bacteria.<sup>46</sup> In the treatment of fine chemical wastewater, the SFe-M system exhibited impressive removal efficiencies, with COD, TN, and TP removal rates reaching 31.83%, 23.67%, and 65.17%, respectively. Following biochemical treatment, effluent COD, TN, and TP levels met regulatory standards.<sup>47</sup> However, our current focus on refractory wastewater remains in the experimental research phase. As noted by Xu, further exploration is required to transition the bio-ZVI process to practical implementation on a commercial scale, particularly in addressing effluents with multiple contaminants.<sup>48</sup> In addition, the practical application of the bio-ZVI system is constrained by various factors, including the passivation of ZVI, initial inhibition of iron to microorganisms, and the way of iron dosing. These limitations have spurred the development of enhanced treatment methods such as electrochemical methods, activated carbon, and bacteria-mediated approaches. Ultimately, the bio-ZVI process holds significant potential for widespread adoption. Ultimately, the bio-ZVI process holds significant potential for widespread adoption.

## 4 Conclusions

Microorganisms play an important role in biochemical processing. Three high-efficiency SFe-acclimated strains were isolated from the SFe-M system for treating NC, AN, and NB wastewater. These strains exhibited a remarkable 99% homology in the 16S rRNA gene sequence to the type strain of *Achromobacter denitrificans*, *Klebsiella oxytoca* and *Glutamicibacter arilaitensis*, respectively. Notably, all three strains demonstrated proficiency in degrading organic pollutants and participating in the nitrogen removal process. The growth curves denoted that the adaptation time followed the order IB-NC < IB-AN < IB-NB, indicating that the adaptation time was prolonged as the substrate toxicity increased. But the logarithmic phase depended on each strain's individual metabolic rate. The SFe-acclimated microorganisms displayed uniform temperature requirements when treating wastewater separately, and the optimal temperature was 30 °C. Conversely, they exhibited less sensitivity to initial pH values. The optimal SFe dosage of IB-NC, IB-AN, and IB-NB was 1 g L<sup>-1</sup>, 5 g L<sup>-1</sup>, and 150 g L<sup>-1</sup>, which proved that they have better adaptive capacity to iron dosage in the complex SFe-M system.

## Author contributions

Huina Xie: conceptualization, writing – reviewing and editing, supervision, project administration, funding. Wei Zhao: investigation, data curation, funding. Jing Li: investigation, data curation. Jie Li: methodology, supervision, validation, formal analysis.

## Conflicts of interest

There are no conflicts to declare.

## Acknowledgements

This work was supported by the Gansu Province Higher Education Innovation Fund Project (2022A-039), Science and

technology project of China Railway Qinghai-Tibet Group Co., Ltd (QZ2022-Q09), Gansu Youth Science and Technology Fund (23JRRA888), Tianyou Youth Talent Lift Program of Lanzhou Jiaotong University, and National Natural Science Foundation of China (51768032).

## Notes and references

- 1 Q. Dou, L. Zhang, S. La, S. Hao, W. Guo, Q. Sun, Y. Wan, Y. Peng, X. Wang and J. Yang, *Bioresour. Technol.*, 2022, **356**, 127317.
- 2 M. Minella, S. Bertinetti, K. Hann, C. Minero and D. Vione, *Environ. Res.*, 2019, **179**, 108750.
- 3 L. Xu, Y. Yang, J. Su, C. He, J. Shi, H. Yan and H. Wei, *Environ. Res.*, 2023, **219**, 115163.
- 4 J. Wang and J. Tang, *Chemosphere*, 2021, **276**, 130177.
- 5 Z. Xu, W. Wang, Y. Liu, Y. Zhao, X. Zhang and Y. Ban, *Bioresour. Technol.*, 2023, **386**, 129516.
- 6 G. Yo, P. Wang, J. Hou, C. Wang, Y. Xu, L. Mia, B. Lv, Y. Yang and F. Zhang, *Crit. Rev. Environ. Sci. Technol.*, 2017, **47**, 877–907.
- 7 S. Wang, A. Zhou, J. Zhang, Z. Liu, J. Zheng, X. Zhao and X. Yu, *RSC Adv.*, 2019, **9**, 1176–1186.
- 8 J. Wang, H. Fang, H. Jia, G. Yang, F. Gao and W. Liu, *Environ. Sci. Pollut. Res.*, 2018, **25**, 749–757.
- 9 X. Wang and T. Waite, *Water Res.*, 2010, **44**, 3511–3521.
- 10 J. Xu, X. Liu, J. Huang, M. Huang, T. Wang, S. Bao, W. Tang and T. Fang, *RSC Adv.*, 2020, **10**, 23212–23220.
- 11 W. Xu, H. Zhao, H. Cao, Y. Zhang, Y. Sheng, T. Li, S. Zhou and H. Li, *Bioresour. Technol.*, 2019, **300**, 122667.
- 12 T. Guo, Y. Ji, J. Zhao, H. Horn and J. Li, *Water Res.*, 2020, **186**, 116331.
- 13 C. Wang, Y. Xu, J. Hou, P. Wang, F. Zhang, Q. Zhou and G. You, *Sci. Total Environ.*, 2019, **689**, 1044–1053.
- 14 Y. Ju, X. Liu, Z. Li, J. Kang, X. Wang, Y. Zhang, J. Fang and D. D. Dionysiou, *J. Hazard. Mater.*, 2015, **283**, 469–479.
- 15 X. Hou, L. Chu, Y. Wang, X. Song, Y. Liu, D. Li and X. Zhao, *Bioresour. Technol.*, 2023, **384**, 129270.
- 16 H. Xie, J. Li, Y. Wang, W. Zhao, L. Zhang and J. Li, *Process Biochem.*, 2021, **101**, 230–236.
- 17 Y. Wang, J. Li, S. Zhai, Z. Wei and J. Feng, *Water Sci. Technol.*, 2015, **72**, 1257–1265.
- 18 Q. Jin, Z. Hu, Z. Jin, L. Qiu, W. Zhong and Z. Pa, *Bioresour. Technol.*, 2012, **117**, 148–154.
- 19 J. Li, Y. Wang, H. Xie, W. Zhao, L. Zhang and J. Li, *Bioprocess Biosyst. Eng.*, 2022, **45**, 117–130.
- 20 G. Fu, L. Zhao, L. K. Huangshen and J. Wu, *Bioresour. Technol.*, 2019, **290**, 121725.
- 21 D. Li, X. Liang, Y. Jin, C. Wu and R. Zhou, *Appl. Biochem. Biotechnol.*, 2019, **188**, 540–554.
- 22 Y. Zheng, B. Mu, P. Wang, Y. Wang and J. Li, *China Environ. Sci.*, 2018, **38**, 2535–2541.
- 23 China NEPA, *Water and Wastewater Monitoring Methods*, Chinese Environmental Science Publishing House, Beijing, China, 4th edn, 2012.
- 24 C. Chen, Y. Wang, H. Liu, Y. Chen, J. Yao, J. Chen, D. Hrynsphanb and S. Tatsianab, *Chemosphere*, 2020, **253**, 126739.
- 25 P. Y. Nguyen, A. F. Silva, A. C. Reis, O. C. Nunes, A. M. Rodrigues, J. E. Rodrigues, V. V. Cardoso, M. J. Benoliel, M. A. M. Reis, A. Oehmen and G. Carvalho, *Sci. Total Environ.*, 2019, **648**, 44–55.
- 26 P. Guadalupe, O. José-Miguel, S. B. Luis, C. Victor and L. R. Juan, *Biotechnol. Bioeng.*, 1998, **58**, 510–514.
- 27 C. Kao, K. Chen, J. Liu, S. Chou and S. Chen, *Appl. Microbiol. Biotechnol.*, 2006, **71**, 228–233.
- 28 C. Monnet, V. Loux, J. F. Gibrat, E. Spinnler, V. Barbe, B. Vacherie, F. Gavory, E. Gourbeyre, P. Siguier, M. Chandler, R. Elleuch, F. Irlinger and T. Vallaey, *PLoS One*, 2010, **5**, e15489.
- 29 T. He, D. Xie, J. Ni, Z. Li and Z. Li, *Sci. Total Environ.*, 2020, **701**, 134730.
- 30 Q. Zhou, S. Takenaka, S. Murakami, P. Seesuriyachan, A. Kuntiya and K. Aoki, *J. Biosci. Bioeng.*, 2007, **103**, 185–191.
- 31 A. Mielcarek, J. Rodziewicz, W. Janczukowicz and J. Struk-Sokołowska, *Sci. Total Environ.*, 2020, **720**, 137377.
- 32 J. C. Aciego Pietri and P. C. Brookes, *Soil Biol. Biochem.*, 2009, **41**, 1396–1405.
- 33 T. He and Z. Li, *Desalin. Water Treat.*, 2015, **57**, 19181–19189.
- 34 S. Deng, D. Li, X. Yang, W. Xing, J. Li and Q. Zhang, *Bioresour. Technol.*, 2016, **219**, 677–686.
- 35 B. Maria, J. P. M. Carlos, F. Milton, P. M. S. N. Maria Graça, F. F. Maria Amparo and A. Adelaide, *Sci. Total Environ.*, 2023, **860**, 160427.
- 36 A. Konstantinos, Ł. Mateusz, G. A. Antonio, M. Antonios, Z. Wen, N. G. Hariklia and V. S. Ioannis, *Chem. Eng. J.*, 2020, **393**, 124739.
- 37 J. Ma, M. Xie, N. Zhao, Y. Wang, Q. Lin, Y. Zhu, Y. Chao, Z. Ni and R. Qiu, *Sci. Total Environ.*, 2023, **878**, 162720.
- 38 Y. Sun, J. Li, T. Huang and X. Guan, *Water Res.*, 2016, **100**, 277–295.
- 39 Z. Ai, S. Zheng, D. Liu, S. Wang, H. Wang, W. Huang, Z. Lei, Z. Zhang, F. Yang and W. Huang, *Chemosphere*, 2022, **306**, 135544.
- 40 B. Wang, L. Lu, Y. Zhang, K. Fang, D. An and H. Li, *Sci. Total Environ.*, 2020, **753**, 142073.
- 41 J. Wang and Z. Sun, *J. Hazard. Mater.*, 2020, **392**, 122293.
- 42 B. Yang, J. Wang, J. Wang, H. Xu, X. Song, Y. Wang, F. Li, Y. Liu and J. Bai, *Bioresour. Technol.*, 2018, **250**, 374–381.
- 43 A. V. Vahatalo, Y. Xiao and K. Salonen, *Water Res.*, 2021, **188**, 116483.
- 44 H. Xie, J. Li, Y. Wang, W. Zhao, L. Zhang and J. Li, *Process Biochem.*, 2021, **101**, 230–236.
- 45 K. Guo, W. Li, Y. Wang, Y. Zheng, B. Ji, F. Mao, H. Xie and J. Li, *Process Biochem.*, 2021, **108**, 146–152.
- 46 H. Xie, Y. Wang, J. Li, W. Zhao and B. Ji, *China Environ. Sci.*, 2018, **38**, 3406–3412.
- 47 W. Xu, D. Wei, J. Li, F. Zhang and W. Zhou, *Pearl River*, 2020, **41**, 91–97.
- 48 Y. Xu, C. Wang, J. Hou, P. Wang, G. You, L. Miao, B. Lv, Y. Yang and F. Zhang, *Rev. Environ. Sci. Biotechnol.*, 2017, **16**, 667–693.