

Available online at www.sciencedirect.com

ScienceDirect

journal homepage: <http://Elsevier.com/locate/radcr>

Case Report

Recurrent urinary tract infections in an adult with a duplicated renal collecting system

Junaid Raja MD, MSPH, MS^{a,*}, Amir M. Mohareb MD^b, Bilori Bilori MD^a

^a Department of Internal Medicine, Yale Waterbury Internal Medicine Residency program, 64 Robbins St, Waterbury, CT 06708, USA

^b Department of Internal Medicine, Yale University School of Medicine, New Haven, CT, USA

ARTICLE INFO

Article history:

Received 6 February 2016

Received in revised form

29 July 2016

Accepted 19 August 2016

Available online 21 October 2016

Keywords:

Duplicated renal collecting system

Genitourinary imaging

Unexplained recurrent infections

ABSTRACT

Because of advancements in fetal imaging, anatomic variants of the genitourinary tract are most often discovered in the antenatal period. As such, general internists are less likely to encounter adult patients with previously undiagnosed anatomic abnormalities of the renal collecting system, such as duplicated kidneys. These abnormalities put patients at risk for urinary obstruction and recurrent infections of the urinary tract. We report the case of a 40-year-old diabetic patient with a previously undiagnosed duplex kidney who had recurrent episodes of diabetic ketoacidosis triggered by urinary tract infections. She was ultimately found to have abscess formation in the duplicated renal moiety. We reviewed the epidemiology, diagnosis, and management of duplex kidneys. We also reviewed the indications for renal imaging in adult patients with similar clinical presentations.

© 2016 the Authors. Published by Elsevier Inc. under copyright license from the University of Washington. This is an open access article under the CC BY-NC-ND license (<http://creativecommons.org/licenses/by-nc-nd/4.0/>).

Introduction

The most common anatomic variant of renal anatomy is duplication of the kidney's collecting system, wherein an additional renal moiety is situated adjacent (usually superior) to the kidney with an independent ureteral origin. Estimated prevalence of duplex kidneys ranges between 0.3% and 6% of the population with a female preponderance [1–4]. One consequence of a redundant renal collecting system is ureteric orifice malpositioning, such that the ureter of the inferior pole implants with a shorter tunnel into the bladder, thereby predisposing to vesicoureteral reflux. On the other hand, the positioning of the ureter of the superior pole of the kidney makes it more prone to

ureteroceles and obstruction at the ureterovesicular junction. Childhood detection of such renal anomalies has dramatically increased because of more innovative fetal imaging; however, a significant number of undiagnosed adults still exist [1,5,6]. Such adult patients are at increased risk of recurrent episodes of urinary tract infections (UTIs) and pyelonephritis.

Case report

A 41-year-old female patient with a medical history of type I diabetes mellitus and hypothyroidism presented with 4 days of nausea, vomiting, and decreased oral intake. She also

Competing Interests: The authors have declared that no competing interests exist.

* Corresponding author.

E-mail address: junaid.y.raja@gmail.com (J. Raja).

<http://dx.doi.org/10.1016/j.radcr.2016.08.015>

1930-0433/ © 2016 the Authors. Published by Elsevier Inc. under copyright license from the University of Washington. This is an open access article under the CC BY-NC-ND license (<http://creativecommons.org/licenses/by-nc-nd/4.0/>).

complained of malodorous urine with left-sided flank pain but did not have dysuria. At home, she noted that her random blood sugars surpassed 300 despite strict adherence to a carbohydrate-controlled diet and insulin regime. The night before presentation, the patient also experienced fever and chills. The patient also shared a history of frequent UTIs as a child and young adult, including a similar episode approximately 6 weeks before this presentation, for which she was seen at an outside hospital.

On presentation, the patient's vital signs were initially within normal limits, and her examination was remarkable for a fatigued appearance, dry mucous membranes, tachycardia, dry and warm skin, and left flank and costovertebral angle tenderness. Laboratory work-up was significant for a marked leukocytosis, acute kidney injury, and an anion gap metabolic acidosis with positive serum ketones. Urinalysis showed pyuria and bacteriuria. The patient was diagnosed with diabetic ketoacidosis with pyelonephritis as a presumed source of infection. She was managed with crystalloid fluid resuscitation, an insulin infusion, and she was initiated on empiric ceftriaxone. Initially, the patient clinically improved with ceftriaxone targeting *Escherichia coli*, the organism isolated from an admission urine culture. However, on hospital day 3, she again began to experience high-grade fevers and rigors despite appropriate therapy. This raised the suspicion for complicated pyelonephritis with abscess formation.

Given her young age, history of recurrent UTIs, and persistent fevers, she underwent a retroperitoneal ultrasound, which showed an approximately 6 × 6-cm hetero-echogenic mass on the superior pole of her left kidney with variable Doppler flow (Fig. 1). This finding was determined to be quite concerning as either a severely damaged and infected portion of the kidney versus malignancy. To further characterize this mass, she underwent computerized tomography and magnetic resonance imaging of the abdomen, which showed a 6.1 × 6.7 × 5.5-cm heterogeneous-enhancing soft-tissue mass that was consistent with a duplicated collecting system on the superior pole of her left kidney, although it was initially mistaken for representing a mass suspicious for cystic renal cell carcinoma (Figs. 2 and 3). Ultimately, magnetic

resonance imaging characterized abscess formation within the duplicated kidney.

She subsequently underwent interventional radiology-guided percutaneous drain placement that initially yielded over 20 cc of purulent material with culture positivity for *E. coli*. She was then continued on oral cefpodoxime to complete her 28-day course (based on microbiologic sensitivities) and continued to improve clinically with arrangements made outpatient follow-up with urology and interventional radiology. Ultimately, serial ultrasound follow-up imaging and fluoroscopic drainage of the duplicated system occurred over the following 2 months by interventional radiology, and the patient recovered without complication.

Discussion

Diagnosis of a duplicated kidney is the best made radiographically by identification of dual collecting systems. The redundant renal moiety can often be atrophied and may thus have variable size and appearance on diagnostic imaging, often being confused for renal cysts [7]. Traditionally, ultrasound and voiding cystourethrograms have been used to visualize the complete urinary tract and to show evidence of reflux [8]. More conventionally, contrast-enhanced computerized tomography scan can demonstrate the redundant ureter and evidence of associated hydronephrosis.

The two most important clinical consequences of a duplex kidney are vesicoureteral reflex and ureterovesicular junction obstruction. Previous reports on this condition in children detail the many possible anatomic variations of a duplicated collecting system, differing mostly in where the redundant ureter inserts [9]. Clinical presentations associated with duplicated kidneys include flank pain, hematuria, and UTIs [1]. Patients who are symptomatic most often present during childhood, with adult cases more often being discovered incidentally on abdominal imaging [6]. Thus, our case was unusual since one would expect the abnormality in such a symptomatic patient have come to clinical attention earlier in life.

When the diagnosis of duplex kidneys is made in children, radioisotope studies can be conducted to quantify differential renal function in the normal kidney and redundant renal moiety [8]. Surgical extraction is not without risk as over half of pediatric patients will have at least a slight decrease in renal function, and approximately 8% of patients will have more dramatic decrease in renal function [3]. Although there have not been similar studies conducted in adults with duplicated systems, we postulate as a parallel a higher proportion of this subset may suffer from a significant decrease in renal function. As in our case, patients with acutely infected duplex kidneys should receive antibiotic therapy, along with abscess drainage when indicated, before definitive management of the duplicated collecting system.

Of all adult patients with UTIs, the proportion with hitherto undiagnosed anatomic renal abnormalities is suspected to be quite low. Similarly, pyelonephritis is a clinical diagnosis and does not ordinarily require imaging, especially in patients who respond to therapy [10]. Expert clinical opinion states that even in patients with recurrent UTIs, routine urologic imaging has a low diagnostic yield [11]. The decision to pursue

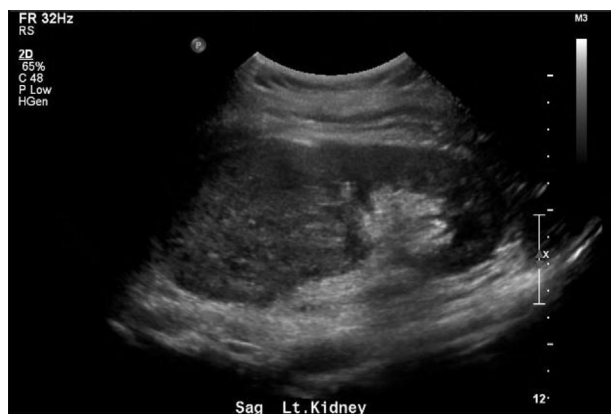


Fig. 1 – Sagittal ultrasound of left kidney demonstrating echogenic superior pole density.

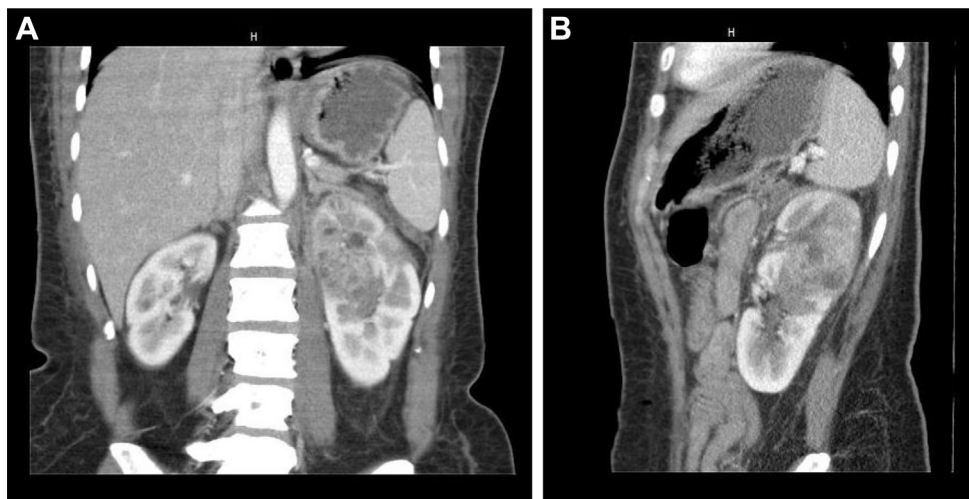


Fig. 2 – (A) Coronal view of CT abdomen with intravenous (IV) contrast demonstrating superior pole abscess. (B) Sagittal view of CT abdomen with IV contrast demonstrating left duplex kidney with superior pole abscess.

diagnostic imaging in such patients often depends on specific clinical red flags [12]. Patients with poorly controlled diabetes, immunocompromised states, or nonresponse to 72 h of appropriate antibiotic therapy may warrant early imaging because they are at increased risk for complications, including renal abscess formation, emphysematous pyelonephritis, and pyonephrosis (infected hydronephrosis). Patients with symptoms or additional risk factors for nephrolithiasis may also warrant imaging to exclude renal calculi as a nidus of infection. Such patients often have recurrent pyelonephritis by the same organism.

Our patient provided history of recurrent UTIs with no recollection of prior abdominal imaging. She was also a type 1 diabetic, at risk of recurrent ketoacidosis with each episode of infection. Finally, she had persistent fevers and rigors despite appropriate antibiotic therapy. These clinical factors all played into the decision to pursue renal ultrasonography, which led the diagnostic cascade helping diagnose her congenital abnormality.

Conclusions

Duplicated renal systems are not a common finding, and although they are more likely to be clinically significant in the pediatric population, there are certainly adults who experience untoward events due to their variant anatomy. As in the case of the young diabetic woman presented previously, pyelonephritis should certainly be considered a possible complication of an atypical ureteral course, as should recurrent uncomplicated UTIs raise concern either for reflux or an abnormal course of the ureters. The potential for severe complications including sepsis, as in the case previously mentioned, emphasize the need to be vigilant in diagnosing and treating mixed metabolic acidosis due to diabetic ketoacidosis in conjunction or as a result of infection. Moreover, the reduced likelihood of a duplicated renal system manifesting in adulthood requires the consideration of malignancy on the differential until proven otherwise. Perhaps, the greatest

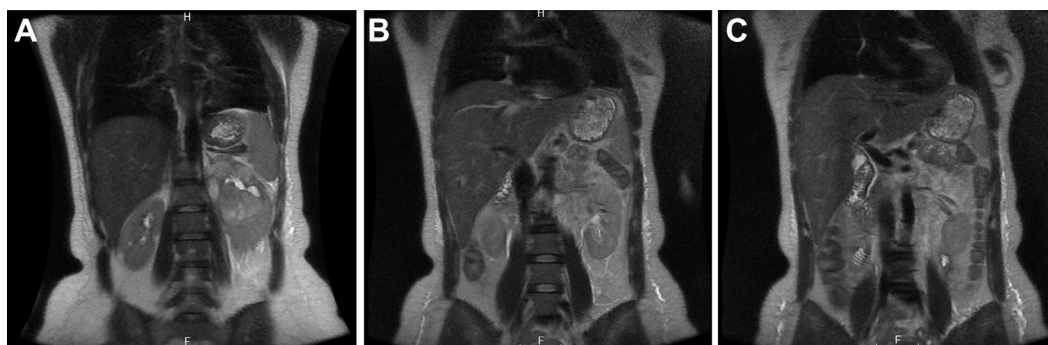


Fig. 3 – (A) Coronal view abdominal T2-weighted magnetic resonance imaging demonstrating left renal abscess. (B, C) Coronal view abdominal magnetic resonance imaging T2-weighted demonstrating left dual ureters.

takeaway from this case is maintaining a broad differential and high degree of inquisitiveness in the setting of recurrent infections for a seemingly “normal” host.

REFERENCES

- [1] Zissin R, Apter S, Yaffe D, Kots E, Gayer G, Nissenkorn I, et al. Renal duplication with associated complications in adults: CT findings in 26 cases. *Clin Radiol* 2001;56:58–63.
- [2] Davidovits M, Eisenstein B, Ziv N, Krause I, Cleper R, Bar-Sever Z. Unilateral duplicated system: comparative length and function of the kidneys. *Clin Nucl Med* 2004;29(2).
- [3] Gundeti MS, Ransley PG, Duffy PG, Cuckow PM, Wilcox DT. Renal outcome following heminephrectomy for duplex kidney. *J Urol* 2005;173:1743–4.
- [4] Williams H. Renal revision: from lobulation to duplication—what is normal? *Arch Dis Child Educ Pract Ed* 2007;92:152–8.
- [5] Eisner B, Shaikh M, Uppot R, Sahani DV, Dretler SP. Genitourinary imaging with noncontrast computerized tomography—are we missing duplex ureters? *J Urol* 2008;179:1445–8.
- [6] Privett JT, Jeans WD, Roylance J. The incidence and importance of renal duplication. *Clin Radiol* 1976;27:521.
- [7] Davda S, Vohra A. Adult duplex kidneys: an important differential diagnosis in patients with abdominal cysts. *J R Soc Med Sh Rep* 2013;4(13).
- [8] Ismaili K, Hall M, Ham H, Piepsz A. Evolution of individual renal function in children with unilateral complex renal duplication. *J Pediatr* 2005;147:208–12.
- [9] Hartman GW, Hodson CJ. The duplex kidney and related abnormalities. *Clin Radiol* 1969;20:387–400.
- [10] Stunell H, Buckley O, Feeney J, Geoghegan T, Browne RFJ, Torreggiani WC. Imaging of acute pyelonephritis in the adult. *Eur Radiol* 2007;17(7):1820–8.
- [11] Hooton T, Bradley SF, Cardenas DD, Colgan R, Geerlings SE, Rice JC, et al. Diagnosis, prevention and treatment of catheter associated urinary tract infection in adults: 2009 International Practice Guidelines. from the Infectious Diseases Society of America. *Clin Infect Dis* 2010;50(5):625–63.
- [12] Kawashima A. Radiologic evaluation of patients with renal infections. *Infect Dis Clin N Am* 2003;17(2):433–56.