

Identification and characterization of expression profiles of neuropeptides and their GPCRs in the swimming crab, *Portunus trituberculatus*

Shisheng Tu, Rui Xu, Menggen Wang, Xi Xie, Chenchang Bao and Dongfa Zhu
School of Marine Science, Ningbo University, Ningbo, Zhejiang, China

ABSTRACT

Neuropeptides and their G protein-coupled receptors (GPCRs) regulate multiple physiological processes. Currently, little is known about the identity of native neuropeptides and their receptors in *Portunus trituberculatus*. This study employed RNA-sequencing and reverse transcription-polymerase chain reaction (RT-PCR) techniques to identify neuropeptides and their receptors that might be involved in regulation of reproductive processes of *P. trituberculatus*. In the central nervous system transcriptome data, 47 neuropeptide transcripts were identified. In further analyses, the tissue expression profile of 32 putative neuropeptide-encoding transcripts was estimated. Results showed that the 32 transcripts were expressed in the central nervous system and 23 of them were expressed in the ovary. A total of 47 GPCR-encoding transcripts belonging to two classes were identified, including 39 encoding GPCR-A family and eight encoding GPCR-B family. In addition, we assessed the tissue expression profile of 33 GPCRs (27 GPCR-As and six GPCR-Bs) transcripts. These GPCRs were found to be widely expressed in different tissues. Similar to the expression profiles of neuropeptides, 20 of these putative GPCR-encoding transcripts were also detected in the ovary. This is the first study to establish the identify of neuropeptides and their GPCRs in *P. trituberculatus*, and provide information for further investigations into the effect of neuropeptides on the physiology and behavior of decapod crustaceans.

Submitted 31 May 2021
Accepted 29 August 2021
Published 15 September 2021

Corresponding authors
Chenchang Bao,
baochenchang@nbu.edu.cn,
baocc203@163.com
Dongfa Zhu, zhudongfa@nbu.edu.cn

Academic editor
Khor Waiho

Additional Information and
Declarations can be found on
page 25

DOI 10.7717/peerj.12179

© Copyright
2021 Tu et al.

Distributed under
Creative Commons CC-BY 4.0

OPEN ACCESS

Subjects Aquaculture, Fisheries and Fish Science, Bioinformatics, Marine Biology, Molecular Biology, Zoology

Keywords Neuropeptides, GPCRs, Expression, *Portunus trituberculatus*

INTRODUCTION

Numerous neuropeptides have pleiotropic function molecules that are involved in reproduction, development, stress response, immune response, and metabolism (Buratti et al., 2013; Chen et al., 2018; Liu et al., 2019b; Xu et al., 2020; Yang et al., 2014). Several neuropeptides play an essential role in controlling ovarian maturation. These neuropeptides include molt-inhibiting hormone (MIH) (Luo et al., 2015), short neuropeptide F (sNPF) (Bao et al., 2018a), red pigment concentrating hormone (RPCH) (Zeng et al., 2016) and neuropeptide F(NPF) (Tinikul et al., 2017). Notably, MIH and NPF may be promising candidates to induce spawning in *Litopenaeus vannamei* (González et al., 2010) and *Macrobrachium rosenbergii* (Tinikul et al., 2017), respectively. Although the draft genome

of *P. trituberculatus* is available, the molecular mechanisms of neuropeptides that regulate reproduction are unknown (Tang et al., 2020).

Neuropeptides predominantly bind to G protein-coupled receptors (GPCRs) to exhibit their functions (Sharabi et al., 2016). GPCRs are the largest gene family of transducing cell surface proteins. The family consists of an extracellular N-terminus, a region of seven transmembrane (7-TM) domains, and an intracellular C-terminus (Davies et al., 2007). The arthropod GPCR gene family is subdivided into four classes, including rhodopsin-like receptors (class A), secretin-like receptors (class B), metabotropic glutamate-like receptors (class C), and atypical GPCRs based on sequence motifs (Brody & Cravchik, 2000). It is challenging to identify GPCRs in related species because these sequences generally do not share as high an overall sequence homology as neuropeptides do (Caers et al., 2012). In decapod crustaceans, several efforts had been made to identify neuropeptide GPCR genes; however, only eight species of GPCRs, including *Scylla paramamosain* (Bao et al., 2018b), *Sagmariasus verreauxi* (Buckley et al., 2016), *Panulirus argus* (Christie, 2020), *Carcinus maenas* (Oliphant et al., 2018), *Paranephrops zealandicus* (Oliphant et al., 2020), *Macrobrachium nipponense* (Sun et al., 2020), *Penaeus monodon* (Viet Nguyen et al., 2020) and *Nephrops norvegicus* (Nguyen et al., 2018), have been reported in previous studies or deposited in public databases. Many putative neuropeptide receptors have been tentatively identified on the basis of homology, but only a handful have been functionally deorphaned in crustaceans (Alexander et al., 2018; Bao et al., 2018a; Bao et al., 2018b). Therefore, it is necessary to identify GPCRs to explore the function of neuropeptides in *P. trituberculatus*.

Advances in Next Generation Sequencing (NGS) have resulted in identification of neuropeptide repertoire of several decapod species, such as *S. paramamosain* (Bao et al., 2015), *Cherax quadricarinatus* (Nguyen et al., 2016), *N. norvegicus* (Nguyen et al., 2018), *C. maenas* (Oliphant et al., 2018), *Procambarus clarkia* (Veenstra, 2015), and *M. nipponense* (Sun et al., 2020), based on transcriptome databases. However, currently, no information is available for identification of neuropeptides and GPCRs in *P. trituberculatus*. Therefore, identification of neuropeptides and GPCRs represents an important step to unravel the roles of these molecules involved in reproduction.

The swimming crab, *Portunus trituberculatus* (Crustacea: Decapoda: Brachyura) is common edible crab. It is widely distributed in the estuary and coastal waters of Korea, Japan, China, and Southeast Asia (Meng et al., 2020). The only neuropeptides reported in this species include CHH (Xie et al., 2014), MIH (Wang et al., 2013), and CCAP (Sun et al., 2019). In addition, no studies have reported the *P. trituberculatus* neuropeptidome. In this study, a total of 47 transcripts encoding putative neuropeptides and 47 predicted GPCR-encoding transcripts in *P. trituberculatus* were identified based on the CNS transcriptome database. Potential neuropeptides and GPCRs were screened for tissue spatial expression by Reverse transcription-polymerase chain reaction (RT-PCR) and showed that their roles might be involved in regulation of reproduction in *P. trituberculatus*. The findings of this study provide insights into neuropeptide/GPCR signaling pathways that regulate reproduction in *P. trituberculatus*.

MATERIALS AND METHODS

Animals

Crab study protocol was approved by the Animal Ethics Committee of Ningbo University. Healthy swimming crabs (female: 300–350 g; male: 200–250 g) were purchased from the local fisheries market in Zhenhai District, Ningbo City, Zhejiang Province, China. All crabs are in the intermolt stage by observing their morphological characteristics as previously described (*Shen et al., 2011*). Three female and two male crabs were randomly selected and anesthetized on ice for 20 min before dissection. The cerebral ganglia, eyestalk ganglia and ventral ganglia were then removed surgically, frozen immediately in liquid nitrogen, and stored at -80°C for further use.

Sample preparation and transcriptome sequencing

Five individual samples from each crab were pooled for extraction of total RNA using Trizol Reagent (Takara) following the manufacturer's instructions. Genomic DNA was removed using DNase I (Takara). Integrity and purity of RNA were determined using Agilent Bioanalyzer 2100 system (Agilent Technologies, Santa Clara, CA, USA) and the NanoPhotometer[®] spectrophotometer (IMPLEN, CA, USA), respectively. High-quality RNA samples ($\text{OD}_{260/280} = 1.8\text{--}2.2$, $\text{OD}_{260/230} > 2.0$) were used for construction of sequencing library. Sequencing libraries were generated using NEBNext[®] Ultra[™] RNA Library Prep Kit for Illumina[®] (NEB, USA), following the manufacturer's recommendations. Index codes were used to attribute sequences to each sample. cDNA libraries were then sequenced on an Illumina HiSeq 4000 platform (Illumina, USA) and paired-end reads were generated. Raw reads were processed through a Perl program for quality control. Clean data were obtained by removing reads containing adapter, reads containing ploy-N and low-quality reads from raw data. In addition, Q20, Q30, GC-content and sequence duplication level of the clean data were calculated. Transcriptome assembly was performed using Trinity with `min_kmer_cov` set to 2 and all other parameters set default (*Grabherr et al., 2011*).

Bioinformatic Analysis of neuropeptides and their receptors

Peptides and their receptors were obtained from swimming crab, one transcriptome was assembled from all the ganglia combined. A well-established workflow was used to identify peptides (*Bao et al., 2015*). NCBI BLAST was used to re-validate the sequences. The nucleotide sequences were then converted to amino acids using ExPASy translate tool available online (<https://web.expasy.org/translate/>) and open reading frames (ORFs) were obtained using ORF finder webserver (<https://www.ncbi.nlm.nih.gov/orffinder>). All predicted precursors were assessed for the presence of a signal peptide using SignalP5.0 webserver (<http://www.cbs.dtu.dk/services/SignalP/>). Cysteine to cysteine disulfide bridges were predicted using a webserver (<http://disulfind.disi.unitn.it/>). Structures of mature peptides were predicted using a well-established workflow (*Christie, 2014; Christie & Chi, 2015*) and prohormone cleavage sites prediction based on the standards defined by Veenstra (*Veenstra, 2000*). Other post-translational modifications, including cyclization of N-terminal glutamine or glutamic acid residues and C-terminal amidation at glycine

residues were predicted through homologous comparison to known arthropod peptides (Bao et al., 2020; Bao et al., 2015; Christie, 2014; Christie, 2016a; Christie, 2016b; Christie, 2020; Christie & Chi, 2015; Christie et al., 2017; Johnson et al., 2015; Nguyen et al., 2018; Vaudry et al., 2014; Veenstra, 2015; Veenstra, 2016; Wegener et al., 2015; Xu et al., 2015). Illustrator for Biological Sequences (IBS) software was used to generate schematic diagrams of protein domain structures (Ren et al., 2009). Multiple sequence alignments were done using ClustalX. Multiple alignment files were imported to Jalview 2.10.5 software to identify conserved sequence motifs and the LOGO.

GPCR transcript sequences obtained from CNS transcriptomes of *P. trituberculatus*, were translated using the translate tool in ExpASY and assessed for completeness (predicted protein sequences <150 amino acids in length were deemed too short for accurate vetting and were not reported in this article) (Christie & Yu, 2019). The protein sequences were revalidated by BLAST. GPCR sequences were identified using GPCRHMM webserver (<https://gpcrhmm.sbc.su.se/>) and only sequences containing seven transmembrane domains (7TM) were retained (Bao et al., 2018b). To further annotate the *P. trituberculatus* GPCRs for phylogenetic analysis, 7TM domains of all GPCRs (those from this study and previously characterized receptors) were extracted and compiled into one list (Supplemental Information 1). Phylogenetic trees were constructed using SeaView software (Gouy, Guindon & Gascuel, 2009) (PhyML algorithm) and visualized with Figtree v1.4.3 and Adobe Photoshop CS (version 6.0).

Tissue expression of neuropeptides and determination of GPCRs of interest by RT-PCR

To explore tissue expression of neuropeptide transcripts and their GPCR transcripts, nine tissues, including cerebral ganglia, eyestalk ganglia, gill, hepatopancreas, heart, muscle, ovary, ventral ganglia, and Y-organ were harvested from wild female *P. trituberculatus* ($n = 3$). All crabs are in ovarian development stage III based on the gonadosomatic index (GSI%, ovary weight $\times 100$ /body weight) and external features of the ovary (Wu et al., 2007). Total RNA from tissues was extracted using RNA-Solv Reagent (Omega Biotek, USA), following the manufacturer's protocol. Total RNA ($\sim 1 \mu\text{g}$ RNA per tissue) was used for cDNA synthesis using HiFiScript gDNA Removal cDNA Synthesis Kit (CW BIO, China). A total of 32 neuropeptide transcripts, 33 GPCR transcripts, and one housekeeping gene were chosen for RT-PCR. Gene-specific primers were designed using primer 5.0 software based on the CDS of transcripts. Primers used in this article are presented in Supplemental Information 2. RT-PCRs amplifications were carried out using a touch-down PCR to allow maximum PCR products to be amplified with minimal non-specific signal., PCR settings were as follows: 95 °C for 3 min, followed by 35 cycles of touch down, 95 °C for 30 s, 62–57 °C for 30 s (with 1 °C decrease for each of the first 6 cycles) and 72 °C for 20 s. PCR products were separated on 2.0% agarose gel electrophoresis and visualized using GelRed (Biotium).

RESULTS AND DISCUSSION

Identification of neuropeptide transcript and peptide prediction

Cerebral ganglia, eyestalk ganglia, and ventral ganglia, each consisting of two males and three females, were used for transcriptome sequencing to identify neuropeptides in *P. trituberculatus*. All raw reads were submitted to the NCBI SRA under accession: BioProject number [PRJNA707143](#) ([SRR13870345](#), [SRR13870346](#) and [SRR13870347](#)). Quality, *de novo* assembly statistics and annotation summary data are shown in [Supplemental Information 3](#). A total size of 124,237,692 bp of the assembled transcripts were obtained with an average size of 1,784 bp and half of the contigs N50 were at least 3,185 bp long. The shortest and longest assembled sequences were 301 and 28,583 bp, respectively. A total of 47 predicted neuropeptide transcripts and 47 peptide GPCR transcripts were identified using bioinformatics tools, containing 39 A-family GPCRs (Pt-GPCR-A) and 8 B-family GPCRs (Pt-GPCR-B), from central nervous system (CNS, including cerebral ganglia, eyestalk ganglia and ventral ganglia) of *P. trituberculatus*. Most of the neuropeptides were previously identified in other crustacean and/or insect species ([Table 1](#)). Predicted peptides included: adipokinetic hormone corazonin-like peptide (ACP), agatoxin-like peptide (ALP), allatostatin A (AST-A), allatostatinB (AST-B), allatostatin C (AST-C), allatostatin CCC (AST-CCC), bursicon, crustacean cardioactive peptide (CCAP), crustacean hyperglycemic hormone (CHH)/molt-inhibiting hormone (MIH), CCHamide (CCH), crustacean female sex hormone (CFSH), corazonin (Crz), CNMamide (CNM), CRF-like DH44, calcitonin-like diuretic hormone31 (DH31), Carcikinin/ecdysis triggering hormone (ETH), elevenin, glycoprotein-A2 (GPA2), glycoprotein-B5 (GPB5), GSEFLamide, HIGSLYRamide, insulin-like peptide (ILP), kinin, myosuppressin, neuroparsin (NP), neuropeptide F (NPF), short neuropeptide F (sNPF), vasopressin, orcokinin, pigment-dispersing hormone (PDH), proctolin, pyrokinin, red pigment-concentrating hormone (RPCH), RYamide, SIFamide, sulfakinin (SK), tachykinin (TK), Trissin, and Natalisin. Most of these neuropeptides are present in related crustaceans, such as *S. paramamosain* ([Bao et al., 2015](#)), *S. olivacea* ([Christie, 2016b](#)) and *C. maenas* ([Oliphant et al., 2018](#)). Sequence alignments between the precursors from these species showed that all peptides, especially the mature peptides, are conserved. For instance, the predicted mature peptides of Carcikinin (DAGHFFAETPKHLPRIAMide), CCAP (PFCNAFTGCamide), and AST-C (pQIRYHQCYFNPISCF) were highly conserved. This suggests that prediction of the putative peptide sequences in this study are mostly accurate.

Adipokinetic hormone–corazonin like peptide (ACP)/Agatoxin-like peptide (ALP)/Allatostatin (AST)/Bursicon and CCAP

A putative ACP precursor was predicted from the *de novo* transcriptome of *P. trituberculatus* central nervous system. The predicted encoded complete ACP precursor of 101 amino acids (aa), with 12 aa mature peptides, pQITFSRSWVPQamide ([Supplemental Information 4](#) and [Fig. 1A](#)), is a highly conserved decapod ACP peptide ([Christie, 2016a](#); [Christie, 2016b](#); [Christie & Chi, 2015](#)). One Pt-ALP transcript was identified in the current *de novo* transcriptome assembly of *P. trituberculatus*. The transcript

Table 1 Putative neuropeptide precursors predicted in the central nervous-system transcriptome of *P. trituberculatus*.

Peptide families	Transcriptome size (bp)	ORF size (aa)	BLAST matches species	E-value	Ident	Accession number
ACP	722	101	<i>Scylla olivacea</i>	3.15E-52	95.29%	<i>Christie (2016a), Christie (2016b)</i>
agatoxin-like	892	113	<i>Penaeus vannamei</i>	1.00E-42	71.68%	XP027234917.1
allatostatinA	3195	659	<i>Panulirus interruptus</i>	0.00E+00	52.87%	BAF64528.1
allatostatinB	1826	314	<i>Portunus trituberculatus</i>	0.00E+00	100%	QCI34367.1
allatostatinC	1178	149	<i>Scylla paramamosain</i>	9.00E-81	91.28%	ALQ28578.1
allatostatinCCC	1782	110	<i>Scylla paramamosain</i>	1.00E-74	100%	ALQ28598.1
bursicon- α	2624	148	<i>Callinectes sapidus</i>	6.00E-102	97.30%	ACG50067.1
bursicon- β	557	141	<i>Callinectes sapidus</i>	4.00E-79	86.62%	ACG50066.1
CCAP	660	141	<i>Portunus trituberculatus</i>	4.00E-100	100%	AVK43051.1
CHH1	1245	139	<i>Portunus trituberculatus</i>	5.00E-100	100%	ACB46189.1
CHH2	2190	135	<i>Portunus trituberculatus</i>	1.00E-91	100%	MPC59687.1
MIH	7048	113	<i>Portunus trituberculatus</i>	3.00E-78	100%	MPC23433.1
CCHamide1	3469	189	<i>Cherax quadricarinatus</i>	1.00E-11	61.40%	AWK57506.1
CCHamide2	784	126	<i>Nephrops norvegicus</i>	8.00E-20	45.54%	QBX89034.1
CFSH	1466	C	<i>Callinectes sapidus</i>	2.00E-155	93.72%	ADO00266.1
corazonin	905	117	<i>Carcinus maenas</i>	3.00E-48	78.30%	AVA26882.1
CNMamide	1348	193	<i>Scylla olivacea</i>	2.00E-117	97.93%	<i>Christie (2016a), Christie (2016b)</i>
CRF-like_DH44	1693	321	<i>Cherax quadricarinatus</i>	1.00E-26	77.94%	AWK57510.1
DH31	449	111	<i>Nephrops norvegicus</i>	8.00E-15	68.89%	QBX89032.1
ETH	1373	136	<i>Scylla olivacea</i>	4.06E-72	94.11%	<i>Christie (2016a), Christie (2016b)</i>
elevenin	1803	147	<i>Carcinus maenas</i>	1.40E-75	85.71%	<i>Christie (2016a)</i>
GPA2	1436	120	<i>Cherax quadricarinatus</i>	3.00E-75	87.50%	AWK57521.1
GPB5	2007	228	<i>Cherax quadricarinatus</i>	2.00E-79	86.51%	AWK57522.1
GSEFLamide	1388	358	<i>Homarus americanus</i>	3.00E-146	68.82%	AYH52118.1
HIGSLYRamide	2811	758	<i>Cherax quadricarinatus</i>	3.00E-51	37.08%	AWK57523.1
ILP	757	167	<i>Nephrops norvegicus</i>	1.00E-26	42.29%	QBX89050.1
kinin	2173	336	<i>Scylla paramamosain</i>	8.00E-174	87.78%	ALQ28594.1
myosuppressin	806	100	<i>Scylla paramamosain</i>	1.00E-67	100%	ALQ28580.1
neuroparsin	2108	102	<i>Portunustrituberculatus</i>	2.00E-67	100%	AVK43050.1
neuroparsin2	814	102	<i>Scylla paramamosain</i>	2.00E-51	95.88%	ALQ28589.1
neuroparsin3	1494	110	<i>Nephrops norvegicus</i>	2.00E-12	44.87%	QBX89061.1
NPF1	1454	102	<i>Scylla paramamosain</i>	3.00E-64	96.08%	ALQ28586.1
NPF2	1080	131	<i>Scylla paramamosain</i>	3.00E-62	84.73%	ALQ28587.1
sNPF	1498	126	<i>Scylla paramamosain</i>	2.00E-86	96.83%	ALQ28574.1
vasopressin	838	158	<i>Portunus pelagicus</i>	2.00E-106	98.10%	AUT12056.1
orcokinin	1175	181	<i>Cancer borealis</i>	3.00E-116	93.92%	ABY82345.1
PDH1	433	79	<i>Nephrops norvegicus</i>	1.00E-25	63.29%	QBX89064.1
PDH2	520	78	<i>Scylla paramamosain</i>	4.00E-27	98.72%	ALQ28583.1
proctolin	920	94	<i>Nephrops norvegicus</i>	1.00E-22	64.86%	QBX89067.1
pyrokinin	1598	338	<i>Scylla paramamosain</i>	0.00E+00	85.67%	ALQ28575.1
RPCH	877	110	<i>Portunus trituberculatus</i>	3.00E-68	100%	MPC25086.1
RYamide	880	134	<i>Nephrops norvegicus</i>	3.00E-50	63.04%	QBX89071.1
SIFamide	1171	78	<i>Scylla paramamosain</i>	1.00E-47	98.72%	ALQ28576.1
Sulfakinin	839	165	<i>Scylla paramamosain</i>	2.00E-40	84.25%	ALQ28597.1
tachykinin	915	226	<i>Scylla paramamosain</i>	6.00E-103	82.53%	ALQ28591.1
trissin	1341	201	<i>Cherax quadricarinatus</i>	1.00E-31	44.67%	AWK57547.1
natalisin	1521	375	<i>Scylla paramamosain</i>	0.00E+00	86.70%	ALQ28592.1

Notes.

C, C-terminal partial protein

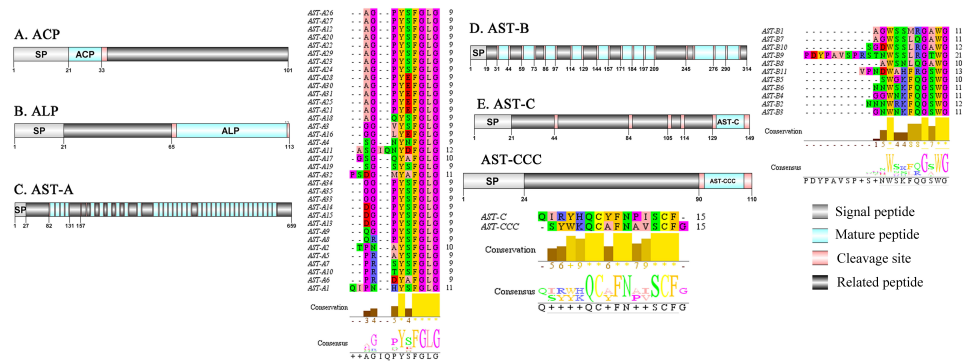


Figure 1 Identification and molecular characterization of *P. trituberculatus* ACP (A), ALP (B), AST-A (C), AST-B (D) and AST-C/AST-CCC (E). Schematic diagrams show structures of neuropeptide precursors, including signal peptide (SP), mature peptide, putative cleavage sites, and related peptide. Predicted mature peptide amino acid sequence of AST-A, AST-B, and AST-C/AST-CCC have been aligned using Clustal X2.1, shown conserved sequence motifs by Jalview 2.10.5.

Full-size [DOI: 10.7717/peerj.12179/fig-1](https://doi.org/10.7717/peerj.12179/fig-1)

encodes for 113 aa protein, with 21aa signal peptide. *PtALP* has two cleavage sites (K₆₆K and K₁₁₃), which if processed results in cleavage of the mature peptide WRSCIRRGACDHRPNDCCYNSSRCNLTGTCRCQRMGIFQQWamide. It has 8 cysteine residues that presumably allow for the formation of four identically positioned disulfide bridges (Supplemental Information 4 and Fig. 1B), and amidated C-terminus which are characteristic of decapod species (Christie *et al.*, 2020). Based on their distinct structural differences, allatostatins are classified into three different families (A-type, B-type and C-type) (Stay & Tobe, 2007; Verlinden *et al.*, 2015). In crustaceans, the existence of AST-As, AST-Bs and AST-Cs were first identified from *Cancer borealia* (Skiebe & Schneider, 1994), *Cancer productus* (Fu *et al.*, 2005), *Homarus americanus* (Ma *et al.*, 2009b), respectively. A total of 4 transcripts were detected that encoded for the precursor of AST family including, AST-A, AST-B, AST-C, and AST-CCC. The precursor AST-A had a region of the predicted signal peptide (27 aa), followed by 35 predicted peptides separated by multiple dibasic cleavage sites. The conserved motif recorded was XYXFGLamide (Supplemental Information 4 and Fig. 1C), such as AGPYSFGLamide sequence, which is common in insects and other crustaceans in the AST-A family (Bao *et al.*, 2015; Christie, Stemmler & Dickinson, 2010; Stay & Tobe, 2007). A single transcript was observed in the transcriptome assembly. The putative neuropeptide precursor encoded 314 aa and has a 19 aa signal peptide. This precursor had 11 predicted mature peptides, containing the conserved XWXXXXGXWamide motif (Supplemental Information 4 and Fig. 1D), such as AGWSSMRGAWamide sequence, which is a signature motif in the AST-B family (Christie, Stemmler & Dickinson, 2010). The predicted sequence of the AST-C precursor comprised 149 aa with a predicted signal peptide of 21 aa. The predicted mature peptide had 15aa, with a highly conserved PISCF motif with pQIRYHQCYFNIPISCF (a disulfide bridge between two cysteine residues) sequence (Bao *et al.*, 2020; Bao *et al.*, 2015; Ma *et al.*, 2009b; Nguyen *et al.*, 2016). AST-CCC precursor showed a 110aa complete sequence, 24aa signal peptide and 15aa mature peptide (Supplemental Information 4 and Fig. 1E). An

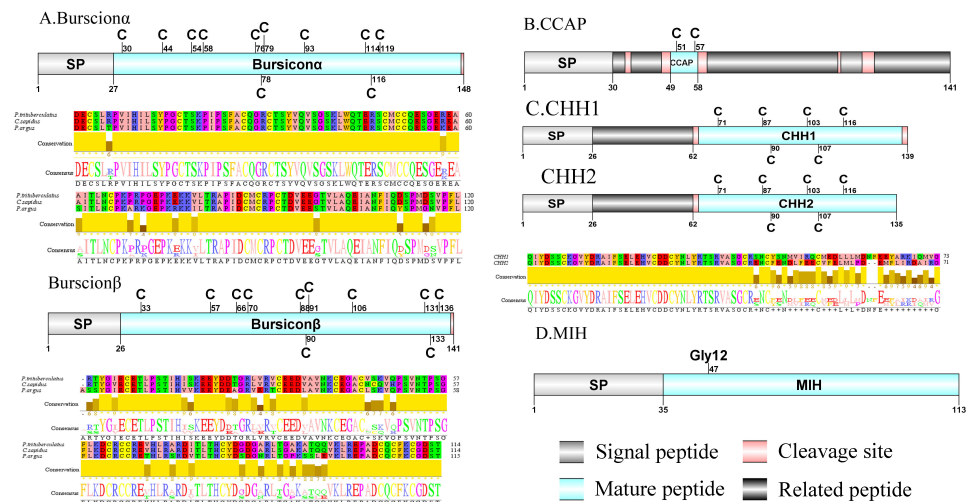


Figure 2 Identification and molecular characterization of *P. trituberculatus* bursicon α /bursicon β (A), CCAP (B), CHH1/CHH2 (C), and MIH (D). Schematic diagrams show structure of neuropeptide precursors, including signal peptide (SP), mature peptide, putative cleavage sites and related peptide. Comparative mature peptide sequence alignment of bursicon α and bursicon β for *P. trituberculatus* with *C. sapidus* and *P. argus* respectively. Predicted mature peptide amino acid sequence of CHH1/CHH2 has been aligned using ClustalX2.1, shown conserved sequence motifs by Jalview 2.10.5.

Full-size [DOI: 10.7717/peerj.12179/fig-2](https://doi.org/10.7717/peerj.12179/fig-2)

AST-C-like peptide precursor, was also detected in *P. trituberculatus*. The AST-CCC shares a conserved motif (SYWKQCAFNAVSCFamide) with the AST-C sequence (Supplemental Information 4 and Fig. 1E). In crustaceans, the first isoform of bursicon was identified from *C. maenas* (Ma et al., 2009a; Wilcockson & Webster, 2008). In the transcriptome assembly, two transcripts, which encoded bursicon alpha and bursicon beta, precursor of 148 aa and 141 aa, respectively, were obtained. The two precursors had a signal peptide, immediately followed by adjacent mature peptide with 11 conserved cysteine residues (Supplemental Information 4 and Fig. 2A). The structures of the mature peptides were highly conserved across other decapod crustaceans, such as *Callinectes sapidus* and *P. argus* (Christie, 2020). CCAP was originally identified from *C. maenas* via reverse phase high-performance liquid chromatography (RP-HPLC) procedure (Stangier et al., 1987) and the first CCAP transcript was predicted in *Daphnia pulex* via transcriptomics (Gard et al., 2009). In this study, One transcript was predicted to encode CCAP precursor of 141 aa, containing a predicted signal peptide of 30 aa and two cleavage sites (K₄₇R and K₅₉K). The peptide released a mature peptide with PFCNAFTGCamide (a disulfide bridge between two cysteine residues) motif sequence (Supplemental Information 4 and Fig. 2B).

Crustacean hyperglycemic hormone (CHH)/Molt-inhibiting hormone (MIH)/Crustacean female sex hormone (CFSH)/CCHamide (CCH) and Corazonin (Crz)

CHH was first purified and sequenced from eyestalks of *C. maenas* (Kegel et al., 1989). In 2006, CHH splice variants have confirmed in *C. sapidus* (Choi, Zheng & Watson, 2006). Two transcripts were identified to putatively encode complete CHH precursors with 139 aa

and 135 aa. Pt-CHH1 and Pt-CHH2 are products of alternative splicing. All two complete sequences consist of 26 aa signal peptide, a CHH-precursor-related peptide (CPRP) and CHH mature peptides with 71 aa and 73 aa, respectively (Supplemental Information 4 and Fig. 2C). The two mature peptides had six cysteine residues, and the six cysteines were aligned (Fig. 2C). Characteristics of these peptides were similar as we previously studied (Xie et al., 2014). The first putative MIH was isolated and sequenced in *C. maenas* (Klein et al., 1993). The predicted sequence of the MIH precursor comprised 113 aa, with 35 aa signal peptide. The sequence lacked CHH-PRP and had an additional conserved glycine in position 12 of the putative mature peptide (Gly₁₂) (Supplemental Information 4 and Fig. 2D). In addition, the mature peptide had six cysteine residues and could form three disulfide bridges, which is a characteristic of CHH family. Two transcripts of CCH precursors were identified in the *de novo* transcriptome assembly of *P. trituberculatus*. The two transcripts encode for 189 aa and 126 aa, each with a signal peptide (Supplemental Information 4 and Fig. 3A). The conserved motif for Pt-CCHamide mature peptide was XCXXY/FGHSCXGAHamide (a disulfide bridge between two cysteine residues), which is conserved in other decapod species, such as *C. quadricarinatus* (Nguyen et al., 2016) and *P. clarkia* (Veenstra, 2015). CFSH was initially isolated from sinus glang (SG) of *C. sapidus* via RP-HPLC chromatograms and subsequently cDNA was cloned in this species (Zmora & Chung, 2014). A putative CFSH transcript with partial C-terminus of 223 aa was predicted from the central nervous system of *P. trituberculatus*. The precursor CFSH had a region of the predicted signal peptide (22 aa) and a K₅₅R cleavage site, followed immediately by the mature peptide of 167 aa (Supplemental Information 4 and Fig. 3B). The mature peptide had eight cysteine residues, which were conserved in other decapod CFSHs (Veenstra, 2016). The first Crz sequence was identified in *C. borealis* via mass spectrometry (Li et al., 2003). Also, Crz precursor have been identified via transcriptome analysis from *L. vannamei* (Ma et al., 2010) and *Daphnia carinata* (Christie et al., 2010). A single transcript was identified to putatively encode complete Crz precursor with 117 aa. Crz precursor had a 19 aa signal peptide, followed immediately by the mature peptide, and a R₃₂KR cleavage site (Supplemental Information 4 and Fig. 3C). The conserved motif sequence of Crz mature peptide was pQTFQYSRGWTNamide, a highly conserved Crz motif in other crustaceans and insects (Alexander et al., 2018; Nguyen et al., 2016).

CNMamide(CNM)/CRF-like DH44/Calcitonin-like diuretic hormone 31(DH31)/ Carcikinin/ecdysis triggering hormone(ETH) and Elevelin

A CNMamide transcript was present in the assembly of *P. trituberculatus*. The precursor putatively comprised 193 aa with a 30 aa predicted signal peptide. A 10 aa C-terminal amidated CNMamide mature peptide is released after cleavage of two dibasic cleavage sites (Supplemental Information 4 and Fig. 3D). The predicted mature peptide, VMCHFkICNMamide (a disulfide bridge between two cysteine residues) is conserved in other crustacean species (Veenstra, 2015; Veenstra, 2016). A single transcript was identified which encoded a putative CRF-like DH44 precursor. This transcript encodes a 321 aa full-length protein with a 19 aa predicted signal peptide (Supplemental Information 4 and Fig. 3E). This precursor has a 45 aa mature peptide, with the

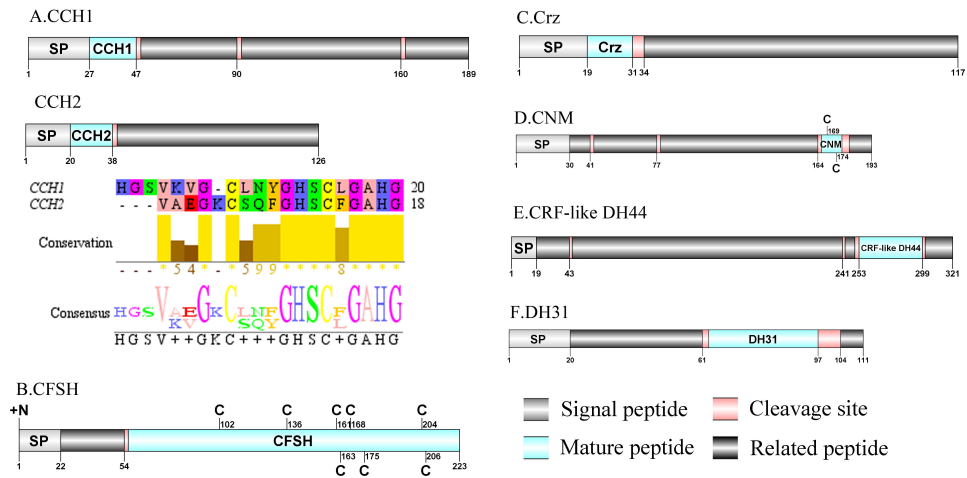


Figure 3 Identification and molecular characterization of *P. trituberculatus* CCH1/CCH2 (A), CFSH (B), Crz (C), CNM (D), CRF-like DH44 (E), and DH31 (F). Schematic diagrams show structure of neuropeptide precursors, including signal peptide. (SP), mature peptide, putative cleavage sites, and related peptide. Predicted mature peptide amino acid sequence of CCH1 and CCH2 have been aligned using Clustal X2.1, shown conserved sequence motifs by Jalview 2.10.5.

Full-size DOI: 10.7717/peerj.12179/fig-3

sequence, NSGLSLSIDASMKVLREALYLEIARKKQRQQLQRAQH NKALLNTIamide, which is conserved in other decapod species, such as *H. americanus* (Christie *et al.*, 2017) and *M. rosenbergii* (Wegener *et al.*, 2015). The first DH31 has been identified from *D. pulex* via transcriptomics (Gard *et al.*, 2009). The predicted sequence of the DH31 precursor comprised 111 aa, with a predicted signal peptide of 20 aa at the N-terminal, two DH31-precursor-related peptides and, dibasic K₆₂R and K₉₈R cleavage sites, that if processed results in release of a DH31 mature peptide (Supplemental Information 4 and Fig. 3F). Pt-DH31 mature peptide is homologous to *N. norvegicus* DH31 (Christie *et al.*, 2009; Nguyen *et al.*, 2018). Carcikinin has previously been identified as a crustacean orthologue of insect ecdysis triggering hormone (ETH) (Veenstra, 2016). The first carcikinin has been predicted from *D. pulex* via transcriptomics (Gard *et al.*, 2009). A complete carcikinin precursor comprised 136aa, with a predicted signal peptide of 19aa, followed immediately by a 16aa mature peptide. The predicted mature peptide had conserved DAGHFFAETPKHLPRamide motif (Supplemental Information 4 and Fig. 4A), which is highly conserved in other decapod species, such as *S. paramamosain* and *M. rosenbergii* (Minh Nhut *et al.*, 2020). The putative transcript encoded a complete elevenin precursor with 147 aa. The precursor had a 27 aa predicted signal peptide, followed by a 20 aa mature peptide, and contained the conserved XXXXDCR-K/R-FVFAPXCRGIIA motif (a disulfide bridge between two cysteine residues) (Supplemental Information 4 and Fig. 4B), present in other crustaceans (Christie *et al.*, 2017; Nguyen *et al.*, 2016).

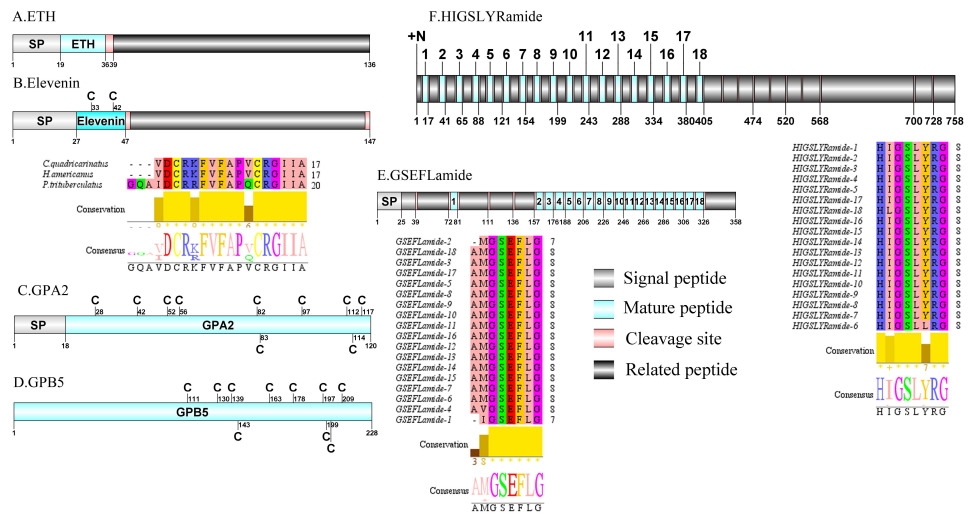


Figure 4 Identification and molecular characterization of *P. trituberculatus* ETH (A), Elevenin (B), GPA2 (C), GPB5 (D), GSEFLamide (E), and HIGSLYRamide (F). Schematic diagrams show structure of neuropeptide precursors, including signal peptide (SP), mature peptide, putative cleavage sites, and related peptide. Comparative mature peptide sequence alignment of elevenin for *P. trituberculatus* with *C. quadricarinatus* and *H. americanus*. Predicted mature peptide amino acid sequence of GSEFLamide and HIGSLYRamide have been aligned using ClustalX2.1, shown conserved sequence motifs by Jalview 2.10.5.

Full-size [DOI: 10.7717/peerj.12179/fig-4](https://doi.org/10.7717/peerj.12179/fig-4)

Glycoprotein-A2 (GPA2)/Glycoprotein-B5 (GPB5)/GSEFLamide (GSE)/HIGSLYRamide and Insulin-like peptide (ILP)

A single transcript was shown to encode GPA2 precursor with 120 aa. The predicted mature peptide of 102 aa was encoded immediately after the predicted signal peptide of 18 aa (Supplemental Information 4 and Fig. 4C). These peptides share highly conserved sequence with other described decapod GPA2 isoforms, for example with 87.5% identity with amino acid sequence to *C. quadricarinatus* GPA2 isoform (Nguyen et al., 2016). Pt-GPA2 mature peptide had 10 cysteine residues, possibly forming 5 disulfide bridges. Analysis of the *P. trituberculatus* GPA2 by DiANNA showed disulfide bridging between the first and tenth, second and eighth, third and fifth, fourth and ninth, and sixth and seventh cysteine residues of the peptide. The peptide sequence was homologous to previously reported decapod GPA2 isoforms (Christie et al., 2017; Christie & Yu, 2019). The nucleotide sequence obtained from the transcriptome data had a 2007 bp putative sequence coding for a complete GPB5 precursor with 228 aa (Supplemental Information 4 and Fig. 4D). The precursor had no predicted signal peptide and the mature peptide had 10 cysteine residues, possibly forming 5 disulfide bridges. Analysis of this GPB5 isoform using DiANNA showed disulfide bridging between its first and tenth, second and fifth, third and fourth, sixth and eighth, and seventh and ninth cysteine residues. The isoform showed high sequence similarity to known decapod GPB5 isoforms, for example 86.51% identity in amino acid sequence to *C. quadricarinatus* GPAB5 isoform (Nguyen et al., 2016). One transcript was identified that encoded a putative GSEFLamide precursor. The precursor encodes for 358 aa, containing a 25 aa predicted signal peptide followed by 18 mature peptides flanked by

Kinin/Myosuppressin/Neuroparsin (NP)/Neuropeptide F (NPF) and Short neuropeptide F (sNPF)

In crustaceans, the first kinin peptide was identified from *Penaeus vannamei* via mass spectrometry (Nieto et al., 1998). The predicted sequence of the kinin precursor was identified in the *de novo* assembly with no signal peptide. The precursor encodes 336 aa and has 12 predicted mature peptides, separated by multiple dibasic cleavage sites (Supplemental Information 4 and Fig. 5B). In addition to the mature peptide of 13 aa, SGDSKHGRFSAWAamide, another 11 mature peptides with 6 to 7 aa in length were identified. These mature peptides had conserved X-F/L-N/S-X-WAamide, e.g., QAFSAWAamide motifs, including QALNVWAamide, which are signature motifs in kinin family (Christie, Stemmler & Dickinson, 2010). In decapod crustaceans, the first myosuppressin has been identified via mass spectrometry (Stemmler et al., 2007). A complete myosuppressin precursor comprised 100 aa with a predicted signal peptide of 24 aa. The precursor had two cleavage sites (K₈₄R and R₉₇), that are processed to release the mature peptide with pQDLDHVFLRFamide sequence (Supplemental Information 4 and Fig. 5C). Pt-myosuppressin had the same motif which is highly conserved in other known crustacean species (Christie, Stemmler & Dickinson, 2010). In crustaceans, the first putative NP encoding transcripts have been predicted in *C. maenas* via transcriptomics (Ma et al., 2009a). Three transcripts were shown to putatively encode complete NP precursors with 102 to 110 aa. All of the precursors had a predicted signal peptide of 25 to 28 aa, followed immediately by 74 to 85 aa mature peptides (Supplemental Information 4 and Fig. 5D). These mature peptides had 12 conserved cysteine residues, possibly forming 6 disulfide bridges, one of which is similar to peptides reported previously in other decapod species (Ma et al., 2010; Veenstra, 2016). In crustaceans, the first putative transcripts encoding NPF have been predicted in *C. maenas* via transcriptomics (Christie et al., 2008). Two transcripts were identified to encode 102 aa (NPF1) and 131 aa (NPF2) peptide precursors. The two precursors had predicted signal peptide of 20 aa and 26 aa, respectively (Supplemental Information 4 and Fig. 5E). The predicted 67 aa (NPF1) and 70 aa (NPF2) mature peptide are encoded immediately after the signal peptide and both have the conserved RPRFamide motif, a signature motif in NPF family (Christie, Stemmler & Dickinson, 2010). The first sNPF was identified from *M. rosenbergii* (Sithigorngul et al., 1998). A transcript of sNPF precursor was identified from the transcriptome data. The precursor encodes 126 aa, containing a 25 aa predicted signal peptide, followed by three dibasic cleavage sites that when processed results in release of three mature sNPF peptides (Supplemental Information 4 and Fig. 5F). The mature peptides were 9 to 12 aa in length and had conserved PXXRLRFamide motifs, including KDARTPALRLRFamide and APPSMRLRFamide which are signature motifs of sNPF family (Christie, Stemmler & Dickinson, 2010).

Vasopressin/Orcokinin/Pigment-dispersing hormone (PDH)/Proctolin and Pyrokinin

The vasopressin was first predicted from *D. pulex* (Stafflinger et al., 2008). A single transcript encoded a complete vasopressin-neurophysin precursor with 158 aa. The

predicted from the central nervous system transcriptome of *P. trituberculatus*, including Pt-PDH-1 and Pt-PDH-2. These precursors encode 79 aa (PDH-1) and 78 aa (PDH-2) peptides, respectively (Supplemental Information 4 and Fig. 6C). The two precursors had a 22 aa signal peptide, followed by a dibasic KR and RR cleavage site that is processed to release a mature 18 aa peptide. The two mature peptides exhibited highly conserved sequences reported in PDH of other known crustacean species (Bao et al., 2015; Christie, Stemmler & Dickinson, 2010; Oliphant et al., 2018). The first proctolin-like peptide has been isolated from pericardial organs in *Cardisoma carnifex* (Sullivan, 1979). Recently, the first putative proctolin-encoding transcript was identified from *L. vannamei* via transcriptomics (Ma et al., 2010). One proctolin precursor 94 aa in length was identified. The precursor had a 23 aa signal peptide followed immediately by the predicted mature peptide (Supplemental Information 4 and Fig. 6D). Pt-Proctolin had a conserved RYLPT motif, completely conserved in other crustacean species (Christie, Stemmler & Dickinson, 2010; Li et al., 2003). In decapods, pyrokinin has been first isolated and identified from *P. vannamei* (Torfs et al., 2001). A pyrokinin transcript was identified that encoded a 338 aa precursor. The precursor encoded a predicted 30 aa signal peptide and 10 mature peptides of 7 to 12 aa flanked by multiple dibasic cleavage sites (Supplemental Information 4 and Fig. 6E). These mature peptides had conserved F-A/S-PR-P/Lamide motif, such as FAPRPamide, FSPRLamide, which were similar to the 5aa conserved in the C-terminal region, and FXPRLamide, which is a signature motif in pyrokinin family (Choi & Vander Meer, 2012).

Red pigment-concentrating hormone (RPCH)/RYamide/SIFamide/Sulfakinin (SK)/Tachykinin (TK)/Trissin and Natalisin

The first RPCH has been purified and chemical structural has also been identified from *Leander adspersus* (Carlsen & Josefsson, 1976). A complete RPCH precursor was predicted from the central nervous system transcriptome. The precursor encoded 110 aa, containing a predicted 25 aa signal peptide, followed immediately by a 9 aa mature peptide and a dibasic cleavage site at K₃₅R (Supplemental Information 4 and Fig. 6F). The mature peptide had a conserved pQLNFSPGWamide motif, which is highly conserved in RPCH of other crustacean species, such as *S. paramamosain* (Zeng et al., 2016) and *L. vannamei* (Chen et al., 2018). The first RYamide has been identified from *Cancer borealis* via mass spectrometry (Li et al., 2003). To date, nothing is known about the bioactivity of this peptide in crustaceans. A single transcript encoding RYamide precursor was identified from the transcriptome data. The precursor encoded 134 aa, including a predicted 25 aa signal peptide and multiple dibasic cleavage sites that when cleaved results in release of three different mature peptides (Supplemental Information 4 and Fig. 7A). These mature peptides share conserved “RYamide” motif, with the sequence FYSQRYamide, which is a RYamide family signature (Christie, Stemmler & Dickinson, 2010). The first SIFamide has been identified from *P. monodon* via RP-HPLC (Sithigorngul et al., 2002). One transcript was identified to encode a complete SIFamide precursor with 78 aa. The precursor had a predicted 27 aa signal peptide followed immediately by the mature peptide with a C-terminal dibasic cleavage site (K₄₁R) (Supplemental Information 4 and Fig. 7B). The mature

2010). A complete trissin precursor transcript 201 aa long was identified. The precursor encoded a predicted signal peptide of 24 aa, followed immediately by a 29 aa mature peptide (Supplemental Information 4 and Fig. 7E). The predicted trissin peptide had a conserved STVSCDSCGPECQTACGTKNFRACCFNFL motif with six cysteine residues, possibly forming three disulfide bridges. Disulfide bridges were predicted using DiANNA between the first and sixth, second and fourth, and third and fifth cysteine residues. This characteristic motif of Pt-trissin has been reported previously in other crustacean species, such as *H. americanus* (Christie et al., 2017), *P. clarkia* (Veenstra, 2015) and other transcriptomes with trissin annotated (Bao et al., 2020; Veenstra, 2016). The nucleotide sequence produced from the transcriptome data showed a 1521 bp putative coding for a complete WXXXRamide precursor with 375 aa. The precursor comprised a predicted signal peptide of 20 aa and multiple dibasic cleavage sites that results in release of 12 mature WXXXRamide peptides with 8 to 17 aa (Supplemental Information 4 and Fig. 7F). These mature peptides had a conserved WXXX_nRamide (where X_n represents a glycine or nothing) motif.

Lost neuropeptide transcripts in the CNS transcriptome of *P. trituberculatus*

Notably, no transcripts encoding putative allatotropin, EH, and FLRFamide precursors were identified from the *P. trituberculatus* transcriptome. Allatotropin (AT) neuropeptide is a ubiquitous bioactive molecule that stimulates juvenile hormone production by *corpora allata* in insects (Bednár et al., 2017; Elekonich & Horodyski, 2003). Currently, no studies have explored on juvenile hormone in crustacean species. In addition, no study has reported AT receptor in *P. trituberculatus* transcriptome. Lack of identification of an AT signaling system in *P. trituberculatus* implies that this peptide group has been lost during evolution in decapod crustaceans (Bao et al., 2015; Christie & Pascual, 2016; Christie et al., 2020; Christie et al., 2017; Christie & Yu, 2019; Fu et al., 2005; Nguyen et al., 2018; Veenstra, 2016). EH was originally identified as a brain-derived hormone that is synthesized in ventromedial disposition in the brains of most insects (Horodyski, Riddiford & Truman, 1989). This peptide might play a role in regulation of ecdysis, a common physiological process in insects (Scott et al., 2020). Identification of EH precursors in other members of the Portunidae, such as *S. paramamosain* (Bao et al., 2015) and *S. olivacea* (Christie, 2016b), implies that these signaling systems are likely to be present in *P. trituberculatus*. A putative EH transcript was identified in the testis transcriptome database of *P. trituberculatus* (Supplemental Information 7). In insects, FLRFamide is reported in endocrine and paracrine cells of the midgut (Kingan et al., 1997), however, only a few decapod crustacean species have been reported to harbor these peptides in CNS (Bao et al., 2015; Liu et al., 2019c). Analysis showed that the peptides were expressed in different tissue among diverse species. Therefore, FLRFamide expression in CNS might not have been similar as that in *S. paramamosain*. Differences in expressions may explain the absence of this neuropeptide in the transcriptome of *P. trituberculatus*. Therefore, studies should analyze midgut RNA-seq data to explore expression of this neuropeptide.



Figure 8 Phylogeny of the A-family neuropeptide GPCRs. Cladogram of neuropeptide GPCRs showing connections in the clustermap of A-family neuropeptide receptors. Pt-GPCR, *Portunus trituberculatus* GPCR; Sp-GPCR, *Scylla paramamosain* GPCR; Bm-GPCR, *Bombyx mori* GPCR; Dp-GPCR, *Daphnia pulex* GPCR; Dm-GPCR, *Drosophila melanogaster* GPCR; Nn-GPCR, *Nephrops norvegicus* GPCR; NI-GPCR, *Nilaparvata lugens* GPCR; Pc-GPCR, *Procambarus clarkia* GPCR; Sv-GPCR, *Sagmariasus verreauxi* GPCR; Tu-GPCR, *Tetranychus urticae* GPCR; Zn-GPCR, *Zootermopsis nevadensis* GPCR; Tc-GPCR, *Tribolium castaneum* GPCR.

Full-size DOI: 10.7717/peerj.12179/fig-8

Neuropeptide GPCRs prediction

A total of 47 candidate neuropeptide GPCR transcripts were predicted from *P. trituberculatus*. In order to identify orthologs for these GPCRs, deorphanized neuropeptide GPCRs from crustaceans and insects were collected as main reference sequences. Analysis of the phylogenetic tree of these GPCRs, 39 belonged to the A-family (Fig. 8), and eight belonged to the B-family (Fig. 9). However, the receptors for insulin-like peptides (ILPs) and neuroparsin (NP) are not GPCRs (Brogiolo *et al.*, 2001; Vogel, Brown & Strand, 2015). In addition, the receptors for CFSH and orckinin have not been currently identified in crustaceans.

A-family GPCRs

In *P. trituberculatus*, 39 A-family neuropeptide GPCRs were identified. It is relatively small putative A-family GPCR transcripts in the swimming carb compare with those identified

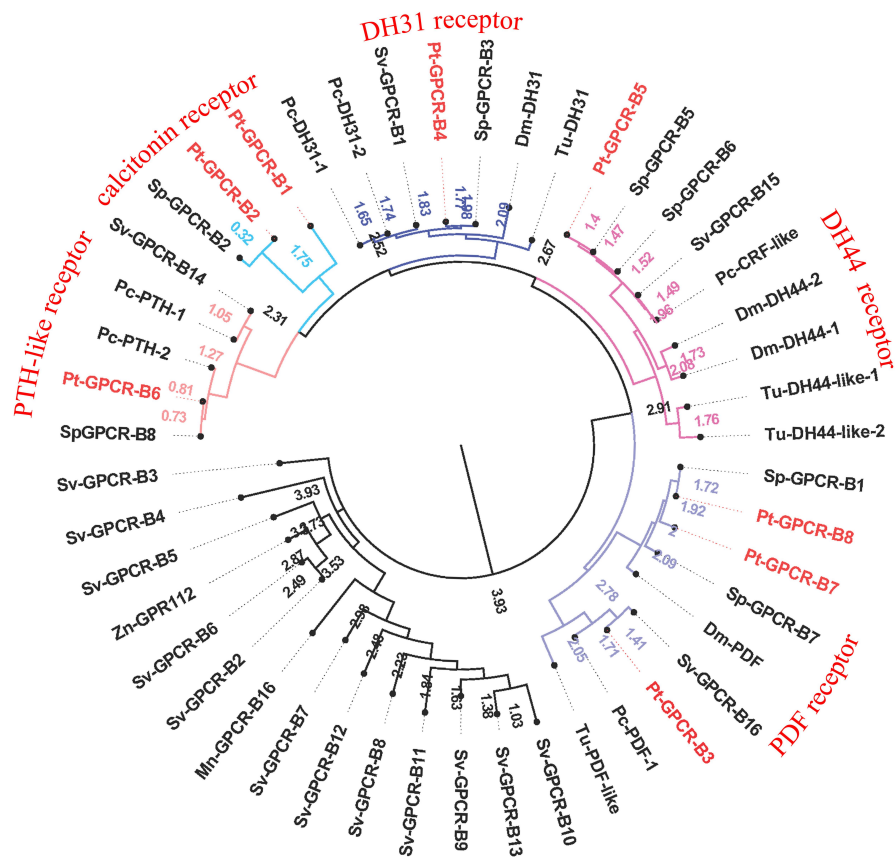


Figure 9 Phylogeny of the B-family neuropeptide GPCRs. Cladogram of neuropeptide GPCRs showing connections in the clustermap of B-family neuropeptide receptors. Pt-GPCR, *Portunus trituberculatus* GPCR; Sp-GPCR, *Scylla Paramamosain* GPCR; Dm-GPCR, *Drosophila melanogaster* GPCR; Pc-GPCR, *Procambarus clarkia* GPCR; Sv-GPCR, *Sagmariasus verreauxi* GPCR; Tu-GPCR, *Tetranychus urticae* GPCR; Zn-GPCR, *Zootermopsis nevadensis* GPCR; Mn-GPCR, *Macrobrachium nipponense* GPCR.

Full-size [DOI: 10.7717/peerj.12179/fig-9](https://doi.org/10.7717/peerj.12179/fig-9)

in other related crustaceans (Bao *et al.*, 2015; Johnson *et al.*, 2021). This could be explained as the following reasoning: (1) due to low expression levels and relatively small amounts of RNAseq reads, it is extremely difficult to be identified; (2) different expression in various tissues. It is far from to identify amount of GPCR transcripts only using CNS transcriptome database. More tissues transcriptome are needed to identified more GPCR transcripts; (3) deeper sequencing is required to identify more GPCR transcripts, which have been reported in other Portunidae species. Analysis of the phylogenetic tree of A-family GPCRs showed that 32 Pt-GPCR-A sequences clustered with the known GPCR orthologs (Fig. 8). The class A family comprises AST-AR, AST-BR, AST-CR, Burscion receptor, CCAPR, Corazonin receptor, ETHR, FMRFamide receptor, Moody receptor, proctolin receptor, SIFamide receptor, GPA2/GPB5receptor, CCHamide receptor, NPFR, RYamide receptor, sNPFR, RYamidereceptor, myosuppressin receptor, pyrokinin receptor, natalisin receptor, tachykinin receptor, and Vasopressin receptor. The corresponding neuropeptides of all these receptors were identified, except for FMRFamide receptor and Moody receptor which

were present in *P. trituberculatus*. Similar findings were observed for *S. paramamosain* (Bao et al., 2015). These two species had FMRamide receptor and Moody receptor, however their corresponding neuropeptides were not identified. This may be attributed to use of bioinformatics methods to predict neuropeptide GPCR and expression profiles which may not be sufficient. Therefore, the complete ORF sequences of these Pt-GPCRs should be cloned for accurate identification. Notably, a few neuropeptides were not identified in the receptors in this study, such as trissin receptor, RPCH receptor and ACP receptor. This can be attributed the process of filtering out of the sequences resulting in loss of short protein sequences (<150 aa). Therefore, further sequencing or High-Quality Genome Assembly is required to identify trissin receptor, RPCH receptor and ACP receptor in *P. trituberculatus*. The identification and characterization of the CHH/MIH receptor has remained elusive, but it is assumed that the receptors for the CHH family are GPCRs. In the silk moth *Bombyx mori*, two putative GPCRs identified BNGR-A2 and A34 as ITP receptors, and BNGR-A24 is an ITP-like receptor (member of CHHR family) (Nagai et al., 2014). Based on this discovery, Veenstra identified three transcripts as putative CHH-like receptors (CHHRs) in *P. clarkia* (Veenstra, 2015). Subsequently, CHHR orthologs have been identified in more than ten other decapod crustacean species (Buckley et al., 2016; Johnson et al., 2021; Oliphant et al., 2018; Tran et al., 2019). One putative GPCR (Pt-GPCR-A32) was identified as CHH-like receptor, as this sequences clustered into the ITP receptor clade (Fig. 8). In addition, a membrane guanylyl cyclase (GC-II) is considered as the receptor activated by MIH, resulting in immediate increase of the intracellular messenger cGMP level (Kim et al., 2004; Lee et al., 2007). Therefore, conclusive identification of the CHH/MIH receptor awaits a functional assay that shows CHH/MIH activation of their putative receptor expressed in a heterologous reporting system (Aizen et al., 2016; Ventura et al., 2017).

Leucine-rich repeat-containing GPCRs (LGRs)

As a member of rhodopsin-like GPCR family, three distinct types of LGRs have been classified (A-C) based on the number of leucine-rich repeat (LRR) motifs, low density lipoprotein (LDL) motifs and hinge region sequence (Van Hiel et al., 2012). Four putative LGRs were identified in the phylogenetic analysis (Fig. 8). Pt-GPCR-A11 and Pt-GPCR-A14 clustered with the burscion receptor (type B LGR2) and Pt-GPCR-A16 clustered with GPA2/GPB5 receptor (type A LGR1). LGR2 serves as the receptor for burscion, which regulates molting of the cuticle in *C. maenas* (Webster et al., 2013; Wilcockson & Webster, 2008) and reproduction and ovarian development in female shrimp, *P. monodon* (Sathapondecha, Panyim & Udomkit, 2015). In *D. melanogaster*, GPA2 and GPB5 function via DLGR1 (Hsueh et al., 2005), which has been reported to play a critical role in development (Vandersmissen et al., 2014). The function of LGR1 remains a little obscure in crustacean species. Another LGR identified (Pt-GPCR-A33) clustered with relaxin receptor (LGR4, type C1 LGR). Recent experimental evidence from *D. melanogaster* suggests LGR4 activated by dilp7, which has also been called relaxin (Imambocus et al., 2020). In insects, relaxin influences lipid synthesis and regulates egg laying decisions (Semaniuk et al., 2018; Yang et al., 2008). In 2020, Vennstra (Veenstra, 2020) has been reported relaxin and LGR4 in eight decapod species. It might suggest that relaxin may be LGR4 ligand.

Furthermore, ligand–receptor binding tests are needed to verify this hypothesis. However, the physiological function of relaxin in crustaceans remains unclear.

Orphan rhodopsin-like GPCRs

Orphan receptors are predicted to be involved in neuropeptide signaling pathways, but the ligands and function are still unknown. Since seven *Drosophila* orphan receptors were identified, orphan receptors orthologs have been identified in crustaceans subsequently (Bao *et al.*, 2020; Caers *et al.*, 2012; Johnson *et al.*, 2021). Two putative GPCRs (Pt-GPCR-A12 and Pt-GPCR-A13) clustered with the Moody receptor ortholog and Pt-GPCR-A27 clustered with Tre receptor ortholog. In *P. argus*, Moody receptors might be indirectly involved in chemical sensing (Kozma *et al.*, 2020). Little is known about Tre receptor phylogeny or function in crustaceans. In *D. melanogaster*, Tre receptor might have been involved in chemical sensing and in regulating male courtship behavior (Luu *et al.*, 2016). Much experimental evidence are needed to investigate the similar function of Tre receptor in decapod species as those in insects.

Other GPCRs of interest

Two alternatively splices ETHRs (ETHR-A and ETHR-B) are encoded by *ethr* gene and expressed in discrete central neurons that are thought to be differently involved in pre-ecdysis and ecdysis (Diao *et al.*, 2016; Kim *et al.*, 2006; Žitňan *et al.*, 2007). Pt-GPCR-A6 clustered with ETHR-B ortholog. In crustacean, numerous reports show ETHR transcripts in the CNS, but information on the role of these receptors in molting is still unclear (Minh Nhut *et al.*, 2020). Crz, a paralog of gonadotropin-releasing hormone, has various functions in different insects, such as affecting ecdysis in *Manduca sexta* (Žitňan *et al.*, 2007), participating in the pigmentation process in locusts (Tawfik *et al.*, 1999) and increasing heart activity in *Periplaneta Americana* (Veenstra, 1989). However, Crz has no effect on heart activity, blood glucose level, lipid mobilization or pigment distribution in *C. maenas* (Alexander *et al.*, 2018). Although CrzR is highly expressed in the YO, but it has little effect on ecdysteroid biosynthesis except a slightly stimulation in early postmolt (Alexander *et al.*, 2018; Tran *et al.*, 2019). In addition, Pt-GPCR-A3 clustered with CrzR ortholog. Crz and CrzR have been identified as an orthologue of GnRH and GnRHR in vertebrates, respectively. GnRH has been involved in regulation of reproductive processes in vertebrates. Still, whether Crz/CrzR signaling pathways in crustaceans plays a role in reproduction requires further investigation. Based on two conserved cysteines and an amidated histidine residue at the C terminus, this peptide has been called CCHamide, which is an invertebrate neuropeptide (Roller *et al.*, 2008). In *D. melanogaster*, CCHamide-2 binds CHHamide-2 receptor to affect feeding behavior (Nitabach Michael *et al.*, 2013). In *Gecarcinus lateralis*, two putative CCHamide receptors expressed great differences in all four molt stages and its suggest that these receptors might be play an important role in molting (Tran *et al.*, 2019). In addition, no studies reported CCHamide and their receptors related to reproduction in crustaceans. The role of CCHamide and their receptors in reproduction is still vague.

B-family GPCRs

A total of eight predicted GPCRs clustered with Secretin-like receptors (class B) (Fig. 9). PDFR, DH31R, and DH44R are members of B-family GPCRs in insects (Cardoso, Felix & Power, 2014), and all these B-family GPCRs were identified in *P. trituberculatus*. Pt-GPCR-B1 and Pt-GPCR-B2 clustered with the Calcitonin receptor ortholog. Pt-GPCR-B3, Pt-GPCR-B7 and Pt-GPCR-B8 clustered with PDF receptor ortholog. Pt-GPCR-B4 clustered with DH31 receptor ortholog. Pt-GPCR-B5 clustered with the DH44 receptor ortholog. Pt-GPCR-B6 clustered with the PTH-like receptor ortholog. Notably, three putative PDFRs (Pt-GPCR-B3, Pt-GPCR-B7, and Pt-GPCR-B8) were identified in *P. trituberculatus*. Also, three putative PDFRs (PDHRs) have been identified in *C. maenas* (Oliphant et al., 2018). Subsequently, only two of these putative receptors turned out to be functional by ligand–receptor binding tests (Alexander et al., 2020). In addition, Pt-GPCR-B3 is not a complete ORF and that may lead to an inaccurate cluster. Therefore, a complete ORF of Pt-GPCR-B3 should be cloned for reliable identification.

Tissue distribution of neuropeptides and putative GPCRs transcripts using RT-PCR

After obtaining nucleotide sequences of *P. trituberculatus* neuropeptide, their expression was explored in different tissues using RT-PCR to confirm that neuropeptide transcripts were synthesized in the CNS, and/or ovary; and check whether these transcripts were expressed in other tissues. A total of 32 putative neuropeptide–encoding transcripts of interest were detected in various tissues (Fig. 10). RT-PCR results showed that all of the 32 neuropeptide transcripts were present in CNS, mainly in cerebral ganglia, eyestalk ganglia, and ventral ganglia, which is consistent with their roles as neuropeptides. This finding showed that the predicted neuropeptides sequences, obtained from *P. trituberculatus* CNS transcriptome databases are reliable. Moreover, twenty-three neuropeptide transcripts, including ACP, ALP, AST-B, AST-CCC, CCAP, CHH1, CHH2, CNM, Elevenin, GPA2, GPB5, GSE, Kinin, Myosuppressin, NP1, NP2, NP3, sNPF, PDH1, PDH2, RYamide, Tachykinin, and Trissin were expressed in the ovary. This suggests that the putative neuropeptide might be involved in ovarian development and ovarian maturation.

A total of 33 neuropeptide GPCR transcripts (27 were Pt-GPCR-As and 6 belonged to Pt-GPCR-Bs) were chosen for assessment of their tissue distribution of female *P. trituberculatus* (Fig. 11). Most of these neuropeptide GPCRs were expressed in various tissues as well as neuropeptides. Notably, most of the GPCRs found in the ovary were similar to the expression profiles of neuropeptides. This might suggest that neuropeptide/GPCR signaling pathways are involved in regulation of the ovarian cycle. Five GPCRs, including CCAPR, FMRamide receptor, Proctolin receptor, AST-BR, and PDFRs, were expressed in ovary, and showed similar expression profiles to those in *S. paramamosain* (Bao et al., 2018b). Other GPCRs expression profiles in *P. trituberculatus* did not show corresponding GPCRs in *S. paramamosain*. This might be because the GPCRs selected for assessment of tissue expression were different from those in *S. paramamosain*. In addition, some unknown GPCRs were detected in the ovaries of two species. Therefore, further studies should explore expression of these transcripts among various species. Pt-GPCR-A9, was highly

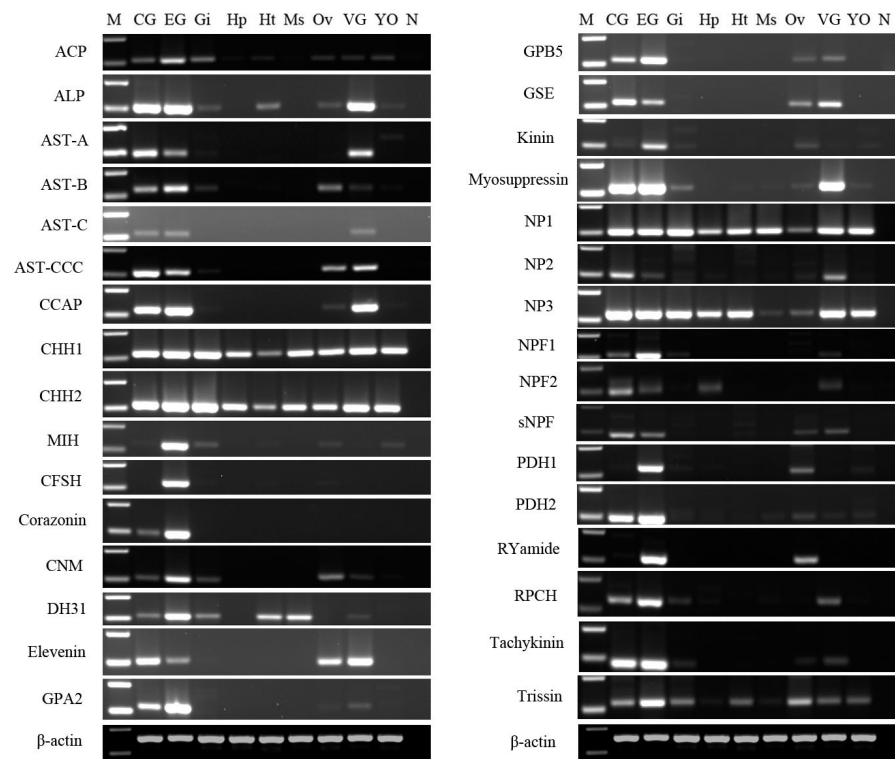


Figure 10 Tissue distribution of *P. trituberculatus* neuropeptide transcripts. Thirty-two neuropeptide transcripts were detected in the nine tissues from female *P. trituberculatus*. M: DNA Marker; CG, cerebral ganglia; EG, eyestalk ganglia; Gi, gill; Hp, hepatopancreas; Ht, heart; Ms, muscle; Ov, ovary; VG, ventral ganalia; YO, Y-organ; N, negative control (representing no template in PCR). β -actin as the reference gene.

Full-size  DOI: [10.7717/peerj.12179/fig-10](https://doi.org/10.7717/peerj.12179/fig-10)

expressed in gill, but this sequences clustered with the unknown GPCR orthologs. Pt-GPCR-A4 (CCAPR), Pt-GPCR-A27 (FMRFamide receptor) and Pt-GPCR-B6 (PTH-like receptor) were significantly expressed in ovary, compared with the levels in other tissues. Pt-GPCR-A33 (relaxin receptor) was only expressed in CNS and ovary. These results suggest that CCAPR, FMRFamide receptor, PTH-like receptor and relaxin receptor might be related to ovarian development. Further gene expression analysis should be designed to examine the expression of these GPCRs throughout development and in response to processes such as ovarian development and reproductive maturation.

In summary, several neuropeptide/GPCR signaling pathways have been reported in *P. trituberculatus* as well as other decapod species and in insects. Recent studies report that several neuropeptide/GPCR signaling pathways are involved in crustacean reproduction. These include AST-C/putative AST-CR (*Liu et al., 2019a*), sNPF/sNPF (*Bao et al., 2018a*), and Vasopressin/putative vasopressin receptor (*Lin, Wei & Ye, 2020*). These signaling pathways were also identified in *P. trituberculatus*, however information on the function of these pathways is still unclear. Therefore, further studies are required to gain a better

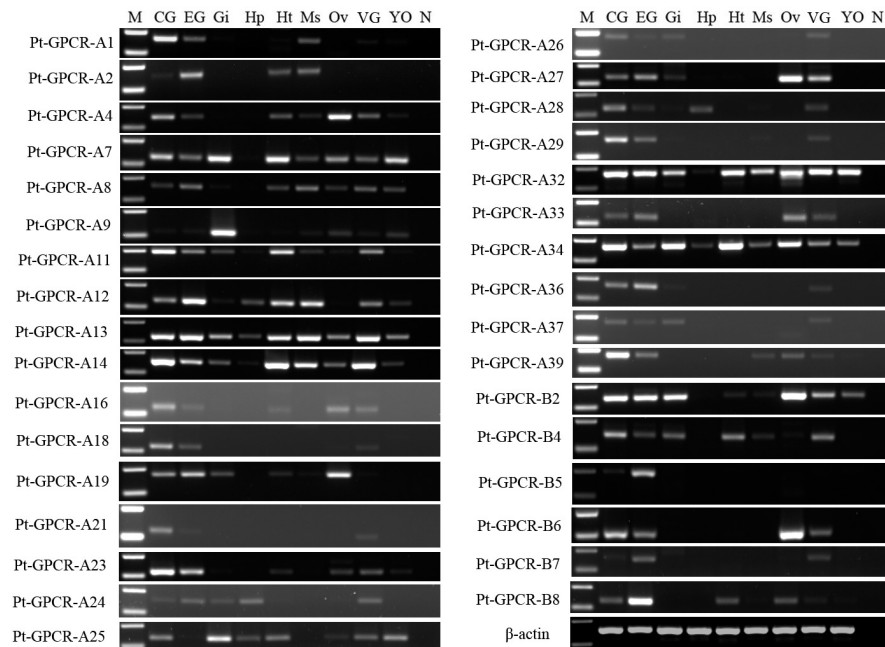


Figure 11 Tissue distribution of *P. trituberculatus* neuropeptide GPCR transcripts. Thirty-three neuropeptide GPCR transcripts were detected in nine tissues from female *P. trituberculatus*. M: DNA Marker; CG, cerebral ganglia; EG, eyestalk ganglia; Gi, gill; Hp, hepatopancreas; Ht, heart; Ms, muscle; Ov, ovary; VG, ventral ganalia; YO, Y-organ; N, negative control (representing no template in PCR). β -actin is the reference gene.

Full-size DOI: [10.7717/peerj.12179/fig-11](https://doi.org/10.7717/peerj.12179/fig-11)

understanding of the function of these neuropeptide/GPCR signaling pathways on the reproduction system of decapod crustacean species.

CONCLUSION

In the present study, 47 neuropeptide transcripts and 47 GPCR transcripts were identified in CNS transcriptome data of *P. trituberculatus*. Notably, only allatotropin, EH, and FLRFamide were absent in the dataset. A total of 32 neuropeptide transcripts and 33 GPCR transcripts were chosen for assessment of expression in different tissues. Analysis showed that 23 neuropeptide transcripts and 20 GPCR transcripts, were expressed in the ovary implying that they might be involved in regulation of reproduction. Moreover, most of these neuropeptide/GPCR signaling pathways have been reported in *P. trituberculatus* as well as other decapod species or insects, implying that they may play similar function in other species. Further, studies should explore the functions of these neuropeptides. In summary, the findings of this study provide a reference for exploring neuropeptide/GPCR distribution in other decapod species. In addition, these findings provide a basis for further studies on neuropeptidergic control of the physiology and behavior of decapod crustaceans.

ADDITIONAL INFORMATION AND DECLARATIONS

Funding

This work was supported by the National Natural Science Foundation of China (Nos. 41776165, 31802265 and 31902350), the Natural Science Foundation of Zhejiang Province (LY20C190004) and the KC Wong Magna Fund in Ningbo University. The funders had no role in study design, data collection and analysis, decision to publish, or preparation of the manuscript.

Grant Disclosures

The following grant information was disclosed by the authors:

National Natural Science Foundation of China: 41776165, 31802265, 31902350.

Natural Science Foundation of Zhejiang Province: LY20C190004.

KC Wong Magna Fund in Ningbo University.

Competing Interests

The authors declare there are no competing interests.

Author Contributions

- Shisheng Tu performed the experiments, analyzed the data, prepared figures and/or tables, and approved the final draft.
- Rui Xu performed the experiments, authored or reviewed drafts of the paper, and approved the final draft.
- Mengen Wang performed the experiments, prepared figures and/or tables, and approved the final draft.
- Xi Xie analyzed the data, authored or reviewed drafts of the paper, and approved the final draft.
- Chenchang Bao conceived and designed the experiments, analyzed the data, prepared figures and/or tables, authored or reviewed drafts of the paper, and approved the final draft.
- Dongfa Zhu conceived and designed the experiments, authored or reviewed drafts of the paper, and approved the final draft.

Data Availability

The following information was supplied regarding data availability:

The raw data is available at NCBI SRA: [PRJNA707143](https://www.ncbi.nlm.nih.gov/sra/PRJNA707143).

Supplemental Information

Supplemental information for this article can be found online at <http://dx.doi.org/10.7717/peerj.12179#supplemental-information>.

REFERENCES

- Aizen J, Chandler JC, Fitzgibbon QP, Sagi A, Battaglione SC, Elizur A, Ventura T. 2016. Production of recombinant insulin-like androgenic gland hormones from three

- decapod species: in vitro testicular phosphorylation and activation of a newly identified tyrosine kinase receptor from the Eastern spiny lobster, *Sagmariasus verreauxi*. *General and Comparative Endocrinology* 229:8–18 DOI 10.1016/j.ygcen.2016.02.013.
- Alexander JL, Oliphant A, Wilcockson DC, Audsley N, Down RE, Lafont R, Webster SG. 2018.** Functional characterization and signaling systems of corazonin and red pigment concentrating hormone in the green shore crab, *Carcinus maenas*. *Frontiers in Neuroscience* 11:752 DOI 10.3389/fnins.2017.00752.
- Alexander JL, Oliphant A, Wilcockson DC, Brendler-Spaeth T, Dircksen H, Webster SG. 2020.** Pigment dispersing factors and their cognate receptors in a crustacean model, with new insights into distinct neurons and their functions. *Frontiers in Neuroscience* 14:595648 DOI 10.3389/fnins.2020.595648.
- Bao C, Liu F, Yang Y, Lin Q, Ye H. 2020.** Identification of peptides and their GPCRs in the peppermint shrimp *Lysmata vittata*, a protandric simultaneous hermaphrodite species. *Frontiers in Endocrinology* 11:226 DOI 10.3389/fendo.2020.00226.
- Bao C, Yang Y, Huang H, Ye H. 2015.** Neuropeptides in the cerebral ganglia of the mud crab, *Scylla Paramamosain*: transcriptomic analysis and expression profiles during vitellogenesis. *Scientific Reports* 5:17055 DOI 10.1038/srep17055.
- Bao C, Yang Y, Huang H, Ye H. 2018a.** Inhibitory role of the mud crab short neuropeptide F in vitellogenesis and oocyte maturation via autocrine/paracrine signaling. *Frontiers in Endocrinology* 9:390 DOI 10.3389/fendo.2018.00390.
- Bao C, Yang Y, Zeng C, Huang H, Ye H. 2018b.** Identifying neuropeptide GPCRs in the mud crab, *Scylla Paramamosain*, by combinatorial bioinformatics analysis. *General and Comparative Endocrinology* 269:122–130 DOI 10.1016/j.ygcen.2018.09.002.
- Bednár B, Roller L, Čížmár D, Mitrová D, Žitňan D. 2017.** Developmental and sex-specific differences in expression of neuropeptides derived from allatotropin gene in the silkworm *Bombyx mori*. *Cell and Tissue Research* 368:259–275 DOI 10.1007/s00441-016-2556-x.
- Brody T, Cravchik A. 2000.** *Drosophila melanogaster* G protein-coupled receptors. *Journal of Cell Biology* 150:F83–F88 DOI 10.1083/jcb.150.2.f83.
- Brogiolo W, Stocker H, Ikeya T, Rintelen F, Fernandez R, Hafen E. 2001.** An evolutionarily conserved function of the *Drosophila* insulin receptor and insulin-like peptides in growth control. *Current Biology* 11:213–221 DOI 10.1016/S0960-9822(01)00068-9.
- Buckley SJ, Fitzgibbon QP, Smith GG, Ventura T. 2016.** In silico prediction of the G-protein coupled receptors expressed during the metamorphic molt of *Sagmariasus verreauxi* (Crustacea: Decapoda) by mining transcriptomic data: RNA-seq to repertoire. *General and Comparative Endocrinology* 228:111–127 DOI 10.1016/j.ygcen.2016.02.001.
- Bungart D, Hilbich C, Dircksen H, Keller R. 1995.** Occurrence of analogs of the myotropic neuropeptide orckinin in the shore crab, *Carcinus maenas*: evidence for a novel neuropeptide family. *Peptides* 16:67–72 DOI 10.1016/0196-9781(94)00145-V.
- Buratti E, Manfrin C, Tom M, De Moro G, Gerdol M, Guarnaccia C, Mosco A, Pallavicini A, Giulianini PG. 2013.** Application of D-crustacean hyperglycemic

- hormone induces peptidases transcription and suppresses glycolysis-related transcripts in the hepatopancreas of the crayfish *Pontastacus leptodactylus*—results of a transcriptomic study. *PLOS ONE* **8**:e65176 DOI [10.1371/journal.pone.0065176](https://doi.org/10.1371/journal.pone.0065176).
- Caers J, Verlinden H, Zels S, Vandersmissen HP, Vuerinckx K, Schoofs L. 2012.** More than two decades of research on insect neuropeptide GPCRs: an overview. *Frontiers in Endocrinology* **3**:151 DOI [10.3389/fendo.2012.00151](https://doi.org/10.3389/fendo.2012.00151).
- Cardoso JC, Felix RC, Power DM. 2014.** Nematode and arthropod genomes provide new insights into the evolution of class 2 B1 GPCRs. *PLOS ONE* **9**:e92220 DOI [10.1371/journal.pone.0092220](https://doi.org/10.1371/journal.pone.0092220).
- Carlsen JMCM, Josefsson L. 1976.** Purification and chemical structure of the red pigment-concentrating hormone of the prawn *Leander adspersus*. *General and Comparative Endocrinology* **30**:327–331 DOI [10.1016/0016-6480\(76\)90083-6](https://doi.org/10.1016/0016-6480(76)90083-6).
- Chen HY, Kang BJ, Sultana Z, Wilder MN. 2018.** Molecular cloning of red pigment-concentrating hormone (RPCH) from eyestalks of the whiteleg shrimp (*Litopenaeus vannamei*): evaluation of the effects of the hormone on ovarian growth and the influence of serotonin (5-HT) on its expression. *Aquaculture* **495**:232–240 DOI [10.1016/j.aquaculture.2018.04.027](https://doi.org/10.1016/j.aquaculture.2018.04.027).
- Choi MY, Vander Meer RK. 2012.** Molecular structure and diversity of PBAN/pyrokinin family peptides in ants. *Frontiers in Endocrinology* **3**:32 DOI [10.3389/fendo.2012.00032](https://doi.org/10.3389/fendo.2012.00032).
- Choi CY, Zheng J, Watson RD. 2006.** Molecular cloning of a cDNA encoding a crustacean hyperglycemic hormone from eyestalk ganglia of the blue crab, *Callinectes sapidus*. *General and Comparative Endocrinology* **148**:383–387 DOI [10.1016/j.ygcen.2006.03.003](https://doi.org/10.1016/j.ygcen.2006.03.003).
- Christie AE. 2014.** Expansion of the *Litopenaeus vannamei* and *Penaeus monodon* peptidomes using transcriptome shotgun assembly sequence data. *General and Comparative Endocrinology* **206**:235–254 DOI [10.1016/j.ygcen.2014.04.015](https://doi.org/10.1016/j.ygcen.2014.04.015).
- Christie AE. 2016a.** Expansion of the neuropeptidome of the globally invasive marine crab *Carcinus maenas*. *General and Comparative Endocrinology* **235**:150–169 DOI [10.1016/j.ygcen.2016.05.013](https://doi.org/10.1016/j.ygcen.2016.05.013).
- Christie AE. 2016b.** Prediction of *Scylla olivacea* (Crustacea; Brachyura) peptide hormones using publicly accessible transcriptome shotgun assembly (TSA) sequences. *General and Comparative Endocrinology* **230**:1–16 DOI [10.1016/j.ygcen.2016.03.008](https://doi.org/10.1016/j.ygcen.2016.03.008).
- Christie AE. 2020.** Identification of putative neuropeptidergic signaling systems in the spiny lobster, *Panulirus argus*. *Invertebrate Neuroscience* **20**(2):1–12 DOI [10.1007/s10158-020-0235-9](https://doi.org/10.1007/s10158-020-0235-9).
- Christie AE, Cashman CR, Brennan HR, Ma M, Sousa GL, Li L, Stemmler EA, Dickinson PS. 2008.** Identification of putative crustacean neuropeptides using in silico analyses of publicly accessible expressed sequence tags. *General and Comparative Endocrinology* **156**:246–264 DOI [10.1016/j.ygcen.2008.01.018](https://doi.org/10.1016/j.ygcen.2008.01.018).
- Christie AE, Chi M. 2015.** Prediction of the neuropeptidomes of members of the Astacidea (Crustacea, Decapoda) using publicly accessible transcriptome shotgun

- assembly (TSA) sequence data. *General and Comparative Endocrinology* 224:38–60 DOI 10.1016/j.ygcen.2015.06.001.
- Christie AE, Durkin CS, Hartline N, Ohno P, Lenz PH. 2010.** Bioinformatic analyses of the publicly accessible crustacean expressed sequence tags (ESTs) reveal numerous novel neuropeptide-encoding precursor proteins, including ones from members of several little studied taxa. *General and Comparative Endocrinology* 167:164–178 DOI 10.1016/j.ygcen.2010.01.005.
- Christie AE, Lundquist CT, Nässel DR, Nusbaum MP. 1997.** Two novel tachykinin-related peptides from the nervous system of the crab *Cancer borealis*. *The Journal of Experimental Biology Pt 17*:2279–2294.
- Christie AE, Pascual MG. 2016.** Peptidergic signaling in the crab *Cancer borealis*: tapping the power of transcriptomics for neuropeptidome expansion. *General and Comparative Endocrinology* 237:53–67 DOI 10.1016/j.ygcen.2016.08.002.
- Christie AE, Rivera CD, Call CM, Dickinson PS, Stemmler EA, Hull JJ. 2020.** Multiple transcriptome mining coupled with tissue specific molecular cloning and mass spectrometry provide insights into agatoxin-like peptide conservation in decapod crustaceans. *General and Comparative Endocrinology* 299:113609 DOI 10.1016/j.ygcen.2020.113609.
- Christie AE, Roncalli V, Cieslak MC, Pascual MG, Yu A, Lameyer TJ, Stanhope ME, Dickinson PS. 2017.** Prediction of a neuropeptidome for the eyestalk ganglia of the lobster *Homarus americanus* using a tissue-specific de novo assembled transcriptome. *General and Comparative Endocrinology* 243:96–119 DOI 10.1016/j.ygcen.2016.11.001.
- Christie AE, Stemmler EA, Dickinson PS. 2010.** Crustacean neuropeptides. *Cellular and Molecular Life Sciences* 67:4135–4169 DOI 10.1007/s00018-010-0482-8.
- Christie AE, Stevens JS, Bowers MR, Chapline MC, Jensen DA, Schegg KM, Goldwasser J, Kwiatkowski MA, Pleasant TK, Shoenfeld L, Tempest LK, Williams CR, Wiwatpanit T, Smith CM, Beale KM, Towle DW, Schooley DA, Dickinson PS. 2009.** Identification of a calcitonin-like diuretic hormone that functions as an intrinsic modulator of the American lobster, *Homarus americanus*, cardiac neuromuscular system. *Journal of Experimental Biology* 213:118–127 DOI 10.1242/jeb.037077.
- Christie AE, Yu A. 2019.** Identification of peptide hormones and their cognate receptors in *Jasus edwardsii*—A potential resource for the development of new aquaculture management strategies for rock/spiny lobsters. *Aquaculture* 503:636–662 DOI 10.1016/j.aquaculture.2018.11.059.
- Davies MN, Gloriam DE, Secker A, Freitas AA, Mendao M, Timmis J, Flower DR. 2007.** Proteomic applications of automated GPCR classification. *Proteomics* 7:2800–2814 DOI 10.1002/pmic.200700093.
- Diao FMW, Shi J, Park D, Diao F, Taghert P, Ewer JH, White B. 2016.** The splice isoforms of the *Drosophila* ecdysis triggering hormone receptor have developmentally distinct roles. *Genetics* 202:175–189 DOI 10.1534/genetics.115.182121/-/DC1.

- Elekonich MM, Horodyski FM. 2003.** Insect allatotropins belong to a family of structurally-related myoactive peptides present in several invertebrate phyla. *Peptides* 24:1623–1632 DOI [10.1016/j.peptides.2003.08.011](https://doi.org/10.1016/j.peptides.2003.08.011).
- Fernlund P. 1976.** Structure of a light-adapting hormone from the shrimp, *Pandalus borealis*. *Biochimica Et Biophysica Acta* 439:17–25 DOI [10.1016/0005-2795\(76\)90155-0](https://doi.org/10.1016/0005-2795(76)90155-0).
- Fu Q, Kutz KK, Schmidt JJ, Hsu Y-WA, Messinger DI, Cain SD, De la Iglesia HO, Christie AE, Li L. 2005.** Hormone complement of the Cancer productus sinus gland and pericardial organ: an anatomical and mass spectrometric investigation. *The Journal of Comparative Neurology* 493:607–626 DOI [10.1002/cne.20773](https://doi.org/10.1002/cne.20773).
- Gard AL, Lenz PH, Shaw JR, Christie AE. 2009.** Identification of putative peptide paracrines/hormones in the water flea *Daphnia pulex* (Crustacea; Branchiopoda; Cladocera) using transcriptomics and immunohistochemistry. *General and Comparative Endocrinology* 160:271–287 DOI [10.1016/j.ygcen.2008.12.014](https://doi.org/10.1016/j.ygcen.2008.12.014).
- González M, Betancourt JL, Rodríguez T, Estrada MP, Carpio Y, Ramos L. 2010.** Induction of spawning in Pacific white shrimp *Litopenaeus vannamei* (Boone, 1931) by injection of its molt inhibiting hormone isoform II produced in *E. coli*. *Aquaculture Research* 51:3100–3108 DOI [10.1111/are.14644](https://doi.org/10.1111/are.14644).
- Gouy M, Guindon S, Gascuel O. 2009.** SeaView Version 4: a multiplatform graphical user interface for sequence alignment and phylogenetic tree building. *Molecular Biology and Evolution* 27:221–224 DOI [10.1093/molbev/msp259](https://doi.org/10.1093/molbev/msp259).
- Grabherr MG, Haas BJ, Yassour M, Levin JZ, Thompson DA, Amit I, Adiconis X, Fan L, Raychowdhury R, Zeng Q, Chen Z, Mauceli E, Hacohen N, Gnirke A, Rhind N, Di Palma F, Birren BW, Nusbaum C, Lindblad-Toh K, Friedman N, Regev A. 2011.** Full-length transcriptome assembly from RNA-Seq data without a reference genome. *Nature Biotechnology* 29:644–652 DOI [10.1038/nbt.1883](https://doi.org/10.1038/nbt.1883).
- Horodyski FM, Riddiford LM, Truman JW. 1989.** Isolation and expression of the eclosion hormone gene from the tobacco hornworm, *Manduca sexta*. *Proceedings of the National Academy of Sciences of the United States of America* 86:8123–8127 DOI [10.1073/pnas.86.20.8123](https://doi.org/10.1073/pnas.86.20.8123).
- Hsueh AJW, Hsu SY, Park J-I, Kuwabara Y, Sudo S. 2005.** Heterodimeric fly glycoprotein hormone- α 2 (GPA2) and glycoprotein hormone- β 5 (GPB5) activate fly leucine-rich repeat-containing G protein-coupled receptor-1 (DLGR1) and stimulation of human thyrotropin receptors by chimeric fly GPA2 and human GPB5. *Endocrinology* 146:3596–3604 DOI [10.1210/en.2005-0317](https://doi.org/10.1210/en.2005-0317).
- Imambocus BN, Wittich A, Tenedini F, Zhou F, Hu C, Sauter K, Varela EM, Herédia F, Casimiro AP, Macedo A, Schlegel P, Yang C-H, Miguel-Aliaga I, Pankratz MJ, Gontijo AM, Cardona A, Soba P. 2020.** Discrete escape responses are generated by neuropeptide-mediated circuit logic. *BioRxiv*. the preprint server for biology DOI [10.1101/2020.09.22.307033](https://doi.org/10.1101/2020.09.22.307033).
- Johnsen AH, Duve H, Davey M, Hall M, Thorpe A. 2000.** Sulfakinin neuropeptides in a crustacean. Isolation, identification and tissue localization in the tiger prawn *Penaeus monodon*. *European Journal of Biochemistry* 267:1153–1160 DOI [10.1046/j.1432-1327.2000.01113.x](https://doi.org/10.1046/j.1432-1327.2000.01113.x).

- Johnson EC, Christie AE, Chi M, Lameyer TJ, Pascual MG, Shea DN, Stanhope ME, Schulz DJ, Dickinson PS. 2015.** Neuropeptidergic signaling in the american lobster *Homarus americanus*: new insights from high-throughput nucleotide sequencing. *PLOS ONE* **10**:e0145964 DOI [10.1371/journal.pone.0145964](https://doi.org/10.1371/journal.pone.0145964).
- Johnson EC, Rump MT, Kozma MT, Pawar SD, Derby CD. 2021.** G protein-coupled receptors as candidates for modulation and activation of the chemical senses in decapod crustaceans. *PLOS ONE* **16**:e0252066 DOI [10.1371/journal.pone.0252066](https://doi.org/10.1371/journal.pone.0252066).
- Kegel G, Reichwein B, Weese S, Gaus G, Peter-Katalinic J, Keller R. 1989.** Amino acid sequence of the crustacean hyperglycemic hormone (CHH) from the shore crab, *Carcinus maenas*. *FEBS Letters* **255**:10–14 DOI [10.1016/0014-5793\(89\)81051](https://doi.org/10.1016/0014-5793(89)81051).
- Kim H-W, Batista LA, Hoppes JL, Lee KJ, Mykles DL. 2004.** A crustacean nitric oxide synthase expressed in nerve ganglia, Y-organ, gill and gonad of the tropical land crab, *Gecarcinus lateralis*. *Journal of Experimental Biology* **207**:2845–2857 DOI [10.1242/jeb.01117](https://doi.org/10.1242/jeb.01117).
- Kim YJ, Zitnan D, Cho KH, Schooley DA, Mizoguchi A, Adams ME. 2006.** Central peptidergic ensembles associated with organization of an innate behavior. *Proceedings of the National Academy of Sciences of the United States of America* **103**:14211–14216 DOI [10.1073/pnas.0603459103](https://doi.org/10.1073/pnas.0603459103).
- Kingan TG, Zitnan D, Jaffe H, Beckage NE. 1997.** Identification of neuropeptides in the midgut of parasitized insects: FLRFamides as candidate paracrines. *Molecular and Cellular Endocrinology* **133**:19–32 DOI [10.1016/s0303-7207\(97\)00140-8](https://doi.org/10.1016/s0303-7207(97)00140-8).
- Klein JM, Mangerich S, Kleijn D, Keller R, Weidemann , Weidemann WM. 1993.** Molecular cloning of crustacean putative molt-inhibiting hormone (MIH) precursor. *FEBS Letters* **334(93)**:139–142 DOI [10.1016/0014-5793\(93\)81699-z](https://doi.org/10.1016/0014-5793(93)81699-z).
- Kozma MT, Ngo-Vu H, Rump MT, Bobkov YV, Ache BW, Derby CD. 2020.** Single cell transcriptomes reveal expression patterns of chemoreceptor genes in olfactory sensory neurons of the Caribbean spiny lobster, *Panulirus argus*. *BMC Genomics* **21**:649 DOI [10.1186/s12864-020-07034-7](https://doi.org/10.1186/s12864-020-07034-7).
- Lee SG, Bader BD, Chang ES, Mykles DL. 2007.** Effects of elevated ecdysteroid on tissue expression of three guanylyl cyclases in the tropical land crab *Gecarcinus lateralis*: possible roles of neuropeptide signaling in the molting gland. *Journal of Experimental Biology* **210**:3245–3254 DOI [10.1242/jeb.007740](https://doi.org/10.1242/jeb.007740).
- Li L, Kelley WP, Billimoria CP, Christie AE, Pulver SR, Sweedler JV, Marder E. 2003.** Mass spectrometric investigation of the neuropeptide complement and release in the pericardial organs of the crab, *Cancer borealis*. *Journal of Neurochemistry* **87**:642–656 DOI [10.1046/j.1471-4159.2003.02031](https://doi.org/10.1046/j.1471-4159.2003.02031).
- Lin D, Wei Y, Ye H. 2020.** Role of oxytocin/vasopressin-like peptide and its receptor in vitellogenesis of mud crab. *International Journal of Molecular Sciences* **21(7)**:2297 DOI [10.3390/ijms21072297](https://doi.org/10.3390/ijms21072297).
- Liu A, Liu F, Shi W, Huang H, Wang G, Ye H. 2019a.** C-Type allatostatin and its putative receptor from the mud crab serve an inhibitory role in ovarian development. *The Journal of Experimental Biology* **222**:jeb207985 DOI [10.1242/jeb.207985](https://doi.org/10.1242/jeb.207985).

- Liu A, Liu J, Chen X, Lu B, Zeng C, Ye H. 2019b.** A novel crustacean hyperglycemic hormone (CHH) from the mud crab *Scylla paramamosain* regulating carbohydrate metabolism. *Comparative Biochemistry and Physiology Part A: Molecular and Integrative Physiology* **231**:49–55 DOI [10.1016/j.cbpa.2019.01.015](https://doi.org/10.1016/j.cbpa.2019.01.015).
- Liu X, Ma K, Liu Z, Feng J, Ye B, Qiu G. 2019c.** Transcriptome analysis of the brain of the Chinese mitten crab, *Eriocheir sinensis*, for neuropeptide abundance profiles during ovarian development. *Animal Reproduction Science* **201**:63–70 DOI [10.1016/j.anireprosci.2018.12.010](https://doi.org/10.1016/j.anireprosci.2018.12.010).
- Luo X, Chen T, Zhong M, Jiang X, Zhang L, Ren C, Hu C. 2015.** Differential regulation of hepatopancreatic vitellogenin (VTG) gene expression by two putative molt-inhibiting hormones (MIH1/2) in Pacific white shrimp (*Litopenaeus vannamei*). *Peptides* **68**:58–63 DOI [10.1016/j.peptides.2014.11.002](https://doi.org/10.1016/j.peptides.2014.11.002).
- Luu P, Zaki SA, Tran DH, French RL. 2016.** A novel gene controlling the timing of courtship initiation in *Drosophila melanogaster*. *Genetics* **202**:1043–1053 DOI [10.1534/genetics.115.183061](https://doi.org/10.1534/genetics.115.183061).
- Ma M, Bors EK, Dickinson ES, Kwiatkowski MA, Sousa GL, Henry RP, Smith CM, Towle DW, Christie AE, Li L. 2009a.** Characterization of the *Carcinus maenas* neuropeptidome by mass spectrometry and functional genomics. *General and Comparative Endocrinology* **161**:320–334 DOI [10.1016/j.ygcen.2009.01.015](https://doi.org/10.1016/j.ygcen.2009.01.015).
- Ma M, Gard AL, Xiang F, Wang J, Davoodian N, Lenz PH, Malecha SR, Christie AE, Li L. 2010.** Combining in silico transcriptome mining and biological mass spectrometry for neuropeptide discovery in the Pacific white shrimp *Litopenaeus vannamei*. *Peptides* **31**:27–43 DOI [10.1016/j.peptides.2009.10.007](https://doi.org/10.1016/j.peptides.2009.10.007).
- Ma M, Szabo TM, Jia C, Marder E, Li L. 2009b.** Mass spectrometric characterization and physiological actions of novel crustacean C-type allatostatins. *Peptides* **30**:1660–1668 DOI [10.1016/j.peptides.2009.05.023](https://doi.org/10.1016/j.peptides.2009.05.023).
- Meng X, Zhang M, Gao B, Lv J, Li J, Liu P. 2020.** Integrative proteomic and microrna analysis: insights into mechanisms of eyestalk ablation-induced ovarian maturation in the swimming crab *Portunus trituberculatus*. *Frontiers in Endocrinology* **11**:533 DOI [10.3389/fendo.2020.00533](https://doi.org/10.3389/fendo.2020.00533).
- Minh Nhut T, Mykles DL, Elizur A, Ventura T. 2020.** Ecdysis triggering hormone modulates molt behaviour in the redclaw crayfish *Cherax quadricarinatus*, providing a mechanistic evidence for conserved function in molt regulation across Pancrustacea. *General and Comparative Endocrinology* **298**:113556 DOI [10.1016/j.ygcen.2020.113556](https://doi.org/10.1016/j.ygcen.2020.113556).
- Nitabach Michael N, Li S, Torre-Muruzabal T, Søgaard KC, Ren GR, Hauser F, Engelsens SM, Pødenphanth MD, Desjardins A, Grimmelikhuijzen CJP. 2013.** Expression patterns of the *Drosophila* neuropeptide CCHamide-2 and its receptor may suggest hormonal signaling from the gut to the brain. *PLOS ONE* **8**:e76131 DOI [10.1371/journal.pone.0076131](https://doi.org/10.1371/journal.pone.0076131).
- Nagai C, Mabashi-Asazuma H, Nagasawa H, Nagata S. 2014.** Identification and characterization of receptors for ion transport peptide (ITP) and ITP-like (ITPL)

- in the silkworm *Bombyx mori*. *Journal of Biological Chemistry* **289**:32166–32177
DOI [10.1074/jbc.M114.590646](https://doi.org/10.1074/jbc.M114.590646).
- Nguyen TV, Cummins SF, Elizur A, Ventura T. 2016.** Transcriptomic characterization and curation of candidate neuropeptides regulating reproduction in the eyestalk ganglia of the Australian crayfish, *Cherax quadricarinatus*. *Scientific Reports* **6**:38658
DOI [10.1038/srep38658](https://doi.org/10.1038/srep38658).
- Nguyen TV, Rotllant GE, Cummins SF, Elizur A, Ventura T. 2018.** Insights into sexual maturation and reproduction in the norway lobster (*Nephrops norvegicus*) via in silico prediction and characterization of neuropeptides and G protein-coupled receptors. *Frontiers in Endocrinology* **9**:430 DOI [10.3389/fendo.2018.00430](https://doi.org/10.3389/fendo.2018.00430).
- Nieto J, Veelaert D, Derua R, Waelkens E, Cerstiaens A, Coast G, Devreese B, Van B J, Calderon J, De Loof A, Schoofs L. 1998.** Identification of one tachykinin- and two kinin-related peptides in the brain of the white shrimp, *Penaeus vannamei*. *Biochemical and Biophysical Research Communications* **248**:406–411
DOI [10.1006/bbrc.1998.8964](https://doi.org/10.1006/bbrc.1998.8964).
- Oliphant A, Alexander JL, Swain MT, Webster SG, Wilcockson DC. 2018.** Transcriptomic analysis of crustacean neuropeptide signaling during the moult cycle in the green shore crab, *Carcinus maenas*. *BMC Genomics* **19**:711
DOI [10.1186/s12864-018-5057-3](https://doi.org/10.1186/s12864-018-5057-3).
- Oliphant A, Hawkes MKN, Cridge AG, Dearden PK. 2020.** Transcriptomic characterisation of neuropeptides and their putative cognate G protein-coupled receptors during late embryo and stage-1 juvenile development of the Aotearoa-New Zealand crayfish, *Paranephrops zealandicus*. *General and Comparative Endocrinology* **292**:113443
DOI [10.1016/j.ygcen.2020.113443](https://doi.org/10.1016/j.ygcen.2020.113443).
- Ren J, Wen L, Gao X, Jin C, Xue Y, Yao X. 2009.** DOG 1.0: illustrator of protein domain structures. *Cell Research* **19**:271–273 DOI [10.1038/cr.2009.6](https://doi.org/10.1038/cr.2009.6).
- Roller L, Yamanaka N, Watanabe K, Daubnerová I, Žitňan D, Kataoka H, Tanaka Y. 2008.** The unique evolution of neuropeptide genes in the silkworm *Bombyx mori*. *Insect Biochemistry and Molecular Biology* **38**:1147–1157
DOI [10.1016/j.ibmb.2008.04.009](https://doi.org/10.1016/j.ibmb.2008.04.009).
- Saetan J, Kruangkum T, Phanthong P, Tipbunjong C, Udomuksorn W, Sobhon P, Sretarugsa P. 2018.** Molecular cloning and distribution of oxytocin/vasopressin-like mRNA in the blue swimming crab, *Portunus pelagicus*, and its inhibitory effect on ovarian steroid release. *Comparative Biochemistry and Physiology Part A: Molecular and Integrative Physiology* **218**:46–55 DOI [10.1016/j.cbpa.2018.01.012](https://doi.org/10.1016/j.cbpa.2018.01.012).
- Sathapondecha P, Panyim S, Udomkit A. 2015.** A novel function of bursicon in stimulation of vitellogenin expression in black tiger shrimp, *Penaeus monodo*. *Aquaculture* **446**:80–87 DOI [10.1016/j.aquaculture.2015.04.027](https://doi.org/10.1016/j.aquaculture.2015.04.027).
- Scott RL, Diao F, Silva V, Park S, Luan H, Ewer J, White BH. 2020.** Non-canonical eclosion hormone-expressing cells regulate *Drosophila* ecdysis. *iScience* **23**:101108
DOI [10.1016/j.isci.2020.101108](https://doi.org/10.1016/j.isci.2020.101108).

- Semaniuk UV, Gospodaryov DV, Feden'ko KM, Yurkevych IS, Vaiserman AM, Storey KB, Simpson SJ, Lushchak O. 2018. Insulin-like peptides regulate feeding preference and metabolism in *Drosophila*. *Frontiers in Physiology* **9**:1083 DOI [10.3389/fphys.2018.01083](https://doi.org/10.3389/fphys.2018.01083).
- Sharabi O, Manor R, Weil S, Aflalo ED, Lezer Y, Levy T, Aizen J, Ventura T, Mather PB, Khalaila I, Sagi A. 2016. Identification and characterization of an insulin-like receptor involved in crustacean reproduction. *Endocrinology* **157**:928–941 DOI [10.1210/en.2015-1391](https://doi.org/10.1210/en.2015-1391).
- Shen J, Zhu DF, Hu ZH, Qi YZ, Wang CJ. 2011. Molt staging in the swimming crab *Portunus trituberculatus*. *Journal of Fisheries of China* **35**:1481–1487 DOI [10.3724/SP.J.1231.2011.17418](https://doi.org/10.3724/SP.J.1231.2011.17418).
- Sithigorngul P, Pupuem J, Krungkasem C, Longyant S, Chaivisuthangkura P, Sithigorngul W, Petsom A. 2002. Seven novel FMRFamide-like neuropeptide sequences from the eyestalk of the giant tiger prawn *Penaeus monodon*. *Comparative Biochemistry and Physiology B-Biochemistry and Molecular Biology* **131**(01):325–337 DOI [10.1016/S1096-4959\(01\)00499-7](https://doi.org/10.1016/S1096-4959(01)00499-7).
- Sithigorngul P, Saraithongkum W, Jaideechoey S, Longyant S, Sithigorngul W. 1998. Novel FMRFamide-like neuropeptides from the eyestalk of the giant freshwater prawn *Macrobrachium rosenbergii*. *Comparative Biochemistry and Physiology Part B Biochemistry and Molecular Biology* **120**:587–595 DOI [10.1016/S0305-0491\(98\)10051-2](https://doi.org/10.1016/S0305-0491(98)10051-2).
- Skiebe P, Schneider H. 1994. Allatostatin peptides in the crab stomatogastric nervous system: inhibition of the pyloric motor pattern and distribution of allatostatin-like immunoreactivity. *Journal of Experimental Biology* **194**:195–208 DOI [10.1242/jeb.194.1.195](https://doi.org/10.1242/jeb.194.1.195).
- Stafflinger E, Hansen KK, Hauser F, Schneider M, Cazzamali G, Williamson M, Grimmelikhuijzen CJP. 2008. Cloning and identification of an oxytocin/vasopressin-like receptor and its ligand from insects. *Proceedings of the National Academy of Sciences of the United States of America* **105**:3262–3267 DOI [10.1073/pnas.0710897105](https://doi.org/10.1073/pnas.0710897105).
- Stangier J, Hilbich C, Beyreuther K, Keller R. 1987. Unusual cardioactive peptide (CCAP) from pericardial organs of the shore crab *Carcinus maenas*. *Proceedings of the National Academy of Sciences of the United States of America* **84**:575–579 DOI [10.1073/pnas.84.2.575](https://doi.org/10.1073/pnas.84.2.575).
- Stay B, Tobe SS. 2007. The role of allatostatins in juvenile hormone synthesis in insects and crustaceans. *Annual Review of Entomology* **52**:277–299 DOI [10.1146/annurev.ento.51.110104.151050](https://doi.org/10.1146/annurev.ento.51.110104.151050).
- Stemmler EA, Cashman CR, Messinger DI, Gardner NP, Dickinson PS, Christie AE. 2007. High-mass-resolution direct-tissue MALDI-FTMS reveals broad conservation of three neuropeptides (APSGFLGMRamide, GYRKPPFNGSIFamide and pQDLLD-HVFLRFamide) across members of seven decapod crustacean infraorders. *Peptides* **28**:2104–2115 DOI [10.1016/j.peptides.2007.08.019](https://doi.org/10.1016/j.peptides.2007.08.019).
- Sullivan RE. 1979. A proctolin-like peptide in crab pericardial organs. *Journal of Experimental Zoology* **210**:543–552 DOI [10.1002/jez.1402100318](https://doi.org/10.1002/jez.1402100318).

- Sun D, Lyu J, Gao B, Huan P, Cai Y, Liu P. 2019.** Cloning of crustacean cardioactive peptide and its functional verification under low-salt adaptation in swimming crab (*Portunus trituberculatus*). *Journal of Fishery Sciences of China* **26**:261–270 DOI [10.3724/sp.j.1118.2019.18207](https://doi.org/10.3724/sp.j.1118.2019.18207).
- Sun S, Zhu M, Pan F, Feng J, Li J. 2020.** Identifying Neuropeptide and G protein-coupled receptors of juvenile oriental river prawn (*Macrobrachium nipponense*) in response to salinity acclimation. *Frontiers in Endocrinology* **11**:623 DOI [10.3389/fendo.2020.00623](https://doi.org/10.3389/fendo.2020.00623).
- Tang B, Zhang D, Li H, Jiang S, Zhang H, Xuan F, Ge B, Wang Z, Liu Y, Sha Z, Cheng Y, Jiang W, Jiang H, Wang Z, Wang K, Li C, Sun Y, She S, Qiu Q, Wang W, Li X, Li Y, Liu Q, Ren Y. 2020.** Chromosome-level genome assembly reveals the unique genome evolution of the swimming crab (*Portunus trituberculatus*). *GigaScience* **9**:1–10 DOI [10.1093/gigascience/giz161](https://doi.org/10.1093/gigascience/giz161).
- Tawfik AI, Tanaka S, De Loof A, Schoofs L, Baggerman G, Waelkens E, Derua R, Milner Y, Yerushalmi Y, Pener MP. 1999.** Identification of the gregarization-associated dark-pigmentotropin in locusts through an albino mutant. *Proceedings of the National Academy of Sciences of the United States of America* **96**:7083–7087 DOI [10.1073/pnas.96.12.7083](https://doi.org/10.1073/pnas.96.12.7083).
- Tinikul Y, Engsusophon A, Kruangkum T, Thongrod S, Tinikul R, Sobhon P. 2017.** Neuropeptide F stimulates ovarian development and spawning in the female giant freshwater prawn, *Macrobrachium rosenbergii*, and its expression in the ovary during ovarian maturation cycle. *Aquaculture* **469**:128–136 DOI [10.1016/j.aquaculture.2016.11.026](https://doi.org/10.1016/j.aquaculture.2016.11.026).
- Torfs P, Nieto J, Cerstiaens J, Boon D, Baggerman G, Poulos C, Waelkens E, Derua R, Calderón J, De Loof A, Schoofs L. 2001.** Pyrokinin neuropeptides in a crustacean. Isolation and identification in the white shrimp *Penaeus vannamei*. *European Journal of Biochemistry* **268**:149–154 DOI [10.1046/j.1432-1327.2001.01858.x](https://doi.org/10.1046/j.1432-1327.2001.01858.x).
- Tran NM, Mykles DL, Elizur A, Ventura T. 2019.** Characterization of G-protein coupled receptors from the blackback land crab *Gecarcinus lateralis* Y organ transcriptome over the molt cycle. *BMC Genomics* **20**:74 DOI [10.1186/s12864-018-5363-9](https://doi.org/10.1186/s12864-018-5363-9).
- Van Hiel MB, Vandersmissen HP, Van Loy T, Vanden Broeck J. 2012.** An evolutionary comparison of leucine-rich repeat containing G protein-coupled receptors reveals a novel LGR subtype. *Peptides* **34**:193–200 DOI [10.1016/j.peptides.2011.11.004](https://doi.org/10.1016/j.peptides.2011.11.004).
- Vandersmissen HP, Van Hiel MB, Van Loy T, Vleugels R, Vanden Broeck J. 2014.** Silencing *D. melanogaster* lgr1 impairs transition from larval to pupal stage. *General and Comparative Endocrinology* **209**:135–147 DOI [10.1016/j.ygcen.2014.08.006](https://doi.org/10.1016/j.ygcen.2014.08.006).
- Vaudry H, Ventura T, Cummins SF, Fitzgibbon Q, Battaglene S, Elizur A. 2014.** Analysis of the central nervous system transcriptome of the eastern rock lobster *Sagmariasus verreauxi* reveals its putative neuropeptidome. *PLOS ONE* **9**:e97323 DOI [10.1371/journal.pone.0097323](https://doi.org/10.1371/journal.pone.0097323).
- Veenstra JA. 1989.** Isolation and structure of corazonin, a cardioactive peptide from the American cockroach. *FEBS Letters* **250**:231–234 DOI [10.1016/0014-5793\(89\)80727-6](https://doi.org/10.1016/0014-5793(89)80727-6).

- Veenstra JA. 2000.** Mono- and dibasic proteolytic cleavage sites in insect neuroendocrine peptide precursors. *Archives of Insect Biochemistry and Physiology* **43**:49–63 DOI [10.1002/\(sici\)1520-6327\(200002\)43:2<49::Aid-arch1>3.0.Co;2-m](https://doi.org/10.1002/(sici)1520-6327(200002)43:2<49::Aid-arch1>3.0.Co;2-m).
- Veenstra JA. 2015.** The power of next-generation sequencing as illustrated by the neuropeptidome of the crayfish *Procambarus clarkii*. *General and Comparative Endocrinology* **224**:84–95 DOI [10.1016/j.ygcen.2015.06.013](https://doi.org/10.1016/j.ygcen.2015.06.013).
- Veenstra JA. 2016.** Similarities between decapod and insect neuropeptidomes. *PeerJ* **4**:e2043 DOI [10.7717/peerj.2043](https://doi.org/10.7717/peerj.2043).
- Veenstra JA. 2020.** Gonadulins, the fourth type of insulin-related peptides in decapods. *General and Comparative Endocrinology* **296**:113528 DOI [10.1016/j.ygcen.2020.113528](https://doi.org/10.1016/j.ygcen.2020.113528).
- Ventura T, Bose U, Fitzgibbon QP, Smith GG, Shaw PN, Cummins SF, Elizur A. 2017.** CYP450s analysis across spiny lobster metamorphosis identifies a long sought missing link in crustacean development. *The Journal of Steroid Biochemistry and Molecular Biology* **171**:262–269 DOI [10.1016/j.jsbmb.2017.04.007](https://doi.org/10.1016/j.jsbmb.2017.04.007).
- Verlinden H, Gijbels M, Lismont E, Lenaerts C, Vanden Broeck J, Marchal E. 2015.** The pleiotropic allatregulatory neuropeptides and their receptors: a mini-review. *Journal of Insect Physiology* **80**:2–14 DOI [10.1016/j.jinsphys.2015.04.004](https://doi.org/10.1016/j.jinsphys.2015.04.004).
- Viet Nguyen T, Ryan LW, Nocillado J, Le Groumellec M, Elizur A, Ventura T. 2020.** Transcriptomic changes across vitellogenesis in the black tiger prawn (*Penaeus monodon*), neuropeptides and G protein-coupled receptors repertoire curation. *General and Comparative Endocrinology* **298**:113585 DOI [10.1016/j.ygcen.2020.113585](https://doi.org/10.1016/j.ygcen.2020.113585).
- Vogel KJ, Brown MR, Strand MR. 2015.** Ovary ecdysteroidogenic hormone requires a receptor tyrosine kinase to activate egg formation in the mosquito *Aedes aegypti*. *Proceedings of the National Academy of Sciences of the United States of America* **112**:5057–5062 DOI [10.1073/pnas.1501814112](https://doi.org/10.1073/pnas.1501814112).
- Wang CJ, Zhu DF, Zhou QY, Hu ZH, Xie X, Shen J. 2013.** Molt-inhibiting hormone levels and ecdysteroid titer during a molt cycle of *Portunus trituberculatus*. *Acta Hydrobiologica Sinica* **37**:22–28 DOI [10.7541/2013.22](https://doi.org/10.7541/2013.22).
- Webster SG, Wilcockson DC, Mrinalini, Sharp JH. 2013.** Bursicon and neuropeptide cascades during the ecdysis program of the shore crab, *Carcinus maenas*. *General and Comparative Endocrinology* **182**:54–64 DOI [10.1016/j.ygcen.2012.11.018](https://doi.org/10.1016/j.ygcen.2012.11.018).
- Wegener C, Suwansa-ard S, Thongbuakaew T, Wang T, Zhao M, Elizur A, Hanna PJ, Sretarugsa P, Cummins SF, Sobhon P. 2015.** In silico neuropeptidome of female *Macrobrachium rosenbergii* based on transcriptome and peptide mining of eyestalk, central nervous system and ovary. *PLOS ONE* **10**:e0123848 DOI [10.1371/journal.pone.0123848](https://doi.org/10.1371/journal.pone.0123848).
- Wilcockson DC, Webster SG. 2008.** Identification and developmental expression of mRNAs encoding putative insect cuticle hardening hormone, bursicon in the green shore crab *Carcinus maenas*. *General and Comparative Endocrinology* **156**:113–125 DOI [10.1016/j.ygcen.2007.12.003](https://doi.org/10.1016/j.ygcen.2007.12.003).

- Wu XG, Yao GG, Yang XZ, Cheng YX, Wang CL. 2007.** A study on the ovarian development of *Portunus trituberculatus* in East China Sea during the first reproductive cycle. *Acta Oceanologica Sinica* **29**:120–127 DOI [10.3321/j.issn:0253-4193.2007.04.014](https://doi.org/10.3321/j.issn:0253-4193.2007.04.014).
- Xie X, Zhu D, Yang J, Qiu X, Cui X, Tang J. 2014.** Molecular cloning of two structure variants of crustacean hyperglycemic hormone (CHH) from the swimming crab (*Portunus trituberculatus*), and their gene expression during molting and ovarian development. *Zoological Science* **31**:802–809 DOI [10.2108/zs140053](https://doi.org/10.2108/zs140053).
- Xu Z, Wei Y, Guo S, Lin D, Ye H. 2020.** Short neuropeptide F enhances the immune response in the hepatopancreas of mud crab (*Scylla paramamosain*). *Fish and Shellfish Immunology* **101**:244–251 DOI [10.1016/j.fsi.2020.04.007](https://doi.org/10.1016/j.fsi.2020.04.007).
- Xu Z, Zhao M, Li X, Lu Q, Li Y, Ge J, Pan J. 2015.** Transcriptome profiling of the eyestalk of precocious juvenile Chinese mitten crab reveals putative neuropeptides and differentially expressed genes. *Gene* **569**:280–286 DOI [10.1016/j.gene.2015.05.075](https://doi.org/10.1016/j.gene.2015.05.075).
- Yang CH, Belawat P, Hafen E, Jan LY, Jan YN. 2008.** *Drosophila* egg-laying site selection as a system to study simple decision-making processes. *Science* **319**:1679–1683 DOI [10.1126/science.1151842](https://doi.org/10.1126/science.1151842).
- Yang SP, He JG, Sun CB, Chan SF. 2014.** Characterization of the shrimp neuroparsin (MeNPLP): RNAi silencing resulted in inhibition of vitellogenesis. *FEBS Open Bio* **4**:976–986 DOI [10.1016/j.fob.2014.09.005](https://doi.org/10.1016/j.fob.2014.09.005).
- Zeng H, Bao C, Huang H, Ye H, Li S. 2016.** The mechanism of regulation of ovarian maturation by red pigment concentrating hormone in the mud crab *Scylla paramamosain*. *Animal Reproduction Science* **164**:152–161 DOI [10.1016/j.anireprosci.2015.11.025](https://doi.org/10.1016/j.anireprosci.2015.11.025).
- Žitňan D, Kim YJ, Žitňanová I, Roller L, Adams ME. 2007.** Complex steroid–peptide–receptor cascade controls insect ecdysis. *General and Comparative Endocrinology* **153**:88–96 DOI [10.1016/j.ygcen.2007.04.002](https://doi.org/10.1016/j.ygcen.2007.04.002).
- Zmora N, Chung JS. 2014.** A novel hormone is required for the development of reproductive phenotypes in adult female crabs. *Endocrinology* **155**:230–239 DOI [10.1210/en.2013-1603](https://doi.org/10.1210/en.2013-1603).