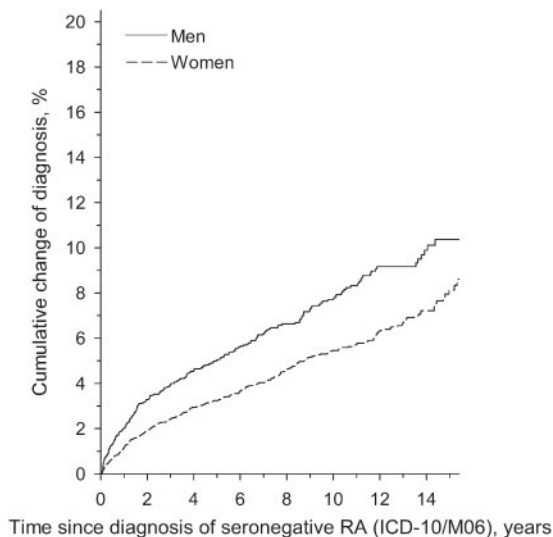


Erratum

Erratum to: Is seronegative rheumatoid arthritis true rheumatoid arthritis? A nationwide cohort study**Kirsi Paalanen¹, Kari Puolakka², Elena Nikiphorou³, Pekka Hannonen¹ and Tuulikki Sokka^{1,4}**Rheumatology 2020;00:1–5.
doi:10.1093/rheumatology/keaa623

In the above article, Figure 1. has been updated as follows online:

Previous version

Fig. 1 The cumulative change of diagnosis

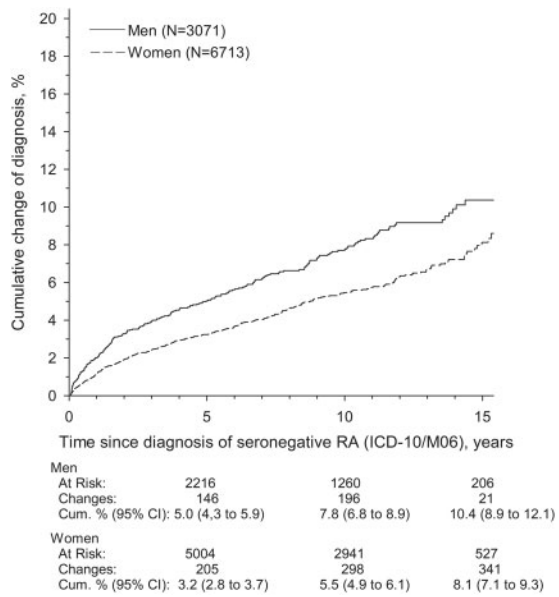
The cumulative incidence of new SpA diagnosis (PsA, axial SpA and IBD) between men and women in patients initially diagnosed as seronegative RA during years 2000 and 2014.

¹Department of Medicine, Central Finland Central Hospital, Jyväskylä, ²Terveystalo Healthcare, Lappeenranta, Finland, ³Centre for Rheumatic Diseases, King's College London, London, UK and ⁴University of Eastern Finland, Kuopio, Finland

Correspondence to: Kirsi Paalanen, Central Hospital of Central Finland, Keskussairaalantie 19, 40620 Jyväskylä, Finland.
E-mail: kirsi.paalanen@ksshp.fi

Corrected version

Fig. 1 The cumulative change of diagnosis



The cumulative incidence of new SpA diagnosis (PsA, axial SpA and IBD) between men and women in patients initially diagnosed as seronegative RA during years 2000 and 2014.

The publisher apologizes for the error.