


RESEARCH ARTICLE

Open Access



# ACID: a free tool for drug repurposing using consensus inverse docking strategy

Fan Wang<sup>1,2†</sup>, Feng-Xu Wu<sup>1,2†</sup>, Cheng-Zhang Li<sup>1,2</sup>, Chen-Yang Jia<sup>1,2</sup>, Sun-Wen Su<sup>1,2</sup>, Ge-Fei Hao<sup>3\*</sup>   
and Guang-Fu Yang<sup>1,2,4\*</sup>

## Abstract

Drug repurposing offers a promising alternative to dramatically shorten the process of traditional de novo development of a drug. These efforts leverage the fact that a single molecule can act on multiple targets and could be beneficial to indications where the additional targets are relevant. Hence, extensive research efforts have been directed toward developing drug based computational approaches. However, many drug based approaches are known to incur low successful rates, due to incomplete modeling of drug-target interactions. There are also many technical limitations to transform theoretical computational models into practical use. Drug based approaches may, thus, still face challenges for drug repurposing task. Upon this challenge, we developed a consensus inverse docking (CID) workflow, which has a ~10% enhancement in success rate compared with current best method. Besides, an easily accessible web server named auto in silico consensus inverse docking (ACID) was designed based on this workflow (<http://chemyang.ccnuc.edu.cn/ccb/server/ACID>).

**Keywords:** ACID, Web server, Drug repurposing, Consensus inverse docking

## Introduction

In recent years, the productivity challenge facing the pharmaceutical industry has become particularly difficult to overcome [1]. By many estimates, the number of new molecular entity approved to market per billion US dollars spent on (research and development) R&D has halved roughly every one decade, falling around 80-fold in inflation-adjusted terms [2]. To increase drug-discovery productivity, more and more attention has been paid to exploring the relationship between drug and disease, which can advance our knowledge of molecular mechanism of disease indication and lead to new strategies to treat productivity challenge [3, 4]. Nevertheless,

traditional strategies which typically oriented on a search for a novel therapeutic compound combined with discovery of a new therapeutic target are time consuming, expensive and risky because of the necessity for multiple experimental and clinical validation [5].

Drug repurposing/repositioning/rescue, the application of an existing drug to a new disease indication, is a promising approach to address the 'productivity gap', especially the demand of rapid clinical impact at a lower cost by the 'starting-from-scratch' drug development [6]. Compared with brand new drug discovery for a given disease indication, this method has several advantages. First, due to the existing drug has already been proved to be sufficiently safe in humans, the safety risk of clinical failure is much lower at least from a safety point of view. Second, due to the safety assessment and most of formulation task have already been completed, the development cycle should be largely reduced. Third, the investment is always less [7]. These advantages have made the development of repurposed drugs into a task of low risk investments with faster and higher returns. Hence, Drug repurposing is drawing widespread attention from the pharmaceutical industry, government agencies and academic institutes,

\*Correspondence: gfhao@mail.ccnuc.edu.cn; gfyang@mail.ccnuc.edu.cn

<sup>†</sup>Fan Wang and Feng-Xu Wu co-first authors.

<sup>1</sup> Key Laboratory of Pesticide & Chemical Biology, Ministry of Education, College of Chemistry, Central China Normal University, Wuhan 430079, People's Republic of China

<sup>3</sup> State Key Laboratory Breeding Base of Green Pesticide and Agricultural Bioengineering, Key Laboratory of Green Pesticide and Agricultural Bioengineering, Ministry of Education, Research and Development Center for Fine Chemicals, Guizhou University, Guiyang 550025, People's Republic of China

Full list of author information is available at the end of the article



such as ‘Discovering New Therapeutic Uses for Existing Molecules Plan’ by NIH (USA). However, drug repurposing is vastly more complicated than typically imagined and to date there has not been a systematic approach to identify repurposing opportunities.

In order to reduce the number of “wet” experiments and thereby reduce cost, extensive research efforts have been directed toward developing computational (virtual or in silico) approaches, which have been proved extremely valuable in identifying potential opportunities in these fields. Of the several techniques for generating computational repositioning hypotheses, inverse/reverse docking, involved docking an existing drug in the potential binding cavities of a set of clinically relevant disease targets, is proving to be a powerful tool for drug repositioning [8, 9]. Inverse docking is ‘one ligand-many targets’ scenario, representing a structure-based computational strategy. Different with the conventional drug virtual screening, inverse virtual screening was performed for a small-molecule against a large collection of binding-sites of clinically relevant macromolecular targets. The top-ranking targets based on the binding complementarity (shape and electrostatics) with the drug are likely to result in potential drug repositioning. Hence, efficient tools were developed for inverse docking, for example, INVDOCK [10], TarFisDock [11], PDTD [12], and idTarget [13]. Moreover, successful drug repurposing examples along with these tools are steadily grows, such as sildenafil and thalidomide [14]. Since the basic philosophy behind reverse docking is the same with docking and the critical parameters of the docking programs were always optimized based on some of the specific ligand and target systems, the performance in docking pose search itself and scoring of the docked poses may, thus, still face challenges for reverse docking methods. Up to date, many studies have proved that the consensus strategy that combining several types of docking algorithm can achieve higher success rates in pose prediction than single docking algorithm [15]. Hence, development of consensus inverse docking algorithms to address the inherent difficulties involved in the molecular docking, is extremely valuable in identifying potential opportunities of drug repurposing [9]. In addition, due to that almost all current docking tools are designed for ‘one ligand-many targets’ scenario, the usability of tools for inverse virtual screening task is occasionally restricted by code-writing dependencies and tedious operation steps, which bring challenges for non-expert users. Therefore, there is still a strong demand for a new free server of inverse docking.

Hence, we developed a computational protocol by combining the results of several dissimilar types of free docking method into a consensus inverse docking (CID) scheme. Here, we selected AutoDock Vina, LEDOCK, PLANTS, and PSOVina for binding pose search as they represent significantly different docking methodologies

(i.e., different conformational search algorithm, different global and local optimizers, and different scoring functions) and have employed different collections of crystal complexes and binding data to calibrate their optimization algorithms. In addition, we used Molecular Mechanics/Poisson–Boltzmann Surface Area (MM/PBSA) and X-SCORE for final binding energy calculation as they are more rigorous than the intrinsic scoring function in principle. The intention was to investigate whether integration of these to develop a consensus strategy to the inverse docking problem would result in improvements in posing accuracy and prediction of binding modes. Besides, in order to significantly reduce user time for data gathering and multi-step analysis for drug repurposing task, an comprehensive web platform named Auto in silico consensus inverse docking (ACID) (<http://chemyang.ccnu.edu.cn/ccb/server/ACID>) with a user-friendly interface was also designed for an easy evaluation and application of this strategy, which consists of the following three tools: (i) an automated consensus inverse docking workflow program, (ii) a compound database containing 2086 approved drugs with original therapeutic information, (iii) a known target database containing 831 protein structures from PDB covering 30 therapeutic areas.

## Methods

### Selection of test set

The PDB-bind database is a large collection of protein–ligand crystal complexes with associated experimentally determined binding data [16]. A total of 16,151 protein–ligand entries are contained in the PDB-bind database. In all protein–ligand entries, there are 4463 entries with good quality structural and binding data. The experimental resolution of any chosen crystal structure should be lower than 3.0 Å, because adopting structures with poor resolution may generate false predicted conformations [17]. No NMR-solved structures were selected in our benchmark dataset. Any complexes with ligands containing off-standard atom types (like Si or Be) were rejected. Finally, we only chose complexes with a single drug like molecule bound in the active site. Hence, a subset contains 195 complex structures of these have been selected as the “core set”, aiming to provide high-quality complexes that represents a broad cross-section of the database. This is of appropriate size for evaluation studies of docking and scoring performance [18].

### Preparation of structures for inverse docking

For each complex, the original conformation of ligand was extracted from the PDB file; similarly, the 3D structure of corresponding protein was generated. As for the proteins, water molecules were removed and the program PDB2PQR 1.6 21 was used to assign position-optimized

hydrogen atoms under the protonation state simulated to pH=7.0. The AMBER ff14SB [19] force field were adopted for charge assignment. The MOL2 format representation of each receptor was prepared by SPORES tool in Plants software package. The Autodock Tools 1.5.4 utility prepare\_receptor4.py was used to assign Gasteiger charges to atoms. The Autodock Tools utility prepare\_ligand4.py was used to assign Gasteiger charges and rotatable bonds. The input grid files were prepared by dms and sphgen\_cpp tools of DOCK software package.

### Selection of docking softwares

Seven docking softwares were carefully evaluated to build consensus strategy, including AUTODOCK [20], VINA [21], DOCK [22], PLANTS [23], PSOVINA [24], LEDOCK (<http://www.lephar.com>) and GOLD [25]. This selection covers a wide variety of conformation search algorithm and scoring function (Additional file 1: Table S1), thus representing an abundant source for optimizing the consensus protocol. The docking calculation was performed on the prepared dataset of 195 receptors and ligands by using these seven docking softwares based on default parameters. The box within the surrounding 12.5 Å of the bound ligand was defined as active site. 100 conformations for each ligand versus its corresponding active site were produced by each software. The one with highest score were selected as the final pose.

### Binding free energy calculation

Before binding free energy calculation, the Sander module in Amber16 [26] program was used to perform the three-step optimization of the ligand-receptor complex. Firstly, only waters, ions and hydrogens were allowed to move. Secondly, the backbone atoms of the protein were fixed while others were allowed to move. Thirdly, all the atoms of the system were free to move. In the three optimization process, 2000 steps steepest descent method followed by 2000 steps conjugated gradient method were used for each ligand-receptor binding system. Finally, the binding free energy ( $\Delta G_{\text{bind}}$ ) is calculated by using the MM/PBSA [27, 28] and X-score methods [29, 30].

As for the X-score method, it is assumed that the overall binding free energy in a protein-ligand binding process can be divided into several terms (shown in Eq. 1) [31]. Here,  $\Delta G_{\text{vdw}}$  represents the van der Waals interaction between the receptor and the ligand;  $\Delta G_{\text{H-bond}}$  represents the hydrogen bonding between the receptor and the ligand;  $\Delta G_{\text{deformation}}$  represents the deformation effect;  $\Delta G_{\text{hydrophobic}}$  represents the hydrophobic effect;  $\Delta G_0$  represents a regression constant.  $\Delta G_{\text{bind}}$  value between the receptor and ligand could be calculated simply by the X-score software package.

$$\Delta G_{\text{bind}} = \Delta G_{\text{vdw}} + \Delta G_{\text{H-bond}} + \Delta G_{\text{deformation}} + \Delta G_{\text{hydrophobic}} + \Delta G_0 \quad (1)$$

In the MM/PBSA method [32], the free energy of the receptor/protein-inhibitor binding,  $\Delta G_{\text{bind}}$ , is obtained from the difference between the free energies of the receptor/protein-ligand complex ( $G_{\text{cpx}}$ ) and the unbound receptor/protein ( $G_{\text{rec}}$ ) and ligand ( $G_{\text{lig}}$ ). The binding free energy ( $\Delta G_{\text{bind}}$ ) was evaluated as a sum of the changes in the binding energy ( $\Delta E_{\text{bind}}$ ), solvation entropy ( $-T\Delta S_{\text{sol}}$ ), and conformational entropy ( $-T\Delta S_{\text{conf}}$ ) (shown in Eq. 2) [33]. Where  $\Delta E_{\text{bind}}$  is interaction energies between a ligand and a protein, which were computed using the Sander modules of the Amber16 program. The entropy contribution to the binding free energy ( $-T\Delta S$ ) was obtained by using a local program developed in our own laboratory [33].

$$\Delta G_{\text{bind}} = \Delta E_{\text{bind}} - T\Delta S_{\text{sol}} - T\Delta S_{\text{conf}} \quad (2)$$

### Server implementation

As shown in Additional file 1: Figure S1, ACID web server mainly consists of three parts: Model (M), View (V) and Controller (C). Model is an object, which can provide a series of convenient APIs to access database. View represents the web service available for users. Controller is a Perl script program to control the whole consensus inverse docking protocol. A dedicated Linux machine in the high-performance computer cluster is used to run ACID web server. PHP (version 5.6), Apache (version 2.0.51), HTML5 and Javascript are used in the web application to provide online web service. The web server was established in the 'Linux + Apache + MySQL + PHP + Javascript' framework. The web interface is written in JavaScript using the React.js (input page, output page, and dataset visualization) and Ember.js (results and analysis pages) frameworks. The server side is written as a Python Cornice Web Framework with a GO component for rapid searching. A Torque management system is used to queue submitted jobs. The database which stores corresponding messages and results of each task is implemented by using MySQL (version 5.1.73). Results are stored for one month before deletion. The JSmol interactive molecular viewer plugin (<http://www.jmol.org/>) is applied in structure visualization. Firefox or Chrome explorer is recommended for browsing the server. Computer Screen with resolution higher than 1440 × 900 is recommended for displaying the web pages.

## Results and discussion

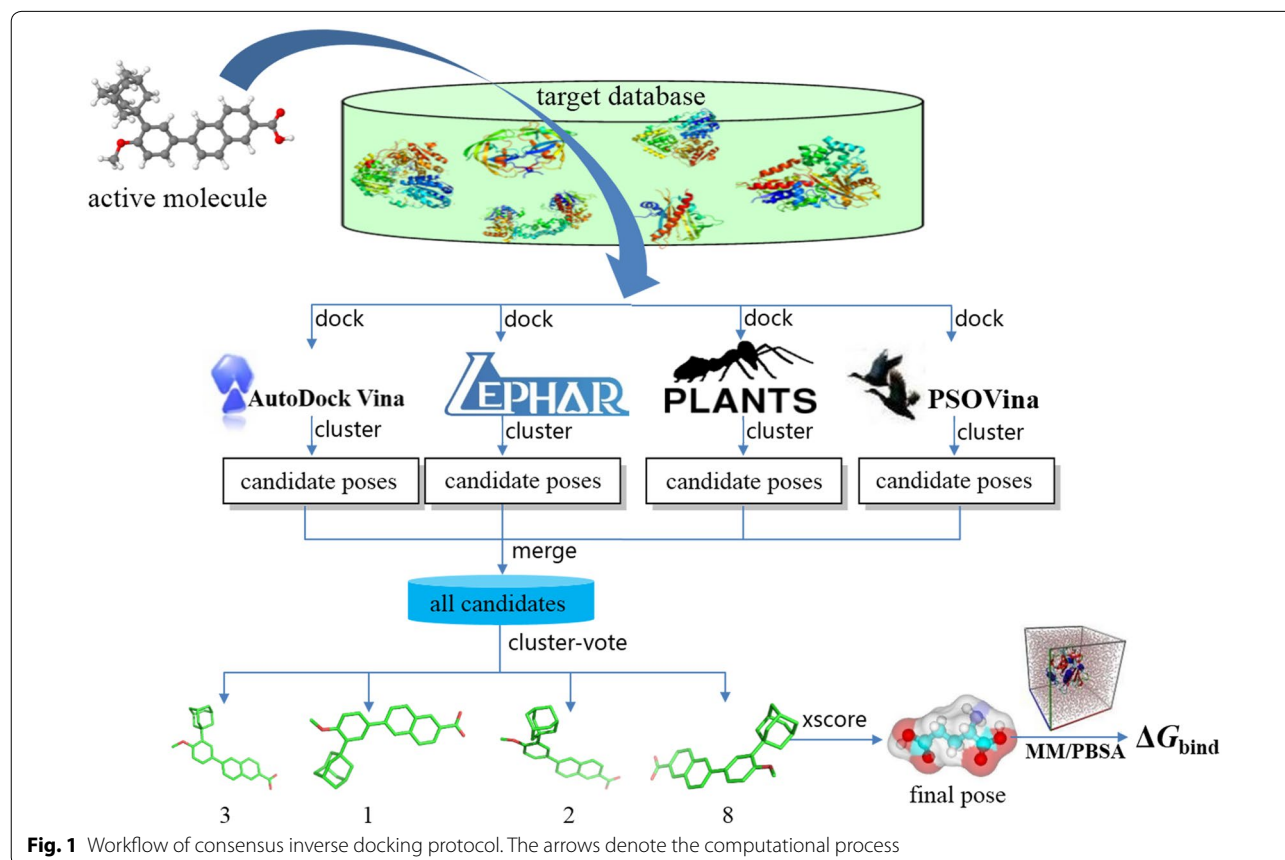
### Consensus inverse docking strategy

Consensus strategy may have relatively higher pose prediction performance than single docking software [34]. Hence, to select suitable docking methods to construct consensus inverse docking protocol, conformation prediction performance of these softwares was carefully evaluated. The final pose of each software was selected according to docking score. The RMSD value between each pose and its original conformation in complex crystal were calculated. If the  $\text{RMSD} < 2.0 \text{ \AA}$ , the corresponding pose prediction was success. The testing results are shown in Additional file 1: Figure S2. In our benchmark, GOLD software with GoldScore showed a slightly higher accuracy 66%. Taking the commercial copyright restriction into account, four academically free softwares, including VINA (63%), PLANTS (62%), PSOVINA (64%), and LEDOCK (64%) were selected to construct the consensus inverse docking method.

The consensus strategy can simulate a real-life voting process, because a wide range of voting processes can effectively avoid mistakes in decisions. Hence, a well-designed conformational *cluster-vote* strategy was optimized by using these four softwares (shown in Fig. 1). The

detailed process of CID is like the following: First, initial 3D conformations of the given active molecule was generated and optimized by using MMFF94 force field [35]. Secondly, the optimized conformation was docked into the active site of each protein and four subsets of docking conformations were produced, which contain the poses independently predicted by a certain docking program. Third, the conformational clustering is performed in each conformational group. We calculate the RMSD value between each pose and create a similarity matrix in a conformational group. The conformations with RMSD value lower than  $2.0 \text{ \AA}$  can be considered as the same conformational cluster. The *vote* value of each conformational cluster is equal to the pose number in this cluster. The conformation with best score can be used as a representative of this conformational cluster. Finally, the number of conformational cluster of each individual docking method could be obtained.

A set of representative conformations from each docking algorithm were selected to efficiently inspect different guided search algorithms for correct conformation of a protein–ligand complex. The representative conformation of each conformational cluster from the four docking methods was used to make up a new conformational



**Fig. 1** Workflow of consensus inverse docking protocol. The arrows denote the computational process

ensemble, and then the same clustering method is performed to select the strongly binding conformations. The number of conformation is the number of votes. For example, if a conformation cluster from LEDOCK was also predicted by PSOVina, Vina, and PLANTS, that has the RMSD value lower than the threshold value of 2.0 Å, such a conformation cluster is qualified as 4 votes. The higher the vote number, the higher the support rate of the conformational cluster. In the case of vote dataset, the highest quality predicted conformation cluster has 4 votes. However, if there are two or more top clusters have the same votes, the pose number obtained by each docking method will be taken into account to judge. Finally, the highest vote conformational cluster was used to perform binding affinity calculation with X-score and MM/PBSA methods [29, 30].

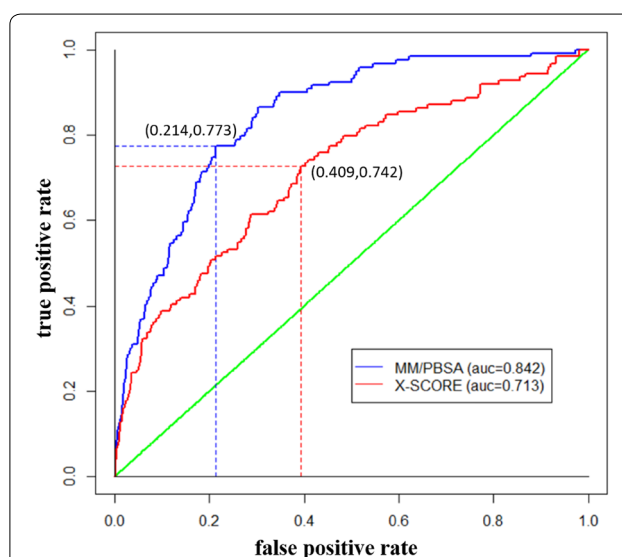
### Performance and comparison with existing tools

A collection of target structures with the information of approved therapeutic drugs and potential ligand binding cavities is the prerequisite of drug repurposing. Since this database is used to search the probable binding proteins for existing drugs by using inverse docking, it only contains the proteins with 3D structures. The target proteins were selected from several online databases such as DrugBank [36], Uniprot [37], and PDB [38]. In order to integrate with consensus inverse docking protocol, drug target structure database should be constructed to store each protein in both PDB format and mol2 format with basic information, including docking parameters and active site information. Finally, we collected a database of experimentally confirmed 831 drug targets and 2086 drug compounds. To evaluate the performance of CID protocol, the screening was performed on the 831 experimentally confirmed drug targets and 51 out of the 2086 collected commercial drugs were selected to compose a test set according to the two criterias. (1) The cocrystal structures of the drug and its targets should be available. (2) The drugs in the test set should have a wide representation of the whole commercial drug dataset. The ligand flexibility, which can be assessed by the number of rotatable bond, can have a major impact on the performance of docking method. According to number of rotatable bonds, the distribution of whole commercial drug dataset and 51 sampled drugs were quite similar (shown in Additional file 1: Figure S3), which demonstrated that our testing samples have a wide representation.

To analyze of the performance of the prediction, we performed the receiver operating curve (ROC) analysis [39], which is a graphical plot to illustrate the diagnostic ability of a binary classifier system. According to its discrimination threshold, the area under the ROC (AUC) values can be used to evaluate the ability to distinguish

between target and non-target. The known targets of each drug were considered as positive samples, the other proteins in our screening dataset were considered as negative set. Although it does not eliminate the possibility that some of them may interact with these drugs, the number of this kinds of protein is less. In our performance test, ROC analysis was used to compare the performance of the prediction between MM/PBSA and Xscore. The AUC was computed based on the following: If the true targets are ranked in the top 10%, it was considered as true positive. If the true targets are ranked out side of the top 10%, it was considered as false negative. If the non-targets are ranked in the top 10%, it was considered as false positive. If the non-targets are ranked out side of the top 10%, it was considered as true negative. Figure 2 shows the ROC curves and the AUC, which is used to assess the discriminative performance of MM/PBSA (AUC=0.842) and XScore (AUC=0.713). It shows that MM/PBSA outperforms XScore in our performance test, which could be due to the nature of the general applicability and the universal physical scale of the energy calculation methods [40]. In addition, we also retain a higher false positive rate for MM/PBSA (21.4%) and Xscore (40.9%). It may probably due to that the number of negative sample is much larger, hence even a low error rate of negative samples may cause many false positive predictions.

The binding free energies calculated by MM/PBSA method were further analyzed to examine the binding of a variety of proteins to drug (listed in Additional file 1: Table S2). The “TRUE” value under “2%, 5%, and

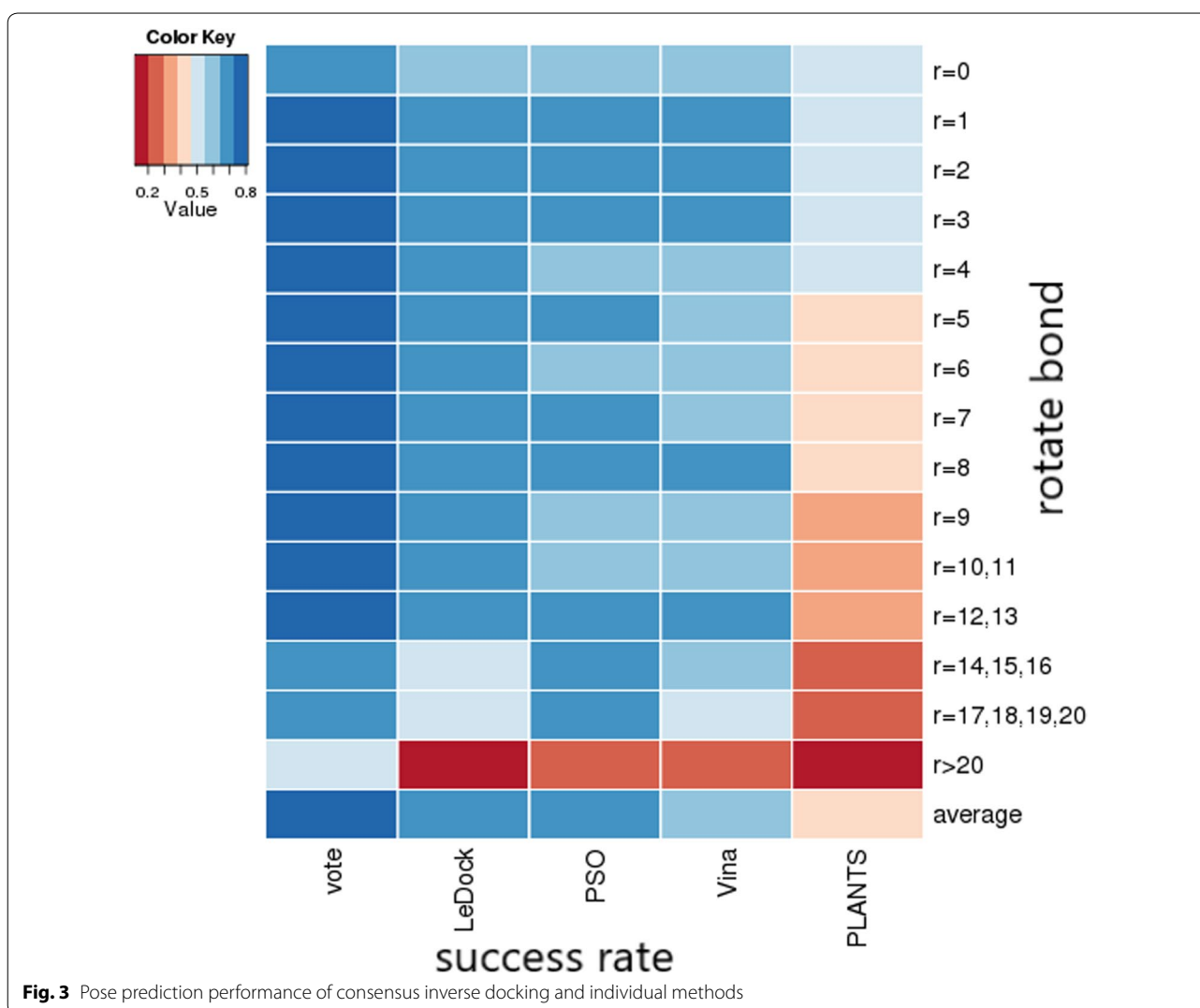


**Fig. 2** The specificity and sensitivity of ACID performance on distinguishing target and non-target of drugs based on MM/PBSA and X-Score

10%” column means that the known targets of the testing drug are identified in the top 2%, 5%, and 10% of the corresponding results. While “FALSE” means the known targets are identified out of the top 10%. As shown in Additional file 1: Table S3, 35 assessed drugs showed significant enrichment of their known targets in the top 10%. In addition, 18 assessed drugs were identified in the top 2%. Therefore, the top 2%, top 5% and top 10% prediction success rate were 35.29%, 52.94% and 68.63% respectively. Taking the tricyclic antidepressants Amitriptyline as an example, 9 known targets out of 11 extracted from literatures and other databases was identified in top 10%. 5J03 appeared among top 11% ranked proteins. 4PMP is a false negative as it did not appear among the 100 best ranked structures.

In order to evaluate if there is an improvement, the conformation prediction performance of CID protocol was compared with individual docking method. According

to the criterion of top 10%, CID protocol showed significant higher pose prediction performance (74.4%), which is around 10% improvement in comparison with the best result obtained from LEDOCK (64%). The prediction performance of other individual docking method is 64% (PSOVina), 63% (Vina), 42% (PLANTS), which are statistically analyzed according to the successfully predicted drugs of 30 in LEDOCK, 30 in PSOVina, 29 in Vina, 20 in PLANTS. In addition, it is important to evaluate that if the docking accuracy can be improved on ligands with more rotatable bonds. The novel CID protocol showed a higher successful rate in a wider range of rotatable bonds compared with any individual docking method. The distribution of the docking results according to the number of rotatable bonds are shown in Fig. 3. Therefore, it was proved that CID protocol may have relatively higher prediction performance than these single docking methods.



**Fig. 3** Pose prediction performance of consensus inverse docking and individual methods

Meanwhile, we also compared the prediction performance of ACID with other drug repurposing prediction tools. Due to the different requirement in drug repurposing study, there was not a uniform standard or a same dataset to evaluate drug repurposing prediction performance. Hence, we use several criterion like AUC and TOP as indicators to evaluate the predictive performance of these studies. Compared with other drug repurposing prediction tools, the AUC indicator of ACID is 0.84, which is a little lower than idTarget. But the sample set of ACID is 51 drugs and 91 known targets, which much larger than idTarget and TarFisDock. In addition, ACID can find 62 known targets in Top 2%, 76 known targets in Top 5%, and 91 known targets in Top 10%, which is better than TarFisDock. Compared with similarity comparison based approaches, the prediction accuracy of ACID are still dominant. However, due to the nature of structural comparison between small molecules, the similarity comparison based approaches may offer advantages such as faster computations and a larger tested sample number. While, docking based approaches includes three dimensional structures, structural optimization, conformational search, and binding energy calculation, which would obviously increase the computational cost. Thus the test sample set is much smaller than similarity

approach. However, they can potentially identify novel targets for the drug which may be relevant for its mechanism of action or side effect profile. Based on the above analysis, we can infer that ACID keeps better or comparative predictive ability compared with similar tools. The detailed methods, sample sets, and accuracy of comparison were summarized in Table 1 [10, 11, 13, 41–44].

#### Server usage and case study

In order to make online consensus inverse docking available, we build a public web server ACID. The bench-scientists can take advantage of the consensus inverse docking method. Data collection, integration, web interface, and applications of ACID were shown in Fig. 4. One can search a commercial drug automatically by entering keywords in the keyword search box, such as drug name, CAS no or InChI key. As shown in Fig. 5, the drug repurposing tasks can be submitted either by uploading or drawing molecule in the JSME plugin. Then, each ligand was converted into the Simplified Molecular Input Line Entry Specification (SMILES) representation by OpenBabel [45] tools (<http://openbabel.sourceforge.net/>). The 3D input of each ligand was produced from its SMILES using Corina (<http://www.mol-net.de>) [46]. In addition, the user need to customize target list from target database.

**Table 1** Several drug repurposing tools compared with ACID

Name	Method	Sample set <sup>a</sup>	Prediction performance		Date of last update	Refs.
			AUC <sup>b</sup>	TOP(2%/5%/10%) <sup>c</sup>		
Similarity comparison based approaches						
ChemMapper	3D similarity approach	216/7069	0.7	–	Dec 2016	[25]
ChemProt 3.0	2D similarity approach	248/1700	0.827	–	Jan 2015	[26]
HitPick	1NN similarity search approach	3430/3116926	0.61 <sup>d</sup>	–	May 2013	[27]
SwissTarget-prediction	Combination of 2D and 3D similarity approach	346/1730	0.87	–	Apr 2014	[28]
Docking algorithm based approaches						
idTarget	Divide and conquer based docking approach	1/3/1161, 1/4/1161	0.89, 0.91	–	Aug 2015	[13]
INVDOCK	Inverse docking approach	2/23/2700	–	50% <sup>e</sup>	May 2001	[10]
TarFisDock	Reverse docking approach	1/10/37, ... 1/12/371	–	33%/33%/58%, 30%/20%/50%	Aug 2014	[11]
ACID	Consensus inverse docking approach	51/133/831	0.84	47%/57%/68%	Dec 2018	

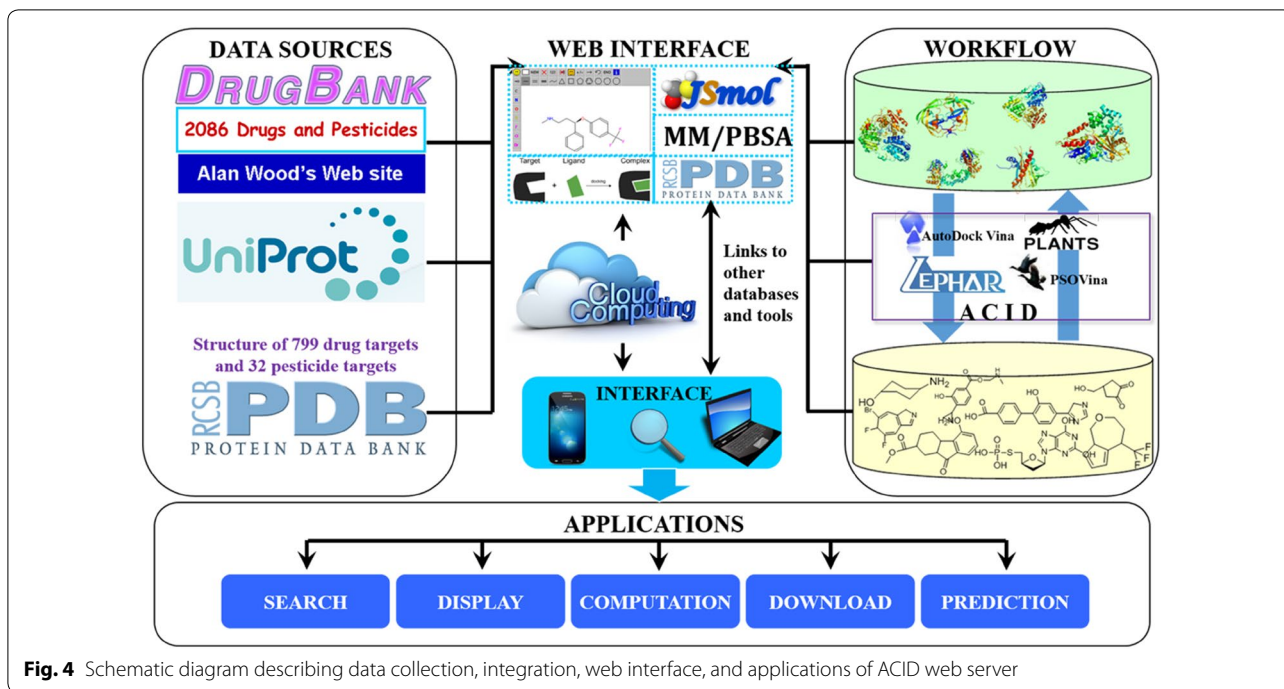
<sup>a</sup> The sample set is number of positive/negative interactions for the similarity comparison based approaches, and is number of drugs/known targets/decoys for docking algorithm based approaches

<sup>b</sup> The AUC (Area Under Curve) is used to represent the prediction performance in the references cited, the closer the AUC value is to 1, the better the prediction performance is

<sup>c</sup> The TOP is the percentage of the top 2%/5%/10% candidates identified by the tools (except INVDOCK) to represent the prediction performance in the references cited, the higher the value of the TOP, the better the performance

<sup>d</sup> For HitPick, a sensitivity of 60.94%, a specificity of 99.99% and a precision of 92.11% is indicated in the references cited, normally, we can infer that the AUC of this tool is smaller than 0.61

<sup>e</sup> For INVDOCK, the TOP is the percentage of candidates identified by the tool, but the top percentage isn't indicated in the references cited, the maximum value 50 is indicated



**Fig. 4** Schematic diagram describing data collection, integration, web interface, and applications of ACID web server

**ACID**  
 Auto in silico Consensus Inverse Docking  
 Home Browse Submit Jobs Help Citation&Contact

**ACID**  
 Auto in silico Consensus Inverse Docking  
 2. Provide active compound  
 Draw compound Or upload compound

Consensus Inverse Docking for Drug Repurposing

1. Select Target Sets (which your active compound most likely to interact with)

Oxidoreductase	<input type="checkbox"/>	Oxidoreductase			
Transferase	<input type="checkbox"/>	Transferase			
Hydrolase	<input checked="" type="checkbox"/>	Hydrolase			
Others	<input type="checkbox"/>	Others			
Lyase	<input checked="" type="checkbox"/>	Lyase			
Transport protein	<input type="checkbox"/>	Transport			
Signaling protein	<input type="checkbox"/>	Signaling			
Ligase	<input type="checkbox"/>	Ligase			
Isomerase	<input type="checkbox"/>	Isomerase			
	<input type="checkbox"/>	Transcription			

2. Provide active compound

0 tasks are Queue! / 0 tasks are Running! / 187 tasks are Finished!

Id	Job id	Ligand name	Target sets
220	R309fgjt4503889	AA	ALL
219	R482bcsvz703773	RA	ALL

**Fig. 5** A screenshot montage of some usages of ACID. The screenshot of browse, submit, and jobs modules of ACID, including basic target-drug information, target classification, job submitting, and task management



An ID number is generated for the submitted job. The user can use the ID to check the status of the job on this web server. The binding models (in PDB format) of the molecule bound with the candidate targets can be downloaded through the “Download” hyperlink or browsed after clicking the “Show” hyperlink.

To evaluate the usage of the ACID web server, two examples are presented here. First, we show a test case using Citalopram as the query structure to find its potential target proteins via ACID server. Table S3 gives the results of predicted binding affinities. The protein target of Citalopram, namely sodium-dependent serotonin transporter (Rank 1, top 2%) as validated in the scientific report [47] are identified by ACID. Interestingly, the binding pose of Citalopram against sodium-dependent serotonin transporter with the rmsd of 0.98 Å compared to the crystal pose, indicating the reliability of this server. Another example shows that not only the intended targets could be identified by ACID, but also other proteins, leading to ‘off-target’ effects, which may have pharmacological consequences for drug repurposing. Amitriptyline is a classic medicine with multiple targets. The primary use is to treat a number of mental illnesses. It is particularly noteworthy that a very novel Amitriptyline repurposing is for treatment of triple-negative breast cancer by targeting on Poly (ADP-ribose) polymerase-1 (PARP1) [48], which is also predicted in the top 10% (rank 59) by ACID server. In addition, other uses include prevention of migraines, treatment of neuropathic pain such as fibromyalgia and postherpetic neuralgia.

## Conclusion

At the end of block-buster era for drug discovery, drug repurposing is a promising approach to address the ‘productivity gap’ that the global pharmaceutical giants are currently facing, which will improve the drug-discovery productivity. Inverse docking is proving to be a powerful tool for drug repurposing, which involves docking a drug in the potential binding cavities of a set of clinically relevant macromolecular targets. The critical issues related to inverse docking part are the prediction of correct binding pose and the estimation of some measure of the binding affinity. We have evaluated of several docking methods for inverse docking applications since the effectiveness of these methods in multiple target identification is unclear. A consensus inverse docking protocol was developed, which has a ~10% enhancement in success rate compared with the best single docking algorithm. Finally, an comprehensive web platform with a user-friendly interface was designed based on this protocol for drug repurposing to significantly reduce user time for data gathering and multi-step analysis without human intervention, which consists of the following three tools: (i) an automated consensus inverse docking

workflow program, (ii) a compound database containing 2086 approved drugs with original therapeutic information, (iii) a known target database containing 831 protein structures from PDB covering 30 therapeutic areas. Differentiated with other tools, ACID outperforms other standalone algorithm in a better accuracy and more efficient way in summary.

## Supplementary information

**Supplementary information** accompanies this paper at <https://doi.org/10.1186/s13321-019-0394-z>.

**Additional file 1.** Additional tables and figures.

## Abbreviations

ADP-ribose: adenosine diphosphate ribose; AUC: area under the ROC curve; CAS: chemical abstracts service; CID: consensus inverse docking; JSME: JavaScript Molecule Editor; InChI: international chemical identifier; MM/PBSA: molecular mechanics/Poisson–Boltzmann surface are; NIH: The National Institutes of Health; PDB: protein data bank; NMR: nuclear magnetic resonance; PDTD: potential drug target database; RMSD: root-mean-square deviation; ROC: receiver operating characteristic curve; SMILES: simplified molecular input line entry specification.

## Acknowledgements

The authors thank Prof. C. Y. Hu from University of Hawaii for advice during the writing.

## Authors’ contributions

G-FH and G-FY initiated the consensus inverse docking study. FW, C-ZL, and S-WS developed the protocol of consensus inverse docking. FW and F-XW tested the performance described in the paper. FW and C-ZL developed the server and performed the analyses. FW, F-XW, and C-YJ set up the server. G-FH, G-FY, and FW wrote the manuscript. All authors read and approved the final manuscript.

## Funding

This research was supported in part by the National Key R&D Program (2017YFD0200501), the National Natural Science Foundation of China (Nos. 21772059, 91853127, and 31960548).

## Availability of data and materials

All source code is available under open licenses on GitHub repository: <https://github.com/fwangccnu/ACID>. All datasets of this study can be downloaded under open licenses from the download page of the free web server <http://chemyang.cnu.edu.cn/ccb/server/ACID>.

## Competing interests

The authors declare that they have no competing interests.

## Author details

<sup>1</sup> Key Laboratory of Pesticide & Chemical Biology, Ministry of Education, College of Chemistry, Central China Normal University, Wuhan 430079, People's Republic of China. <sup>2</sup> International Joint Research Center for Intelligent Biosensor Technology and Health, Central China Normal University, Wuhan 430079, China. <sup>3</sup> State Key Laboratory Breeding Base of Green Pesticide and Agricultural Bioengineering, Key Laboratory of Green Pesticide and Agricultural Bioengineering, Ministry of Education, Research and Development Center for Fine Chemicals, Guizhou University, Guiyang 550025, People's Republic of China. <sup>4</sup> Collaborative Innovation Center of Chemical Science and Engineering, Tianjing 300072, People's Republic of China.

Received: 22 August 2019 Accepted: 9 November 2019  
Published online: 27 November 2019

## References

1. Shih HP, Zhang XD, Aronov AM (2018) Drug discovery effectiveness from the standpoint of therapeutic mechanisms and indications. *Nat Rev Drug Discov* 17:19–33
2. Scannell JW, Blanckley A, Boldon H, Warrington B (2012) Diagnosing the decline in pharmaceutical R&D efficiency. *Nat Rev Drug Discov* 11:191–200
3. Anighoro A, Bajorath J, Rastelli G (2014) Polypharmacology: challenges and opportunities in drug discovery. *J Med Chem* 57:7874–7887
4. Santos R, Ursu O, Gaulton A, Bento AP, Donadi RS, Bologa CG, Karlsson A, Al-Lazikani B, Hersey A, Oprea TI, Overington JP (2017) A comprehensive map of molecular drug targets. *Nat Rev Drug Discov* 16:19–34
5. Dudley JT, Deshpande T, Butte AJ (2011) Exploiting drug-disease relationships for computational drug repositioning. *Brief Bioinform* 12:303–311
6. Corsello SM, Bittker JA, Liu Z, Gould J, McCarren P, Hirschman JE, Johnston SE, Vrcic A, Wong B, Khan M et al (2017) The drug repurposing hub: a next-generation drug library and information resource. *Nat Med* 23:405–408
7. Pushpakom S, Iorio F, Eyers PA, Escott KJ, Hopper S, Wells A, Doig A, Guilliams T, Latimer J, McNamee C et al (2018) Drug repurposing: progress, challenges and recommendations. *Nat Rev Drug Discov* 18:41–58
8. Kharkar PS, Warrior S, Gaud RS (2014) Reverse docking: a powerful tool for drug repositioning and drug rescue. *Futur Med Chem* 6:333–342
9. Lee A, Lee K, Kim D (2016) Using reverse docking for target identification and its applications for drug discovery. *Expert Opin Drug Dis* 11:707–715
10. Chen YZ, Zhi DG (2001) Ligand-protein inverse docking and its potential use in the computer search of protein targets of a small molecule. *Proteins* 43:217–226
11. Zhang H, Li H, Jiang H, Shen J, Chen K, Yang K, Yu K, Kang L, Zhu W, Luo X et al (2006) TarFisDock: a web server for identifying drug targets with docking approach. *Nucleic Acids Res* 34:W219–W224
12. Gao Z, Li H, Zhang H, Liu X, Kang L, Luo X, Zhu W, Chen K, Wang X, Jiang H (2008) PDTD: a web-accessible protein database for drug target identification. *BMC Bioinform* 9:104–111
13. Wang JC, Chu PY, Chen CM, Lin JH (2012) idTarget: a web server for identifying protein targets of small chemical molecules with robust scoring functions and a divide-and-conquer docking approach. *Nucleic Acids Res* 40:W393–W399
14. Liu Z, Fang H, Reagan K, Xu X, Mendrick DL, Slikker W, Tong W (2013) In silico drug repositioning—what we need to know. *Drug Discov Today* 18:110–115
15. Plewczynski D, Łażniewski M, Grotthuss MV, Rychlewski L, Ginalski K (2011) VoteDock: consensus docking method for prediction of protein–ligand interactions. *J Comput Chem* 32:568–581
16. Wang R, Fang X, Lu Y, Wang S (2004) The PDBbind database: collection of binding affinities for protein–ligand complexes with known three-dimensional structures. *J Med Chem* 47:2977–2980
17. Jones G, Willett P, Glen RC, Leach AR, Taylor R (1997) Development and validation of a genetic algorithm for flexible docking. *J Mol Biol* 267:727–748
18. Li Y, Liu Z, Li J, Han L, Liu J, Zhao Z, Wang R (2014) Comparative assessment of scoring functions on an updated benchmark: 1. Compilation of the test set. *J Chem Inf Model* 54:1700–1716
19. Maier JA, Martinez C, Kasavajhala K, Wickstrom L, Hauser KE, Simmerling C (2015) ff14SB: improving the accuracy of protein side chain and backbone parameters from ff99SB. *J Chem Theory Comput* 11:3696–3713
20. Garrett MM, Ruth H (2009) Software news and updates AutoDock4 and AutoDockTools4: automated docking with selective receptor flexibility. *J Comput Chem* 30:2785–2791
21. Trott O, Olson AJ (2010) Software news and UPDATE AutoDock Vina: improving the speed and accuracy of docking with a new scoring function, efficient optimization, and multithreading. *J Comput Chem* 31:455–461
22. Allen WJ, Balius TE, Mukherjee S, Brozell SR, Moustakas DT, Lang PT, Case DA, Kuntz ID, Rizzo RC (2015) DOCK 6: impact of new features and current docking performance. *J Comput Chem* 36:1132–1156
23. Korb O, Stutzle T, Exner TE (2009) Empirical scoring functions for advanced protein–ligand docking with plants. *J Chem Inf Model* 49:84–96
24. Ng MCK, Fong S, Siu SWI (2015) PSOVina: the hybrid particle swarm optimization algorithm for protein–ligand docking. *J Bioinform Comput Biol* 13:1–18
25. Verdonk ML, Cole JC, Hartshorn MJ, Murray CW, Taylor RD (2003) Improved protein–ligand docking using GOLD. *Proteins* 52:609–623
26. Case DA (2016) Kollman PA Amber 2016. University of California, San Francisco
27. Sun H, Li Y, Tian S, Xu L, Hou T (2014) Assessing the performance of MM/PBSA and MM/GBSA methods. 4. Accuracies of MM/PBSA and MM/GBSA methodologies evaluated by various simulation protocols using PDBbind data set. *Phys Chem Chem Phys* 16:16719–16729
28. Chen F, Liu H, Sun H, Pan P, Li Y, Li D, Hou T (2016) Assessing the performance of the MM/PBSA and MM/GBSA methods. 6. Capability to predict protein–protein binding free energies and re-rank binding poses generated by protein–protein docking. *Phys Chem Chem Phys* 18:22129–22139
29. Wang R, Lai L, Wang S (2002) Further development and validation of empirical scoring functions for structure-based binding affinity prediction. *J Comput Aided Mol Des* 16:11–26
30. Cristian OP, Jaime RM (2007) Comparative evaluation of MMPBSA and XSCORE to compute binding free energy in XIAP-peptide complexes. *J Chem Inf Model* 47:134–142
31. Wang R, Lu Y, Wang S (2003) Comparative evaluation of 11 scoring functions for molecular docking. *J Med Chem* 46:2287–2303
32. Hou TJ, Wang JM, Li YY, Wang W (2011) Assessing the performance of the molecular mechanics/poisson boltzmann surface area and molecular mechanics/generalized born surface area methods. II. The accuracy of ranking poses generated from docking. *J Comput Chem* 32:866–877
33. Hao GF, Zhu XL, Ji FQ, Zhang L, Yang GF, Zhan CG (2009) Understanding the mechanism of drug resistance due to a codon deletion in protoporphyrinogen oxidase through computational modeling. *J Phys Chem B* 113:4865–4875
34. Paul N, Rognan D (2002) ConsDock: a new program for the consensus analysis of protein–ligand interactions. *Proteins* 47:521–533
35. Halgren TA (1996) Merck molecular force field. I. Basis, form, scope, parameterization, and performance of MMFF94. *J Comput Chem* 17:490–519
36. Wishart DS, Feunang YD, Guo AC, Lo EJ, Marcu A, Grant JR, Sajed T, Johnson D, Li C, Sayeeda Z et al (2018) DrugBank 5.0: a major update to the DrugBank database for 2018. *Nucleic Acids Res* 46:D1074–D1082
37. Wu CH, Apweiler R, Bairoch A, Natale DA, Barker WC, Boeckmann B, Ferro S, Gasteiger E, Huang HZ, Lopez R et al (2006) The universal protein resource (UniProt): an expanding universe of protein information. *Nucleic Acids Res* 34:D187–D191
38. Berman H, Henrick K, Nakamura H, Markley JL (2007) The worldwide protein data bank (wwPDB): ensuring a single, uniform archive of PDB data. *Nucleic Acids Res* 35:D301–D303
39. Sing T, Sander O, Beerwinkel N, Lengauer T (2005) ROCr: visualizing classifier performance in R. *Bioinformatics* 21:3940–3941
40. Wang JC, Lin JH, Chen CM, Perryman AL, Olson AJ (2011) Robust scoring functions for protein–ligand interactions with quantum chemical charge models. *J Chem Inf Model* 51:2528–2537
41. Liu XF, Ouyang SS, Yu BA, Liu YB, Huang K, Gong JY, Zheng SY, Li ZH, Li HL, Jiang HL (2010) PharmMapper server: a web server for potential drug target identification using pharmacophore mapping approach. *Nucleic Acids Res* 38:W609–W614
42. Kringelum J, Kjaerulff SK, Brunak S, Lund O, Oprea TI, Taboureu O (2016) ChemProt-3.0: a global chemical biology diseases mapping. *Datab J Biol Datab Curation* 2016:1–7
43. Liu XP, Vogt I, Haque T, Campillos M (2013) HitPick: a web server for hit identification and target prediction of chemical screenings. *Bioinformatics* 29:1910–1912
44. Gfeller D, Grosdidier A, Wirth M, Daina A, Michielin O, Zoete V (2014) SwissTargetPrediction: a web server for target prediction of bioactive small molecules. *Nucleic Acids Res* 42:W32–W38
45. O’Boyle NM, Banck M, James CA, Morley C, Vandermeersch T, Hutchison GR (2011) Open babel: an open chemical toolbox. *J Cheminformatics* 3:33–47

46. Sadowski J, Schwab CH, Gasteiger J (2003) 3D structure generation and conformational searching. *Computational medicinal chemistry and drug discovery*. Dekker Inc, New York, pp 2151–2212
47. Plenge P, Wiborg O (2005) High- and low-affinity binding of *S*-citalopram to the human serotonin transporter mutated at 20 putatively important amino acid positions. *Neurosci Lett* 383:203–208
48. Fu L, Wang S, Wang X, Wang P, Zheng Y, Yao D, Guo M, Zhang L, Ouyang L (2016) Crystal structure-based discovery of a novel synthesized PARP1

inhibitor (OL-1) with apoptosis-inducing mechanisms in triple-negative breast cancer. *Sci Rep* 6:3–18

### Publisher's Note

Springer Nature remains neutral with regard to jurisdictional claims in published maps and institutional affiliations.

**Ready to submit your research? Choose BMC and benefit from:**

- fast, convenient online submission
- thorough peer review by experienced researchers in your field
- rapid publication on acceptance
- support for research data, including large and complex data types
- gold Open Access which fosters wider collaboration and increased citations
- maximum visibility for your research: over 100M website views per year

**At BMC, research is always in progress.**

Learn more [biomedcentral.com/submissions](https://biomedcentral.com/submissions)

