



COVID-19 and regional differences in the timeliness of hip-fracture surgery: an interrupted time-series analysis

Davide Golinelli¹, Jacopo Lenzi¹, Emanuele Adorno¹, Maria Michela Gianino² and Maria Pia Fantini¹

¹ Department of Biomedical and Neuromotor Sciences, University of Bologna, Bologna, Italy

² Department of Public Health Sciences and Pediatrics, University of Turin, Turin, Italy

ABSTRACT

Background. It is of great importance to examine the impact of the healthcare reorganization adopted to confront the COVID-19 pandemic on the quality of care provided to non-COVID-19 patients. The aim of this study is to assess the impact of the COVID-19 national lockdown (March 9, 2020) on the quality of care provided to patients with hip fracture (HF) in Piedmont and Emilia-Romagna, two large regions of northern Italy severely hit by the pandemic.

Methods. We calculated the percentage of HF patients undergoing surgery within 2 days of hospital admission. An interrupted time-series analysis was performed on weekly data from December 11, 2019 to June 9, 2020 (≈ 6 months), interrupting the series in the 2nd week of March. The same data observed the year before were included as a control time series with no “intervention” (lockdown) in the middle of the observation period.

Results. Before the lockdown, 2-day surgery was 69.9% in Piedmont and 79.2% in Emilia-Romagna; after the lockdown, these proportions were equal to 69.8% (-0.1%) and 69.3% (-9.9%), respectively. While Piedmont did not experience any drop in the amount of surgery, Emilia-Romagna exhibited a significant decline at a weekly rate of -1.29% (95% CI [-1.71 to -0.88]). Divergent trend patterns in the two study regions reflect local differences in pandemic timing as well as in healthcare services capacity, management, and emergency preparedness.

Submitted 25 June 2021
Accepted 3 August 2021
Published 31 August 2021

Corresponding author
Davide Golinelli,
davide.golinelli@unibo.it

Academic editor
Shinya Tsuzuki

Additional Information and
Declarations can be found on
page 14

DOI 10.7717/peerj.12046

© Copyright
2021 Golinelli et al.

Distributed under
Creative Commons CC-BY 4.0

OPEN ACCESS

Subjects Epidemiology, Evidence Based Medicine, Health Policy, Orthopedics, Surgery and Surgical Specialties

Keywords Hip Fractures, COVID-19, Healthcare quality, Frail elderly, Interrupted time series analysis, Italy, Surgery, Timeliness

INTRODUCTION

Worldwide, hip fracture (HF) represents an important public health concern that determines relevant functional impairments in the individuals who experience it, especially the elderly (*Tedesco et al., 2018; Svedbom et al., 2013*). Due to the increasing incidence of osteoporosis, the global number of HFs will reach approximately 8.2 million in 2050 (*Sambrook & Cooper, 2006*). In Italy, HFs accounted for 99,103 hospitalizations, 1,122,714 occupant days and 77,543 surgical procedures in 2018.

The growing burden that HF causes on healthcare systems also has to do with the intensive use of healthcare resources required by this condition (*Beaupre et al., 2019*;

Haentjens et al., 2010). HF patients represent a particularly challenging population (*Hansen et al., 2013; Moja et al., 2012*), due to the high post-operative mortality rate caused by surgery, functional impairment, and limited mobility (*Beaupre et al., 2019; Haentjens et al., 2010; Braithwaite, Col & Wong, 2003*).

Timely surgery within 48 h of hospital admission for HF is a well-established strategy that leads to better functional outcomes and lower mortality rates (*Moja et al., 2012; Carretta et al., 2011; Shiga, Wajima & Ohe, 2008*). The UK National Institute for Health and Care Excellence (NICE) and other international guidelines indicate 48 h as the ideal time to operate on a patient with HF. Scientific evidence points out that the earlier the surgery, the better the outcomes in terms of mortality, complications, length of hospital stay, time required for rehabilitation, and patient quality of life (*National Institute for Health and Care Excellence (NICE), 2017; Society of Orthopaedics and Traumatology (SIOT), 2021; Bhandari & Swiontkowski, 2017*). For this reason, the percentage of surgical interventions performed within 2 days of hospital admission has become one of the most used health indicators to assess the performance and quality of care. In Italy, specifically, this indicator is used by the *Programma Nazionale Esiti* (National Outcomes Program) to measure and monitor healthcare facilities' performance and standards of care (*Ministero della Salute Agenas, 2019*).

In Europe, more than three quarters (76%) of HF patients aged 65 and over underwent surgery within 48 h of hospital admission in 2017. This proportion was greater than 95% in Denmark and the Netherlands, and around 40% in Latvia and Portugal (*OECD/European Union, 2020*). In Italy, this indicator has progressively improved in recent years, reaching a national average of around 70% in 2017 (*Ministero della Salute Agenas, 2019*).

In late February of 2020, the novel coronavirus disease (COVID-19) (*Gibertoni et al., 2021; Lavezzo et al., 2020*) started to spread aggressively around many bordering provinces of the largest and most productive regions of northern Italy: Lombardy, Emilia-Romagna, Veneto, and Piedmont. The first cluster was detected in Lombardy on February 21, 2020—in the following days, the government adopted an increasing number of decrees to limit large social gatherings, closing schools, universities, bars, and restaurants. Following the stay-at-home decree of March 9, 2020, all non-essential business and services were closed, and the entire country was put under lockdown.

The COVID-19 outbreak had a huge impact on the Italian healthcare system: usual treatment pathways were disrupted, and hospitals were reorganized to face this challenge using the limited healthcare resources available (*Placella et al., 2020*). The Italian National Health Service (*Servizio Sanitario Nazionale* (SSN)) struggled to maintain and enhance the surge capacity of services, goods and healthcare workers in order to preserve high standards of care both to COVID-19 and non-COVID-19 patients. To keep COVID-19 and non-COVID-19 patients separated, “Hub and Spoke” models were created (*Regione Emilia Romagna Direzione Generale Cura della Persona Salute e Welfare, 2020*), and COVID-19-dedicated hospitals were set up to isolate contagious patients. Especially during the national lockdown from March 9 to May 4, elective surgery was cancelled, and only trauma, oncologic and urgent surgeries were allowed (*Placella et al., 2020*).

As such, we believe that it is of great importance to examine the impact of the healthcare reorganization adopted to confront the COVID-19 pandemic on the quality of care provided by Italy's SSN for conditions of major public concern such as HF. In this study, we assessed whether the imposition of the national lockdown on March 9, 2020 resulted in a shift in the percentage of patients who received timely surgery for HF compared with that of the pre-lockdown period. Separate analyses were performed on two of the regions of northern Italy most hit by the spread of SARS-CoV-2: Piedmont and Emilia-Romagna, with 4.4 and 4.5 million inhabitants, respectively, as of 2019 (Golinelli et al., 2017). As illustrated in Fig. S1, Emilia-Romagna and Piedmont were among the regions of Italy earliest and hardest affected by COVID-19; in particular, the province of Piacenza, Emilia-Romagna, was one of the areas of Italy hardest hit by the pandemic due to its proximity to the epicenter of the first outbreak in Lombardy (Gibertoni et al., 2021; Gatto et al., 2020; Riviaccio et al., 2020).

Identifying similarities and differences in how the two regions faced this unprecedented crisis can be helpful for setting health priorities and identifying entry points to enhance health-system responsiveness (Williams et al., 2020).

MATERIALS & METHODS

We collected the hospital discharge records (HDRs) of all patients admitted to the hospitals of Piedmont and Emilia-Romagna with a principal or secondary diagnosis of hip fracture (ICD-9-CM code 820). In keeping with the specification of the indicator adopted by Italy's National Outcomes Program (Ministero della Salute Agenas, 2019), HDRs were excluded from the analysis if at least one of the following criteria was met:

- Non-urgent hospital admission;
- Daytime hospital care, known in Italy as “day hospital admission”, which consists in a one-day admission to the hospital without overnight stay to perform diagnostic procedures and/or surgical, therapeutic or rehabilitative care (Lenzi et al., 2014);
- Transfer from other hospital;
- Age <65 or >100 years;
- Polytrauma (diagnosis-related group 484–487);
- Diagnosis or medical history of malignant tumors (principal/secondary ICD-9-CM code 140.0–208.9, 238.6, V10);
- Death within 1 day of hospital admission and no surgery to repair HF;
- Admission to a spinal injury unit, rehabilitation hospital or long-term care facility.

Hospitalization rates were obtained as the number of hospital admissions for HF in the resident population aged ≥ 65 years per 100,000 inhabitants. Population data were retrieved from the Italian National Institute of Statistics (http://demo.istat.it/index_e.html).

Timely HF surgery among the cases described above was defined as any of the following procedures initiated within 2 calendar days after admission to the hospital: closed reduction of fracture without internal fixation (ICD-9-CM codes 79.00, 79.05); closed reduction of fracture with internal fixation (79.10, 79.15); open reduction of fracture without internal fixation (79.20, 79.25); open reduction of fracture with internal fixation (79.30, 79.35);

total or partial hip replacement (81.51, 81.52). We also investigated the percentage of cases surgically treated the next day (day 1) and on the same day as hospital admission (day 0).

Hospital admission rates were standardized by sex and age (<80, 80–84, 85–89, ≥90 years) with direct standardization to Italy's 2020 elderly population. Percentages of surgery were standardized by sex, age and enhanced Charlson index score (0, 1, ≥2) (Quan *et al.*, 2005), with direct standardization to the overall population of HFs observed in Piedmont and Emilia-Romagna over the study period.

For descriptive purposes, we also gathered some characteristics of the admitting hospitals; more specifically, we collected hospital type/ownership, hospital location, and average annual caseload of hip fractures.

Statistical analysis

Owing to the availability of multiple weekly observations in the pre-lockdown and post-lockdown period, we performed an interrupted time-series analysis (ITSA), an example of quasi-experimental design (Shadish, Cook & Campbell, 2002). Lockdown-period data were collected from March 11, 2020, to June 9, 2020 (13 weeks, *i.e.*, ≈ 3 months), while pre-lockdown data were collected from December 11, 2019 to March 10, 2020 (13 weeks). To reduce any confounding factors, the same data observed in Piedmont and Emilia-Romagna the year before, *i.e.*, between December 11, 2018 and June 10, 2019 (26 weeks), were included as a control time series with no intervention in the middle of the observation period.

A two-group ITSA regression model can be specified as:

$$Y_t = \beta_0 + \beta_1 T_t + \beta_2 X_t + \beta_3 X_t T_t + \beta_4 Z + \beta_5 Z T_t + \beta_6 Z X_t + \beta_7 Z X_t T_t + \varepsilon_t$$

where Y_t is an aggregated outcome variable measured at each time point t , T_t is time since the start of the study, X_t is a dummy variable representing the intervention (pre = 0, post = 1), Z is a dummy variable to denote the cohort assignment (“treatment” or control), and ε_t is the random error term. Here is the interpretation of the seven parameters that constitute the linear model:

- β_0 = intercept of the outcome variable in the control group;
- β_1 = slope of the outcome in the control group until the introduction of the intervention;
- β_2 = change in the level of the outcome that occurs in the period immediately following the introduction of the intervention in the control group;
- β_3 = difference between preintervention and postintervention slopes of the outcome in the control group;
- β_4 = difference in the level between “treatment” and control prior to intervention;
- β_5 = difference in the slope between “treatment” and control prior to intervention;
- β_6 = difference-in-differences of the change of level between “treatment” and control;
- β_7 = difference-in-differences of slopes between “treatment” and control.

As anticipated by the definitions of β_6 and β_7 , causal inference is provided using the difference-in-differences approach, in which between-period changes in a “treatment”/experimental cohort are compared with changes in a control cohort over

a similar timeframe. The two parameters β_4 and β_5 are useful to establish whether the “treatment” and control series are balanced on the level and the trajectory of the outcome variable in the pre-intervention period; if β_4 and β_5 are significantly different from 0, conclusions drawn from β_6 and β_7 are likely to be biased. A visual exemplification of ITSA is provided in Linden and Adams ([Linden & Adams, 2011](#)).

We computed heteroskedasticity-robust standard errors, also known as Newey–West standard errors, to make valid inference about the linear regression coefficients. According to the Cumby–Huizinga test ([Cumby & Huizinga, 1992](#)), there was no evidence of autocorrelation.

In keeping with the specification of the indicator adopted by the Organization for Economic Co-operation and Development, a sensitivity ITSA was performed on HF surgery after excluding HDRs with a diagnosis of hip fracture in secondary position. All analyses were performed using Stata version 15 (Stata Statistical Software: Release 15; StataCorp LP, College Station, TX, USA) ([Linden, 2015](#)). The significance level was set at 5%, and all tests were two-sided. Code and data used to produce the reported results are made available as [Supplemental Files](#).

Ethical approval to undertake this research was granted from the *Comitato Etico di Area Vasta Emilia Centro* (Submission Number IDECOdE-R (233/2019/0SS/AOUBo)). Access to administrative data was conducted in conformity with the Italian Privacy Code (Legislative decree 5496/2003, amended by Legislative Decree 101/2018), which exempts from the obligation to seek written informed consent when using pseudonymized data that are primarily collected for healthcare management and healthcare quality evaluation and improvement. According to Articles 99–110-bis on medical, biomedical, and epidemiological research (Legislative Decree 101/2018), when investigators use data collected by healthcare systems or previous studies, consulting all the participants would represent a disproportionate effort, considering that safeguards such as key-coding (pseudonymization) are in place to protect the data.

RESULTS

Hospital admissions for HF in Piedmont and Emilia-Romagna in the control cohort (December 11, 2018, to June 10, 2019) and in the “treatment” cohort (December 11, 2019 to June 9, 2020) are summarized in [Table 1](#). Both regions experienced a drop in the number of hospitalizations in the 13 weeks following the imposition of the first national lockdown as compared to the previous 13 weeks, although the reduction was more pronounced in Piedmont (Piedmont: 148.8 to 121.6 $\times 100,000$; Emilia-Romagna: 152.2 to 128.7 $\times 100,000$). We registered an increased concentration of admissions to research and university hospitals (Piedmont: 24.0% to 31.4%; Emilia-Romagna: 27.3% to 34.3%), combined with a decrease in the relative number of admissions to LHT and private hospitals (Piedmont: 76.0% to 68.6%; Emilia-Romagna: 72.7% to 65.7%). A summary of patient and hospital characteristics before and after the lockdown is provided in [Table S1](#).

Results of the ITSA on HF hospitalization rates are presented in [Table 2](#) and [Fig. 1](#). In Piedmont, in the second week of March 2020 a strong decrease in weekly hospital

Table 1 Hospital admissions for hip fracture ($\times 100,000$ inhabitants) in Piedmont and Emilia-Romagna, Italy, by 13-week observation period.

Thirteen-week observation period	Piedmont			Emilia-Romagna		
	<i>n</i>	Crude rate	Standardized rate ^a	<i>n</i>	Crude rate	Standardized rate ^a
Dec-11-2018 to Mar-11-2019	1788	161.4	159.5	1720	160.5	153.3
Mar-12-2019 to Jun-10-2019	1687	152.3	150.8	1731	161.6	154.6
Dec-11-2019 to Mar-10-2020	1698	152.2	148.8	1730	160.3	152.2
Mar-11-2020 to Jun-09-2020	1388	124.4	121.6	1465	135.7	128.7

Notes.

^aBy sex and age with direct standardization to Italy's 2020 elderly population (≥ 65 years).

Table 2 Regression table of interrupted time-series analysis on weekly sex- and age-standardized hip-fracture hospitalization rates in Piedmont and Emilia-Romagna before and after Italy's COVID-19 national lockdown.

Variable	Piedmont		Emilia-Romagna	
	Coefficient (95% CI)	<i>P</i> -value	Coefficient (95% CI)	<i>P</i> -value
Intercept	12.59 (11.07, 14.12)	<0.001	12.99 (12.12, 13.87)	<0.001
T_t	-0.06 (-0.24, 0.13)	0.546	-0.17 (-0.29, -0.04)	0.010
X_t	-0.71 (-2.34, 0.91)	0.379	-0.61 (-2.46, 1.24)	0.510
$X_t T_t$	0.12 (-0.14, 0.38)	0.353	0.37 (0.15, 0.58)	0.001
Z	-0.55 (-2.73, 1.64)	0.616	0.04 (-1.08, 1.15)	0.949
ZT_t	-0.04 (-0.32, 0.24)	0.770	-0.04 (-0.19, 0.12)	0.627
ZX_t	-2.22 (-4.88, 0.44)	0.100	-1.52 (-3.69, 0.65)	0.164
$ZX_t T_t$	0.21 (-0.18, 0.60)	0.291	0.06 (-0.20, 0.32)	0.629

Notes.

Data observed the year before (2018/19) are used for comparison. T_t is time since the start of the study (December 11), X_t is an indicator variable that equals 1 in the weeks 11 to 23 of the tropical year (March 11, 2020/March 12, 2019 to June 9, 2020/June 10, 2019), and Z is an indicator variable that equals 1 in the experimental time series (December 11, 2019 to June 9, 2020). The post-lockdown trend between March 11, 2020 and June 9, 2020 can be obtained as $\beta(T_t) + \beta(ZT_t) + \beta(X_t T_t) + \beta(ZX_t T_t)$.

CI, confidence interval.

admissions for HF was observed as compared to the same week of 2019 ($\beta_6 = [7.95-10.89] - [11.21-11.93] = -2.22 \times 100,000$, 95% CI $[-4.88-0.44]$), although this difference failed to achieve statistical significance (P -value = 0.100). In Emilia-Romagna, this difference-in-differences of change of level was weaker ($\beta_6 = [8.43-10.56] - [10.37-10.98] = -1.52 \times 100,000$, 95% CI $[-3.69-0.65]$, P -value = 0.164). In Piedmont, the drop in the number of hospital admissions was followed by a weekly significant increase in the hospitalization rate ($+0.23 \times 100,000$, 95% CI $[0.03-0.43]$, P -value = 0.027), although the difference-in-differences of slopes was not significant ($\beta_7 = [0.23+0.10] - [0.06+0.06] = 0.21 \times 100,000$, 95% CI $[-0.18-0.60]$, P -value = 0.291). Similarly, in Emilia-Romagna the hospitalization rate increased weekly ($+0.22 \times 100,000$, 95% CI $[0.11-0.34]$, P -value <0.001), but the difference-in-differences of slopes was once again not significant ($\beta_7 = [0.22+0.21] - [0.20+0.17] = 0.06 \times 100,000$, 95% CI $[-0.20-0.32]$, P -value = 0.629).

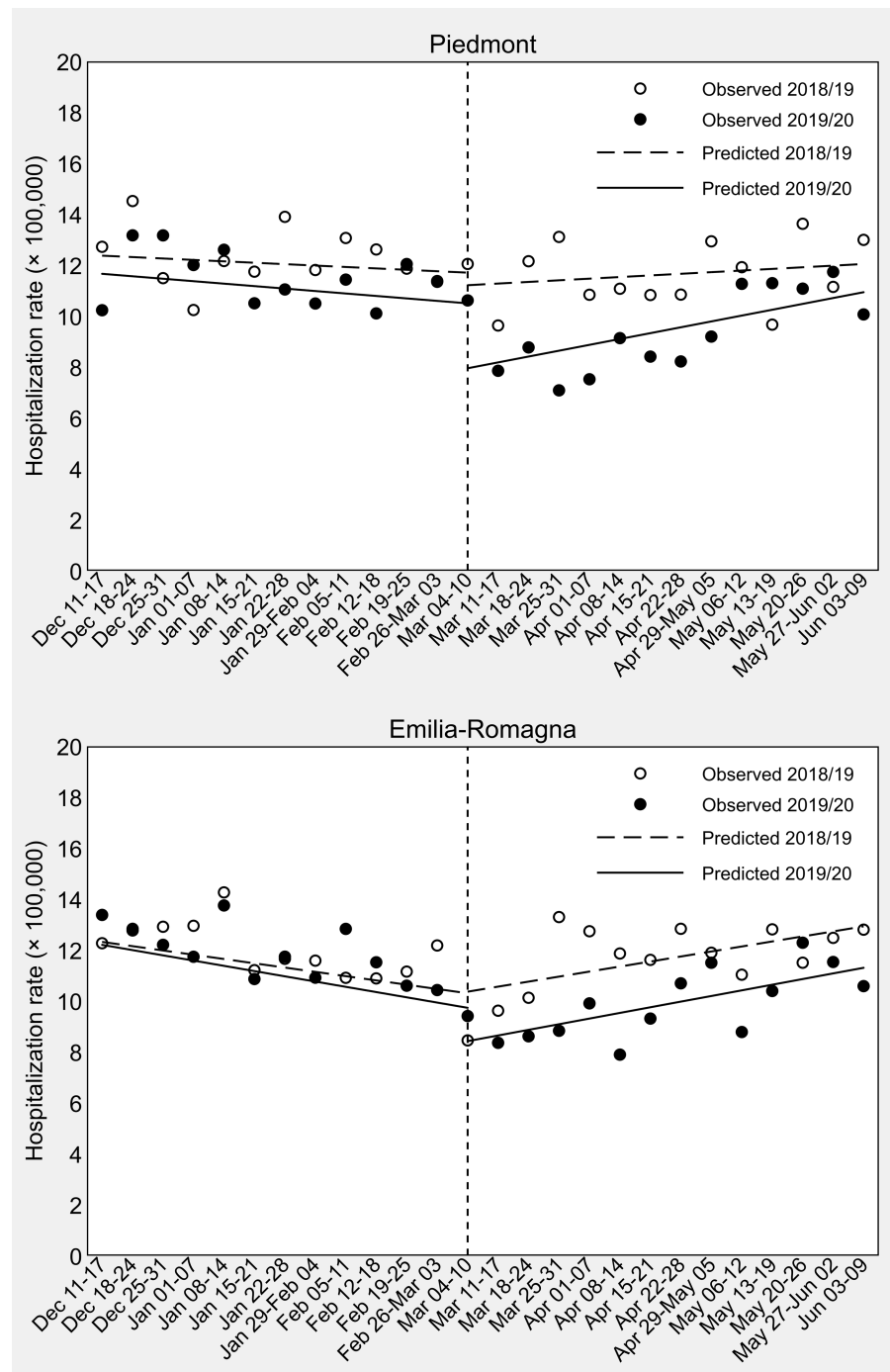


Figure 1 Interrupted time-series analysis of weekly sex- and age-standardized hip-fracture hospitalization rates in Piedmont and Emilia-Romagna in the 13 weeks before and after Italy's COVID-19 national lockdown (dashed vertical line). Data observed the year before (2018/19) are used for comparison. The last day of the control period is June 10, 2019, because 2019 is a common (non-leap) year.

Full-size [DOI: 10.7717/peerj.12046/fig-1](https://doi.org/10.7717/peerj.12046/fig-1)

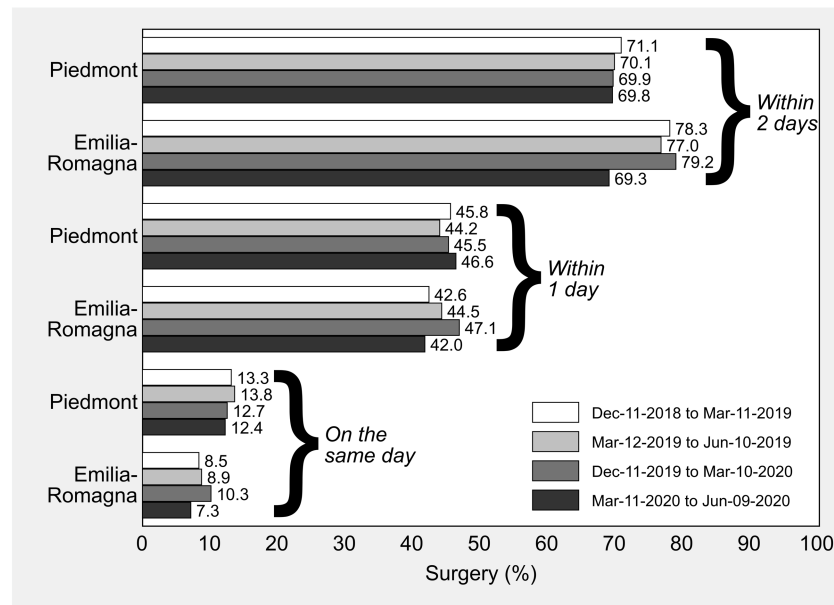


Figure 2 Hip-fracture surgery initiated within 2 days, within 1 day and on the same day as hospital admission in Piedmont and Emilia-Romagna, Italy, by 13-week observation period. All the rates are standardized by sex, age and enhanced Charlson index with direct standardization to the overall composition of hip fractures included in the study.

Full-size DOI: [10.7717/peerj.12046/fig-2](https://doi.org/10.7717/peerj.12046/fig-2)

Percentages of timely HF surgery in Piedmont and Emilia-Romagna in the control cohort (December 11, 2018 to June 10, 2019) and in the “treatment” cohort (December 11, 2019 to June 9, 2020) are illustrated in Fig. 2. In all the study periods preceding the national lockdown, the percentage of surgery initiated within 2 days after hospital admission was higher in Emilia-Romagna than in Piedmont, while between March 11 and June 9, 2020 the standardized percentages of the two regions were similar and just below 70% (Piedmont: 69.8%; Emilia-Romagna: 69.3%).

A visual inspection of the ITSA in Fig. 3 shows that the pattern of change in weekly percentages of surgical care for HF after the imposition of the national lockdown was different in the two study regions. As confirmed by the regression coefficient estimates presented in Table 3, Piedmont did not experience any raise or drop in the amount of surgery from the second week of March 2020. In Emilia-Romagna, on the contrary, after an initial period of stable or even increased timeliness of surgical care, there was a significant decline at a weekly rate of -1.29% for 2-day surgery (95% CI $[-1.71$ to $-0.88]$, P -value <0.001), -2.27% for 1-day surgery (95% CI $[-3.01$ to $-1.54]$, P -value <0.001), and -1.07% for same-day surgery (95% CI $[-1.68$ to $-0.45]$, P -value = 0.001). As shown in Table 3, the difference-in-differences of slopes reached statistical significance for 2-day surgery ($\beta_7 = [-1.29-1.28]-[-0.19-0.59] = -1.79\%$, 95% CI $[-3.37$ to $-0.22]$, P -value = 0.027), 1-day surgery ($\beta_7 = [-2.27-1.61]-[0.07+0.08] = -4.04\%$, 95% CI $[-5.59$ to $-2.49]$, P -value <0.001) as well as same-day surgery ($\beta_7 = [-1.07-0.59]-[0.16+0.34] = -2.15\%$, 95% CI $[-3.15$ to $-1.16]$, P -value <0.001).

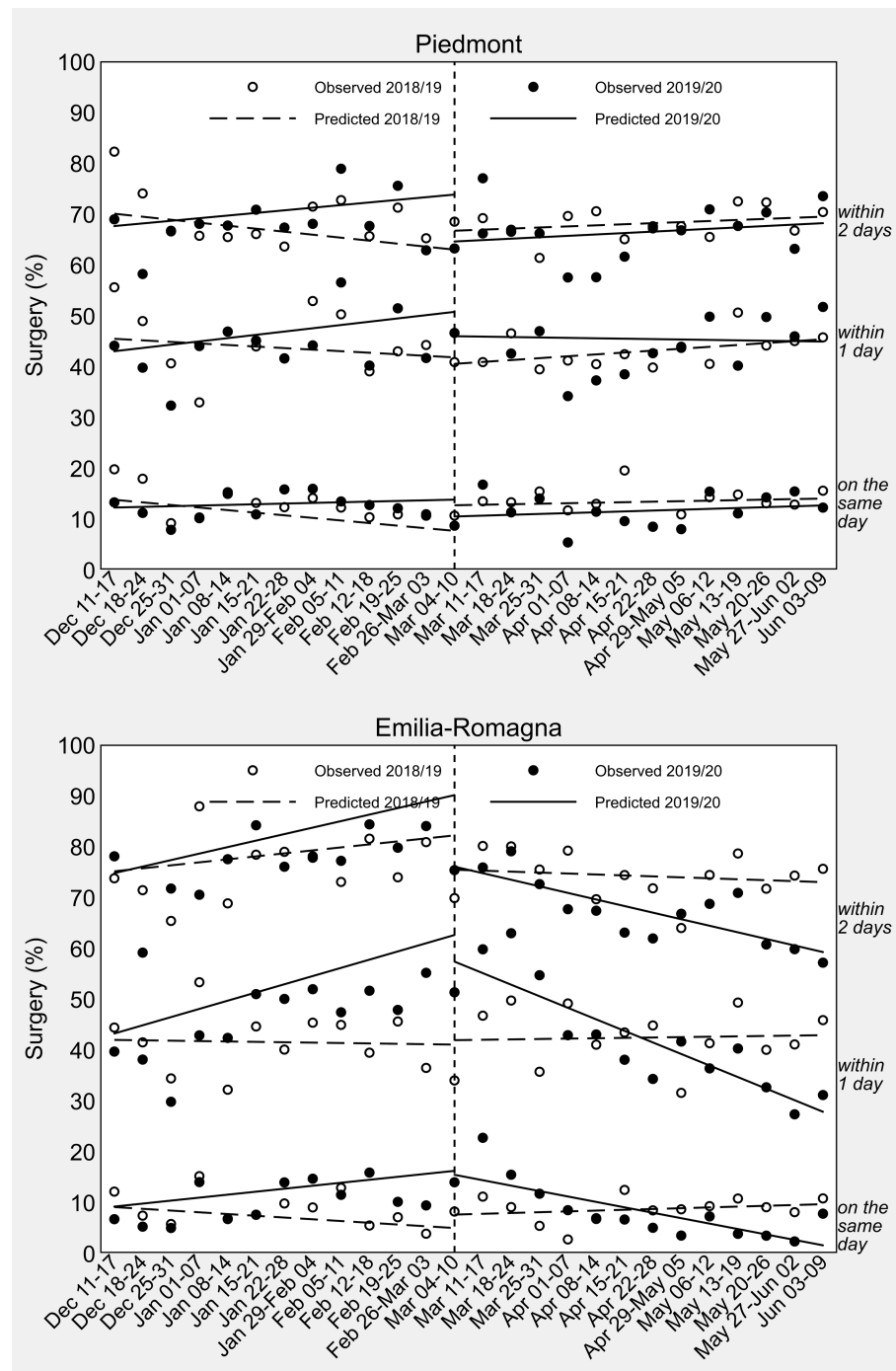


Figure 3 Interrupted time-series analysis of weekly sex-, age- and comorbidity-standardized percentages of hip-fracture surgery in Piedmont and Emilia-Romagna in the 13 weeks before and after Italy's COVID-19 national lockdown (dashed vertical line). Data observed the year before (2018/19) are used for comparison. The last day of the control period is June 10, 2019, because 2019 is a common (non-leap) year.

Full-size DOI: [10.7717/peerj.12046/fig-3](https://doi.org/10.7717/peerj.12046/fig-3)

Table 3 Regression table of interrupted time-series analysis on weekly sex-, age- and comorbidity-standardized percentage of surgery for hip fracture in Piedmont and Emilia-Romagna in the 13 weeks before and after Italy's COVID-19 national lockdown.

Variable	Piedmont		Emilia-Romagna	
	Coefficient (95% CI)	P-value	Coefficient (95% CI)	P-value
<i>Surgery within 2 days</i>				
Intercept	72.36 (64.95, 79.77)	<0.001	72.73 (65.55, 79.91)	<0.001
T_t	-0.59 (-1.58, 0.40)	0.238	0.59 (-0.25, 1.43)	0.166
X_t	1.37 (-4.99, 7.72)	0.667	-4.39 (-11.21, 2.42)	0.201
$X_t T_t$	0.80 (-0.25, 1.86)	0.133	-0.78 (-1.80, 0.25)	0.133
Z	-6.84 (-16.14, 2.45)	0.145	-3.11 (-14.56, 8.34)	0.587
ZT_t	1.10 (-0.35, 2.56)	0.133	0.69 (-0.71, 2.09)	0.328
ZX_t	-8.53 (-21.31, 4.26)	0.186	-4.56 (-13.73, 4.60)	0.321
$ZX_t T_t$	-1.04 (-2.75, 0.67)	0.227	-1.79 (-3.37, -0.22)	0.027
<i>Surgery within 1 day</i>				
Intercept	46.62 (38.34, 54.90)	<0.001	42.23 (35.33, 49.13)	<0.001
T_t	-0.30 (-1.35, 0.74)	0.559	-0.08 (-0.93, 0.78)	0.858
X_t	-2.49 (-8.94, 3.96)	0.441	0.57 (-8.19, 9.33)	0.897
$X_t T_t$	0.68 (-0.42, 1.77)	0.220	0.15 (-1.02, 1.32)	0.795
Z	-6.24 (-16.29, 3.80)	0.217	-5.50 (-14.36, 3.35)	0.217
ZT_t	0.95 (-0.49, 2.39)	0.192	1.69 (0.58, 2.80)	0.004
ZX_t	0.28 (-15.01, 15.57)	0.971	0.66 (-11.20, 12.53)	0.911
$ZX_t T_t$	-1.40 (-3.34, 0.53)	0.151	-4.04 (-5.59, -2.49)	<0.001
<i>Surgery on the same day</i>				
Intercept	15.77 (11.47, 20.08)	<0.001	10.41 (6.73, 14.10)	<0.001
T_t	-0.51 (-1.03, 0.01)	0.053	-0.34 (-0.85, 0.17)	0.181
X_t	2.99 (0.01, 5.98)	0.050	1.27 (-3.22, 5.75)	0.572
$X_t T_t$	0.61 (0.05, 1.17)	0.032	0.50 (-0.08, 1.08)	0.088
Z	-4.08 (-9.17, 1.01)	0.113	-3.62 (-8.56, 1.33)	0.147
ZT_t	0.64 (0.01, 1.27)	0.048	0.93 (0.19, 1.67)	0.015
ZX_t	-5.80 (-11.37, -0.22)	0.042	0.30 (-7.51, 8.11)	0.938
$ZX_t T_t$	-0.57 (-1.37, 0.22)	0.154	-2.15 (-3.15, -1.16)	<0.001

Notes.

Data observed the year before (2018/19) are used for comparison. T_t is time since the start of the study (December 11), X_t is an indicator variable that equals 1 in the weeks 11 to 23 of the tropical year (March 11, 2020/March 12, 2019 to June 9, 2020/June 10, 2019), and Z is an indicator variable that equals 1 in the experimental time series (December 11, 2019 to June 9, 2020). The post-lockdown trend between March 11, 2020 and June 9, 2020 can be obtained as $\beta(T_t) + \beta(ZT_t) + \beta(X_t T_t) + \beta(ZX_t T_t)$.

Results were virtually unchanged after excluding secondary diagnoses of HF (Table S2 and Fig. S2).

DISCUSSION

This ITSA was designed to evaluate whether the quality of care received by HF patients changed after the imposition of the COVID-19 national lockdown on early March 2020. Our analysis was restricted to Piedmont and Emilia-Romagna, two large regions of northern Italy severely hit by the pandemic. By identifying similarities and differences in how the

two study regions faced this unprecedented crisis, helpful information can be provided for setting health priorities and identifying entry points for health-system improvement in case of future recurrences of the pandemic, in Italy as in other countries. Furthermore, to the best of our knowledge, there are no published studies that adopted a quasi-experimental design to discern any changes in the quality of HF care during the pandemic.

The most important result of our study is that the percentage of timely surgery for HF remained virtually unchanged in Piedmont after the imposition of the national lockdown, while the Emilia-Romagna system, although performing better than Piedmont before the pandemic, worsened sharply until reaching a proportion below 70% between May and June 2020. This remarkable finding requires an explanation that might be sought in the different capacity and capability of the two regional healthcare systems to respond to the emergency, as well as in the local timing of the epidemic onset.

We acknowledge that the ability to intervene in time on HF patients relies both on patients' clinical condition, such as comorbidities or clinical instability management (e.g., coagulation problems) ([Fantini et al., 2011](#)), and healthcare services' organization ([Fantini et al., 2011](#); [Lizaur-Utrilla et al., 2019](#); [Sheehan et al., 2017](#)). However, possible reasons for interregional differences should be attributed to organizational rather than clinical aspects of care; indeed, Piedmont and Emilia-Romagna have slightly different health systems. Like neighboring Lombardy, Piedmont has a hospital-focused system that struggled in the first months to catch up with SARS-CoV-2 infections, due to the lack of a strong primary care system, but that might have ensured high standards of care for non-COVID-19 patients requiring specialized acute settings ([Casula, Terlizzi & Toth, 2020](#)). Emilia-Romagna relies on a mixed healthcare system, with strong hospital facilities and a well-developed primary care network.

The pandemic hit Emilia-Romagna harder and earlier than Piedmont. Official data report that Piedmont surpassed Emilia-Romagna's hospital burden of COVID-19 on April 10, 2020, about one month after the imposition of the national lockdown, and that reached Emilia-Romagna in terms of cumulative incidence of COVID-19 on April 22, 2020, about 6 weeks after ([Fig. S1](#)) ([Gibertoni et al., 2021](#); [Gatto et al., 2020](#); [Rivieccio et al., 2020](#); [Italian Civil Protection Department, 2020](#)). This may suggest that Piedmont had more time than Emilia-Romagna to organize a proper response to the crisis.

Given these considerations, for the first time since data recording began, the percentage of timely HF surgery in Emilia-Romagna dropped off. This is most likely due to organizational issues related to the emergency, such as the management of testing procedures or the enhancement of the overall capacity of the healthcare facilities. The need for COVID-19 testing procedures before being admitted to the operating room (OR) is an organizational factor that may have increased waiting times. Similarly, waiting for preoperative cardiac tests and other laboratory results may have played a role in delaying surgery ([Lizaur-Utrilla et al., 2019](#)). A recent study describes how in Lombardy's hospitals, for instance, patients were isolated at admission and sent to a "filtering" ward until the result of nasopharyngeal swabs became available, with a mean response delay, at that time, of 12 to 24 h ([Andreatta et al., 2020](#)). However, our findings cannot be generalized to non-elderly populations and to conditions other than HF, given that a number of treatment pathways succeeded

to maintain high standards of care in Emilia-Romagna. For instance, although overall hospital admissions decreased in a way similar to those for HF, management and outcomes of patients hospitalized with acute myocardial infarction during the same period remained unchanged (*Campo et al., 2021*).

Another aspect to be considered is the workforce surge capacity of healthcare facilities during the pandemic. After the transfer of human resources to sustain intensive care units (ICUs), anesthesiologists may have been under pressure to divide their time between ICUs and ORs, orthopedic surgeons may have been underused or assigned to internal medicine activities in COVID-19 wards, and nurses may have had to adapt to different surgical procedures (*Andreata et al., 2020*). Furthermore, observing COVID-19-related safety protocols is a time-consuming activity that may have created further delays. As a matter of fact, this has an impact on ORs' capacity and readiness, increasing both the "first-case delay", which is an indicator of the delay from the scheduled time for skin incision on the first patient of the day, and the "turnover time", which is the time required for the exit of the patient from the OR, room cleaning, and the entrance of the next patient (*Andreata et al., 2020*).

All these critical aspects might be responsible for the delay in the treatment of patients with HF in Emilia-Romagna after the pandemic outbreak. This highlights the importance of pandemic preparedness and response plans that should include healthcare management issues to respond not only to patients directly affected by the pathogen but also to other patients needing healthcare assistance, such as those with HF or other acute and chronic diseases. These plans should incorporate, for instance, the implementation of specifically trained professionals' networks supported by "health crisis" guidelines to maintain high standards of care even in times of pandemic emergency. Regional healthcare systems should provide healthcare personnel with disaster medicine training courses and reckon on trained "reservists" to be called back in the case of need. Moreover, hospitals and healthcare facilities should schedule simulation trainings and stress tests to speed up peri-surgical activities to be prepared in the event of recurrent crises.

Our findings also show that HF hospital admissions declined in both regions during the first weeks of the lockdown, although the difference-in-differences of change of level was slightly more pronounced in Piedmont than in Emilia-Romagna. This coherent reduction in hospital admissions suggests that the overall impact of the pandemic was similar in the elderly HF populations of the two study regions. This decline has several possible explanations.

Due to the uncontrolled spread of the epidemic across the regions of northern Italy, the central government declared the national lockdown on March 9, 2020. Lifestyle changes, fear of the contagion and sense of civic responsibility (*Rosenbaum, 2020*) may have determined an overall reduction in the number of patients accessing emergency departments (EDs) and hospitals, as confirmed by previous research conducted in Italy and other countries (*Jeffery et al., 2020*; *Santi et al., 2020*). Moreover, by confining people at home, interrupting work activities and reducing road traffic, the frequency of travel- and work-related injuries dropped (*Dolci et al., 2020*); as a consequence, ED visits and hospitalizations for trauma have decreased. Some authors report that domestic accidents

had a relative increase of 94% on total accesses to trauma facilities ([Maniscalco et al., 2020](#)), determining an increase in the proportion of hospitalizations for HF in the age group ≥ 65 ([Nuñez et al., 2020](#); [Ogliari et al., 2020](#)) during the first wave of the pandemic. However, in Piedmont and Emilia-Romagna, despite the continued occurrence of domestic accidents, the reduction in overall mobility due to the lockdown led to a decline in the number of HFs and consequent hospitalizations.

Lastly, we found a relative increase in HF hospital admissions to third-level hospitals. We expect this to be the consequence of the reorganization of the healthcare services of both regions. HF and traumas activities were shifted to dedicated hubs, chosen at the regional level among those with more experience and treatment capacity/volumes, in order to maintain high-performance levels even under stressful situations ([Placella et al., 2020](#); [Dolci et al., 2020](#); [Grassi et al., 2020](#)). These decisions were made to ensure a rapid increase in the number of ICUs, allowing recruitment as well as replacement for healthcare workers to better assist COVID-19 patients.

Strengths and limitations

The results of this study should be interpreted considering its strengths and limitations. ITSA is a quasi-experimental research design with a potentially high degree of internal validity, and the addition of a control group (*i.e.*, 2018/19 data) strengthens the causal inference that can be drawn from its results ([Bärnighausen et al., 2017](#)). By standardizing rates, we also accounted for individual-level confounding differences to evaluate the outcomes of interest at the population level, but ITSA does not allow inferences about the patients that make up the experimental and control cohorts; moreover, our estimates might be affected by some residual confounding due to the impossibility of obtaining relevant information such as patient frailty and clinical complexity from administrative databases. Another limitation to our study is that we did not have access to the hospital reorganization protocols of Piedmont and Emilia-Romagna, so we could not test which one of several potential factors played the leading role in determining our findings. Other limitations are common to all studies based on healthcare administrative data, including lack of accuracy and differences in the coding criteria over time as well as across individuals and institutions. However, there is no reason to believe that such potential source of information bias might have significantly affected our difference-in-differences estimates.

CONCLUSIONS

In this quasi-experimental study, we found that the COVID-19 pandemic had a similar impact on the HF hospitalization rates of Piedmont and Emilia-Romagna, two of the regions hit earliest and hardest by the virus in Europe, with a coherent relative reduction in HF-related hospitalizations. Conversely, the healthcare services response was different: Piedmont managed to maintain pre-pandemic standards of care, while Emilia-Romagna performed worse despite starting from a better performance level.

Our findings show to what extent the percentage of timely surgery for HF was modified by the pandemic, reflecting local differences in terms of healthcare management, emergency preparedness and response factors. Although there is urgent need for timely and effective

management of COVID-19 patients, it is essential not to forget about other acute and chronic diseases, such as HFAs. This draws attention to the enhancement of health services' capacity during emergencies, focusing on the prevention of collateral damage to patients with other diseases, which should be an integral part of any preparedness and response plan aiming to tackle health crises.

ADDITIONAL INFORMATION AND DECLARATIONS

Funding

The authors received no funding for this work.

Competing Interests

The authors declare there are no competing interests.

Author Contributions

- Davide Golinelli conceived and designed the experiments, prepared figures and/or tables, and approved the final draft, developed the concept for this study, contributed to the interpretation of the results, and wrote the first draft.
- Jacopo Lenzi conceived and designed the experiments, performed the experiments, analyzed the data, prepared figures and/or tables, and approved the final draft, conducted data analysis, contributed to the interpretation of the results, and wrote the first draft.
- Emanuele Adorno conceived and designed the experiments, analyzed the data, authored or reviewed drafts of the paper, and approved the final draft, contributed to the interpretation of the results, drafted sections of the paper and revised it critically for important intellectual content.
- Maria Michela Gianino and Maria Pia Fantini conceived and designed the experiments, authored or reviewed drafts of the paper, and approved the final draft, contributed to the interpretation of the results, drafted sections of the paper and revised it critically for important intellectual content, equally contributed to this study and are both guarantor for this work.

Ethics

The following information was supplied relating to ethical approvals (i.e., approving body and any reference numbers):

Ethical approval to undertake this research was granted from the Comitato Etico di Area Vasta Emilia Centro (Submission Number IDECOdE-R (233/2019/0SS/AOUBo)).

Data Availability

The following information was supplied regarding data availability:

We upload:

- + Supporting data
- + Stata script to perform interrupted time-series analysis.

Supplemental Information

Supplemental information for this article can be found online at <http://dx.doi.org/10.7717/peerj.12046#supplemental-information>.

REFERENCES

- Andreato M, Faraldi M, Bucci E, Lombardi G, Zagra L. 2020.** Operating room efficiency and timing during coronavirus disease 2019 outbreak in a referral orthopaedic hospital in Northern Italy. *International Orthopaedics* **44**:2499–2504 DOI [10.1007/s00264-020-04772-x](https://doi.org/10.1007/s00264-020-04772-x).
- Bärnighausen T, Tugwell P, Röttingen JA, Shemilt I, Rockers P, Geldsetzer P, Lavis J, Grimshaw J, Daniels K, Brown A, Bor J, Tanner J, Rashidian A, Barreto M, Vollmer S, Atun R. 2017.** Quasi-experimental study designs series—paper 4: uses and value. *Journal of Clinical Epidemiology* **89**:21–29 DOI [10.1016/j.jclinepi.2017.03.012](https://doi.org/10.1016/j.jclinepi.2017.03.012).
- Beaupre LA, Khong H, Smith C, Kang S, Evens L, Jaiswal PK, Powell JN. 2019.** The impact of time to surgery after hip fracture on mortality at 30- and 90-days: Does a single benchmark apply to all? *Injury* **50**:950–955 DOI [10.1016/j.injury.2019.03.031](https://doi.org/10.1016/j.injury.2019.03.031).
- Bhandari M, Swiontkowski M. 2017.** Management of acute hip fracture. *The New England Journal of Medicine* **377**:2053–2062 DOI [10.1056/NEJMc1611090](https://doi.org/10.1056/NEJMc1611090).
- Braithwaite RS, Col NF, Wong JB. 2003.** Estimating hip fracture morbidity, mortality and costs. *Journal of the American Geriatrics Society* **51**:364–370 DOI [10.1046/j.1532-5415.2003.51110.x](https://doi.org/10.1046/j.1532-5415.2003.51110.x).
- Campo G, Fortuna D, Berti E, DePalma R, DiPasquale G, Galvani M, Navazio A, Piovaccari G, Andrea Rubboli A, Gabriele Guardigli G, Nazzareno Galie` N, Giuseppe Boriani G, Stefano Tondi S, Ardissino D, Piepoli M, Banchelli F, Santarelli A. 2021.** In- and out-of-hospital mortality for myocardial infarction during the first wave of the COVID-19 pandemic in Emilia-Romagna, Italy: a population-based observational study. *The Lancet Regional Health - Europe* **3**:100055 DOI [10.1016/j.lanep.2021.100055](https://doi.org/10.1016/j.lanep.2021.100055).
- Carretta E, Bochicchio V, Rucci P, Fabbri G, Laus M, Fantini MP. 2011.** Hip fracture: effectiveness of early surgery to prevent 30-day mortality. *International Orthopaedics* **35**:419–424 DOI [10.1007/s00264-010-1004-x](https://doi.org/10.1007/s00264-010-1004-x).
- Casula M, Terlizzi A, Toth F. 2020.** I servizi sanitari regionali alla prova del COVID-19. *Rivista Italiana di Politiche Pubbliche* **XV**:307–336 DOI [10.1483/98732](https://doi.org/10.1483/98732).
- Cumby RE, Huizinga J. 1992.** Testing the autocorrelation structure of disturbances in ordinary least squares and instrumental variables regressions. *Econometrica* **60**:185–195 DOI [10.2307/2951684](https://doi.org/10.2307/2951684).
- Dolci A, Marongiu G, Leinardi L, Lombardo M, Dessì G, Capone A. 2020.** The epidemiology of fractures and musculo-skeletal traumas during COVID-19 lockdown: a detailed survey of 17.591 patients in a wide Italian metropolitan area. *Geriatric Orthopaedic Surgery & Rehabilitation* **11**:2151459320972673 DOI [10.1177/2151459320972673](https://doi.org/10.1177/2151459320972673).

- Fantini MP, Fabbri G, Laus M, Carretta E, Mimmi S, Franchino G, Favero L, Rucci P. 2011.** Determinants of surgical delay for hip fracture. *Surgeon* 9:130–134 DOI 10.1016/j.surge.2010.11.031.
- Gatto M, Bertuzzo E, Mari L, Miccoli S, Carraro L, Casagrandi R, Rinaldo A. 2020.** Spread and dynamics of the COVID-19 epidemic in Italy: effects of emergency containment measures. *Proceedings of the National Academy of Sciences of the United States of America* 117:10484–10491 DOI 10.1073/pnas.2004978117.
- Gibertoni D, Adja KYC, Golinelli D, Reno C, Regazzi L, Lenzi J, Sanmarchi F, Fantini MP. 2021.** Patterns of COVID-19 related excess mortality in the municipalities of Northern Italy during the first wave of the pandemic. *Health Place* 67:102508 DOI 10.1016/j.healthplace.2021.102508.
- Golinelli D, Toscano F, Bucci A, Lenzi J, Fantini MP, Nante N, Messina G. 2017.** Health expenditure and all-cause mortality in the ‘Galaxy’ of Italian regional healthcare systems: a 15-Year panel data analysis. *Applied Health Economics and Health Policy* 15:773–783 DOI 10.1007/s40258-017-0342-x.
- Grassi A, Pizza N, Tedesco D, Zaffagnini S. 2020.** The COVID-19 outbreak in Italy: perspectives from an orthopaedic hospital. *International Orthopaedics* 44:1543–1547 DOI 10.1007/s00264-020-04617-7.
- Haentjens P, Magaziner J, Colón-Emeric CS, Vanderschueren D, Milisen K, Velkeniers B, Boonen S. 2010.** Meta-analysis: excess mortality after hip fracture among older women and men. *Annals of Internal Medicine* 152:380–390 DOI 10.7326/0003-4819-152-6-201003160-00008.
- Hansen L, Mathiesen AS, Vestergaard P, Ehlers LH, Petersen KD. 2013.** A health economic analysis of osteoporotic fractures: who carries the burden? *Archives of Osteoporosis* 8:126 DOI 10.1007/s11657-013-0126-3.
- National Institute for Health and Care Excellence (NICE). 2017.** The management of hip fracture in adults. *National Clinical Guideline Centre* 1–628.
- Italian Civil Protection Department. 2020.** Official Italian data about COVID-19. In: Online. Available at <https://github.com/pcm-dpc/COVID-19> (accessed on 28 February 2021).
- Jeffery MM, D’Onofrio G, Paek H, Platts-Mills TF, Soares 3rd WE, Hoppe JA, Genes N, Nath B, Melnick ER. 2020.** Trends in emergency department visits and hospital admissions in health care systems in 5 states in the first months of the COVID-19 pandemic in the US. *JAMA Internal Medicine* 180:1328 DOI 10.1001/jamainternmed.2020.3288.
- Lavezzo E, Franchin E, Ciavarella C, Cuomo-Dannenburg G, Barzon L, Del Vecchio C, Rossi L, Manganelli R, Loregian A, Navarin N, Abate D, Sciro M, Merigliano S, DeCanale E, Vanuzzo MC, Besutti V, Saluzzo F, Onelia F, Pacenti M, Parisi SG, Carretta G, Donato D, Flor L, Cocchio S, Masi G, Sperduti A, Cattarino L, Salvador R, Nicoletti M, Caldart F, Castelli G, Nieddu E, Labella B, Fava L, Drigo M, Gaythorpe KAM. 2020.** Suppression of a SARS-CoV-2 outbreak in the Italian municipality of Vo’. *Nature* 584:425–429 DOI 10.1038/s41586-020-2488-1.

- Lenzi J, Luciano L, McDonald KM, Rosa S, Damiani G, Corsello G, Fantini MP. 2014.** Empirical examination of the indicator ‘pediatric gastroenteritis hospitalization rate’ based on administrative hospital data in Italy. *Italian Journal of Pediatrics* **40**:14 DOI [10.1186/1824-7288-40-14](https://doi.org/10.1186/1824-7288-40-14).
- Linden A. 2015.** Conducting interrupted time-series analysis for single- and multiple-group comparisons. *The Stata Journal* **15**:480–500 DOI [10.1177/1536867X1501500208](https://doi.org/10.1177/1536867X1501500208).
- Linden A, Adams JL. 2011.** Applying a propensity score-based weighting model to interrupted time series data: improving causal inference in programme evaluation. *Journal of Evaluation in Clinical Practice* **17**:1231–1238 DOI [10.1111/j.1365-2753.2010.01504.x](https://doi.org/10.1111/j.1365-2753.2010.01504.x).
- Lizaur-Utrilla A, Gonzalez-Navarro B, Vizcaya-Moreno MF, Miralles Muñoz FA, Gonzalez-Parreño S, Lopez-Prats FA. 2019.** Reasons for delaying surgery following hip fractures and its impact on one year mortality. *Int Orthop* **43**:441–448 DOI [10.1007/s00264-018-3936-5](https://doi.org/10.1007/s00264-018-3936-5).
- Maniscalco P, Poggiali E, Quattrini F, Ciatti C, Magnacavallo A, Vercelli A, Domenichini M, Vaienti E, Pogliacomini F, Ceccarelli F. 2020.** Proximal femur fractures in covid-19 emergency: the experience of two orthopedics and traumatology departments in the first eight weeks of the Italian epidemic. *Acta Biomed* **91**:89–96 DOI [10.23750/abm.v91i2.9636](https://doi.org/10.23750/abm.v91i2.9636).
- Moja L, Piatti A, Pecoraro V, Ricci C, Virgili G, Salanti G, Germagnoli L, Liberati A, Banfi G. 2012.** Timing matters in hip fracture surgery: patients operated within 48 hours have better outcomes. A meta-analysis and meta-regression of over 190, 000 patients. *PLOS ONE* **7**:e46175 DOI [10.1371/journal.pone.0046175](https://doi.org/10.1371/journal.pone.0046175).
- Nuñez JH, Sallent A, Lakhani K, Guerra-Farfan E, Vidal N, Ekhtiari S, Minguell J. 2020.** Impact of the COVID-19 pandemic on an emergency traumatology service: experience at a tertiary trauma centre in Spain. *Injury* **51**:1414–1418 DOI [10.1016/j.injury.2020.05.016](https://doi.org/10.1016/j.injury.2020.05.016).
- OECD/European Union. 2020.** *Health at a Glance: Europe 2020*. OECD.
- Ogliari G, Lunt E, Ong T, Marshall L, Sahota O. 2020.** The impact of lockdown during the COVID-19 pandemic on osteoporotic fragility fractures: an observational study. *Arch Osteoporos* **15**:156 DOI [10.1007/s11657-020-00825-1](https://doi.org/10.1007/s11657-020-00825-1).
- Placella G, Salvato D, Delmastro E, Bettinelli G, Salini V. 2020.** CoViD-19 and ortho and trauma surgery: The Italian experience. *Injury* **51**:1403–1405 DOI [10.1016/j.injury.2020.04.012](https://doi.org/10.1016/j.injury.2020.04.012).
- Quan H, Sundararajan V, Halfon P, Fong A, Burn B, Luthi JC, Saunders LD, Beck CA, Feasby TE, Ghali WA. 2005.** Coding algorithms for defining comorbidities in ICD-9-CM and ICD-10 administrative data. *Med Care* **43**:1130–1139 DOI [10.1097/01.mlr.0000182534.19832.83](https://doi.org/10.1097/01.mlr.0000182534.19832.83).
- Rivieccio BA, Luconi E, Boracchi P, Pariani E, Romanò L, Salini S, Castaldi S, Biganzoli E, Galli M. 2020.** Heterogeneity of covid-19 outbreak in Italy. *Acta Biomed* **91**:31–34 DOI [10.23750/abm.v91i2.9579](https://doi.org/10.23750/abm.v91i2.9579).

- Rosenbaum L. 2020.** The Untold Toll —The Pandemic’s Effects on Patients without Covid-19. *N Engl J Med* **382**:2368–2371 DOI [10.1056/NEJMms2009984](https://doi.org/10.1056/NEJMms2009984).
- Ministero della Salute Agenas. 2019.** *Programma Nazionale Esiti –PNE Edizione 2019..*
- Sambrook P, Cooper C. 2006.** Osteoporosis. *Lancet* **367**:2010–2018 DOI [10.1016/S0140-6736\(06\)68891-0](https://doi.org/10.1016/S0140-6736(06)68891-0).
- Santi L, Golinelli D, Tampieri A, Farina G, Greco M, Rosa S, Beleffi M, Biavati B, Campinoti F, Guerrini S, Ferrari R, Rucci P, Fantini MP, Giostra F. 2020.** Non-COVID-19 patients in times of pandemic: Decreased emergency department visits and increased out-of-hospital mortality in Northern Italy. *medRxiv*. ArXiv preprint. [arXiv:2020.11.10.20229237](https://arxiv.org/abs/2020.11.10.20229237).
- Shadish WR, Cook TD, Campbell DT. 2002.** Quasi-experiments: interrupted time-series designs. In: *Experimental and quasi-experimental designs for generalized causal inference*. Boston, USA: Houghton Mifflin Company, 171–206.
- Sheehan KJ, Sobolev B, Villán Villán YF, Guy P. 2017.** Patient and system factors of time to surgery after hip fracture: a scoping review. *BMJ Open* **7**:e016939 DOI [10.1136/bmjopen-2017-016939](https://doi.org/10.1136/bmjopen-2017-016939).
- Shiga T, Wajima Z, Ohe Y. 2008.** Is operative delay associated with increased mortality of hip fracture patients? Systematic review, meta-analysis, and meta-regression. *Canadian Journal of Anesthesia* **55**:146–154 DOI [10.1007/BF03016088](https://doi.org/10.1007/BF03016088).
- Society of Orthopaedics and Traumatology (SIOT). 2021.** *Linee Guida - Fratture del Femore Proximale nell’Anziano*. Rome, Italy: Società Italiana di Ortopedia e Traumatologia.
- Svedbom A, Hernlund E, Ivergård M, Compston J, Cooper C, Stenmark J, McCloskey EV, Jönsson B, Kanis JA, EU Review Panel of IOF. 2013.** Osteoporosis in the European Union: a compendium of country-specific reports. *Arch Osteoporos* **8**:137 DOI [10.1007/s11657-013-0137-0](https://doi.org/10.1007/s11657-013-0137-0).
- Tedesco D, Gibertoni D, Rucci P, Hernandez-Boussard T, Rosa S, Bianciardi L, Rolli M, Fantini MP. 2018.** Impact of rehabilitation on mortality and readmissions after surgery for hip fracture. *BMC Health Services Research* **18**:701 DOI [10.1186/s12913-018-3523-x](https://doi.org/10.1186/s12913-018-3523-x).
- Emilia Romagna Region Directorate General Personal Care, Health and Welfare. 2020.** *Piano di riorganizzazione per i ricoveri in regime di terapia intensiva e in aree di assistenza ad alta intensità di cura*. Available at <https://bur.regione.emilia-romagna.it/bur/area-bollettini/bollettini-in-lavorazione/n-220-del-26-06-2020-parte-seconda.2020-06-26.5805590125/emergenza-pandemica-covid-19-disposizioni-in-ordine-al-piano-di-riorganizzazione-dellassistenza-ospedaliera-di-cui-allart-2-del-d-l-19-maggio-2020-n-34/allegato-dgr-piano-riorganizza.2020-06-26.1593156609>.
- Williams GA, Maier CB, Scarpetti G, DeBelvis AG, Fattore G, Morsella A, Pastorino G, Poscia A, Ricciardi W, Silenzi A. 2020.** What strategies are countries using to expand health workforce surge capacity during the Covid-19 pandemic? *TEN* **26**:51.