



RESEARCH

Open Access

Meta-analysis of postoperative efficacy in patients receiving chemoradiotherapy followed by surgery for resectable esophageal carcinoma

Jiaying Deng^{1†}, Chunyu Wang^{1†}, Mingqiong Xiang², Fatao Liu³, Yun Liu^{4*} and Kuaile Zhao^{1*}

Abstract

Background: Many studies have demonstrated that chemoradiotherapy followed by surgery (CRTS) prolongs the 5-year survival rate of resectable esophageal carcinoma patients. However, the effect of CRTS on postoperative complications, local recurrence and distant metastasis remains controversial. We performed a systematic review of the literature and conducted a meta-analysis to assess the postoperative efficacy of CRTS compared with surgery alone (SA).

Methods: Pubmed, Web of Science and the Cochrane library Databases were used to identify published studies between 2000 and 2013 that directly compared CRTS with SA. The pooled relative risk (RR) and its corresponding 95% confidence interval (95% CI) constituted the principal measure of treatment effects. Heterogeneity was assessed by the χ^2 and I^2 statistic.

Results: The final analysis included 1930 resectable esophageal carcinoma cases from 13 randomized controlled trials (RCTs). Compared with SA, CRTS was associated with significantly decreased postoperative mortality, local recurrence and distant metastasis rates, with RR (95% CI) = 0.64 (0.49–0.84), 0.53 (0.39–0.73), 0.82 (0.68–0.98); $p = 0.001$, <0.00001 , $=0.03$, respectively. However, there was no significant difference in postoperative complication incidence between the two groups (RR, 1.09; 95% CI, 0.96–1.24; $p = 0.18$).

Conclusions: CRTS significantly decreased postoperative mortality, local recurrence and distant metastasis rates compared to SA. Additionally, there were no increased postoperative complications for patients with resectable esophageal carcinoma.

Virtual Slides: The virtual slide(s) for this article can be found here: <http://www.diagnosticpathology.diagnomx.eu/vs/1531519216130950>

Keywords: Esophageal carcinoma, Chemoradiotherapy followed by surgery, Surgery alone, Randomized controlled trial, Meta-analysis

Background

Esophageal cancer is a significant health problem worldwide. There are approximately 482,300 new cases of esophageal cancer and 406,800 deaths annually [1]. Esophagectomy is considered the gold standard treatment for patients with resectable esophageal carcinoma.

However, the prognosis for patients treated with surgery alone (SA) remains poor [2]. In addition to advances in supportive care, improved and standardized surgical techniques have also contributed to an increase in the rate of curative resection [3]. Despite changes in management over the past 20 years, SA leads to relatively few long-term survivors [4]. Thus, there is interest in using combinations of chemoradiotherapy and local surgical treatment due to the high rates of locoregional and distant failure. Many studies have investigated the effect of chemoradiotherapy followed by surgery (CRTS) on the postoperative survival rate and quality of life.

* Correspondence: superliuyun@gmail.com; kuaile_z@sina.com

[†]Equal contributors

⁴Institutes of Biomedical Sciences, Fudan University, Ming Dao Building, 138 Yi Xue Yuan Road, Shanghai 200032, China

¹Department of Radiation Oncology, Fudan University Shanghai Cancer Center, 270 Dongan Road, Shanghai 200032, China

Full list of author information is available at the end of the article

There is evidence that neoadjuvant chemoradiotherapy increases the rate of complete resection [5], particularly for patients with locally advanced disease. Many randomized controlled trials (RCTs) have generated promising results with respect to 5-year survival rates. The evidence supporting the survival benefits of CRTS is clear for both esophageal squamous-cell carcinoma (SCC) and adenocarcinoma (AC) histology compared with SA. Clinicians agree there is a survival advantage associated with the CRTS regimen. However, there are different opinions on the impact of postoperative treatment effects [6,7]. There is a persistent concern that neoadjuvant treatment may cause an undesirable increase in postoperative complications.

The published meta-analyses have also failed to reach a consensus on postoperative efficacy [8-10]. Therefore, we performed a meta-analysis of prospective RCTs to examine resectable esophageal carcinoma patients treated with CRTS or SA. We compared the postoperative complications, local recurrence and distant metastasis associated with the two treatment regimens. The results of this study provide valuable evidence for clinical decision-making.

Methods

Identification of relevant studies

We searched PubMed, Web of Science and the Cochrane library databases to retrieve related studies published between 2000 and 2013. The search terms included “neoadjuvant therapy”, “chemoradiotherapy followed by surgery”, “chemoradiotherapy”, “surgery or operation or esophagectomy”, “esophagus or esophageal cancer or carcinoma”. To Manual searches of reference lists were also performed to ensure that no studies were missed.

Inclusion criteria

The search results met the following inclusion criteria:(1) the study was a prospective RCT designed to compare CRTS with SA treatment of resectable esophageal cancer; (2) the assessment of the liver, kidney, heart, lung, etc. for the included patients have confirmed them to be fit for surgery; (3) the study clearly described the diagnoses and the sources of the cases and controls, the sample size, risk ratio (*RR*) and their 95% confidence interval (*CI*), or data that would allow those findings to be inferred; (4) clear follow-up censored survival, complications, number of cases for local recurrence and metastasis, and follow-up rate of > 95% in the original study.

Data extraction and quality assessment

Two investigators (Deng, Wang) independently reviewed titles and abstracts of all citations identified by the literature search. The data were extracted by the one author. Any discrepancies were resolved by discussion among all authors, and consensus was reached. For each study, the following data were extracted: the first author of the

study, the year of publication, the author's country, the treatment regimen, tumor histology, patient outcomes including postoperative mortality, complications, recurrence and distant metastasis.

The trial validity assessment was conducted in dependently and in duplicate. A trial quality score was assigned using three aspects: blinding, randomization and handling of withdrawals and dropouts. These aspects were assessed using a scale of 1–5, according to methods previously described by Jadad et al [11].

Statistical analysis

The analysis was performed using Review Manager Version 5.2 software and Stata Version 12.0 software. To combine results from individual trials, we used the proportion of events observed in CRTS and SA groups. The *RR* with the corresponding 95% *CI* was calculated for each trial using the observed proportions of events. All patient data were analyzed according to intention-to-treat principles. The overall *RR* was tested for significance using a Mantel-Haenszel χ^2 test. The outcome variables were the treatment *RR* of the postoperative mortality, complications, local recurrence and distant metastasis rates between CRTS and SA groups. The statistical significance of the summary *RR* was determined with a *Z*-test, and $p < 0.05$ was considered statistically significant. Subgroups of patients were assigned based on ethnicity and histology, and the groups were used to compare the impact on postoperative treatment outcomes.

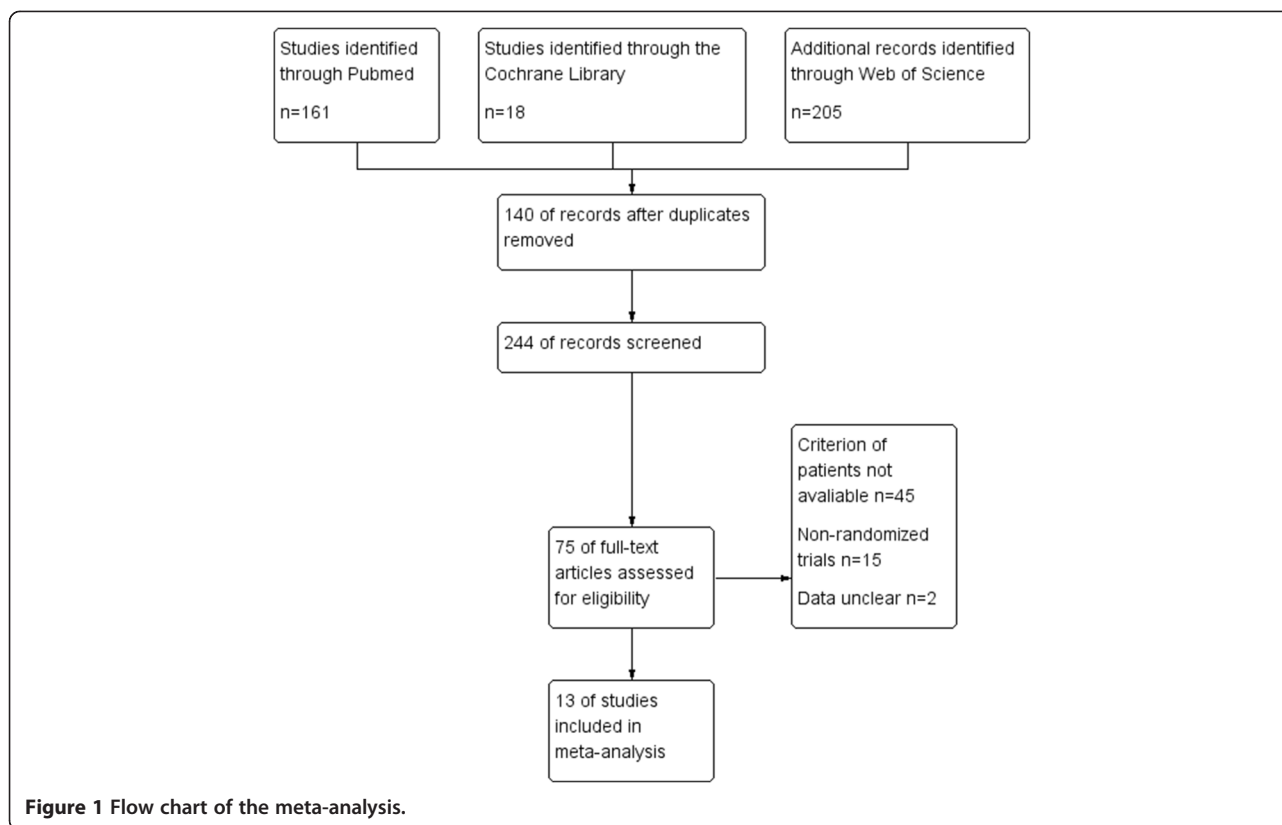
Evaluation of heterogeneity and publication bias

The heterogeneity assumption was evaluated with a chisquare-based *Q*-test. A p value ≥ 0.10 for the *Q*-test indicated a lack of heterogeneity among studies. We used a fixed effects model to calculate the total *RR* and 95% *CI*, or used a random effects model. If $p < 0.1$ and $I^2 > 50\%$, the heterogeneity was regarded as statistically significant. Egger's test was performed to assess whether there was any publication bias due to the literature evaluated.

Results

Characteristics of eligible studies

We initially identified 384 relevant studies in the literature: 75 preliminary studies were included after reading the title and study summary, and 62 studies excluded after reading the full text (45 did not meet the standard of enrolled patients, 15 non-randomized controlled trials, 2 unpublished full-text articles). Thus, there were 13 RCTs that meet our inclusion criteria [12-24]. The flow chart of the meta-analysis is shown in Figure 1. There were a total of 1930 patients within these 13 RCTs. There were 970 patients in the CRTS group and 960 patients treated with SA. The selected study characteristics are summarized in Table 1.



Mortality and complications after surgery

The number of actual surgeries was analyzed. There was a statistically significant difference in the postoperative mortality of patients treated with CRTS compared to SA; the *RR* (95% *CI*) = 0.64 (0.49–0.84), $p = 0.001$. However, there was no statistical significance detected in postoperative complications; *RR* (95% *CI*) = 1.09 (0.96–1.24), $p = 0.18$. All the results of the statistical analysis are shown in Table 2. The forest plots are shown in Figure 2.

To examine the possible effect of ethnicity on postoperative mortality and complications, we also conducted subgroup analyses to evaluate whether patients from the West (e.g., Europe, USA) or the East (e.g., Asia) had different treatment outcomes following CRTS or SA. This subgroup analysis showed that the participant's location had an impact on postoperative mortality for CRTS relative to SA. The *RR* for postoperative mortality was 0.56 (95% *CI* = 0.42–0.75, $p < 0.0001$) for the East and 0.83 (95% *CI* = 0.47–1.46, $p = 0.52$) for the West. However, the *RR* for postoperative complications was 1.23 (95% *CI* = 0.96–1.56, $p = 0.10$) for the East and 1 (95% *CI* = 0.87–1.15, $p = 0.98$) for the West. These values were not significantly increased by CRTS (Table 3).

A subgroup analysis by histological type for postoperative mortality where histology data were available yielded

an *RR* for SCC of 0.54 (95% *CI* 0.42–0.68; $p < 0.0001$), in favor of CRTS. For AC, the *RR* was 1.26 (0.76–2.06; $p = 0.37$). There was a significant survival benefit for SCC, but not for AC (Table 3).

Effect on recurrence and metastasis

Eight RCTs provided related data on tumor recurrence and metastasis. The patients treated with CRTS had markedly lower incidences of local recurrence (*RR*: 0.53, 95% *CI*: (0.39–0.73), $p < 0.00001$) and distant metastases (*RR*: 0.82, 95% *CI*: (0.68–0.98), $p = 0.03$) (Figure 3).

A subgroup analysis based on ethnicity showed that race had an impact on postoperative local recurrence and distant metastasis for CRTS relative to SA. The *RR* for postoperative local recurrence was 0.52 (95% *CI* = 0.33–0.84, $p = 0.008$) for the East and 0.51 (95% *CI* = 0.34–0.76, $p = 0.001$) for the West. The *RR* for distant metastasis for the East was 0.62 (95% *CI* = 0.44–0.88, $p = 0.007$), which was significantly increased by CRTS. However, the *RR* for the West was 0.93 (95% *CI* = 0.75–1.16, $p = 0.10$), which was not significantly increased by CRTS (Table 3).

Sensitivity analysis and publication bias

The sensitivity analysis did not exclude any studies because none of the studies could alter the overall

Table 1 Characteristics of 13 RCTs included in the final meta-analysis

First author	Year	Country	Sample size		Pathology	Neoadjuvant treatment schedule	Jadad score
			CRTS	SA			
Urba [12]	2001	USA	50	50	SCC (25%); AC (75%)	45 Gy; 1.5 Gy per fraction over 3 weeks Two cycles: cisplatin 20 mg/m ² days 1–5; fluorouracil 300 mg/m ² days 1–21; vinblastine 1 mg/m ² days 1–4	2
An [13]	2003	China	48	49	SCC	36 Gy, 1.2 Gy per fraction over 17 days First cycle: 5-fluorouracil 1 mg/m ² , 5–6 hours, days 1–5; cisplatin 25 mg/m ² . Second cycle: 5-fluorouracil 0.5 g/m ² , days 21–25; cisplatin 25 mg/m ² , days 22–25	3
Lee [14]	2004	Korea	51	50	SCC	45.6 Gy, 1.2 Gy per fraction over 28 day Two cycles: cisplatin 60 mg/m ² days 1; fluorouracil 1000 mg/m ² days 3–5	2
Burmeister [15]	2005	Australia	128	128	SCC (37%); AC (62%)	35 Gy in 15 fractions over 3 weeks One cycles: cisplatin 80 mg/m ² days 1; fluorouracil 800 mg/m ² days 1–4	3
Natsugoe [16]	2006	Japan	22	23	SCC	40 Gy, 2 Gy per fraction over 4 weeks cisplatin 7 mg over 2 hours; 5-fluorouracil 350 mg over 24 hours	2
Tepper [17]	2008	USA	30	26	SCC (25%); AC (75%)	50.4 Gy, 1.8 Gy per fraction over 5.6 weeks Two cycles: cisplatin 100 mg/m ² days 1; fluorouracil 1000 mg/m ² per day days 1–4	3
Cao [18]	2009	China	118	118	SCC	40 Gy, 2 Gy per fraction over 4 weeks cisplatin 20 mg/m ² per day days 1–5; fluorouracil 500 mg/m ² per day days 1–5; mitomycin 10 mg/m ² per day day 1	2
Hurmuzlu [19]	2010	Norway	62	45	SCC (36%); AC (64%)	66 Gy, 2 Gy per fraction over 6.5 weeks Three cycles: cisplatin 100 mg/m ² days 1; fluorouracil 1000 mg/m ² per day days 1–5	3
Lv [20]	2010	China	80	80	SCC	40 Gy, 2 Gy per fraction over 4 weeks Two cycles: cisplatin 20 mg/m ² per day, days 1–3, 22–25; paclitaxel 135 mg/m ²	2
Saeki [24]	2011	Japan	76	92	SCC	30-42 Gy , 1.8 Gy per fraction cisplatin: 5 mg/m ² /day, 5-FU: 250 mg/m ² /day, administered on weekdays, repeated every 3-4 weeks	3
van Hagen [21]	2012	Netherlands	168	186	SCC (23%); AC (75%)	41.4 Gy, 1.8 Gy per fraction over 4.6 weeks 5 weeks chemotherapy: carboplatin area under curve =2 , paclitaxel 50 mg/m ² on day 1 weekly	2
Fujiwara [22]	2013	Japan	52	36	SCC	40 Gy, 2 Gy per fraction over 4 weeks 5-FU (500 mg/m ² /day), CDDP (15-20 mg/day), days 1-5, repeated every 3 weeks	3
Smit [23]	2013	Italy	75	75	SCC	41.4 Gy, 1.8 Gy per fraction over 4.6 weeks 5 weeks: paclitaxel (50 mg/m ²), carboplatin (area under the curve = 2)	3

CRTS: chemoradiotherapy followed by surgery SA: surgery alone SCC: squamous cell carcinoma AC: adenocarcinoma.

estimates for postoperative mortality, postoperative complications, postoperative local recurrence and postoperative distant metastasis. The Q-test of heterogeneity

showed that these analyses had a $p \geq 0.10$ (Table 2), which suggests that neither analyses demonstrated heterogeneity among the included RCTs. We then selected

Table 2 Meta-analysis for the outcomes of CRTS versus SA

Outcomes	Included studies	Sample size			Analysis model	Test for overall effect		P value for heterogeneity	P value for Egger's test
		CRTS	SA	F		RR (95% CI)	P		
Postoperative mortality	7	492	545	F	0.64 [0.49, 0.84]	0.001	0.83	0.040	
Postoperative complication	10	586	641	F	1.09 [0.96, 1.24]	0.18	0.75	0.752	
Local recurrence	8	484	481	F	0.51 [0.38, 0.70]	<0.0001	0.32	0.386	
Postoperative metastasis	8	484	481	F	0.82 [0.68, 0.98]	0.03	0.25	0.016	

CRTS: chemoradiotherapy followed by surgery SA: surgery alone.

a fixed-effect model and did not introduce a subgroup analysis.

The p values based on Egger's test for postoperative mortality, complications, local recurrence and distant metastasis are shown in Table 2. The results showed that no publication bias existed for postoperative complications and local recurrence ($p = 0.752, 0.386$, respectively). However, publication bias existed for postoperative mortality and distant metastasis ($p = 0.04, 0.01$, respectively). Therefore, these results need to be further examined in additional studies.

Discussion

Previous studies have demonstrated that CRTS significantly improves the long-term survival rate of esophageal cancer compared with SA alone [25]. Consistent with this result,

many RCTs and Meta studies have reached a consensus. We emphasized the investigation of neoadjuvant chemoradiotherapy in the present meta-analysis due to persistent anxiety that neoadjuvant chemoradiotherapy has a negative impact on postoperative treatment effects.

The results of our meta-analysis showed there was a statistically significant advantage for postoperative mortality, local recurrence and distant metastasis of esophageal cancer patients treated with CRTS compared with SA ($p < 0.05$). This finding is interesting with respect to a recently updated meta-analysis performed by Sjoquist et al [10] published in *Lancet Oncology*. The study included 12 RCTs with 1854 cases and had strict inclusion criteria and rigorous statistical analysis. The HR for all-cause mortality for neoadjuvant chemoradiotherapy was 0.78 (95% CI 0.70-0.88; $p < 0.0001$). The updated meta-analysis

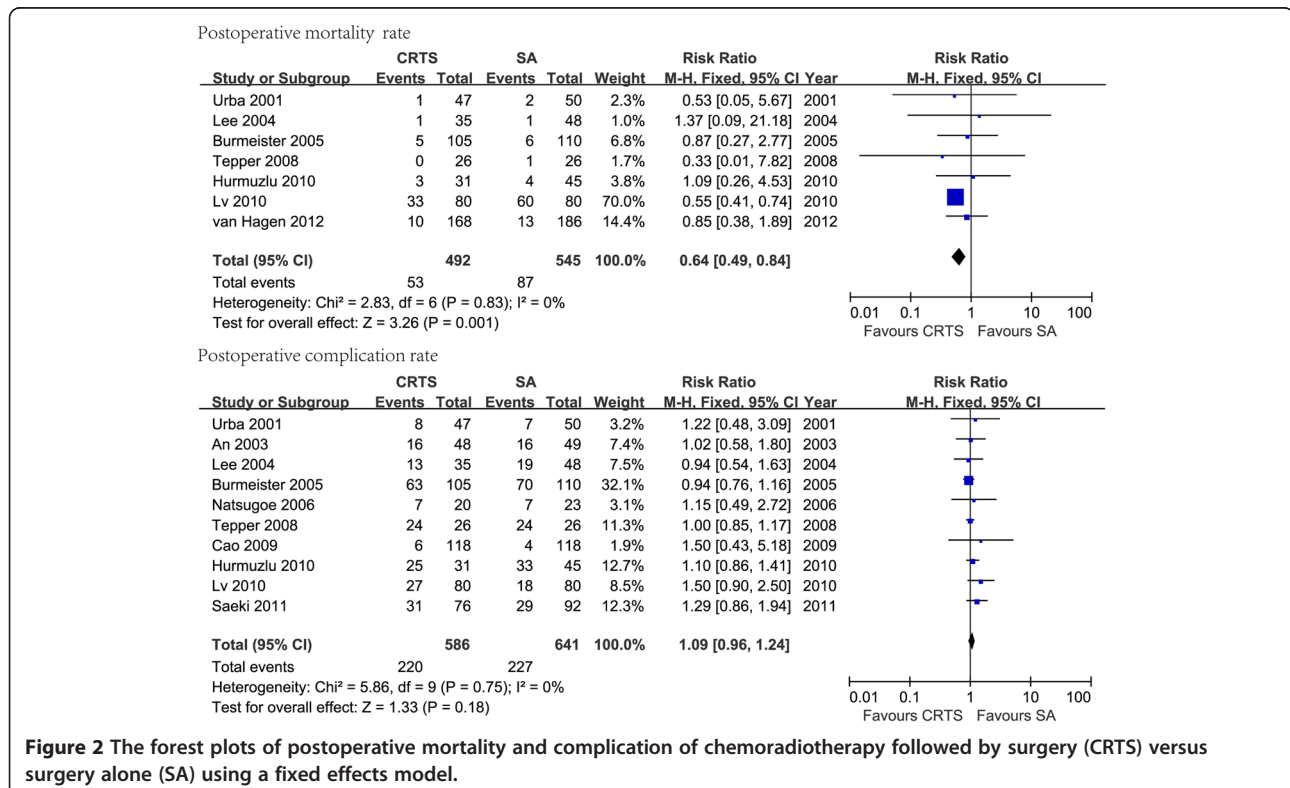


Figure 2 The forest plots of postoperative mortality and complication of chemoradiotherapy followed by surgery (CRTS) versus surgery alone (SA) using a fixed effects model.

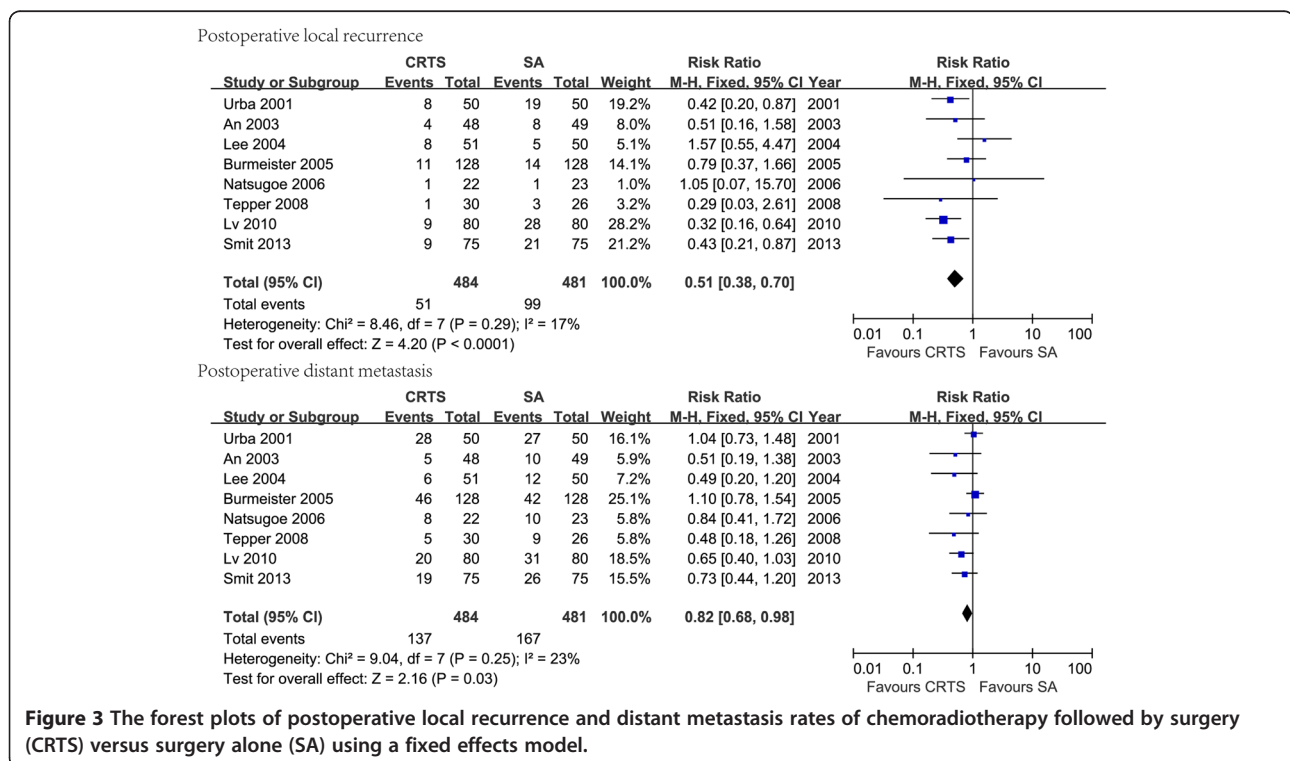
Table 3 Subgroup analysis of the postoperative treatment outcomes

Subgroup	Category	Included studies	Sample size		Test for overall effect	
			CRTS	SA	RR (95% CI)	P
Postoperative mortality based on ethnicity	The West	5	377	417	0.83 [0.47, 1.46]	0.52
	The East	2	115	128	0.56 [0.42, 0.75]	<0.0001
Postoperative complication based on ethnicity	The West	4	209	231	1.00 [0.87, 1.15]	0.98
	The East	5	357	387	1.23 [0.96, 1.56]	0.10
Local recurrence based on ethnicity	The West	4	283	279	0.51 [0.34, 0.76]	0.001
	The East	4	201	202	0.52 [0.33, 0.84]	0.008
Postoperative metastasis based on ethnicity	The West	4	283	279	0.93 [0.75, 1.16]	0.53
	The East	4	201	202	0.62 [0.44, 0.88]	0.007
Postoperative mortality based on histology	SCC	7	231	247	0.54 [0.42, 0.68]	<0.0001
	AC	5	295	313	1.26 [0.76, 2.06]	0.37

SCC: squamous cell carcinoma AC: adenocarcinoma.

is in accordance with our results and demonstrated the benefit of CRTS in decreasing postoperative mortality compared with SA. The survival benefits for neoadjuvant chemoradiotherapy were similar for squamous-cell carcinoma (HR 0.8, 95% CI 0.68-0.93; $p = 0.004$) and adenocarcinoma (HR 0.75, 0.59-0.95; $p = 0.02$) subgroups. The survival benefit for SCC was consistent with our subgroup analysis for SCC (RR 0.54, 95% CI 0.42–0.68; $p < 0.0001$). There was a smaller benefit associated with AC in our analysis, but it was not statistically significant (RR 1.26, 95% CI 0.76–2.06; $p = 0.37$).

In a meta-analysis conducted by K. Kumagai et al [26], neoadjuvant chemoradiotherapy patients with SCC were associated with a significantly higher risk of postoperative mortality (RR 1.95, 1.06 - 3.60; $p = 0.032$) compared with SA. However, there was no difference among patients with AC or in the esophageal cancer group overall. The reason for this finding may be that most of the included trials were conducted in the 1980s. After excluding trials conducted in the 1980s, the results revealed the difference was not statistically significant compared with surgery alone in the SCC subgroup.



Our meta-analysis investigated postoperative local recurrence and distant metastasis. The two indicators were rarely published in previous meta-analyses. Compared with SA, CRTS significantly decreased the local recurrence and distant metastasis rates of the tumor ($p < 0.05$). This finding may contribute to better survival outcomes and lower postoperative mortality. There was evidence that patients treated with SA were more likely to undergo the scheduled surgery. However, the rate of complete resection in the CRTS group was higher than in the SA group [27]. In theory, neoadjuvant chemoradiotherapy might lead to downstaging of the primary tumor and have positive effects on mediastinal nodes. This may account for the lower local recurrence rate. In this study, no subgroup analysis of postoperative complications, local recurrence or distant metastasis based on histology was investigated because the exact number of patients with these complications was not reported separately for SCC and AC.

We screened 13 RCTs based on different databases from the period of 2000 to 2013 with a larger sample size and a wider distribution range than used in previous studies. This difference is the strength of our study compared to other previous meta-analyses that included studies mostly published in 1990s. The use of radiation has developed rapidly in the past 20 years. Thus, the role of chemoradiotherapy in multimodality therapy has become more important. A systematic analysis using the latest research data is expected to produce more accurate results.

The management of esophageal cancer with neoadjuvant strategies is complex, and the available evidence is conflicting. We have discussed some of these controversies and attempted to resolve them within the context of a well-designed randomized controlled trial. We have made initial recommendations for the trial design, but this remains open for discussion and scrutiny. The meta-analysis in this study has the following limitations: some eligible studies may be missing although our big effort; the current study did lack the accurate number of patients who suffered with postoperative complication, local recurrence and distant metastasis with SCC and AC, respectively. Publication bias existed in postoperative mortality and distant metastasis, which may attribute to less studies included. It seems to us that the conclusions should be interpreted with caution. A larger number studies will be needed to verify our results further.

There is no consensus for the treatment of esophageal carcinoma and standard treatment regimens. However, most clinical studies show that preoperative chemoradiotherapy combined with surgery is a triple therapy model that may improve the clinical efficiency and the long-term survival rate. Thus, this strategy may become the standard treatment regimen [28]. A meta-analysis

by Cavallin [29] revealed that patients with excellent histopathological responses benefit from neoadjuvant regimens. However, patients with poor histopathological responses have no benefit and have worse prognoses. Therefore, predictive markers to allow for individualization of multimodality treatment in locally advanced esophageal cancer are urgently needed. There was evidence that ATP-binding cassette sub-family G member 2 (ABCG2) and Vacuolar-H⁺-ATPase (V-ATPase) were associated with pathological grade, TNM stage and tumor metastasis in esophageal squamous cancer cells [30]. Furthermore, HER2 overexpression was associated with gastroesophageal junction (GEJ) site, intestinal cancer subtype, and well or moderately differentiated carcinomas [31]. All these markers are associated with clinicopathological features for esophageal carcinoma and contribute to optimize treatment regimen.

Conclusions

CRTS significantly reduced postoperative mortality, local recurrence and distant metastasis rates compared to SA. However, CRTS did not increase the postoperative complication incidence compared with SA.

Abbreviations

CRTS: Chemoradiotherapy followed by surgery; SA: Surgery alone; RCTs: Randomized controlled trials.

Competing interests

The authors declare no competing interests.

Authors' contributions

KZ: conceived the study and helped to draft the manuscript; YL: checked the statistics; JD: checked the literature and performed the statistical analysis and then wrote the manuscript; CW and FL: helped with statistical analysis; MX: helped with graphs. All authors have read and approved the final manuscript.

Acknowledgements

This work was financially supported by the National Natural Science Foundation of China Research, China (grant number 21172043). We specially thank Dr. Zhou Zhang from Bio-X Institutes, Key Laboratory for the Genetics of Developmental and Neuropsychiatric Disorders (Ministry of Education), Shanghai Jiao Tong University, Shanghai, 200030, P.R. China who helped with the analysis software.

Author details

¹Department of Radiation Oncology, Fudan University Shanghai Cancer Center, 270 Dongan Road, Shanghai 200032, China. ²Shanghai Entry-Exit Inspection and Quarantine Bureau, 1208 Minsheng Road, Shanghai 200120, China. ³Institute for Nutritional Sciences, Shanghai Institutes for Biological Sciences, Chinese Academy of Sciences, Graduate School of the Chinese Academy of Sciences, Shanghai 200031, P. R. China. ⁴Institutes of Biomedical Sciences, Fudan University, Ming Dao Building, 138 Yi Xue Yuan Road, Shanghai 200032, China.

Received: 27 May 2014 Accepted: 7 July 2014

Published: 16 July 2014

References

1. Jemal A, Bray F, Center MM, Ferlay J, Ward E, Forman D: **Global cancer statistics.** *CA Cancer J Clin* 2011, **61**:69–90.

2. Allum WH, Stenning SP, Bancewicz J, Clark PI, Langley RE: **Long-term results of a randomized trial of surgery with or without preoperative chemotherapy in esophageal cancer.** *J Clin Oncol* 2009, **27**:5062–5067.
3. Omloo JM, Lagarde SM, Hulscher JB, Reitsma JB, Fockens P, van Dekken H, Ten KF, Obertop H, Tilanus HW, van Lanschot JJ: **Extended transthoracic resection compared with limited transhiatal resection for adenocarcinoma of the mid/distal esophagus: five-year survival of a randomized clinical trial.** *Ann Surg* 2007, **246**:992–1000. 1000-1001.
4. Khushalani N: **Cancer of the esophagus and stomach.** *Mayo Clin Proc* 2008, **83**:712–722.
5. Courrech SE, Aleman BM, Boot H, van Velthuysen ML, van Tinteren H, van Sandick JW: **Systematic review of the benefits and risks of neoadjuvant chemoradiation for oesophageal cancer.** *Br J Surg* 2010, **97**:1482–1496.
6. Ychou M, Boige V, Pignon JP, Conroy T, Bouche O, Lebreton G, Ducourtieux M, Bedenne L, Fabre JM, Saint-Aubert B, Geneve J, Lasser P, Rougier P: **Perioperative chemotherapy compared with surgery alone for resectable gastroesophageal adenocarcinoma: an FNCLCC and FFOCD multicenter phase III trial.** *J Clin Oncol* 2011, **29**:1715–1721.
7. Kelsen DP, Winter KA, Gunderson LL, Mortimer J, Estes NC, Haller DG, Ajani JA, Kocha W, Minsky BD, Roth JA, Willett CG: **Long-term results of RTOG trial 8911 (USA Intergroup 113): a random assignment trial comparison of chemotherapy followed by surgery compared with surgery alone for esophageal cancer.** *J Clin Oncol* 2007, **25**:3719–3725.
8. Greer SE, Goodney PP, Sutton JE, Birkmeyer JD: **Neoadjuvant chemoradiotherapy for esophageal carcinoma: a meta-analysis.** *Surgery* 2005, **137**:172–177.
9. GebSKI V, Burmeister B, Smithers BM, Foo K, Zalcberg J, Simes J: **Survival benefits from neoadjuvant chemoradiotherapy or chemotherapy in oesophageal carcinoma: a meta-analysis.** *Lancet Oncol* 2007, **8**:226–234.
10. Sjoquist KM, Burmeister BH, Smithers BM, Zalcberg JR, Simes RJ, Barbour A, GebSKI V: **Survival after neoadjuvant chemotherapy or chemoradiotherapy for resectable oesophageal carcinoma: an updated meta-analysis.** *Lancet Oncol* 2011, **12**:681–692.
11. Jadad AR, Moore RA, Carroll D, Jenkinson C, Reynolds DJ, Gavaghan DJ, McQuay HJ: **Assessing the quality of reports of randomized clinical trials: is blinding necessary?** *Control Clin Trials* 1996, **17**:1–12.
12. Urba SG, Orringer MB, Turrisi A, Lannettoni M, Forastiere A, Strawderman M: **Randomized trial of preoperative chemoradiation versus surgery alone in patients with locoregional esophageal carcinoma.** *J Clin Oncol* 2001, **19**:305–313.
13. An FS, Huang JQ, Xie YT, Chen SH, Rong TH: **A prospective study of combined chemoradiotherapy followed by surgery in the treatment of esophageal carcinoma.** *Zhonghua Zhong Liu Za Zhi* 2003, **25**:376–379.
14. Lee JL, Park SI, Kim SB, Jung HY, Lee GH, Kim JH, Song HY, Cho KJ, Kim WK, Lee JS, Kim SH, Min YI: **A single institutional phase III trial of preoperative chemotherapy with hyperfractionation radiotherapy plus surgery versus surgery alone for resectable esophageal squamous cell carcinoma.** *Ann Oncol* 2004, **15**:947–954.
15. Burmeister BH, Smithers BM, GebSKI V, Fitzgerald L, Simes RJ, Devitt P, Ackland S, Gotley DC, Joseph D, Millar J, North J, Walpole ET, Denham JW: **Surgery alone versus chemoradiotherapy followed by surgery for resectable cancer of the oesophagus: a randomised controlled phase III trial.** *Lancet Oncol* 2005, **6**:659–668. 659-668.
16. Natsugoe S, Okumura H, Matsumoto M, Uchikado Y, Setoyama T, Yokomakura N, Ishigami S, Owaki T, Aikou T: **Randomized controlled study on preoperative chemoradiotherapy followed by surgery versus surgery alone for esophageal squamous cell cancer in a single institution.** *Dis Esophagus* 2006, **19**:468–472.
17. Tepper J, Krasna MJ, Niedzwiecki D, Hollis D, Reed CE, Goldberg R, Kiel K, Willett C, Sugarbaker D, Mayer R: **Phase III trial of trimodality therapy with cisplatin, fluorouracil, radiotherapy, and surgery compared with surgery alone for esophageal cancer: CALGB 9781.** *J Clin Oncol* 2008, **26**:1086–1092.
18. Cao XF, He XT, Ji L, Xiao J, Lv J: **Effects of neoadjuvant radiochemotherapy on pathological staging and prognosis for locally advanced esophageal squamous cell carcinoma.** *Dis Esophagus* 2009, **22**:477–481.
19. Humuzlu M, Ovrebo K, Monge OR, Smaaland R, Wentzel-Larsen T, Viste A: **High-dose chemoradiotherapy followed by surgery versus surgery alone in esophageal cancer: a retrospective cohort study.** *World J Surg Oncol* 2010, **8**:46.
20. Lv J, Cao XF, Zhu B, Ji L, Tao L, Wang DD: **Long-term efficacy of perioperative chemoradiotherapy on esophageal squamous cell carcinoma.** *World J Gastroenterol* 2010, **16**:1649–1654.
21. van Hagen P, Hulshof MC, van Lanschot JJ, Steyerberg EW, van Berge HM, Wijnhoven BP, Richel DJ, Nieuwenhuijzen GA, Hospers GA, Bonenkamp JJ, Cuesta MA, Blaisse RJ, Busch OR, Ten Kate FJ, Creemers GJ, Punt CJ, Plukker JT, Verheul HM, Spillenaar Bilgen EJ, van Dekken H, van der Sangen MJ, Rozema T, Biermann K, Beukema JC, Piet AH, van Rij CM, Reinders JG, Tilanus HW, van der Gaast A: **Preoperative chemoradiotherapy for esophageal or junctional cancer.** *N Engl J Med* 2012, **366**:2074–2084.
22. Fujiwara Y, Yoshikawa R, Kamikonya N, Nakayama T, Kitani K, Tsujie M, Yukawa M, Hara J, Yamamura T, Inoue M: **Neoadjuvant chemoradiotherapy followed by esophagectomy vs. surgery alone in the treatment of resectable esophageal squamous cell carcinoma.** *Mol Clin Oncol* 2013, **1**:773–779.
23. Smit JK, Guler S, Beukema JC, Mul VE, Burgerhof JG, Hospers GA, Plukker JT: **Different recurrence pattern after neoadjuvant chemoradiotherapy compared to surgery alone in esophageal cancer patients.** *Ann Surg Oncol* 2013, **20**:4008–4015.
24. Saeki H, Morita M, Nakashima Y, Sonoda H, Hashimoto K, Egashira A, Oki E, Ohga T, Kakeji Y, Maehara Y: **Neoadjuvant chemoradiotherapy for clinical stage II-III esophageal squamous cell carcinoma.** *Anticancer Res* 2011, **31**:3073–3077.
25. Kelly P, Appleyard V, Murray K, Paulin F, Lamont D, Baker L, Suttie S, Exon D, Thompson A: **Detection of oesophageal cancer biomarkers by plasma proteomic profiling of human cell line xenografts in response to chemotherapy.** *Br J Cancer* 2010, **103**:232–238.
26. Kumagai K, Rouvelas I, Tsai JA, Mariosa D, Klevebro F, Lindblad M, Ye W, Lundell L, Nilsson M: **Meta-analysis of postoperative morbidity and perioperative mortality in patients receiving neoadjuvant chemotherapy or chemoradiotherapy for resectable oesophageal and gastro-oesophageal junctional cancers.** *Br J Surg* 2014, **101**:321–338.
27. Jin HL, Zhu H, Ling TS, Zhang HJ, Shi RH: **Neoadjuvant chemoradiotherapy for resectable esophageal carcinoma: a meta-analysis.** *World J Gastroenterol* 2009, **15**:5983–5991.
28. Zemanova M, Novak F, Vitek P, Pazdro A, Smejkal M, Pazdrova G, Petruzelka L: **Outcomes of patients with oesophageal cancer treated with preoperative chemoradiotherapy, followed by tumor resection: influence of nutritional factors.** *J BUON* 2012, **17**:310–316.
29. Cavallin F, Scarpa M, Alfieri R, Cagol M, Castoro C: **The Role of Surgery in Patients With a Complete Clinical Response After Chemoradiation for Esophageal Cancer.** *Ann Surg* 2014, doi:10.1097/SLA.0000000000000666.
30. Huang L, Lu Q, Han Y, Li Z, Zhang Z, Li X: **ABCG2/V-ATPase was associated with the drug resistance and tumor metastasis of esophageal squamous cancer cells.** *Diagn Pathol* 2012, **7**:180.
31. Shan L, Ying J, Lu N: **HER2 expression and relevant clinicopathological features in gastric and gastroesophageal junction adenocarcinoma in a Chinese population.** *Diagn Pathol* 2013, **8**:76.

doi:10.1186/1746-1596-9-151

Cite this article as: Deng et al.: Meta-analysis of postoperative efficacy in patients receiving chemoradiotherapy followed by surgery for resectable esophageal carcinoma. *Diagnostic Pathology* 2014 **9**:151.

Submit your next manuscript to BioMed Central and take full advantage of:

- **Convenient online submission**
- **Thorough peer review**
- **No space constraints or color figure charges**
- **Immediate publication on acceptance**
- **Inclusion in PubMed, CAS, Scopus and Google Scholar**
- **Research which is freely available for redistribution**

Submit your manuscript at
www.biomedcentral.com/submit

