



Since January 2020 Elsevier has created a COVID-19 resource centre with free information in English and Mandarin on the novel coronavirus COVID-19. The COVID-19 resource centre is hosted on Elsevier Connect, the company's public news and information website.

Elsevier hereby grants permission to make all its COVID-19-related research that is available on the COVID-19 resource centre - including this research content - immediately available in PubMed Central and other publicly funded repositories, such as the WHO COVID database with rights for unrestricted research re-use and analyses in any form or by any means with acknowledgement of the original source. These permissions are granted for free by Elsevier for as long as the COVID-19 resource centre remains active.



Research Paper

Ethnicity and clinical outcomes in COVID-19: A systematic review and meta-analysis

Shirley Sze^{a,1}, Daniel Pan^{b,c,1}, Clarece R. Nevill^{d,1}, Laura J. Gray^d, Christopher A. Martin^{b,c}, Joshua Nazareth^{b,c}, Jatinder S. Minhas^a, Pip Divall^e, Kamlesh Khunti^f, Keith R. Abrams^d, Laura B. Nellums^{g,2}, Manish Pareek^{b,c,2,*}

^a Department of Cardiovascular Sciences, University of Leicester, United Kingdom

^b Department of Respiratory Sciences, University of Leicester, United Kingdom

^c Department of Infection and HIV Medicine, University Hospitals Leicester NHS Trust, United Kingdom

^d Department of Health Sciences, University of Leicester, United Kingdom

^e University Hospitals of Leicester, Education Centre Library, Glenfield Hospital and Leicester Royal Infirmary, United Kingdom

^f Diabetes Research Centre, University of Leicester, United Kingdom

^g Division of Epidemiology and Public Health, School of Medicine, University of Nottingham, United Kingdom

ARTICLE INFO

Article History:

Received 15 September 2020

Revised 26 October 2020

Accepted 26 October 2020

Available online 12 November 2020

Keywords:

SARS-CoV-2

COVID-19

Black

Asian

Hispanic

ethnic

ethnicity

race

disproportionate

outcome

infection

transmission

ITU admission

death

ABSTRACT

Background: Patients from ethnic minority groups are disproportionately affected by Coronavirus disease (COVID-19). We performed a systematic review and meta-analysis to explore the relationship between ethnicity and clinical outcomes in COVID-19.

Methods: Databases (MEDLINE, EMBASE, PROSPERO, Cochrane library and MedRxiv) were searched up to 31st August 2020, for studies reporting COVID-19 data disaggregated by ethnicity. Outcomes were: risk of infection; intensive therapy unit (ITU) admission and death. PROSPERO ID: 180654.

Findings: 18,728,893 patients from 50 studies were included; 26 were peer-reviewed; 42 were from the United States of America and 8 from the United Kingdom. Individuals from Black and Asian ethnicities had a higher risk of COVID-19 infection compared to White individuals. This was consistent in both the main analysis (pooled adjusted RR for Black: 2.02, 95% CI 1.67–2.44; pooled adjusted RR for Asian: 1.50, 95% CI 1.24–1.83) and sensitivity analyses examining peer-reviewed studies only (pooled adjusted RR for Black: 1.85, 95% CI: 1.46–2.35; pooled adjusted RR for Asian: 1.51, 95% CI 1.22–1.88). Individuals of Asian ethnicity may also be at higher risk of ITU admission (pooled adjusted RR 1.97 95% CI 1.34–2.89) (but no studies had yet been peer-reviewed) and death (pooled adjusted RR/HR 1.22 [0.99–1.50]).

Interpretation: Individuals of Black and Asian ethnicity are at increased risk of COVID-19 infection compared to White individuals; Asians may be at higher risk of ITU admission and death. These findings are of critical public health importance in informing interventions to reduce morbidity and mortality amongst ethnic minority groups.

© 2020 The Author(s). Published by Elsevier Ltd. This is an open access article under the CC BY license (<http://creativecommons.org/licenses/by/4.0/>)

1. Introduction

Over 39 million people have been infected with Severe Acute Respiratory Syndrome Coronavirus-2 (SARS-CoV-2) and over 1 million have died from Coronavirus Disease (COVID-19) since December 2019 [1]. Ethnicity has come under scrutiny as an important risk factor for infection, severe disease and death, with evidence that ethnic

minorities may be at increased risk of COVID-19 morbidity and mortality [2,3].

Understanding the relationship between ethnicity and COVID-19 is an urgent research priority, in order to reduce the disproportionate burden of disease in Black, Asian and other minority ethnic groups [4,5]. Recently there has been an increase in the volume of literature, both published and in preprint servers, on the association of ethnicity with vulnerability to COVID-19 infection and clinical outcomes [6]. A comprehensive synthesis of existing evidence examining the relationship between ethnicity and COVID-19 is urgently needed in order to inform clinical care and public health policy. In particular, it is important to disentangle whether worse reported outcomes in ethnic minority groups are attributable to an increased risk of becoming

* Corresponding author at: Department of Respiratory Sciences, University of Leicester, United Kingdom.

E-mail address: mp426@le.ac.uk (M. Pareek).

¹ Joint first authors.

² Joint senior authors.

Research in context

Evidence before this study

Increasing evidence suggests that individuals from certain ethnic groups may have worse clinical outcomes from Coronavirus disease (COVID-19). However, whether the associations are related to increased vulnerability to infection, or more severe disease (intensive therapy unit (ITU) admission or mortality) is unknown. There is no published meta-analysis of existing data on this topic.

Added value of this study

In this systematic review and meta-analysis, we searched multiple databases (within MEDLINE, EMBASE, PROSPERO and the Cochrane library) and preprint data on MedRxiv from 1st December 2019 to 31st August 2020. 18,728,893 patients from 50 studies were included in the meta-analyses; by 31st August, 26 were peer-reviewed. In pooled adjusted analyses, Black and Asian individuals had an increased risk of infection with Severe Acute Respiratory Syndrome Coronavirus-2 (SARS-CoV-2) compared to White individuals, consistent in both the main analysis and sensitivity analysis examining only peer-reviewed studies. Asian patients may also have a higher risk of ITU admission (although all studies examining ITU admission in Asians were not yet peer-reviewed); and death (pooled adjusted risk ratios approached significance).

Implications of all the available evidence

This is the first meta-analysis to report on the effect of ethnicity on clinical outcomes in patients with COVID-19. We found increased risk of infection amongst those of Black and Asian ethnicities compared to White individuals. Asian individuals may also be at higher risk of ITU admission and death, even when confounders such as age, sex and comorbidities are adjusted for. Future studies must explore the reasons for this suggested association, adjusting for the risk of infection. Our findings are of critical public health importance and should inform policy on minimising SARS-CoV-2 exposure in ethnic minority groups.

December 2019 to 31st August 2020. We also reviewed any peer reviewed publications on *MedRxiv* during the same period.

We included studies with original clinical data on COVID-19 infection, ITU admission, or mortality disaggregated by ethnicity. We excluded correspondence pieces, area level studies (reporting aggregated data rather than individual risk), and predictive modelling (mathematical modelling, machine learning or computational) studies, or those that only included basic science or animal data or did not report individual data (e.g. studies of infection breakouts). Retracted papers were also excluded. If studies assessed *race* and *ethnicity* separately, data were only extracted for mutually exclusive groups. For example, if two separate variables were presented: for 'race' and 'ethnicity', the variable which included 'Black, Asian and White' was chosen to represent ethnicity. We predicted that this would most commonly occur in some American studies, where *ethnicity* may be used to refer to 'Hispanic' or 'Non-Hispanic', and *race* to refer to 'Black, Asian and White'. This was a pragmatic way of ensuring that we assessed ethnicity in a standardised way, across multiple studies which assessed ethnicity or race differently.

We attempted to minimise the possibility of including patients from the same population twice when exploring one outcome. Where multiple studies of what is likely to be the same population were identified (for example, multiple studies using the UK Biobank database or data from national GP records), the most recent version up to 31st August 2020 was used, with published peer-reviewed studies favoured over those in the preprint database (up to 31st August 2020). Papers which covered a larger number of patients over a longer period of time were favoured over smaller studies, should it be likely that they both investigated the same patients. However, studies which assessed different cohorts of patients (for example, from different countries) in the same paper, or studies which were based on the same population but explored different outcomes were included in the analysis.

2.2. Study selection and data collection

DP and SS independently screened titles, abstracts and full-text articles reporting potentially eligible studies. Disagreements were resolved by discussion or consultation with an adjudicator (MP) when necessary.

2.3. Data extraction

One reviewer (DP, SS, CAM, JN, JSM, LBN) independently extracted data from each potentially eligible article. Data extraction was duplicated for all papers by an independent researcher (CN). We stratified patients into the following ethnic groups based on the categorisations used in the included papers: White (including White British, Caucasian, White European); Asian (including South Asian, Asian/Pacific-Islander and Chinese); Black (including Black Caribbean and Black African); Hispanic (including Hispanic and Latino); Native American; Mixed and Other. Individuals who had ethnicity data missing were excluded. When the proportion of patients of each ethnicity was not presented in the text, we calculated the proportion from data presented in tables, or supplementary material from the manuscript. The outcomes studied in relation to different ethnic groups were:

- Infection with SARS-CoV-2
- ITU admission
- Death

Patients with COVID-19 were defined as those who tested positive for SARS-CoV-2 by nasopharyngeal swab or had clinical evidence of COVID-19, as indicated by clinical signs and symptoms, along with radiology and laboratory tests. We excluded studies which defined

infected, developing severe COVID-19 pneumonia or death. We therefore conducted a systematic review and meta-analysis of both published and preprint research to study the association of ethnicity with COVID-19 infection and outcomes. Specifically, we aimed to identify ethnic differences in the risk of becoming infected with SARS-CoV-2 as well as subsequent intensive therapy unit (ITU) admission (a surrogate marker for severe COVID-19 pneumonia) and death.

2. Methods

We conducted the research according to the Preferred Reporting Items for Systematic Reviews and Meta-Analyses (PRISMA) guidelines, and registered our review on PROSPERO (PROSPERO ID: 180654) on 21st April 2020 [7].

2.1. Data sources and searches

An academic librarian (PD) developed the search strategies, and carried out a search of the databases MEDLINE, EMBASE, PROSPERO and the Cochrane Library, as shown in the Supplementary materials 1. We searched for any articles published in English from 1st

patients with COVID-19 as positive by serology, since serological tests are not always initially positive during acute infection and were not widely available or validated when we started our meta-analysis in April 2020.

2.4. Quality assessment

Quality assessment was carried out by DP, SS, CAM, JN, JSM, and LBN. The Joanna Briggs Institute Critical Appraisal Tools were used to assess the quality of evidence for all studies relevant to each study design [8]. Each primary study was assigned two points if they satisfied the criteria used in the relevant tool; one if only partially satisfied, and zero if not satisfied. Any disagreements were resolved through group consensus. A quality appraisal score was calculated by using the numerator and denominator relevant for each study. Publication bias was assessed visually using funnel plots and formally with Egger's test for primary analyses including at least 10 studies [9].

2.5. Statistical analysis

We first synthesised data on the prevalence of each outcome and unadjusted data by ethnicity. We excluded studies which did not record all clinical outcomes. Raw counts were used for the unadjusted data to calculate odds ratios (OR) and 95% confidence intervals (CI).

We also synthesised data adjusted for key confounders. For risk of infection and ITU admission, we extracted adjusted risk ratios (RR). Adjusted OR were converted to adjusted RR using the conversion method as recommended by the Cochrane Handbook [10]. For mortality, we extracted adjusted hazard ratios (HR) (95% CI) where possible, and assumed adjusted RR to approximate an adjusted HR.

Some studies presented multiple models with different sets of confounders. We included the model which most closely matched our *a priori* chosen confounders of age, sex, deprivation, obesity, and comorbidities. We recorded other confounders that a study had adjusted for, including the way comorbidities were considered. For

both the adjusted and unadjusted comparisons, data were extracted for analyses which used White ethnicity as the reference group.

For ITU admission and mortality, we included studies which reported suspected or confirmed COVID-19 patients in their analyses. For mortality, we conducted a further analysis to include studies which looked at the risk of death from COVID-19 in the general population (i.e., those with and without COVID-19). Sensitivity analyses were also conducted excluding:

- For the outcome of death, studies which did not include data for those still hospitalised at the end of the follow-up, since these studies may underestimate death;
- Studies which were of mixed populations (hospitalised and non-hospitalised patients), since these studies may also underestimate ITU admission or death;
- Studies which were not peer reviewed (on *MedRxiv*)

For all outcomes and data types, we synthesised data (prevalence, unadjusted OR and adjusted RR/HR) using the DerSimonian and Laird random effects model [11]. I^2 was used to assess heterogeneity. All meta-analyses were conducted using Stata version 16.1 (StataCorp, United States). P values <0.05 were considered to be statistically significant.

2.6. Role of funding

The funders had no role in study design, data collection and analysis, decision to publish, or preparation of the manuscript.

3. Results

3.1. Study selection

611 articles were identified in the published literature between 1st December 2019 and 31st August 2020 as shown in Fig. 1. An additional 901 articles were identified from *MedRxiv* within the same period, giving a total of 1512 articles. 218 articles were excluded

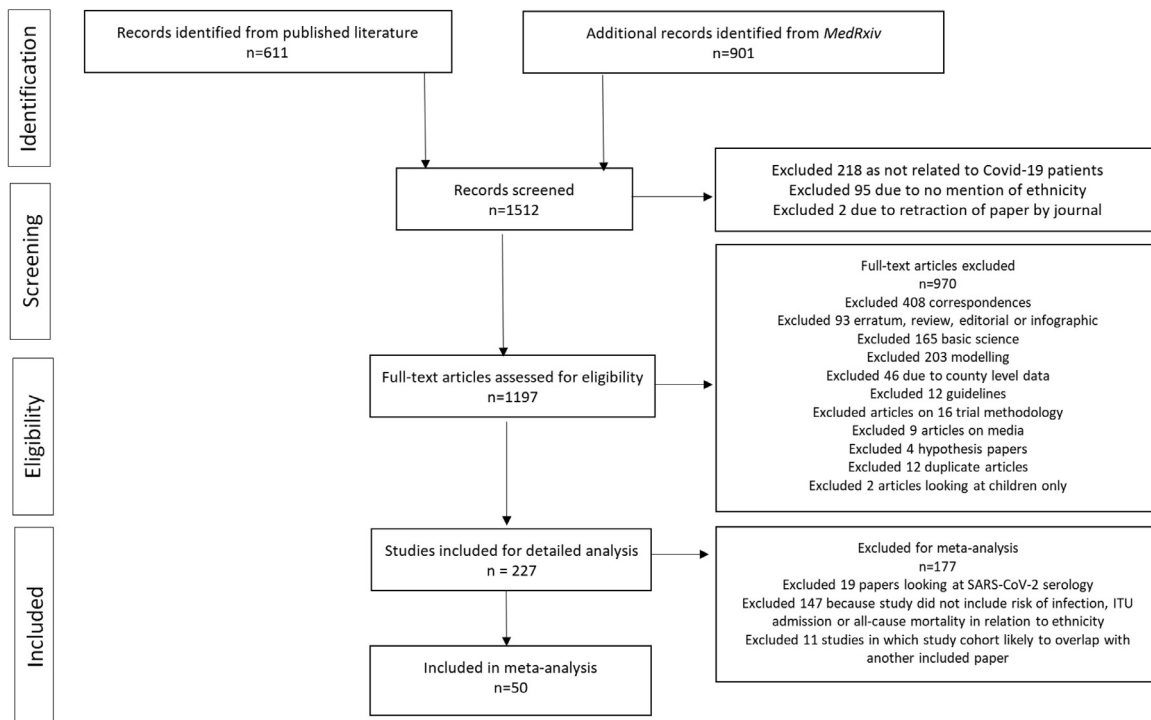


Fig. 1. PRISMA flowchart of study.

because they did not report on individuals with COVID-19; 95 were excluded as they did not mention ethnicity. Two papers were excluded due to retraction during the study period. Of the remaining 1197 articles that were assessed for eligibility in full-text screening, 970 did not meet inclusion criteria (reasons for exclusion, Fig. 1). A further 177 were excluded from the meta-analysis, including 19 studies which defined patients with COVID-19 as those with positive SARS-CoV-2 serology. 147 studies which provided no data on our predefined outcomes, and 11 studies in which the cohort was likely to have overlapped with another paper included in our data synthesis.

3.2. Study characteristics

A total of 18,728,893 patients from 50 papers were included in the meta-analyses after excluding any missing data within the studies; 14,506,023 (77%) were White; 1,267,802 (7%) were Asian; 527,944 (3%) were Black, 1,578,192 (8%) were Hispanic, 1,113 were Native American, 229,822 (2%) were Mixed, and 617,997 (3%) were of Other ethnic group [12–61, 81].

Detailed descriptions of the included studies are shown in Table 1. All studies included patients who had a positive SARS-CoV-2 polymerase-chain reaction (PCR) test by nasopharyngeal swab; two published studies also included patients who were diagnosed with COVID-19 based on clinical suspicion (suggestive clinical presentation, radiology and other blood tests/observations) [29,36]. Most studies ($n = 42$, 84%) were from the USA; the remaining eight (16%) were from the UK (Table 1). One study described two separate cohorts from the USA and the UK [21]. One study was a case series; one was a cohort and a case control; three were cross-sectional and the remaining were cohort studies. 28 (56%) reported on patients in hospital; nine (18%) reported on patients in the community; 13 (26%) reported on both. As of 31st August 2020, over half ($n = 29$, 58%) of papers included were published.

The overall quality of published articles was higher than those in preprint (median published quality score: 84%, interquartile range 73%–91%; median preprint article score: 73%, interquartile range 66%–82%); although both published articles and those presented on preprint servers maintained relatively high quality scores throughout the study period, as shown in Fig. 2.

Table 2 shows the quality assessment score of all 50 articles, the outcomes each study investigated, comorbidities included in the paper and confounders that were adjusted for. 14 (28%) studies investigated the risk of infection; 15 (30%) investigated the risk of ITU admission and 33 (66%) investigated the risk of death. Only one paper investigating the risk of infection did not consider comorbidities. 15 (30%) studies did not adjust for any confounders when assessing outcomes related to ethnicity.

3.3. Risk of SARS-CoV-2 infection

Pooled prevalence, unadjusted odds ratios (OR) and adjusted risk ratios (RR) for the risk of SARS-CoV-2 infection, stratified by ethnicity is shown in Table 3. Pooled prevalence of infected patients was highest in those of Black ethnicity. In adjusted analyses, those of Black ethnicity were twice as likely to become infected with SARS-CoV-2 compared to White individuals (pooled adjusted RR 2.02, 95% CI 1.67–2.44, $I^2=84.2%$, amongst 8 studies); Asian and Hispanic individuals were also more likely to become infected compared to White individuals (Asian: pooled adjusted: RR 1.50, 95% CI 1.24–1.83, $I^2=67.3%$ across 5 studies; Hispanic: pooled adjusted RR 1.77, 95% CI 1.39–2.25 across 3 studies, $I^2=0.0%$), as shown in Fig. 3. In sensitivity analyses examining only peer-reviewed publications, increased risk of infection amongst Black and Asian groups were maintained amongst adjusted analyses (Black pooled adjusted RR:1.85, 95%CI: 1.46–2.35, $I^2=84.2%$ across 5 studies; Asian pooled adjusted RR: 1.51,

95% CI: 1.22–1.88, $I^2=74.8%$ across 4 studies), but no studies investigating Hispanic individuals had yet been peer-reviewed. Data for Mixed and Native American ethnicities were limited by small numbers of patients. Across all pooled analyses, there were mixed levels of heterogeneity.

3.4. ITU admission

Pooled prevalence, unadjusted OR and adjusted RR for the risk of ITU admission stratified by ethnicity is shown in Table 4. Pooled prevalence was highest among those of Black ethnicity. In adjusted analyses examining only hospitalised patients, Asians were more likely to be admitted to ITU compared to White individuals (pooled adjusted RR: 1.97, 95% CI: 1.34–2.89, $I^2=0.0%$ amongst 2 studies) as shown in Fig. 4. However, no published studies by 31st August have assessed the risk of ITU admission amongst Asian cohorts. Black (pooled adjusted RR: 1.10, 95% CI:0.83–1.44, $I^2=54.5%$ amongst four studies) and Hispanic (pooled adjusted RR: 1.16, 95% CI: 0.86–1.56, $I^2=52%$ across 3 studies) patients were not at increased risk of ITU admission compared to White individuals. When considering studies in which the denominator were a combination of hospitalised patients and those with COVID-19 in the community, the risk of ITU admission was only higher in those of Black ethnicity compared to White ethnicity (pooled adjusted RR: 1.90, 95% CI: 1.38–2.61, $I^2=52.7%$ across 3 studies). Data for all ethnicities were limited by small numbers of studies. Across all pooled analyses, there were lower levels of heterogeneity compared to risk of infection..

3.5. Mortality

Pooled prevalence, unadjusted OR and adjusted hazard ratio (HR)/RR for the risk of death stratified by ethnicity is shown in Table 5. Pooled prevalence was highest amongst White and Asian ethnicities. In adjusted analyses of patients with COVID-19 only, there was a signal towards increased risk of death in Asian individuals compared to White (pooled adjusted HR/RR: 1.22, 95% CI: 0.99–1.63, $I^2=61.8%$ amongst 6 studies) as shown in Fig. 5. This signal was stronger in sensitivity analyses looking only at studies including patients with COVID-19 as well as those without COVID-19 in the general population (pooled adjusted HR/RR: 1.33, 95% CI: 1.11–1.60, $I^2=69.0%$ amongst 8 studies) as well as studies where the denominator was hospitalised patients only (pooled adjusted HR/RR: 1.27, 95% CI: 1.01–1.57 across 5 studies, $I^2=64.7%$) but was weaker when we examined studies that only included those who had a documented outcome of discharge, or death (pooled adjusted HR/RR: 1.18, 95% CI:0.92–1.51 across 5 studies, $I^2=67.9%$) and studies which had been peer reviewed (pooled adjusted HR/RR:1.19, 95% CI:0.77–1.83 across 2 studies, $I^2=54.3%$). In adjusted analyses, those of Black and Hispanic ethnicities were not at increased risk of death compared to White individuals, across all sensitivity analyses. Data for Native American, Mixed and Other ethnicities were limited by small numbers of studies. Across all pooled analyses, there were lower levels of heterogeneity compared to risk of infection.

3.6. Risk of bias across studies

For prevalence estimates of infection, there was clear asymmetry in funnel plots for Asian and White ethnic groups (Egger's test $p = 0.002$ and $p < 0.001$ respectively, Supplementary materials 5). Studies with very low estimates of infection had very high precision, whereas studies with higher infection estimates had lower precision. For unadjusted OR estimate of infection in Asian vs White ethnic groups, Egger's test indicates potential bias ($p = 0.002$). However the funnel plot indicates that this result is being driven by an outlier study (one with low precision but a high estimate of OR).

Table 1
Characteristics of included studies. Peer reviewed studies are highlighted in bold.

Study first author	Country	Study design	Setting	Published period	Population	White	Asian	Black	Hispanic	Mixed	Native American	Other
Ahmed	USA	Cohort	Community and Hospital	May 2020	All patients within Uhealth, Utah Health system	13151	446	361	2804	0	223	542
Argenziano	USA	Case series	Hospital	May 2020	All patients who received care at a New York Hospital	144	19	181	248	0	0	408
Auld	USA	Cohort	Hospital	May 2020	Critically ill adults across one academic health care system	39	7	153	0	0	0	18
Azar	USA	Cohort	Hospital/Community	May 2020	All patients at Sutter Health healthcare system in Northern California	6779	1432	940	2681	0	98	2105
Bril	UK	Cohort	Hospital	June 2020	Retrospective cohort study of first 450 patients admitted to one hospital with confirmed COVID-19	265	51	33	0	0	0	77
Caraballo	USA	Cohort	Hospital	May 2020 (subsequently published in September 2020)	Yale Heart Failure Registry (NCT04237701) includes 26,703 patients with heart failure across a 6-hospital integrated health care system in Connecticut was queried on April 16th, 2020 for all patients.	119	0	62	0	0	0	0
Chamie	USA	Cohort	Community	August 2020	Patients from the United in Health Study – looking at participants in San-Francisco	1442	326	0	1427	0	327	327
Crouse	USA	Cohort	Community	July 2020	Retrospective observational study of subjects at the University of Alabama in Birmingham Hospital	220	0	311	0	0	0	73
Ebinger	USA	Cohort	Hospital	July 2020	All patients who presented to a Healthcare system in LA	283	35	58	0	0	0	66
Ellington	USA	Cohort	Community	June 2020	CDC reports of women of reproductive age	18,817	2123	16,381	25,442	0	0	2620
Garibaldi	USA	Cohort	Hospital	May 2020 (subsequently published in September 2020)	Five hospitals in the Johns Hopkins Medicine system	266	48	333	134	0	0	43
Gold	USA	Cohort	Hospital	May 2020	Hospitalised adults in Georgia (primarily metropolitan Atlanta)	32	8	247	10	0	0	0
Gu	USA	Cohort	Community	June 2020	Participants tested in Michigan	3374	0	981	0	0	0	486
Jun	USA	Cohort	Hospital	August 2020	Participants presenting to five acute care hospitals in New York City, within the Mount Sinai Health system	689	144	825	892	0	0	458
Khan	USA	Cohort	Community and Hospital	May 2020	Patients presenting to TriNetX, which has access to healthcare records from 34 healthcare organisations	3435	0	2621	0	0	0	0
Kim	USA	Cohort	Hospital	May 2020	154 acute care hospitals in 74 counties in 13 states, hospitalised patients	1178	0	755	306	0	0	251
Levy	USA	Cohort	Hospital	June 2020	Thirteen acute care hospitals in the New York City Area, within the Northwell Health System	4250	952	2336	0	0	0	3048

(continued on next page)

Table 1 (Continued)

Study first author	Country	Study design	Setting	Published period	Population	White	Asian	Black	Hispanic	Mixed	Native American	Other
Lo	UK	Cohort	Community	June 2020	Participants in the USA and UK who used the Covid symptom study smartphone application	2104829	64662	13057	2379	48908	0	8893
Lo	USA	Cohort	Community	June 2020	Participants in the USA and UK who used the Covid symptom study smartphone questionnaire	147325	6828	4977	9251	4774	00	2044
Lusignan	UK	Cross-section	Community and Hospital	May 2020	Patients from primary care medical records in the oxford RCGP research and surveillance centre network	2497	152	58	0	81	0	0
Marcello	USA	Cohort	Hospital	June 2020	Patients presenting to New York City Health and Hospitals	2316	1739	5790	6249	0	0	6013
Marie Del Vale	USA	Cohort	Hospital	August 2020	Hospitalised patients at the Mount Sinai Health System in New York	277	73	278	577	0	0	63
Martin	UK	Cohort	Community and Hospital	July 2020	Patients presenting to University Hospitals of Leicester NHS Trust, UK	3067	710	122	0	0	0	152
McCarty	USA	Cohort	Hospital	August 2020	Patients presenting to 9 Massachusetts hospitals	189	52	14	113	0	0	11
Mendy	USA	Cohort	Community and Hospital	June 2020	Patients diagnosed at the University of Cincinnati health system	201	0	176	224	0	0	88
Miles	UK	Cohort	Hospital	July 2020	Patients admitted to one hospital in London, aged 70+	138	16	16	0	19	0	28
Monteiro	USA	Cohort	Hospital	August 2020	Patients admitted to the UCLA hospital System	49	9	7	33	0	0	14
Narain	USA	Cohort	Hospital	June 2020	Hospitalised patients in the Northwell health system	1042	410	576	0	177	0	893
Niedzwiedz	UK	Cohort	Community and Hospital	May 2020	UK Biobank analysis	371,460	8456	6395	0	2356	0	3429
Williamson	UK	Cohort	Community	July 2020	NHS primary healthcare data; CPNS inpatient hospital death notifications; ONS death data	10,962,999	1,030,980	343,437	0	171,929	0	323,813
Patel N	USA	Cohort	Hospital	August 2020	Clinical outcomes of adults hospitalised with COVID-19 affiliated with Northwestern Medicine	611	0	288	662	0	0	152
Patel M	USA	Cohort	Hospital	August 2020	Patients admitted to Temple University Hospital in Philadelphia	9	0	53	23	0	0	19
Petrak	USA	Cohort	Hospital	June 2020 (subsequently published in September 2020)	To evaluate the clinical outcomes of patients treated with Tocilizumab	56	5	43	32	0	0	9
Perez-Guzman	UK	Cohort	Hospital	August 2020	Consecutive patients admitted for COVID-19 in 3 large London hospitals	235	94	133	0	0	0	17
Price-haywood	USA	Cohort	Community and Hospital	May 2020	Patients seen within Ochsner Health in Louisiana	1030	0	2451	0	0	0	0
Rajiter	USA	Cohort	Hospital	June 2020	Hospitalised patients from 4 hospitals in Florida	76	0	153	33	0	0	13
Ramaswamy	USA	Cohort	Hospital	May 2020	Patients part of Cone Health's enterprise analytics data	38	0	40	0	0	0	8
Rentsch	USA	Cohort	Community and Hospital	April 2020	Data from the veterans' association (VA) national cooperative data	2135	0	1126	294	0	0	234

(continued on next page)

Table 1 (Continued)

Study first author	Country	Study design	Setting	Published period	Population	White	Asian	Black	Hispanic	Mixed	Native American	Other
Rosenberg	USA	Cohort	Hospital	May 2020	warehouse on members from the VA birth cohort A random sample of all admitted patients in 25 hospitals representing 88% of patients with COVID-19 in the New York region	321	0	371	364	0	0	243
Rozenfeld	USA	Cross-sectional	Community	July 2020	Patients tested for COVID-19 as part of Providence Health System	24,799	1713	1649	0	0	465	0
Sakowicz	USA	Cohort	Community	August 2020	Pregnant women presenting to NorthWestern Memorial Hospital	795	107	169	0	0	0	346
Sapey	UK	Cohort	Hospital	August 2020 (subsequently published in September 2020)	Hospitalised patients admitted to University Hospitals Birmingham	1540	410	134	0	18	0	67
Somers	USA	Cohort	Hospital	July 2020	Patients admitted to Michigan Medicine for COVID-19 pneumonia	41	0	81	0	0	0	32
Tartof	USA	Cohort	Hospital	August 2020	All Kaiser Permanente Southern California members diagnosed with COVID-19	1210	1036	584	3751	0	0	335
Vahidy	USA	Cross-sectional	Community and Hospital	July 2020	COVID-19 surveillance and outcomes registry (CURATOR) at the Houston Methodist Hospital system	12602	1860	4396	263	1578	0	0
Velu	USA	Cohort	Community and Hospital	June 2020	Clinical validation and implementation of lab-developed real time RT-PCR	488	101	171	0	0	0	210
Wang	USA	Cohort	Community and Hospital	June 2020	Patients with COVID-19 in New York City	2044	385	1787	0	0	0	2860
Wang	USA	Cohort	Hospital	May 2020	Patient-level data were extracted from electronic medical records for 28,336 patients tested for SARS-CoV-2 at the Mount Sinai Health System	802848	142080	107255	0	0	0	254682
Yehia	USA	Cohort	Hospital	August 2020	Cohort of patients presenting to 92 hospitals across 12 states in the USA	4606	0	4180	0	0	0	2424
Zakeri	UK	Case-control and Cohort	Community and Hospital	July 2020	Patients admitted to King's College Hospital Foundation Trust	2313	322	1363	0	0	0	362
Zimmerman	USA	Cohort	Hospital	August 2020	Patients admitted to the Nuance Health System	177	11	36	0	0	0	29

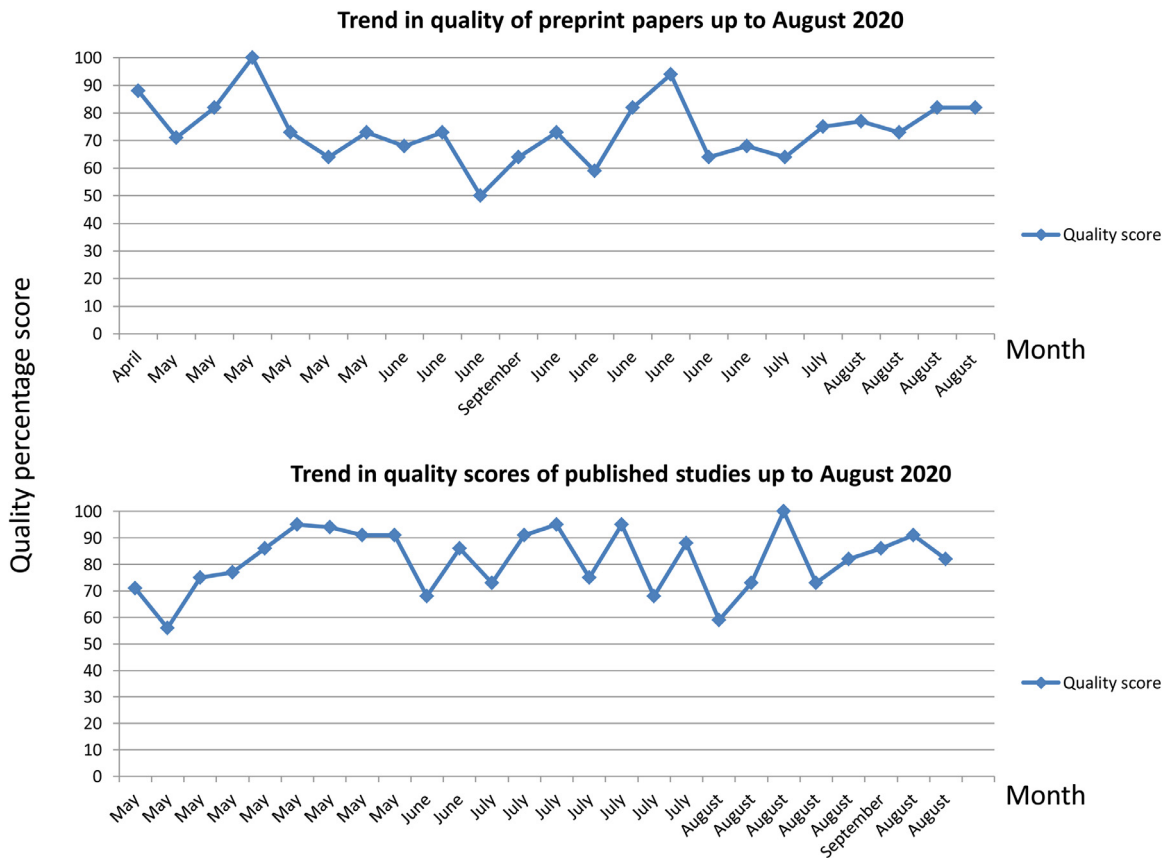


Fig. 2. Temporal trends in quality assessment scores of published studies and those on MedRxiv.

For prevalence estimates of ITU admission, Egger's test for White ethnic group indicates potential bias ($p = 0.002$). Again, the funnel plot indicates an outlier study possibly driving this result.

For prevalence estimates of mortality, there was asymmetry in the funnel plots for the Asian and Black ethnic groups (Egger's test $p = 0.0028$ and $p < 0.001$, respectively).

4. Discussion

In a previous systematic review, we highlighted the need for more studies to investigate the relation between COVID-19, ethnicity and specific clinical outcomes [2]. Some months later, a large body of literature is available. We now present the first meta-analysis investigating this issue. We found that individuals from Asian and Black ethnic groups are more likely to be infected by SARS-CoV-2 compared to those of White ethnicity. Those of Asian ethnicity may be at increased risk of death compared to White patients; this may be related to a higher likelihood of developing severe COVID-19 pneumonia and being admitted to ITU although this finding is limited by the relatively small number of studies which investigated ITU admission as an outcome.

Our findings suggest that the disproportionate impact of COVID-19 on Black and Asian communities is mainly attributable to increased infection amongst these communities. Many explanations exist as to why there may be an elevated level of SARS-CoV-2 infection in ethnic minority groups. Contact tracing studies provide strong evidence that sustained close contact with someone who is infected with SARS-CoV-2 drives the majority of new infections. SARS-CoV-2 is much more efficiently spread in enclosed and crowded environments [62]. Individuals from ethnic minority backgrounds are more likely to live in larger household sizes comprised of multiple generations [26,63]. They are also more likely to have lower socioeconomic

status, which may increase the likelihood of living in overcrowded households, or accommodation with shared facilities or communal areas [64,65]. Furthermore, individuals from ethnic minority backgrounds are more likely to be employed as essential workers, or less able to work from home, and as a result have continued to have contact with others through work or commuting [63]. In the Bureau of Labour Statistics Current Population Survey for the year 2019, Hawkins found that Black and Asian workers in the USA were more likely to be employed in occupations with both frequent exposures to infections and proximity to others [66]. There is also evidence that ethnic minority groups experience disproportionate rates of COVID-19 in some of these occupational groups, for example among healthcare workers [67].

We found some evidence that Asian individuals had a higher risk of severe infection, as marked by an increased risk of ITU admission and possibly death from COVID-19, even when common key confounders, such as a higher prevalence of diabetes and cardiovascular disease are taken into account. In this respect, our findings are consistent with national census data from the Office for National Statistics, and the most recent Intensive Care National Audit and Research Centre report which found over-representation of Asian ethnic groups to hospital and intensive care units in the UK [68,69]. However, we do note that few studies included in our meta-analysis directly considered multi-generational living, overcrowding or known recent contact with a confirmed positive case as confounders to risk our predefined outcomes. Only two studies considered the role of occupation in the context of infection; none considered it as a confounder for severe infection or death [32,57]. Future population studies investigating COVID-19 mortality must also try to ascertain what proportion of patients tested positive for SARS-CoV-2. Given the clustering nature of SARS-CoV-2 transmission, adjusting for testing positive would help to explain whether increased transmission between

Table 2

Quality assessment scores of the 50 included studies; description of studies by outcome, comorbidities considered and confounders adjusted for. References for the studies are those from Table 1.

Study first author	Quality assessment	Outcomes investigated for	Comorbidities	Confounders adjusted for (excluding ethnicity)
Ahmed	71%	Infection	Fluid/electrolyte disorder, renal Failure, alcohol abuse, anaemia, chronic pulmonary disease, depression, hypertensive renal disease without renal failure, hypertension (uncomplicated), obesity	Cough, fever, breathlessness, known contact with SARS-CoV-2
Argenziano	55%	ITU admission	Hypertension, diabetes, coronary artery disease, congestive heart failure, pulmonary disease, asthma, COPD, obstructive sleep apnoea, interstitial lung disease, renal disease, stroke, active cancer, transplant, rheumatological disease, HIV, viral hepatitis, cirrhosis, obesity (BMI >30)	No adjustment for confounders
Auld	56%	Death	Hypertension, diabetes, obesity, heart failure, coronary artery disease, chronic kidney disease, asthma, COPD	No adjustment for confounders
Azar	75%	ITU admission and death	Hypertension, diabetes, cardiovascular disease, cancer, depression, heart failure, COPD, Asthma	No adjustment for confounders
Bril	68%	Death	Hypertension, cardiac condition, diabetes, respiratory condition, immunosuppression	No adjustment for confounders
Caraballo	73%	Death	Heart failure, hypertension, COPD, coronary artery disease, renal disease	No adjustment for confounders
Chamie	73%	Infection	Chronic lung disease, heart disease, hypertension, diabetes, smoking	Sex, frontline worker status, household income, COVID-19 contact; referent ethnic group is: 'Non-Latino' rather than 'White'
Crouse	75%	Death	Obesity, hypertension, diabetes	Age, sex and comorbidities
Ebinger	75%	ITU admission	Obesity, hypertension, diabetes, previous myocardial infarction, COPD or asthma	Age, sex, hypertension, use of ACE inhibitors
Ellington	86%	Death	Diabetes, chronic lung disease, cardiovascular disease, chronic renal disease, chronic liver disease, immunocompromised, neurological disorder	No adjustment for confounders with regards to ethnicity
Garibaldi	100%	Death	Hypertension, coronary artery disease, heart failure, chronic kidney disease, diabetes mellitus, asthma, COPD, cancer, liver disease, immunosuppression, AIDS/ HIV, transplant	Age, sex, deprivation, comorbidities
Gold	77%	ITU admission and death	Diabetes, cardiovascular diseases, coronary artery disease, congestive heart failure, arrhythmia, chronic lung disease, asthma, COPD, severe obesity, immunocompromising conditions or therapies, end stage renal disease, Liver disease, hypertension, neurological disorder, chronic kidney disease	No adjustment for confounders
Gu	73%	Infection, ITU admission and death	Respiratory, cardiovascular disease, cancer, diabetes mellitus, kidney disease, liver disease, autoimmune disease	Age, sex, deprivation, comorbidities, BMI, smoking, alcohol for all three outcomes
Jun	77%	Death	Hypertension, diabetes, coronary artery disease, heart failure, atrial fibrillation, chronic kidney disease, COPD/asthma, obesity, cancer	Age, sex, comorbidities, initial oxygen saturations. However, only odds ratios presented; no absolute numbers
Khan	82%	ITU admission and death	Essential hypertension, diabetes mellitus, chronic lower respiratory diseases, chronic kidney disease, heart failure, ischaemic heart diseases, cerebrovascular diseases, nicotine dependence, alcohol related disorders	Propensity scoring rather than adjustment for confounders
Kim	86%	ITU admission and death	Hypertension, obesity, diabetes mellitus, asthma, COPD, coronary artery disease, heart failure, neurological disease, renal disease, immunosuppressive conditions, gastrointestinal or liver disease, haematological conditions, autoimmune/ rheumatological, pregnancy	Age, sex, comorbidities, smoking, medications
Levy	50%	Death	Coronary artery disease, diabetes, hypertension, heart failure, lung disease, kidney disease	No adjustment for confounders with regards to ethnicity
Lo	73%	Infection	Diabetes, lung disease, heart disease, kidney disease, cancer	Age, sex, BMI, smoking. To account for likelihood of receiving testing, authors used separate inverse probability weighting as a function of race/ethnicity and other factors such as age, symptom burden, COVID-19 exposure risk factors and socioeconomic status

(continued)

Table 2 (Continued)

Study first author	Quality assessment	Outcomes investigated for	Comorbidities	Confounders adjusted for (excluding ethnicity)
Lusignan	95%	Infection	Obesity, hypertension, chronic kidney disease, diabetes, chronic heart disease, chronic respiratory disease, cancer, immunocompromised	Age, sex, deprivation, household size, population density, comorbidity
Marcello	59%	Infection and death	Diabetes, hypertension, arrhythmia, cardiovascular disease, chronic heart disease, asthma, COPD, liver disease, chronic kidney disease, cancer, HIV	No adjustment for confounders
Marie Del Vale	100%	Death	Hypertension, obesity, diabetes, chronic kidney disease, cancer, atrial fibrillation, heart failure, asthma, COPD, sleep apnoea, smoking	Age, sex, comorbidity, smoking, blood tests, cytokine markers of inflammation
Martin	95%	Infection	Hypertension, diabetes mellitus, cardiovascular disease, respiratory disease, kidney disease	Age, sex, deprivation, household size, population density, comorbidity, NEWS-2 score on admission
McCarty	73%	ITU admission and death	Hypertension, hyperlipidaemia, diabetes mellitus, arrhythmia, coronary artery disease, thyroid disorder, renal disorder, heart failure, stroke, pulmonary disorder, smoking	Age, sex and comorbidity
Mendy	82%	ITU admission and death	obesity, diabetes, hypercholesterolaemia, asthma, COPD, chronic kidney disease, cardiovascular disease, cancer, osteoarthritis	Age, sex and smoking
Miles	68%	Death	No comorbidities	Age, sex, clinical frailty scale, testing positive for SARS-CoV-2 on nasopharyngeal swab, deprivation
Monteiro	82%	ITU admission	Obesity, hypertension, diabetes, COPD, coronary artery disease, cancer, asthma, atrial fibrillation, chronic kidney disease, transplant recipient	Age, sex, comorbidity, smoking
Narain	68%	Death	Asthma COPD, hypertension, diabetes mellitus, chronic kidney disease, cardiovascular disease, haemodialysis, cancer, autoimmune, liver disease, interstitial lung disease	Age, sex, comorbidities, laboratory parameters, disease severity score, treatment, insurance
Niedzwiedz	94%	Infection	Unknown – variables mentioned as 'number of long term conditions'	Age, sex, deprivation, comorbidities, healthcare worker and behaviour risk factors for infection
Williamson	95%	Death	Smoking, obesity (BMI), blood pressure, respiratory disease, asthma, chronic heart disease, diabetes, cancer, haematological malignancy, liver disease, stroke/dementia, other neurological, kidney disease, organ transplant, spleen diseases, rheumatoid/lupus/psoriasis, other immunosuppressive condition	Age, sex, deprivation, comorbidities,
Patel N	73%	ITU admission and death	Charlson comorbidity score	Age, sex, body mass index, glucose on admission, use of antiplatelet agents
Patel M	59%	ITU admission	Hypertension, diabetes mellitus, lung disease, heart disease, chronic kidney disease	No adjustment for comorbidities
Petrak	64%	Death	Diabetes, COPD bronchospastic illness, chronic cardiac or renal disease, immunodeficiency, neoplastic disease	Age, sex, comorbidity, timing of Tocilizumab; referent ethnic group was 'Non-white' rather than 'white'
Perez-Guzman	86%	Death	Hypertension, diabetes, ischaemic heart disease, chronic heart failure, stroke, chronic kidney disease, dementia, previous DVT/PE, atrial fibrillation, COPD, liver disease, malignancy, HIV/AIDS	Age, sex, comorbidity, deprivation, admission NEWS-2 score
Price-haywood	91%	Death	Obesity, asthma, COPD, diabetes mellitus, hypertension, heart failure, coronary artery disease, chronic kidney disease, solid organ transplant, liver disease, cancer, HIV	Age, sex, comorbidity, deprivation, obesity, admission observations and laboratory findings
Rajter	68%	Death	Diabetes, cardiovascular disease, pulmonary disease, BMI, renal disease, cancer, hypertension, neurological disease, HIV, thyroid disease	Age, sex, comorbidity, smoking, severe presentation, white cell count, lymphocyte count, ivermectin use
Ramaswamy	73%	Death	Smoker, diabetes mellitus, COPD, hypertension, heart disease, cancer, atrial fibrillation, stroke, anaemia, peripheral vascular disease	Age, sex, comorbidity, average modified early warning score (MEWS) during the inpatient stay, use of high-flow nasal cannula, maximum flow rate used on nasal cannula, highest level of care (ICU, Progressive, etc.), if mechanical ventilation was required, number of opioid doses, number of anti-diabetic drug doses, number of

(continued)

Table 2 (Continued)

Study first author	Quality assessment	Outcomes investigated for	Comorbidities	Confounders adjusted for (excluding ethnicity)
Rentsch	88%	Infection and ITU admission	Asthma, cancer, CKD, COPD, DM, HTN, Liver disease, vascular disease,	anticoagulant doses and number of antibiotic doses Age, sex, comorbidity, vital signs on admission, laboratory findings on admission, medications
Rosenberg	91%	Death	Obesity, cancer, kidney disease, lung disease, diabetes, hypertension, coronary heart disease, congestive heart failure, dementia	No adjustment for confounders with regards to ethnicity
Rozenfeld	73%	Infection	BMI, diabetes mellitus chronic kidney disease, HIV/AIDS, dementia, serious persistent mental illness, substance use disorder	Age, sex, deprivation, population density, comorbidity
Sakowicz	82%	Infection	Obesity, hypertension, diabetes mellitus, pulmonary disease, gestational diabetes mellitus	No adjustment for confounders
Sapey	90%	ITU admission and death	Count of morbidities used (multi-morbidity); hypertension, cerebrovascular disease, atrial fibrillation, ischaemic heart disease, angina, myocardial infarction, diabetes (type 1 and 2), asthma, COPD, interstitial lung disease, chronic kidney disease, any active malignancy, dementia (all types), obesity	Age, sex, deprivation, comorbidities
Somers	91%	Death	Hypertension, congestive heart failure, COPD, asthma, sleep apnoea, diabetes, chronic kidney disease, chronic liver disease, solid organ transplant	Age, sex and treatment with Tocilizumab
Tartof	91%	Death	Myocardial infarction, chronic heart failure, peripheral vascular disease, cerebrovascular disease, COPD, renal disease, cancer, immune disease, hyperlipidaemia, hypertension, asthma, organ transplant, diabetes	Age, sex, deprivation, comorbidity
Vahidy	88%	Infection	Hypertension, diabetes, obesity	Age, sex, deprivation, comorbidities, household size, population density
Velu	94%	Infection	No comorbidities listed	No adjustment for confounders
Wang A	64%	Death	Asthma, chronic kidney disease, cancer, COPD, HIV, obesity, hypertension, diabetes	No adjustment for confounders
Wang Z	64%	Infection and death	Diabetes mellitus, hypertension, asthma, chronic obstructive pulmonary COPD, HIV, obesity and cancer.	No adjustment for confounders with regards to ethnicity
Yehia	82%	Death	Asthma, cancer, chronic kidney disease, chronic liver disease, COPD, chronic heart failure, coronary artery disease, diabetes, hypertension, obesity, organ transplant	Age, sex, insurance, comorbidities, deprivation, site of care
Zakeri	64%	ITU admission and death	Asthma, COPD, coronary heart disease, hypertension, diabetes, chronic kidney disease, obesity	Age, sex, deprivation, comorbidity
Zimmerman	82%	Death	No comorbidities listed	Age, gender, body mass index

Table 3
Data syntheses for risk of SARS-CoV-2 infection by ethnic group.

	Studies	Pooled prevalence (95% CI)	I ²	Studies	Pooled unadjusted OR (95% CI)	I ²	Studies	Pooled RR (95% CI)	I ²
(1) Studies from pre-prints and peer-reviewed publications									
White	18	0.11 (0.11, 0.12)	99.9	14	Reference	95.3	5	Reference	67.3
Asian	14	0.16 (0.14, 0.19)	99.6	14	1.61 (1.23, 2.10)	95.6	8	1.50 (1.24, 1.83)	84.2
Black	17	0.26 (0.20, 0.32)	99.9	17	2.43 (1.93, 3.07)	94.5	3	1.77 (1.39, 2.25)	0
Hispanic	8	0.19 (0.08, 0.30)	99.9	8	2.58 (1.99, 3.35)	–	0	–	–
Mixed	1	0.33 (0.16, 0.56)	–	1	0.96 (0.36, 2.58)	–	0	–	–
Native American	2	0.03 (0.01, 0.04)	–	2	0.44 (0.26, 0.74)	0	1	0.64 (0.37, 1.11)	–
(2) Studies only from peer-reviews publications									
White	9	0.15 (0.11, 0.18)	99.8	8	Reference	80.9	4	Reference	74.8
Asian	8	0.21 (0.14, 0.29)	99.0	8	1.87 (1.42, 2.45)	91.1	5	1.51 (1.22, 1.88)	84.2
Black	8	0.22 (0.17, 0.28)	96.5	8	2.29 (1.60, 3.29)	94.8	0	–	–
Hispanic	2	0.08 (0.07, 0.09)	–	2	10.74 (0.14, 833.68)	–	0	–	–
Mixed	1	0.33 (0.16, 0.56)	–	1	0.96 (0.36, 2.58)	–	0	–	–
Native American	2	0.03 (0.01, 0.04)	–	2	0.44 (0.26, 0.74)	0	1	0.64 (0.37, 1.11)	–

certain communities would be the reason for higher death. Throughout the course of this analysis, we found three large studies of the UK population (one included and another two excluded due to likelihood of overlapping populations) which found a higher risk of death amongst Asian individuals compared to White individuals, but did not adjust for testing positive for SARS-CoV-2 [29,70,71].

Racism and structural discrimination may also contribute to an increased risk of worse clinical outcomes within ethnic minority communities [72,73]. These processes are complex and systemic, underpinned by unequal power relations and beliefs, and operating at individual, community, and organisational levels, resulting in stigmatisation, discrimination, and marginalisation of ethnic minorities

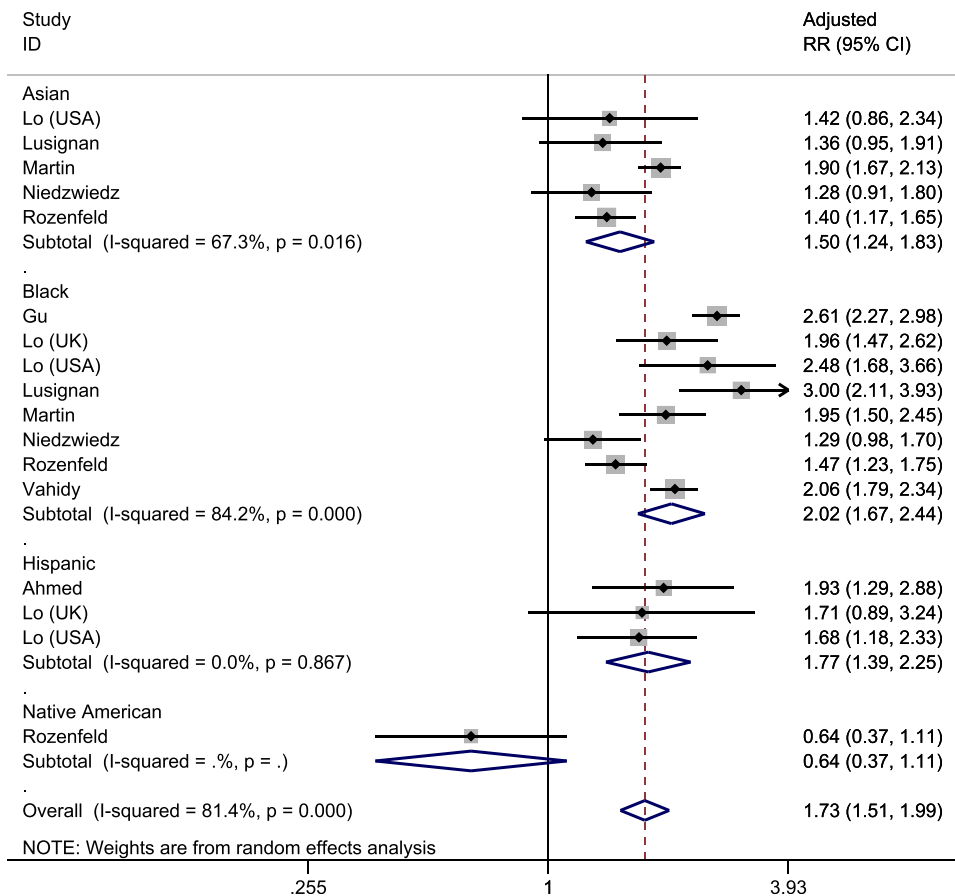


Fig. 3. Forrest plot of pooled adjusted risk of SARS-CoV-2 infection by ethnicity (Reference group: White).

Table 4

Data syntheses for risk of ITU admission amongst different ethnic groups.

Studies	Pooled prevalence (95% CI)	I ²	Studies	Pooled unadjusted OR (95% CI)	I ²	Studies	Pooled adjusted RR (95% CI)	I ²	
(1) Studies considering hospitalised populations only or reporting a subgroup analysis for hospitalised patients only									
White	14	0.28 (0.21, 0.34)	97.5	Reference		Reference			
Asian	7	0.27 (0.19, 0.35)	75.0	7	1.97 (1.25, 3.09)	70.1	2	1.97 (1.34, 2.89)	0
Black	15	0.33 (0.26, 0.41)	97.0	14	1.28 (1.06, 1.56)	62.8	4	1.10 (0.83, 1.44)	54.4
Hispanic	9	0.33 (0.22, 0.44)	95.9	9	1.06 (0.77, 1.44)	68.7	3	1.16 (0.86, 1.56)	52.0
Mixed	1	0.19 (0.14, 0.26)	–	1	1.99 (1.26, 3.16)	–	1	1.48 (0.98, 2.24)	–
(2) Studies considering inpatient/outpatient populations									
White	7	0.10 (0.07, 0.14)	98.2	Reference		Reference			
Asian	3	0.05 (0.00, 0.11)	0.0	3	0.96 (0.41, 2.21)	75.8	0	–	–
Black	7	0.19 (0.10, 0.28)	99.1	7	2.08 (1.39, 3.13)	89.3	3	1.90 (1.38, 2.61)	52.7
Hispanic	4	0.09 (0.02, 0.17)	95.0	4	1.10 (0.84, 1.45)	29.3	1	3.04 (1.47, 6.28)	–
Native American	0	–	–	1	1.65 (0.08, 34.79)	–	0	–	–
(3) Excluding studies from (1) which were not from peer-reviewed publications									
White	7	0.33 (0.22, 0.43)	96.9	Reference		Reference			
Asian	4	0.34 (0.12, 0.56)	84.1	4	1.31 (0.84, 2.05)	23.6	0	–	–
Black	8	0.33 (0.23, 0.43)	96.4	7	1.04 (0.90, 1.20)	7.0	2	1.00 (0.88, 1.13)	0
Hispanic	6	0.30 (0.18, 0.43)	96.8	6	0.89 (0.69, 1.14)	53.6	2	1.09 (0.83, 1.43)	55.7

[74]. Within a healthcare context, this contributes to inequities in the delivery of care, barriers to accessing care, loss of trust, and psychosocial stressors [75,76]. There is evidence to suggest that ethnic minorities and migrant groups have been less likely to implement public health measures, be tested, or seek care when experiencing symptoms due to such barriers and inequities in the availability and accessibility of care [77], underscoring critical healthcare disparities [3,5]. Large scale political-economic forces that have played out over generations have resulted in deep-seated social, economic and power inequities, which shape the distribution of risks and resources for health, resulting in social and spatial clustering of infectious diseases

amongst certain ethnic groups which have long been underserved [78]. Within the USA and the UK, COVID-19 has evolved from a pandemic to a syndemic - until policies and programmes are devised to address such disparities, we must be careful not to prematurely attribute worse clinical outcomes in ethnic minority groups to genetics [79].

We found that minority ethnic groups continue to be under-represented in research [80], which is likely to be exacerbated by the same barriers that contribute to disparities in access to care and health outcomes [73]. White individuals may be more likely to access testing for SARS-CoV-2 than those from ethnic minority

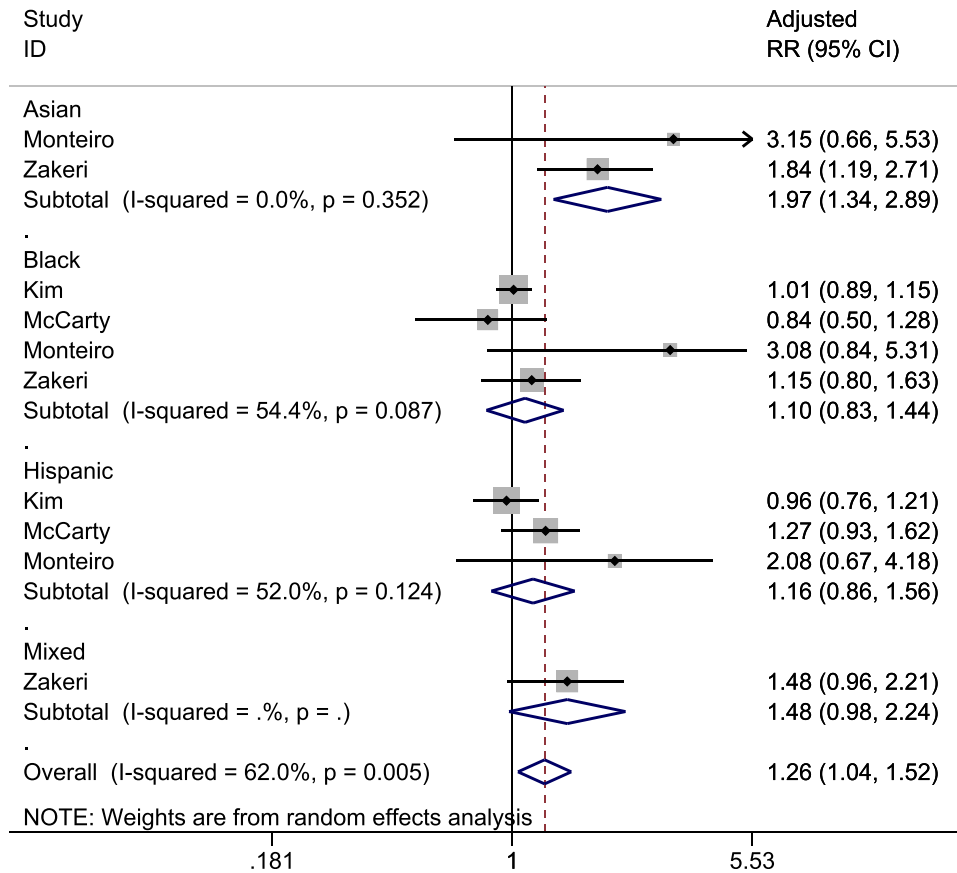


Fig. 4. Forrest plot of pooled adjusted risk of ITU admission by ethnicity (Reference group: White).

Table 5
Data syntheses for risk of mortality by different ethnic groups.

Studies	Pooled prevalence (95% CI)	I ²	Studies	Pooled unadjusted OR (95% CI)	I ²	Studies	Pooled adjusted HR/RR (95% CI)	I ²	
(1) Studies including suspected or confirmed COVID-19 patients only									
White	25	0.22 (0.18, 0.27)	99.2	Reference			Reference		
Asian	14	0.23 (0.15, 0.30)	97.5	14	0.81 (0.69, 0.95)	36.1	6	1.22 (0.99, 1.50)	61.8
Black	26	0.18 (0.14, 0.21)	97.3	25	0.88 (0.74, 1.04)	84.6	18	1.04 (0.93, 1.17)	44.8
Hispanic	11	0.10 (0.06, 0.14)	98.5	11	0.48 (0.36, 0.63)	65.1	6	0.98 (0.77, 1.24)	24.1
Mixed	2	0.18 (0.12, 0.23)	–	2	0.63 (0.21, 1.89)	76.3	2	1.13 (0.46, 2.77)	76.2
(2) Studies including suspected or confirmed COVID-19 patients plus studies of general populations									
White	–	–	–	Reference			Reference		
Asian	–	–	–	15	0.86 (0.73, 1.01)	60.9	8	1.33 (1.11, 1.60)	69.0
Black	–	–	–	26	0.90 (0.75, 1.07)	87.3	20	1.09 (0.95, 1.26)	68.8
Hispanic	–	–	–	11	0.48 (0.36, 0.63)	65.1	6	0.98 (0.77, 1.24)	24.1
Mixed	–	–	–	3	0.62 (0.37, 1.04)	67.8	4	1.19 (0.74, 1.91)	74.6
(3) Excluding studies from (1) which did not include hospitalised patients in outcome (i.e. only considered those who were discharged or died)									
White	21	0.22 (0.17, 0.26)	99.0	Reference			Reference		
Asian	12	0.21 (0.14, 0.28)	96.5	12	0.77 (0.63, 0.93)	32.8	5	1.18 (0.92, 1.51)	67.9
Black	21	0.17 (0.14, 0.21)	97.5	21	0.91 (0.74, 1.12)	84.9	13	1.04 (0.90, 1.20)	42.9
Hispanic	9	0.10 (0.06, 0.15)	98.8	9	0.52 (0.38, 0.71)	67.3	4	0.93 (0.69, 1.26)	8.1
Mixed	2	0.18 (0.12, 0.23)	–	2	0.63 (0.21, 1.89)	76.3	2	1.13 (0.46, 2.77)	76.2
(4) Excluding studies from (1) where the denominator was not of hospitalised patients									
White	18	0.28 (0.25, 0.31)	93.7	Reference			Reference		
Asian	11	0.27 (0.25, 0.30)	22.6	11	0.84 (0.73, 0.97)	17.5	5	1.27 (1.01, 1.58)	64.7
Black	18	0.21 (0.19, 0.24)	86.2	18	0.74 (0.64, 0.85)	63.4	13	1.00 (0.89, 1.11)	34.8
Hispanic	9	0.12 (0.05, 0.20)	96.6	9	0.47 (0.33, 0.66)	65.1	4	0.90 (0.60, 1.35)	52.4
Mixed	2	0.18 (0.12, 0.23)	–	2	0.63 (0.21, 1.89)	76.3	2	1.13 (0.46, 2.77)	76.2
(5) Excluding studies from (1) which were not from peer-reviewed publications									
White	11	0.21 (0.15, 0.28)	98.9	Reference			Reference		
Asian	6	0.16 (0.09, 0.23)	92.4	6	0.87 (0.51, 1.48)	69.0	2	1.19 (0.77, 1.83)	54.3
Black	12	0.17 (0.12, 0.23)	97.6	11	0.91 (0.74, 1.13)	69.3	8	1.05 (0.90, 1.22)	41.7
Hispanic	6	0.07 (0.04, 0.09)	94.4	6	0.49 (0.35, 0.68)	64.0	4	1.04 (0.87, 1.25)	0

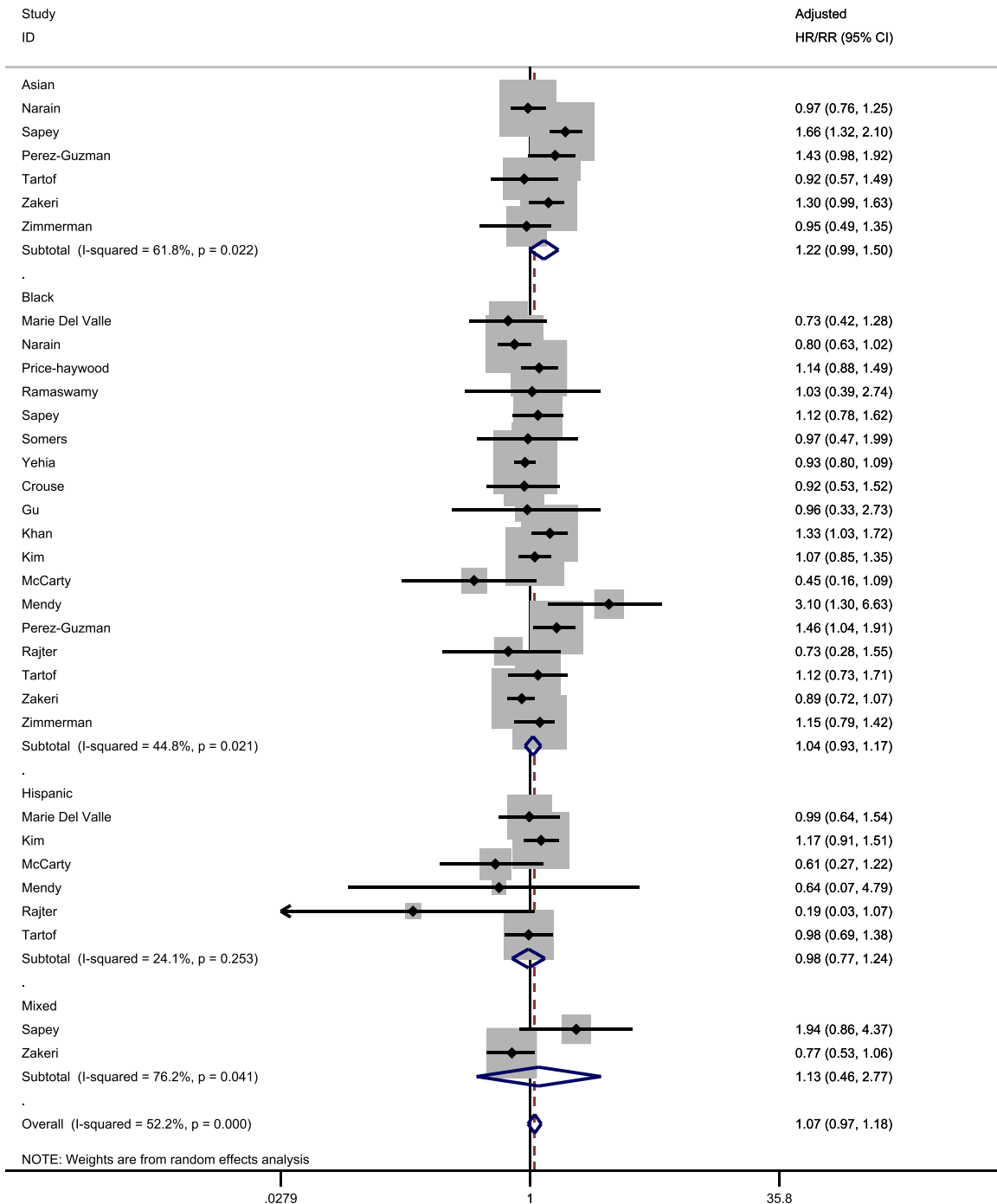


Fig. 5. Forrest plot of pooled adjusted risk of death by ethnicity (Reference group: White).

backgrounds; or a larger proportion of White individuals who were asymptomatic were tested compared to those from ethnic minority backgrounds. This in turn may have had influence on the relation between ethnicity and rates of infection, or severity of disease. We examined for temporal patterns in the data, but did not identify any differences. Amongst our pooled cohort, only 16% of patients were from non-White ethnic backgrounds, and a particularly small proportion were attributable to Hispanic and Native American groups. This impacted on our pooled adjusted risk with regards to ITU admission based on a small number of studies, thereby limiting generalisability in these outcomes from our data. This was avoidable; we excluded 147 studies because although they had raw data on ethnicity, none investigated this variable in relation to infection, ITU admission or

death and another third of included studies did not adjust for any confounding variables when investigating outcomes relating to ethnicity. As the COVID-19 pandemic continues to evolve, it is critically important that studies aim to present outcomes (infection, ITU admission and death) of patients with COVID-19 disaggregated by ethnicity, with data adjusted by key confounders.

Our study had several limitations. Half of our pooled analyses involved studies which had not been peer reviewed. However, inclusion of studies awaiting peer review helped to provide a broader view of the emerging literature, in a rapidly evolving field. In September 2020, four of the preprint publications had been published. We also adjusted for whether a paper was peer-reviewed or not in subsequent sensitivity analyses. Variations across papers in relation to

populations, setting, treatment context, and reporting of ethnicity and outcomes, resulted in high heterogeneity. However, this does not preclude pooling of data and is consistent with other meta-analyses on infection in diverse populations [82,83]. Instead, we explored heterogeneity through sensitivity analyses. The analyses provide an important visualisation of the data available, and highlight the heterogeneity across the research and the need to improve data collection and analysis, including greater standardisation in adjusted analyses.

Several studies may have overlapping populations [84]. For example, we found several studies from Mount Sinai investigating mortality from COVID-19; quite possibly from the same population [53,85–88]. We have minimised this error by excluding studies which were clearly done on the same database, though we urge greater transparency in reporting for future research.

We used broad categories of ethnicity. We did this in order to maximise inclusion within our pooled analyses – however, this will have affected precise estimates of risk for any further subgroup categorisations of ethnicity. For example, ‘Asian’ could be separated into ‘Bangladeshi’, ‘South Asian’ and ‘Chinese’, each of which may have a differing prognostic implication. Furthermore the terms race and ethnicity can be considered to be different; patients who are of ‘Black’ race may be of ‘Hispanic’ ethnicity. However, many studies did not define what they meant by ‘Asian’, race or ethnicity. Until a more standardised approach to the definition of ethnicity exists across studies, we believe our method to be a pragmatic approach for data synthesis.

Finally, all studies included were from the UK and USA. Whilst both these countries have ethnically diverse populations, generalisability of our findings to other countries should be cautioned, where management of patients (such as criteria for ITU admission) may be different. Further research should be undertaken in other country contexts and diverse income-level settings. In particular, a robust investigation of clinical outcomes in countries where those of White ethnicity do not make up the majority of the population would help to ascertain the role of any biological disposition to infection, severe disease or death.

In conclusion, we found clear evidence that patients of Black, Asian and Hispanic ethnicity are more likely to be infected with SARS-CoV-2, compared to those of White ethnicity, and a possible association of higher risk of ITU admission and death from COVID-19 in Asians, even when most confounders are adjusted for. Our findings should inform public health strategies to minimise exposure risk of SARS-CoV-2 in ethnic minority groups, by facilitating timely access to healthcare resources, and targeting the social determinants, structural racism, and occupational risk underlying inequities.

4.1. Data sharing statement

All data used in this manuscript can be found in the online versions of the studies that were accessed. Our own data synthesis of these manuscripts are available upon reasonable request.

Funding

NIHR and UKRI.

Author contribution

SS and DP wrote the first draft of the manuscript. SS, DP, CBN, CAM, JN, JSM and LBN performed the data collection. PD performed the database search. LJG and CRN performed the statistical analyses. KK, CAM, CRN, JN, KRA, LJG and LBN and MP reviewed and revised the manuscript. SS, DP and CRN have verified the underlying data.

Declaration of Competing Interest

KRA has served as a paid consultant, providing unrelated methodological advice, to; Abbvie, Amaris, Allergan, Astellas, AstraZeneca, Boehringer Ingelheim, Bristol-Meyers Squibb, Creativ-Ceutical, GSK, ICON/Oxford Outcomes, Ipsen, Janssen, Eli Lilly, Merck, NICE, Novartis, NovoNordisk, Pfizer, PRMA, Roche and Takeda, and has received research funding from Association of the British Pharmaceutical Industry (ABPI), European Federation of Pharmaceutical Industries & Associations (EFPIA), Pfizer, Sanofi and Swiss Precision Diagnostics. He is a Partner and Director of Visible Analytics Limited, a healthcare consultancy company. KK has received honoraria from AstraZeneca, Boehringer Ingelheim, Eli Lilly, Janssen, Merck Sharp & Dohme, Novartis, Novo Nordisk, Sanofi, Takeda, Servier and Pfizer, and research support from AstraZeneca, Boehringer Ingelheim, Eli Lilly, Merck Sharp & Dohme, Novartis, Novo Nordisk, Sanofi and Pfizer. KK is Director of the University of Leicester Centre for BME Health, Trustee of the South Asian Health Foundation, national NIHR ARC lead for Ethnicity and Diversity, Chair of the SAGE subgroup on Ethnicity and COVID and a member of Independent SAGE. MP reports grants and personal fees from Gilead Sciences and personal fees from QIAGEN, outside the submitted work. All other authors report no conflict of interest.

Funding

DP, SS and CAM are supported by NIHR Academic Clinical Fellowships. JSM is funded by an NIHR Clinical Lectureship in Older People and Complex Health Needs. CRN works for the Complex Reviews Support Unit which is funded by the NIHR (project number 14/178/29). KRA is supported by Health Data Research (HDR) UK, the UK National Institute for Health Research (NIHR) Applied Research Collaboration East Midlands (ARC EM), and as a NIHR Senior Investigator Emeritus (NF-SI-0512-10159). LBN receives funding from the Academy of Medical Sciences (SBF005\1047), the Medical Research Council/Economic and Social Research Council/Arts and Humanities Research Council (MR/T046732/1), and UKRI/MRC (MR/V027549/1). LJG receives funding from UK National Institute for Health Research (NIHR) and UKRI. KK, KM, MP and LG are supported by the National Institute for Health Research (NIHR) Applied Research Collaboration East Midlands (ARC EM). MP and KRA are members of the Health Data Research (HDR) UK COVID-19 Taskforce. MP is supported by a NIHR Development and Skills Enhancement Award and UKRI/MRC/NIHR (MR/V027549/1). KK and MP are supported by NIHR Leicester Biomedical Research Centre (BRC). The views expressed are those of the authors and not necessarily those of the NIHR, NHS or the Department of Health and Social Care.

Supplementary materials

Supplementary material associated with this article can be found in the online version at doi:[10.1016/j.eclinm.2020.100630](https://doi.org/10.1016/j.eclinm.2020.100630).

References

- [1] Johns Hopkins University of Medicine Coronavirus Resource Center. COVID-19 dashboard by the Center for Systems Science and Engineering (CSSE) at Johns Hopkins University (JHU). <https://coronavirus.jhu.edu/map.html> (accessed Sept 4, 2020).
- [2] Pan D, Sze S, Minhas JS, et al. The impact of ethnicity on clinical outcomes in COVID-19: a systematic review. *EClinicalMedicine* 2020;23:100404.
- [3] Williams D, Cooper L. COVID-19 and health equity – a new kind of ‘herd immunity’. *JAMA* 2020;323:2478–80.
- [4] Pareek M, Bangash MN, Pareek N, et al. Ethnicity and COVID-19: an urgent public health research priority. *Lancet* 2020;395:1421–2.
- [5] Yancy CW. COVID-19 and African Americans. *JAMA – J Am Med Assoc* 2020;323:1891–2.
- [6] LITCOVID. LitCovid – ethnicity search. <https://www.ncbi.nlm.nih.gov/research/coronavirus/docsum?text=Ethnicity> (accessed Sept 4, 2020).

- [7] PROSPERO. The impact of ethnicity on clinical outcomes in COVID-19: a systematic review. https://www.crd.york.ac.uk/prospero/display_record.php?RecordID=180654 (accessed Sept 4, 2020).
- [8] Aromataris E, Munn Z. JBI manual for evidence synthesis. DOI: 10.46658/JBIMES-20-01.
- [9] Egger M, Smith GD, Schneider M, Minder C. Bias in meta-analysis detected by a simple, graphical test. *Br Med J* 1997;315:629.
- [10] Higgins J, Thomas J. The Cochrane handbook for systematic reviews of interventions. 6th ed. 2019.
- [11] Jackson D, Bowden J, Baker R. How does the DerSimonian and Laird procedure for random effects meta-analysis compare with its more efficient but harder to compute counterparts? *J Stat Plan Inference* 2010;140:961–70.
- [12] Ahmed SM, Shah RU, Bale M, et al. Comprehensive testing highlights racial, ethnic, and age disparities in the COVID-19 outbreak. *medRxiv* 2020.05.05.20092031.
- [13] Argenzian MG, Bruc SL, Slate CL, et al. Characterization and clinical course of 1000 patients with coronavirus disease 2019 in New York: retrospective case series. *BMJ* 2020;369. doi: 10.1136/bmj.m1996.
- [14] Caraballo C, McCullough M, Fuery MA, et al. COVID-19 infections and outcomes in a live registry of heart failure patients across an integrated health care system. *PLoS ONE* 2020;15:e0238829.
- [15] Gold JAW, Wong KK, Szablewski CM, et al. Characteristics and clinical outcomes of adult patients hospitalized with COVID-19 – Georgia, March 2020. *Morb Mortal Wkly Rpt* 2020;69:1–6.
- [16] Gu T, Mack J, Salvatore M, et al. COVID-19 outcomes, risk factors and associations by race: a comprehensive analysis using electronic health records data in Michigan Medicine. *medRxiv* 2020. doi: 10.1101/2020.06.16.20133140.
- [17] Jun T, Nirenberg S, Kovatch P, Huang K. Sex-specificity of mortality risk factors among hospitalized COVID-19 patients in New York City: prospective cohort study. *medRxiv* 2020.07.29.20164640.
- [18] Khan A, Chatterjee A, Singh S. Comorbidities and disparities in outcomes of COVID-19 among black and white patients. *medRxiv* 2020. doi: 10.1101/2020.05.10.20090167.
- [19] Kim L, Garg S, O'Halloran A, et al. Risk factors for intensive care unit admission and in-hospital mortality among hospitalized adults identified through the U.S. coronavirus disease 2019 (COVID-19)-associated hospitalization surveillance network (COVID-NET). *Clin Infect Dis* 2020.
- [20] Levy TJ, Richardson S, Coppa K, et al. Development and validation of a survival calculator for hospitalized patients with COVID-19. *medRxiv Prepr Serv Heal Sci* 2020. doi: 10.1101/2020.04.22.20075416.
- [21] Lo C-H, Nguyen LH, Drew DA, et al. Racial and ethnic determinants of Covid-19 risk. *medRxiv* 2020.06.18.20134742.
- [22] de Lusignan S, Dorward J, Correa A, et al. Risk factors for SARS-CoV-2 among patients in the Oxford Royal College of general practitioners research and surveillance centre primary care network: a cross-sectional study. *Lancet Infect Dis* 2020;20:1034–42.
- [23] Marcello R, Dolle J, Grami S, et al. Characteristics and outcomes of COVID-19 patients in New York City's Public hospital system. *medRxiv* 2020. doi: 10.1101/2020.05.29.20086645.
- [24] Auld SC, Caridi-Scheible M, Blum JM, et al. ICU and ventilator mortality among critically ill adults with coronavirus disease 2019. *Crit Care Med* 2020;1–6.
- [25] Del Valle DM, Kim-Schulze S, Huang H-H, et al. An inflammatory cytokine signature predicts COVID-19 severity and survival. *Nat Med* 2020;1–8.
- [26] Martin CA, Jenkins DR, Minhas JS, et al. Socio-demographic heterogeneity in the prevalence of COVID-19 during lockdown is associated with ethnicity and household size: results from an observational cohort study. *EclinicalMedicine* 2020;25:100466.
- [27] McCarty T, Hathorn K, Redd W, et al. How do presenting symptoms and outcomes differ by race/ethnicity among hospitalised patients with COVID-19 infection? Experience in Massachusetts. *Clin Infect Dis* 2020. doi: 10.1093/cid/ciaa1245.
- [28] Mendy A, Apewokin S, Wells AA, Morrow AL. Factors associated with hospitalisation and disease severity in a racially and ethnically diverse population of COVID-19 patients. *medRxiv* 2020.
- [29] Miles A, Webb TE, McLoughlin BC, et al. Outcomes from COVID-19 across the range of frailty: excess mortality in fitter older people. *Eur Geriatr Med* 2020;85:1–5.
- [30] Costa Monteiro AC, Suri R, Emeruwa IO, et al. Obesity and smoking as risk factors for invasive mechanical ventilation in COVID-19: a retrospective, observational cohort study. *medRxiv Prepr Serv Heal Sci* 2020. doi: 10.1101/2020.08.12.20173849.
- [31] Narain S, Stefanov D, Chau A, et al. Comparative survival analysis of immunomodulatory therapy for COVID-19 'Cytokine Storm': a retrospective observational cohort study. *medRxiv* 2020. doi: 10.1101/2020.06.16.20126714.
- [32] Niedzwiedz CL, O'Donnell CA, Jani BD, et al. Ethnic and socioeconomic differences in SARS-CoV-2 infection: prospective cohort study using UK Biobank. *BMC Med* 2020;18:1–14.
- [33] Williamson EJ, Walker AJ, Bhaskaran K, et al. Factors associated with COVID-19-related death using OpenSAFELY. *Nature* 2020;584:430–6.
- [34] Patel NG, Bhasin A, Feinglass JM, et al. Clinical outcomes of hospitalized patients with COVID-19 on therapeutic anticoagulants. *medRxiv* 2020;1–30.
- [35] Azar K, Shen Z, Romanelli R, et al. Disparities in Outcomes among COVID-19 patients in a large health care system in California. *Health Aff* 2020;39. doi: 10.1377/hlthaff.2020.00598.
- [36] Patel M, Gangemi A, Marron R, et al. Retrospective analysis of high flow nasal therapy in COVID-19-related moderate-to-severe hypoxaemic respiratory failure. *BMJ Open Respir Res* 2020;7:1–11.
- [37] Petrak RM, Skorodin NC, Van Hise NW, et al. Tocilizumab as a therapeutic agent for critically ill patients infected with SARS-CoV-2. *Clin Transl Sci* 2020. doi: 10.1111/cts.12894.
- [38] Perez-Guzman PN, Daunt A, Mukherjee S, et al. Clinical characteristics and predictors of outcomes of hospitalized patients with coronavirus disease 2019 in a multiethnic London national health service trust: a retrospective cohort study. *Clin Infect Dis* 2020;1–11.
- [39] Price-Haywood EG, Price-Haywood EG, Burton J, Fort D, Seoane L. Hospitalization and mortality among black patients and white patients with Covid-19. *N Engl J Med* 2020;382:2534–43.
- [40] Rajter JC, Sherman MS, Fatteh N, Vogel F, Sacks J, Rajter J-J. ICON (Ivermectin in Covid Nineteen) study: use of ivermectin is associated with lower mortality in hospitalised patients with COVID-19. *medRxiv* 2020.06.06.20124461.
- [41] Ramaswamy M, Mannam P, Comer R, Sinclair E, McQuaid DB, Schmidt ML. Off-label real world experience using tocilizumab for patients hospitalized with COVID-19 disease in a regional community health system: a case-control study. *medRxiv* 2020.05.14.20099234.
- [42] Rentsch C.T., Kidwai-khan F., Tate J.P., et al. COVID-19 testing, hospital admission and intensive care among 2,026,277 United States veterans aged 54-75 years. 2020;:1–32.
- [43] Rosenberg ES, Dufort EM, Udo T, et al. Association of treatment with hydroxychloroquine or azithromycin with in-hospital mortality in patients with COVID-19 in New York state. *JAMA – J Am Med Assoc* 2020;323:2493–502.
- [44] Rozenfeld Y, Beam J, Maier H, et al. A model of disparities: risk factors associated with COVID-19 infection. *Int J Equity Health* 2020;19. doi: 10.1186/s12939-020-01242-z.
- [45] Sakowicz A, Ayala A, Ukeje C, Witting C, William A, Miller E. Risk factors for severe acute respiratory syndrome. *Am J Obstet Gynaecol MFM* 2020.
- [46] Brill SE, Jarvis HC, Ozcan E, et al. COVID-19: a retrospective cohort study with focus on the over-80s and hospital-onset disease. *BMC Med* 2020;18:1–9.
- [47] Sapely E, Gallier S, Mainey C, et al. Ethnicity and risk of death in patients hospitalised for COVID-19 infection in the UK: an observational cohort study in an urban catchment area. *BMJ Open Respir Res* 2020;7:1–11.
- [48] Somers E., Eschenauer G., Troost J., et al. Tocilizumab for treatment of mechanically ventilated patients with COVID-19. *Clin Infect Dis* DOI:10.1093/cid/ciaa839.
- [49] Tartof S, Qian L, Wei R, et al. Obesity and mortality among patients diagnosed with COVID-19: results from an integrated healthcare organisation. *Ann Intern Med* 2020. doi: 10.7326/M20-3742.
- [50] Vahidy FS, Nicolas JC, Meeks JR, et al. Racial and ethnic disparities in SARS-CoV-2 pandemic: analysis of a COVID-19 observational registry for a diverse US metropolitan population. *BMJ Open* 2020;10. doi: 10.1136/bmjopen-2020-039849.
- [51] Velu P, Craney A, Ruggiero P, et al. Rapid implementation of SARS-CoV-2 emergency use authorization RT-PCR 2 testing and experience at an academic medical institution. *medRxiv* 2020. doi: 10.1101/2020.06.05.20109637.
- [52] Wang A-L, Zhong X, Hurd Y. Comorbidity and sociodemographic determinants in COVID-19 mortality in an US Urban healthcare system. *medRxiv* 2020.06.11.20128926.
- [53] Wang Z, Zheutlin AB, Kao Y-H, et al. Analysis of hospitalized COVID-19 patients in the Mount Sinai Health system using electronic medical records (EMR) reveals important prognostic factors for improved clinical outcomes. *medRxiv* 2020.04.28.20075788.
- [54] Yehia BR, Winegar A, Fogel R, et al. Association of race with mortality among patients hospitalized with coronavirus disease 2019 (COVID-19) at 92 US hospitals. *JAMA Netw open* 2020;3:e2018039.
- [55] Zakeri R., Bendayan R., Ashworth M., et al. A case-control and cohort study to determine the relationship between ethnic background and severe COVID-19. 2020;:0–2.
- [56] Zimmerman P, Stroever S, T B, et al. Mortality associated with intubation and mechanical ventilation in patients with COVID-19. *medRxiv* 2020.
- [57] Chamie G, Marquez C, Crawford E, et al. Community transmission of severe acute respiratory syndrome coronavirus 2 disproportionately affects the Latinx population during shelter-in-place in San Francisco. *Clin Infect Dis* 2020;1–9.
- [58] Crouse A, Grimes T, Li P, Might M, Ovalle F, Shalev A. Metformin use is associated with reduced mortality in a diverse population with COVID-19 and diabetes. *medRxiv Prepr Serv Heal Sci* 2020. doi: 10.1101/2020.07.29.20164020.
- [59] Ebinger JE, Achamallah N, Ji H, et al. Pre-existing traits associated with Covid-19 illness severity. *PLoS ONE* 2020;15:1–16.
- [60] Ellington S, Strid P, Tong V, et al. Characteristics of women of reproductive age with laboratory confirmed SARS-CoV-2 infection by pregnancy status – United States, January 22–June 7, 2020. *Centers Dis Control Prev Morb Mortal Wkly Rep* 2020;69.
- [61] Garibaldi B, Fiksel J, Muschelli J, et al. Patient trajectories among persons hospitalized for COVID-19 – a cohort study. *Ann Intern Med* 2020. doi: 10.7326/M20-3905.
- [62] Cevik M, Marcus J, Buckee C, Smith T. SARS-CoV-2 transmission dynamics should inform policy. *Clin Infect Dis* 2020.
- [63] Office for National Statistics United Kingdom Government. Coronavirus (COVID-19) related deaths by occupation, England and Wales: deaths registered up to and including 20 April 2020. 2020. <https://www.ons.gov.uk/peoplepopulationandcommunity/healthandsocialcare/causesofdeath/bulletins/coronavirus-covid-19-relateddeathsbyoccupationenglandandwales/deathsregistereduptoandincluding20april2020> (accessed Sept 4, 2020).
- [64] Jing Q-L, Liu M-J, Zhang Z-B, et al. Household secondary attack rate of COVID-19 and associated determinants in Guangzhou, China: a retrospective cohort study. *Lancet Infect Dis* 2020;3099:1–10.

- [65] Iacobucci G. Covid-19: deprived areas have the highest death rates in England and Wales. *BMJ* 2020;369:m1810.
- [66] Hawkins D. Differential occupational risk for COVID-19 and other infection exposure according to race and ethnicity. *Am J Ind Med* 2020;63:817–20.
- [67] Nguyen LH, Drew DA, Graham MS, et al. Risk of COVID-19 among front-line health-care workers and the general community: a prospective cohort study. *Lancet Public Heal* 2020. doi: [10.1016/s2468-2667\(20\)30164-x](https://doi.org/10.1016/s2468-2667(20)30164-x).
- [68] Intensive Care National Audit and Research. ICNARC report on COVID-19 in critical care : England, Wales and Northern Ireland. 2020;: 1–19.
- [69] Office for National Statistics United Kingdom Government. Coronavirus (COVID-19) related deaths by ethnic group, England and Wales: 2 March 2020 to 15 May 2020. <https://www.ons.gov.uk/peoplepopulationandcommunity/birthsdeathsandmarriages/deaths/articles/coronaviruscovid19relateddeathsbyethnicgroupenglandandwales/2march2020to15may2020>.
- [70] Holman N, Knighton P, Kar P, et al. Risk factors for COVID-19-related mortality in people with type 1 and type 2 diabetes in England: a population-based cohort study. *Lancet Diabetes Endocrinol* 2020;8:823–33.
- [71] Barron E, Bakhai C, Kar P, et al. Associations of type 1 and type 2 diabetes with COVID-19-related mortality in England: a whole-population study. *Lancet Diab Endocrinol* 2020;8:813–22.
- [72] Egede LE, Walker RJ. Structural racism, social risk factors and COVID-19 – a dangerous convergence for black Americans. *N Engl J Med* 2020. doi: [10.1056/NEJMp2023616](https://doi.org/10.1056/NEJMp2023616).
- [73] Hooper M, Napoles A, Perez-Stable E. COVID-19 and racial/ethnic disparities. *JAMA* 2020;323:2466–7.
- [74] Szczepura A. Access to health care for ethnic minority populations. *Postgrad Med J* 2005;81:141–7.
- [75] Doctors of the World. A rapid needs assessment of excluded people in England during the 2020 COVID-19 pandemic. 2020.
- [76] Caldwell JG, Price EV, Schroeter AL, Fletcher GF. Aortic regurgitation in the Tuskegee study of untreated syphilis. *J Chronic Dis* 1973;26:187–94.
- [77] Devakumar D, Shannon G, Bhopal SS, Abubakar I. Racism and discrimination in COVID-19 responses. *Lancet* 2020;395:1194.
- [78] Gravlee CC. Systemic racism, chronic health inequities, and COVID-19: a syndemic in the making? *Am J Hum Biol* 2020;32:1–8.
- [79] Horton R. Offline: COVID-19 is not a pandemic. *Lancet* 2020;396:874.
- [80] Chastain D, Osae S, Henao-Martinez A, Franco-Paredes C, Chastain J, Young H. Racial disproportionality in COVID clinical trials. *N Engl J Med* 2020;383. doi: [10.1056/NEJMp2021971](https://doi.org/10.1056/NEJMp2021971).
- [81] Caraballo C, McCullough M, Fuery MA, et al. COVID-19 infections and outcomes in a live registry of heart failure patients across an integrated healthcare system. *medRxiv* 2020.
- [82] Nellums LB, Thompson H, Holmes A, et al. Antimicrobial resistance among migrants in Europe: a systematic review and meta-analysis. *Lancet Infect Dis* 2018;18:796–811.
- [83] Aldridge RW, Nellums LB, Bartlett S, et al. Global patterns of mortality in international migrants: a systematic review and meta-analysis. *Lancet* 2018;392:2553–66.
- [84] Senn SJ. Overstating the evidence - Double counting in meta-analysis and related problems. *BMC Med Res Methodol* 2009;9:1–7.
- [85] Sigel K, Swartz T, Golden E, et al. Coronavirus 2019 and people living with human immunodeficiency virus: outcomes for hospitalized patients in New York City. *Clin Infect Dis* 2020;10029:1–6.
- [86] Malle L, Gao C, Bouvier N, Percha B, Bogunovic D. COVID-19 hospitalization is more frequent and severe in down syndrome and affects patients a decade younger. *medRxiv* 2020. doi: [10.1101/2020.05.26.20112748](https://doi.org/10.1101/2020.05.26.20112748).
- [87] Wang B, Van Oekelen O, Mouhieddine TH, et al. A tertiary center experience of multiple myeloma patients with COVID-19: lessons learned and the path forward. *J Hematol Oncol* 2020;13:1–12.
- [88] Paranjpe I, Russak AJ, De Freitas JK, et al. Clinical characteristics of hospitalized Covid-19 patients in New York City. *medRxiv* 2020:1–20.