

RESEARCH ARTICLE

COVID-19 excess mortality among long-term care residents in Ontario, Canada

Noori Akhtar-Danesh^{1,2*}, Andrea Baumann^{3‡}, Mary Crea-Arsenio^{3‡},
Valentina Antonipillai³

1 School of Nursing, McMaster University, Hamilton, Ontario, Canada, 2 Department of Health Research Methods, Evidence, and Impact, McMaster University, Hamilton, Ontario, Canada, 3 Global Health, McMaster University, Hamilton, Ontario, Canada

‡ AB and MCA contributed equally to this work as Joint Senior Authors. NAD is the Senior Lead Author.

* daneshn@mcmaster.ca

**OPEN ACCESS**

Citation: Akhtar-Danesh N, Baumann A, Crea-Arsenio M, Antonipillai V (2022) COVID-19 excess mortality among long-term care residents in Ontario, Canada. PLoS ONE 17(1): e0262807. <https://doi.org/10.1371/journal.pone.0262807>

Editor: Gabriel Hoh Teck Ling, Universiti Teknologi Malaysia - Main Campus Skudai: Universiti Teknologi Malaysia, MALAYSIA

Received: July 29, 2021

Accepted: January 5, 2022

Published: January 20, 2022

Copyright: © 2022 Akhtar-Danesh et al. This is an open access article distributed under the terms of the [Creative Commons Attribution License](https://creativecommons.org/licenses/by/4.0/), which permits unrestricted use, distribution, and reproduction in any medium, provided the original author and source are credited.

Data Availability Statement: The authors cannot disclose individual level data and have included group level data in the paper and tables. This is part of the agreement with ICES. The dataset from this study is held securely in coded form at ICES. While data sharing agreements prohibit ICES from making the dataset publicly available, access may be granted to those who meet pre-specified criteria for confidential access, available at <https://www.ices.on.ca/>. The full dataset creation plan and underlying analytic code are available from Open Science Framework (DOI [10.17605/OSF.IO/](https://doi.org/10.17605/OSF.IO/)

Abstract

The coronavirus disease 2019 (COVID-19) has had devastating consequences worldwide, including a spike in global mortality. Residents of long-term care homes have been disproportionately affected. We conducted a retrospective cohort study to determine the scale of pandemic-related deaths of long-term care residents in the province of Ontario, Canada, and to estimate excess mortality due to a positive COVID-19 test adjusted for demographics and regional variations. Crude mortality rates for 2019 and 2020 were compared, as were predictors of mortality among residents with positive and negative tests from March 2020 to December 2020. We found the crude mortality rates were higher from April 2020 to June 2020 and from November 2020 to December 2020, corresponding to Wave 1 and Wave 2 of the pandemic in Ontario. There were also substantial increases in mortality among residents with a positive COVID-19 test. The significant differences in excess mortality observed in relation to long-term care home ownership category and geographic region may indicate gaps in the healthcare system that warrant attention from policymakers. Further investigation is needed to identify the most relevant factors in explaining these differences.

Introduction

The coronavirus disease 2019 (COVID-19) has had devastating consequences worldwide, including a spike in global mortality. One group that has been disproportionately affected are residents of long-term care (LTC) homes. Compared with other Organisation for Economic Co-operation and Development countries, Canada had a relatively low overall COVID-19 mortality rate but the highest proportion of LTC deaths. Residents of LTC homes in Canada represented 81% of all reported COVID-19 deaths compared with an average of 38% in other countries [1].

Globally, countries have reported a significant number of COVID-related deaths in LTC settings. In Sweden, more than 50% of all deaths occurred in LTC homes, the highest among the Scandinavian countries [2]. In Italy, municipalities with care homes had higher rates of excess deaths related to COVID compared to those without a care home [3]. Excess deaths

ZCNKD). The data underlying the results presented in the study are also available from the Institute for Clinical Evaluative Sciences (ICES) who can be contacted at <https://www.ices.on.ca/About-ICES/ICES-Contacts-and-Sites/contact>.

Funding: This study was funded by a Canadian Institutes of Health Research (CIHR) Operating Grant - COVID-19 Rapid Research (Application # 447846). The funder website is <https://cihr-irsc.gc.ca/e/193.html>. The funders had no role in study design, data collection and analysis, decision to publish, or preparation of the manuscript.

Competing interests: The authors have declared that no competing interests exist.

were estimated 7% in all care homes in England during the first 23 weeks of COVID-19; of those, 65% of all deaths were attributable to the virus [4]. Similarly, in Belgium residents of care homes were 130 times more likely to die from a COVID-19 infection than the rest of the population [5]. Finally, in a recent Canadian study of excess mortality, it was found that COVID-19 deaths in long-term care were approximately 50% greater than reported COVID-19 fatalities in Italy, Spain, the United Kingdom and United States [4]. Across Canadian regions, the percentage of COVID-19 fatalities reported in LTC has remained close to double the OECD average throughout the COVID-19 pandemic [4].

In the light of the impact of the pandemic on residents of long-term care homes, further investigation into excess mortality is required. Mortality is one indicator of how sectors such as LTC were able to protect their residents during the most severe stages of the pandemic. Using resident-level data from linked health administrative databases, this paper provides an analysis of the scale of COVID-19 deaths among LTC residents to further assess the extent of excess mortality from infection. The paper focuses on Canada's most populous province of Ontario and one of the hardest hit during the pandemic [6].

There are 626 LTC homes in Ontario with approximately 78,000 residents at any one time [1]. Ownership, operation, and providers differ. Currently, 57% of the homes are for-profit and are privately owned, 27% are not-for-profit, and 16% are public and operated by municipalities [7]. From January 15, 2020, to February 28, 2021, there were 14,960 cases of COVID-19 among LTC residents in Ontario and 3871 deaths [8]. This represents 64.5% of all pandemic-related deaths in the province [9].

The incidence rate for COVID-19 deaths among LTC residents in Ontario was 13 times higher than the rate for adults 69 years of age or older living in the community [10]. Evidence demonstrates that for-profit LTC homes have lower levels of staffing, more complaints from residents and family, more acute care hospital admissions, and higher mortality rates [11, 12]. Lack of preparation, shortage of staff, and overcrowding have contributed to excess mortality in the LTC sector, and mortality increases with age and pre-existing medical conditions [13–16]. Furthermore, personal protective equipment, reduced use of part-time staff, and early implementation of infection protocols have been linked to lower rates of mortality in nursing homes [17].

We conducted a retrospective cohort study with the aim of understanding the scale of COVID-19 deaths among LTC residents in Ontario and estimating excess mortality due to a positive COVID-19 test adjusted for demographics and regional variations. For the purposes of the study, excess mortality was defined as an estimate of the additional number of deaths within 30 days of a COVID-19 test compared to the expected number of deaths [18]. It is a measure encompasses all causes of death, directly or indirectly associated with a positive COVID-19 test, and provides a metric of the overall mortality impact of the pandemic [19]. We found significant differences in excess mortality with regard to ownership category and geographic region of LTC homes. This may indicate gaps in the healthcare system that warrant attention from policymakers.

Materials and methods

Data sources

The study focused on LTC residents in Ontario from January 2019 to December 2020 and used population-based health administrative data sets from the Institute for Clinical Evaluative Sciences (ICES) and the Resident Assessment Instrument—Minimum Data Set (RAI-MDS) 2.0. The RAI-MDS contains information on resident clinical, functional, and psychosocial characteristics. The study obtained LTC home admission and discharge dates from the Continuing Care Reporting System (CCRS). COVID-19 testing and positivity data were obtained

from linking these health administrative databases to the Ontario Laboratories Information System (OLIS), which acquires SARS-CoV-2 infection test data from hospitals, commercial laboratories, provincial public health laboratory and COVID-19 assessment centers. Mortality and demographic data were obtained through the Registered Persons Database (RPDB). The data sets were linked via unique encoded identifiers.

The age groups for residents were coded as 65–69, 70–74, 75–79, 80–84, and ≥ 85 years. The following variables were included in the analysis for each resident: result of last COVID-19 test (positive or negative from March 2020); region of Ontario (Central, Southwest, East, North); income quintile based on postal code of the LTC home; frailty index (classified as robust, pre-frail, frail); ownership category of LTC home (municipal, non-profit, private); and Changes in Health, End-stage disease Symptoms and Signs Scales (CHES) comorbidity score [20, 21]. The income quintile was coded as 1 (lowest income level) to 5 (highest income level). The CHES score varies from 0 (no instability in health) to 5 (high unstable health).

The study was conducted in accordance with the Declaration of Helsinki. The study was approved by authors' institutional ethics board. ICES is a prescribed entity under section 45 of Ontario's Personal Health Information Protection Act. Section 45 authorizes ICES to collect personal health information, without consent, for the purpose of analysis or compiling statistical information with respect to the management of, evaluation or monitoring of, the allocation of resources to or planning for all or part of the health system. Projects conducted under section 45, by definition, do not require informed consent. This project was conducted under section 45 and approved by ICES' Privacy and Legal Office.

Statistical analysis

Summary statistics were reported as mean and standard deviation (SD) for continuous variables and as frequency and percentage for categorical variables and were compared using t-tests and chi-squared tests, respectively. We compared crude mortality rate per 1000 person-months between 2019 and 2020. We first calculated the crude mortality rate per month from January 2019 to December 2020, where rate for each month in 2020 can be compared with the rate of same month in 2019. A flexible parametric model [22, 23] was used to estimate mortality rates based on COVID-19 test results from March 2020 to December 2020. The model provides smooth estimates of survival and mortality using restricted cubic splines on the log cumulative excess hazard scale. Compared to standard survival models such as Cox regression and parametric survival models, it adopts a piecewise approach and is more flexible in mimicking the actual trends in mortality (hazard rate [HR]) and survival patterns [24].

We fitted the model by incorporating age group, sex, region, income quintile, frailty index, CHES score, ownership category, and interaction term between each two variables into a multiple statistical model using a forward approach. We used the likelihood ratio test to compare different models toward reaching a final model. All variables included in the final model were statistically significant. Statistical significance was evaluated with 2-sided p-values at a type I error rate of 0.05. Based on the final model, mortality was estimated for residents with positive or negative COVID-19 tests per 1000 person-days for over 30 days after each test while adjusting for the other variables in the model. The flexible parametric model was fitted using the freely available `stpm2` program for Stata package [22]. All statistical analyses were conducted using Stata/MP 15.1 (Stata Corporation, College Station, TX).

Results

The study included a total of 120,286 residents across the two years. In 2019 there were 102,897 LTC residents and in 2020 there were 89,034 LTC residents, of which 71,645 were

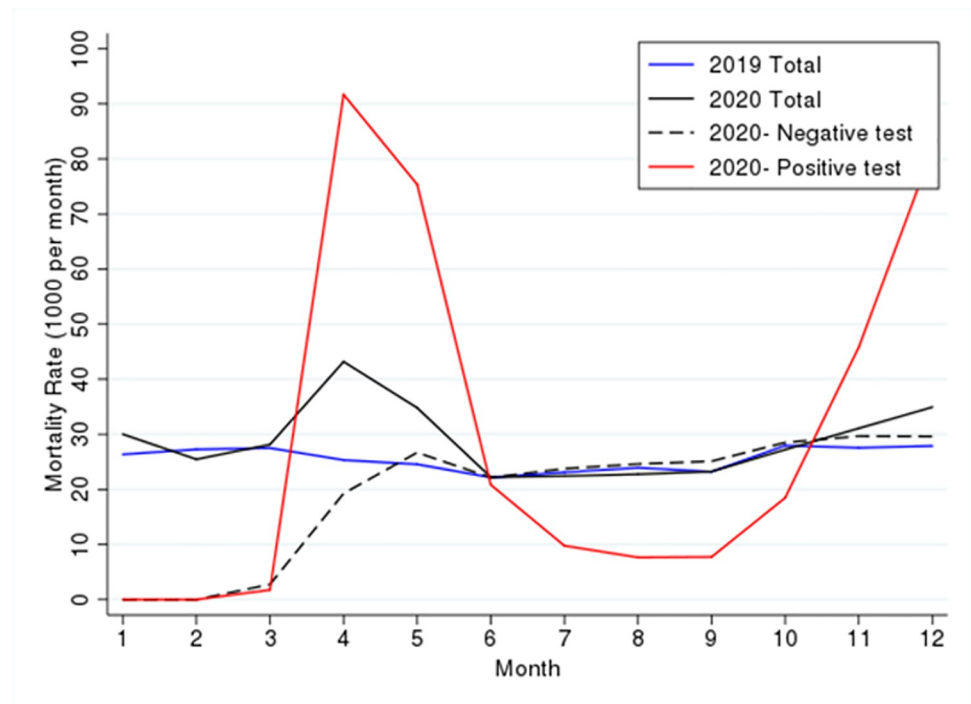


Fig 1. Crude mortality rate based on year and COVID-19 test result.

<https://doi.org/10.1371/journal.pone.0262807.g001>

also residents in 2019. The crude mortality rates are depicted in Fig 1; compared to the same periods in 2019, crude mortality rate were higher from April 2020 to June 2020 and from November 2020 to December 2020, corresponding to Wave 1 and Wave 2 of the pandemic in Ontario.

Comparison of mortality rates from March 2020 to December 2020 between residents with positive and negative COVID-19 tests showed the rates for residents with negative tests were at the same level as in 2019, but there was significant variation for those with positive tests. The mortality rate increased sharply in April and May, decreased in June to September, and increased again in October to December. The spikes in mortality correspond to Wave 1 and Wave 2 of the pandemic.

Table 1 presents the number and percentage of residents between March 2020 and December 2020 based on their COVID-19 test results and demographic variables. Although the COVID-19 positivity rate was statistically significant for every variable, there were substantial differences between categories for some variables such as region and LTC home ownership. For example, the positivity rate was 23.4% for Central Ontario compared to only 1.8% for Northern Ontario. In addition, it was 5.4% for municipally owned homes compared to 16.6% for privately owned for-profit homes.

In the following, a death was counted for a resident if it occurred within 30 days of a COVID-19 test. International studies suggest that most deaths caused by COVID-19 among LTC home residents occur within the first 28 to 30 days after a SARS-CoV-2 diagnosis [25, 26]. After 30 days, death among residents is more likely to be attributable to another disease or underlying condition [26].

Table 2 shows large differences in mortality based on COVID-19 test results and demographics. The maximum difference between the youngest and oldest groups of residents with a negative test was 2.3%, but it was 13.81% for those with a positive test. According to the frailty

Table 1. Distribution, n (%), of COVID-19 tests based on demographics from March 2020 to December 2020.

Category	Negative Test	Positive Test	Total	P-value
Sex				
Male	20,586 (87.0)	3082 (13.0)	23,668	0.002
Female	45,150 (87.8)	6282 (12.2)	51,432	-
Age group				
65–69 years	3679 (86.4)	579 (13.6)	4285	0.001
70–74 years	5689 (86.7)	872 (13.3)	6561	-
75–79 years	8413 (87.4)	1211 (12.6)	9624	-
80–84 years	12,476 (87.1)	1844 (12.9)	14,320	-
≥85 years	35,479 (88.0)	4858 (12.0)	40,337	-
Age: Mean (SD)	84.3 (8.2)	83.8 (8.2)	84.3 (8.2)	<0.001
CHES^a scale: Mean (SD)	0.72 (0.83)	0.60 (0.76)	0.71 (0.83)	<0.001
Region				
Central	15,662 (76.6)	4793 (23.4)	20,455	<0.001
Southwest	23,251 (92.3)	1932 (7.7)	25,183	-
East	17,492 (87.7)	2453 (12.3)	19,945	-
North	9287 (98.2)	174 (1.8)	9461	-
Income quintile				
1 (lowest)	19,946 (87.5)	2796 (12.5)	22,292	<0.001
2	13,917 (85.6)	2333 (14.4)	16,250	-
3	11,824 (87.6)	1677 (12.4)	13,501	-
4	10,940 (89.5)	1284 (10.5)	12,224	-
5 (highest)	9029 (88.4)	1183 (11.6)	10,212	-
Frailty index				
Robust	8518 (87.6)	1205 (12.4)	9723	<0.001
Pre-frail	21,666 (86.5)	3381 (13.5)	25,047	-
Frail	34,963 (88.1)	4737 (11.9)	39,700	-
Long-term care home ownership				
Municipal	14,822 (94.6)	850 (5.4)	15,672	<0.001
Non-profit	18,225 (90.0)	2027 (10.0)	20,252	-
Private	32,672 (83.4)	6487 (16.6)	39,159	-
Total	65,736 (87.5)	9364 (12.5)	75,100	-

^aChanges in Health, End-stage disease and Symptoms and Signs.

<https://doi.org/10.1371/journal.pone.0262807.t001>

index, there was a 3.31% difference between the youngest and oldest groups of residents with a negative test and a 12.45% difference for those with a positive test. Also, there was a maximum difference of 1.50% between geographical regions (Central vs. North) among residents with negative tests, but the difference increased to 11.44% (East vs. North) among residents with positive tests.

In the following we compared overall mortality between positive and negative tests using a flexible parametric model while adjusting for the demographic and geographic factors. Therefore, the difference in mortality can be treated as the excess mortality between positive and negative tests. Potential predictors are shown in Table 3. The effects of each variable were adjusted for the other variables. There was an interaction between region of LTC home and COVID-19 test result. Using Central Ontario with negative test as the reference group, the highest risk of death for residents with positive tests was observed in Eastern Ontario (HR = 6.90; 95% CI: 6.24, 7.64), followed by Southwest Ontario (HR = 5.64; 95% CI: 5.00,

Table 2. Mortality rate (%) based on COVID-19 tests and demographics for March 2020 to December 2020.

Category	Negative Test		Positive Test		Total	
	Mortality rate	P-value	Mortality rate	P-value	Mortality rate	P-value
Sex						
Male	5.76	<0.001	32.18	<0.001	9.13	<0.001
Female	4.18	-	21.27	-	6.24	-
Age group						
65–69 years	3.06	-	15.09	-	4.67	-
70–74 years	3.59	-	17.76	-	5.45	-
75–79 years	3.90	<0.001	19.62	<0.001	5.87	<0.001
80–84 years	4.22	-	23.94	-	6.71	-
≥85 years	5.36	-	28.90	-	8.14	-
Region						
Central	5.38	-	23.59	-	9.60	-
Southwest	4.44	<0.001	21.18	<0.001	5.67	<0.001
East	4.78	-	30.49	-	7.91	-
North	3.88	-	19.05	-	4.16	-
Income quintile						
1 (lowest)	4.69	-	24.51	-	7.14	-
2	4.81	-	26.35	-	7.88	-
3	4.41	0.098	25.34	0.244	6.96	<0.001
4	4.40	-	23.61	-	6.37	-
5 (highest)	5.11	-	23.36	-	7.17	-
Frailty index						
Robust	2.41	-	16.75	-	4.19	-
Pre-frail	3.74	<0.001	21.61	<0.001	6.12	<0.001
Frail	5.72	-	29.20	-	8.47	-
Long-term care home ownership						
Municipal	4.27	-	22.45	-	5.23	-
Non-profit	4.43	<0.001	23.48	0.044	6.32	<0.001
Private	5.00	-	25.58	-	8.36	-

<https://doi.org/10.1371/journal.pone.0262807.t002>

6.39), Central Ontario (HR = 5.27; 95% CI: 4.81, 5.78), and Northern Ontario (HR = 4.73; 95% CI: 3.32, 6.75).

The risk of death for COVID-19 positive patients was time dependent and increased daily (HR for interaction between a positive test and time = 1.06; 95% CI: 1.03–1.08). Risk of death in private LTC homes was 25% higher than in municipal homes (HR = 1.25, 95% CI: 1.16–1.35). There was no significant difference in risk of death between non-profit LTC homes and municipal homes ($p = 0.235$).

We also examined variation in mortality rate based on region and COVID-19 test result. Fig 2 shows the mortality rate (per 1000 person-day) for 30 days after a test. This figure is based on the final model and is adjusted for sex, age group, Changes in Health, End-stage disease and Symptoms and Signs (CHESS) scale, frailty, and long-term care home ownership.

Depending on the region, the mortality rate was at the highest level 3 to 5 days after a positive result and then subsided and plateaued after 20 days. We also estimated differences in mortality based on COVID-19 test as an approximate for excess mortality rate due to a positive test and found that excess mortality for a positive test started at 8 per 1000 person-days and increased sharply up to 4 days after the test (Fig 3). It then gradually decreased but remained

Table 3. Predictors of death within 30 Days after COVID-19 test.

Variable	HR ^a (95% CI)	P-value
Region, COVID-19 test result		
Central, negative	Reference group	-
Central, positive	5.27 (4.81, 5.78)	<0.001
Southwest, negative	0.77 (0.70, 0.84)	<0.001
Southwest, positive	5.64 (5.00, 6.39)	<0.001
East, negative	0.86 (0.78, 0.94)	0.002
East, positive	6.90 (6.24, 7.64)	<0.001
North, negative	0.73 (0.64, 0.82)	<0.001
North, positive	4.73 (3.32, 6.75)	<0.001
+ test interaction with time	1.06 (1.03, 1.08)	<0.001
Sex		
Male	Reference group	-
Female	0.58 (0.55, 0.62)	<0.001
Age group		
65–69 years	Reference group	-
70–74 years	1.16 (0.97, 1.38)	0.105
75–79 years	1.33 (1.12, 1.57)	0.001
80–84 years	1.53 (1.31, 1.79)	<0.001
≥85 years	2.00 (1.73, 2.32)	<0.001
CHESS^b scale	1.13 (1.09, 1.16)	<0.001
Frailty index		
Robust	Reference group	-
Pre-frail	1.44 (1.29, 1.61)	<0.001
Frail	2.06 (1.85, 2.29)	<0.001
Long-term care home ownership		
Municipal	Reference group	-
Non-profit	1.06 (0.97, 1.16)	0.235
Private	1.25 (1.16, 1.35)	<0.001

^aHazard rate.

^bChanges in Health, End-stage disease and Symptoms and Signs.

<https://doi.org/10.1371/journal.pone.0262807.t003>

elevated until 30 days after the test. The highest excess mortality was approximately 14 per 1000 person-days.

Discussion

In this study, we compared crude mortality rates between 2019 and 2020 for LTC residents in Ontario. We also compared mortality rates between LTC residents with positive and negative COVID-19 tests. We chose to focus on deaths among LTC residents in Ontario as the rate of mortality was 13 times higher than the rate for older adults living in the community [10]. The difference in mortality was assumed to estimate the excess mortality due to a positive test. Our findings align with evidence indicating an excess number of deaths in LTC homes across Ontario and Canada as well as internationally [4, 9, 16, 17, 27–31]. Ontario's Long-Term Care COVID-19 Commission reported the province "was not prepared for a pandemic and that the province's long-term care homes, which had been neglected for decades by successive governments, were easy targets for uncontrolled outbreaks" ([32] p2).

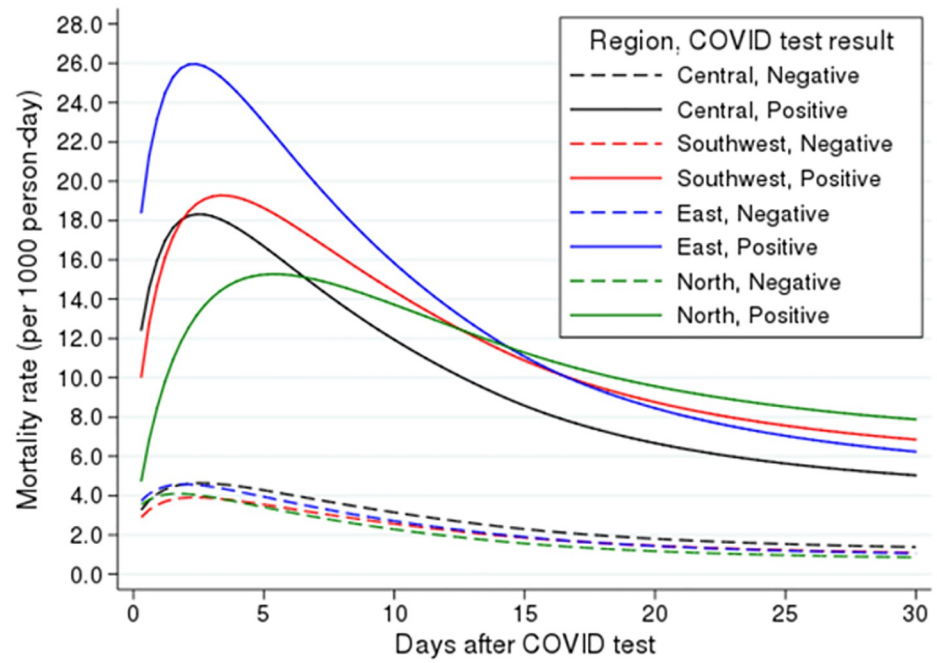


Fig 2. Adjusted mortality rate based on region and COVID-19 test result adjusted for sex, age group, Changes in Health, End-stage disease and Symptoms and Signs (CHESS) scale, frailty, and long-term care home ownership.

<https://doi.org/10.1371/journal.pone.0262807.g002>

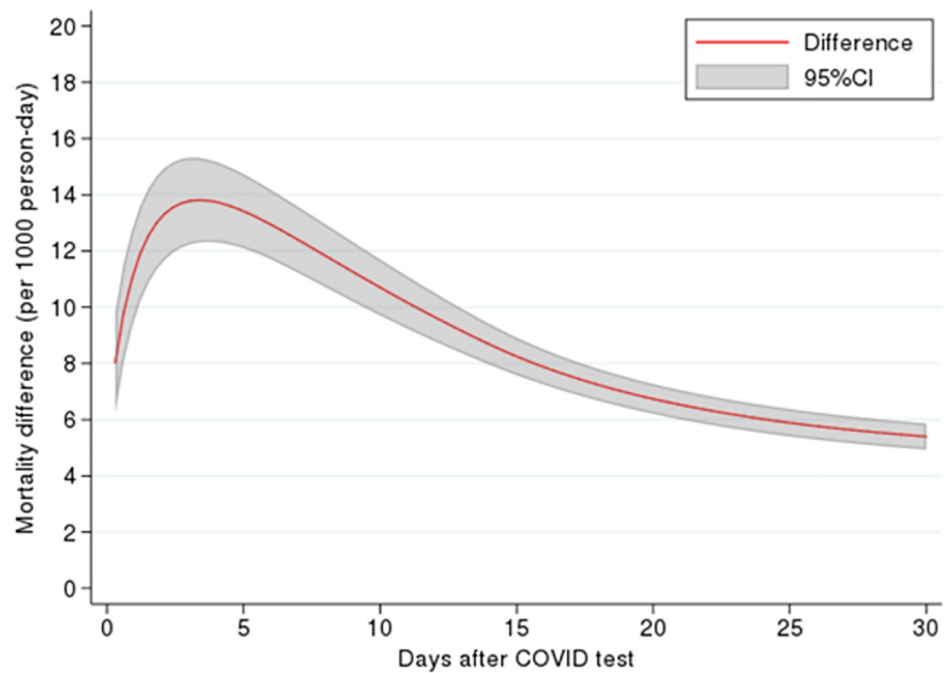


Fig 3. Excess mortality rate due to a positive COVID-19 test, adjusted for sex, age group, Changes in Health, End-stage disease and Symptoms and Signs (CHESS) scale, frailty, and long-term care home ownership.

<https://doi.org/10.1371/journal.pone.0262807.g003>

The stark difference in mortality observed in April 2020 and May 2020 coincides with Wave 1 of the pandemic in Ontario, during which there was insufficient personal preventive equipment for LTC staff and residents and no clear policies for LTC homes. For example, orders to limit the movement of LTC staff were not implemented until mid-April and were not initially applied to contract staff hired through employment agencies [33, 34]. When LTC homes managed to control the virus in June 2020, mortality rates for July to September decreased considerably and were slightly lower than the rates for the same period in 2019. For residents with positive COVID-19 tests, the drop in mortality for July to September is in keeping with other reports [9]. The decrease in mortality may be the result of various factors, including increased supports due to emergency funding from the provincial government and implementation of stricter rules in LTC homes [31]. Heightened screening, additional equipment, and containment strategies may have helped improve infection prevention and control in LTC homes during the summer months of 2020 [33]. The decrease in mortality could also be because the residents who survived Wave 1 were younger or healthier at baseline. Yet the decrease was short lived as rates rose again in November 2020 and December 2020 during Wave 2.

The results from our study revealed differences in mortality based on key demographic and regional variations. In addition to variables such as age group and sex for which higher mortality rates are usually expected at different levels, the difference in mortality based on LTC home ownership provides critical evidence for early findings. We determined that mortality rates in privately owned homes were 25% higher compared to municipally owned homes. Stall and colleagues [31] found that for-profit status was associated with an increase in the extent of an outbreak and the number of resident deaths when compared to municipal and not-for-profit homes. However, they concluded that these differences were explained by a higher prevalence of older design standards in for-profit LTC homes and chain ownership.

The regional differences in excess mortality across LTC homes in Ontario suggest there may be gaps in the healthcare system that warrant attention from policymakers. Compared to Central Ontario, the test positivity rates for Eastern Ontario were almost half but the mortality rate was much higher. Research indicates that low population density within regions may be attributed to lower cumulative COVID-19 incidence rates in LTC homes [30, 31]. Our study demonstrates that even in areas with lower population densities additional factors may drive excess mortality. An international study of mortality in LTC homes determined that the share of resident deaths linked to COVID-19 was highly correlated to the number of COVID-19 deaths in the population that lived outside the homes [27].

Limitations

There are several limitations to the data set used in our analysis. As with all administrative databases and issues related to the pandemic, this study is subject to coding error. The nature of the study means we cannot make predictions or infer causality; we can only report associations. Furthermore, death secondary to COVID-19 was inferred based on a test positivity rate. However, exact cause of death was not recorded in some of the data sets. Testing data may not have captured all residents with COVID-19, as mandatory testing in LTC homes was not implemented until well into Wave 1 of the pandemic.

Conclusions

This study revealed important differences in mortality across years and positivity rates for residents of LTC homes in the largest Canadian province. Differences across regions and homes with various ownership models highlighted areas that require policy reform to improve

resident care, especially during crises. Across the globe, countries have documented similar trends on the devastating effects of the pandemic on vulnerable populations living in long-term care homes. Findings from this study are an important contribution to the ongoing research about excess deaths due to COVID-19. The data provide evidence of the key factors that contributed to the increased number of deaths in long-term care. Future research is needed to identify the most relevant factors in explaining the differences between ownership models and regions as well as an analysis of excess mortality nationally.

Acknowledgments

This work was supported by the Ontario Health Data Platform (OHDP), a Province of Ontario initiative to support Ontario's ongoing response to COVID-19 and its related impacts. Parts of this material are based on data and information compiled and provided by the Canadian Institute for Health Information (CIHI). The conclusions, opinions and statements expressed herein are solely those of the authors and do not reflect those of the OHDP, the funding or data sources; no endorsement is intended or should be inferred. The authors would like to thank Mike Campitelli and Branavan Sivapathasundaram at the Institute for Clinical Evaluative Sciences (ICES) for preparing the extracted data for analysis.

Author Contributions

Conceptualization: Noori Akhtar-Danesh, Andrea Baumann, Mary Crea-Arsenio.

Data curation: Noori Akhtar-Danesh, Mary Crea-Arsenio, Valentina Antonipillai.

Formal analysis: Noori Akhtar-Danesh.

Funding acquisition: Andrea Baumann, Mary Crea-Arsenio.

Investigation: Andrea Baumann.

Methodology: Noori Akhtar-Danesh.

Project administration: Andrea Baumann.

Validation: Noori Akhtar-Danesh.

Visualization: Noori Akhtar-Danesh.

Writing – original draft: Noori Akhtar-Danesh, Andrea Baumann, Mary Crea-Arsenio.

Writing – review & editing: Noori Akhtar-Danesh, Andrea Baumann, Mary Crea-Arsenio, Valentina Antonipillai.

References

1. Canadian Institute for Health Information. Pandemic Experience in the Long-Term Care Sector: How Does Canada Compare With Other Countries? Ottawa, ON: CIHI, 2020.
2. Ballin M, Bergman J, Kivipelto M, Nordstrom A, Nordstrom P. Excess Mortality After COVID-19 in Swedish Long-Term Care Facilities. *J Am Med Dir Assoc.* 2021; 22(8):1574–80 e8. Epub 2021/06/27. <https://doi.org/10.1016/j.jamda.2021.06.010> PMID: 34174196; PubMed Central PMCID: PMC8223135.
3. Alacevich C, Cavalli N, Giuntella O, Lagravinese R, Moscone F, Nicodemo C. The presence of care homes and excess deaths during the COVID-19 pandemic: Evidence from Italy. *Health Econ.* 2021; 30(7):1703–10. Epub 2021/04/23. <https://doi.org/10.1002/hec.4277> PMID: 33884695; PubMed Central PMCID: PMC8250368.
4. Morciano M, Stokes J, Kontopantelis E, Hall I, Turner AJ. Excess mortality for care home residents during the first 23 weeks of the COVID-19 pandemic in England: a national cohort study. *BMC Med.* 2021; 19(1):71. Epub 2021/03/06. <https://doi.org/10.1186/s12916-021-01945-2> PMID: 33663498; PubMed Central PMCID: PMC7932761.

5. Hardy OJ, Dubourg D, Bourguignon M, Dellicour S, Eggerickx T, Gilbert M, et al. A world apart: levels and factors of excess mortality due to COVID-19 in care homes. The case of Wallonia—Belgium. *Medrxiv*. 2020. <https://doi.org/10.1101/2020.08.29.20183210>.
6. Statistics Canada. Table 17-10-0009-01 Population estimates, quarterly (<https://www150.statcan.gc.ca/t1/tbl1/en/tv.action?pid=1710000901>, Accessed June 25, 2020). Statistics Canada, 2020.
7. Canadian Institute for Health Information. Long-term care homes in Canada: How many and who owns them? Canadian Institute for Health Information, 2021.
8. Ontario Agency for Health Protection and Promotion (Public Health Ontario). Enhanced Epidemiological Summary: COVID-19 in Long-Term Care Home Residents in Ontario—January 15, 2020 to February 28, 2021. Toronto, ON: Queen's Printer for Ontario, 2021.
9. Canadian Institute for Health Information. The Impact of COVID-19 on Long-Term Care in Canada: Focus on the First 6 Months. Ottawa, ON: CIHI, 2021.
10. Fisman DN, Bogoch I, Lapointe-Shaw L, McCreedy J, Tuite AR. Risk Factors Associated With Mortality Among Residents With Coronavirus Disease 2019 (COVID-19) in Long-term Care Facilities in Ontario, Canada. *JAMA Netw Open*. 2020; 3(7):e2015957. Epub 2020/07/23. <https://doi.org/10.1001/jamanetworkopen.2020.15957> PMID: 32697325; PubMed Central PMCID: PMC7376390.
11. Damian J, Pastor-Barriuso R, Garcia-Lopez FJ, Ruigomez A, Martinez-Martin P, de Pedro-Cuesta J. Facility ownership and mortality among older adults residing in care homes. *PLoS One*. 2019; 14(3):e0197789. Epub 2019/03/02. <https://doi.org/10.1371/journal.pone.0197789> PMID: 30822307; PubMed Central PMCID: PMC6396963.
12. Tanuseputro P, Chalifoux M, Bennett C, Gruneir A, Bronskill SE, Walker P, et al. Hospitalization and Mortality Rates in Long-Term Care Facilities: Does For-Profit Status Matter? *J Am Med Dir Assoc*. 2015; 16(10):874–83. Epub 2015/10/05. <https://doi.org/10.1016/j.jamda.2015.06.004> PMID: 26433862.
13. Beaulieu M, Genesse JC, St-Martin K. High death rate of older persons from COVID-19 in Quebec (Canada) long-term care facilities: chronology and analysis. *The Journal of Adult Protection*. 2021; 23(2):110–5.
14. Brown KA, Jones A, Daneman N, Chan AK, Schwartz KL, Garber GE, et al. Association Between Nursing Home Crowding and COVID-19 Infection and Mortality in Ontario, Canada. *JAMA Intern Med*. 2021; 181(2):229–36. Epub 2020/11/10. <https://doi.org/10.1001/jamainternmed.2020.6466> PMID: 33165560; PubMed Central PMCID: PMC7653540.
15. Panagiotou OA, Kosar CM, White EM, Bantis LE, Yang X, Santostefano CM, et al. Risk Factors Associated With All-Cause 30-Day Mortality in Nursing Home Residents With COVID-19. *JAMA Intern Med*. 2021; 181(4):439–48. Epub 2021/01/05. <https://doi.org/10.1001/jamainternmed.2020.7968> PMID: 33394006; PubMed Central PMCID: PMC7783593.
16. Public Health Agency of Canada COVID-19 Surveillance and Epidemiology Team. Descriptive epidemiology of deceased cases of COVID-19 reported during the initial wave of the epidemic in Canada, January 15 to July 9, 2020. *Can Commun Dis Rep*. 2020; 46(10):344–8. Epub 2020/12/15. <https://doi.org/10.14745/ccdr.v46i10a06> PMID: 33316013
17. Dean A, Venkataramani A, Kimmel S. Mortality Rates From COVID-19 Are Lower In Unionized Nursing Homes. *Health Aff (Millwood)*. 2020; 39(11):1993–2001. Epub 2020/09/11. <https://doi.org/10.1377/hlthaff.2020.01011> PMID: 32910688.
18. Krelle H, Barclay C, Tallack C. Understanding excess mortality- What is the fairest way to compare COVID-19 deaths internationally? The Health Foundation, 2020.
19. Beaney T, Clarke JM, Jain V, Golestaneh AK, Lyons G, Salman D, et al. Excess mortality: the gold standard in measuring the impact of COVID-19 worldwide? *J R Soc Med*. 2020; 113(9):329–34. Epub 2020/09/11. <https://doi.org/10.1177/0141076820956802> PMID: 32910871; PubMed Central PMCID: PMC7488823.
20. Hirdes JP, Frijters DH, Teare GF. The MDS-CHESS scale: a new measure to predict mortality in institutionalized older people. *J Am Geriatr Soc*. 2003; 51(1):96–100. Epub 2003/01/22. <https://doi.org/10.1034/j.1601-5215.2002.51017.x> PMID: 12534853.
21. Lee JS, Chau PP, Hui E, Chan F, Woo J. Survival prediction in nursing home residents using the Minimum Data Set subscales: ADL Self-Performance Hierarchy, Cognitive Performance and the Changes in Health, End-stage disease and Symptoms and Signs scales. *Eur J Public Health*. 2009; 19(3):308–12. Epub 2009/02/18. <https://doi.org/10.1093/eurpub/ckp006> PMID: 19221020.
22. Lambert PC, Royston P. Further development of flexible parametric models for survival analysis. *Stata J*. 2009; 9(2):265–90. WOS:000268973400006.
23. Royston P, Parmar MK. Flexible parametric proportional-hazards and proportional-odds models for censored survival data, with application to prognostic modelling and estimation of treatment effects. *Stat Med*. 2002; 21(15):2175–97. Epub 2002/09/05. <https://doi.org/10.1002/sim.1203> PMID: 12210632.

24. Rutherford MJ, Dickman PW, Lambert PC. Comparison of methods for calculating relative survival in population-based studies. *Cancer Epidemiol.* 2012; 36(1):16–21. Epub 2011/08/16. <https://doi.org/10.1016/j.canep.2011.05.010> PMID: 21840284.
25. Meis-Pinheiro U, Lopez-Segui F, Walsh S, Ussi A, Santa Eugenia S, Garcia-Navarro JA, et al. Clinical characteristics of COVID-19 in older adults. A retrospective study in long-term nursing homes in Catalonia. *PLoS One.* 2021; 16(7):e0255141. Epub 2021/07/24. <https://doi.org/10.1371/journal.pone.0255141> PMID: 34297774; PubMed Central PMCID: PMC8301631.
26. Nilsson L, Andersson C, Sjodahl R. COVID-19 as the sole cause of death is uncommon in frail home healthcare individuals: a population-based study. *BMC Geriatr.* 2021; 21(1):262. Epub 2021/04/22. <https://doi.org/10.1186/s12877-021-02176-z> PMID: 33879078; PubMed Central PMCID: PMC8057661.
27. Comas-Herrera A, Zalakaín J, Lemmon E, Henderson D, Litwin C, Hsu AT, et al. Mortality associated with COVID-19 in care homes: international evidence. Article in LTCcovidorg, International Long-Term Care Policy Network, CPEC-LSE, 1st February 2021 [Internet]. 2020.
28. Dutey-Magni PF, Williams H, Jhass A, Rait G, Lorencatto F, Hemingway H, et al. COVID-19 infection and attributable mortality in UK care homes: Cohort study using active surveillance and electronic records (March–June 2020). *Age Ageing.* 2021. Epub 2021/03/13. <https://doi.org/10.1093/ageing/afab060> PMID: 33710281; PubMed Central PMCID: PMC7989651.
29. Sepulveda ER, Stall NM, Sinha SK. A Comparison of COVID-19 Mortality Rates Among Long-Term Care Residents in 12 OECD Countries. *J Am Med Dir Assoc.* 2020; 21(11):1572–4 e3. Epub 2020/11/04. <https://doi.org/10.1016/j.jamda.2020.08.039> PMID: 33138940; PubMed Central PMCID: PMC7486852.
30. Stall NM, Brown KA, Maltsev A, Jones A, Costa AP, Allen V, et al. COVID-19 and Ontario's Long-Term Care Homes. *Science Briefs of the Ontario COVID19 Science Advisory Table*, 2021 January 26, 2021. Report No.
31. Stall NM, Jones A, Brown KA, Rochon PA, Costa AP. For-profit long-term care homes and the risk of COVID-19 outbreaks and resident deaths. *CMAJ.* 2020; 192(33):E946–E55. Epub 2020/07/24. <https://doi.org/10.1503/cmaj.201197> PMID: 32699006.
32. Ontario's Long-Term Care COVID-19 Commission. Ontario's Long-Term Care COVID-19 Commission: Final Report. Ottawa, ON: 2021 April 30, 2021. Report No.: ISBN 978-1-7776961-0-8.
33. Auditor General of Ontario. COVID-19 Preparedness and Management: Special Report on Pandemic Readiness and Response in Long-Term Care. Toronto, ON: Office of the Auditor General of Ontario, 2021.
34. Liu M, Maxwell CJ, Armstrong P, Schwandt M, Moser A, McGregor MJ, et al. COVID-19 in long-term care homes in Ontario and British Columbia. *CMAJ.* 2020; 192(47):E1540–E6. Epub 2020/10/02. <https://doi.org/10.1503/cmaj.201860> PMID: 32998943.