

## Research Article

## Survival of mature T cells in the periphery is intrinsically dependent on GIMAP1 in mice

Preeta Datta\*, Louise M.C. Webb\*, Inxhina Avdo, John Pascall and Geoffrey W. Butcher

Laboratory of Lymphocyte Signalling and Development, The Babraham Institute, Cambridge, United Kingdom

An effective immune system depends upon the survival of mature T cells in the periphery. Members of the GIMAP family of GTPases have been proposed to regulate this homeostasis, supported by the paucity of peripheral T cells in rodents deficient for either GIMAP1 or GIMAP5. It is unclear whether this lack of T cells is a consequence of an ontological defect, causing the thymus to generate and export T cells incapable of surviving in the periphery, or whether (alternatively or additionally) mature T cells intrinsically require GIMAP1 for survival. Using the  $ER^{T2}Cre^+$  transgene, we conditionally deleted *Gimap1* in C57BL/6 mice and demonstrate that GIMAP1 is intrinsically required for the survival of mature T cells in the periphery. We show that, in contrast to GIMAP5, this requirement is independent of the T-cells' activation status. We investigated the nature of the survival defect in GIMAP1-deficient  $CD4^+$  T cells and show that the death occurring after GIMAP1 ablation is accompanied by mitochondrial depolarization and activation of the extrinsic apoptotic pathway. This study shows that GIMAP1 is critical for maintaining the peripheral T-cell pool in mice and offers a potent target for the treatment of T-cell-mediated diseases.

**Keywords:** Apoptosis ·  $CD4^+$  T cells ·  $CD8^+$  T cells · Cell survival · Homeostasis



Additional supporting information may be found in the online version of this article at the publisher's web-site

## Introduction

The functioning of the adaptive immune system is dependent upon the availability of a large pool of quiescent lymphocytes with diverse Ag receptors. These cells are continuously produced by the thymus from where they egress into the periphery as naive T cells with lifespans ranging from 3 to 10 months in mice [1, 2] to an estimated half-life of 2 years in humans [3]. Long-term survival and homeostasis of peripheral naive T lymphocytes is regulated by the availability of the  $\gamma_c$ -chain cytokine IL-7 and of low affinity self-peptides [4, 5].

The GIMAPs (GTPases of the IMmunityASsociated PRoteins) are a family of 7–9 small GTPases highly expressed in lymphocytes [6]. They are defined by the presence of an AIG1 domain, the prototype for which is found in *Arabidopsis thaliana*, where it is thought to play a role in defence against pathogens [7]. The GIMAP family plays an important but as yet undefined role that contributes to the survival of cells during T- and B-cell lymphopoiesis. Loss of individual members of the family has a detrimental effect on mature lymphocyte survival. For instance, significant T-cell lymphopenia is observed in GIMAP5-deficient mice and rats [8–11]. Moreover, the GIMAP5 lesion is also found

**Correspondence:** Dr. Geoffrey W. Butcher  
e-mail: geoff.butcher@babraham.ac.uk

\*Both authors contributed equally.

to compromise the lifespan of rat peripheral T cells in vitro by increasing the rate of apoptosis [12]. B cell lymphopenia is also observed in GIMAP5-deficient mice [9, 13]. Knock-down of mouse *Gimap3* in fetal thymic organ culture (FTOC) leads to a block in positive selection during thymopoiesis, while reconstitution experiments using GIMAP3-deficient bone marrow also demonstrate defective T-cell development and loss of the mature T-cell populations [14]. The double ablation of *Gimap3* and *Gimap5* produces a more severe phenotype than either individual deficiency [10]. Preliminary analysis of GIMAP6-deficient mice also shows its requirement for normal T-cell survival in the periphery (John Pascall, personal communication). By contrast, mice and rats deficient in either GIMAP4 or GIMAP8 show no obvious defects in T or B cell lymphopoiesis [15–17] but ex vivo their T cells demonstrate delays in progression through apoptosis [15, 16].

GIMAP1 is the prototypic member of the family [18] and has a significant effect on lymphocyte survival. The gene is upregulated in response to p53-mediated apoptosis in a temperature-sensitive leukemia cell line [19]; it is also reported to be upregulated in response to TCR stimulation under T<sub>H</sub>1-polarising conditions and correspondingly down-regulated under T<sub>H</sub>2-polarising conditions [20].

The GIMAP1 protein is consistently expressed at all stages of thymopoiesis and its expression is maintained at a high level in mature lymphocytes [22]. It is also expressed in non-lymphoid tissues such as the brain, heart, lungs, and kidneys [21]. To circumvent any issues of animal viability, we generated the first conditional mouse knock-out model for the GIMAPs, by the hCD2iCre-driven ablation of *Gimap1* in lymphoid progenitors [22]. The early stages of lymphocyte development in the resulting mice appeared largely unaffected by this gene ablation. However, the mature T- and B-cell compartments exhibited profound lymphopenia [22]. It was unclear whether the T-cell deficit observed in these animals was the consequence of a late-stage intrathymic defect that produced T cells incapable of surviving in the periphery (a “legacy effect”), or whether mature CD4<sup>+</sup> and CD8<sup>+</sup> T cells themselves depend intrinsically on GIMAP1 for their long-term survival. The hCD2iCre-conditional ablation model was unable to resolve this issue, not least because of the extreme paucity of mature cells remaining in the system. In addition, CD4 and CD8 SP thymocytes from *Gimap1<sup>f/f</sup>hCD2iCre<sup>+</sup>* mice were reduced in number and showed a survival defect in vitro. This suggested that the survival defect may occur before cells enter the periphery, implicating a “legacy effect” for peripheral T cells that have developed in the absence of GIMAP1 expression. To address this issue we have now generated an inducible *Gimap1* ablation model, based on the ER<sup>T2</sup>Cre system, in which a ‘floxed’ target gene may be electively ablated by the application of tamoxifen, or its derivative 4-hydroxytamoxifen (4-OHT), to otherwise normal cells. This allows selective ablation of GIMAP1 in mature T cells enabling us to determine if GIMAP1 is intrinsically required for their survival in the periphery.

In the present study we show that loss of GIMAP1 significantly compromises the survival of ex vivo-cultured mature CD4<sup>+</sup> T lymphocytes and of CD4<sup>+</sup> and CD8<sup>+</sup> T cells in vivo. We show that

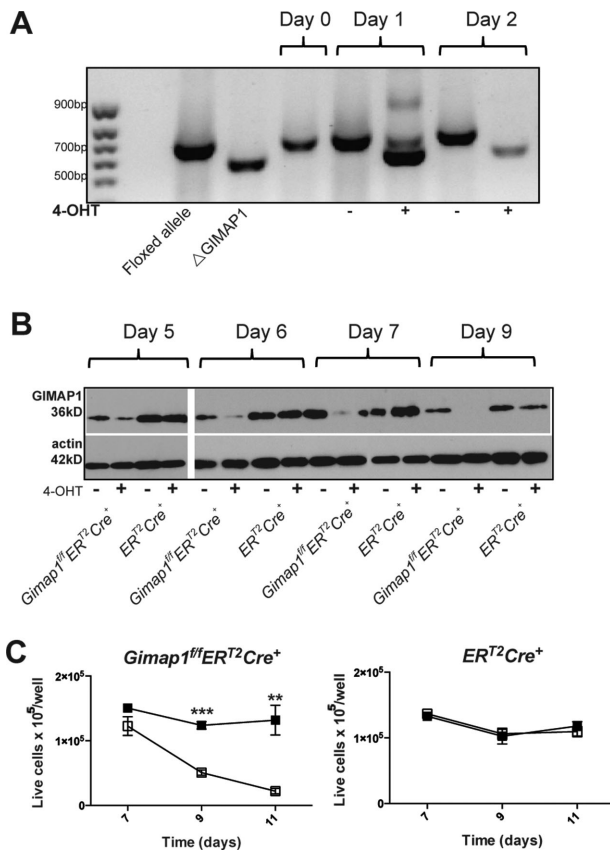
GIMAP1 is essential for the survival of both resting and activated CD4<sup>+</sup> T cells. Closer examination revealed that the cell death observed in GIMAP1-deficient CD4<sup>+</sup> T cells was preceded by loss of mitochondrial function and activation of the extrinsic apoptotic pathway.

## Results

### Resting and activated peripheral CD4<sup>+</sup> T cells require GIMAP1 for their survival ex vivo

Previously, we showed that deletion of *Gimap1* in early lymphoid progenitors resulted in a profound deficiency in peripheral T and B lymphocytes [22]. It remained unresolved, however, whether the lack of T cells in *Gimap1<sup>f/f</sup>CD2Cre<sup>+</sup>* animals is due to (A) a requirement for GIMAP1 during development in primary lymphoid organs which impacts on their subsequent ability to survive in the periphery (a “legacy effect”), or (B) a requirement for continuous expression of GIMAP1 in peripheral T cells. To distinguish between these two possibilities, we developed a model in which *Gimap1* could be deleted in T cells once they had matured and entered the periphery. *Gimap1<sup>f/f</sup>* and ER<sup>T2</sup>Cre<sup>+</sup> mice were crossed to generate *Gimap1<sup>f/f</sup>ER<sup>T2</sup>Cre<sup>+</sup>* mice, with which we could perform conditional ablation of *Gimap1* with either tamoxifen or its derivative, 4-OHT. To control for off-target effects and Cre-mediated toxicity, all experiments included cells from the ER<sup>T2</sup>Cre<sup>+</sup> mouse strain as a control [23]. We first asked whether resting CD4<sup>+</sup> T cells required GIMAP1. CD4<sup>+</sup> T cells were purified from *Gimap1<sup>f/f</sup>ER<sup>T2</sup>Cre<sup>+</sup>* and ER<sup>T2</sup>Cre<sup>+</sup> spleen and lymph nodes and cultured in vitro in IL-7 for 7–10 days in the presence of either vehicle (DMSO) or 4-OHT. DNA was purified from cells to assess deletion of *Gimap1* and cell lysates were analysed for GIMAP1 protein expression by western blot. As shown in Fig. 1A, *Gimap1* was deleted by day 2 of culture. However, western blots showed that GIMAP1 protein was detectable until day 6–7 of culture and was completely lost by day 9 (Fig. 1B). To determine how deletion of *Gimap1* affects survival of CD4<sup>+</sup> T cells, live cells were enumerated by flow cytometric analysis of DAPI<sup>-</sup> cells using flow count beads. 4-OHT had no effect on cell viability until days 7–9 of culture when the number of live *Gimap1<sup>f/f</sup>ER<sup>T2</sup>Cre<sup>+</sup>* CD4<sup>+</sup> T cells plummeted (Fig. 1C). This correlated with the disappearance of GIMAP1 protein, suggesting that CD4<sup>+</sup> T cells require continuous expression of GIMAP1 for their survival. No effect of 4-OHT on the survival of ER<sup>T2</sup>Cre<sup>+</sup> T cells was seen (Fig. 1C), indicating that the effects on *Gimap1<sup>f/f</sup>ER<sup>T2</sup>Cre<sup>+</sup>* cells were not due to Cre-mediated toxicity.

Published work on GIMAP5 has suggested that it participates in T-cell activation [12, 24, 25] and that cell death in GIMAP5-deficient lymphocytes can be overcome by activating the cells. However, the model systems used relied upon T cells that had developed in GIMAP5-deficient rodents, making it difficult to determine whether the effects observed were due to a “legacy” effect. Furthermore, cells developing in a lymphopenic environment undergo homeostatic proliferation and acquire a “memory” phenotype, thereby making them a poor comparison for normal



**Figure 1.** Conditional deletion of the “floxed” *Gimap1* allele by the *ER<sup>2</sup>Cre* transgene and 4-OHT treatment. (A) Deletion of floxed *Gimap1* gene. Resting CD4<sup>+</sup> T cells from *Gimap1<sup>ff</sup>ER<sup>2</sup>Cre<sup>+</sup>* and *ER<sup>2</sup>Cre<sup>+</sup>* mice were cultured in IL-7 in the presence of 50 nM 4-OHT or vehicle control. Cells were harvested and DNA extracted prior to PCR analysis of *Gimap1* to determine deletion. (B) Western blot analysis of GIMAP1 and actin expression in CD4<sup>+</sup> T cells from *Gimap1<sup>ff</sup>ER<sup>2</sup>Cre<sup>+</sup>* or *ER<sup>2</sup>Cre<sup>+</sup>* mice cultured in IL-7 in the presence of 4-OHT or vehicle control. Actin was used as a loading control. (A, B) Data are from a single experiment representative of three experiments performed. (C) Resting CD4<sup>+</sup> T cells were cultured in IL-7 at a density of  $1 \times 10^5$ /well in 96-well plates. Cells were treated for two days with either vehicle control (DMSO: ■) or 50 nM tamoxifen (□). Live cells (DAPI<sup>-</sup>) were enumerated by flow cytometry. Results are presented as number of live cells/well and shown as mean ± SEM of triplicate samples. Data are from a single experiment representative of three experiments performed. \*\**p* < 0.005, \*\*\**p* < 0.0005 (paired 2-tailed Student’s *t*-test).

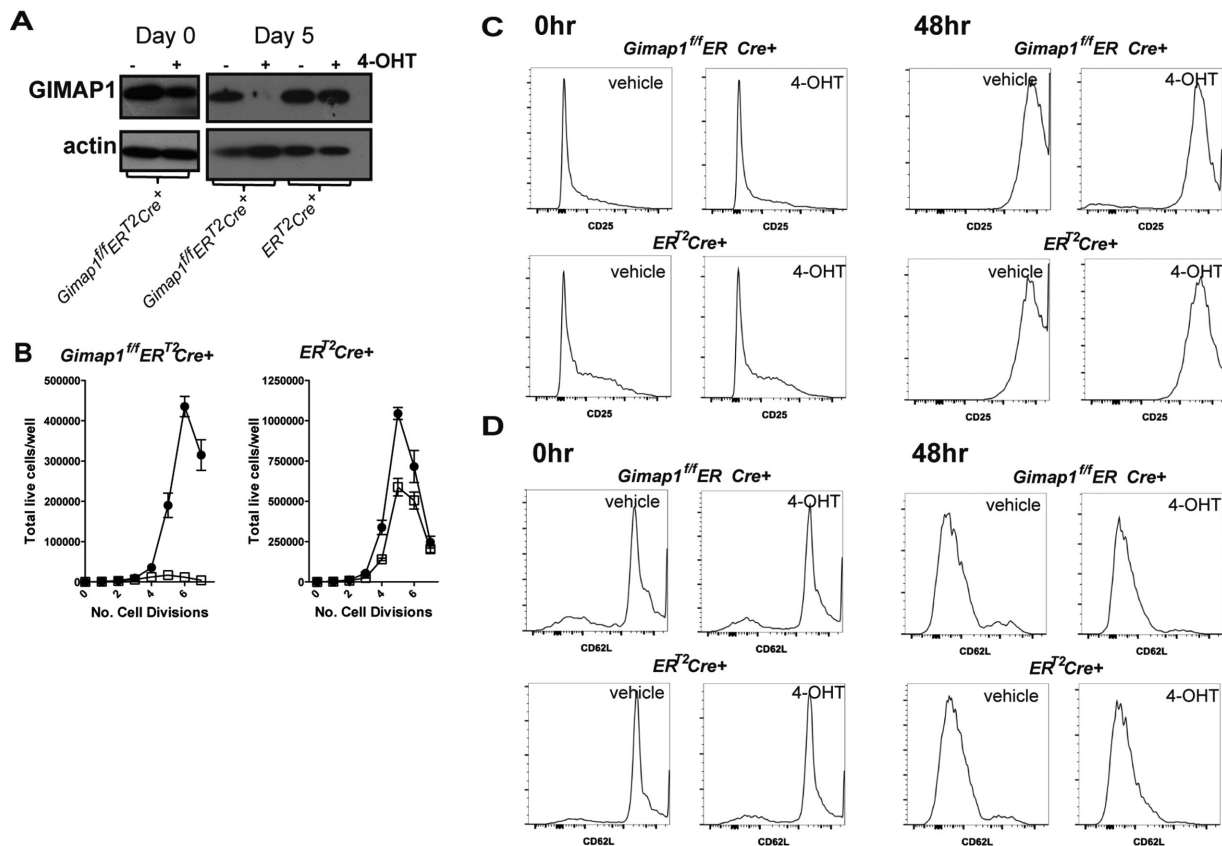
WT peripheral T cells. By using cells from *Gimap1<sup>ff</sup>ER<sup>2</sup>Cre<sup>+</sup>* animals, we were specifically able to address the role of GIMAP1 at a point after normal T-cell maturation. We chose to ablate GIMAP1 during the IL-2-driven expansion phase following T-cell receptor (TCR) stimulation, a stage where cells are undergoing rapid proliferation. *Gimap1<sup>ff</sup>ER<sup>2</sup>Cre<sup>+</sup>* and *ER<sup>2</sup>Cre<sup>+</sup>* CD4<sup>+</sup> T cells were first cultured for 5 days in IL-7 in the presence of either 4-OHT or vehicle and were then activated via CD3 and CD28 in the presence of exogenous IL-2. This design enabled T cells to be activated whilst they still expressed GIMAP1 since GIMAP1 protein was detectable at the point of activation but absent by day 5 of activation (Fig. 2A). Cells were stained with carboxyfluorescein diacetatesuccinimidyl ester (CFSE) immediately prior to activation to allow assessment of the number of divisions that

each cell underwent. Live cells were enumerated by DAPI staining and Flow count beads during flow cytometric analysis. GIMAP1-deficient CD4<sup>+</sup> T cells failed to undergo the expansion phase characteristic of T-cell activation (Fig. 2B) despite normal T-cell activation (as determined by induction of CD25 expression and down-modulation of CD62L; Fig. 2C and D). Very few live *Gimap1<sup>ff</sup>ER<sup>2</sup>Cre<sup>+</sup>* cells were detected by day 5 post-activation, in comparison to control *ER<sup>2</sup>Cre<sup>+</sup>* cells.

### The extrinsic apoptotic pathway is engaged in GIMAP1-deficient CD4<sup>+</sup> T cells

The function of GIMAPs within lymphocytes remains obscure and the mechanism by which they act remains elusive. By using the *ER<sup>2</sup>Cre<sup>+</sup>* transgene, we were able to look at the earliest events following *Gimap1* ablation, prior to ultimate cell death. We used our in vitro culture system to investigate which cell death pathways were engaged in GIMAP1-deficient CD4<sup>+</sup> T cells. First, we determined whether cells were dying via apoptosis by determining the percentage of annexin V<sup>+</sup>DAPI<sup>-</sup> (early apoptotic) cells and the kinetics of their appearance. As shown in Fig. 3A and B, apoptotic cells appeared on day 9 of culture and were only seen in 4-OHT treated *Gimap1<sup>ff</sup>ER<sup>2</sup>Cre<sup>+</sup>* T-cell cultures. Apoptosis is the result of a cascade of signals emanating from the initiator caspases, caspase-8 and caspase-9, which are themselves activated by distinct stimuli [26, 27]. Caspase-9 is activated during the intrinsic apoptotic pathway (usually the result of changes in Bcl-2 family member expression), while caspase-8 is involved in the extrinsic apoptosis pathway (activated in response to cell surface death-receptor ligation) [27]. We found no increase in the number of cells expressing activated caspase-9 when GIMAP1 was deleted (Fig. 3C and D). We also found no differences in the levels of Bcl-2 family members (Bcl-2, Bcl-x<sub>L</sub>, Mcl-1, Bim, and Bax) in GIMAP1-deficient cells at early time points (Supporting Information Fig. 1). We did find a significant increase in the percentage of cells expressing activated caspase-8 in GIMAP1-deficient cells (Fig. 3E and F). This was evident on day 7 of culture, i.e. prior to phosphatidylserine exposure (measured by annexin V binding), implicating caspase-8 as the initiator of apoptosis in GIMAP1-deficient CD4<sup>+</sup> T cells.

To verify that caspase-8 was involved in apoptosis of GIMAP1-deficient CD4<sup>+</sup> T cells, we looked at the effect of IETD, a caspase-8-specific inhibitor, on annexin V binding and cell survival of 4-OHT-treated *Gimap1<sup>ff</sup>ER<sup>2</sup>Cre<sup>+</sup>* cells. As shown in Fig. 4A & C, both IETD and QVD (a broad caspase inhibitor) inhibited apoptosis in 4-OHT-treated *Gimap1<sup>ff</sup>ER<sup>2</sup>Cre<sup>+</sup>* T cells (as determined by annexin V binding on day 9 of culture). However, neither inhibitor reversed the cell death (defined by lack of DAPI staining and cell enumeration on day 9 of culture) seen in 4-OHT-treated *Gimap1<sup>ff</sup>ER<sup>2</sup>Cre<sup>+</sup>* T cells (Fig. 4B and D). This suggested that the mechanism of cell death was either independent and/or upstream of caspase-8 activation. We went on to investigate the effect that GIMAP1 deletion has on mitochondrial membrane potential (MMP) using the dye JC-1 which exhibits mitochondrial potential-dependent



**Figure 2.** Activated CD4<sup>+</sup> T cells require GIMAP1 for proliferation. CD4<sup>+</sup> T cells were cultured in IL-7 ± 4-OHT for 5 days prior to CFSE staining and activation. (A) Expression of GIMAP1 on days 0 and 5 of activation was determined by western blot. Actin served as a loading control. Data are from a single experiment representative of three experiments performed. (B) Enumeration of live cells and the number of divisions undergone by day 5 post activation for *Gimap1*<sup>fl/fl</sup>ER<sup>T2</sup>Cre<sup>+</sup> and ER<sup>T2</sup>Cre<sup>+</sup> CD4<sup>+</sup> T cells were pre-treated with either vehicle control (●) or 4-OHT (□) prior to staining with CFSE and activation with anti-CD3 + anti-CD28 in the presence of IL-2. Dye dilution was evaluated by flow cytometry and shown as mean + SEM of three samples/replicates from one experiment representative of three experiments. (C) CD25 expression during activation. *Gimap1*<sup>fl/fl</sup>ER<sup>T2</sup>Cre<sup>+</sup> and ER<sup>T2</sup>Cre<sup>+</sup> CD4<sup>+</sup> T cells from vehicle- and 4-OHT-treated cultures were stained with anti-CD25 on day 0 and day 2 of activation and measured by flow cytometry. (D) CD62L expression during activation. *Gimap1*<sup>fl/fl</sup>ER<sup>T2</sup>Cre<sup>+</sup> and ER<sup>T2</sup>Cre<sup>+</sup> CD4<sup>+</sup> T cells from vehicle- and 4-OHT-treated cultures were stained with anti-CD62L on day 0 and day 2 of activation. (C, D) Data shown are from a single experiment representative of three experiments.

fluorescence and is widely used to monitor mitochondrial health [28]. As shown in Fig. 4E & F, there was an increase in the percentage of GIMAP1-deficient CD4<sup>+</sup> T cells with damaged mitochondria (low MMP) by day 7. This was verified by measuring the oxygen consumption rate (OCR) in these cells on day 7 of culture (Fig. 4G and H).

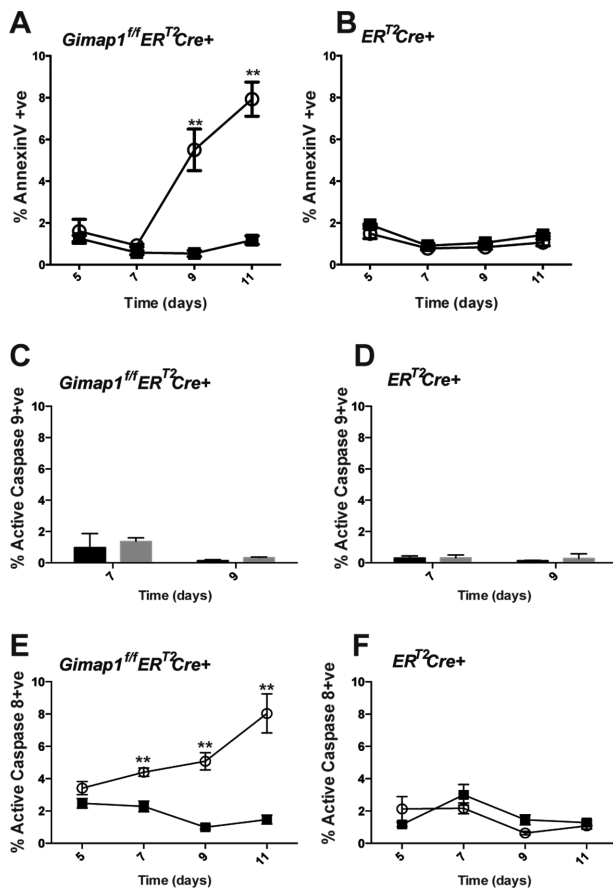
### Activation of the extrinsic apoptotic pathway in GIMAP1-deficient CD4<sup>+</sup> and CD8<sup>+</sup> T cells in vivo

We went on to verify our in vitro findings by looking at levels of active caspase-8 expression and annexin V binding in naïve CD4<sup>+</sup> and CD8<sup>+</sup> T cells *Gimap1*<sup>fl/fl</sup>CD2Cre<sup>+</sup> mice. Peripheral T cells from these animals displayed an increased proportion of early apoptotic cells (annexin V<sup>+</sup>DAPI<sup>-</sup>) and cells expressing active caspase 8 (Fig. 5A and B). Thus, it appears that the features of GIMAP1-deficient T cells that we see in our in vitro culture system mirror what occurs in vivo.

### The survival defect in GIMAP1-deficient CD4<sup>+</sup> T cells is not dependent on age

Deletion of *Gimap5* in both rats and mice results in T-cell lymphopenia, but in mice the strength of this phenotype appears to be age-dependent. At 4 weeks of age, GIMAP5-deficient mice show decreased numbers of peripheral CD4<sup>+</sup> and CD8<sup>+</sup> T cells [29]. This is followed by a further decline in T cells at 6 and 10 weeks of age. Our previous study of GIMAP1 in *Gimap1*<sup>fl/fl</sup>CD2Cre<sup>+</sup> mice had analysed T-cell numbers in 10–12 weeks old mice [21], a time point by which any age-dependent onset of lymphopenia may have already occurred. To determine whether the T-cell lymphopenia in GIMAP1-deficient mice also exhibits an age-dependent profile, we enumerated CD4<sup>+</sup> T cells in *Gimap1*<sup>fl/fl</sup>CD2Cre<sup>+</sup> and control *Gimap1*<sup>fl/fl</sup> mice at 5 and 10 weeks of age. As shown in Fig. 5C, T-cell numbers in GIMAP1-deficient mice were profoundly reduced by 5 weeks of age suggesting that the lymphopenia in GIMAP1-deficient mice is not age-dependent.





**Figure 3.** Extrinsic apoptosis in GIMAP1-deficient CD4<sup>+</sup> T cells. (A, B) CD4<sup>+</sup> T cells from (A) *Gimap1<sup>fl/fl</sup>ER<sup>T2</sup>Cre<sup>+</sup>* or (B) *ER<sup>T2</sup>Cre<sup>+</sup>* mice were cultured in IL-7 in the presence of vehicle control (■) or 4-OHT (○). The percentage of annexin V<sup>+</sup> cells within the DAPI<sup>-</sup> population of CD4<sup>+</sup> T cells was measured by flow cytometry. (C, D) CD4<sup>+</sup> T cells expressing activated caspase-9 from (C) *Gimap1<sup>fl/fl</sup>ER<sup>T2</sup>Cre<sup>+</sup>* or (D) *ER<sup>T2</sup>Cre<sup>+</sup>* mice treated with vehicle (black bars) or 4-OHT (grey bars). (E, F) CD4<sup>+</sup> T cells from (E) *Gimap1<sup>fl/fl</sup>ER<sup>T2</sup>Cre<sup>+</sup>* or (F) *ER<sup>T2</sup>Cre<sup>+</sup>* mice were cultured in IL-7 in the presence of vehicle control (■) or 4-OHT (○). The percentage of caspase-8<sup>+</sup> cells within the DAPI<sup>-</sup> population of CD4<sup>+</sup> T cells was measured by flow cytometry. Results are shown as mean ± S.E.M. for triplicate samples from a single experiment representative of three experiments performed. \*\**p* < 0.005 (paired 2-tailed Student's *t*-test).

### GIMAP1 is essential for survival of CD4<sup>+</sup> and CD8<sup>+</sup> T cells in vivo

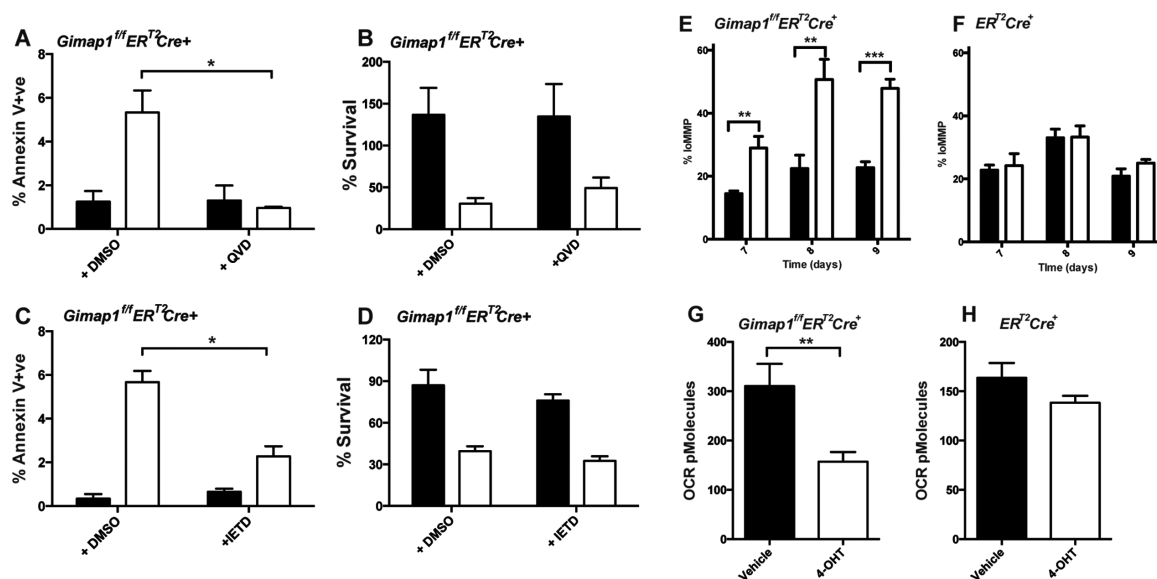
To determine if GIMAP1 is also required continuously for T-cell survival in vivo, we adoptively transferred mature, peripheral CD4<sup>+</sup> and CD8<sup>+</sup> T cells from *Gimap1<sup>fl/fl</sup>ER<sup>T2</sup>Cre<sup>+</sup>* and *ER<sup>T2</sup>Cre<sup>+</sup>* mice into replete, CD45.1-expressing congenic hosts, which were then treated with tamoxifen to ablate *Gimap1* in the *Gimap1<sup>fl/fl</sup>*-bearing donor cells. Both *Gimap1<sup>fl/fl</sup>ER<sup>T2</sup>Cre<sup>+</sup>* and *ER<sup>T2</sup>Cre<sup>+</sup>* mice were on a C57BL/6 background and expressed the CD45.2 allelic variant. In order to easily differentiate cells from the two strains, *Gimap1<sup>fl/fl</sup>ER<sup>T2</sup>Cre<sup>+</sup>* and *ER<sup>T2</sup>Cre<sup>+</sup>* lymph node cells were first stained with CFSE and CellTrace™ Violet (CTV), respectively, and then co-transferred into recipient animals. The recipients were administered tamoxifen on two consecutive days and their spleens harvested 13 days following the adoptive transfer. Splenocytes

were stained for CD4, CD8, and CD45.2, and the percentage of donor cells from each strain determined for each recipient animal. As shown in Fig. 6A–C, tamoxifen treatment resulted in a near-total loss of *Gimap1<sup>fl/fl</sup>ER<sup>T2</sup>Cre<sup>+</sup>* CD4<sup>+</sup> and CD8<sup>+</sup> T cells but had little effect on *ER<sup>T2</sup>Cre<sup>+</sup>* T cells. These results show that CD4<sup>+</sup> and CD8<sup>+</sup> T cells require continuous intrinsic GIMAP1 expression for their maintenance within the periphery.

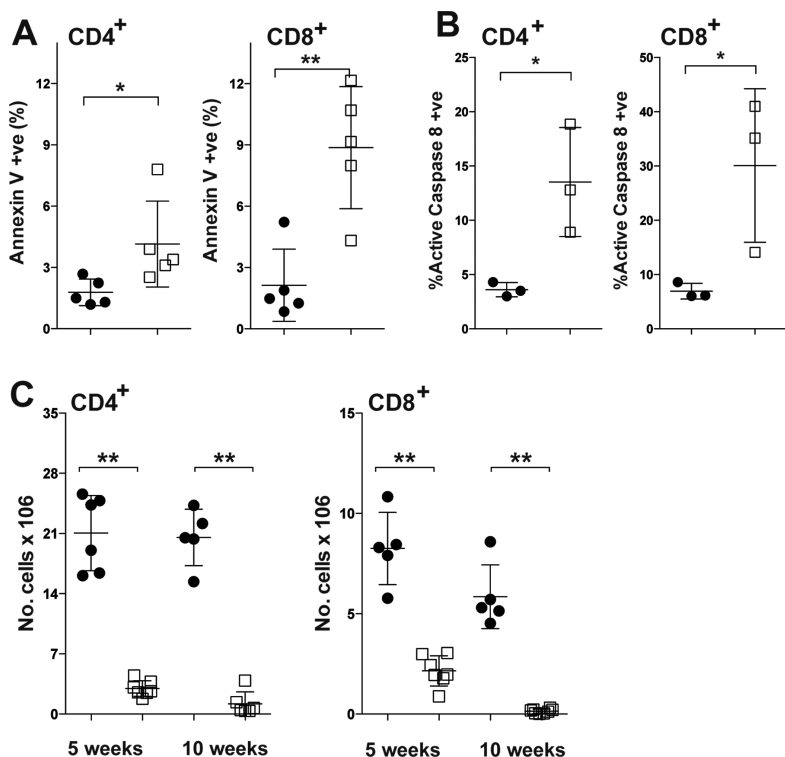
## Discussion

The critical importance of the GIMAP family GTPases in the functioning of the immune system is reflected in their association with human diseases. *Gimap* gene expression is silenced or lost in anaplastic T-cell lymphomas [30], and increased in certain types of leukemia [31]. In addition, GIMAP expression is reduced in regulatory T cells of patients with type I diabetes [32], and a single nucleotide polymorphism in the polyadenylation signal of human *Gimap5* is associated with IA-2 autoantibody formation in patients with type I diabetes and predisposes individuals to systemic lupus erythematosus [33, 34]. Similarly, gene association studies have implicated GIMAPs in other autoimmune diseases such as Behçet's disease [35] and for asthma and allergy sensitization [36]. Yet, despite these associations, we still know relatively little about GIMAPs and how they function.

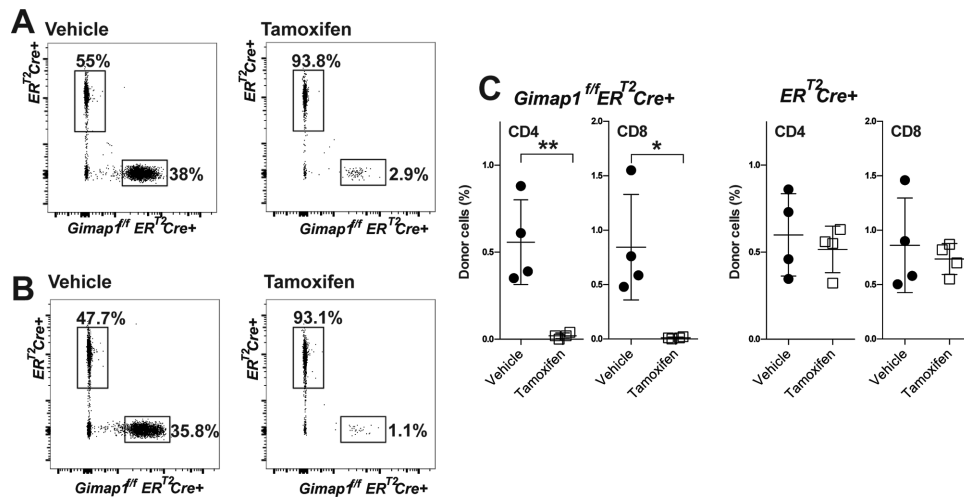
The majority of work in the GIMAP field has focused on GIMAP5 [37–40]. The structural similarities between GIMAP5 and GIMAP1 sparked our initial interest in GIMAP1. In previous work, we used conditional knockout technology to specifically delete *Gimap1* from lymphocytes and found a striking similarity in the lymphopenia observed in our *Gimap1*-deficient T cells with that seen in the BioBreeding rat strain [22]. All previous GIMAP knockout models have relied on germline gene mutation or ablation [8–10, 15–17]. However, mice bearing a homozygous germline knockout of *Gimap1*, although born in normal numbers, rarely survive more than 10 days postnatally (not shown). A further disadvantage to this method of gene ablation is that it potentially confounds the cell-intrinsic effects of the knock-out with cell-extrinsic phenotypes. Our strategy of developing *Gimap1<sup>fl/fl</sup>* mice has enabled us to examine the cell-intrinsic effects of the *Gimap1* lesion by controlling where and when the gene is ablated. For the present study, we have generated a tamoxifen-inducible *Gimap1* knockout model that allows temporal control of gene ablation. A unique advantage gained from using the *Gimap1<sup>fl/fl</sup>ER<sup>T2</sup>Cre* model is that it allowed us to assay protein turnover and the proficiency of gene ablation. By culturing *Gimap1<sup>fl/fl</sup>ER<sup>T2</sup>Cre* CD4<sup>+</sup> T cells in vitro, we found that a low dose of 4-OHT was sufficient to ablate the floxed *Gimap1* DNA fragment rapidly and completely. Surprisingly, GIMAP1 protein turnover took 6–7 days. In this system, loss of GIMAP1 resulted in cell death. We confirmed this finding in vivo by adoptively transferring *Gimap1<sup>fl/fl</sup>ER<sup>T2</sup>Cre* or *ER<sup>T2</sup>Cre* lymphocytes into congenic recipient animals and administering tamoxifen. This allowed us to monitor the effect of GIMAP1 deletion on CD4<sup>+</sup> and CD8<sup>+</sup> T cells and extended our finding that GIMAP1 maintains the survival of CD4<sup>+</sup> T cells in vitro. The loss of



**Figure 4.** Caspase-3 and caspase-8 inhibition prevent apoptosis induction in GIMAP1-deficient CD4<sup>+</sup> T cells. (A, B) CD4<sup>+</sup> T cells from *Gimap1<sup>fl/fl</sup>ER<sup>2</sup>Cre<sup>+</sup>* mice were cultured in IL-7 in the presence of vehicle control (filled bars) or 4-OHT (open bars) plus either DMSO or QVD. (A) The percentage of annexin V<sup>+</sup> cells within the DAPI<sup>-</sup> population of CD4<sup>+</sup> T cells was measured by flow cytometry. (B) Percentage survival on day 9 of culture (relative to day 5 of culture) was determined by enumerating the number of DAPI-ve cells. (C, D) CD4<sup>+</sup> T cells from *Gimap1<sup>fl/fl</sup>ER<sup>2</sup>Cre<sup>+</sup>* mice were cultured in IL-7 in the presence of vehicle control (filled bars) or 4-OHT (open bars) plus either DMSO or IETD. (C) The percentage of annexin V<sup>+</sup> cells within the DAPI<sup>-</sup> population of CD4<sup>+</sup> T cells was measured by flow cytometry. (D) Percentage survival on day 9 of culture (relative to day 5 of culture) was determined by enumerating the number of DAPI-ve cells. (E, F) CD4<sup>+</sup> T cells from (E) *Gimap1<sup>fl/fl</sup>ER<sup>2</sup>Cre<sup>+</sup>* or (F) *ER<sup>2</sup>Cre<sup>+</sup>* mice were cultured in IL-7 in the presence of vehicle control (filled bars) or 4-OHT (open bars). The percentage of cells with lo MMP within the DAPI<sup>-</sup> population of CD4<sup>+</sup> T cells was measured by flow cytometry. (G, H) CD4<sup>+</sup> T cells from (G) *Gimap1<sup>fl/fl</sup>ER<sup>2</sup>Cre<sup>+</sup>* or (H) *ER<sup>2</sup>Cre<sup>+</sup>* mice were cultured in IL-7 in the presence of vehicle control (filled bars) or 4-OHT (open bars) for 7 days prior to determining oxygen consumption rate with a Seahorse analyzer. Results are shown as mean ± SEM for triplicate samples from a single experiment representative of three experiments performed. \**p* < 0.05, \*\**p* < 0.005, \*\*\**p* < 0.0005 (paired 2-tailed Student's *t*-test).



**Figure 5.** T cells from GIMAP1-deficient mice are undergoing extrinsic apoptosis. (A) CD4<sup>+</sup> and CD8<sup>+</sup> splenocytes from *Gimap1<sup>fl/fl</sup>CD2Cre<sup>+</sup>* (□) and control *Gimap1<sup>fl/fl</sup>* (●) mice were stained with annexin V and DAPI. The percentages of annexin V<sup>+</sup> cells within the DAPI<sup>-</sup> population for individual mice were evaluated by flow cytometry and are shown as mean ± S.D. and are from a single experiment representative of three experiments performed. (B) CD4<sup>+</sup> and CD8<sup>+</sup> splenocytes from *Gimap1<sup>fl/fl</sup>CD2Cre<sup>+</sup>* (□) and control *Gimap1<sup>fl/fl</sup>* (●) mice were stained for activated caspase-8 and DAPI. The percentage of cells expressing activated caspase-8 within the DAPI<sup>-</sup> population for individual mice is shown as mean ± SD and is from a single experiment representative of three experiments performed. (C) CD4<sup>+</sup> splenocytes from 5 and 10 week-old *Gimap1<sup>fl/fl</sup>CD2Cre<sup>+</sup>* and *Gimap1<sup>fl/fl</sup>* mice were determined by flow cytometry. Results are presented as numbers of CD4<sup>+</sup> (left) and CD8<sup>+</sup> (right) T cells per spleen for *Gimap1<sup>fl/fl</sup>ER<sup>2</sup>Cre<sup>+</sup>* (□) and control *Gimap1<sup>fl/fl</sup>* (●) mice and shown as the mean ± S.D. Data are from a single experiment representative of three experiments performed. \**p* < 0.05, \*\**p* < 0.01 (unpaired 2-tailed Student's *t*-test).



**Figure 6.** GIMAP1 is required for survival of mature lymphocytes in vivo. (A–C) Lymph node cells from *Gimap1*<sup>f/f</sup>ER<sup>T2</sup>Cre<sup>+</sup> and control ER<sup>T2</sup>Cre<sup>+</sup> mice were stained with CFSE and Cell Trace<sup>TM</sup> Violet, respectively. Cell suspensions from each strain were then mixed and co-injected i.v. into replete C57BL6/SJL-PtprcaPepcb/BoyJ (CD45.1<sup>+</sup>) mice. Recipient mice were injected (i.p. or s.c.) with tamoxifen or vehicle control on days 1 and 2 and the number of remaining transferred cells determined 13 days post cell-transfer. (A, B) Representative flow cytometry plots showing the percentage of transferred (A) CD4<sup>+</sup> and (B) CD8<sup>+</sup> cells from *Gimap1*<sup>f/f</sup>ER<sup>T2</sup>Cre<sup>+</sup> or ER<sup>T2</sup>Cre<sup>+</sup> mice following vehicle or tamoxifen treatment. Data shown are from a single experiment representative of three experiments performed. (C) Each symbol represents the percentage of adoptively transferred *Gimap1*<sup>f/f</sup>ER<sup>T2</sup>Cre<sup>+</sup> or ER<sup>T2</sup>Cre<sup>+</sup> CD4<sup>+</sup> and CD8<sup>+</sup> cells remaining after vehicle (●) or tamoxifen (□) treatment for individual mice, with the mean ± S.D. shown. Each panel is of two pooled experiments and is representative of three independent experiments. \**p* < 0.05, \*\**p* < 0.005 (unpaired 2-tailed Student's *t*-test).

GIMAP1 similarly compromised the survival of *Gimap1*<sup>f/f</sup>ER<sup>T2</sup>Cre<sup>+</sup> CD8<sup>+</sup> T cells, both in vivo and in vitro. Thus, mature T cells require continuous GIMAP1 protein expression for their survival. By ablating GIMAP1 protein during the expansion phase of T-cell activation we also showed that GIMAP1 is critical for the survival of activated T cells. Previous work with GIMAP5-deficient T cells had shown that antigenic stimulation could rescue GIMAP5-deficient T cells from death [12, 24, 25]. Thus, the cells remaining in the periphery of GIMAP5-deficient rodents are mainly activated lymphocytes [25, 41, 42]. These activated (including potentially autoreactive) cells have a survival advantage, which allows their proliferation in the lymphopenic environment and can mediate autoimmune diseases evident in strains of GIMAP5-deficient rodents [9, 43]. In contrast, we find that GIMAP1-deficient T cells cannot be rescued from cell death by TCR activation (data not shown) and that activated T cells are still susceptible to death induced by absence of GIMAP1. This finding may explain the lack of autoimmunity observed in the *Gimap1*<sup>f/f</sup>CD2Cre<sup>+</sup> strain of mice and suggests that, despite their structural similarities, GIMAP1 and GIMAP5 perform discrete functions in T cells. In recent work we have looked at the effect of GIMAP1 deletion in B cells and also find that both resting and activated B cells depend on GIMAP1 for their survival [44]. Interestingly, attrition in the T-cell compartments of GIMAP5-deficient mice is aggravated as the animals age [29]. This is not apparent in *Gimap1*<sup>f/f</sup>CD2Cre animals and again suggests that GIMAP1 and GIMAP5 have different specific roles in regulating lymphocyte survival.

Elevated levels of phosphatidylserine exposure and caspase-3 activity in GIMAP1-deficient CD4<sup>+</sup> T lymphocytes initially sug-

gested that these cells were dying by apoptosis. However, the apoptotic pathway by which cells were dying was unclear. The reduction of GIMAP1 protein in cultured CD4<sup>+</sup> T cells led to mitochondrial depolarization followed by caspase-8 activation, which suggested that both the intrinsic and extrinsic apoptotic pathways were engaged [26]. Ordinarily, the mitochondrial outer membrane is permeabilized by Bax and Bak as part of the intrinsic apoptotic pathway, in response to perturbations in levels of pro- and anti-apoptotic Bcl-2 family members such as Bcl-2, Mcl-1, Bim and PUMA [46]. This releases cytochrome c, which forms an integral part of the apoptosome, the caspase-9 recruitment and activating platform. GIMAPs 3, 4, and 5 have been shown to interact with members of the Bcl-2 family [14, 45]. GIMAP4 co-immunoprecipitates with Bax [14]. GIMAP5 has been reported to stabilize the interaction between HSC70 and either Mcl-1 or Bcl-2 in B cell progenitors, without which the Bcl-2 family members are rapidly degraded [45]. Both GIMAPs 3 and 5 also directly bind Bcl-x<sub>L</sub>, Bax, Bak, Bad and Bim [14]. However, the *Gimap1* lesion did not appear to affect expression of members of this family in CD4<sup>+</sup> T cells and we saw no activation of caspase-9. Apoptosis in GIMAP5-deficient T cells is also not prevented by caspase-9 inhibitors but is prevented by inhibitors for caspase-3 and caspase-8 [47]. Together, these data suggest that the extrinsic apoptosis pathway is activated in GIMAP1 or GIMAP5-deficient cells and that the intrinsic pathway remains inert.

In agreement with this finding, the few CD4<sup>+</sup> and CD8<sup>+</sup> T cells remaining in *Gimap1*<sup>f/f</sup>CD2Cre<sup>+</sup> mice demonstrated elevated levels of activated caspase-8 and annexin V, confirming our in vitro findings. The extrinsic apoptotic pathway is triggered by healthy cells instructing damaged or infected cells to die and may

also be a back-up mechanism for cells that have escaped deletion by the intrinsic pathway [48]. We postulate that the loss of GIMAP1 results in mitochondrial damage, which triggers the activation of caspase-8. However, the initial injury (mitochondrial damage) is one from which the cells cannot recover. Therefore, caspase-8 inhibition can prevent the induction of apoptosis (as measured by annexin V binding), but cannot prevent the inevitable cell death that results from mitochondrial damage. It is unclear how GIMAP1 deficiency causes mitochondrial damage. GIMAP1 is localized to the trans-Golgi network [49]. A GIMAP1 lesion may destabilize the Golgi, resulting in the breakdown of endocytic traffic to and from this compartment and leading to the premature release of cathepsins and lysosomal hydrolases into the cytosol (cathepsin D, released from lysosomes during apoptosis induction, has been shown to activate caspase-8 [50].) These events could diminish the efficiency of degradative (lysosomal) pathways including mitophagy, and so lead to the accumulation of damaged mitochondria. It is worth noting findings on the IFN- $\gamma$ -inducible regulatory immunity-related GTPase (IRG) *Irgm1*, which is mainly localized at the lysosomal and Golgi membranes. Interestingly, deletion of *Irgm1* results in a lympho-myeloid collapse in response to infection and in vitro is associated with reduced lysosomal acidity and a disruption of autophagic flux [51, 52].

Another puzzling feature of the GIMAP1-deficiency phenotype has been why the T cells mainly succumb to death in the periphery. GIMAP1 is highly expressed during all stages of T-cell development in the thymus yet only the most mature SP thymocytes show a survival defect [22, 49]. Furthermore, whilst *Gimap1<sup>f/f</sup>CD2Cre<sup>+</sup>* mice have around 30% of mature SP thymocytes, they have <5% of peripheral CD4<sup>+</sup> T cells [22]. This suggests that there is a greater requirement for GIMAP1 in the periphery. It is possibly that the mechanism through which GIMAP1 acts is only active in mature lymphocytes or that there is a factor in the periphery that is dependent upon GIMAP1 function to aid long term survival of mature CD4<sup>+</sup> T cells. Recent work has suggested that loss of mitochondrial electron chain transport function has a greater effect on peripheral T cells than on thymocytes [53]. Similar to GIMAP1 deletion, conditional ablation of apoptosis inducing factor (AIF) results in normal thymocyte development but greatly reduced numbers of peripheral T cells, with CD8<sup>+</sup> T cells being more affected than CD4<sup>+</sup> T cells [53]. It is tempting to speculate that the differential susceptibility of peripheral T cells to the absence of GIMAP1 is similarly related to the requirements of maintaining mitochondrial function and health.

## Materials and methods

### Animals

Mice were bred and maintained in specific pathogen-free conditions at The Babraham Institute. Husbandry and experimentation complied with existing United Kingdom Home Office and European Union legislation, as well as local standards, as approved by the Babraham Institute Animal Welfare and Ethical Review

Body. *Gimap1<sup>f/f</sup>* mice (described previously [22]), bearing a floxed *Gimap1* allele, were crossed with *ER<sup>T2</sup>Cre<sup>+</sup>* mice (obtained from Thomas Ludwig; [54]) to generate *Gimap1<sup>f/f</sup>ER<sup>T2</sup>Cre<sup>+</sup>* mice, enabling conditional ablation of *Gimap1* upon administration of tamoxifen or its derivative, 4-OHT.

In adoptive-transfer experiments, lymph node cells from *Gimap1<sup>f/f</sup>ER<sup>T2</sup>Cre<sup>+</sup>* and *ER<sup>T2</sup>Cre<sup>+</sup>* mice were stained with CFDA-SE (Life Technologies) and CTV (Life Technologies), respectively, and then mixed in a 1:2 ratio (*Gimap1<sup>f/f</sup>ER<sup>T2</sup>Cre<sup>+</sup>*:*ER<sup>T2</sup>Cre<sup>+</sup>*) prior to i.v. injection of  $5 \times 10^6$  cells/mouse into B6.SJL-*Ptprca Pepcb/BoyJ* mice. Mice were treated with 200  $\mu$ g tamoxifen/g bodyweight in sunflower oil, or vehicle control, i.p. or s.c. on days 1 and 2 following adoptive cell transfer. On day 13 after cell transfer, mice were killed and the numbers of transferred cells present in peripheral blood and spleen were determined.

### PCR and western blot analysis

The presence of the *Gimap1<sup>f/f</sup>* allele and deletion of *Gimap1* were determined by PCR as previously described [22]. Ablation of GIMAP1 protein was determined by western blot as previously described [22].

### CD4<sup>+</sup> T-cell enrichment and culture

CD4<sup>+</sup> lymphocytes were purified from spleens and lymph nodes of *Gimap1<sup>f/f</sup>ER<sup>T2</sup>Cre<sup>+</sup>* and *ER<sup>T2</sup>Cre<sup>+</sup>* mice by negative selection. In brief, erythrocytes were lysed prior to incubation of cells with biotinylated anti-CD19, anti-IgD, anti-CD8, anti-CD25, anti-NK1.1, anti- $\gamma\delta$ TCR, anti-Gr1, and anti-CD11b. Cells were washed and then incubated with anti-biotin MACS beads prior to depletion of bead-coated cells by AutoMACS (MiltenyiBiotec). Cells were then cultured at  $1-2 \times 10^6$  cells/ml in 10% FCS IMDM (culture medium) with 5 ng/mL IL-7 (Peprotech) with vehicle (DMSO) or 50 nM 4-OHT. After 48 h, cells were washed and resuspended at  $1-2 \times 10^6$  cells/mL in culture medium with 5ng/mL IL-7 for a further 2–5 days. Q-VD-OPh hydrate (QVD; Calbiochem) and Z-Ile-Glu(O-ME)-Thr-Asp(O-Me) fluoromethyl ketone (IETD; Sigma Aldrich) were added to give final concentrations of 10  $\mu$ g/mL and 100  $\mu$ g/mL, respectively, on days 6 and 8 of culture. To determine proliferation, cells were first stained with CFSE according to the manufacturer's instructions. Cells were then cultured at a concentration of  $1-2 \times 10^6$  cells/mL, in anti-CD3 (eBioscience)-coated 24- or 96-well plates with anti-CD28 (eBioscience; 100ng/mL) plus IL-2 (RnD Systems; 10 ng/mL) for 24–120 h prior to analysis by flow cytometry. To determine oxygen consumption rate, a Seahorse Extracellular Flux (XF) 24 Analyser (Seahorse Bioscience) was used, as previously described [16].

### Flow cytometry

Single cell suspensions then stained with fluorochrome-conjugated anti-CD4, anti-CD8 and anti-CD25 mAbs (BD



Biosciences and eBioscience). For detection of activated caspases, CaspGLOW Fluorescein Active Caspase-3, Caspase-8 or Caspase-9 kits (Biovision) were used according to the manufacturer's instructions. Cells were stained for annexin V and DAPI by incubating with annexin V conjugates (BD Biosciences) and DAPI (Sigma) in annexin V binding buffer (BD Biosciences). To determine mitochondrial health, cells were incubated with JC-1 (Molecular Probes) for 30 min at 37°C prior to analysis. Cells were counted using either a CASY<sup>®</sup> cell counter and analyzer system (Roche Innovatis AG) or Flow Count beads (Sigma) during flow cytometric analysis. Flow cytometry was performed using a BD LSRII or Fortessa cell analyser (BD), and data were analyzed using Flowjo analytic software.

**Acknowledgements:** We thank Thomas Ludwig for *ERT<sup>2</sup>Cre<sup>+</sup>* mice, members of the Babraham Biological Services Unit Facility and members of the Babraham Flow Cytometry Facility. This work was supported by a project grant from the Medical Research Council (MR/J001856/1) and ISPG funding from the Biotechnology and Biological Sciences Research Council (BBS/E/B/000C0409). I.A. was supported by the E.U. "Leonardo da Vinci" programme Unipharm-Graduates scheme. P.D. was supported by a BBSRC studentship.

**Conflict of interest:** The authors declare no financial or commercial conflict of interest.

## References

- Tough, D. F. and Sprent, J., Turnover of naive- and memory-phenotype T cells. *J. Exp. Med.* 1994. 179: 1127–1135.
- Sprent, J., Schaefer, M., Hurd, M., Surh, C. D. and Ron, Y., Mature murine B and T cells transferred to SCID mice can survive indefinitely and many maintain a virgin phenotype. *J. Exp. Med.* 1991. 174: 717–728.
- Michie, C. A., McLean, A., Alcock, C. and Beverley, P. C., Lifespan of human lymphocyte subsets defined by CD45 isoforms. *Nature* 1992. 360: 264–265.
- Surh, C. D. and Sprent, J., Homeostasis of naive and memory T cells. *Immunity* 2008. 29: 848–862.
- Sprent, J. and Surh, C. D., Normal T cell homeostasis: the conversion of naive cells into memory-phenotype cells. *Nat. Immunol.* 2011. 12: 478–484.
- Barlow, J. H., Faryabi, R. B., Callen, E., Wong, N., Malhowski, A., Chen, H. T., Gutierrez-Cruz, G. et al., Identification of early replicating fragile sites that contribute to genome instability. *Cell* 2013. 152: 620–632.
- Reuber, T. L. and Ausubel, F. M., Isolation of Arabidopsis genes that differentiate between resistance responses mediated by the RPS2 and RPM1 disease resistance genes. *Plant Cell* 1996. 8: 241–249.
- Schulteis, R. D., Chu, H., Dai, X., Chen, Y., Edwards, B., Haribhai, D., Williams, C. B. et al., Impaired survival of peripheral T cells, disrupted NK/NKT cell development, and liver failure in mice lacking Gimap5. *Blood* 2008. 112: 4905–4914.
- Barnes, M. J., Aksoylar, H., Krebs, P., Bourdeau, T., Arnold, C. N., Xia, Y., Khovananath, K. et al., Loss of T cell and B cell quiescence precedes the onset of microbial flora-dependent wasting disease and intestinal inflammation in Gimap5-deficient mice. *J. Immunol.* 2010. 184: 3743–3754.
- Yano, K., Carter, C., Yoshida, N., Abe, T., Yamada, A., Nitta, T., Ishimaru, N. et al., Gimap3 and Gimap5 cooperate to maintain T-cell numbers in the mouse. *Eur. J. Immunol.* 2014. 44: 561–572.
- Elder, M. E. and Maclaren, N. K., Identification of profound peripheral T lymphocyte immunodeficiencies in the spontaneously diabetic BB rat. *J. Immunol.* 1983. 130: 1723–1731.
- Hernandez-Hoyos, G., Joseph, S., Miller, N. G. and Butcher, G. W., The lymphopenia mutation of the BB rat causes inappropriate apoptosis of mature thymocytes. *Eur. J. Immunol.* 1999. 29: 1832–1841.
- Chen, Y., Yu, M., Dai, X., Zogg, M., Wen, R., Weiler, H. and Wang, D., Critical role for Gimap5 in the survival of mouse hematopoietic stem and progenitor cells. *J. Exp. Med.* 2011. 208: 923–935.
- Nitta, T., Nasreen, M., Seike, T., Goji, A., Ohigashi, I., Miyazaki, T., Ohta, T. et al., IAN family critically regulates survival and development of T lymphocytes. *PLoS Biol.* 2006. 4: e103.
- Schnell, S., Demolliere, C., van den Berk, P. and Jacobs, H., Gimap4 accelerates T-cell death. *Blood* 2006. 108: 591–599.
- Webb, L. M., Pascall, J. C., Hepburn, L., Carter, C., Turner, M. and Butcher, G. W., Generation and characterisation of mice deficient in the multi-GTPase domain containing protein, GIMAP8. *PLoS One* 2014. 9: e110294.
- Carter, C., Dion, C., Schnell, S., Coadwell, W. J., Graham, M., Hepburn, L., Morgan, G. et al., A natural hypomorphic variant of apoptosis regulator GIMAP4/IAN1. *J. Immunol.* 2007. 179: 1784–1795.
- Krucken, J., Schmitt-Wrede, H. P., Markmann-Mulisch, U. and Wunderlich, F., Novel gene expressed in spleen cells mediating acquired testosterone-resistant immunity to Plasmodium chabaudi malaria. *Biochem. Biophys. Res. Commun.* 1997. 230: 167–170.
- Kannan, K., Kaminski, N., Rechavi, G., Jakob-Hirsch, J., Amariglio, N. and Givol, D., DNA microarray analysis of genes involved in p53 mediated apoptosis: activation of Apaf-1. *Oncogene*. 2001. 20: 3449–3455.
- Filen, J. J., Filen, S., Moulder, R., Tuomela, S., Ahlfors, H., West, A., Kouvonon, P. et al., Quantitative proteomics reveals GIMAP family proteins 1 and 4 to be differentially regulated during human T helper cell differentiation. *Mol. Cell Proteomics* 2009. 8: 32–44.
- Saunders, A., Lamb, T., Pascall, J., Hutchings, A., Dion, C., Carter, C., Hepburn, L. et al., Expression of GIMAP1, a GTPase of the immunity-associated protein family, is not up-regulated in malaria. *Malar J.* 2009. 8: 53.
- Saunders, A., Webb, L. M., Janas, M. L., Hutchings, A., Pascall, J., Carter, C., Pugh, N. et al., Putative GTPase GIMAP1 is critical for the development of mature B and T lymphocytes. *Blood* 2010. 115: 3249–3257.
- Jullien, N., Goddard, I., Selmi-Ruby, S., Fina, J. L., Cremer, H. and Herman, J. P., Use of ERT2-iCre-ERT2 for conditional transgenesis. *Genesis* 2008. 46: 193–199.
- Lang, J. A., Kominski, D., Bellgrau, D. and Scheinman, R. I., Partial activation precedes apoptotic death in T cells harboring an IAN gene mutation. *Eur. J. Immunol.* 2004. 34: 2396–2406.
- Ramanathan, S., Norwich, K. and Poussier, P., Antigen activation rescues recent thymic emigrants from programmed cell death in the BB rat. *J. Immunol.* 1998. 160: 5757–5764.
- Tait, S. W. and Green, D. R., Mitochondria and cell death: outer membrane permeabilization and beyond. *Nat. Rev. Mol. Cell Biol.* 2010. 11: 621–632.

- 27 Green, D. R. and Llambi, F., Cell Death Signaling. *Cold Spring Harb. Perspect Biol.* 2015. 7: pii: a006080.
- 28 Cossarizza, A. and Salvioli, S., Flow cytometric analysis of mitochondrial membrane potential using JC-1. *Curr. Protoc. Cytom.* 2001. Chapter 9: Unit 9 14.
- 29 Aksoylar, H. I., Lampe, K., Barnes, M. J., Plas, D. R. and Hoebe, K., Loss of immunological tolerance in Gimap5-deficient mice is associated with loss of Foxo in CD4+ T cells. *J. Immunol.* 2012. 188: 146–154.
- 30 Eckerle, S., Brune, V., Doring, C., Tiacci, E., Bohle, V., Sundstrom, C., Kodet, R. et al., Gene expression profiling of isolated tumour cells from anaplastic large cell lymphomas: insights into its cellular origin, pathogenesis and relation to Hodgkin lymphoma. *Leukemia* 2009. 23: 2129–2138.
- 31 Zenz, T., Roessner, A., Thomas, A., Frohling, S., Dohner, H., Calabretta, B. and Daheron, L., hlan5: the human ortholog to the rat Ian4/Iddm1/lyp is a new member of the Ian family that is overexpressed in B-cell lymphoid malignancies. *Genes Immun.* 2004. 5: 109–116.
- 32 Jailwala, P., Waukau, J., Glisic, S., Jana, S., Ehlenbach, S., Hessner, M., Alemzadeh, R. et al., Apoptosis of CD4+ CD25(high) T cells in type 1 diabetes may be partially mediated by IL-2 deprivation. *PLoS One* 2009. 4: e6527.
- 33 Hellquist, A., Zucchelli, M., Kivinen, K., Saarialho-Kere, U., Koskenmies, S., Widen, E., Julkunen, H. et al., The human GIMAP5 gene has a common polyadenylation polymorphism increasing risk to systemic lupus erythematosus. *J. Med. Genet.* 2007. 44: 314–321.
- 34 Lim, M. K., Sheen, D. H., Kim, S. A., Won, S. K., Lee, S. S., Chae, S. C., Chung, H. T. et al., IAN5 polymorphisms are associated with systemic lupus erythematosus. *Lupus*. 2009. 18: 1045–1052.
- 35 Lee, Y. J., Horie, Y., Wallace, G. R., Choi, Y. S., Park, J. A., Choi, J. Y., Song, R. et al., Genome-wide association study identifies GIMAP as a novel susceptibility locus for Behcet's disease. *Ann. Rheum. Dis.* 2013. 72: 1510–1516.
- 36 Heinonen, M. T., Laine, A. P., Soderhall, C., Gruzjeva, O., Rautio, S., Melen, E., Pershagen, G. et al., GIMAP GTPase family genes: potential modifiers in autoimmune diabetes, asthma, and allergy. *J. Immunol.* 2015. 194: 5885–5894.
- 37 Hornum, L., Romer, J. and Markholst, H., The diabetes-prone BB rat carries a frameshift mutation in Ian4, a positional candidate of Iddm1. *Diabetes* 2002. 51: 1972–1979.
- 38 MacMurray, A. J., Moralejo, D. H., Kwitek, A. E., Rutledge, E. A., Van Yserloo, B., Gohlke, P., Speros, S. J. et al., Lymphopenia in the BB rat model of type 1 diabetes is due to a mutation in a novel immune-associated nucleotide (Ian)-related gene. *Genome Res.* 2002. 12: 1029–1039.
- 39 Greiner, D. L., Shultz, L. D., Rossini, A. A., Mordes, J. P., Handler, E. S. and Rajan, T. V., Recapitulation of normal and abnormal BB rat immune system development in scid mouse/rat lymphohemopoietic chimeras. *J. Clin. Invest.* 1991. 88: 717–719.
- 40 Groen, H., Klatter, F. A., Brons, N. H., Mesander, G., Nieuwenhuis, P. and Kampinga, J., Abnormal thymocyte subset distribution and differential reduction of CD4+ and CD8+ T cell subsets during peripheral maturation in diabetes-prone BioBreeding rats. *J. Immunol.* 1996. 156: 1269–1275.
- 41 Whalen, B. J., Greiner, D. L., Mordes, J. P. and Rossini, A. A., Adoptive transfer of autoimmune diabetes mellitus to athymic rats: synergy of CD4+ and CD8+ T cells and prevention by RT6+ T cells. *J. Autoimmun.* 1994. 7: 819–831.
- 42 Zadeh, H. H., Greiner, D. L., Wu, D. Y., Tausche, F. and Goldschneider, I., Abnormalities in the export and fate of recent thymic emigrants in diabetes-prone BB/W rats. *Autoimmunity* 1996. 24: 35–46.
- 43 Cousins, L., Graham, M., Tooze, R., Carter, C., Miller, J. R., Powrie, F. M., Macpherson, G. G. et al., Eosinophilic bowel disease controlled by the BB rat-derived lymphopenia/Gimap5 gene. *Gastroenterology* 2006. 131: 1475–1485.
- 44 Webb, L. M., Datta, P., Bell, S. E., Kitamura, D., Turner, M. and Butcher, G. W., GIMAP1 is essential for the survival of naive and activated B cells in vivo. *J. Immunol.* 2016. 196: 207–216.
- 45 Chen, X. L., Serrano, D., Mayhue, M., Wieden, H. J., Stankova, J., Boulay, G., Ilangumaran, S. et al., GTPase of the immune-associated nucleotide-binding protein 5 (GIMAP5) regulates calcium influx in T-lymphocytes by promoting mitochondrial calcium accumulation. *Biochem. J.* 2013. 449: 353–364.
- 46 Renault, T. T. and Chipuk, J. E., Getting away with murder: how does the BCL-2 family of proteins kill with immunity? *Ann. N. Y. Acad. Sci.* 2013. 1285: 59–79.
- 47 Pandarpurkar, M., Wilson-Fritch, L., Corvera, S., Markholst, H., Hornum, L., Greiner, D. L., Mordes, J. P. et al., Ian4 is required for mitochondrial integrity and T cell survival. *Proc. Natl. Acad. Sci. USA* 2003. 100: 10382–10387.
- 48 Bouillet, P. and O'Reilly, L. A., CD95, BIM and T cell homeostasis. *Nat. Rev. Immunol.* 2009. 9: 514–519.
- 49 Wong, V. W., Saunders, A. E., Hutchings, A., Pascall, J. C., Carter, C., Bright, N. A., Walker, S. A. et al., The autoimmunity-related GIMAP5 GTPase is a lysosome-associated protein. *Self Nonself* 2010. 1: 259–268.
- 50 Droga-Mazovec, G., Bojic, L., Petelin, A., Ivanova, S., Romih, R., Repnik, U., Salvesen, G. S. et al., Cysteine cathepsins trigger caspase-dependent cell death through cleavage of bid and antiapoptotic Bcl-2 homologues. *J. Biol. Chem.* 2008. 283: 19140–19150.
- 51 Springer, H. M., Schramm, M., Taylor, G. A. and Howard, J. C., Irgm1 (LRG-47), a regulator of cell-autonomous immunity, does not localize to mycobacterial or listerial phagosomes in IFN-gamma-induced mouse cells. *J. Immunol.* 2013. 191: 1765–1774.
- 52 Maric-Biresev, J., Hunn, J. P., Krut, O., Helms, J. B., Martens, S. and Howard, J. C., Loss of the interferon-gamma-inducible regulatory immunity-related GTPase (IRG), Irgm1, causes activation of effector IRG proteins on lysosomes, damaging lysosomal function and predicting the dramatic susceptibility of Irgm1-deficient mice to infection. *BMC Biol.* 2016. 14: 33.
- 53 Milasta, S., Dillon, C. P., Sturm, O. E., Verbist, K. C., Brewer, T. L., Quarato, G., Brown, S. A. et al., Apoptosis-inducing-factor-dependent mitochondrial function is required for T cell but not B cell function. *Immunity* 2016. 44: 88–102.
- 54 de Luca, C., Kowalski, T. J., Zhang, Y., Elmquist, J. K., Lee, C., Kilimann, M. W., Ludwig, T. et al., Complete rescue of obesity, diabetes, and infertility in db/db mice by neuron-specific LEPR-B transgenes. *J. Clin. Invest.* 2005. 115: 3484–3493.

Full correspondence: Dr. Geoffrey W. Butcher, Laboratory of Lymphocyte Signalling and Development, The Babraham Institute, Cambridge, United Kingdom, CB22 3AT  
e-mail: geoff.butcher@babraham.ac.uk

Received: 11/7/2016

Revised: 8/9/2016

Accepted: 26/10/2016

Accepted article online: 28/10/2016