



Rapid and convenient detection of SARS-CoV-2 using a colorimetric triple-target reverse transcription loop-mediated isothermal amplification method

Zhu Yang^{1,*}, Nicole Y. Liu^{1,*}, Zhiwei Zhu², Minmin Xiao³, Shuzhi Zhong⁴, Qiqi Xue², Lina Nie³ and Jinhong Zhao²

¹ Department of Medical Microbiology and Immunology, Wannan Medical College, Wuhu, Anhui, China

² Department of Parasitology, Wannan Medical College, Wuhu, Anhui, China

³ Clinical Laboratory, The Second People's Hospital of Wuhu City, Wuhu, Anhui, China

⁴ Department of Histology and Embryology, Wannan Medical College, Wuhu, Anhui, China

* These authors contributed equally to this work.

ABSTRACT

Coronavirus Disease 2019 (COVID-19) caused by SARS-CoV-2 poses a significant threat to global public health. Early detection with reliable, fast, and simple assays is crucial to contain the spread of SARS-CoV-2. The real-time reverse transcription-polymerase chain reaction (RT-PCR) assay is currently the gold standard for SARS-CoV-2 detection; however, the reverse transcription loop-mediated isothermal amplification method (RT-LAMP) assay may allow for faster, simpler and cheaper screening of SARS-CoV-2. In this study, the triple-target RT-LAMP assay was first established to simultaneously detect three different target regions (ORF1ab, N and E genes) of SARS-CoV-2. The results revealed that the developed triplex RT-LAMP assay was able to detect down to 11 copies of SARS-CoV-2 RNA per 25 μ L reaction, with greater sensitivity than singleplex or duplex RT-LAMP assays. Moreover, two different indicators, hydroxy naphthol blue (HNB) and cresol red, were studied in the colorimetric RT-LAMP assay; our results suggest that both indicators are suitable for RT-LAMP reactions with an obvious color change. In conclusion, our developed triplex colorimetric RT-LAMP assay may be useful for the screening of COVID-19 cases in limited-resource areas.

Submitted 29 June 2022

Accepted 5 September 2022

Published 10 October 2022

Corresponding authors

Zhu Yang, zhuyang@wnmc.edu.cn

Jinhong Zhao, zhaojh@wnmc.edu.cn,

30363754@qq.com

Academic editor

Gwyn Gould

Additional Information and
Declarations can be found on
page 13

DOI 10.7717/peerj.14121

© Copyright
2022 Yang et al.

Distributed under
Creative Commons CC-BY 4.0

OPEN ACCESS

Subjects Biochemistry, Biotechnology, Molecular Biology, Virology, COVID-19

Keywords SARS-CoV-2, RT-LAMP, Triple target, Colorimetric

INTRODUCTION

SARS-CoV-2 is a highly pathogenic coronavirus causing COVID-19, which was first reported in December 2019 in Wuhan, China (*Wu et al., 2020; Zhou et al., 2020; Zhu et al., 2020*). SARS-CoV-2 has spread throughout the world and has resulted in a new global pandemic, as of May 2022, over 529 million infections and more than 6 million deaths reported (*WHO, 2021*). As cases are usually identified through large-scale local screening of individuals during regional COVID-19 outbreaks, it is important to develop more rapid and convenient assays for SARS-CoV-2 detection (*Li et al., 2021; Yoon et al., 2022*). Real-time RT-PCR with high sensitivity and specificity is the most common assay currently

used to detect SARS-CoV-2, and many approved commercial real-time RT-PCR kits are available and widely used in public health and clinical laboratories. However, real-time RT-PCR has some limitations, such as the need for expensive real-time PCR instruments and well-trained personnel, as well as a long ‘samples to results’ time (usually 4 h). These issues hamper the use of PCR-based methods (Lu et al., 2020).

As one of the novel nucleic acid (DNA or RNA) isothermal amplification methods, LAMP assays have several advantages and are suitable for point of care testing (POCT) and field applications (Notomi et al., 2015). First, LAMP can be carried out by individuals without special training or expensive equipment, which makes it applicable for SARS-CoV-2 screening in resource-limited regions. Moreover, samples without special nucleic acid isolation can be directly used as the templates in LAMP reactions, and the estimated cost for each RT-LAMP reaction is below two dollars (Rabe & Cepko, 2020; Schermer et al., 2020). Furthermore, the results of the LAMP reaction can be observed by easy-to-see color changes (Goto et al., 2009; Rabe & Cepko, 2020; Tanner, Zhang & Evans Jr, 2015). Last but not least, LAMP assays have been successfully used for detecting emerging pathogens, such as parasites (*Ortleppascaris sinensis*) (Zhao et al., 2019); bacteria (TB, and Salmonella) (WHO, 2016; Kim et al., 2022); and viruses (HIV, MERS-CoV, and SARS-CoV) (Kim et al., 2019; Lee et al., 2017; Li et al., 2019). Therefore, RT-LAMP assays are of great value for the screening of SARS-CoV-2 in places such as outpatient clinics and in the field, especially in resource-limited regions.

In the study reported here, we successfully developed a triple-target colorimetric RT-LAMP assay for rapid and convenient detection of SARS-CoV-2. First, six sets of LAMP primers were studied based on their amplification performance in real-time RT-LAMP reaction using SARS-CoV-2 genome RNA standard as the templates, different combination of LAMP primer sets were performed and triplex RT-LAMP assays targeting the ORF1ab, E and N genes of SARS-CoV-2 were first established, which may prevent failure to detect the target due to genetic mutations and improve the accuracy of detection. Second, the developed triplex RT-LAMP assay showed a higher sensitivity than the singleplex or duplex RT-LAMP assay, detecting down to 11 copies of SARS-CoV-2 RNA per reaction. Third, two different indicators, hydroxy naphthol blue (HNB) and cresol red were studied in the RT-LAMP assay; and our results suggested that both indicators were suitable for colorimetric RT-LAMP reactions. In conclusion, the developed triplex colorimetric RT-LAMP assay offers a new promising tool for rapid and convenient screening of SARS-CoV-2 in resource-limited areas around the world.

MATERIALS & METHODS

LAMP primers

In this study, the LAMP primer sets targeting the ORF1ab, N, and E genes were constructed based on RT-LAMP assays previously reported by the different laboratories, respectively (Broughton et al., 2020; Dong et al., 2021; Jamwal et al., 2021; Jiang et al., 2020; Nawattanapaiboon et al., 2021; Park et al., 2020; Yu et al., 2021; Zhang & Tanner, 2021). A set of LAMP primers consisting of six primers (F3, B3, FIP, BIP, LF, LB) targeted eight

distinct regions of the templates, and all primers were ordered from Sangon Biotech (Shanghai), LAMP primer mixtures (F3/B3 2 μ M each; FIP/BIP 16 μ M each; LF/LB 4 μ M each) were prepared and used for the further RT-LAMP reactions.

Preparation of the different dilutions of SARS-CoV-2 genome RNA standards

Certified reference material of SARS-CoV-2 genome RNA was purchased from the National Reference Material Resource Sharing Platform (<http://www.ncrm.org.cn>, GBW(E)091099) and the copies number of ORF1ab, E and N genes per reaction were calculated with the instructions. ORF1ab was the largest and the most conserved gene regions within SARS-CoV-2 genome, so we chose ORF1ab as the standard in our studies (*Hu et al., 2021*). Different gradient dilutions were prepared with EASY Dilution (9160; Takara, Dalian, China), and a panel of SARS-CoV-2 RNA standards ranging from 448 to 4 copies (ORF1ab gene) per reaction was used for further studies ([Table 1](#)).

Real-time RT-LAMP reaction

Real-time RT-LAMP assays were performed on the LightCycler 96 real-time PCR system (Roche Diagnostics, Germany) with a WarmStart[®] LAMP kit (NEB, E1700S) according to the manufacturer's protocol. The real-time RT-LAMP reaction (25 μ l) contained 5 μ l SARS-CoV-2 RNA template (448 copies), 12.5 μ l 2 \times LAMP reaction buffer, 2.5 μ l LAMP primer mix, 0.5 μ l Dye, and 4.5 μ l DEPC-H₂O. DEPC-H₂O was used as a negative control. The reaction was carried out at 65 °C for 45 min and the fluorescence signals were collected at 30 secs intervals on the SYBR Green channel, followed by melting curve analysis.

Multiplexed real-time RT-LAMP assay

Multiplex real-time RT-LAMP reactions were performed as follows. For dual-target real-time RT-LAMP reaction, the additional LAMP primer mixture replaced 2.5 μ l of DEPC-H₂O. For triple-target real-time RT-LAMP reaction, the two additional LAMP primer mixtures (2.5 μ l each) replaced 4.5 μ l of DEPC-H₂O. 5 μ l SARS-CoV-2 RNA template (448 copies) was used for each reaction. DEPC-H₂O was used as a negative control.

Colorimetric RT-LAMP reaction

To prepare further usage of the RT-LAMP assay for POCT or field applications, we developed visual detection of the RT-LAMP reaction with colorimetric methods. Hydroxy naphthol blue (H811452-5g; HNB, Macklin), which is a metal-ion sensitive indicator for monitoring the change of Mg²⁺ ion concentration in LAMP reactions, was added to the RT-LAMP reaction system (E1700S; NEB, Ipswich, MA, USA) as follows: 5 μ l SARS-CoV-2 RNA template, 12.5 μ l 2 \times LAMP reaction buffer, 2.5 μ l LAMP primer mix, 1 μ l HNB (3mM), and 4 μ l DEPC-H₂O. WarmStart Colorimetric LAMP 2 \times Master Mix (NEB, M1800L) containing cresol red, which is a pH sensitive indicator for determining the drop in pH caused by LAMP amplification, was added to the RT-LAMP reaction as follows: 5 μ l SARS-CoV-2 RNA template, 12.5 μ l 2 \times LAMP reaction buffer, 2.5 μ l LAMP primer mix and 5 μ l DEPC-H₂O. After incubation at 65 °C for 35 min, the positive reaction with HNB

Table 1 Gradient dilutions and different copies number of SARS-CoV-2 genome RNA standards per reaction.

Dilution	E0	E-1	E-2	1/2E-2	1/4E-2	E-3	E-4
ORF1ab gene (Copies/Reaction)	4480	448	44	22	11	4	<1
N gene (Copies/Reaction)	8650	865	86	43	21	8	<1
E gene (Copies/Reaction)	5300	530	53	26	13	2	<1

led to a color change from violet to blue, and the positive reaction with cresol red led to color change from pink to yellow (Goto *et al.*, 2009; Tanner, Zhang & Evans Jr, 2015).

Sensitivity of the triple target RT-LAMP assay for SARS-CoV-2

A panel of SARS-CoV-2 genome RNA standards ranging from 448 to 4 copies (Table 1) was used as the templates to determine the sensitivity of the developed triplex real-time and colorimetric RT-LAMP assay. Each template was performed in triplicate, and the template with the lowest copy number detected positively was defined as the sensitivity of the assay (Dong *et al.*, 2021).

Specificity of the triple target RT-LAMP assay for SARS-CoV-2

First, *in silico* analyses of the selected LAMP primers were performed to validate the specificity. Moreover, the specificity of the developed RT-LAMP assay was evaluated with RNA isolated from positive clinical samples with some common respiratory viruses (including human seasonal coronavirus (HCoV) types HKU1, NL63, OC43, and 229E; human seasonal influenza A virus subtypes H1N1, and H3N2, influenza B virus; human parainfluenza virus (HPIV) types 1, 2, and 3; human respiratory syncytial virus (RSV) subgroups A and B).

RESULTS

LAMP primers design and selection

Six sets of LAMP primers were designed to detect the SARS-CoV-2 ORF1ab gene (set1 and set2), N gene (set3 and set4), and E gene (set5 and set6), respectively (Fig. 1 and Table 2). After LAMP primers generated, we blasted them in the NCBI (<http://blast.ncbi.nlm.nih.gov/Blast.cgi>) database to examine and validate their specificity. The analyses showed that these primers were 100% matching with the SARS-CoV-2 genome sequences (Supplemental 1).

Using prepared SARS-CoV-2 genome RNA standard as the template (448 copies), we evaluated the amplification performance of the six sets of LAMP primers in the real-time RT-LAMP assays. All six primer sets generated amplification curves and reached the plateau phase within 40 min, with set3 showing the fastest amplification among all six designed LAMP primer sets (Fig. 2A). Furthermore, set1 (S1) was faster than set2 (S2), both targeting the ORF1ab gene; similarly, set3 (S3) was faster than set4 (S4), both targeting the N gene; and set5 (S5) was faster than set6 (S6), both targeting the E gene (Fig. 2B). Faster

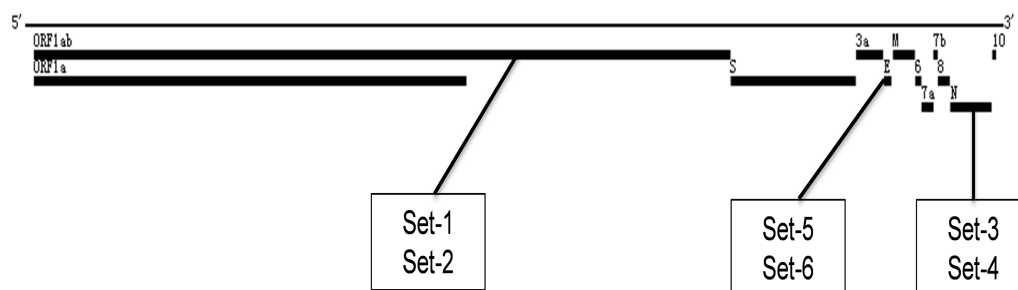


Figure 1 Locations of the different LAMP primer sets within the SARS-CoV-2 genome.

Full-size [DOI: 10.7717/peerj.14121/fig-1](https://doi.org/10.7717/peerj.14121/fig-1)

amplification is often associated with higher detection sensitivity, so these three LAMP primer sets (S1, S3 and S5) were selected for the further LAMP primer sets combination studies (Dong *et al.*, 2021).

To optimize the RT-LAMP reaction, different reaction times (ranging from 30 to 60 min) were executed in the real-time RT-LAMP assays, using 4 copies of SARS-CoV-2 genome RNA as the template, positive signal shown after 30-min reaction time, and NTC shown positively in 45-min reaction time, so 35-min was selected as the optimal reaction time in order to reduce false positives (Supplemental 2) (Zhao *et al.*, 2019).

LAMP primer sets combination and multiplex RT-LAMP reaction

Real-time RT-LAMP assays with different combination of LAMP primer sets were performed using the SARS-CoV-2 genome RNA standard (448 copies) as the template. For duplex RT-LAMP reactions that containing two different sets of LAMP primers, our results showed that the primer combination of the set3 and set1 (S3+S1) was better than the singleplex (S3) or the primer combination of the set3 and set5 (S3+S5) in peak time and signal strength (Fig. 3A). To avoid the possibility of increasing sensitivity caused by higher concentrations of the LAMP primer sets, double the amount of set3 (S3+S3) was also included and compared, the results showed that (S3+S1) was also better than (S3+S3) (Fig. 3A). For triplex RT-LAMP reactions that containing three different sets of LAMP primers, our results showed that the primer combination of the set3, set1, and set5 (S3+S1+S5) performed better than the duplex primer combination of the set3 and set1 (S3+S1) or the singleplex (S3) (Fig. 3B). All results indicated that the triplex primer combination of the set3, set1, and set5 (S3+S1+S5) exhibited the best performance and was therefore selected as the optimal LAMP primer combination for further studies (Ji *et al.*, 2021).

Visual detection of the SARS-CoV-2 RT-LAMP reaction

To develop easy-to-use colorimetric RT-LAMP assays, two different indicators, cresol red (a pH-sensitive indicator) and HNB (a metal-ion indicator), were included and assessed in the RT-LAMP reactions. All RT-LAMP reactions with an indicator were performed at 65 °C for 35 min. A positive reaction with cresol red yielded color change from pink to yellow, while a positive reaction with HNB exhibited color change from violet to blue (Figs. 4B and 5B). These results indicate that both the HNB and cresol red indicators are suitable for colorimetric detection in the RT-LAMP reactions.

Table 2 Primer sets used for RT-LAMP assays in this study.

Primer set	Primer name	Primer sequence (5'–3')	Target gene	Refs
Set1	F3	TGCAACTAATAAAGCCACG	ORF1ab	<i>Dong et al. (2021), Park et al. (2020)</i>
	B3	CGTCTTTCTGTATGGTAGGATT		
	FIP	TCTGACTTCAGTACATCAAACGAATAAATACCTGGTGTATACGTTGTC		
	BIP	GACGCGCAGGGAATGGATAATTCCACTACTTCTTCAGAGACT		
	LF	TGTTTCAACTGGTTTTGTGCTCCA		
	LB	TCTTGCCTGCCAAGATCTAAAAC		
Set2	F3	TCACCTTATGGGTTGGGA	ORF1ab	<i>Nawattanapaiboon et al. (2021)</i>
	B3	CAGTTGTGGCATCTCCTG		
	FIP	CGTTGTATGTTTGCAGCAAGATTTTGAGCCATGCCTAACATGC		
	BIP	GTGCTCAAGTATTGAGTAAAATGGTTTTTATGAGGTTCCACCTGGTT		
	LF	ACAAGTGAGGCCATAATTCTAAG		
	LB	GTGTGGCGGTTCACTATATGTT		
Set3	F3	GCCAAAAGGCTTCTACGCA	N	<i>Dong et al. (2021), Park et al. (2020)</i>
	B3	TTGCTCTCAAGCTGGTTCAA		
	FIP	TCCCCTACTGCTGCCTGGAGGCAGTCAAGCCTCTTCTCG		
	BIP	TCTCCTGCTAGAATGGCTGGCATCTGTCAAGCAGCAGCAAAG		
	LF	TGTTGCGACTACGTGATGAGGA		
	LB	ATGGCGGTGATGCTGCTCT		
Set4	F3	CCAGAATGGAGAACGCAGTG	N	<i>Dong et al. (2021), Jamwal et al. (2021), Jiang et al. (2020)</i>
	B3	CCGTCACCACCACGAATT		
	FIP	AGCGGTGAACCAAGACGCAGGGCGCGATCAAAACAACG		
	BIP	AATCCCCTCGAGGACAAGGCGAGCTCTTCGGTAGTAGCCAA		
	LF	TTATTGGGTAAACCTTGGGGC		
	LB	TTCCAATTAACACCAATAGCAGTCC		

(continued on next page)

Table 2 (continued)

Primer set	Primer name	Primer sequence (5'–3')	Target gene	Refs
Set5	F3	TGAGTACGAACTTATGTACTCAT	E	<i>Yu et al. (2021), Zhang & Tanner (2021)</i>
	B3	TTCAGATTTTAAACACGAGAGT		
	FIP	ACCACGAAAGCAAGAAAAAGAAGTTCGTTTCGGAAGAGACAG		
	BIP	TTGCTAGTTACACTAGCCATCCTTAGGTTTTACAAGACTCACGT		
	LF	CGCTATTA ACTATTAACG		
	LB	GCGCTTCGATTGTGTGCGT		
Set6	F3	CCGACGACGACTACTAGC	E	<i>Broughton et al. (2020), Dong et al. (2021)</i>
	B3	AGAGTAAACGTAAAAAGAAGGTT		
	FIP	CTAGCCATCCTTACTGCGTACTCACGTTAACAATATTGCA		
	BIP	ACCTGTCTCTCCGAAACGAATTTGTAAGCACAAGCTGATG		
	LF	TCGATTGTGTGCGTACTGC		
	LB	TGAGTACATAAGTTCGTAC		

Notes.

F3/B3: outer primers; FIP/BIP: forward and backward internal primers; LF/LB: forward and backward loop primers.

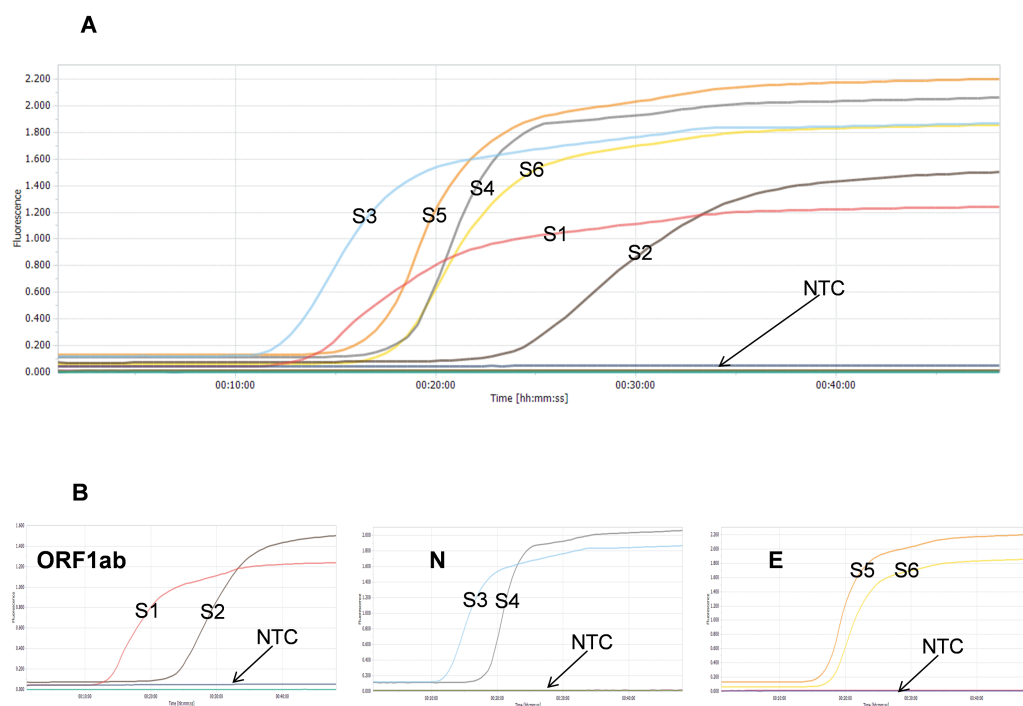


Figure 2 Comparison of the performance of SARS-CoV-2 real-time RT-LAMP assays with different LAMP primer sets. (A) Six LAMP primer sets targeting different regions of SARS-CoV-2 genome; (B) LAMP primer sets targeting the same regions (ORF1ab, N and E genes) of SARS-CoV-2 genome; NTC means DEPC-H₂O.

Full-size DOI: 10.7717/peerj.14121/fig-2

Sensitivity of the SARS-CoV-2 triple-target RT-LAMP assay

Sensitivity was determined by testing serial dilutions of SARS-CoV-2 genome RNA standards with the developed triplex real-time RT-LAMP and colorimetric RT-LAMP assays. In the triplex real-time RT-LAMP assay, all of the positive amplification curves (S-shaped) appeared within 35 min when using templates ranging from 448 to 11 copies per reaction (Fig. 4A). At the same time, positive reactions with color change also occurred with templates ranging from 448 to 11 copies per reaction in the triplex colorimetric RT-LAMP assays (Fig. 4B). All results suggested similar sensitivity of the triplex real-time RT-LAMP and colorimetric RT-LAMP assays, which were able to detect down to 11 of copies SARS-CoV-2 RNA per 25 μ l reaction, with higher sensitivity than the previously reported SARS-CoV-2 RT-LAMP assays (Dong *et al.*, 2021; Luo *et al.*, 2022).

Specificity of the SARS-CoV-2 triple-target RT-LAMP assay

First, the specificity of these six sets of LAMP primers had been well studied in the previous studies reported by the different laboratories (Broughton *et al.*, 2020; Dong *et al.*, 2021; Jamwal *et al.*, 2021; Jiang *et al.*, 2020; Nawattanapaiboon *et al.*, 2021; Park *et al.*, 2020; Yu *et al.*, 2021; Zhang & Tanner, 2021). Second, the sequence of the LAMP primers was compared to aligned sequences of some other coronaviruses (including MERS-CoV, SARS-CoV, HCoV-HKU1, HCoV-OC43, HCoV-NL63, and HCoV-229E), all of which

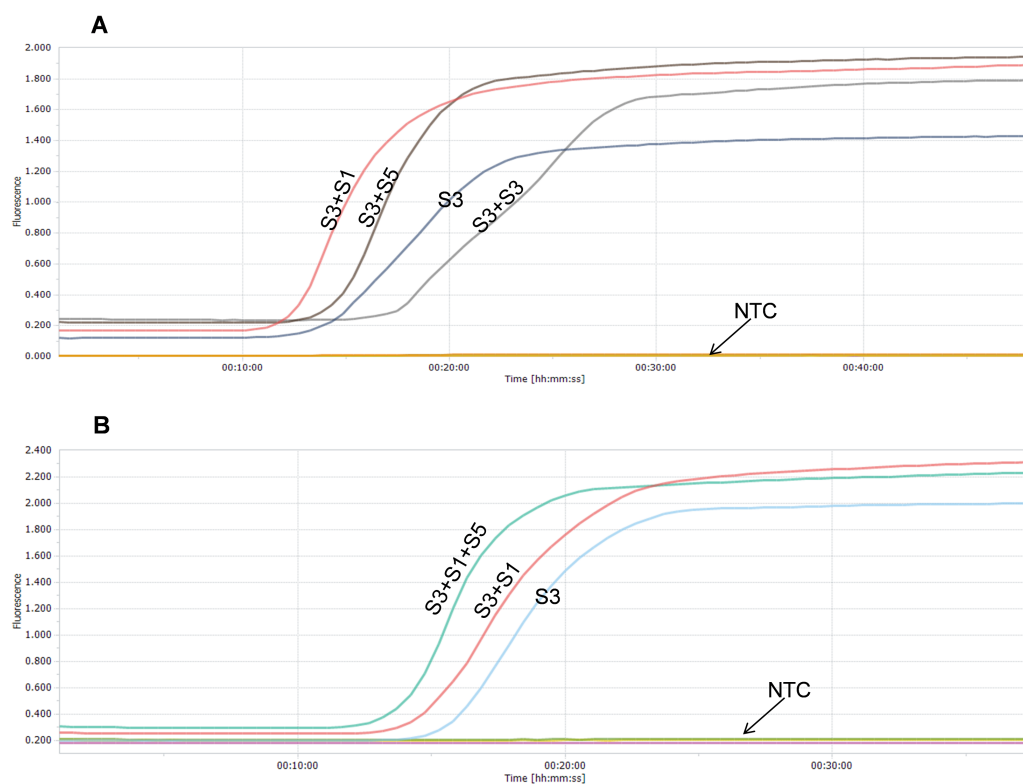


Figure 3 Comparison of the performance of SARS-CoV-2 real-time RT-LAMP assays with different combinations of LAMP primer sets. (A) Duplex combinations of LAMP primer sets; (B) Triplex combinations of LAMP primer sets; NTC means DEPC-H₂O.

Full-size  DOI: [10.7717/peerj.14121/fig-3](https://doi.org/10.7717/peerj.14121/fig-3)

had some nucleotides mismatching with our LAMP primers, supporting the specificity of the developed RT-LAMP assay. Third, the specificity was evaluated with isolated RNA of some common respiratory viruses. Our results indicated that positive results were only observed in reactions with the presence of SARS-CoV-2 RNA as the template, and no cross reactions were detected by the triplex real-time RT-LAMP assay (Fig. 5A) and the triplex colorimetric RT-LAMP assay (Fig. 5B) with RNA isolated from clinical positive samples with other common respiratory viruses. In the triplex colorimetric RT-LAMP assay containing cresol red, although the tube 11(HCoV-NL63), tube 12(HCoV-OC43), and tube 13(HCoV-229E) shown different colors from the tubes with other negative samples, the color of these three tubes are very different from positive tube (Fig. 5B). The above results indicated that the developed triplex real-time RT-LAMP and colorimetric RT-LAMP assays are highly specific for SARS-CoV-2 detection.

DISCUSSION

The global COVID-19 pandemic has lasted for more than two years and is likely to coexist with us for a long time (WHO, 2021). Currently, there are no effective therapies for COVID-19 or anti-viral drugs against SARS-CoV-2, so early detection of the virus is essential to contain the spread of SARS-CoV-2 (Li & De Clercq, 2020). Most available

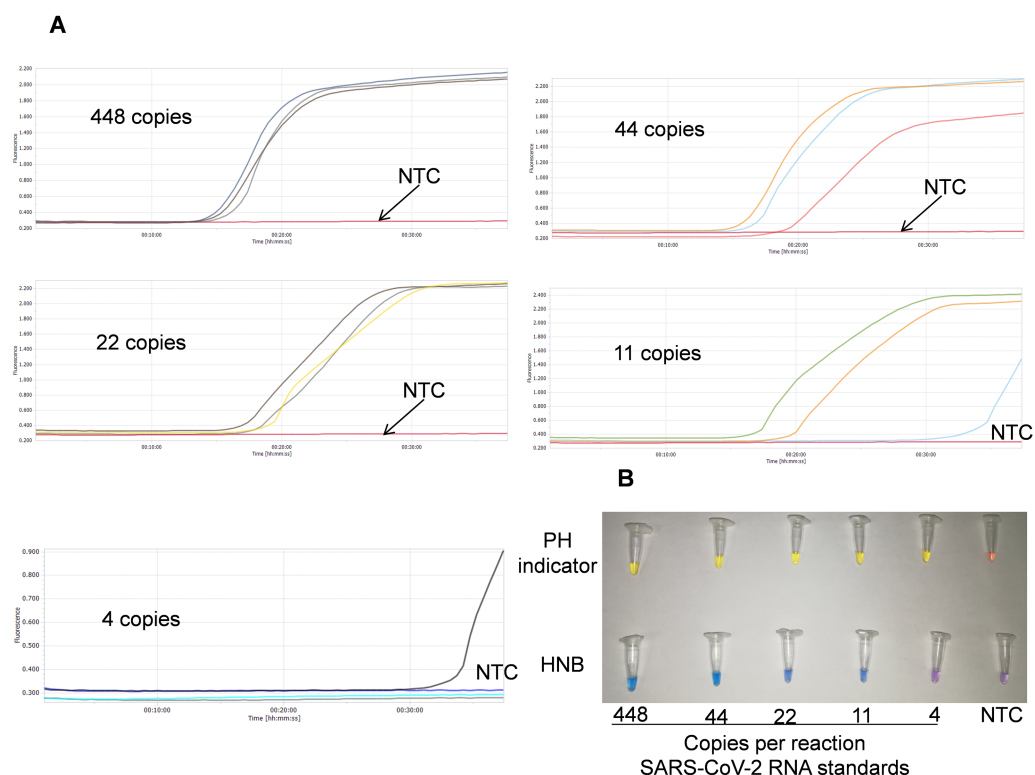


Figure 4 Sensitivity tests of SARS-CoV-2 with the developed triple-target RT-LAMP assay. (A) Results of the triplex real-time RT-LAMP assay, each dilution of samples were performed in triplicate; (B) Results of the triplex colorimetric RT-LAMP assay; NTC means DEPC-H₂O.

Full-size [DOI: 10.7717/peerj.14121/fig-4](https://doi.org/10.7717/peerj.14121/fig-4)

SARS-CoV-2 diagnostic tests or kits are based on the real-time RT-PCR platform, but these assays require a certified and highly specialized laboratory with well-trained personnel and sophisticated experimental equipment, which usually take more than 4 h to obtain results. These issues hamper the use of PCR-based methods. Developing more rapid and convenient assays for SARS-CoV-2 detection is of vital importance.

SARS-CoV-2 constantly changes through genetic mutations, with novel variants of concern (VOC) occurring over time, such as Alpha, Beta, Gamma, Delta and Omicron, which are more transmissible, more pathogenic, or have better capability for immune escape (*Hacisuleyman et al., 2021; Hoffmann et al., 2021; Wang et al., 2021*). All of these VOCs and some other genomic mutations make it difficult to detect SARS-CoV-2 with only one single target (*Ji et al., 2021; Mohon et al., 2020*). Therefore, LAMP primer sets targeting different SARS-CoV-2 regions may provide more accurate diagnosis results. Furthermore, all of these VOCs usually mutated in the Spike(S) gene, and in our studies, we chose ORF1ab, E and N genes of SARS-CoV-2, which were the most conserved regions within the SARS-CoV-2 genome. Moreover, compared to performing multiple singleplex RT-LAMP reactions, multiplex RT-LAMP assays reduce the cost and time for two or more targets being simultaneously amplified in one reaction (*Ji et al., 2021; Kim et al., 2019; Mohon et al., 2020*).

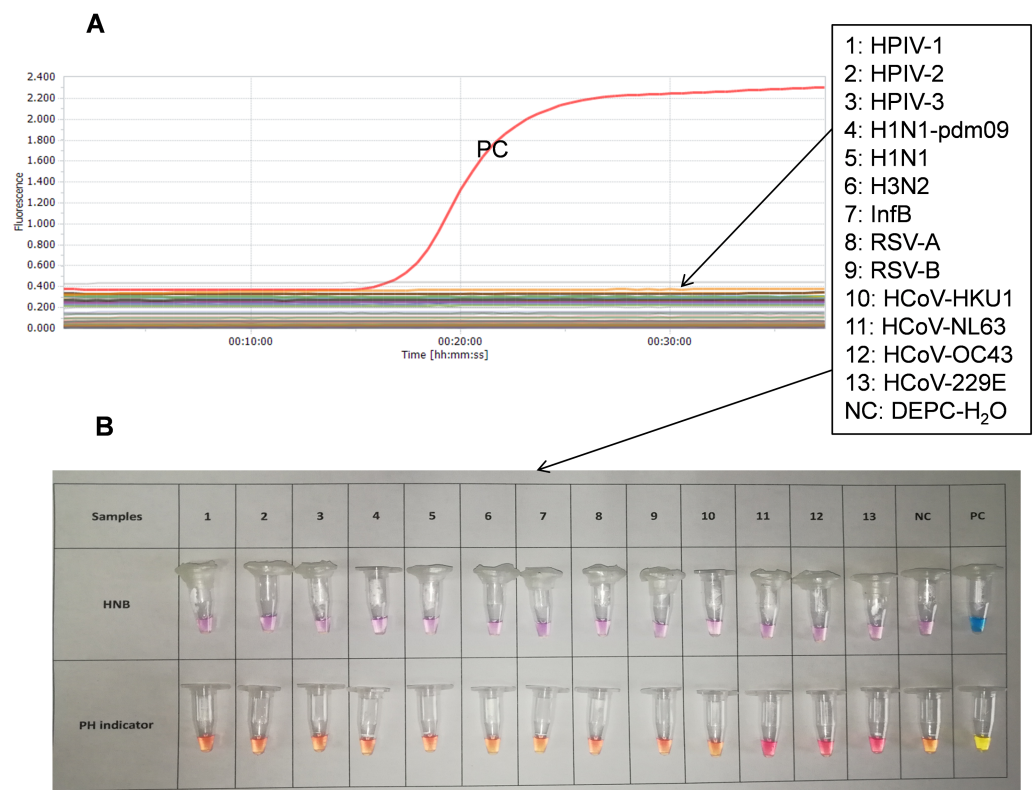


Figure 5 Specificity tests of SARS-CoV-2 with the developed triplex RT-LAMP assay. (A) Results of the triplex real-time RT-LAMP assay; (B) Results of the triplex colorimetric RT-LAMP assay; Samples and tubes: 1: hPIV-1; 2: hPIV- 2; 3: hPIV-3; 4: H1N1-pdm09; 5: H1N1; 6: H3N2; 7: infB; 8: RSV-A; 9: RSV-B; 10: hCoV-HKU1; 11: hCoV-NL63; 12: hCoV-OC43; 13: hCoV-229E; NC: DEPC-H₂O; PC: SARS-CoV-2 genome RNA standard (448 copies).

Full-size DOI: 10.7717/peerj.14121/fig-5

In our studies, we successfully developed a triple-target colorimetric RT-LAMP assay for SARS-CoV-2 detection within 45 min. It's not easy for us to develop the triplex RT-LAMP assays since more primers containing in the same reaction. However, all of the LAMP primer sets were well studied by other laboratories; also, SARS-CoV-2 with large genome size (30 kb), so it's possible for us to choose different target regions (ORF1ab, E and N genes) within SARS-CoV-2 genome.

Compared with other reported studies, our developed triple-target colorimetric RT-LAMP assay differs in several ways. First, our assays represent the first triple-target RT-LAMP assay that can detect three different genes (ORF1ab, E, and N) of SARS-CoV-2 in one reaction. Second, our assays are more sensitive than the most reported RT-LAMP assays, detecting down to 11 copies per 25 μ l reaction (Dong *et al.*, 2021; Luo *et al.*, 2022). Third, our assay can be visualized using two different indicators (HNB or cresol red), which can be easily observed by the naked eye (Dong *et al.*, 2021; Luo *et al.*, 2022; Rabe & Cepko, 2020).

In most of the reported studies, the target gene segments of SARS-CoV-2 were first constructed from either *in vitro* synthesized DNA or PCR amplified products. RNA

samples were generated by an *in vitro* transcription reaction, followed by the determination of their concentration and copies number. Finally, serial dilutions of the RNA standard samples were prepared and used as the templates for further studies. These processes are complicated, time-consuming, and costly (Dong et al., 2021; Luo et al., 2022). Furthermore, RT-LAMP assays targeted different SARS-CoV-2 gene regions, making it difficult to study the sensitivity of each assay using one synthesized RNA template (Dong et al., 2021). Moreover, different laboratories prepared different SARS-CoV-2 RNA standard samples which were used for sensitivity studies, so the sensitivity is unreliable and incomparable (Dong et al., 2021). In this study, we used a whole genome SARS-CoV-2 RNA standard and quantified the copy number of the SARS-CoV-2 RNA with digital droplet PCR, allowing us to easily compare and accurately assess the sensitivity of SARS-CoV-2 RT-LAMP assays developed by the different laboratories.

The developed real-time RT-LAMP assays and colorimetric RT-LAMP assays eliminate the possibility of cross contamination by avoiding opening the reaction tube, which is also one of the biggest concerns for LAMP applications. The results of colorimetric RT-LAMP assays can be easily observed by the naked eyes. Also, as the real-time RT-LAMP assays monitored fluorescent signals generating by SYBR Green, we could easily optimize the LAMP assays with amplification curves. Moreover, melting curve analyses always followed real-time RT-LAMP assay, which could be conveniently used for LAMP product analyses. All of the RT-LAMP assays presented in our studies were performed using either real-time RT-LAMP assays, or colorimetric RT-LAMP assays or both.

Sensitivity and specificity are two critical parameters for a diagnosis tool. The developed triplex real-time and colorimetric RT-LAMP assays, which can detect down to 11 copies of SARS-CoV-2 RNA per reaction, were more sensitive than the previously reported RT-LAMP assays (Dong et al., 2021; Luo et al., 2022). Furthermore, previous studies reporting $C_t > 35$ could be used as cut-off for SARS-CoV-2 infectivity. Therefore, the developed RT-LAMP assay would be useful for the detection of highly infectious cases of COVID-19 in the field (Kampf, Lemmen & Suchomel, 2021; Platten et al., 2021). The specificity of the developed triplex real-time and colorimetric RT-LAMP assays was evaluated with RNA isolated from positive clinical samples with other common respiratory viruses, and our results indicated that positive results were only observed in reactions with SARS-CoV-2 RNA as the template, these results indicated that the developed triplex RT-LAMP assays are highly specific for SARS-CoV-2 detection.

Our developed triplex RT-LAMP assays may have potential limitations. For example, multiplex RT-LAMP assays are not easily validated and optimized. Since 18 primers are used in the triplex RT-LAMP reaction, it is essential that the LAMP primers included in the multiplex LAMP assay do not interfere with each other. Moreover, all experiments presented here used SARS-CoV-2 genome RNA standard as the templates, and our developed real-time and colorimetric RT-LAMP assays were not validated on SARS-CoV-2 positive clinical samples. Furthermore, the RT-LAMP assay is not a quantitative test, viral loads in samples were difficult to quantify using the RT-LAMP assays (Dao Thi et al., 2020).

CONCLUSIONS

In conclusion, a rapid and convenient triple-target colorimetric RT-LAMP assay was developed for SARS-CoV-2 detection. The assay has high specificity and sensitivity and may provide a useful tool for SARS-CoV-2 screening in resource-limited regions.

ACKNOWLEDGEMENTS

We are grateful to Zhu Zhu and Isadora Zhang for critical comments and technical assistance.

ADDITIONAL INFORMATION AND DECLARATIONS

Funding

This research has been supported by grants from Wuhu Science and Technology Plan Project (No. 2020ms3-9, 2021jc2-6 and 2021yf39), Scientific Research Project of Wannan Medical College (No. wyqnyx202004, WK2021Z07 and JXYY202102), Academic Aid Program for Top-Notch Talents in Provincial Universities (No. gxbjZD2020071), Anhui University Natural Science Research Project (No. KJ2020ZD56). There was no additional external funding received for this study. The funders had no role in study design, data collection and analysis, decision to publish, or preparation of the manuscript.

Grant Disclosures

The following grant information was disclosed by the authors:

Wuhu Science and Technology Plan Project: 2020ms3-9, 2021jc2-6, 2021yf39.

Scientific Research Project of Wannan Medical College: wyqnyx202004, WK2021Z07, JXYY202102.

Academic Aid Program for Top-Notch Talents in Provincial Universities: gxbjZD2020071.

Anhui University Natural Science Research Project: KJ2020ZD56.

Competing Interests

The authors declare there are no competing interests.

Author Contributions

- Zhu Yang conceived and designed the experiments, analyzed the data, prepared figures and/or tables, authored or reviewed drafts of the article, and approved the final draft.
- Nicole Y. Liu performed the experiments, analyzed the data, authored or reviewed drafts of the article, and approved the final draft.
- Zhiwei Zhu performed the experiments, analyzed the data, prepared figures and/or tables, and approved the final draft.
- Minmin Xiao analyzed the data, authored or reviewed drafts of the article, and approved the final draft.
- Shuzhi Zhong analyzed the data, authored or reviewed drafts of the article, and approved the final draft.

- Qiqi Xue performed the experiments, prepared figures and/or tables, and approved the final draft.
- Lina Nie performed the experiments, prepared figures and/or tables, and approved the final draft.
- Jinhong Zhao conceived and designed the experiments, analyzed the data, prepared figures and/or tables, authored or reviewed drafts of the article, and approved the final draft.

Data Availability

The following information was supplied regarding data availability:

The raw data is available in the [Supplementary Files](#).

Supplemental Information

Supplemental information for this article can be found online at <http://dx.doi.org/10.7717/peerj.14121#supplemental-information>.

REFERENCES

- Broughton JP, Deng X, Yu G, Fasching CL, Servellita V, Singh J, Miao X, Stethorst JA, Granados A, Sotomayor-Gonzalez A, Zorn K, Gopez A, Hsu E, Gu W, Miller S, Pan CY, Guevara H, Wadford DA, Chen JS, Chiu CY. 2020. CRISPR-Cas12-based detection of SARS-CoV-2. *Nature Biotechnology* 38:870–874 DOI 10.1038/s41587-020-0513-4.
- Dao Thi VL, Herbst K, Boerner K, Meurer M, Kremer LP, Kirrmaier D, Freistaedter A, Papagiannidis D, Galmozzi C, Stanifer ML, Boulant S, Klein S, Chlanda P, Khalid D, Miranda IBarreto, Schnitzler P, Kräusslich HG, Knop M, Anders S. 2020. A colorimetric RT-LAMP assay and LAMP-sequencing for detecting SARS-CoV-2 RNA in clinical samples. *Science Translational Medicine* 12(556):eabc7075 DOI 10.1126/scitranslmed.abc7075.
- Dong Y, Wu X, Li S, Lu R, Li Y, Wan Z, Qin J, Yu G, Jin X, Zhang C. 2021. Comparative evaluation of 19 reverse transcription loop-mediated isothermal amplification assays for detection of SARS-CoV-2. *Scientific Reports* 11:2936 DOI 10.1038/s41598-020-80314-0.
- Goto M, Honda E, Ogura A, Nomoto A, Hanaki KI. 2009. Colorimetric detection of loop-mediated isothermal amplification reaction by using hydroxy naphthol blue. *Biotechniques* 46:167–172 DOI 10.2144/000113072.
- Hacisuleyman E, Hale C, Saito Y, Blachere NE, Bergh M, Conlon EG, Schaefer-Babajew DJ, DaSilva J, Muecksch F, Gaebler C, Lifton R, Nussenzweig MC, Hatzioannou T, Bieniasz PD, Darnell RB. 2021. Vaccine breakthrough infections with SARS-CoV-2 variants. *The New England Journal of Medicine* 384:2212–2218 DOI 10.1056/NEJMoa2105000.
- Hoffmann M, Arora P, Groß R, Seidel A, Hörnich BF, Hahn AS, Krüger N, Graichen L, Hofmann-Winkler H, Kempf A, Winkler MS, Schulz S, Jäck HM, Jahrsdörfer B, Schrezenmeier H, Müller M, Kleger A, Münch J, Pöhlmann S. 2021.

- SARS-CoV-2 variants B.1.351 and P.1 escape from neutralizing antibodies. *Cell* **184**:2384–2393 e2312 DOI [10.1016/j.cell.2021.03.036](https://doi.org/10.1016/j.cell.2021.03.036).
- Hu B, Guo H, Zhou P, Shi Z-L. 2021.** Characteristics of SARS-CoV-2 and COVID-19. *Nature Reviews Microbiology* **19**:141–154 DOI [10.1038/s41579-020-00459-7](https://doi.org/10.1038/s41579-020-00459-7).
- Jamwal VL, Kumar N, Bhat R, Jamwal PS, Singh K, Dogra S, Kulkarni A, Bhadra B, Shukla MR, Saran S, Dasgupta S, Vishwakarma RA, Gandhi SG. 2021.** Optimization and validation of RT-LAMP assay for diagnosis of SARS-CoV2 including the globally dominant Delta variant. *Virology Journal* **18**:178–178 DOI [10.1186/s12985-021-01642-9](https://doi.org/10.1186/s12985-021-01642-9).
- Ji C, Xue S, Yu M, Liu J, Zhang Q, Zuo F, Zheng Q, Zhao L, Zhang H, Cao J, Wang K, Liu W, Zheng W. 2021.** Rapid detection of SARS-CoV-2 virus using dual reverse transcriptional colorimetric loop-mediated isothermal amplification. *ACS Omega* **6**:8837–8849 DOI [10.1021/acsomega.0c05781](https://doi.org/10.1021/acsomega.0c05781).
- Jiang M, Pan W, Arasthfer A, Fang W, Ling L, Fang H, Daneshnia F, Yu J, Liao W, Pei H, Li X, Lass-Flörl C. 2020.** Development and validation of a rapid, single-step reverse transcriptase loop-mediated isothermal amplification (RT-LAMP) system potentially to be used for reliable and high-throughput screening of COVID-19. *Frontiers in Cellular and Infection Microbiology* **10**:331–331 DOI [10.3389/fcimb.2020.00331](https://doi.org/10.3389/fcimb.2020.00331).
- Kampf G, Lemmen S, Suchomel M. 2021.** Ct values and infectivity of SARS-CoV-2 on surfaces. *The Lancet Infectious Diseases* **21**:e141 DOI [10.1016/s1473-3099\(20\)30883-5](https://doi.org/10.1016/s1473-3099(20)30883-5).
- Kim JH, Kang M, Park E, Chung DR, Kim J, Hwang ES. 2019.** A simple and multiplex loop-mediated isothermal amplification (LAMP) assay for rapid detection of SARS-CoV. *BioChip Journal* **13**:341–351 DOI [10.1007/s13206-019-3404-3](https://doi.org/10.1007/s13206-019-3404-3).
- Kim S, Kim JH, Kim S, Park JS, Cha BS, Lee ES, Han J, Shin J, Jang Y, Park KS. 2022.** Loop-mediated isothermal amplification-based nucleic acid lateral flow assay for the specific and multiplex detection of genetic markers. *Analytica Chimica Acta* **1205**:339781 DOI [10.1016/j.aca.2022.339781](https://doi.org/10.1016/j.aca.2022.339781).
- Lee SH, Baek YH, Kim Y-H, Choi Y-K, Song M-S, Ahn J-Y. 2017.** One-pot reverse transcriptional loop-mediated isothermal amplification (RT-LAMP) for detecting MERS-CoV. *Frontiers in Microbiology* **7**:2166–2166 DOI [10.3389/fmicb.2016.02166](https://doi.org/10.3389/fmicb.2016.02166).
- Li G, De Clercq E. 2020.** Therapeutic options for the 2019 novel coronavirus (2019-nCoV). *Nature Reviews Drug Discovery* **19**:149–150 DOI [10.1038/d41573-020-00016-0](https://doi.org/10.1038/d41573-020-00016-0).
- Li Y, Zhou Y, Ma Y, Xu R, Jin X, Zhang C. 2019.** A Mismatch-tolerant RT-LAMP method for molecular diagnosis of highly variable viruses. *Bio-protocol* **9**:e3415–e3415 DOI [10.21769/BioProtoc.3415](https://doi.org/10.21769/BioProtoc.3415).
- Li Z, Liu F, Cui J, Peng Z, Chang Z, Lai S, Chen Q, Wang L, Gao GF, Feng Z. 2021.** Comprehensive large-scale nucleic acid-testing strategies support China's sustained containment of COVID-19. *Nature Medicine* **27**:740–742 DOI [10.1038/s41591-021-01308-7](https://doi.org/10.1038/s41591-021-01308-7).

- Lu R, Wu X, Wan Z, Li Y, Zuo L, Qin J, Jin X, Zhang C. 2020. Development of a novel reverse transcription loop-mediated isothermal amplification method for rapid detection of SARS-CoV-2. *Virologica Sinica* 35:344–347 DOI 10.1007/s12250-020-00218-1.
- Luo Z, Ye C, Xiao H, Yin J, Liang Y, Ruan Z, Luo D, Gao D, Tan Q, Li Y, Zhang Q, Liu W, Wu J. 2022. Optimization of loop-mediated isothermal amplification (LAMP) assay for robust visualization in SARS-CoV-2 and emerging variants diagnosis. *Chemical Engineering Science* 251:117430 DOI 10.1016/j.ces.2022.117430.
- Mohon AN, Oberding L, Hundt J, van Marle G, Pabbaraju K, Berenger BM, Lisboa L, Griener T, Czub M, Doolan C, Servellita V, Chiu CY, Greninger AL, Jerome KR, Pillai DR. 2020. Optimization and clinical validation of dual-target RT-LAMP for SARS-CoV-2. *Journal of Virological Methods* 286:113972 DOI 10.1016/j.jviromet.2020.113972.
- Nawattanapaiboon K, Pasomsub E, Prombun P, Wongbunmak A, Jenjitwanich A, Mahasupachai P, Vetcho P, Chayrach C, Manatjaroenlap N, Samphaongern C, Watthanachockchai T, Leedorkmai P, Manopwisedjaroen S, Akkarawongsapat R, Thitithanyanont A, Phanchana M, Panbangred W, Chauvatcharin S, Sriksirin T. 2021. Colorimetric reverse transcription loop-mediated isothermal amplification (RT-LAMP) as a visual diagnostic platform for the detection of the emerging coronavirus SARS-CoV-2. *Analyst* 146:471–477 DOI 10.1039/D0AN01775B.
- Notomi T, Mori Y, Tomita N, Kanda H. 2015. Loop-mediated isothermal amplification (LAMP): principle, features, and future prospects. *Journal of Microbiology* 53:1–5 DOI 10.1007/s12275-015-4656-9.
- Park GS, Ku K, Baek SH, Kim SJ, Kim SI, Kim BT, Maeng JS. 2020. Development of reverse transcription loop-mediated isothermal amplification assays targeting severe acute respiratory syndrome coronavirus 2 (SARS-CoV-2). *The Journal of Molecular Diagnostics* 22:729–735 DOI 10.1016/j.jmoldx.2020.03.006.
- Platten M, Hoffmann D, Grosser R, Wisplinghoff F, Wisplinghoff H, Wiesmüller G, Schildgen O, Schildgen V. 2021. SARS-CoV-2, CT-values, and infectivity-conclusions to be drawn from side observations. *Viruses* 13:1459 DOI 10.3390/v13081459.
- Rabe BA, Cepko C. 2020. SARS-CoV-2 detection using isothermal amplification and a rapid, inexpensive protocol for sample inactivation and purification. *Proceedings of the National Academy of Sciences of the United States of America* 117:24450–24458 DOI 10.1073/pnas.2011221117.
- Schermer B, Fabretti F, Damagnez M, Di Cristanziano V, Heger E, Arjune S, Tanner NA, Imhof T, Koch M, Ladha A, Joung J, Gootenberg JS, Abudayyeh OO, Burst V, Zhang F, Klein F, Benzing T, Müller RU. 2020. Rapid SARS-CoV-2 testing in primary material based on a novel multiplex RT-LAMP assay. *PLOS ONE* 15:e0238612 DOI 10.1371/journal.pone.0238612.
- Tanner NA, Zhang Y, Evans Jr TC. 2015. Visual detection of isothermal nucleic acid amplification using pH-sensitive dyes. *Biotechniques* 58:59–68 DOI 10.2144/000114253.

- Wang Y, Chen R, Hu F, Lan Y, Yang Z, Zhan C, Shi J, Deng X, Jiang M, Zhong S, Liao B, Deng K, Tang J, Guo L, Jiang M, Fan Q, Li M, Liu J, Shi Y, Deng X, Xiao X, Kang M, Li Y, Guan W, Li Y, Li S, Li F, Zhong N, Tang X. 2021. Transmission, viral kinetics and clinical characteristics of the emergent SARS-CoV-2 Delta VOC in Guangzhou, China. *EClinicalMedicine* 40:101129 DOI 10.1016/j.eclinm.2021.101129.
- World Health Organization (WHO). 2016. *The use of loop-mediated isothermal amplification (TB-LAMP) for the diagnosis of pulmonary tuberculosis: policy guidance*. Geneva: World Health Organization 2016.
- WHO. 2021. Coronavirus disease (COVID-19) Weekly Epidemiological Update and Weekly Operational Update. Available at <https://www.who.int/emergencies/diseases/novel-coronavirus-2019/situation-reports>.
- Wu F, Zhao S, Yu B, Chen Y-M, Wang W, Song Z-G, Hu Y, Tao Z-W, Tian J-H, Pei Y-Y, Yuan M-L, Zhang Y-L, Dai F-H, Liu Y, Wang Q-M, Zheng J-J, Xu L, Holmes EC, Zhang Y-Z. 2020. A new coronavirus associated with human respiratory disease in China. *Nature* DOI 10.1038/s41586-020-2008-3.
- Yoon T, Shin J, Choi HJ, Park KS. 2022. Split T7 promoter-based isothermal transcription amplification for one-step fluorescence detection of SARS-CoV-2 and emerging variants. *Biosensors and Bioelectronics* 208:114221 DOI 10.1016/j.bios.2022.114221.
- Yu AD, Galatsis K, Zheng J, Le JQ, Ma D, Perlman S, Rosbash M. 2021. Development of a saliva-optimized RT-LAMP assay for SARS-CoV-2. *Journal of Biomolecular Techniques: JBT* 32:102–113 DOI 10.7171/jbt.21-3203-005.
- Zhang Y, Tanner NA. 2021. Development of multiplexed reverse-transcription loop-mediated isothermal amplification for detection of SARS-CoV-2 and influenza viral RNA. *Biotechniques* 70:167–174 DOI 10.2144/btn-2020-0157.
- Zhao J, Xu W, Tu G, Zhou Y, Wu X. 2019. Sensitive and rapid detection of *Ortleppascaris sinensis* (Nematoda: Ascaridoidea) by loop-mediated isothermal amplification. *PeerJ* 7:e7607 DOI 10.7717/peerj.7607.
- Zhou P, Yang X-L, Wang X-G, Hu B, Zhang L, Zhang W, Si H-R, Zhu Y, Li B, Huang C-L, Chen H-D, Chen J, Luo Y, Guo H, Jiang R-D, Liu M-Q, Chen Y, Shen X-R, Wang X, Zheng X-S, Zhao K, Chen Q-J, Deng F, Liu L-L, Yan B, Zhan F-X, Wang Y-Y, Xiao G-F, Shi Z-L. 2020. A pneumonia outbreak associated with a new coronavirus of probable bat origin. *Nature* 579:270–273 DOI 10.1038/s41586-020-2012-7.
- Zhu N, Zhang D, Wang W, Li X, Yang B, Song J, Zhao X, Huang B, Shi W, Lu R, Niu P, Zhan F, Ma X, Wang D, Xu W, Wu G, Gao GF, Tan W. 2020. A novel coronavirus from patients with pneumonia in China, 2019. *New England Journal of Medicine* DOI 10.1056/NEJMoa2001017.