

CORRECTION

Correction: Phylogenetic Relationships of American Willows (*Salix* L., Salicaceae)

Aurélien Lauron-Moreau, Frédéric E. Pitre, George W. Argus, Michel Labrecque, Luc Brouillet

Previous revision versions of [Fig 2](#), [Fig 3](#), and [S1 Fig](#) were incorrectly published. Please view the correct [Fig 2](#), [Fig 3](#), and [S1 Fig](#) here.



OPEN ACCESS

Citation: Lauron-Moreau A, Pitre FE, Argus GW, Labrecque M, Brouillet L (2015) Correction: Phylogenetic Relationships of American Willows (*Salix* L., Salicaceae). PLoS ONE 10(9): e0138963. doi:10.1371/journal.pone.0138963

Published: September 18, 2015

Copyright: © 2015 Lauron-Moreau et al. This is an open access article distributed under the terms of the [Creative Commons Attribution License](#), which permits unrestricted use, distribution, and reproduction in any medium, provided the original author and source are credited.

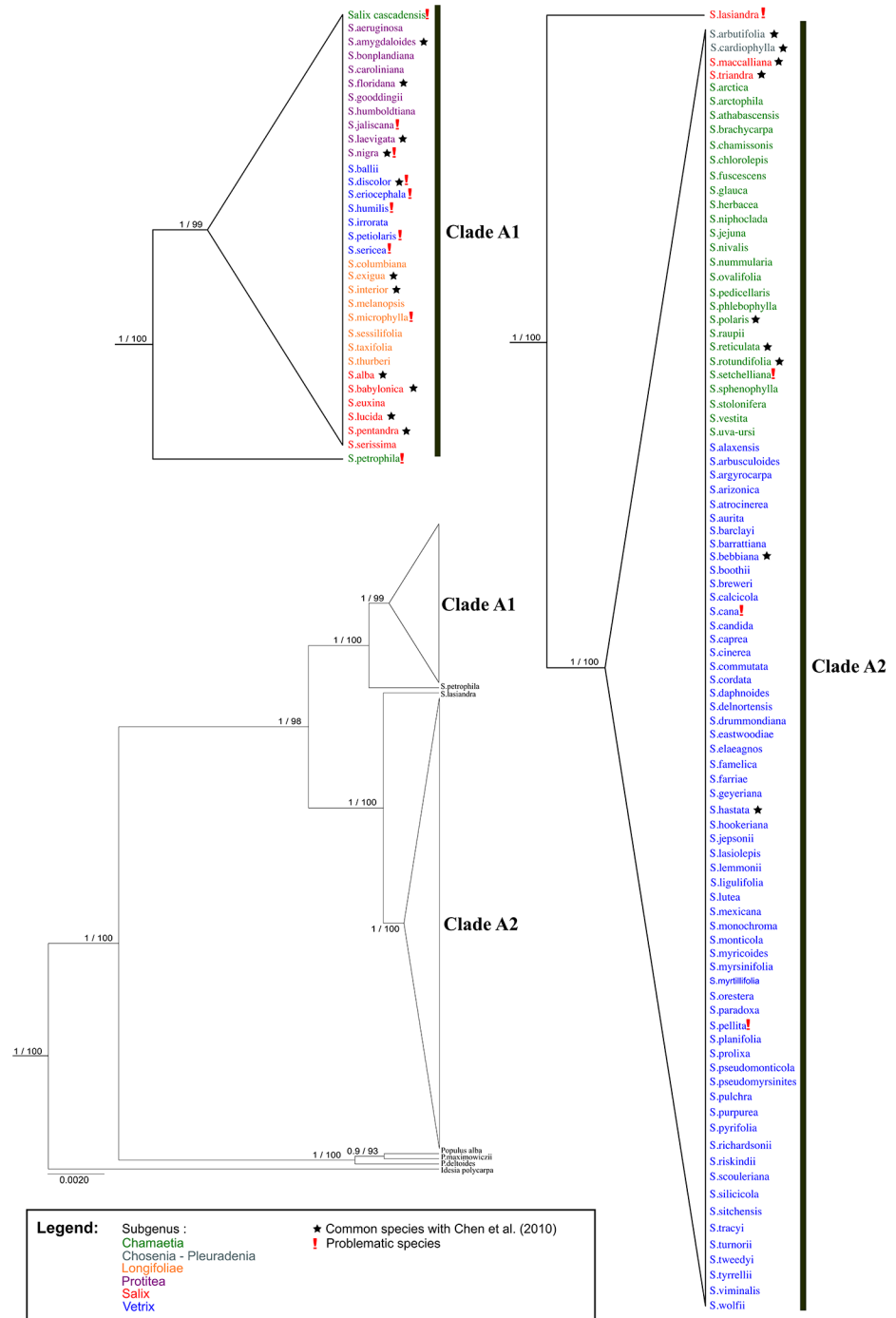


Fig 2. BEAST gene tree of *matK* and *rbcL*. Branch support is Bayesian posterior probabilities and ML bootstrap values; subgenera are identified using colors; *Idesia* and *Populus* are outgroups.

doi:10.1371/journal.pone.0138963.g001

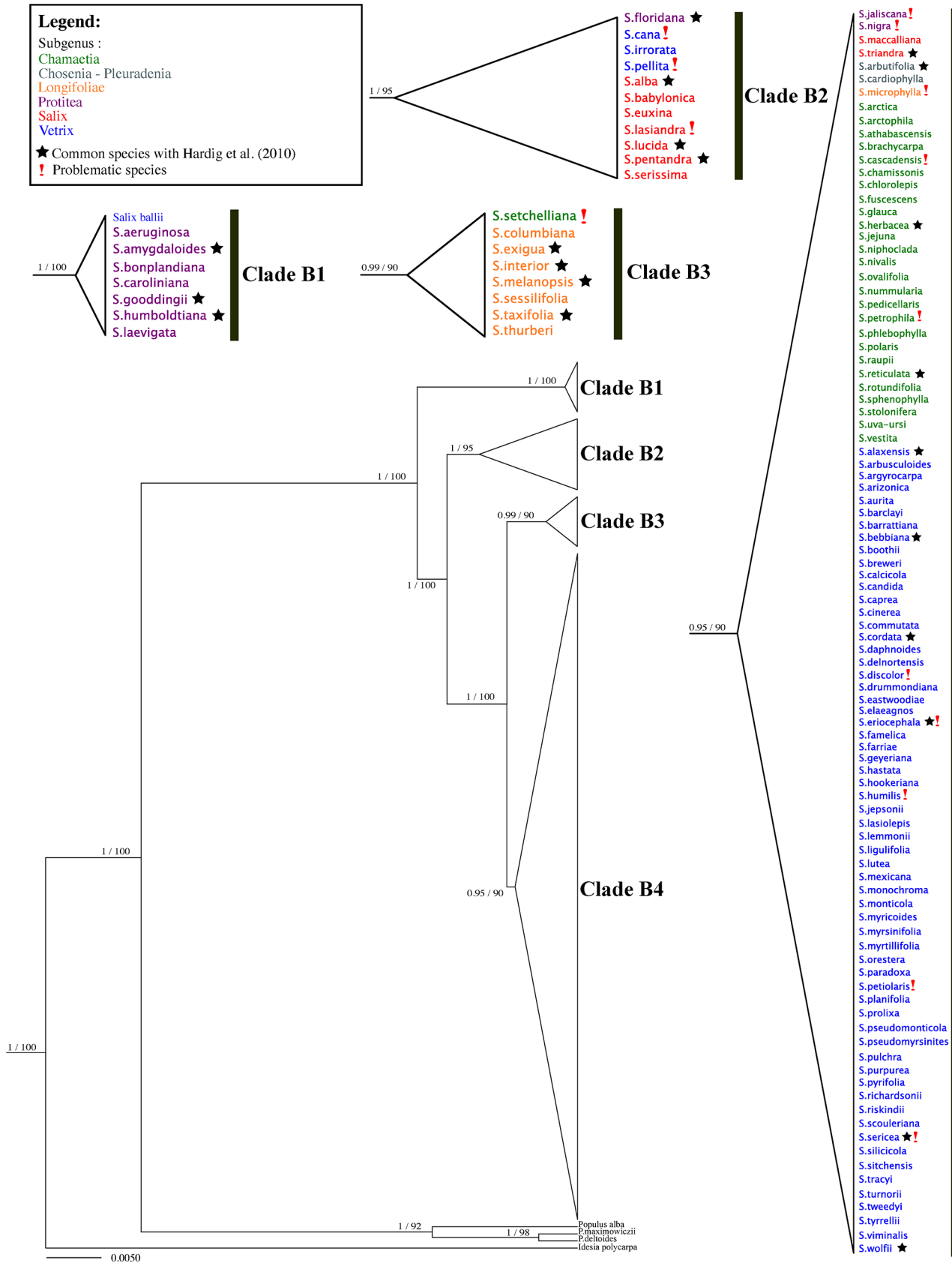


Fig 3. BEAST gene tree of ITS. Branch support is Bayesian posterior probabilities and ML bootstrap values; subgenera are identified using colors; *Idesia* and *Populus* are outgroups.

doi:10.1371/journal.pone.0138963.g002

Supporting Information

S1 Fig. BEAST species tree generated with ITS, matK and rbcL, constrained to fit the subgenera of Argus (2010). Branch support is Bayesian posterior probabilities and ML bootstrap values.

(EPS)

Reference

1. Lauron-Moreau A, Pitre FE, Argus GW, Labrecque M, Brouillet L (2015) Phylogenetic Relationships of American Willows (*Salix* L., Salicaceae). PLoS ONE 10(4): e0121965. doi:[10.1371/journal.pone.0121965](https://doi.org/10.1371/journal.pone.0121965) PMID: [25880993](https://pubmed.ncbi.nlm.nih.gov/25880993/)