

ANGPTL8 Gene Polymorphism rs2278426 Is Related to Carotid Intima–Media Thickness in T2DM

This article was published in the following Dove Press journal:
Diabetes, Metabolic Syndrome and Obesity: Targets and Therapy

Chang Guo 
Li Zhao
Yi Ding
Zhichong Zhao
Chenxi Wang
Lian Li
Zhensheng Cai
Yanyan Li
Hong Xia
ZhuanZhuan Zhu
Fan Yu
Meiqing Dai
Xia Deng
Guoyue Yuan

Department of Endocrinology, Affiliated Hospital of Jiangsu University, Zhenjiang, Jiangsu 212001, People's Republic of China

Correspondence: Guoyue Yuan
Department of Endocrinology, Affiliated Hospital of Jiangsu University, Zhenjiang, Jiangsu 212001, People's Republic of China
Tel +86-135-0528-9352
Email yuanguoyue@ujs.edu.cn

Xia Deng
Department of Endocrinology, Affiliated Hospital of Jiangsu University, Zhenjiang, Jiangsu, 212001, People's Republic of China
Email dengxia11@outlook.com

Aim: ANGPTL8 is a cytokine expressed and secreted by liver and adipose tissue, and is involved in glucose, lipid, and energy metabolism. Although studies have shown that ANGPTL8 is elevated in type 2 diabetes mellitus (T2DM) and cardiovascular disease, few have examined the association between *ANGPTL8* single-nucleotide polymorphisms and the risk of macrovascular complications in T2DM patients. This study aimed to explore the relationship between rs2278426 and carotid intima–media thickening (cIMT) in T2DM.

Methods: A total of 217 T2DM patients and 201 healthy control subjects with normal glucose tolerance were recruited in the study. T2DM patients were divided into two groups: T2DM patients without cIM thickening (cIMT <1 mm, 109 cases) and T2DM patients with cIM thickening (cIMT ≥1 mm, 108 cases). rs2278426 genotypes in all 418 subjects were determined and the risk of T2DM and T2DM with cIM thickening analyzed.

Results: CT+TT-genotype frequency in T2DM was higher than in controls with normal glucose tolerance, and the proportion of the CT+TT genotype in the group with cIMT was higher than in the group ($P<0.05$). In addition, T alleles were associated with waist:hip ratio, triglycerides, high density–lipoprotein cholesterol, plasma glucose at 2 hours' oral glucose tolerance, and homeostatic model assessment of insulin resistance ($P<0.05$).

Conclusion: Generally, carriers of the T allele at rs2278426 are more likely to develop T2DM, and the risk of cIM thickening is significantly increased for T-allele carriers with T2DM, which indicates an increased risk of macroangiopathy.

Keywords: type 2 diabetes mellitus, angiotensin-like protein 8, carotid intima–media thickness, polymorphism, rs2278426

Introduction

Type 2 diabetes mellitus (T2DM) is a chronic metabolic disease, and its incidence is increasing worldwide.¹ According to data from the International Diabetes Federation, global DM prevalence increased from 108 million in 1980 to 463 million in 2019. It is estimated that global prevalence will reach 700 million by 2045.^{2,3} With development in the course of DM, the risk of microvascular and macrovascular complications increases. Among these are microvascular complications, mainly including diabetic nephropathy, retinopathy, and neuropathy, and macrovascular complications, mainly including coronary artery disease, peripheral vascular disease, and carotid artery disease.⁴ Due to the lack of early symptoms or signs of T2DM, some T2DM patients have DM complications before clinical diagnosis, which seriously threatens disease control and their quality of life.² As a representative of macrovascular diseases, cardiovascular disease (CVD) is the

main cause of death of T2DM patients.⁵ Therefore, early prevention and diagnosis of DM and its macrovascular complications are particularly important.

The pathological basis of diabetic macroangiopathy is atherosclerosis, which is often evaluated by carotid intima-media thickening (cIMT) from the inner surface to the outer surface of the carotid artery.^{6,7} Because the process of atherosclerosis can directly affect blood-vessel walls and compensatory dilation often occurs before stenosis, it is difficult to predict the degree of atherosclerosis in the early stages by the degree of stenosis of the lumen secondary to the formation of plaques. Pignoli et al found that cIMT measured by B-ultrasound is highly reliable and repeatable and can be used for the evaluation and diagnosis of atherosclerosis.^{6,8–10} Since atherosclerosis is closely related to cardiovascular and other major vascular diseases, cIMT has also been widely used in observational epidemiological studies and clinical trials as an alternative marker of CVD.^{11–17}

T2DM macroangiopathy is affected by many factors. Research data show that >75% of T2DM patients have DM-related lipid-metabolism abnormalities, due to hyperinsulinemia, insulin (Ins) resistance, and apoptosis of islet β cells, which are mainly mixed-lipid abnormalities, which increase the incidence of macrovascular diseases.^{5,18–22} In recent decades, genetic factors have also been widely studied. More and more susceptibility genes have been found, and single-nucleotide polymorphisms (SNPs) of these susceptible genes have also been proved to be related to the occurrence and development of macroangiopathy.^{23–26} Therefore, SNP-related research has important clinical value in the prevention, diagnosis, treatment, and prognosis of T2DM and macroangiopathy.

ANGPTL8 (also known as RIFL, lipasin and betatrophin) is a cytokine secreted mainly by the liver and adipose cells. Its expression and secretion are affected by the nutritional or metabolic state of the body, and it can regulate the metabolism of glucose and lipid to different degrees.^{27–32} In previous studies, our research team found that the serum concentration of ANGPTL8 is significantly increased in newly diagnosed T2DM patients.³³ In follow-up clinical studies, other researchers obtained the same results with us,³⁴ and serum ANGPTL8 concentration has been found to be independently related to fasting blood glucose and T2DM.³⁵ In addition, ANGPTL8 is also associated with pre-DM, retinopathy, and renal function in T2DM patients.^{36–38} On the other hand, ANGPTL8 and its protein-family members can participate in the

regulation of lipid metabolism by inhibiting the activity of lipoprotein lipase (LPL) and increasing the level of circulating triglycerides (TGs).^{31,39} Clinical studies have shown that the level of circulating ANGPTL8 in obese and overweight patients is significantly increased.⁴⁰ Therefore, ANGPTL8 may be involved in the occurrence and development of T2DM and its macrovascular lesions through its important regulatory role in glucose and lipid metabolism.

The rs2278426 polymorphism of the *ANGPTL8* gene is an SNP locus discovered in recent years. The wild-type gene of this locus is C and the mutant gene T. The frequency of the T allele is about 5% in Caucasians, 25% in Mexican Americans, and 50% in Native Americans. In a Japanese study, T-allele carriers were more likely to have T2DM and impaired glucose tolerance.²⁶ Other researchers have also found that the T allele is related to low density-lipoprotein cholesterol (LDL-C) and high-density-lipoprotein cholesterol (HDL-C), and individuals carrying the T allele may have lower total cholesterol (TC) and HDL-C levels.²⁵ However, the relationship between polymorphism of this locus and cIMT in T2DM has not been reported. In this study, we explored the relationship between the rs2278426 polymorphism of *ANGPTL8* and cIMT in T2DM, which may provide a new way for the early prediction, prevention, and diagnosis of T2DM macroangiopathy.

Methods

Subjects for Genotyping

We genotyped the ANGPTL8 rs2278426 SNP in 217 T2DM patients and 201 healthy control subjects with normal glucose tolerance (NGT) from Jiangsu Province, China. T2DM patients were divided into two groups: those without cIMT (cIMT < 1 mm, 109 cases) and those with cIMT (cIMT \geq 1 mm, 108 cases). We used the WHO DM diagnosis and classification standard of 1999, ie, the blood glucose \geq 11.1 mmol/L, fasting blood glucose \geq 7.0 mmol/L, or plasma glucose at 2 hours (2hPG) \geq 11.1 mmol/L on the oral glucose-tolerance test.

Using a commercial kit (DP348-03; Tiangen Biotech, Beijing, China), genomic DNA was isolated from whole blood cells treated with EDTA according to product specifications. We mixed 500 μ L blood with 1 mL cell lysate, centrifuged at 10,000 rpm for 1 minute, discarded the supernatant, retained the nucleus precipitation, and mixed with 200 μ L buffer. Then, we added 220 μ L prepared protease K solution, mixed this well, and kept it at 56°C for 10 minutes. After 5 minutes at room temperature, proper amount of buffer solution was added and the mixture transferred to

the adsorption column, then centrifuged at 12,000 rpm for 30 seconds. Tissue solution was added, the whole centrifuged at 12,000 rpm for 30 seconds, and the adsorption column washed and dried for 2 minutes. DNA on the column was eluted by centrifugation at 12,000 rpm for 2 minutes, and genomic DNA was obtained. Consent was obtained from all T2DM patients and control subjects, and the experimental design was approved by the ethics committee of Affiliated Hospital of Jiangsu University.

Genotyping of Polymorphisms

Using the genomic DNA of subjects as the template, DNA fragments containing *ANGPTL8* rs2278426 was amplified by PCR (forward primer 5'-CAGGAGTTCTATTGTGCGGC-3', reverse primer 5'-CCTGATGCAACTATCGCACC-3'). PCR products were digested by restriction enzymes and products analyzed by 3% agarose-gel electrophoresis (80V, 45 minutes). PCR products containing the T allele can be divided into two fragments of 331bp and 56bp by restriction endonuclease (BseGI). Because of the smallness of the 56 bp fragment, the migration of electrophoresis is too fast, and it cannot be observed. Therefore, the electrophoretic results of restriction-enzyme products were CC (one band at 387 bp), CT (two bands at 387 bp and 331 bp), and TT (one band at 331 bp; Figure 1A). PCR reaction and restriction enzyme digestion–reaction kits were purchased from Thermo Fisher Scientific.

In addition, we randomly selected PCR products representing different genotypes for two-way sequencing analysis to verify the genotyping results of restriction enzyme–

digestion reaction. The results showed that the similarity between the PCR products of *ANGPTL8* rs2278426 and the original gene provided by the NCBI website was 99%, and the cleavage site was the same as the mutation site. The results of DNA sequencing were consistent with those of restriction-enzyme digestion. The two-way gene sequencing was completed by the Beijing Genomics Institution, and results were analyzed with Chromas 2.33 (Figure 1B).

Anthropometric and Biochemical Measurements

Neck circumference (NC), waist circumference (WC), and hip circumference (HC) of all patients were measured to the nearest 0.1 cm. Waist:hip ratio (WHR) was calculated as WC divided by HC, and BMI calculated as weight divided by height squared (kg/m^2). Glucose oxidase was used to detect plasma glucose at each time point of the oral glucose-tolerance test and chemiluminescence used to measure Ins levels. Hemoglobin A_{1c} (HbA_{1c}) was detected by HPLC. HDL-C, LDL-C, TGs, and TC were measured by the kinetic method (Beckman Coulter, Brea, CA, USA). The Ins-resistance index was assessed by a steady-state model (Homeostatic Model Assessment of Insulin Resistance [HOMA-IR] = fasting plasma glucose [FPG] \times fasting Ins [Fins]/22.5). The cIMT was measured by ultrasound, and mean values of left and right common cIMT were calculated.

Statistical Analysis

Data were analyzed using IBM SPSS version 20.0 software. Quantitative data conforming to normal distribution

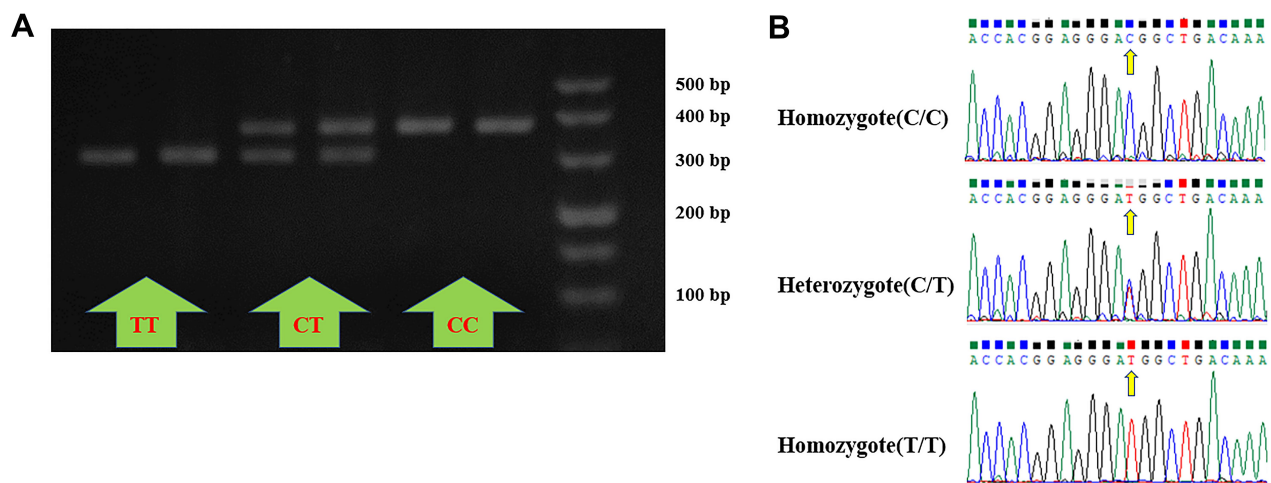


Figure 1 Genotyping and validation results of rs2278426. (A) Electrophoretic results of restriction-enzyme products: CC (one band at 387 bp), CT (two bands at 387 bp and 331 bp), and TT (one band at 331 bp). (B) Results of DNA sequencing: CC, CT, and TT genotypes from top to bottom, and position indicated by arrows was the mutation site.

are expressed as means \pm SD, and Student's *t*-test was used for comparison between the groups. For data of abnormal distribution, medians and quartile spacing were used, and for comparison between the groups the nonparametric Mann–Whitney *U* test was used. Qualitative data are expressed as frequency, and χ^2 tests were used to compare differences in rs2278426 genotype and allele frequency between the groups. Logistic regression was used to estimate the relative risk of genotypes. Differences were considered significant at $P < 0.05$. Distribution of SNP genotype and allele frequency were calculated using direct counting, then tested for fitting Hardy–Weinberg balance with goodness-of-fit χ^2 test. When $P > 0.05$, the genotype–distribution frequency conforms with the Hardy–Weinberg equilibrium law, and samples are representative of the population.

Results

Comparison of General Data and Biochemical Indices

Compared with the NGT group, BMI, NC, WC, WHR, systolic blood pressure (SBP), FPG, 2hPG, HbA_{1c}, FIns,

Ins at 2h on Ins-release test (2hIns), and HOMA-IR increased, while HDL-C and LDL-C decreased significantly in the T2DM without cIMT group (cIMT < 1 mm, $P < 0.05$). On the other hand, BMI, NC, WC, HC, WHR, SBP, diastolic BP (DBP), total TGs, FPG, 2hPG, HbA_{1c}, FIns, 2hIns, and HOMA-IR were significantly higher, while HDL-C was significantly lower in the T2DM with cIMT group (cIMT \geq 1 mm) than in the NGT group ($P < 0.05$). In T2DM patients, levels of HC, SBP, DBP, TG, and FIns were significantly higher in the cIMT group, while HDL-C was significantly lower in the cIMT group ($P < 0.05$, Table 1).

rs2278426 Gene Polymorphism and Risk of T2DM

Frequency of the CC, CT, and TT genotypes was 65.2%, 29.9%, and 5.0% in the NGT group and 54.4%, 38.7%, and 6.9% in the T2DM group, respectively. The Hardy–Weinberg test was used to test genetic balance in all subjects ($\chi^2 = 0.367$, $P > 0.05$ in controls; $\chi^2 = 0$, $P > 0.05$ in T2DM), as shown in Table 2. There were significant differences in the distribution of genotypes between the two groups, and the frequency of CT-genotype distribution

Table 1 Comparison of General Data and Biochemical Indices

	NGT (n=201)	T2DM (n=217)	
		cIMT < 1 mm (n=109)	cIMT \geq 1 mm (n=108)
Age	48.78 \pm 9.31	58.06 \pm 12.21	65.71 \pm 9.40
Sex (M/F)	92/109	62/47	66/42
BMI (kg/m ²)	23.69 \pm 3.75	24.63 \pm 3.49*	25.32 \pm 3.19*
NC (cm)	34.11 \pm 3.38	36.15 \pm 3.47*	36.48 \pm 3.33*
WC (cm)	81.47 \pm 11.83	88.90 \pm 10.04*	91.36 \pm 8.90*
HC (cm)	94.62 \pm 7.09	95.02 \pm 8.11	97.30 \pm 7.16* [†]
WHR	0.85 \pm 0.07	0.93 \pm 0.05*	0.93 \pm 0.06*
SBP (mmHg)	120.25 \pm 15.04	130.71 \pm 16.12*	136.52 \pm 15.01* [†]
DBP (mmHg)	78.25 \pm 11.19	78.77 \pm 9.55	81.38 \pm 9.25* [†]
TC (mmol/L)	4.69 \pm 0.83	4.56 \pm 1.04	4.82 \pm 1.03
HDL-C (mmol/L)	1.37 \pm 0.99	1.12 \pm 0.32*	0.99 \pm 0.25* [†]
LDL-C (mmol/L)	2.70 (2.29–3.19)	2.53 (2.03,2.90)*	2.62 (2.05,3.23)
TGs (mmol/L)	1.39 \pm 0.82	1.55 \pm 0.73	1.92 \pm 0.76* [†]
FPG (mmol/L)	5.15 \pm 0.46	9.89 \pm 3.56*	9.40 \pm 2.97*
2hPG (mmol/L)	5.88 \pm 1.11	17.76 \pm 5.53*	17.78 \pm 5.12*
HbA _{1c}	5.40 \pm 0.28	8.96 \pm 1.91*	8.82 \pm 1.85*
FIns (μ U/mL)	5.68 (4.12–7.94)	7.28 (4.14,12.47)*	9.85 (5.07,16.00)* [†]
2hIns (μ U/mL)	25.76 (17.14–43.82)	31.01 (16.94,52.34)	40.09 (24.62,63.74)*
HOMA-IR	1.31 (0.92–1.84)	3.07 (1.83,5.11)*	4.04 (2.22,6.65)*

Notes: * $P \leq 0.05$ between NGT and cIMT < 1 mm or cIMT \geq 1 mm; $P \leq 0.05$ between cIMT < 1 mm and cIMT \geq 1 mm.

Abbreviations: BMI, body mass index; NC, neck circumference; WC, waist circumference; HC, hip circumference; WHR, waist:hip ratio; SBP, systolic blood pressure; DBP, diastolic blood pressure; TC, total cholesterol; HDL-C, high-density lipoprotein cholesterol; LDL-C, low-density lipoprotein cholesterol; TGs, total triglycerides; FPG, fasting plasma glucose; 2hPG, plasma glucose at 2 hours (oral glucose-tolerance test); HbA_{1c}, hemoglobin A_{1c}; FIns, fasting insulin; 2hIns, insulin at 2 hours on insulin-release test.

Table 2 Hardy-Weinberg Equilibrium Coincidence Test of rs2278426 SNP

Genotype	NGT		χ^2	P	T2DM		χ^2	P
	Observed Cases	Expected Cases			Observed Cases	Expected Cases		
C/C	131	129	0.367	0.833	118	118	0.000	0.999
C/T	60	64			84	84		
T/T	10	8			15	15		

in the T2DM group increased significantly. In analysis of the dominant model, the distribution frequency of CT+TT in the T2DM group (45.6%) was significantly higher than in the NGT group (34.8%, $P<0.05$). Relative-risk analysis showed that the CT+TT genotype was a risk factor of T2DM (OR 1.57, 95% CI 1.05–2.32). Distribution of rs2278426 alleles also showed the same trend of difference. Distribution frequency of the T allele in the T2DM group was 26.3%, significantly higher than in the NGT group (19.9%, $P<0.05$), and T carriers had a higher risk of T2DM (OR 1.43, 95% CI 1.03–1.98; [Table 3](#)).

rs2278426 Gene Polymorphism and Risk of Carotid Intima–Media Thickening in T2DM

Frequency of the CC, CT and TT genotypes was 65.1%, 29.4%, and 5.5% in the T2DM without cIMT group and 43.5%, 48.1%, and 8.3% in the T2DM with cIMT group. There were significant differences in genotype distribution between the groups ($P<0.05$). Frequency of the CC genotype

was lower and that of the CT+TT genotype higher in the T2DM with cIMT group. In the dominant model, distribution frequency of the CT+TT genotype was significantly higher in the T2DM with cIMT group (56.5%) than the T2DM without cIMT group (34.9%, $P<0.05$). Relative-risk analysis showed that the CT+TT genotype was a risk factor of cIMT in T2DM patients (OR 2.42, 95% CI 1.40–4.19). The distribution of rs2278426 alleles also showed the same trend. Frequency of the T allele was 32.4% in the T2DM with cIMT group, significantly higher than in the T2DM without cIMT group (20.2%, $P<0.05$), and T2DM patients with the T allele had a higher risk of cIMT (OR 1.89, 95% CI 1.22–2.93); [Table 4](#)).

Comparison of General Data among Genotypes

In all subjects, WHR with the CT+TT genotype was significantly higher than the CC genotype. This may be due to relatively larger WC in CT+TT carriers ($P=0.071$), but

Table 3 rs2278426 Gene Polymorphism and Risk of T2DM

	NGT (n=201)	T2DM (n=217)	P	OR (95% CI)
rs2278426 (C/T)				
CC	131 (65.2%)	118 (54.4%)	0.079	
CT	60 (29.9%)	84 (38.7%)	0.036*	1.55 (1.02–2.35)
TT	10 (5.0%)	15 (6.9%)	0.229	1.66 (0.72–3.84)
Recessive model				
CC+CT	191 (95.0%)	202 (93.1%)		
TT	10 (5.0%)	15 (6.9%)	0.404	1.41 (0.62–3.23)
Dominant model				
CC	131 (65.2%)	118 (54.4%)		
CT+TT	70 (34.8%)	99 (45.6%)	0.025*	1.57 (1.05–2.32)
Allele				
C	322 (80.1%)	320 (73.7%)		
T	80 (19.9%)	114 (26.3%)	0.029*	1.43 (1.03–1.98)

Note: * $P\leq 0.05$.

Table 4 rs2278426 Gene Polymorphism and the Risk of Carotid Intima–Media Thickening in T2DM

	cIMT<1 mm (n=109)	cIMT ≥1 mm (n=108)	P	OR (95% CI)
rs2278426 (C/T)				
CC	71 (65.1%)	47 (43.5%)	0.006*	
CT	32 (29.4%)	52 (48.1%)	0.002*	2.45 (1.38–4.35)
TT	6 (5.5%)	9 (8.3%)	0.136	2.26 (0.75–6.78)
Recessive model				
CC+CT	103 (94.5%)	99 (91.7%)		
TT	6 (5.5%)	9 (8.3%)	0.411	1.56 (0.53–4.54)
Dominant model				
CC	71 (65.1%)	47 (43.5%)		
CT+TT	38 (34.9%)	61 (56.5%)	0.001*	2.42 (1.40–4.19)
Allele				
C	174 (79.8%)	146 (67.6%)		
T	44 (20.2%)	70 (32.4%)	0.004*	1.89 (1.22–2.93)

Note: * $P\leq 0.05$.

in the NGT and T2DM groups, the difference weakened. In the NGT group, SBP and DBP with the CT+TT genotype were slightly higher than the CC genotype, but did not reach statistical significance ($P=0.052$ and $P=0.058$, respectively). There were no significant differences among the genotypes in other general data (Table 5).

Comparison of Lipid-Metabolism Indices among Genotypes

In both overall subjects and the NGT and T2DM groups individually, we found that TGs of CT+TT-genotype carriers were significantly higher than CC-genotype carriers ($P<0.05$). Also, in the T2DM group HDL-C levels with the CT+TT genotype were significantly lower than with the CC genotype ($P<0.05$), and no significant difference was found in subjects overall or the NGT group (Table 5).

Comparison of Glucose- and Insulin-Metabolism Indices among Genotypes

Compared with CC-genotype carriers, CT+TT-genotype carriers had significantly higher 2hPG overall. FPG levels showed a similar trend, but did not reach statistical significance ($P=0.076$). HbA_{1c} levels with the CT+TT genotype were also higher than with the CC genotype ($P=0.075$). Levels of 2hIns and HOMA-IR with the CT+TT genotype were significantly higher than those with the CC genotype ($P<0.05$). In the NGT group and T2DM groups, there was no significant difference in glucose or Ins metabolism between the genotypes, except that HOMA-IR with the CT+TT genotype in the NGT group was slightly higher than with the CC genotype ($P=0.085$, Table 5).

Logistic Regression Analysis of Risk of Carotid Intima–Media Thickening in T2DM

Risk factors of cIMT in T2DM patients were age, sex, BMI, TGs, SBP, and rs2278426 T allele. After adjusting for age, sex, BMI, TGs, and SBP, the rs2278426 T allele was still an independent risk factor of cIMT in T2DM (Table 6).

Discussion

In this study, we found that the *ANGPTL8* gene rs2278426 polymorphism was related to T2DM and cIMT in T2DM, and also to Ins resistance, glucose, and lipid metabolism. In general, the T allele of this locus can increase the risk of

Table 5 Comparison of General Data and Biochemical Indices Among Genotypes

	Overall			NGT			T2DM		
	CC	CT+TT	P	CC	CT+TT	P	CC	CT+TT	P
WC (cm)	85.13±11.81	87.20±11.04	0.071	80.66±11.85	83.00±11.70	0.182	90.09±9.61	90.17±9.52	0.949
WHR	0.89±0.07	0.91±0.07	0.012*	0.85±0.07	0.86±0.07	0.130	0.93±0.05	0.94±0.05	0.483
SBP (mmHg)	126.18±17.09	128.66±16.33	0.140	118.75±14.74	123.07±15.29	0.052	134.44±15.73	132.61±15.94	0.399
DBP (mmHg)	78.63±10.92	80.03±9.45	0.175	77.16±11.57	80.30±10.20	0.058	80.27±9.94	79.84±8.93	0.744
TC (mmol/L)	4.67±0.95	4.72±0.94	0.551	4.63±0.84	4.82±0.81	0.116	4.71±1.06	4.66±1.02	0.688
HDL-C (mmol/L)	1.25±0.70	1.15±0.79	0.167	1.38±0.91	1.34±1.14	0.802	1.10±0.26	1.01±0.32	0.020*
LDL-C (mmol/L)	2.75±1.48	2.70±0.78	0.690	2.90±1.89	2.89±0.74	0.954	2.58±0.79	2.57±0.79	0.892
TG (mmol/L)	1.42±0.68	1.78±0.93	0.000*	1.24±0.65	1.65±1.01	0.001*	1.62±0.66	1.87±0.87	0.014*
FPG (mmol/L)	7.25±3.26	7.83±3.28	0.076	5.12±0.49	5.20±0.38	0.236	9.62±3.40	9.69±3.15	0.866
2hPG (mmol/L)	11.47±7.09	12.94±7.08	0.038*	5.82±1.08	6.00±1.14	0.271	17.70±5.50	17.85±5.12	0.837
HbA _{1c}	7.05±2.22	7.45±2.20	0.075	5.40 (5.20–5.60)	5.40 (5.20–5.60)	0.739	8.90±1.95	8.89±1.79	0.975
FIns (μU/mL)	6.24 (4.05–10.19)	7.22 (4.79–12.35)	0.110	5.41 (3.85–7.35)	6.22 (4.73–8.59)	0.623	8.07 (4.37–14.07)	9.35 (5.11–15.75)	0.542
2hIns (μU/mL)	28.86 (17.14–49.77)	36.07 (20.17–55.83)	0.005*	24.62 (17.13–43.59)	33.44 (17.43–49.53)	0.947	34.42 (17.78–51.20)	40.70 (21.89–57.99)	0.247
HOMA-IR	1.68 (1.07–3.46)	2.33 (1.36–4.29)	0.005*	1.21 (0.82–1.70)	1.42 (1.03–2.00)	0.085	3.29 (1.87–5.73)	3.66 (2.33–6.58)	0.249

Note: * $P\leq 0.05$.

Table 6 Logistic Regression Analysis of Risk of Carotid Intima-Media Thickening in T2DM

	β	SE	Wald χ^2	P	OR	95% CI
rs2278426 (T)	0.939	0.314	8.921	0.003	2.557	1.381–4.734
Age	0.073	0.017	19.038	0.000	1.075	1.041–1.111
Sex	0.447	0.315	2.013	0.156	1.563	0.843–2.898
BMI	0.007	0.048	0.019	0.891	1.007	0.917–1.105
TGs	0.628	0.225	7.793	0.005	1.875	1.206–2.914
SBP	0.010	0.010	0.935	0.333	1.010	0.990–1.031
Constant	–8.746	1.934	20.444	0.000	0.000	

T2DM. At the same time, T2DM patients with the T allele are more likely to have cIMT. In addition to environmental factors, the occurrence and development of T2DM are closely related to genetic factors. Many genes and polymorphisms have been confirmed to be related to T2DM. It has been found that the T allele at *ANGPTL8* rs2278426 significantly increased the risk of T2DM.²⁶ In this study, we first verified previous research results and reached the same conclusions. Analysis of the dominant model showed that the frequency of the CT+TT genotype in T2DM group (45.6%) was significantly higher than in the NGT group (34.8%). Relative-risk analysis showed that the CT+TT genotype was a risk factor of T2DM (OR 1.57, 95% CI 1.05–2.32). Distribution of rs2278426 alleles also showed the same trend of difference. T carriers had a higher risk of T2DM (OR 1.43, 95% CI 1.03–1.98), suggesting that the rs2278426 polymorphism is closely related to T2DM.

With disease progression, most T2DM patients will inevitably develop diabetic complications, such as macroangiopathy, microangiopathy, and neuropathy, which will seriously affect their quality of life and increase the social burden.⁴ Among all complications, CVD is the main cause of death in T2DM patients. T2DM macroangiopathy is characterized by arterial IMT and atherosclerosis, and its occurrence is affected by many factors, such as BP, blood glucose, blood-lipid level, Ins resistance, while genetic factors have been studied widely in recent decades.^{25,26} Among these, SNPs of various susceptibility genes have been confirmed to be related to the occurrence and development of IMT, atherosclerosis, and macroangiopathy in T2DM patients.^{23–26} In this study, we found that rs2278426-genotype frequency was different in T2DM patients with and without cIMT. Genotype distribution of *ANGPTL8* rs2278426 in T2DM was CC 47 (43.5%), CT 52 (48.1%), and TT nine (8.3%). Frequency of the CT genotype increased significantly in the T2DM group, while

the CC genotype decreased significantly. Further dominant-model analysis showed that the frequency of the CT+TT genotype in T2DM group was significantly higher than in the T2DM group (34.9%). Relative-risk analysis showed that the CT+TT genotype was a risk factor of cIMT in T2DM patients (OR 2.42, 95% CI 1.40–4.19). Distribution of rs2278426 alleles also showed the same trend. T2DM patients with the T allele were at higher risk of cIMT (OR 1.89, 95% CI 1.22–2.93). Multivariate logistic regression analysis showed that the T allele of rs2278426 may be an independent risk factor of cIMT in T2DM patients (OR 2.557, $P=0.003$) after adjusting for age, sex, BMI, and other factors. Therefore, the rs2278426 gene polymorphism may be related to the risk of cIMT in T2DM patients. We note that in another study, the researchers also found that frequency of the T allele of rs2278426 in CVD patients was higher than in non-CVD patients, but the difference was not statistically significant.⁴¹ This may be due to ethnic differences or different grouping indicators.

T2DM macroangiopathy is characterized by atherosclerosis. In addition to the classic lipid-metabolism factors, the occurrence and development of T2DM macroangiopathy are also related to many factors, such as Ins resistance and hyperglycemia. *ANGPTL8* is composed of 198 amino acids, about 22 kDa in size. It is a cytokine secreted mainly by liver and adipose cells,²⁷ and the relationship between *ANGPTL8* and lipid metabolism, glucose metabolism, and Ins resistance has been widely studied.^{29–33} A previous study by our group found that levels of circulating *ANGPTL8* in patients with newly diagnosed T2DM was significantly higher than in healthy controls with NGT.³³ Later, more and more studies found that *ANGPTL8* is also related to pre-DM, retinopathy, and renal function in T2DM patients.^{36–38} Some researchers believe that the effect of *ANGPTL8* on glucose metabolism may be related to Ins resistance. In animal experiments, expression of *ANGPTL8* is increased in OB/OB, DB/DB and pregnant mice. In Ins-resistant mice induced by S961, serum levels of *ANGPTL8* also increased, and similar results have been found in clinical studies.^{34,42–45} On the other hand, Guo et al found that in HepG2 cells, *ANGPTL8* can improve Ins resistance through the Akt–GSK3 β or Akt–FoxO1 signaling pathway.³² Similarly, Luo et al found that *ANGPTL8* can improve Ins resistance and adipose-tissue inflammation in diet-induced obese mice.⁴⁶ Therefore, changes in protein structure and stability caused by *ANGPTL8* rs2278426 polymorphism may lead to Ins

resistance and glucose-metabolism disorders.¹³ In this study, we found that 2hPG, FIns, and HOMA-IR with the CT+TT genotype were significantly higher than with the CC genotype ($P<0.05$). These results suggest that *ANGPTL8* rs2278426 polymorphism may be involved in the process of T2DM and cIMT in T2DM through Ins resistance and glucose-metabolism disorders.

On the other hand, regulation of *ANGPTL8* on lipid metabolism may be realized by changing the active state of LPL. Two LPLs can be combined to form a biologically active LPL dimer, which hydrolyzes TGs from chylomicrons and very low-density lipoproteins to free fatty acids, which are absorbed by such peripheral tissue as fat, muscle, and heart, and also leads to the production of atherosclerotic factors, such as LDL-C.²⁹ Mamputu et al found that exogenous LPL can increase the adhesiveness of human monocytes and make it easier for them to enter the vascular wall. Therefore, the expression of LPL in the arterial wall promotes the formation of foam cells, which is very important in the pathogenesis of atherosclerosis.⁴⁷ In addition, LPL can also promote proliferation of smooth-muscle cells, and proliferation and transformation of smooth-muscle cells also play an important role in the occurrence and development of atherosclerosis.⁴⁸ Therefore, LPL is considered an important atherogenic factor. After *ANGPTL8* is combined with *ANGPTL3*, it can destroy the dimer of LPL and inhibit the activity of LPL.⁴⁹ In clinical studies, levels of *ANGPTL8* in the circulation of obese and overweight patients increases significantly.⁴⁰ The T allele at rs2278426 of *ANGPTL8* represents Arg59Trp replacement, but the circulating level of *ANGPTL8* is not affected.⁵⁰ Bioinformatics analysis has shown that Arg59Trp replacement caused by the T allele can reduce stability of the *ANGPTL8* protein.⁵¹ Therefore, the protein's stability and interaction with *ANGPTL3* may change. In subjects overall, as well as both the NGT and T2DM groups, we found that TG levels with the CT+TT genotype were significantly higher than with the CC genotype ($P<0.05$), while in the T2DM group HDL-C level of the CT+TT genotypes were significantly lower than the CC genotype ($P<0.05$). Therefore, the higher risk of cIMT in T-allele carriers may also be caused by the abnormal regulation of LPL and disorders in lipid metabolism caused by structural change of the *ANGPTL8* protein.¹³ The rs2278426 T allele of the *ANGPTL8* gene may cause changes in protein structure, disorder the inhibition of *ANGPTL8* on LPL activity, increase the

production of atherosclerotic factors, and increase the risk of cIMT in T2DM patients.

In general, this study found that *ANGPTL8* rs2278426 was related to blood glucose, Ins resistance, TG levels, and cIMT in T2DM. Levels of blood glucose, TGs, and Ins resistance in CT+TT-genotype and T-allele carriers were significantly higher than in CC-genotype or C-allele carriers. Combined with previous studies and the results of this study, we speculate that *ANGPTL8* polymorphism may participate in the process of cIMT by affecting Ins resistance, blood-glucose control, and lipid metabolism by regulating LPL activity. At the same time, there are some shortcomings in this study. Firstly, the sample in this study was rather small, secondly, we did not strictly restrict the use of statins in T2DM patients, and thirdly, this was a cross-sectional study, which cannot fully reveal the mechanism of gene polymorphism affecting the risk of cIMT. In future, while controlling the influence of drug factors, prospective studies of larger samples should be carried out so as to explore the mechanism behind them more deeply. In sum, we found that the CT+TT genotype of *ANGPTL8* rs2278426 increased the risk of cIMT in T2DM patients.

Conclusion

In this study, we found that frequency of the CT+TT genotype at rs2278426 was significantly increased in T2DM patients with cIMT compared to those with T2DM without cIMT. The rs2278426 polymorphism of the *ANGPTL8* gene was associated with glucose, lipid, Ins metabolism, and risk of cIMT in T2DM patients. Compared with the CC genotype, the CT+TT genotype increased the risk of cIMT in T2DM patients.

Compliance with Ethical Standards

Patients and control subjects were informed about the purpose of the study, which was conducted in accordance with the Declaration of Helsinki.

Funding

This study was supported in part by grants from the National Natural Science Foundation of China (81870548, 81570721), Key Research and Development Projects of Social Development in Jiangsu Province, China (BE2018692), the Natural Science Foundation of Jiangsu Province, China (BK2019222, BK20151331), the High Caliber Medical Personnel Foundation of Jiangsu Province (LGY2016053), the Six Talent Peaks Project in

Jiangsu Province (2015-WSN-006), the Science and Technology Commission of Zhenjiang City (SH2019041), and the 169-Phase V Science Research Project of Zhenjiang.

Disclosure

The authors report no potential conflicts of interest in this work.

References

- Kahn SE. Clinical review 135: the importance of beta-cell failure in the development and progression of type 2 diabetes. *J Clin Endocrinol Metab.* 2001;86(9):4047–4058. doi:10.1210/jcem.86.9.7713
- Carracher AM, Marathe PH, Close KL. International Diabetes Federation 2017. *J Diabetes.* 2018;10(5):353–356. doi:10.1111/1753-0407.12644
- NCD Risk Factor Collaboration (NCD-RisC). Worldwide trends in diabetes since 1980: a pooled analysis of 751 population-based studies with 4.4 million participants [published correction appears in *Lancet*. 2017 Feb 4;389(10068):e2]. *Lancet.* 2016;387(10027):1513–1530. doi:10.1016/S0140-6736(16)00618-8.
- Beckman JA, Creager MA, Libby P. Diabetes and atherosclerosis: epidemiology, pathophysiology, and management. *JAMA.* 2002;287(19):2570–2581. doi:10.1001/jama.287.19.2570
- Vamos EP, Millett C, Parsons C, et al. Nationwide study on trends in hospital admissions for major cardiovascular events and procedures among people with and without diabetes in England, 2004–2009. *Diabetes Care.* 2012;35(2):265–272. doi:10.2337/dc11-1682
- Pignoli P, Tremoli E, Poli A, et al. Intimal plus medial thickness of the arterial wall: a direct measurement with ultrasound imaging. *Circulation.* 1986;74(6):1399–1406. doi:10.1161/01.cir.74.6.1399
- Wikstrand J. Methodological considerations of ultrasound measurement of carotid artery intima-media thickness and lumen diameter. *Clin Physiol Funct Imaging.* 2007;27(6):341–345. doi:10.1111/j.1475-097X.2007.00757.x
- Bots ML, Mulder PG, Hofman A, et al. Reproducibility of carotid vessel wall thickness measurements. The Rotterdam Study. *J Clin Epidemiol.* 1994;47(8):921–930. doi:10.1016/0895-4356(94)90196-1
- Persson J, Formgren J, Israelsson B, et al. Ultrasound-determined intima-media thickness and atherosclerosis. Direct and indirect validation. *Arterioscler Thromb.* 1994;14(2):261–264. doi:10.1161/01.atv.14.2.261
- Espeland MA, Craven TE, Riley WA, et al. Reliability of longitudinal ultrasonographic measurements of carotid intimal-medial thicknesses. Asymptomatic Carotid Artery Progression Study Research Group. *Stroke.* 1996;27(3):480–485. doi:10.1161/01.str.27.3.480
- Coskun U, Yildiz A, Esen OB, et al. Relationship between carotid intima-media thickness and coronary angiographic findings: a prospective study. *Cardiovasc Ultrasound.* 2009;7:59. doi:10.1186/1476-7120-7-59
- Geroulakos G, O’Gorman DJ, Kalodiki E, et al. The carotid intima-media thickness as a marker of the presence of severe symptomatic coronary artery disease. *Eur Heart J.* 1994;15(6):781–785. doi:10.1093/oxfordjournals.eurheartj.a060585
- Crouse JR, Toole JF, McKinney WM, et al. Risk factors for extracranial carotid artery atherosclerosis. *Stroke.* 1987;18(6):990–996. doi:10.1161/01.str.18.6.990
- Poli A, Tremoli E, Colombo A, et al. Ultrasonographic measurement of the common carotid artery wall thickness in hypercholesterolemic patients. A new model for the quantitation and follow-up of preclinical atherosclerosis in living human subjects. *Atherosclerosis.* 1988;70(3):253–261. doi:10.1016/0021-9150(88)90176-1
- Tell GS, Howard G, McKinney WM. Risk factors for site specific extracranial carotid artery plaque distribution as measured by B-mode ultrasound. *J Clin Epidemiol.* 1989;42(6):551–559. doi:10.1016/0895-4356(89)90151-0
- Salonen R, Salonen JT. Progression of carotid atherosclerosis and its determinants: a population-based ultrasonography study. *Atherosclerosis.* 1990;81(1):33–40. doi:10.1016/0021-9150(90)90056-o
- Salonen R, Salonen JT. Carotid atherosclerosis in relation to systolic and diastolic blood pressure: kuopio Ischaemic Heart Disease Risk Factor Study. *Ann Med.* 1991;23(1):23–27. doi:10.3109/07853899109147926
- Taskinen MR, Borén J. New insights into the pathophysiology of dyslipidemia in type 2 diabetes. *Atherosclerosis.* 2015;239(2):483–495. doi:10.1016/j.atherosclerosis.2015.01.039
- Taskinen MR. Type 2 diabetes as a lipid disorder. *Curr Mol Med.* 2005;5(3):297–308. doi:10.2174/1566524053766086
- Chapman MJ, Ginsberg HN, Amarenco P, et al. Triglyceride-rich lipoproteins and high-density lipoprotein cholesterol in patients at high risk of cardiovascular disease: evidence and guidance for management. *Eur Heart J.* 2011;32(11):1345–1361. doi:10.1093/eurheartj/ehrl12
- Isomaa B, Almgren P, Tuomi T, et al. Cardiovascular morbidity and mortality associated with the metabolic syndrome. *Diabetes Care.* 2001;24(4):683–689. doi:10.2337/diacare.24.4.683
- Nichols GA, Hillier TA, Erbey JR, et al. Congestive heart failure in type 2 diabetes: prevalence, incidence, and risk factors. *Diabetes Care.* 2001;24(9):1614–1619. doi:10.2337/diacare.24.9.1614
- Ma X, Lu R, Gu N, et al. Polymorphisms in the glucagon-like peptide 1 receptor (GLP-1R) gene are associated with the risk of coronary artery disease in chinese han patients with type 2 diabetes mellitus: a case-control study. *J Diabetes Res.* 2018;2018:1054192. doi:10.1155/2018/1054192
- Ezhilarasi K, Dhamodharan U, Vijay V. BSMI single nucleotide polymorphism in vitamin D receptor gene is associated with decreased circulatory levels of serum 25-hydroxyvitamin D among micro and macrovascular complications of type 2 diabetes mellitus. *Int J Biol Macromol.* 2018;116:346–353. doi:10.1016/j.ijbiomac.2018.05.026
- Hanson RL, Leti F, Tsinajinnie D, et al. The Arg59Trp variant in ANGPTL8 (betatrophin) is associated with total and HDL-cholesterol in American Indians and Mexican Americans and differentially affects cleavage of ANGPTL3. *Mol Genet Metab.* 2016;118(2):128–137. doi:10.1016/j.ymgme.2016.04.007
- Liu J, Yagi K, Nohara A, et al. High frequency of type 2 diabetes and impaired glucose tolerance in Japanese subjects with the angiotensin-like protein 8 R59W variant. *J Clin Lipidol.* 2018;12(2):331–337. doi:10.1016/j.jacl.2017.12.011
- Dang F, Wu R, Wang P, et al. Fasting and feeding signals control the oscillatory expression of angptl8 to modulate lipid metabolism. *Sci Rep.* 2016;6:36926. doi:10.1038/srep36926
- Zhang R, Abou-Samra AB. A dual role of lipasin (betatrophin) in lipid metabolism and glucose homeostasis: consensus and controversy. *Cardiovasc Diabetol.* 2014;13:133. doi:10.1186/s12933-014-0133-8
- Ren G, Kim JY, Smas CM. Identification of RIFL, a novel adipocyte-enriched insulin target gene with a role in lipid metabolism. *Am J Physiol Endocrinol Metab.* 2012;303(3):E334–51. doi:10.1152/ajpendo.00084.2012
- Stephens JM. RIFL aims to be a new player in lipid metabolism. *Am J Physiol Endocrinol Metab.* 2012;303(3):E332–3. doi:10.1152/ajpendo.00169.2012
- Zhang R. Lipasin, a novel nutritionally-regulated liver-enriched factor that regulates serum triglyceride levels. *Biochem Biophys Res Commun.* 2012;424(4):786–792. doi:10.1016/j.bbrc.2012.07.038
- Rong Guo X, Li Wang X, Chen Y, et al. ANGPTL8/betatrophin alleviates insulin resistance via the Akt-GSK3 β or Akt-FoxO1 pathway in HepG2 cells. *Exp Cell Res.* 2016;345(2):158–167. doi:10.1016/j.yexcr.2015.09.012

33. Hu H, Sun W, Yu S, et al. Increased circulating levels of betatrophin in newly diagnosed type 2 diabetic patients. *Diabetes Care*. 2014;37(10):2718–2722. doi:10.2337/dc14-0602
34. Chen X, Lu P, He W, et al. Circulating betatrophin levels are increased in patients with type 2 diabetes and associated with insulin resistance. *J Clin Endocrinol Metab*. 2015;100(1):E96–100. doi:10.1210/jc.2014-2300
35. Ebert T, Kralisch S, Hoffmann A, et al. Circulating angiopoietin-like protein 8 is independently associated with fasting plasma glucose and type 2 diabetes mellitus. *J Clin Endocrinol Metab*. 2014;99(12):E2510–7. doi:10.1210/jc.2013-4349
36. Chen CC, Susanto H, Chuang WH, et al. Higher serum betatrophin level in type 2 diabetes subjects is associated with urinary albumin excretion and renal function. *Cardiovasc Diabetol*. 2016;15:3. doi:10.1186/s12933-015-0326-9
37. Wang YY, Zhang D, Jiang ZY, et al. Positive association between betatrophin and diabetic retinopathy risk in type 2 diabetes patients. *Horm Metab Res*. 2016;48(3):169–173. doi:10.1055/s-0035-1550009
38. Yin Y, Ding X, Peng L, et al. Increased serum ANGPTL8 concentrations in patients with prediabetes and type 2 diabetes. *J Diabetes Res*. 2017;2017:8293207. doi:10.1155/2017/8293207
39. Shimamura M, Matsuda M, Kobayashi S, et al. Angiopoietin-like protein 3, a hepatic secretory factor, activates lipolysis in adipocytes. *Biochem Biophys Res Commun*. 2003;301(2):604–609. doi:10.1016/s0006-291x(02)03058-9
40. Ye J, Qin Y, Wang D, et al. The relationship between circulating ANGPTL8/betatrophin concentrations and adult obesity: a meta-analysis. *Dis Markers*. 2019;2019:5096860. doi:10.1155/2019/5096860
41. El-Lebedy D. Interaction between endothelial nitric oxide synthase rs1799983, cholesteryl ester-transfer protein rs708272 and angiopoietin-like protein 8 rs2278426 gene variants highly elevates the risk of type 2 diabetes mellitus and cardiovascular disease. *Cardiovasc Diabetol*. 2018;17(1):97. doi:10.1186/s12933-018-0742-8
42. Fu Z, Berhane F, Fite A, et al. Elevated circulating lipasin/betatrophin in human type 2 diabetes and obesity. *Sci Rep*. 2014;4:5013. doi:10.1038/srep05013
43. Espes D, Martinell M, Carlsson PO. Increased circulating betatrophin concentrations in patients with type 2 diabetes. *Int J Endocrinol*. 2014;2014:323407. doi:10.1155/2014/323407
44. Trebotic LK, Klimek P, Thomas A, et al. Circulating betatrophin is strongly increased in pregnancy and gestational diabetes mellitus. *PLoS One*. 2015;10(9):e0136701. doi:10.1371/journal.pone.0136701
45. Ebert T, Kralisch S, Wurst U, et al. Betatrophin levels are increased in women with gestational diabetes mellitus compared to healthy pregnant controls. *Eur J Endocrinol*. 2015;173(1):1–7. doi:10.1530/EJE-14-0815
46. Luo D, Chen X, Yang W, et al. Angiopoietin-like 8 improves insulin resistance and attenuates adipose tissue inflammation in diet-induced obese mice. *Exp Clin Endocrinol Diabetes*. 2020;128(5):290–296. doi:10.1055/a-0725-7897
47. Mamputu JC, Desfaits AC, Renier G. Lipoprotein lipase enhances human monocyte adhesion to aortic endothelial cells. *J Lipid Res*. 1997;38(9):1722–1729.
48. Mamputu JC, Levesque L, Renier G. Proliferative effect of lipoprotein lipase on human vascular smooth muscle cells. *Arterioscler Thromb Vasc Biol*. 2000;20(10):2212–2219. doi:10.1161/01.atv.20.10.2212
49. Kovrov O, Kristensen KK, Larsson E, et al. On the mechanism of angiopoietin-like protein 8 for control of lipoprotein lipase activity. *J Lipid Res*. 2019;60(4):783–793. doi:10.1194/jlr.M088807
50. Abu-Farha M, Melhem M, Abubaker J, et al. ANGPTL8/Betatrophin R59W variant is associated with higher glucose level in non-diabetic Arabs living in Kuwait. *Lipids Health Dis*. 2016;15:26. doi:10.1186/s12944-016-0195-6
51. Ghasemi H, Karimi J, Khodadadi I, et al. Association between rs2278426 (C/T) and rs892066 (C/G) variants of ANGPTL8 (betatrophin) and susceptibility to type2 diabetes mellitus. *J Clin Lab Anal*. 2019;33(1):e22649. doi:10.1002/jcla.22649

Diabetes, Metabolic Syndrome and Obesity: Targets and Therapy

Dovepress

Publish your work in this journal

Diabetes, Metabolic Syndrome and Obesity: Targets and Therapy is an international, peer-reviewed open-access journal committed to the rapid publication of the latest laboratory and clinical findings in the fields of diabetes, metabolic syndrome and obesity research. Original research, review, case reports, hypothesis formation, expert opinion

and commentaries are all considered for publication. The manuscript management system is completely online and includes a very quick and fair peer-review system, which is all easy to use. Visit <http://www.dovepress.com/testimonials.php> to read real quotes from published authors.

Submit your manuscript here: <https://www.dovepress.com/diabetes-metabolic-syndrome-and-obesity-targets-and-therapy-journal>