

Embolization with NBCA for Ruptured Aneurysm Located in the Moyamoya-like Collateral Network Associated with Isolated Middle Cerebral Artery Occlusion

Abstract

Collateral vessel formation in moyamoya disease is a well-described phenomenon. However, the occurrence of unusual anastomosis pattern (moyamoya-like) associated with isolated middle cerebral artery (MCA) stenosis or occlusion has been reported very rarely and is not well known the relationship with aneurysm. We report a case of ruptured aneurysm treated with N-butyl cyanoacrylate (NBCA) located in moyamoya like collateral network with isolated MCA occlusion.

Keywords: Aneurysm, moyamoya, N-butyl cyanoacrylate

Cheol Young Lee

Department of Neurosurgery,
Konyang University Hospital,
Daejeon, South Korea

Introduction

Atherosclerotic steno-occlusive disease of major intracranial arteries has been known the main cause of stroke worldwide and more frequent and severe than extracranial disease. In severe stenosis or occlusion of major artery with poor perfusion state, various vascular networks can be occurred. The moyamoya angiographic pattern has also been seen in association with stenosis in the posterior circulation and in association with a variety of vascular anomalies.^[1] The occurrence of moyamoya like collateralization in isolated middle cerebral atherosclerotic stenosis or occlusion has been reported very rarely, and abnormal vascular network may be associated with aneurysm formation.^[2] We present clinical case of ruptured aneurysms located in the collateral network of moyamoya pattern in the middle cerebral artery (MCA) occlusions.

Case Report

A 54-year-old woman with a history of hypertension was admitted to our hospital with a sudden, thunderclap headache. Neurological examination showed drowsy consciousness without language and motor impairment. Computerized tomography (CT) scan revealed subarachnoid hemorrhage in both sylvian fissure and basal cistern [Figure 1a]. CT angiography showed left proximal M1 segment

occlusion with faint distal filling. There is no definite aneurysmal sac in CT angiography [Figure 1b]. Conventional and 3D rotational angiogram defined a moyamoya-like collateral network in occluded MCA area and a small aneurysm suspected as pseudoaneurysm was found in internal carotid artery (ICA) bifurcation area [Figure 1c and d]. At first, we thought ICA bifurcation aneurysm, but the selection of microcatheter and microwire into aneurysm was not achieved despite several attempts. Looking closely at angiography, we thought an aneurysm could arise from collateral artery behind ICA bifurcation. Microcatheter was navigated collateral artery, and on microcatheter angiogram, a small aneurysm located in collateral network was found [Figure 1e]. Our initial plan was to reach as close to the aneurysm as possible and embolize the aneurysm with coils or embolic material. However, accessing the microcatheter close to the aneurysm was a very demanding task because of the complex vascular network. Although attempting coiling after approaching the parent artery as close as possible to the aneurysm, the microcatheter could not provide sufficient support for coiling. We tried to embolize with lower concentration (about 30%) of NBCA glue to reach the pseudoaneurysm. Embolization with NBCA was successful, and aneurysm was not visible in angiography [Figure 1f]. Because the pseudoaneurysm was likely to

Address for correspondence:
Prof. Cheol Young Lee,
Department of Neurosurgery,
Konyang University Hospital,
Daejeon, South Korea.
E-mail: leecy009@hanmail.net

Access this article online

Website: www.asianjns.org

DOI: 10.4103/ajns.AJNS_127_17

Quick Response Code:



How to cite this article: Lee CY. Embolization with NBCA for ruptured aneurysm located in the moyamoya-like collateral network associated with isolated middle cerebral artery occlusion. Asian J Neurosurg 2018;13:1236-8.

This is an open access journal, and articles are distributed under the terms of the Creative Commons Attribution-NonCommercial-ShareAlike 4.0 License, which allows others to remix, tweak, and build upon the work non-commercially, as long as appropriate credit is given and the new creations are licensed under the identical terms.

For reprints contact: reprints@medknow.com

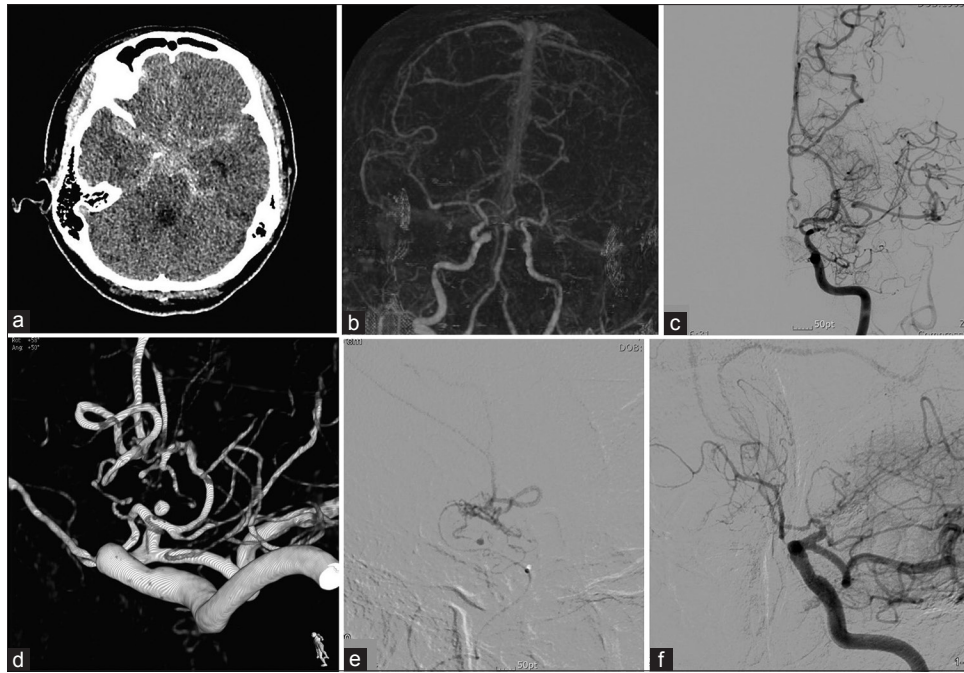


Figure 1: (a) Computerized tomography scan showed subarachnoid hemorrhage in both Sylvian fissure and basal cistern. (b) Computerized tomography angiography showed left proximal M1 segment occlusion with faint distal filling. There is no definite aneurysmal sac in computerized tomography angiography. (c) Conventional angiogram revealed a moyamoya like a collateral network in occluded middle cerebral artery area. (d) Three-dimensional rotational angiogram revealed small aneurysm (suspected as pseudoaneurysm) in internal carotid artery bifurcation area. (e) On microcatheter angiogram, a small aneurysm located in collateral network was found. (f) Embolization with N-butyl cyanoacrylate was successful, and aneurysm was not visible in angiography

be refilled due to retrograde flow within collateral network, repeated angiography with regular interval should be needed after embolization. Although at first, we intended to use coils, NBCA glue can be a handy embolic agent when the microcatheter is unable to reach to the pseudoaneurysm or could not provide enough supporting in coiling. Ten days later, follow-up angiography was performed, and there was no recanalization of aneurysm. The patient was discharged without neurologic deficit.

Discussion

A moyamoya collateral pattern in isolated MCA occlusions has also been described among Japanese patients, but there are few reports in non-Japanese patients.^[3,4] However, natural history of this entity has not been well described. Most patients with isolated MCA steno-occlusive disease do not have severe perfusion impairment unless they have another intracranial vascular occlusion. Kato *et al.*^[5] by PET examinations, reported significant cerebral perfusion impairment in patients with occlusion of the MCA with moyamoya phenomenon compared with patients without moyamoya vessels. In addition, Tanaka *et al.*^[6] demonstrated that patients with occluded MCA and moyamoya vessels had a poor leptomeningeal collateral network. These findings suggest that patients with a poor collateral system cause significant cerebral perfusion impairment, and this may be involved in the origin of the moyamoya phenomenon. At present, various classification systems have

been reported for moyamoya disease (MMD) or moyamoya syndrome (MMS) associated with intracranial aneurysm in the literature. The possible link between atherosclerotic intracranial steno-occlusive disease and aneurysmal development could be inflammation and flow disturbances, well-known pathogenic factors involved in both diseases. For example, intracranial aneurysm can be divided into pseudoaneurysm, saccular (true) aneurysm, and dissecting aneurysm, according to the morphology and histology of the aneurysm.^[7,8] Alternatively, Kodama *et al.*^[9] provided the classification of aneurysms arising from the circle of Willis and those from the abnormal vessel network. In MMD, an intracranial aneurysm and pseudoaneurysm are frequently present in the main and collateral vessels, and the distal aneurysm is thought to be responsible for rebleeding.^[10-12] Aneurysms from the distal segments of the peripheral, cerebral arteries, or moyamoya vessels are pseudoaneurysms that come from dissection rupture or are a result of moyamoya vessel rupture. These aneurysms are formed due to increased stress on the vessel wall from the high flow imposed by occlusion of the anterior circulation.^[7-9,13] These aneurysms could produce parenchymal, subarachnoid, or intraventricular hemorrhage. Treatment strategies for intracranial aneurysms associated with moyamoya pattern collateral network include surgical clipping and endovascular embolization.^[14,15] Considerable dysplastic blood vessels and stiff arteries without needed plasticity can cause difficulty for the localization and exposure of aneurysms in direct surgery. Furthermore,

accurate localization of pseudoaneurysms from the distal segments of the peripheral cerebral arteries or moyamoya vessels is also challenging during surgical clipping procedures. For this reason, endovascular therapy is preferred, and different strategies can be used, such as coil or glue embolization and occlusion of the parent vessel.^[10,11] The approach of the microcatheter to distal collateral vessel is extremely difficult work due to complex vascular network. In these situations, the microcatheter often may not be able to provide enough support for coiling. Embolic materials such as NBCA can make the embolization of distal aneurysms much easier.

Conclusions

Moyamoya like collateral network can occur in MCA occlusion (preferably with hypoperfusion) and can be associated with intracranial aneurysms or pseudoaneurysms. These aneurysms can cause hemorrhagic presentations; therefore, endovascular treatment (aneurysm obliteration and/or parent artery occlusion) with NBCA can be good treatment option for in complex vascular anatomy state.

Financial support and sponsorship

Nil.

Conflicts of interest

There are no conflicts of interest

References

- Kinoshita Y, Kohshi K, Yokota A. Moyamoya disease of adult onset brain stem haemorrhage associated with bilateral occlusion of the vertebral arteries – Case report. *Acta Neurochir (Wien)* 1998;140:181-4.
- Edgell RC, Boulos AS, Borhani Haghighi A, Bernardini GL, Yavagal DR. Middle cerebral artery stenosis associated with moyamoya pattern collateralization. *Front Neurol* 2010;1:119.
- Fukawa O, Aihara H, Wakasa H. Middle cerebral artery occlusion with moyamoya phenomenon.-2nd report: Report of an autopsy case. *No Shinkei Geka* 1982;10:1303-10.
- Seki Y, Fujita M, Mizutani N, Kimura M, Suzuki Y. Spontaneous middle cerebral artery occlusion leading to moyamoya phenomenon and aneurysm formation on collateral arteries. *Surg Neurol* 2001;55:58-62.
- Kato H, Shimosegawa E, Oku N, Kimura Y, Kajimoto K, Tanaka M, *et al.* Cerebral hemodynamics and oxygen metabolism in patients with moyamoya syndrome associated with atherosclerotic steno-occlusive arterial lesions. *Cerebrovasc Dis* 2008;26:9-15.
- Tanaka M, Shimosegawa E, Kajimoto K, Kimura Y, Kato H, Oku N, *et al.* Chronic middle cerebral artery occlusion: A hemodynamic and metabolic study with positron-emission tomography. *AJNR Am J Neuroradiol* 2008;29:1841-6.
- Borota L, Marinkovic S, Bajic R, Kovacevic M. Intracranial aneurysms associated with moyamoya disease. *Neurol Med Chir (Tokyo)* 1996;36:860-4.
- Yamashita M, Tanaka K, Matsuo T, Yokoyama K, Fujii T, Sakamoto H, *et al.* Cerebral dissecting aneurysms in patients with moyamoya disease. Report of two cases. *J Neurosurg* 1983;58:120-5.
- Kodama N, Sato M, Sasaki T. Treatment of ruptured cerebral aneurysm in moyamoya disease. *Surg Neurol* 1996;46:62-6.
- Kim SH, Kwon OK, Jung CK, Kang HS, Oh CW, Han MH, *et al.* Endovascular treatment of ruptured aneurysms or pseudoaneurysms on the collateral vessels in patients with moyamoya disease. *Neurosurgery* 2009;65:1000-4.
- Yu JL, Wang HL, Xu K, Li Y, Luo Q. Endovascular treatment of intracranial aneurysms associated with moyamoya disease or moyamoya syndrome. *Interv Neuroradiol* 2010;16:240-8.
- Iwama T, Morimoto M, Hashimoto N, Goto Y, Todaka T, Sawada M, *et al.* Mechanism of intracranial rebleeding in moyamoya disease. *Clin Neurol Neurosurg* 1997;99 Suppl 2:S187-90.
- Nagata S, Matsushima T, Morioka T, Matsukado K, Mihara F, Sasaki T, *et al.* Unilaterally symptomatic moyamoya disease in children: Long-term follow-up of 20 patients. *Neurosurgery* 2006;59:830-6.
- Muizelaar JP. Early operation of ruptured basilar artery aneurysm associated with bilateral carotid occlusion (Moyamoya disease). *Clin Neurol Neurosurg* 1988;90:349-55.
- Massoud TF, Guglielmi G, Viñuela F, Duckwiler GR. Saccular aneurysms in moyamoya disease: Endovascular treatment using electrically detachable coils. *Surg Neurol* 1994;41:462-7.