

Images in Cardiovascular Medicine



The Use of New Emerging Technology in Echocardiography-Glass View

Faysal Alhasan, MD¹, Reza Arsanjani, MD², and Said Alsidawi , MD, FACC²



¹Department of Internal Medicine, University of Cincinnati College of Medicine, Cincinnati, OH, USA
²Department of Cardiovascular Diseases, Mayo Clinic School of Medicine, Scottsdale, AZ, USA

Received: Oct 7, 2021
Accepted: Oct 27, 2021
Published online: Nov 18, 2021

Correspondence to
Said Alsidawi, MD, FACC
Department of Cardiovascular Diseases, Mayo
Clinic School of Medicine, 13400, E. Shea Blvd.,
Scottsdale, AZ 85259, USA.
Email: Alsidawi.said@mayo.edu

There are many exciting new applications in echocardiography that are being introduced to help echocardiographer to better visualize myocardial tissue and establish accurate diagnosis. Recently, the glass view application was introduced by Philips (Andover, MA, USA) and has shown to provide excellent image quality for certain indications which helped with making the diagnosis or guiding procedures. We present few images (**Figure 1**) and videos (**Supplementary Videos 1-4**) that show some of the helpful applications of this new technology.

Consent obtained from patients to publish this work.

Copyright © 2022. The Korean Society of
Cardiology

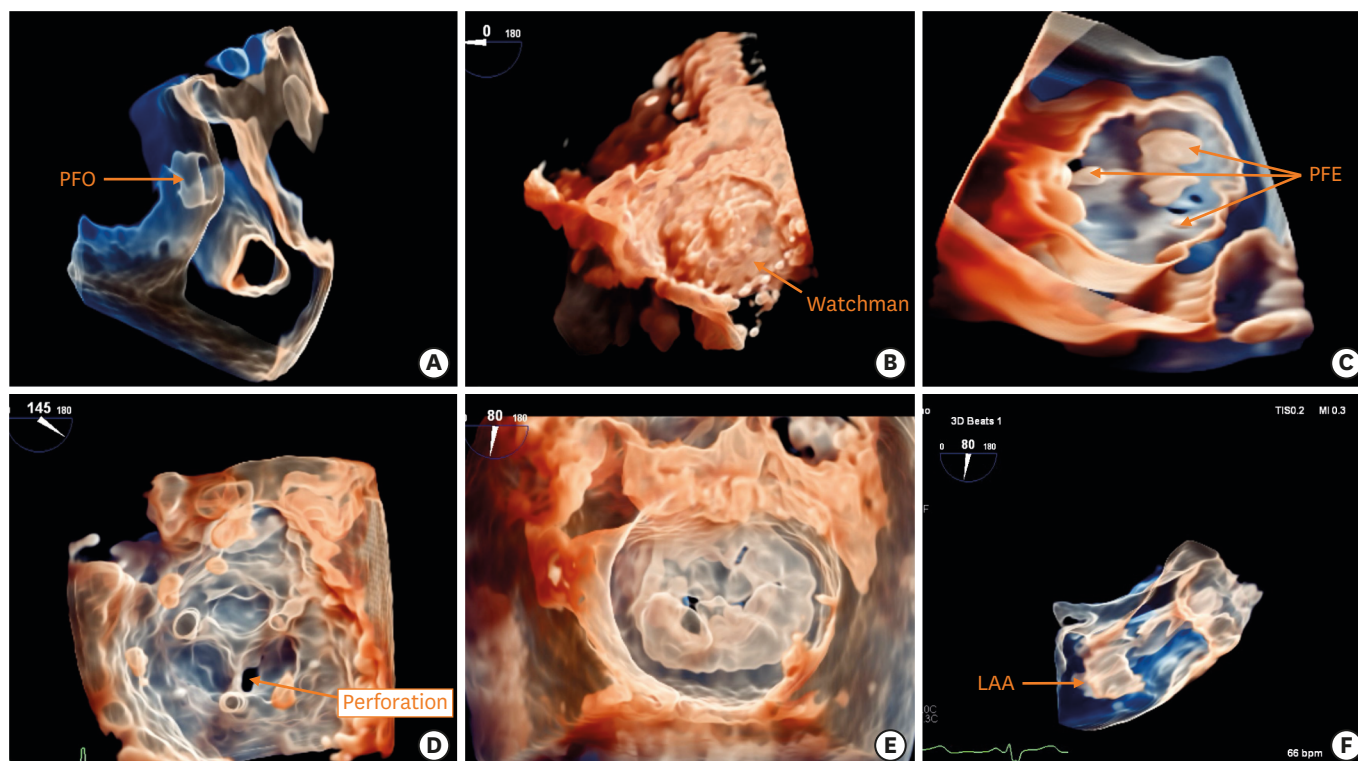


Figure 1. Examples of glass-view images. (A) Glass view showing a PFO. (B) Glass view showing a LAA occlusion device (Watchman). (C) Glass view showing multiple PFE on the aortic valve. (D) Glass view showing a small perforation of a tissue mitral valve prosthesis cusp. (E) Glass view showing a Barlow-type mitral valve prolapse with a flail P2 scallop. (F) Glass view of the side view showing a LAA anatomy after increasing transparency. LAA = left atrial appendage; PFE = papillary fibroelastomas; PFO = patent foramen ovale.

This is an Open Access article distributed under the terms of the Creative Commons Attribution Non-Commercial License (<https://creativecommons.org/licenses/by-nc/4.0>) which permits unrestricted noncommercial use, distribution, and reproduction in any medium, provided the original work is properly cited.

ORCID iDs

Said Alsidawi 
<https://orcid.org/0000-0001-8750-7880>

Funding

The authors received no financial support for the research, authorship, and/or publication of this article.

Conflict of Interest

The authors have no financial conflicts of interest.

Data Sharing Statement

The data generated in this study is available from the corresponding authors upon reasonable request.

Author Contributions

Conceptualization: Arsanjani R, Alsidawi S;
Software: Alsidawi S; Validation: Alhasan F;
Writing - original draft: Alsidawi S; Writing
- review & editing: Alhasan F, Arsanjani R,
Alsidawi S.

SUPPLEMENTARY MATERIALS

Supplementary Video 1

Glass view showing a patent foramen ovale.

[Click here to view](#)

Supplementary Video 2

Glass view showing a left atrial appendage occlusion device (Watchman).

[Click here to view](#)

Supplementary Video 3

Glass view showing multiple papillary fibroelastomas on the aortic valve.

[Click here to view](#)

Supplementary Video 4

Glass view showing a small perforation of a tissue mitral valve prosthesis cusp.

[Click here to view](#)