


ARTICLE

Ubiquitin chains earmark GPCRs for BBSome-mediated removal from cilia

Swapnil Rohidas Shinde, Andrew R. Nager, and Maxence V. Nachury 

Regulated trafficking of G protein-coupled receptors (GPCRs) controls cilium-based signaling pathways. β -Arrestin, a molecular sensor of activated GPCRs, and the BBSome, a complex of Bardet-Biedl syndrome (BBS) proteins, are required for the signal-dependent exit of ciliary GPCRs, but the functional interplay between β -arrestin and the BBSome remains elusive. Here we find that, upon activation, ciliary GPCRs become tagged with ubiquitin chains comprising K63 linkages (UbK63) in a β -arrestin-dependent manner before BBSome-mediated exit. Removal of ubiquitin acceptor residues from the somatostatin receptor 3 (SSTR3) and from the orphan GPCR GPR161 demonstrates that ubiquitination of ciliary GPCRs is required for their regulated exit from cilia. Furthermore, targeting a UbK63-specific deubiquitinase to cilia blocks the exit of GPR161, SSTR3, and Smoothed (SMO) from cilia. Finally, ubiquitinated proteins accumulate in cilia of mammalian photoreceptors and *Chlamydomonas* cells when BBSome function is compromised. We conclude that Ub chains mark GPCRs and other unwanted ciliary proteins for recognition by the ciliary exit machinery.

Introduction

The regulated trafficking of signaling receptors in and out of cilia is a central regulatory mechanism of many cilia-based signaling pathways (Nachury and Mick, 2019; Anvarian et al., 2019; Mykytyn and Askwith, 2017; Gigante and Casparly, 2020). For example, upon activation of the Hedgehog signaling pathway, the Hedgehog receptor Patched 1 and the G protein-coupled receptor (GPCR) GPR161 disappear from cilia, while the GPCR Smoothed (SMO) accumulates in cilia (Rohatgi et al., 2007; Corbit et al., 2005; Mukhopadhyay et al., 2013). In all three cases, regulated exit from cilia plays a major role in the on-demand redistribution of signaling molecules (Nachury and Mick, 2019). Signal-dependent exit is likely to be a general characteristic of ciliary GPCRs as the somatostatin receptor 3 (SSTR3), the dopamine receptor 1 (D1R), the melanocortin concentrating hormone receptor 1 (MCHR1), and the neuropeptide receptor 2 (NPY2R) all disappear from cilia upon exposure to agonist (Domire et al., 2011; Loktev and Jackson, 2013; Nager et al., 2017; Green et al., 2015). A major question is how GPCRs are selected for removal from cilia in an activity-dependent manner.

The major trafficking entities mediating signal-dependent exit from cilia are the BBSome and β -arrestin 2. The BBSome is an evolutionarily conserved complex of eight Bardet-Biedl syndrome (BBS) proteins that directly recognizes intracellular determinants in GPCRs and ferries them out of cilia (Nachury,

2018; Wingfield et al., 2018). The BBSome associates with the intraflagellar transport (IFT) machinery and has been proposed to act as adaptor between the motor-driven IFT trains and the membrane proteins that are to be removed from cilia. Because the BBSome is not known to have the ability to discriminate active from inactive GPCRs, there must exist another layer of regulation that commits activated GPCRs for exit. β -Arrestin 2 is a well-established molecular sensor of the activation state of GPCRs that is required for the signal-dependent exit of GPR161 and SSTR3 (Pal et al., 2016; Green et al., 2015; Nager et al., 2017). No association of β -arrestin 2 with ciliary trafficking complexes has been reported to date, and it remains unclear how β -arrestin 2 relays information regarding the state of activation of ciliary GPCRs to the ciliary exit machinery.

An emerging player in ciliary exit is ubiquitination (Shearer and Saunders, 2016). Ubiquitin (Ub), a 76-amino acid polypeptide, becomes conjugated to acceptor lysine residues on substrate proteins by Ub ligases and tags substrates for degradation or other regulatory fates (Yau and Rape, 2016; Swatek and Komander, 2016). A role for Ub in promoting ciliary exit is suggested by multiple lines of evidence. First, interfering with Patched1 ubiquitination blocks its signal-dependent exit from cilia (Kim et al., 2015; Yue et al., 2014). Second, fusing Ub to PKD-2, the olfactory receptor ODR-10, or the transient receptor potential channel OSM-9 at their cytoplasmic end results in the

Department of Ophthalmology, University of California, San Francisco, San Francisco, CA.

Correspondence to Maxence V. Nachury: maxence.nachury@ucsf.edu; A.R. Nager's present address is Cancer Immunology Discovery, Pfizer Inc., San Diego, CA.

© 2020 Shinde et al. This article is distributed under the terms of an Attribution-Noncommercial-Share Alike-No Mirror Sites license for the first six months after the publication date (see <http://www.rupress.org/terms/>). After six months it is available under a Creative Commons License (Attribution-Noncommercial-Share Alike 4.0 International license, as described at <https://creativecommons.org/licenses/by-nc-sa/4.0/>).

disappearance of these proteins from cilia (Hu et al., 2007; Xu et al., 2015). The accumulation of these Ub fusions inside cilia when BBSome function is compromised suggests that the BBSome might sort ubiquitinated signaling receptors out of cilia, in line with a reported association of BBSome with ubiquitinated proteins in trypanosomes (Langousis et al., 2016). Interestingly, TRIM32 is a Ub ligase mutated in BBS patients (Chiang et al., 2006). Third, the Ub ligase Cbl is recruited to cilia upon activation of the ciliary tyrosine kinase receptor platelet-derived growth factor receptor $\alpha\alpha$ (PDGFR $\alpha\alpha$), and Cbl is required for termination of PDGFR $\alpha\alpha$ signaling (Schmid et al., 2018). Last, a dramatic rise in ubiquitination of the ciliary proteome is observed when *Chlamydomonas reinhardtii* cilia disassemble (Huang et al., 2009). In particular, α -tubulin becomes ubiquitinated on K304 upon cilia disassembly, and expression of α -tubulin[K304R] slows down cilia disassembly (Wang et al., 2019).

After conjugation onto substrates, Ub itself often serves as a substrate for ubiquitination. The resulting Ub chains are characterized by the acceptor lysine residue on Ub with lysine 48-linked Ub (UbK48) chains targeting soluble proteins for proteasomal degradation, while lysine 63-linked Ub (UbK63) chains assembled onto membrane proteins constitute the major driver for sorting from the limiting membrane of late endosomes into intraluminal vesicles and ultimately lysosomal degradation (Piper et al., 2014; Yau and Rape, 2016; Swatek and Komander, 2016). Intriguingly, in shortening *C. reinhardtii* cilia, UbK63 linkages predominate at least fivefold over K48 linkages, and only UbK63 linkages are detected on α -tubulin. A role for UbK63 chains in ciliary trafficking remains to be determined.

Together, these data led us to investigate the interplay between ubiquitination, β -arrestin 2, and the ciliary exit machinery. Using a combination of cellular imaging, biochemical studies, and cilia-specific manipulations, we find that β -arrestin 2 directs the activation-dependent addition of Ub chains built at least in part with K63 linkages onto ciliary GPCRs that are then selected by the BBSome for removal from cilia.

Results

Signal-dependent ubiquitination of ciliary GPCRs is required for their regulated exit from cilia

As a first step in investigating the interplay between ubiquitination and the ciliary exit machinery, we sought to determine whether activation of ciliary GPCRs leads to their ubiquitination inside cilia before retrieval into the cell. We blocked BBSome-dependent exit by deleting its cognate GTPase ARL6/BBS3 in mouse inner medulla collecting duct (IMCD3) cells. IMCD3 cells represent a validated cell culture system to study ciliary trafficking, and the IMCD3 *Arl6*^{-/-} line has been previously characterized (Liew et al., 2014; Ye et al., 2018). As in previous studies (Ye et al., 2018; Nager et al., 2017), all GPCRs were expressed at near-endogenous levels by driving expression with extremely weak promoters. The fluorescent protein mNeonGreen (NG) fused to the cytoplasm-facing C terminus of GPCRs allowed direct visualization. A biotinylation acceptor peptide

(AP) fused to the extracellular N terminus biotinylated by an ER-localized biotin ligase (BirA-ER) enabled pulse labeling of surface-exposed molecules and denaturing purifications. When SSTR3 was expressed in *Arl6*^{-/-} IMCD3 cells, addition of its agonist somatostatin (sst) led to a drastic increase in the ciliary levels of Ub observed via immunostaining with the well-characterized FK2 (Fig. 1, A and B) and FK1 (Fig. S1, A and B) monoclonal antibodies (Fujimuro et al., 1994; Emmerich and Cohen, 2015; Haglund et al., 2003). All further experiments were conducted with the FK2 antibody. *Arl6*^{-/-} cells accumulated Ub signals inside cilia in the absence of SSTR3 expression (Fig. 1, A and B), demonstrating that some endogenous proteins become ubiquitinated inside the cilia of *Arl6*^{-/-} IMCD3 cells. No Ub signal was detected inside cilia when BBSome function was intact (Fig. 1, A and B; and Fig. S1, A–D), indicating that the BBSome efficiently removes ubiquitinated proteins from cilia. Because the sst-dependent increase in ciliary Ub signal depends upon SSTR3 expression (Fig. 1, A and B), these results suggest that either SSTR3 itself or a downstream effector of SSTR3 become ubiquitinated inside cilia upon activation.

To determine whether SSTR3 becomes ubiquitinated in response to sst, we biochemically isolated AP-SSTR3^{NG} under denaturing conditions via the biotinylated AP tag and probed for Ub via an HA tag on transfected HA-Ub. SSTR3 migrated as a broad band—as typical for a glycosylated protein—centered around 100 kD (Fig. 1 C). The amount of SSTR3 recovered did not change appreciably between WT and *Arl6*^{-/-} cells or upon stimulation with sst (Fig. 1 C). Remarkably, while only very faint Ub signals were detected associated with SSTR3 in WT cells, a Ub smear extending from 100 kD upward was detected in the SSTR3 pull-downs from *Arl6*^{-/-} cells. Furthermore, stimulation with sst resulted in a modest but reproducible increase in SSTR3 ubiquitination in *Arl6*^{-/-} cells (Fig. 1 D). We conclude that the BBSome/ARL6 system is required for the degradation of ubiquitinated SSTR3 and that SSTR3 becomes ubiquitinated in response to stimulation with sst.

We next sought to test whether signaling receptors endogenous to IMCD3 cells are ubiquitinated inside cilia in an activity-dependent manner. One signaling pathway that is natively expressed in IMCD3 cells is the Hedgehog pathway. Prior experiments have detected normal trafficking dynamics of SMO and GPR161 in IMCD3 cells (Ye et al., 2018; Mukhopadhyay et al., 2013; see Fig. 4 D). As GPR161 and SMO both accumulate in cilia of *Arl6*^{-/-} cells without hedgehog (Hh) pathway stimulation (Liew et al., 2014; Zhang et al., 2011), the Ub signal detected in *Arl6*^{-/-} cilia may correspond to Ub conjugated to SMO or GPR161. We detected a significant elevation of the ciliary Ub levels in *Arl6*^{-/-} cells when treated with the SMO agonist SAG (Fig. 1, E and F). Because SMO ubiquitination was previously shown to decrease upon its activation (Xia et al., 2012; Jiang et al., 2019), it is likely that the elevated ciliary Ub signal detected in SAG-treated cells is associated with GPR161. As activation of SMO triggers exit of GPR161 but this exit is frustrated when BBSome function goes awry, these data suggest that GPR161 becomes ubiquitinated before its BBSome-dependent exit. Collectively, these data suggest that GPCRs are ubiquitinated in a regulated fashion inside cilia and subsequently retrieved into the cell by the BBSome.

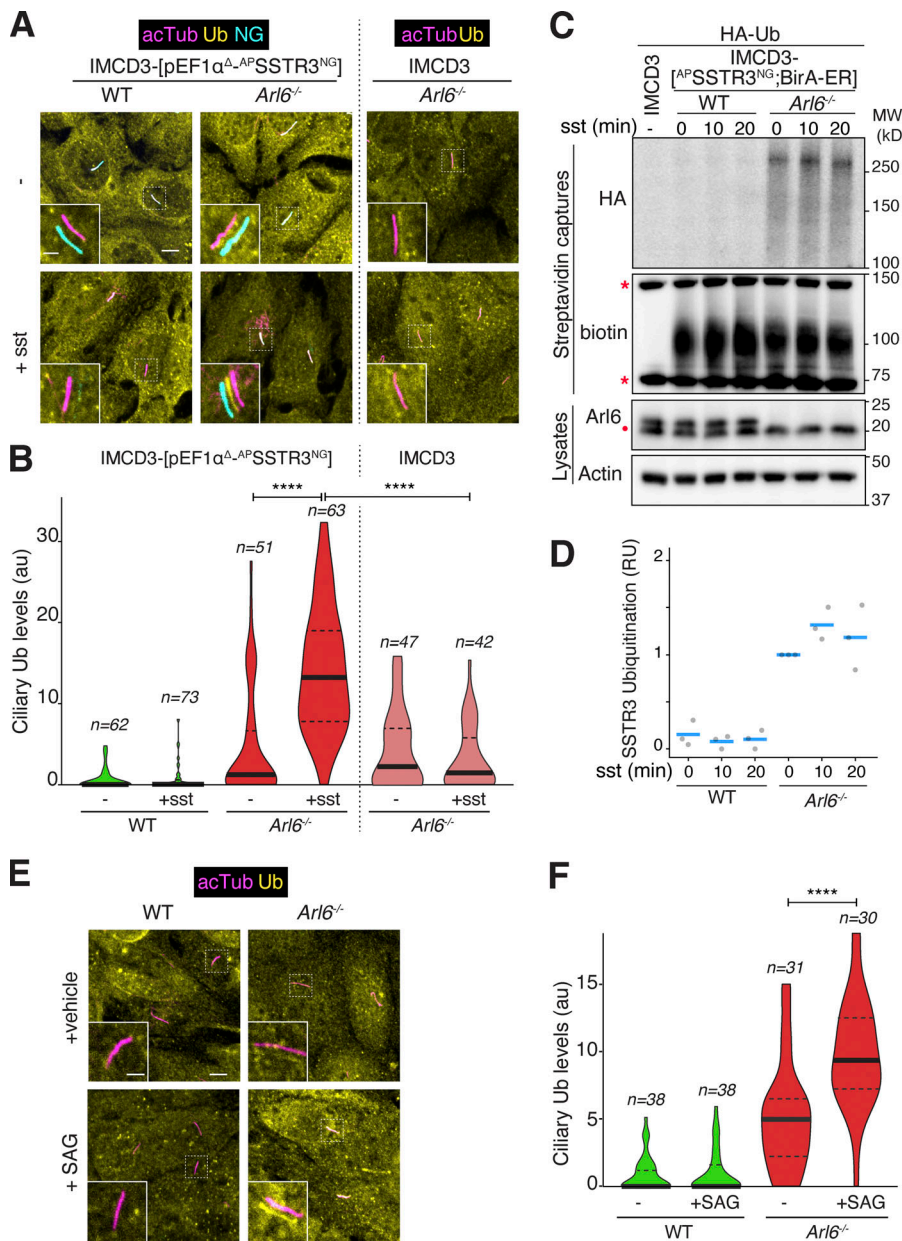


Figure 1. Ubiquitinated signaling receptors accumulate inside cilia of *Arl6*^{-/-} cells. (A) SSTR3 fused to the fluorescent protein NG at its intracellular C terminus and a biotinylation AP tag at its extracellular N terminus was expressed under the control of an attenuated EF1 α promoter (pEF1 Δ) in WT and *Arl6*^{-/-} IMCD3 cells. Cells were treated with or without sst-14 (sst) for 2 h, then fixed and stained for acetylated tubulin (acTub, magenta) and Ub (yellow). ^{AP}SSTR3^{NG} (cyan) was imaged through the intrinsic fluorescence of NG. Channels are shifted in the insets to facilitate visualization of overlapping ciliary signals. Scale bars, 5 μ m (main panel), 2 μ m (inset). In WT cells, the ciliary SSTR3 signal decreases over the experimental time course. In *Arl6*^{-/-} cells, SSTR3 fails to exit cilia, and an increase in the ciliary Ub level is detected. As a control, *Arl6*^{-/-} cells that did not express SSTR3-NG were tested; no increase in ciliary Ub levels was observed upon addition of sst. **(B)** The fluorescence intensity of the Ub channel in the cilium was measured in each condition, and the data are represented as violin plots. The thick bar indicates the median and the dotted lines the first and third quartiles. An 11-fold increase in ciliary Ub signal is observed upon addition of sst to SSTR3-expressing cells. Asterisks indicate ANOVA significance value. ****, $P \leq 0.0001$. **(C)** WT or *Arl6*^{-/-} IMCD3 cells stably expressing ^{AP}SSTR3^{NG} and the biotin ligase BirA targeted to the ER lumen (BirA-ER) were transiently transfected with HA-tagged Ub (HA-Ub). 10 μ M biotin was added to cells 24 h after transfection for maximal biotinylation of ^{AP}SSTR3^{NG} and, after another 18 h, cells were treated with sst (10 μ M) for indicated times. Cells were lysed under denaturing conditions, and biotinylated SSTR3 was captured on streptavidin resin. Eluates were probed for HA via immunoblotting and for biotin via streptavidin-HRP. Two major biotinylated proteins endogenous to cells are marked by asterisks. Whole cell lysates were probed for Arl6 and, as a loading control, actin. A nonspecific band cross-reacting with the anti-Arl6 antibody is marked with a dot. **(D)** Quantitation of SSTR3 ubiquitination. The signals of HA-Ub conjugated to SSTR3 in the

streptavidin eluates were measured. The experiment shown in C was repeated three times and for each experiment, Ub-SSTR3 signals were normalized to the value in *Arl6*^{-/-} cells at time = 0 of sst stimulation and plotted as gray circles. The horizontal blue lines represent mean values. **(E)** IMCD3 cells of the indicated genotypes were treated with the Smoothed agonist SAG or the vehicle DMSO for 2 h. Cells were then fixed and stained for acTub and Ub. Channels are shifted in the insets to facilitate visualization of overlapping ciliary signals. Scale bars, 5 μ m (main panel), 2 μ m (inset). Activation of Hh signaling promotes a detectable increase in ciliary Ub levels only in *Arl6*^{-/-} cells. **(F)** Violin plots of the fluorescence intensity of the Ub channel in the cilium in each condition are shown. Asterisks indicate ANOVA significance value. ****, $P \leq 0.0001$. au, arbitrary units; MW, molecular weight; RU, relative unit.

To test the functional importance of GPCR ubiquitination in BBSome-mediated exit from cilia, we removed all ubiquitination sites from SSTR3 and GPR161 by mutating all cytoplasm-exposed lysine residues to arginine (cKO variants). Exit kinetics were precisely monitored by real-time tracking of individual cilia in live cells. In both cases, the cKO variant underwent markedly slower signal-dependent exit from cilia than the WT allele (Fig. 2, A and B; and Fig. S2, A and B). Measurement of exit rates revealed that exit of SSTR3cKO was approximately twofold slower than SSTR3 and that exit of GPR161cKO was ~2.5-fold

slower than GPR161. The residual exit rates of the cKO mutants indicate the existence of alternative mechanisms of exit that complement GPCR ubiquitination or bypass BBSome-dependent retrieval (see Discussion).

To rule out that the observed ciliary exit defect of the cKO mutants was an indirect consequence of defective endocytosis, for example, because of clogging of the ciliary exit path, we directly assessed endocytosis of SSTR3 and SSTR3cKO. The surface-exposed pool of ^{AP}SSTR3 was pulse labeled with fluorescently labeled monovalent streptavidin (mSA), and cells were

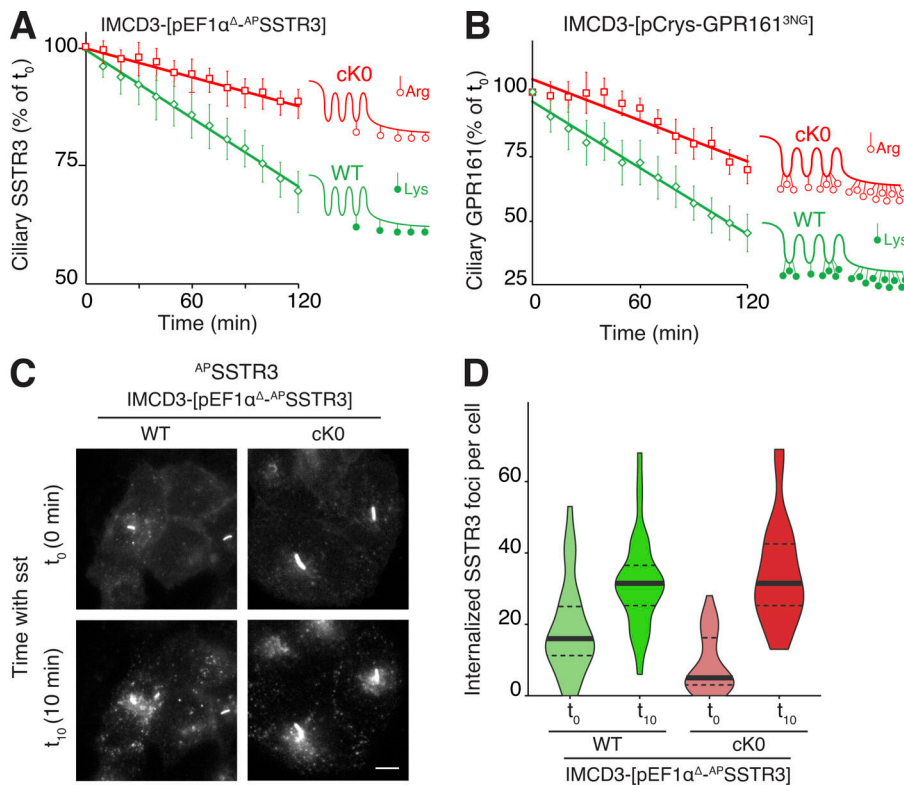


Figure 2. Ubiquitination of ciliary GPCRs is required for signal-dependent exit but not for endocytosis. (A) IMCD3-[pEF1 α^{Δ} -AP-SSTR3] cells stably expressed the BirA-ER to enable the biotinylation of AP-SSTR3. SSTR3 was either the WT allele or a variant where all five cytoplasm-facing lysine residues (listed in Materials and methods) were mutated to arginine (cKO). Ciliary AP-SSTR3 was pulse labeled by addition of Alexa Fluor 647-conjugated mSA (mSA647) to the medium for 5–10 min before addition of sst. Far red fluorescence was tracked in individual cilia at 10-min capture intervals. For each individual cilium, fluorescence intensities were normalized to the value at time (t) = 0. A comparison of the ciliary levels of SSTR3 at $t = 0$ is shown in Fig. S2 A. Data were plotted and fitted to a line. Error bars, 95% CI. $n = 18$ –22 cilia. **(B)** GPR161 fused to three tandem repeats of NG at its C terminus was expressed under the control of the ultra-weak pCrys in IMCD3 cells. GPR161 was either the WT allele or a variant where all 18 cytoplasm-facing lysine residues (listed in Materials and methods) were mutated to arginine (cKO). IMCD3-[pCrys-GPR161^{3NG}] cells were treated with SAG for 2 h. During the course of the experiment, NG fluorescence was tracked in individual cilia at 10-min capture intervals. Fluorescence data were acquired and analyzed as in A. A comparison of the ciliary levels of GPR161 at $t = 0$ is shown in Fig. S2 B. Error bars, 95% CI. $n =$

10–19 cilia. **(C)** IMCD3-[AP-SSTR3; BirA-ER] cells expressing either WT or cKO SSTR3 were pulse-labeled by addition of Alexa Fluor 647-conjugated mSA (mSA647) to the medium for 5 min before addition of sst and were imaged by far red fluorescence immediately after addition of sst (t_0) and 10 min later (t_{10}). The contrast level was adjusted to reveal plasma membrane-localized and internalized AP-SSTR3, causing the cilia-localized AP-SSTR3 signal to reach saturation. Scale bar, 5 μ m. **(D)** Internalized AP-SSTR3 foci were counted immediately after addition of sst (t_0) and 10 min later (t_{10}). $n = 34$ cells.

stimulated with sst. The faint hazy signal corresponding to the plasma membrane pool of SSTR3 disappeared after 10 min in the presence of sst in a similar fashion for both WT and cKO variants (Fig. 2 C). Concurrently, the WT and cKO variants appeared in cytoplasmic foci corresponding to endocytic vesicles (Fig. 2 C). Counting cytoplasmic foci revealed that endocytosis proceeded normally irrespective of the ubiquitination competence of SSTR3 (Fig. 2 D). SSTR3 thus behaves similarly to nearly every GPCR tested to date, in that it does not require ubiquitination for its signal-dependent internalization. Indeed, while ubiquitination of plasma membrane proteins is a major driver of internalization in yeast, ubiquitination of signaling receptors is generally dispensable for signal-dependent internalization in mammalian cells (Dores and Trejo, 2019; Piper et al., 2014; Skieterska et al., 2017).

These results strongly support a direct role for GPCR ubiquitination in promoting signal-dependent exit from cilia.

Ciliary UbK63 linkages are required for GPCR exit

We next sought to characterize the type of Ub conjugates that are attached to ciliary proteins. The FK1 and FK2 antibodies used in our immunofluorescent studies recognize Ub either as single adduct or in chain but not free Ub (Fujimuro et al., 1994; Emmerich and Cohen, 2015). The availability of antibodies specific for UbK48 and UbK63 linkages (Newton et al., 2008) enabled us to determine the types of Ub conjugates that are

attached to ciliary GPCRs. While we found no detectable signal for UbK48 in cilia, the signal for UbK63 linkages mirrored the ciliary response observed with the FK1 and FK2 antibody in IMCD3-[SSTR3] cells subjected to agonist treatment (Fig. 3, A and B; and Fig. S1, C and D). Given the high specificity and selectivity of the K48 and K63 linkage antibodies, these data strongly suggest that UbK63 chains are added onto SSTR3 inside cilia upon activation.

To confirm that K63 of Ub is the main linkage used for the elongation of Ub chains on SSTR3, we transfected variants of Ub with lysines mutated to arginines into *Arl6*^{-/-} cells stably expressing SSTR3. Signal-dependent ubiquitination of SSTR3 was abrogated when all seven lysines of Ub were mutated to arginines (Fig. 3, C and D). However, when K63 was the only lysine left intact on Ub, signal-dependent ubiquitination of SSTR3 was restored to the same extent as with WT Ub (Fig. 3, C and D). We conclude that the Ub chains assembled onto SSTR3 in response to SSTR3 activation inside cilia comprise K63 linkages. While UbK48 linkages were not detected inside cilia, it remains possible that mixed chains containing K63 linkages as well as other linkages besides K48 are assembled onto SSTR3 inside cilia.

To determine the functional importance of UbK63 linkages in tagging GPCRs for exit from cilia, we sought to specifically interfere with UbK63 linkages inside cilia (Fig. 4 A). Structural and biochemical studies have demonstrated that the deubiquitinase AMSH (associated molecule with the SH3 domain of STAM)

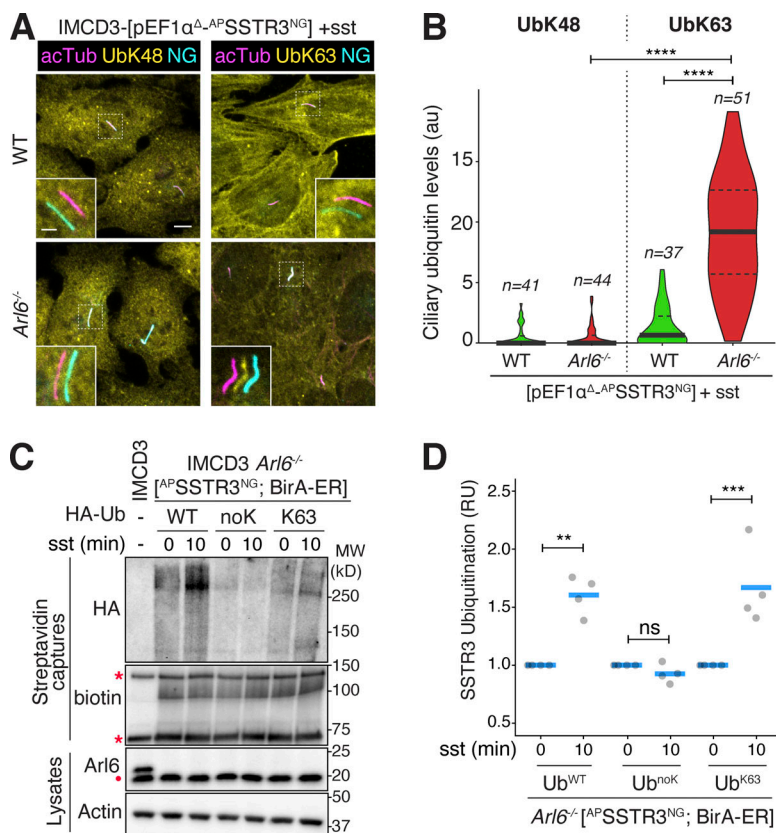


Figure 3. Signal-dependent accumulation of K63-linked Ub linkages inside cilia of Bbs mutant cells. (A) IMCD3 cells of the indicated genotypes expressing AP^{SSTR3}^{NG} were treated with sst-14 for 2 h. Cells were fixed and stained for acTub (magenta) and with antibodies specific for the lysine 63 (UbK63) or lysine 48 (UbK48) Ub chain linkages (yellow). SSTR3^{NG} (cyan) was imaged through the intrinsic fluorescence of NG. Channels are shifted in the insets to facilitate visualization of overlapping ciliary signals. Scale bar, 5 μm (main panel), 2 μm (inset). **(B)** The fluorescence intensities of the UbK48 and UbK63 channels in the cilium are represented as violin plots. A 14-fold increase in ciliary Ub abundance is detected with the UbK63 linkage-specific antibody. Asterisks indicate ANOVA significance value. ****, P ≤ 0.0001. No ciliary signal is detected with the UbK48 linkage-specific antibody. **(C)** Arl6^{-/-} IMCD3-[AP^{SSTR3}^{NG}; BirA-ER] cells were transfected with the HA-tagged Ub variants WT, noK (all seven acceptor lysine residues mutated to arginine), or K63 (where all lysine residues are mutated to arginine except for K63). Biotin was included in the culture medium, and cells were treated with sst for 0 or 10 min. Cells were lysed under denaturing conditions, and biotinylated SSTR3 was captured on streptavidin resin. Eluates were probed for HA via immunoblotting and for biotin via streptavidin-HRP. Two major biotinylated proteins endogenous to cells are marked by asterisks. Whole cell lysates were probed for Arl6 and, as a loading control, actin. A nonspecific band cross-reacting with the anti-Arl6 antibody is marked with a dot. WT IMCD3 cells were processed in parallel as a control. **(D)** Quantitation of SSTR3 ubiquitination. The signals of HA-Ub conjugated to SSTR3 in the streptavidin eluates were measured. The experiment shown in C was repeated four times, and for each Ub variant, Ub-SSTR3 signals were normalized to the value at t = 0 of sst stimulation and plotted as gray circles. The horizontal blue lines represent mean values. Asterisks indicate ANOVA significance value. ***, P ≤ 0.001; **, P ≤ 0.01. acTub, acetylated tubulin; ns, not significant, RU, relative unit.

possesses a near-absolute specificity for UbK63 linkages and does not cleave other Ub chain linkages or Ub-substrates linkages (Sato et al., 2008; McCullough et al., 2004). AMSH normally functions on the surface of late endosomes in concert with the endosomal sorting complex required for transport (ESCRT) protein STAM (McCullough et al., 2006). AMSH was previously fused to the epidermal growth factor receptor (EGFR) to demonstrate that UbK63 chains assembled on EGFR are dispensable for internalization but required for sorting into lysosomes (Huang et al., 2013). We targeted AMSH to cilia using the well-validated ciliary targeting signal from the ciliopathy protein NPHP3 (Nakata et al., 2012; Wright et al., 2011) and analyzed the exit of three distinct GPCRs: SMO, GPR161, and SSTR3. To alleviate concerns related to the interaction of AMSH with the STAM, we deleted the STAM-interacting domain of AMSH and only expressed the catalytic domain of AMSH. The signal-dependent exit of SSTR3 was assessed by treating IMCD3-[SSTR3] cells with sst for 2 h. In cells expressing cilia-AMSH (a fusion of NPHP3[1–200] to GFP and the catalytic domain of AMSH), sst no longer triggered a significant reduction in the ciliary levels of SSTR3 (Fig. 4, B and C). Care was taken to only analyze cells that expressed modest levels of cilia-AMSH as judged by GFP fluorescence (Fig. S3). In contrast, SSTR3 exit proceeded normally in cells that expressed NPHP3[1–200]-GFP alone or a catalytically dead variant of cilia-AMSH that we

named cilia-AMSH[†] (Fig. 4, B and C). These controls strongly suggest that cilia-AMSH exerts its effects on SSTR3 exit by cleaving UbK63 chains inside cilia, a conclusion borne out by imaging ciliary UbK63 in cells transfected with cilia-AMSH (Fig. S4). Similarly, the exit of endogenous GPR161 from retinal pigmented epithelium (RPE) cell cilia upon activation of the Hedgehog pathway was abolished in cells expressing moderate levels of cilia-AMSH (Fig. 4, D and E). Neither NPHP3[1–200]-GFP nor cilia-AMSH[†] blocked the signal-dependent exit of GPR161 from cilia (Fig. 4, D and E).

Unlike GPR161 and other ciliary GPCRs such as SSTR3 that are removed from cilia by the BBSome only when they become activated, SMO undergoes constitutive BBSome-dependent exit from cilia in the absence of Hedgehog pathway stimulation (Nachury, 2018; Ye et al., 2018; Ocbina and Anderson, 2008; Zhang et al., 2011). Signal-dependent accumulation of SMO in cilia is achieved, at least in part, by suppression of its exit (Milenkovic et al., 2015; Nachury and Mick, 2019; Ye et al., 2018). In cells expressing cilia-AMSH, endogenous SMO spontaneously accumulated inside cilia in the absence of Hedgehog pathway activation (Fig. 4, F and G). Again, neither NPHP3[1–200]-GFP nor cilia-AMSH[†] influenced the ciliary accumulation of SMO (Fig. 4, F and G).

Together, these results indicate that K63-linked Ub chains inside cilia, presumably built onto each ciliary GPCR under a

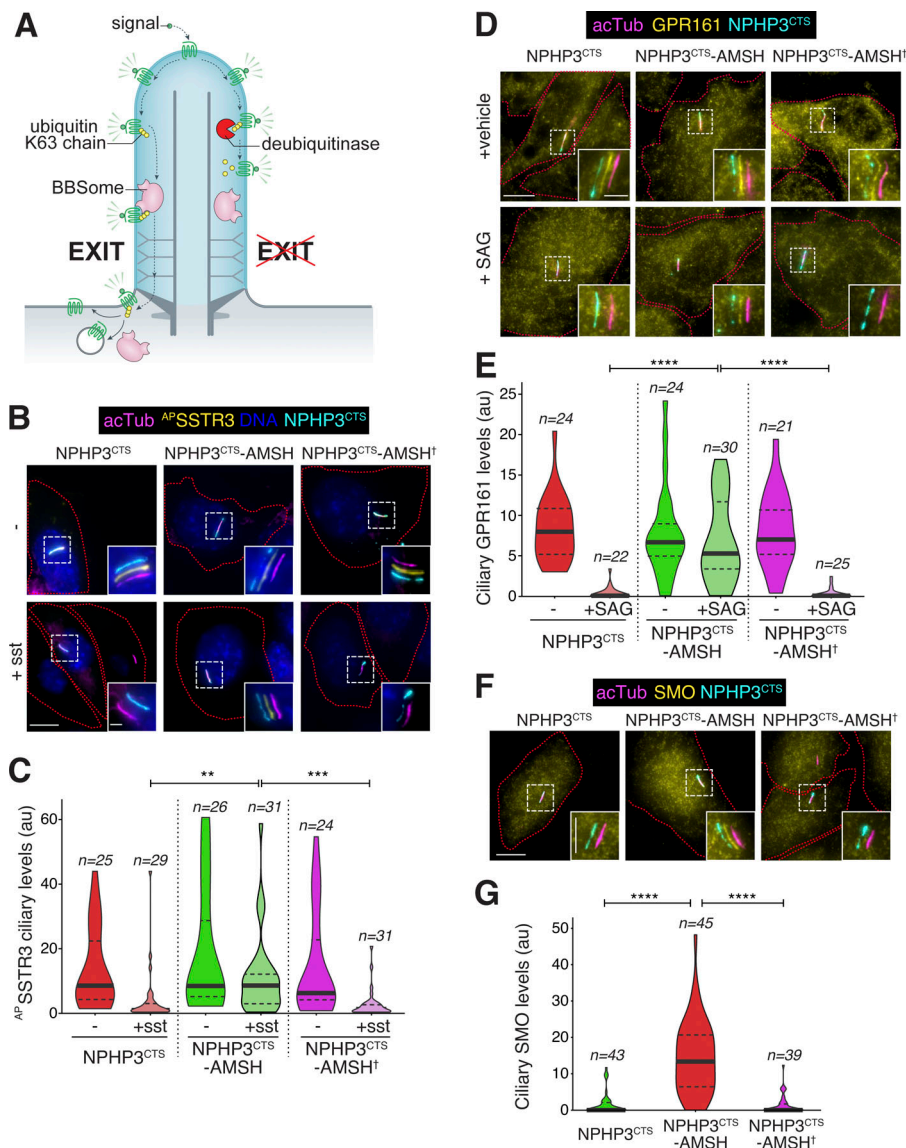


Figure 4. Ciliary UbK63 linkages are required for GPCR exit from cilia. (A) Diagram of the working model and the experimental strategy. (B) IMCD3-[pEF1α^A-APSSSTR3; pEF1α-BirA^E-ER] were transfected with plasmids expressing the ciliary targeting signal (CTS) of NPHP3 fused to GFP only (left), to GFP and the catalytic domain of the K63-specific deubiquitinase AMSH (middle), or to GFP and the catalytically inactive E280A variant of AMSH catalytic domain (AMSH^E; right). Ciliary APSSSTR3 was pulse-labeled with mSA647 for 5–10 min, and cells were then treated with or without sst for 2 h, before fixation and staining for acetylated tubulin (acTub; magenta) and DNA (blue). The NPHP3^{CTS} fusions were visualized through the intrinsic fluorescence of GFP (cyan) and APSSSTR3 was visualized via mSA647 (yellow). Channels are shifted in the insets to facilitate visualization of overlapping ciliary signals. Scale bars, 5 μm (main panel), 2 μm (inset). (C) The fluorescence intensities of ciliary mSA647-APSSSTR3 are represented as violin plots. Asterisks indicate Kruskal–Wallis test significance values. ***, P ≤ 0.001; **, P ≤ 0.01. Addition of sst triggers the exit of SSTR3 from cilia in cells transfected with the controls NPHP3^{CTS} and NPHP3^{CTS}-AMSH^E, but NPHP3^{CTS}-AMSH blocks ciliary exit of SSTR3. (D) RPE1-hTERT (RPE) cells transfected with the indicated constructs were treated with SAG or vehicle (DMSO) for 2 h and then fixed and stained for acetylated tubulin (magenta) and GPR161 (yellow). The NPHP3^{CTS} fusions were visualized through the intrinsic fluorescence of GFP (cyan). Channels are shifted in the insets to facilitate visualization of overlapping ciliary signals. Scale bars, 5 μm (main panel), 2 μm (inset). (E) The fluorescence intensities of ciliary GPR161 are represented as violin plots. Asterisks indicate ANOVA significance value. ****, P ≤ 0.0001. NPHP3^{CTS}-AMSH specifically blocks the SAG-dependent exit of GPR161 from cilia. (F) IMCD3 cells transfected with the indicated constructs were fixed and stained for

acetylated tubulin (magenta) and SMO (yellow). The NPHP3^{CTS} fusions were visualized through the intrinsic fluorescence of GFP (cyan). Channels are shifted in the insets to facilitate visualization of overlapping ciliary signals. (G) The fluorescence intensities of ciliary SMO are represented as violin plots. Asterisks indicate ANOVA significance value. ****, P ≤ 0.0001. NPHP3^{CTS}-AMSH specifically blocks the constitutive exit of SMO from cilia and promotes accumulation of SMO in cilia in the absence of pathway activation.

specific signaling stimulus, are required for GPCR removal from cilia.

β-Arrestin 2 mediates signal-dependent ubiquitination of ciliary GPCRs

As β-arrestin 2 is required for signal-dependent exit of GPR161 and SSTR3 from cilia (Green et al., 2015; Pal et al., 2016; Ye et al., 2018), we sought to determine the functional relationship between β-arrestin 2 and the BBSome. As previously described (Green et al., 2015), β-arrestin 2 is initially undetectable inside cilia and becomes recruited to cilia within minutes of SSTR3 agonist addition (Fig. 5, A–C). The ciliary β-arrestin 2 signal reaches a plateau after ~10 min, and the t_{1/2} for ciliary accumulation is <5 min (Fig. 5 C). Meanwhile, the t_{1/2} for BBSome recruitment to the tip of cilia was 10 min, and the first signs of

detectable SSTR3 exit were seen between 10 and 15 min (Fig. 5 C). These kinetics suggested that β-arrestin 2 is first recruited to activated ciliary SSTR3 before the BBSome ferries activated SSTR3 out of cilia. When ARL6 was depleted, the basal levels of ciliary β-arrestin 2 were elevated but the kinetics of β-arrestin 2 accumulation in cilia upon SSTR3 activation were indistinguishable from control-depleted cells (Fig. 5, A and B). These data suggest that a small fraction of SSTR3 that is tonically active fails to exit cilia in ARL6-depleted cells and recruits β-arrestin 2. From these data, we conclude that β-arrestin 2 functions either upstream of, or in parallel with, the BBSome in signal-dependent retrieval of GPCRs. Similarly, the kinetics of GPR161 exit and β-arrestin 2 ciliary recruitment upon activation of the Hh pathway indicated that β-arrestin 2 reaches its maximal ciliary level before the first signs of GPR161 exit become evident (Fig. 5 D).

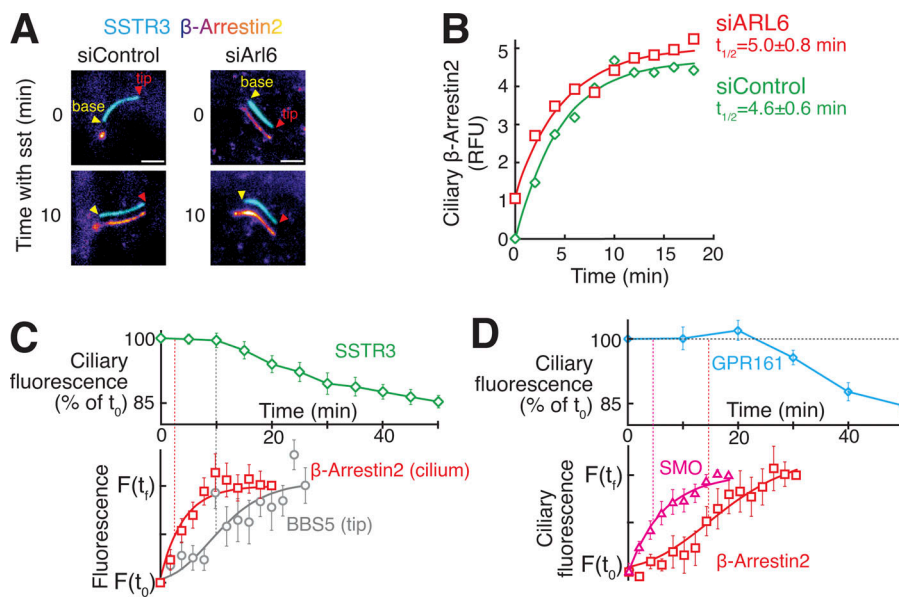


Figure 5. β -Arrestin 2 is recruited to cilia upon activation of SSTR3 or GPR161. (A) β -Arrestin 2 is rapidly recruited to cilia upon activation of SSTR3. siRNA-treated IMCD3-[AP SSTR3, β -arrestin2 GFP] cells were pulse-labeled with mSA647 before addition of sst. Channels are shifted to facilitate visualization of overlapping ciliary signals. As shown previously (Shankar et al., 2010), β -arrestin 2 is at the basal body in unstimulated cells. Scale bar, 2 μ m. (B) Kinetics of β -arrestin 2 GFP recruitment to cilia upon sst stimulation in control- and ARL6-depleted IMCD3-[AP SSTR3, β -arrestin2 GFP] cells. Data were fit to a simple exponential. $n = 10$ cilia. (C and D) Kinetics of early trafficking events for retrieval of SSTR3 (C) and GPR161 (D). Top: Removal of stably expressed AP SSTR3 NG or AP GPR161 NG3 following addition of sst (C) or SAG (D). Bottom: The kinetics of β -arrestin 2 GFP entry (C and D), AP Smoothed NG entry (D), and NG3 BBS5 tip accumulation (C) measured in IMCD3 cells stably expressing the indicated proteins. Fluorescence values are normalized to the initial (t_0) and final (t_f) values. Error bars, SEM. $n = 6$ –11 cilia. RFU, relative fluorescence unit; si, small interfering; t, time.

We previously proposed that β -arrestin 2 may bridge activated GPCRs to the BBSome (Ye et al., 2018; Nachury, 2018). Yet we have thus far failed to detect a biochemical interaction between β -arrestin 2 and the BBSome. Furthermore, the continuous distribution patterns of β -arrestin 2 and SSTR3 inside cilia are similar to one another and distinct from the discontinuous pattern of the BBSome (Fig. 5 A), arguing against a direct association of β -arrestin 2 with BBSome/IFT trains inside cilia. We considered the alternative hypothesis that β -arrestin 2 functions upstream of the BBSome. Given that β -arrestin 2 functions in the signal-dependent targeting of GPCRs from the plasma membrane to the lysosome by recruiting Ub ligases to activated GPCRs (Henry et al., 2012; Bhandari et al., 2007; Shenoy et al., 2008; Martin et al., 2003), we posited that β -arrestin 2 recognizes activated GPCRs inside cilia to direct their ubiquitination and subsequent selection by the BBSome for removal from cilia. A central prediction of this model is that β -arrestin 2 is required for the ubiquitination of ciliary GPCRs in response to stimulation. To test this prediction, we deleted the β -arrestin 2 gene *Arb2* in *Arl6* knockout IMCD3 cells (Nager et al., 2017). While the signal-dependent exit of SSTR3 from cilia failed in both *Arl6* $^{-/-}$ and *Arl6* $^{-/-}$ *Arb2* $^{-/-}$ cells (Fig. 1, A and B; and Fig. 6, A and B), Ub staining in cilia and by inference signal-dependent ubiquitination of SSTR3 was only observed in *Arl6* $^{-/-}$ cells (Fig. 6, A and B). In *Arl6* $^{-/-}$ *Arb2* $^{-/-}$ cells, the signal-dependent increase in ciliary Ub signal was no longer observed (Fig. 6, A and B). Similarly, the increase in ciliary Ub signal seen in *Arl6* $^{-/-}$ cells treated with the Hedgehog pathway agonist SAG was no longer observed in the absence of β -arrestin 2 (Fig. 6, C and D). These data indicate that, in the absence of BBSome function, ciliary GPCRs become ubiquitinated in response to activation in a β -arrestin 2-dependent manner. We sought to confirm our imaging-based finding with a biochemical analysis of SSTR3 ubiquitination.

While SSTR3 ubiquitination was readily detected in *Arl6* $^{-/-}$ cells and measurably increased upon stimulation with sst, the deletion of β -arrestin 2 in *Arl6* $^{-/-}$ cells drastically reduced SSTR3 ubiquitination levels, and no sst-dependent increase of SSTR3 ubiquitination was detected in *Arl6* $^{-/-}$ /*Arb2* $^{-/-}$ cells (Fig. 6, E and F).

Together, these data suggest the following order of action: GPCR activation, β -arrestin 2 engagement, Ub ligase recruitment, assembly of UbK63 chains on the GPCR, and finally selection of ubiquitinated GPCRs for BBSome-mediated retrieval (Fig. 7 E).

Constitutively retrieved BBSome cargoes are ubiquitinated before exit

Besides removing GPCRs from cilia in a regulated fashion, the BBSome also clears cilia of unwanted proteins that accidentally enter cilia. In the single-cell flagellated organism *C. reinhardtii*, mutations in the BBSome subunit *Bbs4* cause a constitutive accumulation of several proteins including phospholipase D in cilia (Lehtreck et al., 2009). When stained for Ub, *Bbs4* *C. reinhardtii* showed a twofold enrichment in ciliary signal compared with WT (Fig. 7, A and B). Isolation of cilia revealed the accumulation of Ub conjugates above 80 kD in *Bbs4* mutant *C. reinhardtii* cilia (Fig. 7 C). These results are consistent with the hypothesis that ciliary proteins subject to constitutive retrieval are ubiquitinated before their removal from cilia by the BBSome.

In the mammalian retina, proteomics studies have found >100 proteins accumulating in the outer segment (the equivalent of the cilium) of *Bbs* photoreceptors compared with WT photoreceptors (Datta et al., 2015). When we stained sections of mouse retina for Ub, we found a drastic accumulation of Ub signal in the outer segment of *Bbs4* $^{-/-}$ photoreceptors compared with WT photoreceptors (Fig. 7 D). We note that the nature of Ub

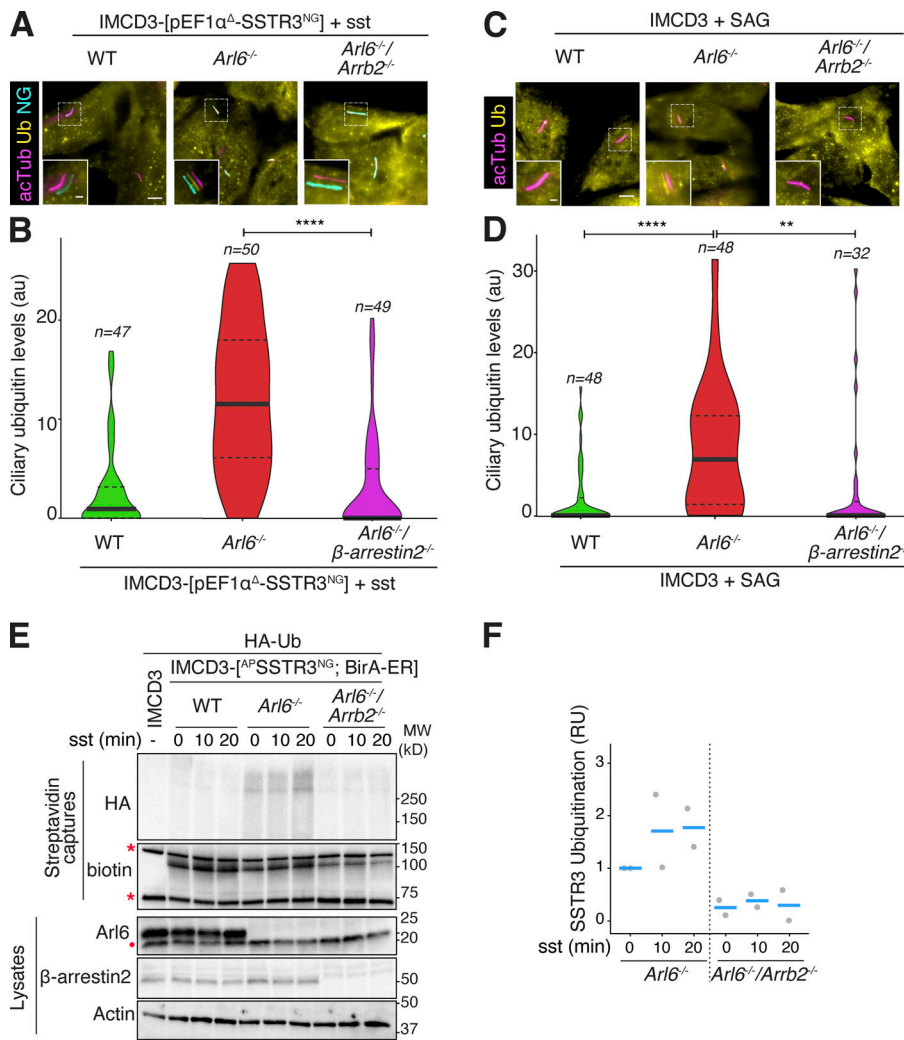


Figure 6. β -Arrestin 2 directs the signal-dependent ubiquitination of ciliary GPCRs. (A) IMCD3-[pEF1 α^{Δ} -APSSSTR3^{NG}] cells of the indicated genotypes were treated with sst for 2 h before fixation and staining for acetylated tubulin (acTub, magenta) and Ub (yellow). SSTR3^{NG} was visualized through the intrinsic fluorescence of NG (cyan). Channels are shifted in the insets to facilitate visualization of overlapping ciliary signals. SSTR3 exit is blocked in *Arl6*^{-/-} cells regardless of the β -Arrestin 2 genotype, but the ciliary Ub signal is only evident when β -arrestin 2 function is intact. Scale bar, 5 μ m (main panel), 1 μ m (inset). (B) Violin plots representing the ciliary levels of Ub under the indicated conditions. Asterisks indicate ANOVA significance value. ****, $P \leq 0.0001$. (C) IMCD3 WT, knockout for *Arl6* only and double knockout for *Arl6* and the β -arrestin 2 gene *Arrb2* were treated with SAG for 2 h before fixation and staining for acetylated tubulin (acTub, magenta) and Ub (yellow). Channels are shifted in the insets to facilitate visualization of overlapping ciliary signals. Scale bars, 5 μ m (main panel), 1 μ m (inset). (D) Violin plots representing the ciliary Ub levels. Asterisks indicate ANOVA significance value. ****, $P \leq 0.0001$; **, $P \leq 0.01$. The appearance of a Ub signal in cilia in *Arl6*^{-/-} cells depends on β -arrestin 2. (E) IMCD3-[^{AP}SSTR3^{NG}; BirA-ER] cells of the indicated genotypes stably expressing ^{AP}SSTR3^{NG} and BirA-ER were transfected with HA-Ub, biotin was added to the medium, and cells were treated with sst for indicated times. Biotinylated SSTR3 was captured from cell lysates under denaturing conditions on streptavidin resin. Eluates were probed for HA via immunoblotting and for biotin via streptavidin-HRP. Two major biotinylated proteins endogenous to cells are marked by asterisks. Whole cell lysates were probed for *Arl6*, β -arrestin 2 to verify genotypes, and as a loading control, actin. A nonspecific band cross-reacting with the anti-*Arl6* antibody is marked with a dot. WT IMCD3 cells were processed in parallel as a control. (F) Quantitation of SSTR3 ubiquitination. The signals of HA-Ub conjugated to SSTR3 in the streptavidin eluates were measured. The experiment shown in E was repeated twice and for each experiment, Ub-SSTR3 signals were normalized to the value in *Arl6*^{-/-} cells at time = 0 of sst stimulation and plotted as gray circles. The horizontal blue lines represent mean values. $n = 2$. RU, relative unit.

conjugates remains to be determined in the case of constitutive cargoes. These results suggest that a variety of proteins that accidentally flow into the photoreceptors outer segments, possibly caught on the tremendous flux of rhodopsin trafficking to the outer segment (Baker et al., 2008), are recognized as foreign to the cilium, ubiquitinated on site, and selected for removal by the BBSome (Fig. 7 E).

Discussion
Recognition of Ub chains by the ciliary exit machinery
 Our results indicate that Ub chains built at least in part with K63 linkages mark activated GPCRs and likely other unwanted proteins for BBSome-mediated removal from cilia. Prior findings in trypanosomes suggest that the BBSome may directly recognize Ub (Langousis et al., 2016), although direct biochemical evidence and information regarding Ub chain specificity is still missing. It is also known that the BBSome directly recognizes cytoplasmic determinants in the GPCRs it ferries out of cilia (Jin et al., 2010;

Klink et al., 2017; Ye et al., 2018; Seo et al., 2011; Domire et al., 2011). We propose that the summation of weak molecular interactions between the BBSome and Ub chains on the one hand and the BBSome and GPCRs cytoplasmic loops on the other hand increases the BBSome-cargo interaction to enable sorting of ubiquitinated GPCRs out of cilia. In support of this bivalent recognition of ubiquitinated cargoes by the BBSome, the affinity of the BBSome for cytoplasmic determinants on GPCRs is in the micromolar range (Klink et al., 2017), and affinities of Ub-binding proteins for Ub typically reside in the sub-millimolar range (Husnjak and Dikic, 2012). The nature of the biochemical entity that directly recognizes Ub, and in particular UbK63 linkages, remains to be determined: while the BBSome was pulled down on Ub-agarose resin from trypanosome lysates (Langousis et al., 2016), no known Ub-binding domain is found in the BBSome polypeptides. Furthermore, the IFT-A subunit IFT-139 associates with ubiquitinated α -tubulin in ciliary extracts from *C. reinhardtii*, suggesting a possible recognition of Ub by IFT139 (Wang et al., 2019). Again, the absence of a known

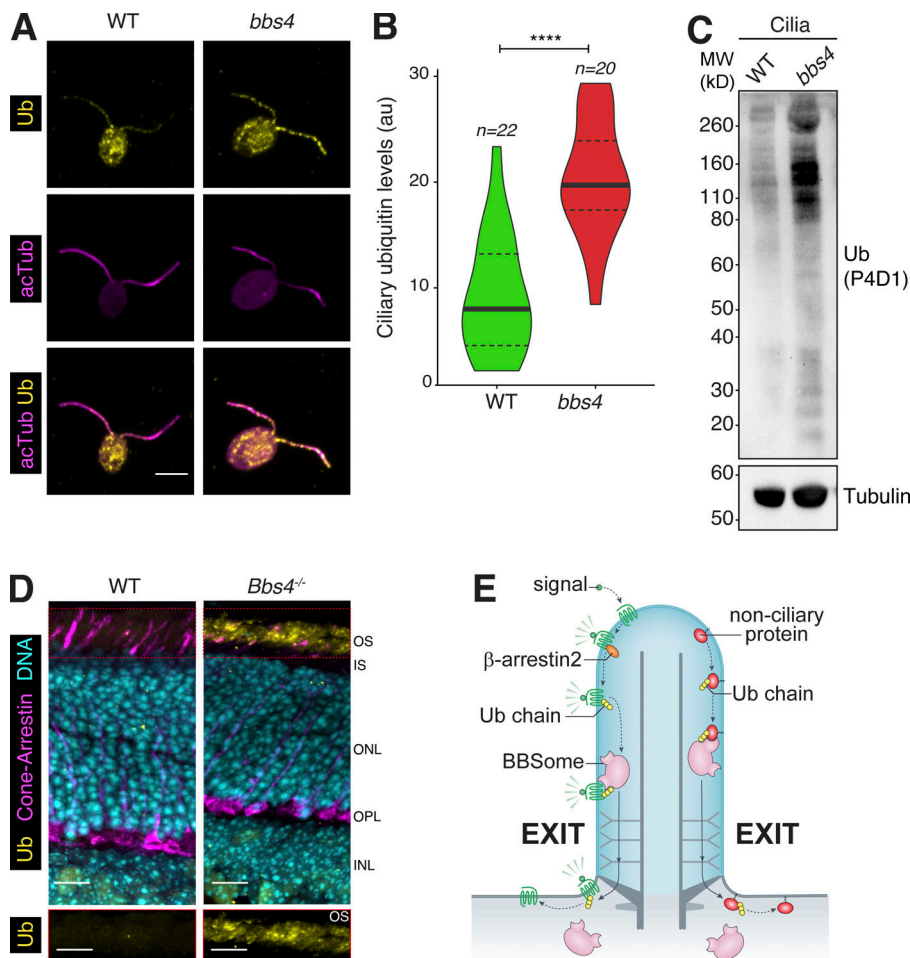


Figure 7. Accumulation of ubiquitinated proteins in cilia of *C. reinhardtii* cells and mammalian photoreceptors. (A) *C. reinhardtii* cells of the indicated genotypes were fixed and stained for acetylated tubulin (acTub, magenta) and Ub (yellow). Scale bar, 5 μ m. A weak Ub signal detected in WT cells is increased in *bbs4* mutant cells. (B) Violin plots of the ciliary Ub levels in WT and *bbs4* *C. reinhardtii* cells. Asterisks indicate Mann–Whitney test significance values. ****, $P \leq 0.0001$. The ciliary levels of Ub are increased more than twofold in *bbs4* cells as compared with WT. (C) Cilia purified from WT and *bbs4* cells via deciliation with dibucaine and differential centrifugation were solubilized, and the protein contents resolved by SDS-PAGE. Immunoblots for Ub (using the P4D1 antibody) and tubulin are shown. A rise in Ub conjugates is observed in *bbs4* *C. reinhardtii* cells compared with WT. (D) Mouse retinas were fixed, embedded, and sectioned before staining for Ub (yellow, lower panel), cone arrestin (magenta, a marker of the photoreceptor outer segment layer), and DNA (cyan). OS, outer segment; IS, inner segment; ONL, outer nuclear layer; OPL, outer plexiform layer; INL, inner nuclear layer. Scale bar, 10 μ m. (E) Model for the role of Ub chains in selecting cargoes for signal-dependent and constitutive exit via BBSome-mediated transport.

Ub-binding domain in the sequence of IFT139 presents a challenge to this hypothesis.

Requirements for UbK63 linkages in ciliary exit and sorting to the lysosome

Wang et al. (2019) found that α -tubulin is modified by UbK63 chains and not UbK48 chains upon ciliary disassembly. The Ub ligases that have been associated with ciliary clearance of Patched 1 and of PDGFR α specifically assemble UbK63 chains (Kim et al., 2015; Yue et al., 2014; Schmid et al., 2018). The suppression of GPR161, SSTR3, and SMO exit by cilia-AMSH (Fig. 4) demonstrates that UbK63 chains are recognized inside cilia to direct trafficking out of cilia. The milder exit defect observed when acceptor lysines are mutated on ciliary GPCRs (Fig. 2) than when cilia-AMSH is expressed (Fig. 4) suggests that UbK63 linkages added onto other ciliary proteins besides GPCRs may participate in ciliary exit. A role for ubiquitination of the ciliary transport machinery in exit is in line with the functional importance of ubiquitination of the endolysosomal machinery in GPCR trafficking (Dores and Trejo, 2019). β -Arrestin ubiquitination promotes internalization of the β_2 -adrenergic receptor (β_2 AR; Shenoy et al., 2001, 2007; Shenoy and Lefkowitz, 2003), ubiquitination of the ESCRT components Hrs and STAM participates in sorting of the chemokine receptor CXCR4 into the multivesicular body (MVB; Malik and Marchese, 2010;

Marchese et al., 2003), and ubiquitination of the ESCRT-III recruitment factor ALIX enhances MVB sorting of the protease-activated receptor 1 (Dores et al., 2015).

The requirement for UbK63 chains in signal-dependent exit from the cilium contrasts with the more limited role of Ub and UbK63 chains in signal-dependent endocytosis of signaling receptors at the plasma membrane in mammals. Although ubiquitination is a major driver of endocytosis in yeast (Stringer and Piper, 2011; Piper et al., 2014), foundational studies on EGFR trafficking found that signal-dependent receptor ubiquitination is not essential for internalization because it is redundant with other internalization mechanisms (Goh et al., 2010; Huang et al., 2013; Fortian et al., 2015). Studies of an EGFR-AMSH fusion found that UbK63 chains attached onto EGFR become increasingly necessary as EGFR progresses along the degradative route, and a strict requirement for K63-linked Ub chains is observed at the terminal step of EGFR sorting into the lumen of MVB (Huang et al., 2013). A strict requirement for receptor ubiquitination in degradative sorting but not in internalization can be generalized to nearly all GPCRs (Skieterska et al., 2017), namely β_2 AR (Shenoy et al., 2001), CXCR4 (Marchese and Benovic, 2001), μ opioid receptor (Hislop et al., 2011), κ opioid receptor (Li et al., 2008), δ opioid receptor (Henry et al., 2011), neurokinin-1 receptor (Cottrell et al., 2006), protease-activated receptor 2 (Jacob et al., 2005), and vasopressin receptor 2 (Martin et al., 2003).

Similarly, we find that SSTR3 endocytosis proceeds normally in the absence of SSTR3 ubiquitination (Fig. 2, C and D). Studying the importance of UbK63 linkages in mammalian cells via genetics remains challenging because of the multiple genes encoding Ub, but in yeast strains expressing UbK63R as the sole source of Ub, the Gap1 permease is internalized normally and yet fails to get sorted into the MVB (Lauwers et al., 2009).

The parallels between sorting at the late endosome and ciliary trafficking extend to β -arrestin-directed ubiquitination. While β -arrestin functions inside cilia to direct the addition of Ub onto activated SSTR3 and GPR161 (Fig. 5 and Fig. 6), β -arrestin-mediated ubiquitination selectively affects sorting at the level of endosomes rather than at the plasma membrane for activated CXCR4 (Bhandari et al., 2007), β_2 AR (Shenoy et al., 2008), and vasopressin receptor 2 (Martin et al., 2003), and β -arrestin-mediated ubiquitination of CXCR4 was shown to take place on endosomes (Malik and Marchese, 2010). In this context, the recognition of K63-linked Ub chain inside cilia may benefit the endosomal origin of primary cilia (Sorokin, 1962; Westlake et al., 2011; Mitchell, 2017).

The parallels between endosomal and ciliary trafficking lead us to speculate that some ubiquitinated proteins might be accidentally sorted to cilia instead of late endosomes. These proteins would then need to be retrieved from cilia by the BBSome. Thus, the Ub signal detected in photoreceptor outer segment and in *C. reinhardtii* flagella might result from the accidental import of ubiquitinated proteins into cilia rather than in situ ubiquitination of unwanted proteins inside cilia.

Potential coupling between BBSome-mediated exit and degradative sorting

An interesting consideration is the relationship between ciliary exit and endolysosomal sorting. It has been proposed that endocytosis of signaling receptors is intimately coupled to their exit from cilia (Pedersen et al., 2016). However, single molecule imaging of GPR161 exiting cilia suggests that activated GPR161 diffuses into the plasma membrane after it exits from the ciliary compartment (Ye et al., 2018). Prior findings that worm mutants for BBSome or the ESCRT machinery both fail to remove ciliary proteins fused to Ub from cilia (Hu et al., 2007; Xu et al., 2015) suggest the provocative possibility that ciliary exit may be tightly coupled to degradative sorting. Nonetheless, the hypothesis that interfering with UbK63 chain formation on ciliary GPCRs indirectly blocks ciliary exit because of a primary defect in endocytosis can be rejected because ubiquitination is not a major determinant of SSTR3 endocytosis and because cilia-AMSH potently and specifically blocks the signal-dependent exit of ciliary GPCRs.

In this context, the contrast between the dramatic increase in ubiquitinated SSTR3 levels in *Arl6*^{-/-} cells compared with WT cells even in the absence of stimulation (Fig. 1, C and D) and the modest increase in ciliary Ub levels in *Arl6*^{-/-} cells compared with WT cells in the absence of stimulation (Fig. 1, A and B) suggest that a considerable amount of ubiquitinated SSTR3 accumulates outside of cilia in *Arl6*^{-/-} cells. One interpretation consistent with a direct coupling between ciliary exit and degradation is that a small fraction of ubiquitinated SSTR3 escapes

cilia in *Arl6*^{-/-} cells but fails to reach the correct degradative route. In this interpretation, the BBSome would deliver its cargo to the ESCRT machinery for routing into the lysosomal degradative pathway.

Ubiquitination and control of the ciliary proteome

A role for ubiquitination in selecting unwanted proteins for removal from cilia may unify the functions of the BBSome in signal-dependent retrieval of GPCRs and the constitutive clearance of proteins that accidentally enter cilia. In both of these cases, unwanted ciliary proteins need to be recognized as “nonself” by a ciliary surveillance machinery. For GPCRs, β -arrestin orchestrates the recognition of activated GPCRs as unwanted by directing their ubiquitination. A fascinating question for future investigations is how the >100 proteins that accumulate in outer segments of *Bbs* photoreceptors are recognized as nonself and tagged with Ub.

Materials and methods

Cell culture

The mouse IMCD3 cell lines used in the study were generated from a parental IMCD3-FlpIn cell line (gift from P.K. Jackson, Stanford University, Stanford, CA). IMCD3-FlpIn cells were cultured in DMEM/F12 (11330-057; Gibco) supplemented with 10% FBS (100-106; Gemini Bio-products), 100 U/ml penicillin-streptomycin (400-109; Gemini Bio-products), and 2 mM L-glutamine (400-106; Gemini Bio-products). The RPE1-hTERT cell line (CRL-4000; ATCC) was cultured in DMEM/F12 supplemented with 10% FBS, 100 U/ml penicillin-streptomycin, 2 mM L-glutamine, and 0.26% sodium bicarbonate (25080; Gibco).

Ciliation was induced by serum starvation in media containing 0.2% FBS for 16–24 h.

Plasmid construction and generation of stable cell lines

Stable isogenic IMCD3 cell lines were generated using the Flp-In system (Thermo Fisher Scientific). Low-expression promoters and additional expression cassettes were introduced into pEF5/FRT (flippase recognition target) plasmid as described (Nager et al., 2017; Ye et al., 2018). To reduce expression levels, the EF1 α promoter was attenuated by mutating the TATA-box (pEF1 α^A) or replaced with a minimal chicken lens δ -crystallin promoter (pCrys).

Coding sequences were amplified from plasmids encoding mouse GPR161 (BC028163; Mammalian Gene Collection; GE Healthcare), mouse SSTR3 (gift from Kirk Mykytyn, Ohio State University, Columbus, OH), and human BBS5 (gift from V. Sheffield, University of Iowa, Iowa City, IA), BirA-ER (gift from Alice Ting, Stanford University). β -Arrestin 2 (a gift from Mark Scott, Institut Cochin, Paris, France) was stably expressed from a cytomegalovirus promoter-based plasmid (pEGFP-N). SSTR3 and SMO expression were driven by pEF1 α^A , GPR161 expression by pCrys, and BBS5 expression by pEF1 α . Coding sequences were fused to GFP, NG (Shaner et al., 2013), or an acceptor peptide for the biotin ligase BirA (AP; Howarth and Ting, 2008). Multiple rounds of site-directed mutagenesis were performed to generate

SSTR3-cKO, a variant with all the cytoplasm-facing lysine residues (K233, K330, K356, K407, and K421) mutated to arginine. GPR161-cKO, a variant with 18 cytoplasm-exposed lysine residues (K83, K84, K93, K167, K247, K250, K269, K296, K358, K362, K455, K469, K473, K481, K486, K497, K504, and K548) mutated to arginine, was gene synthesized (GenScript). Cilia-AMSH was generated by fusing the catalytic domain of mouse AMSH (gift from David Komander, Walter and Eliza Hall Institute of Medical Research, Melbourne, Australia; plasmid no. 66712; Addgene; Michel et al., 2015) with NPHP3[1–200] and GFP to create NPHP3[1–200]-GFP-AMSH[243–424]. A catalytically dead version of AMSH was generated by mutating the water-activating Glu280 residue to Ala (Sato et al., 2008; Huang et al., 2013). pRK5-HA-Ub WT, KO (all seven acceptor lysine residues, K6, K11, K27, K29, K33, K48, and K63, are mutated to arginine), and K63 only (all lysines except K63 mutated to arginines; gift from Ted Dawson, Johns Hopkins, Baltimore, MD; plasmid nos. 17608, 17603, and 17606, respectively; Addgene).

CRISPR-edited *Arl6*^{-/-} and *Arl6*^{-/-}/*Arb2*^{-/-} cell lines were described previously (Liew et al., 2014; Nager et al., 2017). The genotypes are *Arl6*: NM_001347244.1:c.10_25del; c.3_6del; and *Arb2*: NM_001271358.1:c.1_12del;c.112_113del.

Transfection

For generation of all stable cell lines except for the ones expressing β -arrestin 2^{GFP}, FRT-based plasmids were reverse-transfected using XtremeGene9 (Roche) into IMCD3 Flp-In (flippase integration) cells along with a plasmid encoding the Flp recombinase (pOG44), and stable transformants were selected by blasticidin resistance (4 μ g/ml). The transfection mixture was then added to the cells. pEGFP-N• β -arrestin 2 was transfected into IMCD3 cells using Lipofectamine 2000, and clones were selected using neomycin resistance.

Antibodies and drug treatments

The following monoclonal antibodies were used for immunofluorescence: anti-acetylated tubulin (mouse; clone 6-11B-1; Sigma-Aldrich; 1:500), anti-Ub clone FK2 used in all experiments except where indicated (mouse; D058-3; Medical and Biological Laboratories; 1:500), anti-Ub FK1 in Fig. S1, A and B (mouse; D071-3; Medical and Biological Laboratories; 1:500), anti-UbK48 linkage (rabbit; clone Apu2; 05-1307; Millipore-Genentech; 1:500), and anti-UbK63 linkage (human; clone Apu3; a gift from Genentech; 1:500). The following monoclonal antibodies were used for immunoblotting: anti-Ub (mouse; clone P4D1; 3936; Cell Signaling; 1:1,000), anti- α -tubulin (mouse; clone DM1A; MS-581-PIABX; Thermo Fisher Scientific; 1:1,000), anti-HA (mouse; clone 16B12; 901501; Biologend; 1:500), and streptavidin-HRP (Pierce-21140; Thermo Fisher Scientific; 1:10,000). The following polyclonal antibodies were used for immunofluorescence: anti-GPR161 (rabbit; 13398-1-AP; Proteintech; 1:100), anti-SMO (rabbit; a gift from Kathryn Anderson, Memorial Sloan-Kettering Cancer Center, New York, NY; 1:500), and anti-cone-arrestin (rabbit; AB15282; Millipore; 1:500). Biotinylated SSTR3 and GPR161 were detected using Alexa Fluor 647-labeled mSA (mSA647; Ye et al., 2018). The following reagents were used at the indicated concentrations:

200 nM SAG and 10 μ M sst-14. Somatostatin 14 stocks were made in DMEM/F12 media, Hepes, no phenol red (11039-021; GIBCO). SAG was dissolved in DMSO (276855; Sigma-Aldrich).

Imaging and microscopy

Cells were imaged either on a DeltaVision system (Applied Precision) equipped with a PlanApo 60 \times /1.40 objective lens (Olympus), CoolSNAP HQ2 camera (Photometrics), and solid-state illumination module (InsightSSI), or on a confocal LSM 700 (Zeiss) microscope equipped with 40 \times Plan-Apochromat 1.3 DIC oil objective. Z stacks were acquired at 0.5- μ m intervals (LSM 700; Fig. 1, Fig. 3, Fig. 7, and Fig. S1) or 0.2- μ m intervals (DeltaVision; Fig. 4, Fig. 6, Fig. S3, and Fig. S4).

For fixed imaging, 60,000 cells were seeded on acid-washed coverglasses (12 mm no. 1.5; 12-545-81; Thermo Fisher Scientific). Cells were grown for 24 h and then starved for 16–24 h in 0.2% FBS media before experimental treatment. After treatment, cells were fixed with 4% PFA in PBS for 15 min at 37°C and extracted in -20°C methanol for 5 min. Cells were then permeabilized in immunofluorescence (IF) buffer (PBS supplemented with 0.1% Triton X-100, 5% normal donkey serum [017-000-121; Jackson ImmunoResearch Laboratories], and 3% BSA [BP1605-100; Thermo Fisher Scientific]), incubated at room temperature for 1 h with primary antibodies diluted in IF buffer, washed three times in IF buffer, incubated with secondary antibodies (Jackson ImmunoResearch Laboratories), diluted in IF buffer for 30 min, and washed three times with IF buffer. DNA was stained with Hoechst 33258 (H1398; Molecular Probes), cells were washed twice more with PBS, and coverglasses were mounted on slides using fluoromount-G (17984-25; Electron Microscopy Sciences).

For live-cell imaging, 300,000 cells were seeded on acid-washed 25-mm coverglasses (Electron Microscopy Sciences). After 24 h of growth, cells were serum starved for 16 h and transferred to the DeltaVision stage for imaging at 37°C within an environmental chamber that encloses the microscope and the stage. Cells were imaged in DMEM/F12 media, Hepes, no phenol red (11039-021; GIBCO). To measure SSTR3 exit, cells expressing ^{AP}SSTR3 were first washed three times with PBS and then pulse labeled with 2 μ g/ml mSA647 for 5 min at 37°C. Cells were then imaged after addition of sst (for SSTR3) or SAG (for GPR161) for 2 h with an acquisition every 10 min. Each acquisition consisted of a three-plane Z-stack with each plane separated by 0.5 μ m. Transmittance was set to 5% and exposure time to 500 ms.

WT or *Bbs4*^{-/-} mice (Mykytyn et al., 2004) eyes were enucleated at P21. Whole eyes were fixed in 4% PFA/PBS overnight at 4°C and then washed three times with PBS. The eyes were infiltrated in 30% sucrose/PBS at 4°C overnight. Eyes were placed in O.C.T. compound embedding medium (4583; Tissue-Tek), frozen on dry ice, and stored at -80°C. 14- μ m sections were cut on a cryostat (CM 1850; Leica). Sections were processed for immunofluorescence as follows. Sections were blocked in blocking solution (50 mM Tris, pH 7.4, 100 mM NaCl, 0.1% Triton X-100, 3% normal donkey serum, and 0.1% BSA) for 1 h at room temperature and then incubated with primary antibodies overnight at 4°C, followed by three washes in wash solution (50 mM Tris, pH 7.4, 100 mM NaCl, and 0.1% Triton X-100). After rinsing in wash solution, sections were incubated with

secondary antibodies for 1 h at room temperature. DNA was counterstained using Hoechst 33258 dye, and sections washed twice more with PBS and mounted on slides using Fluoromount-G. Sections were imaged on a Confocal LSM 700 (Zeiss) microscope.

Image analysis

Files were imported from the Deltavision or LSM700 workstations into ImageJ/Fiji (National Institutes of Health) for analysis. For the quantification of ciliary Ub signal in fixed cells, maximum intensity projections were used. The ciliary Ub intensity $F_{\text{Ub-cilia}}$ was measured using the following equation:

$$F_{\text{Ub-cilia}} = F_{\text{Ub-cilia_measured}} - F_{\text{background}}$$

$F_{\text{Ub-cilia_measured}}$ is the total ciliary Ub fluorescence detected, and $F_{\text{background}}$ is the background Ub fluorescence measured in the adjacent area. For all measurements, the fluorescence integrated density was used. $F_{\text{Ub-cilia}}$ were plotted as violin plots using the PlotsOfData web tool (<https://huuygens.science.uva.nl/PlotsOfData/>). Each violin represents the distribution of data, which includes all the data points. Median and interquartile range are marked by solid and dotted lines, respectively. No gamma adjustment was applied during figure preparation; all the representative micrographs for respective panels are displayed within the same dynamic range. For some representative micrographs, the most in-focus plane was used rather than the maximum intensity projection (Fig. 3 and Fig. 6, A and C).

To measure SSTR3 exit, the integrated density of Alexa Fluor 647 fluorescence in the maximum intensity projection was measured for each time point. The cilia-adjacent fluorescence was subtracted as the background, and a mathematical photobleaching correction was applied:

$$F_{\text{cilia}} = (F_{\text{mSA647_measured}}/F_{\text{mSA647_1}}) + [(1 - e^{-\lambda}) * (n - 1)],$$

where λ is the photobleaching decay constant, n is the number of images taken, $F_{\text{mSA647_measured}}$ is the integrated mSA647 fluorescence measured for image n , $F_{\text{mSA647_1}}$ is the measurement for the first time point, and F_{cilia} is the reported fluorescence. In this equation, F_{cilia} is reported in relative fluorescence units. $\text{APGPR161}^{\text{3NG}}$ exit was followed similarly with the difference that NG fluorescence intensity was measured. For SSTR3 as well as GPR161, photobleaching-corrected data (F_{cilia}) for each condition were linearly fitted ($F_{\text{cilia}} = m * \text{time} + c$) and plotted in Excel.

Endocytosed SSTR3 foci were revealed by contrast enhancement and counted with the ImageJ particle analysis tool.

C. *rheinardtii* culture, isolation of flagella, and immunofluorescence

C. reinhardtii WT-gl (nit1, agg1, mating type [mt⁺]; gift from George B. Witman, University of Massachusetts Medical School, Worcester, MA) and *Bbs4*⁻ CC-4377 ptx5-1/bbs4-1::NIT1 agg1 mt⁺ (Chlamydomonas Resource Center) strains were cultured asynchronously under light in Tris-acetate-phosphate media (Gorman and Levine, 1965) for 72 h. Flagellar fractions were prepared from 2 liters of cultures of WT or *Bbs4* cells as described (Craig et al., 2013). Briefly, cells were harvested by centrifugation for 5 min at 2,000 rpm (1,100 g) at room temperature. Cells were resuspended in 10 mM Hepes, pH 7.4, and

centrifuged for 5 min at 2,000 rpm (1,100 g). Next, the cell pellet was gently resuspended in ice-cold HMDS (10 mM Hepes, pH 7.4, 5 mM MgSO₄, 1 mM DTT, and 4% [wt/vol] sucrose). Deflagellation was achieved by addition of 5 mM dibucaine to each tube of cells and by pipetting up and down ~10 times using a 10-ml plastic serological pipette. The suspension was spun for 5 min at 1,800 g at 4°C. The supernatant containing flagella was underlaid with 9 ml ice-cold HMDS-25% sucrose (10 mM Hepes, pH 7.4, 5 mM MgSO₄, 1 mM DTT, and 25% [wt/vol] sucrose), followed by a centrifugation step for 10 min at 2,800 rpm (2,400 g), 4°C. The supernatant above the sucrose interface was collected using a 25-ml serological pipette, and flagella were pelleted by centrifugation for 20 min at 30,000 g (16,000 rpm), 4°C. The flagellar pellet was resuspended in 100 μ l HMDS buffer. Protein concentrations were measured by Bradford assays, and 25 μ g were resolved by SDS-PAGE for immunoblotting.

C. reinhardtii immunofluorescence was performed as follows. Cells were fixed with 4% PFA in MT buffer (30 mM Hepes, pH 7, 5 mM EGTA, 5 mM MgSO₄, and 25 mM KCl) for 20 min in suspension. The cells were centrifuged at 1,000 rpm for 5 min, resuspended in 100 μ l of fixative, and transferred onto slides coated with 1 mg/ml poly-L-lysines. After 5 min, the unadhered cells were washed off by rinsing with PBS. Cells were permeabilized in 0.5% Triton X-100 for 20 min followed by blocking for 1 h in blocking buffer (3% fish skin gelatin, 1% BSA, and 0.1% Tween 20 in PBS) at room temperature. Cells were incubated at 4°C overnight with primary antibodies diluted in blocking buffer, washed five times in PBS, and incubated with secondary antibodies for 2 h at room temperature. After five washes in PBS, coverglasses were mounted on slides using Fluoromount-G. Cells were imaged on the LSM700 confocal microscope.

Biochemical analysis of SSTR3 ubiquitination

IMCD3 cells stably expressing pEF1 α ^Δ-APSSSTR3^{NG} and BirA-ER were transiently transfected with HA-tagged Ub plasmids. Cells were reverse transfected using XtremeGene9 and plated onto 15-cm plates. Cells were moved to medium containing 0.2% serum and supplemented with 10 μ M biotin 24 h after transfection to promote ciliation and maximize biotinylation of SSTR3. 18 h after the medium change, sst was added for 0, 10, or 20 min. The assay was stopped by washing cells twice with ice-cold 1 \times PBS and scraping cells off on ice into 1 ml of ice-cold radioimmunoprecipitation assay buffer (50 mM Tris/HCl, pH 8, 150 mM NaCl, 1% Nonidet P-40, 0.5% sodium deoxycholate, 0.1% SDS, 100 mM iodoacetamide, and 10 mM EDTA) supplemented with protease inhibitors (1 mM 4-(2-aminoethyl)benzenesulfonyl fluoride hydrochloride, 0.8 mM aprotinin, 15 mM E-64, 10 mg/ml bestatin, 10 mg/ml pepstatin A, and 10 mg/ml leupeptin). After gently rocking at 4°C for 5 min, lysates were clarified by spinning in a tabletop Eppendorf centrifuge at 15,000 rpm and 4°C for 20 min. Each clarified lysate was incubated with 50 μ l streptavidin Sepharose beads (GE Healthcare) for 1 h at 4°C to capture biotinylated SSTR3. Beads were washed four times with 500 μ l radioimmunoprecipitation assay buffer, and bound proteins were eluted by heating the beads in 1 \times lauryl dodecyl sulfate sample loading buffer containing 2 mM biotin at 70°C for 10 min. After SDS-PAGE and transfer, polyvinylidene fluoride

membranes were probed with anti-HA antibody and streptavidin-HRP.

Signals were acquired with a ChemiDoc imager (Bio-Rad) and analyzed with ImageLab 6.0.1 (Bio-Rad). The integrated densities of the SSTR3 bands in the streptavidin-HRP blot were normalized to the integrated densities of the endogenous biotinylated proteins to correct for variations in the recovery of biotinylated proteins on streptavidin Sepharose. The resulting value is SSTR3_{bio}. Second, the integrated densities of ubiquitinated SSTR3 were collected by measuring the area from 100 kD to the top of the gel on the HA blot. The values were background-corrected by subtracting the value of the equivalent area in the IMCD3 control lane. The resulting value is Ub-SSTR3_{raw}. The relative amount of SSTR3 that is ubiquitinated, Ub-SSTR3_{frac} = Ub-SSTR3_{raw}/SSTR3_{bio}, was plotted on the graphs using Plots-OfData (Postma and Goedhart, 2019).

Online supplemental material

Fig. S1 shows staining of WT and *Arl6*^{-/-} IMCD3 cells expressing AP^{SSTR3}^{NG} with the FK1 anti-Ub antibody and with the UbK63 antibody. Fig. S2 presents the measurement of the ciliary levels of the cytoplasmic lysineless mutants of SSTR3 and GPR161. Fig. S3 shows a micrograph representative of the NPHP3^{CTS}-AMSH expression levels. Fig. S4 contains data supporting the removal of ciliary UbK63 chains by NPHP3^{CTS}-AMSH.

Acknowledgments

We thank Drs. Kirk Mykytyn, Val Sheffield, Alice Ting, and Mark Scott for the gifts of cDNAs; Kathryn Anderson, Vishva Dixit (Genentech, San Francisco, CA), and Felice Dunn (University of California, San Francisco [UCSF], San Francisco, CA) for the gifts of antibodies; Val Sheffield for the gift of the *Bbs4*^{-/-} mice; George B. Witman and the Chlamydomonas Resource Center for the gift of *Chlamydomonas* strains; Yien-Ming Kuo for help with cryosections of mouse retina and core support; Dhivya Kumar and Tyler Picariello for the assistance with *Chlamydomonas* cultures; Nicholas Morante (UCSF) and Jeremy Reiter (UCSF) for providing *Bbs4*^{-/-} mouse eyes; Fan Ye (UCSF) for generating some of the cell lines used in the study; Irene Ojeda Naharros for help with single cilia tracking; the Nachury and von Zastrow laboratories for helpful discussions; and the Ogden and Caspary laboratories for comments on the preprint.

This work was funded by the National Institute of General Medical Sciences (R01-GM089933 to M.V. Nachury). This work was made possible, in part, by a National Eye Institute Core Grant for Vision Research (EY002162) and by the Research to Prevent Blindness Unrestricted Grant (M.V. Nachury).

The authors declare no competing financial interests.

Author contributions: S.R. Shinde conducted all experimental work except for the experiments in Fig. 5, which were conducted by A.R. Nager. M.V. Nachury supervised research. S.R. Shinde and M.V. Nachury wrote the manuscript.

Submitted: 4 March 2020

Revised: 29 September 2020

Accepted: 21 October 2020

Shinde et al.

Ubiquitin chains commit ciliary GPCR to exit cilia

References

- Anvarian, Z., K. Mykytyn, S. Mukhopadhyay, L.B. Pedersen, and S.T. Christensen. 2019. Cellular signalling by primary cilia in development, organ function and disease. *Nat. Rev. Nephrol.* 15:199–219. <https://doi.org/10.1038/s41581-019-0116-9>
- Baker, S.A., M. Haeri, P. Yoo, S.M. Gospe III, N.P. Skiba, B.E. Knox, and V.Y. Arshavsky. 2008. The outer segment serves as a default destination for the trafficking of membrane proteins in photoreceptors. *J. Cell Biol.* 183: 485–498. <https://doi.org/10.1083/jcb.200806009>
- Bhandari, D., J. Trejo, J.L. Benovic, and A. Marchese. 2007. Arrestin-2 interacts with the ubiquitin-protein isopeptide ligase atrophin-interacting protein 4 and mediates endosomal sorting of the chemokine receptor CXCR4. *J. Biol. Chem.* 282:36971–36979. <https://doi.org/10.1074/jbc.M705085200>
- Chiang, A.P., J.S. Beck, H.J. Yen, M.K. Tayeh, T.E. Scheetz, R.E. Swiderski, D.Y. Nishimura, T.A. Braun, K.-Y.A. Kim, J. Huang, et al. 2006. Homozygosity mapping with SNP arrays identifies TRIM32, an E3 ubiquitin ligase, as a Bardet-Biedl syndrome gene (BBS11). *Proc. Natl. Acad. Sci. USA.* 103:6287–6292. <https://doi.org/10.1073/pnas.0600158103>
- Corbit, K.C., P. Aanstad, V. Singla, A.R. Norman, D.Y.R. Stainier, and J.F. Reiter. 2005. Vertebrate Smoothed functions at the primary cilium. *Nature.* 437:1018–1021. <https://doi.org/10.1038/nature04117>
- Cottrell, G.S., B. Padilla, S. Pikiros, D. Roosterman, M. Steinhoff, D. Gehring, E.F. Grady, and N.W. Bunnett. 2006. Ubiquitin-dependent down-regulation of the neurokinin-1 receptor. *J. Biol. Chem.* 281:27773–27783. <https://doi.org/10.1074/jbc.M603369200>
- Craige, B., J.M. Brown, and G.B. Witman. 2013. Isolation of Chlamydomonas flagella. *Curr. Protoc. Cell Biol.* Chapter 3:341.1–3.41.9. doi:10.1002/0471143030.cb0341s59
- Datta, P., C. Allamargot, J.S. Hudson, E.K. Andersen, S. Bhattarai, A.V. Drack, V.C. Sheffield, and S. Seo. 2015. Accumulation of non-outer segment proteins in the outer segment underlies photoreceptor degeneration in Bardet-Biedl syndrome. *Proc. Natl. Acad. Sci. USA.* 112:E4400–E4409. <https://doi.org/10.1073/pnas.1510111112>
- Domire, J.S., J.A. Green, K.G. Lee, A.D. Johnson, C.C. Askwith, and K. Mykytyn. 2011. Dopamine receptor 1 localizes to neuronal cilia in a dynamic process that requires the Bardet-Biedl syndrome proteins. *Cell. Mol. Life Sci.* 68:2951–2960. <https://doi.org/10.1007/s00018-010-0603-4>
- Dores, M.R., and J. Trejo. 2019. Endo-lysosomal sorting of G-protein-coupled receptors by ubiquitin: Diverse pathways for G-protein-coupled receptor destruction and beyond. *Traffic.* 20:101–109. <https://doi.org/10.1111/tra.12619>
- Dores, M.R., H. Lin, N. J. Grimsey, F. Mendez, and J. Trejo. 2015. The α -arrestin ARRD3C3 mediates ALIX ubiquitination and G protein-coupled receptor lysosomal sorting. *Mol. Biol. Cell.* 26:4660–4673. <https://doi.org/10.1091/mbc.E15-05-0284>
- Emmerich, C.H., and P. Cohen. 2015. Optimising methods for the preservation, capture and identification of ubiquitin chains and ubiquitylated proteins by immunoblotting. *Biochem. Biophys. Res. Commun.* 466:1–14. <https://doi.org/10.1016/j.bbrc.2015.08.109>
- Fortian, A., L.K. Dionne, S.H. Hong, W. Kim, S.P. Gygi, S.C. Watkins, and A. Sorkin. 2015. Endocytosis of Ubiquitylation-Deficient EGFR Mutants via Clathrin-Coated Pits is Mediated by Ubiquitylation. *Traffic.* 16:1137–1154. <https://doi.org/10.1111/tra.12314>
- Fujimuro, M., H. Sawada, and H. Yokosawa. 1994. Production and characterization of monoclonal antibodies specific to multi-ubiquitin chains of polyubiquitinated proteins. *FEBS Lett.* 349:173–180. [https://doi.org/10.1016/0014-5793\(94\)00647-4](https://doi.org/10.1016/0014-5793(94)00647-4)
- Gigante, E.D., and T. Caspary. 2020. Signaling in the primary cilium through the lens of the Hedgehog pathway. *Wiley Interdiscip. Rev. Dev. Biol.* 9: e377. <https://doi.org/10.1002/wdev.377>
- Goh, L.K., F. Huang, W. Kim, S. Gygi, and A. Sorkin. 2010. Multiple mechanisms collectively regulate clathrin-mediated endocytosis of the epidermal growth factor receptor. *J. Cell Biol.* 189:871–883. <https://doi.org/10.1083/jcb.201001008>
- Gorman, D.S., and R.P. Levine. 1965. Cytochrome f and plastocyanin: their sequence in the photosynthetic electron transport chain of Chlamydomonas reinhardtii. *Proc. Natl. Acad. Sci. USA.* 54:1665–1669. <https://doi.org/10.1073/pnas.54.6.1665>
- Green, J.A., C.L. Schmid, E. Bley, P.C. Monsma, A. Brown, L.M. Bohn, and K. Mykytyn. 2015. Recruitment of β -Arrestin into Neuronal Cilia Modulates Somatostatin Receptor Subtype 3 Ciliary Localization. *Mol. Cell. Biol.* 36:223–235. <https://doi.org/10.1128/MCB.00765-15>
- Haglund, K., S. Sigismund, S. Polo, I. Szymkiewicz, P.P. Di Fiore, and I. Dikic. 2003. Multiple monoubiquitination of RTKs is sufficient for their

- endocytosis and degradation. *Nat. Cell Biol.* 5:461–466. <https://doi.org/10.1038/ncb983>
- Henry, A.G., I.J. White, M. Marsh, M. von Zastrow, and J.N. Hislop. 2011. The role of ubiquitination in lysosomal trafficking of δ -opioid receptors. *Traffic*. 12:170–184. <https://doi.org/10.1111/j.1600-0854.2010.01145.x>
- Henry, A.G., J.N. Hislop, J. Grove, K. Thorn, M. Marsh, and M. von Zastrow. 2012. Regulation of endocytic clathrin dynamics by cargo ubiquitination. *Dev. Cell*. 23:519–532. <https://doi.org/10.1016/j.devcel.2012.08.003>
- Hislop, J.N., A.G. Henry, and M. von Zastrow. 2011. Ubiquitination in the first cytoplasmic loop of μ -opioid receptors reveals a hierarchical mechanism of lysosomal down-regulation. *J. Biol. Chem.* 286:40193–40204. <https://doi.org/10.1074/jbc.M111.288555>
- Howarth, M., and A.Y. Ting. 2008. Imaging proteins in live mammalian cells with biotin ligase and monovalent streptavidin. *Nat. Protoc.* 3:534–545. <https://doi.org/10.1038/nprot.2008.20>
- Hu, J., S.G. Wittekind, and M.M. Barr. 2007. STAM and Hrs down-regulate ciliary TRP receptors. *Mol. Biol. Cell.* 18:3277–3289. <https://doi.org/10.1091/mbc.e07-03-0239>
- Huang, K., D.R. Diener, and J.L. Rosenbaum. 2009. The ubiquitin conjugation system is involved in the disassembly of cilia and flagella. *J. Cell Biol.* 186:601–613. <https://doi.org/10.1083/jcb.200903066>
- Huang, F., X. Zeng, W. Kim, M. Balasubramani, A. Fortian, S.P. Gygi, N.A. Yates, and A. Sorkin. 2013. Lysine 63-linked polyubiquitination is required for EGF receptor degradation. *Proc. Natl. Acad. Sci. USA*. 110:15722–15727. <https://doi.org/10.1073/pnas.1308014110>
- Husnjak, K., and I. Dikic. 2012. Ubiquitin-binding proteins: decoders of ubiquitin-mediated cellular functions. *Annu. Rev. Biochem.* 81:291–322. <https://doi.org/10.1146/annurev-biochem-051810-094654>
- Jacob, C., G.S. Cottrell, D. Gehringer, F. Schmidlin, E.F. Grady, and N.W. Bunnett. 2005. c-Cbl mediates ubiquitination, degradation, and down-regulation of human protease-activated receptor 2. *J. Biol. Chem.* 280:16076–16087. <https://doi.org/10.1074/jbc.M500109200>
- Jiang, W., X. Yao, Z. Shan, W. Li, Y. Gao, and Q. Zhang. 2019. E3 ligase Herc4 regulates Hedgehog signaling through promoting Smoothed degradation. *J. Mol. Cell Biol.* 11:791–803. <https://doi.org/10.1093/jmcb/mjz024>
- Jin, H., S.R. White, T. Shida, S. Schulz, M. Aguiar, S.P. Gygi, J.F. Bazan, and M.V. Nachury. 2010. The conserved Bardet-Biedl syndrome proteins assemble a coat that traffics membrane proteins to cilia. *Cell*. 141:1208–1219. <https://doi.org/10.1016/j.cell.2010.05.015>
- Kim, J., E.Y.C. Hsia, A. Brigui, A. Plessis, P.A. Beachy, and X. Zheng. 2015. The role of ciliary trafficking in Hedgehog receptor signaling. *Sci. Signal.* 8:ra55. <https://doi.org/10.1126/scisignal.aaa5622>
- Klink, B.U., E. Zent, P. Juneja, A. Kuhlee, S. Raunser, and A. Wittinghofer. 2017. A recombinant BBSome core complex and how it interacts with ciliary cargo. *eLife*. 6:e27434. <https://doi.org/10.7554/eLife.27434>
- Langousis, G., M.M. Shimogawa, E.A. Saada, A.A. Vashisht, R. Spreafico, A.R. Nager, W.D. Barshop, M.V. Nachury, J.A. Wohlschlegel, and K.L. Hill. 2016. Loss of the BBSome perturbs endocytic trafficking and disrupts virulence of *Trypanosoma brucei*. *Proc. Natl. Acad. Sci. USA*. 113:632–637. <https://doi.org/10.1073/pnas.1518079113>
- Lauwers, E., C. Jacob, and B. André. 2009. K63-linked ubiquitin chains as a specific signal for protein sorting into the multivesicular body pathway. *J. Cell Biol.* 185:493–502. <https://doi.org/10.1083/jcb.200810114>
- Lehtreck, K.-F., E.C. Johnson, T. Sakai, D. Cochran, B.A. Ballif, J. Rush, G.J. Pazour, M. Ikebe, and G.B. Witman. 2009. The *Chlamydomonas reinhardtii* BBSome is an IFT cargo required for export of specific signaling proteins from flagella. *J. Cell Biol.* 187:1117–1132. <https://doi.org/10.1083/jcb.200909183>
- Li, J.-G., D.S. Haines, and L.-Y. Liu-Chen. 2008. Agonist-promoted Lys63-linked polyubiquitination of the human κ -opioid receptor is involved in receptor down-regulation. *Mol. Pharmacol.* 73:1319–1330. <https://doi.org/10.1124/mol.107.042846>
- Liew, G.M., F. Ye, A.R. Nager, J.P. Murphy, J.S. Lee, M. Aguiar, D.K. Breslow, S.P. Gygi, and M.V. Nachury. 2014. The intraflagellar transport protein IFT27 promotes BBSome exit from cilia through the GTPase ARL6/BBS3. *Dev. Cell*. 31:265–278. <https://doi.org/10.1016/j.devcel.2014.09.004>
- Loktev, A.V., and P.K. Jackson. 2013. Neuropeptide Y family receptors traffic via the Bardet-Biedl syndrome pathway to signal in neuronal primary cilia. *Cell Rep.* 5:1316–1329. <https://doi.org/10.1016/j.celrep.2013.11.011>
- Malik, R., and A. Marchese. 2010. Arrestin-2 interacts with the endosomal sorting complex required for transport machinery to modulate endosomal sorting of CXCR4. *Mol. Biol. Cell.* 21:2529–2541. <https://doi.org/10.1091/mbc.e10-02-0169>
- Marchese, A., and J.L. Benovic. 2001. Agonist-promoted ubiquitination of the G protein-coupled receptor CXCR4 mediates lysosomal sorting. *J. Biol. Chem.* 276:45509–45512. <https://doi.org/10.1074/jbc.C100527200>
- Marchese, A., C. Raiborg, F. Santini, J.H. Keen, H. Stenmark, and J.L. Benovic. 2003. The E3 ubiquitin ligase AIP4 mediates ubiquitination and sorting of the G protein-coupled receptor CXCR4. *Dev. Cell*. 5:709–722. [https://doi.org/10.1016/S1534-5807\(03\)00321-6](https://doi.org/10.1016/S1534-5807(03)00321-6)
- Martin, N.P., R.J. Lefkowitz, and S.K. Shenoy. 2003. Regulation of V2 vasopressin receptor degradation by agonist-promoted ubiquitination. *J. Biol. Chem.* 278:45954–45959. <https://doi.org/10.1074/jbc.M308285200>
- McCullough, J., M.J. Clague, and S. Urbé. 2004. AMSH is an endosome-associated ubiquitin isopeptidase. *J. Cell Biol.* 166:487–492. <https://doi.org/10.1083/jcb.200401141>
- McCullough, J., P.E. Row, O. Lorenzo, M. Doherty, R. Beynon, M.J. Clague, and S. Urbé. 2006. Activation of the endosome-associated ubiquitin isopeptidase AMSH by STAM, a component of the multivesicular body-sorting machinery. *Curr. Biol.* 16:160–165. <https://doi.org/10.1016/j.cub.2005.11.073>
- Michel, M.A., P.R. Elliott, K.N. Swatek, M. Simicek, J.N. Pruneda, J.L. Wagstaff, S.M.V. Freund, and D. Komander. 2015. Assembly and specific recognition of k29- and k33-linked polyubiquitin. *Mol. Cell*. 58:95–109. <https://doi.org/10.1016/j.molcel.2015.01.042>
- Milenkovic, L., L.E. Weiss, J. Yoon, T.L. Roth, Y.S. Su, S.J. Sahl, M.P. Scott, and W.E. Moerner. 2015. Single-molecule imaging of Hedgehog pathway protein Smoothed in primary cilia reveals binding events regulated by Patched1. *Proc. Natl. Acad. Sci. USA*. 112:8320–8325. <https://doi.org/10.1073/pnas.1510094112>
- Mitchell, D.R. 2017. Evolution of Cilia. *Cold Spring Harb. Perspect. Biol.* 9:a028290. <https://doi.org/10.1101/cshperspect.a028290>
- Mukhopadhyay, S., X. Wen, N. Ratti, A. Loktev, L. Rangell, S.J. Scales, and P.K. Jackson. 2013. The ciliary G-protein-coupled receptor Gpr161 negatively regulates the Sonic hedgehog pathway via cAMP signaling. *Cell*. 152:210–223. <https://doi.org/10.1016/j.cell.2012.12.026>
- Mykytyn, K., and C. Askwith. 2017. G-Protein-Coupled Receptor Signaling in Cilia. *Cold Spring Harb. Perspect. Biol.* 9:a028183. <https://doi.org/10.1101/cshperspect.a028183>
- Mykytyn, K., R.F. Mullins, M. Andrews, A.P. Chiang, R.E. Swiderski, B. Yang, T. Braun, T. Casavant, E.M. Stone, and V.C. Sheffield. 2004. Bardet-Biedl syndrome type 4 (BBS4)-null mice implicate Bbs4 in flagella formation but not global cilia assembly. *Proc. Natl. Acad. Sci. USA*. 101:8664–8669. <https://doi.org/10.1073/pnas.0402354101>
- Nachury, M.V. 2018. The molecular machines that traffic signaling receptors into and out of cilia. *Curr. Opin. Cell Biol.* 51:124–131. <https://doi.org/10.1016/j.cob.2018.03.004>
- Nachury, M.V., and D.U. Mick. 2019. Establishing and regulating the composition of cilia for signal transduction. *Nat. Rev. Mol. Cell Biol.* 20:389–405. <https://doi.org/10.1038/s41580-019-0116-4>
- Nager, A.R., J.S. Goldstein, V. Herranz-Pérez, D. Portran, F. Ye, J.M. García-Verdugo, and M.V. Nachury. 2017. An Actin Network Dispatches Ciliary GPCRs into Extracellular Vesicles to Modulate Signaling. *Cell*. 168:252–263.e14. <https://doi.org/10.1016/j.cell.2016.11.036>
- Nakata, K., D. Shiba, D. Kobayashi, and T. Yokoyama. 2012. Targeting of Nphp3 to the primary cilia is controlled by an N-terminal myristoylation site and coiled-coil domains. *Cytoskeleton (Hoboken)*. 69:221–234. <https://doi.org/10.1002/cm.21014>
- Newton, K., M.L. Matsumoto, I.E. Wertz, D.S. Kirkpatrick, J.R. Lill, J. Tan, D. Dugger, N. Gordon, S.S. Sidhu, F.A. Felloose, et al. 2008. Ubiquitin chain editing revealed by polyubiquitin linkage-specific antibodies. *Cell*. 134:668–678. <https://doi.org/10.1016/j.cell.2008.07.039>
- Ocbina, P.J.R., and K.V. Anderson. 2008. Intraflagellar transport, cilia, and mammalian Hedgehog signaling: analysis in mouse embryonic fibroblasts. *Dev. Dyn.* 237:2030–2038. <https://doi.org/10.1002/dvdy.21551>
- Pal, K., S.H. Hwang, B. Somatilaka, H. Badgandi, P.K. Jackson, K. DeFea, and S. Mukhopadhyay. 2016. Smoothed determines β -arrestin-mediated removal of the G protein-coupled receptor Gpr161 from the primary cilium. *J. Cell Biol.* 212:861–875. <https://doi.org/10.1083/jcb.201506132>
- Pedersen, L.B., J.B. Mogensen, and S.T. Christensen. 2016. Endocytic Control of Cellular Signaling at the Primary Cilium. *Trends Biochem. Sci.* 41:784–797. <https://doi.org/10.1016/j.tibs.2016.06.002>
- Piper, R.C., I. Dikic, and G.L. Lukacs. 2014. Ubiquitin-dependent sorting in endocytosis. *Cold Spring Harb. Perspect. Biol.* 6:a016808. <https://doi.org/10.1101/cshperspect.a016808>
- Postma, M., and J. Goedhart. 2019. PlotsOfData-A web app for visualizing data together with their summaries. *PLoS Biol.* 17:e3000202. <https://doi.org/10.1371/journal.pbio.3000202>
- Rohatgi, R., L. Milenkovic, and M.P. Scott. 2007. Patched1 regulates hedgehog signaling at the primary cilium. *Science*. 317:372–376. <https://doi.org/10.1126/science.1139740>

- Sato, Y., A. Yoshikawa, A. Yamagata, H. Mimura, M. Yamashita, K. Ookata, O. Nureki, K. Iwai, M. Komada, and S. Fukui. 2008. Structural basis for specific cleavage of Lys 63-linked polyubiquitin chains. *Nature*. 455: 358–362. <https://doi.org/10.1038/nature07254>
- Schmid, F.M., K.B. Schou, M.J. Vilhelm, M.S. Holm, L. Breslin, P. Farinelli, L.A. Larsen, J.S. Andersen, L.B. Pedersen, and S.T. Christensen. 2018. IFT20 modulates ciliary PDGFR α signaling by regulating the stability of Cbl E3 ubiquitin ligases. *J. Cell Biol.* 217:151–161. <https://doi.org/10.1083/jcb.201611050>
- Seo, S., Q. Zhang, K. Bugge, D.K. Breslow, C.C. Searby, M.V. Nachury, and V.C. Sheffield. 2011. A novel protein LZTFL1 regulates ciliary trafficking of the BBSome and Smoothened. *PLoS Genet.* 7:e1002358. <https://doi.org/10.1371/journal.pgen.1002358>
- Shaner, N.C., G.G. Lambert, A. Chammas, Y. Ni, P.J. Cranfill, M.A. Baird, B.R. Sell, J.R. Allen, R.N. Day, M. Israelsson, et al. 2013. A bright monomeric green fluorescent protein derived from *Branchiostoma lanceolatum*. *Nat. Methods*. 10:407–409. <https://doi.org/10.1038/nmeth.2413>
- Shankar, H., A. Michal, R.C. Kern, D.S. Kang, V.V. Gurevich, J.L. Benovic, D.S. Kang, D.S. Kang, V.V. Gurevich, V.V. Gurevich, and J.L. Benovic. 2010. Non-visual arrestins are constitutively associated with the centrosome and regulate centrosome function. *J. Biol. Chem.* 285:8316–8329. <https://doi.org/10.1074/jbc.M109.062521>
- Shearer, R.F., and D.N. Saunders. 2016. Regulation of primary cilia formation by the ubiquitin-proteasome system. *Biochem. Soc. Trans.* 44:1265–1271. <https://doi.org/10.1042/BST20160174>
- Shenoy, S.K., and R.J. Lefkowitz. 2003. Trafficking patterns of β -arrestin and G protein-coupled receptors determined by the kinetics of β -arrestin deubiquitination. *J. Biol. Chem.* 278:14498–14506. <https://doi.org/10.1074/jbc.M209626200>
- Shenoy, S.K., P.H. McDonald, T.A. Kohout, and R.J. Lefkowitz. 2001. Regulation of receptor fate by ubiquitination of activated beta 2-adrenergic receptor and beta-arrestin. *Science*. 294:1307–1313. <https://doi.org/10.1126/science.1063866>
- Shenoy, S.K., L.S. Barak, K. Xiao, S. Ahn, M. Berthouze, A.K. Shukla, L.M. Luttrell, and R.J. Lefkowitz. 2007. Ubiquitination of beta-arrestin links seven-transmembrane receptor endocytosis and ERK activation. *J. Biol. Chem.* 282:29549–29562. <https://doi.org/10.1074/jbc.M700852200>
- Shenoy, S.K., K. Xiao, V. Venkataramanan, P.M. Snyder, N.J. Freedman, and A.M. Weissman. 2008. Nedd4 mediates agonist-dependent ubiquitination, lysosomal targeting, and degradation of the beta2-adrenergic receptor. *J. Biol. Chem.* 283:22166–22176. <https://doi.org/10.1074/jbc.M709668200>
- Skieterska, K., P. Rondou, and K. Van Craenenbroeck. 2017. Regulation of G Protein-Coupled Receptors by Ubiquitination. *Int. J. Mol. Sci.* 18:E923. <https://doi.org/10.3390/ijms18050923>
- Sorokin, S. 1962. Centrioles and the formation of rudimentary cilia by fibroblasts and smooth muscle cells. *J. Cell Biol.* 15:363–377. <https://doi.org/10.1083/jcb.15.2.363>
- Stringer, D.K., and R.C. Piper. 2011. A single ubiquitin is sufficient for cargo protein entry into MVBs in the absence of ESCRT ubiquitination. *J. Cell Biol.* 192:229–242. <https://doi.org/10.1083/jcb.201008121>
- Swatek, K.N., and D. Komander. 2016. Ubiquitin modifications. *Cell Res.* 26: 399–422. <https://doi.org/10.1038/cr.2016.39>
- Wang, Q., Z. Peng, H. Long, X. Deng, and K. Huang. 2019. Polyubiquitylation of α -tubulin at K304 is required for flagellar disassembly in *Chlamydomonas*. *J. Cell Sci.* 132:jcs229047. <https://doi.org/10.1242/jcs.229047>
- Westlake, C.J., L.M. Baye, M.V. Nachury, K.J. Wright, K.E. Ervin, L. Phu, C. Chalouni, J.S. Beck, D.S. Kirkpatrick, D.C. Slusarski, et al. 2011. Primary cilia membrane assembly is initiated by Rab11 and transport protein particle II (TRAPP2) complex-dependent trafficking of Rabin8 to the centrosome. *Proc. Natl. Acad. Sci. USA.* 108:2759–2764. <https://doi.org/10.1073/pnas.1018823108>
- Wingfield, J.L., K.-F. Lechtreck, and E. Lorentzen. 2018. Trafficking of ciliary membrane proteins by the intraflagellar transport/BBSome machinery. *Essays Biochem.* 62:753–763. <https://doi.org/10.1042/EBC20180030>
- Wright, K.J., L.M. Baye, A. Olivier-Mason, S. Mukhopadhyay, L. Sang, M. Kwong, W. Wang, P.R. Pretorius, V.C. Sheffield, P. Sengupta, et al. 2011. An ARL3-UNC119-RP2 GTPase cycle targets myristoylated NPHP3 to the primary cilium. *Genes Dev.* 25:2347–2360. <https://doi.org/10.1101/gad.173443.111>
- Xia, R., H. Jia, J. Fan, Y. Liu, and J. Jia. 2012. USP8 promotes smoothened signaling by preventing its ubiquitination and changing its subcellular localization. *PLoS Biol.* 10:e1001238. <https://doi.org/10.1371/journal.pbio.1001238>
- Xu, Q., Y. Zhang, Q. Wei, Y. Huang, Y. Li, K. Ling, and J. Hu. 2015. BBS4 and BBS5 show functional redundancy in the BBSome to regulate the degradative sorting of ciliary sensory receptors. *Sci. Rep.* 5:11855. <https://doi.org/10.1038/srep11855>
- Yau, R., and M. Rape. 2016. The increasing complexity of the ubiquitin code. *Nat. Cell Biol.* 18:579–586. <https://doi.org/10.1038/ncb3358>
- Ye, F., A.R. Nager, and M.V. Nachury. 2018. BBSome trains remove activated GPCRs from cilia by enabling passage through the transition zone. *J. Cell Biol.* 217:1847–1868. <https://doi.org/10.1083/jcb.201709041>
- Yue, S., L.-Y. Tang, Y. Tang, Y. Tang, Q.-H. Shen, J. Ding, Y. Chen, Z. Zhang, T.-T. Yu, Y.E. Zhang, and S.Y. Cheng. 2014. Requirement of Smurf-mediated endocytosis of Patched1 in sonic hedgehog signal reception. *eLife*. 3:e02555. <https://doi.org/10.7554/eLife.02555>
- Zhang, Q., D. Nishimura, S. Seo, T. Vogel, D.A. Morgan, C. Searby, K. Bugge, E.M. Stone, K. Rahmouni, and V.C. Sheffield. 2011. Bardet-Biedl syndrome 3 (Bbs3) knockout mouse model reveals common BBS-associated phenotypes and Bbs3 unique phenotypes. *Proc. Natl. Acad. Sci. USA.* 108: 20678–20683. <https://doi.org/10.1073/pnas.1113220108>

Supplemental material

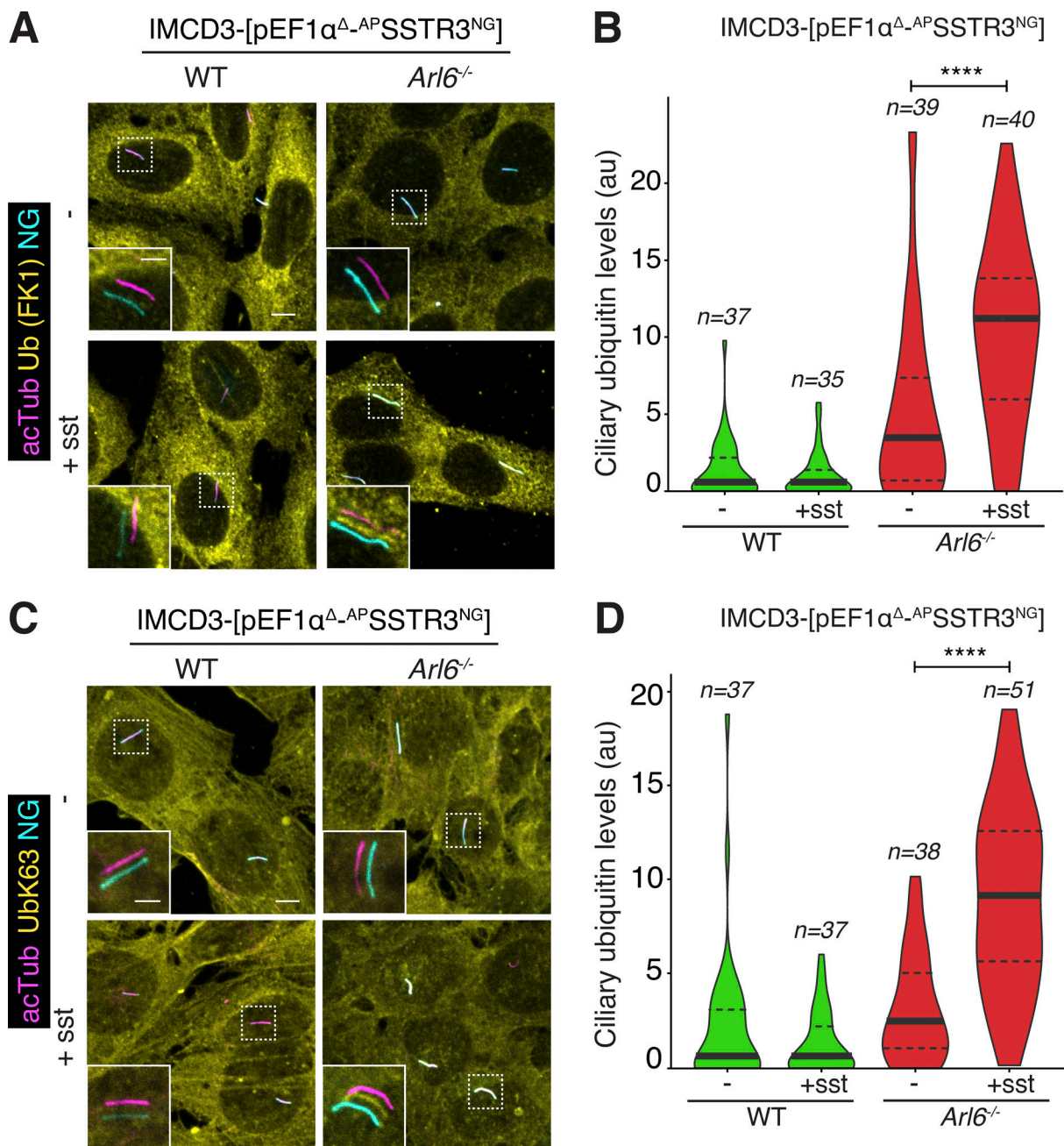


Figure S1. **Signal-dependent ubiquitination of ciliary GPCRs.** (A) IMCD3 cells of the indicated genotypes expressing APSSSTR3^{NG} were treated with sst for 2 h. Cells were fixed and stained for Ub with the FK1 monoclonal antibody (Ub [FK1], yellow) and acetylated tubulin (acTub, magenta). APSSSTR3^{NG} (cyan) was imaged through the intrinsic fluorescence of NG. Channels are shifted in the insets to facilitate visualization of overlapping ciliary signals. Scale bars, 5 μ m (main panel), 2 μ m (inset). (B) Violin plots of the fluorescence intensity of the Ub channel in the cilium in each condition are shown. A threefold increase in ciliary Ub signal is observed upon addition of sst to SSTR3-expressing cells. Asterisks indicate ANOVA significance value. ****, $P \leq 0.0001$. (C) IMCD3 cells of the indicated genotypes expressing APSSSTR3^{NG} were treated with sst for 2 h. Cells were fixed and stained for acTub (magenta) and UbK63 (yellow). APSSSTR3^{NG} (cyan) was imaged through the intrinsic fluorescence of NG. Channels are shifted in the insets to facilitate visualization of overlapping ciliary signals. Scale bars, 5 μ m (main panel), 2 μ m (inset). (D) The fluorescence intensity of the UbK63 channel in the cilium is represented as violin plots. Asterisks indicate ANOVA significance value. ****, $P \leq 0.0001$. au, arbitrary units.

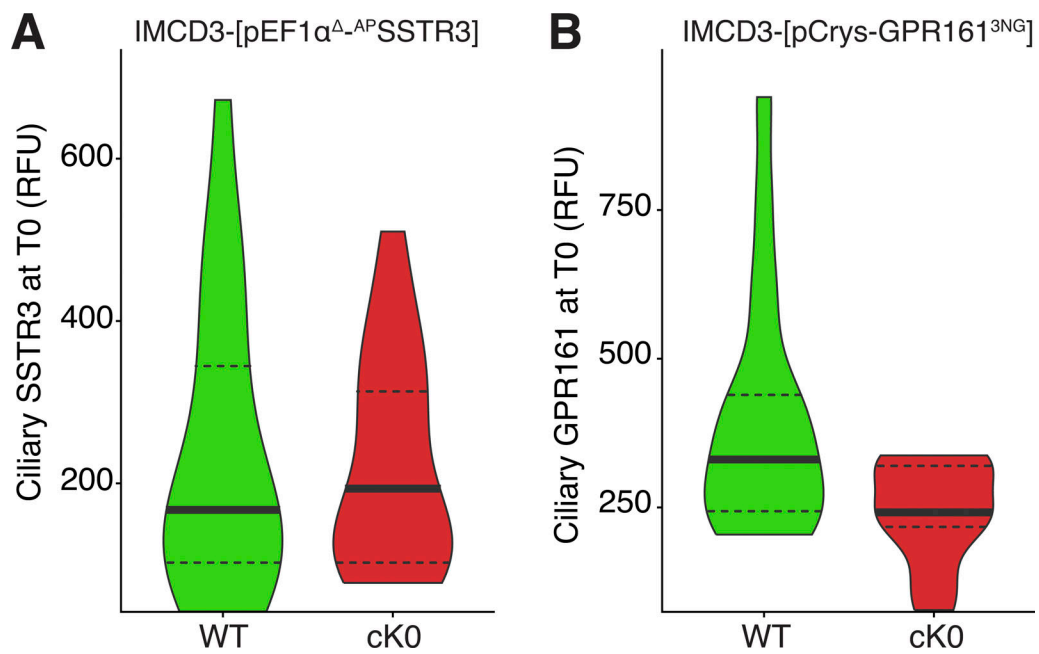


Figure S2. **Fluorescence intensities of WT and cKO GPCR variants at $t = 0$.** **(A)** Ciliary ^{AP}SSTR3 was pulse labeled by addition of Alexa Fluor 647-conjugated mSA (mSA647) to the medium for 5–10 min before addition of sst. Violin plots of the ciliary fluorescence intensities for WT and cKO SSTR3 imaged in the far-red channel at $t = 0$ are shown. $n = 18$ –22 cilia. **(B)** Violin plots of the fluorescence intensities of NG fluorescence corresponding to WT and cKO GPR161^{NG} at $t = 0$ are shown. $n = 10$ –19 cilia. RFU, relative fluorescence unit.

acTub DNA NPHP3^{CTS}
 NPHP3^{CTS} - AMSH

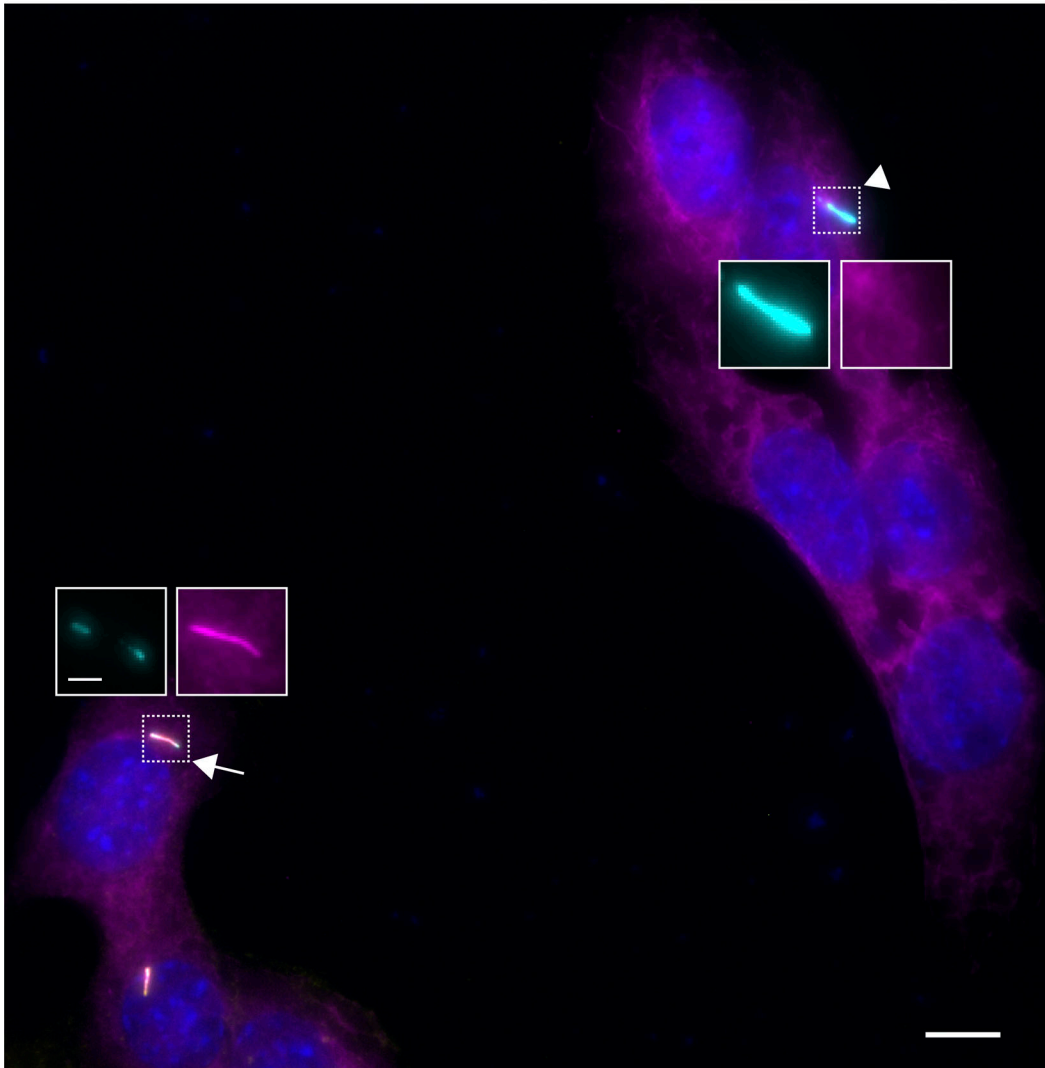


Figure S3. **Expression levels of ciliary AMSH.** IMCD3-[pEF1 α^A -AP^SSSTR3; pEF1 α -BirA•ER] cells were transfected with the plasmid expressing NPHP3^{CTS}-AMSH as in Fig. 4, before fixation and staining for acetylated tubulin (acTub, magenta) and DNA (blue). The NPHP3^{CTS} fusions were visualized through the intrinsic fluorescence of GFP (cyan). A representative micrograph is shown. A cell expressing modest levels of cilia-AMSH is indicated by an arrow and possesses normal ciliary staining of acetylated tubulin. A cell expressing high levels of cilia-AMSH indicated by an arrowhead displays abnormal ciliary levels of acetylated tubulin. Cells with high ciliary levels of NPHP3^{CTS}-AMSH were excluded from the analysis, and only cells with modest ciliary levels of NPHP3^{CTS}-AMSH were included in the experiment. Scale bars, 5 μ m (main panel), 1 μ m (inset).

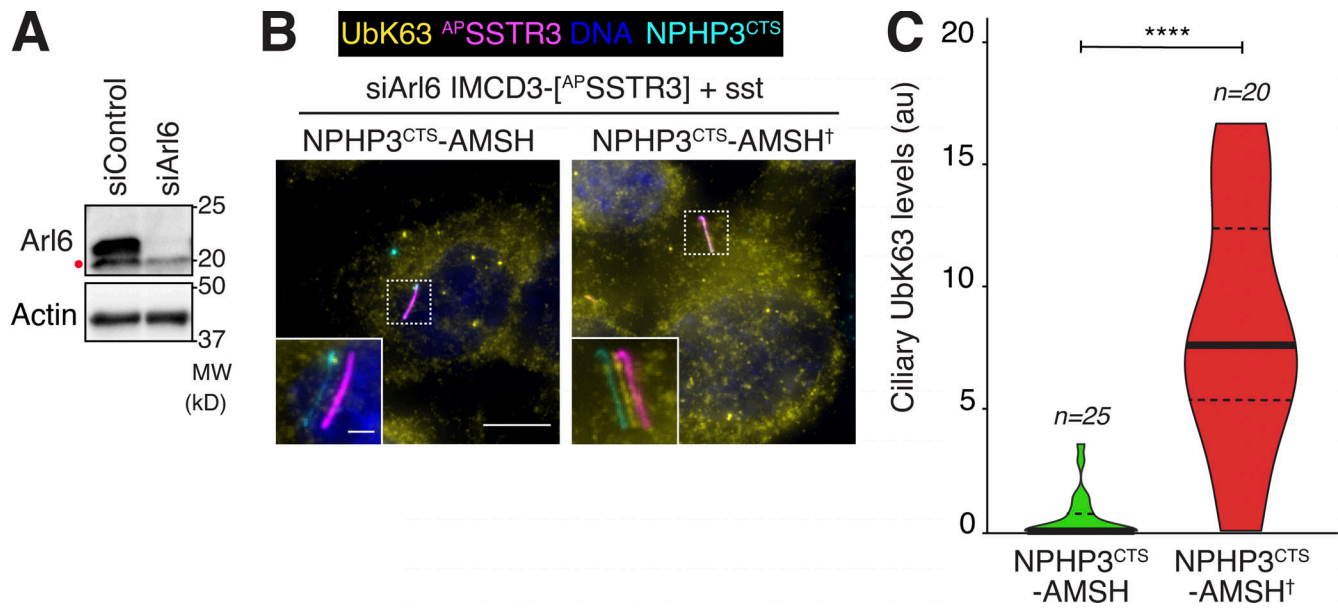


Figure S4. **Cilia-targeted AMSH removes UbK63 chains from ciliary substrates.** **(A)** IMCD3-[pEF1 α^{Δ} -^{AP}SSTR3; pEF1 α -BirA•ER] cells were transfected with control or Arl6 siRNAs. Cell lysates were immunoblotted for Arl6 or actin. A nonspecific band cross-reacting with the anti-Arl6 antibody is marked with a dot. **(B)** IMCD3-(^{AP}SSTR3; BirA•ER) cells were transfected with siRNA targeting Arl6 and plasmids expressing NPHP3^{CTS}-AMSH or NPHP3^{CTS}-AMSH[†]. Surface-exposed ^{AP}SSTR3 was pulse-labeled with mSA647 for 5–10 min, and cells were then treated with sst for 2 h before fixation and staining for UbK63 (yellow). The NPHP3^{CTS}-AMSH fusions were visualized through the intrinsic fluorescence of GFP (cyan), ^{AP}SSTR3 was visualized via mSA647 (magenta), and DNA is blue. Channels are shifted in the insets to facilitate visualization of overlapping ciliary signals. Scale bars, 5 μ m (main panel), 2 μ m (inset). **(C)** The fluorescence intensities of the UbK63 signal inside cilia are represented as violin plots. Asterisks indicate Mann–Whitney test significance value. ****, $P \leq 0.0001$. au, arbitrary units; si, short interfering. MW, molecular weight.