

Cancer type-dependent genetic interactions between cancer driver alterations indicate plasticity of epistasis across cell types

Solip Park^{1,2} & Ben Lehner^{1,2,3,*}

Abstract

Cancers, like many diseases, are normally caused by combinations of genetic alterations rather than by changes affecting single genes. It is well established that the genetic alterations that drive cancer often interact epistatically, having greater or weaker consequences in combination than expected from their individual effects. In a stringent statistical analysis of data from > 3,000 tumors, we find that the co-occurrence and mutual exclusivity relationships between cancer driver alterations change quite extensively in different types of cancer. This cannot be accounted for by variation in tumor heterogeneity or unrecognized cancer subtypes. Rather, it suggests that how genomic alterations interact cooperatively or partially redundantly to driver cancer changes in different types of cancers. This re-wiring of epistasis across cell types is likely to be a basic feature of genetic architecture, with important implications for understanding the evolution of multicellularity and human genetic diseases. In addition, if this plasticity of epistasis across cell types is also true for synthetic lethal interactions, a synthetic lethal strategy to kill cancer cells may frequently work in one type of cancer but prove ineffective in another.

Keywords cancer; epistasis; evolution; genetic interaction networks; tissue specificity

Subject Categories Network Biology; Genetics, Gene Therapy & Genetic Disease; Cancer

DOI 10.15252/msb.20156102 | Received 15 February 2015 | Revised 7 July 2015 | Accepted 9 July 2015

Mol Syst Biol. (2015) **11**: 824

Introduction

Most genomic alterations that contribute to cancer affect proteins that are widely expressed and perform functions in most or all cells of the body. However, individual cancer genes often vary dramatically in their importance in different types of cancer (Vogelstein & Kinzler, 2004). Human cancer genome sequencing

projects have confirmed this striking heterogeneity of the causal driver alterations across different types of cancer (Ciriello *et al*, 2013; Ding & Wendl, 2013; Kandoth *et al*, 2013a; Zack *et al*, 2013), and indeed, individual genomic alterations vary in their potency to drive cancer when engineered in different cell types in mice (Castellano & Santos, 2011).

Epidemiological modeling in the 1960s predicted that the development of cancer normally involves multiple rate-limiting events (Nordling, 1953; Armitage & Doll, 1954; Cook *et al*, 1969). Subsequently, the discovery of the phenomenon of oncogene cooperation demonstrated that cancer-causing genomic alterations often cooperate with synergistic effects on cell proliferation or survival (Land *et al*, 1983; Ruley, 1983). Cooperation is an example of epistasis (genetic interaction)—the phenomenon whereby the phenotypic effects of combining two mutations differ from the expectation based on the consequences of each mutation alone (Lehner, 2011). Cooperation between two drivers is reflected in the co-occurrence of the two genomic alterations in the same tumors more often than expected by chance. Other cancer driver alterations interact antagonistically, having partially redundant effects giving rise to mutual exclusivity in their occurrence across individual tumors (Ciriello *et al*, 2012).

Epistasis is also an important concept in cancer drug discovery, with substantial efforts directed toward identifying proteins that cause “synthetic lethality” when inhibited in combination with cancer-associated driver or passenger mutations (Hartwell *et al*, 1997; Luo *et al*, 2009; Nijman & Friend, 2013). For example, the synthetic lethal interaction between *BRCA2* mutations and PARP inhibition in breast cancer cells has led to the clinical use of PARP inhibitors in breast cancer patients (Ashworth *et al*, 2011).

An early computational prediction about epistasis in unicellular organisms was that genetic interactions would change depending upon the environmental conditions (Harrison *et al*, 2007). The environmental context dependence of epistasis has been demonstrated in multiple experimental studies (Harrison *et al*, 2007; St Onge *et al*, 2007; Bandyopadhyay *et al*, 2010; Guenole *et al*, 2013; Zhu *et al*, 2014), and epistatic interactions have also been reported to vary across species (Dixon *et al*, 2008; Roguev *et al*, 2008; Tischler *et al*, 2008). Similarly, even within the same cell, how two genetic

1 EMBL-CRG Systems Biology Research Unit, Centre for Genomic Regulation (CRG), Barcelona, Spain

2 Universitat Pompeu Fabra, Barcelona, Spain

3 Institutió Catalana de Recerca i Estudis Avançats (ICREA), Barcelona, Spain

*Corresponding author. Tel: +34 933 160 194; E-mail: ben.lehner@crgeu

perturbations interact can differ depending upon the phenotype that is being assayed (Laufer *et al.*, 2013).

Using data from more than three thousand human tumors, we show here in a stringent statistical analysis that mutual exclusivity and co-occurrence interactions between cancer driver alterations are frequent, but also that they change in different types of cancer. This plasticity of epistasis across cell types is likely to be a basic feature of genetic architecture in multicellular organisms with implications for designing cancer therapeutics and for understanding evolution and other human genetic diseases.

Results

Systematic identification of mutual exclusivity and co-occurrence relationships in human tumors

To identify significant mutual exclusivity and co-occurrence relationships between genomic alterations that contribute to human cancers, we analyzed data from 3,164 tumors of 22 different types studied by The Cancer Genome Atlas (TCGA) consortium (Ciriello *et al.*, 2013; Weinstein *et al.*, 2013) (Table EV1). We only considered single nucleotide variants (SNVs) in genes significantly mutated in human cancers, recurrent copy number aberrations (CNAs), and a set of recurrent promoter DNA methylation events (see Materials and Methods). To increase statistical power, we restricted our analyses to high-frequency driver events, considering alterations detected in at least 2% of the samples under consideration (Table EV2). We also employed a randomization procedure that accounts for the heterogeneous distribution of alterations across alteration types, samples, and cancer types (Fig 1A; see Materials and Methods).

Considering all 3,164 tumors in a single analysis identified 55 significant relationships between the 86 most recurrent driver alterations (false discovery rate, FDR = 0.1; Fig EV1A and B; Table EV3). The interactions were quite evenly balanced between co-occurrence (30 positive interactions) and mutual exclusivity (25 negative interactions). Not surprisingly, more significant interactions were identified for alterations with a higher frequency of occurrence (Spearman's rank correlation coefficient = 0.34, P -value < 0.019; Fig EV1C), suggesting that many more interactions will be discovered as more tumors are sequenced and more cancer types are analyzed (Fig EV1E–G).

The interactions include intuitive relationships between genes within the same signaling pathways (Fig EV1D). For example, interactions were enriched among genes involved in G1/S phase cell cycle regulation (11 interactions among mutation of *TP53*, *CDKN2A*, *RB1*, *EGFR*, and amplifications of 8q24 containing *MYC* and 12q13 where *CDK4* is located) and among genes in the Ras/Raf/MAPK pathway (three interactions among mutation of *BRAF*, *KRAS*, and *PIK3CA*). Previously reported examples of co-occurrence were also detected, including between *PIK3CA* and *KRAS*, and between *CDKN2A* and *TP53* (Kandoth *et al.*, 2013a).

Identification of interactions in individual cancer types

Considering the cancer genome dataset as a single entity biases the discovery of interactions toward those that are conserved across

different cancer types or very strong within a subset of cancers. Therefore, we also tested for interactions between recurrent alterations in each of the 22 cancer types considered individually (Fig 1A and B). The single cancer type analyses identified 60 interactions between cancer drivers, including 39 not detected in the pan-cancer analysis (Fig 1C, FDR = 0.1). For example, an additional six interactions were detected with the *p53* tumor suppressor, and an additional four interactions were detected with deletion of 9p21 where *CDKN2A* is located (Table EV4). Comparing across cancer types, more interactions were detected in cancers in which the median number of samples in which a driver alteration is detected is larger (Spearman's rank correlation coefficient = 0.64, P -value = 0.0013, Fig EV2). The interactions include 17 supported by their detection in independent datasets (Table EV4) and at least two that have also been validated using functional assays (Zhao & Vogt, 2008; Etemadmoghadam *et al.*, 2013).

Interactions between cancer drivers are frequently cancer type specific

Interestingly, in the single cancer type analyses, more than 90% of the interactions were only detected in a single cancer type (Fig 1D; Table EV4). This suggested that how driver alterations interact might be different in different types of cancer. To more directly test this hypothesis, we used an odds ratio (OR) heterogeneity test and permuted data to control for confounders (see Materials and Methods) to evaluate whether each interaction differed between two cancer types. Across all cancer types, we were able to test whether 52 pairs of alterations detected as interacting in one cancer type showed specificity for that type of cancer. Each interaction was re-tested in a median of three other cancer types (mean = 4.3, Fig 2A and B).

This analysis revealed that 57% of the interactions were specific to particular types of cancer (FDR = 0.1, Figs 2A and EV3). This included 53% of the examples of co-occurrence and 65% of the examples of mutual exclusivity (Fig 2C). Differential interactions were detected both when comparing between cancers from different tissues and when comparing between cancer subtypes from the same tissue (Table EV5).

To illustrate how the interactions change across cancer types, in Figure 3 we provide two views of the interaction network detected in each cancer type: a static network indicating the strength of interaction, and a differential network indicating the extent to which each interaction changes in other types of cancer. Together, these networks illustrate how the detected interactions between drivers change across different types of cancer.

Cancer type-specific interactions identify functionally related cancer drivers

We compiled datasets of physical and functional interactions between human proteins to investigate how the co-occurrence and mutual exclusivity interactions detected in the tumors relate to previously described relationships between proteins (see Materials and Methods). This revealed that the detected interactions are strongly enriched between genes whose products are known to physically or functionally interact (Fig 2D). Interestingly, the interactions showing cancer type specificity are more enriched between genes encoding physically (~5- to 16-fold) or functionally interacting

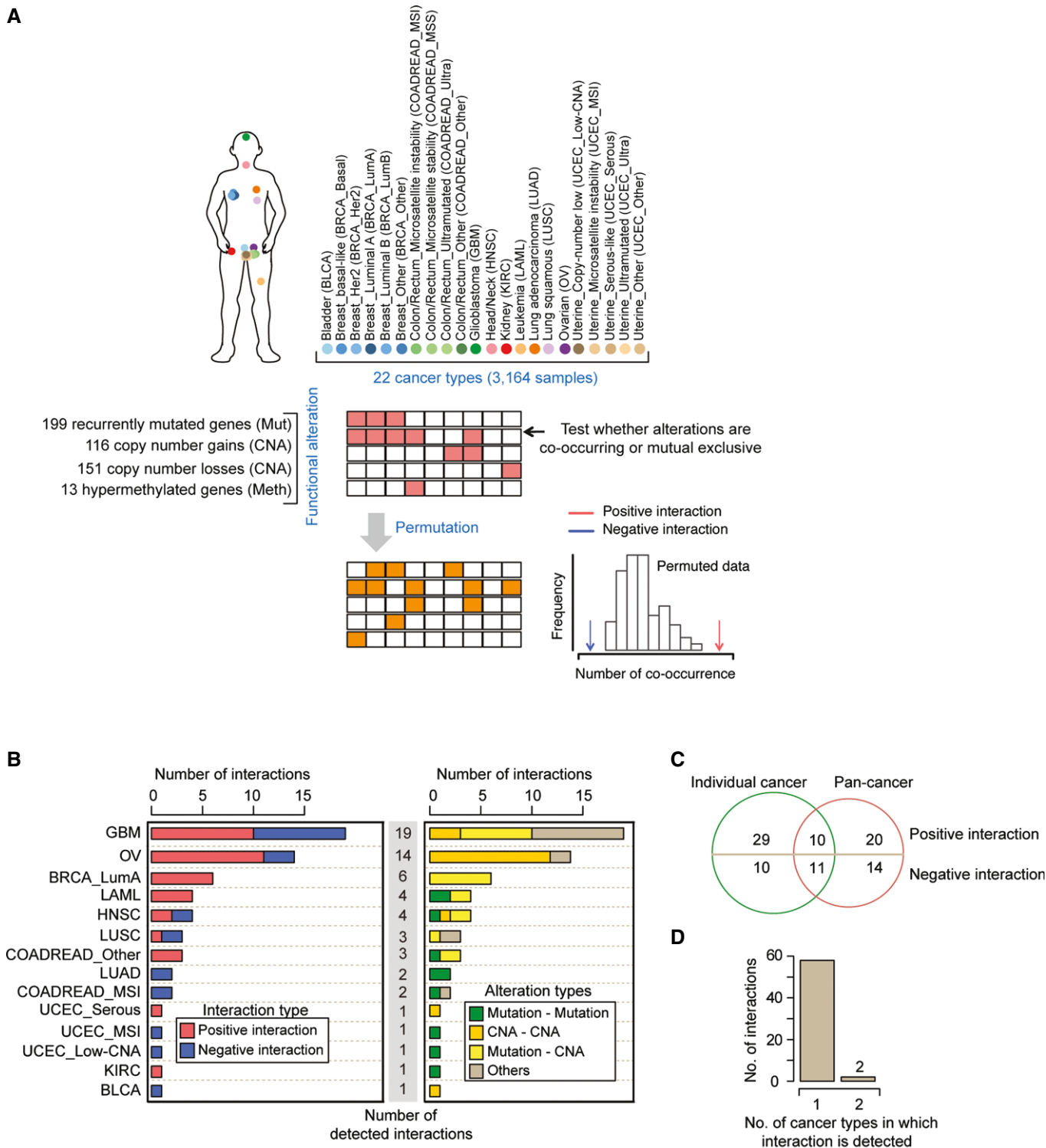


Figure 1. Identification of co-occurrence and mutual exclusivity interactions in different types of cancer.

- A Randomization procedure to identify interactions across 22 cancer types.
- B Numbers of interactions, their interaction types (left), and their alteration types (right) identified in analyses of 14 different cancer types in which interactions were detected (FDR = 0.1). The remaining 8 of 22 cancer types had no detected interactions. See Figure EV1 for the same analysis at a stricter FDR (FDR = 0.05).
- C Overlap between the interactions detected in the pan-cancer analysis and in the analyses of individual cancer types. Of the 39 interactions only detected in the analyses of individual cancer types, 10 were also tested in the pan-cancer analysis. All of the 34 interactions only detected in the pan-cancer analysis were also tested in at least one individual cancer type.
- D Most interactions were only detected in a single type of cancer.

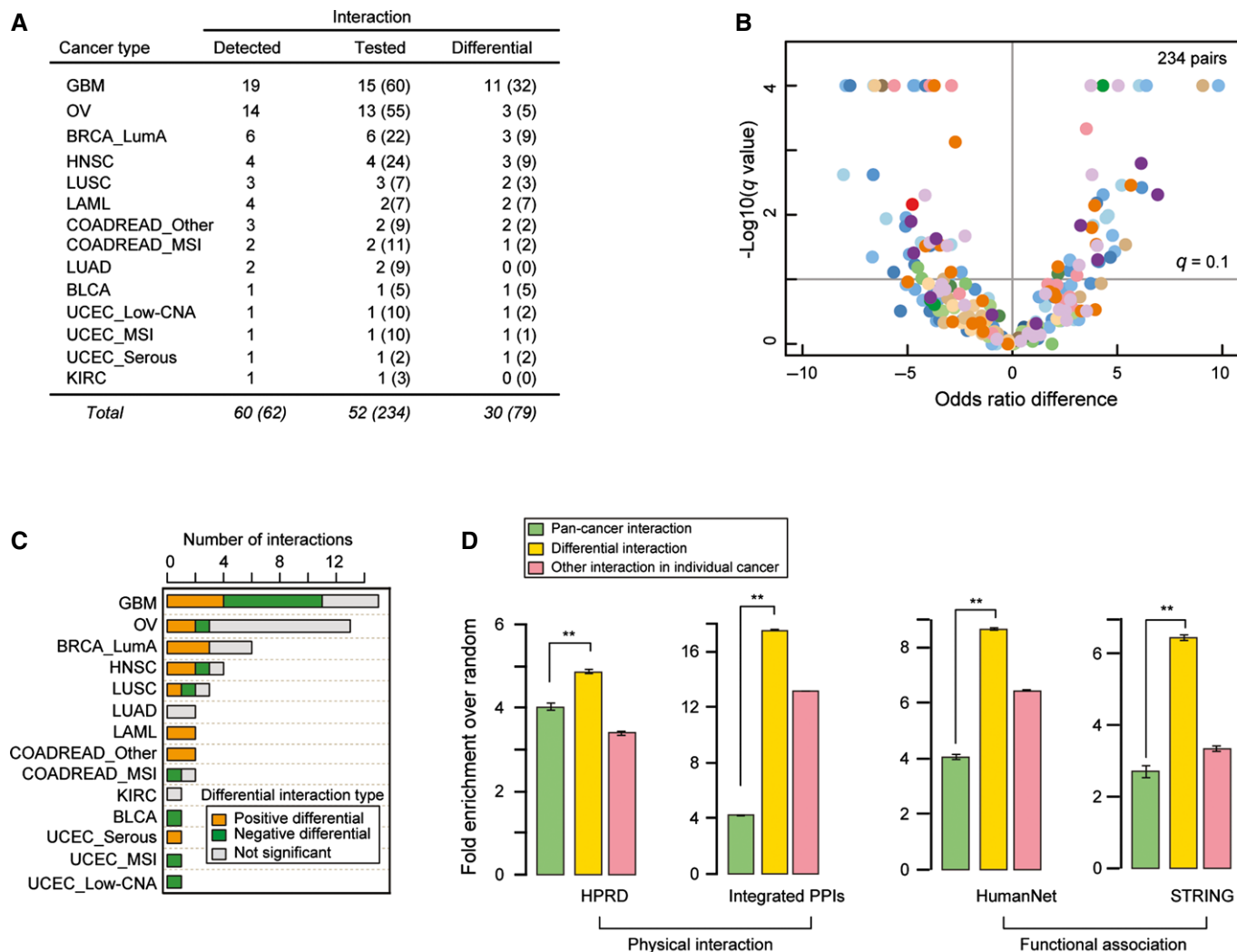


Figure 2. Identifying differential interactions across cancer types and their functional enrichment.

- A Fifty-two of sixty driver pairs detected as interacting in one cancer type could be re-tested in at least one other cancer type and 30 of these were detected as interacting differentially (FDR = 0.1). Numbers in parentheses indicate the total number of interactions re-tested and detected, including any redundancy of retesting and detection across different cancer types.
- B Volcano plot comparing differences of the log of the odds ratios for the co-occurrence of genomic events in two cancer types (i.e., detected cancer type and compared cancer type). A total of 52 detected interactions were re-tested a total of 234 times in additional cancer types. Color coding is for the cancer type in which the interaction was re-tested, as in Figure 1.
- C Number of significant positive differential, significant negative differential, and non-significantly differential interactions in each cancer type. See Figure EV1 for analyses at a stricter FDR.
- D Enrichment for physical or functional protein–protein interactions in the pan-cancer analysis (55 pairs) or within each cancer type as differential interactions (30 pairs) or other interactions (30 pairs). Error bars denote 95% confidence intervals (** P -value < 1.0E-3).

proteins (~6- to 8-fold) than the interactions detected when considering all cancer types together (Fig 2D, $P < 3.3E-5$; Mann–Whitney test).

Intra-tumor heterogeneity and unrecognized cancer subtypes do not account for the systematic changes in interactions

Mutual exclusivity and co-occurrence between drivers can be caused by epistasis between the drivers, but they can also potentially be caused by the confounders of intra-tumor heterogeneity or unrecognized cancer subtypes. For example, a high level of

intra-tumor heterogeneity in one cancer type could generate false-positive co-occurrence interactions and false-negative mutual exclusive interactions because alterations present in different individual cells within the tumor would wrongly be detected as co-occurring by sequencing. However, if intra-tumor heterogeneity were the cause of the changes in interaction between two cancer types, then the odds ratios of the detected interactions would change in a consistent direction when comparing two cancer types: The ORs should all increase in the more heterogeneous cancer type. This is not the case in our data, with even highly heterogeneous cancers such as glioblastoma having both mutually exclusive and

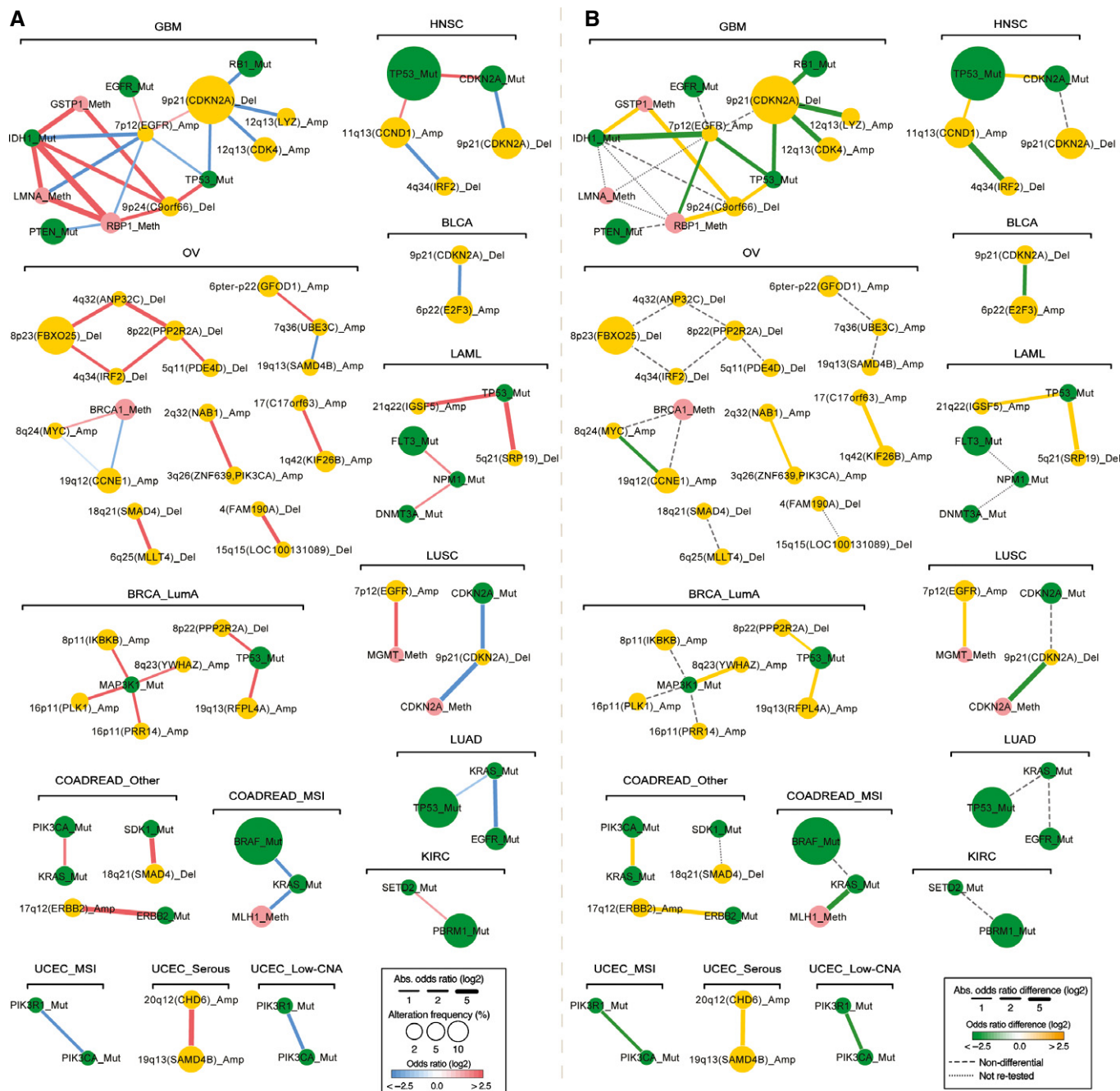


Figure 3. Interaction and differential interaction networks for 14 cancer types.

A In the static network, nodes represent genomic events altered in at least 2% of the samples in each cancer type with their sizes indicating the frequency of alteration and their colors representing the type of alteration. Edge color indicates the interaction type (red: co-occurrence, blue: mutual exclusivity) and width represents the strength of interaction (absolute log of odds ratio).

B In the differential network, edge color corresponds to the type of differential interaction (yellow: higher odds ratio, co-occurrence is significantly stronger in the named cancer type than in another cancer type; green: lower odds ratio, mutual exclusivity is significantly stronger in the named cancer type than in another cancer type; FDR = 0.1). Edge width indicates the strength of differential interaction (absolute difference of the odds ratios between two cancer types). Only the strongest differential odds ratio is shown for each interaction. Cancer types are abbreviated as in Figure 1. All networks were drawn using Cytoscape (Smoot *et al.*, 2011).

co-occurring relationships that are stronger than in other cancer types (Fig 3). Moreover, a similar proportion of differential interactions is detected when comparing between both heterogeneous and non-heterogeneous cancer types (Fig EV4).

In addition to intra-tumor heterogeneity, unrecognized cancer subtypes with subtype-specific driver alterations could also potentially generate false-positive mutual exclusivity and co-occurrence. However, we observe that interactions detected in our analysis are

still observed when only considering samples from cancer subtypes that were not explicitly considered in our original analysis (Fig EV5). In addition, the strong enrichment for interactions between proteins known to physically or functionally interact (Fig 2D) is not consistent with interactions driven by unrecognized subtypes or intra-tumor heterogeneity.

Discussion

In this study, we performed a systematic analysis of co-occurrence and mutual exclusivity between cancer driver alterations in different types of cancer. We found that at least half of the interactions between cancer drivers differ in the strength of interaction in different cancer types. This suggests that how genomic alterations interact cooperatively or partially redundantly to driver cancer varies substantially in different cancers. In some cases, these changes in functional relationships across cell types could be due to differences in the precise alterations affecting each driver. In other cases, however, it is likely to be changes in the molecular interaction networks between cell types—for example, changes in feedback or cross talk (Bernards, 2012; Prahallad *et al*, 2012) or the cellular environment—that underlie the changes in potency and epistasis.

Previously, it has been shown in unicellular organisms that epistatic interactions change quite substantially when comparing between two different environmental conditions (Harrison *et al*, 2007; St Onge *et al*, 2007; Bandyopadhyay *et al*, 2010; Guenole *et al*, 2013). This suggests that extensive re-wiring of epistasis across cell types is likely to be a basic feature of the genetic architecture of complex traits.

The plasticity of epistasis across cell types has important implications for evolution because it allows mutations to alter phenotypic traits in one cell type without necessarily altering traits in other cell types. Moreover, many additional human diseases beyond cancer are caused by mutations in widely expressed housekeeping genes. Although all cells inherit mutated copies of these genes, disease pathology is often limited to a small number of cell types (Lage *et al*, 2008). Our analysis suggests that cell type-specific epistatic interactions will underlie some of the cell type-specific effects of inherited mutations (Fig 4A). Our results also predict that the genetic modifier loci of disease-causing mutations will often differ across cell types, which is important to consider for diseases that affect multiple cell types, tissues, or organs (Fig 4B).

Epistasis is also an important concept in cancer drug discovery, with large-scale screens being performed to identify genes that are synthetic lethal with cancer-associated genomic alterations (Luo *et al*, 2009; Nijman & Friend, 2013). If the plasticity of epistasis that we detected here is also true for synthetic lethal interactions, then our results have an important take-home message for the exploitation of synthetic lethality in cancer therapy, predicting that particular synthetic lethal strategies will often only prove effective in a limited subset of cancers carrying a targeted vulnerability (Fig 4C). Indeed, the available data from large-scale screens and from clinical studies are consistent with this prediction: Synthetic lethal strategies that work *in vitro* in one cell type often fail in another cell type or *in vivo*, and synthetic lethal strategies that are clinically effective in one type of cancer can prove ineffective in a second type (Ashworth *et al*, 2011; Prahallad *et al*, 2012; Lord & Ashworth, 2013). Our

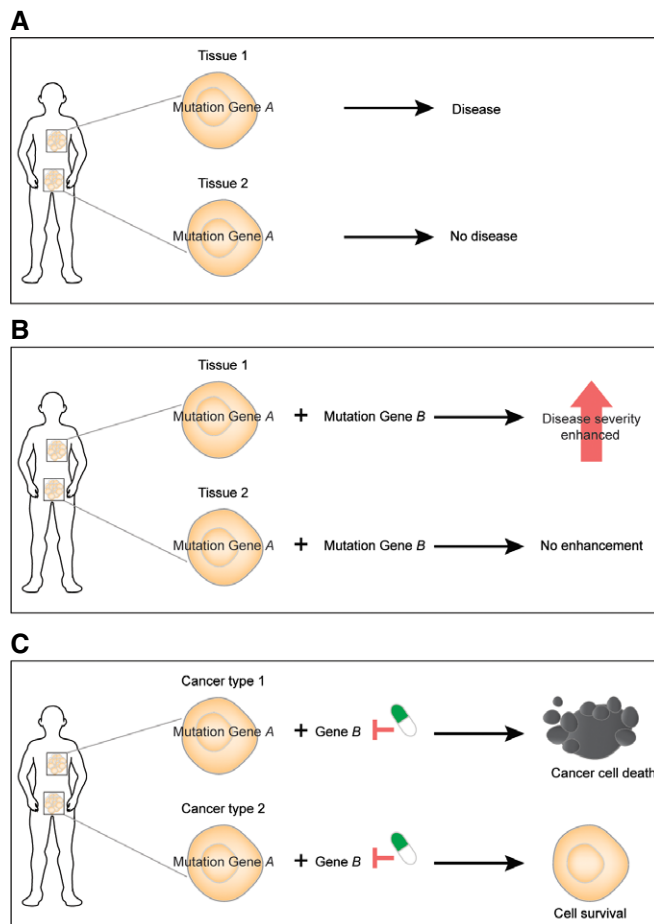


Figure 4. Implications of cell type-specific epistasis for evolution, for other genetic diseases, and for cancer therapy.

- A Mutations in universally expressed housekeeping genes can have cell type-specific effects because of cell type-specific epistasis.
- B The modifier loci of a disease gene will change across cell types.
- C Inhibiting a protein may cause synthetic lethality in combination with a cancer-associated genomic alteration in one type of cancer but fail in another type of cancer.

results suggest that the set of effective synthetic lethal targets for a defined genomic alteration may vary substantially in different types of cancer, and we propose that drug discovery and evaluation programs should be adjusted accordingly.

Materials and Methods

Cancer genome data

We used comprehensive molecular datasets collected across 22 cancer types by the TCGA consortium (Weinstein *et al*, 2013). The number of samples per cancer type varied from 10 (Uterine_Other) to 432 (Ovarian) and the combined dataset comprised 3,164 samples (Table EV1). Hyper-altered samples were excluded (more variant than 3rd quartile + interquartile range \times 4.5) (Kandoth *et al*, 2013a). Molecular subtypes were defined in the respective TCGA studies

(Cancer Genome Atlas Research Network, 2011, 2012a,b, 2014a,b; Brennan *et al.*, 2013; Kandoth *et al.*, 2013b).

Genomic alterations

We considered somatic single nucleotide variants (SNVs), copy number alterations, and DNA methylation events identified by the TCGA consortium (http://cbio.mskcc.org/cancergenomics/pancan_tcga/) (Ciriello *et al.*, 2013). In brief, recurrently mutated genes were identified using the MuSiC (Dees *et al.*, 2012) and MutSig (Banerji *et al.*, 2012) algorithms from whole-exome sequencing data. Somatic mutation calls were assigned to all truncating mutations and to only non-synonymous, single-residue substitutions that existed in hotspots (Ciriello *et al.*, 2013). Copy number alterations were determined using GISTIC and the Firehose pipeline (Mermel *et al.*, 2011) and filtered for functional alterations using the criteria of concordant mRNA expression as previously reported (Ciriello *et al.*, 2013). Levels of DNA methylation were measured as β -values (0, minimal level of DNA methylation; 1, maximal level of DNA methylation), and DNA hypermethylation calls were assigned only to samples with β -values greater than 0.1, filtering for concordant mRNA expression changes. A total of 479 functional alterations, consisting of 199 recurrently mutated genes, 151 copy number losses, 116 copy number gains, and 13 epigenetically silenced genes, were analyzed in this study (Table EV2).

Candidate genes within copy number alterations

To further prioritize individual genes within chromosomal copy number alterations, we analyzed the concordance between mRNA expression level and copy number changes across samples for cancer types that have differential interaction partners. For each region, we classified samples into altered (amplified or deleted) and not altered and tested for a difference in expression using the Mann–Whitney test. mRNA expression data were obtained from cBioportal (Gao *et al.*, 2013) and were log₂-transformed. Genes within chromosomal events were sorted according to the FDR q values (Fig EV6).

Detection of interactions

To determine the significance of the co-occurrence or mutual exclusivity of a pair of functional events, we applied a permutation strategy that controls for the mutational heterogeneity within and across tumor samples. We used the permatswap function in the R package vegan (<http://vegan.r-forge.r-project.org/>) to produce permuted genomic alteration matrices that maintain the total number of alterations for each alteration across samples as well as the total number of alterations per sample, considering copy number alterations, somatic mutations, and DNA hypermethylations as separate classes. We permuted genomic events for each cancer type separately to control for any biases in alteration frequencies in the different cancer types. A total of 10,000 permutations were performed, and the proportion of permutations in which the observed co-occurrence was higher (P_{co}) or lower (P_{me}) than in the real data was taken as an empirical P -value. In the pan-cancer analysis, permutations were also performed within each cancer type separately and then the numbers of co-occurrences were summed across

cancer types. We only tested for interactions between copy number alterations on different chromosomes to avoid the confounding influence of linkage. To correct for multiple hypothesis testing, the minimal P -values of P_{co} and P_{me} were converted to FDR using the method of Benjamini and Hochberg (1995) with the p.adjust function in R.

Analysis of differential interactions

To test whether interactions differ between cancer types, we considered 52 pairs of alterations that were detected as significant interactions in one cancer type and that were also individually altered in at least 2% of the samples of at least one other cancer type. In each cancer type, we quantified the co-occurrence of the two genomic events using a 2×2 contingency table and the odds ratio as follows:

Cancer type i	Altered frequency in Gene 2	Non-altered frequency in Gene 2
Altered frequency in Gene 1	CO_i	B only _{i}
Non-altered frequency in Gene 1	A only _{i}	Neither _{i}

$$\text{Odds ratio}_i = (CO_i \times \text{Neither}_i) / (A \text{ only}_i \times B \text{ only}_i)$$

Cancer type j	Altered frequency in Gene 2	Non-altered frequency in Gene 2
Altered frequency in Gene 1	CO_j	B only _{j}
Non-altered frequency in Gene 1	A only _{j}	Neither _{j}

$$\text{Odds ratio}_j = (CO_j \times \text{Neither}_j) / (A \text{ only}_j \times B \text{ only}_j)$$

0.5 was added to each frequency when calculating odds ratios to avoid division by zero frequencies. We then performed Tarone's test for the heterogeneity of odds ratios (ORs) using the R package metafor (<http://cran.r-project.org/web/packages/metafor/>). To control the mutational heterogeneity between cancer types, we compared the observed Tarone's heterogeneity test statistic (T_{obs}) with the statistic from 10,000 permuted datasets (T_{random}). Permutations were performed as described above, and the proportion of permutations in which T_{random} was greater than T_{obs} was used as an empirical P -value and corrected for multiple hypothesis testing using the method of Benjamini and Hochberg.

Saturation analysis

To explore whether the number of detected interactions is approaching saturation or not, we performed two different saturation analyses: first, down-sampling within each cancer type (only including those with more than 10 detected interactions); and second, down-sampling of the number of different cancer types for the pan-cancer analysis. In the down-sampling within each cancer type, the sizes of subsampling were defined to sample regularly (by adding 10 samples each time) in the interval from 10 tumor samples to the total number of samples within each cancer type, and this process was repeated 10 times. In the down-sampling of the pan-cancer, we added 100 samples each time in the interval from 100 tumor

samples to the final number (3,000) and repeated this process 10 times. To evaluate the effect of adding various different cancer types, we defined 22 random orderings of the 22 cancer types. For each ordering, we sequentially added a different cancer type according to the random order. In each random set, 10,000 permutations were performed.

Functional evaluation of interactions

We compared the interaction networks to physical and functional protein–protein interactions from four different sources: HPRD (Human Protein Reference Database) v.9 (Keshava Prasad *et al*, 2009), an integrated and filtered set of protein–protein interactions (Park *et al*, 2011), STRING (Search Tool for the Retrieval of Interacting Genes/Proteins) v.9 (Franceschini *et al*, 2013), and HumanNet (Human gene functional interaction network) v.1 (Lee *et al*, 2011). HPRD is a manually curated protein–protein interaction database and the integrated and the filtered protein interaction set merges seven existing interaction databases (the Biomolecular Interaction Network Database, the Molecular Interaction Database, the Database of Interacting Proteins, IntAct, BioGRID, Reactome, and the Protein–Protein Interaction Database) after excluding low-confidence protein–protein interaction pairs, as described (Park *et al*, 2011). STRING integrates various biological datasets such as gene expression and high-throughput experiments. We only considered STRING interactions with confidence scores greater than 700 and excluded experimentally validated protein–protein interactions (evidence score of experiment is higher than 400). HumanNet is a probabilistic functional gene network built by integrating 21 different types of evidence. We took gene pairs with an interaction score greater than 2.0. For copy number alterations, genes in the altered regions were reported in a previous study (Ciriello *et al*, 2013). We assigned an edge between two genomic alterations when at least one protein encoded in the first genomic alteration has a physical or functional protein–protein interaction with a protein encoded in the second alteration. To measure the enrichment for protein–protein interactions shown in Figure 2D, we randomly selected the same number of detected interacting pairs from recurrent altered genes (at least 2% of samples from the cancer types) 1,000 times. Enrichment for protein–protein interactions was calculated as follows:

$$\text{Enrichment}_{\text{ppi}} = N_{\text{obs,ppi}} / \text{Average}(N_{\text{random,ppi}})$$

where: $N_{\text{obs,ppi}}$ = total number of protein–protein interactions among the detected pairs; $N_{\text{random,ppi}}$ = total number of protein–protein interactions among the randomly selected pairs.

Change in interaction between two types of cancer

The change in interaction between two types of cancer was quantified as the change in the log of the odds ratio.

Expanded View for this article is available online:
<http://msb.embopress.org>

Acknowledgements

We thank Fran Supek and Jae-Seong Yang for discussions. S.P. was funded by a Postdoctoral Fellowship from Novartis and by the Juan de la Cierva program

(MINECO). Work in the laboratory of B.L. is funded by a European Research Council (ERC) Consolidator Grant (IR-DC, GA616434), Plan Nacional Grant BFU2011-26206 (MINECO), AGAUR (2009 SGR 112), the EMBO Young Investigator Program (MINECO), EU Framework 7 project 277899 4DCellFate, the EMBL-CRG Systems Biology Program, the Severo Ochoa Program, and the AXA Research Fund. The results published in this study are in part based upon data generated by The Cancer Genome Atlas pilot project established by the NCI and NHGRI. Information about TCGA and the investigators and institutions who constitute the TCGA research network can be found at <http://cancergenome.nih.gov/>.

Author contributions

SP performed all analyses. SP and BL designed the study, evaluated the results, and wrote the manuscript.

Conflict of interest

The authors declare that they have no conflict of interest.

References

- Armitage P, Doll R (1954) The age distribution of cancer and a multi-stage theory of carcinogenesis. *Br J Cancer* 8: 1–12
- Ashworth A, Lord CJ, Reis-Filho JS (2011) Genetic interactions in cancer progression and treatment. *Cell* 145: 30–38
- Bandyopadhyay S, Mehta M, Kuo D, Sung MK, Chuang R, Jaehnig EJ, Bodenmiller B, Licon K, Copeland W, Shales M, Fiedler D, Dutkowski J, Guenole A, van Attikum H, Shokat KM, Kolodner RD, Huh WK, Aebersold R, Keogh MC, Krogan NJ *et al* (2010) Rewiring of genetic networks in response to DNA damage. *Science* 330: 1385–1389
- Banerji S, Cibulskis K, Rangel-Escareno C, Brown KK, Carter SL, Frederick AM, Lawrence MS, Sivachenko AY, Sougnez C, Zou L, Cortes ML, Fernandez-Lopez JC, Peng S, Ardlie KG, Auclair D, Bautista-Pina V, Duke F, Francis J, Jung J, Maffuz-Aziz A *et al* (2012) Sequence analysis of mutations and translocations across breast cancer subtypes. *Nature* 486: 405–409
- Benjamini Y, Hochberg Y (1995) Controlling the false discovery rate—a practical and powerful approach to multiple testing. *J R Stat Soc B* 57: 289–300
- Bernards R (2012) A missing link in genotype-directed cancer therapy. *Cell* 151: 465–468
- Brennan CW, Verhaak RG, McKenna A, Campos B, Noushmehr H, Salama SR, Zheng S, Chakravarty D, Sanborn JZ, Berman SH, Beroukhim R, Bernard B, Wu CJ, Genovese G, Shmulevich I, Barnholtz-Sloan J, Zou L, Vegesna R, Shukla SA, Ciriello G *et al* (2013) The somatic genomic landscape of glioblastoma. *Cell* 155: 462–477
- Cancer Genome Atlas Research Network (2011) Integrated genomic analyses of ovarian carcinoma. *Nature* 474: 609–615
- Cancer Genome Atlas Research Network (2012a) Comprehensive molecular characterization of human colon and rectal cancer. *Nature* 487: 330–337
- Cancer Genome Atlas Research Network (2012b) Comprehensive molecular portraits of human breast tumours. *Nature* 490: 61–70
- Cancer Genome Atlas Research Network (2014a) Comprehensive molecular characterization of urothelial bladder carcinoma. *Nature* 507: 315–322
- Cancer Genome Atlas Research Network (2014b) Comprehensive molecular profiling of lung adenocarcinoma. *Nature* 511: 543–550

- Castellano E, Santos E (2011) Functional specificity of ras isoforms: so similar but so different. *Genes Cancer* 2: 216–231
- Ciriello G, Cerami E, Sander C, Schultz N (2012) Mutual exclusivity analysis identifies oncogenic network modules. *Genome Res* 22: 398–406
- Ciriello G, Miller ML, Aksoy BA, Senbabaoglu Y, Schultz N, Sander C (2013) Emerging landscape of oncogenic signatures across human cancers. *Nat Genet* 45: 1127–1133
- Cook PJ, Doll R, Fellingham SA (1969) A mathematical model for the age distribution of cancer in man. *Int J Cancer* 4: 93–112
- Dees ND, Zhang Q, Kandoth C, Wendl MC, Schierding W, Koboldt DC, Mooney TB, Callaway MB, Dooling D, Mardis ER, Wilson RK, Ding L (2012) MuSiC: identifying mutational significance in cancer genomes. *Genome Res* 22: 1589–1598
- Ding L, Wendl MC (2013) Differences that matter in cancer genomics. *Nat Biotechnol* 31: 892–893
- Dixon SJ, Fedysyn Y, Koh JL, Prasad TS, Chahwan C, Chua G, Toufighi K, Baryshnikova A, Hayles J, Hoe KL, Kim DU, Park HO, Myers CL, Pandey A, Durocher D, Andrews BJ, Boone C (2008) Significant conservation of synthetic lethal genetic interaction networks between distantly related eukaryotes. *Proc Natl Acad Sci USA* 105: 16653–16658
- Emadmoghadam D, Weir BA, Au-Yeung G, Alsop K, Mitchell G, George J, Davis S, D'Andrea AD, Simpson K, Hahn WC, Bowtell DD (2013) Synthetic lethality between CCNE1 amplification and loss of BRCA1. *Proc Natl Acad Sci USA* 110: 19489–19494
- Franceschini A, Szklarczyk D, Frankild S, Kuhn M, Simonovic M, Roth A, Lin J, Minguez P, Bork P, von Mering C, Jensen LJ (2013) STRING v9.1: protein-protein interaction networks, with increased coverage and integration. *Nucleic Acids Res* 41: D808–D815
- Gao J, Aksoy BA, Dogrusoz U, Dresdner G, Gross B, Sumer SO, Sun Y, Jacobsen A, Sinha R, Larsson E, Cerami E, Sander C, Schultz N (2013) Integrative analysis of complex cancer genomics and clinical profiles using the cBioPortal. *Sci Signal* 6: p11
- Guenole A, Srivas R, Vreeken K, Wang ZZ, Wang S, Krogan NJ, Ideker T, van Attikum H (2013) Dissection of DNA damage responses using multiconditional genetic interaction maps. *Mol Cell* 49: 346–358
- Harrison R, Papp B, Pal C, Oliver SG, Delneri D (2007) Plasticity of genetic interactions in metabolic networks of yeast. *Proc Natl Acad Sci USA* 104: 2307–2312
- Hartwell LH, Szankasi P, Roberts CJ, Murray AW, Friend SH (1997) Integrating genetic approaches into the discovery of anticancer drugs. *Science* 278: 1064–1068
- Kandoth C, McLellan MD, Vandin F, Ye K, Niu B, Lu C, Xie M, Zhang Q, McMichael JF, Wyczalkowski MA, Leiserson MD, Miller CA, Welch JS, Walter MJ, Wendl MC, Ley TJ, Wilson RK, Raphael BJ, Ding L (2013a) Mutational landscape and significance across 12 major cancer types. *Nature* 502: 333–339
- Kandoth C, Schultz N, Cherniack AD, Akbani R, Liu Y, Shen H, Robertson AG, Pashtan I, Shen R, Benz CC, Yau C, Laird PW, Ding L, Zhang W, Mills GB, Kucherlapati R, Mardis ER, Levine DA (2013b) Integrated genomic characterization of endometrial carcinoma. *Nature* 497: 67–73
- Keshava Prasad TS, Goel R, Kandasamy K, Keerthikumar S, Kumar S, Mathivanan S, Telikicherla D, Raju R, Shafreen B, Venugopal A, Balakrishnan L, Marimuthu A, Banerjee S, Somanathan DS, Sebastian A, Rani S, Ray S, Harrys Kishore CJ, Kanth S, Ahmed M *et al* (2009) Human Protein Reference Database–2009 update. *Nucleic Acids Res* 37: D767–D772
- Lage K, Hansen NT, Karlberg EO, Eklund AC, Roque FS, Donahoe PK, Szallasi Z, Jensen TS, Brunak S (2008) A large-scale analysis of tissue-specific pathology and gene expression of human disease genes and complexes. *Proc Natl Acad Sci USA* 105: 20870–20875
- Land H, Parada LF, Weinberg RA (1983) Tumorigenic conversion of primary embryo fibroblasts requires at least two cooperating oncogenes. *Nature* 304: 596–602
- Laufer C, Fischer B, Billmann M, Huber W, Boutros M (2013) Mapping genetic interactions in human cancer cells with RNAi and multiparametric phenotyping. *Nat Methods* 10: 427–431
- Lee I, Blom UM, Wang PI, Shim JE, Marcotte EM (2011) Prioritizing candidate disease genes by network-based boosting of genome-wide association data. *Genome Res* 21: 1109–1121
- Lehner B (2011) Molecular mechanisms of epistasis within and between genes. *Trends Genet* 27: 323–331
- Lord CJ, Ashworth A (2013) Mechanisms of resistance to therapies targeting BRCA-mutant cancers. *Nat Med* 19: 1381–1388
- Luo J, Solimini NL, Elledge SJ (2009) Principles of cancer therapy: oncogene and non-oncogene addiction. *Cell* 136: 823–837
- Mermel CH, Schumacher SE, Hill B, Meyerson ML, Beroukhim R, Getz G (2011) GISTIC2.0 facilitates sensitive and confident localization of the targets of focal somatic copy-number alteration in human cancers. *Genome Biol* 12: R41
- Nijman SM, Friend SH (2013) Cancer. Potential of the synthetic lethality principle. *Science* 342: 809–811
- Nordling CO (1953) A new theory on cancer-inducing mechanism. *Br J Cancer* 7: 68–72
- Park S, Yang JS, Shin YE, Park J, Jang SK, Kim S (2011) Protein localization as a principal feature of the etiology and comorbidity of genetic diseases. *Mol Syst Biol* 7: 494
- Prahalad A, Sun C, Huang S, Di Nicolantonio F, Salazar R, Zecchin D, Beijersbergen RL, Bardelli A, Bernards R (2012) Unresponsiveness of colon cancer to BRAF(V600E) inhibition through feedback activation of EGFR. *Nature* 483: 100–103
- Roguev A, Bandyopadhyay S, Zofall M, Zhang K, Fischer T, Collins SR, Qu H, Shales M, Park HO, Hayles J, Hoe KL, Kim DU, Ideker T, Grewal SI, Weissman JS, Krogan NJ (2008) Conservation and rewiring of functional modules revealed by an epistasis map in fission yeast. *Science* 322: 405–410
- Ruley HE (1983) Adenovirus early region 1A enables viral and cellular transforming genes to transform primary cells in culture. *Nature* 304: 602–606
- Smoot ME, Ono K, Ruscheinski J, Wang PL, Ideker T (2011) Cytoscape 2.8: new features for data integration and network visualization. *Bioinformatics* 27: 431–432
- St Onge RP, Mani R, Oh J, Proctor M, Fung E, Davis RW, Nislow C, Roth FP, Giaever G (2007) Systematic pathway analysis using high-resolution fitness profiling of combinatorial gene deletions. *Nat Genet* 39: 199–206
- Tischler J, Lehner B, Fraser AG (2008) Evolutionary plasticity of genetic interaction networks. *Nat Genet* 40: 390–391
- Vogelstein B, Kinzler KW (2004) Cancer genes and the pathways they control. *Nat Med* 10: 789–799
- Weinstein JN, Collisson EA, Mills GB, Shaw KR, Ozenberger BA, Ellrott K, Shmulevich I, Sander C, Stuart JM (2013) The Cancer Genome Atlas Pan-Cancer analysis project. *Nat Genet* 45: 1113–1120

Zack TI, Schumacher SE, Carter SL, Cherniack AD, Saksena G, Tabak B, Lawrence MS, Zhang CZ, Wala J, Mermel CH, Sougnez C, Gabriel SB, Hernandez B, Shen H, Laird PW, Getz G, Meyerson M, Beroukhi R (2013) Pan-cancer patterns of somatic copy number alteration. *Nat Genet* 45: 1134–1140

Zhao L, Vogt PK (2008) Helical domain and kinase domain mutations in p110alpha of phosphatidylinositol 3-kinase induce gain of function by different mechanisms. *Proc Natl Acad Sci USA* 105: 2652–2657

Zhu CT, Ingelmo P, Rand DM (2014) GxGxE for lifespan in *Drosophila*: mitochondrial, nuclear, and dietary interactions that modify longevity. *PLoS Genet* 10: e1004354



License: This is an open access article under the terms of the Creative Commons Attribution 4.0 License, which permits use, distribution and reproduction in any medium, provided the original work is properly cited.