



Erratum: Correction of Figure

Clinical Implications of Various Criteria for the Biochemical Diagnosis of Insulinoma

Chang Ho Ahn, Lee-Kyung Kim, Jie Eun Lee, Chan-Hyeon Jung, Se-Hee Min, Kyong Soo Park, Seong Yeon Kim, Young Min Cho

Department of Internal Medicine, Seoul National University College of Medicine, Seoul, Korea

Endocrinol Metab 2014;29:498-504
<http://dx.doi.org/10.3803/EnM.2014.29.4.498>

In the original article, the legend of Fig. 1 was incorrect. The solid line was noninsulinoma, and the dotted line was insulinoma. The correct figure is as following.

We apologize for any inconvenience that this may have caused.

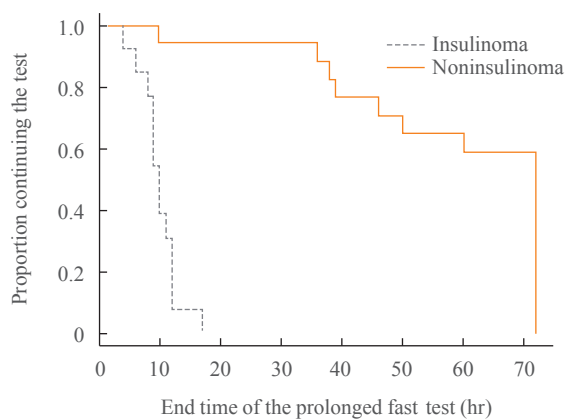


Fig. 1. Proportion of patients by time to discontinuation of the prolonged fast test.

Corresponding author: Young Min Cho
Department of Internal Medicine, Seoul National University College of Medicine, 101 Daehak-ro, Jongno-gu, Seoul 03080, Korea
Tel: +82-2-2072-1965, **Fax:** +82-2-762-9662, **E-mail:** ymchomd@snu.ac.kr

Copyright © 2017 Korean Endocrine Society
This is an Open Access article distributed under the terms of the Creative Commons Attribution Non-Commercial License (<http://creativecommons.org/licenses/by-nc/4.0/>) which permits unrestricted non-commercial use, distribution, and reproduction in any medium, provided the original work is properly cited.