

## Research Article

# Identification and Validation of a Hypoxia-Immune-Based Prognostic mRNA Signature for Oral Squamous Cell Carcinoma

Shaohua Lv,<sup>1,2</sup> Zhipeng Qian,<sup>3</sup> Jianhao Li,<sup>1</sup> Songlin Piao,<sup>1</sup> and Jichen Li <sup>1,2</sup>

<sup>1</sup>Department of Oral and Maxillofacial Surgery, The First Affiliated Hospital of Harbin Medical University, Harbin 150081, China

<sup>2</sup>Stomatology School, Harbin Medical University, 143 Yiman Street, Nangang District, Harbin, Heilongjiang, China

<sup>3</sup>College of Bioinformatics Science and Technology, Harbin Medical University, Harbin, China

Correspondence should be addressed to Jichen Li; [lijichen@163.com](mailto:lijichen@163.com)

Received 20 September 2021; Revised 22 November 2021; Accepted 20 December 2021; Published 7 February 2022

Academic Editor: Jincheng Guo

Copyright © 2022 Shaohua Lv et al. This is an open access article distributed under the Creative Commons Attribution License, which permits unrestricted use, distribution, and reproduction in any medium, provided the original work is properly cited.

**Background.** Oral squamous cell carcinoma (OSCC) is a commonly encountered head and neck malignancy. Increasing evidence shows that there are abnormal immune response and chronic cell hypoxia in the development of OSCC. However, there is a lack of a reliable hypoxia-immune-based gene signature that may serve to accurately prognosticate OSCC. **Methods.** The mRNA expression data of OSCC patients were extracted from the TCGA and GEO databases. Hypoxia status was identified using the t-distributed Stochastic Neighbor Embedding (t-SNE) algorithm. Both ESTIMATE and single-sample gene-set enrichment analysis (ssGSEA) were used for further evaluation of immune status. The DEGs in different hypoxia and immune status were determined, and univariate Cox regression was used to identify significantly prognostic genes. A machine learning method, least absolute shrinkage and selection operator (LASSO) Cox regression analysis, allowed us to construct prognostic gene signature to predict the overall survival (OS) of OSCC patients. **Results.** A total of 773 DEGs were identified between hypoxia high and low groups. According to immune cell infiltration, patients were divided into immune high, medium, and low groups and immune-associated DEGs were identified. A total of 193 overlapped DEGs in both immune and hypoxia status were identified. With the univariate and LASSO Cox regression model, eight signature mRNAs (FAM122C, RNF157, RANBP17, SOWAHA, KIAA1211, RIPPLY2, INSL3, and DNAH1) were selected for further calculation of their respective risk scores. The risk score showed a significant association with age and perineural and lymphovascular invasion. In the GEO validation cohort, a better OS was observed in patients from the low-risk group in comparison with those in the high-risk group. High-risk patients also demonstrated different immune infiltration characteristics from the low-risk group and the low-risk group showed potentially better immunotherapy efficacy in contrast to high-risk ones. **Conclusion.** The hypoxia-immune-based gene signature has prognostic potential in OSCC.

## 1. Introduction

The incidence of lip and oral cavity cancers has been on the rise, with an estimated 246,420 cases and 119,693 deaths occurring globally in 2018 [1]. Oral squamous cell carcinoma (OSCC) is the dominating subtype of oral cancer, which unfortunately harbors a dismal 5-year survival rate [2]. There is still an urgent need to discover accurate prognostic biomarkers and effective drug targets for OSCC.

Solid tumors such as OSCC are usually characterized by cellular hypoxia, which is generally considered to be a

manifestation of poor prognosis [3, 4]. Cell hypoxia has evolved to represent a significant feature in cancer [5]. Hypoxic conditions could trigger the migration and invasion of OSCC cells [6–8]. Reports also suggest that hypoxia can induce epithelial to mesenchymal transition (EMT) in several types of cancer, including OSCC [9]. It can also stimulate angiogenesis through the activation of proangiogenic factors [10]. Zhang et al. reported that the expression of HIF-1 $\alpha$ , Glut-1, and CA9 can predict malignant transformation to OSCC [11]. It is undeniable that cellular hypoxia contributes significantly to the malignant properties of OSCC.

The immune system is crucial in OSCC tumorigenesis, progression, and prognosis [12–14]. Enhanced PD-1 and PD-L1 expressions were observed in OSCC patient serum and tissue samples [15]. Premalignant lesions were also found to harbor raised PD-L1 expressions [16]. Inhibiting the PD-1/PD-L1 axis is one of the most promising means to activate antitumor immunity [17]. A number of immune-related prognostic biomarkers have been identified in OSCC. Meehan et al. had previously constructed an immune-related signature that correlated with OSCC patient prognosis [18]. Some immune checkpoints have been documented to be closely related to poorer patient outcomes in OSCC [19]. One of them is the CTSG gene, which is an immune-related gene and has been identified as an independent biomarker and therapeutic target of OSCC [20]. Although these immune-related prognostic biomarkers have been discovered, few studies have explored the potential benefit of a combined assessment of both immunological characteristics and the hypoxic microenvironment in OSCC [21].

Several studies have alluded to the clinical significance of potential interactions between immune function and cellular hypoxia across various malignancies [22, 23]. Computational framework for prognosis assessment for cancer patients has been widely used in various tumors [24–27]. Although some hypoxia-related and immune-related models have been constructed to predict the prognosis of OSCC [28, 29], a reliable hypoxia-immune-integrated prognostic gene signature has not yet been established for OSCC. Here, we first accessed the mRNA expression profiles of OSCC patients from the TCGA database. Cell hypoxia was identified using the t-SNE algorithm, while the immune status and immune-related DEGs were identified using the ESTIMATE and ssGSEA algorithms. DEGs that were significant in both immune and cellular hypoxia phenomena were identified. This pool of genes was then subjected to a machine learning assessment to discern those which were potentially prognostic. We successfully constructed a hypoxia-immune-based gene signature that was useful in predicting the overall survival (OS) of OSCC patients.

## 2. Materials and Methods

**2.1. Data Collection and Preprocessing.** The discovery cohort included 303 OSCC individual data from the “TCGA-HNSC” project in The Cancer Genome Atlas (TCGA). The Genomic Data Commons (available at <https://portal.gdc.cancer.gov>) database was then accessed to extract the corresponding gene expression data. In this study, samples without data on the survival state and survival time were eliminated. Data were externally validated using an independent cohort. The expression profile of GSE41613 was downloaded from the Gene Expression Omnibus (<http://www.ncbi.nlm.nih.gov/geo/>) based on the GPL570 Affymetrix Human Genome U133 Plus 2.0 Array platform. A total of 97 OSCC patient data were included in this validated study. The IMvigor210 ( $n=348$ ) cohort with immunotherapy data and corresponding clinicopathological information was obtained from the IMvigor210CoreBiologies R package.

RNA-sequencing data (FPKM values) extracted from the TCGA database were translated into transcripts per kilobase million (TPM) values and normalized using  $\log_2$  (TPM + 1). Raw GEO database-derived data were obtained using the RMA algorithm. Background adjustment, quantile normalization, and final summation of oligonucleotides per transcript were carried out using the median Polish algorithm of the Affy software package. Finally, the different probe IDs were converted into their respective gene symbols to annotate them, and the repeated gene expression values were averaged. All patients with included clinical information and survival data were also incorporated in this study.

**2.2. Identification of Hypoxia Status and Hypoxia-Related Differentially Expressed Genes (DEGs).** The presence of cell hypoxia was determined using the t-distributed Stochastic Neighbor Embedding (t-SNE) algorithm. This nonparametric, unsupervised method was able to distinguish between patient clusters based on provided hallmarks or signatures. Based on the seven hypoxic signatures of Buffa, Elvidge, Eustace, Hu, Ragnum, Sorensen, and Winter [30], a nonlinear dimensionality reduction algorithm t-SNE was used to measure the Euclidean distance of any two patients in the TCGA cohort, which was then condensed into two-dimensional points. Three clusters were identified. Moreover, we obtained genes using the KEGG HIF-1 signaling pathway (<https://www.kegg.jp/>; ID:04066) to assess the hypoxic status. Of these genes, 14 were identified as “increased oxygen delivery” genes and 12 were identified as “reduced oxygen consumption” genes. Finally, the “DESeq2” software package was used to discern between DEGs significant to low- or high-hypoxic groups ( $P$ -value  $<0.05$  and  $|\log_2$  (fold change)  $>1$ ).

**2.3. Identification of Immune Status and Immune-Related DEGs.** We evaluated enrichment degrees of a total of 28 immune cells within each TCGA OSCC sample using the ssGSEA method. The OSCC samples were arbitrarily divided into high-, medium-, and low-immune groups using hierarchical clusters (namely, “Immune\_Low,” “Immune\_Medium,” and “Immune\_High”) based on the above immune matrix. Both degrees of immunocyte infiltration degree (immune score) and stromal level (stromal score) were assessed using the Estimation of Stromal and Immune cells in Malignant Tumor tissues using Expression data (ESTIMATE) algorithm in TCGA OSCC samples to validate the above immune status grouping. The immune-related DEGs between the Immune\_Low group and the Immune\_High group were identified by the “DESeq2” software package using similar parameters as in the cell hypoxia analysis. The Metascape (<https://metascape.org/>) database was used to construct GO and KEGG enrichment pathways of the selected DEGs.

**2.4. Construction and Verification of Prognostic Signatures Related to Hypoxia and Immune Status.** We took the intersection between hypoxia- and immune-related

differentially expressed genes (DEGs) and selected those overlapped genes for subsequent analysis. First, using the “survival” package in R, we employed univariate Cox regression on these overlapped genes and overall survival (OS) of OSCC in the TCGA to identify survival-related hypoxia-immune-related DEGs. Those with a  $P < 0.05$  were considered as significant. Then, using the “glmnet” package in R, the Least Absolute Shrinkage and Selection Operator (LASSO) Cox regression model was applied to select the optimal variables from all identified hypoxia-immune-related prognostic DEGs in the discovery cohort. LASSO is a kind of linear regression that uses shrinkage and can be applied to high-dimensional data. In this study, fivefold cross-validation was employed to select the minimal penalty term ( $\lambda$ ). All patients were then subjected to a risk score calculation as follows:

$$\text{risk score} = \sum (\text{coefficient} * \text{expression of the signature gene}).$$

The risk score was defined as the sum of the product of the prognostic signature gene expression levels and the corresponding LASSO model-derived coefficients. The optimal cut point was determined by a method of maximally selected rank statistics based on an individual level risk score to further refine a means to stratify patients with OSCC according to their prognosis.

**2.5. Relationship between Risk Scores and the Immune Microenvironment of OSCC.** Profiles of 22 immune cell infiltration were determined in both the low- and high-risk groups using the CIBERSORT algorithm. Using gene expression data, the CIBERSORT is a deconvolution algorithm specifically designed to evaluate cellular composition in tissues. In addition, two immune checkpoints (CTLA-4 and PD-1), APM, CYT, TILs, and TIS allowed for further analysis of the relationship between the low- and high-risk groups.

The major histocompatibility complex (MHC) molecules were subjected to relative antigen presentation mechanism (APM) calculation. The degree of immune cytotoxic activity (CYT) based on granzyme A (GZMA) and perforin-1 (PRF1), both of which are related to CD8 + T cell activation, was calculated on previously reported formulas. Tumor prognosis is known to be associated with the density of T cells tumor infiltration. The proportion of tumor-infiltrating lymphocytes (TILs) was calculated. Lastly, we used the tumor inflammation signature (TIS), which represents a commonly used 18-gene signature in research, to quantify background adaptive immune responses, which are normally inhibited in tumors. The TIS score was derived in terms of the mean of  $\log_2$ -FPKM gene expression of the selected marker genes.

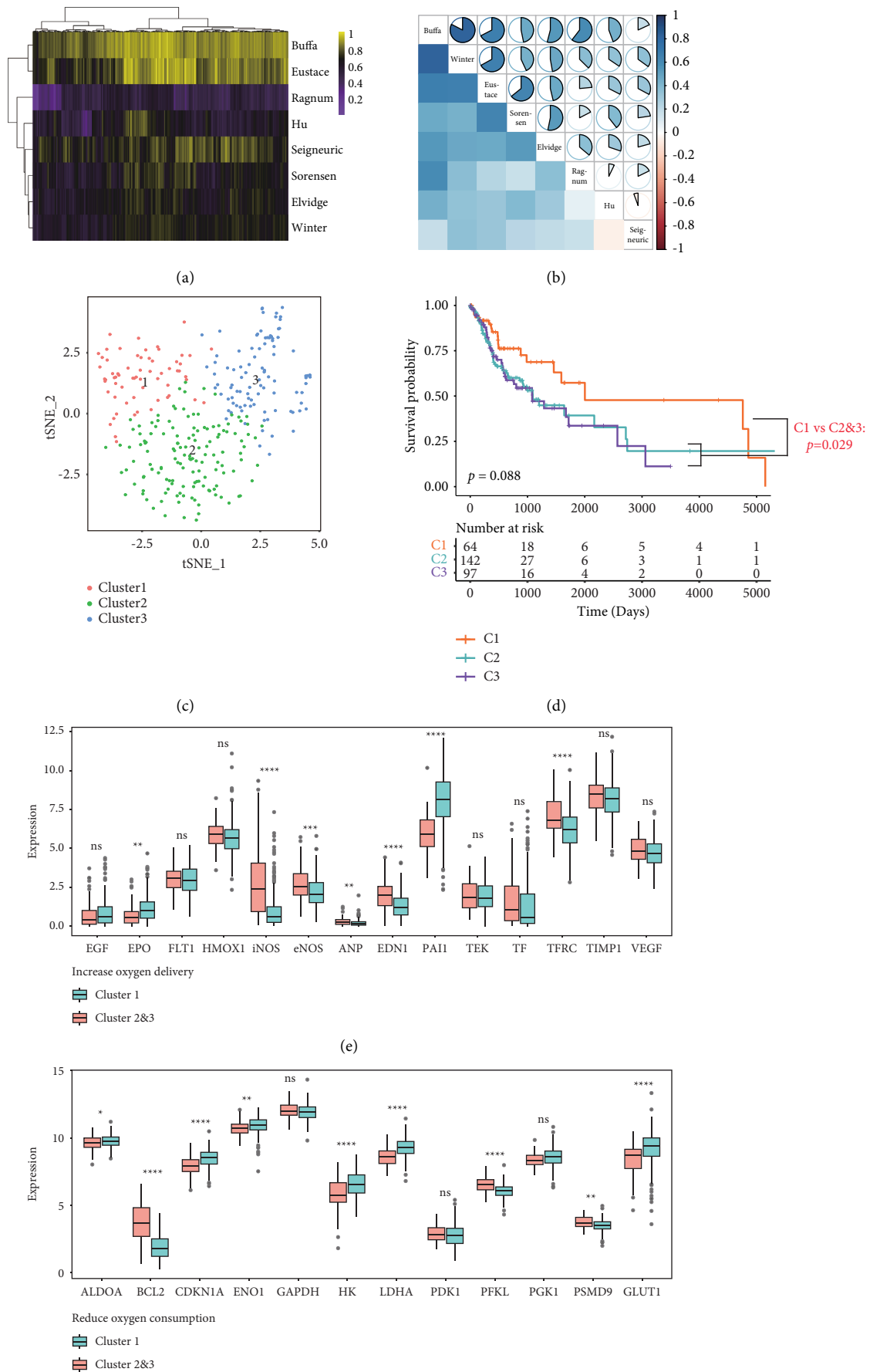
**2.6. Statistical Analysis.** The R version 3.6.1 and its related packages were used to carry out all data analyses. The t-SNE algorithm was performed using the “Rtsne” of the R package on the basis of nonlinear dimensionality reduction. The “estimate” package was used to determine immune scores. The “glmnet” package was used to carry out LASSO Cox

regression modeling. To identify independent risk factors for survival, univariate and multivariate Cox regression analyses were employed after the adjustment of covariates. The “survival” package was used to perform the Cox regression model and Kaplan–Meier analyses. A  $P$  value of  $< 0.05$  suggested that the results were statistically significant.

### 3. Results

**3.1. Hypoxia Status and Hypoxia-Related DEGs in OSCC.** In the TCGA cohort, cell hypoxia status was evaluated using ssGSEA analysis based on eight hypoxia signatures (Buffa, Elvidge, Eustace, Hu, Ragnum, Seigneuric, Sorensen, and Winter) [30] (Figure 1(a)). Based on the quantitative score of each hypoxia signature, we found that the “Seigneuric” signature had the lowest correlation with the others and was therefore not included in this study (Figure 1(b)). The remaining seven gene signatures were used in the nonlinear dimensionality reduction algorithm calculation of two-dimensional points between any two patients (see Methods for details). As shown in Figure 1(c), three clusters of patients were identified, and each patient was assigned to their nearest cluster. A total of 64, 142, and 97 cases were classified into Cluster 1, Cluster 2, and Cluster 3. There was no significant difference in terms of patient survival among the three clusters (log-rank test,  $P = 0.088$ ) (Figure 1(d)). However, there was a significant difference when comparing Cluster 1 with Cluster 2 and Cluster 3 (log-rank test,  $P = 0.029$ ). Clusters 2 and 3 were then combined for further comparison against Cluster 1, which appeared to possess the most favorable overall survival outcome. Clusters 2 and 3 may differ from Cluster 1 in terms of the degree of cellular hypoxia. We further explored differences in expressions of KEGG HIF-1 pathway molecules between the two new clusters (Cluster 1 versus Clusters 2 and 3). The resultant identified genes were classified as being involved in “reduced oxygen consumption” (12 genes) or “increased oxygen delivery” (14 genes). Of those 14 genes involved in increased oxygen delivery, 11 (78.57%) were found to be overexpressed in Clusters 2 and 3 compared with those in Cluster 1 (Figure 1(e)). Seven of the 12 genes related to reduced oxygen consumption (58.33%) were noted to be overexpressed in Clusters 2 and 3 (Figure 1(f)). We therefore proved that both these clusters were of different cell hypoxia status. Patients in Clusters 2 and 3 and Cluster 1 were then renamed to Hypoxia\_High or Hypoxia\_Low groups, respectively. A total of 773 DEGs were then identified using the DESeq2 package between the Hypoxia\_High and Hypoxia\_Low groups. Of these genes, 220 were upregulated, whereas 553 were downregulated (Figures 1(g) and 1(h)).

**3.2. Immune Status and Immune-Related DEGs in OSCC.** Based on the proportions of 28 immune cells quantified by ssGSEA, OSCC samples in the TCGA database were classified into high-, medium-, and low-immune groups (named Immune\_High, Immune\_Medium and Immune\_Low, resp. (Figure 2(a))). In accordance with calculations using the ESTIMATE approach, both immune and stromal scores of



(f)  
FIGURE 1: Continued.

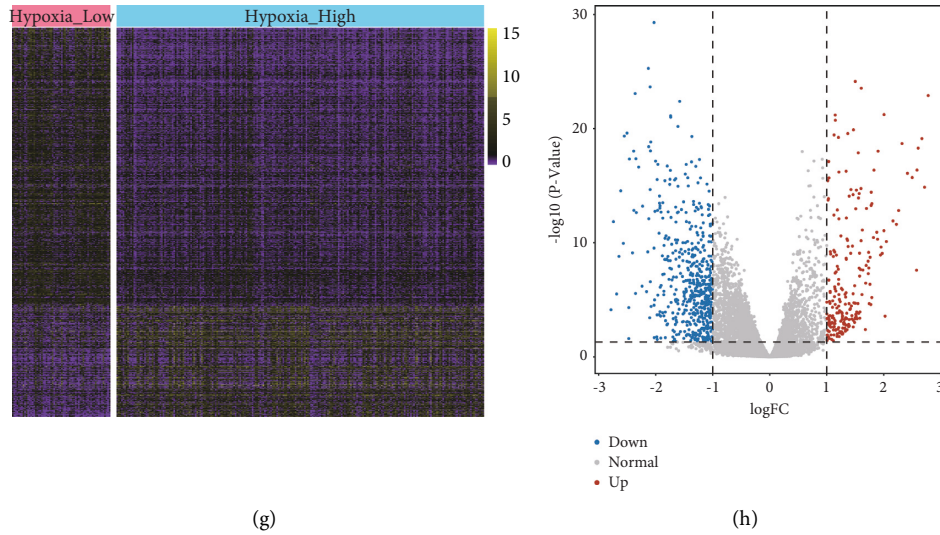


FIGURE 1: Identification of hypoxia status and hypoxia-associated DEGs. Quantified heatmap (a) and correlation heatmap (b) calculated by ssGSEA with respect to the eight hypoxia signature sets. (c) Dot plot of three distinct clusters determined using the t-SNE algorithm to analyze 7 hypoxia signature gene sets. (d) Overall survival as shown by the Kaplan–Meier plot for patients in three clusters. (e), (f) HIF-1 KEGG pathway gene expression changes based on hypoxia status (Hypoxia\_High versus Hypoxia\_Low). Heatmap (g) and volcano plot (h) show the differentially expressed hypoxia-related genes in oral squamous cell carcinoma (OSCC). Red dots represent upregulated DEGs, blue dots represent downregulated DEGs, and gray dots represent genes with no differential expression.

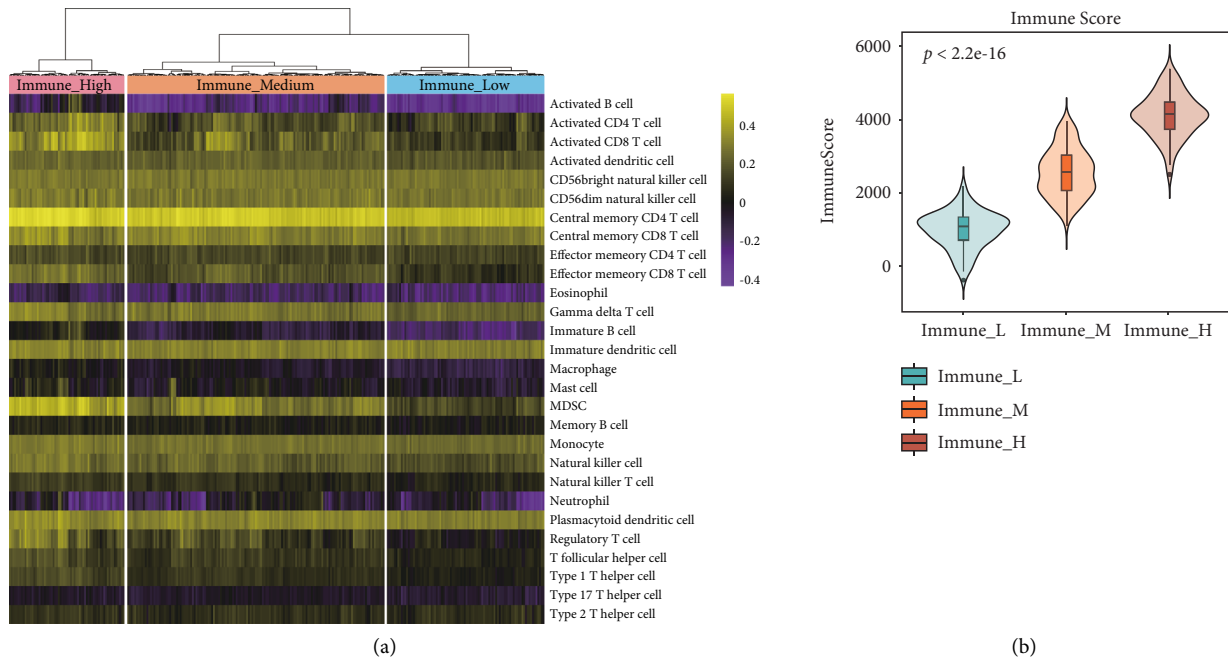


FIGURE 2: Continued.

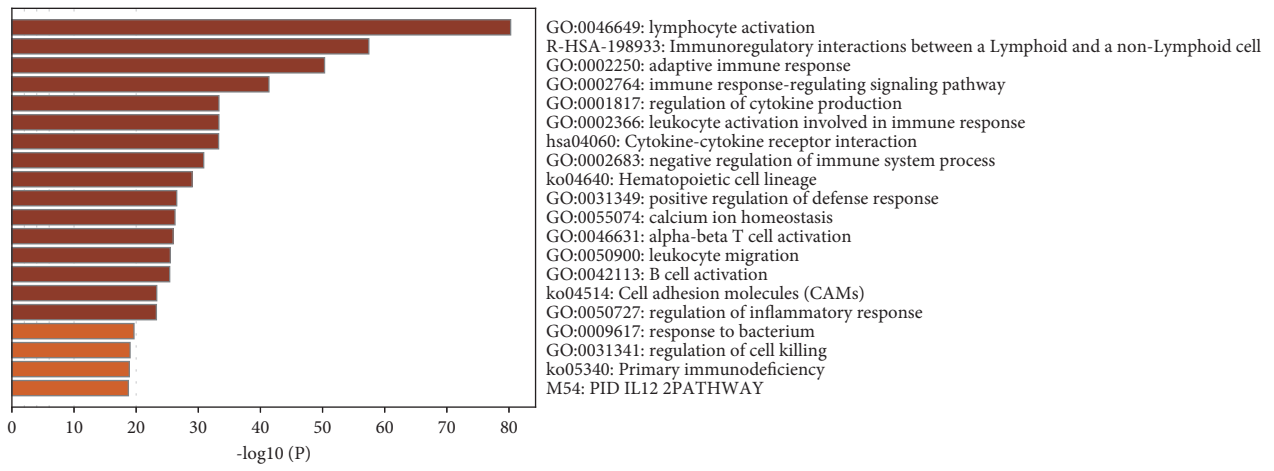
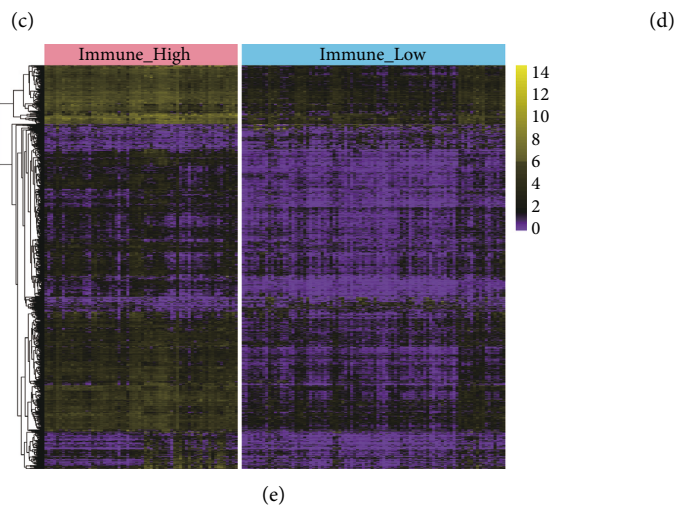
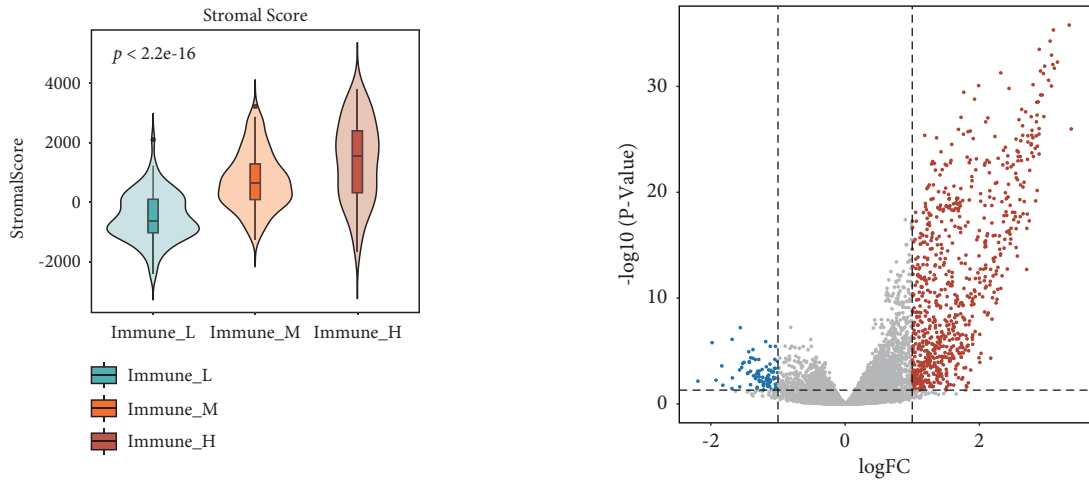
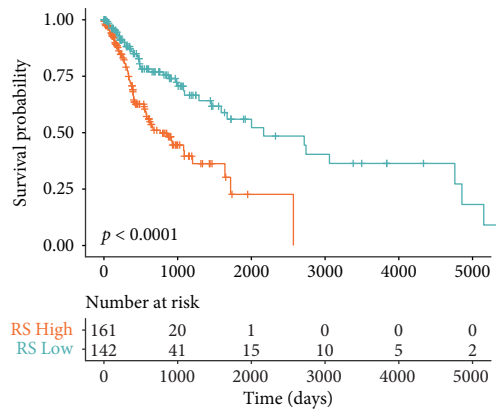
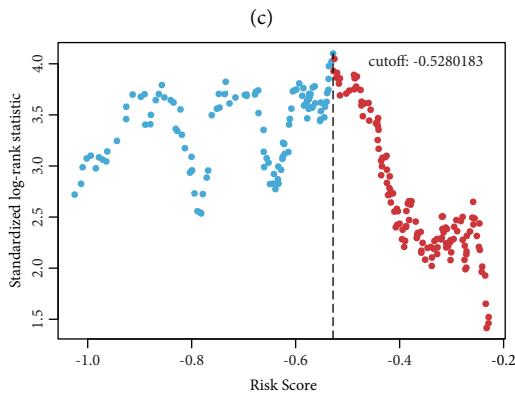
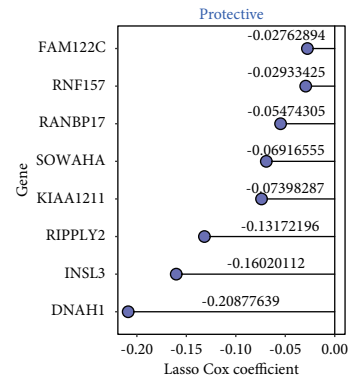
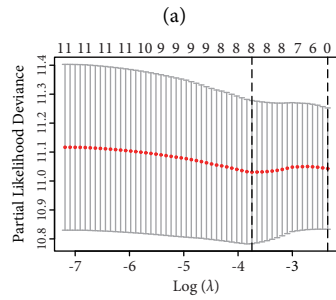
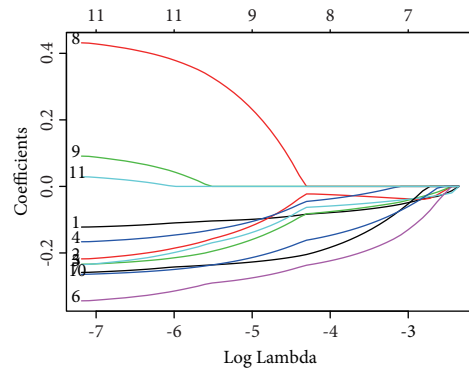
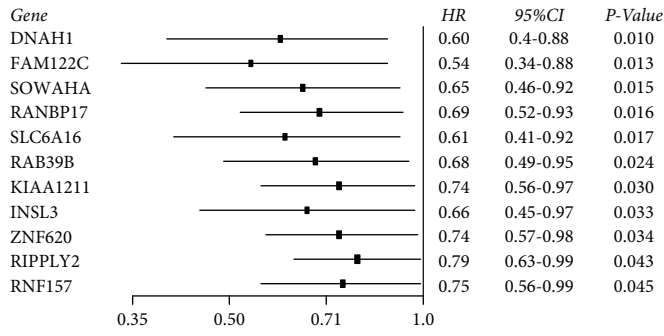


FIGURE 2: Identification of immune status and immune-associated DEGs. (a) Data from the TCGA database were classified into three subtypes (Immune\_High group, Immune\_Medium group, and Immune\_Low group) based on immune status. Comparison of Immune\_High and Immune\_Low groups in terms of (b) immune score and (c) stromal score. (d) Volcano plot and (e) heatmap depicting DEGs between Immune\_High and Immune\_Low groups. Red dots represent upregulated DEGs, blue dots represent downregulated DEGs, and gray dots represent genes with no differential expression. Bar plot (f) of functional enrichment analysis of immune-related DEGs.



(e)

(f)

FIGURE 3: Continued.

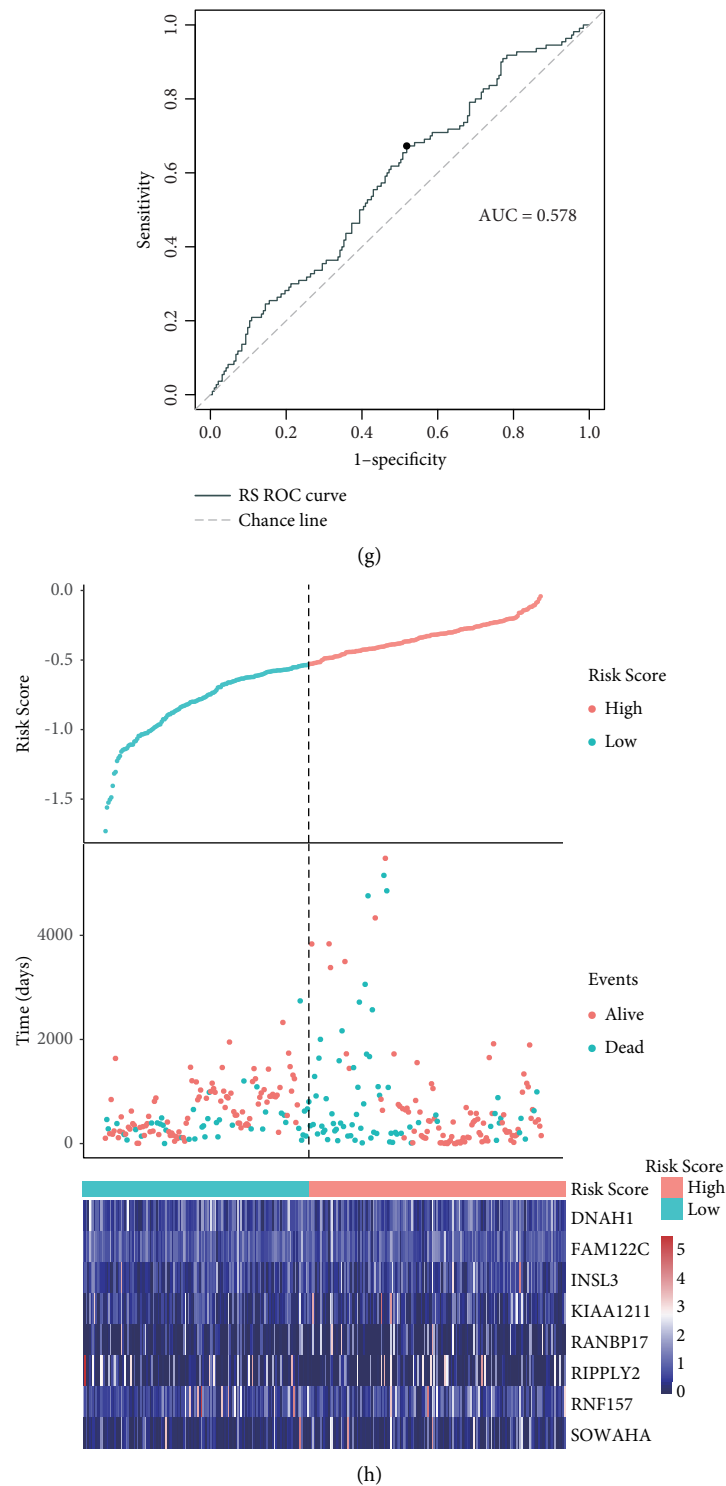


FIGURE 3: The construction of hypoxia-immune-based mRNA prognosis model. (a) Hazard ratios for 11 hypoxia-immune-associated prognostic mRNAs. (b) LASSO coefficient profiles. (c) The LASSO model is used to choose the tuning parameter ( $\lambda$ ) using fivefold cross-validation based on minimum criteria for OS; average OS genes are represented by the upper  $x$ -axis, and  $\log(\lambda)$  is represented by the lower  $x$ -axis. Partial likelihood deviance error is represented by the  $y$ -axis. (d) An ensemble of 8 genes with their respective individual coefficients. (e) Scatter plot illustrates standardized log-rank statistic value for each corresponding cutoff of hypoxia-immune-based risk score. The optimal cutoff with the maximum standard log-rank statistic is marked with a vertical dashed line. (f) Kaplan–Meier plot of overall survival for patients in low-risk and high-risk groups by hypoxia-immune-based prognosis classifier in the discovery cohort. (g) The effectiveness of the risk scores is predicted using the ROC curve. (h) Expression profiles, survival status, and risk score distributions of the gene signature.



the Immune\_High group were elevated in contrast to those of the Immune\_Low group (Figures 2(b) and 2(c)). Comparisons between high- and low-immune groups revealed 854 immune-related DEGs (Figures 2(d) and 2(e)), which were subjected to Metascape tool functional enrichment analysis. The identified DEGs were predominately involved in immune response processes such as “lymphocyte activation,” “adaptive immune response,” “leukocyte activation involved immune response,” and “immunoregulatory interactions between a Lymphoid and a non-Lymphoid cell” (Figure 2(f)).

**3.3. Development and Validation of the Risk Score.** A total of 193 mRNAs were significant in both hypoxia- and immune-related genes. Eleven of these mRNAs were associated with OS ( $P < 0.05$ ) according to univariate Cox regression analysis (Figure 3(a)). Of these, a total of 8 mRNA signatures were selected by the LASSO Cox regression model (Figures 3(b) and 3(c)). All the 8 mRNAs were protective against OSCC (Figure 3(d)). Subsequent risk scores were derived from the following equation: risk score = [DNAH1 expression \* (-0.20877639)] + [FAM122C expression \* (-0.02762894)] + [INSL3 expression \* (-0.16020112)] + [KIAA1211 expression \* (-0.07398287)] + [RANBP17 expression \* (-0.05474305)] + [RIPPLY2 expression \* (-0.13172196)] + [RNF157 expression \* (-0.02933425)] + [SOWAHA expression \* (-0.06916555)]. Using this formula, patients were stratified into either low- or high-risk groups. The method of maximally selected rank statistics was used to determine the optimal risk score cutoff (Figure 3(e)). Significantly improved survival was observed in those in the low-risk group compared to their high-risk counterparts (log-rank test,  $p < 0.001$ ) (Figure 3(f)). The ROC curve showed that the classifier had relatively strong predictive power in the TCGA cohort, with a value of 0.578 for the area under the curve (AUC) (Figure 3(g)). Furthermore, the TCGA cohort was also analyzed for distribution of selected gene expressions and risk scores as well as survival status (Figure 3(h)). Table 1 depicts all relevant clinical parameters.

To further explore the efficacy of the constructed risk score, we performed validation tests using the GEO cohort. Using the method of maximally selected rank statistics, all OSCC patients in the GEO cohort were divided (Figure 4(a)). Comparison of survival showed that improved survival rates were experienced by low-risk patients in contrast to high-risk patients (log-rank test,  $p = 0.00084$ ) (Figure 4(b)). In addition, we plotted the ROC curves for predicting one- and three-year survival according to the OS of patients, and the values of the area under the curve (AUC) were 0.552 and 0.605, respectively (Figure 4(c)). The GEO OSCC cohort was then analyzed for distribution of selected gene expressions and risk scores as well as survival status (Figures 4(d)–4(f)). Furthermore, we investigate the expression difference of eight signature genes between high and low groups. The result showed that the expression of the eight signature genes was significantly higher in the low-risk group than in the high-risk group in both TCGA and GEO

cohorts (TCGA: Supplementary Figure 1A; GEO: Supplementary Figure 1B).

**3.4. Relationship between Prognostic mRNA Signature and Clinical Parameters.** We next investigate the relationship between the risk score and clinical parameters in the TCGA database. Only OSCC samples with complete clinical information (including patient tumor stage and grade (including N and T stages), genders, age, and the presence of perineural and lymphovascular invasion) were used. We found that, in addition to age (Figure 5(a)), perineural and lymphovascular invasion were found to correlate significantly with the hypoxia-immune mRNA signature, but not with patient tumor stage and grade (including N and T stages) and genders (Figures 5(b)–5(h)).

Both univariate and multivariate analyses were done on the TCGA dataset to further prove the significance of the constructed hypoxia- and immune-related gene signatures. The risk score, age, and pathological stage may be able to be combined to predict the prognosis of the TCGA OSCC cohort (Table 2).

Finally, we investigated whether our model could be used to determine survival outcomes in subgroups with different clinicopathological features. Supplementary Figures 2A–2I show that the risk score could be used to predict the prognosis of patients with different clinicopathological features.

**3.5. Variability of Degree of Immune Cell Infiltration between the Low- and High-Risk TCGA OSCC Cohorts.** The degree of immune cell infiltration between low- and high-risk groups was evaluated using the CIBERSORT algorithm. Those in the low-risk group were more likely to have higher infiltration degrees of CD8+ T cells, plasma cells, follicular helper T cells, regulatory T cells (Tregs), and naive B cells. On the other hand, high-risk patients demonstrated higher degrees of infiltration of activated DCs, activated mast cells, and neutrophils. Furthermore, the immune indicator scores and the immune checkpoint expressions in the low-risk group were all remarkably raised in comparison to those in the high-risk group patients (Figures 6(b)–6(g)).

To further assess the ability of our model to predict immunotherapy efficacy, the IMvigor210 cohort of MIBC patients treated with PD-L1 inhibitors was used. The Kaplan–Meier analysis showed that patients with high-risk scores had a poorer survival rate than those with low-risk scores (Supplementary Figure 3A,  $p = 0.018$ ). ROC curve analyses showed that the risk score combined with tumor mutational burden (TMB) and tumor neoantigen burden (TNB) output a higher area under the curve (AUC) value (AUC = 0.699) than TMB (AUC = 0.659), TNB (AUC = 0.690), or risk score (AUC = 0.560), respectively (Supplementary Figure 3B). Furthermore, we further discussed the differences in immunotherapy response between the high-risk group and the low-risk group based on the immune signature, and the results found that patients in the low-risk group had a higher complete response (CR)/partial response (PR) rate than those in the high-risk group (Supplementary Figure 3C).

#### 4. Discussion

OSCC is the most common oral cancer characterized by a higher recurrence rate and lower overall survival rate of patients [11]. Hypoxia has been found to play an important role in the prognosis and treatment of OSCC [28]. Hypoxia also influences the activity of immune cells in the tumor microenvironment [31]. For example, hypoxia can impair the maturation and activity of dendritic cells (DCs) and natural killer (NK) cells [31, 32]. Both hypoxia and immune status play important roles in OSCC [33–35]. However, there is a lack of a reliable prognostic model of integration of hypoxia- and immune-related signatures for OSCC. In this study, we have a comprehensive analysis and constructed a hypoxia-immune-integrated indicator in OSCC.

Based on hypoxia-related signatures, the samples in our study were grouped into 3 clusters (Cluster 1, Cluster 2, and Cluster 3) (Figures 1(a)–1(c)). The presence of cell hypoxia induces the expression of HIF-1 $\alpha$ . Enhanced HIF-1 $\alpha$  expression has previously been associated with poor prognosis and lymph nodes metastasis in OSCC patients [36]. Further evaluation of overall patient survival resulted in the combination of Clusters 2 and 3 to form the Hypoxia\_High group, while those in Cluster 1 were designated as the Hypoxia\_Low group (Figure 1(d)). The expression of genes from two hypoxia-related gene sets, “increased oxygen delivery” and “reduced oxygen consumption,” was compared between Cluster 1 and Clusters 2 and 3. Eleven of the 14 genes belonging to the “increased oxygen delivery” were expressed at higher levels in Clusters 2 and 3 in contrast to Cluster 1 (Figure 1(e)). On the other hand, 7 of the 12 genes associated with “reduced oxygen consumption” were highly expressed in Cluster 1 compared to Clusters 2 and 3 (Figure 1(f)). Therefore, Cluster 1 and Clusters 2 and 3 were considered as the Hypoxia\_Low and Hypoxia\_High groups, respectively. A total of 773 DEGs were identified across both these groups (Figures 1(e) and 1(f)).

We then divided these OSCC patients into three groups (Immune\_High, Immune\_Medium, and Immune\_Low) according to the abundance of immune cells (Figure 2(a)). The immune score of Immune\_High group was higher than that of the Immune\_Medium and Immune\_Low groups. The Immune\_Low group has the lowest immune score among the three groups (Figures 2(b) and 2(c)). A total of 854 immune-related genes in OSCC were determined between the Immune\_High and Immune\_Low groups (Figures 2(e) and 2(f)). All genes were found to be enriched in immune-related functions, including “leukocyte activation involved immune response,” “adaptive immune response,” “lymphocyte activation,” and “immunoregulatory interactions between a Lymphoid and a non-Lymphoid cell” (Figure 2(f)). These immune processes are also related to the malignant properties of OSCC. Previous reports found that a higher neutrophil-to-lymphocyte ratio was a negative predictor for overall survival for patients with OSCC [37]. Dendritic cell immune response activation was able to be induced by IFN- $\gamma$ -inhibited OSCC growth in tumor-bearing mice [38].

TABLE 1: Clinical characteristics of the TCGA OSCC patients.

Characteristic	High ( $n = 161$ )	Low ( $n = 142$ )	TCGA ( $n = 303$ )
<i>Age</i>			
$\leq 62$	80	81	161
$> 62$	81	61	142
<i>Gender</i>			
Female	51	48	99
Male	110	94	204
<i>Survival status</i>			
Living	93	100	193
Dead	68	42	110
<i>Pathologic M</i>			
Unknown	100	88	188
M0	61	54	115
<i>Pathologic N</i>			
Unknown	27	17	44
N0	59	54	113
N1	27	19	46
N2	47	51	98
N3	1	1	2
<i>Pathologic T</i>			
Unknown	11	7	18
T1	12	15	27
T2	50	43	93
T3	31	26	57
T4	57	51	108
<i>Tumor stage</i>			
Unknown	13	10	23
Stage I	9	8	17
Stage II	27	24	51
Stage III	33	21	54
Stage IV	79	79	158

To further integrate the hypoxia- and immune-related genes, the overlapping genes between the two gene sets were screened. Eight prominent mRNA signatures associated with OS from the 193 overlapping genes were selected, which were FAM122C, RNF157, RANBP17, SOWAHA, KIAA1211, RIPPLY2, INSL3, and DNAH1 (Figures 3(a)–3(d)). Among these mRNAs, KIAA1211 is known to be an oncogenic gene. Non-small-cell lung cancer tissues were found to have raised KIAA1211 expressions in contrast to adjacent normal tissues. Knockdown of KIAA1211 inhibited the proliferative abilities of NSCLC cells while promoting apoptosis both *in vitro* and *in vivo* [39]. Small cell lung cancer patients with a KIAA1211 mutation possess a longer survival period than those with wild-type KIAA1211 mutations [40]. RIPPLY2 represented one of the mRNAs in a five-gene signature verified to be able to predict the survival of endometrial cancer patients [41]. The tumor-promoting effect of INSL3 in cancer has also been widely addressed. The plasma level of INSL3 was found to be raised in an individual with metastatic ovarian cancer [42]. Other reports highlight the potential role of INSL3 as a marker of human testicular Leydig cell tumors [43]. INSL3 could promote tumor growth and angiogenesis in nude mice model of thyroid cancer in a manner that appeared to be related to the action of RXFP2 and the secretion of S100A4 and (pro-) cathepsin-L [44]. In pancreatic cancer patients, a higher serum level of INSL3 was

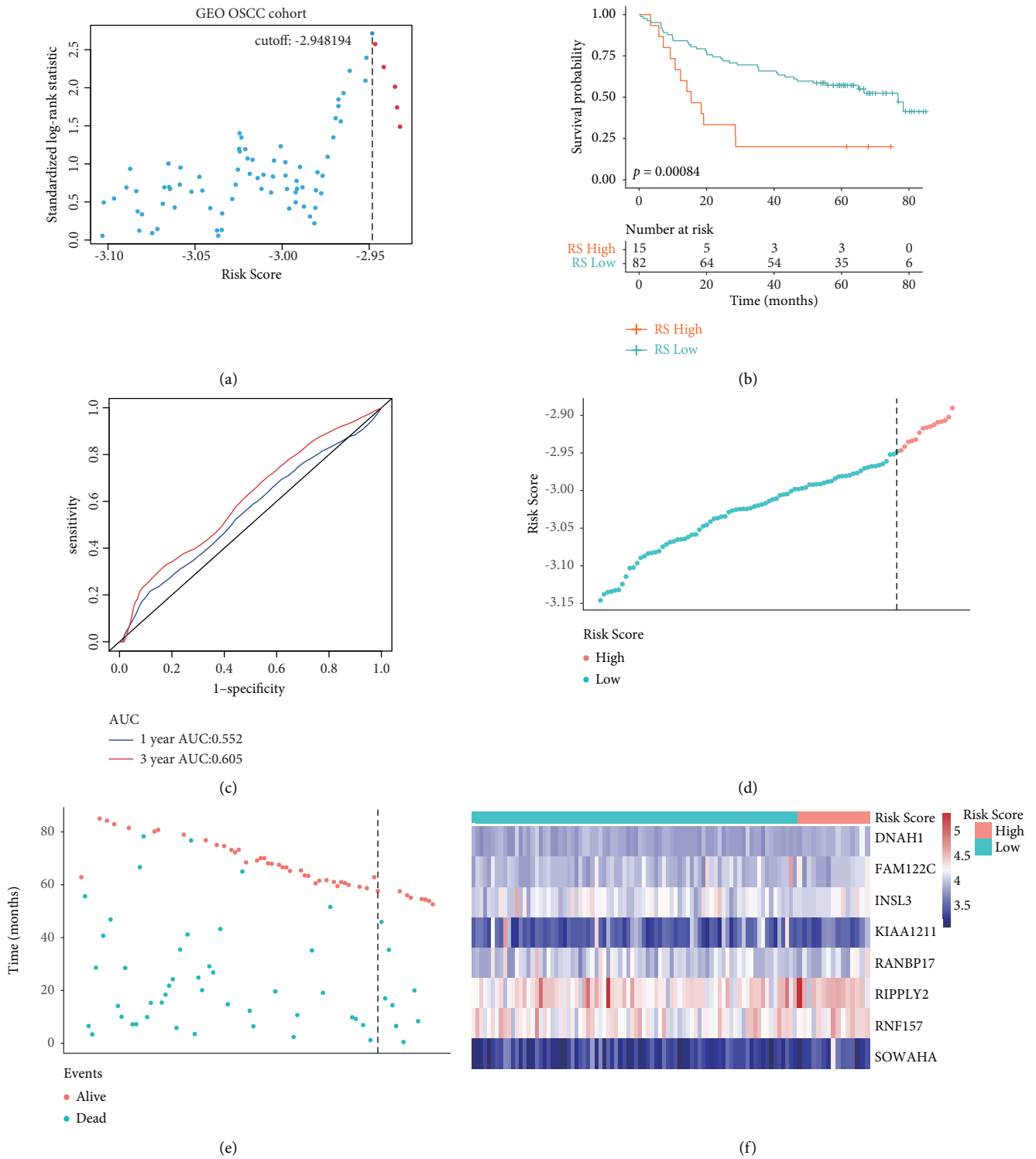


FIGURE 4: The GEO cohort was used to verify the hypoxia-immune-based prognosis classifier. (a) The scatter plot demonstrates the standardized log-rank statistic value for each corresponding cutoff of hypoxia-immune-based risk score. Vertical dashed lines represent the optimal cutoff with the maximum standard log-rank statistic. (b) The hypoxia-immune-based prognosis classifier is used to label patients from the GEO cohort as either low or high risk, followed by the construction of an overall survival Kaplan–Meier plot. (c) One-year and 3-year survival rates of OSCC patients in the GEO cohort as shown using ROC curves. (d) Distributions of risk score, (e) survival status, and (f) expression profile of signature genes.

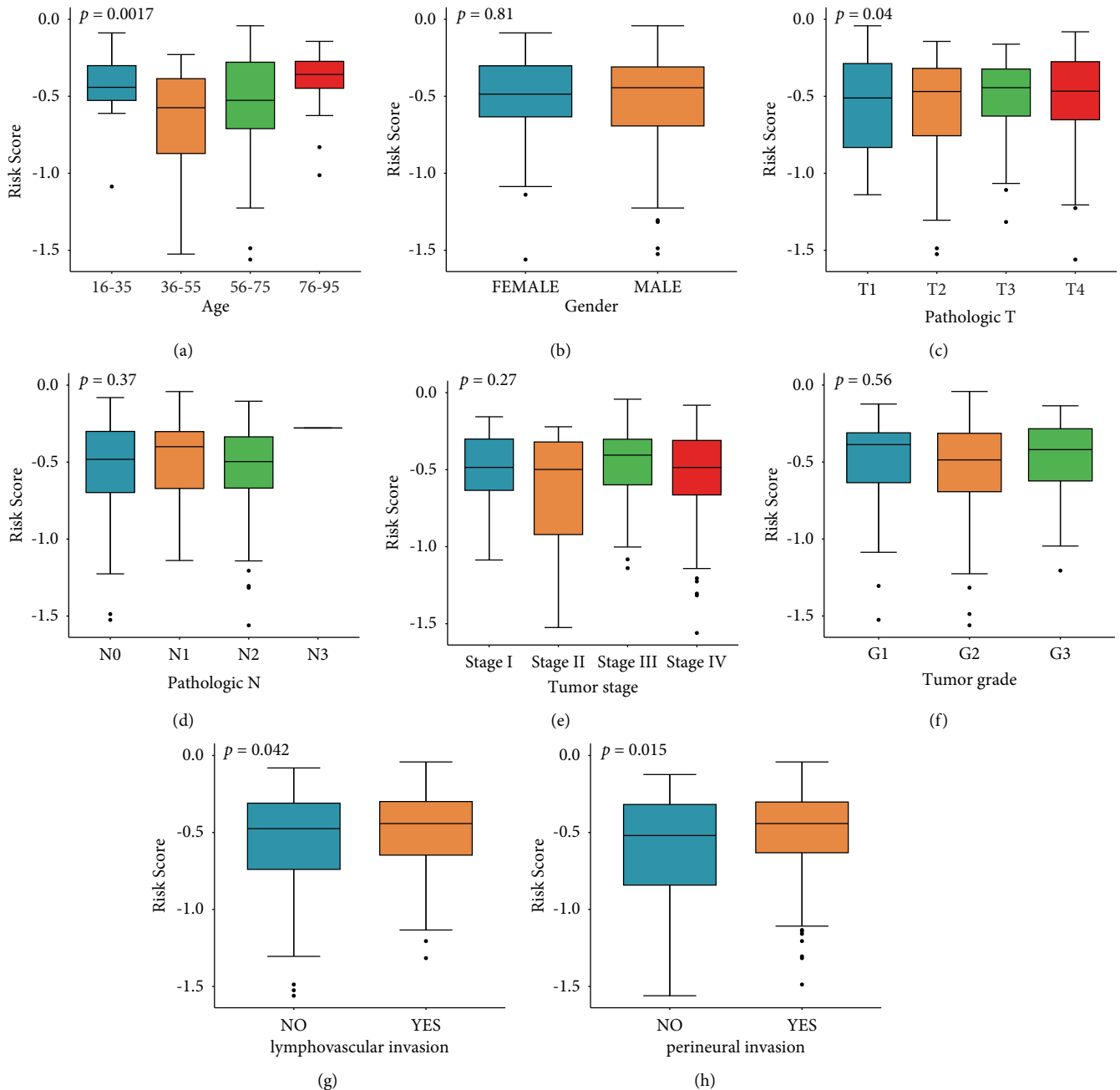


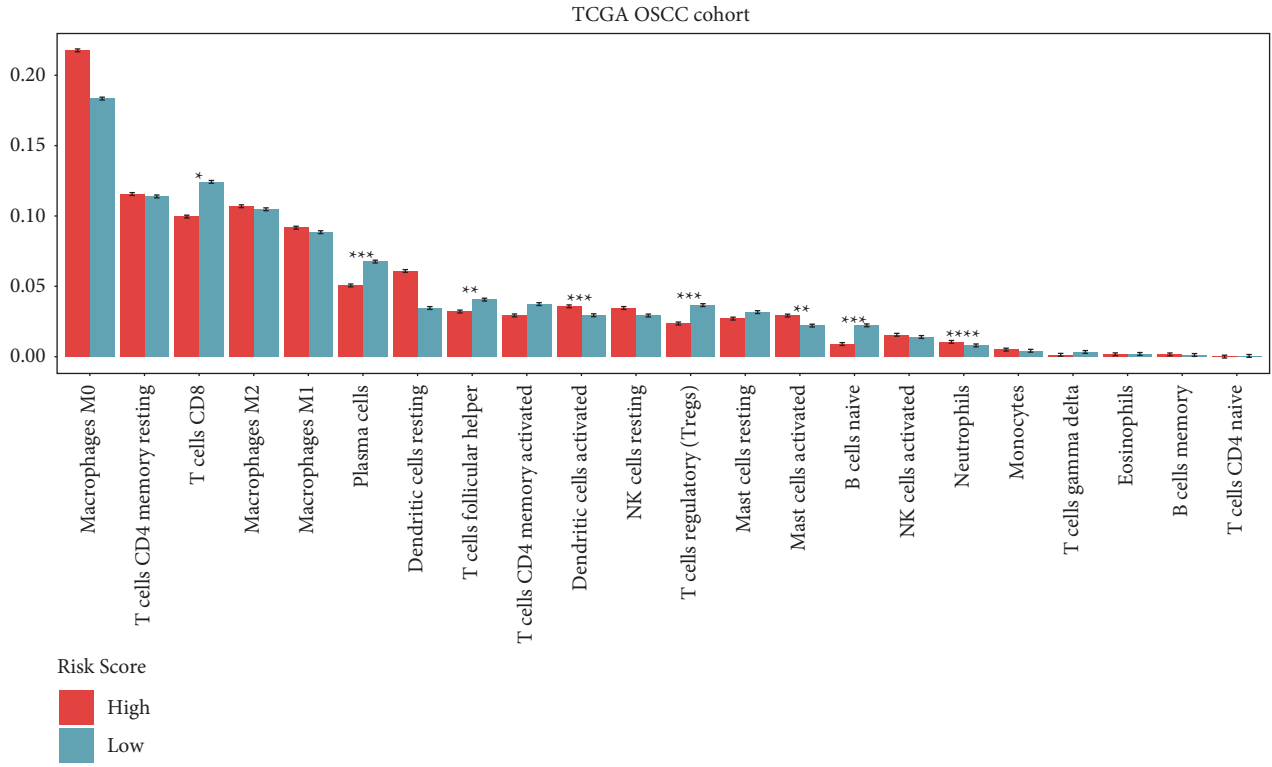
FIGURE 5: The TCGA cohort was used to determine the association between clinical parameters and the gene signature. Significant association was only found with (a) age, but not with (b) gender, (c) T stage, (d) N stage, (e) tumor stage, (f) tumor grade, (g) lymphovascular invasion, and (h) perineural invasion.

associated with increased anorexia [45]. These mRNAs, which have previously been found to be of significant value in other cancers, should be further investigated for their role in OSCC.

These 8 mRNAs were used to construct an mRNA signature, which may have prognostic potential in OSCC (Figures 3(e)–3(h)). This constructed risk score was then validated in a cohort from the GEO dataset (Figures 4(a)–4(f)). The risk score showed a significant association only with age and perineural and lymphovascular invasion, but

not with other features, including gender, T stage, N stage, and tumor stage (Figures 5(a)–5(h)). Therefore, this established gene signature may be an independent prognostic indicator.

Cancer immunotherapy has obtained much attention in recent years and is considered as a direction of tumor therapy, such as checkpoint blocking therapy. The specific difference in the tumor immune environment can reflect the heterogeneity of clinical samples in response to current immunotherapy. Finally, the immune profile variability



(a)

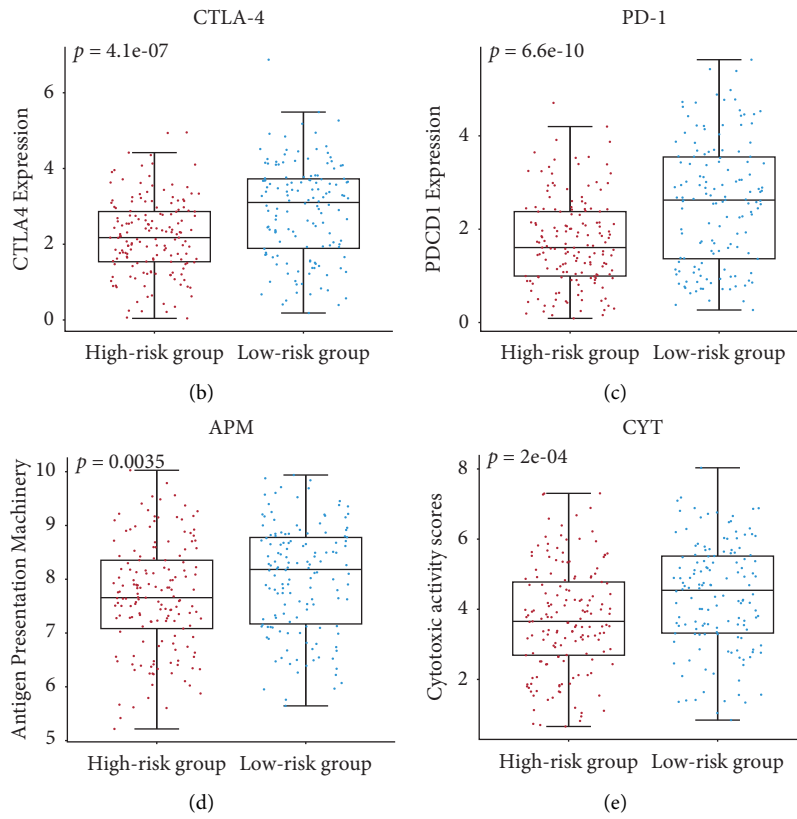


FIGURE 6: Continued.

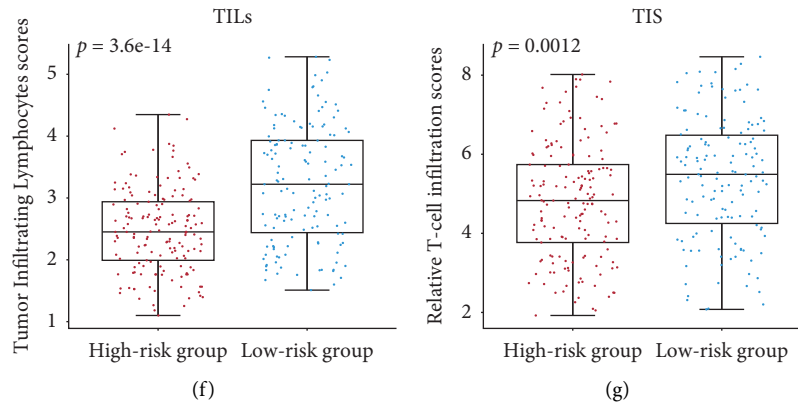


FIGURE 6: Analysis of immune status variability of the high- and low-risk groups in the TCGA OSCC cohort. (a) The bar plot shows various immune cell infiltration between the high- and low-risk patients. (b-g) Box plots illustrating markedly different immune checkpoints between the high- and low-risk groups.

TABLE 2: Univariate and multivariate Cox regression analysis of clinicopathological features associated with overall survival in TCGA data.

Variables	Univariate analysis		Multivariate analysis	
	HR (95% CI)	P-value	HR (95% CI)	P-value
Age (> 62/≤62)	1.021 (1.005–1.037)	0.00942*	1.0329 (1.0103–1.056)	0.00413*
Gender (male/female)	1.021 (0.6894–1.511)	0.919	0.7058 (0.4183–1.191)	0.19194
Tumor grade (G4/G3/G2/G1)	1.35 (1.01–1.803)	0.0424*	1.4226 (0.9819–2.061)	0.06242
Stage (IV/III/II/I)	1.482 (1.172–1.874)	0.00102*	1.7513 (1.0060–3.049)	0.04758*
Pathologic T (T4/T3/T2/T1)	1.447 (1.181–1.773)	0.000365*	1.0449 (0.7235–1.509)	0.81483
Pathologic N (N3/N2/N1/N0)	1.411 (1.116–1.785)	0.00403*	1.1601 (0.8620–1.561)	0.32721
Risk score	4.322 (2.096–8.912)	0.0000736*	3.5246 (1.4818–8.383)	0.00438*

Note. \*Statistically significant. HR: hazard ratio; CI: confidence interval.

between the high- and low-risk groups was compared in the TCGA OSCC cohort. High-risk group samples showed different degree of immune cell infiltration (Figure 6(a)). The low-risk group showed higher immune status than the high-risk group, as evidenced by a higher amount of immune checkpoint expression, including CTLA-4, PD-1, APM, CYT, and TILs (Figures 6(b)–6(g)). These checkpoints are indicators of OSCC risk and may function as therapeutic targets in OSCC. The genetic variants of CTLA-4 were associated with tobacco-related OSCC risk in the North Indian population [46]. A high number of CTLA-4 cells is associated with poor 5-year metastasis-free survival of OSCC patients [47]. An anti-PD-1 antibody is an agent which may prevent the initiation and progression of OSCC while prolonging patient survival time [48–50]. Analysis of the IMvigor210 cohort revealed that patients with low-risk scores had better survival and tended to have a higher complete response (CR)/partial response (PR) rate.

In conclusion, hypoxia and immune status play a key role in the prognosis of OSCC. Combining hypoxia- and immune-related genes, we established an OSCC prognostic model based on hypoxia and immunity, which provides a reliable reference for clinical decision-making.

A preprint has previously been published on the preprint website (<https://www.researchsquare.com/article/rs-596220/v1>) [51].

## Data Availability

The data used are obtained from TCGA Data Portal: <https://portal.gdc.cancer.gov/>, GEO Datasets: <https://www.ncbi.nlm.nih.gov/gds/>, and Metascape: <https://metascape.org/>.

## Conflicts of Interest

The authors declare no conflicts of interest.

## Authors' Contributions

Jichen Li and Shaohua Lv designed the study. Shaohua Lv and Zhipeng Qian collected data. Zhipeng Qian and Songlin Piao developed the computational model and analyzed it. Shaohua Lv and Jianhao Li wrote the paper. All authors reviewed and approved this paper.

## Acknowledgments

This research was supported by the foundation of the National Conference on Undergraduate Innovation and Entrepreneurship (no. S202110226059).

## Supplementary Materials

Supplementary Figure 1. The expression of the eight signature genes. (A) Differential expression profiles of the 8

signature genes in low and high-risk groups. (B) Differential expression profiles of the 8 signature genes in low and high-risk groups. *Supplementary Figure 2*. Kaplan–Meier analyses of the eight-gene-based model in subgroups with different clinicopathological features. Kaplan–Meier survival curves for (A) age >62, (B) age ≤62, (C) male, (D) female, (E) T1 + T2, (F) T3 + T4, (G) N0 + N1, (H) N2 + N3, (I) stage I + stage II, (J) stage III + stage IV, (K) G1 + G2, and (L) G3 for the low- and high-risk groups. T: stage-T, N: stage-N, M: stage-M, and G: tumor grade. *Supplementary Figure 3*. The risk model predicts immunotherapy efficacy. (A) Kaplan–Meier overall survival curves for patients assigned to low- and high-risk groups in the IMvigor210 cohort. (B) ROC curves of tumor mutational burden (TMB), tumor neoantigen burden (TNB), risk score, and the combination (TMB, TNB, and risk score). (C) Rate of clinical response (CR/PR and SD/PD) to immunotherapy in the low- or high-risk groups (CR, complete response; PR, partial response; PD, progressive disease; SD, stable disease).” (*Supplementary Materials*)

## References

- [1] F. Bray, J. Ferlay, I. Soerjomataram, R. L. Siegel, L. A. Torre, and A. Jemal, “Global cancer statistics 2018: GLOBOCAN estimates of incidence and mortality worldwide for 36 cancers in 185 countries,” *CA: A Cancer Journal for Clinicians*, vol. 68, no. 6, pp. 394–424, 2018.
- [2] R. L. Siegel, K. D. Miller, and A. Jemal, “Cancer statistics, 2020,” *CA: A Cancer Journal for Clinicians*, vol. 70, no. 1, pp. 7–30, 2020.
- [3] A. W. Eckert, M. H. W. Lautner, A. Schütze, H. Taubert, J. Schubert, and U. Bilkenroth, “Coexpression of hypoxia-inducible factor-1 $\alpha$  and glucose transporter-1 is associated with poor prognosis in oral squamous cell carcinoma patients,” *Histopathology*, vol. 58, no. 7, pp. 1136–1147, 2011.
- [4] A. W. Eckert, M. Kappler, J. Schubert, and H. Taubert, “Correlation of expression of hypoxia-related proteins with prognosis in oral squamous cell carcinoma patients,” *Oral and Maxillofacial Surgery*, vol. 16, no. 2, pp. 189–196, 2012.
- [5] M. E. Hubbi and G. L. Semenza, “Regulation of cell proliferation by hypoxia-inducible factors,” *American Journal of Physiology-Cell Physiology*, vol. 309, no. 12, pp. C775–C782, 2015.
- [6] P. L. B. Domingos, M. G. Souza, T. A. Guimarães et al., “Hypoxia reduces the E-cadherin expression and increases OSCC cell migration regardless of the E-cadherin methylation profile,” *Pathology, Research & Practice*, vol. 213, no. 5, pp. 496–501, 2017.
- [7] G. Zhu, S. Wang, J. Chen et al., “Long noncoding RNA HAS2-AS1 mediates hypoxia-induced invasiveness of oral squamous cell carcinoma,” *Molecular Carcinogenesis*, vol. 56, no. 10, pp. 2210–2222, 2017.
- [8] T. Ishikawa, K. Nakashiro, S. K. Klosek et al., “Hypoxia enhances CXCR4 expression by activating HIF-1 in oral squamous cell carcinoma,” *Oncology Reports*, vol. 21, pp. 707–712, 2009.
- [9] J. P. Joseph, M. K. Harishankar, A. A. Pillai, and A. Devi, “Hypoxia induced EMT: a review on the mechanism of tumor progression and metastasis in OSCC,” *Oral Oncology*, vol. 80, pp. 23–32, 2018.
- [10] X. Lv, J. Li, C. Zhang et al., “The role of hypoxia-inducible factors in tumor angiogenesis and cell metabolism,” *Genes & Diseases*, vol. 4, no. 1, pp. 19–24, 2017.
- [11] X. Zhang, S. Han, H.-Y. Han et al., “Risk prediction for malignant conversion of oral epithelial dysplasia by hypoxia related protein expression,” *Pathology*, vol. 45, no. 5, pp. 478–483, 2013.
- [12] S.-L. Jian, H.-Y. Hsieh, C.-T. Liao et al., “G $\alpha$ 12 drives invasion of oral squamous cell carcinoma through up-regulation of proinflammatory cytokines,” *PLoS One*, vol. 8, no. 6, Article ID e66133, 2013.
- [13] M.-x. Cao, W.-l. Zhang, X.-h. Yu et al., “Retracted article: interplay between cancer cells and M2 macrophages is necessary for miR-550a-3-5p down-regulation-mediated HPV-positive OSCC progression,” *Journal of Experimental & Clinical Cancer Research*, vol. 39, no. 1, p. 102, 2020.
- [14] P. Diao, Y. Wu, J. Li et al., “Preoperative systemic inflammation index predicts prognosis of patients with oral squamous cell carcinoma after curative resection,” *Journal of Translational Medicine*, vol. 16, no. 1, p. 365, 2018.
- [15] T. S. de Souza Malaspina, T. H. Gasparoto, M. R. S. N. Costa et al., “Enhanced programmed death 1 (PD-1) and PD-1 ligand (PD-L1) expression in patients with actinic cheilitis and oral squamous cell carcinoma,” *Cancer Immunology, Immunotherapy*, vol. 60, no. 7, pp. 965–974, 2011.
- [16] K. Dave, A. Ali, and M. Magalhaes, “Increased expression of PD-1 and PD-L1 in oral lesions progressing to oral squamous cell carcinoma: a pilot study,” *Scientific Reports*, vol. 10, no. 1, p. 9705, 2020.
- [17] N. Kondoh, M. Mizuno-Kamiya, N. Umemura et al., “Immunomodulatory aspects in the progression and treatment of oral malignancy,” *Japanese Dental Science Review*, vol. 55, no. 1, pp. 113–120, 2019.
- [18] K. Meehan, C. Leslie, M. Lucas et al., “Characterization of the immune profile of oral tongue squamous cell carcinomas with advancing disease,” *Cancer Medicine*, vol. 9, no. 13, pp. 4791–4807, 2020.
- [19] M. Sieviläinen, R. Almahmoudi, A. Al-Samadi, T. Salo, M. Pirinen, and A. Almangush, “The prognostic value of immune checkpoints in oral squamous cell carcinoma,” *Oral Diseases*, vol. 25, no. 6, pp. 1435–1445, 2019.
- [20] G.-z. Huang, Q.-q. Wu, Z.-n. Zheng et al., “Bioinformatics analyses indicate that cathepsin G (CTSG) is a potential immune-related biomarker in oral squamous cell carcinoma (OSCC),” *OncoTargets and Therapy*, vol. 14, pp. 1275–1289, 2021.
- [21] L. Li, B. Cao, X. Liang et al., “Microenvironmental oxygen pressure orchestrates an anti- and pro-tumoral  $\gamma\delta$  T cell equilibrium via tumor-derived exosomes,” *Oncogene*, vol. 38, no. 15, pp. 2830–2843, 2019.
- [22] S. Zheng, Y. Zou, J. y. Liang et al., “Identification and validation of a combined hypoxia and immune index for triple-negative breast cancer,” *Molecular Oncology*, vol. 14, no. 11, pp. 2814–2833, 2020.
- [23] Y. Liu, J. Wu, W. Huang et al., “Development and validation of a hypoxia-immune-based microenvironment gene signature for risk stratification in gastric cancer,” *Journal of Translational Medicine*, vol. 18, no. 1, p. 201, 2020.
- [24] Z. Zhang, S. Bao, C. Yan, P. Hou, M. Zhou, and J. Sun, “Computational principles and practice for decoding immune contexture in the tumor microenvironment,” *Briefings in Bioinformatics*, vol. 22, no. 3, 2021.
- [25] Z. Zhang, C. Yan, K. Li et al., “Pan-cancer characterization of lncRNA modifiers of immune microenvironment reveals

- clinically distinct de novo tumor subtypes,” *Npj Genomic Medicine*, vol. 6, no. 1, p. 52, 2021.
- [26] H. Zhao, S. Gu, S. Bao et al., “Mechanistically derived patient-level framework for precision medicine identifies a personalized immune prognostic signature in high-grade serous ovarian cancer,” *Briefings in Bioinformatics*, vol. 22, 2021.
- [27] J.-C. Guo, Y. Wu, Y. Chen et al., “Protein-coding genes combined with long noncoding RNA as a novel transcriptome molecular staging model to predict the survival of patients with esophageal squamous cell carcinoma,” *Cancer Communications*, vol. 38, no. 1, p. 4, 2018.
- [28] Y. Han, X. Wang, K. Xia, and T. Su, “A novel defined hypoxia-related gene signature to predict the prognosis of oral squamous cell carcinoma,” *Annals of Translational Medicine*, vol. 9, no. 20, p. 1565, 2021.
- [29] Z. Qian, D. Shang, L. Fan et al., “Heterogeneity analysis of the immune microenvironment in laryngeal carcinoma revealed potential prognostic biomarkers,” *Human Molecular Genetics*, vol. 332, 2021.
- [30] V. Bhandari, C. Hoey, L. Y. Liu et al., “Molecular landmarks of tumor hypoxia across cancer types,” *Nature Genetics*, vol. 51, no. 2, pp. 308–318, 2019.
- [31] K. Mortezaee and J. Majidpoor, “The impact of hypoxia on immune state in cancer,” *Life Sciences*, vol. 286, Article ID 120057, 2021.
- [32] M. H. Bao and C. C. Wong, “Hypoxia, metabolic reprogramming, and drug resistance in liver cancer,” *Cells*, vol. 10, no. 7, 2021.
- [33] L. Gao, Z.-C. Dou, W.-H. Ren, S.-M. Li, X. Liang, and K.-Q. Zhi, “CircCDR1as upregulates autophagy under hypoxia to promote tumor cell survival via AKT/ERK $\frac{1}{2}$ /mTOR signaling pathways in oral squamous cell carcinomas,” *Cell Death & Disease*, vol. 10, no. 10, p. 745, 2019.
- [34] W. Dong, Y. Chen, N. Qian et al., “SATB2 knockdown decreases hypoxia-induced autophagy and stemness in oral squamous cell carcinoma,” *Oncology Letters*, vol. 20, no. 1, pp. 794–802, 2020.
- [35] H. Quan, Z. Shan, Z. Liu et al., “The repertoire of tumor-infiltrating lymphocytes within the microenvironment of oral squamous cell carcinoma reveals immune dysfunction,” *Cancer Immunology, Immunotherapy*, vol. 69, no. 3, pp. 465–476, 2020.
- [36] M. Uehara, K. Sano, H. Ikeda, M. Nonaka, and I. Asahina, “Hypoxia-inducible factor 1 alpha in oral squamous cell carcinoma and its relation to prognosis,” *Oral Oncology*, vol. 45, no. 3, pp. 241–246, 2009.
- [37] Y. Wang, P. Wang, O. Andrukhov et al., “Meta-analysis of the prognostic value of the neutrophil-to-lymphocyte ratio in oral squamous cell carcinoma,” *Journal of Oral Pathology & Medicine*, vol. 47, no. 4, pp. 353–358, 2018.
- [38] H. Wei, P. Hongya, J. Linlin et al., “IFN- $\gamma$  enhances the anti-tumour immune response of dendritic cells against oral squamous cell carcinoma,” *Archives of Oral Biology*, vol. 56, no. 9, pp. 891–898, 2011.
- [39] Z. Liu, H. Cao, Y. Shi, and R. Yang, “KIAA1211 plays an oncogenic role in human non-small cell lung cancer,” *Journal of Cancer*, vol. 10, no. 26, pp. 6747–6753, 2019.
- [40] L. Wang, T. Luan, S. Zhou et al., “LncRNA HCP5 promotes triple negative breast cancer progression as a ceRNA to regulate BIRC3 by sponging miR-219a-5p,” *Cancer Med*, vol. 8, no. 9, 2019.
- [41] X. Li, F. Yin, Y. Fan et al., “Establishment and validation of a prognostic nomogram based on a novel five-DNA methylation signature for survival in endometrial cancer patients,” *Cancer Medicine*, vol. 10, no. 2, pp. 693–708, 2021.
- [42] M. Rossato, M. Barban, and R. Vettor, “Elevated plasma levels of the novel hormone INSL3 in a woman with metastatic ovarian cancer,” *The International Journal of Biological Markers*, vol. 22, no. 2, pp. 159–160, 2007.
- [43] M. Rossato, I. M. Tavolini, A. Calcagno, M. Gardiman, F. Dal Moro, and W. Artibani, “The novel hormone INSL3 is expressed in human testicular Leydig cell tumors: a clinical and immunohistochemical study,” *Urologic Oncology: Seminars and Original Investigations*, vol. 29, no. 1, pp. 33–37, 2011.
- [44] S. Hombach-Klonisch, J. Bialek, Y. Radestock et al., “INSL3 has tumor-promoting activity in thyroid cancer,” *International Journal of Cancer*, vol. 127, no. 3, pp. 521–531, 2010.
- [45] E. Yeom, H. Shin, W. Yoo et al., “Tumour-derived Dllp8/INSL3 induces cancer anorexia by regulating feeding neuropeptides via Lgr3/8 in the brain,” *Nature Cell Biology*, vol. 23, no. 2, pp. 172–183, 2021.
- [46] V. Bharti, B. K. Mohanti, and S. N. Das, “Functional genetic variants of CTLA-4 and risk of tobacco-related oral carcinoma in high-risk North Indian population,” *Human Immunology*, vol. 74, no. 3, pp. 348–352, 2013.
- [47] K. Koike, H. Dehari, K. Ogi et al., “Prognostic value of FoxP3 and CTLA-4 expression in patients with oral squamous cell carcinoma,” *PLoS One*, vol. 15, no. 8, Article ID e0237465, 2020.
- [48] R. L. Ferris, G. Blumenschein Jr., J. Fayette et al., “Nivolumab for recurrent squamous-cell carcinoma of the head and neck,” *New England Journal of Medicine*, vol. 375, no. 19, pp. 1856–1867, 2016.
- [49] J. Wang, T. Xie, B. Wang et al., “PD-1 blockade prevents the development and progression of carcinogen-induced oral premalignant lesions,” *Cancer Prevention Research*, vol. 10, no. 12, pp. 684–693, 2017.
- [50] J. A. Monteiro de Oliveira Novaes, T. Hirz, I. Guijarro et al., “Targeting of CD40 and PD-L1 pathways inhibits progression of oral premalignant lesions in a carcinogen-induced model of oral squamous cell carcinoma,” *Cancer Prevention Research*, vol. 14, no. 3, 2020.
- [51] J. L. Shaohua Lv, S. Piao, and J. Li, “Identification and validation of a hypoxia-immune-based prognostic mRNA signature for oral squamous cell carcinoma,” inpress, 2021.