

CORRECTION

Correction: Elastin Fiber Accumulation in Liver Correlates with the Development of Hepatocellular Carcinoma

Yutaka Yasui, Tokiya Abe, Masayuki Kurosaki, Mayu Higuchi, Yasuyuki Komiyama, Tsubasa Yoshida, Tsuguru Hayashi, Konomi Kuwabara, Kenta Takaura, Natsuko Nakakuki, Hitomi Takada, Nobuharu Tamaki, Shoko Suzuki, Hiroyuki Nakanishi, Kaoru Tsuchiya, Jun Itakura, Yuka Takahashi, Akinori Hashiguchi, Michiie Sakamoto, Namiki Izumi

Figs 4 and 5 are incorrect. The horizontal axis title is incorrect. The correct title is: Time after liver biopsy in month. The authors have provided corrected versions here.



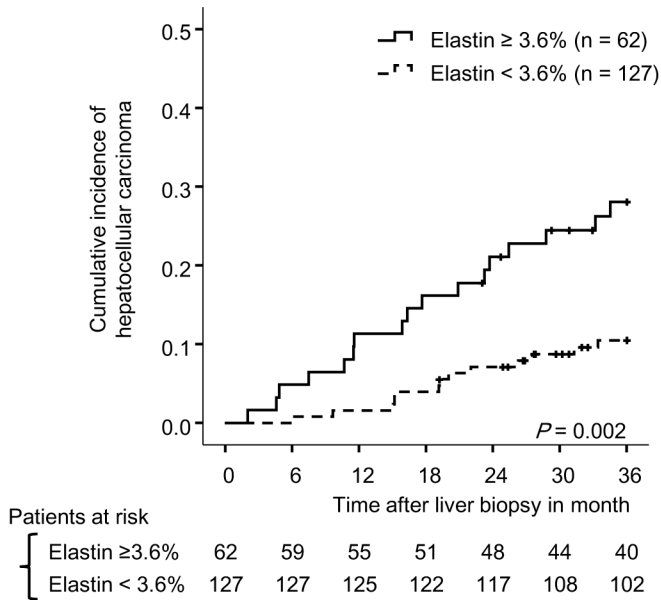
OPEN ACCESS

Citation: Yasui Y, Abe T, Kurosaki M, Higuchi M, Komiyama Y, Yoshida T, et al. (2016) Correction: Elastin Fiber Accumulation in Liver Correlates with the Development of Hepatocellular Carcinoma. PLoS ONE 11(8): e0160133. doi:10.1371/journal.pone.0160133

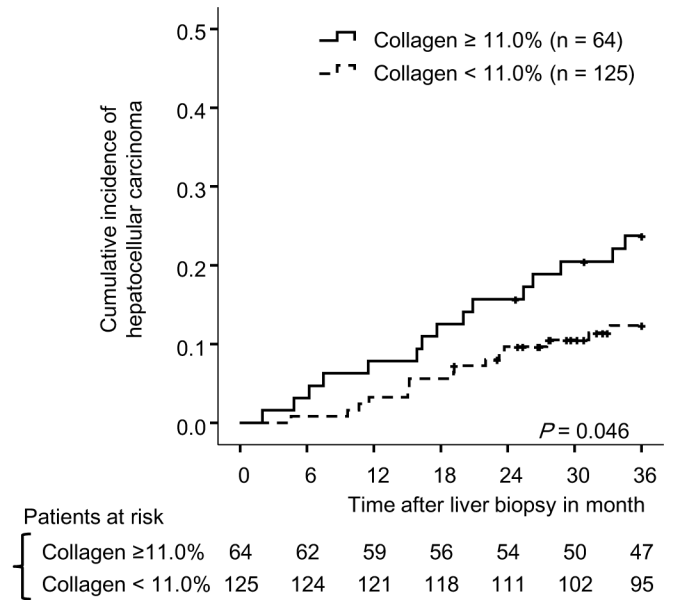
Published: August 15, 2016

Copyright: © 2016 Yasui et al. This is an open access article distributed under the terms of the [Creative Commons Attribution License](https://creativecommons.org/licenses/by/4.0/), which permits unrestricted use, distribution, and reproduction in any medium, provided the original author and source are credited.

A. Cumulative incidence of HCC according to elastin fiber



B. Cumulative incidence of HCC according to collagen fiber



C. Cumulative incidence of HCC according to elastin and collagen fiber

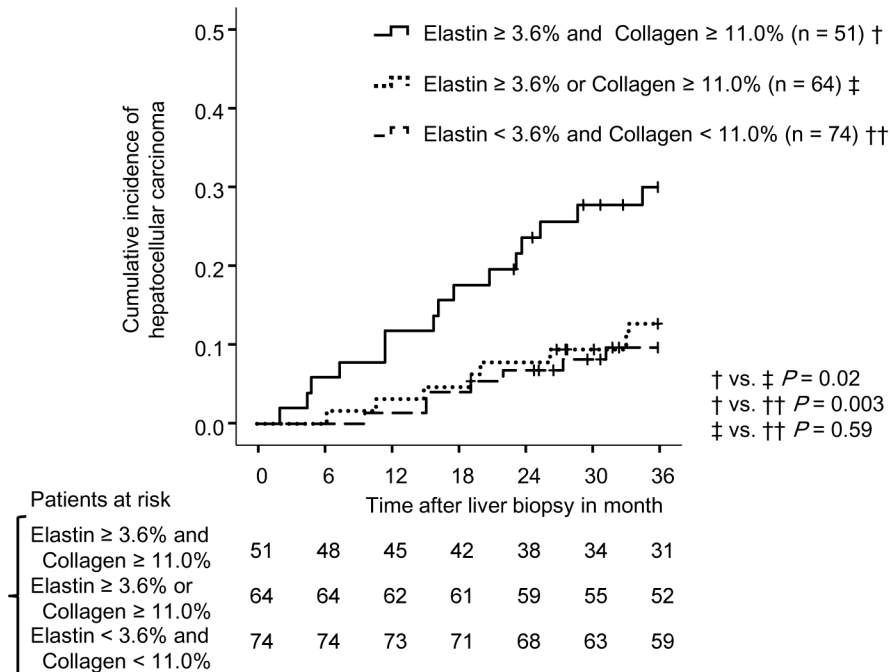
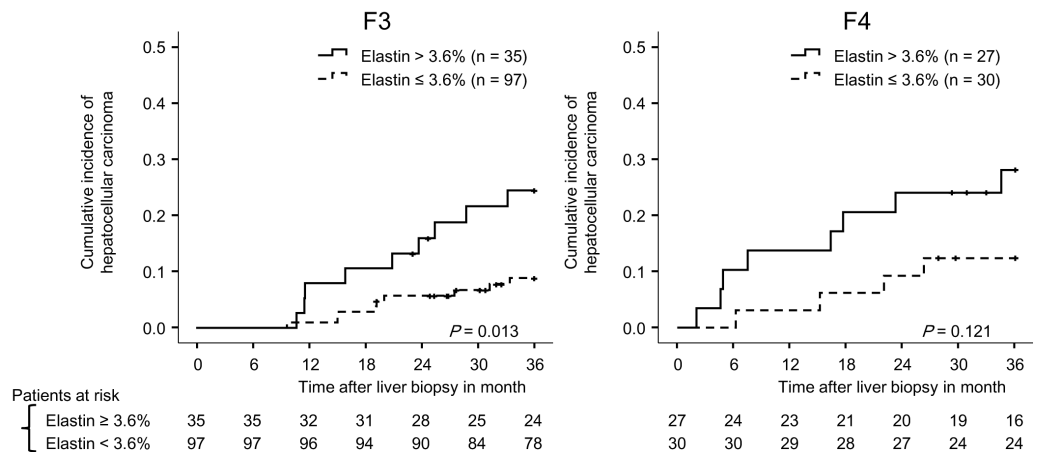


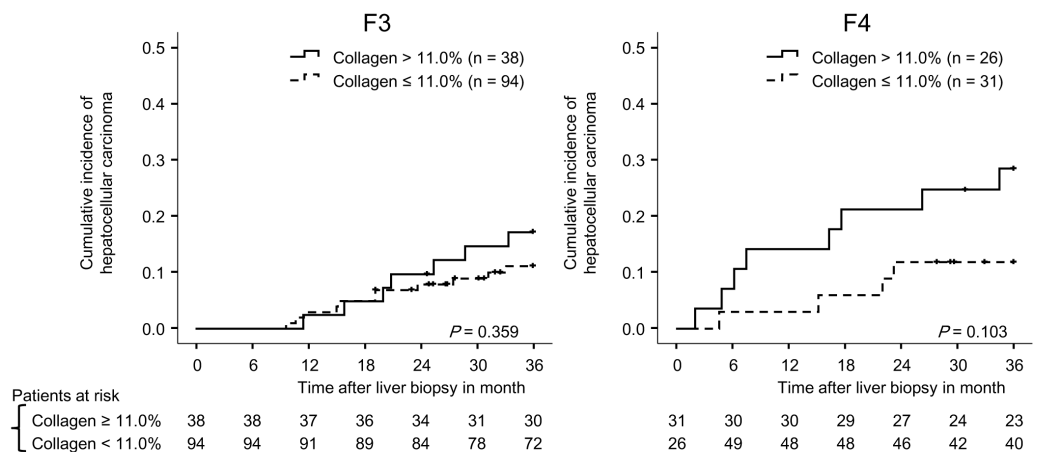
Fig 4. Cumulative incidence of HCC according to fiber content. On panel (A), the cumulative incidence of HCC is compared between patients with high elastin (solid line) and low elastin (broken line). On panel (B), the cumulative incidence of HCC is compared between patients with high collagen (solid line) and low collagen (broken line). Vertical lines indicate censored cases. On panel (C), the cumulative incidence of HCC is compared in three groups divided by collagen and elastin content.

doi:10.1371/journal.pone.0160133.g001

A. HCC development according to elastin fiber stratified by F stage



B. HCC development according to collagen fiber stratified by F stage



C. HCC development according to elastin fiber stratified by collagen fiber

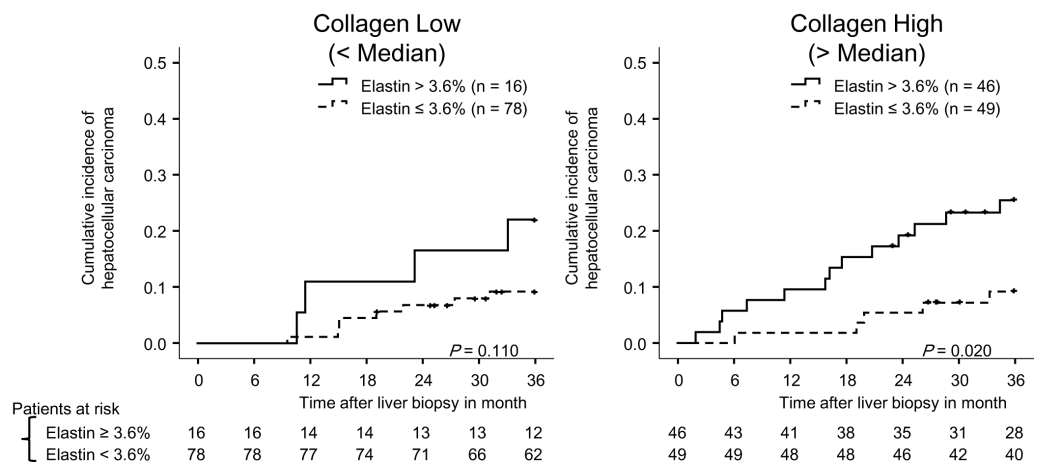


Fig 5. Cumulative incidence of HCC according to fiber content after stratification. Panel (A) compares the cumulative incidence of HCC in patients with high elastin (solid line) and low elastin (broken line) after stratification by METAVIR F stage. Panel (B) compares the cumulative incidence of HCC in patients with high collagen (solid line) and low collagen (broken line) after stratification by METAVIR F stage. Vertical lines indicate censored cases. Panel (C) shows the cumulative incidence of HCC after stratification by collagen. Low and high collagen were separated by median value.

doi:10.1371/journal.pone.0160133.g002

Reference

1. Yasui Y, Abe T, Kurosaki M, Higuchi M, Komiyama Y, Yoshida T, et al. (2016) Elastin Fiber Accumulation in Liver Correlates with the Development of Hepatocellular Carcinoma. PLoS ONE 11(4): e0154558. doi:[10.1371/journal.pone.0154558](https://doi.org/10.1371/journal.pone.0154558) PMID: [27128435](https://pubmed.ncbi.nlm.nih.gov/27128435/)