

Fusion neural networks for plant classification: learning to combine RGB, hyperspectral, and lidar data

Victoria M. Scholl^{1,2}, Joseph McGlinchy¹, Teo Price-Broncucia³, Jennifer K. Balch^{1,2} and Maxwell B. Joseph¹

¹ Earth Lab, Cooperative Institute for Research in Environmental Science, University of Colorado at Boulder, Boulder, Colorado, United States

² Department of Geography, University of Colorado at Boulder, Boulder, Colorado, United States

³ Department of Computer Science, University of Colorado at Boulder, Boulder, Colorado, United States

ABSTRACT

Airborne remote sensing offers unprecedented opportunities to efficiently monitor vegetation, but methods to delineate and classify individual plant species using the collected data are still actively being developed and improved. The Integrating Data science with Trees and Remote Sensing (IDTReeS) plant identification competition openly invited scientists to create and compare individual tree mapping methods. Participants were tasked with training taxon identification algorithms based on two sites, to then transfer their methods to a third unseen site, using field-based plant observations in combination with airborne remote sensing image data products from the National Ecological Observatory Network (NEON). These data were captured by a high resolution digital camera sensitive to red, green, blue (RGB) light, hyperspectral imaging spectrometer spanning the visible to shortwave infrared wavelengths, and lidar systems to capture the spectral and structural properties of vegetation. As participants in the IDTReeS competition, we developed a two-stage deep learning approach to integrate NEON remote sensing data from all three sensors and classify individual plant species and genera. The first stage was a convolutional neural network that generates taxon probabilities from RGB images, and the second stage was a fusion neural network that “learns” how to combine these probabilities with hyperspectral and lidar data. Our two-stage approach leverages the ability of neural networks to flexibly and automatically extract descriptive features from complex image data with high dimensionality. Our method achieved an overall classification accuracy of 0.51 based on the training set, and 0.32 based on the test set which contained data from an unseen site with unknown taxa classes. Although transferability of classification algorithms to unseen sites with unknown species and genus classes proved to be a challenging task, developing methods with openly available NEON data that will be collected in a standardized format for 30 years allows for continual improvements and major gains for members of the computational ecology community. We outline promising directions related to data preparation and processing techniques for further investigation, and provide our code to contribute to open reproducible science efforts.

Submitted 27 January 2021

Accepted 25 June 2021

Published 29 July 2021

Corresponding author

Victoria M. Scholl,
Victoria.Scholl@colorado.edu

Academic editor

Monika Mortimer

Additional Information and
Declarations can be found on
page 18

DOI [10.7717/peerj.11790](https://doi.org/10.7717/peerj.11790)

© Copyright
2021 Scholl et al.

Distributed under
Creative Commons CC-BY 4.0

OPEN ACCESS

Subjects Ecology, Plant Science, Data Mining and Machine Learning, Forestry, Spatial and Geographic Information Science

Keywords Machine learning, Deep learning, Species classification, Remote sensing, Airborne remote sensing, National Ecological Observatory Network, Data science competition, Neural networks, Open science

INTRODUCTION

Understanding the species composition of individual trees within forests is essential for monitoring biodiversity (*Nagendra, 2001; Wang et al., 2010*), invasive species (*Asner et al., 2008; He et al., 2011*), terrestrial carbon (*Schimel et al., 2015; Jucker et al., 2017*), and disturbance regimes (*Kulakowski, Veblen & Bebi, 2003; Senf, Seidl & Hostert, 2017*). Remote sensing enables us to more efficiently map and monitor vegetation than using traditional field-based methods alone, using platforms ranging in scale from drones to satellites carrying a wide variety of sensors (*Kerr & Ostrovsky, 2003; White et al., 2016; Lucash et al., 2018*). Different types of passive and active imaging sensors provide unique information about ecosystems that may be most useful when combined (*Anderson et al., 2008; Tusa et al., 2020*). Multispectral cameras are accessible, affordable and typically require minimal post-processing to be ready for analysis (*Gini et al., 2018; Abdollahnejad & Panagiotidis, 2020*). Hyperspectral data are valuable for their ability to capture spectral signatures beyond the visible wavelengths, which often contain descriptive reflectance characteristics across plant types and conditions (*Dalponte et al., 2012; Ballanti et al., 2016*). Active sensors such as Light Detection and Ranging (lidar) emit pulses of laser light and record the amount and intensity of reflected energy. Lidar data provide structural information about the height, shape, and variability of tree crowns (*Heinzel & Koch, 2011; Koenig & Höfle, 2016*).

Any one data source could be used for plant species classification, but combining information from multiple sources is valuable, albeit difficult (*Torabzadeh, Morsdorf & Schaepman, 2014; Anderson et al., 2008; Asner et al., 2012*). Deep neural networks automatically extract intricate patterns and identify trends from large volumes of data (*LeCun, Bengio & Hinton, 2015*), which makes them useful for classification and data fusion tasks (*Zhu et al., 2017; Ma et al., 2019*), including plant species classification (*Brodrick, Davies & Asner, 2019; Fricker et al., 2019; Zhang et al., 2020; Onishi & Ise, 2021*). At a high level, neural networks are flexible function approximators that learn a mapping from inputs (e.g., spectral or lidar data) to outputs (e.g., species classes), by way of a sequence of matrix multiplications and nonlinearities. By providing different kinds of input to the same network (e.g., a multimodal network that ingests spectral *and* lidar data), neural networks learn how to fuse different data sources, in contrast to more manual approaches in which a human analyst decides how to combine disparate data ahead of time (*Diaz et al., 2020*).

Here we describe the deep learning classification approach used by the Jeepers Treepers team for the Integrating Data science with Trees and Remote Sensing (IDTreeS) 2020 plant classification challenge (<https://idtrees.org>). IDTreeS uses publicly available data from the National Ecological Observatory Network (NEON), funded by the National Science Foundation (NSF) to measure long-term ecological change at 81 field sites in

20 ecoclimatic domains across the United States, Alaska, Hawaii and Puerto Rico (Keller *et al.*, 2008). The NEON data provided for this competition include both field-based plant measurements and airborne remote sensing data products derived from high resolution red, green, blue (RGB) digital camera imagery, hyperspectral imagery across the visible to shortwave infrared wavelengths, and light detection and ranging (lidar) data (Johnson *et al.*, 2010). By participating in an open competition, teams are encouraged to innovate and accelerate their computational methods development (Carpenter, 2011). An earlier iteration of this competition used NEON data from a single forest to convert images into information on individual trees (Marconi *et al.*, 2019), while this 2020 competition used data from three sites to compare how transferable teams' methods were to unseen sites. Classifier transferability to out-of-sample spatial, temporal, and geographic regions is particularly important in cases where data are limited (Wu *et al.*, 2006; Moon *et al.*, 2017). In addition to emphasizing method generalization across sites, this competition tasked teams with designing classification models that can deal with species and genera from outside of the training set. We begin with a description of our data processing steps, then segue into a three stage classification pipeline, and finally report our results along with ideas for future investigation. All of the data and processing tools that we used are open source and publicly available to support and enable reproducible science.

METHODS

Study area

The IDTReeS competition included data from three different NEON domains in the southeastern United States, each with distinct ecological and climatic characteristics (Fig. 1). Ordway-Swisher Biological Station (OSBS) in Florida in the Southeast NEON domain features a mixed forest of hardwood and conifers, mostly dominated by pines. Mountain Lake Biological Station (MLBS) in Virginia in the Appalachians and Cumberland Plateau NEON domain is mainly composed of hardwood trees. Talladega National Forest (TALL) in Alabama in the Ozarks complex NEON domain is dominated by mixed hardwoods and conifers (mostly pine), with a tree species composition that is largely a mixture of species found in OSBS and MLBS. Training data for the competition were provided at two of the three NEON sites, MLBS and OSBS, and then our classification method was evaluated at those two sites in addition to the TALL site (where our classifier has not seen data).

Data processing

The IDTReeS research team provided publicly available geospatial and tabular data for use in this competition (Graves & Marconi, 2020). We processed raw NEON data to generate a feature vector for each individual plant canopy, then passed these vectors to a multimodal neural network (Ngiam *et al.*, 2011) that ultimately makes the taxon predictions (Fig. 2). The raw geospatial data that we used include high resolution orthorectified red, green, blue (RGB) digital camera imagery with 10 cm spatial resolution (NEON.DP1.30010), hyperspectral reflectance data from the NEON Imaging

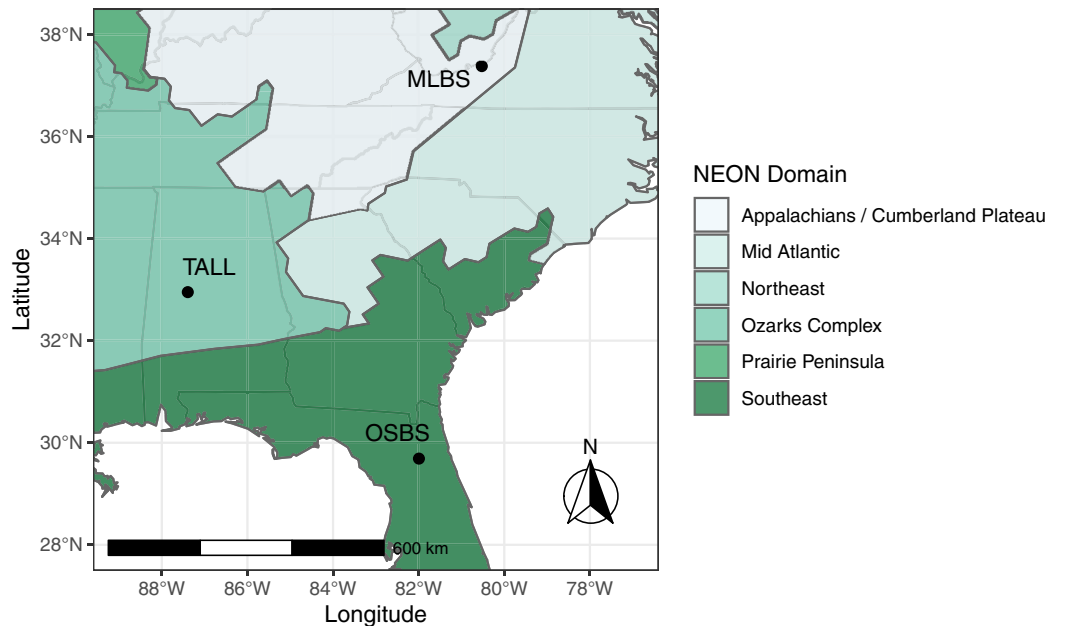


Figure 1 Study Area. The data provided for the tree mapping competition belong to three National Ecological Observatory Network (NEON) sites: Ordway-Swisher Biological Station (OSBS) in Florida, Mountain Lake Biological Station (MLBS) in Virginia, and Talladega National Forest (TALL) in Alabama. The sites span three separate NEON domains in the southeastern United States, each with distinct ecological and climatic characteristics, although the TALL site has a species composition that is largely a mixture of species found in OSBS and MLBS.

Full-size DOI: [10.7717/peerj.11790/fig-1](https://doi.org/10.7717/peerj.11790/fig-1)

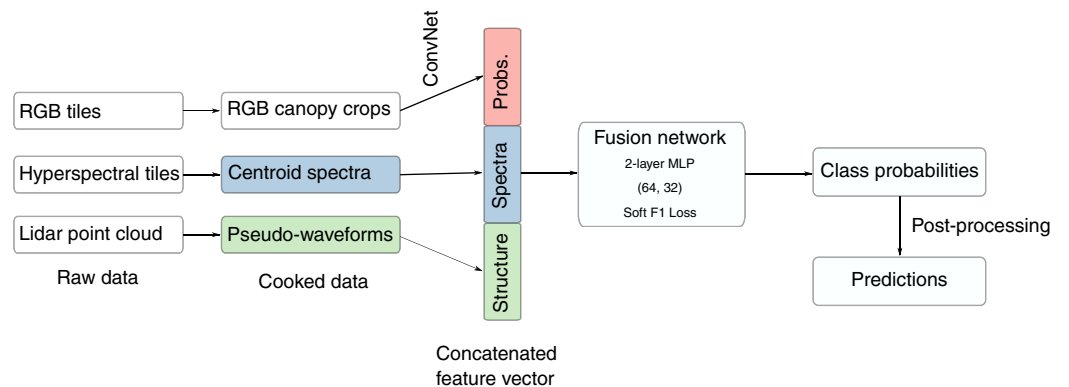


Figure 2 The workflow. We processed raw remote sensing data products into formats that describe the spectral and structural characteristics for each individual plant canopy. We used a pre-trained Convolutional Neural Network (ConvNet) to estimate taxon probabilities using the red, green, blue (RGB) cropped canopy images, and combined these taxon probabilities with hyperspectral reflectance spectra and lidar-derived pseudo-waveforms into a concatenated feature vector. This feature vector was the input to the so-called “fusion network”, a 2-layer multilayer perceptron (MLP) with two hidden layers (size 64 and 32) and trained using a custom “soft F1” loss function, to predict taxon class probabilities for each individual plant. We then applied post-processing including a threshold to assign individuals to an “other” class when the classification confidence was low. Finally, we produced predictions of taxon probabilities.

Full-size DOI: [10.7717/peerj.11790/fig-2](https://doi.org/10.7717/peerj.11790/fig-2)

Spectrometer with 1 m resolution (NEON.DP3.30006), and discrete lidar point cloud data with a point density of ≈ 3.15 points per square meter (NEON.DP1.30003) provided by the IDTreeS competition at each of the NEON ground plots ([Graves & Marconi, 2020](#); [NEON, 2020](#)).

These data products are derived from both active and passive remote sensing systems onboard the NEON Airborne Observation Platform (AOP) to capture the structural and spectral characteristics of vegetation ([Kampe et al., 2010a](#)). The high resolution RGB images are collected by an Optech D8900 digital color camera and capture fine spatial details of the tree crowns across the visible wavelengths ([Gallery et al., 2015](#)). The hyperspectral reflectance data have 426 spectral bands spanning the visible to infrared regions from 380–2,510 nm in increments of 5 nm ([Karpowicz & Kampe, 2015](#)). The lidar data points representing the x, y, z location of surface features and the ground in three-dimensional space were acquired by the Optech Incorporated Airborne Laser Terrain Mapper Gemini instrument with a near infrared laser that operates at 1,064 nm ([Krause & Goulden, 2015](#)). The NEON AOP flies at typical altitude of 1,000 m above ground level and is intended to collect airborne data at each NEON site's peak phenological greenness. These geospatial data products were provided in 20 m \times 20 m tiles representing the size of individual sampling plots.

Woody plant vegetation structure field data (NEON.DP1.10098) in tabular form collected based on NEON's Terrestrial Observation System protocol ([Thorpe et al., 2016](#)) were provided as well, contributing information on individual tree identifiers, sampling locations, and taxonomic species or genera labels. Individual tree crown delineations were generated and provided by the IDTreeS competition research group for the classification task. Each canopy polygon was a rectangular bounding box that represents the maximum crown extent for each individual tree. Each canopy polygon was associated with a record in the NEON field data. We extracted data independently for each mapped tree canopy. First we generated a rectangular RGB image subset for each individual plant by using the provided canopy polygons to crop the RGB image tiles. Then we extracted hyperspectral reflectance data from the spatial centroid pixel within each canopy polygon. Finally, we generated pseudo-waveforms from lidar data by computing the density of point cloud returns within the boundary of each canopy polygon using 39 vertical bins of height. We split the provided data randomly into a training (75%) and initial validation (25%) set so that each individual tree was associated with just one of the data partitions. Note that we used this initial validation set to help tune our RGB classification step in the first stage of our approach. For the final evaluation of our classification method, we were provided with an independent set of data without taxa labels.

Feature extraction from RGB data

We used the cropped rectangular RGB canopy images as input to fine-tune a convolutional neural network (CNN) pretrained on the ImageNet dataset ([Deng et al., 2009](#)). CNNs have been shown effective in classification of high resolution remote sensing images by

Table 1 Taxa included in the training data. Each row represents a unique class for the classifier.

Taxon code	Scientific name	Common name	Count
PIPA2	<i>Pinus palustris</i>	longleaf pine	237
QURU	<i>Quercus rubra</i>	northern red oak	138
ACRU	<i>Acer pensylvanicum</i>	striped maple	104
QUAL	<i>Quercus alba</i>	white oak	86
QULA2	<i>Quercus laevis</i>	turkey oak	59
QUCO2	<i>Quercus coccinea</i>	scarlet oak	39
AMLA	<i>Amelanchier laevis</i>	Allegheny serviceberry	38
NYSY	<i>Nyssa sylvatica</i>	blackgum	33
LITU	<i>Liriodendron tulipifera</i>	tuliptree	16
QUGE2	<i>Quercus geminata</i>	sand live oak	15
MAGNO	<i>Magnolia sp.</i>	magnolia	12
QUMO4	<i>Quercus montana</i>	chestnut oak	10
OXYDE	<i>Oxydendrum sp.</i>	sourwood	9
BETUL	<i>Betula sp.</i>	birch	6
PINUS	<i>Pinus sp.</i>	pine	6
PRSE2	<i>Prunus serotina</i>	black cherry	6
ACPE	<i>Acer rubrum</i>	red maple	5
PIEL	<i>Pinus elliottii</i>	slash pine	4
CAGL8	<i>Carya glabra</i>	pignut hickory	3
FAGR	<i>Fagus grandifolia</i>	American beech	3
PITA	<i>Pinus taeda</i>	loblolly pine	3
QUHE2	<i>Quercus hemisphaerica</i>	Darlington oak	3
ROPS	<i>Robinia pseudoacacia</i>	black locust	2
TSCA	<i>Tsuga canadensis</i>	eastern hemlock	2
ACSA3	<i>Acer saccharum</i>	sugar maple	1
CATO6	<i>Carya tomentosa</i>	mockernut hickory	1
GOLA	<i>Gordonia lasianthus</i>	loblolly bay	1
LYLU3	<i>Lyonia lucida</i>	fetterbush lyonia	1
NYBI	<i>Nyssa biflora</i>	swamp tupelo	1
QUERC	<i>Quercus sp.</i>	oak	1
QULA3	<i>Quercus laurifolia</i>	laurel oak	1

learning textural and spatial relationships through many stages of convolutional filters and pooling layers (Zhu et al., 2017).

We split the individual tree RGB canopy images randomly into training (80%) and validation (20%) subsets to tune the CNN. The RGB data consisted of 1,052 individuals each belonging to one of 31 taxa (Table 1). There was notable class imbalance; approximately one-third of the trees were PIPA2 (*Pinus palustris*, longleaf pine) while many species or genera only had one or two samples represented in the data set.

The size and dimensions of the rectangular canopy polygons were quite variable (Fig. 3). Since the pretrained CNN requires each image to have the same dimensions, we transformed each rectangular RGB canopy cropped image to be 224 × 224 pixels using a

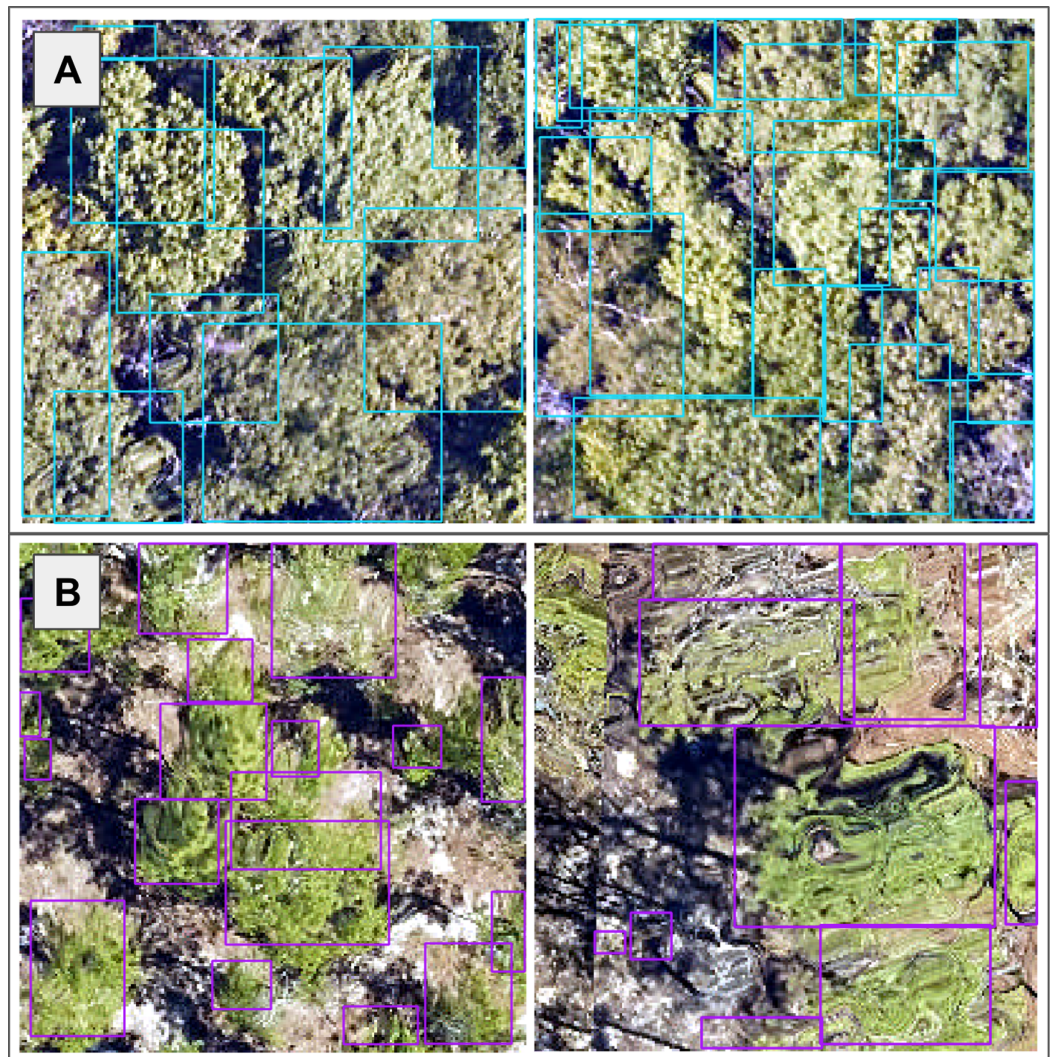


Figure 3 We used the individual tree crown rectangular polygons to clip remote sensing image layers, such as the 10 cm high spatial resolution red, green, blue (RGB) data shown here at the (A) Ordway-Swisher Biological Station (OSBS) and (B) Mountain Lake Biological Station (MLBS) sites. [Full-size !\[\]\(ba1b80118482ccef74a5d718ca4d7242_img.jpg\) DOI: 10.7717/peerj.11790/fig-3](https://doi.org/10.7717/peerj.11790/fig-3)

combination of cropping and resizing, and each image was normalized based on the mean and standard deviation of the ImageNet data set. We labeled each of the resized and normalized RGB canopy images with its respective taxon identification code (Fig. 4).

ResNet evaluation

We tested a series of ResNet CNNs (He et al., 2016) to generate a probability for each taxon class from the RGB image chips. We loaded pretrained weights generated from the ImageNet dataset, using ResNets that varied in depth including architectures with 18, 34, 50, 101, and 152 layer encoders. We compared these different depth ResNets in terms of the macro F1 score, precision, and recall using our validation subset of the RGB data. The summary of these values is presented in Table 2.

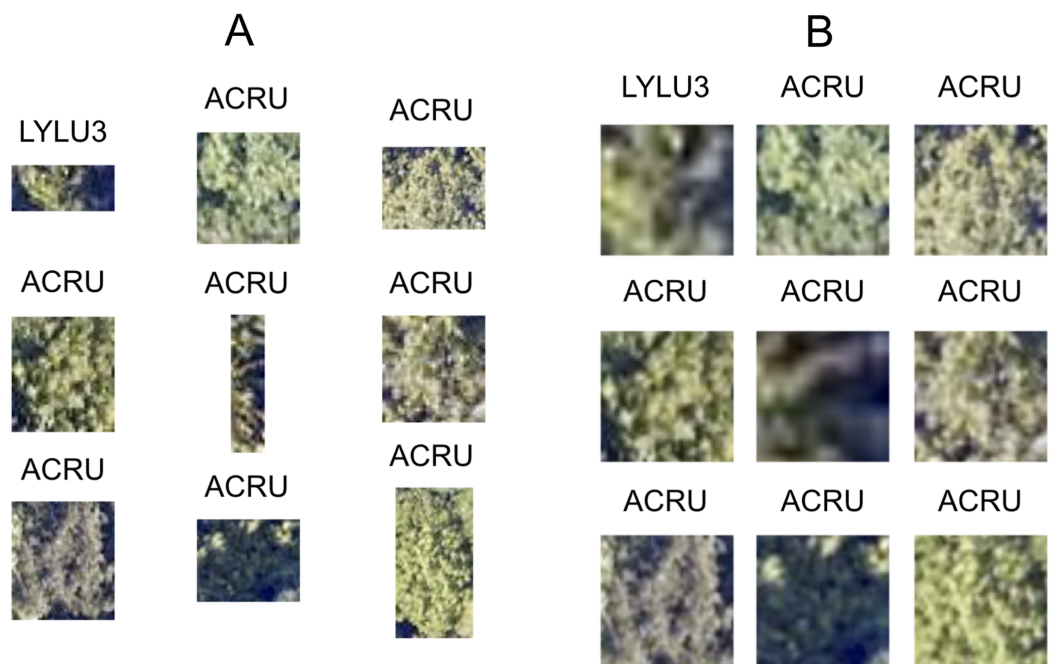


Figure 4 Nine corresponding pairs of RGB image chips, cropped using individual tree crown polygons, with their original crown dimensions (A) and after being resized to 224×224 pixels (B) to yield consistently shaped inputs for the ResNet classifier. Each image chip is labeled with the taxon identification code that corresponds to each individual plant's scientific name.

Full-size DOI: [10.7717/peerj.11790/fig-4](https://doi.org/10.7717/peerj.11790/fig-4)

Table 2 Macro F1 score, precision, and recall values for different ResNet convolutional neural network (CNN) architectures that we tested for the red, green, blue (RGB) image classifier.

Encoder layers	F1	Precision	Recall
18	0.4282	0.3408	0.1642
34	0.4698	0.1909	0.1392
50	0.3463	0.2098	0.1228
101	0.465	0.2916	0.1528
152	0.3867	0.2635	0.1571

In a 2-class problem, precision is the proportion of positive predictions which are actually correct, whereas recall is identifies the proportion of actual positive predictions which are correct. F1 score is the harmonic mean of both precision and recall and was an evaluation metric in the competition. To compute the multi-class value of precision, recall, and F1-score, we computed the average across all classes. The Resnet-34 had the highest F1 score, and was used to generate RGB features for the fusion model.

Pseudo-waveform generation from lidar point cloud

The lidar point cloud contains information on the 3-dimensional structure of tree canopies (*Dubayah & Drake, 2000; Kampe et al., 2010b*). As the laser travels through the canopy during lidar data collection, energy within the beam's footprint is reflected by the top of the

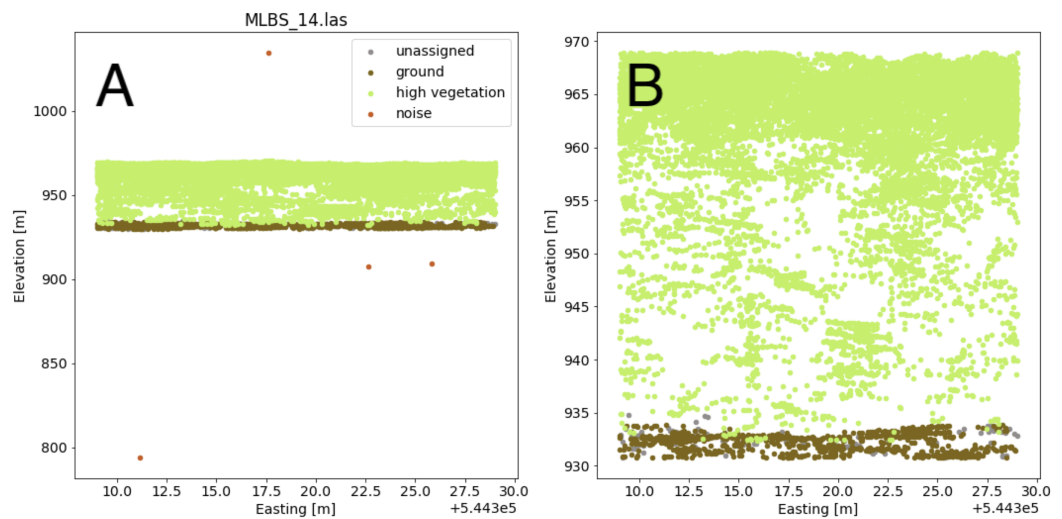


Figure 5 Lidar point cloud showing height anomalies (A) and after height anomalies were removed (B). The point cloud in (B) can be used to generate a pseudo-waveform feature.

Full-size  DOI: 10.7717/peerj.11790/fig-5

canopy, interactions with sub-canopy elements, and potentially the underlying terrain surface. The returned energy waveform is sampled to produce multiple “returns”, points describing the spatial and vertical vegetation structure (Lefsky et al., 2002). The precise 3-dimensional point location is determined by calculating the return time of the reflection from when it was transmitted. Anomalous points can exist, however, and may take the form of points recorded below the ground surface as a result of timing errors in the lidar system due to multiple reflections within the canopy and ground material, or points far above the canopy perhaps due to bird strikes. Often times these points are classified as “Noise” during post-processing, but are not always completely removed. Anomalous points were considered and removed if present by defining valid points as lying between the 1st and 99th percentile of all height values within the point cloud; anomalies were defined as lying outside of those ranges. A comparison showing the point cloud for a single lidar file before and after removing the height anomalies is shown in Fig. 5.

Valid lidar points within each tree crown geometry were used to create a pseudo-waveform for the tree crown which simulates the entire crown’s footprint. Muss, Mladenoff & Townsend, 2011 have shown this representation of the lidar point cloud to give an accurate representation of vegetation structure as a 1-dimensional signal. We define the pseudo-waveform by calculating the density of points within one-meter height bins ranging from zero meters above ground to the maximum height above ground for any given tree in the training data. This resulted in 39 one-meter height bins ranging from 0 to 40 m above ground. Bins with no points were given a point density value of zero. This results in a table where each row represents a 1-d structural signal for each tree crown geometry, which are used as additional features in the fusion network for classification. See Fig. 6 for example pseudo-waveforms and the corresponding point clouds used to generate them.

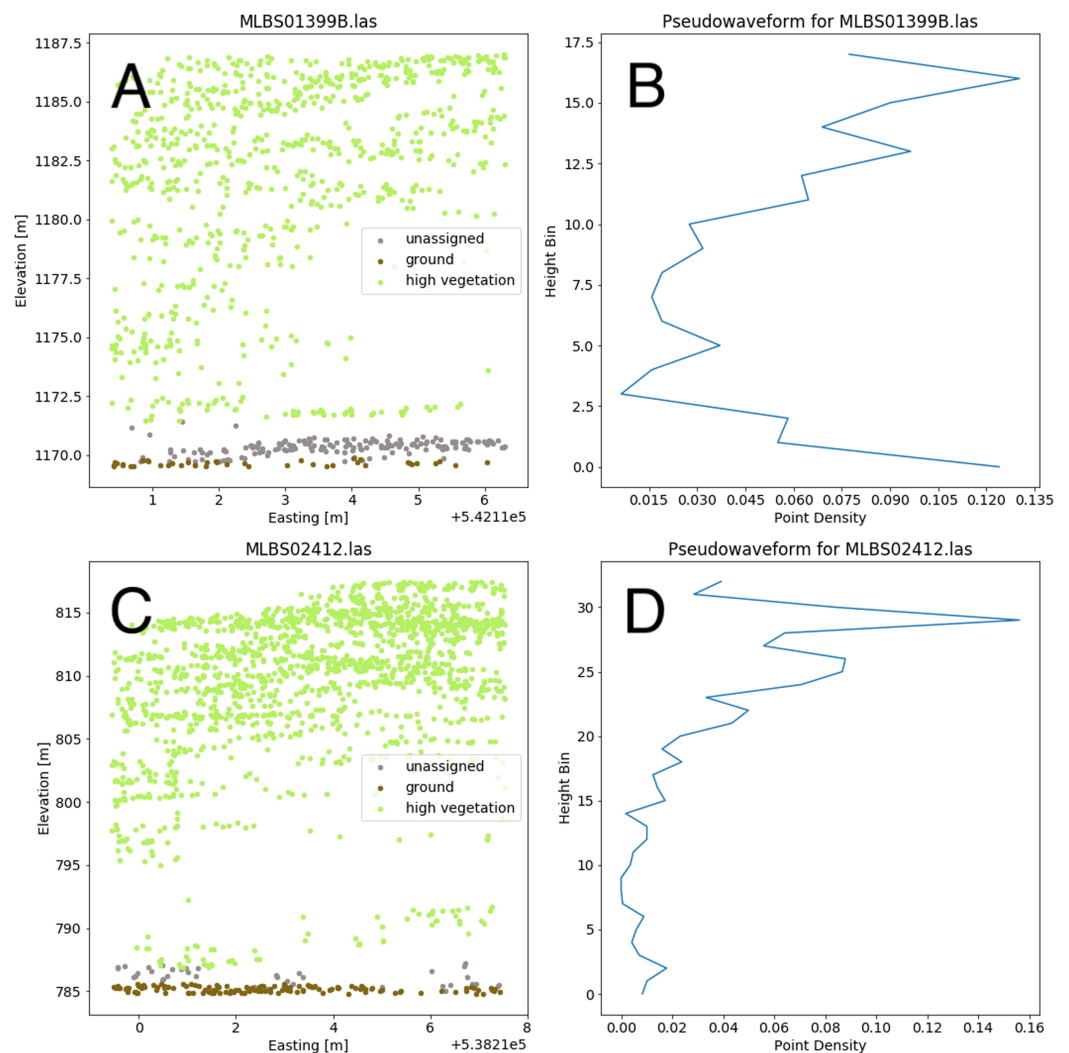


Figure 6 Two examples of different pseudo-waveforms from individual tree crown geometries. Original lidar point clouds (A and C) and corresponding pseudo-waveforms (B and D) showing point density at each height bin. Labels are taken from the “indvdID” field from the training data. Note the difference in height values between the two examples. [Full-size !\[\]\(ba1b80118482ccef74a5d718ca4d7242_img.jpg\) DOI: 10.7717/peerj.11790/fig-6](https://doi.org/10.7717/peerj.11790/fig-6)

The fusion network

To learn how to combine information from the RGB, hyperspectral, and lidar data, we concatenated the probability vectors from the RGB CNN step, hyperspectral reflectance spectra at the centroid of each tree crown polygon, and lidar pseudo-waveforms into a feature vector that was passed as input to a neural network (also known as a multilayer perceptron), the so-called “fusion network” (Goodfellow *et al.*, 2016). The fusion network was relatively shallow with two hidden layers (size 64 and 32). The input to the fusion network was a feature vector with 440 elements: 31 class probabilities from the RGB ConvNet (one per taxon code), 369 reflectance values from the hyperspectral data (one per wavelength after “bad bands” with high noise due to water absorption were removed),

and 40 features from the lidar data (proportions for 39 bins, and the total number of points across all bins). The output of the fusion network was a concatenated vector of taxon probabilities.

In early versions of our model we noticed a tendency to overpredict the most abundant taxa, a problem which we thought might be related to the default cross-entropy loss. We trained the fusion network by minimizing a custom “soft F1” loss function rather than cross-entropy to try to generate predictions that were robust to class imbalance in the training data. Given a classification task with K classes, a length K vector of probabilities θ and a one-hot-encoded vector y of length K , the soft F1 loss can be computed as:

$$L(\theta) = K^{-1} \sum_{k=1}^K 1 - \frac{2\theta_k y_k}{2\theta_k y_k + \theta_k(1 - y_k) + (1 - \theta_k)y_k + \varepsilon},$$

where ε is a fixed small number (e.g., $1e-7$) to prevent division by zero. We used stochastic minibatch gradient descent to minimize the expected soft F1 loss in the training data, using a batch size of 64 examples, averaging loss among examples within each minibatch. The fusion network was trained for 20 epochs using a 1 cycle policy, with a maximum learning rate of $1e-2$. The number of epochs and the maximum learning rate were chosen based on our 20% partition of the training data that were set aside as an initial validation set (Smith, 2018).

Post-processing of fusion network output

To deal with out-of-distribution classes (taxa in the test sites that were not in the training data), we decided to place some probability mass on an “other” class when the model predictions were not confident. If the maximum class probability from the fusion network was less than 0.5, we assigned a probability of 0.5 to the “other” class and renormalized the remaining probabilities so that the entire probability vector summed to one. We chose to use a probability threshold of 0.5 based on qualitative visual inspection of the classification probability histograms.

Implementation

We processed the RGB and hyperspectral data using GDAL (GDAL/OGR contributors, 2020) and R (R Core Team, 2020). Specifically, we used the *neonhs* (Joseph & Wasser, 2020) R package to extract hyperspectral reflectance data at the center of each tree crown polygon. We processed the lidar data in Python (Van Rossum & Drake, 2009). As we split the data generation and processing tasks across members of our team, we worked collaboratively and uploaded files to a shared Google Drive that was readable from Google Colab (Bisong, 2019). We implemented the CNN and fusion network with *fastai* in Google Colab (Howard & Gugger, 2020). The code that we developed for our methods is openly available on GitHub (https://github.com/earthlab/idtrees_earthlab) to be freely used and improved upon by the ecological community.

Tabular model confusion matrix: predicted vs. true label for validation set

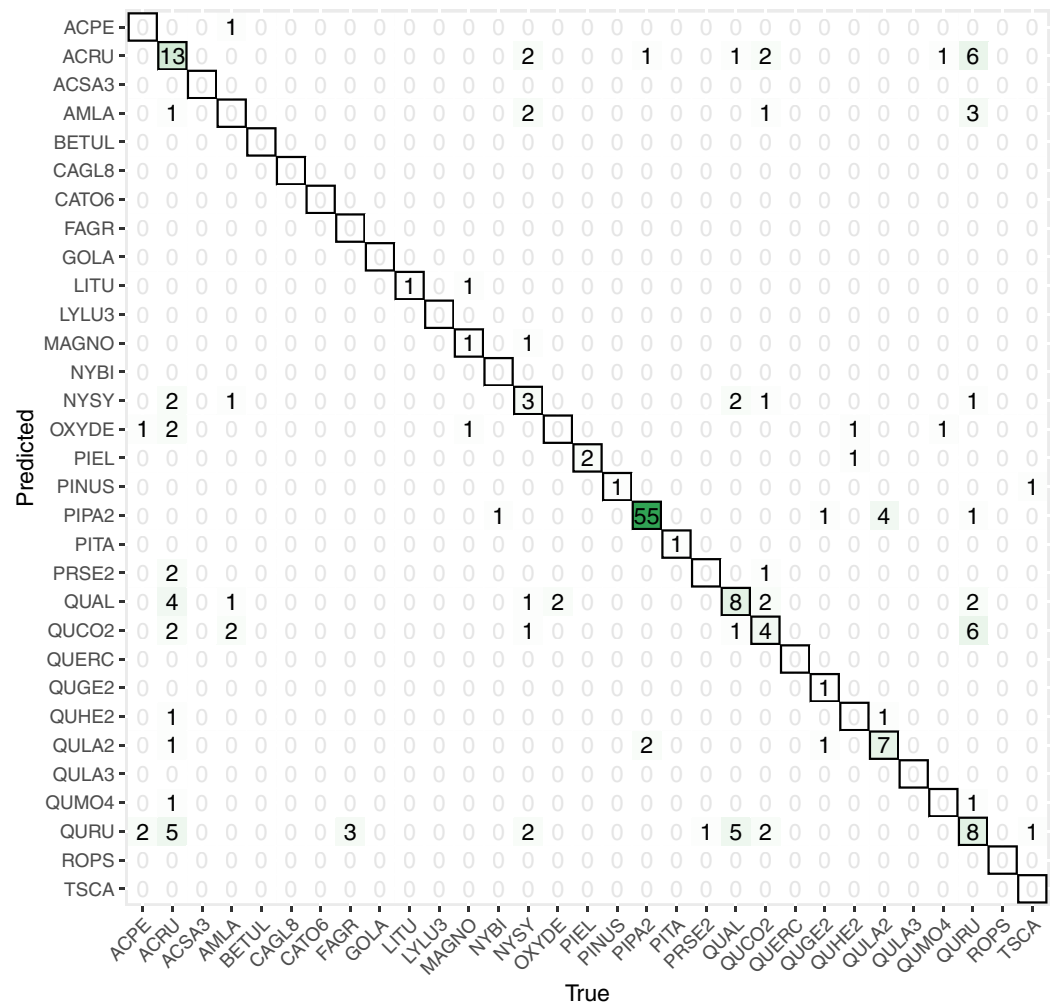


Figure 7 This confusion matrix compares the true and predicted taxon class labels using our tabular classification model. The data used here consist of the 20% validation subset from the training data. Counts along the diagonal indicate correct predictions. [Full-size !\[\]\(95c552df6353b48e62ab71c0e20270ca_img.jpg\) DOI: 10.7717/peerj.11790/fig-7](https://doi.org/10.7717/peerj.11790/fig-7)

RESULTS

While initially developing and assessing our methods, we withheld 20% the training data as an initial validation set, which contained 206 samples spanning all 31 taxon classes. We created a confusion matrix to assess classification accuracy (Fig. 7).

Our initial validation set classification accuracy was 0.51. The taxa with the most accurate predictions in descending order were PIPA2, ACRU, QUAL, QURU, QULA2, QUCO2, NYSY, and PIEL, many of which were among the most abundant in the training data set (Table 1).

For the final competition evaluation, we applied our classifier to a test data set without knowing the true taxon labels. We submitted a file with our predicted probabilities that each individual plant in the test set belonged to each taxon class, including an unknown class, “other”. The IDTReeS competition organizers compared our submitted

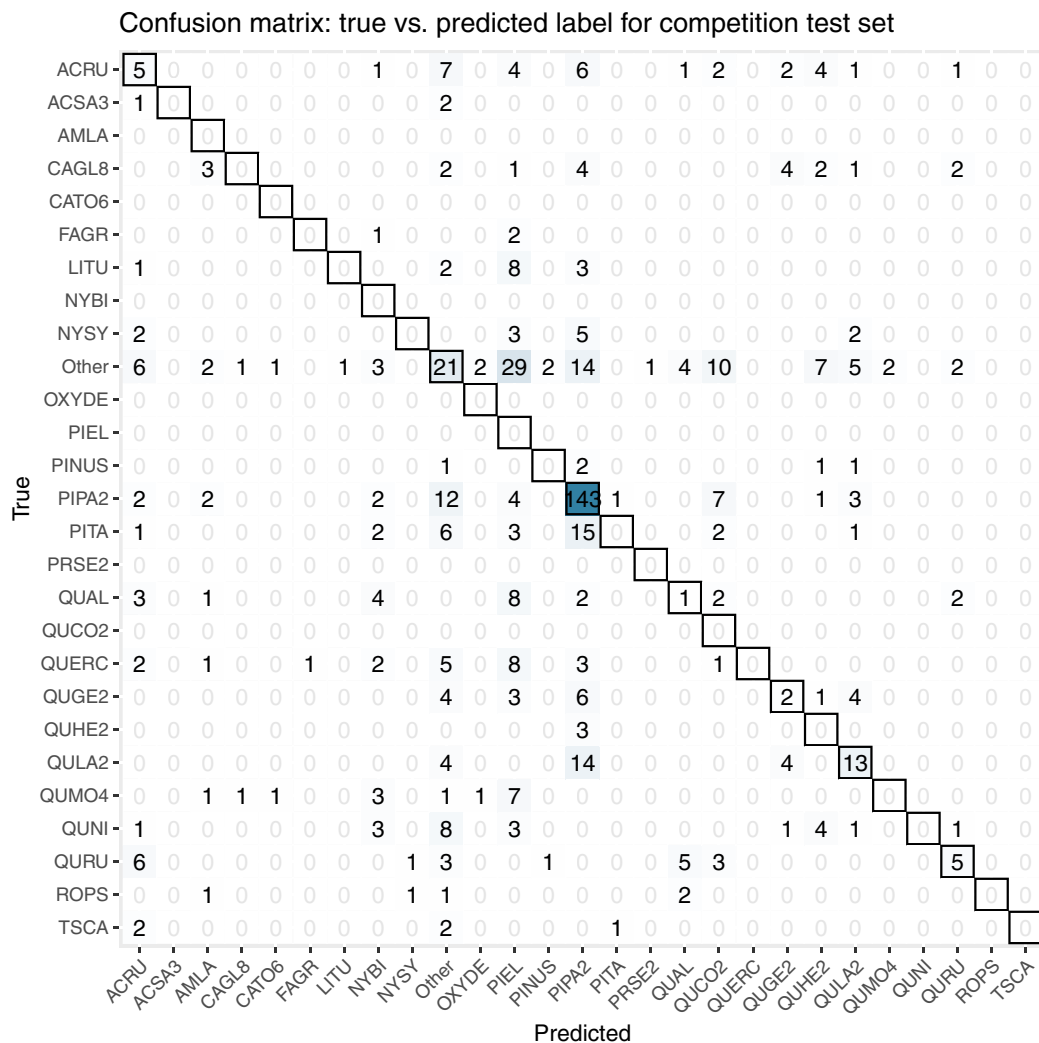


Figure 8 This confusion matrix compares the true and predicted taxon class labels using our tabular classification model. The data used here consist of the test set for the final competition evaluation. Counts along the diagonal indicate correct predictions. [Full-size !\[\]\(ba1b80118482ccef74a5d718ca4d7242_img.jpg\) DOI: 10.7717/peerj.11790/fig-8](https://doi.org/10.7717/peerj.11790/fig-8)

predictions to the true taxon class labels for each tree crown and provided us with a reduced confusion matrix and a corresponding score report based on true class accuracy. The reduced confusion matrix compares the true and predicted labels for each tree, grouping all out-of-sample taxa into a single class called “other” (Fig. 8). This was done to see the direct match between our predictions of the “other” class with the correct label of “other”.

The score report provided based on our predicted taxon labels includes the following metrics calculated using the scikit-learn Python library (Pedregosa et al., 2011): macro average F1 score, weighted average F1 score, and accuracy score from scikit-learn’s “classification_report”. The Macro Average F1 score considers all predictions from all classes when calculating the F1, whereas the weighted average F1 score considers the relative number of samples per class while computing the F1 score. The accuracy score

Table 3 Taxon prediction results summarized by competition evaluation metrics.

Evaluation metric	Score
Macro Average F1	0.07
Weighted Average F1	0.31
Accuracy	0.32
Categorical Cross-Entropy	11.62

Table 4 Full report of competition classification evaluation metrics. These test set results include the classifier total accuracy, Macro F1 score, and weighted average F1 score in bold.

	Precision	Recall	F1-score	Support
ACRU	0.15625	0.147059	0.151515	34
ACSA3	0	0	0	3
AMLA	0	0	0	0
CAGL8	0	0	0	19
CATO6	0	0	0	0
FAGR	0	0	0	3
LITU	0	0	0	14
NYBI	0	0	0	0
NYSY	0	0	0	12
OXYDE	0	0	0	0
Other	0.259259	0.185841	0.216495	113
PIEL	0	0	0	0
PINUS	0	0	0	5
PIPA2	0.65	0.80791	0.720403	177
PITA	0	0	0	30
PRSE2	0	0	0	0
QUAL	0.076923	0.043478	0.055556	23
QUCO2	0	0	0	0
QUERC	0	0	0	23
QUGE2	0.153846	0.1	0.121212	20
QUHE2	0	0	0	3
QULA2	0.40625	0.371429	0.38806	35
QUMO4	0	0	0	15
QUNI	0	0	0	22
QURU	0.384615	0.208333	0.27027	24
ROPS	0	0	0	5
TSCA	0	0	0	5
accuracy	0.324786	0.324786	0.324786	0.324786
macro avg	0.077302	0.069039	0.071241	585
weighted avg	0.304196	0.324786	0.309226	585

calculates the global fraction of correct predictions. Our scores for each of these evaluation metrics are summarized in [Table 3](#), with the full set of scores for each species shown in [Table 4](#).

DISCUSSION

Here we presented our plant taxon classification approach that combines a convolutional neural network (CNN) for RGB images with a downstream fusion network that integrates RGB, hyperspectral, and lidar data. Tree species classification accuracy values vary wildly throughout the literature, based on factors such as the number of species being classified and the types of remote sensing systems that captured the data. For instance, a recent review of 101 studies found reported accuracies ranging from less than 60% to nearly 100% to classify anywhere from a couple to nearly 30 species using combined sensor systems ([Fassnacht et al., 2016](#)).

Our classification workflow combined data from all three National Ecological Observatory Network (NEON) airborne remote sensing systems and yielded an overall accuracy of 0.51 for a subset of the training set and 0.32 for the competition test set. The accuracy values that our method achieved are on the low end of the range reported by [Fassnacht et al. \(2016\)](#), although it is worth noting that our method was tasked with classifying 31 species or genera in addition to identifying a series of unknown species in the final competition evaluation, which exceeds the high end of the number of species that the studies classified in the recent review (from a couple to less than 30). For the five participating teams in this IDTreeS competition, the overall classification accuracy values ranged between 0.32 and 0.47, macro average F1 scores ranged between 0.07 and 0.28, weighted average F1 scores ranged between 0.31 and 0.45, and cross entropy scores ranged between 2.5 and 11.62. While our model did well for common classes, poor performance on rare and out-of-distribution classes was a major limitation. The large difference between the macro average F1 score and the weighted average F1 score for the classifier is indicative of the class imbalance and poor classifier performance for rare classes. [Table 4](#) shows the class imbalance present in the test dataset which is reflected in the test dataset confusion matrix, [Fig. 8](#). Based on the confusion matrices from the training set ([Fig. 7](#)) and test set ([Fig. 8](#)), our model struggled to perform as well at the unseen site and unknown taxon classes. We obtained an overall accuracy of 0.51 when predicting the taxon labels in our 20% withheld from training, which was higher than the overall accuracy of 0.32 reported for the test set, which might be indicative of overfitting on the validation data.

Aside from overfitting, poor performance on out-of-distribution data could be due to dataset shifts or differences at the third NEON site. For instance, we found image artifacts such as distortion or the presence of shadows due to illumination conditions are variable across plots and NEON sites, which are visible in [Fig. 3](#). Lots of distortion was visible in images from the OSBS site, likely an effect of wind during the data collection flight. Note that the presence and appearance of this distortion is not consistent across the images. These artifacts in addition to the highly variable individual tree crown polygons, which we transformed to be squares of uniform size, likely challenged the RGB portion of our classification approach. We discussed the possibility of filtering small or oddly shaped crowns (*i.e.* one pixel wide by six pixels tall) since these shapes may be due to occlusion by neighboring crowns on a per-case basis, and may not necessarily be

representative of that taxon's typical crown dimensions. However, without doing more in-depth analysis about which shapes or dimensions to filter, we kept all individual tree crown shapes in the data set for our analysis.

Poor performance for out-of-distribution data could also be attributed to uncertainty calibration for the "other" class. Our approach to deal with these unknowns was to use a 0.5 certainty threshold to label an individual as "other". We correctly identified 21 of 113 trees with true labels of "other", which amounts to 22% of them. As described in our methods section, our decision to use this 0.5 threshold was based on the distribution of probabilities observed during training. Further tuning or increasing this threshold may lead to better identification of unknown taxon classes in the future.

We spent some time brainstorming different approaches to handle out of distribution classes (taxa present in the test set that were absent in the training data). Our final solution to this (*ad hoc* "other" class predictions) was a much simpler version compared to some of the ideas that we had. Most elaborate among these abandoned ideas was to use K-fold cross-validation to iteratively generate K train/validation splits of the training data, some of which would result in some taxa being only represented in the validation data. Our thought was to try to build a model that was well-calibrated based on this cross-validation, *i.e.*, a model that was able to predict "other" when presented with a taxon that was not represented in the training data.

Related to predictive features to train the classifier, we investigated texture measures from the RGB data as a potential set of features to use as inputs for classification. Preliminary analysis on [Haralick, Shanmugam & Dinstein, 1973](#)), calculated from each tree's gray-level co-occurrence matrix, did not prove separable at the taxon level when considering the training data. A principal components transform ([Rodarmel & Shan, 2002](#)) was applied to the texture feature space, but the transformed axes did not prove separable, either. We also explored dimensionality reduction methods directly with the hyperspectral data, which are commonly used to summarize data from hundreds of highly correlated hyperspectral bands into fewer bands ([Fassnacht et al., 2016](#); [Maschler, Atzberger & Immitzer, 2018](#)). Another approach to perform dimensionality reduction would be to use an auto-encoder ([Wang, Yao & Zhao, 2016](#)). Including additional descriptive features as a result of dimensionality reduction methods like principal component analysis, spectral indices, or targeted feature selection such as specific spectral bands may improve future classifier efforts. Additional ideas for improving classifier performance in the data preprocessing steps include identifying and removing (or utilizing) non-vegetation and shadow pixels ([Mostafa, 2017](#)), which are especially visible in the high spatial resolution RGB images ([Fig. 3](#)).

We made use of the lidar point cloud data by resampling the points into pseudo-waveforms, which allowed us to incorporate information about point density at different heights within the canopy. Future classification methods may benefit from incorporating additional point cloud-derived metrics, such as modeling the shape of the crown, distances between first and last returns, as well as intensity information, although

this may require data with a higher point density (Korpela et al., 2010). The only competition dataset that we did not incorporate into our classifier was the rasterized lidar-derived canopy height model (CHM) (Goulden & Scholl, 2019). The CHM data was at 1 meter per pixel resolution and we felt that it did not provide enough information relative to the other datasets, particularly its cohort of the feature-rich 1 meter hyperspectral imagery. Thus, we made an executive decision to not include the data as the boundaries of the tree crowns as observed in the RGB data (Fig. 3) were much too coarse to justify using the CHM as a means by which to crop any of the other data. However, with higher resolution CHM data or larger crown geometries, we foresee being able to directly use the CHM information about crown geometry to generate better data subsets and extractions for individual trees (Scholl et al., 2020).

Early on in the competition, we discussed the merits of a one- vs two-stage approach for data integration. While we settled on a two-stage approach (CNN to fusion network), a one-stage approach might have been a viable option. In a one-stage approach, we would embed the CNN within the fusion network, and instead of passing the output to a downstream model, we would concatenate the feature vector generated from the convnet with the vector valued features in the fusion network to obtain a model that is end-to-end differentiable. It was not clear that this would result in a better model, but it was clear it would require considerably more effort.

CONCLUSIONS

The IDTreeS 2020 plant classification challenge openly invited teams to create and compare their methods using open-source NEON data. In this paper, we presented the methods and results of the team called *Jeepers Treepers*. We used a two-stage deep learning fusion network approach to combine features from RGB, hyperspectral, and lidar point cloud data to classify taxa at an unseen site featuring unknown species. Creating classification methods that are transferable and generalizeable is no easy task, which made it an interesting topic for this data competition. Overall, we believe that further processing and filtering the RGB images (such as calculating texture metrics and manually removing images containing notable image artifacts or non-vegetation pixels), refining the logic for identifying unknown taxa (when assigning individuals to the “other” class), further addressing the taxon imbalance in the training data set, and incorporating greater data volume and features (such as additional lidar point cloud metrics based on point height and intensity) would improve our classifier’s performance. We see value in the open data-driven competition format to accelerate methods development in the computational ecology field, and encourage others to participate in the future.

ACKNOWLEDGEMENTS

We would like to thank the members of the Earth Lab Deep Learning meet up group for brainstorming about our methods during Spring 2020. We also appreciate the IDTreeS competition organizers’ flexibility and responsiveness during the unprecedented year of 2020.

ADDITIONAL INFORMATION AND DECLARATIONS

Funding

Funding for this work was provided by Earth Lab, through the University of Colorado at Boulder (CU Boulder) Grand Challenge Initiative, and the Cooperative Institute for Research in Environmental Sciences (CIRES) at CU Boulder. The funders had no role in study design, data collection and analysis, decision to publish, or preparation of the manuscript.

Grant Disclosures

The following grant information was disclosed by the authors:
Earth Lab.

Competing Interests

The authors declare that they have no competing interests.

Author Contributions

- Victoria M. Scholl conceived and designed the experiments, performed the experiments, analyzed the data, prepared figures and/or tables, authored or reviewed drafts of the paper, and approved the final draft.
- Joseph McGlinchy conceived and designed the experiments, performed the experiments, analyzed the data, prepared figures and/or tables, authored or reviewed drafts of the paper, and approved the final draft.
- Teo Price-Broncucia conceived and designed the experiments, performed the experiments, analyzed the data, authored or reviewed drafts of the paper, and approved the final draft.
- Jennifer K. Balch analyzed the data, authored or reviewed drafts of the paper, and approved the final draft.
- Maxwell B. Joseph conceived and designed the experiments, performed the experiments, analyzed the data, prepared figures and/or tables, authored or reviewed drafts of the paper, and approved the final draft.

Data Availability

The following information was supplied regarding data availability:

The data is available on Zenodo: Graves, Sarah, & Marconi, Sergio. (2020). IDTReeS 2020 Competition Data (Version 4) [Data set]. Zenodo. DOI [10.5281/zenodo.3700196](https://doi.org/10.5281/zenodo.3700196).

The code is available at GitHub: https://github.com/earthlab/idtrees_earthlab.

REFERENCES

- Abdollahnejad A, Panagiotidis D. 2020.** Tree species classification and health status assessment for a mixed broadleaf-conifer forest with uas multispectral imaging. *Remote Sensing* **12(22)**:3722 DOI [10.3390/rs12223722](https://doi.org/10.3390/rs12223722).

- Anderson JE, Plourde LC, Martin ME, Braswell BH, Smith M-L, Dubayah RO, Hofton MA, Blair JB. 2008. Integrating waveform lidar with hyperspectral imagery for inventory of a northern temperate forest. *Remote Sensing of Environment* **112**(4):1856–1870 DOI [10.1016/j.rse.2007.09.009](https://doi.org/10.1016/j.rse.2007.09.009).
- Asner GP, Jones MO, Martin RE, Knapp DE, Hughes RF. 2008. Remote sensing of native and invasive species in Hawaiian forests. *Remote Sensing of Environment* **112**(5):1912–1926 DOI [10.1016/j.rse.2007.02.043](https://doi.org/10.1016/j.rse.2007.02.043).
- Asner GP, Knapp DE, Boardman J, Green RO, Kennedy-Bowdoin T, Eastwood M, Martin RE, Anderson C, Field CB. 2012. Carnegie airborne observatory-2: increasing science data dimensionality via high-fidelity multi-sensor fusion. *Remote Sensing of Environment* **124**(II):454–465 DOI [10.1016/j.rse.2012.06.012](https://doi.org/10.1016/j.rse.2012.06.012).
- Ballanti L, Blesius L, Hines E, Kruse B. 2016. Tree species classification using hyperspectral imagery: a comparison of two classifiers. *Remote Sensing* **8**(6):445 DOI [10.3390/rs8060445](https://doi.org/10.3390/rs8060445).
- Bisong E. 2019. Google colaboratory. *Building Machine Learning and Deep Learning Models on Google Cloud Platform*. Berkeley: Apress, 59–64.
- Brodrick PG, Davies AB, Asner GP. 2019. Uncovering ecological patterns with convolutional neural networks. *Trends in Ecology & Evolution* **34**(8):734–745 DOI [10.1016/j.tree.2019.03.006](https://doi.org/10.1016/j.tree.2019.03.006).
- Carpenter J. 2011. May the best analyst win. *Science* **331**:698–699 DOI [10.1126/science.331.6018.698](https://doi.org/10.1126/science.331.6018.698).
- Dalponte M, Ørka HO, Gobakken T, Gianelle D, Næsset E. 2012. Tree species classification in boreal forests with hyperspectral data. *IEEE Transactions on Geoscience and Remote Sensing* **51**(5):2632–2645 DOI [10.1109/TGRS.2012.2216272](https://doi.org/10.1109/TGRS.2012.2216272).
- Deng J, Dong W, Socher R, Li L-J, Li K, Fei-Fei L. 2009. Imagenet: a large-scale hierarchical image database. In: *2009 IEEE Conference on Computer Vision and Pattern Recognition*, Piscataway: IEEE, 248–255.
- Diaz J, St. Denis L, Joseph MB, Solvik K, Balch JK. 2020. Classifying twitter users for disaster response: a highly multimodal or simple approach? In: *Proceedings of the Information Systems for Crisis Response and Management Conference (ISCRAM 2020)*.
- Dubayah RO, Drake JB. 2000. Lidar remote sensing for forestry. *Journal of Forestry* **98**(6):44–46.
- Fassnacht FE, Latifi H, Stereńczak K, Modzelewska A, Lefsky M, Waser LT, Straub C, Ghosh A. 2016. Review of studies on tree species classification from remotely sensed data. *Remote Sensing of Environment* **186**:64–87.
- Fricker GA, Ventura JD, Wolf JA, North MP, Davis FW, Franklin J. 2019. A convolutional neural network classifier identifies tree species in mixed-conifer forest from hyperspectral imagery. *Remote Sensing* **11**(19):2326 DOI [10.3390/rs11192326](https://doi.org/10.3390/rs11192326).
- Gallery W, Goulden T, Leisso N, Krause K. 2015. Neon aop digital camera image orthorectification algorithm theoretical basis document (atbd) neon.doc.001211. Boulder: The National Ecological Observatory Network. Available at <http://data.neonscience.org/api/v0/documents/NEON.DOC.001211vA>.
- GDAL/OGR contributors. 2020. *GDAL/OGR geospatial data abstraction software library*. Beaverton: Open Source Geospatial Foundation.
- Gini R, Sona G, Ronchetti G, Passoni D, Pinto L. 2018. Improving tree species classification using UAS multispectral images and texture measures. *ISPRS International Journal of Geo-Information* **7**(8):315 DOI [10.3390/ijgi7080315](https://doi.org/10.3390/ijgi7080315).
- Goodfellow I, Bengio Y, Courville A, Bengio Y. 2016. *Deep learning*. Vol. 1. Cambridge: MIT Press.

- Goulden T, Scholl V. 2019.** Neon ecosystem structure algorithm theoretical basis document. Boulder: The National Ecological Observatory Network. Available at <https://data.neonscience.org/api/v0/documents/NEON.DOC.002387vA>.
- Graves S, Marconi S. 2020.** Idtrees 2020 competition data (version 4). Zenodo. Available at <https://zenodo.org/record/3934932>.
- Haralick RM, Shanmugam K, Dinstein IH. 1973.** Textural features for image classification. *IEEE Transactions on systems, man, and cybernetics* **6(6)**:610–621 DOI [10.1109/TSMC.1973.4309314](https://doi.org/10.1109/TSMC.1973.4309314).
- He K, Zhang X, Ren S, Sun J. 2016.** Deep residual learning for image recognition. In: *Proceedings of the IEEE Conference on Computer Vision and Pattern Recognition*, Piscataway: IEEE, 770–778.
- He KS, Rocchini D, Neteler M, Nagendra H. 2011.** Benefits of hyperspectral remote sensing for tracking plant invasions. *Diversity and Distributions* **17(3)**:381–392 DOI [10.1111/j.1472-4642.2011.00761.x](https://doi.org/10.1111/j.1472-4642.2011.00761.x).
- Heinzel J, Koch B. 2011.** Exploring full-waveform LiDAR parameters for tree species classification. *International Journal of Applied Earth Observation and Geoinformation* **13(1)**:152–160 DOI [10.1016/j.jag.2010.09.010](https://doi.org/10.1016/j.jag.2010.09.010).
- Howard J, Gugger S. 2020.** Fastai: a layered api for deep learning. *Information-an International Interdisciplinary Journal* **11(2)**:108 DOI [10.3390/info11020108](https://doi.org/10.3390/info11020108).
- Johnson BR, Kuester MA, Kampe TU, Keller M. 2010.** National Ecological Observatory Network (NEON) airborne remote measurements of vegetation canopy biochemistry and structure. In: *2010 IEEE International Geoscience and Remote Sensing Symposium*. Piscataway: IEEE, 2079–2082.
- Joseph M, Wasser L. 2020.** neonhs: work with NEON AOP hyperspectral data. R package version 0.0.9999. Available at <https://www.earthdatascience.org/neonhs/>.
- Jucker T, Caspersen J, Chave J, Antin C, Barbier N, Bongers F, Dalponte M, van Ewijk KY, Forrester DI, Haeni M, Higgins SI, Holdaway RJ, Iida Y, Lorimer C, Marshall PL, Momo Séphane, Moncrieff GR, Ploton P, Poorter L, Rahman KA, Schlund M, Sonké B, Sterck FJ, Trugman AT, Usoltsev VA, Vanderwel MC, Waldner P, Wedeux BMM, Wirth C, Wöll H, Woods M, Xiang W, Zimmermann NE, Coomes DA. 2017.** Allometric equations for integrating remote sensing imagery into forest monitoring programmes. *Global Change Biology* **23(1)**:177–190.
- Kampe TU, Asner GP, Green RO, Eastwood M, Johnson BR, Kuester M. 2010a.** Advances in airborne remote sensing of ecosystem processes and properties: toward high-quality measurement on a global scale. In: *Remote Sensing and Modeling of Ecosystems for Sustainability VII*. Vol. 7809. Bellingham: International Society for Optics and Photonics.
- Kampe TU, Johnson BR, Kuester MA, Keller M. 2010b.** Neon: the first continental-scale ecological observatory with airborne remote sensing of vegetation canopy biochemistry and structure. *Journal of Applied Remote Sensing* **4(1)**:043510 DOI [10.1117/1.3361375](https://doi.org/10.1117/1.3361375).
- Karpowicz B, Kampe T. 2015.** Neon imaging spectrometer radiance to reflectance algorithm theoretical basis document. Boulder: The National Ecological Observatory Network. Available at <http://data.neonscience.org/api/v0/documents/NEON.DOC.001288vA>.
- Keller M, Schimel DS, Hargrove WW, Hoffman FM. 2008.** A continental strategy for the National Ecological Observatory Network. *The Ecological Society of America* **6(5)**:282–284.
- Kerr JT, Ostrovsky M. 2003.** From space to species: ecological applications for remote sensing. *Trends in Ecology & Evolution* **18(6)**:299–305 DOI [10.1016/S0169-5347\(03\)00071-5](https://doi.org/10.1016/S0169-5347(03)00071-5).
- Koenig K, Höfle B. 2016.** Full-waveform airborne laser scanning in vegetation studies—a review of point cloud and waveform features for tree species classification. *Forests* **7(9)**:198 DOI [10.3390/f7090198](https://doi.org/10.3390/f7090198).

- Korpela I, Ørka HO, Maltamo M, Tokola T, Hyyppä J. 2010.** Tree species classification using airborne lidar-effects of stand and tree parameters, downsizing of training set, intensity normalization, and sensor type. *Silva Fennica* **44(2)**:319–339 DOI [10.14214/sf.156](https://doi.org/10.14214/sf.156).
- Krause K, Goulden T. 2015.** Neon level 0 to level 1 discrete-return LiDAR algorithm theoretical basis document. Boulder: The National Ecological Observatory Network. Available at <http://data.neonscience.org/documents/10179/11204/NEON.DOC.001292vA/b0e5d4ae-84fa-4eae-8a90-d92f490d3d96?version=1.0>.
- Kulakowski D, Veblen TT, Bebi P. 2003.** Effects of fire and spruce beetle outbreak legacies on the disturbance regime of a subalpine forest in Colorado. *Journal of Biogeography* **30(9)**:1445–1456.
- LeCun Y, Bengio Y, Hinton G. 2015.** Deep learning. *Nature* **521(7553)**:436–444.
- Lefsky MA, Cohen WB, Parker GG, Harding DJ. 2002.** LiDAR remote sensing for ecosystem studies: Lidar, an emerging remote sensing technology that directly measures the three-dimensional distribution of plant canopies, can accurately estimate vegetation structural attributes and should be of particular interest to forest, landscape, and global ecologists. *BioScience* **52(1)**:19–30.
- Lucash MS, Scheller RM, Sturtevant BR, Gustafson EJ, Kretchun AM, Foster JR. 2018.** More than the sum of its parts: how disturbance interactions shape forest dynamics under climate change. *Ecosphere* **9(6)**:e02293.
- Ma L, Liu Y, Zhang X, Ye Y, Yin G, Johnson BA. 2019.** Deep learning in remote sensing applications: a meta-analysis and review. *ISPRS Journal of Photogrammetry and Remote Sensing* **152**:166–177.
- Marconi S, Graves SJ, Gong D, Nia MS, Le Bras M, Dorr BJ, Fontana P, Gearhart J, Greenberg C, Harris DJ. 2019.** A data science challenge for converting airborne remote sensing data into ecological information. *PeerJ* **6(12)**:e5843 DOI [10.7717/peerj.5843](https://doi.org/10.7717/peerj.5843).
- Maschler J, Atzberger C, Immitzer M. 2018.** Individual tree crown segmentation and classification of 13 tree species using airborne hyperspectral data. *Remote Sensing* **10(8)**:1218 DOI [10.3390/rs10081218](https://doi.org/10.3390/rs10081218).
- Moon JB, Dewitt TH, Errend MN, Bruins RJ, Kentula ME, Chamberlain SJ, Fennessy MS, Naithani KJ. 2017.** Model application niche analysis: assessing the transferability and generalizability of ecological models. *Ecosphere* **8(10)**:e01974 DOI [10.1002/ecs2.1974](https://doi.org/10.1002/ecs2.1974).
- Mostafa Y. 2017.** A review on various shadow detection and compensation techniques in remote sensing images. *Canadian Journal of Remote Sensing* **43(6)**:545–562 DOI [10.1080/07038992.2017.1384310](https://doi.org/10.1080/07038992.2017.1384310).
- Muss J, Mladenoff D, Townsend P. 2011.** A pseudo-waveform technique to assess forest structure using discrete LiDAR data. *Remote Sensing of Environment* **115(3)**:824–835 DOI [10.1016/j.rse.2010.11.008](https://doi.org/10.1016/j.rse.2010.11.008).
- Nagendra H. 2001.** Using remote sensing to assess biodiversity. *International Journal of Remote Sensing* **22(12)**:2377–2400 DOI [10.1080/01431160117096](https://doi.org/10.1080/01431160117096).
- NEON. 2020.** *Data Products: DP1.30010.001, DP1.30003.001, DP1.10098.001, DP3.30006.003*. Boulder: Battelle.
- Ngiam J, Khosla A, Kim M, Nam J, Lee H, Ng AY. 2011.** Multimodal deep learning. In: *ICML*.
- Onishi M, Ise T. 2021.** Explainable identification and mapping of trees using UAV RGB image and deep learning. *Scientific Reports* **11(1)**:1–15.
- Pedregosa F, Varoquaux G, Gramfort A, Michel V, Thirion B, Grisel O, Blondel M, Prettenhofer P, Weiss R, Dubourg V, Vanderplas J, Passos A, Cournapeau D, Brucher M, Perrot M, Duchesnay E. 2011.** Scikit-learn: machine learning in Python. *Journal of Machine Learning Research* **12**:2825–2830.

- R Core Team.** 2020. *R: a language and environment for statistical computing*. Vienna: The R Foundation for Statistical Computing. Available at <http://www.R-project.org/>.
- Rodarmel C, Shan J.** 2002. Principal component analysis for hyperspectral image classification. *Surveying and Land Information Science* **62**(2):115–122.
- Schimel D, Pavlick R, Fisher JB, Asner GP, Saatchi S, Townsend P, Miller C, Frankenberg C, Hibbard K, Cox P.** 2015. Observing terrestrial ecosystems and the carbon cycle from space. *Global Change Biology* **21**(5):1762–1776 DOI [10.1111/gcb.12822](https://doi.org/10.1111/gcb.12822).
- Scholl VM, Cattau ME, Joseph MB, Balch JK.** 2020. Integrating National Ecological Observatory Network (NEON) airborne remote sensing and in-situ data for optimal tree species classification. *Remote Sensing* **12**(9):1414 DOI [10.3390/rs12091414](https://doi.org/10.3390/rs12091414).
- Senf C, Seidl R, Hostert P.** 2017. Remote sensing of forest insect disturbances: current state and future directions. *International Journal of Applied Earth Observation and Geoinformation* **60**:49–60 DOI [10.1016/j.jag.2017.04.004](https://doi.org/10.1016/j.jag.2017.04.004).
- Smith LN.** 2018. A disciplined approach to neural network hyper-parameters: Part 1-learning rate, batch size, momentum, and weight decay. Available at <http://arxiv.org/abs/1803.09820>.
- Thorpe AS, Barnett DT, Elmendorf SC, Hinckley E-LS, Hoekman D, Jones KD, LeVan KE, Meier CL, Stanish LF, Thibault KM.** 2016. Introduction to the sampling designs of the National Ecological Observatory Network terrestrial observation system. *Ecosphere* **7**(12):e01627 DOI [10.1002/ecs2.1627](https://doi.org/10.1002/ecs2.1627).
- Torabzadeh H, Morsdorf F, Schaepman ME.** 2014. Fusion of imaging spectroscopy and airborne laser scanning data for characterization of forest ecosystems-a review. *ISPRS Journal of Photogrammetry and Remote Sensing* **97**(4):25–35 DOI [10.1016/j.isprsjprs.2014.08.001](https://doi.org/10.1016/j.isprsjprs.2014.08.001).
- Tusa E, Laybros A, Monnet J-M, Dalla Mura M, Barré J-B, Vincent G, Dalponte M, Feret J-B, Chanussot J.** 2020. Fusion of hyperspectral imaging and LiDAR for forest monitoring. *Data Handling in Science and Technology* **32**:281–303.
- Van Rossum G, Drake FL.** 2009. *Python 3 reference manual*. Scotts Valley: CreateSpace.
- Wang K, Franklin SE, Guo X, Cattet M.** 2010. Remote sensing of ecology, biodiversity and conservation: a review from the perspective of remote sensing specialists. *Sensors* **10**(11):9647–9667 DOI [10.3390/s101109647](https://doi.org/10.3390/s101109647).
- Wang Y, Yao H, Zhao S.** 2016. Auto-encoder based dimensionality reduction. *Neurocomputing* **184**(4):232–242 DOI [10.1016/j.neucom.2015.08.104](https://doi.org/10.1016/j.neucom.2015.08.104).
- White JC, Coops NC, Wulder MA, Vastaranta M, Hilker T, Tompalski P.** 2016. Remote sensing technologies for enhancing forest inventories: a review. *Canadian Journal of Remote Sensing* **42**(5):619–641 DOI [10.1080/07038992.2016.1207484](https://doi.org/10.1080/07038992.2016.1207484).
- Wu J, Jones B, Li H, Loucks OL.** 2006. *Scaling and uncertainty analysis in ecology*. Dordrecht: Springer.
- Zhang C, Xia K, Feng H, Yang Y, Du X.** 2020. Tree species classification using deep learning and RGB optical images obtained by an unmanned aerial vehicle. *Journal of Forestry Research* **148**(3):1–10 DOI [10.1007/s11676-020-01245-0](https://doi.org/10.1007/s11676-020-01245-0).
- Zhu XX, Tuia D, Mou L, Xia G-S, Zhang L, Xu F, Fraundorfer F.** 2017. Deep learning in remote sensing: a comprehensive review and list of resources. *IEEE Geoscience and Remote Sensing Magazine* **5**(4):8–36 DOI [10.1109/MGRS.2017.2762307](https://doi.org/10.1109/MGRS.2017.2762307).