



HHS Public Access

Author manuscript

J Biomech. Author manuscript; available in PMC 2016 April 13.

Published in final edited form as:

J Biomech. 2015 April 13; 48(6): 883–894. doi:10.1016/j.jbiomech.2015.01.032.

American Society of Biomechanics Journal of Biomechanics Award 2013: Cortical bone tissue mechanical quality and biological mechanisms possibly underlying atypical fractures

Joseph R. Geissler, M.S.E.^{a,b}, Devendra Bajaj, Ph.D.^a, and J. Christopher Fritton, Ph.D.^{a,b}

Joseph R. Geissler: geissljr@rutgers.edu; Devendra Bajaj: devendrabajaj@gmail.com; J. Christopher Fritton: chris.fritton@rutgers.edu

^aDepartment of Orthopaedics, New Jersey Medical School, Rutgers University, 205 S. Orange Avenue, Newark, NJ 07103, USA

^bJoint Program in Biomedical Engineering, Rutgers Biomedical and Health Sciences, and the New Jersey Institute of Technology, Newark, NJ, USA

Abstract

The biomechanics literature contains many well-understood mechanisms behind typical fracture types that have important roles in treatment planning. The recent association of “atypical” fractures with long-term use of drugs designed to prevent osteoporosis has renewed interest in the effects of agents on bone tissue-level quality. While this class of fracture was recognized prior to the introduction of the anti-resorptive bisphosphonate drugs and recently likened to stress fractures, the mechanism(s) that lead to atypical fractures have not been definitively identified. Thus, a causal relationship between these drugs and atypical fracture has not been established. Physicians, bioengineers and others interested in the biomechanics of bone are working to improve fracture-prevention diagnostics, and the design of treatments to avoid this serious side-effect in the future. This review examines the mechanisms behind the bone tissue damage that may produce the atypical fracture pattern observed increasingly with long-term bisphosphonate use. Our recent findings and those of others reviewed support that the mechanisms behind normal, healthy excavation and tunnel filling by bone remodeling units within cortical tissue strengthen mechanical integrity. The ability of cortical bone to resist the damage induced during cyclic loading may be altered by the reduced remodeling and increased tissue age resulting from long-term bisphosphonate treatment. Development of assessments for such potential fractures would

© 2015 Published by Elsevier Ltd.

This manuscript version is made available under the CC BY-NC-ND 4.0 license.

Address for correspondence: J. Christopher Fritton, Ph.D., Department of Orthopaedics, Rutgers, the State University of NJ, NJ Medical School, Cancer Center, G-1216, 205 South Orange Avenue, Newark, NJ 07103, USA, Phone: (973) 972-2595, Fax: (973) 972-1875, chris.fritton@rutgers.edu.

Publisher's Disclaimer: This is a PDF file of an unedited manuscript that has been accepted for publication. As a service to our customers we are providing this early version of the manuscript. The manuscript will undergo copyediting, typesetting, and review of the resulting proof before it is published in its final citable form. Please note that during the production process errors may be discovered which could affect the content, and all legal disclaimers that apply to the journal pertain.

Conflict of interest statement

None of the authors has any financial or personal relationships with other people or organizations that could inappropriately influence (bias) this work.

restore confidence in pharmaceutical treatments that have the potential to spare millions in our aging population from the morbidity and death that often follow bone fracture.

Keywords

bone remodeling; osteocytes; osteoblasts; osteoclasts; antiresorptives; osteoporosis

1. Introduction

Relationships between many typical bone fracture types and their mechanisms are well understood, are found in the biomechanics literature, and play an important role in treatment planning. For example, osteoporotic fracture has been associated with decreased bone density at skeletal sites composed predominately of trabecular tissue. Over the past two decades bisphosphonate (BP) therapy has been the gold standard used to reduce osteoporotic fracture risk by suppressing osteoclast-mediated bone resorption. However, increased reports of rare but serious "atypical" femur fracture (AFF) associated with long-term BP therapy have intensified examination by the Food and Drug Administration (FDA) and the orthopaedic research community (Figure 1) (e.g., Lenart et al., 2008; National Guideline Clearinghouse, 2013). This review summarizes work that may hint at the potential underlying mechanisms behind the bone tissue damage that produces this atypical fracture pattern.

2. Fracture classification

Fractures are classified based on location, the estimated energy that produced them and the resulting breakage patterns. Classification criteria inform a great deal about the biomechanical environment prior to fracture. Fractures due to pathologic conditions such as osteoporosis, Paget's disease, osteogenesis imperfecta, rickets or bone cancer are generally closed, have intact overlying skin, and result from low-energy events. Conversely, high-energy impacts often result in open trauma fractures and are classified by the AO Trauma system (Müller, 1980). These typical fractures include those that have at least one large crack that completely traverses all cortices, including the entire width of the bone. The simple fractures are spiral, oblique and transverse. More complex, higher-energy fractures include burst, comminuted with many small bone fragments and/or impacted.

2.1 Osteoporotic fractures and their prevention

Osteoporotic fractures present with typical patterns. They are the result of age-related metabolic bone wasting characterized by highly porous, low density bone ends with reduced bone strength where trabecular structure is predominantly found (Atkinson, 1965). The wasting is due to rates of osteoclastic bone resorption outpacing osteoblastic bone formation, resulting in a highly porous structure. Hip fractures usually result from falls that would not otherwise produce fractures in non-osteoporotic individuals (Sanders et al., 1998). Collapsing crush fractures of the principally cancellous spinal vertebrae are also common with osteoporosis (Kleerekoper et al., 1985).

While osteoporotic fractures normally occur in the predominantly trabecular ends (metaphyseal region), cortical bone also plays a role in the propensity to fracture. Cortical cross-sectional geometry (i.e., bone structure) includes bone width, cortex thickness and distribution of tissue matrix. Bone width and cortex thickness are important to resisting failure by local buckling, as structures buckle when they have a slender aspect ratio (small width to length) (Beck et al., 2001; Giladi et al., 1987). The distribution of bone about the centroidal axis is important because a smaller periosteal versus endosteal adaptive expansion of the cortex offsets a propensity to fragility due to the effect on structural cross-sectional moment of inertia (Ruff and Hayes, 1982; Smith and Walker, 1964). Thus, bone normally adapts to meet biomechanical needs and some of these abilities, such as cortical thickening, may be observed in the pathogenesis of AFF (section 3), possibly with imaging techniques (Section 4).

2.1.1 Bisphosphonate mechanisms of action—BPs are the most commonly prescribed drug for the prevention of osteoporotic fracture (FDA, 2011). By suppressing resorption, BPs and other anti-resorptive agents slow the loss of bone mass at the hip and spine (Rodan and Fleisch, 1996). Consequently, fracture risk is reduced (Seeman and Delmas, 2006). Non-nitrogen containing, first-generation BPs have fallen out of favor, especially in the U.S. because they may affect mineralization, although a few are still used clinically including clodronate (Bayer), etidronate (Warner Chilcott) and tiludronate (Sanofi) (Russell, 2011). Nitrogen-containing BPs administered orally and intravenously (i.v.) have captured the majority of the clinical market. The orals most commonly prescribed are alendronate (Merck, Sharp & Dohme), ibandronate (Genentech) and risedronate (Sanofi), and the most commonly prescribed i.v. administered BPs are pamidronate (Novartis) and zoledronate (Novartis Pharma AG) (Rogers et al., 2011). Many are now becoming available in generic form.

Each BP ultimately acts to slow resorption by osteoclasts (OC). However, osteocytes, the terminally differentiated osteoblasts (OB) embedded in the bone matrix during formation (Figure 2), are now believed to be the primary activators of resorption (section 3.1) (Bonewald, 2011; Schaffler, 2003). Damage may trigger osteocyte apoptosis to signal and target for resorption (Bentolila et al., 1998; Cardoso et al., 2009; Herman et al., 2010; Verborgt et al., 2002). In order for resorption to occur, pre-OCs are recruited to a site at which proliferation and differentiation cues are present to drive the OCogenesis, and the resulting OCs have to attach onto exposed mineral and begin normal bone resorption (Burr, 2002; Parfitt, 2002). BPs exploit the mechanism by which OC membrane rigidity is regulated through cholesterol synthesis for attachment of the OC to bone and push OCs toward apoptosis, thus altering osteoclast activity (Rogers et al., 2011), so less bone is removed and the normal, coupled-action of OBs to form new bone and fill the OC pits is lower (Parfitt, 1982). Thus, long-term BP treatment may affect bone quality through many bone multi-cellular unit (BMU)-related cortical tissue features, including a flux in osteocyte numbers (section 3.1.1).

Suppression of bone resorption and remodeling initially alters tissue-level micro-architecture and composition positively, most notably by slowing the loss of trabecular micro-architecture, quantified as number, thickness and interconnectedness of plate-like and rod-

like elements (Boivin et al., 2000). Suppression of resorption may also have added biomechanical effects by allowing OB to more completely fill existing resorption cavities, in addition to the prevention of new stress risers that resorption cavities may eventually become, especially in cancellous bone (Dempster, 2003; Easley et al., 2012; McNamara et al., 2006). Regardless of mechanism(s), the short-term benefit of BPs is clear as large randomized trials have demonstrated that BPs greatly reduce osteoporotic fracture risk (Black et al., 1996).

2.2 Stress fractures

Since some retrospective assessments of atypical fractures propose similarities with common stress fractures, research in that field may yield potential mechanisms (Lappe et al., 2005; Schilcher and Aspenberg, 2009). While some similarities exist, stress fractures are different from pathologic and traumatic fractures. Stress fractures typically occur as a result of excessive loading cycles ("fatigue") within healthy bone tissue and may be exacerbated in lesser quality ("insufficient") bone (Giladi et al., 1987; McKenna et al., 2014; Shane et al., 2014). While insufficient-type stress fractures have been observed in patients with osteomalacia and hypophosphatasia, fatigue-type stress fractures are solely observed in high load-bearing sites like the femur, tibial shaft (most frequent), metatarsals and calcaneus. Fatigue fractures are a result of repetitive activity in high-performance athletes, including runners and race horses, and elevated activity for military recruits when their training begins (Giladi et al., 1987).

Stress fractures normally present oblique to the diaphysis when incomplete, affecting a single cortex within the shaft of long bones (Shane et al., 2014). They are associated with a painful, periosteal healing response with cortex thickening acting to attempt a stabilization of the fracture gap. A similar generalized cortical thickening has been observed prior to some AFFs and is classified as a minor feature that may be due to a localized periosteal reaction of the lateral cortex (Shane et al., 2014). In the case of a stress fracture such a callus formation is usually followed by normal bone remodeling and healing if the repetitive activity that is the root cause of the fracture is eliminated (McKenna et al., 2014). Likewise, unless normal remodeling is restored after an initial AFF indicator, such as cortical thickening, the deficit may allow progression to fracture.

2.3 Atypical fractures

Recently, a subset of mainly female osteoporotic patients on long-term anti-resorptive therapy, principally with BPs, has sustained fractures with a pattern that is atypical of osteoporotic, traumatic or stress fractures. Differences from stress fractures are fewer and include location, angle of progression across the cortex and activity level of the presenting patient (Shane et al., 2014). These atypical fractures may start as an incomplete transverse fracture (Figure 3) that sometimes advances to a complete fracture through all cortices of the subtrochanteric or diaphyseal femur. The ulna has been recently proposed as another site of atypical fracture in isolated clinical case studies (Ang et al., 2013; Bjorgul and Reigstad, 2011; Tang and Kumar, 2011). Additionally, in some retrospective reviews, approximately 20% of patients exhibiting an atypical fracture have a similar bi-lateral finding, usually at the same location on the contralateral limb at first clinical presentation or within a short

window of < 6 months. One possible explanation for this type of fracture is that over many years of treatment, bone tissue treated with BPs may age differently, with lower tissue turnover than in the drug-naïve condition. Eventually, the rate of damage initiation and accumulation may outpace the suppressed remodeling process, and mechanical integrity becomes compromised.

The uncommon features of these fractures have raised concern for long-term effects on bone health due to the use of BPs. Many clinical reports, meta-analyses and reviews of BP-associated atypical fracture cases have been published since the first recognition of this problem in 2008 (Gedmintas et al., 2013; Lenart et al., 2008; Lenart et al., 2009; Neviaser et al., 2008). In response, an American Society for Bone and Mineral Research (ASBMR) task force recently reviewed all literature pertaining to reports of AFF, demonstrating the most common presentation location along the lateral cortex of the femoral diaphysis, outside of the neck and/or intertrochanteric regions with a transverse orientation or "short oblique" (<30 degrees from a transverse plane) trajectory (Figure 3) (Shane et al., 2014; Shane et al., 2010). The radiographic features also demonstrate localized periosteal or endosteal thickening of the lateral cortex at the site of initial fracture (cortical beaking or flaring) and non- or minimal comminution, i.e., few fragments. A minor feature of AFF, groin or thigh pain, is a symptom causing patients to seek additional medical attention prior to experiencing a complete fracture. While the ASBMR report concluded an association with BP use, osteonecrosis of the jaw (ONJ) was only briefly addressed as a problem related to BPs, principally associated with high-dose cancer treatments (Allen and Burr, 2009; Compston, 2011; Subramanian et al., 2013). High-dose BPs are effective treatments to prevent cancer metastases to bone and have had similar incidences of ONJ in cancer trials (1–2% of patients) that appear to be a consequence of marked inhibition of bone resorption (Cleazardin et al., 2011; Gartrell et al., 2013; Saad et al., 2012; Woo et al., 2006). Though they exist, there are few reports of AFF in the cancer population on high-dose BPs (Chang et al., 2012; Grasko et al., 2009; Hayashi et al., 2014; Iwata et al., 2014; Puhaindran et al., 2011; Waterman et al., 2011; Wernecke et al., 2008). One plausible reason may be the relatively short amount of time that cancer patients have been maintained on BPs due principally to the morbidity and guarded life expectancy for patients with metastatic bone disease (Saad et al., 2012). Meanwhile, the incidence of BP-associated AFF increases with long-term use (>3–5 years); dose time may have a large influence on this side effect (Abrahamsen et al., 2009; Dell et al., 2012; FDA, 2011; Lenart et al., 2009; Shane et al., 2014). Thus, whether the advent of new therapeutic options that allow cancer patients longer life will lead to greater reports of AFF remains to be seen. Mechanisms behind AFF and ONJ may also be un-related and cancer patients likely maintain a lower level of physical activity than that expected to lead to any type of long-bone fracture.

3. Possible mechanisms for AFF: Biological, biochemical and biomechanical damage to bone

There is a clear lack of understanding with regards to the mechanism(s) behind atypical fracture (Shane et al., 2014). However, the functions of bone are well recognized: to provide mechanical stability and mineral homeostasis, allowing for locomotion and ion exchange.

Bone's properties thus rely on tight regulation of biological and biochemical processes. If man-made, bone would be considered one of the most technologically-advanced, tough composite materials, designed to withstand cyclic loading and dissipate energy. The main advantage of bone tissue over artificial materials is that damage accumulated is repaired via intrinsic mechanisms during remodeling (Figure 2) (Currey, 1999; Martin et al., 1998; Recker, 1983; Schaffler and Burr, 1988).

In the case of the adult taking a BP, the primary effect is on bone tissue turnover. As recently demonstrated, the tissue renewal process is dependent on damage cues from the local cells (osteocytes), and there are several direct influences of the BPs (Aguirre et al., 2006; Manolagas and Parfitt, 2013; Nakashima et al., 2011; Schaffler et al., 2014). While this review focuses on these cell- and tissue-level bone quality effects, cells and tissue will be subject to differing stress distributions based on whole-bone structure, including femoral-shaft curvature and offsets from lines of force application (i.e., femoral-neck length and angle). The cortices of many long bones, including the femoral shaft, have a natural curvature. Thus, some have argued that patients of Asian ancestry with a larger natural curving bow to their femoral shaft are at greater risk of atypical fracture (Sasaki et al., 2012; Shane et al., 2014).

3.1 Osteocyte damage

Osteocytes and their cellular processes in the lacunar-canalicular pores establish a dense communication network that is vital for nutrient and gas exchange. This network also establishes a highly sensitive mechanosensory system (Cowin et al., 1991; Wang et al., 2000). Upon incorporation into the matrix, osteocytes form cellular protrusions that function as connections between the cytoplasm of neighboring osteocytes. Each osteocyte has at least 50 processes with the potential to directly contact a neighbor (for reviews, see (Bonewald, 2011; Manolagas and Parfitt, 2013; Schaffler et al., 2014)) (Beno et al., 2006; Kerschnitzki et al., 2013). Osteocyte processes connect directly by multi-pass transmembrane proteins, primarily connexin 43 (Cx43), located at the ends of the processes, that tightly regulate active transport of nutrients, metabolites, signaling ions (including Ca^{2+}), small molecules and possibly RNA from one cell to another (Doty, 1981; Harris, 2007). Gap junction intercellular communication in response to anabolic agents (PTH) appears to be decreased as the age of the animal from which cells are isolated increases, independent of the ability of cells to produce Cx43 (Genetos et al., 2012). Paracrine and endocrine communication also occurs outside the osteocyte through the fluid-filled lacunar-canalicular network; exported from the cell are signaling molecules such as receptor activator of nuclear factor- κ B ligand (RANKL) and Ca^{2+} , released through un-paired Cx43 hemi-channels and other Ca^{2+} -specific channels (Ke et al., 2013). Thus, mechanisms of cell signaling, both direct and indirect, occur in continuous passageways and are vital to the maintenance of osteocytes and good bone tissue quality.

Damage to cells constantly occurs within bone and also may result from disruption of the processes, affecting cell-to-cell signaling. As in most cells, osteocytes accumulate damage to their intra-cellular machinery due to the normal aging processes of oxidation and telomere shortening that eventually leads to death (Almeida et al., 2007; Nojiri et al., 2011). Rarely,

osteocyte death is by overwhelming rupture of the cell body. Normally, osteocyte death occurs in a regulated fashion, by apoptosis (Bonewald, 2011; Manolagas and Parfitt, 2013; Schaffler et al., 2014). Estrogen withdrawal, loss of normal mechanical loading, accumulation of advanced glycation end (AGE) products or direct, mechanically-induced tissue damage accelerate this apoptosis (Aguirre et al., 2006; Burr et al., 1985; Follet et al., 2007; Schaffler and Kennedy, 2012; Tomkinson et al., 1998).

3.1.1 Anti-apoptotic effects of bisphosphonates: Is a long life best?—BPs may have both short-term and long-term effects on osteocytes. Certainly, in the short-term BPs are anti-apoptotic for osteocytes (Loiselle et al., 2013; Plotkin et al., 2008; Plotkin et al., 1999). Possibly, this action involves the Cx43 hemi-channels that are independent of gap junctions (Bellido and Plotkin, 2011; Plotkin et al., 2005; Plotkin et al., 2002).

For any anti-resorptive therapy a long-term consequence of reducing osteocyte apoptosis and OC resorption may be that the average age of the osteocyte population increases as there is a lower demand for new cells. After the initial closure of the remodeling space with the OB more completely filling existing resorption pits, a smaller amount of matrix is laid down for mineralization upon each remodeling activation cycle (Allen et al., 2010; Bajaj et al., 2014). Thus, one possible consequence to the sparing of osteocytes by reduced resorption is increased cell aging. Yet, even this long-lived (decades) cell has a limited lifespan so that eventually death ensues (Dallas et al., 2013). If this death occurs without replacement, the logical eventual outcome is decreased osteocyte density. This less cellular tissue would have decreased sensitivity to mechanical loading and damage, raising the possibility that osteocyte density helps determine bone tissue properties (Vashishth et al., 2002; Vashishth et al., 2000). Indeed, a decline in osteocyte and lacunar density has been associated with aging, increased risk of osteoporotic fracture, and estrogen withdrawal (Frost, 1960a; Mullender et al., 1996; Qiu et al., 2002; Qiu et al., 2003; Tomkinson et al., 1997; Wong et al., 1985).

We recently reported osteocyte lacunae density, tissue mechanical properties under fatigue loading, and tissue micro-structure (section 3.2) of cortical rib bone from female beagles treated for 3 years with two different doses of alendronate or saline control (Bajaj et al., 2014). The alendronate doses tested were 0.2 and 1.0 mg/kg/day, chosen to correspond to those used clinically for the treatment of postmenopausal osteoporosis (low-dose) and Paget's disease (high-dose), respectively. Tissue was bulk stained in 1% basic fuchsin, embedded in polymethyl-methacrylate, cut transverse to the bone long axis and imaged under bright-field microscopy. We found the density of osteocyte lacunae was reduced (~20%) by the same degree for both doses of alendronate (Bajaj et al., 2014). Our findings were similar in both the osteonal and interstitial space of the rib. However, our histological technique did not discriminate between possibly empty versus "missing" lacunae, due to either poor tissue construction or infilling after osteocyte death. Utilizing high-resolution (1 μm) 3D synchrotron μCT to separate porosity fractions, (Tommasini et al., 2012) recently found a similar (~16%) reduction in the density of osteocyte lacunae with 6-month alendronate treatment, equivalent to our low-dose group, 1 month after the ovariectomy (OVX) of rat. Their comparisons were to the non-treated, young, OVX, while ours were to non-treated, age-matched adult controls. So, in addition to species and cortical bone-type

differences, these similar results may be due to many factors other than the drug treatment. There are no other osteocyte evaluations of models on long-term BP treatment for comparison, and while we attempted to relate our findings to tissue mechanical properties (section 3.2), others have not done that to date.

3.2 Cortical bone tissue damage

Functioning as one mechanism for energy dissipation, micro-cracks initiate, accumulate and effectively distribute the applied daily cyclic loads such that one single loading event does not cause fracture (Frost, 1960b; Mori et al., 1997; Schaffler et al., 1995; Wenzel et al., 1996). Fatigue-induced micro-cracks compromise mechanical integrity, tend to be restricted to more densely-mineralized older-bone tissue and are capable of signaling the remodeling process (Burr et al., 1998; Carter et al., 1976; Hoshaw et al., 1997; Parfitt, 2002; Patten et al., 1996; Qiu et al., 2005; Schaffler et al., 1990). To prevent fracture, cracks are removed through the process of bone remodeling (Figure 2). In the same beagle model (section 3.1.1) in which osteocyte lacunae were reduced, increases in the average length (25%) of micro-cracks with BP treatment were evident within cortical bone of the rib after one and three years (Allen et al., 2008b; Mashiba et al., 2000). This aspect of micro-damage, and no other, including the density of cracks ($\#/mm^2$), has been found consistently altered in cortical bone with BP treatment in this model.

Obviously, not all aspects of the human condition are recapitulated in the beagle model and any extrapolations should be made in a cautionary light. However, iliac biopsies of osteoporotic women on BP treatment have demonstrated differences in cortical matrix composition (greater mineral crystal homogeneity) (Donnelly et al., 2012a) and lower toughness, or the amount of energy absorption to fracture (Tjhia et al., 2012). Greater homogeneity at many levels of the hierarchical structure of bone tissue are associated with bone tissue aging, greater damage and lower toughness (Akkus et al., 2003; Zimmermann et al., 2011).

Estimates from simple, mono-tonic, quasi-static bending of whole beagle rib suggest that the increased crack length in alendronate-treated cortical bone is associated with a reduction in tissue-level toughness (Allen et al., 2008b). These and other studies with BP-treated beagles have demonstrated increased stiffness, or initial resistance to a mechanical load, as expected due to the beneficial effects of BPs. However, the BP treatment also decreased toughness, as estimated from whole-bone mechanical testing, more significantly so for the higher doses and longer durations tested (Allen and Burr, 2007; Allen et al., 2006; Komatsubara et al., 2003; Mashiba et al., 2001). More direct, tissue-level tests on machined specimens from bone tissues of BP-treated animals and patients have also suggested lower toughness (Tang et al., 2009; Tjhia et al., 2012). Furthermore, the modulus determined at the calcaneus with ultrasound was significantly lower among women on long-term (>3 years) versus shorter BP therapy and both treatment groups had lower modulus (normalized to density) versus non-treated osteoporotics (Richer et al., 2005).

Since loading conditions *in vivo* are cyclic, we sought to determine the mechanical properties of long-term, BP-treated adult female beagle bone subjected to fatigue (Bajaj et al., 2014). After treatment for 3 years (section 3.1.1), we machined prismatic beams of

rectangular cross-sectional geometry (1.5 mm × 0.5 mm) and 10–12 mm length from rib cortices. The long-axis of osteons was oriented parallel to the beam length. Our cyclically loaded beams demonstrated an increasing dose-response decline in number of loading cycles to failure under 4-point bending. Furthermore, a positive relationship was established between osteocyte lacunar density and the initial elastic modulus (E_i) measured within the first few loading cycles of the fatigue test.

The possible mechanisms accounting for lower osteocyte density affecting material properties includes an impaired detection of damage by osteocytes at the cement line (section 3.2.1) or within the rest of the tissue, and a loss of structural (lacunae and canaliculae) discontinuities in the matrix (Skedros et al., 2011). We hypothesize that degradation in damage detection at the cement line could occur through loss of the canalicular supply chain since the osteocytes near the cement line are the furthest away from a nutrient blood vessel of the Haversian system. The damage regulation role of the osteocyte lacunar-canalicular system has been hypothesized to be due to the structural discontinuities in mineralized tissue that serve a toughening role. Toughness is also attributed to the altered mineralization around the cement line and alternating lamellae of the osteon that provide ductile interfaces to slow crack growth (Burr et al., 1988; Lakes and Saha, 1979; Schaffler et al., 1987; Skedros et al., 2005).

3.2.1 Bone tissue as a viscoelastic, damaging material—Osteons, representing the youngest and least mineralized of the heterogenous bone tissue, provide an attractive sink for cracks that initiate in the interstitial regions oriented toward the cement line (Carter and Hayes, 1976; Schaffler et al., 1989). Differences in tissue modulus are responsible for this property; as the osteons age, and become more mineralized with greater modulus, the preference for crack directionality to cement lines is lost and cracks are repelled into the interstitial space (Lakes and Saha, 1979; Thompson, 1980). This suggests that as the overall age of osteons increases, the toughness of cortical bone tissue is both decreased and the location where cracks might be detected is changed. In addition to lower osteocyte lacunae density, E_i and fatigue cycles to failure found in 3-year, BP-treated beagle rib, we found osteonal cross-sectional area, determined by the vigor of the bone resorption phase of remodeling, to be reduced by approximately 14%. However, this was the case for the high-dose treated group only (Bajaj et al., 2014). A similar finding of reduced depth of BMU resorption cavities within trabecular bone in this beagle model, also only found with high-dose treatment, supports this cortical data (Allen et al., 2010). Therefore, both the numbers of new rib cortical osteons formed over the 3-year treatment period, estimated from the activation frequency of calcein-labeled osteons formed over the last 2 weeks of life to be approximately 60% of the total number of osteons, and the size of those newly formed osteons were reduced significantly with the high-dose alendronate treatment (Allen et al., 2006; Allen et al., 2008b; Bajaj et al., 2014; Mashiba et al., 2000).

Decreases in the resorption width dug by the osteoclasts of BMUs decrease the average osteon area and total cement line perimeter (Figure 4) and fail to decrease or replace the interstitial, oldest bone area, where most micro-cracks initiate and lengthen (Allen et al., 2010; Bajaj et al., 2014; Skedros et al., 2005). If osteon density remains unaffected, a reduced cement line perimeter around each osteon further reduces the tough, energy-

absorbing interfaces available for slowing crack growth and accumulation (Burr et al., 1988; Lakes and Saha, 1979; Schaffler et al., 1987; Skedros et al., 2005). These losses in energy-absorbing capacity may lead to a reduction in material quality. Without increased activation of BMUs, average tissue age increases. Thus, without this cell-facilitated renewal process, old and damaged tissue may persist and the mechanical quality of bone eventually degrades.

Bone matrix is a composite of the collagen and non-collagen proteins, minerals, lipids and water. Of these individual components, only water content, which contributes heavily to viscoelasticity of the tissue and the fluid flow that is thought to allow osteocytes to monitor the mechanical health of the bone tissue environment (for review see Fritton and Weinbaum, 2009), has been directly examined in an animal model exposed to a BP. Collagen is primarily responsible for bone's flexibility under both compressive and tensile loading and provides a measure of toughness to resist fracture. As newly deposited organic matrix matures, calcium and phosphate ions infiltrate the collagen framework and develop calcium hydroxyapatite (HAP), plate-like crystals to provide bone with compressive strength and rigidity. Toughness is built in with the discontinuities just discussed, plus those between the matrix components, including AGEs (section 3.2.2). Many of the matrix components can be broken and rebuilt (Zimmermann et al., 2011). Water serves a structural role as demonstrated by examining the differences in mechanical properties between stiff, brittle, dry bone and tough, wet bone (Sasaki and Enyo, 1995). In pre-mineralized osteoid matrix water is bound by a network of acidic proteoglycans with long glycosaminoglycan chains. Water becomes depleted as ossification proceeds.

Utilizing ultra-short echo-time MRI, supported by NMR, μ CT, and ashing, Wehrli and colleagues recently found such a decreased water (^1H content) and increased phosphorus (^{31}P content as indicator of mineralization) concentration after 6-week alendronate treatment, with doses equivalent to our dosing groups, 1 week after the OVX of rat. The effects were dose-dependent with effect sizes at the greatest dose of -14% (^1H) and $+6\%$ (^{31}P) compared to non-treated OVX (Anumula et al., 2010). Again, species and cortical bone-type differences make extrapolation to the human condition difficult, and no reports of this drying effect of a BP have yet appeared in the literature for any other species.

3.2.2 Effects of aging on collagen and mineral—There is also evidence that BP therapy increases AGE presence in bone (Allen et al., 2008a; Saito et al., 2008; Tang et al., 2009). What is not known is whether the effect is primarily due to increased tissue age resulting from suppressed bone turnover or some other factor. Evidence is lacking for an effect on OB collagen fiber production, orientation or initial cross-linking (enzymatic), factors that normally affect mechanical properties (Martin and Boardman, 1993). Fiber orientation is doubly important because HAP crystal alignment appears dependent on the collagen fibril axis and determined during the initial mineral seeding, i.e., orientation does not change during collagen and crystal maturation (Chatterji et al., 1981; Skedros et al., 2006). Proper enzymatic cross-linking provides the framework for new HAP crystal incorporation and growth. While mineral maturation occurs through crystal growth, collagen maturation is the result of enzymatic (short-term) and non-enzymatic cross-links (AGE, Figure 5) (Byers, 1990).

Tissue aging is a likely candidate for increased AGE in BP-treated bone. While enzymatic cross-linking is a tightly controlled process, non-enzymatic cross-linking is a spontaneous event between mature collagen fibers and free sugars, like glucose, known as glycation and resulting in AGE accumulation in tissue. AGE may be enhanced by oxidation, and both oxidative and AGE byproducts typically increase with tissue age (Saito and Marumo, 2010). The presence of these cross-links may be exacerbated by diabetes, likely due to reduced glucose control and glycemia (Dominguez et al., 2005).

Clearly, AGE accumulation in animal models is associated with altered bone strength (increased demineralized tensile stiffness without effect on mineralized compressive stiffness), reduced bone mechanical quality (cortical tissue-level toughness), and increased fracture risk (Gourion-Arsiquaud, et al., 2010; Karim and Vashishth, 2012; Tang et al., 2007; Vashishth, 2009; Vashishth et al., 2001). Again, the limited human data are in support of the research primarily completed in dogs. Across a wide range of alendronate and risedronate doses, Allen and colleagues demonstrated elevated AGE content in trabecular bone (Allen et al., 2008a; Tang et al., 2009). Also reported have been accumulation of AGE following treatment with high-dose incadronate, a non-clinical BP (Saito et al., 2008). Cortical sites remain to be fully evaluated.

Collagen and HAP maturity (crystallinity) demonstrate variability with aging (Akkus et al., 2003; Boskey and Pleshko Camacho, 2007; Pleshko et al., 1991) and certain drug treatments, including BPs (Gourion-Arsiquaud et al., 2010). These are characterized by Fourier transform infra-red (FTIR) and x-ray diffraction microscopy (Figure 6). Tissue composition varies with skeletal site, and an area associated with atypical fracture, the subtrochanteric cortex of the femur, exhibits a 30% narrower crystallinity distribution than other commonly examined locations (Donnelly et al., 2012b). Interestingly, the AFF subset of fractures demonstrated an 8% greater cortical mineral content compared to typical fracture sites. Similarly, mineral content, collagen maturity and crystallinity have been shown to increase with age of the tissue (Akkus et al., 2003; Boskey and Pleshko Camacho, 2007; Pleshko et al., 1991).

4. Atypical fracture risk assessment

As pointed out by the ASBMR task force, there is a need for better imaging techniques to identify atypical fracture risk as early as possible. Over the past decade, advancements in radiologic imaging technologies have led to high-resolution systems promising non-invasive imaging and the ability for "in silico" analysis based on computational mechanics techniques (Seeman and Delmas, 2006). Resolution currently limits use to evaluating bone at a structural level higher than the width (<1 μm) of micro-cracks (Sornay-Rendu et al., 2009). Conventional radiographic x-ray imaging allows characterization of larger cracks; a skilled reading provides for identifying atypical fractures (Shane et al., 2014). However, by definition, this is too late, as fracture avoidance is the objective. Once an AFF is diagnosed, a surgical intervention is often required.

Imaging for biological activity seems more promising than structural imaging techniques for identifying potential underlying problems (Figure 7). Tagging BPs with contrast agents such

as fluorescent probes or radiolabels might be a move toward accomplishing this by providing an estimate for the amount of BP taken up in bone (Coxon et al., 2008; Kozloff et al., 2010; Roelofs et al., 2010; Turek et al., 2012). These agents may also be useful for identifying AFF by bone scintigraphy (Figure 7) that identifies newly exposed mineral surfaces (Einhorn et al., 1986). Other techniques, including MRI, may be useful for determining mineral and water tissue content (section 3.2.1) (Ahovuo et al., 2004; Anumula et al., 2010; Gaeta et al., 2005). Dual-energy x-ray absorptiometry (DEXA) in combination with additional advancements in image analysis techniques is helping community physicians identify abnormalities like cortical beaking or thickening associated with atypical femoral fractures (McKenna et al., 2013). This extension of the DEXA scan, previously used only to identify patients for osteoporosis treatment, has demonstrated an increased automated identification and detection of AFF features. While possibly a more concrete method to identify AFF over conventional x-ray, this method has not yet been proven to alter the course of treatment or outcome. If indeed this thickening, considered a minor feature, is a localized periosteal reaction of the lateral cortex indicative of a symptom (periosteal irritation due to excessive motion at the cortex) rather than a cause for AFF, this finding may not occur early enough to substantially alter the course of treatment (Shane et al., 2014). Indeed, increased cortical thickness is a feature that should lower, not increase, the risk of fracture. Though again, tissue-level mechanical quality must also be considered if normal remodeling is being impeded by a drug or any other cause (section 2.2).

5. Summary and conclusions

While anti-resorptive therapy has proven very effective over the past 20 years at preventing osteoporotic fractures, the risk of side-effects, including atypical fracture, limits their use (Pazianas and Abrahamsen, 2011). The incidence of atypical fracture is quite small, yet rises with length of use (Figure 1) (Dell et al., 2012). Therefore, questions remain regarding the best use of anti-resorptives. While not specifically covered in this survey, many have suggested a drug holiday, use of lower BP doses or switching to an anabolic drug. These seem like logical quick solutions. However, the optimization of holidays off of a drug (time-dose), and actual doses while not on holiday are likely specific to an individual and their age. Anabolics, specifically PTH, tend to increase the frequency of remodeling cycles and therefore may reverse some of the changes related to tissue age; again these may need to be individualized.

Novel assessment tools for specifying drug doses will require a better understanding of the mechanism(s) behind AFF and a way to balance risk with treatment reward. These tools should be based on biomechanical measures of tissue-level quality that assess changes over the duration of treatment to dynamic loads and directly relate to each type of fracture risk, including atypical. Biological assessments related to tissue-level mechanical properties will also be important.

One of the main biological questions remaining is whether osteocyte and/or osteocyte lacunar density are affected by long-term BP use in humans as has been suggested by our data from the alendronate-treated beagle (Bajaj et al., 2014). We have hypothesized that the sparing of osteocytes in the short-term may have long-term implications. As cellular

networks get older due to delayed death of some osteocytes, signaling for replacement is impaired. This loss of signaling would thus result in more lacunae empty of the cellular machinery required for tissue maintenance than would have been the case if normal, on-time apoptosis had occurred. This tissue aging may also increase AGE content, mineralization, collagen and HAP crystal homogeneity, risk of damage in the form of increased micro-crack length and fracture. Additionally, there may be a decrease in cortical tissue water content and toughness.

While the new data for BP-treated cortical bone tissue surveyed here is not definitive for tissue-aging over long-term human use, this mechanism is in line with the differences found thus far in long-term treated animal models. Bone tissue turnover is known to be important to the overall bone health of long-lived animals, supported by a large body of literature, some of which was reviewed here. Certainly, tissue age and other possible causative factors behind AFF should be further investigated so that even more optimal treatments for prevention of fractures may be developed in the future.

Acknowledgments

The authors are grateful for the input of Drs. David B. Burr and Matthew R. Allen, including critical reviews of an earlier version of this manuscript. The input of anonymous reviewers is also appreciated. Publication was supported by the National Institute of Arthritis and Musculoskeletal and Skin Diseases of the NIH (award number AR063351, JCF), the National Space Biomedical Research Institute through NASA contract NCC 9-58 (Fellowship, DB) and the NSF GK-12 Graduate Teaching Fellowship Program, New Jersey Space Grant Consortium and Sigma Xi (Fellowships, JRG). The content is solely the responsibility of the authors and does not necessarily represent the official views of any funding agency whom had no involvement in study design, collection, analysis, interpretation of data; writing of the manuscript; or decision to submit the manuscript for publication.

Abbreviations

AFF	atypical femoral fractures
AGE	advanced glycation end-products
ASBMR	American Society for Bone and Mineral Research
BMU	basic multi-cellular unit
BP	bisphosphonate
Cx43	connexin 43
DEXA	dual energy x-ray absorptiometry
E	elastic modulus
FDA	Food and Drug Administration
FTIR	Fourier transform infra-red
HAP	hydroxyapatite
MRI	magnetic resonance imaging
NMR	nuclear magnetic resonance
OB	osteoblast

OC	osteoclast
ONJ	osteonecrosis of the jaw
OVX	ovariectomy
PET	positron emission tomography
PTH	parathyroid hormone
RANKL	receptor activator of nuclear factor κ B ligand
SAXS	small-angle x-ray scattering
WAXS	wide-angle x-ray scattering
μCT	micro-computed tomography

References

- Abrahamsen B, Eiken P, Eastell R. Subtrochanteric and diaphyseal femur fractures in patients treated with alendronate: a register-based national cohort study. *Journal of Bone and Mineral Research*. 2009; 24:1095–1102. [PubMed: 19113931]
- Aguirre JI, Plotkin LI, Stewart SA, Weinstein RS, Parfitt AM, Manolagas SC, Bellido T. Osteocyte apoptosis is induced by weightlessness in mice and precedes osteoclast recruitment and bone loss. *Journal of Bone and Mineral Research*. 2006; 21:605–615. [PubMed: 16598381]
- Ahovuo JA, Kiuru MJ, Visuri T. Fatigue stress fractures of the sacrum: diagnosis with MR imaging. *European Radiology*. 2004; 14:500–505. [PubMed: 14576960]
- Akkus O, Polyakova-Akkus A, Adar F, Schaffler MB. Aging of microstructural compartments in human compact bone. *Journal of Bone and Mineral Research*. 2003; 18:1012–1019. [PubMed: 12817753]
- Allen MR, Burr DB. Three years of alendronate treatment results in similar levels of vertebral microdamage as after one year of treatment. *Journal of Bone and Mineral Research*. 2007; 22:1759–1765. [PubMed: 17663638]
- Allen MR, Burr DB. The pathogenesis of bisphosphonate-related osteonecrosis of the jaw: so many hypotheses, so few data. *Journal of Oral and Maxillofacial Surgery*. 2009; 67:61–70. [PubMed: 19371816]
- Allen MR, Erickson AM, Wang X, Burr DB, Martin RB, Hazelwood SJ. Morphological assessment of basic multicellular unit resorption parameters in dogs shows additional mechanisms of bisphosphonate effects on bone. *Calcified Tissue International*. 2010; 86:67–71. [PubMed: 19953232]
- Allen MR, Gineyts E, Leeming DJ, Burr DB, Delmas PD. Bisphosphonates alter trabecular bone collagen cross-linking and isomerization in beagle dog vertebra. *Osteoporosis International*. 2008a; 19:329–337. [PubMed: 18094911]
- Allen MR, Iwata K, Phipps R, Burr DB. Alterations in canine vertebral bone turnover, microdamage accumulation, and biomechanical properties following 1-year treatment with clinical treatment doses of risedronate or alendronate. *Bone*. 2006; 39:872–879. [PubMed: 16765660]
- Allen MR, Reinwald S, Burr DB. Alendronate reduces bone toughness of ribs without significantly increasing microdamage accumulation in dogs following 3 years of daily treatment. *Calcified Tissue International*. 2008b; 82:354–360. [PubMed: 18463913]
- Almeida M, Han L, Martin-Millan M, Plotkin LI, Stewart SA, Roberson PK, Kousteni S, O'Brien CA, Bellido T, Parfitt AM, Weinstein RS, Jilka RL, Manolagas SC. Skeletal involution by age-associated oxidative stress and its acceleration by loss of sex steroids. *The Journal of Biological Chemistry*. 2007; 282:27285–27297. [PubMed: 17623659]

- Ang BF, Koh JS, Ng AC, Howe TS. Bilateral ulna fractures associated with bisphosphonate therapy. *Osteoporosis International*. 2013; 24:1523–1525. [PubMed: 22903294]
- Anumula S, Wehrli SL, Magland J, Wright AC, Wehrli FW. Ultra-short echo-time MRI detects changes in bone mineralization and water content in OVX rat bone in response to alendronate treatment. *Bone*. 2010; 46:1391–1399. [PubMed: 20096815]
- Ascenzi A, Ascenzi MG, Benvenuti A, Mango F. Pinching in longitudinal and alternate osteons during cyclic loading. *Journal of Biomechanics*. 1997; 30:689–695. [PubMed: 9239548]
- Atkinson PJ. Changes in resorption spaces in femoral cortical bone with age. *Journal of Pathology and Bacteriology*. 1965; 89:173–178. [PubMed: 14263459]
- Bajaj D, Geissler JR, Allen MR, Burr DB, Fritton JC. The resistance of cortical bone tissue to failure under cyclic loading is reduced with alendronate. *Bone*. 2014; 64:57–64. [PubMed: 24704262]
- Beck TJ, Oreskovic TL, Stone KL, Ruff CB, Ensrud K, Nevitt MC, Genant HK, Cummings SR. Structural adaptation to changing skeletal load in the progression toward hip fragility: the study of osteoporotic fractures. *Journal of Bone and Mineral Research*. 2001; 16:1108–1119. [PubMed: 11393788]
- Bellido T, Plotkin LI. Novel actions of bisphosphonates in bone: preservation of osteoblast and osteocyte viability. *Bone*. 2011; 49:50–55. [PubMed: 20727997]
- Beno T, Yoon Y-J, Cowin SC, Fritton SP. Estimation of bone permeability using accurate microstructural measurements. *Journal of Biomechanics*. 2006; 39:2378–2387. [PubMed: 16176815]
- Bentolila V, Boyce TM, Fyhrie DP, Drumb R, Skerry TM, Schaffler MB. Intracortical remodeling in adult rat long bones after fatigue loading. *Bone*. 1998; 23:275–281. [PubMed: 9737350]
- Bjorgul K, Reigstad A. Atypical fracture of the ulna associated with alendronate use. *Acta Orthopaedica*. 2011; 82:761–763. [PubMed: 22066557]
- Black DM, Cummings SR, Karpf DB, Cauley JA, Thompson DE, Nevitt MC, Bauer DC, Genant HK, Haskell WL, Marcus R, Ott SM, Torner JC, Quandt SA, Reiss TF, Ensrud KE. Randomised trial of effect of alendronate on risk of fracture in women with existing vertebral fractures. *Lancet*. 1996; 348:1535–1541. [PubMed: 8950879]
- Boivin GY, Chavassieux PM, Santora AC, Yates J, Meunier PJ. Alendronate increases bone strength by increasing the mean degree of mineralization of bone tissue in osteoporotic women. *Bone*. 2000; 27:687–694. [PubMed: 11062357]
- Bonewald LF. The amazing osteocyte. *Journal of Bone and Mineral Research*. 2011; 26:229–238. [PubMed: 21254230]
- Boskey A, Pleshko Camacho N. FT-IR imaging of native and tissue-engineered bone and cartilage. *Biomaterials*. 2007; 28:2465–2478. [PubMed: 17175021]
- Burr DB. Targeted and nontargeted remodeling. *Bone*. 2002; 30:2–4. [PubMed: 11792556]
- Burr DB, Martin RB, Schaffler MB, Radin EL. Bone remodeling in response to in vivo fatigue microdamage. *Journal of Biomechanics*. 1985; 18:189–200. [PubMed: 3997903]
- Burr DB, Schaffler MB, Frederickson RG. Composition of the cement line and its possible mechanical role as a local interface in human compact bone. *Journal of Biomechanics*. 1988; 21:939–945. [PubMed: 3253280]
- Burr DB, Turner CH, Naick P, Forwood MR, Ambrosius W, Hasan MS, Pidaparti R. Does microdamage accumulation affect the mechanical properties of bone? *Journal of Biomechanics*. 1998; 31:337–345. [PubMed: 9672087]
- Byers PH. Brittle bones--fragile molecules: disorders of collagen gene structure and expression. *Trends in Genetics*. 1990; 6:293–300. [PubMed: 2238087]
- Cardoso L, Fritton SP, Gailani G, Benalla M, Cowin SC. Advances in assessment of bone porosity, permeability and interstitial fluid flow. *Journal of Biomechanics*. 2013; 46:253–265. [PubMed: 23174418]
- Cardoso L, Herman BC, Verborgt O, Laudier D, Majeska RJ, Schaffler MB. Osteocyte apoptosis controls activation of intracortical resorption in response to bone fatigue. *Journal of Bone and Mineral Research*. 2009; 24:597–605. [PubMed: 19049324]
- Carter DR, Hayes WC. Fatigue life of compact bone--I. Effects of stress amplitude, temperature and density. *Journal of Biomechanics*. 1976; 9:27–34. [PubMed: 1249078]

- Carter DR, Hayes WC, Schurman DJ. Fatigue life of compact bone-II. Effects of microstructure and density. *Journal of Biomechanics*. 1976; 9:211–218. [PubMed: 1262355]
- Chang ST, Tenforde AS, Grimsrud CD, O’Ryan FS, Gonzalez JR, Baer DM, Chandra M, Lo JC. Atypical femur fractures among breast cancer and multiple myeloma patients receiving intravenous bisphosphonate therapy. *Bone*. 2012; 51:524–527. [PubMed: 22634175]
- Chatterji S, Wall JC, Jeffery JW. Age-related changes in the orientation and particle size of the mineral phase in human femoral cortical bone. *Calcified Tissue International*. 1981; 33:567–574. [PubMed: 6799168]
- Clezardin P, Benzaid I, Croucher PI. Bisphosphonates in preclinical bone oncology. *Bone*. 2011; 49:66–70. [PubMed: 21145441]
- Compston J. Pathophysiology of atypical femoral fractures and osteonecrosis of the jaw. *Osteoporosis International*. 2011; 22:2951–2961. [PubMed: 21997225]
- Cooper RR, Milgram JW, Robinson RA. Morphology of the osteon. An electron microscopic study. *The Journal of Bone and Joint Surgery. American Volume*. 1966; 48:1239–1271.
- Cowin SC, Moss-Salantijn L, Moss ML. Candidates for the mechanosensory system in bone. *Journal of Biomechanical Engineering*. 1991; 113:191–197. [PubMed: 1875693]
- Coxon FP, Thompson K, Roelofs AJ, Ebetino FH, Rogers MJ. Visualizing mineral binding and uptake of bisphosphonate by osteoclasts and non-resorbing cells. *Bone*. 2008; 42:848–860. [PubMed: 18325866]
- Currey JD. The design of mineralised hard tissues for their mechanical functions. *The Journal of Experimental Biology*. 1999; 202:3285–3294. [PubMed: 10562511]
- Currey JD. Materials science. Hierarchies in biomineral structures. *Science*. 2005; 309:253–254. [PubMed: 16002605]
- Dallas SL, Prideaux M, Bonewald LF. The osteocyte: an endocrine cell ... and more. *Endocrine Reviews*. 2013; 34:658–690. [PubMed: 23612223]
- Dell RM, Adams AL, Greene DF, Funahashi TT, Silverman SL, Eisemon EO, Zhou H, Burchette RJ, Ott SM. Incidence of atypical nontraumatic diaphyseal fractures of the femur. *Journal of Bone and Mineral Research*. 2012; 27:2544–2550. [PubMed: 22836783]
- Dempster DW. Bone microarchitecture and strength. *Osteoporosis International*. 2003; 14(Suppl 5): 54–56.
- Dominguez LJ, Barbagallo M, Moro L. Collagen overglycosylation: a biochemical feature that may contribute to bone quality. *Biochemical and Biophysical Research Communications*. 2005; 330:1–4. [PubMed: 15781223]
- Donnelly E, Meredith DS, Nguyen JT, Gladnick BP, Rebolledo BJ, Shaffer AD, Lorich DG, Lane JM, Boskey AL. Reduced cortical bone compositional heterogeneity with bisphosphonate treatment in postmenopausal women with intertrochanteric and subtrochanteric fractures. *Journal of Bone and Mineral Research*. 2012a; 27:672–678. [PubMed: 22072397]
- Donnelly E, Meredith DS, Nguyen JT, Boskey AL. Bone tissue composition varies across anatomic sites in the proximal femur and the iliac crest. *Journal of Orthopaedic Research*. 2012b; 30:700–706. [PubMed: 22034199]
- Doty SB. Morphological evidence of gap junctions between bone cells. *Calcified Tissue International*. 1981; 33:509–512. [PubMed: 6797704]
- Easley SK, Chang MT, Shindich D, Hernandez CJ, Keaveny TM. Biomechanical effects of simulated resorption cavities in cancellous bone across a wide range of bone volume fractions. *Journal of Bone and Mineral Research*. 2012; 27:1927–1935. [PubMed: 22576976]
- Einhorn TA, Vigorita VJ, Aaron A. Localization of technetium-99m methylene diphosphonate in bone using microautoradiography. *Journal of Orthopaedic Research*. 1986; 4:180–187. [PubMed: 3712127]
- FDA. Background Document for Meeting of Advisory Committee for Reproductive Health Drugs and Drug Safety and Risk Management Advisory Committee September 9, 2011. 2011. <http://www.fda.gov/downloads/AdvisoryCommittees/CommitteesMeetingMaterials/Drugs/DrugSafetyandRiskManagementAdvisoryCommittee/UCM270958.pdf>
- Follet H, Li J, Phipps RJ, Hui S, Condon K, Burr DB. Risedronate and alendronate suppress osteocyte apoptosis following cyclic fatigue loading. *Bone*. 2007; 40:1172–1177. [PubMed: 17240209]

- Fritton SP, Weinbaum S. Fluid and solute transport in bone: Flow-induced mechanotransduction. *Annual Review of Fluid Mechanics*. 2009; 41:347–374.
- Frost HM. In vivo osteocyte death. *The Journal of Bone and Joint Surgery. American Volume*. 1960a; 42:138–143.
- Frost HM. Introduction to joint biomechanics. *Henry Ford Hospital Medical Bulletin*. 1960b; 8:415–432. [PubMed: 13702278]
- Frost HM. Treatment of osteoporoses by manipulation of coherent bone cell populations. *Clinical Orthopaedics and Related Research*. 1979; 143:227–244. [PubMed: 389517]
- Gaeta M, Minutoli F, Scribano E, Ascenti G, Vinci S, Bruschetta D, Magaudo L, Blandino A. CT and MR imaging findings in athletes with early tibial stress injuries: comparison with bone scintigraphy findings and emphasis on cortical abnormalities. *Radiology*. 2005; 235:553–561. [PubMed: 15858094]
- Gartrell BA, Coleman RE, Fizazi K, Miller K, Saad F, Sternberg CN, Galsky MD. Toxicities following treatment with bisphosphonates and receptor activator of nuclear factor-kappaB ligand inhibitors in patients with advanced prostate cancer. *European Urology*. 2013; 65:278–286. [PubMed: 23706567]
- Gedmintas L, Solomon DH, Kim SC. Bisphosphonates and risk of subtrochanteric, femoral shaft, and atypical femur fracture: a systematic review and meta-analysis. *Journal of Bone and Mineral Research*. 2013; 28:1729–1737. [PubMed: 23408697]
- Genetos DC, Zhou Z, Li Z, Donahue HJ. Age-related changes in gap junctional intercellular communication in osteoblastic cells. *Journal of Orthopaedic Research*. 2012; 30:1979–1984. [PubMed: 22696456]
- Giladi M, Milgrom C, Simkin A, Stein M, Kashtan H, Margulies J, Rand N, Chisin R, Steinberg R, Aharonson Z, et al. Stress fractures and tibial bone width. A risk factor. *The Journal of Bone and Joint Surgery. British Volume*. 1987; 69:326–329.
- Gourion-Arsiquaud S, AM, Burr DB, Vashishth D, Tang SY, Boskey AL. Bisphosphonate treatment modifies canine bone mineral and matrix properties and their heterogeneity. *Bone*. 2010; 46:666–672. [PubMed: 19925895]
- Grasko JM, Herrmann RP, Vasikaran SD. Recurrent low-energy femoral shaft fractures and osteonecrosis of the jaw in a case of multiple myeloma treated with bisphosphonates. *Journal of Oral and Maxillofacial Surgery*. 2009; 67:645–649. [PubMed: 19231794]
- Harris AL. Connexin channel permeability to cytoplasmic molecules. *Progress in Biophysics and Molecular Biology*. 2007; 94:120–143. [PubMed: 17470375]
- Hayashi K, Aono M, Shintani K, Kazuki K. Bisphosphonate-related atypical femoral fracture with bone metastasis of breast cancer: case report and review. *Anticancer Research*. 2014; 34:1245–1249. [PubMed: 24596367]
- Herman BC, Cardoso L, Majeska RJ, Jepsen KJ, Schaffler MB. Activation of bone remodeling after fatigue: differential response to linear microcracks and diffuse damage. *Bone*. 2010; 47:766–772. [PubMed: 20633708]
- Hoshaw SJ, Cody DD, Saad AM, Fyhrie DP. Decrease in canine proximal femoral ultimate strength and stiffness due to fatigue damage. *Journal of Biomechanics*. 1997; 30:323–329. [PubMed: 9074999]
- Iwata K, Mashiba T, Hitora T, Yamagami Y, Yamamoto T. A large amount of microdamages in the cortical bone around fracture site in a patient of atypical femoral fracture after long-term bisphosphonate therapy. *Bone*. 2014; 64:183–186. [PubMed: 24747352]
- Jo YR, Kim HW, Moon SH, Ko YJ. A case report of long-term bisphosphonate therapy and atypical stress fracture of bilateral femur. *Annals of Rehabilitation Medicine*. 2013; 37:430–432. [PubMed: 23869343]
- Karim L, Vashishth D. Heterogeneous glycation of cancellous bone and its association with bone quality and fragility. *PloS One*. 2012; 7:e35047, 1–7. [PubMed: 22514706]
- Ke Q, Li L, Cai B, Liu C, Yang Y, Gao Y, Huang W, Yuan X, Wang T, Zhang Q, Harris AL, Tao L, Xiang AP. Connexin 43 is involved in the generation of human-induced pluripotent stem cells. *Human Molecular Genetics*. 2013; 22:2221–2233. [PubMed: 23420013]

- Kerschnitzki M, Kollmannsberger P, Burghammer M, Duda GN, Weinkamer R, Wagermaier W, Fratzl P. Architecture of the osteocyte network correlates with bone material quality. *Journal of Bone and Mineral Research*. 2013; 28:1837–1845. [PubMed: 23494896]
- Kleerekoper M, Villanueva AR, Stanciu J, Rao DS, Parfitt AM. The role of three-dimensional trabecular microstructure in the pathogenesis of vertebral compression fractures. *Calcified Tissue International*. 1985; 37:594–597. [PubMed: 3937580]
- Komatsubara S, Mori S, Mashiba T, Ito M, Li J, Kaji Y, Akiyama T, Miyamoto K, Cao Y, Kawanishi J, Norimatsu H. Long-term treatment of incadronate disodium accumulates microdamage but improves the trabecular bone microarchitecture in dog vertebra. *Journal of Bone and Mineral Research*. 2003; 18:512–520. [PubMed: 12619936]
- Kozloff KM, Volakis LI, Marini JC, Caird MS. Near-infrared fluorescent probe traces bisphosphonate delivery and retention in vivo. *J Bone Miner Res*. 2010; 25:1748–1758. [PubMed: 20200982]
- Lakes R, Saha S. Cement line motion in bone. *Science*. 1979; 204:501–503. [PubMed: 432653]
- Lappe J, Davies K, Recker R, Heaney R. Quantitative ultrasound: use in screening for susceptibility to stress fractures in female army recruits. *Journal of Bone and Mineral Research*. 2005; 20:571–578. [PubMed: 15765175]
- Lenart BA, Lorich DG, Lane JM. Atypical fractures of the femoral diaphysis in postmenopausal women taking alendronate. *The New England Journal of Medicine*. 2008; 358:1304–1306. [PubMed: 18354114]
- Lenart BA, Neviasser AS, Lyman S, Chang CC, Edobor-Osula F, Steele B, van der Meulen MC, Lorich DG, Lane JM. Association of low-energy femoral fractures with prolonged bisphosphonate use: a case control study. *Osteoporosis International*. 2009; 20:1353–1362. [PubMed: 19066707]
- Loiselle AE, Jiang JX, Donahue HJ. Gap junction and hemichannel functions in osteocytes. *Bone*. 2013; 54:205–212. [PubMed: 23069374]
- Manolagas SC, Parfitt AM. For whom the bell tolls: distress signals from long-lived osteocytes and the pathogenesis of metabolic bone diseases. *Bone*. 2013; 54:272–278. [PubMed: 23010104]
- Martin RB, Boardman DL. The effects of collagen fiber orientation, porosity, density, and mineralization on bovine cortical bone bending properties. *J Biomech*. 1993; 26:1047–1054. [PubMed: 8408087]
- Martin, RB.; Burr, DB.; Sharkey, NA. Mechanical adaptability of the skeleton, *Skeletal Tissue Mechanics*. New York: Springer-Verlag; 1998. p. 225-274.
- Mashiba T, Hirano T, Turner CH, Forwood MR, Johnston CC, Burr DB. Suppressed bone turnover by bisphosphonates increases microdamage accumulation and reduces some biomechanical properties in dog rib. *Journal of Bone and Mineral Research*. 2000; 15:613–620. [PubMed: 10780852]
- Mashiba T, Turner CH, Hirano T, Forwood MR, Johnston CC, Burr DB. Effects of suppressed bone turnover by bisphosphonates on microdamage accumulation and biomechanical properties in clinically relevant skeletal sites in beagles. *Bone*. 2001; 28:524–531. [PubMed: 11344052]
- McKenna MJ, Heffernan E, Hurson C, McKiernan FE. Clinician approach to diagnosis of stress fractures including bisphosphonate-associated fractures. *QJM*. 2014; 107:99–105. [PubMed: 24106312]
- McKenna MJ, van der Kamp S, Heffernan E, Hurson C. Incomplete Atypical Femoral Fractures: Assessing the Diagnostic Utility of DXA by Extending Femur Length. *Journal of Clinical Densitometry*. 2013; 16:579–583. [PubMed: 23896493]
- McNamara LM, Van der Linden JC, Weinans H, Prendergast PJ. Stress-concentrating effect of resorption lacunae in trabecular bone. *Journal of Biomechanics*. 2006; 39:734–741. [PubMed: 16439243]
- Mori S, Harruff R, Ambrosius W, Burr DB. Trabecular bone volume and microdamage accumulation in the femoral heads of women with and without femoral neck fractures. *Bone*. 1997; 21:521–526. [PubMed: 9430242]
- Mullender MG, van der Meer DD, Huiskes R, Lips P. Osteocyte density changes in aging and osteoporosis. *Bone*. 1996; 18:109–113. [PubMed: 8833204]
- Müller, ME. Müller AO Classification of Fractures—Long Bones. *AOTrauma*. 1980. https://aotrauma.aofoundation.org/Structure/education/self-directed-learning/reference-materials/classifications/Documents/mueller_ao_class.pdf

- Nakashima T, Hayashi M, Fukunaga T, Kurata K, Oh-Hora M, Feng JQ, Bonewald LF, Kodama T, Wutz A, Wagner EF, Penninger JM, Takayanagi H. Evidence for osteocyte regulation of bone homeostasis through RANKL expression. *Nature Medicine*. 2011; 17:1231–1234.
- National Guideline Clearinghouse. Atypical subtrochanteric and diaphyseal femoral fractures: report of a task force of the American Society for Bone and Mineral Research. Rockville MD: Agency for Healthcare Research and Quality; 2013. <http://www.guideline.gov/content.aspx?id=38359>
- Neviaser AS, Lane JM, Lenart BA, Edobor-Osula F, Lorch DG. Low-energy femoral shaft fractures associated with alendronate use. *Journal of Orthopaedic Trauma*. 2008; 22:346–350. [PubMed: 18448990]
- Nojiri H, Saita Y, Morikawa D, Kobayashi K, Tsuda C, Miyazaki T, Saito M, Marumo K, Yonezawa I, Kaneko K, Shirasawa T, Shimizu T. Cytoplasmic superoxide causes bone fragility owing to low-turnover osteoporosis and impaired collagen cross-linking. *Journal of Bone and Mineral Research*. 2011; 26:2682–2694. [PubMed: 22025246]
- Parfitt AM. The coupling of bone formation to bone resorption: a critical analysis of the concept and of its relevance to the pathogenesis of osteoporosis. *Metabolic Bone Disease & Related Research*. 1982; 4:1–6. [PubMed: 7121250]
- Parfitt AM. Targeted and nontargeted bone remodeling: relationship to basic multicellular unit origination and progression. *Bone*. 2002; 30:5–7. [PubMed: 11792557]
- Pattin CA, Caler WE, Carter DR. Cyclic mechanical property degradation during fatigue loading of cortical bone. *Journal of Biomechanics*. 1996; 29:69–79. [PubMed: 8839019]
- Pazianas M, Abrahamsen B. Safety of bisphosphonates. *Bone*. 2011; 49:103–110. [PubMed: 21236370]
- Pettyl M, Hert J, Fiala P. Spatial organization of the haversian bone in man. *Journal of Biomechanics*. 1996; 29:161–169. [PubMed: 8849809]
- Piekarski K, Munro M. Transport mechanism operating between blood supply and osteocytes in long bones. *Nature*. 1977; 269:80–82. [PubMed: 895891]
- Pleshko N, Boskey A, Mendelsohn R. Novel infrared spectroscopic method for the determination of crystallinity of hydroxyapatite minerals. *Biophysical Journal*. 1991; 60:786–793. [PubMed: 1660314]
- Plotkin LI, Aguirre JI, Kousteni S, Manolagas SC, Bellido T. Bisphosphonates and estrogens inhibit osteocyte apoptosis via distinct molecular mechanisms downstream of extracellular signal-regulated kinase activation. *The Journal of Biological Chemistry*. 2005; 280:7317–7325. [PubMed: 15590626]
- Plotkin LI, Lezcano V, Thostenson J, Weinstein RS, Manolagas SC, Bellido T. Connexin 43 is required for the anti-apoptotic effect of bisphosphonates on osteocytes and osteoblasts in vivo. *Journal of Bone and Mineral Research*. 2008; 23:1712–1721. [PubMed: 18597631]
- Plotkin LI, Manolagas SC, Bellido T. Transduction of cell survival signals by connexin-43 hemichannels. *The Journal of Biological Chemistry*. 2002; 277:8648–8657. [PubMed: 11741942]
- Plotkin LI, Weinstein RS, Parfitt AM, Roberson PK, Manolagas SC, Bellido T. Prevention of osteocyte and osteoblast apoptosis by bisphosphonates and calcitonin. *Journal of Clinical Investigation*. 1999; 104:1363–1374. [PubMed: 10562298]
- Puhaindran ME, Farooki A, Steensma MR, Hameed M, Healey JH, Boland PJ. Atypical subtrochanteric femoral fractures in patients with skeletal malignant involvement treated with intravenous bisphosphonates. *The Journal of Bone and Joint Surgery. American Volume*. 2011; 93:1235–1242.
- Qiu S, Rao DS, Fyhrie DP, Palnitkar S, Parfitt AM. The morphological association between microcracks and osteocyte lacunae in human cortical bone. *Bone*. 2005; 37:10–15. [PubMed: 15878702]
- Qiu S, Rao DS, Palnitkar S, Parfitt AM. Age and distance from the surface but not menopause reduce osteocyte density in human cancellous bone. *Bone*. 2002; 31:313–318. [PubMed: 12151084]
- Qiu S, Rao DS, Palnitkar S, Parfitt AM. Reduced iliac cancellous osteocyte density in patients with osteoporotic vertebral fracture. *Journal of Bone and Mineral Research*. 2003; 18:1657–1663. [PubMed: 12968675]

- Recker, RR. Bone Histomorphometry: Techniques and Interpretation. Recker, RR., editor. Boca Raton, FL: CRC Press; 1983.
- Richer E, Lewis MA, Odvina CV, Vazquez MA, Smith BJ, Peterson RD, Poindexter JR, Antich PP, Pak CY. Reduction in normalized bone elasticity following long-term bisphosphonate treatment as measured by ultrasound critical angle reflectometry. *Osteoporosis International*. 2005; 16:1384–1392. [PubMed: 15726294]
- Rodan GA, Fleisch HA. Bisphosphonates: mechanisms of action. *Journal of Clinical Investigation*. 1996; 97:2692–2696. [PubMed: 8675678]
- Roelofs AJ, Coxon FP, Ebetino FH, Lundy MW, Henneman ZJ, Nancollas GH, Sun S, Blazewska KM, Bala JL, Kashemirov BA, Khalid AB, McKenna CE, Rogers MJ. Fluorescent risedronate analogues reveal bisphosphonate uptake by bone marrow monocytes and localization around osteocytes in vivo. *Journal of Bone and Mineral Research*. 2010; 25:606–616. [PubMed: 20422624]
- Rogers MJ, Crockett JC, Coxon FP, Monkkonen J. Biochemical and molecular mechanisms of action of bisphosphonates. *Bone*. 2011; 49:34–41. [PubMed: 2111853]
- Ruff CB, Hayes WC. Subperiosteal expansion and cortical remodeling of the human femur and tibia with aging. *Science*. 1982; 217:945–948. [PubMed: 7112107]
- Ruppel ME, Miller LM, Burr DB. The effect of the microscopic and nanoscale structure on bone fragility. *Osteoporosis International*. 2008; 19:1251–1265. [PubMed: 18317862]
- Russell RG. Bisphosphonates: the first 40 years. *Bone*. 2011; 49:2–19. [PubMed: 21555003]
- Saad F, Brown JE, Van Poznak C, Ibrahim T, Stemmer SM, Stopeck AT, Diel IJ, Takahashi S, Shore N, Henry DH, Barrios CH, Facon T, Senecal F, Fizazi K, Zhou L, Daniels A, Carriere P, Dansey R. Incidence, risk factors, and outcomes of osteonecrosis of the jaw: integrated analysis from three blinded active-controlled phase III trials in cancer patients with bone metastases. *Annals of Oncology*. 2012; 23:1341–1347. [PubMed: 21986094]
- Saito M, Marumo K. Collagen cross-links as a determinant of bone quality: a possible explanation for bone fragility in aging, osteoporosis, and diabetes mellitus. *Osteoporosis International*. 2010; 21:195–214. [PubMed: 19760059]
- Saito M, Mori S, Mashiba T, Komatsubara S, Marumo K. Collagen maturity, glycation induced-pentosidine, and mineralization are increased following 3-year treatment with incadronate in dogs. *Osteoporosis International*. 2008; 19:1343–1354. [PubMed: 18373056]
- Sanders KM, Pasco JA, Ugoni AM, Nicholson GC, Seeman E, Martin TJ, Skoric B, Panahi S, Kotowicz MA. The exclusion of high trauma fractures may underestimate the prevalence of bone fragility fractures in the community: the Geelong Osteoporosis Study. *Journal of Bone and Mineral Research*. 1998; 13:1337–1342. [PubMed: 9718203]
- Sasaki N, Enyo A. Viscoelastic properties of bone as a function of water content. *Journal of Biomechanics*. 1995; 28:809–815. [PubMed: 7657679]
- Sasaki S, Miyakoshi N, Hongo M, Kasukawa Y, Shimada Y. Low-energy diaphyseal femoral fractures associated with bisphosphonate use and severe curved femur: a case series. *Journal of Bone and Mineral Metabolism*. 2012; 30:561–567. [PubMed: 22610061]
- Schaffler MB. Role of bone turnover in microdamage. *Osteoporosis International*. 2003; 14(Suppl 5): 73–80.
- Schaffler MB, Burr DB. Stiffness of compact bone: effects of porosity and density. *Journal of Biomechanics*. 1988; 21:13–16. [PubMed: 3339022]
- Schaffler MB, Burr DB, Frederickson RG. Morphology of the osteonal cement line in human bone. *The Anatomical Record*. 1987; 217:223–228. [PubMed: 3578839]
- Schaffler MB, Cheung WY, Majeska R, Kennedy O. Osteocytes: Master Orchestrators of Bone. *Calcified Tissue International*. 2014; 94:5–24. [PubMed: 24042263]
- Schaffler MB, Choi K, Milgrom C. Aging and matrix microdamage accumulation in human compact bone. *Bone*. 1995; 17:521–525. [PubMed: 8835305]
- Schaffler MB, Kennedy OD. Osteocyte signaling in bone. *Current Osteoporosis Reports*. 2012; 10:118–125. [PubMed: 22552701]
- Schaffler MB, Radin EL, Burr DB. Mechanical and morphological effects of strain rate on fatigue of compact bone. *Bone*. 1989; 10:207–214. [PubMed: 2803855]

- Schaffler MB, Radin EL, Burr DB. Long-term fatigue behavior of compact bone at low strain magnitude and rate. *Bone*. 1990; 11:321–326. [PubMed: 2252810]
- Schilcher J, Aspenberg P. Incidence of stress fractures of the femoral shaft in women treated with bisphosphonate. *Acta Orthopaedica*. 2009; 80:413–415. [PubMed: 19568963]
- Seeman E, Delmas PD. Bone quality--the material and structural basis of bone strength and fragility. *The New England Journal of Medicine*. 2006; 354:2250–2261. [PubMed: 16723616]
- Shane E, Burr D, Abrahamsen B, Adler RA, Brown TD, Cheung AM, Cosman F, Curtis JR, Dell R, Dempster DW, Ebeling PR, Einhorn TA, Genant HK, Geusens P, Klaushofer K, Lane JM, McKiernan F, McKinney R, Ng A, Nieves J, O'Keefe R, Papapoulos S, Howe TS, van der Meulen MC, Weinstein RS, Whyte MP. Atypical subtrochanteric and diaphyseal femoral fractures: Second report of a task force of the American Society for Bone and Mineral Research. *Journal of Bone and Mineral Research*. 2014; 29:1–23. [PubMed: 23712442]
- Shane E, Burr D, Ebeling PR, Abrahamsen B, Adler RA, Brown TD, Cheung AM, Cosman F, Curtis JR, Dell R, Dempster D, Einhorn TA, Genant HK, Geusens P, Klaushofer K, Koval K, Lane JM, McKiernan F, McKinney R, Ng A, Nieves J, O'Keefe R, Papapoulos S, Sen HT, van der Meulen MC, Weinstein RS, Whyte M. Atypical subtrochanteric and diaphyseal femoral fractures: report of a task force of the American Society for Bone and Mineral Research. *Journal of Bone and Mineral Research*. 2010; 25:2267–2294. [PubMed: 20842676]
- Silva MJ, Uthgenannt BA, Rutlin JR, Wohl GR, Lewis JS, Welch MJ. In vivo skeletal imaging of ¹⁸F-fluoride with positron emission tomography reveals damage- and time-dependent responses to fatigue loading in the rat ulna. *Bone*. 2006; 39:229–236. [PubMed: 16533624]
- Skedros JG, Clark GC, Sorenson SM, Taylor KW, Qiu S. Analysis of the effect of osteon diameter on the potential relationship of osteocyte lacuna density and osteon wall thickness. *The Anatomical Record*. 2011; 294:1472–1485. [PubMed: 21809466]
- Skedros JG, Holmes JL, Vajda EG, Bloebaum RD. Cement lines of secondary osteons in human bone are not mineral-deficient: new data in a historical perspective. *The Anatomical Record. Part A, Discoveries in Molecular, Cellular, and Evolutionary Biology*. 2005; 286:781–803.
- Skedros JG, Sorenson SM, Takano Y, Turner CH. Dissociation of mineral and collagen orientations may differentially adapt compact bone for regional loading environments: results from acoustic velocity measurements in deer calcanei. *Bone*. 2006; 39:143–151. [PubMed: 16459155]
- Smith RW, Walker RR. Femoral expansion in aging women: Implications for osteoporosis and fractures. *Science*. 1964; 145:156–157. [PubMed: 14171549]
- Sornay-Rendu E, Boutroy S, Munoz F, Bouxsein ML. Cortical and trabecular architecture are altered in postmenopausal women with fractures. *Osteoporosis International*. 2009; 20:1291–1297. [PubMed: 19590838]
- Subramanian G, Fritton JC, Quek SY. Osteonecrosis and atypical fractures--common origins? *Osteoporosis International*. 2013; 24:745–746. [PubMed: 22407260]
- Tang SY, Allen MR, Phipps R, Burr DB, Vashishth D. Changes in nonenzymatic glycation and its association with altered mechanical properties following 1-year treatment with risedronate or alendronate. *Osteoporosis International*. 2009; 20:887–894. [PubMed: 18850239]
- Tang SY, Zeenath U, Vashishth D. Effects of non-enzymatic glycation on cancellous bone fragility. *Bone*. 2007; 40:1144–1151. [PubMed: 17257914]
- Tang ZH, Kumar VP. Alendronate-associated ulnar and tibial fractures: a case report. *Journal of Orthopaedic Surgery (Hong Kong)*. 2011; 19:370–372. [PubMed: 22184174]
- Thompson DD. Age changes in bone mineralization, cortical thickness, and haversian canal area. *Calcified Tissue International*. 1980; 31:5–11. [PubMed: 6770973]
- Tjhia CK, Stover SM, Rao DS, Odvina CV, Fyhrie DP. Relating micromechanical properties and mineral densities in severely suppressed bone turnover patients, osteoporotic patients, and normal subjects. *Bone*. 2012; 51:114–122. [PubMed: 22561877]
- Tomkinson A, Gevers EF, Wit JM, Reeve J, Noble BS. The role of estrogen in the control of rat osteocyte apoptosis. *Journal of Bone and Mineral Research*. 1998; 13:1243–1250. [PubMed: 9718192]

- Tomkinson A, Reeve J, Shaw RW, Noble BS. The death of osteocytes via apoptosis accompanies estrogen withdrawal in human bone. *The Journal of Clinical Endocrinology and Metabolism*. 1997; 82:3128–3135. [PubMed: 9284757]
- Tommasini SM, Trinward A, Acerbo AS, De Carlo F, Miller LM, Judex S. Changes in intracortical microporosities induced by pharmaceutical treatment of osteoporosis as detected by high resolution micro-CT. *Bone*. 2012; 50:596–604. [PubMed: 22226688]
- Turek J, Ebetino FH, Lundy MW, Sun S, Kashemirov BA, McKenna CE, Gallant MA, Plotkin LI, Bellido T, Duan X, Triffitt JT, Russell RG, Burr DB, Allen MR. Bisphosphonate binding affinity affects drug distribution in both intracortical and trabecular bone of rabbits. *Calcified Tissue International*. 2012; 90:202–210. [PubMed: 22249525]
- Uthgenannt BA, Silva MJ. Use of the rat forelimb compression model to create discrete levels of bone damage in vivo. *J Biomech*. 2007; 40:317–324. [PubMed: 16519891]
- Vashishth D. Advanced glycation end-products and bone fractures. *BoneKey*. 2009; 6:268–278.
- Vashishth D, Gibson G, Kimura J, Schaffler MB, Fyhrie DP. Determination of bone volume by osteocyte population. *The Anatomical Record*. 2002; 267:292–295. [PubMed: 12124907]
- Vashishth D, Gibson GJ, Khoury JI, Schaffler MB, Kimura J, Fyhrie DP. Influence of nonenzymatic glycation on biomechanical properties of cortical bone. *Bone*. 2001; 28:195–201. [PubMed: 11182378]
- Vashishth D, Verborgt O, Divine G, Schaffler MB, Fyhrie DP. Decline in osteocyte lacunar density in human cortical bone is associated with accumulation of microcracks with age. *Bone*. 2000; 26:375–380. [PubMed: 10719281]
- Verborgt O, Tatton NA, Majeska RJ, Schaffler MB. Spatial distribution of Bax and Bcl-2 in osteocytes after bone fatigue: complementary roles in bone remodeling regulation? *Journal of Bone and Mineral Research*. 2002; 17:907–914. [PubMed: 12009022]
- Wang L, Cowin SC, Weinbaum S, Fritton SP. Modeling tracer transport in an osteon under cyclic loading. *Annals of Biomedical Engineering*. 2000; 28:1200–1209. [PubMed: 11144981]
- Waterman GN, Yellin O, Jamshidinia K, Swift RA, Tamkin JA, Audell RA, Berenson JR. Metatarsal stress fractures in patients with multiple myeloma treated with long-term bisphosphonates: a report of six cases. *The Journal of Bone and Joint Surgery. American Volume*. 2011; 93:e106.
- Wenzel TE, Schaffler MB, Fyhrie DP. In vivo trabecular microcracks in human vertebral bone. *Bone*. 1996; 19:89–95. [PubMed: 8853850]
- Wernecke G, Namdari S, DiCarlo EF, Schneider R, Lane J. Case report of spontaneous, nonspinal fractures in a multiple myeloma patient on long-term pamidronate and zoledronic acid. *HSS Journal : The Musculoskeletal Journal of Hospital for Special Surgery*. 2008; 4:123–127. [PubMed: 18815855]
- Wong SY, Kariks J, Evans RA, Dunstan CR, Hills E. The effect of age on bone composition and viability in the femoral head. *Journal of Bone Joint Surgery. American Volume*. 1985; 67:274–283.
- Woo SB, Hellstein JW, Kalmar JR. Narrative [corrected] review: bisphosphonates and osteonecrosis of the jaws. *Annals of Internal Medicine*. 2006; 144:753–761. [PubMed: 16702591]
- Zimmermann EA, Schaible E, Bale H, Barth HD, Tang SY, Reichert P, Busse B, Alliston T, Ager JW, Ritchie RO. Age-related changes in the plasticity and toughness of human cortical bone at multiple length scales. *Proceedings of the National Academy of Sciences of the United States of America*. 2011; 108:14416–14421. [PubMed: 21873221]

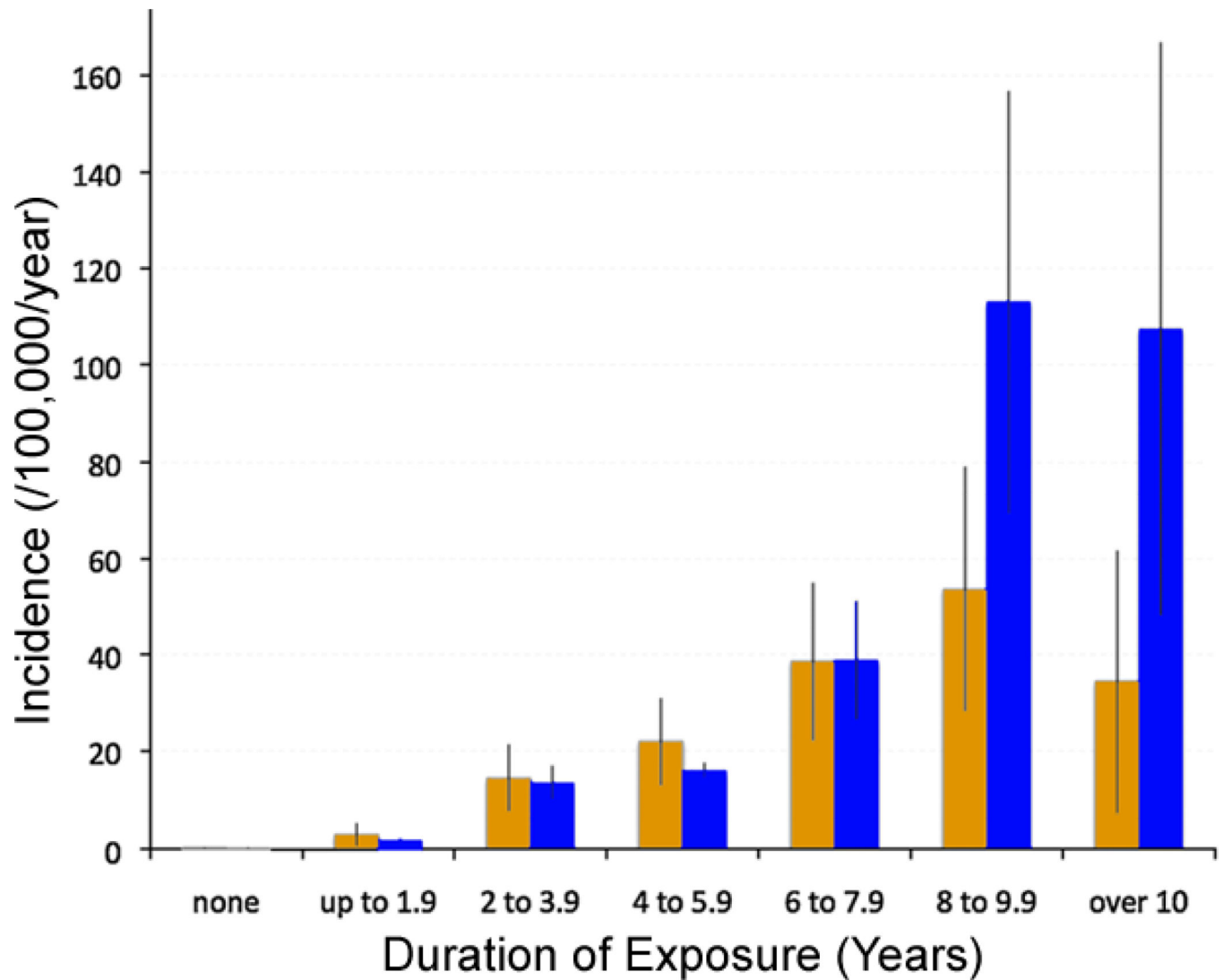


Figure 1.

In the only large, long-term prospective clinical report to date, the incidence of non-traumatic diaphyseal fractures of the femur increased with duration of bisphosphonate (BP) exposure. Reproduced with permission from Dell et al. (2012). Data demonstrate unadjusted (blue) and age-adjusted (yellow) (error bars are 95% confidence intervals) incidence of atypical femur fracture (AFF) in 188,814 patients on BPs for increasing numbers of years (x-axis). The study population was over 45 years old, and approximately half of those sustaining AFF were of Asian ancestry.

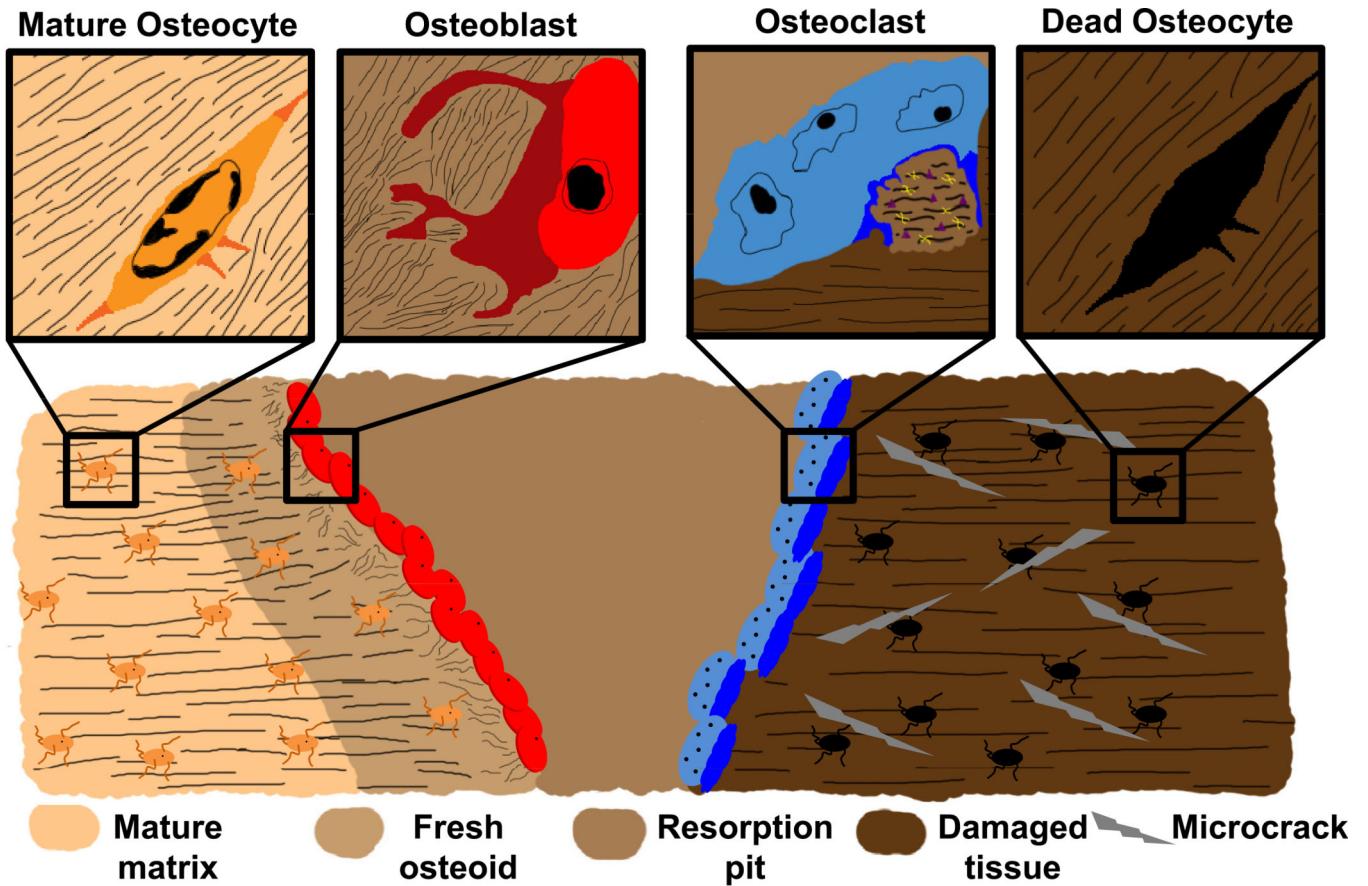


Figure 2. The primary mechanism of bone tissue replacement in the adult occurs in the basic multicellular unit (BMU). The BMUs are in both trabecular and cortical bone (Frost, 1979; Parfitt, 1982). Bone resorption is completed by multi-nucleated osteoclasts (OC) that degrade both inorganic and organic phases, leaving a resorption pit (center). Following closely behind are osteoblasts (OB) that fill the pit by secreting components of the osteoid matrix. Some OBs become entombed within the mineralizing matrix, transition into terminally-differentiated osteocytes and take up residency within the lacunar space of bone.

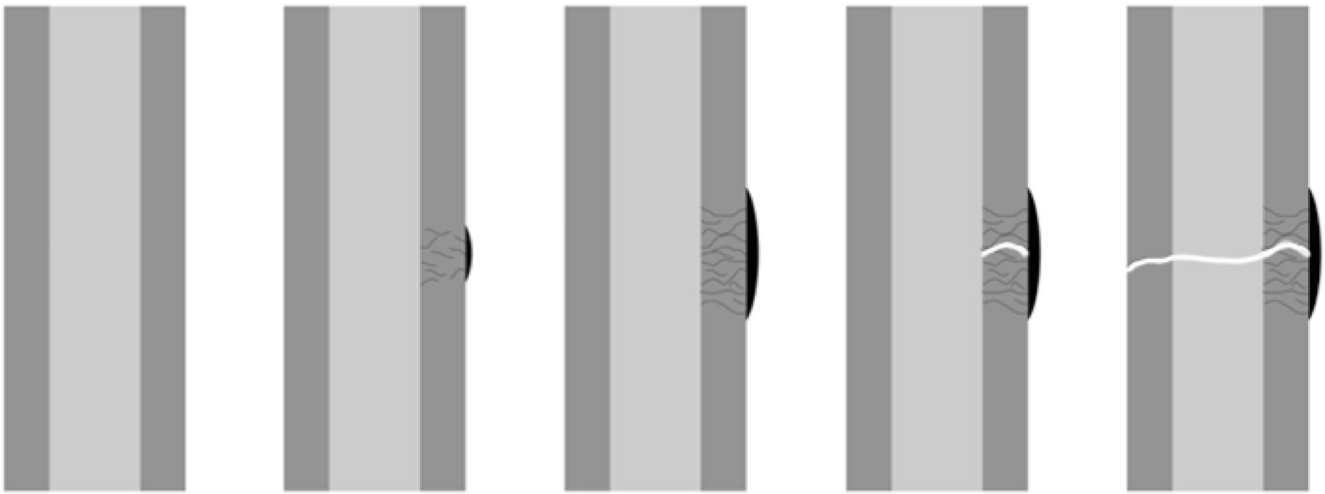


Figure 3. Model for atypical fracture that presents with symptoms similar to that of an insufficiency-type stress fracture. A full, single cortex, transverse fracture on the tensile (lateral) side of the femur leads to irritation or disruption of the outer periosteal soft-tissue layer of bone. The reaction includes a small callus (black) of rapid bone formation attempting to stabilize the periosteum, and the patient presents with what appears to be an insufficiency-type stress fracture.

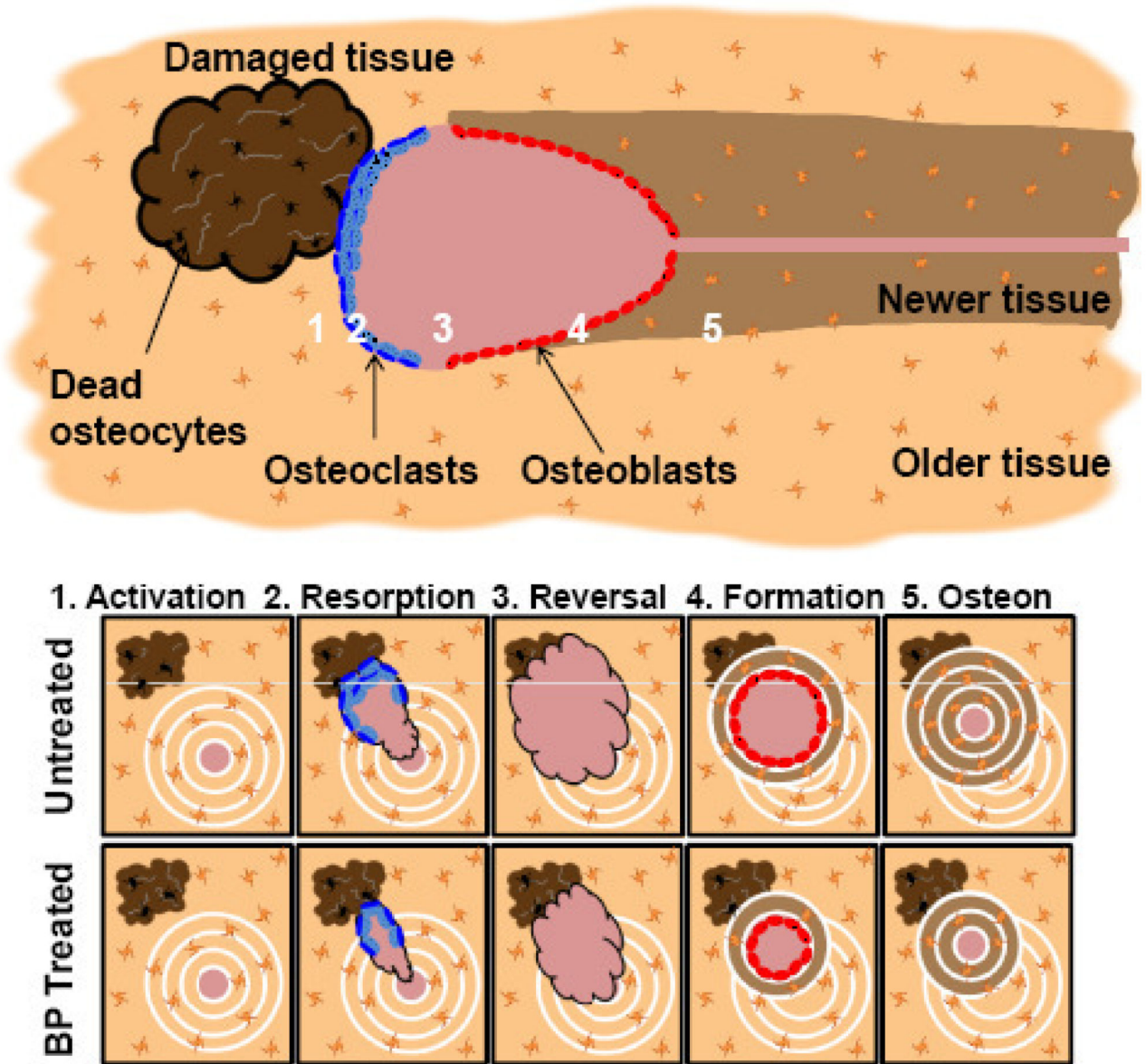


Figure 4.

Osteoclastic tunneling to remodel cortical bone tissue (top), and a model for the observations of decreased osteonal size, osteocyte lacunae density and increased micro-crack length in long-term bisphosphonate (BP) treated cortical bone tissue (bottom). Top: Osteoblasts of the BMU are shown filling in the resorption pit, leaving a central canal for the blood and nerve supply of the Haversian system (Cooper et al., 1966; Petryl et al., 1996; Piekarski and Munro, 1977). Bottom: Damage due to "wear and tear" accumulates in young normals, and is removed at a regulated rate that prevents coalescence (Burr, 2002; Parfitt, 2002). Long-term BP treatment may affect bone quality through many BMU-related cortical tissue features.

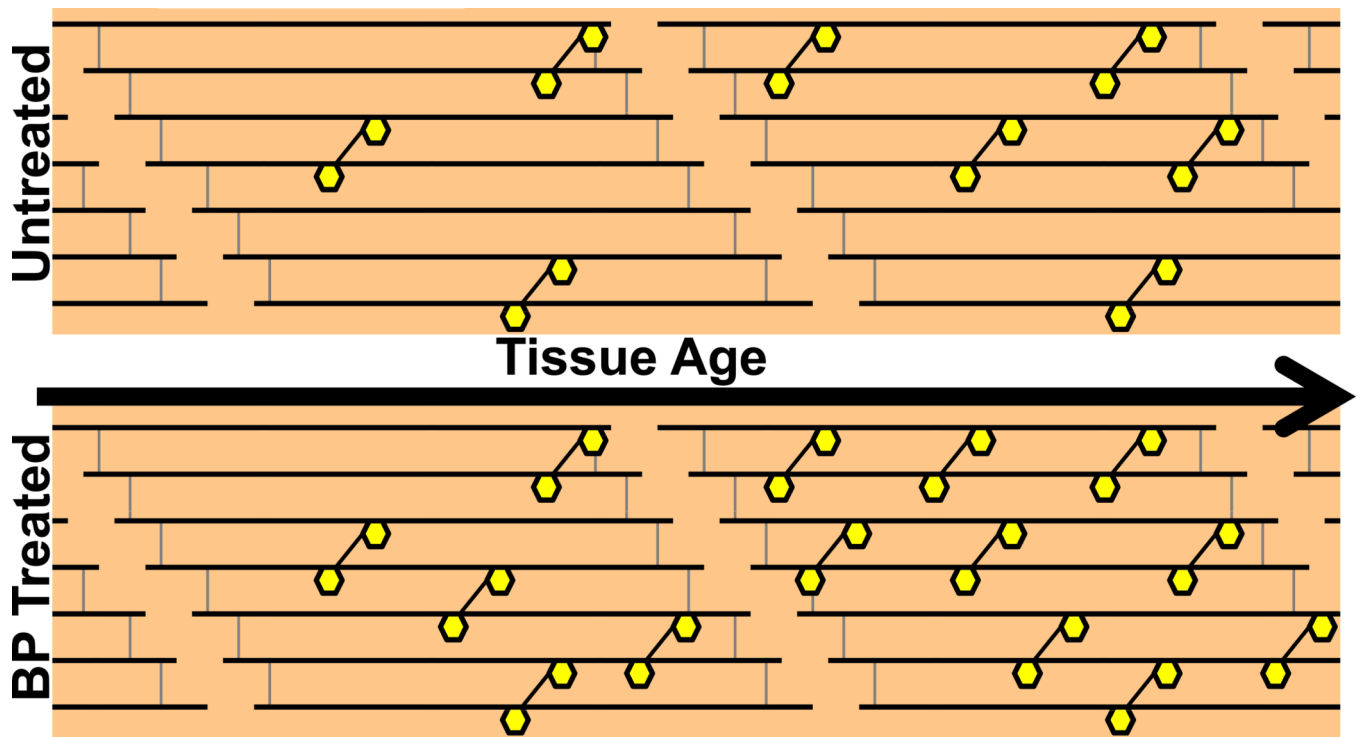


Figure 5. Mechanical integrity of bone tissue is altered by two mechanisms of cross-linking between collagen fibers: enzymatic (gray lines) and non-enzymatic (yellow hexagons). Enzymatic occurs during collagen deposition and subsequent mineralization (Saito and Marumo, 2010). This process is tightly regulated. As tissue age increases with BP treatment, spontaneous non-enzymatic cross-linking may lead to the formation of advanced glycation end products.

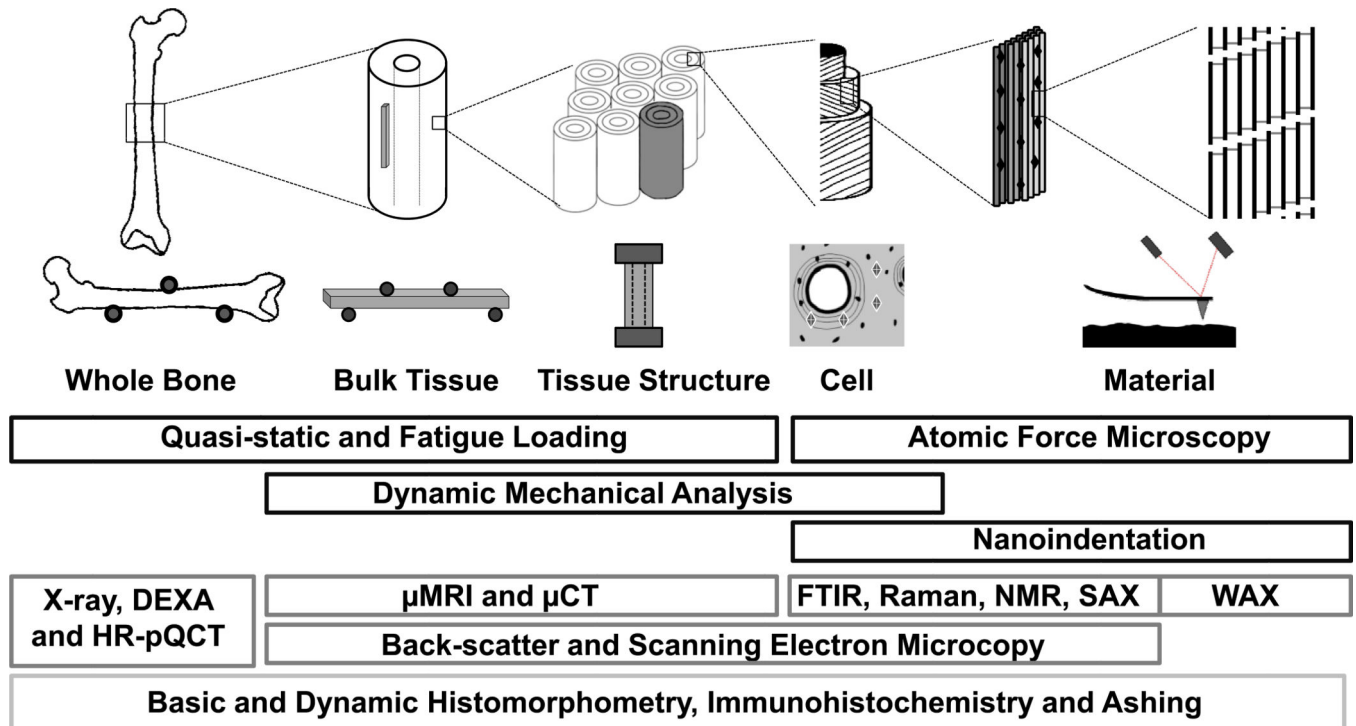


Figure 6.

The hierarchical structure of bone provides many length scales upon which to measure structural and biomechanical properties (after (Currey, 2005; Ruppel et al., 2008)). Each is integral to the overall function of cortical tissue. Quasi-static or fatigue loads are applied to characterize (left-to-right) whole bone, tissue-, cell-, and material-level mechanical properties. Beams or coupons are isolated to evaluate osteonal and interstitial tissue (Bajaj et al., 2014). Osteons may be further isolated for testing (Ascenzi et al., 1997). Microindentation and nanoindentation analyses characterize hardness of the composite material of bone (Anumula et al., 2010). Imaging techniques (reviewed in (Cardoso et al., 2013)), including Fourier transform infra-red (FTIR), Raman, small-angle (SAXS), and wide-angle (WAXS) x-ray diffraction microscopy, are used to characterize sub-micrometer properties.

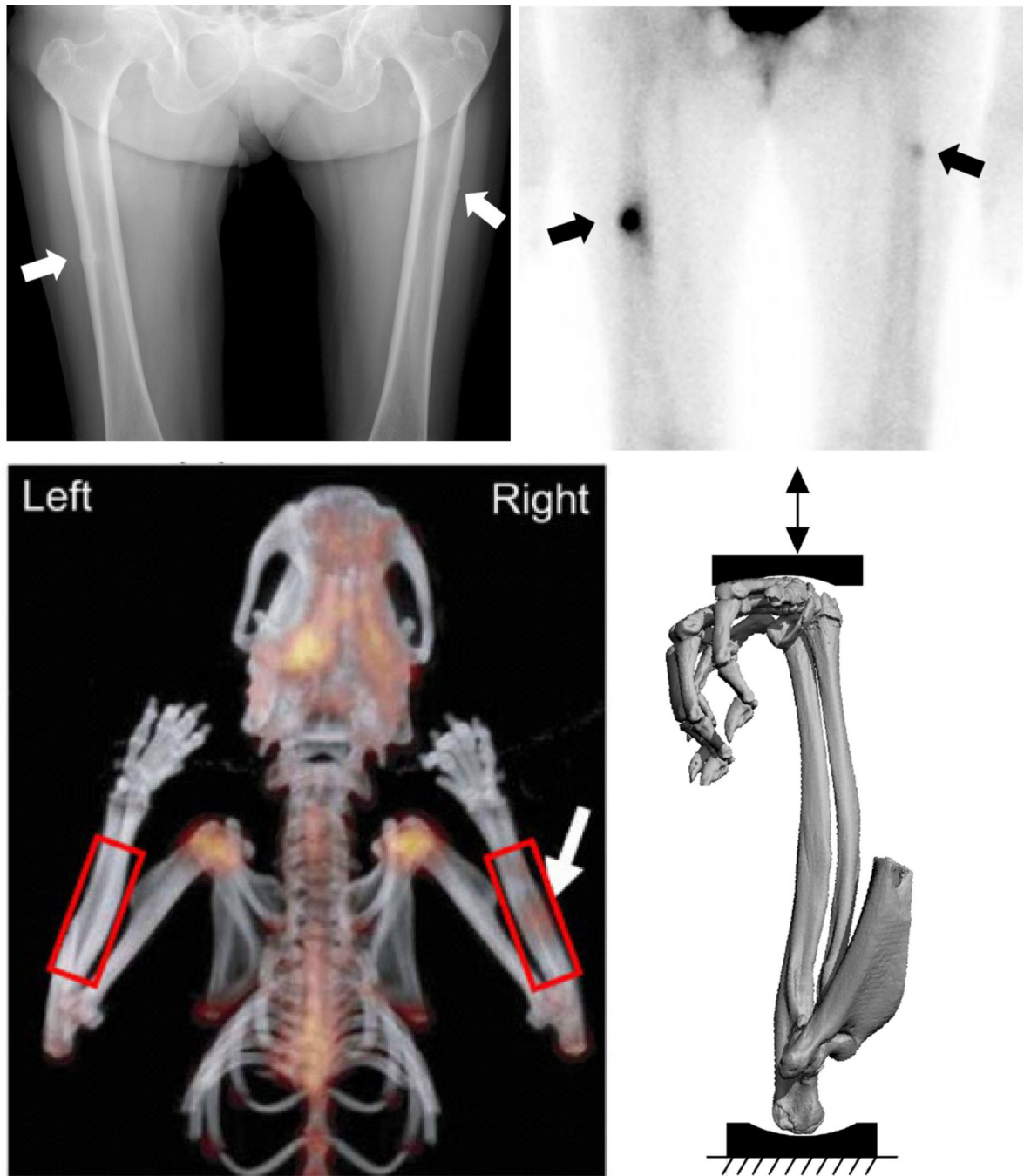


Figure 7.

(top) An x-ray combined with a Technetium-99m scan may allow a physician early identification of an atypical femur fracture (AFF). Reproduced with permission from Jo et al. (2013). The x-ray effectively identifies a radiolucent line indicative of the AFF on left (left most white arrow). However, only the Technetium-99m scan on right delineates an increased and unusual bone formation activity in the contralateral AFF (right most black arrow). (bottom) Co-registered *in vivo* positron emission (PET) and computed-tomography (CT) demonstrates increased uptake of radio-labeled fluoride (^{18}F) due to increased mineral

exposure after external mechanical loading used to create damage and stress fracture in the living rat. Reproduced with permission from Silva et al. (2006); Uthgenannt and Silva (2007).

Author Manuscript

Author Manuscript

Author Manuscript

Author Manuscript