

RESEARCH ARTICLE

# Same Day Discharge versus Overnight Stay in the Hospital following Percutaneous Coronary Intervention in Patients with Stable Coronary Artery Disease: A Systematic Review and Meta-Analysis of Randomized Controlled Trials

Pravesh Kumar Bundhun<sup>1‡</sup>, Mohammad Zafooruddin Sani Soogund<sup>2</sup>, Wei-Qiang Huang<sup>1\*</sup>

**1** Institute of Cardiovascular Diseases, the First Affiliated Hospital of Guangxi Medical University, Nanning, Guangxi, P. R. China, **2** Guangxi Medical University, Nanning, Guangxi, P. R. China

‡ PKB is first author on this work.

\* [huangwq1029@126.com](mailto:huangwq1029@126.com)



**OPEN ACCESS**

**Citation:** Bundhun PK, Soogund MZS, Huang W-Q (2017) Same Day Discharge versus Overnight Stay in the Hospital following Percutaneous Coronary Intervention in Patients with Stable Coronary Artery Disease: A Systematic Review and Meta-Analysis of Randomized Controlled Trials. *PLoS ONE* 12(1): e0169807. doi:10.1371/journal.pone.0169807

**Editor:** Bernardo Cortese, Humanitas Gavazzeni, ITALY

**Received:** September 3, 2016

**Accepted:** December 21, 2016

**Published:** January 9, 2017

**Copyright:** © 2017 Bundhun et al. This is an open access article distributed under the terms of the [Creative Commons Attribution License](https://creativecommons.org/licenses/by/4.0/), which permits unrestricted use, distribution, and reproduction in any medium, provided the original author and source are credited.

**Data Availability Statement:** All data have been cited in references and are freely available in PubMed and other electronic databases.

**Funding:** This research was supported by the Promotional Project of Guangxi Medical and Health Appropriate Technology (No. S201518). The funders had no role in study design, data collection and analysis, decision to publish, or preparation of the manuscript.

## Abstract

### Background

New research in interventional cardiology has shown the demand for percutaneous coronary interventions (PCI) to have increased tremendously. Effective treatment with a lower hospital cost has been the aim of several PCI capable centers. This study aimed to compare the adverse clinical outcomes associated with same day discharge versus overnight stay in the hospital following PCI in a population of randomized patients with stable coronary artery disease (CAD).

### Methods

The National Library of Medicine (MEDLINE/PubMed), the Cochrane Registry of Randomized Controlled Trials and EMBASE databases were searched (from March to June 2016) for randomized trials comparing same-day discharge versus overnight stay in the hospital following PCI. Main endpoints in this analysis included adverse cardiovascular outcomes observed during a 30-day period. Statistical analysis was carried out by the RevMan 5.3 software whereby odds ratios (OR) and 95% confidence intervals (CIs) were calculated with respect to a fixed or a random effects model.

### Results

Eight randomized trials with a total number of 3081 patients (1598 patients who were discharged on the same day and 1483 patients who stayed overnight in the hospital) were included. Results of this analysis showed that mortality, myocardial infarction (MI) and major adverse cardiac events (MACEs) were not significantly different between same day discharge versus overnight stay following PCI with OR: 0.22, 95% CI: 0.04–1.35; P = 0.10,

**Competing Interests:** The authors have declared that no competing interests exist.

**Abbreviations:** CAD, coronary artery diseases; MACEs, major adverse cardiac events; OR, odds ratio; PCI, percutaneous coronary intervention; RCTs, randomized controlled tri.

OR: 0.68, 95% CI: 0.33–1.41;  $P = 0.30$  and OR: 0.45, 95% CI: 0.20–1.02;  $P = 0.06$  respectively. Blood transfusion and re-hospitalization were also not significantly different between these two groups with OR: 0.64, 95% CI: 0.13–3.21;  $P = 0.59$  and OR: 1.53, 95% CI: 0.88–2.65;  $P = 0.13$  respectively. Similarly, any adverse event, major bleeding and repeated revascularization were also not significantly different between these two groups of patients with stable CAD, with OR: 0.42, 95% CI: 0.05–3.97;  $P = 0.45$ , OR: 0.73, 95% CI: 0.15–3.54;  $P = 0.69$  and OR: 0.67, 95% CI: 0.14–3.15;  $P = 0.61$  respectively.

## Conclusion

In terms of adverse cardiovascular outcomes, same day discharge was neither superior nor inferior to overnight hospital stay following PCI in those patients with stable CAD. However, future research will have to emphasize on the long-term consequences.

## Introduction

Coronary artery disease (CAD) is one among the common chronic non-communicable diseases [1–2] affecting a large population of patients all around the world. New research in interventional cardiology has shown the demand for percutaneous coronary interventions (PCI) to have increased tremendously. Effective treatments with lower hospital costs have been the aim of several PCI capable centers. However, to further decrease their hospital expenses, patients are even willing to reduce their length of hospital stay following PCI. At the same time, interventionists and physicians are willing to provide an effective treatment along with a rapid hospital discharge following coronary angioplasty in order to arrange beds and provide space for new patients. Unfortunately, very few research has shown the impact of same day discharge versus overnight hospital stay in patients following PCI [3–6]. Therefore, this study aimed to compare the adverse clinical outcomes associated with same day discharge versus overnight stay in the hospital following PCI in a population of randomized patients with stable CAD.

## Methods

### Data sources and search strategy

The National Library of Medicine (MEDLINE/PubMed), the Cochrane Registry of Randomized Controlled Trials and the EMBASE databases were searched (from March to June 2016) for English language publications based on the comparison between same-day discharge versus overnight hospital stay following PCI by using the following terms:

1. Same day discharge, overnight stay and percutaneous coronary intervention;
2. Same day discharge and percutaneous coronary intervention;
3. Same day discharge, overnight stay, and coronary angioplasty;
4. Same day discharge, overnight stay and PCI;
5. Same day discharge, longer stay and PCI;
6. Outpatient and percutaneous coronary intervention/PCI;
7. Ambulatory and percutaneous coronary intervention/PCI;

#### 8. SDD, OS and PCI;

These terms were also briefly searched in Google scholar and then the publications obtained were cross-checked in case we missed out any relevant article.

Reference lists of publications which were expected to be highly qualified for this analysis, and meta-analyses obtained during this search process were also checked for relevant trials.

This search included articles which were published between the years 1996 and 2016.

### Inclusion and exclusion criteria

Studies were included if:

1. They were Randomized controlled trials (RCTs) comparing same day discharge versus overnight hospital stay following PCI.
2. They consisted of patients with stable CAD.
3. They reported adverse clinical outcomes as their endpoints.

Studies were excluded if:

1. They were non-RCTs (meta-analyses, observational studies, case studies).
2. They did not compare same day discharge versus overnight hospital stay following PCI.
3. They did not involve patients with stable CAD.
4. They did not report any adverse clinical outcome following coronary angioplasty.
5. They were different studies but they were associated with the same trials and data.
6. They were duplicates, repeating themselves in different searched databases.

### Participants, outcomes and follow ups

**Types of participants.** This analysis mainly consisted of patients with stable CAD. Outcomes analyzed included:

1. Death
2. Myocardial infarction (MI)
3. Major adverse cardiac events (MACEs) which consisted of death, MI and repeated revascularization. Since only one study reported Major adverse cerebrovascular and cardiovascular events (MACCEs), both MACCEs and MACEs were included in the same subgroup and analyzed.
4. Repeated revascularization
5. Major bleeding (any type of major bleeding)
6. Any adverse event
7. Re-hospitalization
8. Blood transfusion

The types of participants involved, the outcomes reported and the follow up periods have been summarized in [Table 1](#). Most of the trials reported a follow up period of 30 days.

**Table 1. Type of participants, outcomes and follow-up periods reported.**

Trials	Type of participants	Outcomes reported	Follow up periods
Knopf1999 [7]	Stable CAD	Any complication, MACEs	30 days
Carere2000 [5]	Stable CAD and ACS	Any complication, MACEs	30 days
Bertrand2008 [8]	Stable CAD and ACS	Death, MI, revascularization, major bleeding, transfusion, repeated hospitalization	30 days
Clavijio2016 [9]	Stable CAD and ACS	MACEs, major bleeding, recurrent hospitalization, mortality	30 days
Falcone2011 [10]	Stable CAD	Any adverse event	30 days
Heyde2007 [11]	Stable CAD	MACCE, death, MI, stroke, revascularization	24 hours
Kim2013 [12]	Stable CAD	MI, bleeding, hospitalization	30 days
Slagboom2005 [13]	Stable CAD and unstable angina (only type A and B)	Death, MI, revascularization, adverse events, bleeding, transfusion	30 days

Abbreviations: MI: myocardial infarction, MACEs: major adverse cardiac events, MACCEs: major adverse cardiovascular and cerebrovascular events, CAD: coronary artery disease, ACS: acute coronary syndrome

doi:10.1371/journal.pone.0169807.t001

### Data extraction and review

Two authors (PKB and MZSS) carefully reviewed the trials and retrieved data to be used in this analysis. The total number of patients who were discharged on the same day following PCI and those who stayed at least overnight in the hospital following PCI, the type of study reported (excluding observational cohorts), information regarding the baseline features of the patients, the clinical outcomes reported along with the respective follow up periods and the total number of events that occurred in both groups, were carefully extracted.

The bias risk was assessed in association with the Cochrane Collaboration [14]. Grades ranging from A (lowest risk of bias) to E (highest risk of bias) were allocated to each trial.

The PRISMA (Preferred Reporting Items for Systematic Reviews and Meta-Analyses) guideline was followed [15].

Any disagreement which came across during the data extraction process or the bias risk assessment was discussed and solved by the third author (WQH).

### Statistical analysis

Similar to many other meta-analyses, heterogeneity was expected in this analysis too. Heterogeneity would normally assess the null hypothesis in order to know if all the studies were assessing the same effect. In this analysis, first of all, heterogeneity was assessed using the Cochrane Q-statistic test and then secondly using the  $I^2$  statistic test.

A P value less or equal to 0.05 would denote a statistically significant result whereas a P value greater than 0.05 would imply an un-significant result.

$I^2$  was required to measure inconsistency across subgroup analyses whereby a high percentage of  $I^2$  would denote an increased heterogeneity whereas a low  $I^2$  would signify a low level of heterogeneity.

A fixed effects model ( $I^2 < 50\%$ ) or a random effects model ( $I^2 > 50\%$ ) was used based on the value of  $I^2$  obtained during the data analysis.

RevMan software (version 5.3) was used to carry out the data analysis using odds ratios (OR) and 95% confidence intervals (CI) as the statistical parameters.

Publication bias was assessed through funnel plots.

Ethical approval was not considered necessary for this type of study.

## Results

### Database searched outcomes

A total number of 251 articles were searched from the electronic databases as well as from the reference lists of suitable meta-analyses and other relevant articles. After a careful review of the titles and abstracts, 214 articles were eliminated since they were not related to the scope of this analysis. A further 17 articles were eliminated since they were duplicates. Twenty (20) full-text articles were assessed for eligibility. Another selection was done whereby:

- two articles were eliminated since they were meta-analyses;
- three articles were eliminated since they were associated with the same trial;
- seven more articles were eliminated since they were observational studies.

Finally, only eight trials satisfied all the inclusion and exclusion criteria of this analysis ([Fig 1](#)).

### General features of the trials

A total number of 3081 patients (1598 patients who were discharged on the same day and 1483 patients who stayed overnight in the hospital following coronary angioplasty) were included in this analysis. The most common features of the trials included in this meta-analysis have been listed in [Table 2](#).

### Baseline features of the patients

[Table 3](#) summarizes the baseline features of the patients included in this analysis.

According to [Table 3](#), there was no significant difference in baseline features among patients who were discharged on the same day and patients who stayed overnight in the hospital following PCI.

### Adverse clinical and cardiovascular outcomes associated with patients who were discharged on the same day versus patients who stayed overnight in the hospital following coronary angioplasty

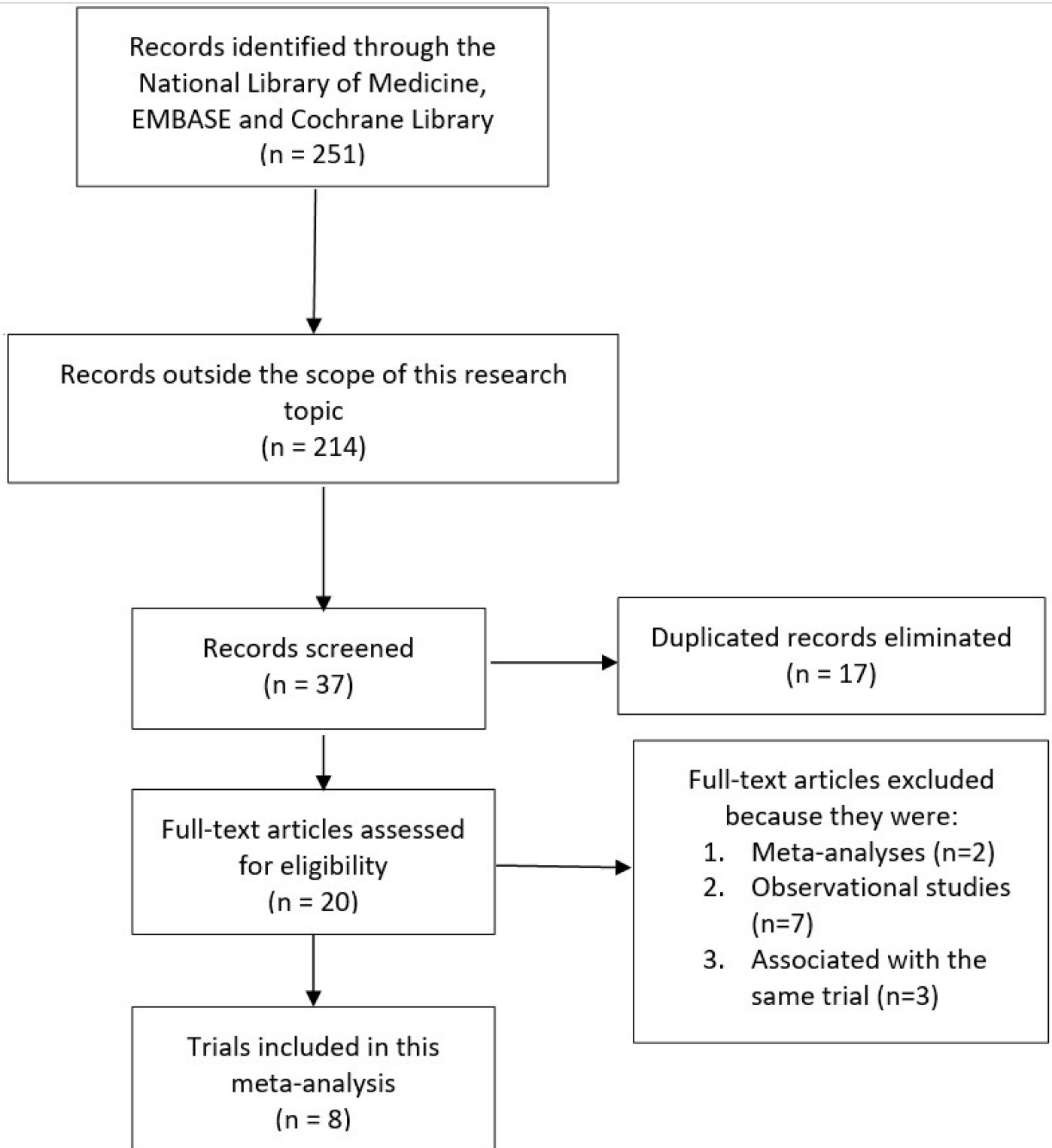
The main results have been summarized in [Table 4](#).

During this 30-day follow up, mortality, MI and MACEs were not significantly different between same day discharge and overnight stay following PCI with OR: 0.22, 95% CI: 0.04–1.35;  $P = 0.10$ , OR: 0.68, 95% CI: 0.33–1.41;  $P = 0.30$  and OR: 0.45, 95% CI: 0.20–1.02;  $P = 0.06$  respectively. Similarly, blood transfusion and re-hospitalization were also not significantly different between these two groups with OR: 0.64, 95% CI: 0.13–3.21;  $P = 0.59$  and OR: 1.53, 95% CI: 0.88–2.65;  $P = 0.13$  respectively ([Fig 2](#)).

Any adverse event, major bleeding and repeated revascularization were also not significantly different between these two groups with OR: 0.42, 95% CI: 0.05–3.97;  $P = 0.45$ , OR: 0.73, 95% CI: 0.15–3.54;  $P = 0.69$  and OR: 0.67, 95% CI: 0.14–3.15;  $P = 0.61$  respectively ([Fig 3](#)).

The subgroups analyzing adverse cardiovascular outcomes showed a low level of heterogeneity whereas a few other subgroups assessing other clinical outcomes showed moderate to high levels of heterogeneity.

[Fig 4](#) represents the funnel plot showing publication bias.



**Fig 1. Flow diagram showing the study selection.**

doi:10.1371/journal.pone.0169807.g001

**Table 2. General features of the trials.**

Trials	Type of study	No of patients discharged on same day (n)	No of patients who stayed overnight (n)	Total number of patients (n)	Bias risk grade
Knopf1999 [7]	RCT	43	47	90	B
Bertrand2008 [8]	RCT	504	501	1005	B
Clavijio2016 [9]	RCT	50	50	100	B
Falcone2011 [10]	RCT	23	21	44	B
Heyde2007 [11]	RCT	403	397	800	B
Kim2013 [12]	RCT	150	148	298	B
Slagboom2005 [13]	RCT	375	269	644	B
Carere2000 [5]	RCT	50	50	100	B
<b>Total no of patients (n)</b>		1598	1483	3081	

Abbreviations: RCT: randomized controlled trials

doi:10.1371/journal.pone.0169807.t002

### Discussion

This systematic review and meta-analysis aimed to compare the adverse clinical outcomes associated with same day discharge versus overnight stay in the hospital following PCI. The current results showed that same day discharge was neither inferior nor superior to overnight hospital stay following coronary angioplasty in these patients with stable CAD, indicating that this rapid invasive procedure might later find a place in the outpatient setting especially for this particular subgroup of patients.

Similar to this analysis, Abdelaal et al [16] who evaluated the outcomes of same day discharge versus overnight hospitalization following PCI showed similar rate of MACEs associated with both discharge strategies and it should be noted that their analysis included a large number of patients (110,000 patients) obtained from observational studies and randomized trials. Brayton et al [17] also showed that in selected patients undergoing PCI, same day discharge was not associated with a higher rate of major adverse events and this strategy appeared to be as safe as the overnight following coronary angioplasty. They also showed that patients who were excluded from same day discharge following PCI had worse short and long term outcomes [18].

Similarly, an initial single centered experience [19] based on same day discharge following angioplasty showed this strategy to be safe and reliable in a selection of patients without

**Table 3. Baseline features of the patients included.**

Trials	Mean age*	Males (%)	Ht (%)	Ds (%)	Cs (%)	DM (%)
	SDD/OS	SDD/OS	SDD/OS	SDD/OS	SDD/OS	SDD/OS
Knopf1999	57.0/59.0	60.5/66.0	51.2/59.6	-	-	16.3/23.4
Bertrand2008	60.0/61.0	78.0/79.0	52.0/55.0	84.0/88.0	33.0/34.0	16.0/16.0
Clavijio2016	58.5/58.0	88.0/84.0	84.0/86.0	68.0/68.0	12.0/20.0	40.0/48.0
Falcone2011	60.6/57.0	65.2/85.7	86.9/95.2	86.9/95.2	30.4/28.6	47.8/42.9
Heyde2007	62.1/61.1	81.0/81.0	41.0/39.0	65.0/64.0	26.5/29.5	16.0/14.0
Kim2013	56.5/55.2	74.5/74.1	-	-	13.3/16.9	46.2/52.4
Slagboom2005	60.0/60.0	77.5/74.5	36.5/40.5	50.5/53.5	50.0/50.0	14.5/11.0
Carere2000	62.0/59.0	88.0/78.0	-	-	-	-

Abbreviations: SDD: same day discharge, OS: overnight stay, Ht: hypertension, Ds: dyslipidemia, Cs: current smoking, DM: diabetes mellitus;

\*mean age was reported in years

doi:10.1371/journal.pone.0169807.t003

**Table 4. Results of this analysis.**

Outcomes analyzed	OR with 95% CI	P value	I <sup>2</sup> (%)
Any adverse event	0.42 [0.05–3.97]	0.45	71
Death	0.22 [0.04–1.35]	0.10	0
Major bleeding	0.73 [0.15–3.54]	0.69	72
MI	0.68 [0.33–1.41]	0.30	25
MACEs	0.45 [0.20–1.02]	0.06	0
Blood transfusion	0.64 [0.13–3.21]	0.59	0
Repeated revascularization	0.67 [0.14–3.15]	0.61	54
Re-hospitalization	1.53 [0.88–2.65]	0.13	0

Abbreviations: MI: myocardial infarction, MACEs: major adverse cardiac events, OR: odds ratio, CI: confidence intervals

doi:10.1371/journal.pone.0169807.t004

resulting in complications thereafter. In addition, another single centered registry [20] demonstrated same day discharge to be safe in patients with low angiographic and clinical risks without showing any post-procedural complications.

In a study dealing with contemporary outpatient PCI [21], the authors also concluded that patients with single vessel or multi vessel PCI could be safely discharged within 10-hours post-procedure. Furthermore, the authors also suggested that outpatient PCI had the ability to reduce hospital cost and increase space for other patients who were waiting for their turn. This might also be the case even for high risk patients [22].

However, this was not always a correct decision. In a multi-centered cohort involving 107, 018 patients undergoing elective PCI between November 2004 and December 2008 [23], the authors concluded that among selected low risk patients, even if not associated with a high rate of mortality or re-hospitalization compared with overnight hospitalization, same day discharge should rarely be implemented in patients following PCI.

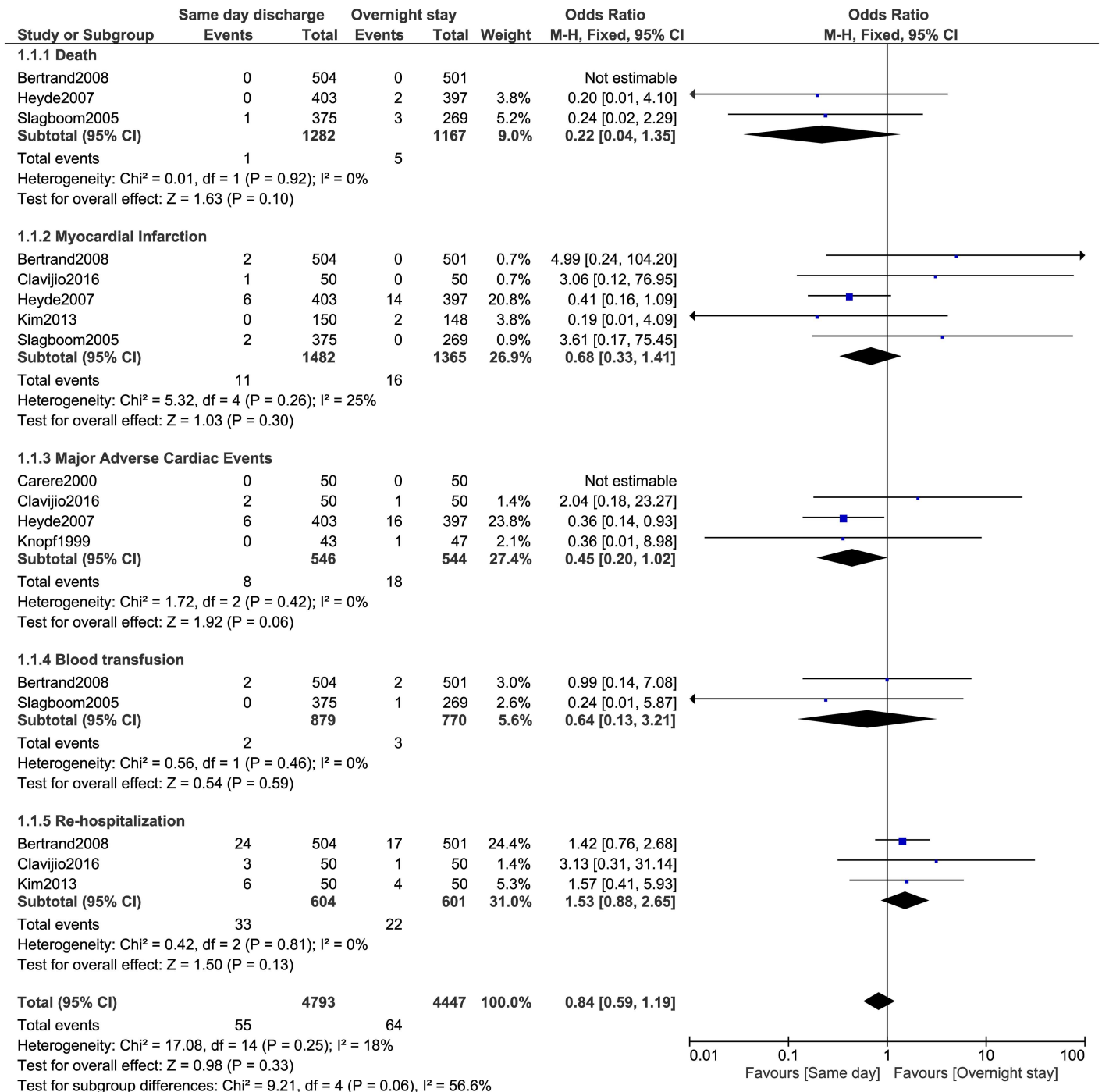
Nevertheless, with new advanced techniques in the catheter laboratories [24–25], even if same day discharge could find a place in PCI capable centers, concerns should be raised about the complications which might occur following this invasive procedure. In addition, close monitoring of the patients and proper explanations owing the long-term complications associated with PCI and their managements should also not be ignored in patients who require same day discharge following PCI. And it should be noted that without an overnight stay in hospital, monitoring and closely observing these patients for any complication would seldom be possible in such a short period of time especially for the subgroups of patients with acute coronary syndrome.

This interesting research idea should further be debated in clinical medicine since it is a question which is often asked by most of the patients who require PCI. This idea should also be made clear among interventionists in order to predict prognosis and to manage new patients in the outpatient settings in this fast-developing world.

### Novelty

This analysis might be considered new because it consisted of a large number of randomized patients. In addition to randomized patients, previously published meta-analyses also involved patients obtained from observational studies which might have introduced several types of bias during subgroup analysis. Moreover, previously published meta-analyses did not include so many outcome subgroups. Associated with a low level of heterogeneity among the subgroups analyzing cardiovascular outcomes (mortality, MACEs) could be another new feature of this research.



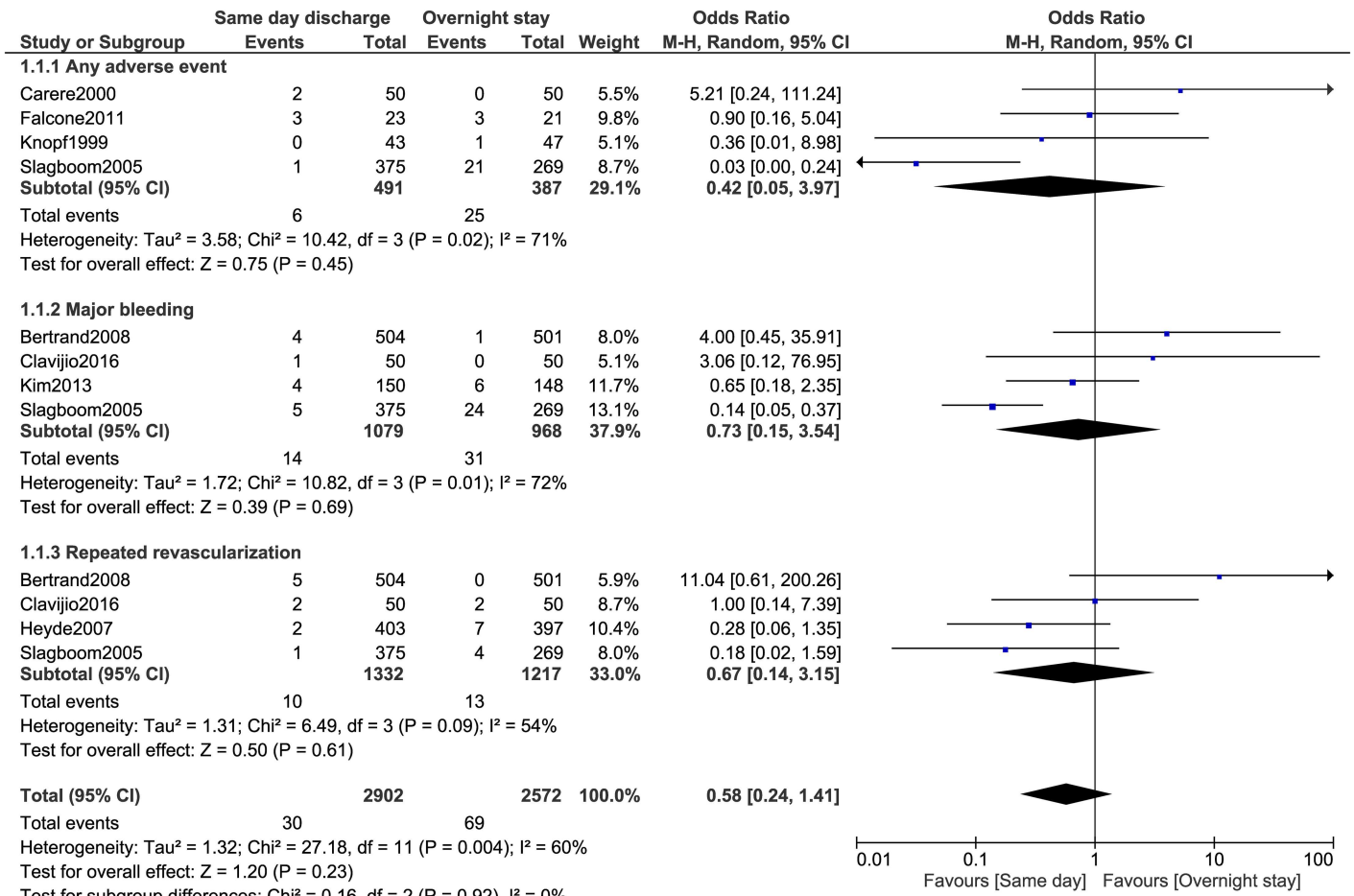


**Fig 2. Adverse clinical outcomes associated with same day discharge versus overnight stay following coronary angioplasty (part 1).**

doi:10.1371/journal.pone.0169807.g002

### Limitations

A limited number of patients were analyzed and therefore, this analysis might not provide robust results. Also, the moderate and high levels of heterogeneity observed among several subgroups analyzing bleeding, any adverse event and repeated revascularization



**Fig 3. Adverse clinical outcomes associated with same day discharge versus overnight stay following coronary angioplasty (part 2).**

doi:10.1371/journal.pone.0169807.g003

could be another limitation in this study. However, due to the fact that they were not the most important clinical outcomes in this analysis, they might not affect this analysis to a high extent. Selection bias, publication bias and language bias could have occurred because only English language publications were used in this analysis. Moreover, even if all the eight trials included in this analysis consisted of patients with stable CAD, three of the trials also included patients with low risk ACS, and one trial also included patients with unstable angina (type A and B). The inclusion of such patients along with stable CAD patients might have contributed to a heterogeneous result in several subgroups assessing other less important clinical outcomes. In addition, similar study design which was not reported in all of the eight trials might also have contributed to the introduction of bias across the studies.

### Conclusion

In terms of adverse cardiovascular outcomes, same day discharge was neither superior nor inferior to overnight hospital stay following PCI in those patients with stable CAD. However, future research will have to emphasize on the long-term consequences.

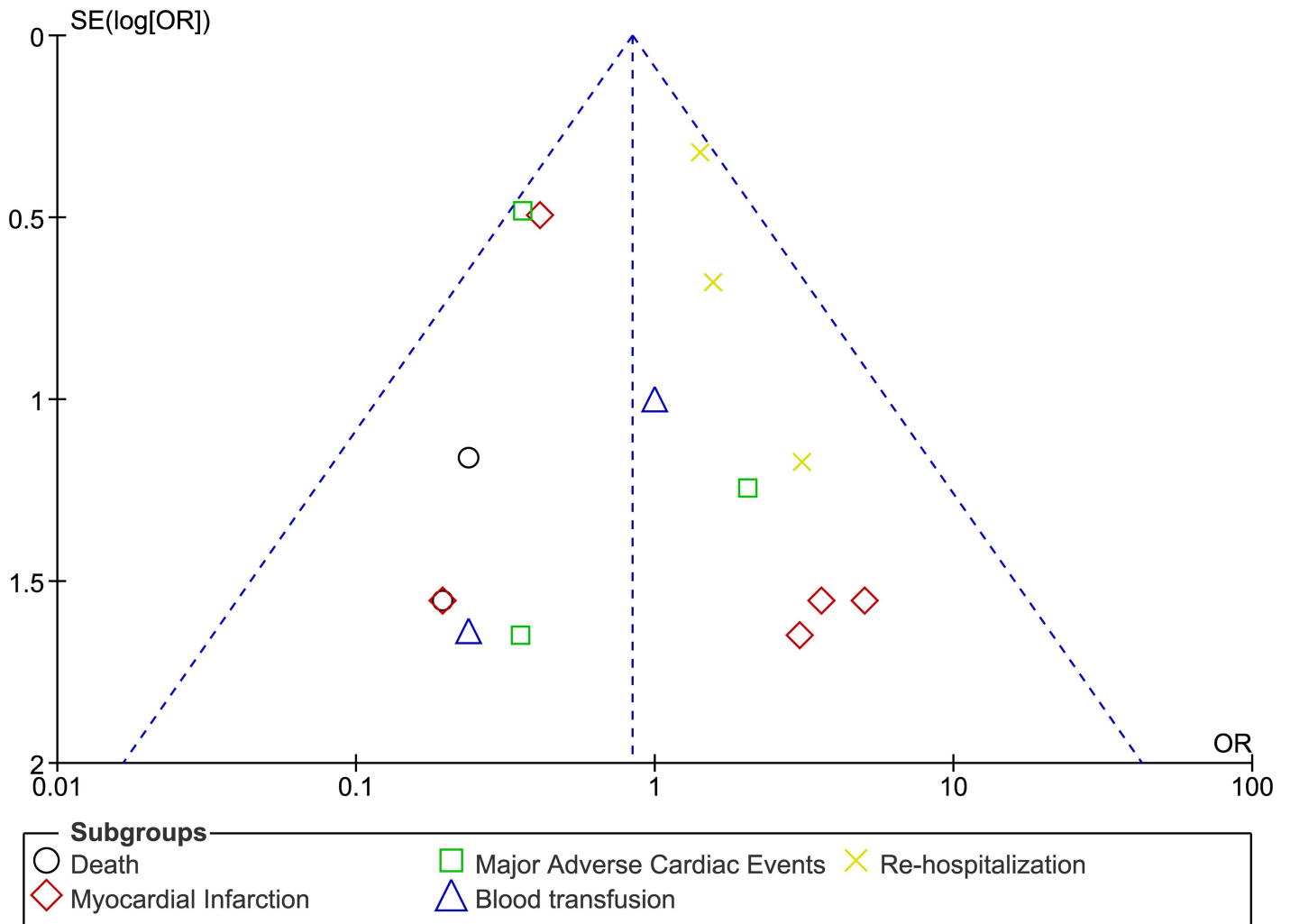


Fig 4. Funnel plot representing publication bias.

doi:10.1371/journal.pone.0169807.g004

### Supporting Information

S1 PRISMA Checklist.  
(DOC)

### Author Contributions

**Conceptualization:** PKB MZSS WQH.

**Data curation:** PKB MZSS WQH.

**Formal analysis:** PKB MZSS WQH.

**Funding acquisition:** WQH.

**Investigation:** PKB MZSS WQH.

**Methodology:** PKB MZSS WQH.

**Project administration:** PKB MZSS WQH.

**Resources:** PKB MZSS WQH.

**Software:** PKB MZSS WQH.

**Supervision:** PKB MZSS WQH.

**Validation:** PKB MZSS WQH.

**Visualization:** PKB MZSS WQH.

**Writing – original draft:** PKB.

**Writing – review & editing:** PKB.

## References

1. Rosamond W., Flegal K., Furie K., et al. Heart disease and stroke statistics—2008 update: a report from the American Heart Association Statistics Committee and Stroke Statistics Subcommittee. *Circulation*. 2008; 117, pp. e25–146. doi: [10.1161/CIRCULATIONAHA.107.187998](https://doi.org/10.1161/CIRCULATIONAHA.107.187998) PMID: [18086926](https://pubmed.ncbi.nlm.nih.gov/18086926/)
2. Prabhakaran D, Jeemon P, Roy A. Cardiovascular Diseases in India: Current Epidemiology and Future Directions. *Circulation*. 2016; 133(16):1605–20. doi: [10.1161/CIRCULATIONAHA.114.008729](https://doi.org/10.1161/CIRCULATIONAHA.114.008729) PMID: [27142605](https://pubmed.ncbi.nlm.nih.gov/27142605/)
3. Koch KT, Piek JJ, Prins MH, et al. Triage of patients for short term observation after elective coronary angioplasty. *Heart*. 2000; 83(5):557–63. doi: [10.1136/heart.83.5.557](https://doi.org/10.1136/heart.83.5.557) PMID: [10768908](https://pubmed.ncbi.nlm.nih.gov/10768908/)
4. Chung WJ, Fang HY, Tsai TH, et al. Transradial approach percutaneous coronary interventions in an out-patient clinic. 2010; *Int Heart J*. 51(6):371–6. PMID: [21173510](https://pubmed.ncbi.nlm.nih.gov/21173510/)
5. Carere RG, Webb JG, Buller CE, et al. Suture closure of femoral arterial puncture sites after coronary angioplasty followed by same-day discharge. 2000; *Am Heart J*. 139(1 Pt 1):52–8. PMID: [10618562](https://pubmed.ncbi.nlm.nih.gov/10618562/)
6. Koch KT, Piek JJ, de Winter RJ, David GK, Mulder K, Lie KI. Short-term (4 hours) observation after elective coronary angioplasty. *Am J Cardiol*. 1997; 80(12):1591–4. PMID: [9416942](https://pubmed.ncbi.nlm.nih.gov/9416942/)
7. Knopf WD, Cohen-Bernstein C, Ryan J, Heselov K, Yarbrough N, Steahr G. Outpatient PTCA with same day discharge is safe and produces high patient satisfaction level. *J Invasive Cardiol*. 1999 May; 11(5):290–5. PMID: [10745532](https://pubmed.ncbi.nlm.nih.gov/10745532/)
8. Bertrand OF, De Laroche R, Rodés-Cabau J, et al; Early Discharge After Transradial Stenting of Coronary Arteries Study Investigators. A randomized study comparing same-day home discharge and abciximab bolus only to overnight hospitalization and abciximab bolus and infusion after transradial coronary stent implantation. *Circulation*. 2006; 114(24):2636–43. doi: [10.1161/CIRCULATIONAHA.106.638627](https://doi.org/10.1161/CIRCULATIONAHA.106.638627) PMID: [17145988](https://pubmed.ncbi.nlm.nih.gov/17145988/)
9. Clavijo LC, Cortes GA, Jolly A, et al. Same-day discharge after coronary stenting and femoral artery device closure: A randomized study in stable and low-risk acute coronary syndrome patients. *Cardiovasc Revasc Med*. 2016; 17(3):155–61. doi: [10.1016/j.carrev.2016.03.003](https://doi.org/10.1016/j.carrev.2016.03.003) PMID: [27157292](https://pubmed.ncbi.nlm.nih.gov/27157292/)
10. Falcone AM, Bose R, Stoler RC, et al. The Ambulatory Closure Device Percutaneous Intervention (ABCD-PCI) study: a single-center experience. *Proc (Bayl Univ Med Cent)*. 2011; 24(3):192–4.
11. Heyde GS, Koch KT, de Winter RJ, et al. Randomized trial comparing same-day discharge with overnight hospital stay after percutaneous coronary intervention: results of the Elective PCI in Outpatient Study (EPOS). *Circulation*. 2007; 115(17):2299–306. doi: [10.1161/CIRCULATIONAHA.105.591495](https://doi.org/10.1161/CIRCULATIONAHA.105.591495) PMID: [17420341](https://pubmed.ncbi.nlm.nih.gov/17420341/)
12. Kim M, Muntner P, Sharma S, et al. Assessing patient-reported outcomes and preferences for same-day discharge after percutaneous coronary intervention: results from a pilot randomized, controlled trial. *Circ Cardiovasc Qual Outcomes*. 2013; 6(2):186–92. doi: [10.1161/CIRCOUTCOMES.111.000069](https://doi.org/10.1161/CIRCOUTCOMES.111.000069) PMID: [23481528](https://pubmed.ncbi.nlm.nih.gov/23481528/)
13. Slagboom T, Kiemeneij F, Laarman GJ, van der Wieken R. Outpatient coronary angioplasty: feasible and safe. *Catheter Cardiovasc Interv*. 2005; 64(4):421–7. doi: [10.1002/ccd.20313](https://doi.org/10.1002/ccd.20313) PMID: [15789393](https://pubmed.ncbi.nlm.nih.gov/15789393/)
14. Higgins JPT, Altman DG. Assessing risk of bias in included studies. In: Higgins JPT, Green S, eds. *Cochrane handbook for systematic reviews of interventions*. 2008; Wiley. 187–241.
15. Liberati A, Altman DG, Tetzlaff J, et al. The PRISMA statement for reporting systematic reviews and meta-analyses of studies that evaluate healthcare interventions: explanation and elaboration. *BMJ*. 2009; 339:b2700. doi: [10.1136/bmj.b2700](https://doi.org/10.1136/bmj.b2700) PMID: [19622552](https://pubmed.ncbi.nlm.nih.gov/19622552/)

16. Abdelaal E, Rao SV, Gilchrist IC, et al. Same-day discharge compared with overnight hospitalization after uncomplicated percutaneous coronary intervention: a systematic review and meta-analysis. *JACC Cardiovasc Interv.* 2013; 6(2):99–112. doi: [10.1016/j.jcin.2012.10.008](https://doi.org/10.1016/j.jcin.2012.10.008) PMID: [23352820](https://pubmed.ncbi.nlm.nih.gov/23352820/)
17. Brayton KM, Patel VG, Stave C, de Lemos JA, Kumbhani DJ. Same-day discharge after percutaneous coronary intervention: a meta-analysis. *J Am Coll Cardiol.* 2013; 62(4):275–85. doi: [10.1016/j.jacc.2013.03.051](https://doi.org/10.1016/j.jacc.2013.03.051) PMID: [23623905](https://pubmed.ncbi.nlm.nih.gov/23623905/)
18. Bertrand OF, Rodés-Cabau J, Larose E, et al. Early and late outcomes in patients excluded from same day home discharge after transradial stenting and maximal antiplatelet therapy. *Catheter Cardiovasc Interv.* 2008; 72(5):619–25. doi: [10.1002/ccd.21662](https://doi.org/10.1002/ccd.21662) PMID: [18942124](https://pubmed.ncbi.nlm.nih.gov/18942124/)
19. Perret X, Bergerot C, Rioufol G, Bonvini RF, Ovize M, Finet G. Same-day-discharge ad hoc percutaneous coronary intervention: initial single-centre experience. *Arch Cardiovasc Dis.* 2009; 102(11):743–8. doi: [10.1016/j.acvd.2009.09.002](https://doi.org/10.1016/j.acvd.2009.09.002) PMID: [19944389](https://pubmed.ncbi.nlm.nih.gov/19944389/)
20. Luciano Folchine Trindade Antonio Helio G, Pozetti Alan Vinicius G, Osti Jose Guilherme R et al. Clinical Outcomes of Patients Undergoing Elective Percutaneous Coronary Intervention with Same-Day Discharge. *Rev Bras Cardiol Invasiva.* 2012; 20(4):398–402.
21. Khater M, Zureikat H, Alqasem A, Alnaber N, Alhaddad IA. Contemporary outpatient percutaneous coronary intervention: feasible and safe. *Coron Artery Dis.* 2007; 18(7):565–9. doi: [10.1097/MCA.0b013e3282eff1da](https://doi.org/10.1097/MCA.0b013e3282eff1da) PMID: [17925611](https://pubmed.ncbi.nlm.nih.gov/17925611/)
22. Hodkinson EC, Hanratty CG, Spence MS, Walsh SJ. Same Day Discharge after PCI can also be Safe in High Risk Patients and Acute Coronary Syndrome. *Heart Lung Circ.* 2015; 24(12):1233. doi: [10.1016/j.hlc.2015.04.165](https://doi.org/10.1016/j.hlc.2015.04.165) PMID: [26048321](https://pubmed.ncbi.nlm.nih.gov/26048321/)
23. Rao SV, Kaltenbach LA, Weintraub WS, et al. Prevalence and outcomes of same-day discharge after elective percutaneous coronary intervention among older patients. *JAMA.* 2011; 306(13):1461–7. doi: [10.1001/jama.2011.1409](https://doi.org/10.1001/jama.2011.1409) PMID: [21972308](https://pubmed.ncbi.nlm.nih.gov/21972308/)
24. Gurusamy K, Junnarkar S, Farouk M, Davidson BR. Meta-analysis of randomized controlled trials on the safety and effectiveness of day-case laparoscopic cholecystectomy. *Br J Surg.* 2008; 95(2):161–8. doi: [10.1002/bjs.6105](https://doi.org/10.1002/bjs.6105) PMID: [18196561](https://pubmed.ncbi.nlm.nih.gov/18196561/)
25. Ahmad NZ, Byrnes G, Naqvi SA. A meta-analysis of ambulatory versus inpatient laparoscopic cholecystectomy. *Surg Endosc.* 2008; 22(9):1928–34. doi: [10.1007/s00464-008-9867-2](https://doi.org/10.1007/s00464-008-9867-2) PMID: [18398648](https://pubmed.ncbi.nlm.nih.gov/18398648/)