

RESEARCH ARTICLE

Open Access



# Suitable bone markers assessing bone status in patients with both coronary artery disease and diabetes

Zhila Maghbooli<sup>1</sup>, Solaleh Emamgholipour<sup>2</sup>, Arash Hossein-nezhad<sup>3,6\*</sup>, Mahmood Shirzad<sup>4</sup> and Sattar Gorgani Firuzjaee<sup>5</sup>

## Abstract

**Background:** We aimed to investigate the bone turnover markers in coronary artery disease (CAD) patients with and without type 2 diabetes (T2DM) in comparison with control subjects without CAD and T2DM.

**Methods:** This cross-sectional study was performed on 45 subjects undergoing elective heart surgery; either for coronary artery bypass grafting or for valve surgery. According to angiographic results, participants were grouped in two groups with CAD ( $n = 33$ ) and without CAD ( $n = 12$ ).

The serum levels of osteocalcin (OC), procollagen I aminoterminal propeptide (P1NP) and carboxy-terminal collagen crosslinks (CTX), as bone turnover markers, as well as serum levels of 25 (OH) vitamin D3, PTH, and common metabolic factors were analyzed in all participants.

**Results:** Serum levels of bone markers did not differ in patients with CAD compared to non-CAD subjects. Regarding metabolic factors, serum levels of FBG had invert correlation with OC in CAD patients ( $p = 0.004$ ). The data of subgroup analysis showed serum levels of OC and CTX were statistically significant lower in CAD-DM than CAD-non DM ( $p < 0.05$ ). There were not any significant differences in the P1NP levels between groups.

**Conclusions:** Our data suggest that CTX and OC would be used as suitable bone markers in CAD patients with T2DM. However, further clinical studies need to establish the role of these markers in CAD patients with diabetes.

**Keywords:** Coronary artery disease, Type 2 diabetes mellitus, Bone turnover, Bone marker, OC, P1NP, CTX

**Abbreviations:** ALP, Alkaline phosphates; BMI, Body mass index; BTMs, Bone turnover markers; BUN, Blood urea nitrogen; CAD, Coronary artery disease; CTX, C-terminal cross-linked telopeptide of type-I collagen; CV, Coefficients of variation; FBG, Fasting blood glucose; HDL, High-density lipoprotein; LDL, Low-density lipoprotein; P1NP, Procollagen I aminoterminal propeptide; RIA, Radioimmunoassay; T2DM, Type 2 diabetes mellitus; TC, Total cholesterol; TG, Triglycerides

## Background

Type 2 diabetes patients are high susceptible to cardiovascular disease, which is attributable to hyperglycemia, oxidative stress, and inflammation [1–3]. Both disorders are interrelated to other common disorders such as osteoporosis. Cross talk among these conditions proposes shared biological mechanisms, or common risk factors too [4, 5].

Circulating bone turnover markers (BTMs) mirror the current bone remodeling phase. There is also evidence that skeleton as an endocrine system has a pivotal role in regulating energy metabolism via producing BTMs. Current researches have suggested osteocalcin (OC) as a non-collagenous protein regulates glucose, lipid and energy metabolisms as well as bone metabolism [6]. Most researches have focused on the serum levels of OC in obesity, metabolic disorder and T2DM conditions [7]. Moreover, the close relation of circulating OC and atherosclerotic plaque calcification was previously demonstrated. It has been shown that increased

\* Correspondence: arash\_hsi@yahoo.com

<sup>3</sup>Osteoporosis Research Center, Endocrinology and Metabolism Clinical Sciences Institute, Tehran University of Medical Sciences, Tehran, Iran

<sup>6</sup>EMRI, 5th floor, Shariati Hospital, North Karegar Avenue, P.O Box: 1411413137, Tehran, Iran

Full list of author information is available at the end of the article

endothelial progenitor cells carrying OC and monocytes expressing OC are associated with plaque vulnerability in patients with early atherosclerosis [8, 9].

Procollagen type I N-terminal propeptide (P1NP) is also another protein which is secreted by osteoblasts during the collagen type I synthesis. This protein has been taken into account in the osteoporosis management [10]. The serum markers of collagen I and III as the N-terminal propeptides of type I and III procollagen (PINP and PIIINP) have been suggested to serve useful markers of cardiac collagen turnover [11]. An extracellular matrix predominantly comprises of type I and III collagen and surrounds cardiac myocytes. Excess myocardial collagen deposition has been linked to cardiac hypertrophy, myocardial hibernation, myocardial infarction (MI) and congestive heart failure [11]. Moreover, it has also reported that lower levels of P1NP are associated with hyperinsulinemia and hyperglycemia in healthy individuals [12].

C-terminal cross-linked telopeptide of type-I collagen (CTX) as a bone resorptive marker is produced by osteoclasts during bone resorption. There are inconsistent results about the association of CTX and diabetes. Recently a meta-analysis diabetes patients reported the serum levels of OC and CTX were lower in diabetes patients compare to controls [13]. Moreover, it has been demonstrated CTX is a predictive factor of an increased carotid intima-media thickness in the elderly population [14].

However, little is known regarding the association of BTMs with T2DM and CAD. Hence, we aimed to investigate the BTMs in CAD patients with and without T2DM in comparison with control subjects without CAD and T2DM.

## Methods

### Patient selection

The current cross-sectional study included 45 individuals who underwent an elective heart surgery; either for coronary artery bypass grafting or for valve surgery, between September 2011 and March 2012 at the Heart hospital affiliated to Tehran University of Medical Sciences. Exclusion criteria were endocrine disorders, inflammatory diseases, and history of previous heart attack, malignancies, and known chronic diseases with the exception of classic risk factors of CAD. The ethics committee of Endocrinology and Metabolism Research Institute approved the study protocol. At the time of recruitment, all participants provided written informed consent to participate in all stages of the study. Clinical information was obtained using a standardized health questionnaire, and a general practitioner performed the physical examination. Angiography was performed on patients who presented with cardiac chest pain and a positive exercise test. In all cases, where luminal stenosis was more than 50 %, the participants were considered CAD patients.

The diagnosis of type 2 diabetes mellitus (DM) was carried out and/or confirmed following the American Diabetes Association criteria, which includes a fasting blood glucose  $\geq 126$  mg/dL on two separate occasions, random (non-fasting) blood glucose  $\geq 200$  mg/dL on two separate occasions or a blood glucose  $>200$  mg/dL at 2 h during a standard oral glucose tolerance test [15].

### Biochemical measurements

To control the effect of circadian rhythm and food intake, all samples were collected from the patients in the morning at the same time and also patients fasted for 12 h before taking peripheral venous blood. Serum levels of glucose (FBG), total cholesterol (TC), high-density lipoprotein (HDL), low-density lipoprotein (LDL), triglycerides (TG), blood urea nitrogen (BUN), creatinine, magnesium (Mg), calcium (Ca), and liver tests (ALT, AST) were measured by enzymatic colorimetric assay [Pars-Asmun kits, Iran] using an auto analyzer [Hitachi 902, Japan]. Potassium (K) and sodium (Na) were measured by using a photoelectric flame photometer [ISE].

Serum 25(OH)D was measured by radioimmunoassay (RIA) (IDS); intra- and inter-assay coefficients of variation (CV) were 5.2 and 7.5 %, respectively. Intact parathyroid hormone (PTH) was measured using electrochemiluminescence assay (Roche). P1NP was measured by quantitative sandwich enzyme immunoassay technique (intra- and inter-assay CV was  $<8$  and  $<10$  %) (Causabio). Osteocalcin (N-MID Osteocalcin, intra- and inter-assay CV was 0.9 and 1.3 %, respectively) and CTX (intra- and inter-assay CV was  $<1.6$  and  $<2.2$  %, respectively) were measured using electrochemiluminescence assay (Roche). The electrochemiluminescence assay for OC recognizes a large N-terminal midfragment in addition to the intact molecule.

### Statistical analysis

Data were analyzed using SPSS software, version 16. As certain data were not normally distributed, including the OC, HDL, TG, PTH and P1NP levels, log transformation were applied to correct their normality distribution. The student *t*-test and one-way ANOVA were used to compare the differences in serum levels of bone markers in CAD patients with and without DM and controls. The non-parametric test was performed for data were not normality distributed including Cr, Na and Mg levels. A Pearson correlation was used to determine correlation between bone marker levels and metabolic factors. A univariate analysis from General Linear Model (GLM) was used to control confounding variable effects including age and sex. Numerical variables are reported as the mean  $\pm$  standard error or median (IQR) and categorical variables are presented as number (percentages). In all tests, the level of significance was set at two-tailed *p*-values less than 0.05 ( $p < 0.05$ ).

## Results

### Characteristics of study populations

This study included 45 patients undergoing elective heart surgery; either for coronary artery bypass grafting or for valve surgery. The mean age was  $60.82 \pm 1.46$  years (55 % men). All subjects were considered based on angiography result; CAD patients ( $n = 33$ ), non-CAD ( $n = 12$ ). Twenty four of CAD patients had angiographically confirmed 3-vessel stenosis ( $>50\%$ ). The clinical and biochemical characteristics of study participants are presented in Table 1.

**Table 1** Demographic and laboratory characteristics of the study population

Characteristics	CAD N=33	Non-CAD N=12	p-value
Age- years	$63.32 \pm 1.44$	$55.29 \pm 2.06$	0.01
EF-%	$48.10 \pm 2.06$	$50.68 \pm 13.46$	0.19
Sex (Men)- N(%)	22 (66)	3 (25)	0.002
BMI- Kg/m <sup>2</sup>	$27.79 \pm 1.01$	$27.95 \pm 2.91$	0.95
FBG- mg/dl	$98.68 \pm 4.79$	$96.76 \pm 5.22$	0.81
Log.TG	$4.94 \pm 0.08$	$4.86 \pm 0.13$	0.63
TC- mg/dl	$160.18 \pm 8.27$	$179.50 \pm 10.43$	0.09
Log.HDL-mg/dl	$3.58 \pm 0.05$	$3.66 \pm 0.08$	0.41
LDL- mg/dl	$99.93 \pm 7.48$	$108.46 \pm 8.24$	0.82
AST- U/L	$20.12 \pm 1.07$	$24.61 \pm 2.86$	0.16
ALT- U/L	$21.63 \pm 2.20$	$21.83 \pm 2.52$	0.95
25(OH)D - nmol/l	$59.69 \pm 2.41$	$57.2 \pm 4.14$	0.61
Log.PTH-pg/ml	$3.11 \pm 0.08$	$3.60 \pm 0.24$	0.08
K- mmol/l	$4.50 \pm 0.08$	$5.34 \pm 0.97$	0.19
Na- mmol/l	144 (4.50)	142 (5.50)	0.01
Ca- mg/dl	$10.01 \pm 0.59$	$7.74 \pm 0.84$	0.04
Mg- mg/dl	2 (0.20)	2.1 (0.55)	0.21
BUN- mg/dl	$45.62 \pm 4.44$	$41.68 \pm 9.10$	0.64
Cr - mg/dl	0.91 (0.35)	0.7 (0.39)	0.38
ALP- Unit/l	$78.36 \pm 7.54$	$66.20 \pm 11.84$	0.39
Log.OC- ng/ml	$2.82 \pm 0.08$	$2.84 \pm 0.13$	0.89
Log.P1NP- pg/ml	$3.89 \pm 0.19$	$3.93 \pm 0.35$	0.93
CTX-ng/ml	$0.28 \pm 0.02$	$0.40 \pm 0.05$	0.039
Statin user- N(%)	17 (51)	1 (8)	0.006
Type 2 diabetes- N(%)	15 (45)	-	-
Hypertension- N(%)	16 (48)	3 (25)	0.09

Continuous and categorical variables were described as median  $\pm$  SE and N(%), respectively. Non-normal or skewed variables were presented as median and interquartile range (IQR)- Na, Cr, Mg. Student t-test and Mann-Whitney U test were applied for normal and non-normal distributed variables, respectively CAD Coronary artery disease, N number, BMI body mass index, FBG fasting blood glucose, TG triglycerides, TC total cholesterol, HDL high-density lipoprotein cholesterol, LDL low-density lipoprotein cholesterol, ALT alanine amino transferase, AST aspartate amino transferase, PTH parathyroid hormone, K Potassium, Ca Calcium, Mg Magnesium, Na Sodium, OC Osteocalcin, CTX carboxy-terminal collagen crosslinks, P1NP procollagen I aminoterminal propeptide, Log Natural logarithm

There were significant differences in mean ages and sex between CAD and non-CAD subjects ( $p < 0.05$ ). There were not significant differences in the levels of total cholesterol, triglyceride, HDL, and LDL between two groups. This might be caused by current statin therapy; around 50 % of CAD patients used statins. Among CAD patients, 15 patients had history of diabetes. Non-CAD patients (control group) had not history of diabetes. There were no patients in either group taking anti-osteoporotic drugs, vitamin K or vitamin D supplementations.

### Bone turnover markers and CAD

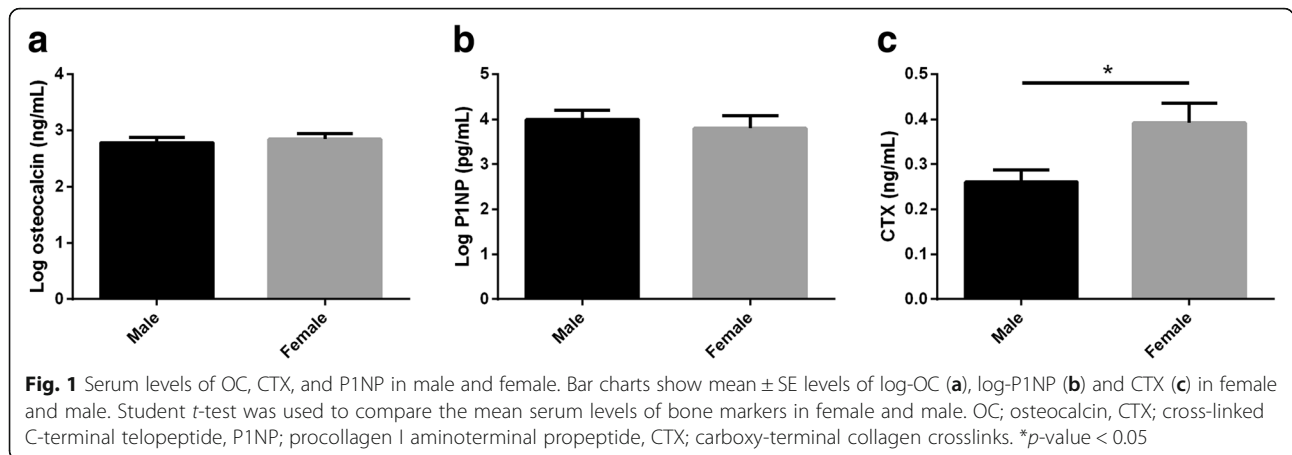
Serum bone markers were evaluated in both groups; with and without CAD. No significant differences were observed in the OC and P1NP levels between CAD and non-CAD groups ( $p > 0.05$ ). CTX levels were significantly lower in CAD patients compared to those in non-CAD patients ( $p = 0.039$ ). To investigate the influence of sex on BTMs, all subjects were stratified based on sex. The serum levels of OC and P1NP did not significantly differ between men and women (Log OC:  $2.78 \pm 0.09$  vs.  $2.84 \pm 0.10$ , respectively,  $p = 0.68$  and Log P1NP:  $3.99 \pm 0.20$  vs.  $3.79 \pm 0.28$  respectively,  $p = 0.69$ ). But, the CTX levels were lower in men than women ( $0.26 \pm 0.02$  vs.  $0.39 \pm 0.04$ , respectively,  $p = 0.01$ ) (Fig. 1). In univariate model, after adjusting for age and sex, there was no significant association between CTX and CAD ( $p = 0.56$ ).

### Serum bone turnover markers and metabolic factors

In all subjects, there were no significant correlation between bone markers and metabolic factors such as FBG, TC, TG, HDL and LDL. There was significant inverse correlation between OC and FBG ( $r = -0.5$ ,  $p = 0.004$ ) in the group of patients with CAD. There was also significant positive correlation between CTX and TG ( $r = 0.6$ ,  $p = 0.02$ ) in non-CAD group. In both groups examined, no correlations were found between levels of bone markers and other metabolic factors ( $p > 0.05$ ) (Table 2). To investigate serum levels of bone markers with respect to FBG, the CAD patients were stratified according to history of T2DM; with CAD-DM ( $n = 15$ ) and CAD-non DM ( $n = 18$ ).

The OC levels were significantly lower in patients with both CAD and DM compared to CAD-non DM patients (Log OC:  $2.52 \pm 0.11$  vs.  $3.07 \pm 0.07$ , respectively,  $p = 0.001$ ). The CTX levels were also significantly lower in CAD-DM patients than those with CAD-non-DM ( $0.22 \pm 0.03$  vs.  $0.35 \pm 0.03$ , respectively,  $p = 0.019$ ). However, in patients with both CAD and DM, we found no significant differences in mean value of serum P1NP levels compared with CAD-non DM (Log P1NP:  $4.30 \pm 0.28$  vs.  $3.58 \pm 0.24$ , respectively,  $p = 0.19$ ) (Fig. 2).

The mean age of CAD-DM group was similar CAD-nonDM group ( $63.82 \pm 1.81$ , vs.  $62.50 \pm 2.12$ , respectively,



*p* = 0.90). No significant differences in serum 25 (OH)D levels were found between two groups ( $58.87 \pm 3.20$  vs.  $61.62 \pm 3.37$ , respectively, *p* = 0.84). Also, the serum levels of PTH were not significantly differences in CAD patients with and without DM (Log PTH:  $3.18 \pm 0.13$  vs.  $3.05 \pm 0.10$ , respectively, *p* = 0.42). Although a number of statin users was higher in CAD-DM than CAD-nonDM but it was not statistically significant (5 out of 15, vs. 12 out of 18, respectively, *p* = 0.056).

To investigate bone marker levels with respect to lipid profiles, we stratified CAD patients based on using statins; statin-users and non-users. There were not any significant differences in the serum levels of bone markers between two groups (*p* > 0.05) (Fig. 3).

In univariate model, these statistical significances in the levels of OC and CTX were consistently observed even further adjusting for age and sex between CAD-DM and CAD-nonDM patients (*p* = 0.011, *p* = 0.013, respectively).

### Discussion

In this study we measured serum levels of OC and P1NP as bone formation markers and CTX as bone resorption marker in CAD patients and controls. Our findings showed similar levels of BTMs in CAD and non-CAD groups. There are conflicting results regarding BTMs and cardiovascular diseases. In a study by Pennisi et al., it was revealed that patients with serious atherosclerotic involvement of the carotid and/or femoral artery had decreased OC serum levels in comparison with controls, while urinary concentration of CTX and serum levels of osteoprotegerin were not significantly different between these groups [16]. Based on Pongvarin et al's study, there was no difference in case of OC, and CTX values between CAD patients and healthy individuals [17, 18] which was compatible with our findings.

Circulating OC levels are stimulated by using anti-resorptive agents or vitamin D [19]. In our study population

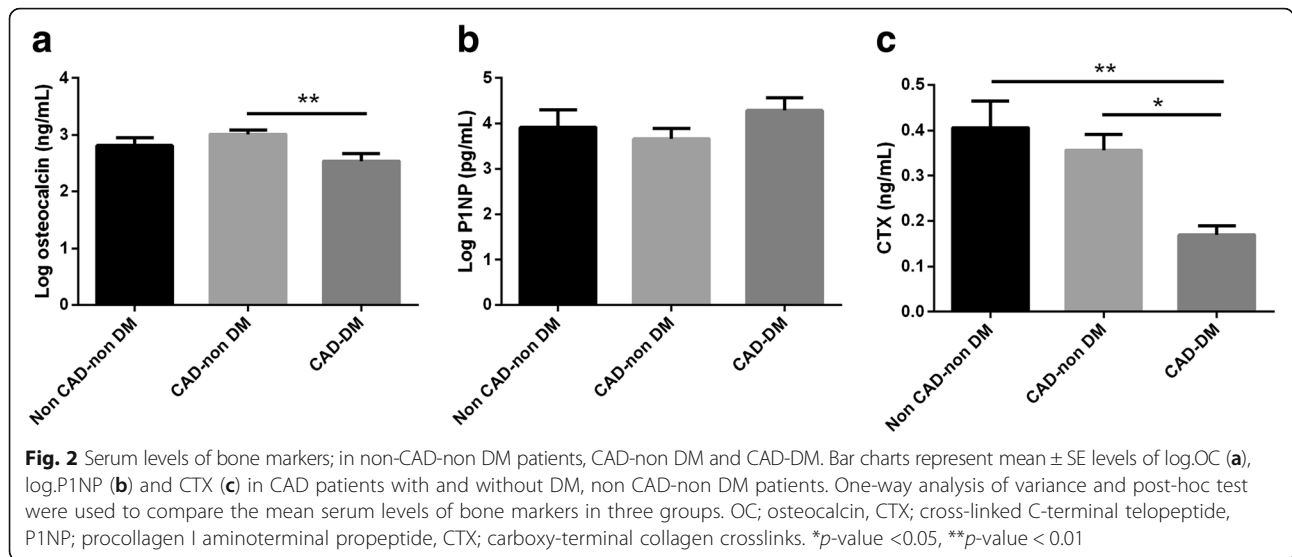
**Table 2** Correlation between bone markers and metabolic factors

Metabolic factors	Total study population						Non-CAD group						CAD group					
	Log.OC (ng/ml)		Log.P1NP (pg/ml)		CTX (ng/ml)		Log.OC (ng/ml)		Log.P1NP (pg/ml)		CTX (ng/ml)		Log.OC (ng/ml)		Log.P1NP (pg/ml)		CTX (ng/ml)	
	r	P	r	p	r	p	R	p	R	p	R	p	r	p	r	p	r	p
FBG-mg/dl	-0.24	0.11	0.21	0.16	-0.02	0.88	0.53	0.06	-0.29	0.33	0.46	0.11	-0.50**	0.004	0.33	0.06	-0.15	0.39
TC-mg/dl	-0.15	0.39	-0.01	0.94	0.22	0.17	0.06	0.86	-0.19	0.58	0.16	0.65	-0.18	0.33	-0.02	0.88	0.22	0.22
Log.TG-mg/dl	-0.12	0.42	0.09	0.55	0.10	0.49	0.27	0.37	0.32	0.28	0.61*	0.02	-0.29	0.10	0.02	0.89	-0.12	0.50
Log.HDL-mg/dl	-0.18	0.25	0.19	0.22	-0.07	0.62	-0.49	0.08	0.18	0.55	-0.31	0.30	-0.15	0.43	0.28	0.14	-0.07	0.69
LDL-mg/dl	0.07	0.63	-0.08	0.58	0.29*	0.049	0.42	0.15	-0.27	0.37	0.41	0.16	-0.05	0.79	-0.01	0.92	0.26	0.16
BUN-mg/dl	-0.02	0.90	-0.13	0.41	-0.05	0.74	-0.18	0.71	-0.45	0.13	-0.11	0.72	0.006	0.97	0.08	0.66	-0.02	0.92
Cr-mg/dl	0.06	0.68	-0.14	0.37	-0.04	0.78	-0.12	0.68	-0.49	0.09	-0.17	0.57	0.18	0.33	0.05	0.79	0.05	0.79
BMI-kg/m <sup>2</sup>	0.09	0.75	-0.08	0.71	0.17	0.42	0.44	0.27	0.04	0.92	0.38	0.35	-0.43	0.11	-0.19	0.48	-0.17	0.53

*r* Pearson Correlation, *p* *p*-value, CAD Coronary artery disease, BMI body mass index, FBG fasting blood glucose, TG triglycerides, TC total cholesterol, HDL high-density lipoprotein cholesterol, LDL BMD body mass index, Log Natural logarithm

\*Correlation is significant at the 0.05 level (2-tailed)

\*\*Correlation is significant at the 0.01 level (2-tailed)



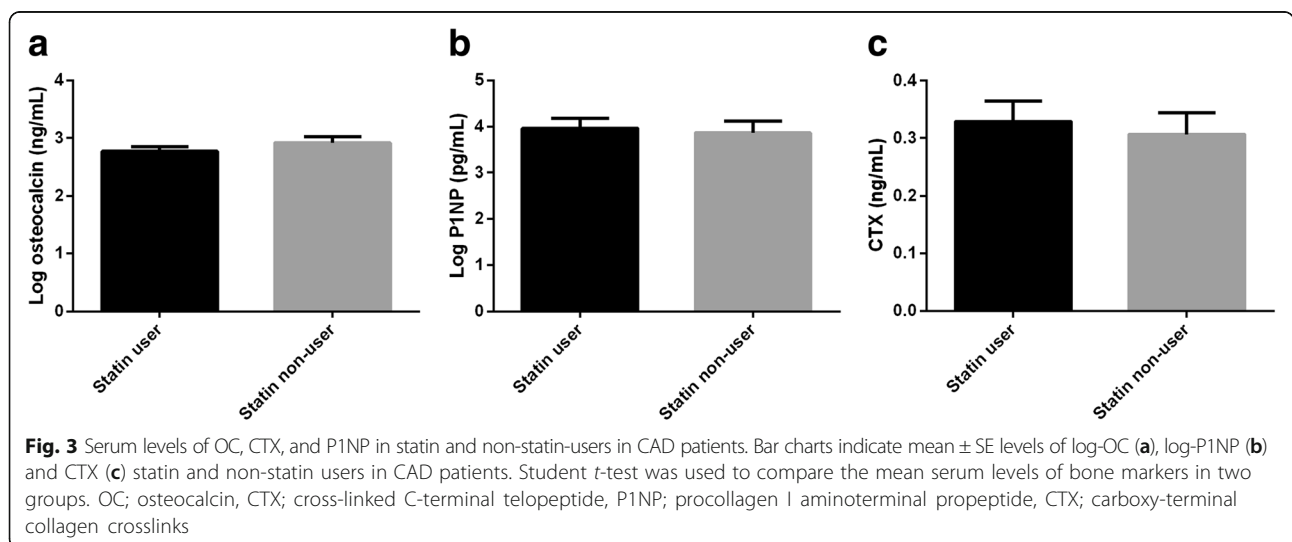
no patients in either group were taking anti-osteoporotic drugs, vitamin K intake or vitamin D supplementations.

Based on current studies, it has suggested that circulating levels of BTMs are changed in relation to glucose or fat metabolism [20, 21]. We found significant inverse correlation between OC and FBG in CAD patients. Moreover, it was suggested that circulating OC was inversely associated with metabolic abnormality indices including hyperglycemia, insulin resistance and carotid atherosclerosis in human studies [22–24]. Based on experimental studies hyperglycemia reduces bone turnover, in part, through impairment osteoblast function and suppression of circulating OC levels [25, 26].

Our data showed no correlation between BTMs and lipid profile in CAD patients. It might be caused by the higher percentage of current statin users in the CAD group. In subgroup analyzing by using stains, serum

levels of bone markers did not significant differ between CAD statin users and non-users. A systematic review on statins and bone health in postmenopausal women showed no significant association between BTMs and using statins [27]. However, some studies have revealed using statins associate negatively with BTMs [28]. Zhi-guo and colleges' in the study on male patients with osteopenia revealed CTX significantly reduced in atorvastatin treatment group [28].

We stratified CAD patients to DM and non-DM subgroups. As a major finding, our data showed that there was a significant difference in serum levels of CTX and OC between CAD patients with and without DM. Our findings show that both bone markers; OC and CTX decreased in patients with CAD-DM compared to CAD-non DM patients. It is suggested that changes in bone formation and resorption are not in a state of balance in CAD patients with diabetes [13].





To note, there are few studies that investigate BTMs in patients with both CAD and DM. However, there is growing evidence with conflicting results regarding evaluation of BTMs in CAD or DM and it was implicated that circulating levels of BTM are changed in these conditions.

Bao and colleagues' assessed serum levels of OC in metabolic syndrome (MS) patients [29]. MS as an aggregate of cardiometabolic risk factors is associated with increased risk of developing cardiovascular disease and diabetes [30]. They reported low serum levels of OC as a predictor factor for developing MS in Chinese men. Also, serum OC was independently correlated with coronary atherosclerosis index. In another study by Ogawa-Furuya and colleagues', the serum levels of OC in patients with T2DM and abdominal aortic calcification were measured [31]. They described that the serum uncarboxylated OC levels were lower in CAD patients compared to control group even after adjusting DM. But the levels of carboxylated OC did not differ between CAD patients and controls. In present study, we assessed N-MID osteocalcin by using electrochemiluminescence assay. In this method, both circulated intact and the large N-terminal/midregion fragment in serum are measured.

In term of PINP, we didn't find any significant differences in the serum levels of PINP in CAD patients compared to controls and also in CAD patients with and without DM. Some studies have indicated that circulating collagen metabolites are reliable surrogate in the context of atherosclerotic events, while other investigations have showed contradictory results. For example, Lin et al., revealed the PIIINP circulating levels, but no P1NP were significantly associated with the CAD severity in patients without myocardial infarction [11]. Alla et al. reported that P1NP levels were lower in patients with hypertension and T2DM as compared to controls [32]. However, we didn't evaluate bone markers in diabetic patients with and without CAD.

Our study has some limitations. Firstly, worked on small sample size could effect on results. Secondly, the cross-sectional design of our study limits to determine the mechanism responsible for decrease in OC in CAD-DM patients. Longitudinal studies are necessary to define the clinical relevance of bone markers in the pathogenesis of cardiovascular disease and monitoring of disease stage. Thirdly, we didn't assess bone mineral density in study population. Evaluation of bone status should be performed to provide more evidence in this regard.

## Conclusion

In conclusion, our data showed the serum levels of OC and CTX were lower in CAD patients with T2DM. It is suggesting that OC and CTX might be as suitable bone markers to evaluate bone status in patients with both CAD and T2DM. It is likely the hyperglycemic background

in T2DM patients may lie in the plausible mechanism for decreasing OC and CTX in CAD patients.

## Acknowledgements

We thank Akram Mokhtari, Neda Salehi for their help on subject recruitment.

## Funding

This study has been funded by Endocrinology and Metabolism Research Institute, Tehran University of Medical Sciences.

## Availability of data and materials

All data supporting our findings are within the paper.

## Authors' contributions

All authors designed the study. MS, ZM and SE gathered the clinical data. ZM, SE, SG performed experiments. AH, and ZM analyzed the data. AH, ZM, SE, MA, and SG wrote the main paper. All authors discussed the results and commented on the manuscript at all stages. All authors read and approved the final manuscript.

## Competing interests

The authors declare that they have no competing interests.

## Consent for publication

Not applicable.

## Ethics approval and consent to participate

This study was proposed and approved by the Ethics-in-Research Commission of Endocrinology and Metabolism Research Institute, Tehran University of Medical Sciences (Ref Number: 00188).

After complete explanation of the study aim, written informed consent from each participant was gathered.

## Author details

<sup>1</sup>Endocrinology and Metabolism Research Center, Endocrinology and Metabolism Clinical Sciences Institute, Tehran University of Medical Sciences, Tehran, Iran. <sup>2</sup>Clinical Biochemistry Department, Faculty of Medicine, Tehran University of Medical Sciences, Tehran, Iran. <sup>3</sup>Osteoporosis Research Center, Endocrinology and Metabolism Clinical Sciences Institute, Tehran University of Medical Sciences, Tehran, Iran. <sup>4</sup>Heart Center, Tehran University of Medical Sciences, Tehran, Iran. <sup>5</sup>Department of Medical Laboratory Sciences, School of Allied Health Medicine, AJA University of Medical Sciences, Tehran, Iran. <sup>6</sup>EMRI, 5th floor, Shariati Hospital, North Karegar Avenue, P.O Box: 1411413137, Tehran, Iran.

Received: 12 May 2016 Accepted: 28 August 2016

Published online: 06 September 2016

## References

- Trachanas K, Sideris S, Aggeli C, et al. Diabetic cardiomyopathy: from pathophysiology to treatment. *Hell J Cardiol*. 2014;55(5):411–21.
- Avogaro A, de Kreutzenberg SV, Fadini G. Endothelial dysfunction: causes and consequences in patients with diabetes mellitus. *Diabetes Res Clin Pract*. 2008;82 Suppl 2:S94–S101. doi:10.1016/j.diabres.2008.09.021.
- Fadini GP, Albiero M, Menegazzo L, et al. Procalcific phenotypic drift of circulating progenitor cells in type 2 diabetes with coronary artery disease. *Exp Diabetes Res*. 2012;2012:921685.
- Lampropoulos CE, Papaioannou I, D'Cruz DP. Osteoporosis—a risk factor for cardiovascular disease? *Nat Rev Rheumatol*. 2012;8(10):587–98. doi:10.1038/nrrheum.2012.120.
- Bhupathiraju SN, Lichtenstein AH, Dawson-Hughes B, et al. Adherence to the 2006 American Heart Association Diet and Lifestyle Recommendations for cardiovascular disease risk reduction is associated with bone health in older Puerto Ricans. *Am J Clin Nutr*. 2013;98(5):1309–16. doi:10.3945/ajcn.112.056267.
- Du J, Pan X, Lu Z, et al. Serum osteocalcin levels are inversely associated with the presence of nonalcoholic fatty liver disease in patients with coronary artery disease. *Int J Clin Exp Med*. 2015;8(11):21435–41.
- Lerchbaum E, Schwetz V, Nauck M, et al. Lower bone turnover markers in metabolic syndrome and diabetes: the population-based Study of Health in Pomerania. *Nutr Metab Cardiovasc Dis*. 2015;25(5):458–63. doi:10.1016/j.numecd.2015.02.002.

8. Zhang H, Wang L-j, Si D-I, et al. Correlation between osteocalcin-positive endothelial progenitor cells and spotty calcification in patients with coronary artery disease. *Clin Exp Pharmacol Physiol*. 2015;42(7):734–9. doi:10.1111/1440-1681.12366.
9. Collin J, Gössl M, Matsuo Y, et al. Osteogenic monocytes within the coronary circulation and their association with plaque vulnerability in patients with early atherosclerosis. *Int J Cardiol*. 2015;181:57–64.
10. Iglesias P, Arrieta F, Pinera M, et al. Serum concentrations of osteocalcin, procollagen type 1 N-terminal propeptide and beta-CrossLaps in obese subjects with varying degrees of glucose tolerance. *Clin Endocrinol*. 2011;75(2):184–8. doi:10.1111/j.1365-2265.2011.04035.x.
11. Lin YH, Ho YL, Wang TD, et al. The relation of amino-terminal propeptide of type III procollagen and severity of coronary artery disease in patients without myocardial infarction or hibernation. *Clin Biochem*. 2006;39(9):861–6. doi:10.1016/j.clinbiochem.2006.05.017.
12. Pirila S, Taskinen M, Turanlahti M, et al. Bone health and risk factors of cardiovascular disease—a cross-sectional study in healthy young adults. *PLoS One*. 2014;9(10):e108040. doi:10.1371/journal.pone.0108040.
13. Starup-Linde J, Vestergaard P. Biochemical bone turnover markers in diabetes mellitus - A systematic review. *Bone*. 2016;82:69–78. doi:10.1016/j.bone.2015.02.019.
14. Leli C, Pasqualini L, Vaudo G, et al. Carotid intima-media thickness and bone turnover: the role of C-terminal telopeptide of type I collagen. *Intern Emerg Med*. 2010;5(2):127–34. doi:10.1007/s11739-010-0356-y.
15. American Diabetes A. Standards of medical care in diabetes—2010. *Diabetes Care*. 2010;33 Suppl 1:S11–61. doi:10.2337/dc10-S011.
16. Pennisi P, Signorelli S, Riccobene S, et al. Low bone density and abnormal bone turnover in patients with atherosclerosis of peripheral vessels. *Osteoporos Int*. 2004;15(5):389–95.
17. Pongvarin N, Leowattana W, Mahanonda N, et al. Biochemical markers of bone turnover in angiographically-demonstrated coronary artery disease patients and healthy Thais. *J Med Assoc Thai*. 2000;83 Suppl 2:S13–8.
18. Pongvarin N, Leowattana W, Mahanonda N, et al. Comparison of Parathyroid Hormone in Angiographically-demonstrated Coronary Artery Disease Patients and Healthy Thais. *J Med Assoc Thai*. 2001;83:S106–10.
19. Patti A, Gennari L, Merlotti D, et al. Endocrine actions of Osteocalcin. *Int J Endocrinol*. 2013;2013:10. doi:10.1155/2013/846480.
20. Ferron M, McKee MD, Levine RL, et al. Intermittent injections of osteocalcin improve glucose metabolism and prevent type 2 diabetes in mice. *Bone*. 2012;50(2):568–75.
21. Ferron M, Hinoi E, Karsenty G, et al. Osteocalcin differentially regulates  $\beta$  cell and adipocyte gene expression and affects the development of metabolic diseases in wild-type mice. *Proc Natl Acad Sci*. 2008;105(13):5266–70.
22. Garanty-Bogacka B, Syrenicz M, Rac M, et al. Association between serum osteocalcin, adiposity and metabolic risk in obese children and adolescents. *Endokrynol Pol*. 2013;64(5):346–52.
23. Pittas AG, Harris SS, Eliades M, et al. Association between serum osteocalcin and markers of metabolic phenotype. *J Clin Endocrinol Metab*. 2009;94(3):827–32.
24. Ma H, Lin H, Hu Y, et al. Serum levels of osteocalcin in relation to glucose metabolism and carotid atherosclerosis in Chinese middle-aged and elderly male adults: the Shanghai Changfeng Study. *Eur J Intern Med*. 2014;25(3):259–64.
25. Botolin S, McCabe LR. Chronic hyperglycemia modulates osteoblast gene expression through osmotic and non-osmotic pathways. *J Cell Biochem*. 2006;99(2):411–24. doi:10.1002/jcb.20842.
26. Levinger I, Seeman E, Jerums G, et al. Glucose-loading reduces bone remodeling in women and osteoblast function in vitro. *Physiol Rep*. 2016;4(3):e12700. doi:10.14814/phy2.12700.
27. Yue J, Zhang X, Dong B, et al. Statins and bone health in postmenopausal women: a systematic review of randomized controlled trials. *Menopause (New York, NY)*. 2010;17(5):1071–9. doi:10.1097/gme.0b013e3181d3e036.
28. Chen ZG, Cai HJ, Jin X, et al. Effects of atorvastatin on bone mineral density (BMD) and bone metabolism in elderly males with osteopenia and mild dyslipidemia: a 1-year randomized trial. *Arch Gerontol Geriatr*. 2014;59(3):515–21. doi:10.1016/j.archger.2014.07.006.
29. Bao Y, Zhou M, Lu Z, et al. Serum levels of osteocalcin are inversely associated with the metabolic syndrome and the severity of coronary artery disease in Chinese men. *Clin Endocrinol*. 2011;75(2):196–201. doi:10.1111/j.1365-2265.2011.04065.x.
30. Grundy SM, Cleeman JI, Daniels SR, et al. Diagnosis and management of the metabolic syndrome: an American Heart Association/National Heart, Lung, and Blood Institute scientific statement. *Curr Opin Cardiol*. 2006;21(1):1–6.
31. Ogawa-Furuya N, Yamaguchi T, Yamamoto M, Kanazawa I, Sugimoto T. Serum osteocalcin levels are inversely associated with abdominal aortic calcification in men with type 2 diabetes mellitus. *Osteoporosis International*. 2013;24(8):2223–30.
32. Alla F, Kearney-Schwartz A, Radauceanu A, et al. Early changes in serum markers of cardiac extra-cellularmatrix turnover in patients with uncomplicated hypertension and type II diabetes. *Eur J Heart Fail*. 2006;8(2):147–53.

Submit your next manuscript to BioMed Central and we will help you at every step:

- We accept pre-submission inquiries
- Our selector tool helps you to find the most relevant journal
- We provide round the clock customer support
- Convenient online submission
- Thorough peer review
- Inclusion in PubMed and all major indexing services
- Maximum visibility for your research

Submit your manuscript at  
www.biomedcentral.com/submit

